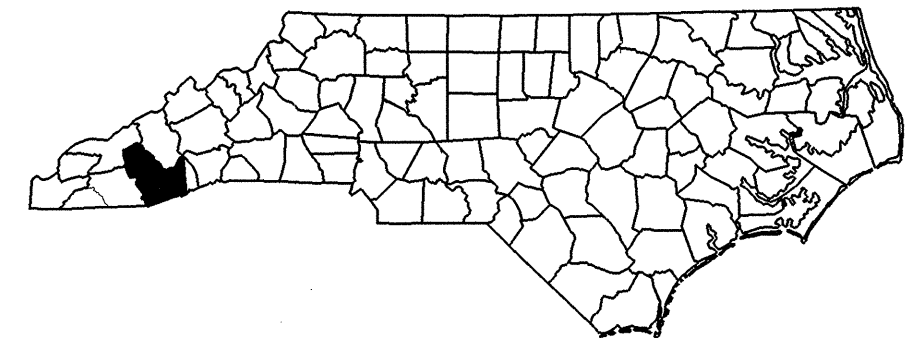
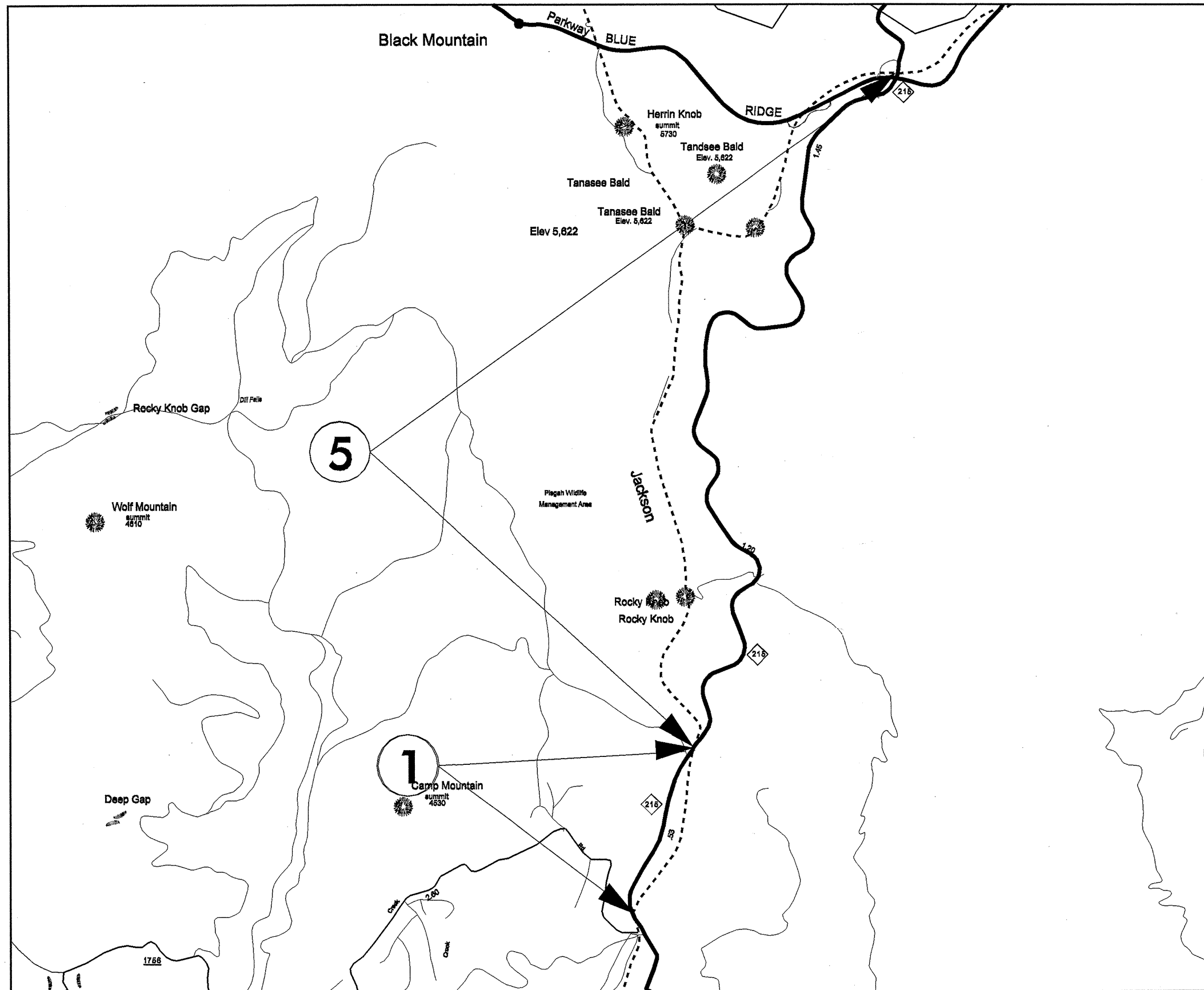


060197

# 2009 CONTRACT RESURFACING TRANSYLVAINA COUNTY

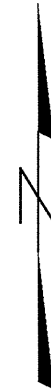
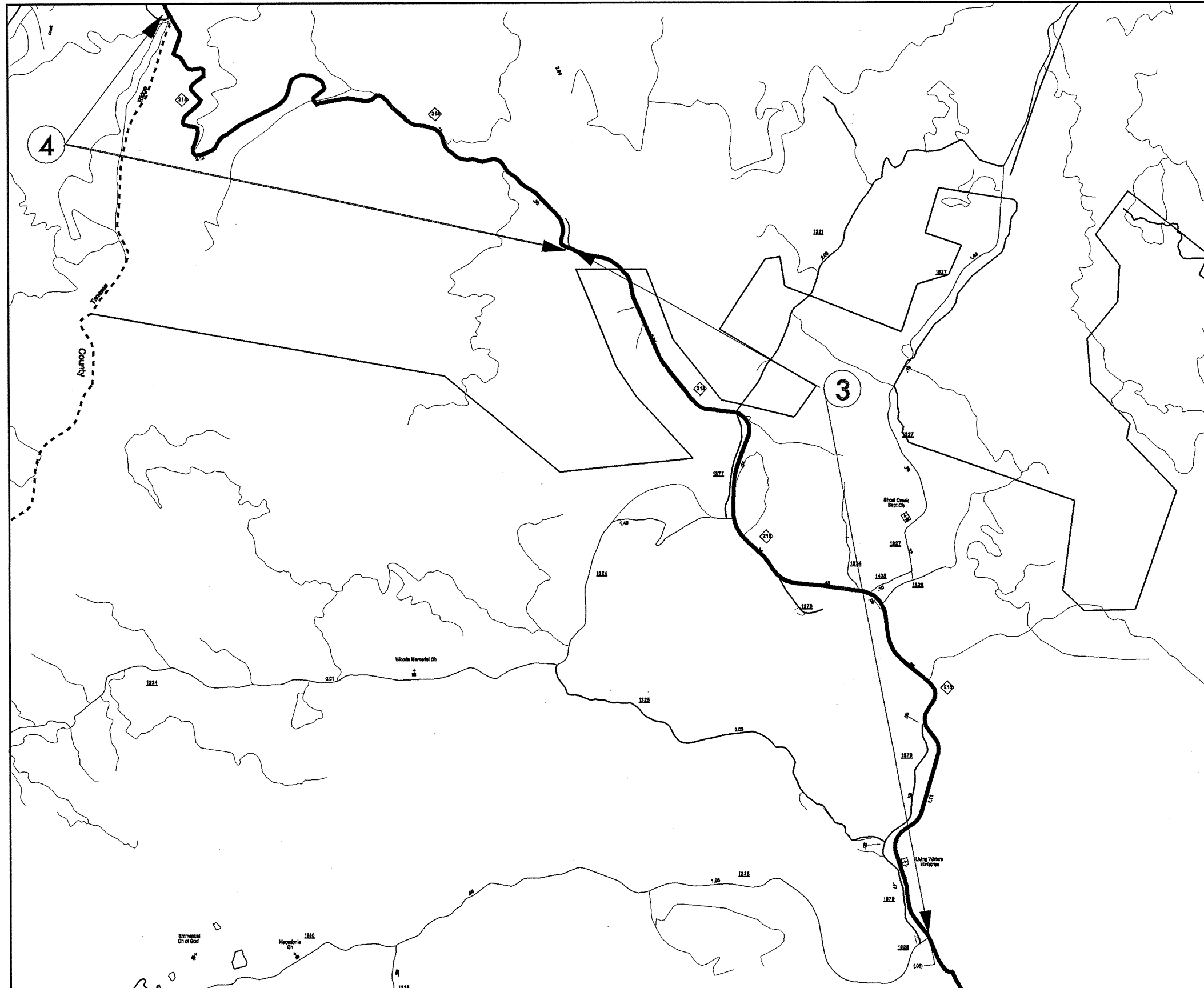
PROJECT REFERENCE NO.		SHEET NO.
14CR.10501.4		1 OF 13
STATE PROJECT	F.A. PROJECT NO.	DESCRIPTION
14CR.10501.4		
14CR.10881.4		
14.CR.20881.8		



060197

# 2009 CONTRACT RESURFACING TRANSYLVANIA COUNTY

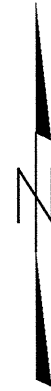
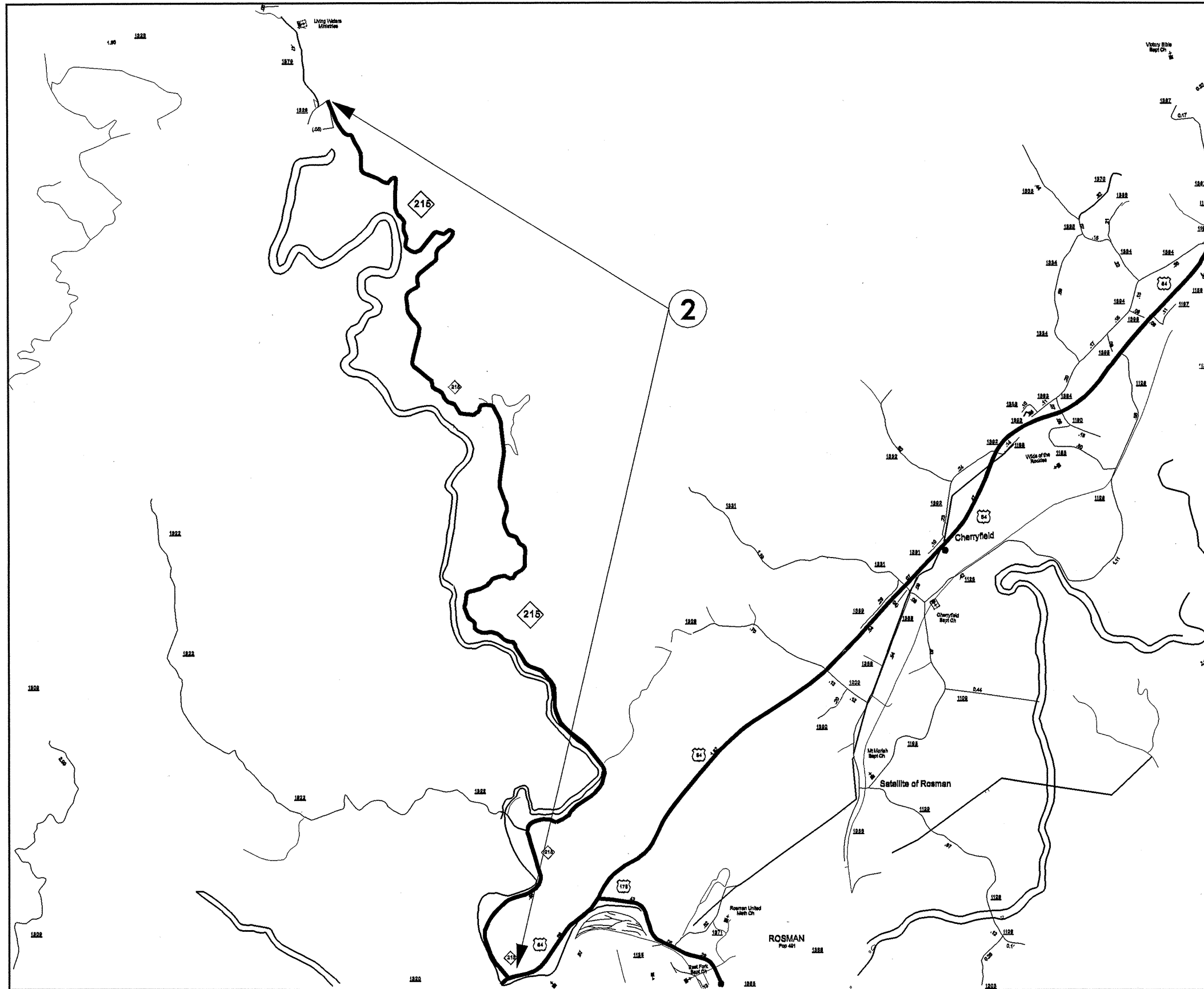
PROJECT REFERENCE NO.		SHEET NO.
14CR.10501.4		2 OF 13
STATE PROJECT	F.A. PROJECT NO.	DESCRIPTION
14CR.10501.4		
14CR.10881.4		
14.CR.20881.8		



060197

# 2009 CONTRACT RESURFACING TRANSYLVAINA COUNTY

PROJECT REFERENCE NO.		SHEET NO.
14CR.10501.4		3 OF 13
STATE PROJECT	F.A. PROJECT NO.	DESCRIPTION
14CR.10501.4		
14CR.10881.4		
14.CR.20881.8		



050197

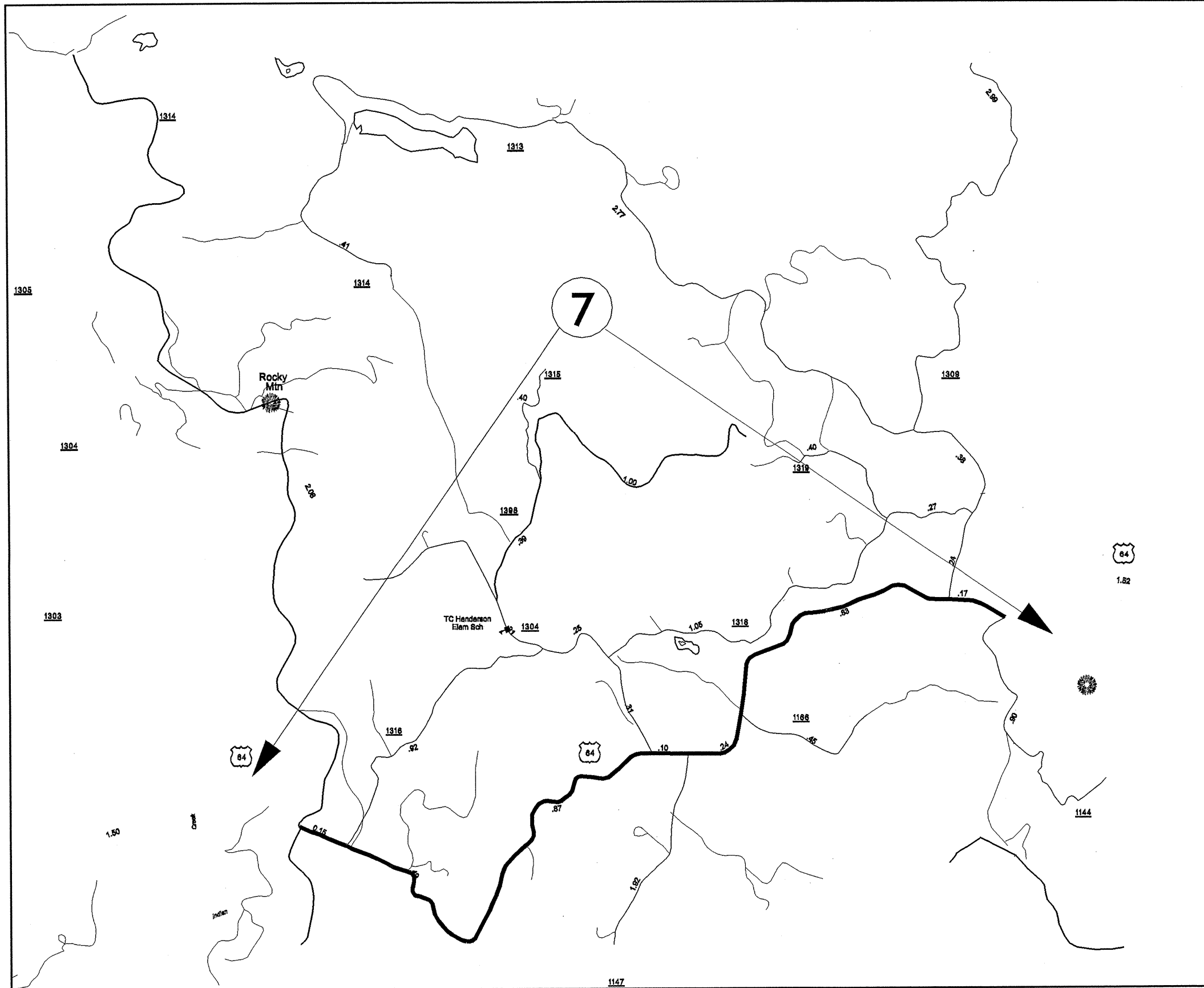
# 2009 CONTRACT RESURFACING TRANSYLVANIA COUNTY

PROJECT REFERENCE NO.		SHEET NO.
14CR10801.4		4 OF 13
STATE PROJECT	F.A. PROJECT NO.	DESCRIPTION
14CR10801.4		
14CR10881.4		
14.CR.20881.8		



# 2009 CONTRACT RESURFACING TRANSYLVAINA COUNTY

PROJECT REFERENCE NO.		SHEET NO.
14CR.10501.4		5 OF 13
STATE PROJECT	F.A. PROJECT NO.	DESCRIPTION
14CR.10501.4		
14CR.10881.4		
14.CR.20881.8		

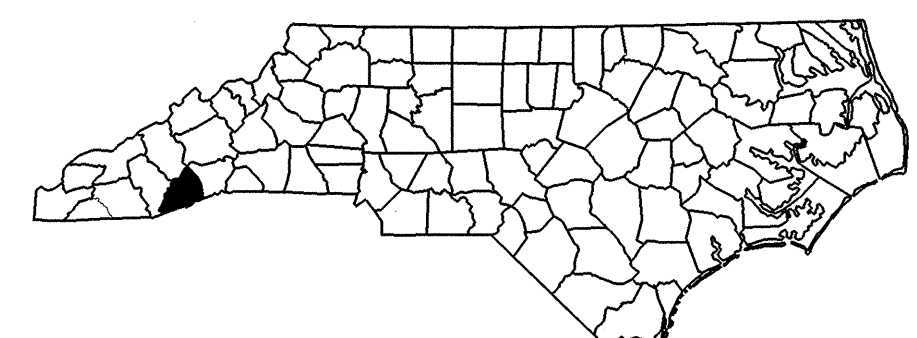
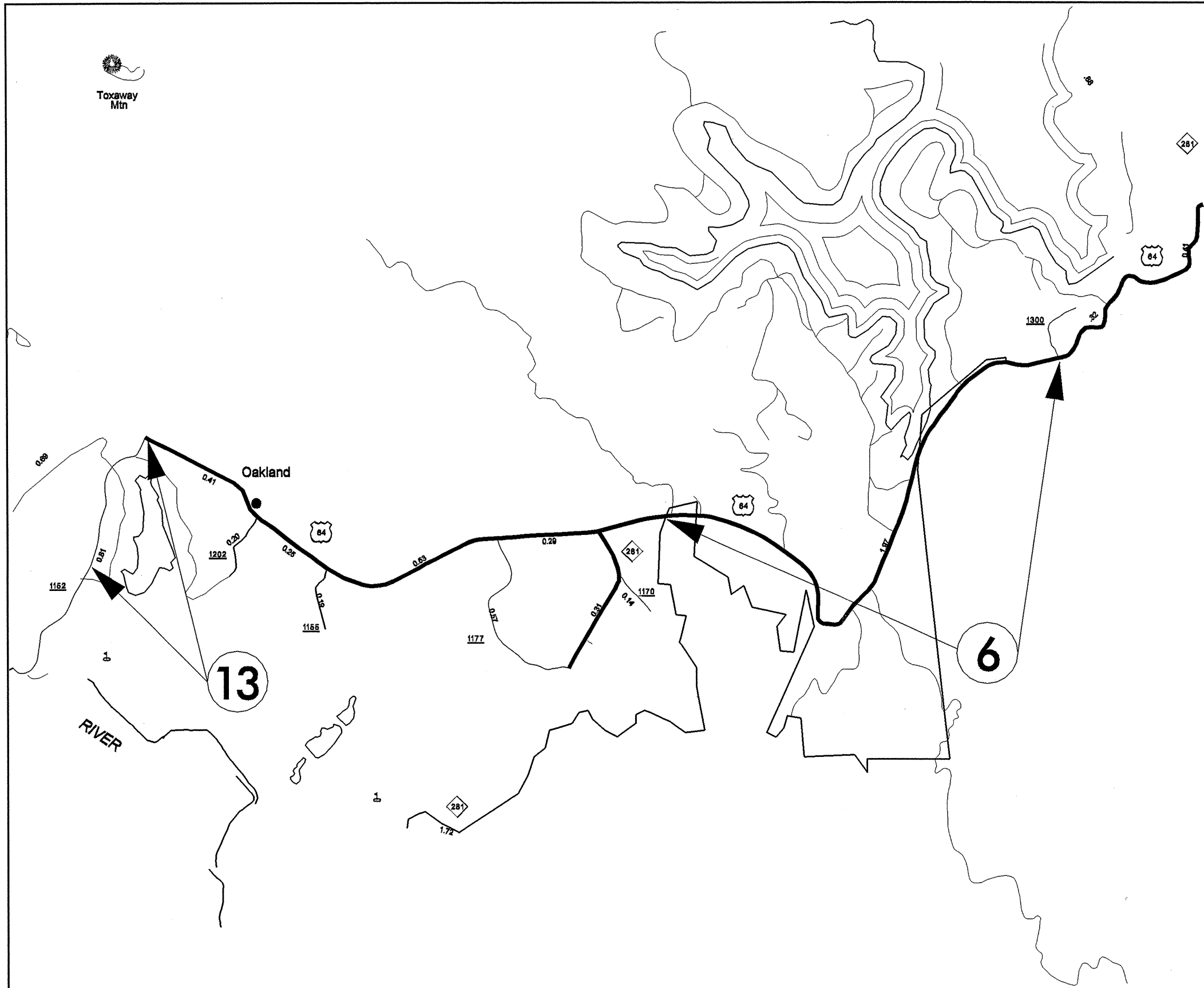


050197

090197

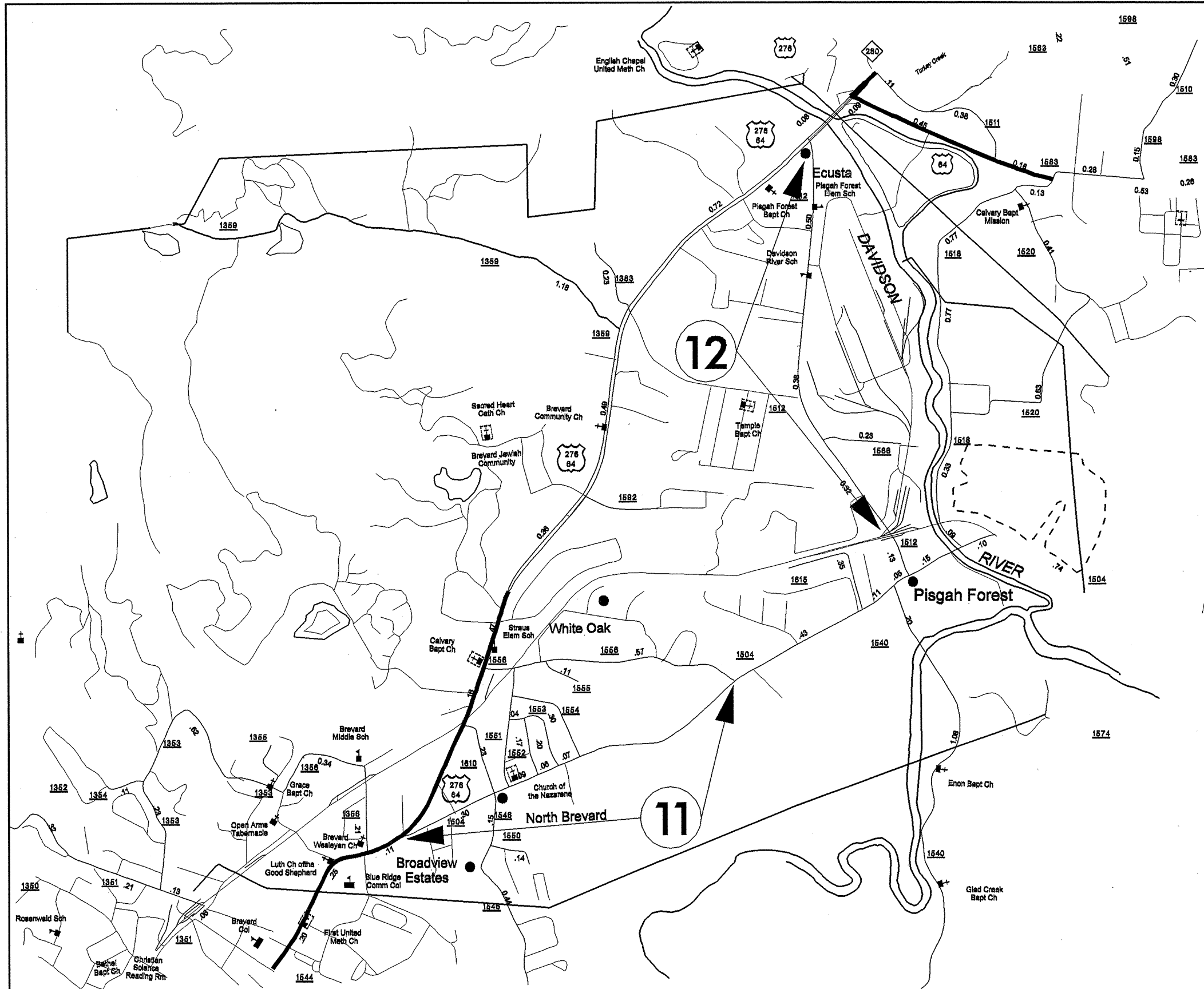
# 2009 CONTRACT RESURFACING TRANSYLVAINA COUNTY

PROJECT REFERENCE NO.		SHEET NO.
14CR.10501.4		6 OF 13
STATE PROJECT	F.A. PROJECT NO.	DESCRIPTION
14CR.10501.4		
14CR.10881.4		
14.CR.20881.8		



# 2009 CONTRACT RESURFACING TRANSYLVAINA COUNTY

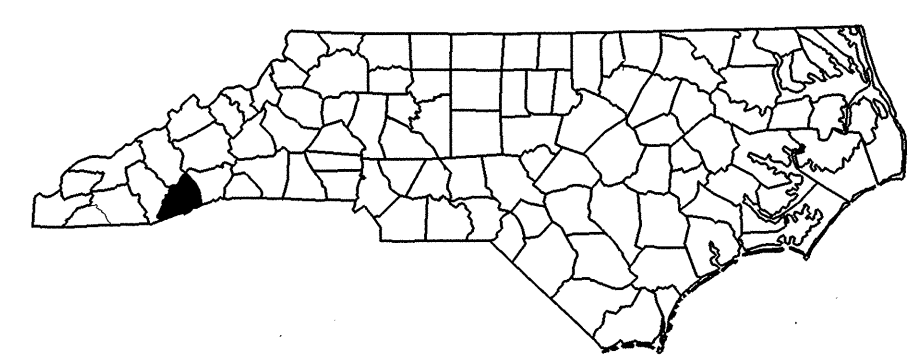
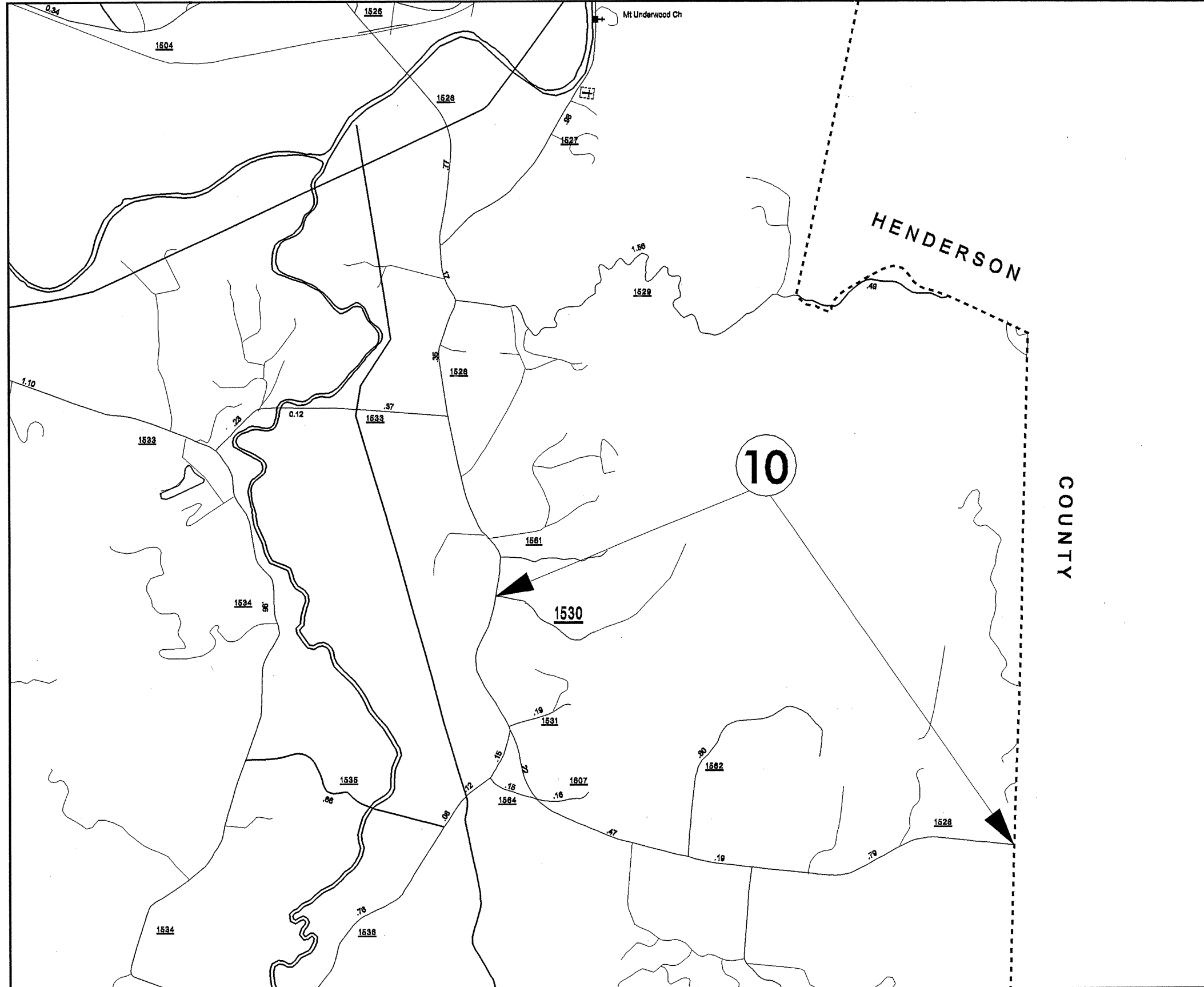
PROJECT REFERENCE NO.		SHEET NO.
14CR.10501.4		7 OF 13
STATE PROJECT	F.A. PROJECT NO.	DESCRIPTION
14CR.10501.4		
14CR.10581.4		
14.CR.20881.8		



06/01/97

# 2009 CONTRACT RESURFACING TRANSYLVAINA COUNTY

PROJECT REFERENCE NO.		SHEET NO.
14CR.10501.4		8 OF 13
STATE PROJECT	F.A. PROJECT NO.	DESCRIPTION
14CR.10501.4		
14CR.10881.4		
14.CR.20881.8		

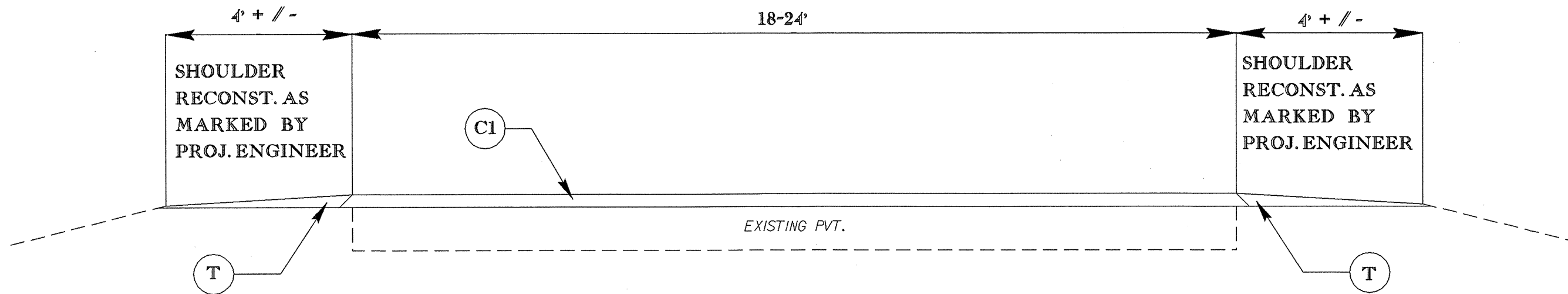




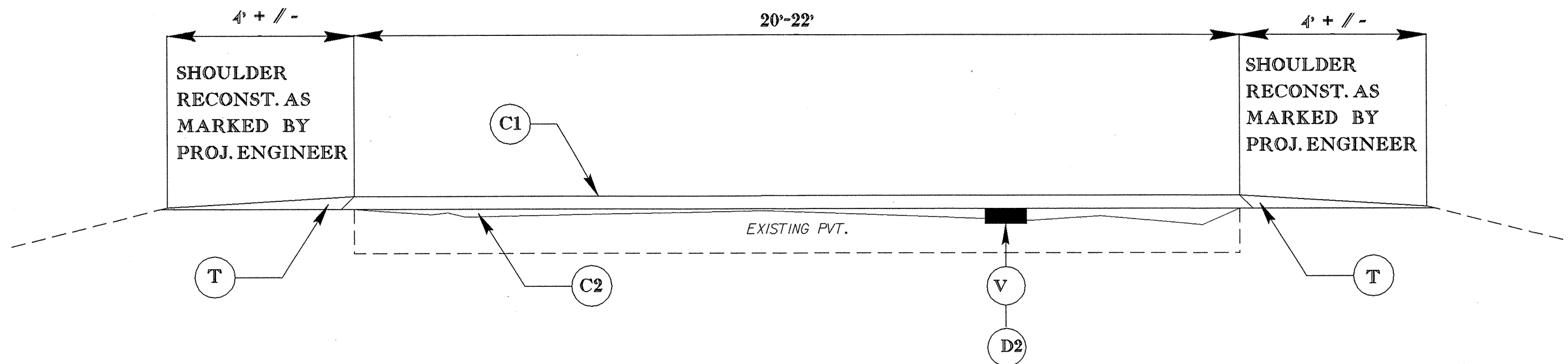
060197

PROJECT REFERENCE NO.		SHEET NO.
14CR.10801.4		9 OF 13
STATE PROJECT	F.A. PROJECT NO.	DESCRIPTION
14CR.10801.4		
14CR.10881.4		
14CR.10881.8		

# TYPICAL 1



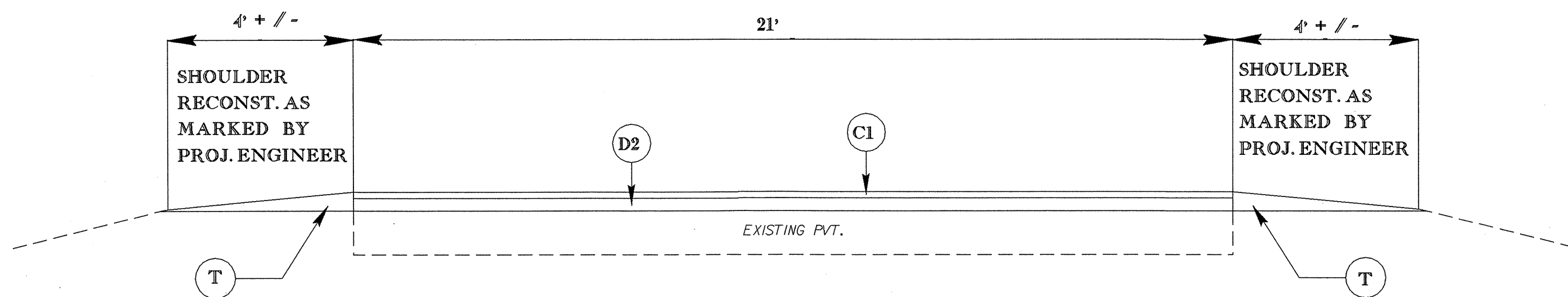
# TYPICAL 2



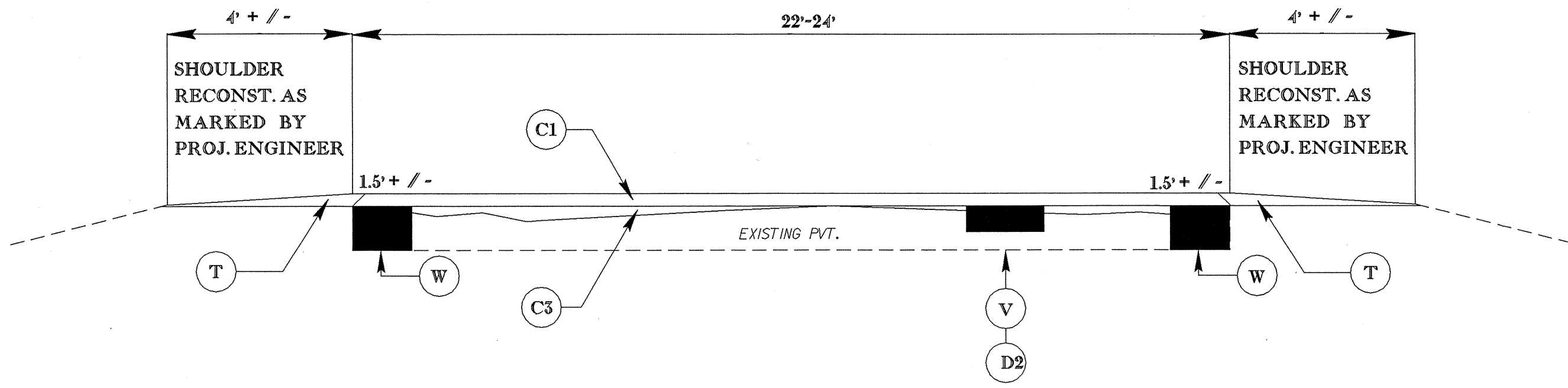
050197

PROJECT REFERENCE NO.		SHEET NO.
14CR.10501.4		10 OF 18
STATE PROJECT	F.A. PROJECT NO.	DESCRIPTION
14CR.10501.4		
14CR.10881.4		
14CR.20881.8		

# TYPICAL 3



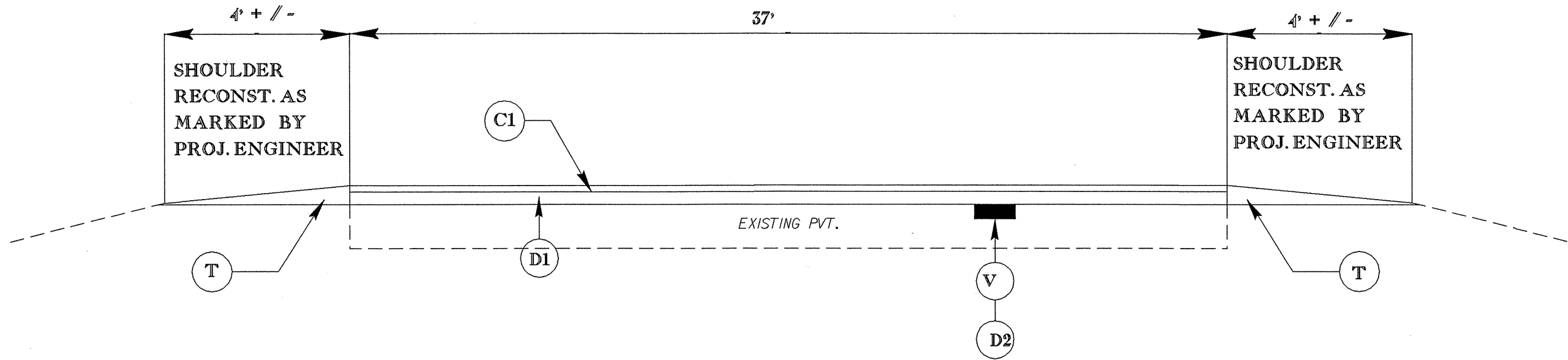
# TYPICAL 4



050137

PROJECT REFERENCE NO.		SHEET NO.
14CR.10501.4		11 OF 13
STATE PROJECT	F.A. PROJECT NO.	DESCRIPTION
14CR.10501.4		
14CR.10881.4		
14CR.20881.8		

# TYPICAL 5



050197

PROJECT REFERENCE NO.		SHEET NO.
14CR.10501.4		12 OF 18
STATE PROJECT	F.A. PROJECT NO.	DESCRIPTION
14CR.10501.4		
14CR.10881.4		
14CR.20881.8		

### SURFACING SCHEDULE

ITEM NO	DESCRIPTION
C1	ASPHALT CONCRETE SURFACE COURSE, TYPE S9.5B, AT AN AVERAGE RATE OF 168 LBS. PER SQ. YD. (1 1/2")
C2	PROPOSED VARIABLE DEPTH ASPHALT CONCRETE SURFACE COURSE, TYPE SF9.5A, AT AN AVERAGE RATE OF 70 LBS PER SQ. YD. (LEVELING COURSE)
C3	PROPOSED VARIABLE DEPTH ASPHALT CONCRETE SURFACE COURSE, TYPE SF9.5A, AT AN AVERAGE RATE OF 112 LBS PER SQ. YD. (LEVELING COURSE)
D1	ASPHALT CONCRETE INTERMEDIATE COURSE, TYPE I19.0B, AT AN AVERAGE RATE OF 285 LBS PER SQ. YD. (2 1/2")
D2	ASPHALT CONCRETE INTERMEDIATE COURSE, TYPE I19.0B, AT AN AVERAGE RATE OF 342 LBS PER SQ. YD. (3")
T	SHOULDER RECONSTRUCTION WITH ABCM—SEE SPECIAL PROVISIONS
V	MILLING ASPHALT PAVEMENT 3" IN DEPTH & 4FT. OR GREATER IN WIDTH AS DIRECTED BY PROJECT ENGINEER
W	ASPHALT CONCRETE BASE CSE., TYPE B25.0B, AT AN AVERAGE RATE OF 912 LBS. PER SQ. YD. (8"). (WIDENING— SEE SPECIAL PROVISIONS)

ALL PAVEMENT SLOPES ARE 1:1 UNLESS OTHERWISE SHOWN

PROJECT NO.	SHEET NO.	TOTAL NO.
14CR.10501.4, 14CR.10881.4 14CR.20881.8	13	13

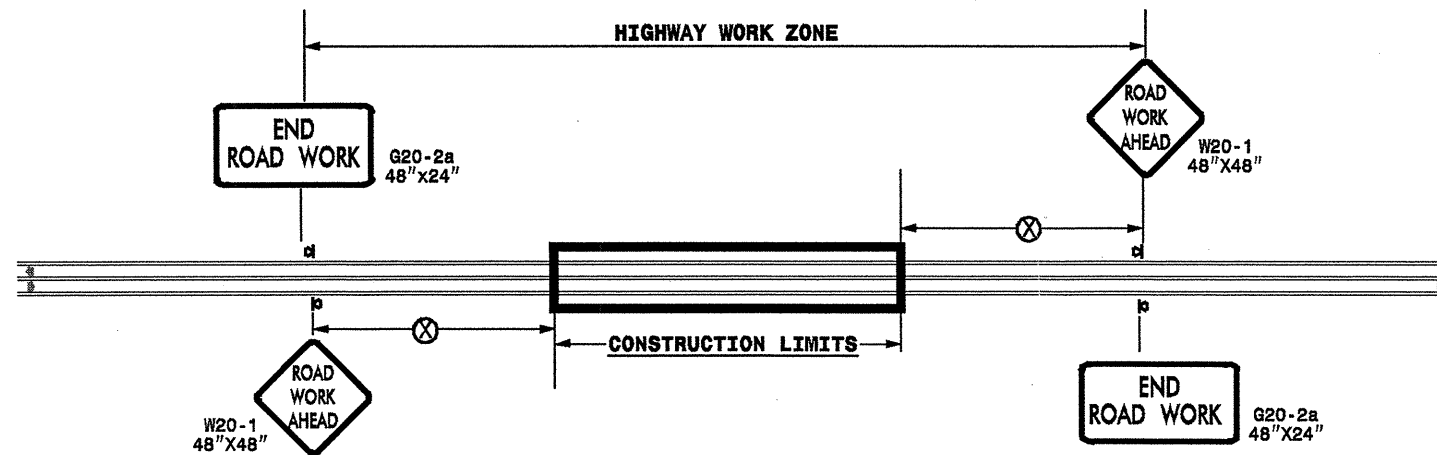
### SUMMARY OF QUANTITIES

PROJECT NO	COUNTY	MAP NO	ROUTE	DESCRIPTION	TYP	LENGTH MI	FINAL SURFACE TESTING	WIDTH FT	SHOULDER RECONSTRUCTION SMI	3" MILLING SY	BASE COURSE, B25.0B TONS	INTERMEDIATE COURSE, I19.0B TONS	SURFACE COURSE, S9.5B TONS	SURFACE COURSE, SF9.5A (LEVELING COURSE) TONS	PG 64-22 PLANT MIX TONS	ADJ. OF MANHOLES EA	ADJ. OF METER OR VALVE BOX EA
14CR.10501.4	Jackson	1	NC215	FROM HAYWOOD CO. TO HAYWOOD CO.	2	0.55	NO	22	1.10	710		127	626	261	60		
<b>TOTAL FOR PROJ NO. 14CR.10501.4</b>						<b>0.55</b>			<b>1.10</b>	<b>710</b>		<b>127</b>	<b>626</b>	<b>261</b>	<b>60</b>		
14CR.10881.4	Transylvania	2	NC215	FROM US64 TO SR1326	2	6.04	NO	20	12.06	3,535		635	6,251	2,604	574		
		3	NC215	FROM SR1326 TO COURTHOUSE CREEK	3	4.39	NO	21	8.80			9,711	4,770		743		
		4	NC215	FROM COURTHOUSE CREEK TO JACKSON CO.	2	3.37	NO	22	6.75	4,550		817	3,836	1,598	372		
		5	NC215	FROM JACKSON CO. TO HAYWOOD CO	2	2.72	NO	22	5.44	3,500		628	3,096	1,290	299		
		6	US64	FROM NC281 TO PVMT CHNG 0.27 MI. EAST OF SR1300	4	2.27	NO	22	4.54	6,442	1,024	1,157	2,467	1,644	353		
		7	US64	FROM 0.34 MI. WEST OF SR1147 TO 0.25 MI. EAST OF SR1144	4	3.42	NO	22	6.84	11,404	1,159	2,048	3,893	2,595	548		
		8	US64	FROM 0.25 MI. EAST OF SR1144 TO 0.90 MILE EAST OF SR1144	5	0.65	NO	37	1.30	4,840		2,923	1,221		211		
		9	US64	FROM 0.90 MI. EAST OF SR1144 TO US178	4	2.1	NO	24	4.20	2,323	603	417	2,608	1,739	315		
<b>TOTAL FOR PROJ NO. 14CR.10881.4</b>						<b>24.96</b>			<b>49.93</b>	<b>36,594</b>	<b>2,786</b>	<b>18,336</b>	<b>28,142</b>	<b>11,470</b>	<b>3,415</b>		
14CR.20881.8	Transylvania	10	SR1528	FROM SR1530 TO HENDERSON CO	1	2	NO	24	4.00				2,484		149		
		11	SR1504	FROM US64 TO SR1556	1	1	NO	20	2.00				1,035		62	4	9
		12	SR1512	FROM US64 TO SR1504	1	1.3	NO	22	2.60				1,480		89	8	4
		13	SR1152	FROM US64 TO END OF PAVEMENT	1	1	NO	18	2.00				931		56		
<b>TOTAL FOR PROJ NO. 14CR.20881.8</b>						<b>5.3</b>			<b>10.60</b>				<b>5,930</b>		<b>356</b>	<b>12</b>	<b>13</b>
<b>GRAND TOTAL</b>						<b>30.81</b>			<b>61.63</b>	<b>37,304</b>	<b>2,786</b>	<b>18,463</b>	<b>34,698</b>	<b>11,731</b>	<b>3,831</b>	<b>12</b>	<b>13</b>

### PAINT QUANTITIES

PROJECT NO	COUNTY	MAP NO	ROUTE	DESCRIPTION	4810000000-E		4820000000-E	4835000000-E	4840000000-N	4845000000-N	4845000000-N	4845000000-N
					4" WHITE PAINT LF	4" YELLOW PAINT LF	8" YELLOW PAINT LF	24" WHITE PAINT LF	PAINT MSG SCHOOL EA	PAINT LT ARROW EA	PAINT STR ARROW EA	PAINT RT ARROW EA
14CR.10501.4	Jackson	1	NC215	FROM HAYWOOD CO. TO HAYWOOD CO.	17,400	17,400		30				
<b>TOTAL FOR PROJ NO. 14CR.10501.4</b>					<b>17,400</b>	<b>17,400</b>		<b>30</b>				
					<b>34,800</b>							
14CR.10881.4	Transylvania	2	NC215	FROM US64 TO SR1326	190,800	190,800		60				
		3	NC215	FROM SR1326 TO COURTHOUSE CREEK	139,200	139,200		200				
		4	NC215	FROM COURTHOUSE CREEK TO JACKSON CO.	106,800	106,800						
		5	NC215	FROM JACKSON CO. TO HAYWOOD CO	85,800	85,800						
		6	US64	FROM NC281 TO PVMT CHNG 0.27 MI. EAST OF SR1300	72,228	73,068		200		3		
		7	US64	FROM 0.34 MI. WEST OF SR1147 TO 0.25 MI. EAST OF SR1144	108,345	108,345		208	12			
		8	US64	FROM 0.25 MI. EAST OF SR1144 TO 0.90 MILE EAST OF SR1144	23,238	20,658					2	
		9	US64	FROM 0.90 MI. EAST OF SR1144 TO US178	66,528	71,712	1,350					2
<b>TOTAL FOR PROJ NO. 14CR.10881.4</b>					<b>792,939</b>	<b>796,383</b>	<b>1,350</b>	<b>668</b>	<b>12</b>	<b>3</b>	<b>2</b>	<b>2</b>
					<b>1,589,322</b>							
14CR.20881.8	Transylvania	10	SR1528	FROM SR1530 TO HENDERSON CO	42,240	42,240						
		11	SR1504	FROM US64 TO SR1556	21,120	21,120						
		12	SR1512	FROM US64 TO SR1504	27,456	27,456						
		13	SR1152	FROM US64 TO END OF PAVEMENT	21,120	21,120						
<b>TOTAL FOR PROJ NO. 14CR.20881.8</b>					<b>111,936</b>	<b>111,936</b>						
					<b>223,872</b>							
<b>GRAND TOTAL</b>					<b>922,275</b>	<b>925,719</b>	<b>1,350</b>	<b>698</b>	<b>12</b>	<b>3</b>	<b>2</b>	<b>2</b>
					<b>1,847,994</b>							

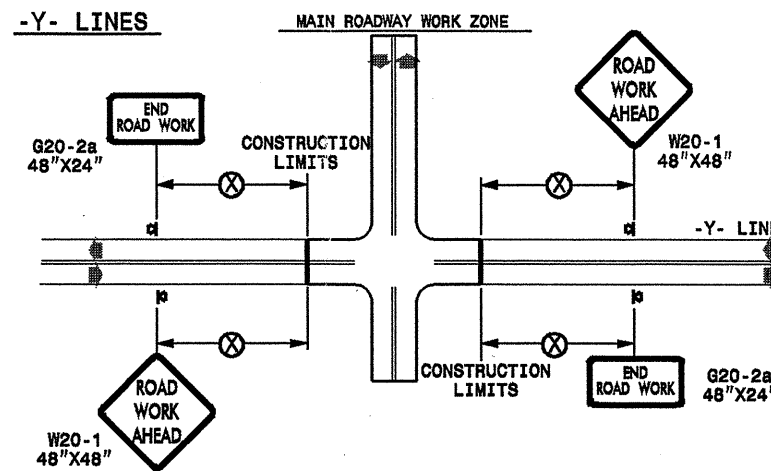
**TWO-WAY UNDIVIDED \*\* (L-LINES)**



POSTED SPEED LIMIT (M.P.H.)	RECOMMENDED MINIMUM SIGN SPACING
≤ 50	500'
≥ 55	1000'

STATE OF NORTH CAROLINA  
DEPT. OF TRANSPORTATION  
DIVISION OF HIGHWAYS  
RALEIGH, N.C.

**ROADWAYS INTERSECTING ALONG 2 WAY UNDIVIDED WORK ZONE (Y-LINES)**



**GENERAL NOTES**

- USE FLUORESCENT ORANGE SHEETING (TYPE VII OR HIGHER) ON ALL ADVANCE WORK ZONE SIGNS.
- DO NOT INSTALL ADVANCE WARNING SIGNS MORE THAN 3 DAYS PRIOR TO BEGINNING OF WORK.
- ALL SIGN SPACING DIMENSIONS ARE APPROXIMATE, FIELD ADJUST AS NECESSARY OR AS DIRECTED.
- USE PORTABLE WORK ZONE SIGNS ONLY WITH PORTABLE WORK ZONE SIGN STANDS SPECIFICALLY DESIGNED FOR ONE ANOTHER. PORTABLE WORK ZONE SIGNS MAY BE ROLL UP OR APPROVED COMPOSITE.
- PROVIDE PORTABLE WORK ZONE SIGN STANDS, PORTABLE SIGNS AND SIGN SHEETING WHICH ARE LISTED ON THE NORTH CAROLINA DEPARTMENT OF TRANSPORTATION'S APPROVED PRODUCT LIST OR ACCEPTED AS TRAFFIC QUALIFIED BY THE TRAFFIC CONTROL UNIT.
- \*\* TWO-WAY UNDIVIDED ADVANCE WARNING SIGN CONFIGURATION MAY BE USED ON URBAN MULTI-LANE FACILITIES WHERE CONDITIONS LIMIT THE USE OF DUAL MOUNTED SIGNS AS DETERMINED BY THE ENGINEER.

**LEGEND**

- ▣ PORTABLE SIGN
- ➔ DIRECTION OF TRAFFIC FLOW

SHEET 1 OF 1

DETAIL DRAWING  
FOR TWO-WAY UNDIVIDED  
WORK ZONE WARNING SIGNS

APPROVED: _____ DATE: _____	DETAIL DRAWING FOR TWO-WAY UNDIVIDED ADVANCED WORK ZONE WARNING SIGNS	SCALE: NONE		REVISIONS
SEAL		DATE: 7-98		10/01
		DWG. BY: 10-98	03/04	
		DESIGN BY: 01/01	11/04	
		REVIEWED BY:		

10-NOV-2009 18:07  
 s:\signing\resurfacing\030509\resurfacing\2010\div14\c2025080-c-14cr105014x3-jacksontransy-us64m13\c2025080-c-14cr105014x3-2wayundivurbfrwys\july2006\_portable.dgn  
 psey/more AT #ZTC237502