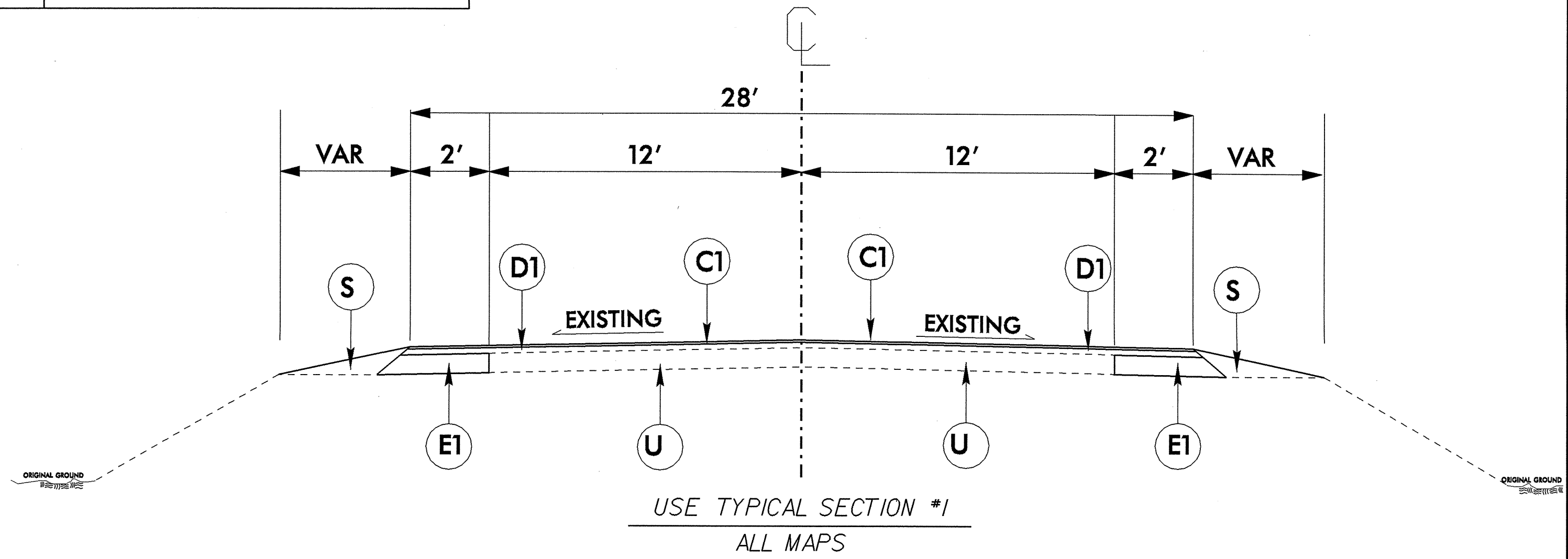


GREENE COUNTY, MAP #1, WBS ELEMENT 2CR.10401.10
WIDEN AND RESURFACE US 258 FROM NC 123 TO PITT COUNTY LINE. (4.6 MILES)
GREENE COUNTY, MAP #2, WBS ELEMENT 2CR.10401.11
WIDEN AND RESURFACE US 13 FROM US 258 TO PITT COUNTY LINE. (2.2 MILES)
PITT COUNTY, MAP #3, WBS ELEMENT 2CR.10741.7
WIDEN AND RESURFACE US 258 FROM US 264A TO GREENE COUNTY LINE. (1.3 MILES)
PITT COUNTY, MAP #4, WBS ELEMENT 2CR.10741.8
WIDEN AND RESURFACE US 13 FROM US 264A TO GREENE COUNTY LINE. (1.5 MILES)

PROJECT REFERENCE NO. 2CRJ0401J0, ETC	SHEET NO. 2 OF 3
ROADWAY DESIGN ENGINEER	PAVEMENT DESIGN ENGINEER

PAVEMENT SCHEDULE	
C1	PROP. APPROX. 1½" ASPHALT CONC. SURFACE COURSE, TYPE S9.5B, AT AN AVERAGE RATE OF 168 LBS. PER SQ. YD.
D1	PROP. APPROX. 2½" ASPHALT CONC. INTERMEDIATE COURSE, TYPE I19.0B, AT AN AVERAGE RATE OF 285 LB. PER SQ.YD.
E1	PROP. APPROX. 5" ASPHALT CONC. BASE COURSE, TYPE B25.0B, AT AN AVERAGE RATE OF 570 LB. PER SQ.YD.
S	SHOULDER RECONSTRUCTION
U	EXISTING PAVEMENT



PROJECT NO.	SHEET NO.	TOTAL NO.
2CR.10401.10, 2CR.10401.11 2CR.10741.7, ETC.	3	3

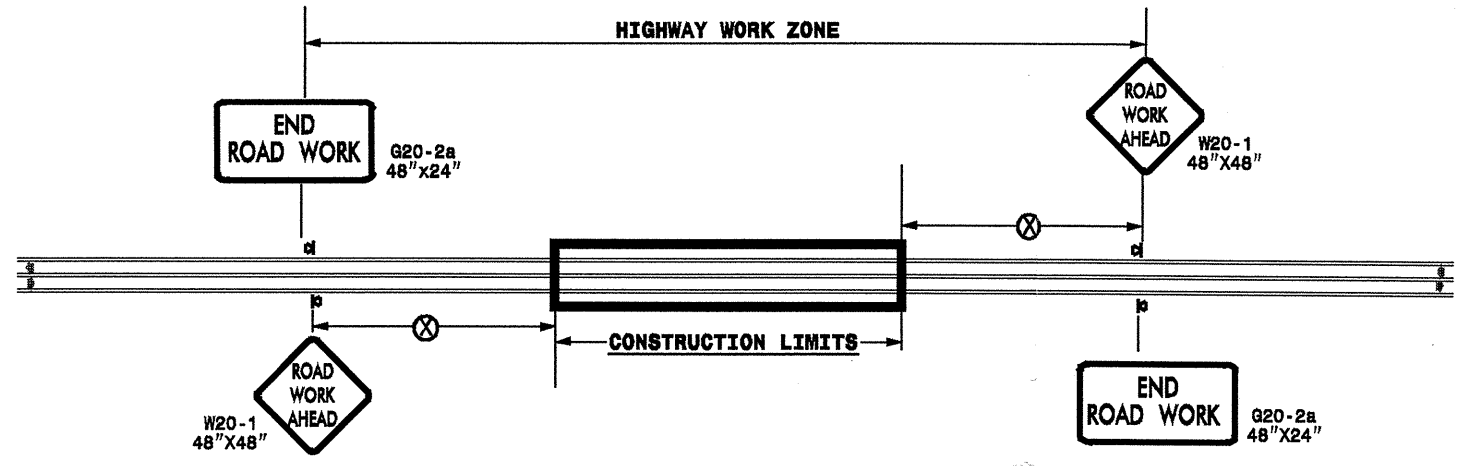
SUMMARY OF QUANTITIES

PROJECT NO	COUNTY	MAP NO	ROUTE	DESCRIPTION	TYP NO	LENGTH MI	WIDTH FT	FINAL SURFACE TESTING	INCIDENTAL STONE BASE TONS	SHOULDER RECONSTR. SMI	BASE COURSE, B25.0B TONS	INTERMEDIATE COURSE, I19.0B TONS	SURFACE COURSE, S9.5B TONS	PG 64-22 PLANT MIX TONS	6" CONC. DRIVEWAYS SY	ADJ. OF METER OR VALVE BOX EA	SEED & MULCHING AC
2CR.10401.10	Greene	1	US 258	FROM NC 123 TO PITT CO. LINE	1	4.6	28	Yes	125	9.2	3,737	11,933	7,013	1,142	132	2	9.20
TOTAL FOR PROJ NO. 2CR.10401.10						4.6			125	9.2	3,737	11,933	7,013	1,142	132	2	9.20
2CR.10401.11	Greene	2	US 13	FROM US 258 TO PITT CO. LINE	1	2.2	28	Yes	125	4.4	1,787	5,707	3,354	546	132	2	4.40
TOTAL FOR PROJ NO. 2CR.10401.11						2.2			125	4.4	1,787	5,707	3,354	546	132	2	4.40
2CR.10741.7	Pitt	3	US 258	FROM US 264A TO GREENE CO. LINE	1	1.3	28	Yes	125	2.6	1,056	3,372	1,982	323	50		2.60
TOTAL FOR PROJ NO. 2CR.10741.7						1.3			125	2.6	1,056	3,372	1,982	323	50		2.60
2CR.10741.8	Pitt	4	US 13	FROM US 264A TO GREENE CO. LINE	1	1.5	28	Yes	125	2	1,218	3,891	2,287	372	50		3.00
TOTAL FOR PROJ NO. 2CR.10741.8						1.5			125	2	1,218	3,891	2,287	372	50		3.00
GRAND TOTAL						9.6			500	18.2	7,798	24,903	14,636	2,383	364	4	19.20

THERMOPLASTIC AND PAINT QUANTITIES

PROJECT NO	COUNTY	MAP NO	ROUTE	DESCRIPTION	4685000000-E	4686000000-E	4710000000-E	4725000000-E	4810000000-E	
					4" X 90 M WHITE THERMO LF	4" X 120 M YELLOW THERMO LF	24" X 120 M WHITE THERMO LF	THERMO LT ARROW 90 M EA	4" YELLOW PAINT LF	4" WHITE PAINT LF
2CR.10401.10	Greene	1	US 258	FROM NC 123 TO PITT CO. LINE	49,496	30,360	200	8	30,360	49,496
TOTAL FOR PROJ NO. 2CR.10401.10					49,496	30,360	200	8	30,360	49,496
2CR.10401.11	Greene	2	US 13	FROM US 258 TO PITT CO. LINE	23,672	14,520	200	3	14,520	23,672
TOTAL FOR PROJ NO. 2CR.10401.11					23,672	14,520	200	3	14,520	23,672
2CR.10741.7	Pitt	3	US 258	FROM US 264A TO GREENE CO. LINE	13,988	8,580	100		8,580	13,988
TOTAL FOR PROJ NO. 2CR.10741.7					13,988	8,580	100		8,580	13,988
2CR.10741.8	Pitt	4	US 13	FROM US 264A TO GREENE CO. LINE	16,140	9,900	100		9,900	16,140
TOTAL FOR PROJ NO. 2CR.10741.8					16,140	9,900	100		9,900	16,140
GRAND TOTAL					103,296	63,360	600	11	63,360	103,296
166,656										

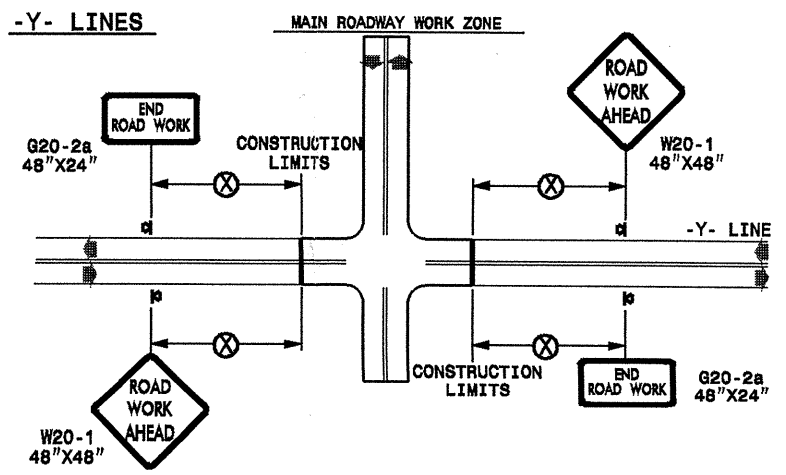
TWO-WAY UNDIVIDED ** (L-LINES)



POSTED SPEED LIMIT (M.P.H.)	RECOMMENDED MINIMUM SIGN SPACING
≤ 50	500'
≥ 55	1000'

STATE OF NORTH CAROLINA
DEPT. OF TRANSPORTATION
DIVISION OF HIGHWAYS
RALEIGH, N.C.

ROADWAYS INTERSECTING ALONG 2 WAY UNDIVIDED WORK ZONE (Y-LINES)



DETAIL DRAWING
FOR TWO-WAY UNDIVIDED
WORK ZONE WARNING SIGNS

GENERAL NOTES

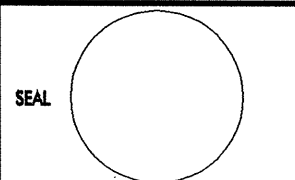

- USE FLUORESCENT ORANGE SHEETING (TYPE VII OR HIGHER) ON ALL ADVANCE WORK ZONE SIGNS.
- DO NOT INSTALL ADVANCE WARNING SIGNS MORE THAN 3 DAYS PRIOR TO BEGINNING OF WORK.
- ALL SIGN SPACING DIMENSIONS ARE APPROXIMATE, FIELD ADJUST AS NECESSARY OR AS DIRECTED.
- USE PORTABLE WORK ZONE SIGNS ONLY WITH PORTABLE WORK ZONE SIGN STANDS SPECIFICALLY DESIGNED FOR ONE ANOTHER. PORTABLE WORK ZONE SIGNS MAY BE ROLL UP OR APPROVED COMPOSITE.
- PROVIDE PORTABLE WORK ZONE SIGN STANDS, PORTABLE SIGNS AND SIGN SHEETING WHICH ARE LISTED ON THE NORTH CAROLINA DEPARTMENT OF TRANSPORTATION'S APPROVED PRODUCT LIST OR ACCEPTED AS TRAFFIC QUALIFIED BY THE TRAFFIC CONTROL UNIT.
- ** TWO-WAY UNDIVIDED ADVANCE WARNING SIGN CONFIGURATION MAY BE USED ON URBAN MULTI-LANE FACILITIES WHERE CONDITIONS LIMIT THE USE OF DUAL MOUNTED SIGNS AS DETERMINED BY THE ENGINEER.

LEGEND

◀ PORTABLE SIGN

➡ DIRECTION OF TRAFFIC FLOW

SHEET 1 OF 1

APPROVED: _____	DATE: _____	DETAIL DRAWING FOR TWO-WAY UNDIVIDED ADVANCED WORK ZONE WARNING SIGNS	
			
SCALE: NONE		REVISIONS	
DATE: _____		7-98	10/01
DWG. BY: _____		10-98	09/04
DESIGN BY: _____		01/01	11/04
REVIEWED BY: _____	CAD FILE		

18-NOV-2009 19:46
 sta:signing\resur\factng2010\div02\c202510a-d\2cr104010x4_2wayundivurbfrwys\july2006_portable.dgn
 P0271019