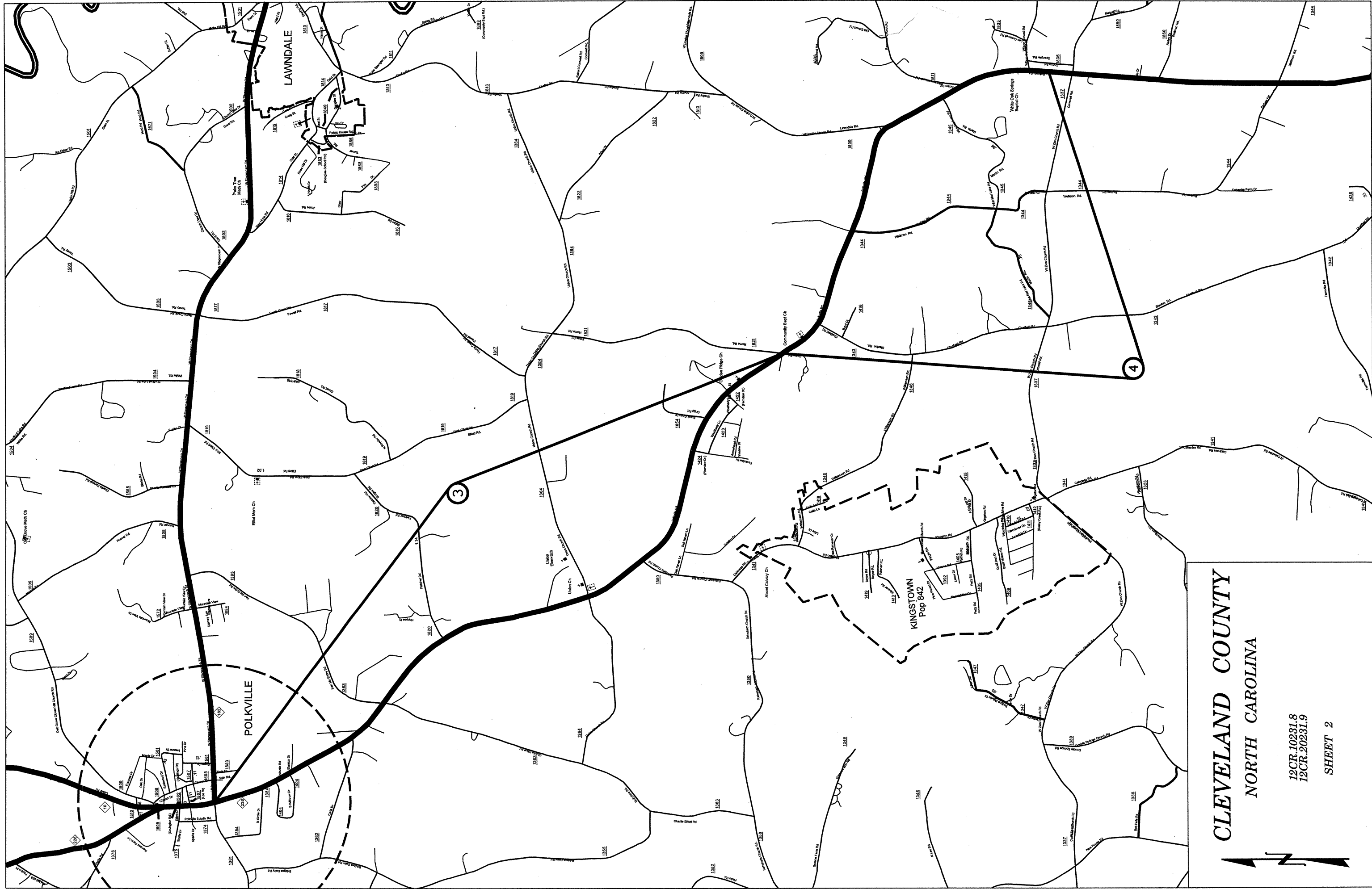


CLEVELAND COUNTY
NORTH CAROLINA

12CR.10231.8
12CR.20231.9
SHEET 1



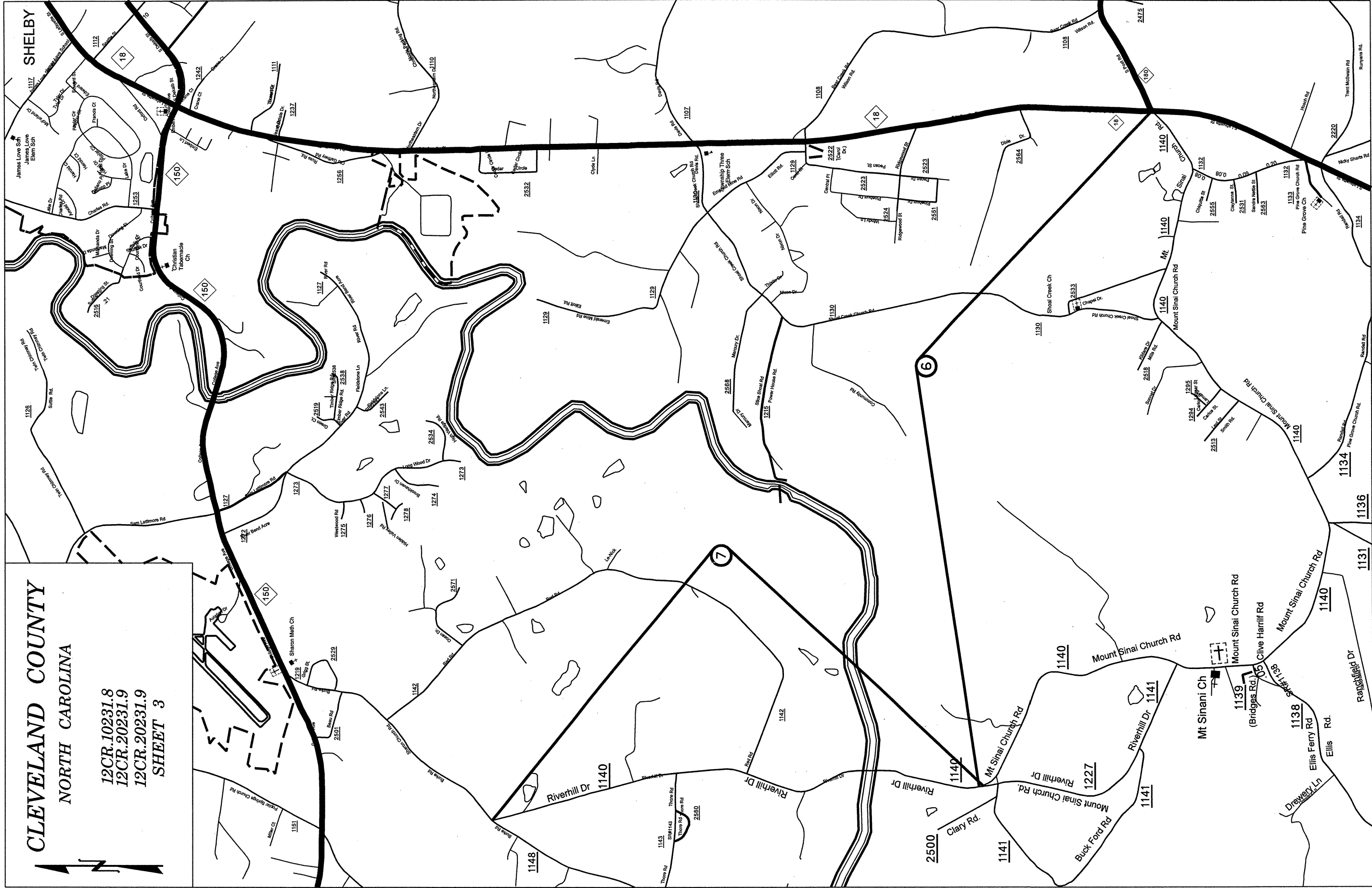


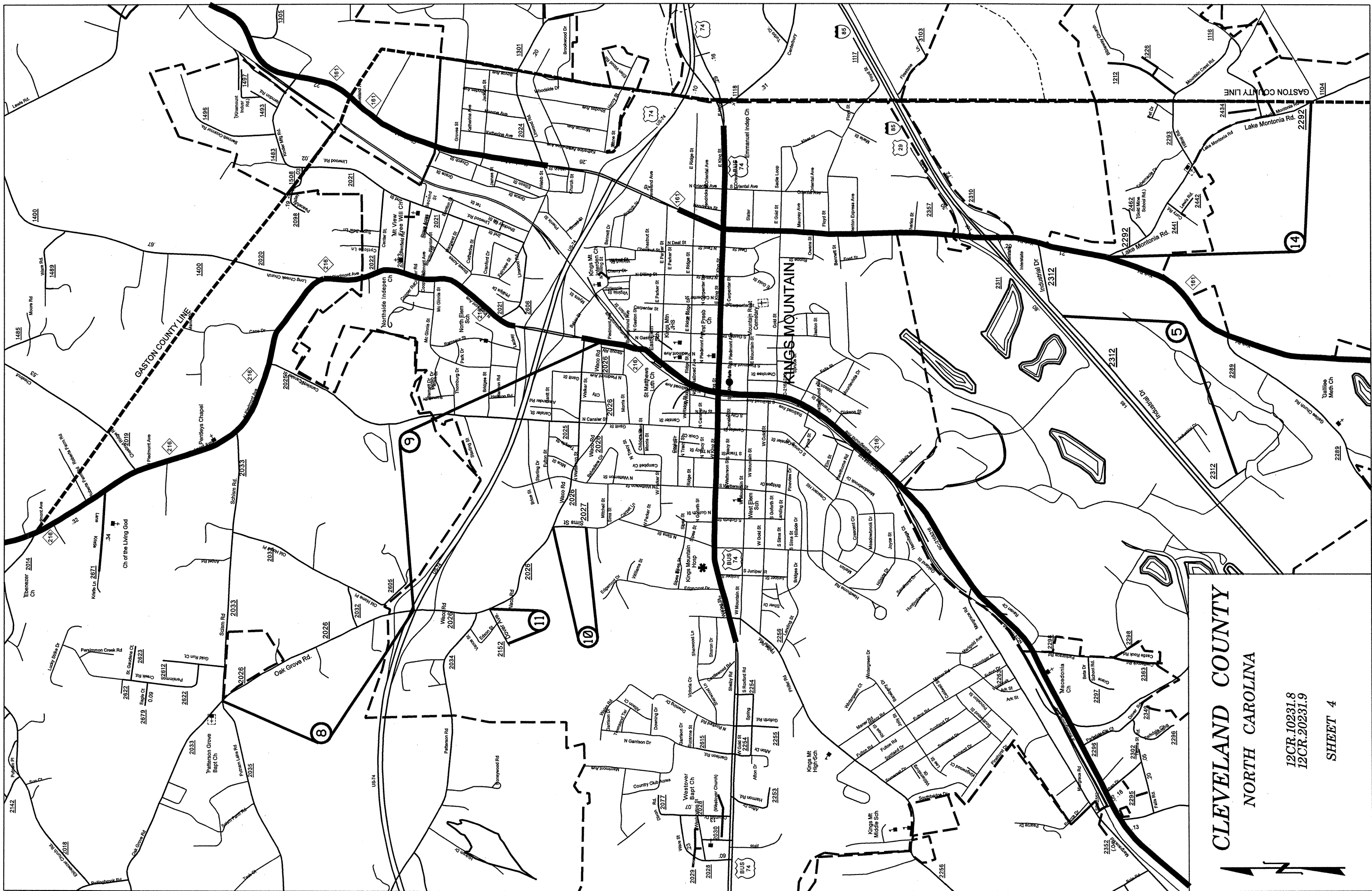
CLEVELAND COUNTY
NORTH CAROLINA

12CR.10231.8
12CR.20231.9

SHEET 2

CLEVELAND COUNTY
NORTH CAROLINA
12CR.10231.8
12CR.20231.9
12CR.20231.9
SHEET 3

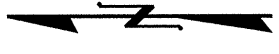


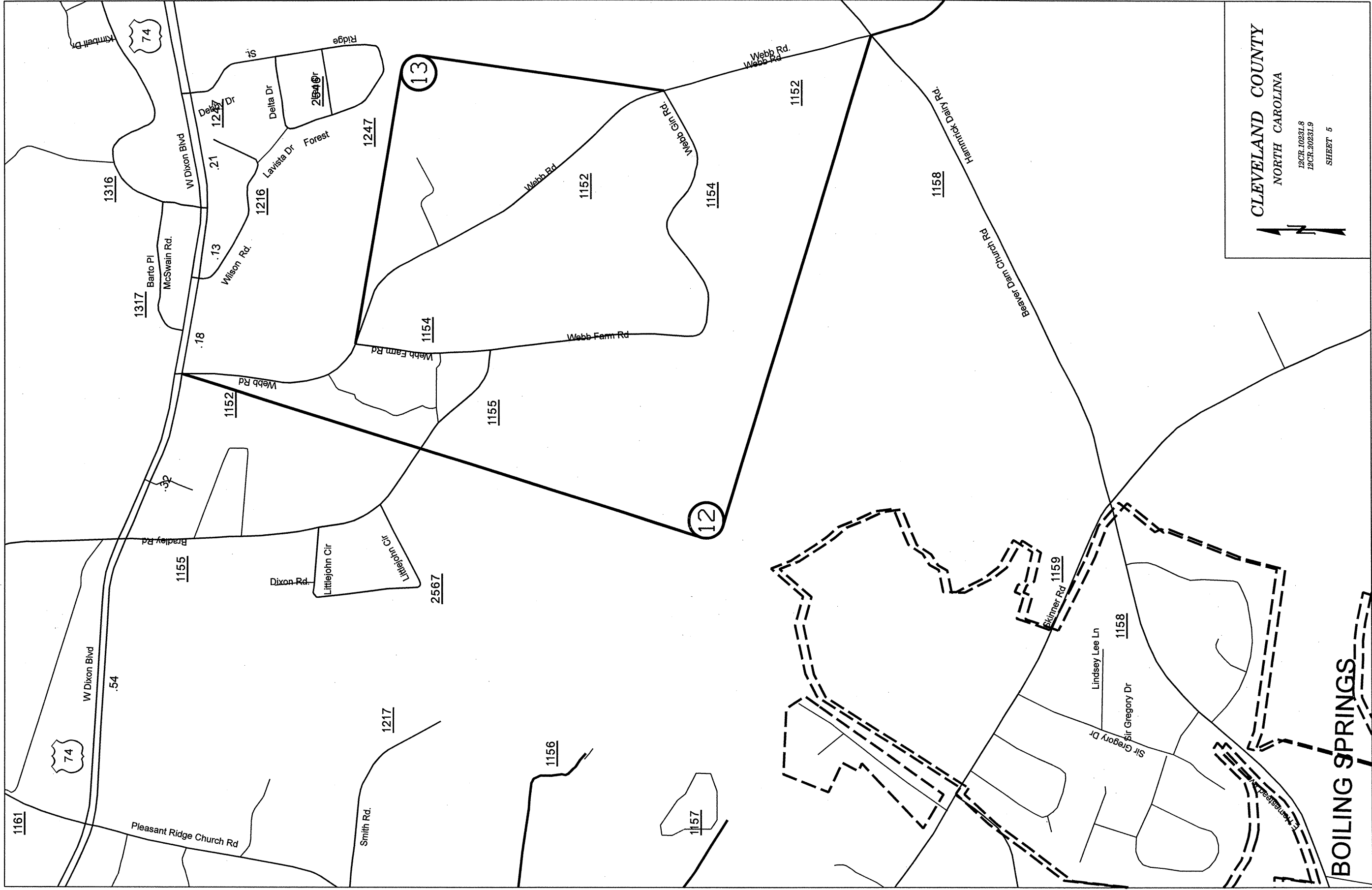


CLEVELAND COUNTY
NORTH CAROLINA

12CR.10231.8
 12CR.20231.9

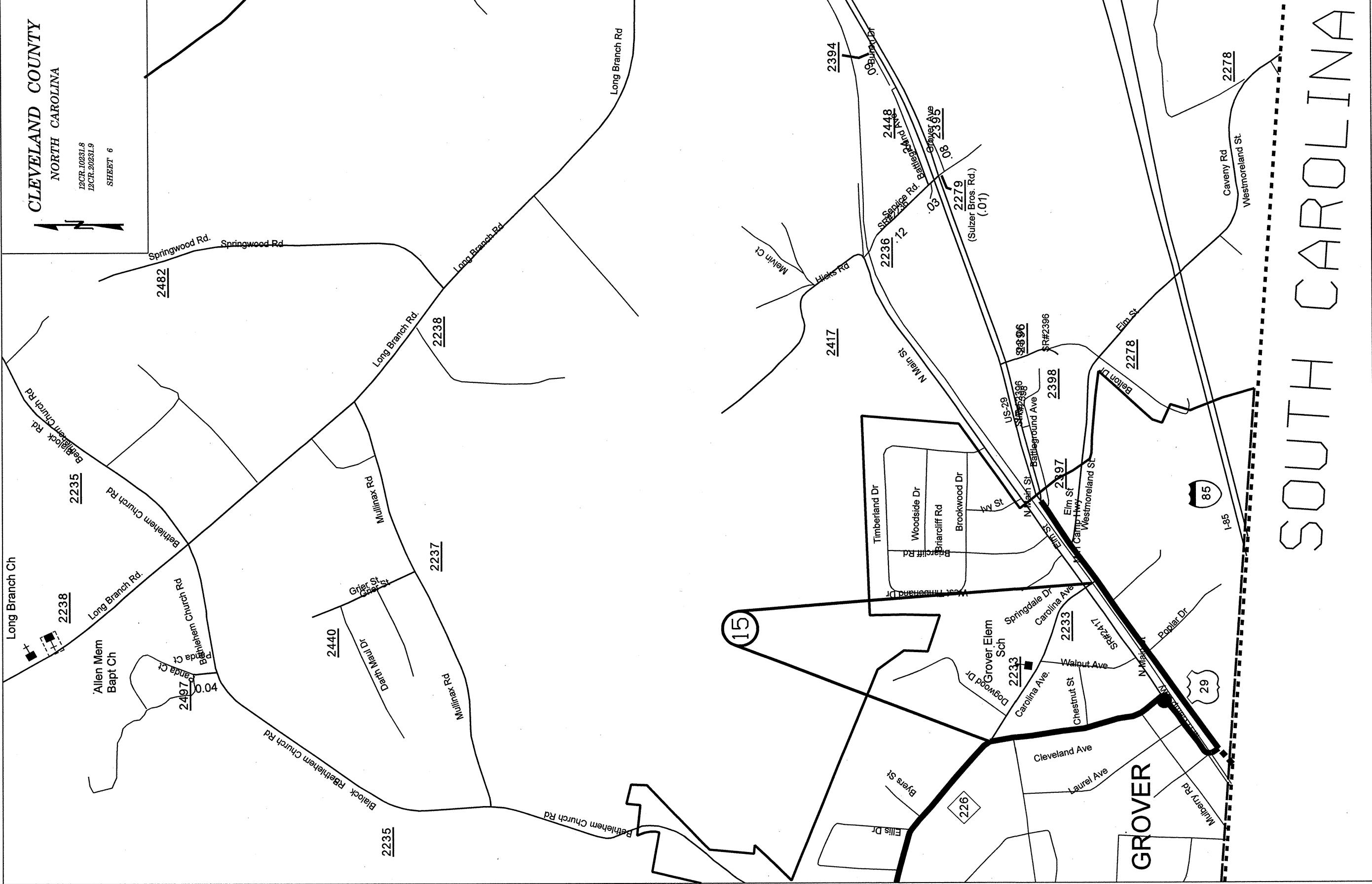
SHEET 4





CLEVELAND COUNTY
NORTH CAROLINA

12CR.10231.8
12CR.20231.9
SHEET 6

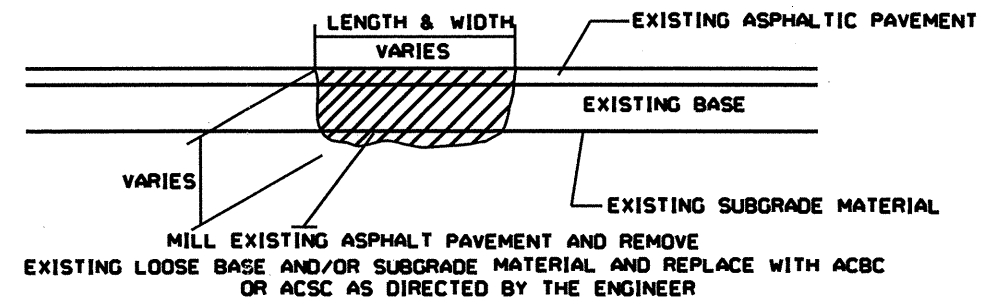


SOUTH CAROLINA

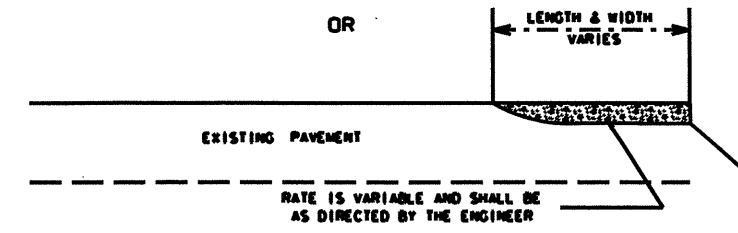
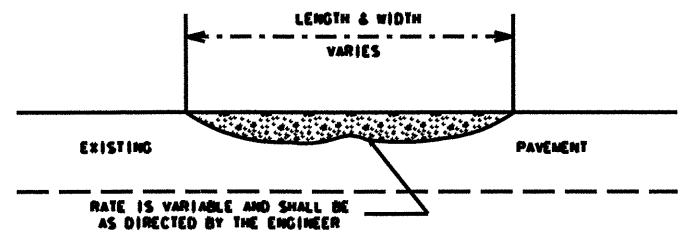
PROJ. REFERENCE NO. CLEVELAND COUNTY 2010	SHEET NO. 8	TOTAL SHEETS
STATE PROJ. NO. 12CR.10231.8 12CR.20231.9	F.A. PROJ. NO.	DESCRIPTION

PAVEMENT SCHEDULE	
A	SHOULDER RECONSTRUCTION
B	PROP. APPROX. 1½" ASPHALT CONCRETE SURFACE COURSE, TYPE S9.5B, AT AN AVERAGE RATE OF 168 LBS. PER SQ. YD.
C	PROP. APPROX. 5.5" ASPHALT CONCRETE BASE COURSE, TYPE B25.0B, AT AN AVERAGE RATE OF 627 LBS. PER SQ. YD.
D	MILL ASPHALT PAVEMENT APPROX. 1½"
E	MILL ASPHALT PAVEMENT APPROX. 3" AS DIRECTED BY ENGINEER

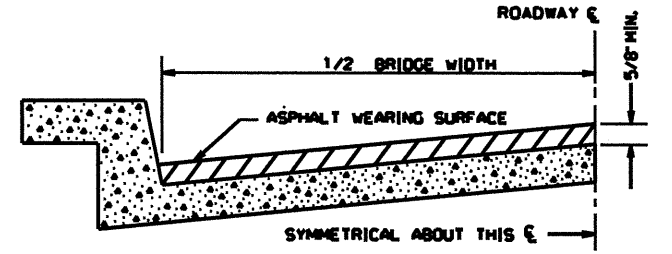
NOTE: PAVEMENT EDGE SLOPES ARE 1:1 UNLESS SHOWN OTHERWISE.
MILL BRIDGE APPROACHES 100' TO PROVIDE A SMOOTH TRANSITION AS DIRECTED.
MILL INTO GUTTER LINE WHERE SHOWN AND AS DIRECTED.



PATCHING EXISTING PAVEMENT

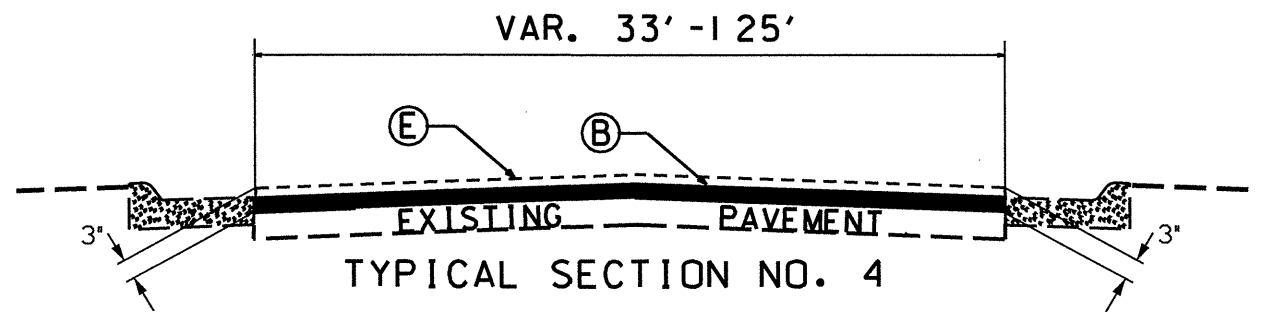
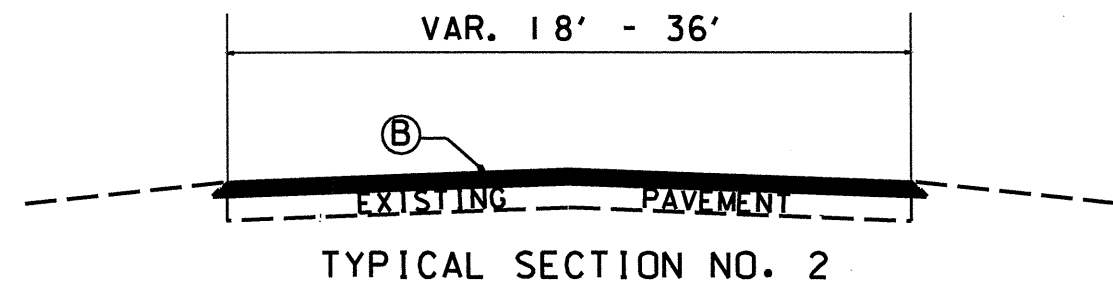
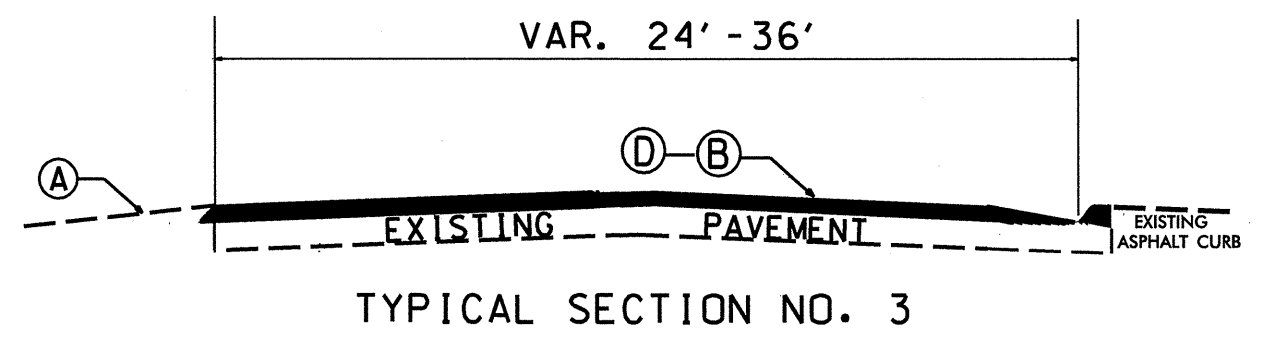
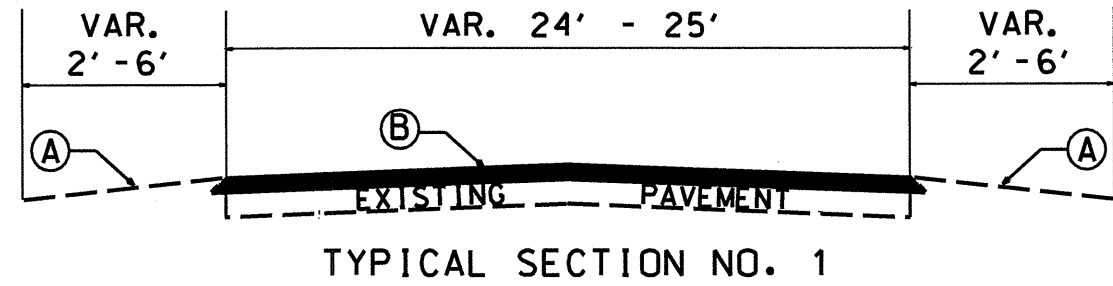


**ASPHALT CONCRETE SURFACE COURSE
TYPE S9.5B. (LEVELING COURSE)**



BRIDGE HALF TYPICAL SECTION
FOR BRIDGES WITH FLOOR DRAINS, CARE SHALL BE EXERCISED IN PLACING THE WEARING SURFACE AROUND FLOOR DRAINS SO AS NOT TO HINDER EFFECTIVE DRAINAGE. ALL DRAINS SHALL BE LEFT OPEN.
THE PROPOSED WEARING SURFACE SHALL VARY IN THICKNESS AS NECESSARY TO PROVIDE A SMOOTH RIDING SURFACE. A THICKNESS OF NOT LESS THAN 5/8" SHALL BE PROVIDED. THE MAXIMUM THICKNESS SHALL PREFERABLY BE 1-1/2" UNLESS IT IS IMPRACTICAL TO PROVIDE A SMOOTH RIDING SURFACE OTHERWISE.

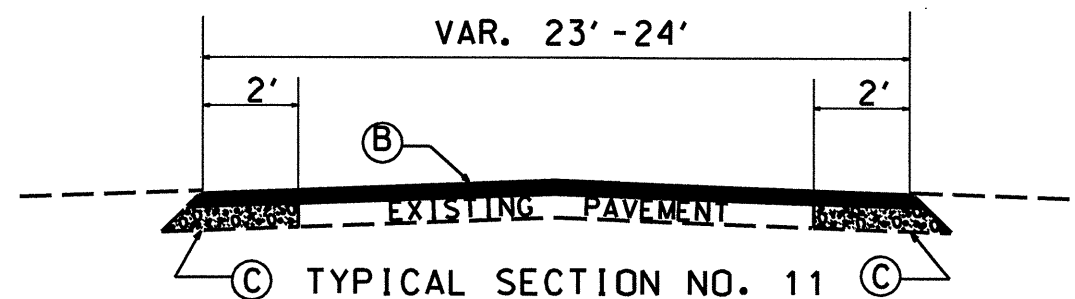
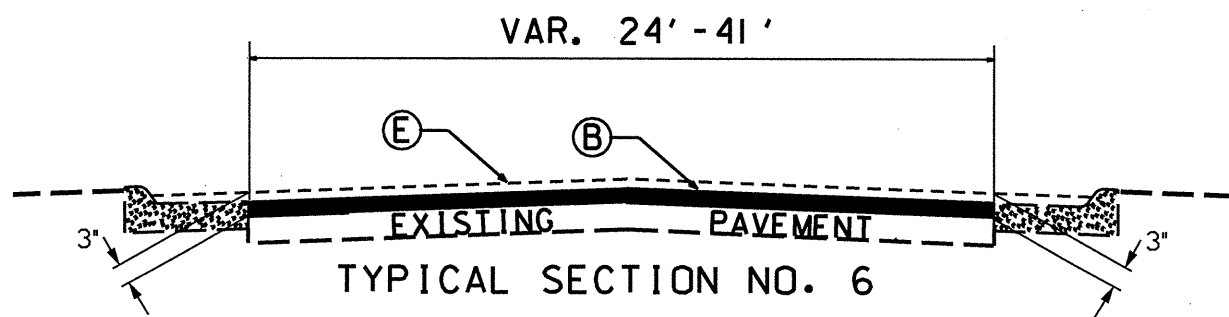
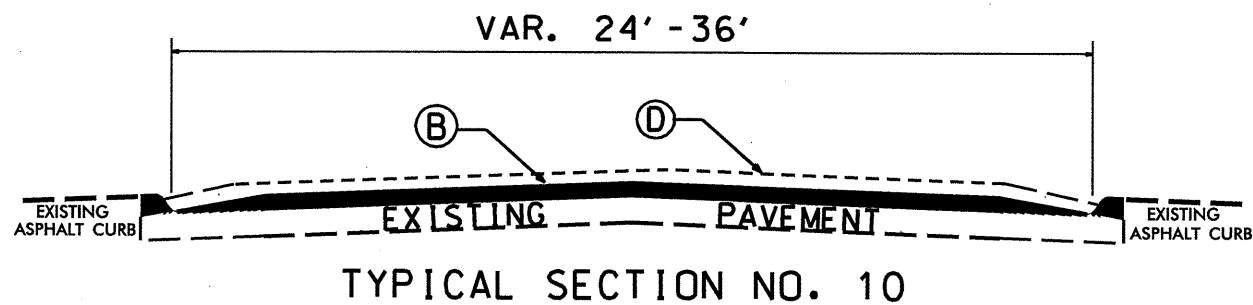
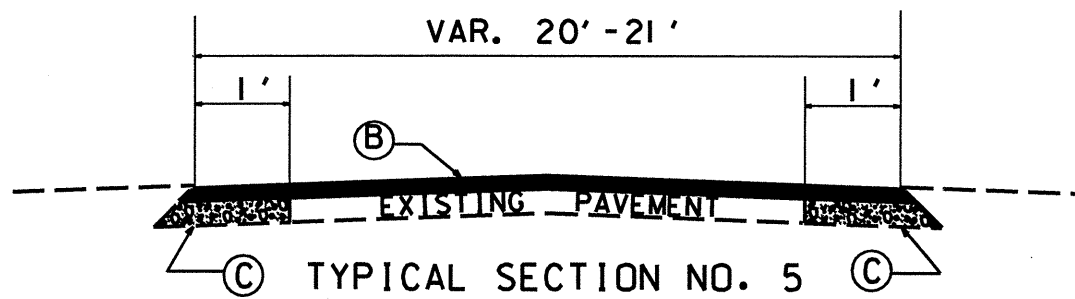
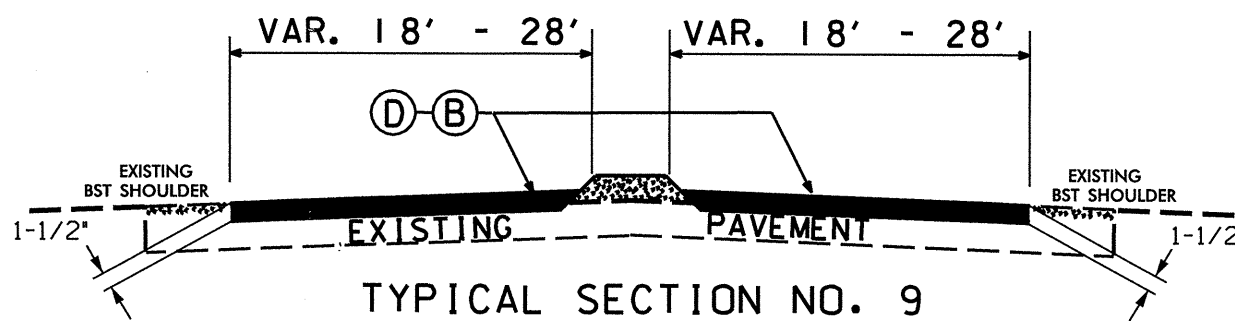
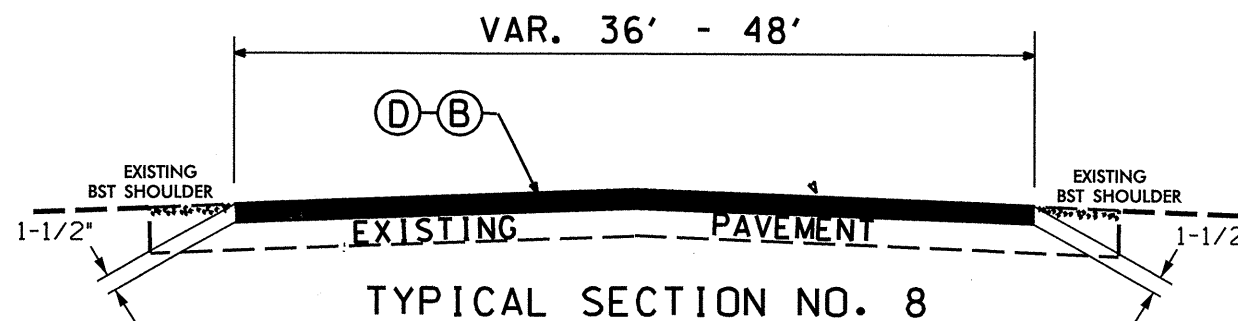
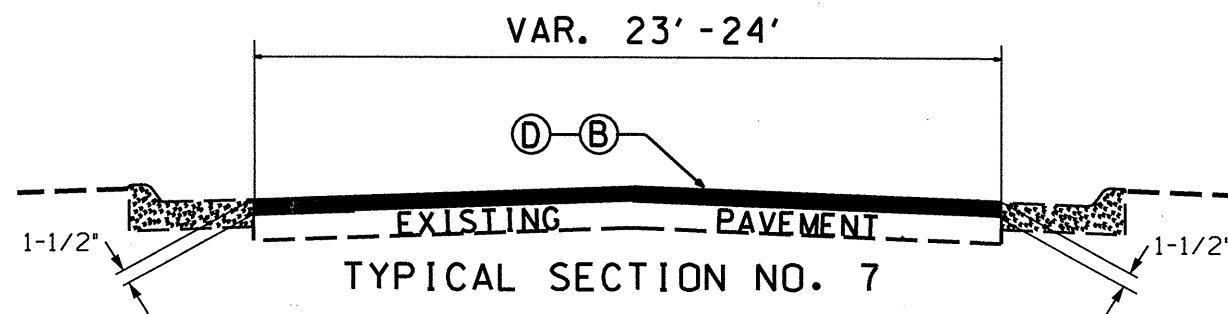
NOTES
ALL UNPAVED S.R. ROADS TO BE SURFACED 50' FROM EDGE OF PAVEMENT OF MAIN PROJECT.
ALL PAVED S.R. ROADS TO BE RESURFACED TO THE ENDS OF THE ROAD, OR AS DIRECTED BY THE ENGINEER.
EDGES, PAVEMENT WIDENING, INTERSECTIONS AND BRIDGE FLARES ARE INCLUDED IN THE TABLE OF QUANTITIES.
SHOULDERS AND DITCHES ARE TO BE CONSTRUCTED BY OTHERS UNLESS OTHERWISE NOTED.
BRIDGES TO BE RESURFACED AT LOCATIONS AND TO DEPTH AS DIRECTED BY THE ENGINEER.



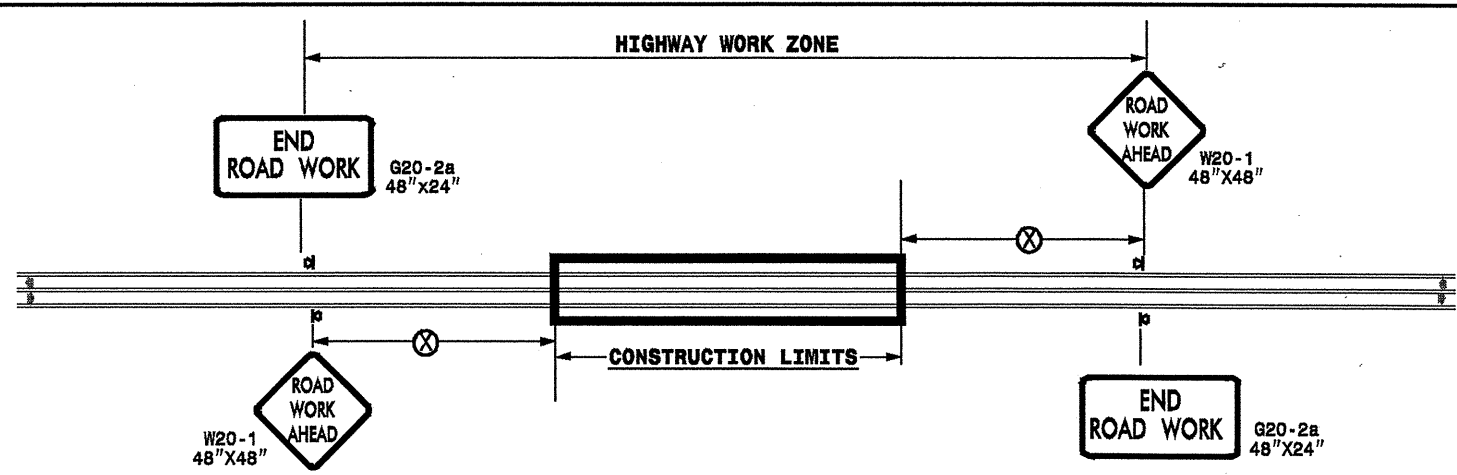
PROJ. REFERENCE NO.	SHEET NO.	TOTAL SHEETS
CLEVELAND COUNTY 2010	9	
STATE PROJ. NO.	F. A. PROJ. NO.	DESCRIPTION
12CR.10231.8		
12CR.20231.9		

PAVEMENT SCHEDULE	
A	SHOULDER RECONSTRUCTION
B	PROP. APPROX. 1½" ASPHALT CONCRETE SURFACE COURSE, TYPE S9.5B, AT AN AVERAGE RATE OF 168 LBS. PER SQ. YD.
C	PROP. APPROX. 5.5" ASPHALT CONCRETE BASE COURSE, TYPE B25.0B, AT AN AVERAGE RATE OF 627 LBS. PER SQ. YD.
D	MILL ASPHALT PAVEMENT APPROX. 1½"
E	MILL ASPHALT PAVEMENT APPROX. 3" AS DIRECTED BY ENGINEER

NOTE: PAVEMENT EDGE SLOPES ARE 1:1 UNLESS SHOWN OTHERWISE.
MILL BRIDGE APPROACHES 100' TO PROVIDE A SMOOTH TRANSITION AS DIRECTED.
MILL INTO GUTTER LINE WHERE SHOWN AND AS DIRECTED.



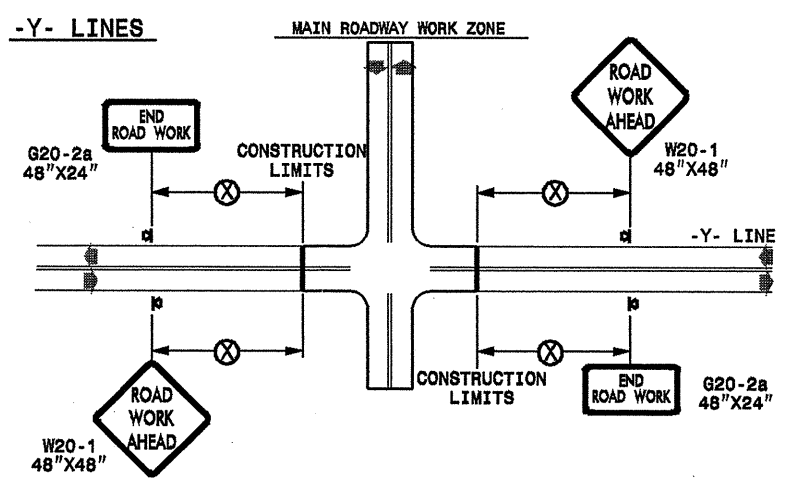
TWO-WAY UNDIVIDED ** (L-LINES)



POSTED SPEED LIMIT (M.P.H.)	RECOMMENDED MINIMUM SIGN SPACING
≤ 50	500'
≥ 55	1000'

STATE OF NORTH CAROLINA
DEPT. OF TRANSPORTATION
DIVISION OF HIGHWAYS
RALEIGH, N.C.

ROADWAYS INTERSECTING ALONG 2 WAY UNDIVIDED WORK ZONE (Y-LINES)



**DETAIL DRAWING
FOR TWO-WAY UNDIVIDED
WORK ZONE WARNING SIGNS**

GENERAL NOTES

- USE FLUORESCENT ORANGE SHEETING (TYPE VII OR HIGHER) ON ALL ADVANCE WORK ZONE SIGNS.
- DO NOT INSTALL ADVANCE WARNING SIGNS MORE THAN 3 DAYS PRIOR TO BEGINNING OF WORK.
- ALL SIGN SPACING DIMENSIONS ARE APPROXIMATE, FIELD ADJUST AS NECESSARY OR AS DIRECTED.
- USE PORTABLE WORK ZONE SIGNS ONLY WITH PORTABLE WORK ZONE SIGN STANDS SPECIFICALLY DESIGNED FOR ONE ANOTHER. PORTABLE WORK ZONE SIGNS MAY BE ROLL UP OR APPROVED COMPOSITE.
- PROVIDE PORTABLE WORK ZONE SIGN STANDS, PORTABLE SIGNS AND SIGN SHEETING WHICH ARE LISTED ON THE NORTH CAROLINA DEPARTMENT OF TRANSPORTATION'S APPROVED PRODUCT LIST OR ACCEPTED AS TRAFFIC QUALIFIED BY THE TRAFFIC CONTROL UNIT.
- ** TWO-WAY UNDIVIDED ADVANCE WARNING SIGN CONFIGURATION MAY BE USED ON URBAN MULTI-LANE FACILITIES WHERE CONDITIONS LIMIT THE USE OF DUAL MOUNTED SIGNS AS DETERMINED BY THE ENGINEER.

LEGEND

◀ PORTABLE SIGN

➔ DIRECTION OF TRAFFIC FLOW

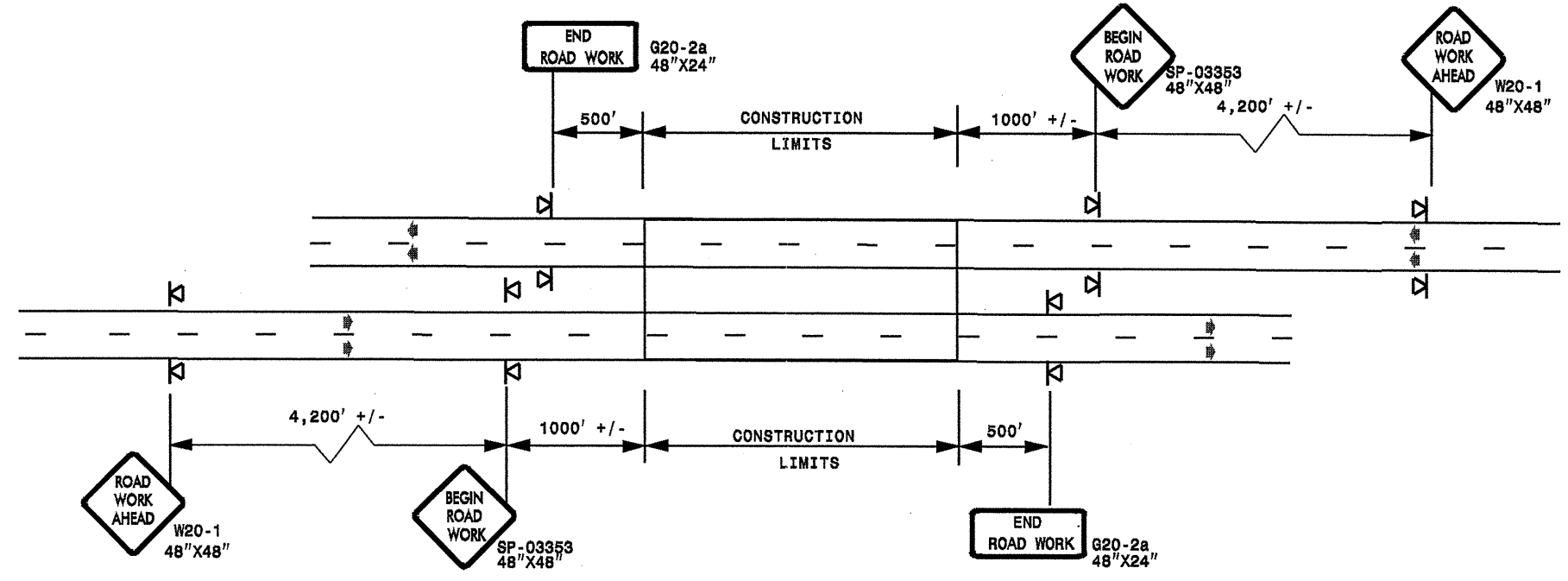
SHEET 1 OF 1

APPROVED: _____	DATE: _____	DETAIL DRAWING FOR TWO-WAY UNDIVIDED ADVANCED WORK ZONE WARNING SIGNS	SCALE: NONE DATE: _____ DWG. BY: _____ DESIGN BY: _____ REVIEWED BY: _____		REVISIONS 7-98 10/01 10-98 03/04 01/01 11/04
SEAL					CADD FILE

21-OCT-2009 11:20
 s:\signing\resur\resurfacing\030509\resurfacing\030509.dwg
 AT WZ1237502

ADVANCE WORK ZONE WARNING SIGNING FOR FREEWAYS (4 LANES OR GREATER)

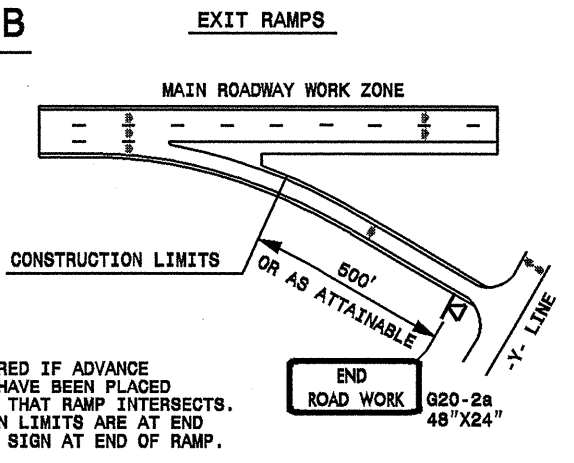
DETAIL A



STATE OF NORTH CAROLINA
 DEPT. OF TRANSPORTATION
 DIVISION OF HIGHWAYS
 RALEIGH, N.C.

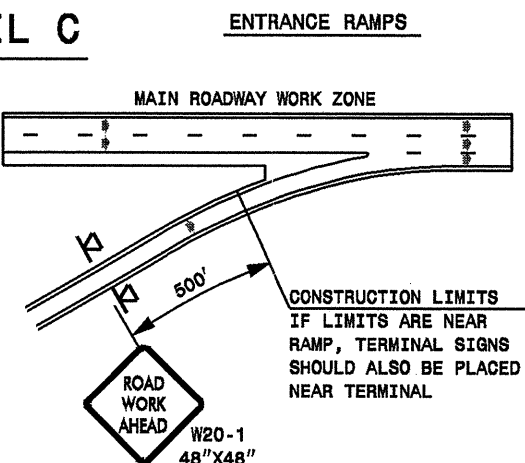
ROADWAYS INTERSECTING ALONG FREEWAY WORK ZONE (Y-LINES)

DETAIL B



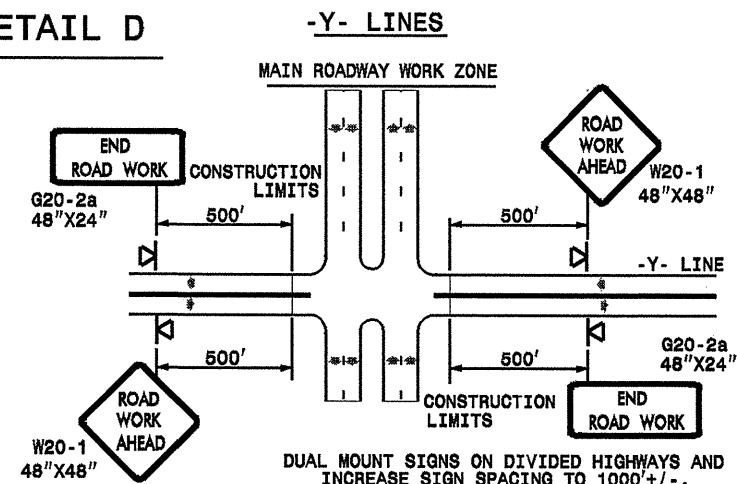
NOTE:
 SIGN NOT REQUIRED IF ADVANCE WARNING SIGNS HAVE BEEN PLACED ALONG -Y- LINE THAT RAMP INTERSECTS. IF CONSTRUCTION LIMITS ARE AT END OF RAMP, PLACE SIGN AT END OF RAMP.

DETAIL C



CONSTRUCTION LIMITS IF LIMITS ARE NEAR RAMP, TERMINAL SIGNS SHOULD ALSO BE PLACED NEAR TERMINAL

DETAIL D



DETAIL DRAWING FOR FREEWAYS WORK ZONE WARNING SIGNS (SHORT-DURATION LANE CLOSURES)

GENERAL NOTES

- USE FLUORESCENT ORANGE SHEETING (TYPE VII OR HIGHER) ON ALL ADVANCE WORK ZONE SIGNS.
- DO NOT INSTALL ADVANCE WARNING SIGNS MORE THAN 3 DAYS PRIOR TO BEGINNING OF WORK.
- ALL SIGN SPACING DIMENSIONS ARE APPROXIMATE, FIELD ADJUST AS NECESSARY OR AS DIRECTED.
- USE PORTABLE WORK ZONE SIGNS ONLY WITH PORTABLE WORK ZONE SIGN STANDS SPECIFICALLY DESIGNED FOR ONE ANOTHER. PORTABLE WORK ZONE SIGNS MAY BE ROLL UP OR APPROVED COMPOSITE.
- PROVIDE PORTABLE WORK ZONE SIGN STANDS, PORTABLE SIGNS AND SIGN SHEETING WHICH ARE LISTED ON THE NORTH CAROLINA DEPARTMENT OF TRANSPORTATION'S APPROVED PRODUCT LIST OR ACCEPTED AS TRAFFIC QUALIFIED BY THE TRAFFIC CONTROL UNIT.
- ** TWO-WAY UNDIVIDED ADVANCE WARNING SIGN CONFIGURATION MAY BE USED ON MULTI-LANE FACILITIES WHERE CONDITIONS LIMIT THE USE OF DUAL MOUNTED SIGNS AS DETERMINED BY THE ENGINEER.

LEGEND

▣ PORTABLE SIGN

➔ DIRECTION OF TRAFFIC FLOW

SHEET 1 OF 1

APPROVED: _____	DATE: _____	DETAIL DRAWING FOR FREEWAYS WORK ZONE WARNING SIGNS	
SEAL			
SCALE: NONE	REVISIONS		
DATE:	7-98 10/01		
DWG. BY:	10-98 03/04		
DESIGN BY:	01/01 11/04		
REVIEWED BY:			

21-OCT-2009 17:22 s:\signing\resurfacing\div12\c202490a-b\12cr102318x2.cleveland.nc18m16\c202490a-b_12cr102318x2_freewaylanesgreatJuly2006.por table.dgn
 psymore AT WZTC237502