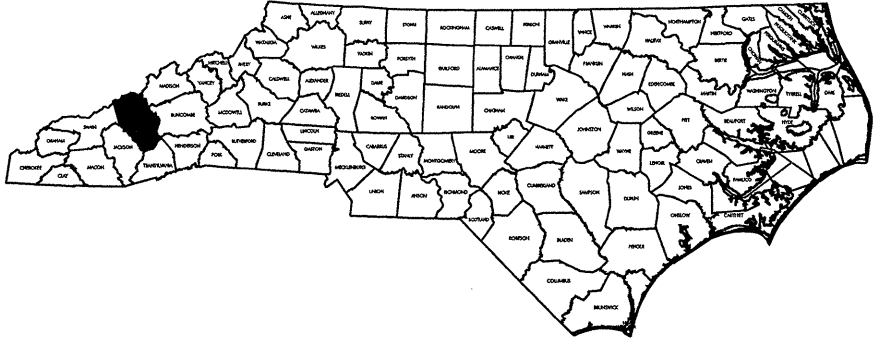


CONTRACT NO: DO 00007 TIP PROJECT: B-4700S

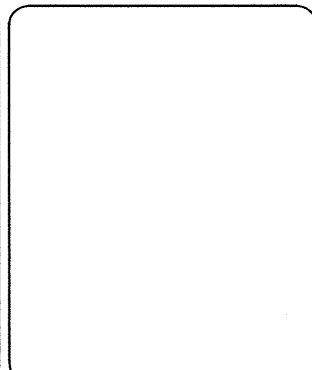
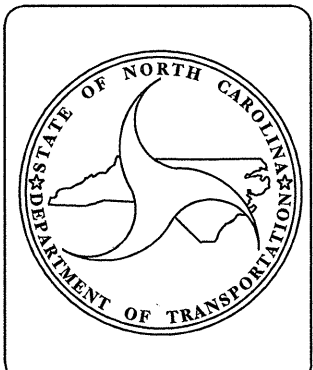
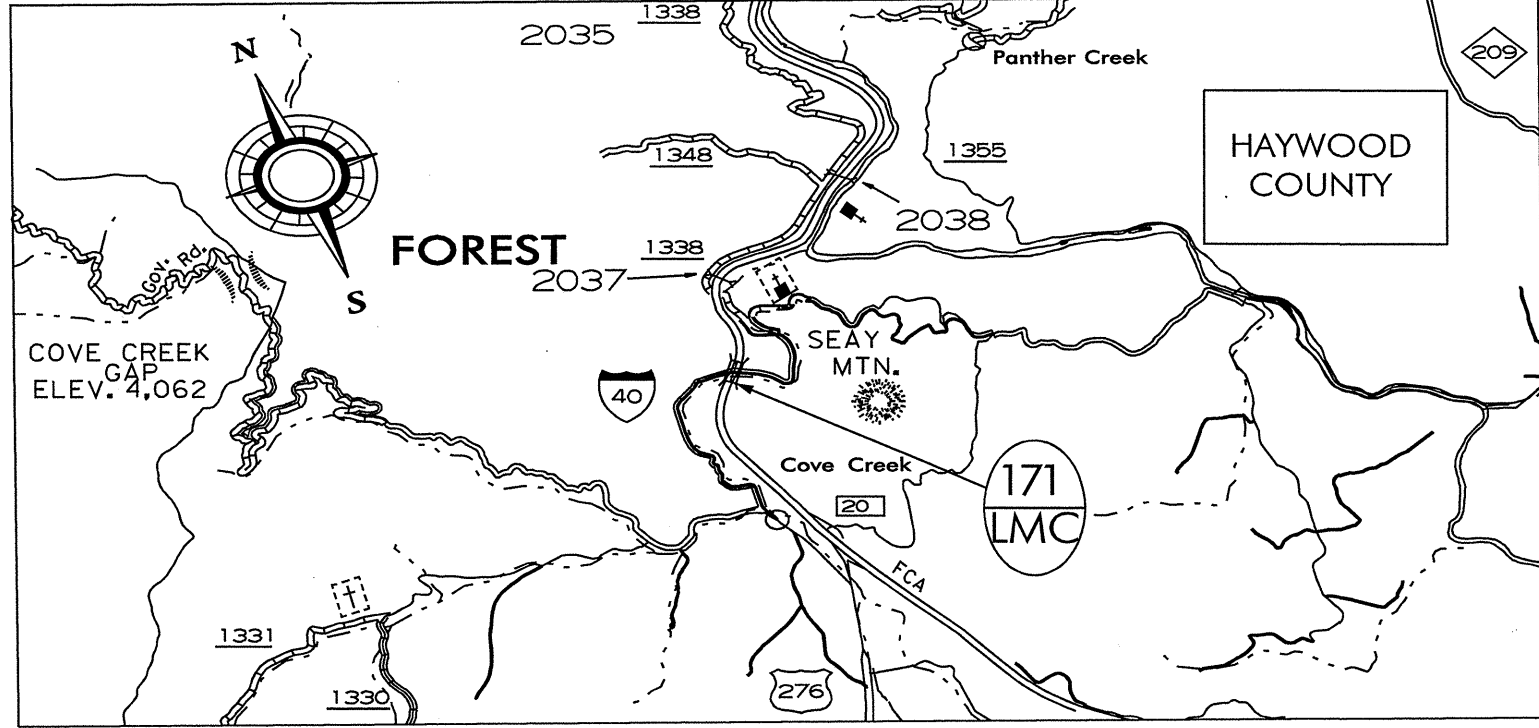


STATE OF NORTH CAROLINA
DIVISION OF HIGHWAYS


HAYWOOD COUNTY

LOCATION: I-40, OVER SR 1338 AT
JONATHAN CREEK
TYPE OF WORK: BRIDGE DECK
PRESERVATION - LATEX MODIFIED CONCRETE OVERLAY.

| STATE | STATE PROJECT REFERENCE NO. | SHEET NO. | TOTAL SHEETS |
|-------------------|-----------------------------|-------------|--------------|
| N.C. | B-4700S | 1 | |
| STATE PROJECT NO. | F.A. PROJ. NO. | DESCRIPTION | |
| 36727.1.1 | BRNHS-000S(504) | PE | |
| 36727.3.18 | BRNHS-000S(370) | CONSTR | |
| | | | |
| | | | |
| | | | |
| | | | |



KEY:

 LATEX MODIFIED CONCRETE OVERLAY.

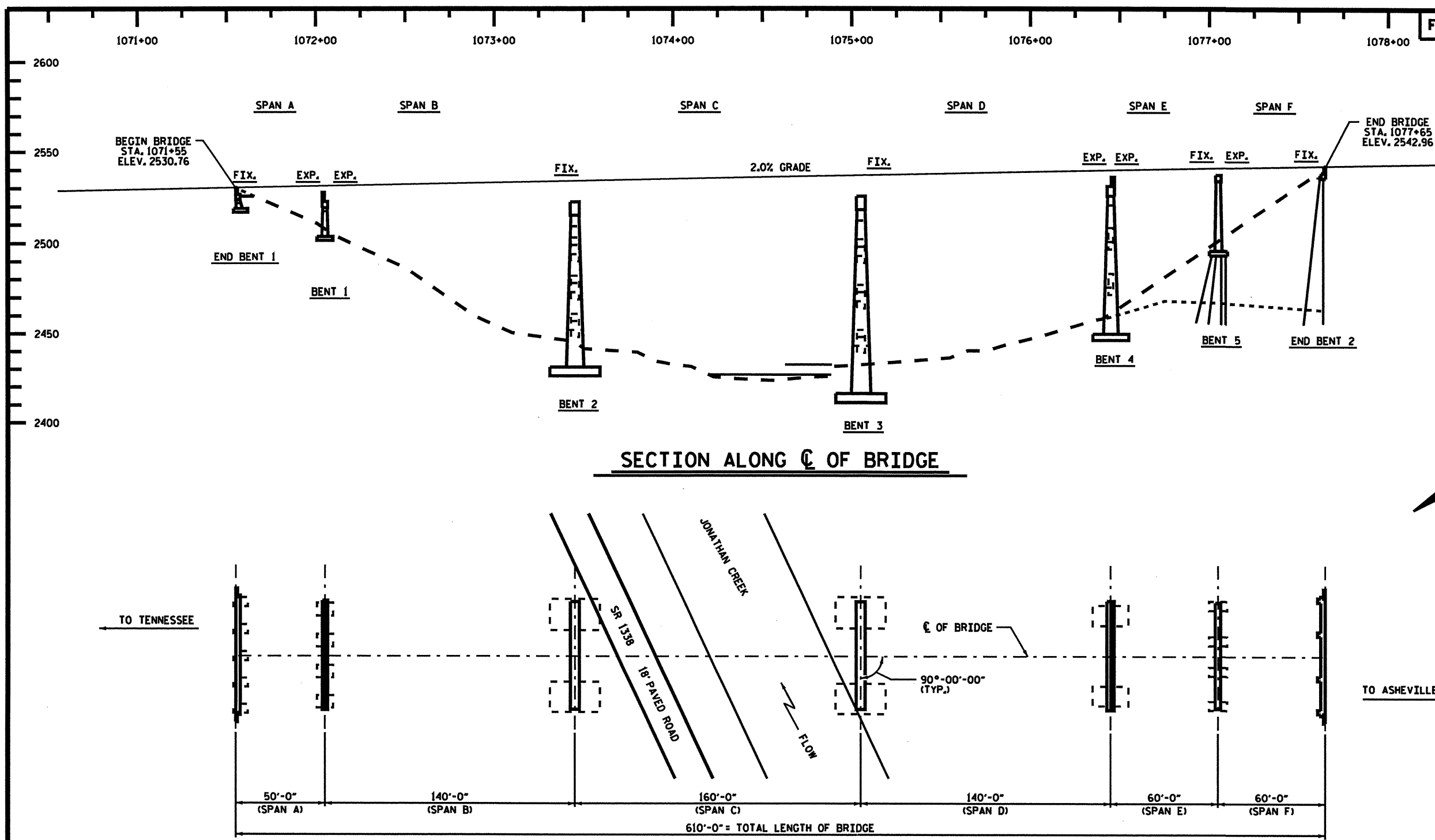
Prepared in the Office of:
BRIDGE MANAGEMENT UNIT
NORTH CAROLINA DEPARTMENT OF TRANSPORTATION
2006 STANDARD SPECIFICATIONS

LETTING DATE:
NOVEMBER 30, 2009

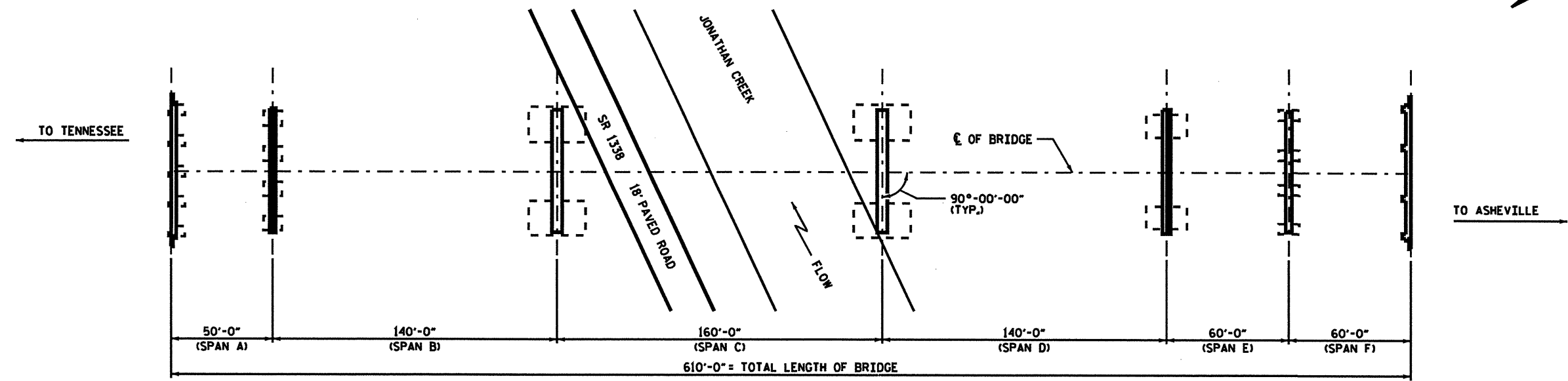
DAN HOLDERMAN, PE
STATE BRIDGE
MANAGEMENT ENGINEER

MIKE SUMMERS
BRIDGE MANAGEMENT
PROJECT MANAGER

RICK NELSON, PE
DESIGN ENGINEER



SECTION ALONG C OF BRIDGE



PLAN

PROJECT NO. B-4700S
HAYWOOD COUNTY
 STATION: 1074+60 -L-

REHABILITATION OF BRIDGE NO. 171

| TOTAL BILL OF MATERIAL | | | | | | | | | | | |
|------------------------|------------------------------|-------------------------------|--------------------------------|---------------------------------|--------------------|---------------------------------|---|---------------------|------------------------|------------------------------|--------------------------------------|
| SCARIFYING BRIDGE DECK | CLASS I* SURFACE PREPARATION | CLASS II* SURFACE PREPARATION | CLASS III* SURFACE PREPARATION | HYDRO-DEMOLITION OF BRIDGE DECK | CLASS AA* CONCRETE | LATEX MODIFIED CONCRETE OVERLAY | PLACING AND FINISHING LATEX MODIFIED CONCRETE | EVAZOTE JOINT SEALS | GROOVING BRIDGE FLOORS | PAVEMENT MARKINGS (POLYUREA) | ASPHALT CONCRETE SURFACE COURSE TYPE |
| SO. YDS. | SO. YDS. | SO. YDS. | SO. YDS. | SO. YDS. | CU. YDS. | CU. YDS. | SO. YDS. | LUMP SUM | SO. FT. | LIN. FEET | TONS |
| 4425** | 930 | 2100 | 770 | 3800 | 150 | 370 | 3800 | LUMP SUM | 30480 | 2750 | 52 |

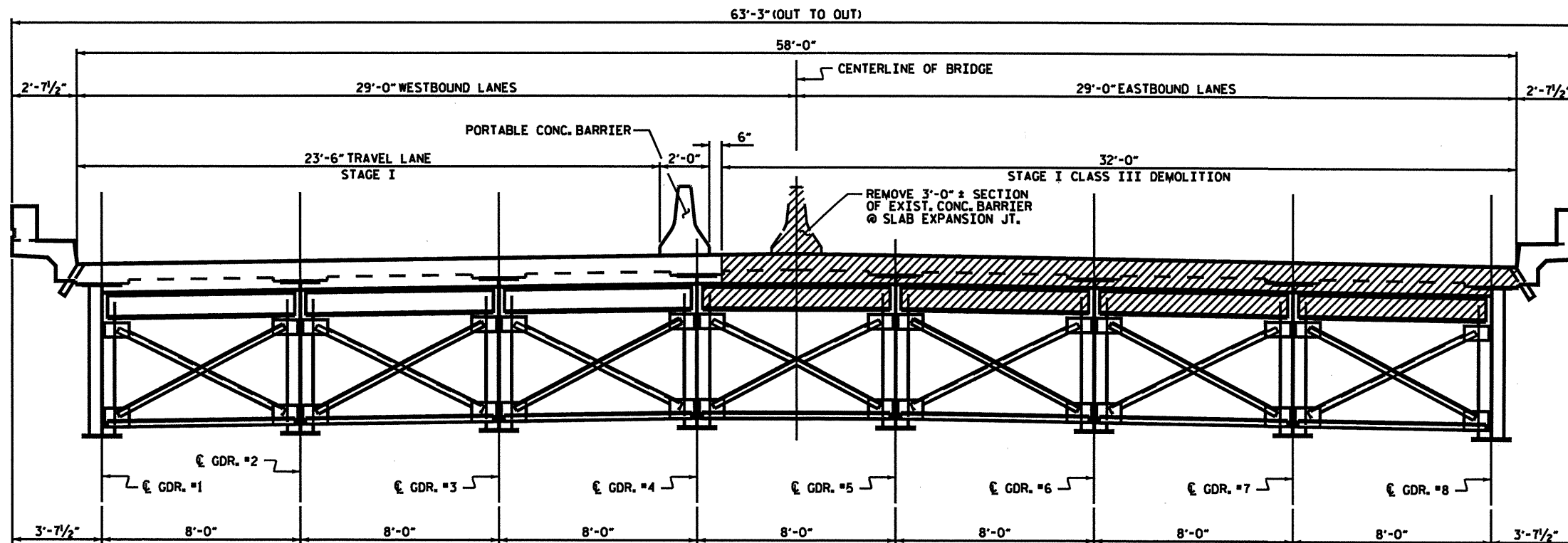
● QUANTITIES ARE SHOWN FOR INFORMATIONAL PURPOSES ONLY.
 ●● INCLUDES APPROACH ROADWAY MILLING.

DRAWN BY: M.A. ALLEN DATE: 10-09
 CHECKED BY: B.C. HANKS DATE: 10-09

STATE OF NORTH CAROLINA
 DEPARTMENT OF TRANSPORTATION
 RALEIGH

GENERAL DRAWING
BRIDGE ON I-40 OVER
S.R. 1338 AND
JONATHAN CREEK

| REVISIONS | | | | | | SHEET NO. |
|-----------|----|------|-----|----|------|----------------|
| NO. | BY | DATE | NO. | BY | DATE | |
| 1 | | | 3 | | | 5-1 |
| 2 | | | 4 | | | TOTAL SHEETS 9 |



DIAPHRAGMS AT SLAB EXPANSION JOINTS

TYPICAL SECTION - STAGE I

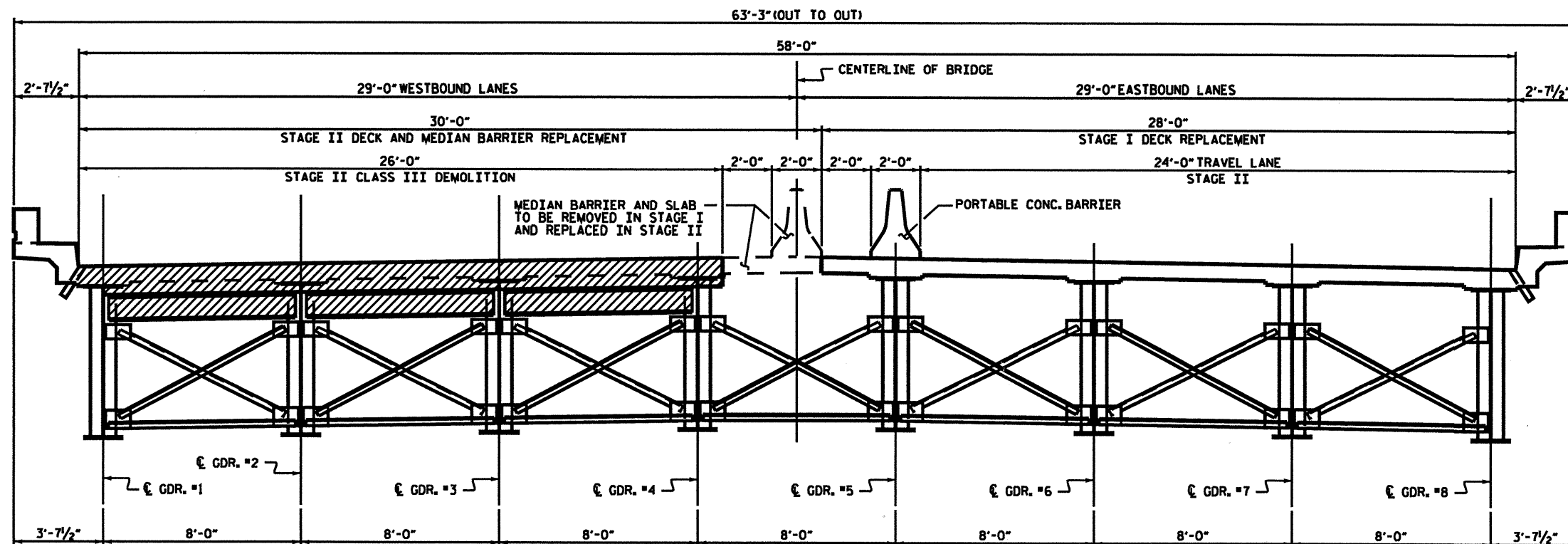
LOOKING EASTBOUND

NOTES:

THE COST OF LABOR, MATERIALS, TOOLS, EQUIPMENT AND INCIDENTALS NECESSARY TO REMOVE THE EXISTING CONCRETE DIAPHRAGMS, MEDIAN BARRIER AND CHANNELS SHALL BE INCLUDED IN THE BID PRICE FOR "HYDRO-DEMOLITION OF BRIDGE DECK".

MEDIAN BARRIER AND DECK REMOVAL AT THE SLAB EXPANSION JOINTS SHALL BE PERFORMED BY FIRST INTRODUCING A PARTIAL DEPTH SAWCUT (1/2" MAX DEPTH) FOLLOWED BY CONCRETE REMOVAL WITH A CHIPPING HAMMER IN THE RANGE OF 35 LBS. CARE SHALL BE TAKEN SO AS TO PREVENT DAMAGE TO EXISTING DECK REINFORCING STEEL AND EXISTING GIRDERS.

INASMUCH AS THE PAINT SYSTEM ON THE EXISTING STRUCTURAL STEEL CONTAINS LEAD, THE CONTRACTOR'S ATTENTION IS DIRECTED TO ARTICLE 107-1 OF THE STANDARD SPECIFICATIONS. ANY COSTS RESULTING FROM COMPLIANCE WITH APPLICABLE STATE OR FEDERAL REGULATIONS PERTAINING TO HANDLING OF MATERIALS CONTAINING LEAD BASED PAINT SHALL BE INCLUDED IN THE BID PRICE FOR "HYDRO-DEMOLITION OF BRIDGE DECK".



DIAPHRAGMS AT SLAB EXPANSION JOINTS

TYPICAL SECTION - STAGE II

LOOKING EASTBOUND

PROJECT NO. B-4700S
HAYWOOD COUNTY
 STATION: 1074+60 -L-

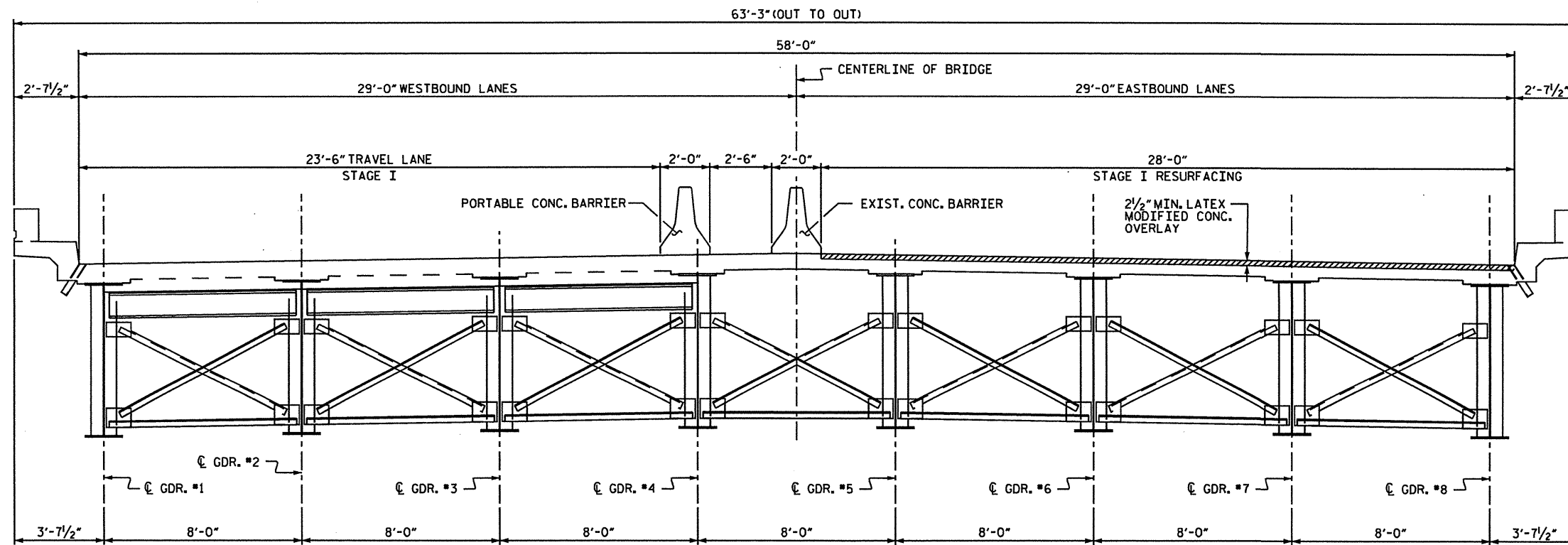
SHEET 1 OF 2

STATE OF NORTH CAROLINA
 DEPARTMENT OF TRANSPORTATION
 RALEIGH

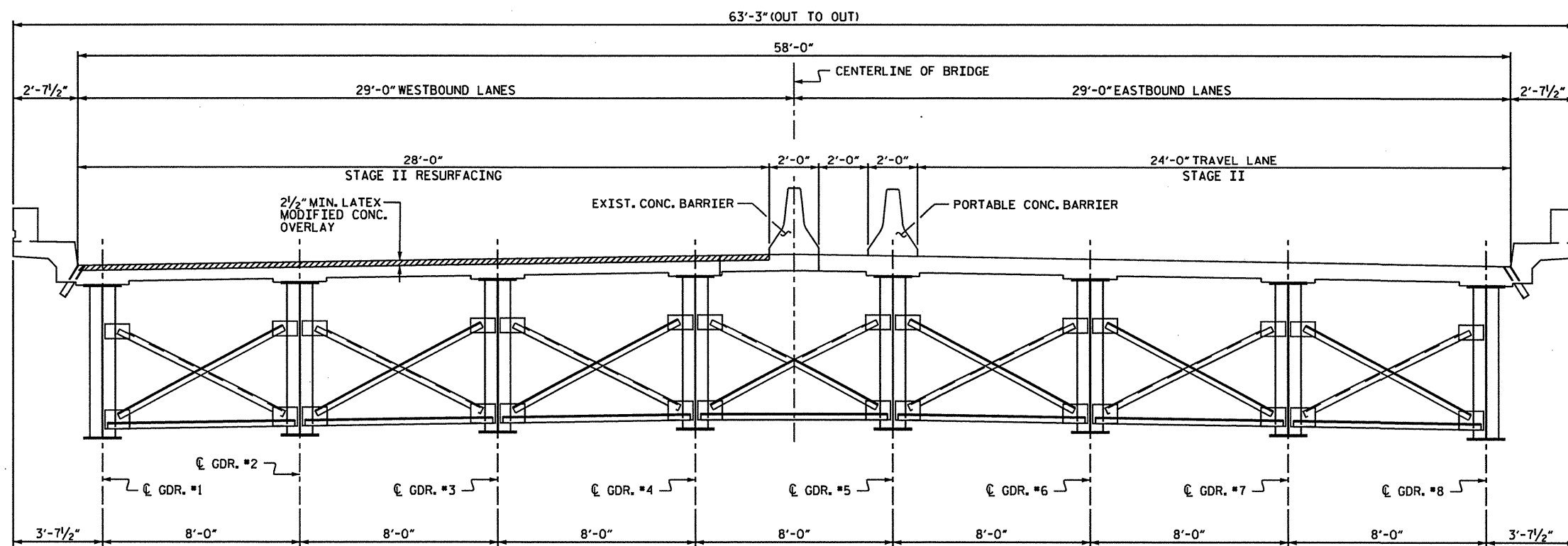
**TYPICAL SECTION
 JOINT REPLACEMENT**

| REVISIONS | | | | SHEET NO. | | | |
|-----------|----|------|-----|-----------|------|--------------|-----|
| NO. | BY | DATE | NO. | BY | DATE | TOTAL SHEETS | |
| 1 | | | 3 | | | 9 | S-2 |
| 2 | | | 4 | | | | |

DRAWN BY: M.A. ALLEN DATE: 10-09
 CHECKED BY: B.C. HANKS DATE: 10-09



DIAPHRAGMS AT SLAB EXPANSION JOINTS
 TYPICAL SECTION - STAGE I
 LOOKING EASTBOUND

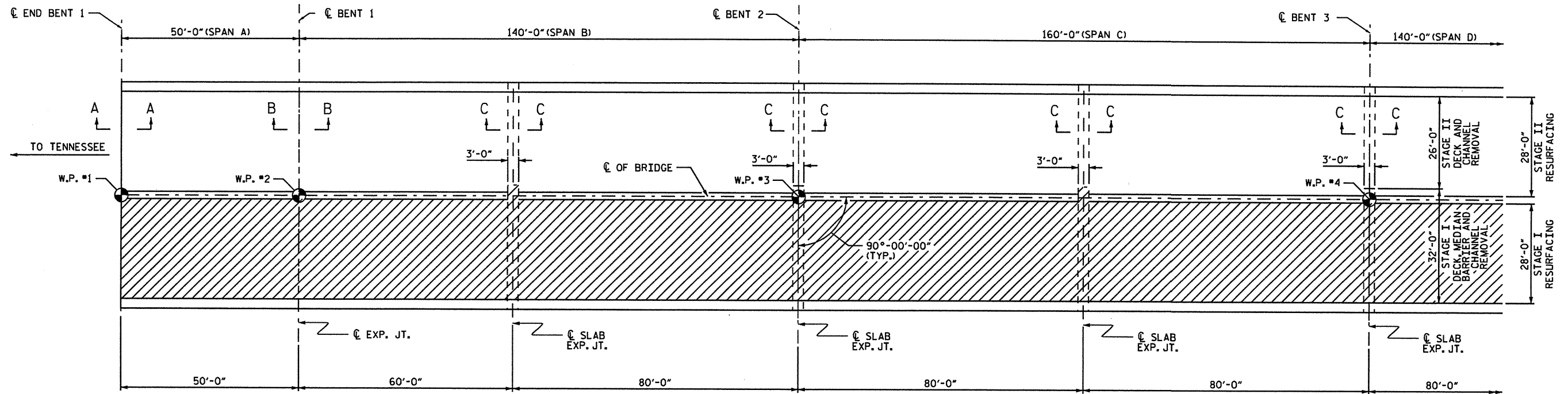


DIAPHRAGMS AT SLAB EXPANSION JOINTS
 TYPICAL SECTION - STAGE II
 LOOKING EASTBOUND

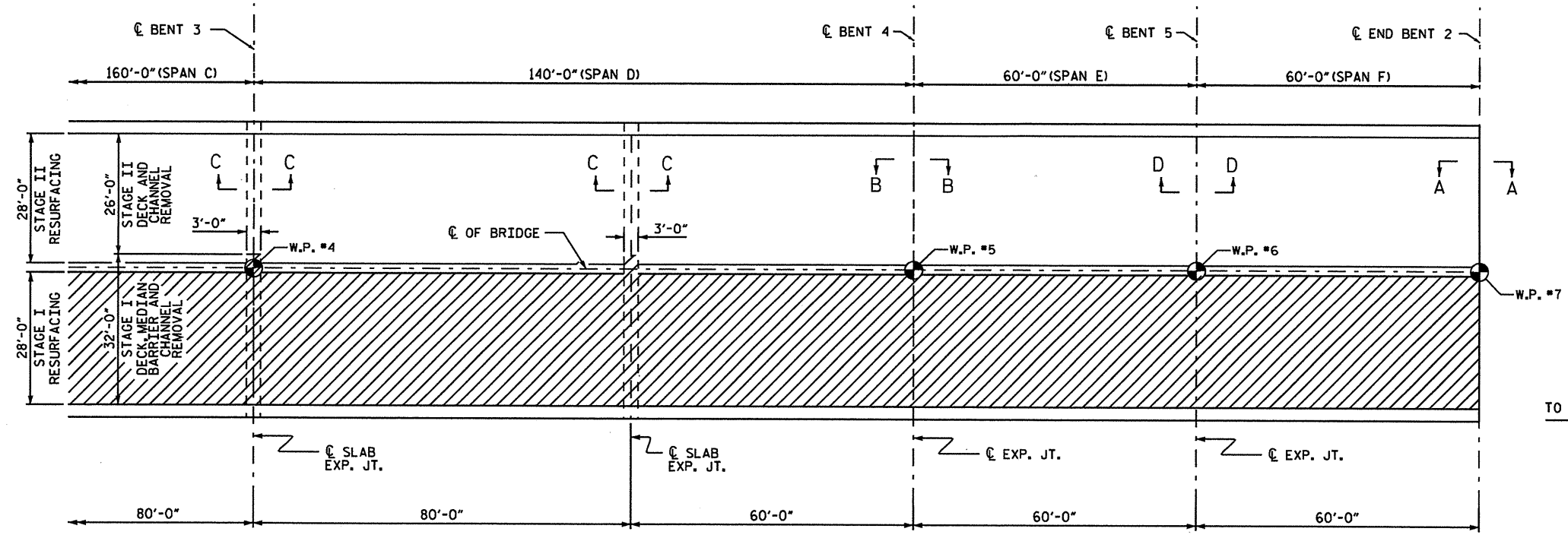
PROJECT NO. B-4700S
HAYWOOD COUNTY
 STATION: 1074+60 -L-
 SHEET 2 OF 2

| STATE OF NORTH CAROLINA DEPARTMENT OF TRANSPORTATION RALEIGH | | | | | | SHEET NO. S-3 |
|--|----|------|-----|----|------|-------------------|
| TYPICAL SECTION RESURFACING | | | | | | TOTAL SHEETS 9 |
| REVISIONS | | | | | | |
| NO. | BY | DATE | NO. | BY | DATE | |
| 1 | | | 3 | | | |
| 2 | | | 4 | | | |

DRAWN BY : M.A. ALLEN DATE : 10-09
 CHECKED BY : B.C. HANKS DATE : 10-09



PLAN OF SPANS



PLAN OF SPANS

NOTES:

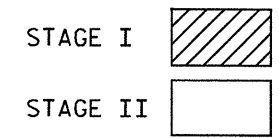
- FOR HYDRO-DEMOLITION OF BRIDGE DECK, SEE SPECIAL PROVISIONS.
- THE CONTRACTOR MUST COLLECT, TREAT AND DISPOSE OF RUN-OFF WATER FROM THE HYDRO-DEMOLITION PROCESS, SEE "HYDRO-DEMOLITION OF BRIDGE DECK" SPECIAL PROVISION.
- THE BOUNDARIES OF AREAS IDENTIFIED FOR CLASS III SURFACE PREPARATION ARE APPROXIMATE, THE CONTRACTOR SHALL PROVIDE A METHOD OF HANDLING UNEXPECTED BLOW THROUGH OF THE DECK, SEE "TYP. "BLOW THRU" CONTAINMENT AND FORMWORK" DETAIL.
- FOR ELASTOMERIC CONCRETE FOR JOINT REPAIR, SEE SPECIAL PROVISIONS.
- LATEX MODIFIED CONCRETE SHALL BE LATEX MODIFIED CONCRETE-VERY EARLY STRENGTH.
- FOR LATEX MODIFIED CONCRETE-VERY EARLY STRENGTH, SEE SPECIAL PROVISIONS.
- FOR GROOVING BRIDGE FLOORS INFORMATION, SEE "LATEX MODIFIED CONCRETE-VERY EARLY STRENGTH" SPECIAL PROVISION.
- FOR SUBMITTAL OF WORKING DRAWINGS, SEE SPECIAL PROVISIONS.
- FOR FALSEWORK AND FORMWORK, SEE SPECIAL PROVISIONS.

TO ASHEVILLE

PROJECT NO. B-4700S
HAYWOOD COUNTY
 STATION: 1074+60 -L-

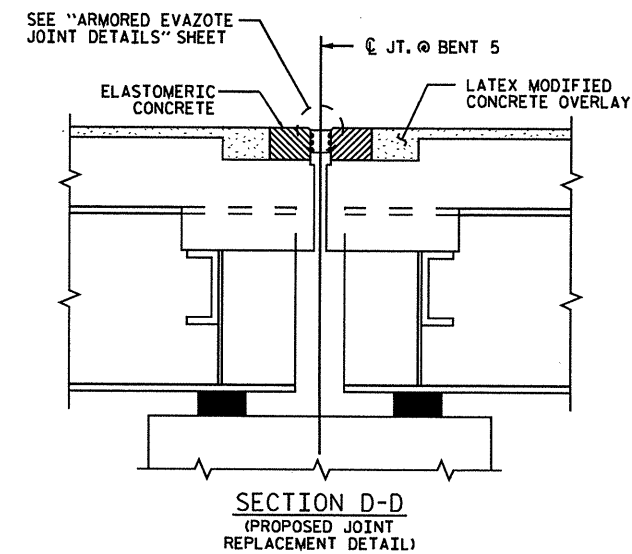
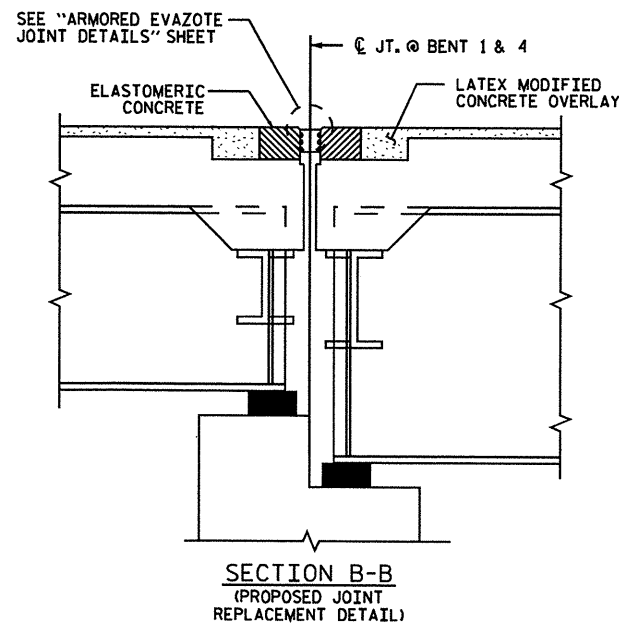
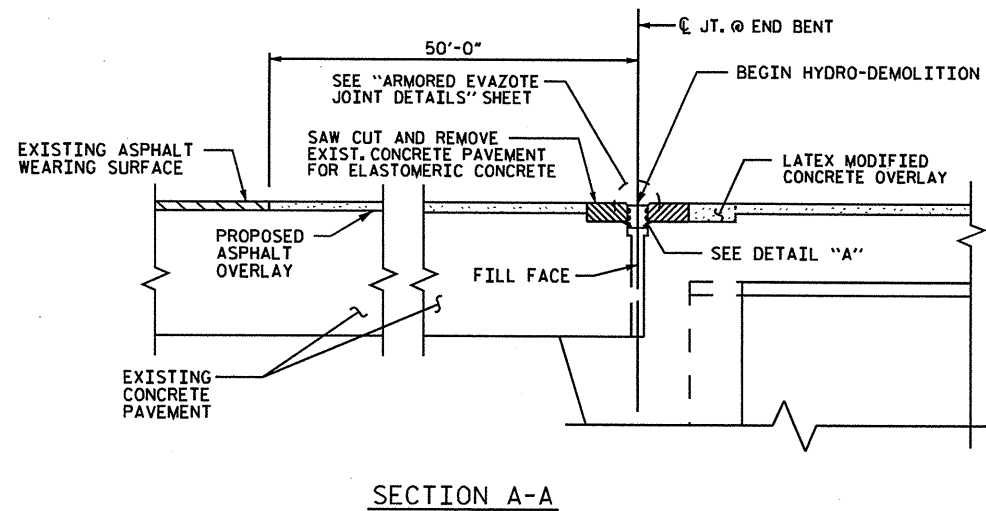
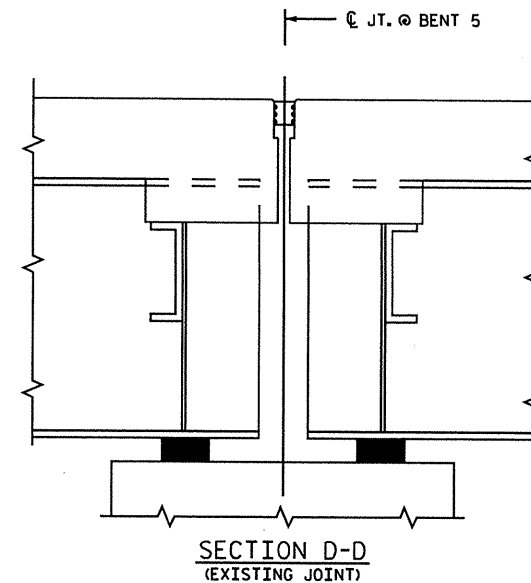
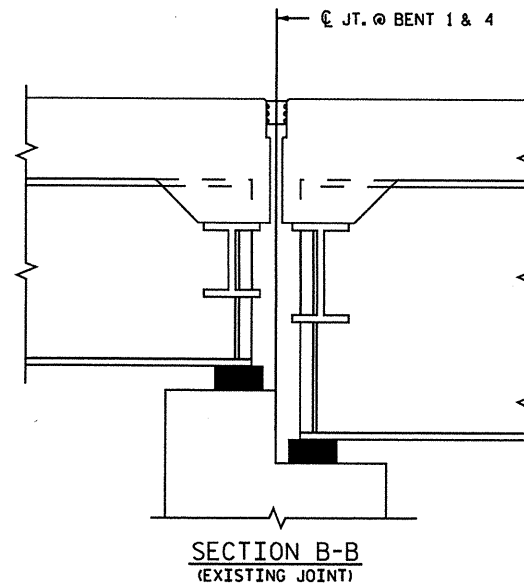
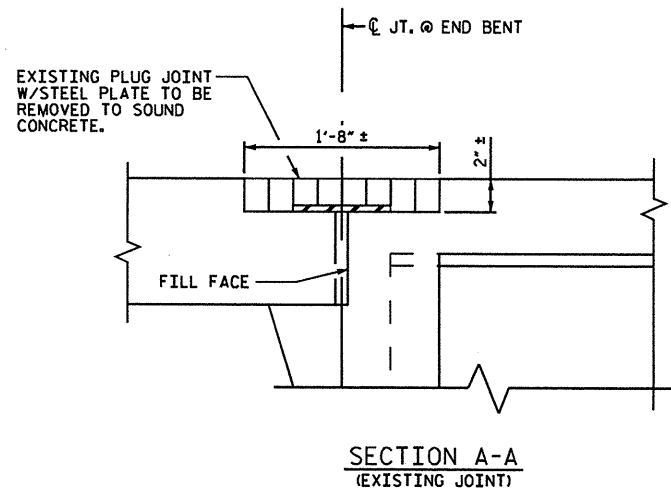
STATE OF NORTH CAROLINA
 DEPARTMENT OF TRANSPORTATION
 RALEIGH

PLAN OF SPANS
 FOR DECK REPAIR



DRAWN BY : M.A. ALLEN DATE : 10-09
 CHECKED BY : B.C. HANKS DATE : 10-09

| REVISIONS | | | | | | SHEET NO. |
|-----------|----|------|-----|----|------|--------------|
| NO. | BY | DATE | NO. | BY | DATE | TOTAL SHEETS |
| 1 | | | 3 | | | 5-4 |
| 2 | | | 4 | | | 9 |



PROJECT NO. B-4700S
HAYWOOD COUNTY
 STATION: 1074+60 -L-

SHEET 1 OF 2

STATE OF NORTH CAROLINA
 DEPARTMENT OF TRANSPORTATION
 RALEIGH

SUPERSTRUCTURE
 JOINT AND SLAB
 REPAIR DETAILS

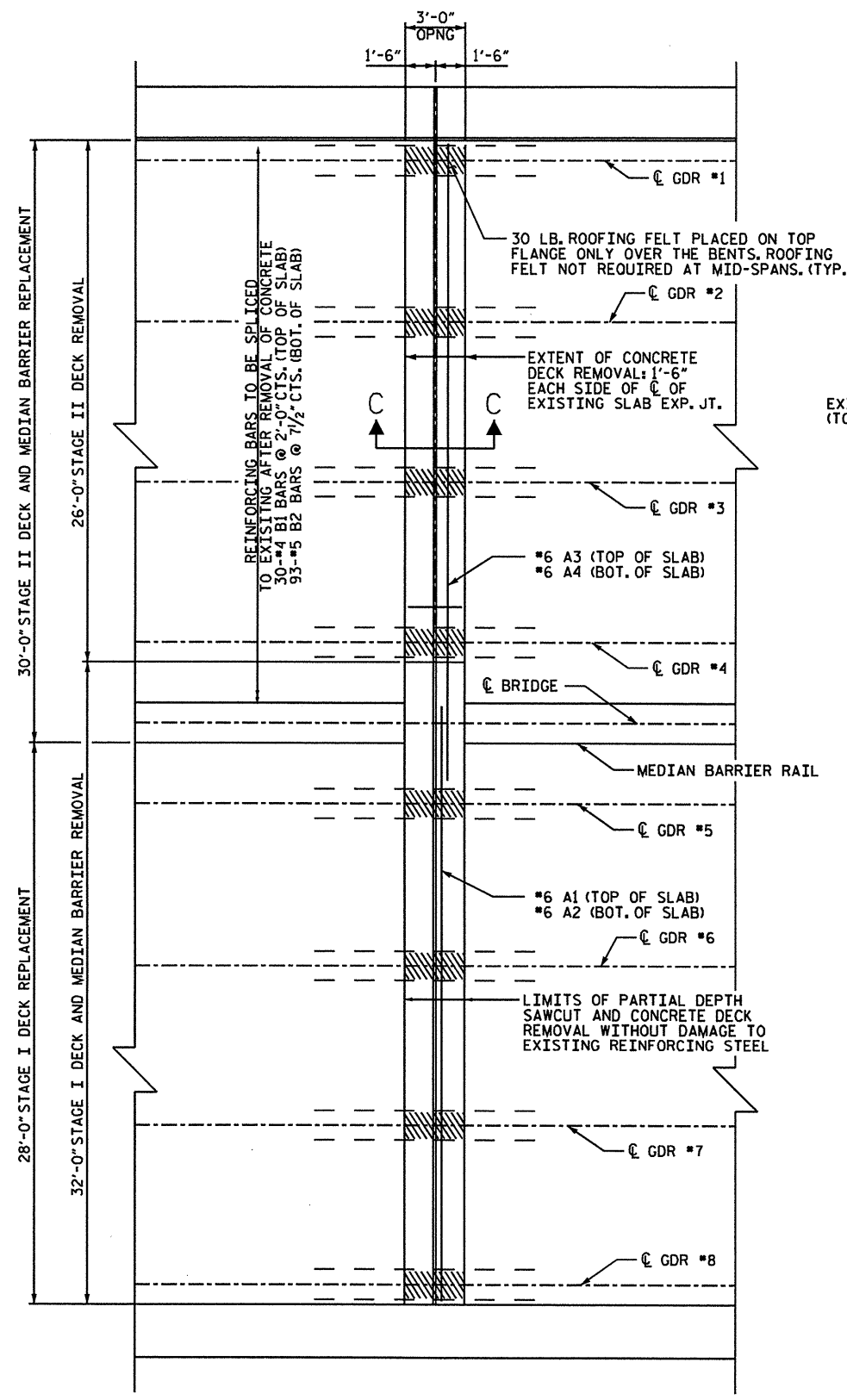
DRAWN BY : M.A. ALLEN DATE : 10-09
 CHECKED BY : B.C. HANKS DATE : 10-09

| REVISIONS | | | | | | SHEET NO. |
|-----------|----|------|-----|----|------|--------------|
| NO. | BY | DATE | NO. | BY | DATE | S-5 |
| 1 | | | 3 | | | TOTAL SHEETS |
| 2 | | | 4 | | | 9 |

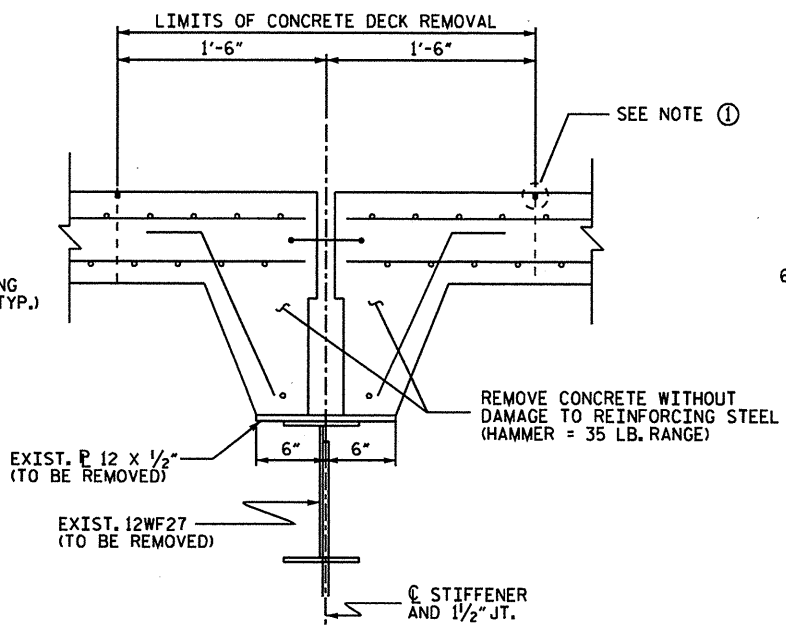
| BILL OF MATERIAL | | | | | |
|----------------------------|-----|------|------|--------|------------|
| 1 JOINT SHOWN (5 REQ'D) | | | | | |
| BAR | NO. | SIZE | TYPE | LENGTH | WEIGHT |
| *A1 | 1 | #6 | STR | 31'-8" | 48 |
| A2 | 1 | #6 | STR | 31'-8" | 48 |
| *A3 | 1 | #6 | STR | 29'-8" | 45 |
| A4 | 1 | #6 | STR | 29'-8" | 45 |
| *B1 | 30 | #4 | STR | 2'-8" | 53 |
| B2 | 93 | #5 | STR | 2'-8" | 259 |
| REINFORCING STEEL | | | | | = 352 LBS |
| *EPOXY COATED REINF. STEEL | | | | | = 146 LBS |
| CLASS AA CONCRETE | | | | | = 4.3 C.Y. |

NOTES

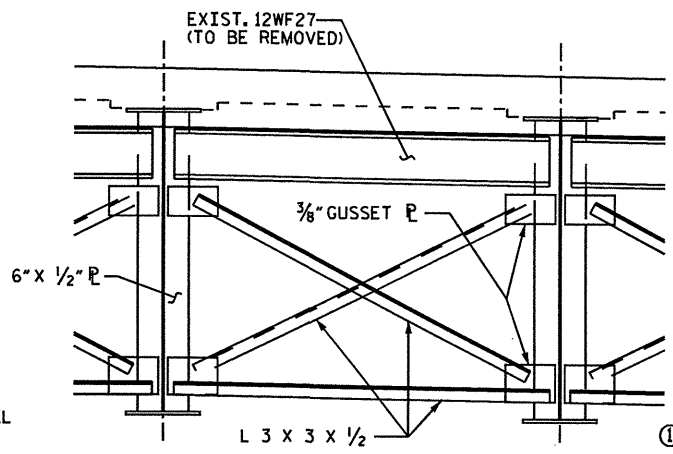
- MEDIAN BARRIER AND DECK REMOVAL SHALL BE PERFORMED BY FIRST INTRODUCING A PARTIAL DEPTH SAWCUT (1/2" MAX DEPTH) FOLLOWED BY CONCRETE REMOVAL WITH A CHIPPING HAMMER IN THE RANGE OF 35 LBS. CARE SHALL BE TAKEN SO AS TO PREVENT DAMAGE TO EXISTING MEDIAN BARRIER AND DECK REINFORCING STEEL AND EXISTING GIRDERS.
- THE JOINT OPENING AT THE EXISTING/NEWLY PLACED CONCRETE INTERFACE SHALL BE SAWED NO MORE THAN 12 HOURS AFTER THE OVERLAY IS PLACED. THE JOINT SHALL BE CLEANED OF ALL DEBRIS BEFORE THE SEALANT IS APPLIED. THE JOINT SEALER MATERIAL SHALL CONFORM TO THE REQUIREMENTS OF TYPE SL LOW MODULUS SILICONE SEALANT.
- ANY MEANS OF ATTACHING FORMS OR FALSEWORK TO THE TOP FLANGE WILL NOT BE PERMITTED AT BENTS 1 AND 4.



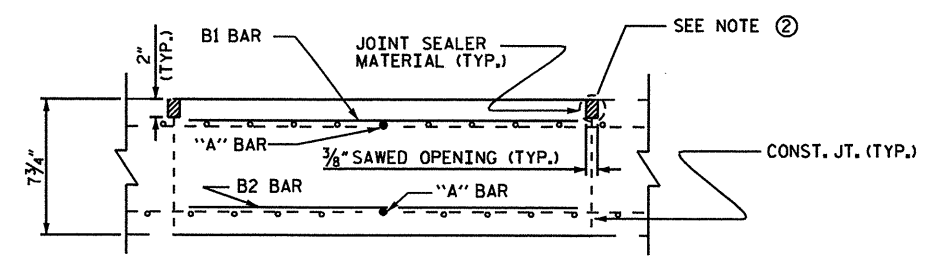
SLAB EXPANSION JOINT REPAIR



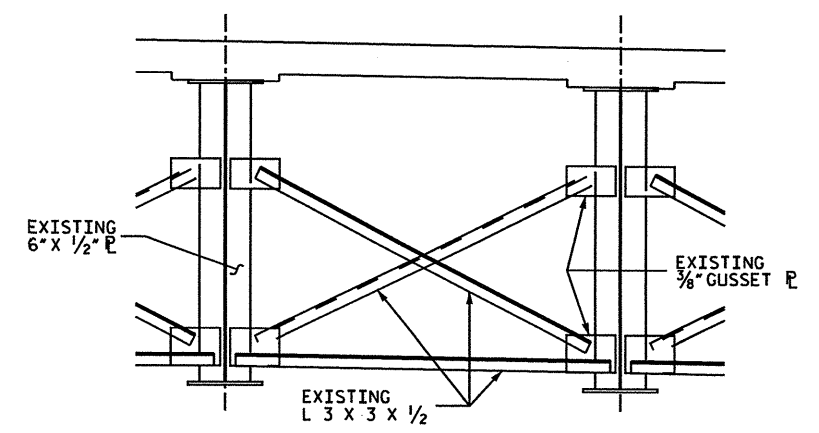
EXISTING SECTION C-C



EXISTING DIAPHRAGMS

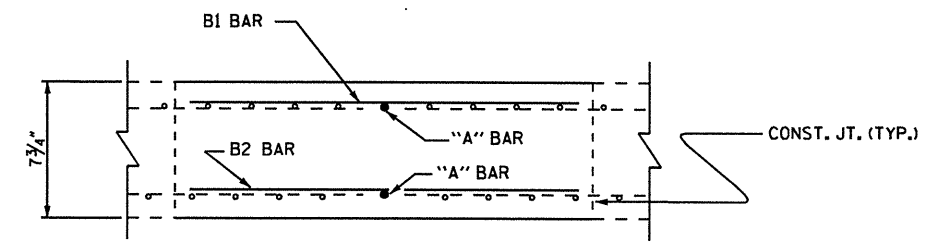


PROPOSED SECTION C-C @ BENTS 2 AND 3



PROPOSED DIAPHRAGMS

(EXIST. 12WF27 & EDGE BEAM TO BE REMOVED)



PROPOSED SECTION C-C AT MIDSPAN OF SPANS B, C & D

(3/8" WIDE AND 2" DEEP SAWCUT WITH JOINT SEALER NOT REQ'D)

PROJECT NO. B-4700S

HAYWOOD COUNTY

STATION: 1074+60 -L-

SHEET 2 OF 2

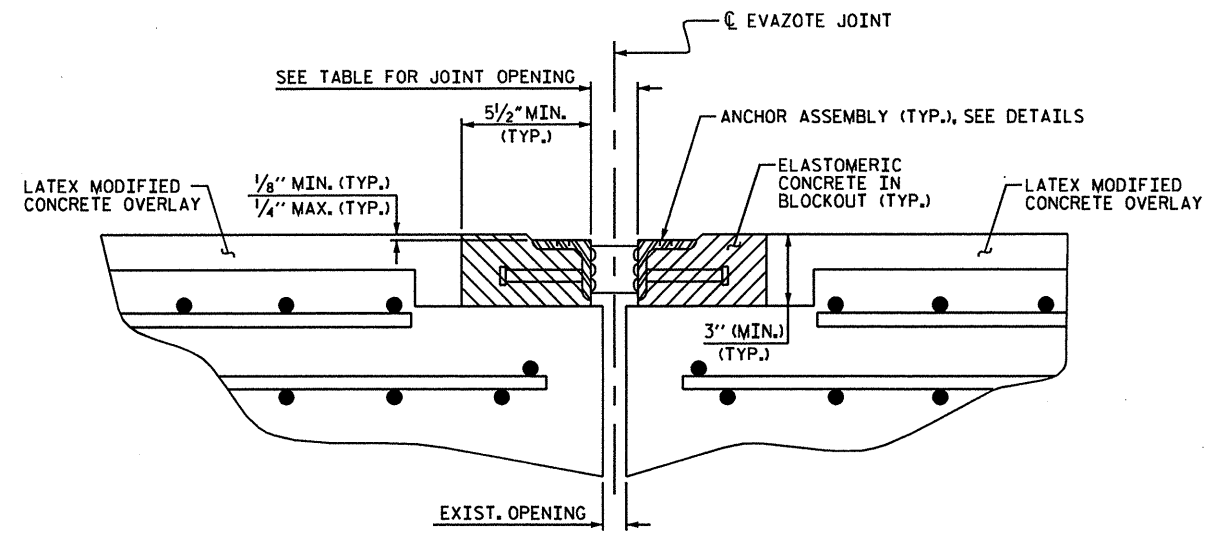
STATE OF NORTH CAROLINA
DEPARTMENT OF TRANSPORTATION
RALEIGH

SUPERSTRUCTURE
JOINT AND SLAB
REPAIR DETAILS

DRAWN BY: M.A. ALLEN DATE: 10-09

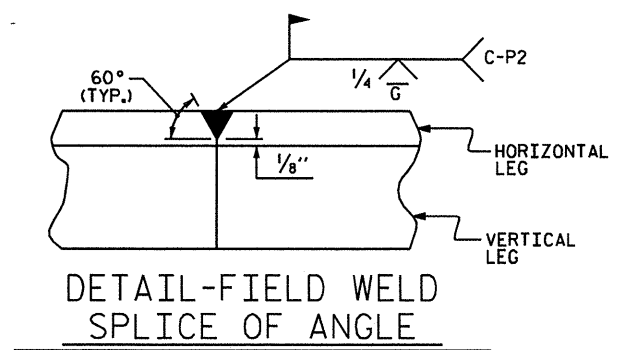
CHECKED BY: B.C. HANKS DATE: 10-09

| REVISIONS | | | | | | SHEET NO. |
|-----------|----|------|-----|----|------|----------------|
| NO. | BY | DATE | NO. | BY | DATE | S-6 |
| 1 | | | 3 | | | TOTAL SHEETS 9 |
| 2 | | | 4 | | | |



ARMORED JOINT DETAILS

SECTION NORMAL TO JOINT AT BENT



DETAIL-FIELD WELD SPLICE OF ANGLE

| BILL OF MATERIAL | | |
|------------------|----------------------------------|----------------------------|
| BENT NO. | ELASTOMERIC CONCRETE * (CU. FT.) | TOTAL LENGTH OF ANGLE (FT) |
| EB1 | 12.8 | 112'-0" |
| B1 | 12.8 | 112'-0" |
| B4 | 12.8 | 112'-0" |
| B5 | 12.8 | 112'-0" |
| EB2 | 12.8 | 112'-0" |

* BASED ON THE MINIMUM BLOCKOUT SHOWN.

NOTES

ANGLES SHALL CONFORM TO AASHTO M270 GRADE 36 STEEL OR APPROVED EQUAL. ALL STUD ANCHORS SHALL CONFORM TO AASHTO M169 GRADES 1010 THRU 1020 OR APPROVED EQUAL.

STUD ANCHORS SHALL BE SHOP WELDED AND ALL HOLES SHALL BE SHOP DRILLED AS SHOWN ON THE PLANS. STUD ANCHORS SHALL BE ELECTRIC ARC END WELDED WITH COMPLETE FUSION.

UPON COMPLETION OF SHOP FABRICATION, THE ENTIRE ANCHOR ASSEMBLY SHALL BE METALLIZED. THE 1/2" Ø STUD ANCHORS AND ANCHOR TABS NEED NOT BE METALLIZED. SEE SPECIAL PROVISION FOR THERMAL SPRAYED COATINGS (METALLIZATION).

ANCHOR ASSEMBLY SHALL BE MADE CONTINUOUS THE LENGTH OF THE JOINT FROM GUTTER TO GUTTER. FOR FIELD SPLICES AT ALL CROWN BREAK POINTS, THE ENDS OF THE STEEL ANGLES SHALL BE CUT PARALLEL TO THE BRIDGE CENTERLINE. FINISHED FIELD WELDS SHALL BE GROUND SMOOTH AND COATED WITH A MINIMUM THICKNESS OF 4 DRY MILS OF ZINC-RICH PAINT IN ACCORDANCE WITH THE STANDARD SPECIFICATIONS.

ANCHOR ASSEMBLY SEGMENTS SHALL NOT BE LESS THAN 12 FEET NOR MORE THAN 20 FEET IN LENGTH. SHORTER SEGMENTS MAY BE USED AT THE EDGE OF ROADWAY OR AT POINTS OF STAGED CONSTRUCTION.

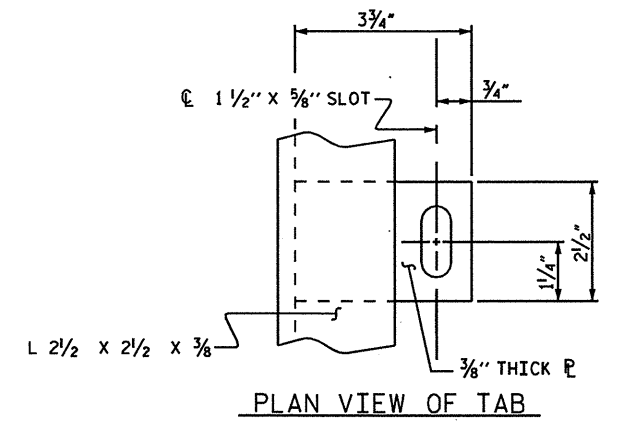
THE ANCHOR ASSEMBLY SHALL BE SECURED AND LEVELED AS SHOWN IN THE "ARMORED JOINT ANCHOR ASSEMBLY DETAILS". NO SUBMITTALS ARE REQUIRED FOR 3/8" Ø EXPANSION ANCHORS, NUTS OR WASHERS. THE CONTRACTOR MAY SUBMIT FOR APPROVAL AN ALTERNATE METHOD OF ALIGNING AND LEVELING THE ANGLES. THE ALTERNATE METHOD SHALL NOT INCLUDE ANY WELDING TO THE OUTSIDE FACE OF THE ANGLES.

AFTER THE ELASTOMERIC CONCRETE HAS BEEN CAST ON BOTH SIDES OF THE JOINT, REMOVE ANY EXCESS CONCRETE THAT COMES THROUGH THE WEEP HOLES AND THOROUGHLY CLEAN THE ANGLES. ANY DAMAGED STEEL SHALL BE COATED WITH A MINIMUM OF 4 MILS OF ZINC-RICH PAINT IN ACCORDANCE WITH THE STANDARD SPECIFICATIONS.

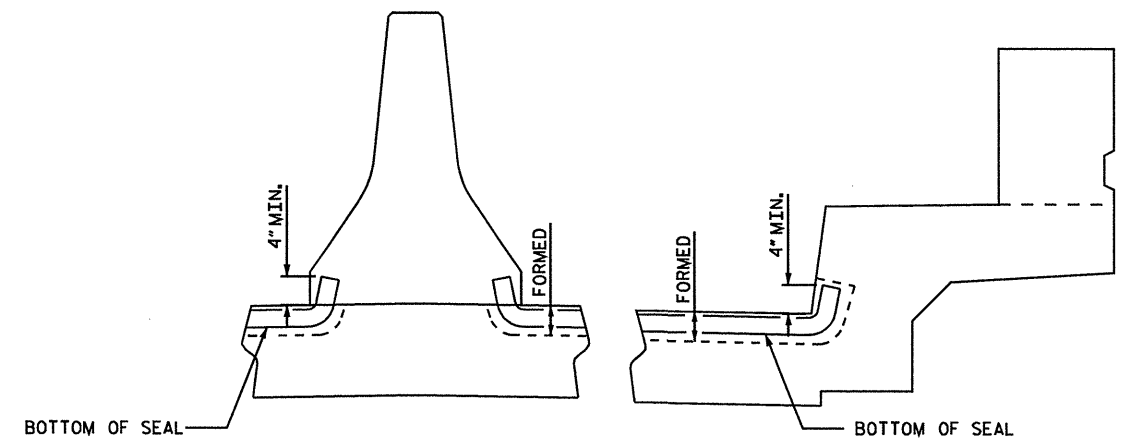
SEE SPECIAL PROVISIONS FOR EVAZOTE JOINT SEALS.

SEE SPECIAL PROVISIONS FOR ELASTOMERIC CONCRETE.

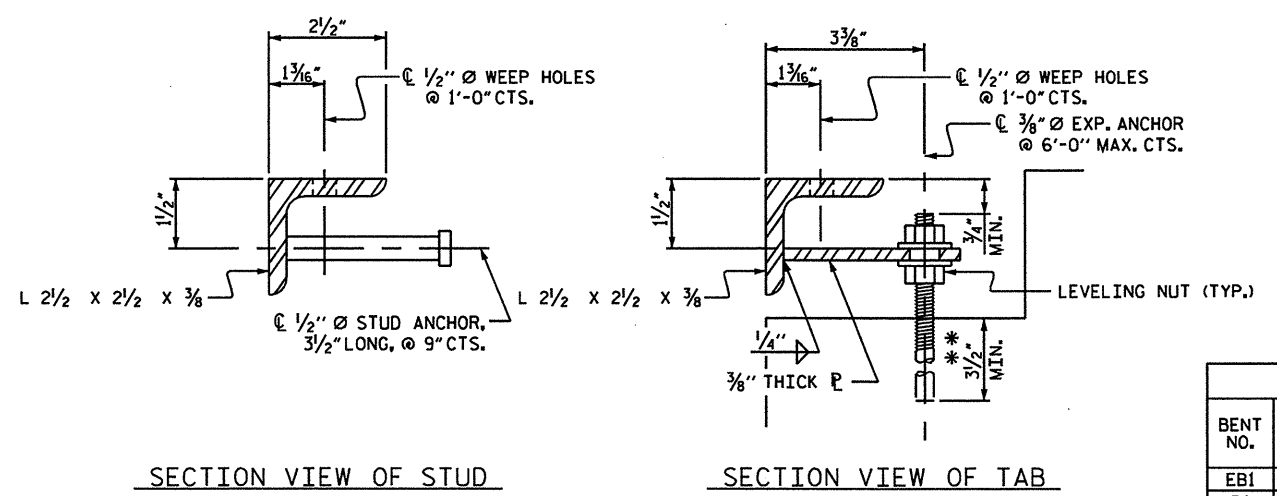
** AFTER THE CLASS I OR CLASS II SURFACE PREPARATION AT THE AREAS REQUIRING EVAZOTE JOINT SEALS IS COMPLETE, ADHESIVE ANCHORAGE MAY BE REQUIRED TO INSTALL THE 3/8" Ø EXP. ANCHORS. IF ADHESIVE ANCHORAGE IS REQUIRED SEE SPECIAL PROVISIONS FOR "ADHESIVELY ANCHORED ANCHOR BOLTS OR DOWELS". THE PULL OUT STRENGTH OF THE 3/8" Ø EXP. ANCHORS SHALL BE 20 KIPS.



PLAN VIEW OF TAB



EVAZOTE JT. IN RAILS



SECTION VIEW OF STUD

SECTION VIEW OF TAB

ARMORED JOINT ANCHOR ASSEMBLY DETAILS

| MOVEMENT AND SETTING AT EVAZOTE JOINT | | | | | | |
|---------------------------------------|------------|---------------------------------|---------------------------------|--------------------------------------|--------------------------------------|--------------------------------------|
| BENT NO. | SKEW ANGLE | NOMINAL UNCOMPRESSED SEAL WIDTH | TOTAL MOVEMENT (ALONG C.R.D.WY) | PERPENDICULAR JOINT OPENING AT 45° F | PERPENDICULAR JOINT OPENING AT 60° F | PERPENDICULAR JOINT OPENING AT 90° F |
| EB1 | 90° | 2 1/2" | 0" | 1 7/8" | 1 7/8" | 1 7/8" |
| B1 | 90° | 3 3/16" | 2" | 2 13/16" | 2 1/2" | 2" |
| B4 | 90° | 3 3/16" | 2" | 2 13/16" | 2 1/2" | 2" |
| B5 | 90° | 2 1/2" | 3/16" | 1 7/8" | 1 7/8" | 1 7/8" |
| EB2 | 90° | 2 1/2" | 0" | 1 7/8" | 1 7/8" | 1 7/8" |

TOTAL MOVEMENT IS CALCULATED ALONG THE CENTERLINE OF ROADWAY. JOINT OPENINGS ARE MEASURED PERPENDICULAR TO THE JOINT.

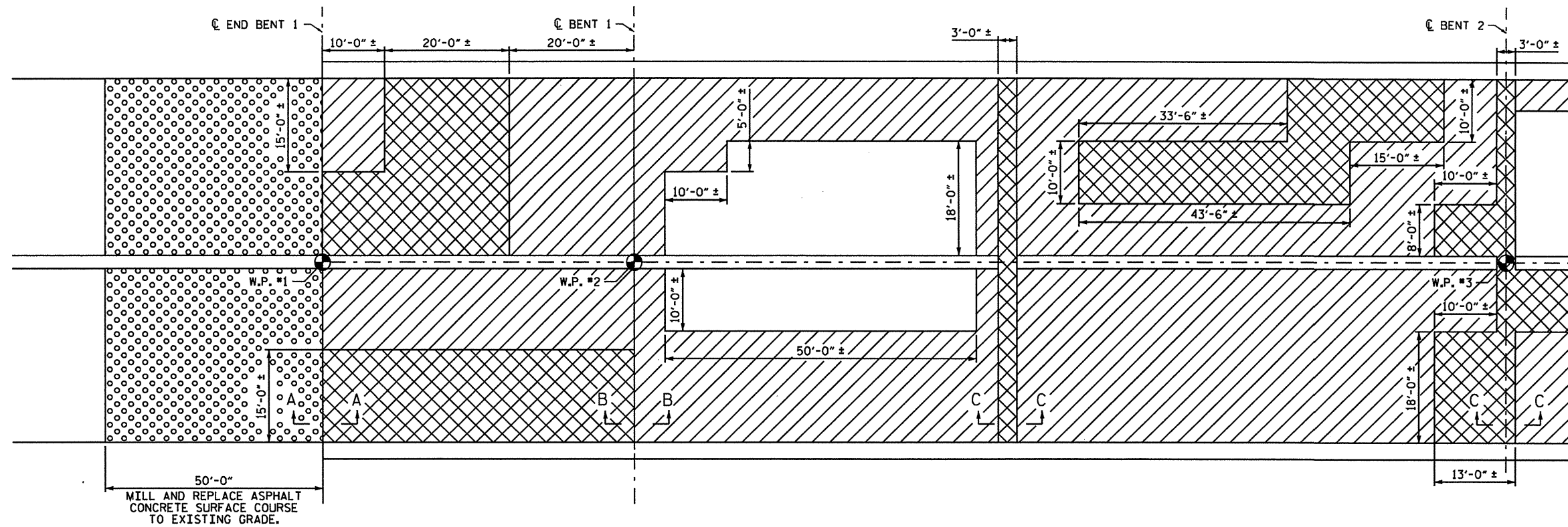
PROJECT NO. B-4700S
HAYWOOD COUNTY
 STATION: 1074+60 -L-

STATE OF NORTH CAROLINA
 DEPARTMENT OF TRANSPORTATION
 RALEIGH

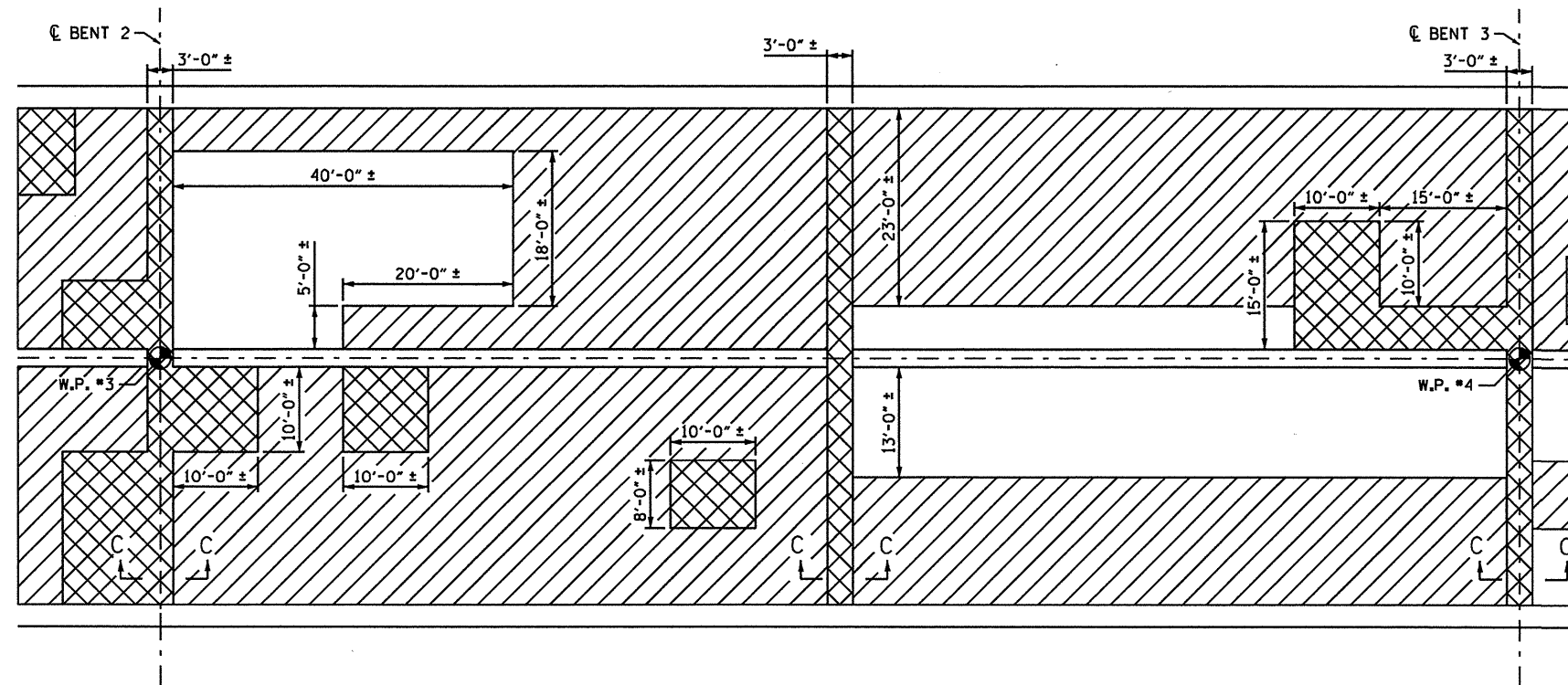
ARMORED EVAZOTE JOINT DETAILS

ASSEMBLED BY : M.A. ALLEN DATE : 10-09
 CHECKED BY : B.C. HANKS DATE : 10-09
 DRAWN BY : EEM 1/96 REV. 7/10/01 LES/RDR
 CHECKED BY : RGW 1/96 REV. 5/7/03RR RWW/JTE
 REV. 5/1/06 TLA/GM

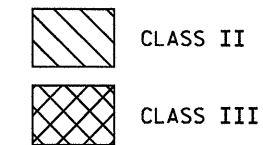
| REVISIONS | | | | | | SHEET NO. |
|-----------|----|------|-----|----|------|----------------|
| NO. | BY | DATE | NO. | BY | DATE | |
| 1 | | | 3 | | | TOTAL SHEETS 9 |
| 2 | | | 4 | | | |



PLAN OF SPANS



PLAN OF SPANS



PROJECT NO. B-4700S
HAYWOOD COUNTY
 STATION: 1074+60 -L-

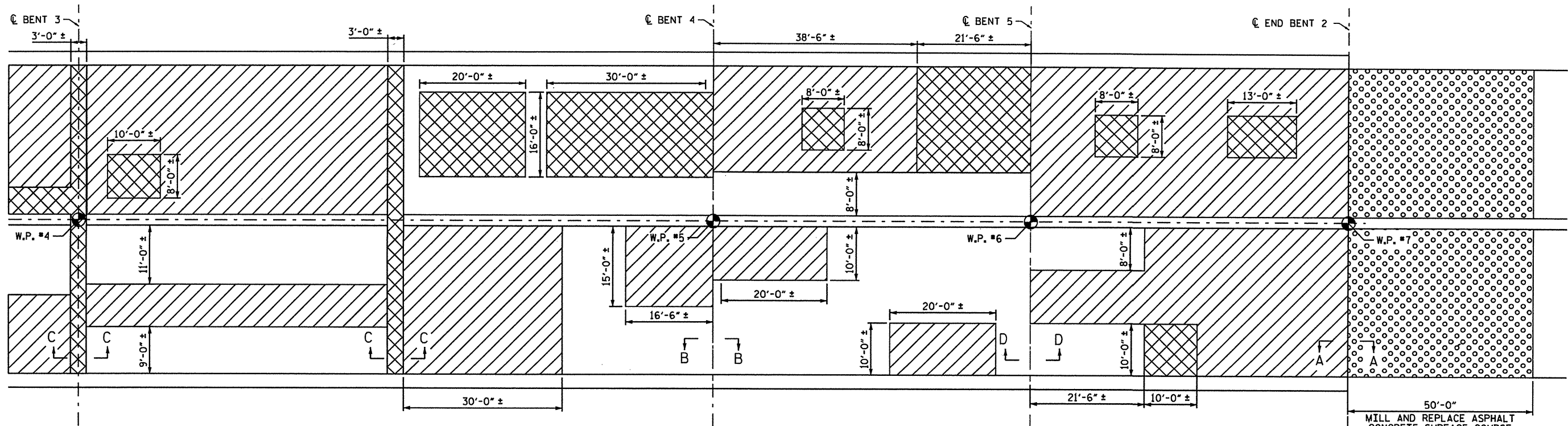
SHEET 1 OF 2

STATE OF NORTH CAROLINA
 DEPARTMENT OF TRANSPORTATION
 RALEIGH

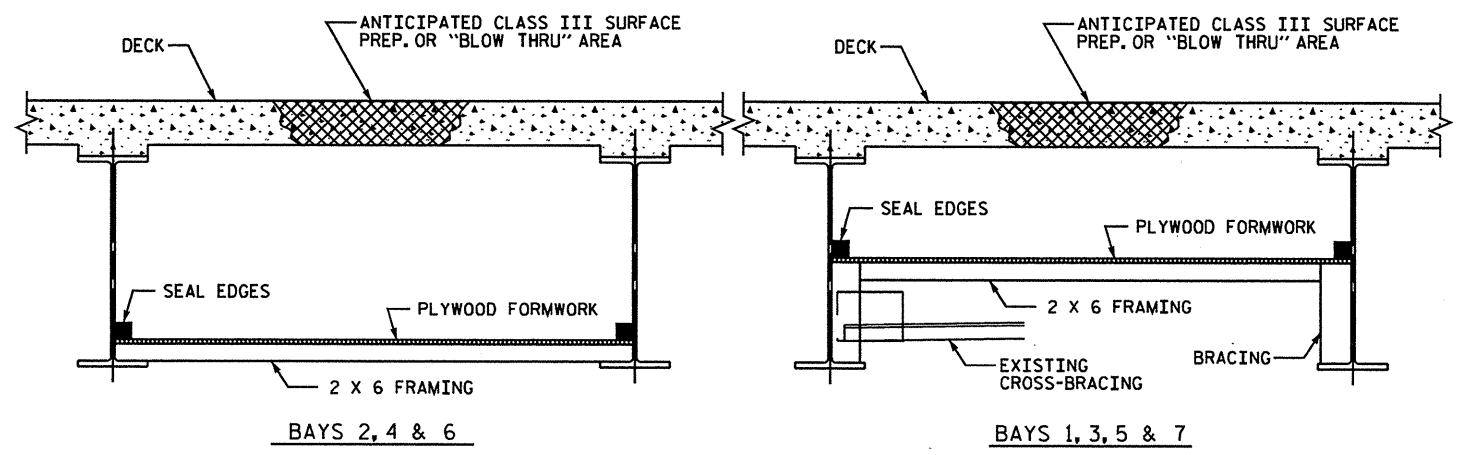
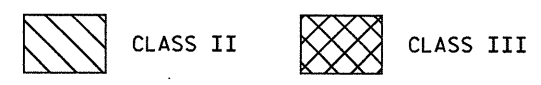
PLAN OF SPANS
 FOR DECK REPAIR

DRAWN BY : M.A. ALLEN DATE : 10-09
 CHECKED BY : B.C. HANKS DATE : 10-09

| REVISIONS | | | | | | SHEET NO. |
|-----------|----|------|-----|----|------|--------------|
| NO. | BY | DATE | NO. | BY | DATE | S-8 |
| 1 | | | 3 | | | TOTAL SHEETS |
| 2 | | | 4 | | | 9 |



PLAN OF SPANS

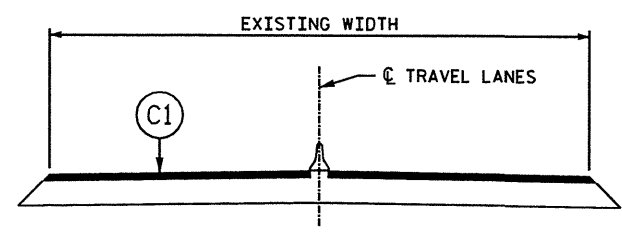


TYP. "BLOW THRU" CONTAINMENT AND FORMWORK

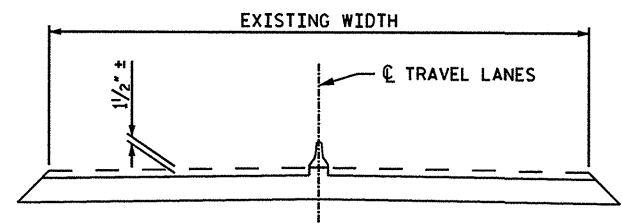
A METHOD TO CAPTURE WATER AND DEBRIS FROM BLOW THRU DURING HYDRO-DEMOLITION SHALL BE INSTALLED IN AREAS INDICATED AS CLASS III SURFACE PREPARATION.

SUBMIT DETAILS OF PROPOSED FORMWORK FOR APPROVAL PRIOR TO BEGINNING WORK.

COSTS FOR INSTALLING AND REMOVING FORMWORK SHALL BE INCIDENTAL TO THE PRICE PER SQ. YARD OF HYDRO-DEMOLITION.

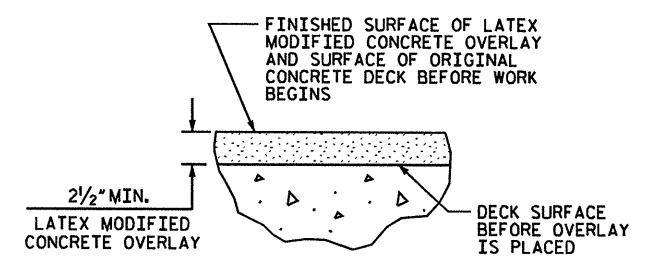


TYPICAL ROADWAY SECTION



TYPICAL ROADWAY MILLING SECTION

C1 PROP. APPROX. 1 1/2" ± ASPHALT CONCRETE SURFACE COURSE, TYPE SF9.5A, AT AN AVERAGE RATE OF OF 165 LBS. PER SQ. YD.



DETAIL FOR LATEX MODIFIED CONCRETE OVERLAY

PROJECT NO. B-4700S
HAYWOOD COUNTY
 STATION: 1074+60 -L-

SHEET 2 OF 2

STATE OF NORTH CAROLINA
 DEPARTMENT OF TRANSPORTATION
 RALEIGH

PLAN OF SPANS
 FOR DECK REPAIR

DRAWN BY: M.A. ALLEN DATE: 10-09
 CHECKED BY: B.C. HANKS DATE: 10-09

| REVISIONS | | | | | | SHEET NO. S-9 |
|-----------|----|------|-----|----|------|-------------------|
| NO. | BY | DATE | NO. | BY | DATE | |
| 1 | | | 3 | | | TOTAL SHEETS 9 |
| 2 | | | 4 | | | |

WBS 36727.3.18

TIP NO.: B-4700S

I:\4\2009\InTrafficControl\TCP\B-4700S Haywood\17\PLAN_SHEETS\B-4700S_tcp_psh_01.dgn
dkarageorge

STATE OF NORTH CAROLINA
DIVISION OF HIGHWAYS

**PLAN FOR PROPOSED
TRAFFIC CONTROL, MARKING & DELINEATION
HAYWOOD COUNTY**

LOCATION: BRIDGE 171 ON I-40 OVER SR 1338 WHITE OAK RD.
TYPE OF WORK: TRAFFIC CONTROL FOR BRIDGE DECK PRESERVATION

| | |
|-----------------------------|-----------|
| STATE PROJECT REFERENCE NO. | SHEET NO. |
| B-4700S | TCP-1 |

LEGEND

- GENERAL**
- DIRECTION OF TRAFFIC FLOW
 - NORTH ARROW
 - EXISTING PAVEMENT
 - WORK AREA
- TRAFFIC CONTROL DEVICES**
- TYPE III BARRICADE
 - CONE
 - DRUM SKINNY DRUM
 - FLASHING ARROW PANEL (TYPE C)
 - STATIONARY SIGN
 - PORTABLE SIGN
 - STATIONARY OR PORTABLE SIGN
 - TEMPORARY CRASH CUSHION
 - CHANGEABLE MESSAGE SIGN
 - TRUCK MOUNTED IMPACT ATTENUATOR (TMIA)
 - LAW ENFORCEMENT
 - FLAGGER
 - PORTABLE CONCRETE BARRIER

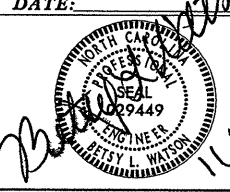

ROADWAY STANDARD DRAWINGS

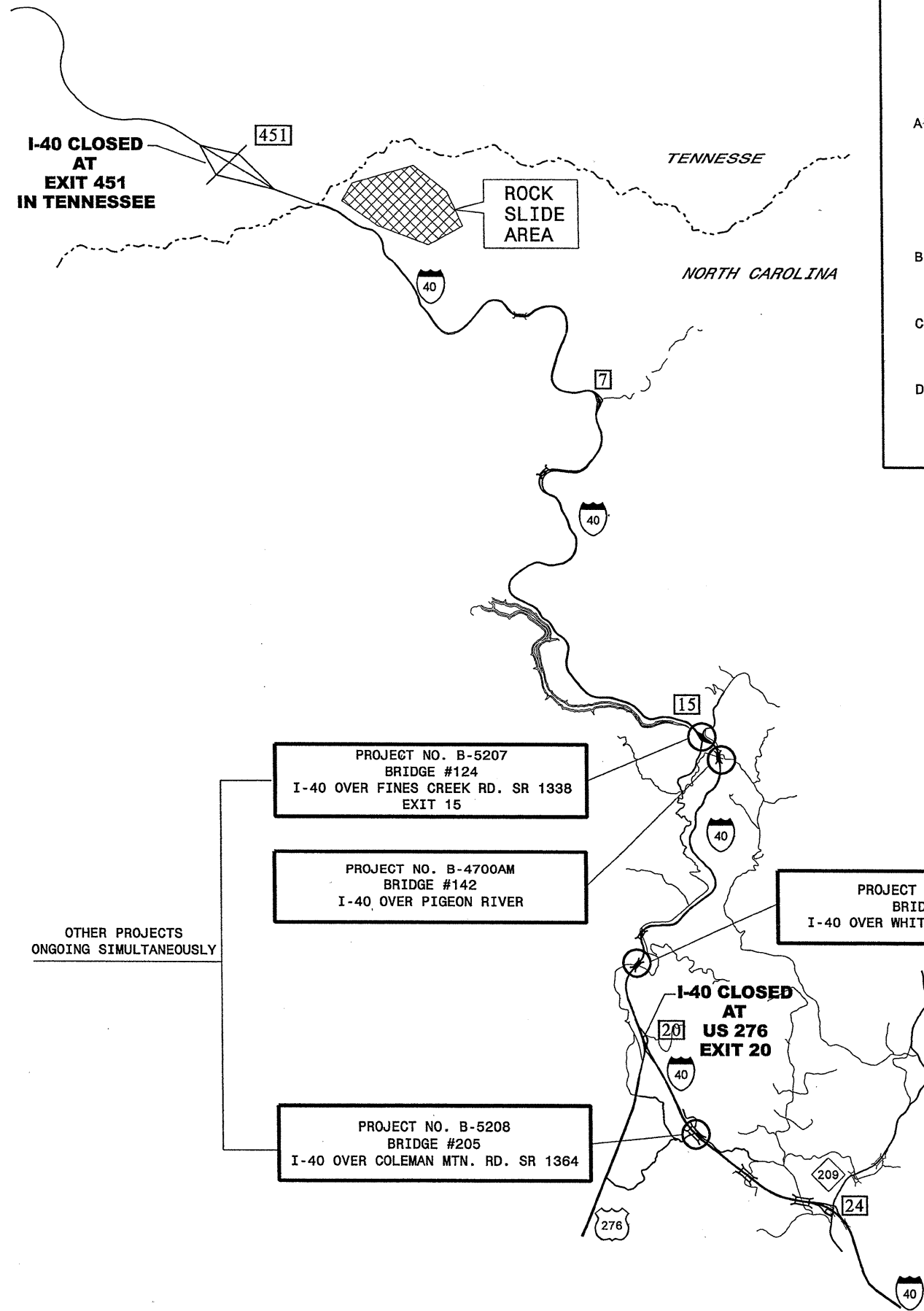
THE FOLLOWING ROADWAY STANDARDS AS APPEAR IN "ROADWAY STANDARD DRAWINGS" - PROJECT SERVICES UNIT - N.C. DEPARTMENT OF TRANSPORTATION - RALEIGH, N.C., DATED JULY 2006 ARE APPLICABLE TO THIS PROJECT AND BY REFERENCE HEREBY ARE CONSIDERED A PART OF THESE PLANS:

| STD. NO. | TITLE |
|----------|---|
| 1110.01 | STATIONARY WORK ZONE SIGNS |
| 1145.01 | BARRICADES |
| 1160.01 | TEMPORARY CRASH CUSHION |
| 1170.01 | PORTABLE CONCRETE BARRIER |
| 1205.01 | PAVEMENT MARKINGS - LINE TYPES & OFFSETS |
| 1205.02 | PAVEMENT MARKINGS - 2 LANE & MULTILANE ROADWAYS |

INDEX OF SHEETS

| SHEET NO. | TITLE |
|-----------|---|
| TCP-1 | LIST OF APPLICABLE ROADWAY STANDARD DRAWINGS, LEGEND, & INDEX OF SHEETS |
| TCP-2 | GENERAL NOTES, PHASING, VICINITY MAP. |
| TCP-3 | PHASE I I-40 EASTBOUND DECK PRESERVATION |
| TCP-4 | PHASE II I-40 WESTBOUND DECK PRESERVATION |

| | | |
|--|--|--|
| APPROVED: _____ DATE: _____  11/4/09 | PLAN PREPARED BY:  Betsy L. Watson, PE George Karageorge | Stantec Consulting Services Inc. Suite 300, 801 Jones Franklin Road Raleigh, NC 27606 Tel. 919.851.6866 Fax. 919.851.7024 www.stantec.com TRAFFIC CONTROL ENGINEER TRAFFIC CONTROL DESIGNER |
|--|--|--|



GENERAL NOTES

| | |
|-----------------------|-----------|
| PROJECT REFERENCE NO. | SHEET NO. |
| B-4700S | TCP-2 |

- THE FOLLOWING GENERAL NOTES APPLY AT ALL TIMES FOR THE DURATION OF THE CONSTRUCTION PROJECT EXCEPT WHEN OTHERWISE NOTED IN THE PLAN OR DIRECTED BY THE ENGINEER.
- A) INTERSTATE 40 THROUGH THE AREA OF THIS PROJECT IS CLOSED TO PUBLIC THROUGH TRAFFIC DUE TO ROCK SLIDE INCIDENT NEAR THE TENNESSEE BORDER. CONSTRUCTION VEHICLES WILL BE USING I-40 TO ACCESS THE ROCK SLIDE AREA FOR CLEAN-UP. IN ADDITION, LOCAL TRAFFIC WILL BE USING ONE SIDE OF I-40 FOR ACCESS TO EXITS 15 AND 7 AS DESCRIBED IN THE PHASING.
 - B) THIS PROJECT IS LET TO CONTRACT SIMULTANEOUSLY WITH OTHER PROJECTS IN THE AREA WHILE I-40 IS CLOSED TO PUBLIC TRAVEL.
 - C) COORDINATE WITH THE CONTRACTOR(S) OF THE OTHER ONGOING BRIDGE PRESERVATION PROJECTS AND THE CONTRACTOR OF THE ROCK SLIDE CLEAN-UP.
 - D) UPON COMPLETION OF THE BRIDGE DECK OVERLAYS REPLACE THE EXISTING PAVEMENT MARKINGS ON I-40 WITH POLYUREA MARKINGS.

CHANGES MAY BE REQUIRED WHEN PHYSICAL DIMENSIONS IN THE DETAIL DRAWINGS, STANDARD DETAILS, AND ROADWAY DETAILS ARE NOT ATTAINABLE TO MEET FIELD CONDITIONS OR RESULT IN DUPLICATE OR UNDESIRED OVERLAPPING OF DEVICES. MODIFICATION MAY INCLUDE: MOVING, SUPPLEMENTING, COVERING, OR REMOVAL OF DEVICES AS DIRECTED BY THE ENGINEER.

TRAFFIC BARRIER

E) INSTALL TEMPORARY BARRIER ACCORDING TO THE STRUCTURE PLANS AND TRAFFIC CONTROL PLANS, OR AS DIRECTED BY THE ENGINEER.

INSTALL OR REMOVE TEMPORARY BARRIER IN A CONTINUOUS OPERATION UNTIL INSTALLATION OR REMOVAL IS COMPLETE. USE FLAGGERS TO DIRECT TRAFFIC DURING INSTALLATION AND REMOVAL.

PROTECT THE APPROACH END OF MOVABLE/PORTABLE CONCRETE BARRIER AT ALL TIMES DURING THE INSTALLATION AND REMOVAL OF THE BARRIER BY EITHER A TRUCK MOUNTED IMPACT ATTENUATOR (MAXIMUM 72 HOURS) OR A TEMPORARY CRASH CUSHION.

TRAFFIC CONTROL PHASING

PHASE I (SEE SHEET TCP-3)

STEP 1:
THE CONTRACTOR OF BRIDGE NO. 124/205 AT FINES CREEK RD./US 276 WILL INSTALL TRAFFIC CONTROL DEVICES AND PLACE I-40 TRAFFIC ON THE EASTBOUND SIDE IN A TWO-LANE TWO-WAY PATTERN.

COORDINATE WITH ADJACENT PROJECT CONTRACTORS BEFORE BEGINNING ANY WORK.

STEP 2:

WITH I-40 CLOSED TO PUBLIC THROUGH TRAFFIC AND WITH CONSTRUCTION/LOCAL TRAFFIC USING I-40 WESTBOUND SIDE, INSTALL PORTABLE COCRETE BARRIER AND CRASH CUSHIONS AND CONSTRUCT BRIDGE #171 DECK PRESERVATION ON THE I-40 EASTBOUND SIDE.

STEP 3:

UPON COMPLETION OF BRIDGE #171 DECK PRESERVATION ON THE EASTBOUND SIDE OF I-40, COORDINATE WITH THE ADJACENT PROJECT CONTRACTORS OF BRIDGE NO.S 124 AND 142. ENSURE THE I-40 EASTBOUND DECK PRESERVATION FOR ALL THREE BRIDGES #124, #142 AND #171 IS COMPLETE BEFORE BEGINNING THE I-40 WESTBOUND SIDE IN PHASE II.

PHASE II (SEE SHEET TCP-4)

STEP 1:
UPON COMPLETION OF THE DECK PRESERVATION FOR THE I-40 EASTBOUND SIDE FOR BRIDGE NO.S 124, 142 AND 171, COORDINATE BEGINNING THE WESTBOUND SIDE WITH THE OTHER CONTRACTORS. THE CONTRACTOR OF BRIDGE #124/205 WILL REVISE TRAFFIC CONTROL DEVICES AND SWITCH I-40 LOCAL/CONSTRUCTION TRAFFIC TO THE I-40 EASTBOUND SIDE IN A TWO-LANE TWO-WAY TRAFFIC PATTERN.

STEP 2:

WITH LOCAL/CONSTRUCTION TRAFFIC OPERATING ON THE I-40 EASTBOUND SIDE, INSTALL PORTABLE COCRETE BARRIER AND CRASH CUSHIONS AND CONSTRUCT BRIDGE #171 DECK PRESERVATION ON THE I-40 WESTBOUND SIDE.

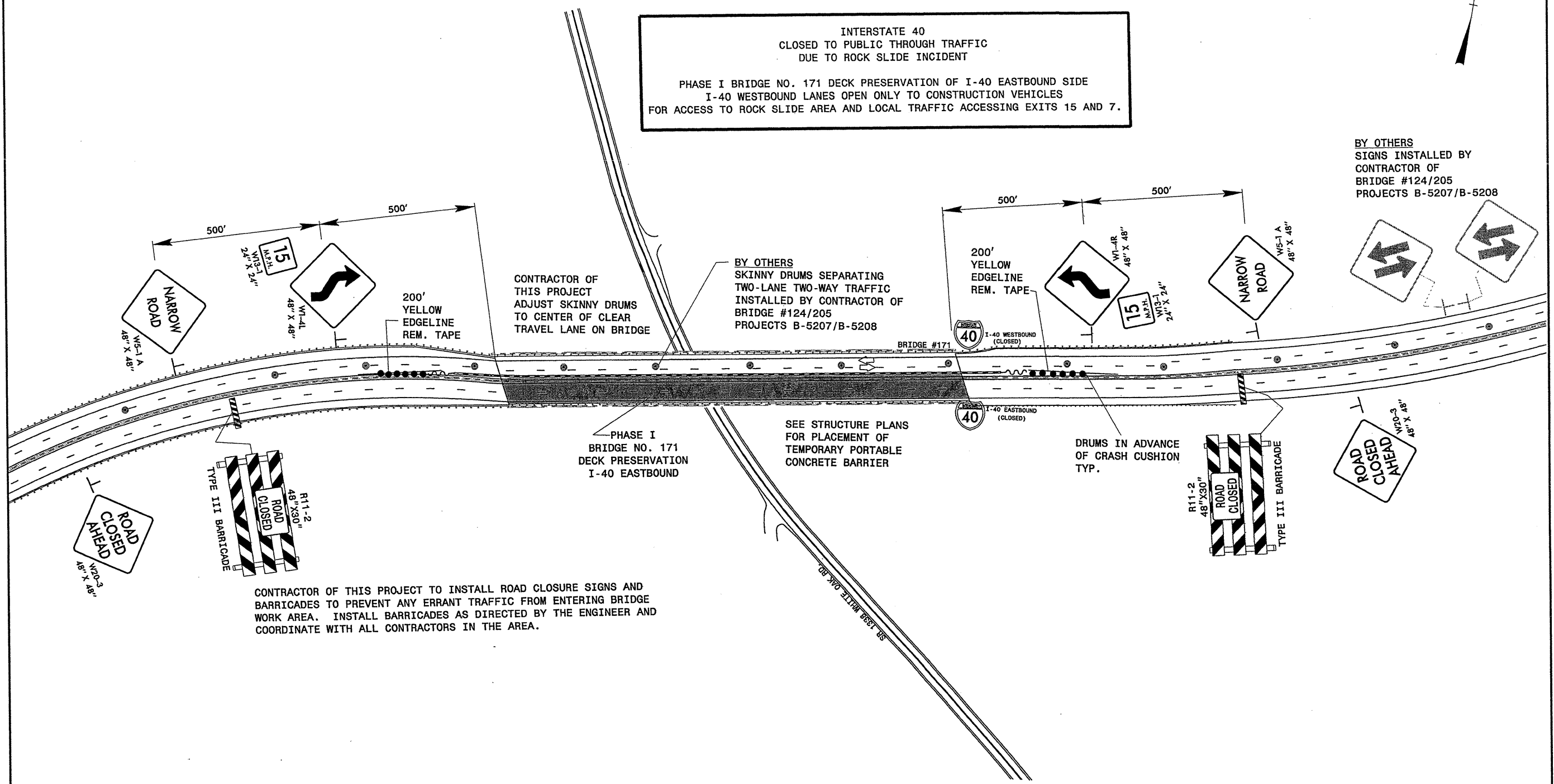
I:\4\2009\15-4700S haywood 171\PLAN_SHEETS\B-4700S_tcp-ph_02.dgn
 gkaregeorge

| | | | | | | | | | | | |
|--|---------------|--|--|--|--|--|--|--|--|--|--|
| Stantec Stantec Consulting Services Inc. Suite 300, 801 Jones Franklin Road Raleigh, NC 27608 Tel. 919.851.6866 Fax. 919.851.7024 www.stantec.com | SEAL | GENERAL NOTES TRAFFIC CONTROL PHASING | | | | | | | | | |
| | SIGNATURE | DATE | SCALE: NONE DATE: OCT. 2009 DWG. BY: GK DESIGN BY: GK REVIEWED BY: BLW | REVISIONS <table border="1"> <tr><td> </td><td> </td></tr> <tr><td> </td><td> </td></tr> <tr><td> </td><td> </td></tr> <tr><td> </td><td> </td></tr> </table> | | | | | | | |
| | | | | | | | | | | | |
| | | | | | | | | | | | |
| | | | | | | | | | | | |
| | | | | | | | | | | | |

INTERSTATE 40
 CLOSED TO PUBLIC THROUGH TRAFFIC
 DUE TO ROCK SLIDE INCIDENT

 PHASE I BRIDGE NO. 171 DECK PRESERVATION OF I-40 EASTBOUND SIDE
 I-40 WESTBOUND LANES OPEN ONLY TO CONSTRUCTION VEHICLES
 FOR ACCESS TO ROCK SLIDE AREA AND LOCAL TRAFFIC ACCESSING EXITS 15 AND 7.

BY OTHERS
 SIGNS INSTALLED BY
 CONTRACTOR OF
 BRIDGE #124/205
 PROJECTS B-5207/B-5208



CONTRACTOR OF THIS PROJECT TO INSTALL ROAD CLOSURE SIGNS AND BARRICADES TO PREVENT ANY ERRANT TRAFFIC FROM ENTERING BRIDGE WORK AREA. INSTALL BARRICADES AS DIRECTED BY THE ENGINEER AND COORDINATE WITH ALL CONTRACTORS IN THE AREA.

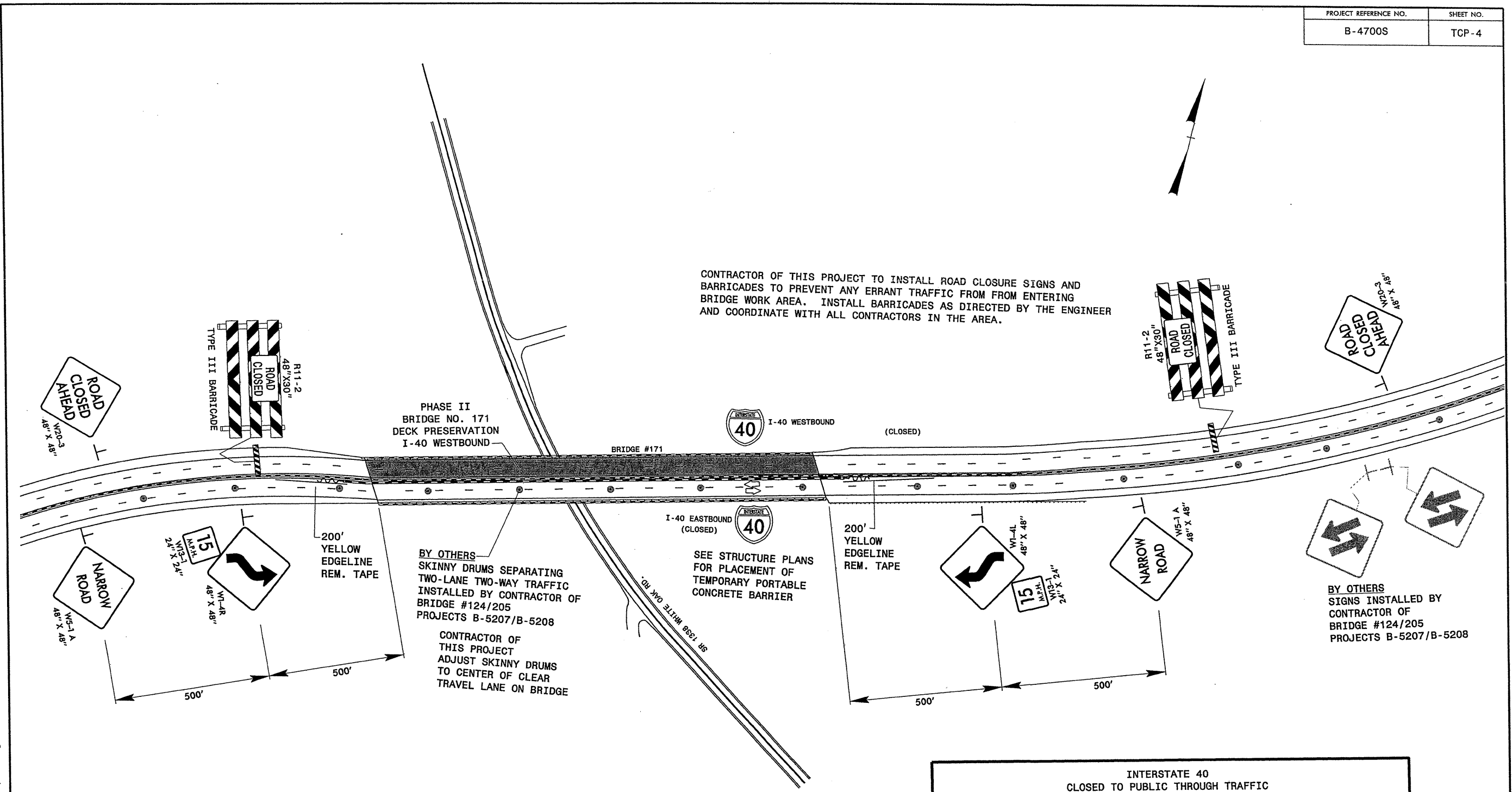
PHASE I
 BRIDGE NO. 171
 DECK PRESERVATION
 I-40 EASTBOUND

SEE STRUCTURE PLANS
 FOR PLACEMENT OF
 TEMPORARY PORTABLE
 CONCRETE BARRIER

DRUMS IN ADVANCE
 OF CRASH CUSHION
 TYP.

K:\4700S\171\PLAN_SHEETS\B-4700S_tep_psh_03.dgn
 10/2/09 10:49:58 AM gharageorge

| | | | | | | | | | | | |
|--|---|--|--|--|--|--|--|--|--|--|--|
| Stantec Stantec Consulting Services Inc. Suite 300, 851 Jones Franklin Road Raleigh, NC 27606 Tel. 919.851.8866 Fax. 919.851.7024 www.stantec.com | SEAL | PHASE I BRIDGE #171 I-40 EASTBOUND DECK PRESERVATION | | | | | | | | | |
| | SIGNATURE: <i>Robert H. Wilson</i> DATE: 11/4/09 | SCALE: NONE DATE: OCT. 2009 DWG. BY: GK DESIGN BY: GK REVIEWED BY: BLW | REVISIONS <table border="1"> <tr><td> </td><td> </td></tr> <tr><td> </td><td> </td></tr> <tr><td> </td><td> </td></tr> <tr><td> </td><td> </td></tr> </table> | | | | | | | | |
| | | | | | | | | | | | |
| | | | | | | | | | | | |
| | | | | | | | | | | | |
| | | | | | | | | | | | |



PHASE II
BRIDGE NO. 171
DECK PRESERVATION
I-40 WESTBOUND

CONTRACTOR OF THIS PROJECT TO INSTALL ROAD CLOSURE SIGNS AND BARRICADES TO PREVENT ANY ERRANT TRAFFIC FROM FROM ENTERING BRIDGE WORK AREA. INSTALL BARRICADES AS DIRECTED BY THE ENGINEER AND COORDINATE WITH ALL CONTRACTORS IN THE AREA.

BY OTHERS
SKINNY DRUMS SEPARATING
TWO-LANE TWO-WAY TRAFFIC
INSTALLED BY CONTRACTOR OF
BRIDGE #124/205
PROJECTS B-5207/B-5208

CONTRACTOR OF
THIS PROJECT
ADJUST SKINNY DRUMS
TO CENTER OF CLEAR
TRAVEL LANE ON BRIDGE

SEE STRUCTURE PLANS
FOR PLACEMENT OF
TEMPORARY PORTABLE
CONCRETE BARRIER

BY OTHERS
SIGNS INSTALLED BY
CONTRACTOR OF
BRIDGE #124/205
PROJECTS B-5207/B-5208

INTERSTATE 40
CLOSED TO PUBLIC THROUGH TRAFFIC
DUE TO ROCK SLIDE INCIDENT

PHASE II BRIDGE NO. 171 DECK PRESERVATION OF I-40 WESTBOUND SIDE.
I-40 EASTBOUND LANES OPEN ONLY TO CONSTRUCTION VEHICLES
FOR ACCESS TO ROCK SLIDE AREA AND LOCAL TRAFFIC ACCESSING EXITS 15 AND 7.

C:\projects\tcp\171\PLAN_SHEETS\B-4700S_tcp_psh_04.dgn
 10/2/2009 11:41:09 AM
 George

Stantec
Stantec Consulting Services Inc.
Suite 300, 801 Jones Franklin Road
Raleigh, NC
27608
Tel. 919.851.6868
Fax. 919.851.7024
www.stantec.com

SEAL

Gregory L. Watson
11/4/09

SIGNATURE DATE

PHASE II
BRIDGE #171 I-40 WESTBOUND
DECK PRESERVATION

| SCALE: | NONE | | <table border="1"> <tr> <th colspan="2">REVISIONS</th> </tr> <tr> <td> </td> <td> </td> </tr> <tr> <td> </td> <td> </td> </tr> <tr> <td> </td> <td> </td> </tr> </table> | REVISIONS | | | | | | | |
|--------------|-----------|--|--|-----------|------|--|--|--|--|--|--|
| REVISIONS | | | | | | | | | | | |
| | | | | | | | | | | | |
| | | | | | | | | | | | |
| | | | | | | | | | | | |
| DATE: | OCT. 2009 | | | | | | | | | | |
| DWG. BY: | GK | | | | | | | | | | |
| DESIGN BY: | GK | | | | | | | | | | |
| REVIEWED BY: | BLW | <table border="1"> <tr> <td>CDS</td> <td> </td> </tr> <tr> <td>FILE</td> <td> </td> </tr> </table> | CDS | | FILE | | | | | | |
| CDS | | | | | | | | | | | |
| FILE | | | | | | | | | | | |