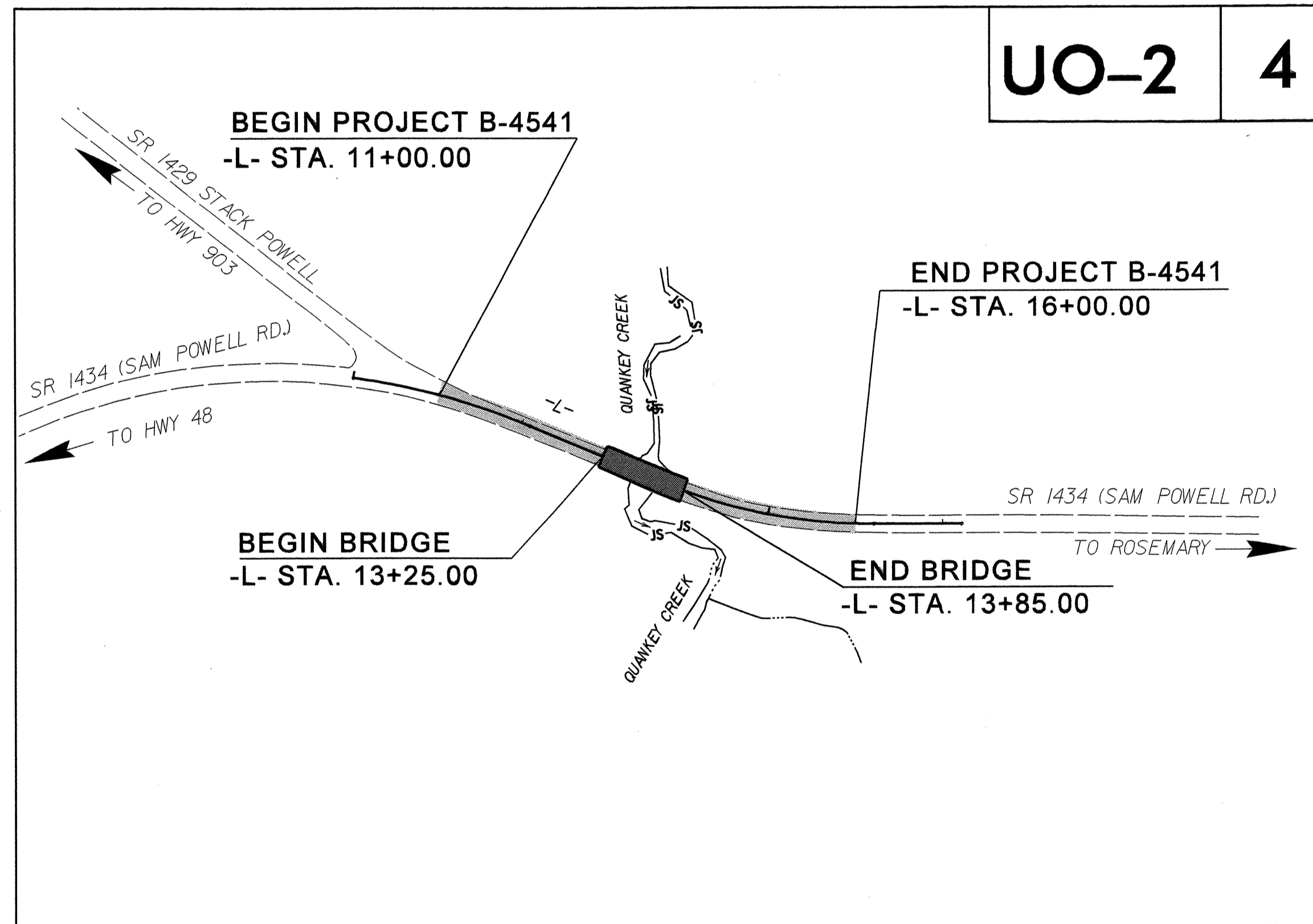
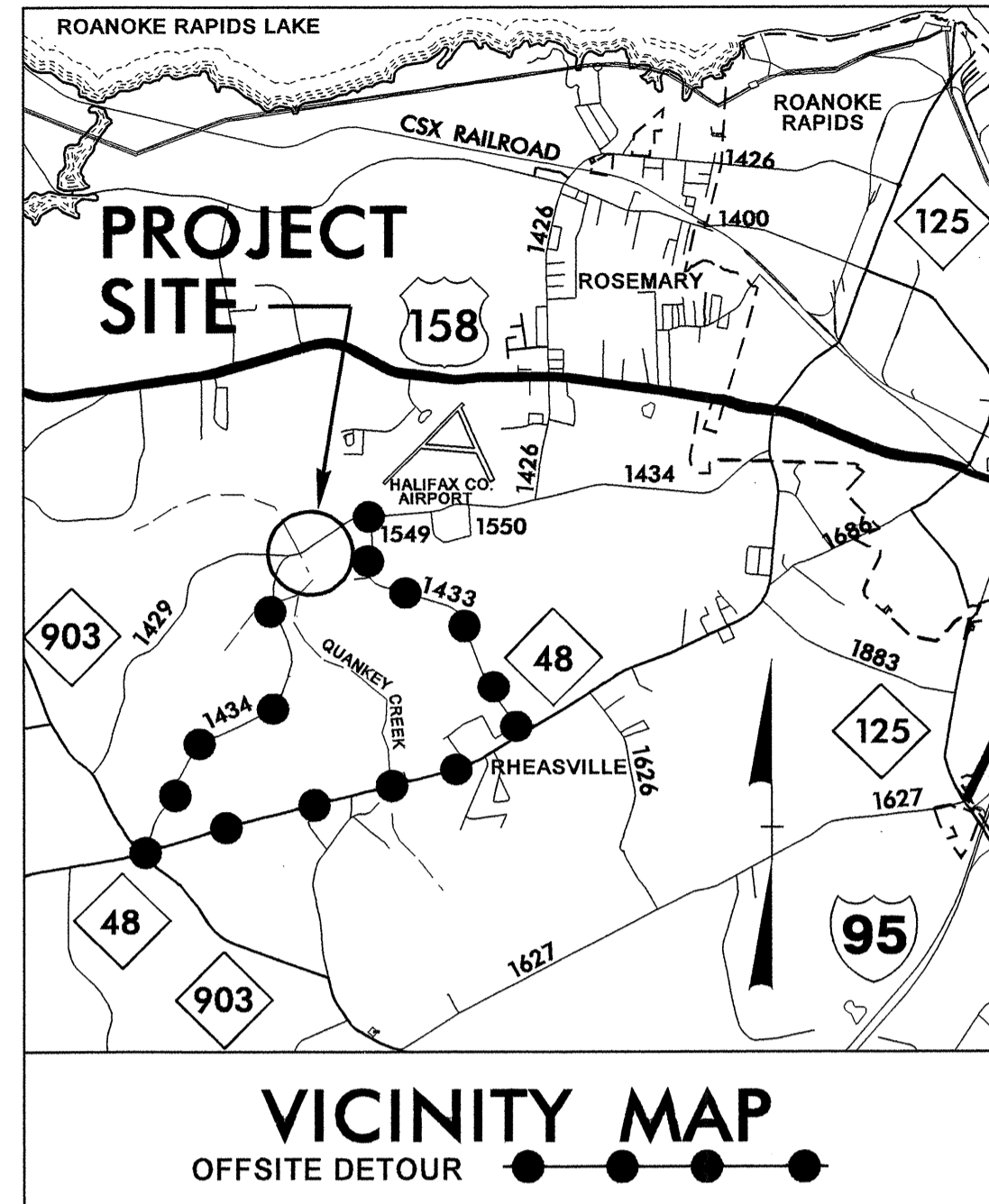


T.I.P. NO.	SHEET NO.
B-4541	UO-1

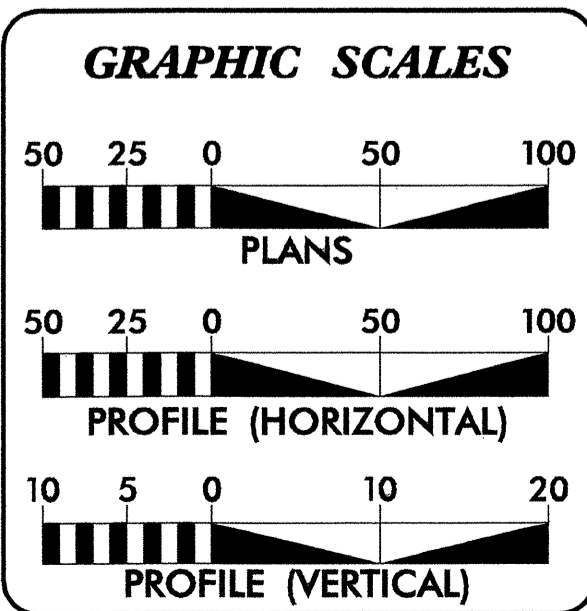
STATE OF NORTH CAROLINA  
DIVISION OF HIGHWAYS

**UTILITIES BY OTHERS PLANS  
HALIFAX COUNTY**

**LOCATION: BRIDGE No. 24 ON SR 1434  
(SAM POWELL RD.) OVER QUANKEY CREEK**  
**TYPE OF WORK: UTILITY**



TIP PROJECT: B-4541



**INDEX OF SHEETS**

SHEET NO.	DESCRIPTION
UO-1	TITLE SHEET
UO-2	UTILITIES BY OTHERS PLAN SHEETS

**UTILITY OWNERS ON PROJECT**

- Dominion NC Power
- Embarq

PREPARED IN THE OFFICE OF:  
**DIVISION OF HIGHWAYS  
UTILITIES ENGINEERING  
SECTION**

1591 MAIL SERVICES CENTER  
RALEIGH NC 27699-1591  
PHONE (919) 250-4128  
FAX (919) 250-4119

**Roger Worthington, P.E.** UTILITIES SECTION ENGINEER  
**Steve McKee, P.E.** UTILITIES SQUAD LEADER PROJECT ENGINEER  
**Jamshid Hafshejani** UTILITIES PROJECT DESIGNER

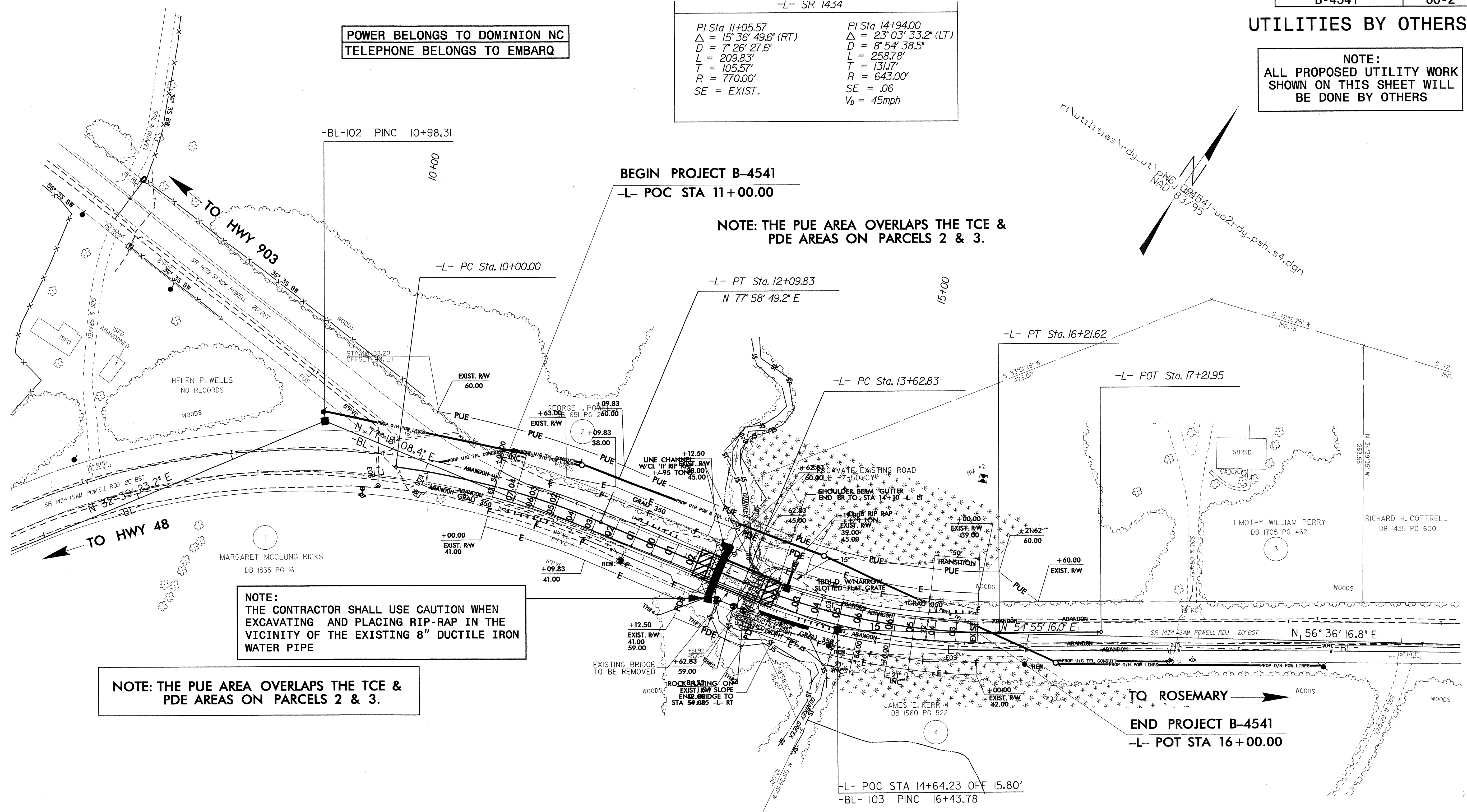
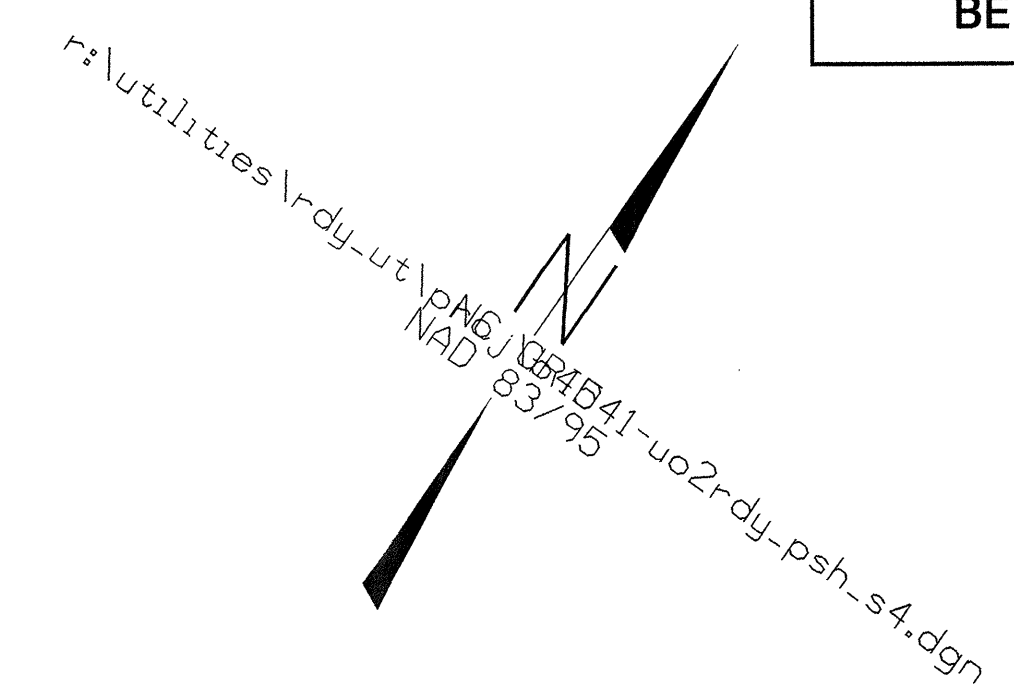
27-JUL-2009 08:49 \\ut\it\p\ss\c\l\ut\proj\b4541\uo1\rdy\_tsh.dgn \$\$\$USER\$\$\$

### UTILITIES BY OTHERS

**NOTE:**  
ALL PROPOSED UTILITY WORK  
SHOWN ON THIS SHEET WILL  
BE DONE BY OTHERS

-L- SR 1434	
PI Sta 11+05.57 Δ = 15° 36' 49.6" (RT) D = 7' 26' 27.6" L = 209.83' T = 105.57' R = 770.00' SE = EXIST.	PI Sta 14+94.00 Δ = 23° 03' 33.2" (LT) D = 8' 54' 38.5" L = 258.78' T = 131.17' R = 643.00' SE = .06 V <sub>0</sub> = 45mph

**POWER BELONGS TO DOMINION NC  
TELEPHONE BELONGS TO EMBARQ**



**NOTE: THE PUE AREA OVERLAPS THE TCE & PDE AREAS ON PARCELS 2 & 3.**

**NOTE:**  
THE CONTRACTOR SHALL USE CAUTION WHEN  
EXCAVATING AND PLACING RIP-RAP IN THE  
VICINITY OF THE EXISTING 8" DUCTILE IRON  
WATER PIPE

**NOTE: THE PUE AREA OVERLAPS THE TCE & PDE AREAS ON PARCELS 2 & 3.**

**END PROJECT B-4541  
-L- POT STA 16+00.00**

REVISIONS

SEE SHEET 5 FOR -L- PROFILE  
SEE SHEET S-1 THRU S- FOR STRUCTURE PLANS

27-JUL-2008 08:48  
 F:\4541\B4541-U02\dy-psh-s4.dgn