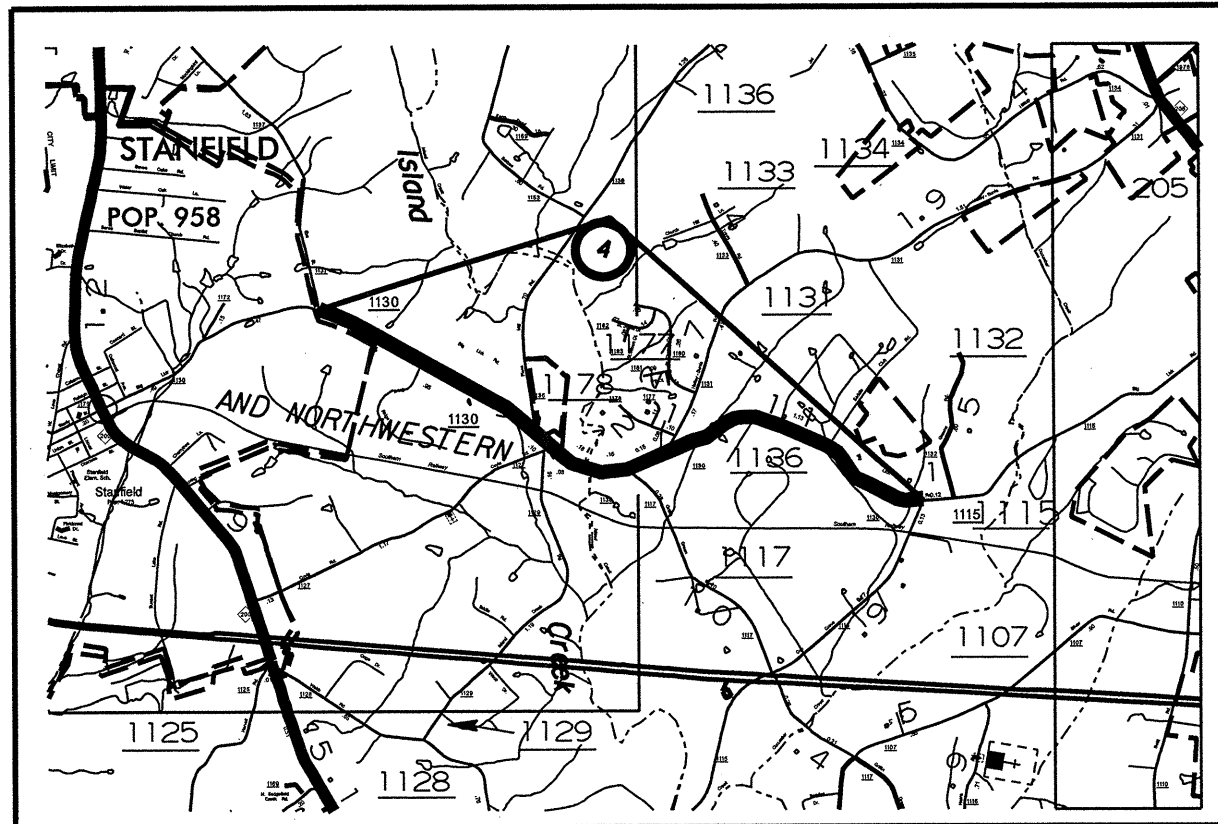
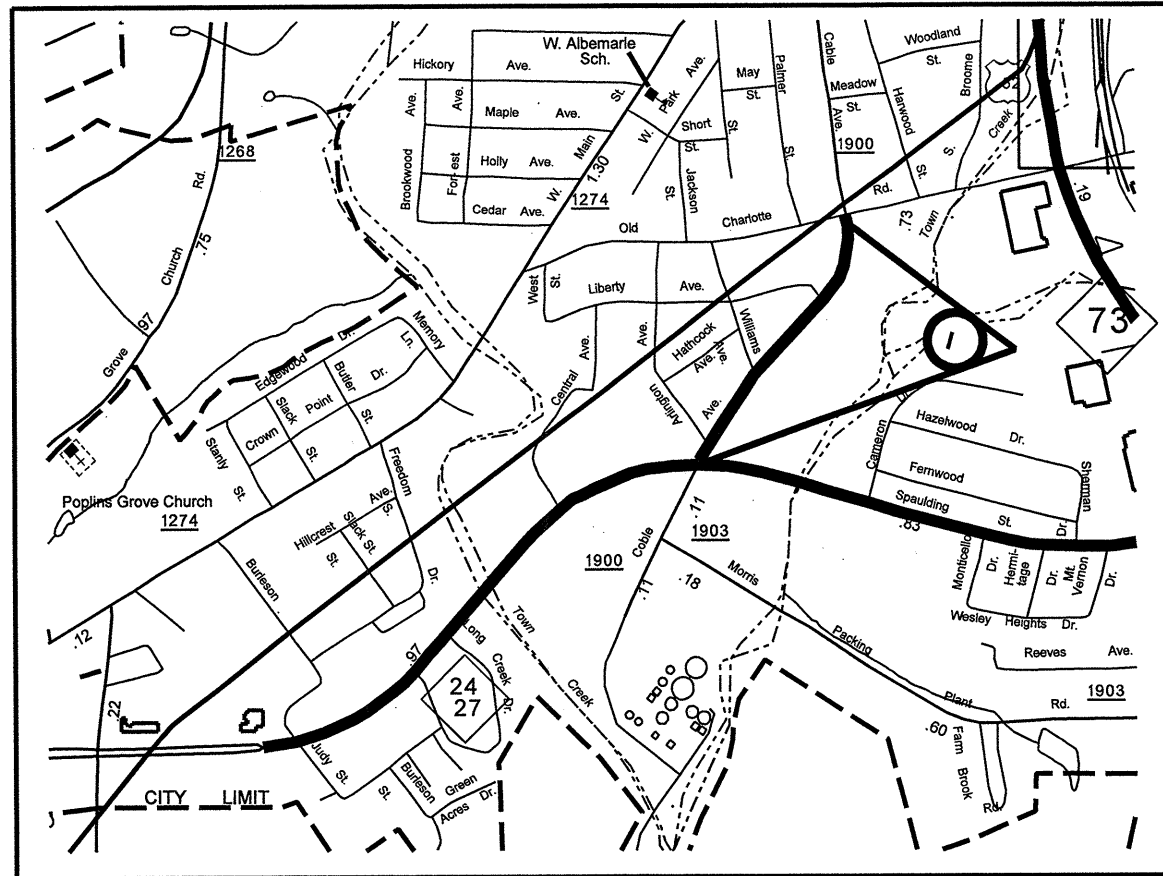


| | | | |
|------------------|----------------------|-----------|--------------|
| STATE | PROJECT NO. | SHEET NO. | TOTAL SHEETS |
| N.C. | 10CR.2084L20 ETC. | 1 | |
| F.A. PROJECT NO. | | | |



ENLARGED MUNICIPAL AND SUBURBAN AREAS

STANLY COUNTY

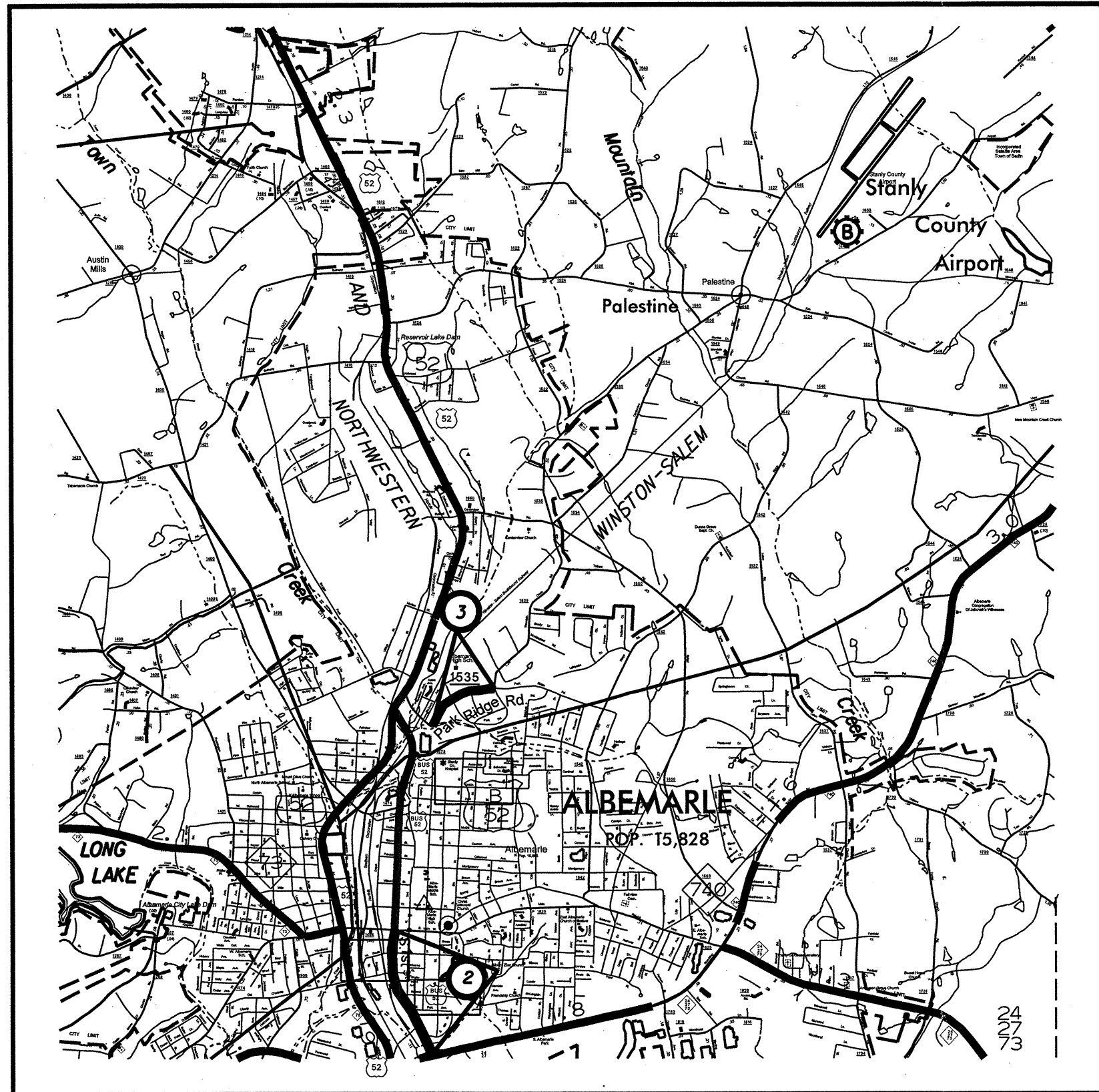
NORTH CAROLINA

PREPARED BY THE
NORTH CAROLINA DEPARTMENT OF TRANSPORTATION
DIVISION OF HIGHWAYS - GIS UNIT

IN COOPERATION WITH THE
U.S. DEPARTMENT OF TRANSPORTATION
FEDERAL HIGHWAY ADMINISTRATION

| MAP # | ROUTE | DESCRIPTION |
|-------|--------------------------|---|
| 1 | SR 1900 (COBLE AVE) | FROM NC 24/27 TO OLD CHARLOTTE RD |
| 2 | US 52 BUS (FIRST STREET) | FROM SR 1494 (W MAIN STREET) TO PAVEMENT JOINT NORTH MONO ISLANDS |
| 3 | SR 1535 (PARK RIDGE RD) | FROM SR 1573 NORTH SECOND STREET TO SR 1535 (MOUNTAIN CREEK ROAD) |
| 4 | SR 1130 (BIG LICK RD) | FROM SR 1115 (BIG LICK ROAD) TO EAST CITY LIMITS OF STANFIELD |
| 5 | SR 1214 (AUSTIN RD) | FROM SR 1227 (RIDGECREST ROAD) TO SR 1200 (BETHEL CHURCH ROAD) |

| | | | |
|------------------|-----------------------|-----------|--------------|
| STATE | PROJECT NO. | SHEET NO. | TOTAL SHEETS |
| N.C. | 10CR.20841.20 ETC. | 2 | |
| F.A. PROJECT NO. | | | |



ENLARGED MUNICIPAL AND SUBURBAN AREAS

STANLY COUNTY

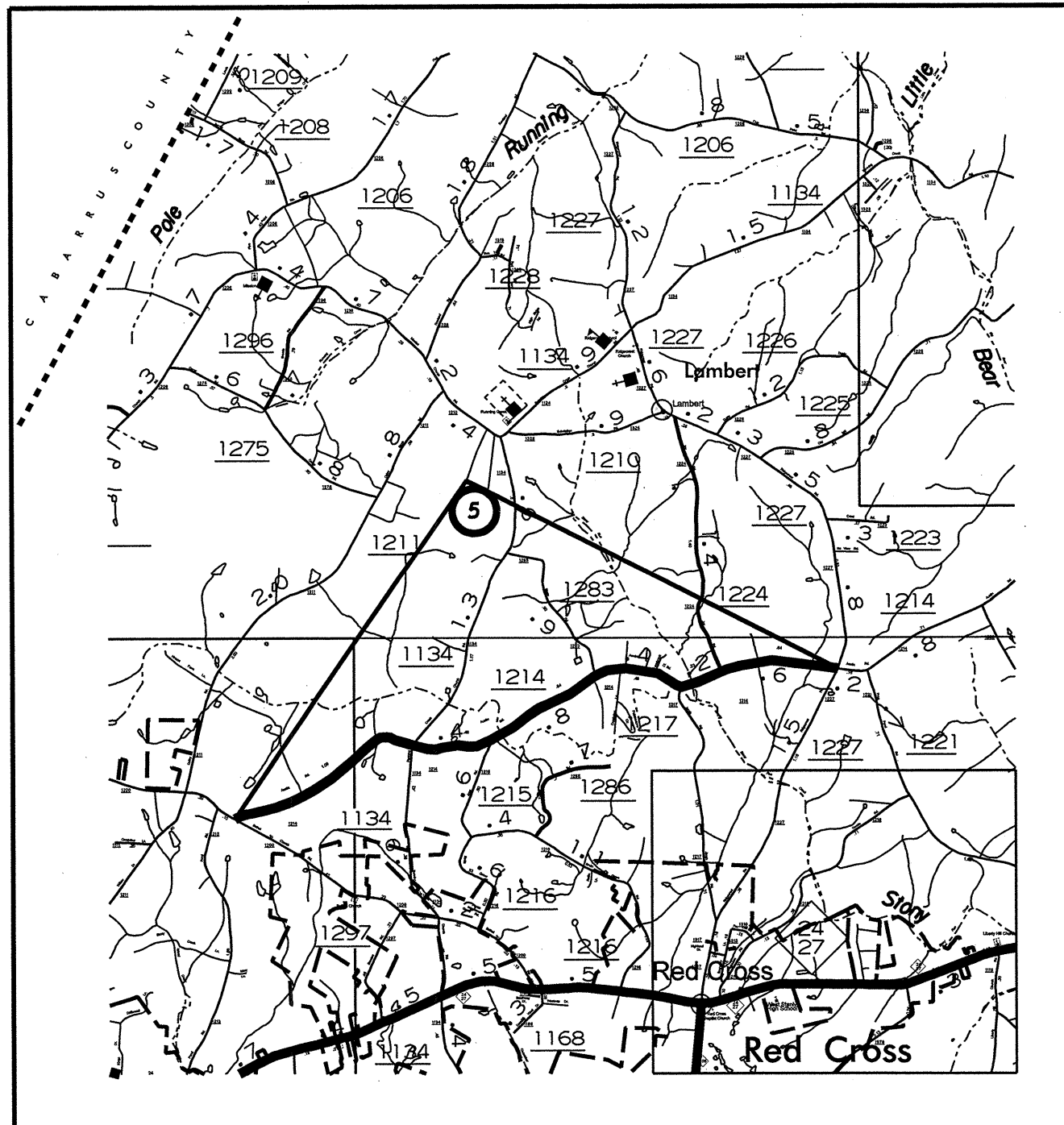
NORTH CAROLINA

PREPARED BY THE
NORTH CAROLINA DEPARTMENT OF TRANSPORTATION
DIVISION OF HIGHWAYS - GIS UNIT

IN COOPERATION WITH THE
U.S. DEPARTMENT OF TRANSPORTATION
FEDERAL HIGHWAY ADMINISTRATION

| MAP # | ROUTE | DESCRIPTION |
|-------|--------------------------|---|
| 1 | SR 1900 (COBLE AVE) | FROM NC 24/27 TO OLD CHARLOTTE RD |
| 2 | US 52 BUS (FIRST STREET) | FROM SR 1494 (W MAIN STREET) TO PAVEMENT JOINT NORTH MONO ISLANDS |
| 3 | SR 1535 (PARK RIDGE RD) | FROM SR 1573 NORTH SECOND STREET TO SR 1535 (MOUNTAIN CREEK ROAD) |
| 4 | SR 1130 (BIG LICK RD) | FROM SR 1115 (BIG LICK ROAD) TO EAST CITY LIMITS OF STANFIELD |
| 5 | SR 1214 (AUSTIN RD) | FROM SR 1227 (RIDGECREST ROAD) TO SR 1200 (BETHEL CHURCH ROAD) |

| | | | |
|------------------|----------------------|-----------|--------------|
| STATE | PROJECT NO. | SHEET NO. | TOTAL SHEETS |
| N.C. | 10CR.2084L20 ETC. | 3 | |
| F.A. PROJECT NO. | | | |



ENLARGED MUNICIPAL AND SUBURBAN AREAS

STANLY COUNTY

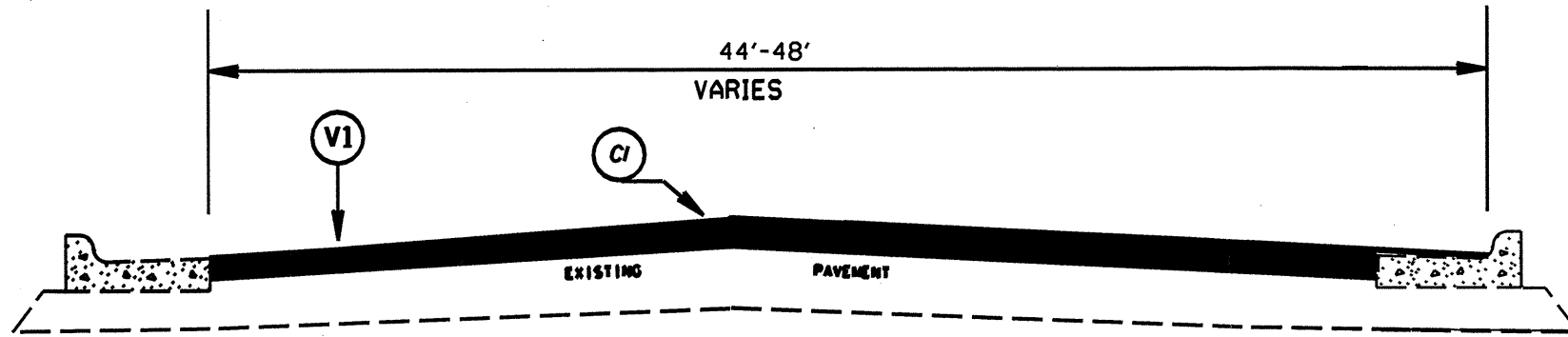
NORTH CAROLINA

PREPARED BY THE
NORTH CAROLINA DEPARTMENT OF TRANSPORTATION
DIVISION OF HIGHWAYS - GIS UNIT

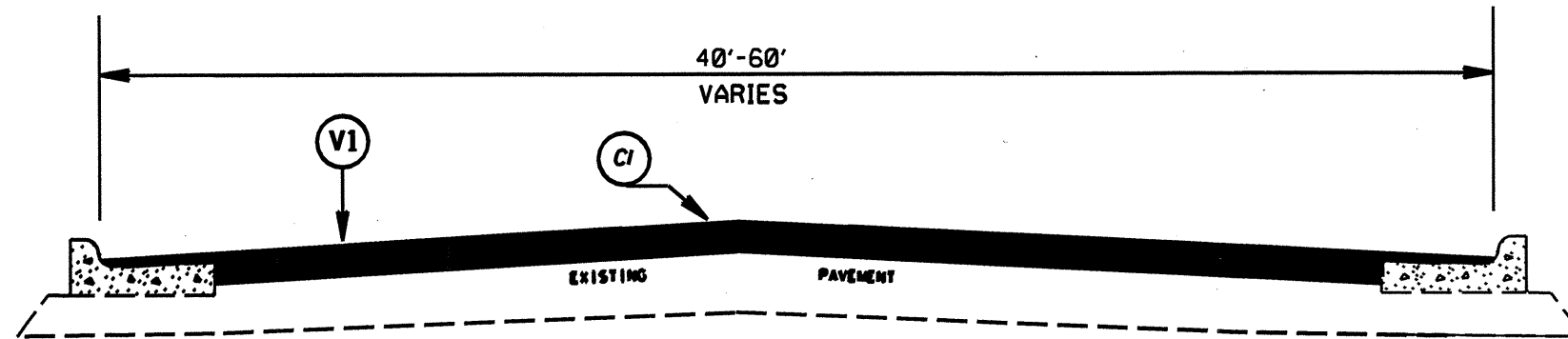
IN COOPERATION WITH THE
U.S. DEPARTMENT OF TRANSPORTATION
FEDERAL HIGHWAY ADMINISTRATION

| MAP # | ROUTE | DESCRIPTION |
|-------|--------------------------|---|
| 1 | SR 1900 (COBLE AVE) | FROM NC 24/27 TO OLD CHARLOTTE RD |
| 2 | US 52 BUS (FIRST STREET) | FROM SR 1494 (W MAIN STREET) TO PAVEMENT JOINT NORTH MONO ISLANDS |
| 3 | SR 1535 (PARK RIDGE RD) | FROM SR 1573 NORTH SECOND STREET TO SR 1535 (MOUNTAIN CREEK ROAD) |
| 4 | SR 1130 (BIG LICK RD) | FROM SR 1115 (BIG LICK ROAD) TO EAST CITY LIMITS OF STANFIELD |
| 5 | SR 1214 (AUSTIN RD) | FROM SR 1227 (RIDGECREST ROAD) TO SR 1200 (BETHEL CHURCH ROAD) |

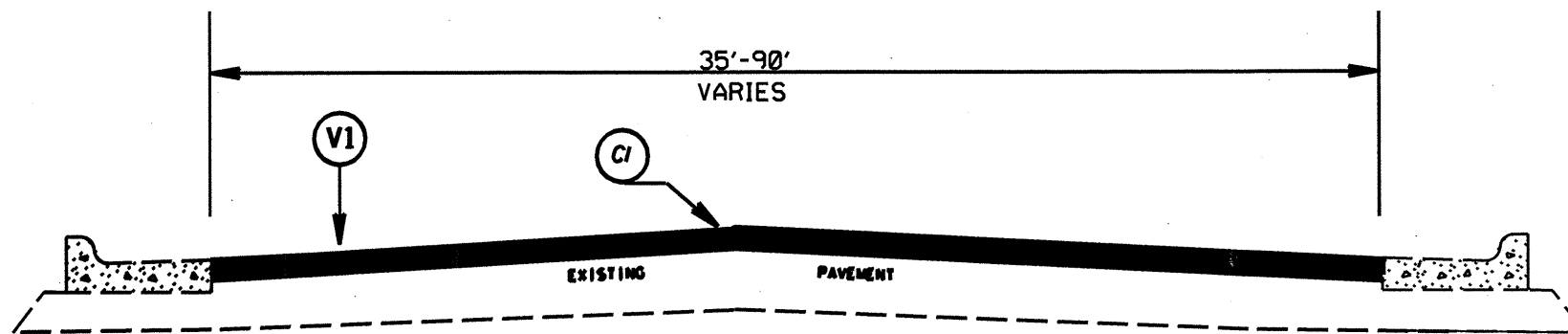
| | | | |
|------------------|-----------------------|-----------|--------------|
| STATE | PROJECT NO. | SHEET NO. | TOTAL SHEETS |
| N.C. | 10CR.20841.20 ETC. | 4 | |
| F.A. PROJECT NO. | | | |



TYPICAL SECTION NO. 3

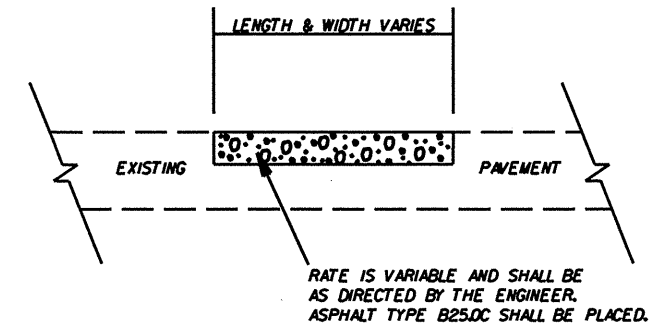


TYPICAL SECTION NO. 2



TYPICAL SECTION NO. 1

PATCHING DETAIL



| PAVEMENT SCHEDULE | |
|-------------------|--|
| C1 | PROP. APPROX. 1.5" ASPHALT CONCRETE SURFACE COURSE, TYPE S9.5B, AT AN AVERAGE RATE OF 168 LBS. PER SQ. YD. |
| E1 | PROP. APPROX. 8.0" ASPHALT CONCRETE BASE COURSE, TYPE B25.0B, AT AN AVERAGE RATE OF 456 LBS. PER SQ. YD. IN EACH OF TWO LAYERS |
| V1 | MILLING BITUMINOUS PAVEMENT. 1.5" DEPTH. |

STANLY COUNTY
RESURFACING 2009

SCALE -NA-
DATE 7/09
DWC. BY JDA
DESIGN BY JDA
APPROVED MPM



| REVISIONS |
|-----------|
| |
| |
| |

std dwgs and gen notes.Txt

| | | | |
|------------------|-----------------------|-----------|--------------|
| STATE | PROJECT NO. | SHEET NO. | TOTAL SHEETS |
| N.C. | 10CR.2084I.20 ETC. | 5 | |
| F.A. PROJECT NO. | | | |

EFF. 07-18-06

REV. 01-02-07
2006 ROADWAY ENGLISH STANDARD DRAWINGS

The following Roadway Standards as appear in "Roadway Standard Drawings" Highway Design Branch - N. C. Department of Transportation - Raleigh, N. C., Dated July 18, 2006 are applicable to this project and by reference hereby are considered a part of these plans:

| STD. NO. | TITLE |
|--------------------------|---|
| DIVISION 8 - INCIDENTALS | |
| 848.05 | Wheelchair Ramp - Curb Cut |
| 848.06 | Wheelchair Ramp - Retrofitting of Existing Curb |

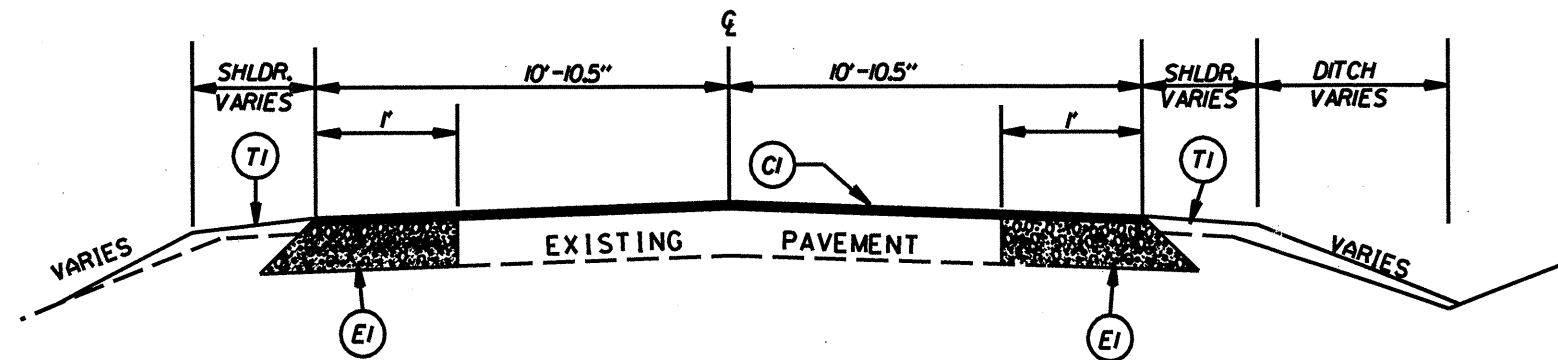
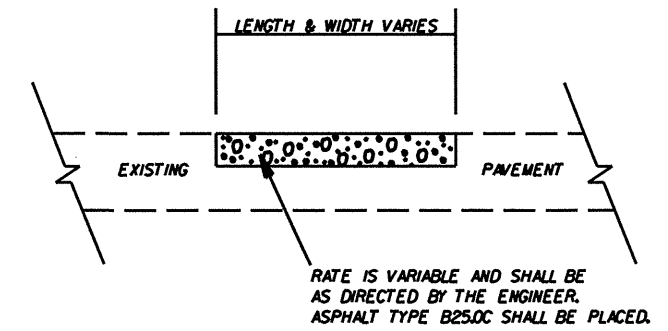
GENERAL NOTES:

2006 SPECIFICATIONS
EFFECTIVE: 07-18-06
REVISED: 07-30-08

WHEELCHAIR RAMPS:

848.06 WHEELCHAIR RAMPS ARE SHOWN ON THE PLANS AT APPROXIMATE LOCATIONS. THE CONSTRUCTION OF ALL WHEELCHAIR RAMPS SHALL BE IN ACCORDANCE WITH STD. NO.

PATCHING DETAIL



TYPICAL SECTION NO. 4

| PAVEMENT SCHEDULE | |
|-------------------|--|
| C1 | PROP. APPROX. 1.5" ASPHALT CONCRETE SURFACE COURSE, TYPE S9.5B, AT AN AVERAGE RATE OF 168 LBS. PER SQ. YD. |
| E1 | PROP. APPROX. 8.0" ASPHALT CONCRETE BASE COURSE, TYPE B25.0B, AT AN AVERAGE RATE OF 456 LBS. PER SQ. YD. IN EACH OF TWO LAYERS |
| T1 | SHOULDER CONSTRUCTION |

STANLY COUNTY
RESURFACING 2009

| | | | | |
|-----------|------|--|-----------|--|
| SCALE | -NA- | | REVISIONS | |
| DATE | 7/09 | | | |
| DWG. BY | JDA | | | |
| DESIGN BY | JDA | | | |
| APPROVED | MPH | | | |

| | | |
|---|-----------|-----------|
| PROJECT NO. | SHEET NO. | TOTAL NO. |
| 10CR.20841.20, 10CR.20841.21 10CR.20841.22, ETC. | 6 | |

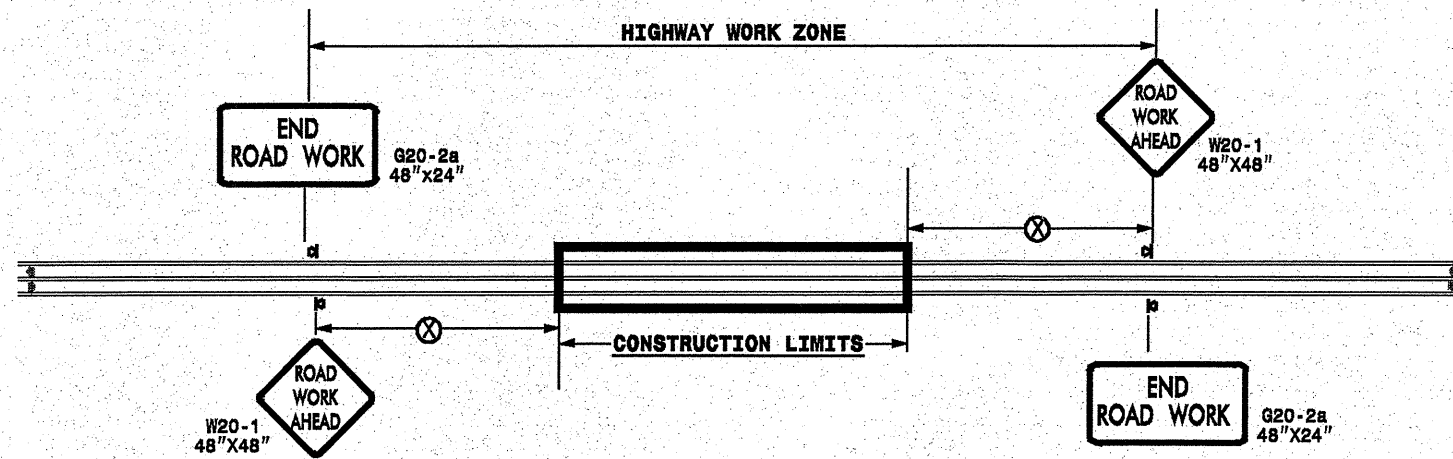
SUMMARY OF QUANTITIES

| PROJECT NO | COUNTY | MAP NO | ROUTE | DESCRIPTION | TYP NO | FINAL SURFACE TESTING REQUIRED | LENGTH MI | WIDTH FT | INCIDENTAL STONE BASE TONS | SHOULDER CONSTRUCTION SMI | DITCHING LF | 1 1/2" MILLING SY | INCIDENTAL MILLING SY | BASE COURSE, B25.0B TONS | SURFACE COURSE, S9.5B TONS | LEVELING COURSE, S9.5B TONS | PG 64-22 PLANT MIX TONS | PATCHING EXISTING PAVEMENT TONS | RETROFIT EXISTING WHEEL CHAIR RAMPS EA | CONCRETE WHEEL CHAIR RAMPS EA | 6" DRIVEWAYS SY | TEMPORARY SILT FENCE LF | STONE FOR EROSION CONTROL, CLASS R TON | SEDIMENT CONTROL STONE TON | SEED & MULCHING AC | | |
|----------------------------------|--------|--------|--------------------------|--|--------|--------------------------------|-----------|----------|----------------------------|---------------------------|-------------|-------------------|-----------------------|--------------------------|----------------------------|-----------------------------|-------------------------|---------------------------------|--|-------------------------------|-----------------|-------------------------|--|----------------------------|--------------------|------|------|
| 10CR.20841.20 | Stanly | 1 | SR 1900 (COBLE AVE.) | FROM NC 24/27 TO OLD CHARLOTTE RD. | 1 | NO | 0.4 | 36 | | | | 10,325 | | | 966 | | 58 | 147 | | | | | | | | | |
| TOTAL FOR MAP NO. 1 | | | | | | | 0.4 | | | | | 10,325 | | | 966 | | 58 | 147 | | | | | | | | | |
| TOTAL FOR PROJ NO. 10CR.20841.20 | | | | | | | 0.4 | | | | | 10,325 | | | 966 | | 58 | 147 | | | | | | | | | |
| 10CR.20841.21 | Stanly | 2 | US 52 BUS. (FIRST ST.) | FROM SR 1494 (W. MAIN ST.) TO PAVEMENT JOINT N. 24/27 | 1,2,3 | NO | 0.68 | 44 | | | | 17,553 | | | 1,553 | 100 | 100 | 238 | 5 | 10 | | | | | | | |
| TOTAL FOR MAP NO. 2 | | | | | | | 0.68 | | | | | 17,553 | | | 1,553 | 100 | 100 | 238 | 5 | 10 | | | | | | | |
| TOTAL FOR PROJ NO. 10CR.20841.21 | | | | | | | 0.68 | | | | | 17,553 | | | 1,553 | 100 | 100 | 238 | 5 | 10 | | | | | | | |
| 10CR.20841.22 | Stanly | 3 | SR 1535 (PARK RIDGE RD.) | SR 1573 (N SECOND ST.) TO SR 1535 (MOUNTAIN CRK. RD.) | 1 | NO | 0.5 | 40 | 25 | | | 11,733 | | | 1,064 | | 64 | 125 | | | | | | | | | |
| TOTAL FOR MAP NO. 3 | | | | | | | 0.5 | | | 25 | | 11,733 | | | 1,064 | | 64 | 125 | | | | | | | | | |
| TOTAL FOR PROJ NO. 10CR.20841.22 | | | | | | | 0.5 | | | 25 | | 11,733 | | | 1,064 | | 64 | 125 | | | | | | | | | |
| 10CR.20841.23 | Stanly | 4 | SR 1130 (BIG LICK RD.) | FROM SR 1115 (BIG LICK RD.) TO ECL OF STANFIELD | 4 | NO | 2.71 | 20 | 269 | 5.42 | 400 | | 270 | 2,187 | 2,980 | 525 | 307 | 981 | | | | | | | 6.60 | | |
| TOTAL FOR MAP NO. 4 | | | | | | | 2.71 | | | 269 | 5.42 | 400 | | 270 | 2,187 | 2,980 | 525 | 307 | 981 | | | | | | | 6.60 | |
| TOTAL FOR PROJ NO. 10CR.20841.23 | | | | | | | 2.71 | | | 269 | 5.42 | 400 | | 270 | 2,187 | 2,980 | 525 | 307 | 981 | | | | | | | | 6.60 |
| 10CR.20841.24 | Stanly | 5 | SR 1214 (AUSTIN RD) | FROM SR 1227 (RIDGECREST RD) TO SR 1200 (BETHEL CH RD) | 4 | NO | 3.5 | 20 | 175 | 7 | 250 | | 170 | 2,647 | 3,802 | 875 | 399 | 875 | | | 66 | 100 | 5 | 50 | 8.50 | | |
| TOTAL FOR MAP NO. 5 | | | | | | | 3.5 | | | 175 | 7 | 250 | | 170 | 2,647 | 3,802 | 875 | 399 | 875 | | | 66 | 100 | 5 | 50 | 8.50 | |
| TOTAL FOR PROJ NO. 10CR.20841.24 | | | | | | | 3.5 | | | 175 | 7 | 250 | | 170 | 2,647 | 3,802 | 875 | 399 | 875 | | | 66 | 100 | 5 | 50 | 8.50 | |
| GRAND TOTAL | | | | | | | 7.79 | | 469 | 12.42 | 650 | 39,611 | 440 | 4,834 | 10,365 | 1,500 | 928 | 2,366 | 5 | 10 | 66 | 100 | 5 | 50 | 15.10 | | |

THERMOPLASTIC AND PAINT QUANTITIES

| PROJECT NO | COUNTY | MAP NO | ROUTE | DESCRIPTION | 4685000000-E | | 4686000000-E | | 4702000000-E | | 4710000000-E | | 4721000000-E | | | 4725000000-E | | 4810000000-E | | 4835000000-E | | 4840000000-N | | | 4845000000-N | | 4900000000-N | | | |
|----------------------------------|--------|--------|--------------------------|--|------------------------|--------------------------|-------------------------|--------------------------|--------------------------|-----------------------|-------------------------|----------------------|----------------------|----------------------------|-----------------------|-----------------|-----------------|----------------|------------------|----------------|----------------------|----------------|-----------------|-------------------------|-----------------------|-----|--------------|-----|-----|----|
| | | | | | 4" X 90 M WHITE THERMO | 4" X 120 M YELLOW THERMO | 4" X 120 M WHITE THERMO | 12" X 120 M WHITE THERMO | 24" X 120 M WHITE THERMO | THERMO MSG ONLY 120 M | THERMO MSG SCHOOL 120 M | THERMO RT ARROW 90 M | THERMO LT ARROW 90 M | THERMO STR & RT ARROW 90 M | THERMO STR ARROW 90 M | 4" YELLOW PAINT | 24" WHITE PAINT | PAINT MSG ONLY | PAINT MSG SCHOOL | PAINT LT ARROW | PAINT STR & RT ARROW | PAINT RT ARROW | PAINT STR ARROW | YELLOW & YELLOW MARKERS | CRYSTAL & RED MARKERS | | | | | |
| 10CR.20841.20 | Stanly | 1 | SR 1900 (COBLE AVE.) | FROM NC 24/27 TO OLD CHARLOTTE RD. | 845 | 4,224 | 300 | | 75 | | | | | | | | | | | | | | | | | | | | 53 | 16 |
| TOTAL FOR MAP NO. 1 | | | | | 845 | 4,224 | 300 | | 75 | | | | | | | | | | | | | | | | | | | | 53 | 16 |
| TOTAL FOR PROJ NO. 10CR.20841.20 | | | | | 845 | 4,224 | 300 | | 75 | | | | | | | | | | | | | | | | | | | | 53 | 16 |
| | | | | | | 4,524 | | | | | | | | 1 | | | | | | | | | | | | | | | 69 | |
| 10CR.20841.21 | Stanly | 2 | US 52 BUS. (FIRST ST.) | FROM SR 1494 (W. MAIN ST.) TO PAVEMENT JOINT N. 24/27 | 1,110 | 7,250 | 1,290 | 240 | 240 | 4 | | 5 | 14 | 4 | 2 | 8,976 | | 4 | | 14 | 4 | 5 | 2 | | | | | 60 | 60 | |
| TOTAL FOR MAP NO. 2 | | | | | 1,110 | 7,250 | 1,290 | 240 | 240 | 4 | | 5 | 14 | 4 | 2 | 8,976 | | 4 | | 14 | 4 | 5 | 2 | | | | 60 | 60 | | |
| TOTAL FOR PROJ NO. 10CR.20841.21 | | | | | 1,110 | 7,250 | 1,290 | 240 | 240 | 4 | | 5 | 14 | 4 | 2 | 8,976 | | 4 | | 14 | 4 | 5 | 2 | | | | 60 | 60 | | |
| | | | | | | 8,540 | | | | 4 | | 25 | | | | | | 4 | | 25 | | | | | | | | | 120 | |
| 10CR.20841.22 | Stanly | 3 | SR 1535 (PARK RIDGE RD.) | SR 1573 (N SECOND ST.) TO SR 1535 (MOUNTAIN CRK. RD.) | 200 | 2,640 | 400 | | 300 | | 12 | | | | | 6,600 | 100 | | | | | 12 | | | | | 40 | 10 | | |
| TOTAL FOR MAP NO. 3 | | | | | 200 | 2,640 | 400 | | 300 | | 12 | | | | | 6,600 | 100 | | | | | 12 | | | | | 40 | 10 | | |
| TOTAL FOR PROJ NO. 10CR.20841.22 | | | | | 200 | 2,640 | 400 | | 300 | | 12 | | | | | 6,600 | 100 | | | | | 12 | | | | | 40 | 10 | | |
| | | | | | | 3,040 | | | | 12 | | | | | | | | | | | 12 | | | | | | | | 50 | |
| 10CR.20841.23 | Stanly | 4 | SR 1130 (BIG LICK RD.) | FROM SR 1115 (BIG LICK RD.) TO ECL OF STANFIELD | 29,160 | 17,886 | | | | | | | | | | 17,886 | | | | | | | | | | | 180 | | | |
| TOTAL FOR MAP NO. 4 | | | | | 29,160 | 17,886 | | | | | | | | | | 17,886 | | | | | | | | | | | 180 | | | |
| TOTAL FOR PROJ NO. 10CR.20841.23 | | | | | 29,160 | 17,886 | | | | | | | | | | 17,886 | | | | | | | | | | | | 180 | | |
| | | | | | | 17,886 | | | | | | | | | | | | | | | | | | | | | | | 180 | |
| 10CR.20841.24 | Stanly | 5 | SR 1214 (AUSTIN RD) | FROM SR 1227 (RIDGECREST RD) TO SR 1200 (BETHEL CH RD) | 37,660 | 23,100 | | | | | | | | | | 46,200 | | | | | | | | | | | 231 | | | |
| TOTAL FOR MAP NO. 5 | | | | | 37,660 | 23,100 | | | | | | | | | | 46,200 | | | | | | | | | | | 231 | | | |
| TOTAL FOR PROJ NO. 10CR.20841.24 | | | | | 37,660 | 23,100 | | | | | | | | | | 46,200 | | | | | | | | | | | 231 | | | |
| | | | | | | 23,100 | | | | | | | | | | | | | | | | | | | | | | | 231 | |
| GRAND TOTAL | | | | | 68,975 | 55,100 | 1,990 | 240 | 615 | 4 | 12 | 6 | 14 | 4 | 2 | 79,662 | 100 | 4 | 12 | 14 | 4 | 5 | 2 | | | 564 | 86 | | | |
| | | | | | | 57,090 | | | | 16 | | 26 | | | | | | 16 | | 25 | | | | | | 650 | | | | |

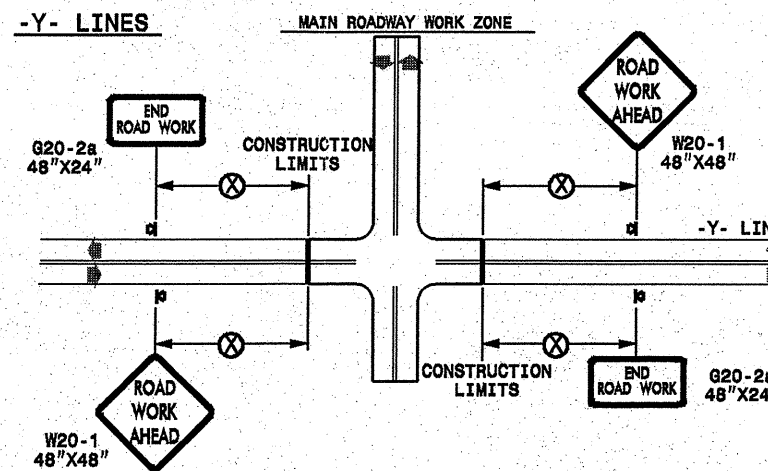
TWO-WAY UNDIVIDED ** (L-LINES)



| POSTED SPEED LIMIT (M.P.H.) | RECOMMENDED MINIMUM SIGN SPACING |
|-----------------------------|----------------------------------|
| ≤ 50 | 500' |
| ≥ 55 | 1000' |

STATE OF NORTH CAROLINA
DEPT. OF TRANSPORTATION
DIVISION OF HIGHWAYS
RALEIGH, N.C.

ROADWAYS INTERSECTING ALONG 2 WAY UNDIVIDED WORK ZONE (Y-LINES)



GENERAL NOTES

- USE FLUORESCENT ORANGE SHEETING (TYPE VII OR HIGHER) ON ALL ADVANCE WORK ZONE SIGNS.
- DO NOT INSTALL ADVANCE WARNING SIGNS MORE THAN 3 DAYS PRIOR TO BEGINNING OF WORK.
- ALL SIGN SPACING DIMENSIONS ARE APPROXIMATE, FIELD ADJUST AS NECESSARY OR AS DIRECTED.
- USE PORTABLE WORK ZONE SIGNS ONLY WITH PORTABLE WORK ZONE SIGN STANDS SPECIFICALLY DESIGNED FOR ONE ANOTHER. PORTABLE WORK ZONE SIGNS MAY BE ROLL UP OR APPROVED COMPOSITE.
- PROVIDE PORTABLE WORK ZONE SIGN STANDS, PORTABLE SIGNS AND SIGN SHEETING WHICH ARE LISTED ON THE NORTH CAROLINA DEPARTMENT OF TRANSPORTATION'S APPROVED PRODUCT LIST OR ACCEPTED AS TRAFFIC QUALIFIED BY THE TRAFFIC CONTROL UNIT.
- ** TWO-WAY UNDIVIDED ADVANCE WARNING SIGN CONFIGURATION MAY BE USED ON URBAN MULTI-LANE FACILITIES WHERE CONDITIONS LIMIT THE USE OF DUAL MOUNTED SIGNS AS DETERMINED BY THE ENGINEER.

LEGEND

- ◀ PORTABLE SIGN
- ➡ DIRECTION OF TRAFFIC FLOW

SHEET 1 OF 1

DETAIL DRAWING
FOR TWO-WAY UNDIVIDED
WORK ZONE WARNING SIGNS

| | | | |
|--------------------|------------------|---|-------------|
| APPROVED: _____ | DATE: _____ | DETAIL DRAWING FOR TWO-WAY UNDIVIDED ADVANCED WORK ZONE WARNING SIGNS | |
| SEAL | SCALE: NONE | | REVISIONS |
| | DATE: _____ | | 7-98 10/01 |
| | DWG. BY: _____ | | 10-98 03/04 |
| | DESIGN BY: _____ | | 01/01 11/04 |
| REVIEWED BY: _____ | | | DATE: _____ |

31-AUG-2009 15:56
 s:\signing\resur_facing\030509\resur_facing\030509.dwg
 p:\pseymore AT #ZTC237602