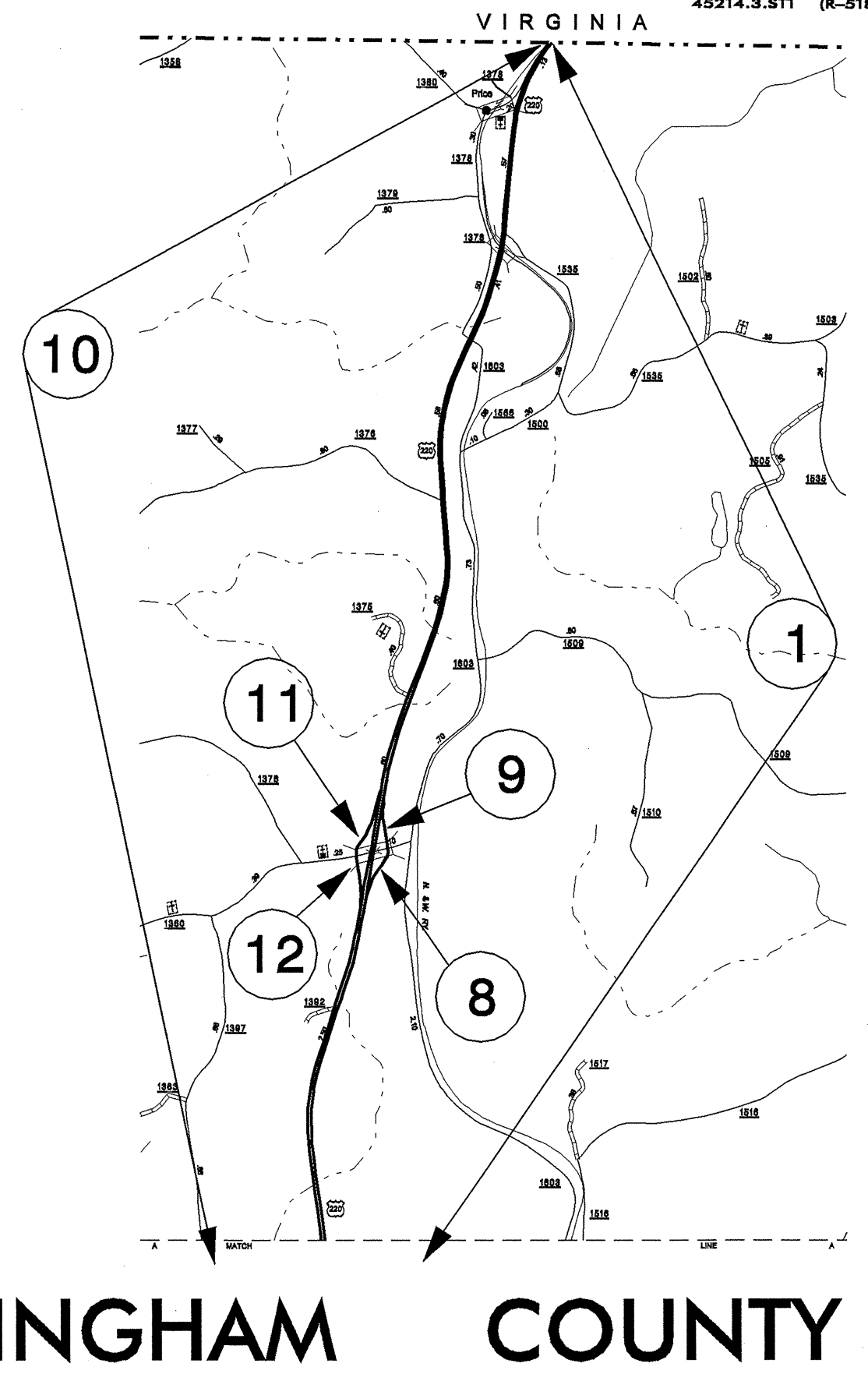
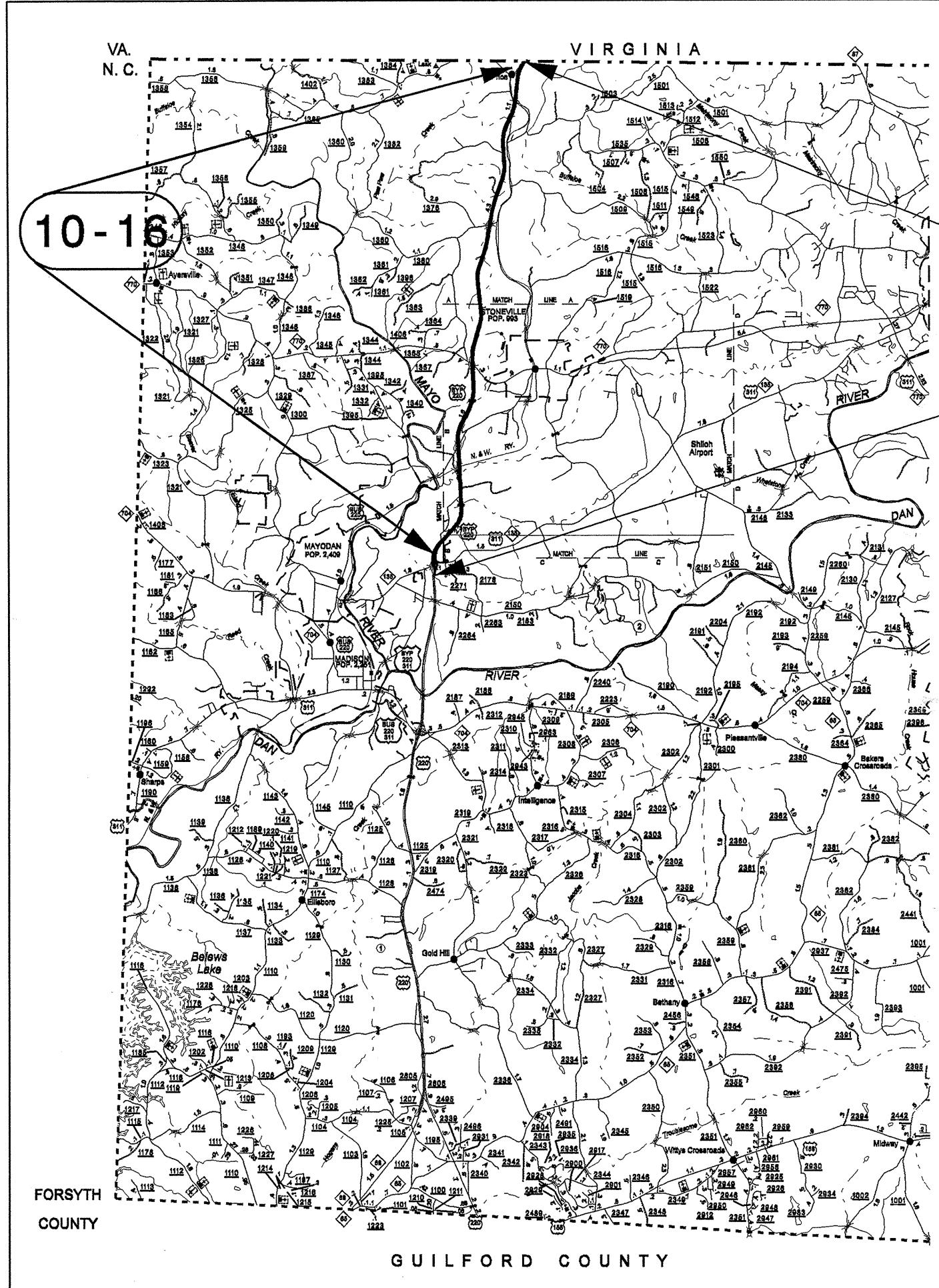


STATE	PROJECT NO.	SHEET NO.	TOTAL SHEETS
N.C.	R-5179A & R-5180	1	9
F.A. PROJ. NO. STM-0220(41) & STM-0220(39)			
		45213.3.ST1	(R-5179A)
		45214.3.ST1	(R-5180)

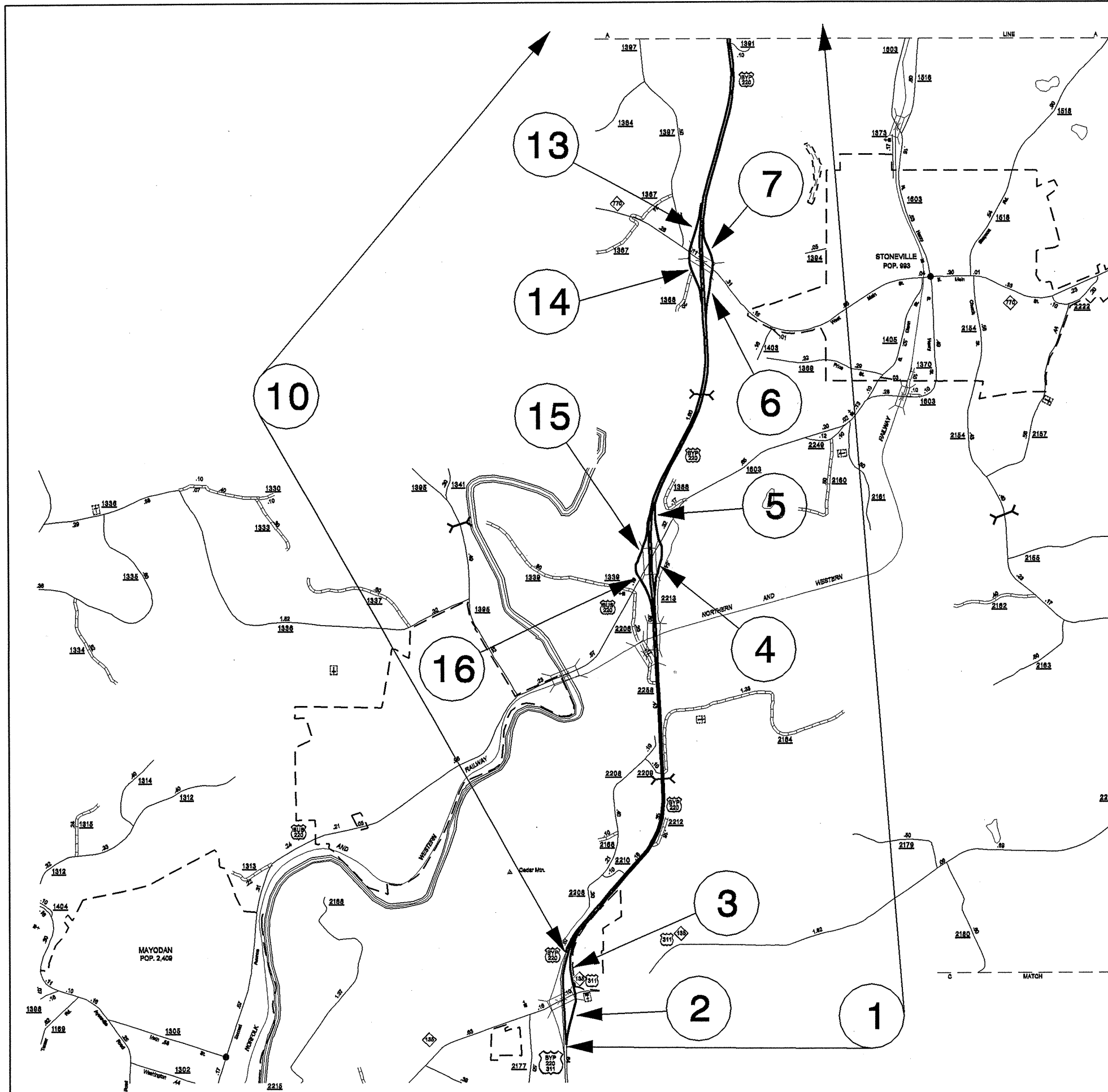


ROCKINGHAM COUNTY

STATE	PROJECT NO.	SHEET NO.	TOTAL SHEETS
N.C.	R-5179A & R-5180	2	9
F.A. PROJ. NO. STM-0220(41) & STM-0220(39)			

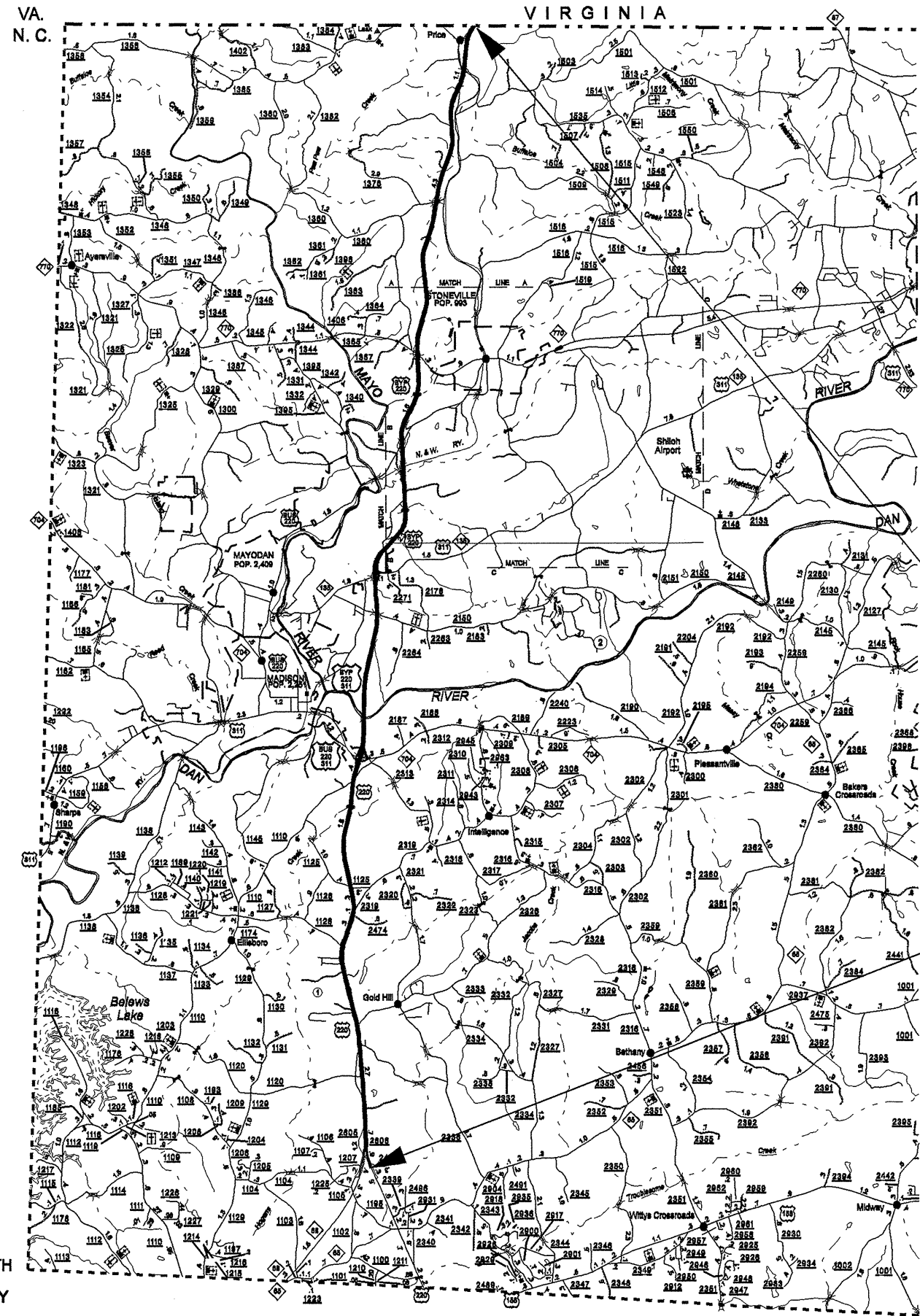
45213.3.ST1 (R-5179A)
45214.3.ST1 (R-5180)

ROCKINGHAM COUNTY



STATE	PROJECT NO.	SHEET NO.	TOTAL SHEETS
N.C.	R-5179A & R-5180	3	9
F.A. PROJ. NO. STM-0220(41) & STM-0220(39)			

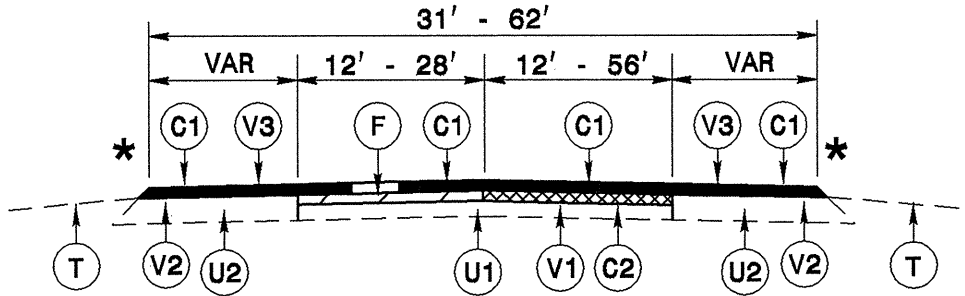
45213.3.ST1 (R-5179A)
45214.3.ST1 (R-5180)



ROCKINGHAM COUNTY

STATE	PROJECT NO.	SHEET NO.	TOTAL SHEETS
N.C.	R-5179A & R-5180	4	9

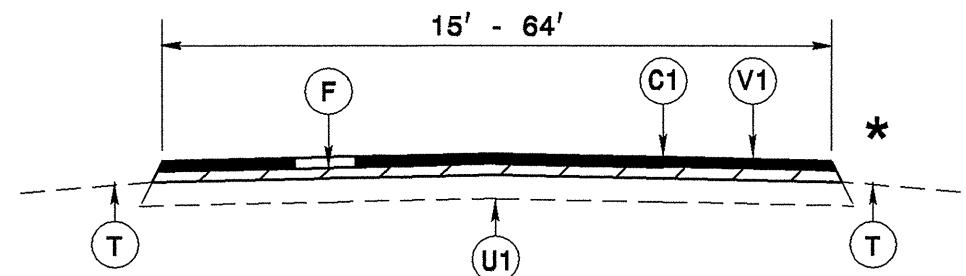
45213.3.ST1 (R-5179A)
45214.3.ST1 (R-5180)



NOTE: V1 - TO BE DONE IN RIGHT TRAVEL LANE ONLY
F - TO BE DONE IN LEFT TRAVEL LANE ONLY
* USE MILLING DETAIL 2 IN EXPRESSWAY GUTTER SECTIONS

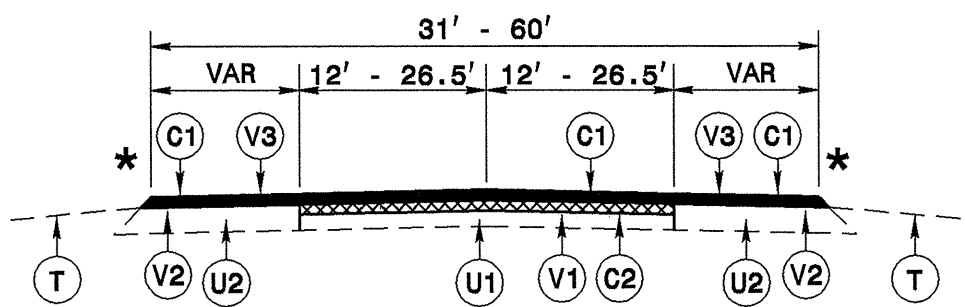
TYPICAL SECTION NO. 1

TO BE USED ON MAPS 1 & 10 AT THE FOLLOWING LOCATIONS:
 MAP 1: STA. 000+00 TO STA. 062+24
 MAP 10: STA. 177+60 TO STA. 189+08
 STA. 156+00 TO STA. 181+00
 STA. 388+50 TO STA. 457+00



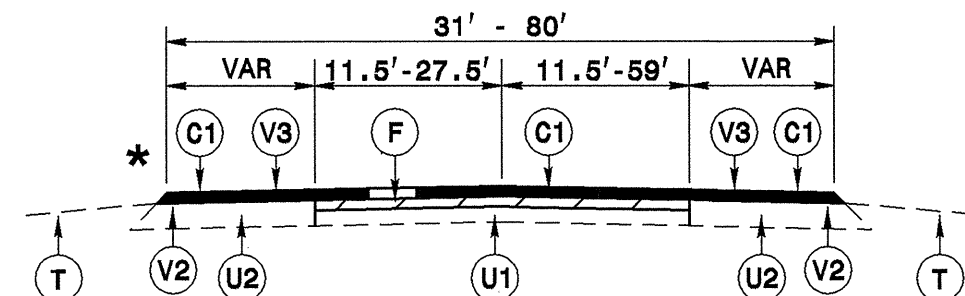
TO BE USED ON MAPS 2 - 9 AND MAPS 11 - 16
NOTE: * USE MILLING DETAIL 2 IN EXPRESSWAY GUTTER SECTIONS ONLY

TYPICAL SECTION NO. 4



* NOTE: USE MILLING DETAIL 2 IN EXPRESSWAY GUTTER SECTIONS
TO BE USED ON MAP 1 AT THE FOLLOWING LOCATIONS:
 STA. 062+24 TO STA. 105+00
 STA. 181+00 TO STA. 185+28

TYPICAL SECTION NO. 2

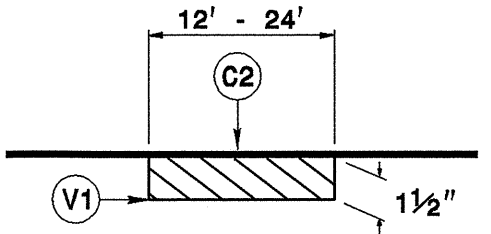


NOTE: F - TO BE DONE IN TRAVEL LANES ONLY
* USE MILLING DETAIL 2 IN EXPRESSWAY GUTTER SECTIONS

TYPICAL SECTION NO. 3

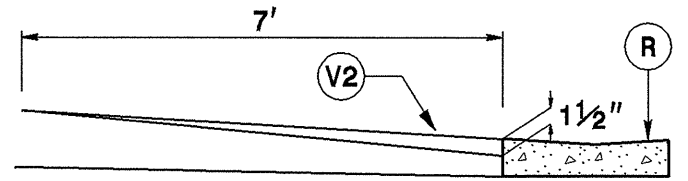
TO BE USED ON MAPS 1 & 10 AT THE FOLLOWING LOCATIONS:
 MAP 1: STA. 105+00 TO STA. 156+00
 MAP 10: STA. 000+00 TO STA. 177+60
 STA. 185+28 TO STA. 388+50
 STA. 457+00 TO STA. 491+00
 STA. 189+08 TO STA. 461+45

MILLING DETAIL 1



MILL EXISTING ASPHALT PAVEMENT 1 1/2" IN DEPTH AT THE FOLLOWING LOCATIONS:
 MAP 1
 STA 000+00 TO STA 105+00 RT. LANE
 STA 062+24 TO STA 105+00 LT. LANE
 STA 135+04 TO STA 136+00 BOTH LANES
 STA 156+00 TO STA 181+00 RT. LANE
 STA 181+00 TO STA 185+28 BOTH LANES
 STA 388+50 TO STA 457+00 RT. LANE
 NC 770 ON RAMP
 SR 1360 OFF RAMP
 TAPER OF US 220 OFF RAMP
 MAP 10
 STA 177+60 TO STA 189+08 RT. LANE
 MAPS 5, 7, 8, 9 & 16
 AS DIRECTED BY THE ENGINEER, TO BE DONE IN THE TRAVEL LANE PRIOR TO OTHER WORK ON THE MAP.

MILLING DETAIL 2



MILL EXISTING ASPHALT PAVEMENT 0-1 1/2" AT LOCATIONS AS DIRECTED BY THE ENGINEER
 NOTE:
 TO BE USED IN CONJUNCTION WITH
 TS. NO. 1 - 4 ON MAPS 1, 9, 10 AND 11

MAP 1
 STA 049+02 TO STA 056+82
 STA 075+73 TO STA 078+13
 STA 102+08 TO STA 111+07
 STA 115+29 TO STA 119+50
 STA 219+75 TO STA 229+75
 STA 240+05 TO STA 245+50
 STA 286+15 TO STA 291+25
 STA 306+85 TO STA 313+50
 STA 346+00 TO STA 351+00
 STA 356+35 TO STA 357+30
 STA 362+20 TO STA 363+20
 STA 365+95 TO STA 367+40
 STA 419+35 TO STA 421+30
 STA 427+05 TO STA 429+50
 STA 470+15 TO STA 475+30
 STA 487+80 TO STA 490+70
 MAP 9
 STA 005+30 TO STA 006+05
 MAP 10
 STA 026+60 TO STA 029+60
 STA 087+70 TO STA 089+20
 STA 095+20 TO STA 103+95
 STA 108+30 TO STA 110+05
 STA 123+65 TO STA 126+40
 STA 141+20 TO STA 145+60
 STA 159+50 TO STA 162+85
 STA 176+75 TO STA 181+15
 STA 213+60 TO STA 217+85
 STA 234+70 TO STA 248+95
 STA 313+05 TO STA 318+35
 STA 378+90 TO STA 385+50
 MAP 11
 STA 000+00 TO STA 000+20

PAVEMENT SCHEDULE

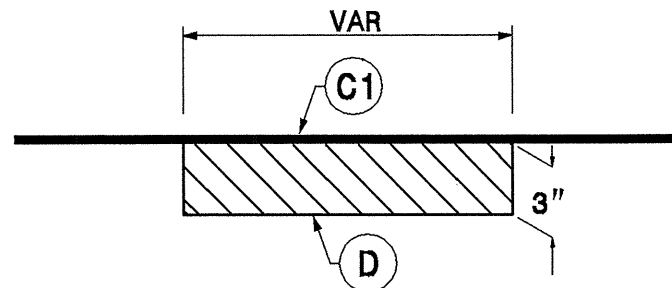
C1	PROP. APPROX. 1 1/2" ASPHALT CONCRETE SURFACE COURSE, TYPE S9.5B, AT AN AVERAGE RATE OF 168 LBS. PER SQ. YD.	F	AST MAT COAT, 78M	U2	EXISTING PAVED SHOULDER.
C2	PROP. APPROX. 1 1/2" ASPHALT CONCRETE SURFACE COURSE, TYPE S9.5B, AT AN AVERAGE RATE OF 168 LBS. PER SQ. YD. - PLACE IN MILLED AREA	R	EXISTING EXPRESSWAY GUTTER	V1	1 1/2" MILLING - 12 FT TO 24 FT
D	PROP. APPROX. 3" ASPHALT INTERMEDIATE COURSE, TYPE I19.0B, AT AN AVERAGE RATE OF 342 LBS. PER SQ. YD.	T	EXISTING EARTH SHOULDER - NOTE: SHOULDER RECONSTRUCTION AND SEEDING & MULCHING WILL NOT BE REQUIRED.	V2	0-1 1/2" MILLING FOR 7 FT FROM THE FRONT OF THE GUTTER TO THE ROADWAY
E	PROP. APPROX. 8" ASPHALT BASE COURSE, TYPE B25.0B, AT AN AVERAGE RATE OF 466 LBS. PER SQ. YD. IN EACH OF TWO LAYERS	U1	EXISTING PAVEMENT.	V3	MILLED RUMBLE STRIPS.

29-JUL-2009 07:58
 acing_projects\division 7\5179a\revised files\rock-typical.dgn
 \$\$\$USERNAME\$\$\$

STATE	PROJECT NO.	SHEET NO.	TOTAL SHEETS
N.C.	R-5179A & R-5180	5	9

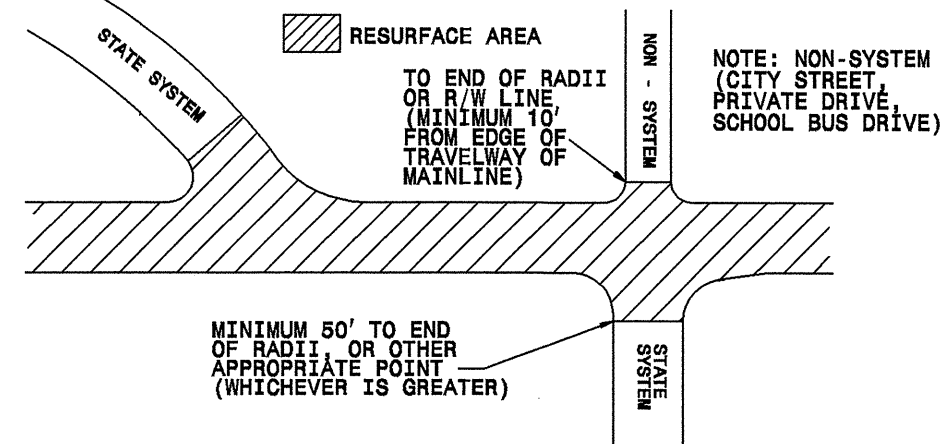
45213.3.ST1 (R-5179A)
45214.3.ST1 (R-5180)

MILLING DETAIL 3

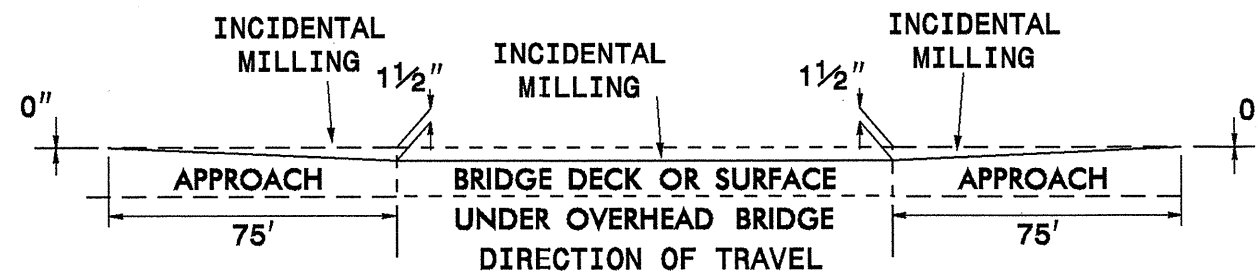


MILL EXISTING ASPHALT PAVEMENT 3" IN DEPTH, AT LOCATIONS AS DIRECTED BY THE ENGINEER. TO BE USED ON MAPS 1, 6 & 10

PAVING DETAIL 1 MAIN LINE IS BEING RESURFACED



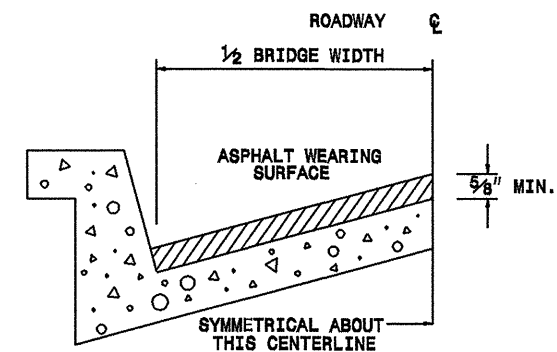
MILLING DETAIL 4



TO BE USED AT THE FOLLOWING LOCATIONS:

	MAP 1	MAP 10	
OVERHEAD	STA 013+77 TO STA 015+58	STA 037+10 TO STA 039+00	OVERHEAD
BRIDGE DECK	STA 112+00 TO STA 114+71	STA 151+85 TO STA 153+65	OVERHEAD
BRIDGE DECK	STA 131+00 TO STA 135+04	STA 280+15 TO STA 281+95	OVERHEAD
OVERHEAD	STA 208+90 TO STA 210+80	STA 376+45 TO STA 377+20	CONC DECK
OVERHEAD	STA 338+20 TO STA 340+01	STA 378+90 TO STA 379+65	CONC DECK
OVERHEAD	STA 451+45 TO STA 453+40	STA 357+30 TO STA 358+05	CONC DECK
		STA 360+85 TO STA 361+60	CONC DECK

NOTE: CARE SHALL BE TAKEN AT REPAIRED EXPANSION JOINTS ON VARIOUS BRIDGES. MILL TO A MINIMUM DEPTH AS DIRECTED BY THE ENGINEER TO AVOID THE STEEL PLATE.



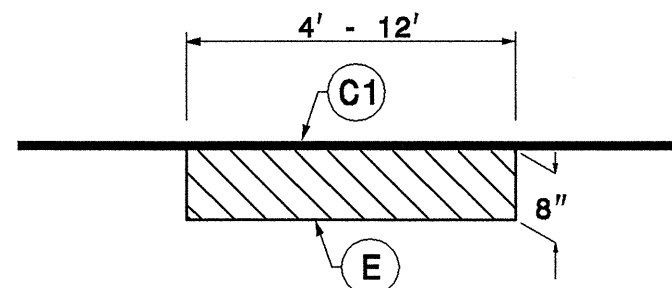
BRIDGE HALF TYPICAL SECTION

FOR BRIDGES WITH FLOOR DRAINS, CARE SHALL BE EXERCISED IN PLACING THE WEARING SURFACE AROUND FLOOR DRAINS SO AS NOT TO HINDER EFFECTIVE DRAINAGE. ALL DRAINS SHALL BE LEFT OPEN. THE PROPOSED WEARING SURFACE SHALL VARY IN THICKNESS AS NECESSARY TO PROVIDE A SMOOTH RIDING SURFACE. A THICKNESS OF NOT LESS THAN 5/8" SHALL BE PROVIDED. THE MAXIMUM THICKNESS SHALL PREFERABLY BE 1-1/2" UNLESS IT IS IMPRACTICAL TO PROVIDE A SMOOTH RIDING SURFACE OTHERWISE.

NOTES

ALL UNPAVED S.R. ROUTES TO BE SURFACED 50' FROM EDGE OF PAVEMENT OF MAIN PROJECT.
ALL PAVED S.R. ROUTES TO BE RESURFACED TO END OF RADDII, OR AS DIRECTED BY THE ENGINEER. EDGES, PAVEMENT WIDENING, INTERSECTIONS AND BRIDGE FLARES ARE INCLUDED IN THE SUMMARY OF QUANTITIES. BRIDGES TO BE RESURFACED AT LOCATIONS AND DEPTH AS DIRECTED BY THE ENGINEER.

PATCHING DETAIL 1



DIG OUT OR MILL EXISTING ASPHALT PAVEMENT 8" IN DEPTH, FOR PATCHING, AT LOCATIONS AS DIRECTED BY THE ENGINEER ON MAPS 1 AND 10. SEE SPECIAL PROVISION FOR PATCHING

PAVEMENT SCHEDULE

C1	PROP. APPROX. 1 1/2" ASPHALT CONCRETE SURFACE COURSE, TYPE S9.5B, AT AN AVERAGE RATE OF 168 LBS. PER SQ. YD.	F	AST MAT COAT, 78M	U2	EXISTING PAVED SHOULDER.
C2	PROP. APPROX. 1 1/2" ASPHALT CONCRETE SURFACE COURSE, TYPE S9.5B, AT AN AVERAGE RATE OF 168 LBS. PER SQ. YD. - PLACE IN MILLED AREA	R	EXISTING EXPRESSWAY GUTTER	V1	1 1/2" MILLING - 12 FT TO 24 FT
D	PROP. APPROX. 3" ASPHALT INTERMEDIATE COURSE, TYPE I19.0B, AT AN AVERAGE RATE OF 342 LBS. PER SQ. YD.	T	EXISTING EARTH SHOULDER - NOTE: SHOULDER RECONSTRUCTION AND SEEDING & MULCHING WILL NOT BE REQUIRED.	V2	0-1 1/2" MILLING FOR 7 FT FROM THE FRONT OF THE GUTTER TO THE ROADWAY
E	PROP. APPROX. 8" ASPHALT BASE COURSE, TYPE B25.0B, AT AN AVERAGE RATE OF 456 LBS. PER SQ. YD. IN EACH OF TWO LAYERS	U1	EXISTING PAVEMENT.	V3	MILLED RUMBLE STRIPS.

PROJECT NO.	SHEET NO.	TOTAL NO.
R-5179A (45213.3.ST1) R-5180 (45214.3.ST1)	6	9

SUMMARY OF QUANTITIES

PROJECT NO	COUNTY	MAP NO	ROUTE	DESCRIPTION	TYP NO	FINAL SURFACE TESTING REQUIRED	LENGTH	WIDTH	INCIDENTAL STONE BASE TONS	MILLING ASPHALT PAVEMENT, 1½" DEPTH SY	MILLING ASPHALT PAVEMENT, 3" DEPTH SY	MILLING ASPHALT PAVEMENT, 0" TO 1½" DEPTH SY	INCIDENTAL MILLING SY	INTERMEDIATE COURSE, 19.08 TONS	SURFACE COURSE, \$9.58 TONS	PG 64-22 PLANT MIX TONS	PATCHING EXISTING PAVEMENT TONS	AST MAT COAT 78M SY	MILLED RUMBLE STRIPS LF					
							MI	FT																
45213.3.ST1	Rockingham	1	US 220 NB	FROM NEW PAVEMENT JOINT SOUTH OF NC 135 TO THE VIRGINIA STATE LINE	1	NO	0.85	31	28	5,986	150		969	26	2,025	123		500	7,360	8,976				
					1	NO	0.06	31 - 43		440								147	9		660	634		
					1	NO	0.05	43		360		146						136	8		900	528		
					1 & 2	NO	0.44	31 - 44		4,656		460						1,124	67			1,807	4,646	
					2	NO	0.03	31 - 46		454									95	6			142	317
					2	NO	0.03	46 - 57		410		120							110	7			351	317
					2	NO	0.02	57 - 60		230		67							78	5			526	211
					2	NO	0.02	60		338									87	5			409	211
					2 & 3	NO	0.76	31		6,828		637	934						1,856	111			3,660	8,026
					3	NO	0.13	31 - 76		267									366	22			3,591	1,373
					3	NO	0.34	32		256			1,436						560	34			3,472	3,590
					3	NO	0.05	45 - 60											130	8			1,365	528
					3	NO	0.04	44											87	5			765	422
					3	NO	0.10	34 - 44											193	12			1,673	1,056
					1 & 3	NO	0.14	32 - 34				713							289	17			973	1,478
					1	NO	0.31	32				2,187							675	40			2,187	3,274
					1	NO	0.05	32 - 34				340							123	7			510	528
					1 & 2	NO	0.07	44				880							247	15			580	739
					2 & 3	NO	1.25	31				355		1,261	675				2,308	138			19,935	13,200
					3	NO	0.03	31 - 41											53	3			450	317
					3	NO	0.03	41 - 53											70	4			733	317
					3	NO	0.05	53 - 58											137	8			1,428	528
					3	NO	0.19	31											333	20			3,111	2,006
					3	NO	1.31	32							914				2,284	137			21,243	13,834
					1 & 3	NO	1.80	31				5,467		997	620				3,531	212			21,406	19,008
					1	NO	0.05	35 - 55				327							138	8			653	528
					1	NO	0.01	55 - 58				73							34	2			229	106
					1	NO	0.05	58				373							174	10			1,244	528
					1	NO	0.30	31				2,107							637	38			2,107	3,168
					1	NO	0.02	31 - 52				127						363	52	3			275	211
					1	NO	0.01	52 - 56										270	27	2			175	106
					1	NO	0.04	56 - 62				280						454	141	8			933	422
1	NO	0.02	62				127							72	4			454	211					
1 & 3	NO	0.67	31				173			627	345			1,173	70			10,320	7,075					
TOTAL FOR MAP NO. 1							9.32		28	33,754	150	5,229	6,066	26	19,492	1,168	500	115,627	98,419					
"	"	2	OFF RAMP - NC 135 (RAMP A)	FROM US 220 NB TO NC 135	4	NO	0.03	26							39	2			458					
					4	NO	0.10	16							79	5				939				
					4	NO	0.04	16 - 28										44	3			516		
					4	NO	0.02	28 - 38										33	2			387		
					4	NO	0.02	38										74	4			845		
TOTAL FOR MAP NO. 2							0.21							269	16			3,145						
"	"	3	ON RAMP - NC 135 (RAMP B)	FROM NC 135 TO US 220 NB	4	NO	0.21	16 - 17							172	10			2,033					
					4	NO	0.01	26									13	1			153			
TOTAL FOR MAP NO. 3							0.22							185	11			2,186						
"	"	4	OFF RAMP - BUSINESS 220	FROM US 220 NB TO BUSINESS 220	4	NO	0.166	24							197	12			2,337					
					4	NO	0.013	24 - 48									23	1			275			
TOTAL FOR MAP NO. 4							0.179							220	13			2,612						
"	"	5	ON RAMP - BUSINESS 220	FROM BUSINESS 220 TO US 220 NB	4	NO	0.133	19 - 22		133					146	9			1,600					
					TOTAL FOR MAP NO. 5							0.133		133				146	9			1,600		

PROJECT NO.	SHEET NO.	TOTAL NO.
R-5179A (45213.3.ST1)	7	9
R-5180 (45214.3.ST1)		

SUMMARY OF QUANTITIES

PROJECT NO	COUNTY	MAP NO	ROUTE	DESCRIPTION	TYP NO	FINAL SURFACE TESTING REQUIRED	LENGTH MI	WIDTH FT	INCIDENTAL STONE BASE TONS	MILLING ASPHALT PAVEMENT, 1 1/2" DEPTH SY	MILLING ASPHALT PAVEMENT, 3" DEPTH SY	MILLING ASPHALT PAVEMENT, 0" TO 1 1/2" DEPTH SY	INCIDENTAL MILLING SY	INTERMEDIATE COURSE, 1 1/2" DEPTH TONS	SURFACE COURSE, \$9.5B TONS	PG 64-22 PLANT MIX TONS	PATCHING EXISTING PAVEMENT TONS	AST MAT COAT 78M SY	MILLED RUMBLE STRIPS LF			
																				NO	MI	FT
45213.3.ST1	"	6	OFF RAMP - NC 770	FROM US 220 NB TO NC 770	4	NO	0.019	24			67				11	23	2		268			
					4	NO	0.003	21 - 24									3	0		40		
					4	NO	0.135	21										141	8		1,663	
					4	NO	0.012	21 - 64										25	2		299	
					4	NO	0.005	64										18	1		188	
TOTAL FOR MAP NO. 6							0.174			0	67			11	210	13		2,458				
"	"	7	ON RAMP - NC 770	FROM NC 770 TO US 220 NB	4	NO	0.019	21		467					117	7		931				
					4	NO	0.114	21									119	7		1,405		
					4	NO	0.006	21 - 24										7	0		79	
					4	NO	0.032	24 - 28										41	2		488	
TOTAL FOR MAP NO. 7							0.171			467				284	16		2,903					
"	"	8	OFF RAMP - SR 1360 (SMITH ROAD)	FROM US 220 NB TO SR 1360 (SMITH ROAD)	4	NO	0.023	26		200					47	3		351				
					4	NO	0.105	18									94	6		1,109		
					4	NO	0.007	18									15	1		173		
TOTAL FOR MAP NO. 8							0.135			200				156	10		1,633					
"	"	9	ON RAMP - SR 1360 (SMITH ROAD)	FROM SR 1360 (SMITH ROAD) TO US 220 NB	4	NO	0.007	48		200					46	3		341				
					4	NO	0.017	17 - 48									27	2		324		
					4	NO	0.068	15 - 17										54	3		638	
					4	NO	0.009	17 - 28										10	1		119	
					4	NO	0.014	28 - 30								58		20	1		238	
TOTAL FOR MAP NO. 9							0.115			200		58		157	10		1,660					
"	"	10	US 220SB	FROM THE VIRGINIA STATE LINE TO A PAVEMENT JOINT NORTH OF NC 135	3	NO	0.05	32	20	500	150		356	26	121	8		690	528			
					3	NO	0.06	32 - 43									111	7		934	634	
					3	NO	0.03	43 - 54										72	4		724	317
					3	NO	0.03	54										80	5		775	317
					3	NO	0.18	31										276	17		2,694	1,901
					3	NO	0.04	31 - 42										72	4		729	422
					3	NO	0.05	42										111	7		1,102	528
					3	NO	0.13	31								233		216	13		1,903	1,373
					3	NO	0.06	31 - 42										108	6		1,152	634
					3	NO	0.06	42										136	8		1,319	634
					3	NO	0.01	31 - 36										17	1		139	106
					3	NO	0.01	36 - 47										21	1		153	106
					3	NO	0.02	47 - 49									1,035	47	3		264	211
					3	NO	0.01	40 - 49										22	1		125	106
					3	NO	0.01	31 - 40										18	1		139	106
					3	NO	0.21	31										322	19		3,042	2,218
					3	NO	0.04	31 - 53										83	5		920	422
					3	NO	0.07	53 - 62										217	13		2,220	739
					3	NO	0.48	31										744	45		7,042	5,069
					3	NO	0.03	31 - 40										54	3		541	327
					3	NO	0.02	40 - 48										43	3		443	211
					3	NO	0.04	48 - 56										103	6		971	422
					3	NO	0.01	56										34	2		437	106
					3	NO	0.57	31								934		939	56		8,455	6,019
					3	NO	0.03	31 - 38										51	3		523	317
					3	NO	0.04	38 - 61										98	6		1,788	422
					1 & 3	NO	0.05	61										154	9		1,558	528
					1	NO	1.14	31						773		1,159	620	2,541	152		19,509	12,038
					1	NO	0.06	31 - 44						393				144	9		828	634
					1	NO	0.05	44						353				141	8		774	528
					1 & 3	NO	0.47	31						11				735	44		7,034	4,921
					3	NO	0.03	45 - 50								105		70	4		548	275
3	NO	0.05	50								218		128	8		1,255	528					
3	NO	0.25	31								8		384	23		3,663	2,640					

PROJECT NO.	SHEET NO.	TOTAL NO.
R-5179A (45213.3.ST1)	8	9
R-5180 (45214.3.ST1)		

SUMMARY OF QUANTITIES

PROJECT NO	COUNTY	MAP NO	ROUTE	DESCRIPTION	TYP NO	FINAL SURFACE TESTING REQUIRED	LENGTH MI	WIDTH FT	INCIDENTAL STONE BASE TONS	MILLING ASPHALT PAVEMENT, 1 1/2" DEPTH SY	MILLING ASPHALT PAVEMENT, 3" DEPTH SY	MILLING ASPHALT PAVEMENT, 0" TO 1 1/2" DEPTH SY	INCIDENTAL MILLING SY	INTERMEDIATE COURSE, 119.0B TONS	SURFACE COURSE, S9.5B TONS	PG 64-22 PLANT MIX TONS	PATCHING EXISTING PAVEMENT TONS	AST MAT COAT 78M SY	MILLED RUMBLE STRIPS LF					
45213.3.ST1	"	10	US 220SB	FROM THE VIRGINIA STATE LINE TO A PAVEMENT JOINT NORTH OF NC 135	3	NO	0.05	31 - 43								91	5		896	517				
					3	NO	0.053	36 - 43						124					113	7		1,184	560	
					3	NO	1.25	31								984	620			2,613	157		21,618	13,200
					3	NO	0.05	31 - 42												90	5		915	528
					3	NO	0.05	42												112	7		1,130	528
					3	NO	1.46	31								937	1,250			2,937	176		24,759	15,418
					3	NO	0.04	31 - 40												70	4		711	422
					3	NO	0.01	40 - 43												21	1		296	148
					3	NO	0.04	43 - 52												94	6		876	422
					3	NO	0.02	52												53	3		433	211
					3	NO	0.32	31												498	30		4,651	3,379
					3	NO	0.04	31 - 40												70	4		656	422
					3	NO	0.01	40 - 44												21	1		260	106
					3	NO	0.04	44 - 55												98	6		1,088	422
					3	NO	0.02	55												54	3		463	211
					3	NO	0.42	31												646	39		6,187	4,435
					3	NO	0.04	31 - 41												71	4		667	422
					3	NO	0.03	41 - 51												68	4		711	317
					3	NO	0.04	51												107	6		1,167	422
					3	NO	0.39	31										345		600	36		5,784	4,118
TOTAL FOR MAP NO. 10							8.764		20	2,030	150	4,764	4,226	26	16,840	1,008		148,845	92,495					
"	"	11	OFF RAMP - SR 1360 (SMITH ROAD)	FROM US 220SB TO SR 1360 (SMITH ROAD)	4	NO	0.004	32								6	0		75					
					4	NO	0.008	26 - 32										11	1		136			
					4	NO	0.102	26											131	8		1,556		
					4	NO	0.038	18 - 20											36	2		424		
					4	NO	0.005	44.5											11	1		131		
TOTAL FOR MAP NO. 11							0.157					16			195	12		2,322						
"	"	12	ON RAMP - SR 1360 (SMITH ROAD)	FROM SR 1360 (SMITH ROAD) TO US 220SB	4	NO	0.007	52								26	2		294					
					4	NO	0.016	17 - 52										27	2		324			
					4	NO	0.029	17											24	1		289		
					4	NO	0.058	23											66	4		783		
					TOTAL FOR MAP NO. 12							0.110							143	9		1,690		
"	"	13	OFF RAMP - NC 770	FROM US 220SB TO NC 770	4	NO	0.08	27								107	6		1,267					
					4	NO	0.066	18										59	4		697			
					4	NO	0.009	18 - 54											16	1		190		
					4	NO	0.003	54											9	1		110		
					TOTAL FOR MAP NO. 13							0.158							191	12		2,264		
"	"	14	ON RAMP - NC 770	FROM NC 770 TO US 220SB	4	NO	0.017	27								67	4		798					
					4	NO	0.166	27										222	13		2,629			
					TOTAL FOR MAP NO. 14							0.183						289	17		3,427			
"	"	15	OFF RAMP - BUSINESS 220	FROM US 220SB TO BUSINESS 220	4	NO	0.209	26							269	16		3,188						
					4	NO	0.009	26										16	1		190			
					TOTAL FOR MAP NO. 15							0.218						285	17		3,378			
"	"	16	ON RAMP - BUSINESS 220	FROM BUSINESS 220 TO US 220SB	4	NO	0.019	26			133				59	4		574						
					4	NO	0.093	26										120	7		1,419			
					TOTAL FOR MAP NO. 16							0.112			133			179	11		1,993			
TOTAL FOR PROJ NO. 45213.3.ST1							20.359		48	36,917	367	10,067	10,292	63	39,241	2,352	500	297,743	190,914					
45214.3.ST1	Rockingham	17	US 220 NB & SB	FROM NC 68 TO THE VIRGINIA STATE LINE		NO	18.1																	
TOTAL FOR PROJ NO. 45214.3.ST1							18.1																	
GRAND TOTAL							20.359		48	36,917	367	10,067	10,292	63	39,241	2,352	500	297,743	190,914					

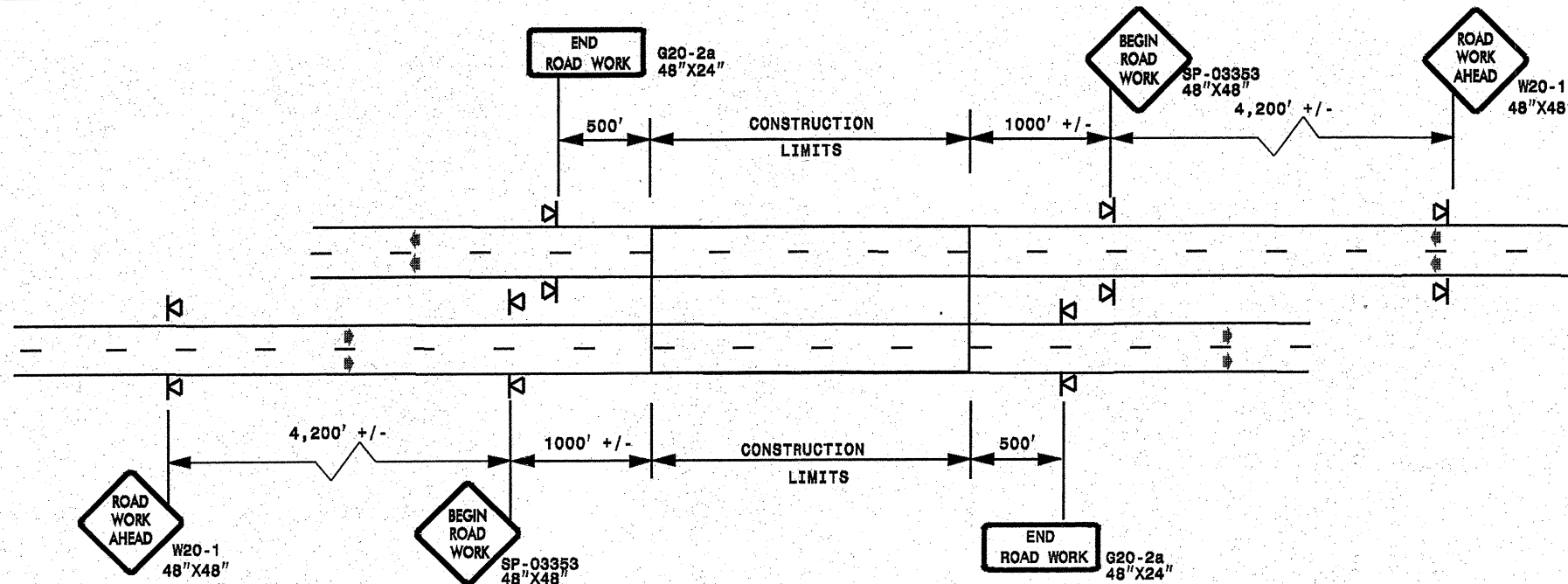
PROJECT NO.	SHEET NO.	TOTAL NO.
R-5179A (45213.3.ST1)	9	9
R-5180 (45214.3.ST1)		

THERMOPLASTIC AND PAINT QUANTITIES

PROJECT NO	COUNTY	MAP NO	ROUTE	DESCRIPTION	TRAFFIC CONTROL	PORTABLE LIGHTING	4" X 90 M WHITE THERMO	4" X 90 M YELLOW THERMO	4" X 120 M WHITE THERMO	6" X 120 M WHITE THERMO	8" X 90 M WHITE THERMO	24" X 120 M WHITE THERMO	THERMO MERGE LEFT ARROW 90 M	THERMO LT ARROW 90 M	THERMO STR ARROW 90 M	THERMO RT ARROW 90 M	THERMO STR & LT ARROW 90 M	THERMO RAMP ARROW	4" WHITE PAINT	4" YELLOW PAINT	REPLACE SNOWPLOWABLE PAVEMENT MARKER REFLECTOR	SNOWPLOWABLE PAVEMENT MARKERS - CRYSTALLURED		
							LF	LF	LF	LF	LF	LF	EA	EA	EA	EA	EA	EA	EA	EA	EA	EA	EA	EA
45213.3.ST1	Rockingham	1	US 220 NB	FROM NEW PAVEMENT JOINT SOUTH OF NC 135 TO THE VIRGINIA STATE LINE	1	1	48,893	49,246	16,873		4,082	110	10	39	84	12			45,224	5,000				
"	"	2	OFF RAMP - NC 135 (RAMP A)	FROM US 220 NB TO NC 135					1,051	1,051	114	6	249	46				2	2					
"	"	3	ON RAMP - NC 135 (RAMP B)	FROM NC 135 TO US 220 NB					1,160	1,160														
"	"	4	OFF RAMP - BUSINESS 220	FROM US 220 NB TO BUSINESS 220					945	945										1				
"	"	5	ON RAMP - BUSINESS 220	FROM BUSINESS 220 TO US 220 NB					700	700														
"	"	6	OFF RAMP - NC 770	FROM US 220 NB TO NC 770					922	807										1				
"	"	7	ON RAMP - NC 770	FROM NC 770 TO US 220 NB					900	900														
"	"	8	OFF RAMP - SR 1360 (SMITH ROAD)	FROM US 220 NB TO SR 1360 (SMITH ROAD)					715	715										1				
"	"	9	ON RAMP - SR 1360 (SMITH ROAD)	FROM SR 1360 (SMITH ROAD) TO US 220 NB					605	605														
"	"	10	US 220SB	FROM THE VIRGINIA STATE LINE TO A PAVEMENT JOINT NORTH OF NC 135					44,985	45,655	16,084		3,750	185	7	39	78	15			2,296	500		
"	"	11	OFF RAMP - SR 1360 (SMITH ROAD)	FROM US 220SB TO SR 1360 (SMITH ROAD)					830	830										1				
"	"	12	ON RAMP - SR 1360 (SMITH ROAD)	FROM SR 1360 (SMITH ROAD) TO US 220SB					580	580														
"	"	13	OFF RAMP - NC 770	FROM US 220SB TO NC 770					830	830										1				
"	"	14	ON RAMP - NC 770	FROM NC 770 TO US 220SB					965	965														
"	"	15	OFF RAMP - BUSINESS 220	FROM US 220SB TO BUSINESS 220					1,150	1,150										1				
"	"	16	ON RAMP - BUSINESS 220	FROM BUSINESS 220 TO US 220SB					590	590														
TOTAL FOR PROJ NO. 45213.3.ST1							1	105,821	106,729	33,071	6	8,081	341	17	78	162	29	2	6	47,520	5,500			
								212,550								294			53,020					
45214.3.ST1	Rockingham	17	US 220 NB & SB	FROM NC 68 TO THE VIRGINIA STATE LINE																	315	3,226		
TOTAL FOR PROJ NO. 45214.3.ST1																						315	3,226	
GRAND TOTAL							1	105,821	106,729	33,071	6	8,081	341	17	78	162	29	2	6	47,520	5,500	315	3,226	
								212,550							294			53,020						

ADVANCE WORK ZONE WARNING SIGNING FOR FREEWAYS (4 LANES OR GREATER)

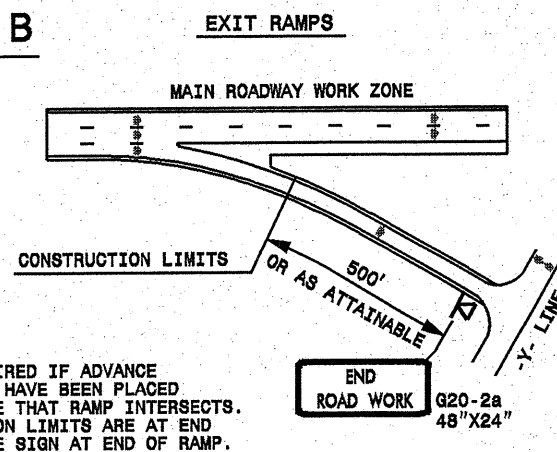
DETAIL A



STATE OF NORTH CAROLINA
DEPT. OF TRANSPORTATION
DIVISION OF HIGHWAYS
RALEIGH, N.C.

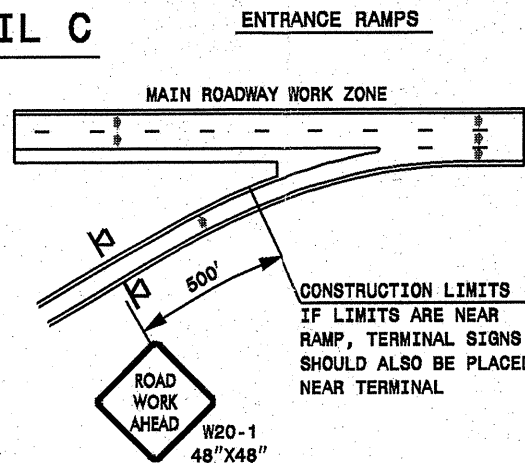
ROADWAYS INTERSECTING ALONG FREEWAY WORK ZONE (Y-LINES)

DETAIL B



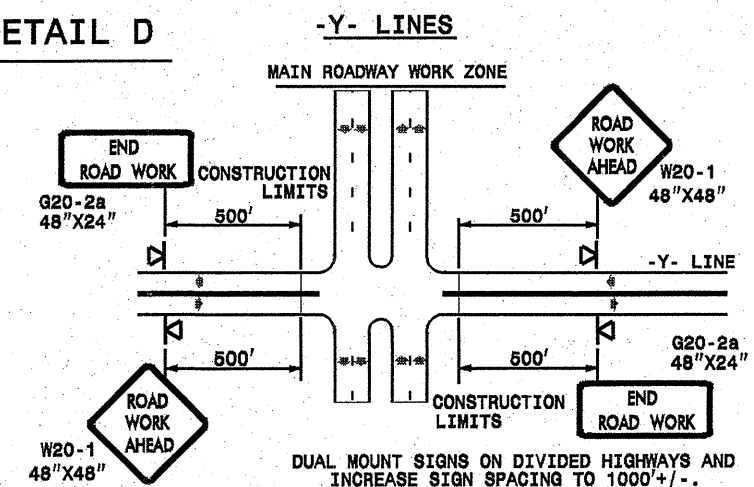
NOTE:
SIGN NOT REQUIRED IF ADVANCE
WARNING SIGNS HAVE BEEN PLACED
ALONG -Y- LINE THAT RAMP INTERSECTS.
IF CONSTRUCTION LIMITS ARE AT END
OF RAMP, PLACE SIGN AT END OF RAMP.

DETAIL C



CONSTRUCTION LIMITS
IF LIMITS ARE NEAR
RAMP, TERMINAL SIGNS
SHOULD ALSO BE PLACED
NEAR TERMINAL

DETAIL D



DUAL MOUNT SIGNS ON DIVIDED HIGHWAYS AND
INCREASE SIGN SPACING TO 1000' +/-.

GENERAL NOTES

- USE FLUORESCENT ORANGE SHEETING (TYPE VII OR HIGHER) ON ALL ADVANCE WORK ZONE SIGNS.
- DO NOT INSTALL ADVANCE WARNING SIGNS MORE THAN 3 DAYS PRIOR TO BEGINNING OF WORK.
- ALL SIGN SPACING DIMENSIONS ARE APPROXIMATE, FIELD ADJUST AS NECESSARY OR AS DIRECTED.
- USE PORTABLE WORK ZONE SIGNS ONLY WITH PORTABLE WORK ZONE SIGN STANDS SPECIFICALLY DESIGNED FOR ONE ANOTHER. PORTABLE WORK ZONE SIGNS MAY BE ROLL UP OR APPROVED COMPOSITE.
- PROVIDE PORTABLE WORK ZONE SIGN STANDS, PORTABLE SIGNS AND SIGN SHEETING WHICH ARE LISTED ON THE NORTH CAROLINA DEPARTMENT OF TRANSPORTATION'S APPROVED PRODUCT LIST OR ACCEPTED AS TRAFFIC QUALIFIED BY THE TRAFFIC CONTROL UNIT.
- ** TWO-WAY UNDIVIDED ADVANCE WARNING SIGN CONFIGURATION MAY BE USED ON MULTI-LANE FACILITIES WHERE CONDITIONS LIMIT THE USE OF DUAL MOUNTED SIGNS AS DETERMINED BY THE ENGINEER.

LEGEND

- ◁ PORTABLE SIGN
- ➔ DIRECTION OF TRAFFIC FLOW

SHEET 1 OF 1

DETAIL DRAWING
FOR FREEWAYS
WORK ZONE WARNING SIGNS
(SHORT-DURATION LANE CLOSURES)

APPROVED: _____ DATE: _____	DETAIL DRAWING FOR FREEWAYS WORK ZONE WARNING SIGNS	
SEAL	SCALE: NONE	REVISIONS
	DATE: _____	7-98 10/01
	DWG. BY: _____	10-98 09/04
	DESIGN BY: _____	01/01 11/04
REVIEWED BY: _____	DATE: _____	DATE: _____

29-JUL-2009 14:28 s:\signing\resurfacing\030509\resurfacing2009\div07\c202425a8b_452133st1_r-5179a_452143st1_r-5180_freelanesgreat\july2006_portable.dgn