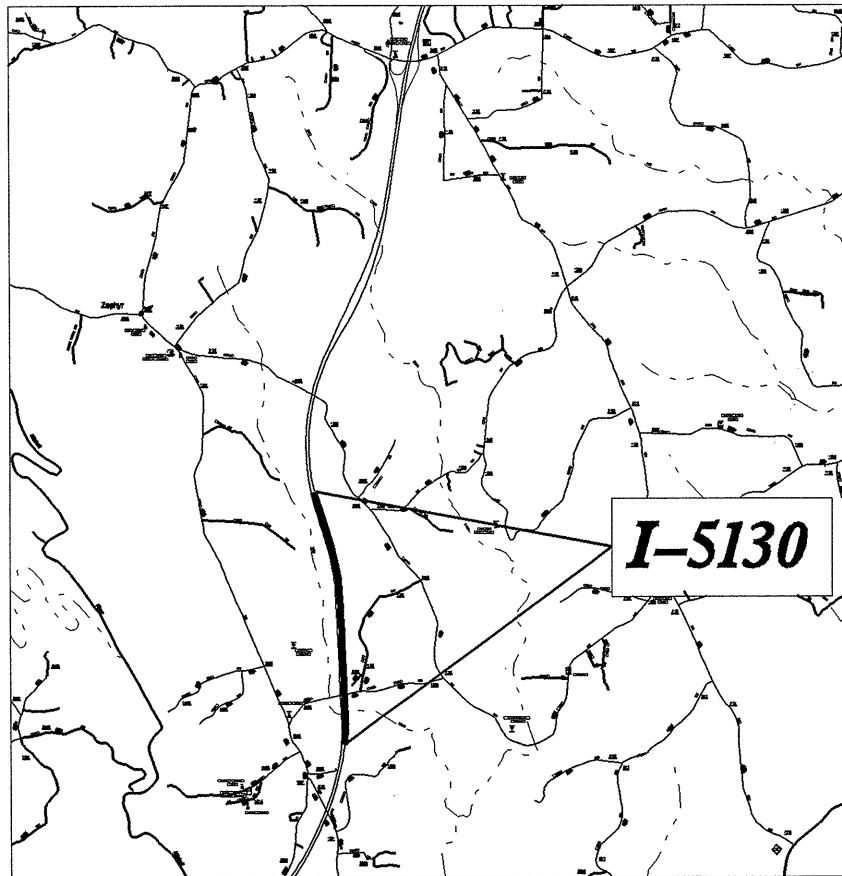


TIP PROJECT: I-5130

CONTRACT: C202390

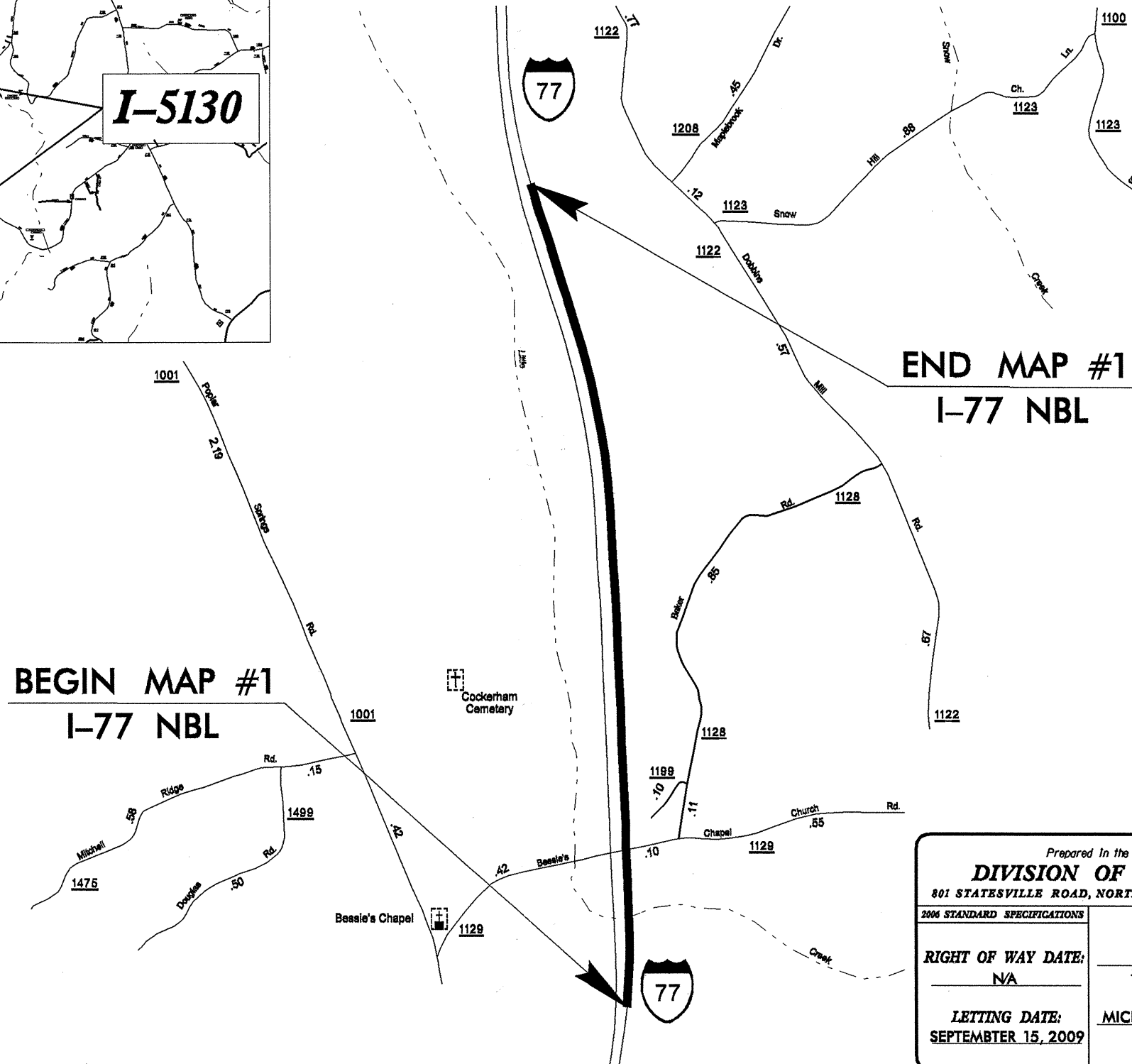


STATE OF NORTH CAROLINA
DIVISION OF HIGHWAYS

SURRY COUNTY

LOCATION: I-77 NBL FROM MILE MARKER 88.4 TO MILE MARKER 90
TYPE OF WORK: MILLING, RESURFACING, AND PAVEMENT MARKINGS

STATE PROJECT REFERENCE NO.	SHEET NO.	TOTAL SHEETS
I-5130	1	



END MAP #1
I-77 NBL

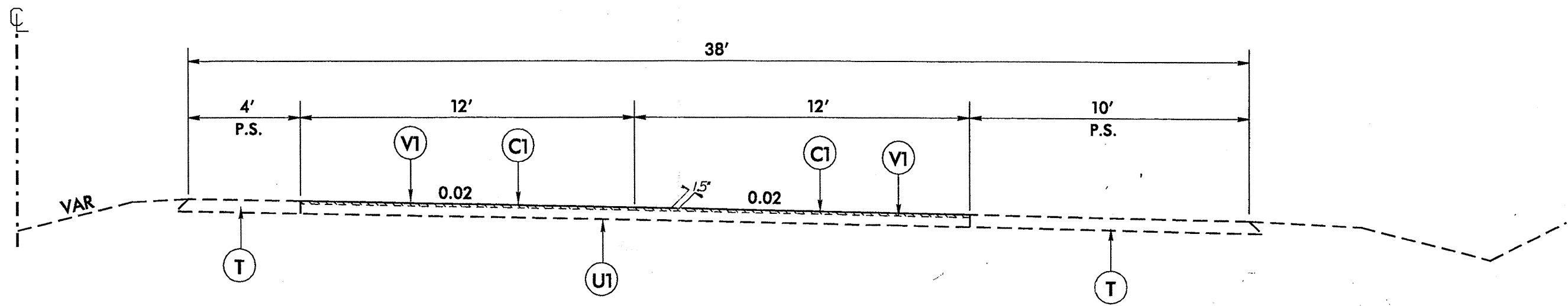
BEGIN MAP #1
I-77 NBL

Prepared in the Office of:
DIVISION OF HIGHWAYS
801 STATESVILLE ROAD, NORTH WILKESBORO, NC 28659
2006 STANDARD SPECIFICATIONS

RIGHT OF WAY DATE: NA	JOE L. LAWS, PE DIVISION PROJECT MANAGER
LETTING DATE: SEPTEMBER 15, 2009	MICHAEL A. PETTYJOHN, PE DIVISION ENGINEER

DIVISION OF HIGHWAYS
STATE OF NORTH CAROLINA

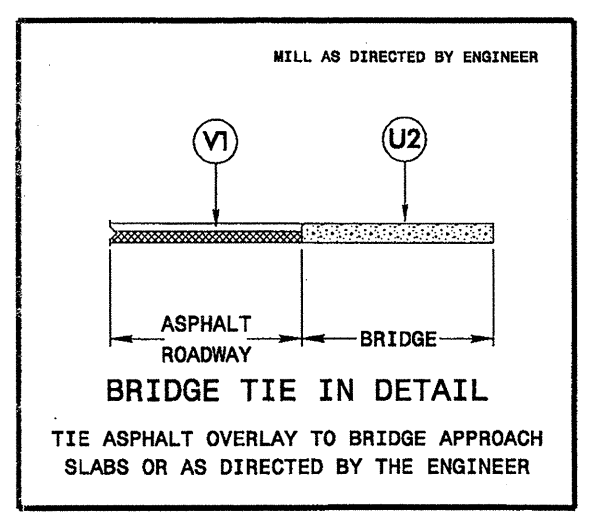
P.E.
STATE HIGHWAY DESIGN ENGINEER



TYPICAL SECTION NO. 1

MAP #1 - I-77 NBL FROM MILE MARKER 88.4 TO MILE MARKER 90 (1.60 MI)
 NOTE: VARIABLE DEPTH MILLING REQUIRED TO RE-ESTABLISH CROSS SLOPE

PAVEMENT SCHEDULE	
C1	1½" ASPHALT CONCRETE SURFACE COURSE, TYPE S 9.5 C, AT AN AVERAGE RATE OF 168 LBS. PER SQ. YD. (MILL AND FILL)
T	EXISTING PAVED SHOULDER
U1	EXISTING PAVEMENT
U2	EXISTING BRIDGE DECK
V1	MILLING BITUMINOUS PAVEMENT. 0" - 1½" DEPTH



I-5130: I-77 FROM MILE MARKER 88.4 TO MILE MARKER 90		
DIVISION II SURRY COUNTY		
REVISIONS	INT.	DATE
N.C. DEPARTMENT of TRANSPORTATION DIVISION of HIGHWAYS DIVISION ELEVEN		SCALE: N/A DATE: 6/2009 PREPARED BY: J. L. LAWS REVIEWED BY:

08-JUL-2009 08:36
 c:\my documents\project manager\economic stimulus projects\1-77 mp884-mp90-surry\1-5130-ddc.typ-051109.dgn
 6/2/99

PROJECT NO.	SHEET NO.	TOTAL NO.
I-5130	3	

**POLYUREA AND PAINT
QUANTITIES**

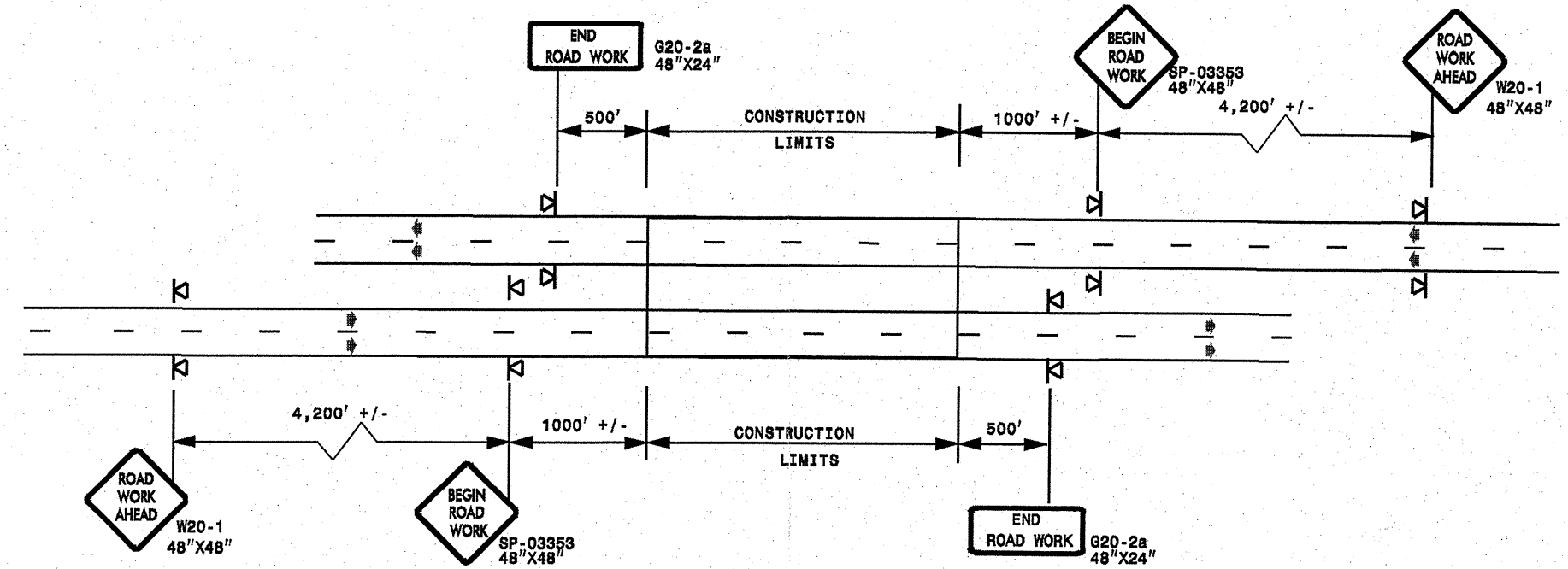
4589000000-N	4847100000-E	4905000000-N	
TRAFFIC CONTROL	6" YELLOW POLYUREA (HIGHLY REFLECTIVE)	6" WHITE POLYUREA (HIGHLY REFLECTIVE)	SNOW PLOWABLE MARKERS
LS	LF	LF	EA
1	8,448	10,560	106
1	8,448	10,560	106
	19,008		

SUMMARY OF QUANTITIES

PROJECT NO	COUNTY	MAP NO	ROUTE	DESCRIPTION	TYP NO	LENGTH MI	WIDTH FT	0" TO 1.5" MILLING SY	SURFACE COURSE, S9.5C TONS	PG 70-22 PLANT MIX TONS
I-5130	Surry	1	I-77 NBL	FROM MILE MARKER 88.4 TO MILE MARKER 90	1	1.6	24	22528	1,902	114
TOTAL FOR PROJ NO. I-5130						1.6		22528	1,902	114

ADVANCE WORK ZONE WARNING SIGNING FOR FREEWAYS (4 LANES OR GREATER)

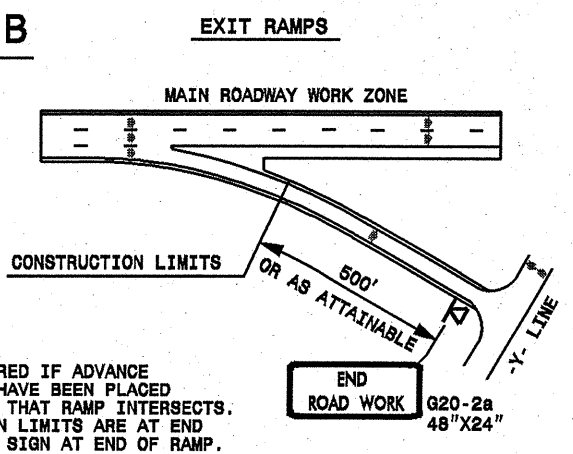
DETAIL A



STATE OF NORTH CAROLINA
 DEPT. OF TRANSPORTATION
 DIVISION OF HIGHWAYS
 RALEIGH, N.C.

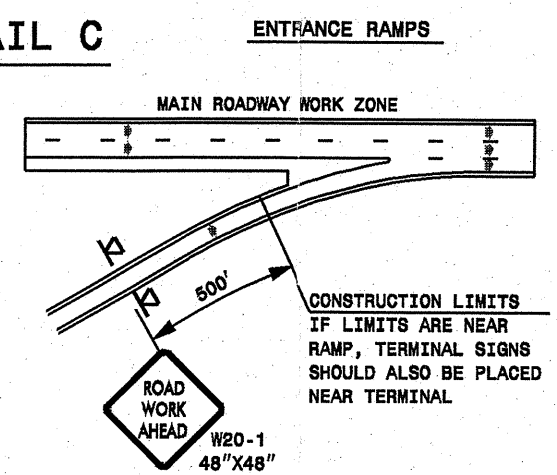
ROADWAYS INTERSECTING ALONG FREEWAY WORK ZONE (Y-LINES)

DETAIL B



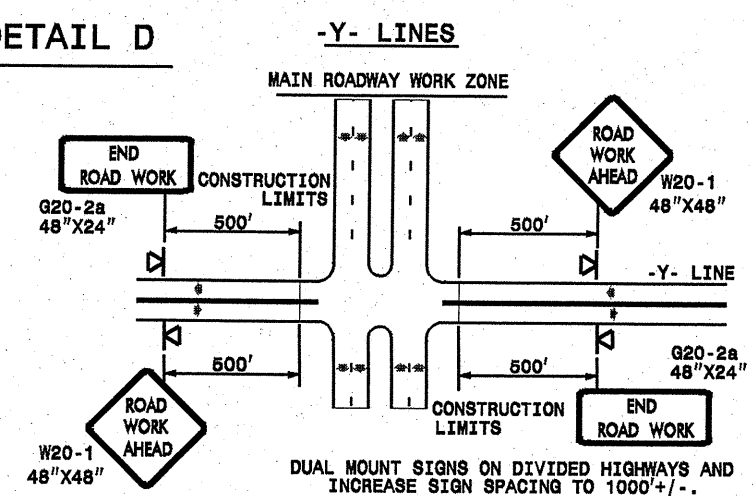
NOTE:
 SIGN NOT REQUIRED IF ADVANCE WARNING SIGNS HAVE BEEN PLACED ALONG -Y- LINE THAT RAMP INTERSECTS. IF CONSTRUCTION LIMITS ARE AT END OF RAMP, PLACE SIGN AT END OF RAMP.

DETAIL C



CONSTRUCTION LIMITS IF LIMITS ARE NEAR RAMP, TERMINAL SIGNS SHOULD ALSO BE PLACED NEAR TERMINAL

DETAIL D



DUAL MOUNT SIGNS ON DIVIDED HIGHWAYS AND INCREASE SIGN SPACING TO 1000'+/-.

**DETAIL DRAWING
 FOR FREEWAYS
 WORK ZONE WARNING SIGNS
 (SHORT-DURATION LANE CLOSURES)**

GENERAL NOTES

- USE FLUORESCENT ORANGE SHEETING (TYPE VII OR HIGHER) ON ALL ADVANCE WORK ZONE SIGNS.
- DO NOT INSTALL ADVANCE WARNING SIGNS MORE THAN 3 DAYS PRIOR TO BEGINNING OF WORK.
- ALL SIGN SPACING DIMENSIONS ARE APPROXIMATE, FIELD ADJUST AS NECESSARY OR AS DIRECTED.
- USE PORTABLE WORK ZONE SIGNS ONLY WITH PORTABLE WORK ZONE SIGN STANDS SPECIFICALLY DESIGNED FOR ONE ANOTHER. PORTABLE WORK ZONE SIGNS MAY BE ROLL UP OR APPROVED COMPOSITE.
- PROVIDE PORTABLE WORK ZONE SIGN STANDS, PORTABLE SIGNS AND SIGN SHEETING WHICH ARE LISTED ON THE NORTH CAROLINA DEPARTMENT OF TRANSPORTATION'S APPROVED PRODUCT LIST OR ACCEPTED AS TRAFFIC QUALIFIED BY THE TRAFFIC CONTROL UNIT.
- ** TWO-WAY UNDIVIDED ADVANCE WARNING SIGN CONFIGURATION MAY BE USED ON MULTI-LANE FACILITIES WHERE CONDITIONS LIMIT THE USE OF DUAL MOUNTED SIGNS AS DETERMINED BY THE ENGINEER.

LEGEND

◀ PORTABLE SIGN

➡ DIRECTION OF TRAFFIC FLOW

APPROVED: _____	DATE: _____	DETAIL DRAWING FOR FREEWAYS WORK ZONE WARNING SIGNS	
SEAL	SCALE: NONE		
	DATE: _____		
	DWG. BY: _____		
	REVIEWED BY: _____		
		REVISIONS	
		7-98	10/01
		10-98	03/04
		01/01	11/04

15-JUL-2009 13:40 sta.signing\resur\resur\fac\hgd\2009\dwg\c202390_4509933.st1_1-5130_freelanesgreat\july2006_portable.dgn