

05/08/99

TIP PROJECT: B-4137

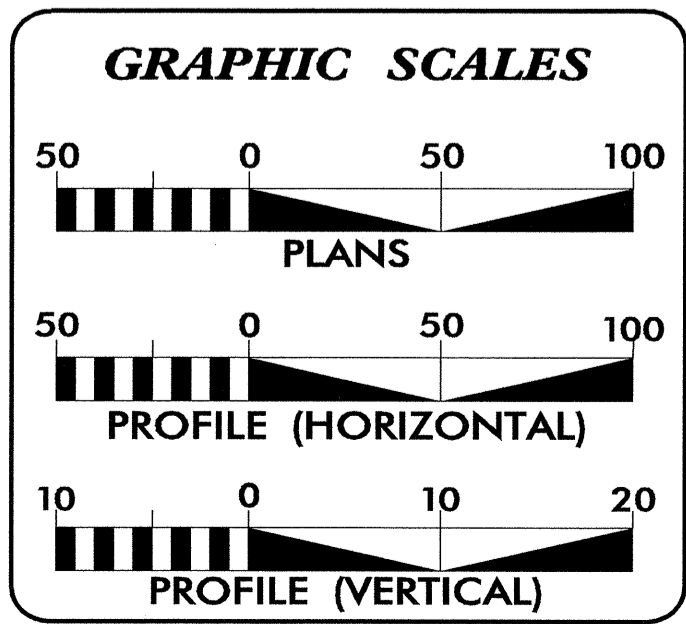
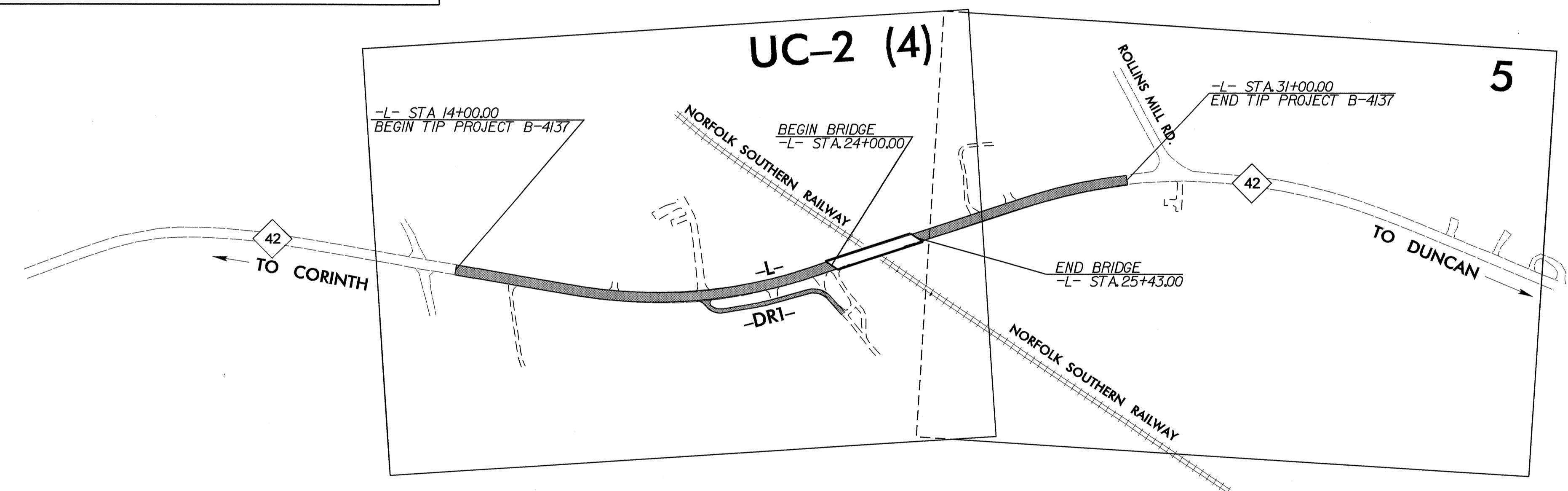
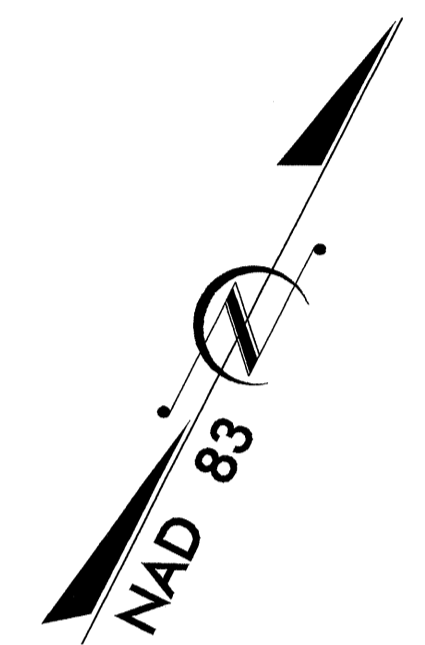
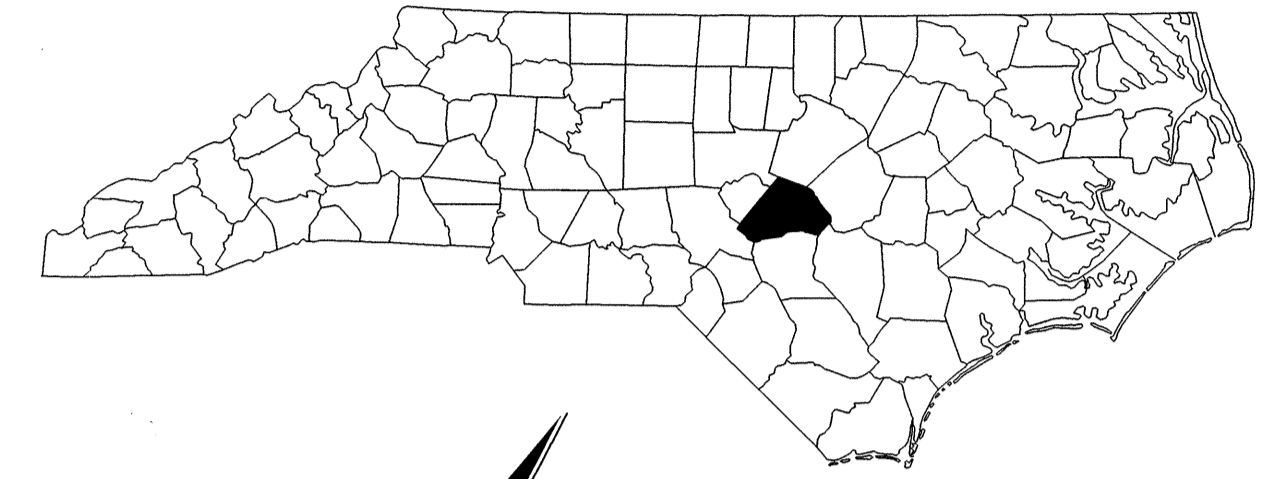
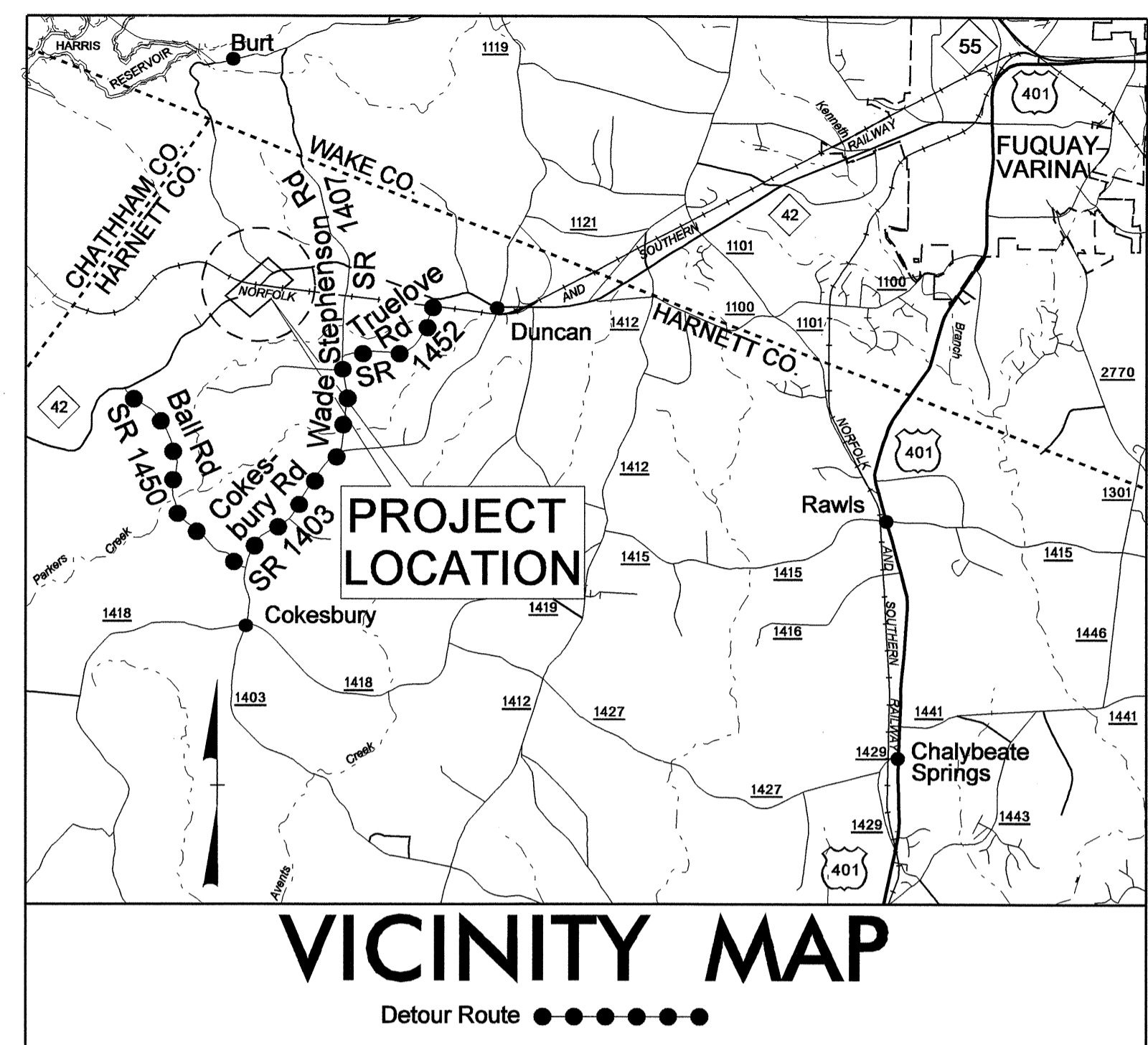
T.I.P. NO.	SHEET NO.
B-4137	UC-1

STATE OF NORTH CAROLINA
DIVISION OF HIGHWAYS

**UTILITY CONSTRUCTION PLANS
HARNETT COUNTY**

**LOCATION: BRIDGE No. 35 OVER NORFOLK
AND SOUTHERN RAILROAD ON NC 42**

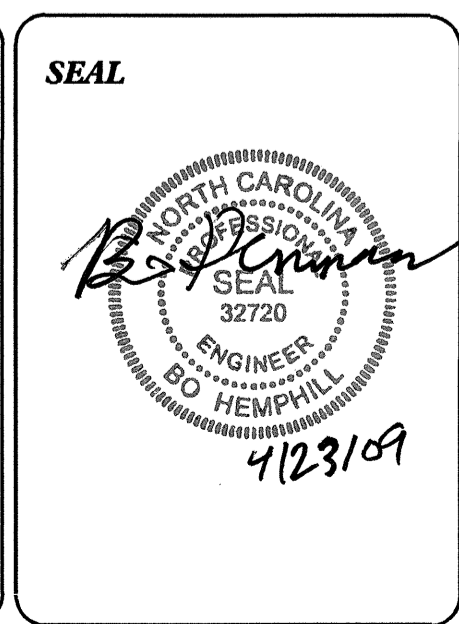
TYPE OF WORK: WATER



SHEET NO.	DESCRIPTION
UC-1	TITLE SHEET
UC-2	UTILITY CONSTRUCTION PLAN SHEET
UC-3	DETAILS SHEET

WATER AND SEWER OWNERS ON PROJECT

(1) WATER - DEPARTMENT OF PUBLIC UTILITIES,
HARNETT COUNTY

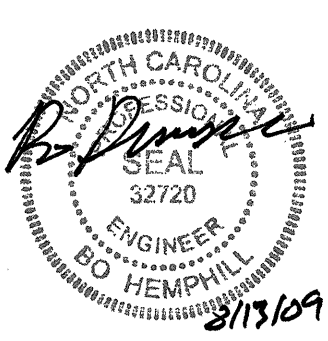


PREPARED IN THE OFFICE OF:
**DIVISION OF HIGHWAYS
UTILITIES ENGINEERING
SECTION**

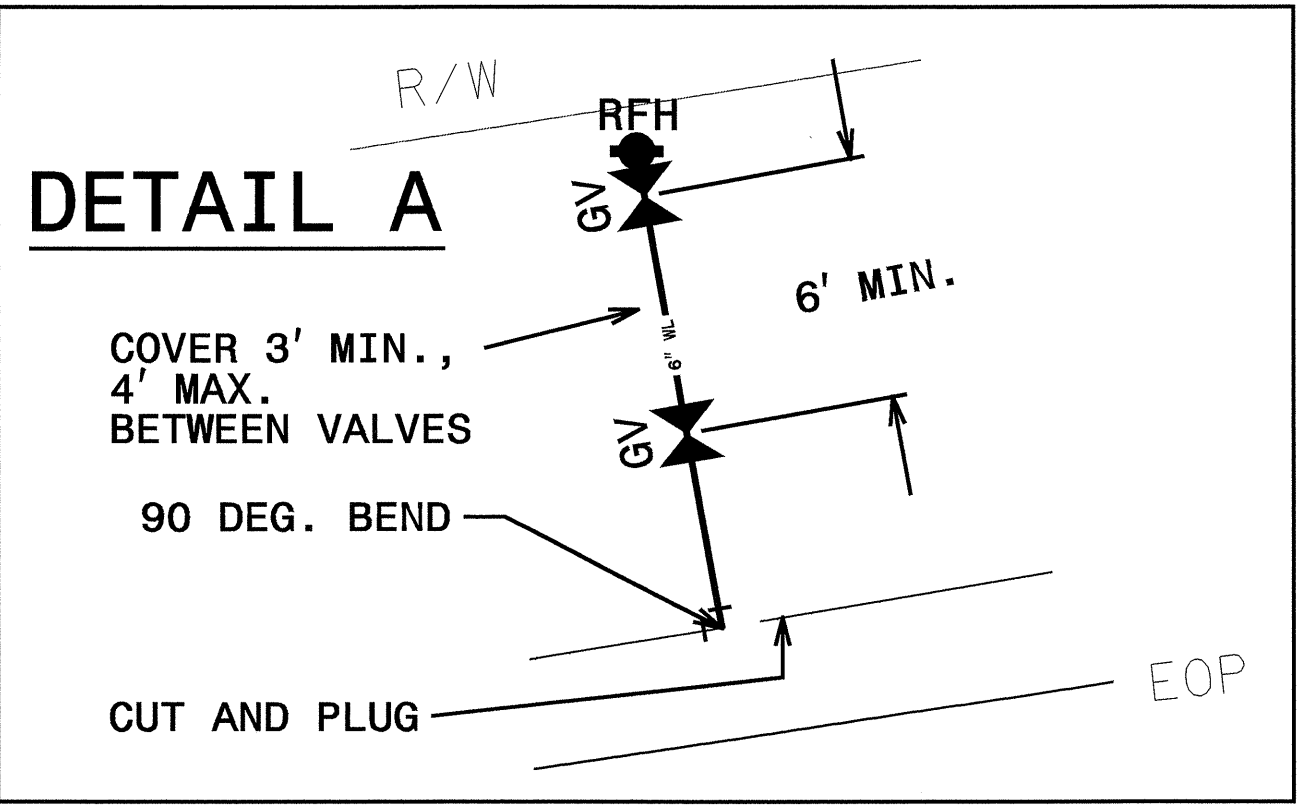
1591 MAIL SERVICES CENTER
RALEIGH NC 27699-1591
PHONE (919) 250-4128
FAX (919) 250-4131

Roger Worthington, P.E. UTILITIES SECTION ENGINEER
Carl Barclay, P.E. UTILITIES SQUAD LEADER PROJECT ENGINEER
Bo Hemphill, P.E. UTILITIES PROJECT DESIGNER

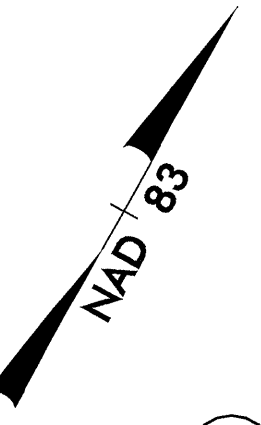
23-APR-2009 10:36
r:\utilities\rdy\ut\proj\b4137_ut_title_uc1.psh.dgn
\$\$\$\$\$USERNAME\$\$\$\$\$



UTILITY CONSTRUCTION



1
 JEFFERSON L. SUGG
 DB 2014 PG 331



8
 OMA T. O'CONNEL TRUST
 DB 1478 PG 957

ABANDON 208' 6" UTILITY PIPE
 ABANDON ALL PIPE FROM LAST
 CONNECTION TO EXISTING END

REBECCA J. & OT TRUELOVE
 DB 737 PG 9

PROP. 12' 6" WATER LINE
 PROP. 6" VALVE
 SEE DETAIL A

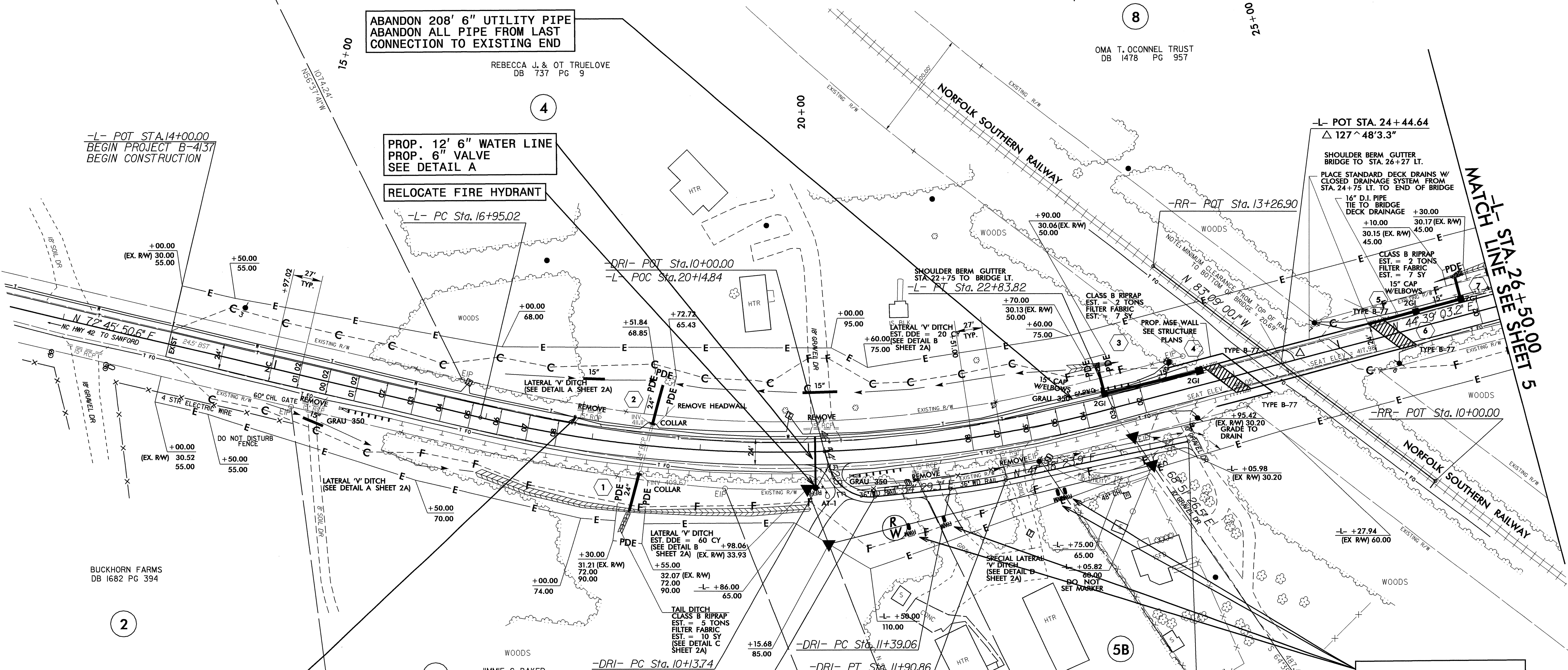
RELOCATE FIRE HYDRANT

-L- POT STA. 14+00.00
 BEGIN PROJECT B-4137
 BEGIN CONSTRUCTION

-L- POT STA. 24+44.64
 Δ 127° 48' 33"

SHOULDER BERM GUTTER
 BRIDGE TO STA. 26+27 LT.
 PLACE STANDARD DECK DRAINS W/
 CLOSED DRAINAGE SYSTEM FROM
 STA. 24+75 LT. TO END OF BRIDGE

MATCH LINE SEE SHEET 5



BUCKHORN FARMS
 DB 1682 PG 394

2

NOTE: ACCORDING TO INFORMATION
 PROVIDED BY THE OWNER, THE
 LOCATION OF THE WATER LINE IS
 SHOWN INCORRECTLY. THE WATER LINE
 IS LOCATED ON THE SOUTH
 SHOULDER OF THE ROAD.

-L-		-DRI-	
PI Sta 19+95.47	PI Sta 10+47.01	PI Sta 11+64.98	PI Sta 13+16.20
Δ = 28° 06' 47.4" (LT)	Δ = 79° 30' 38.0" (LT)	Δ = 5° 56' 05.4" (LT)	Δ = 63° 30' 09.7" (RT)
D = 4' 46" 28.7"	D = 143' 14" 22.0"	D = 11' 27" 33.0"	D = 114' 35" 29.6"
L = 588.80'	L = 55.51'	L = 51.79'	L = 55.42'
T = 300.45'	T = 33.27'	T = 25.92'	T = 30.94'
R = 1,200.00'	R = 40.00'	R = 500.00'	R = 50.00'
e = 0.08			
RO = 216'			

4 RELOCATE WATER METER

7

JOHN FERGUSON
 DB 2429 PG 559

6

JOHNNY CARROLL
 DB 2231 PG 834

ROBERT W. HORNER, JR.
 DB 2378 PG 947

5B

KEITH M. BROWN AND
 JOHNNY M. CARROLL
 DB 2205 PG 01

5

JAMES W. RACKLEY, JR.
 DB 2378 PG 396

5A

5/14/09

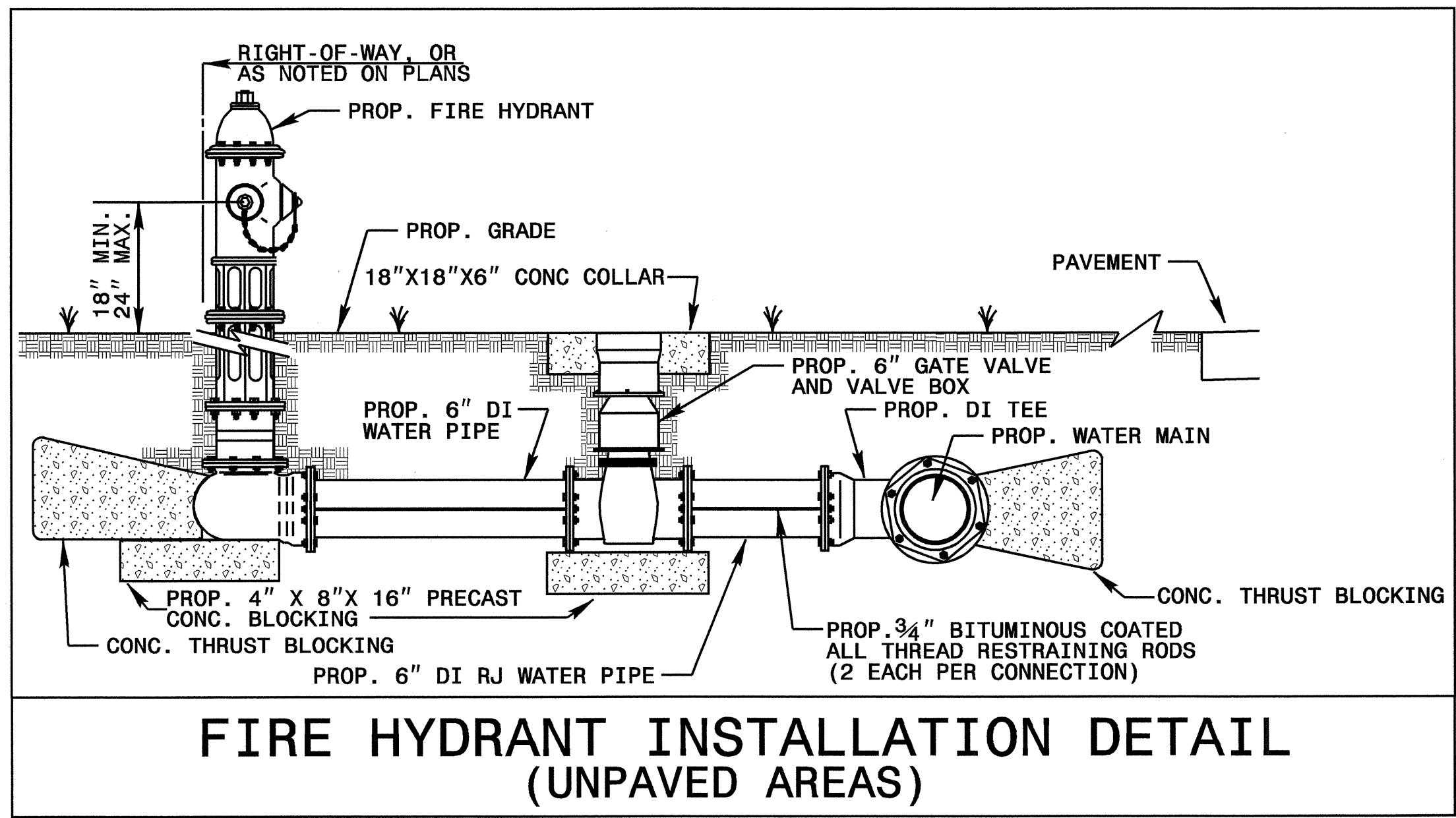
13-AUG-2009 16:33
 r:\utility\B-4137\UC-2-psht.dgn

5/14/99

PROJECT REFERENCE NO.	SHEET NO.
B-4137	UC-3
DESIGNED BY: BH	
DRAWN BY: BH	
CHECKED BY: CAB	
APPROVED BY: CAB	
REVISED:	
NORTH CAROLINA DEPARTMENT OF TRANSPORTATION UTILITIES ENGINEERING SEC. PHONE: (919)250-4128 FAX: (919)250-4119	
UTILITY CONSTRUCTION PLANS ONLY	

UTILITY CONSTRUCTION

MAXIMUM TRENCH WIDTH AT TOP OF PIPE			
NOMINAL PIPE SIZE (INCHES)	TRENCH WIDTH (INCHES)	NOMINAL PIPE SIZE (INCHES)	TRENCH WIDTH (INCHES)
4	28	20	44
6	30	24	48
8	32	30	54
10	34	36	60
12	36	42	66
14	38	48	72
16	40	54	78
18	42		



21-APR-2009 13:59 o:\b4137_ut_uct_uc3.dgn
 338135109

09/08/99

TIP PROJECT: B-4137

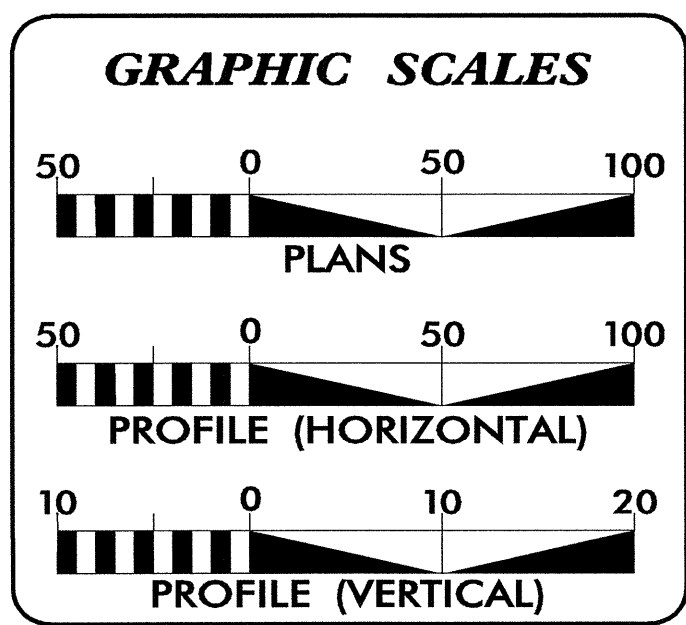
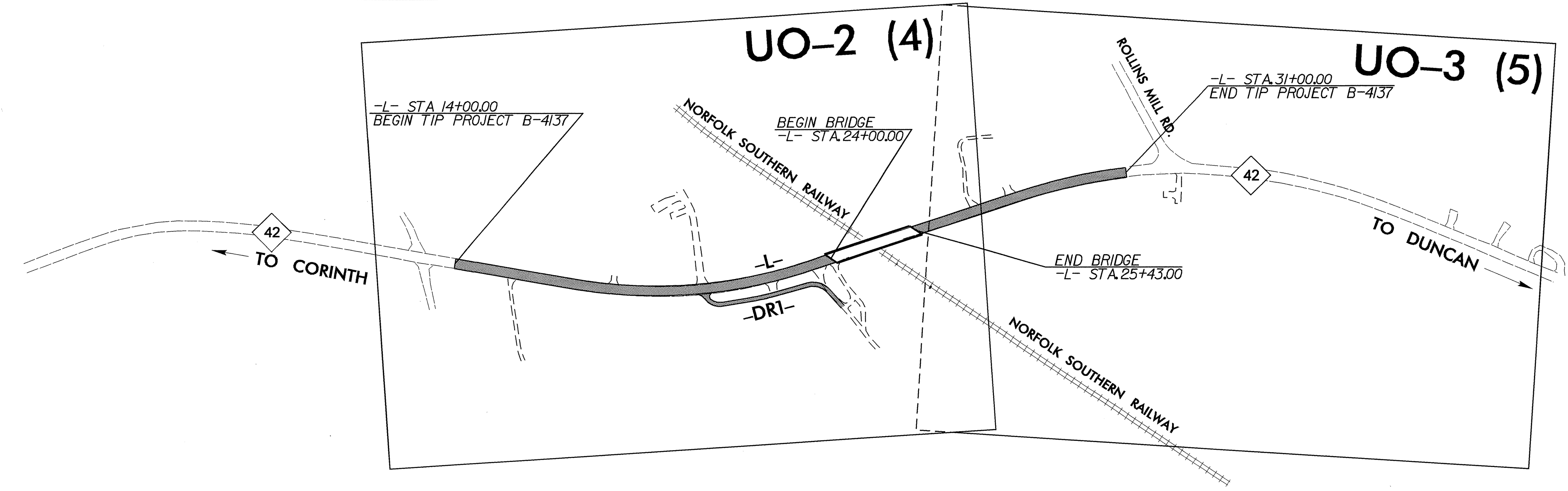
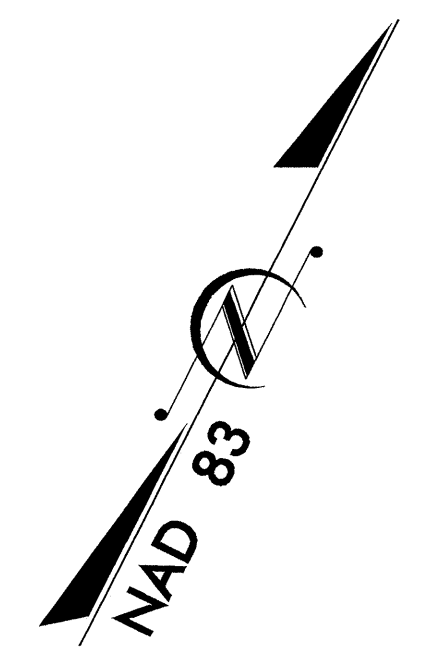
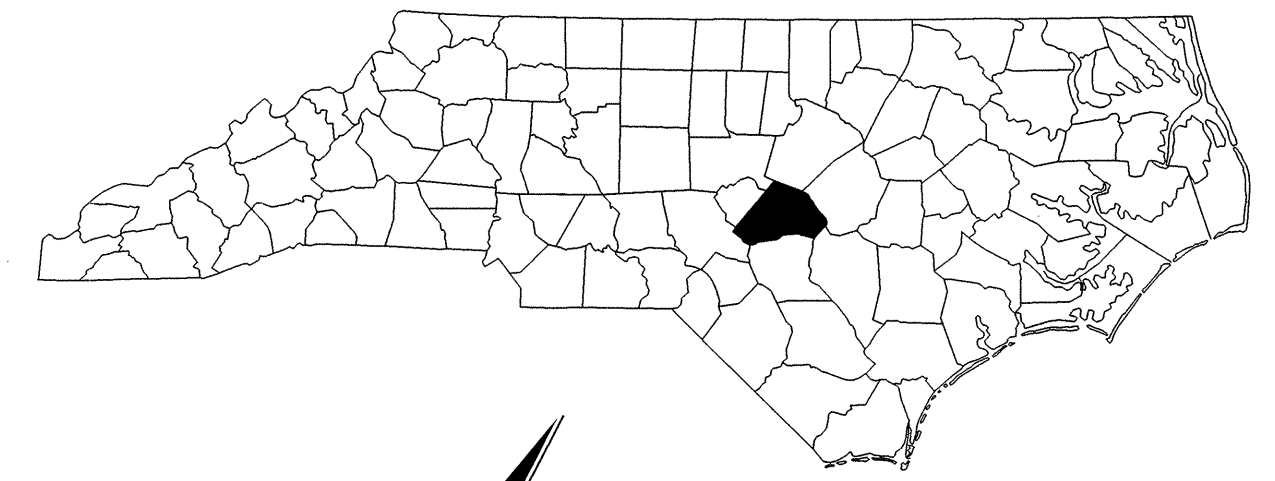
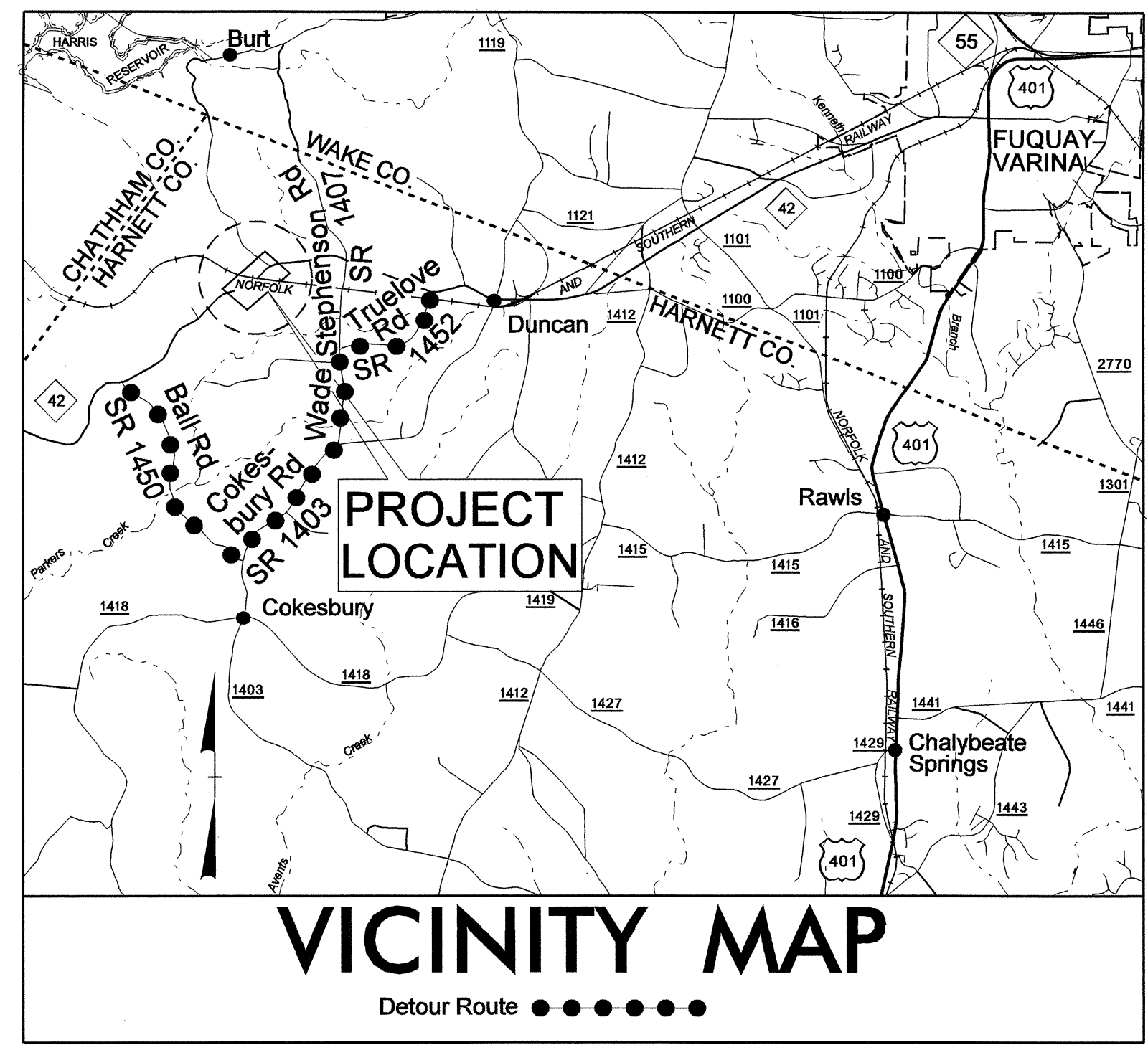
T.I.P. NO.	SHEET NO.
B-4137	UO-1

STATE OF NORTH CAROLINA
DIVISION OF HIGHWAYS

**UTILITIES BY OTHERS PLANS
HARNETT COUNTY**

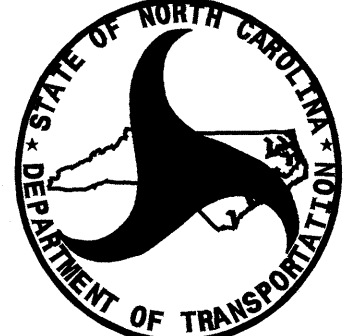
**LOCATION: BRIDGE No. 35 OVER NORFOLK
AND SOUTHERN RAILROAD ON NC 42**

TYPE OF WORK: POWER AND TELEPHONE



INDEX OF SHEETS	
SHEET NO.	DESCRIPTION
UO-1	TITLE SHEET
UO-2 THRU UO-3	UTILITIES BY OTHERS PLAN SHEETS

UTILITY OWNERS ON PROJECT
(1) POWER - PROGRESS ENERGY
(2) TELEPHONE - EMBARQ

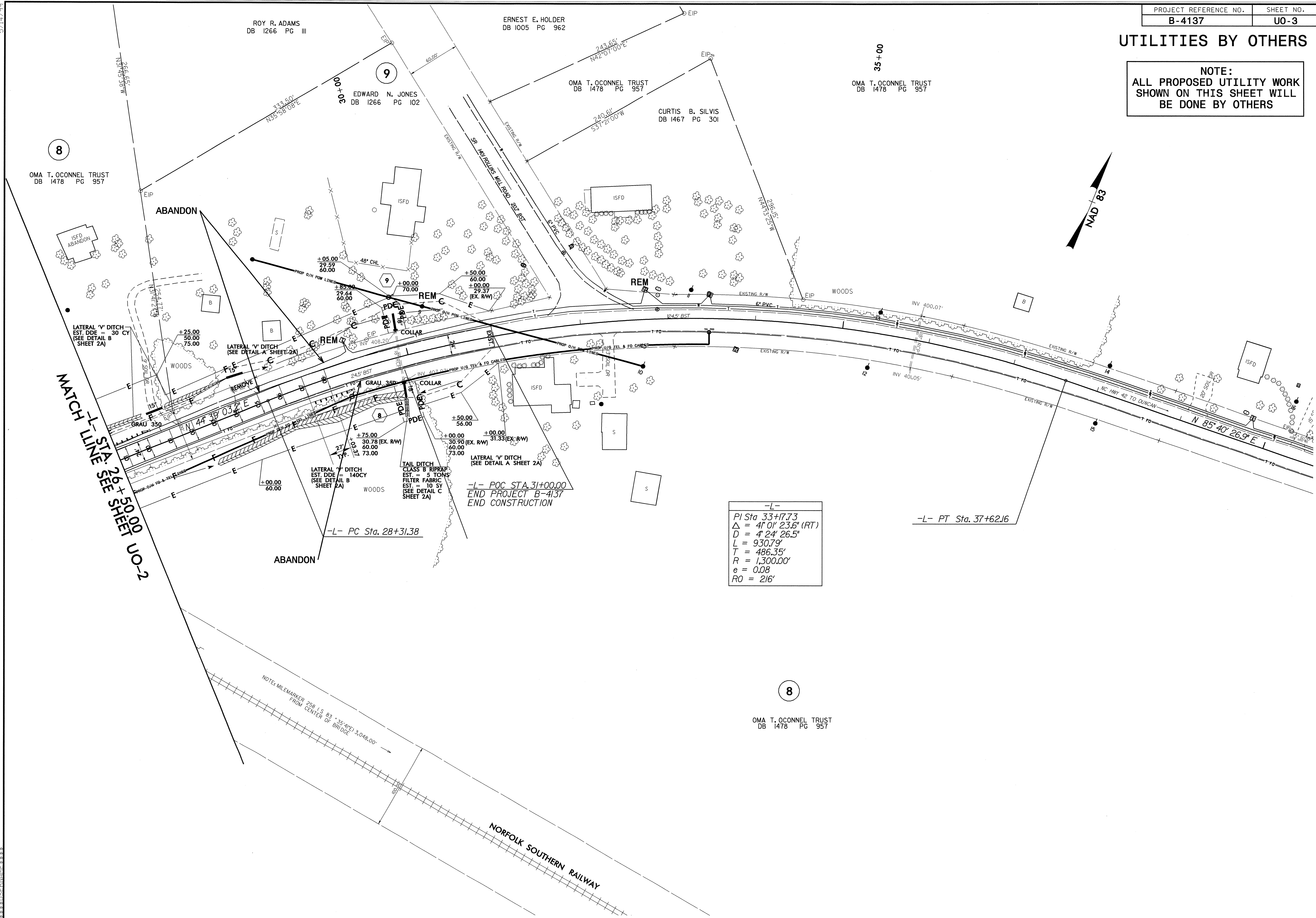

 PREPARED IN THE OFFICE OF:
**DIVISION OF HIGHWAYS
UTILITIES ENGINEERING
SECTION**
 1591 MAIL SERVICES CENTER
 RALEIGH NC 27699-1591
 PHONE (919) 250-4128
 FAX (919) 250-4151

Roger Worthington, P.E. UTILITIES SECTION ENGINEER
Carl Barclay, P.E. UTILITIES SQUAD LEADER PROJECT ENGINEER
Bo Hemphill, P.E. UTILITIES PROJECT DESIGNER

22-APR-2009 18:01
 r:\utilities\rdy\ut\proj\B4137\ut_title_uo1_psh.dgn
 \$\$\$USERNAME\$\$\$

UTILITIES BY OTHERS

NOTE:
ALL PROPOSED UTILITY WORK
SHOWN ON THIS SHEET WILL
BE DONE BY OTHERS



-L-

PI Sta	33+17.73
Δ	4° 0' 23.6" (RT)
D	4' 24' 26.5"
L	930.79'
T	486.35'
R	1,300.00'
e	0.08
RO	216'

8

OMA T. O'CONNEL TRUST
DB 1478 PG 957

MATCH -L- LINE SEE SHEET NO-2
36+50.00

ROY R. ADAMS
DB 1266 PG III

ERNEST E. HOLDER
DB 1005 PG 962

EDWARD N. JONES
DB 1266 PG 102

OMA T. O'CONNEL TRUST
DB 1478 PG 957

CURTIS B. SILVIS
DB 1467 PG 301

OMA T. O'CONNEL TRUST
DB 1478 PG 957

OMA T. O'CONNEL TRUST
DB 1478 PG 957

ABANDON

ABANDON

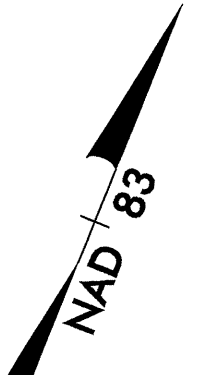
-L- POC STA. 31+00.00
END PROJECT B-4137
END CONSTRUCTION

-L- PC Sta. 28+31.38

-L- PT Sta. 37+62.16

NOTE: MILEMARKER 258 (S.S. 83 +35' (1/2) 3,048.00'
FROM CENTER OF BRIDGE

NORFOLK SOUTHERN RAILWAY



5/14/99

22-APR-2009 17:57
\\fs1\proj\11\114137\ut_05_uo3_psh.dgn