

09/08/09

TIP PROJECT: U-4444AA

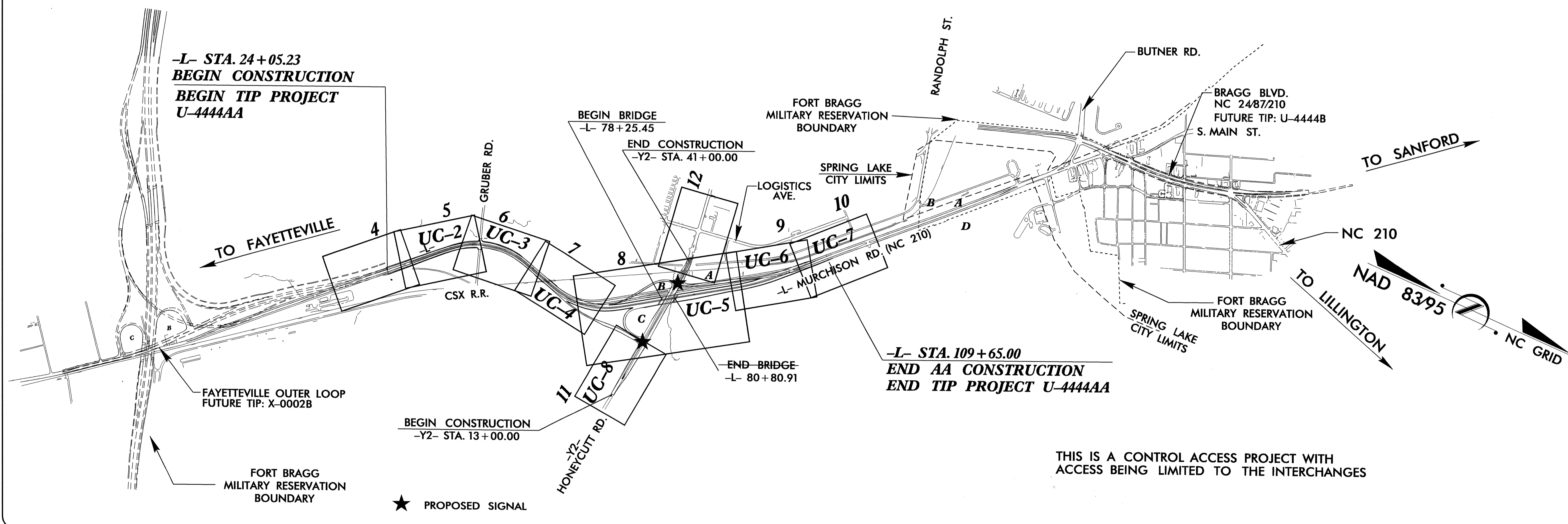
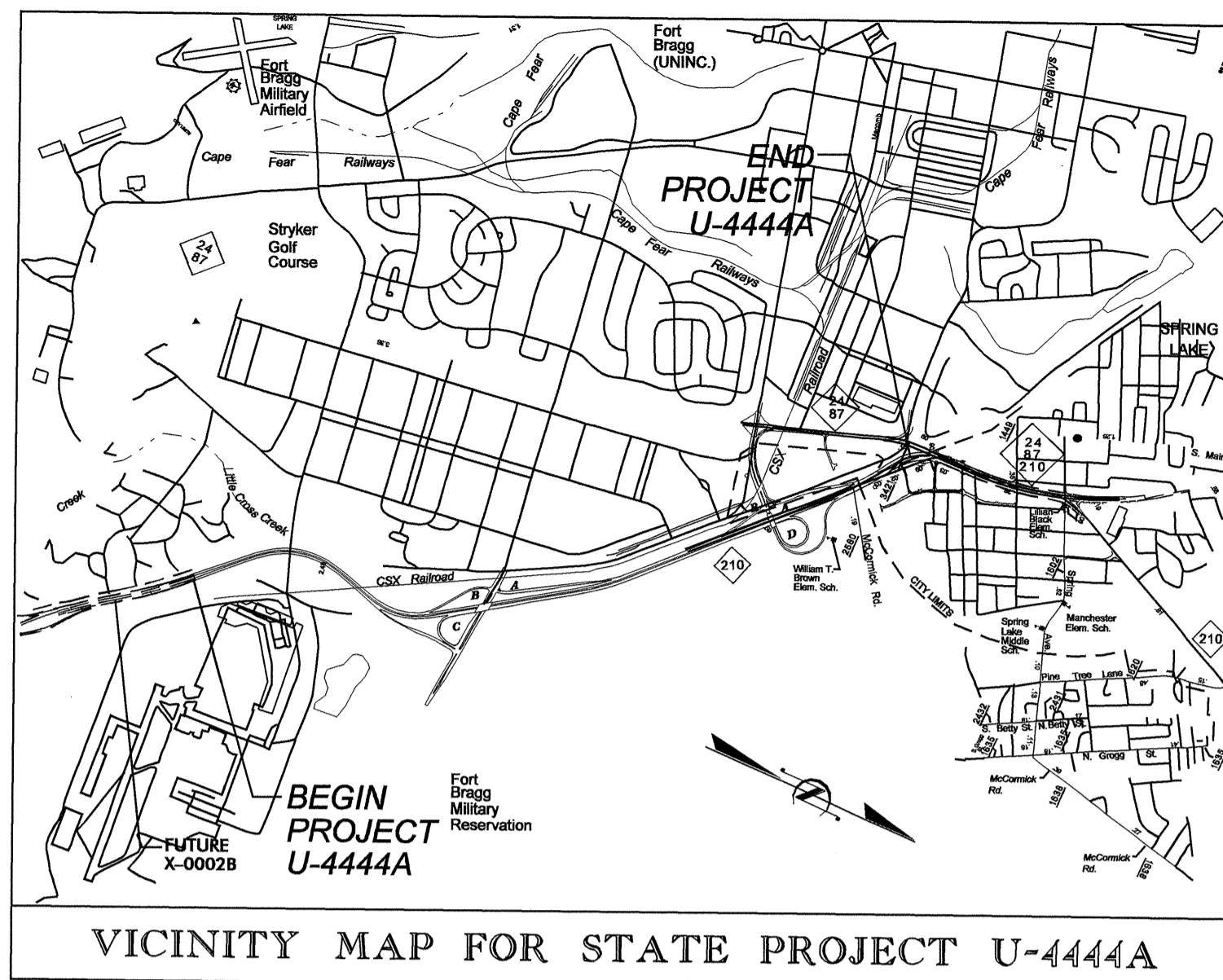
T.I.P. NO.	SHEET NO.
U-4444AA	UC-1

STATE OF NORTH CAROLINA
DIVISION OF HIGHWAYS

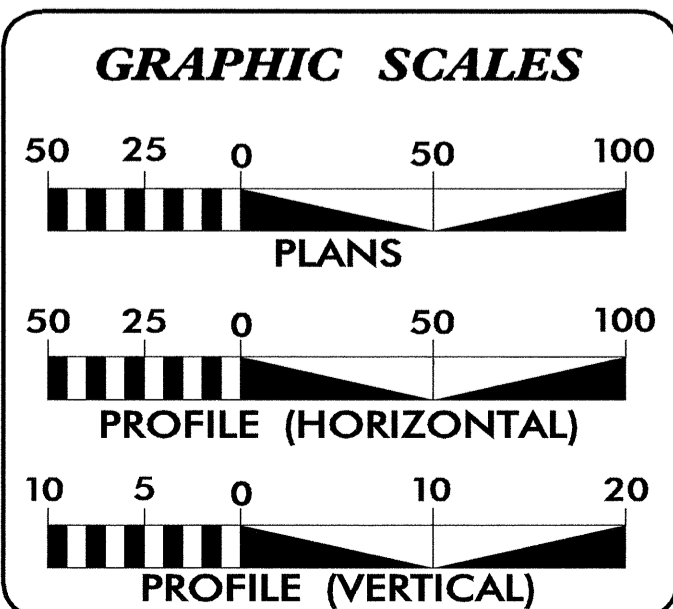
UTILITY CONSTRUCTION PLANS
CUMBERLAND COUNTY

LOCATION: NC 210 (MURCHISON ROAD) FROM FAYETTEVILLE OUTER LOOP
TO JUST NORTH OF HONEYCUTT ROAD

TYPE OF WORK: WATER LINE AND SANITARY SEWER FORCE MAIN

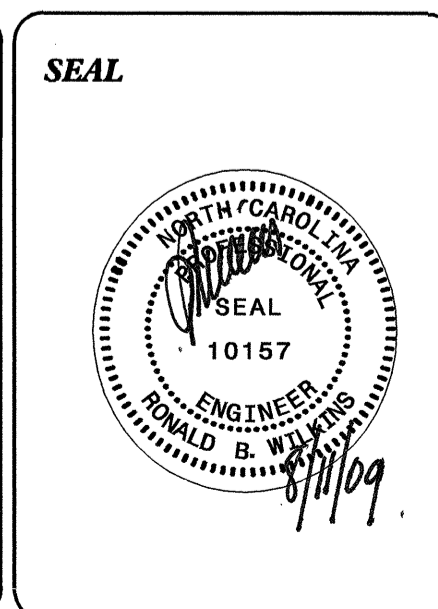


THIS IS A CONTROL ACCESS PROJECT WITH
ACCESS BEING LIMITED TO THE INTERCHANGES



SHEET NO.	DESCRIPTION
UC-1	TITLE SHEET
UC-2 THRU UC-8	UTILITY CONSTRUCTION PLAN SHEETS AND DETAILS

- WATER AND SEWER OWNERS ON PROJECT**
- (1) WATER - PUBLIC WORKS COMMISSION OF THE CITY OF FAYETTEVILLE (PWC)
 - (2) WATER - FORT BRAGG OLD NORTH UTILITIES, INC.
 - (3) SANITARY SEWER - FORT BRAGG OLD NORTH UTILITIES, INC.
 - (4) TELEPHONE - U.S. GOVERNMENT FORT BRAGG



PREPARED IN THE OFFICE OF:
**DIVISION OF HIGHWAYS
UTILITIES ENGINEERING
SECTION**

1591 MAIL SERVICES CENTER
RALEIGH NC 27699-1591
PHONE (919) 250-4128
FAX (919) 250-4119

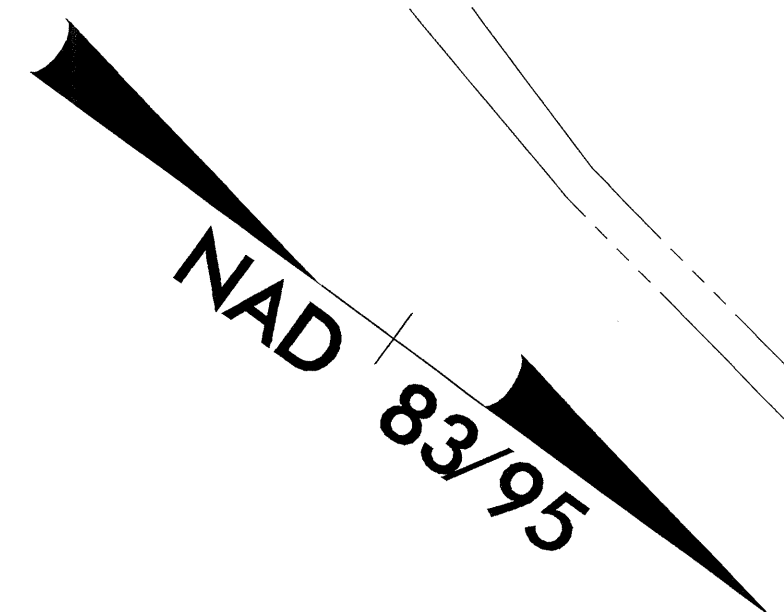
Roger Worthington, P.E. UTILITIES SECTION ENGINEER
R. B. Wilkins, P.E. UTILITIES SQUAD LEADER PROJECT ENGINEER
John A. Nigro, P.E. UTILITIES PROJECT DESIGNER

I:\AUG-2009_07\00
F:\Utilities\G.dgn ut\proj\U4444aa-ut_title_ucl_psh.dgn
\$\$\$\$\$USERNAME\$\$\$\$\$

5/14/95

09-JUL-2009 16:55
\\u:\utility\proj\UC-2\U4444aa.ut_5.uc2.psh.dgn

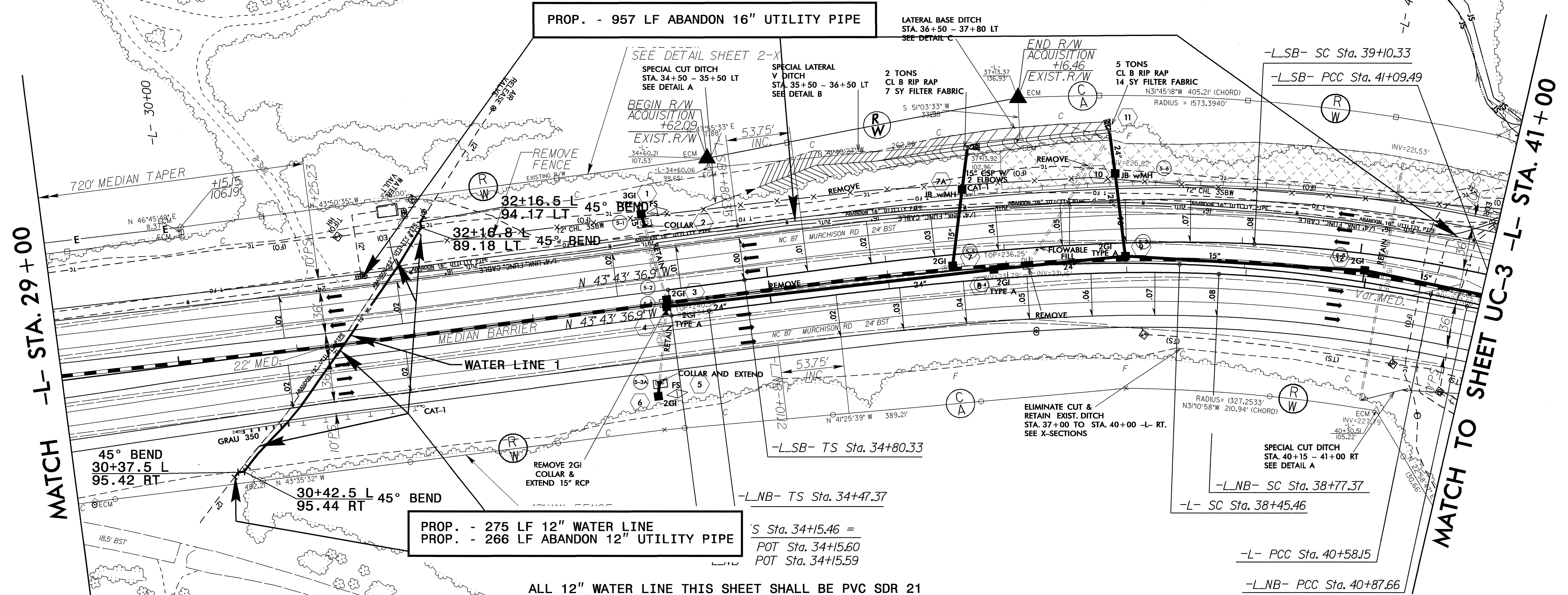
PROJECT REFERENCE NO.	SHEET NO.
U-4444AA	UC-2
DESIGNED BY: JAN	
DRAWN BY: JAN	
CHECKED BY: RBW	
APPROVED BY: RBW	
REVISED:	
NORTH CAROLINA DEPARTMENT OF TRANSPORTATION	
UTILITIES ENGINEERING SEC. PHONE: (919) 250-4128 FAX: (919) 250-4119	
UTILITY CONSTRUCTION PLANS ONLY	



FORT BRAGG MILITARY RESERVATION

UTILITY CONSTRUCTION

PIs Sta 37+02.54 Os = 9' 28' 33.0" Ls = 430.00' LT = 287.08' ST = 143.71'	PI Sta 39+52.05 Δ = 9' 22' 26.2" (RT) D = 4' 24' 26.5" L = 212.69' T = 106.58' R = 1,300.00' e = 8%	PI Sta 44+73.31 Δ = 3' 44' 48.2" (RT) D = 3' 55' 27.7" L = 808.96' T = 415.16' R = 1,460.00' e = 8%	PIs Sta 50+27.53 Os = 9' 25' 06.5" Ls = 480.00' LT = 320.45' ST = 160.41'
---	---	---	---



PROP. - 275 LF 12" WATER LINE
PROP. - 266 LF ABANDON 12" UTILITY PIPE

ALL 12" WATER LINE THIS SHEET SHALL BE PVC SDR 21

SECONDARY GEOGRID REINFORCEMENT

FORT BRAGG MILITARY RESERVATION

MATCH -L- STA. 29+00

MATCH TO SHEET UC-3 -L- STA. 41+00

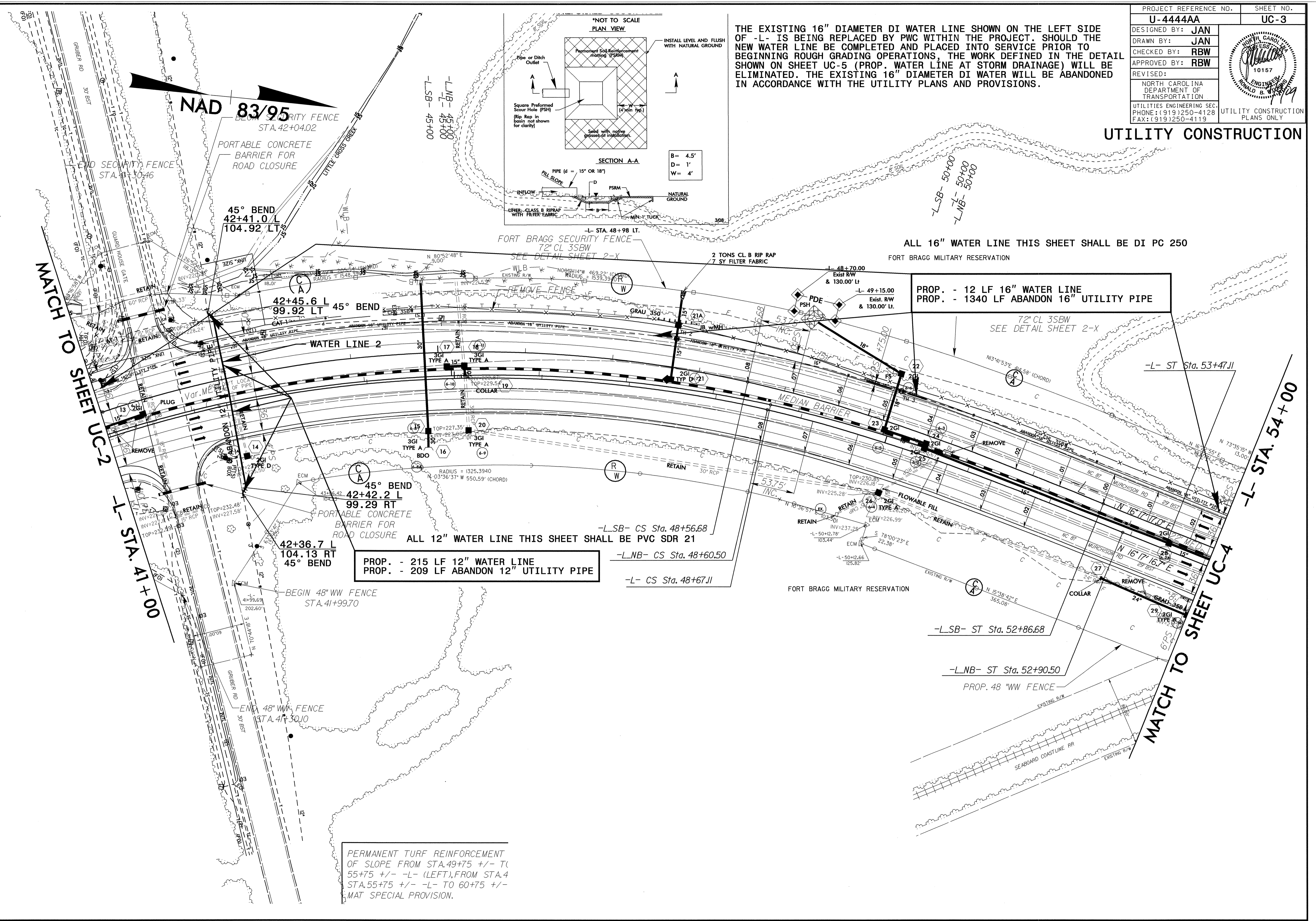
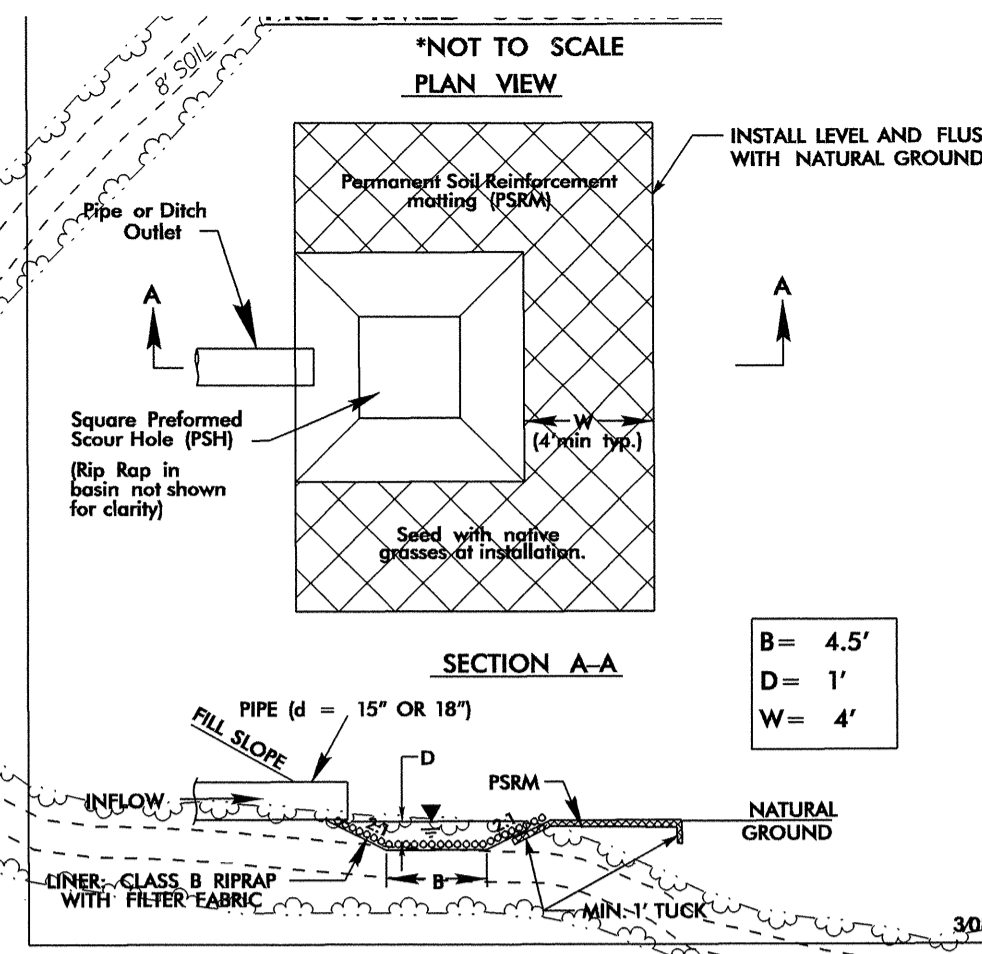
5/14/09

09-JUL-2009 13:50
r:\utility\psh\dwg\U-4444aa-ut-6-uc3_psh.dgn
\$\$\$\$\$USER\$

PROJECT REFERENCE NO.	SHEET NO.
U-4444AA	UC-3
DESIGNED BY: JAN	
DRAWN BY: JAN	
CHECKED BY: RBW	
APPROVED BY: RBW	
REVISED:	
NORTH CAROLINA DEPARTMENT OF TRANSPORTATION UTILITIES ENGINEERING SEC. PHONE: (919)250-4128 FAX: (919)250-4119	
UTILITY CONSTRUCTION PLANS ONLY	

UTILITY CONSTRUCTION

THE EXISTING 16" DIAMETER DI WATER LINE SHOWN ON THE LEFT SIDE OF -L- IS BEING REPLACED BY PVC WITHIN THE PROJECT. SHOULD THE NEW WATER LINE BE COMPLETED AND PLACED INTO SERVICE PRIOR TO BEGINNING ROUGH GRADING OPERATIONS, THE WORK DEFINED IN THE DETAIL SHOWN ON SHEET UC-5 (PROP. WATER LINE AT STORM DRAINAGE) WILL BE ELIMINATED. THE EXISTING 16" DIAMETER DI WATER WILL BE ABANDONED IN ACCORDANCE WITH THE UTILITY PLANS AND PROVISIONS.



ALL 16" WATER LINE THIS SHEET SHALL BE DI PC 250
 FORT BRAGG MILITARY RESERVATION

PROP. - 12 LF 16" WATER LINE
 PROP. - 1340 LF ABANDON 16" UTILITY PIPE

ALL 12" WATER LINE THIS SHEET SHALL BE PVC SDR 21
 PROP. - 215 LF 12" WATER LINE
 PROP. - 209 LF ABANDON 12" UTILITY PIPE

PERMANENT TURF REINFORCEMENT OF SLOPE FROM STA.49+75 +/- TO 55+75 +/- -L- (LEFT), FROM STA.4 STA.55+75 +/- -L- TO 60+75 +/- -L- MAT SPECIAL PROVISION.


MATCH TO SHEET UC-2

MATCH TO SHEET UC-4

-L- STA. 54+00

-L- STA. 41+00

5/14/99

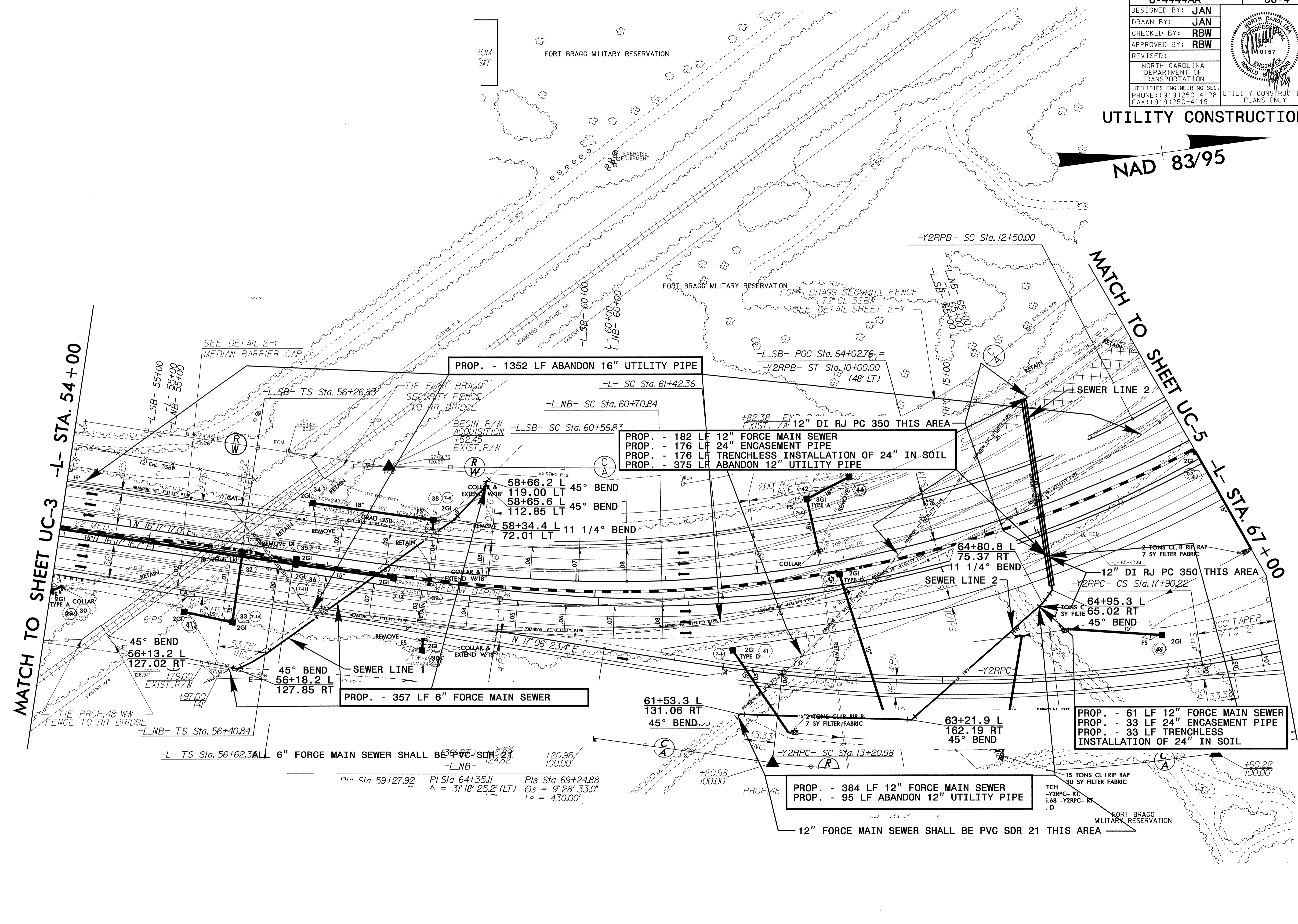
PROJECT REFERENCE NO.	SHEET NO.
U-4444AA	UC-4
DESIGNED BY: JAN	
DRAWN BY: JAN	
CHECKED BY: RBW	
APPROVED BY: RBW	
REVISED:	
NORTH CAROLINA DEPARTMENT OF TRANSPORTATION	
UTILITIES ENGINEERING SEC. PHONE: (919) 250-4128 FAX: (919) 250-4119	
UTILITY CONSTRUCTION PLANS ONLY	

UTILITY CONSTRUCTION

NAD 83/95

MATCH TO SHEET UC-3 -L- STA. 54+00

MATCH TO SHEET UC-5 -L- STA. 67+00



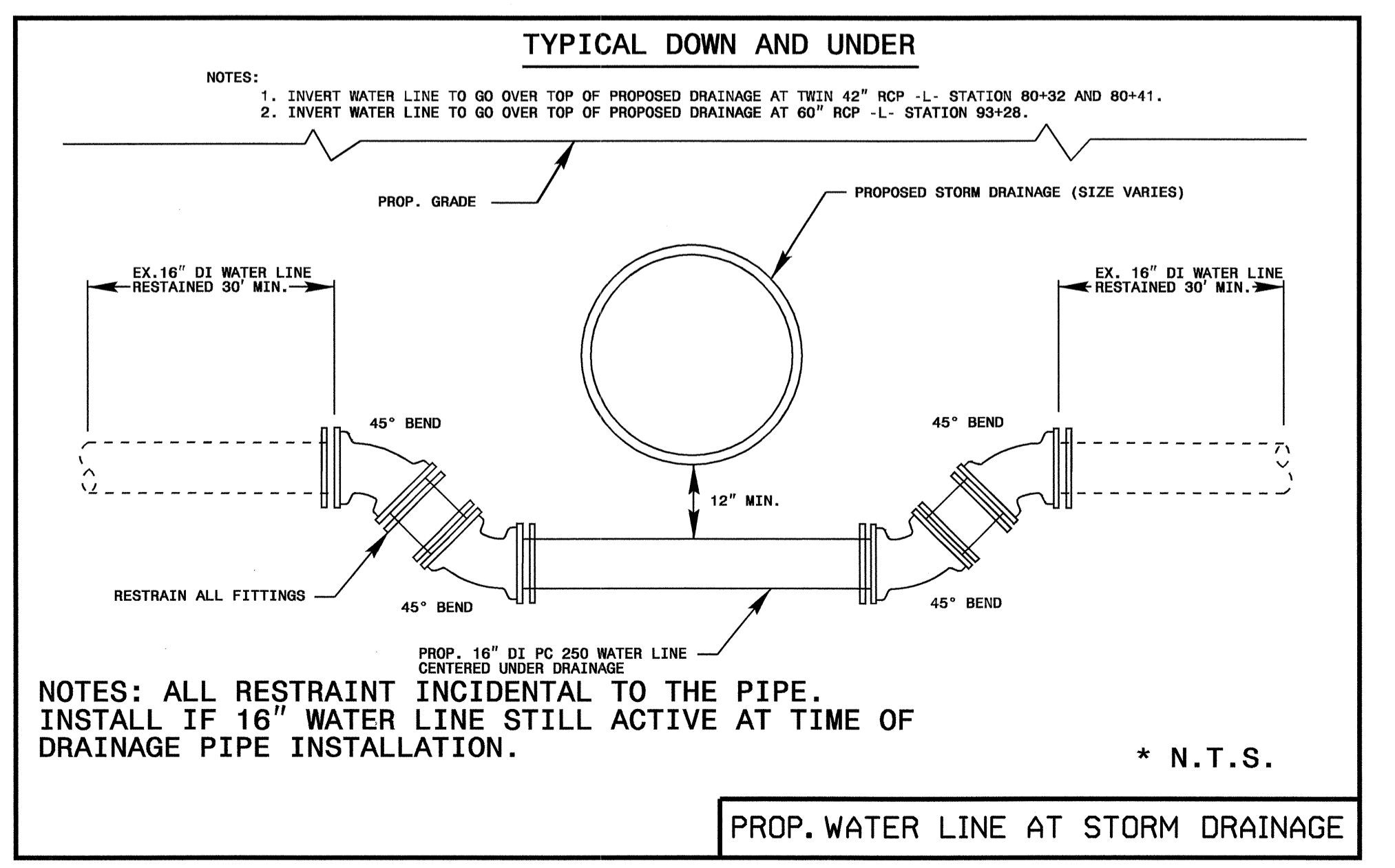
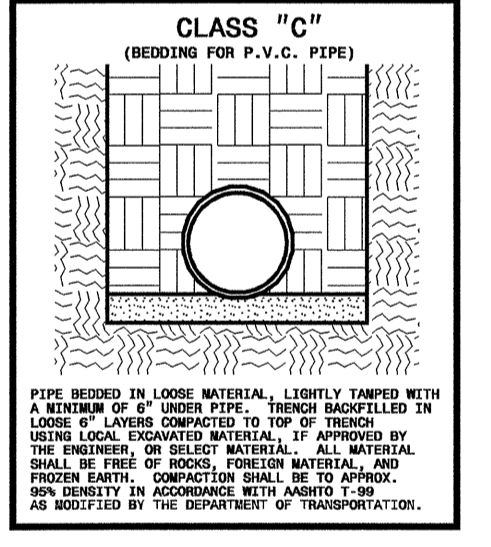
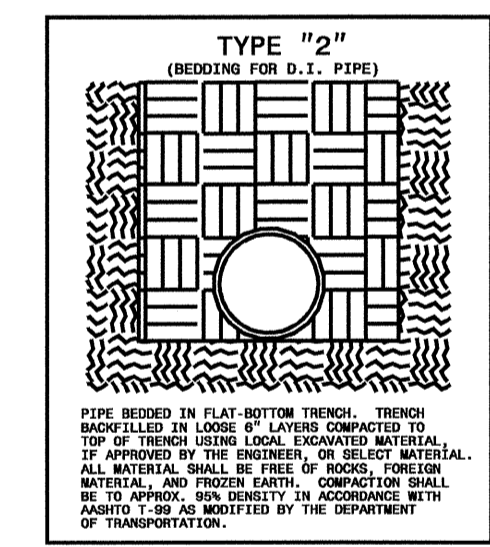
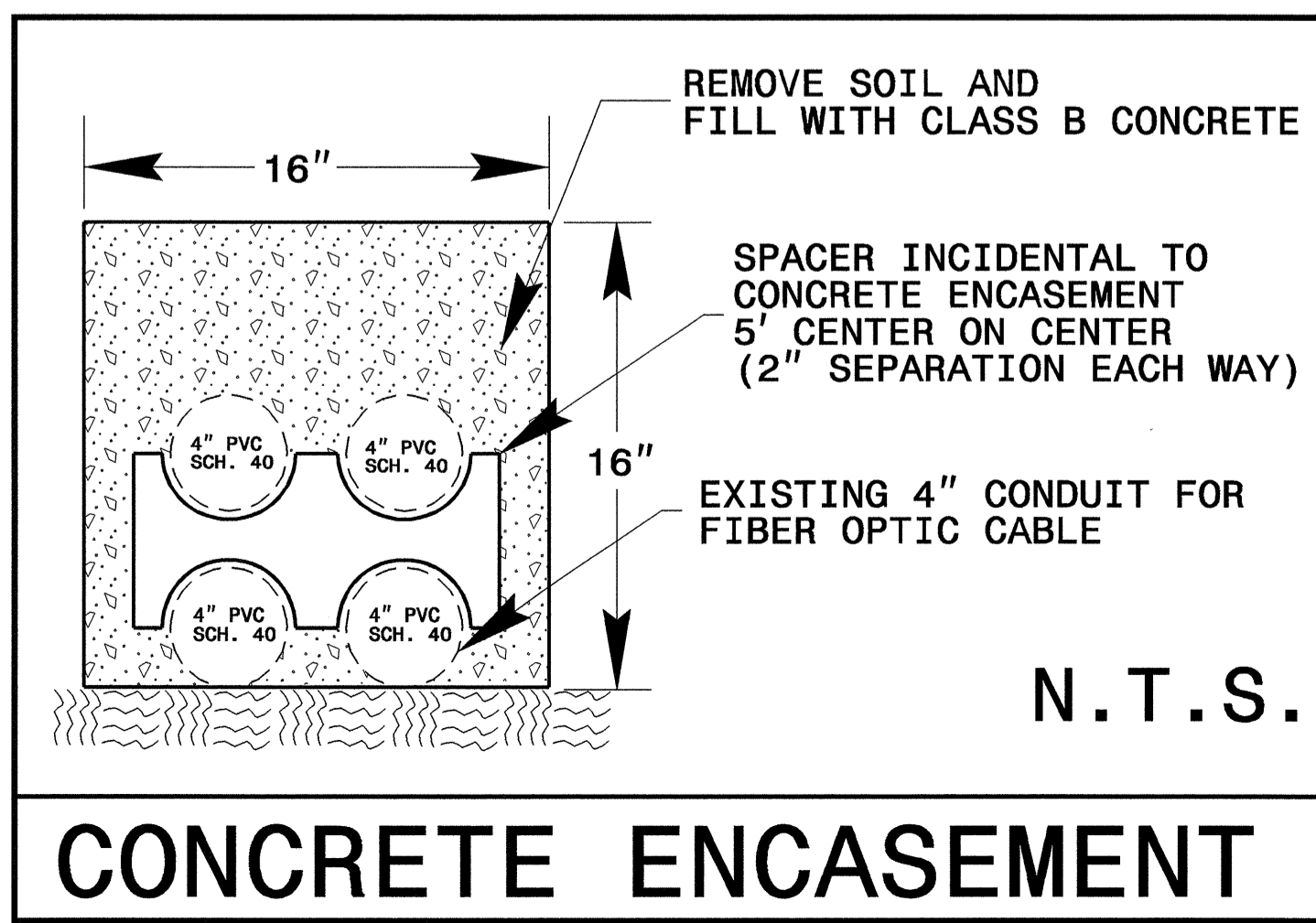
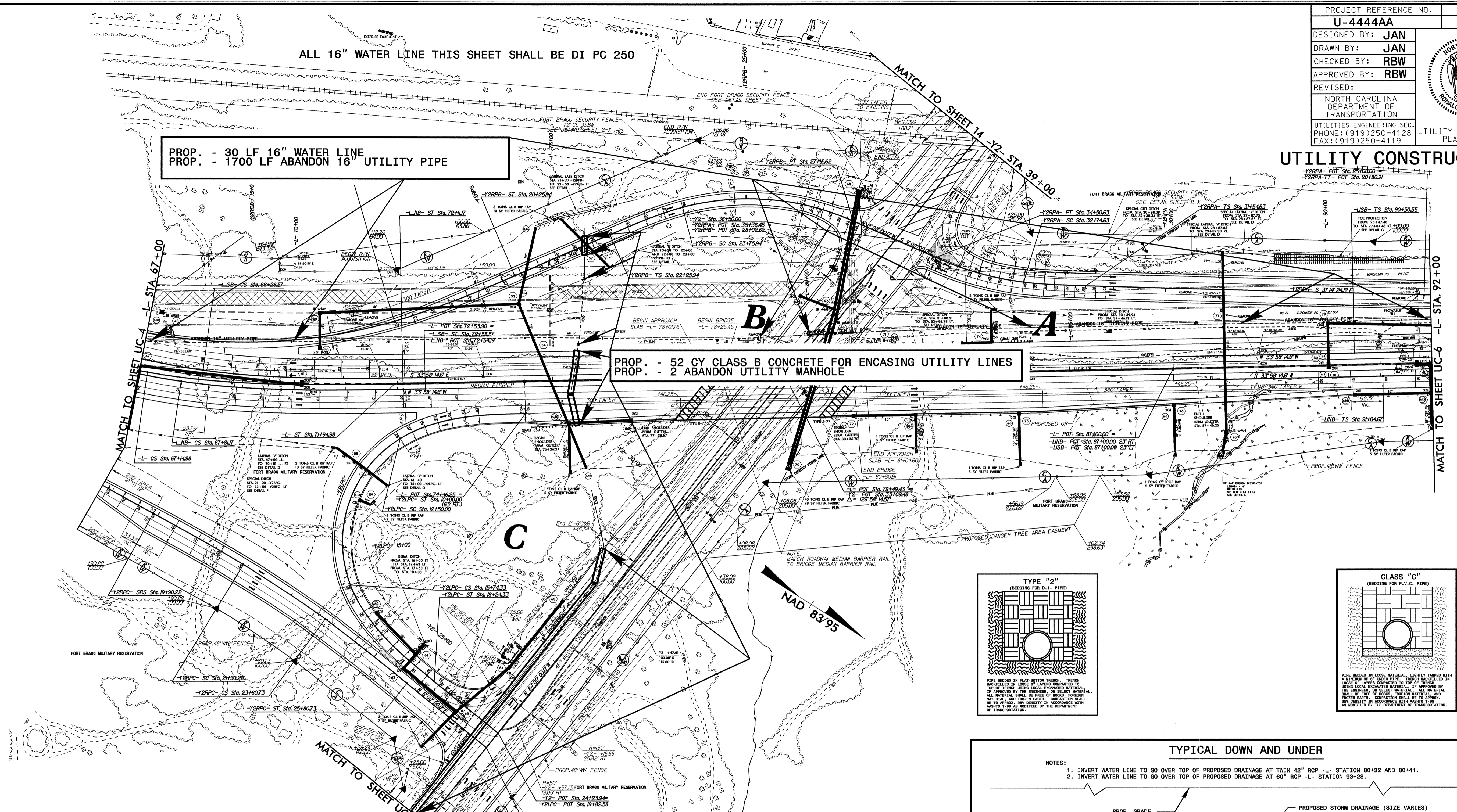
07-JUL-2009 16:37
I:\utilities\chout\proj\U4444aa.ut.7_uc4.psh.dgn

5/14/09

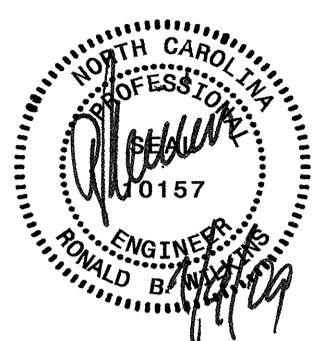
11-AUG-2009 08:36
utilities\chul\ut\proj\4444\ee.ut.8.uc5.esh.dgn
*****IS*****

PROJECT REFERENCE NO.	U-4444AA	SHEET NO.	UC-5
DESIGNED BY:	JAN		
DRAWN BY:	JAN		
CHECKED BY:	RBW		
APPROVED BY:	RBW		
REVISED:			
NORTH CAROLINA DEPARTMENT OF TRANSPORTATION		UTILITY CONSTRUCTION PLANS ONLY	
UTILITIES ENGINEERING SEC. PHONE: (919)250-4128 FAX: (919)250-4119			

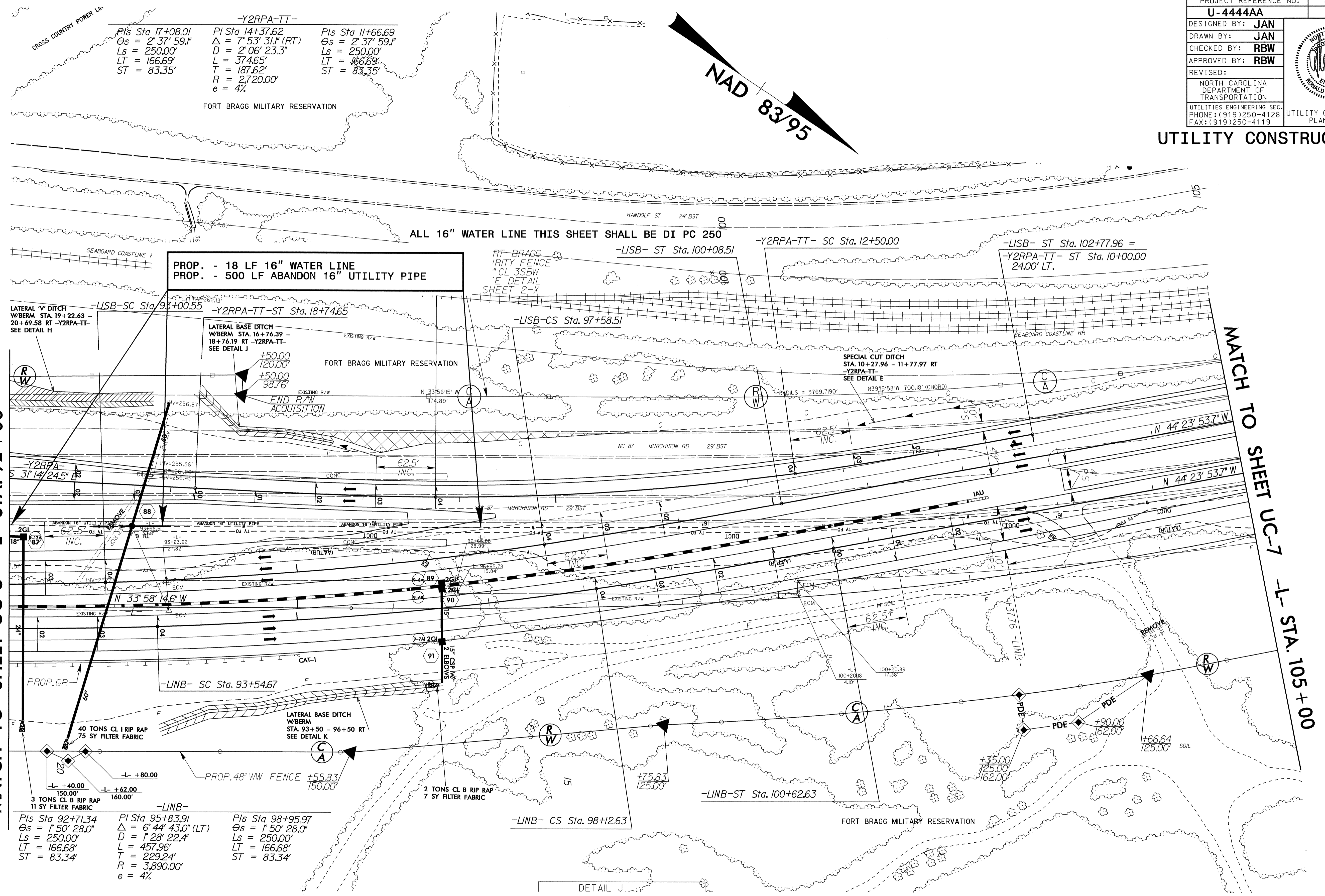
UTILITY CONSTRUCTION



07-JUL-2009 16:35 \\utilities\psh\dms\proj\4444aa\utl_9\uc6_psh.dgn

PROJECT REFERENCE NO. U-4444AA	SHEET NO. UC-6
DESIGNED BY: JAN	
DRAWN BY: JAN	
CHECKED BY: RBW	
APPROVED BY: RBW	
REVISED:	
NORTH CAROLINA DEPARTMENT OF TRANSPORTATION UTILITIES ENGINEERING SECTION PHONE: (919) 250-4128 FAX: (919) 250-4119	

UTILITY CONSTRUCTION



MATCH TO SHEET UC-5 -L- STA. 92+00

MATCH TO SHEET UC-7 -L- STA. 105+00

PROP. - 18 LF 16" WATER LINE
PROP. - 500 LF ABANDON 16" UTILITY PIPE

ALL 16" WATER LINE THIS SHEET SHALL BE DI PC 250

NAD 83/95

-Y2RPA-TT-

Pls Sta 17+08.01	PI Sta 14+37.62	Pls Sta 11+66.69
Θs = 2° 37' 59.1"	Δ = 7° 53' 31.1" (RT)	Θs = 2° 37' 59.1"
Ls = 250.00'	D = 2° 06' 23.3"	Ls = 250.00'
LT = 166.69'	L = 374.65'	LT = 166.69'
ST = 83.35'	T = 187.62'	ST = 83.35'
	R = 2,720.00'	
	e = 4%	

LATERAL V/DITCH
W/BERM STA. 19+22.63
20+69.58 RT -Y2RPA-TT-
SEE DETAIL H

LATERAL BASE DITCH
W/BERM STA. 16+76.39 -
18+76.19 RT -Y2RPA-TT-
SEE DETAIL J

SPECIAL CUT DITCH
STA. 10+27.96 - 11+77.97 RT
-Y2RPA-TT-
SEE DETAIL E

-LINB-

Pls Sta 92+71.34	PI Sta 95+83.91	Pls Sta 98+95.97
Θs = 1° 50' 28.0"	Δ = 6° 44' 43.0" (LT)	Θs = 1° 50' 28.0"
Ls = 250.00'	D = 1° 28' 22.4"	Ls = 250.00'
LT = 166.68'	L = 457.96'	LT = 166.68'
ST = 83.34'	T = 229.24'	ST = 83.34'
	R = 3,890.00'	
	e = 4%	

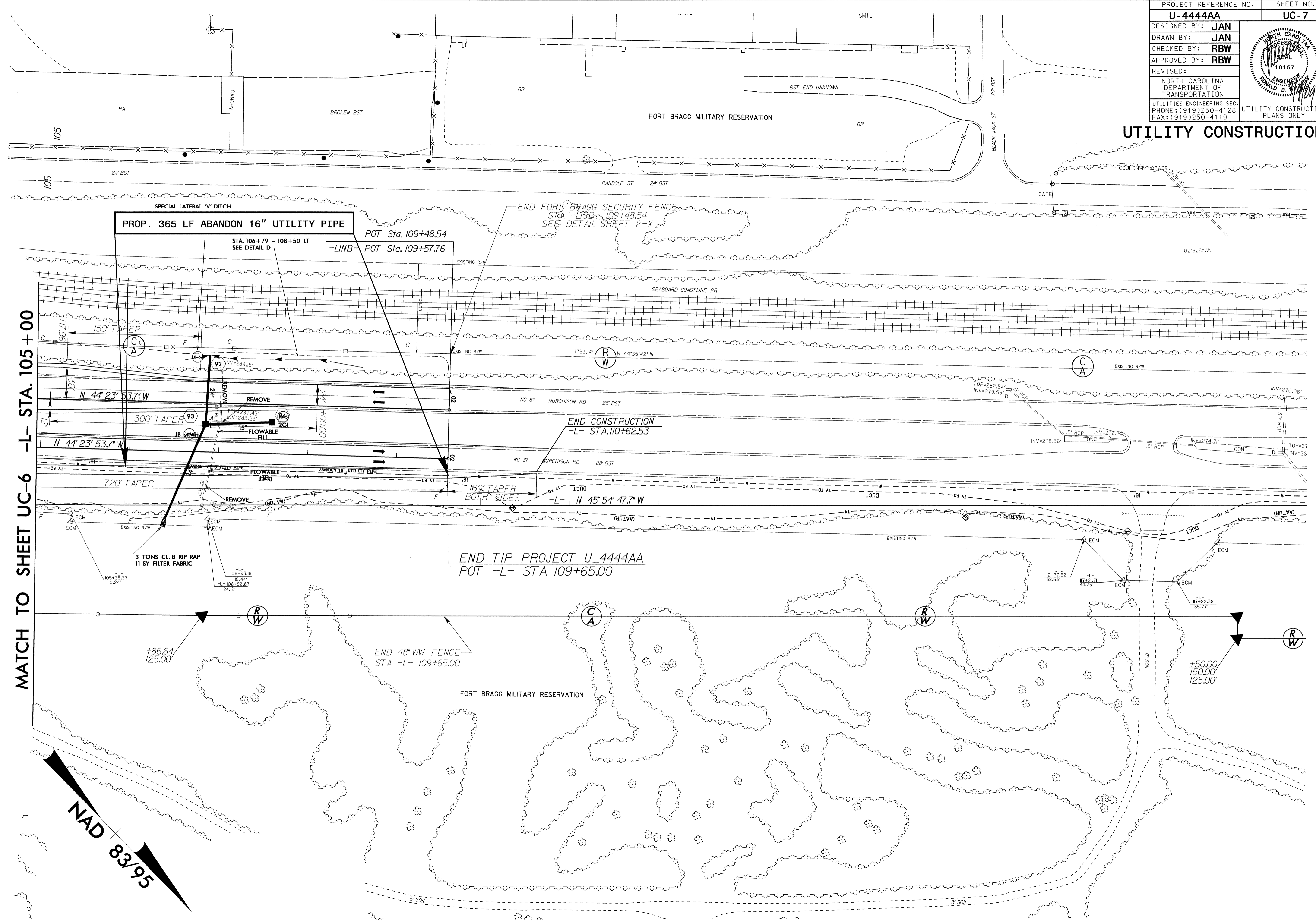
DETAIL J

5/14/09

07-JUL-2009 16:35
I:\utilities\cd\ut\proj\44444\44444\ut_10_uc7_psh.dgn

PROJECT REFERENCE NO.	U-4444AA	SHEET NO.	UC-7
DESIGNED BY:	JAN		
DRAWN BY:	JAN		
CHECKED BY:	RBW		
APPROVED BY:	RBW		
REVISED:			
NORTH CAROLINA DEPARTMENT OF TRANSPORTATION		UTILITY CONSTRUCTION PLANS ONLY	
UTILITIES ENGINEERING SEC. PHONE: (919) 250-4128 FAX: (919) 250-4119			

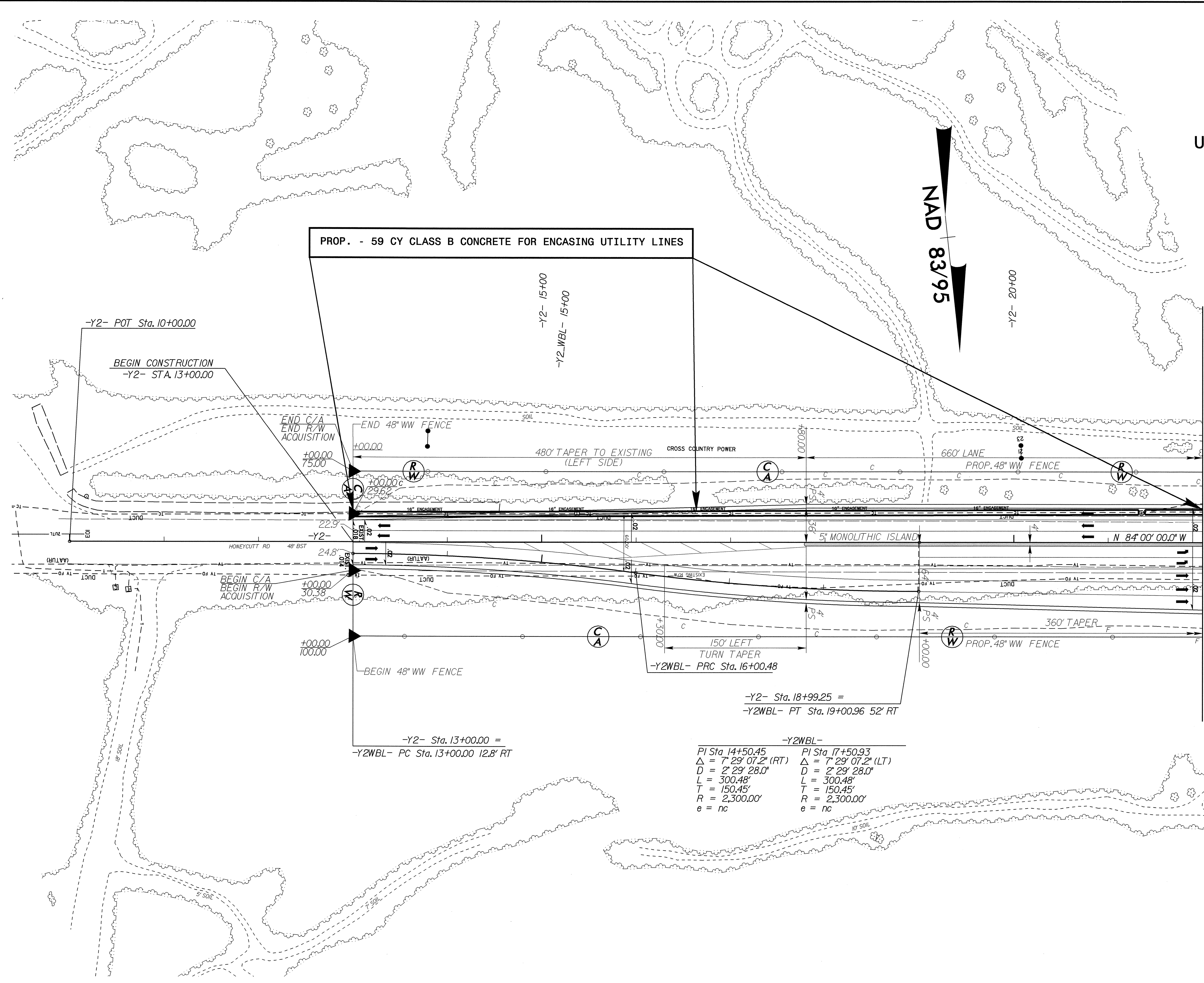
UTILITY CONSTRUCTION



MATCH TO SHEET UC-6 -L- STA. 105+00

UTILITY CONSTRUCTION

5/14/99
I:\AUC-2009_0838\U4444aa\ut-11.uc8.psh.dgn



PROP. - 59 CY CLASS B CONCRETE FOR ENCASING UTILITY LINES

MATCH TO SHEET UC-5 -Y2- STA. 22+00

-Y2WBL-	
PI Sta 14+50.45	PI Sta 17+50.93
Δ = 7° 29' 07.2" (RT)	Δ = 7° 29' 07.2" (LT)
D = 2' 29' 28.0"	D = 2' 29' 28.0"
L = 300.48'	L = 300.48'
T = 150.45'	T = 150.45'
R = 2,300.00'	R = 2,300.00'
e = nc	e = nc

-Y2- Sta. 13+00.00 =
-Y2WBL- PC Sta. 13+00.00 12.8' RT

-Y2- Sta. 18+99.25 =
-Y2WBL- PT Sta. 19+00.96 52' RT

T.I.P. NO.	SHEET NO.
U-4444AA	UO-1

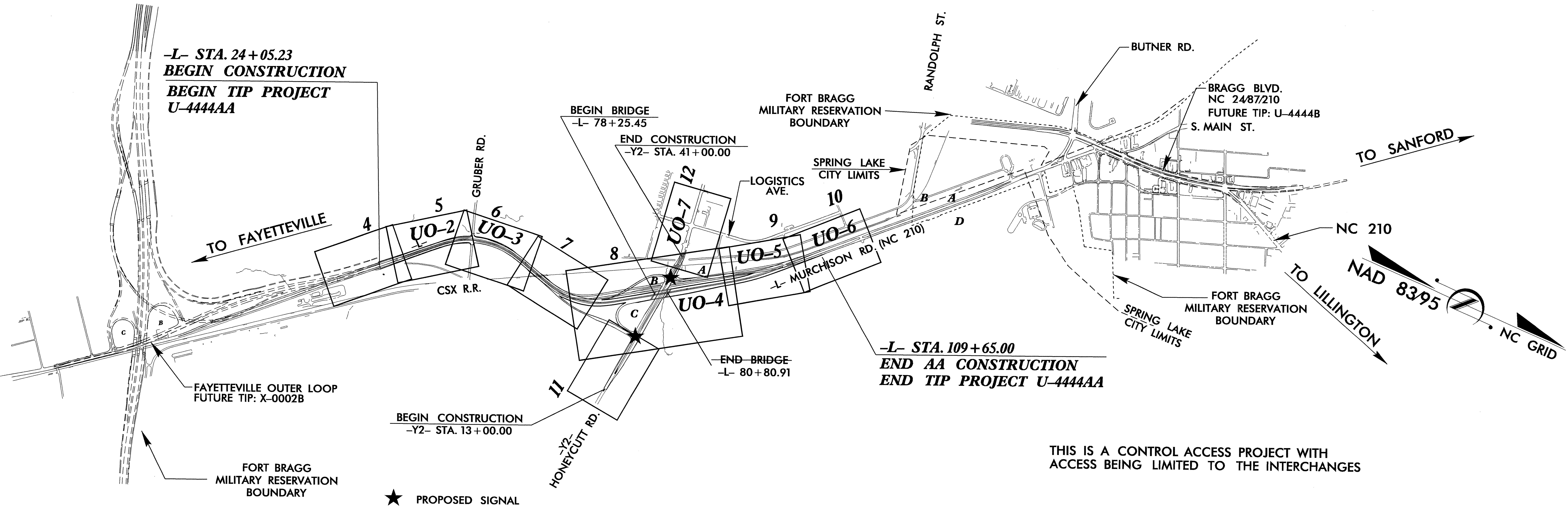
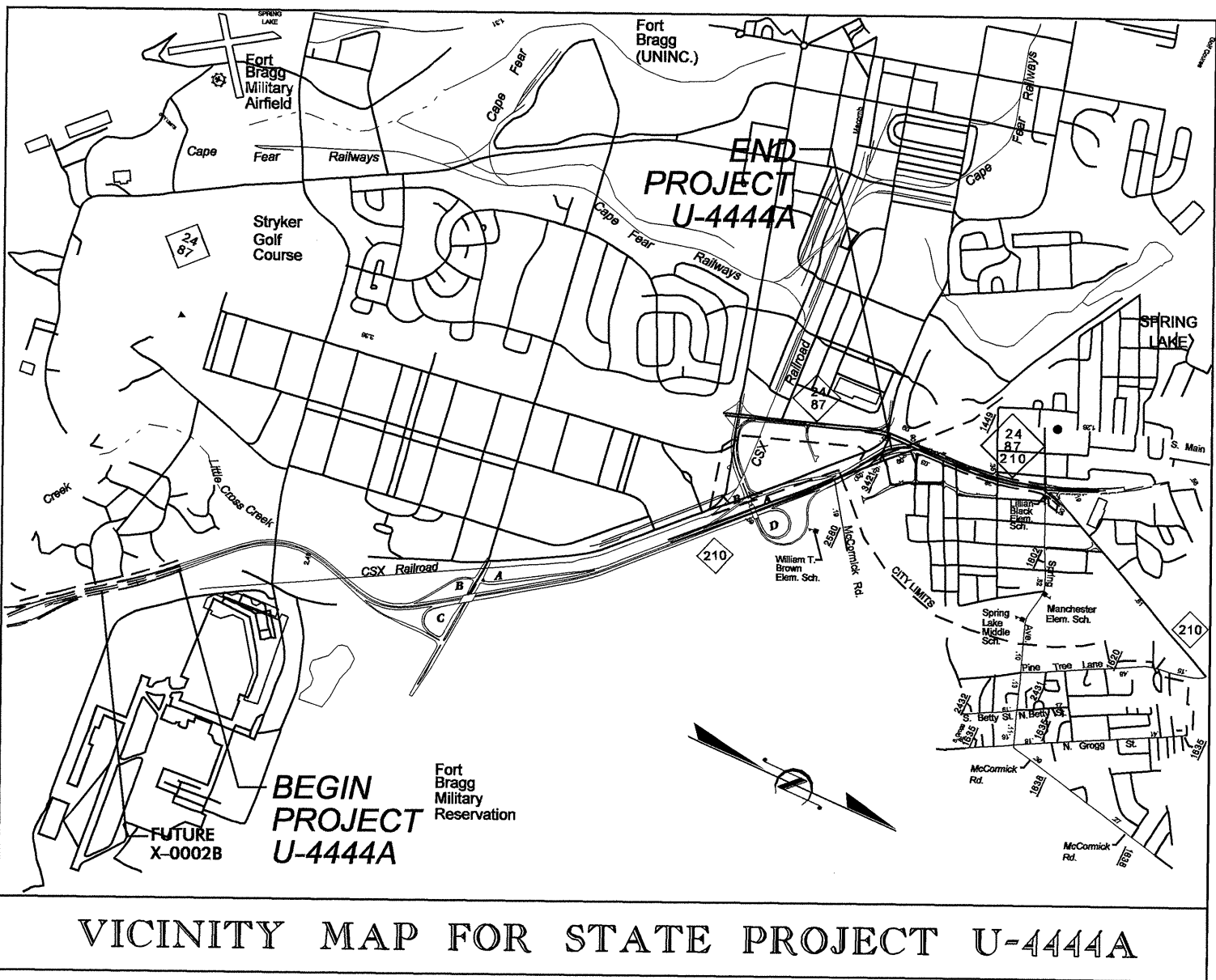
STATE OF NORTH CAROLINA
DIVISION OF HIGHWAYS

**UTILITIES BY OTHERS PLANS
CUMBERLAND COUNTY**

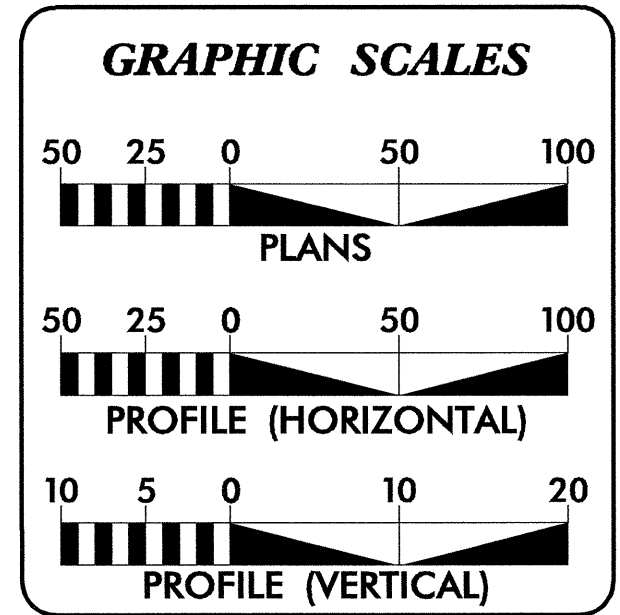
**LOCATION: NC 210 (MURCHISON ROAD) FROM FAYETTEVILLE LOOP
TO JUST NORTH OF HONEYCUTT ROAD**

TYPE OF WORK: RELOCATION OF UTILITIES BY OTHERS

TIP PROJECT: U-4444AA



THIS IS A CONTROL ACCESS PROJECT WITH ACCESS BEING LIMITED TO THE INTERCHANGES



INDEX OF SHEETS

SHEET NO.	DESCRIPTION
UO-1	TITLE SHEET
UO-2 THRU UO-7	UTILITY BY OTHERS PLAN SHEETS

- UTILITY OWNERS ON PROJECT**
- PROGRESS ENERGY - POWER TRANSMISSION
 - SANDHILLS UTILITY SERVICES, INC. - POWER DISTRIBUTION
 - PWC CITY OF FAYETTEVILLE - WATER TRANSMISSION TO FORT BRAGG
 - TIME WARNER CABLE, INC. - CABLE TV

PREPARED IN THE OFFICE OF:
**DIVISION OF HIGHWAYS
UTILITIES ENGINEERING
SECTION**

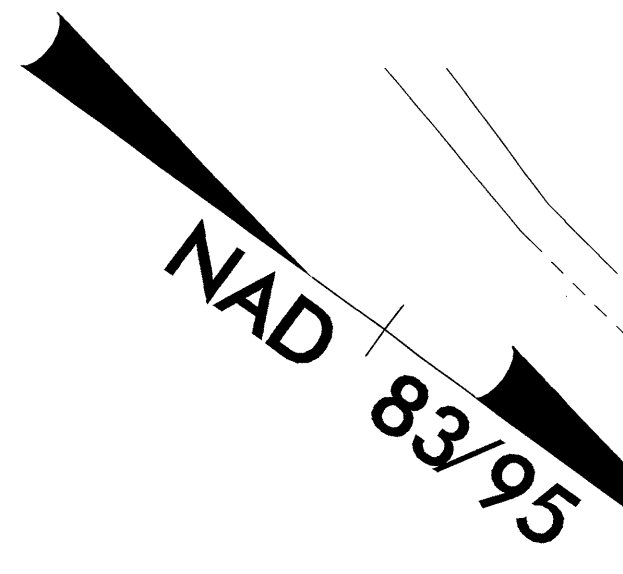
1591 MAIL SERVICES CENTER
RALEIGH NC 27699-1591
PHONE (919) 250-4128
FAX (919) 250-4119

Roger Worthington, P.E. UTILITIES SECTION ENGINEER
R. B. WILKINS, P.E. UTILITIES SQUAD LEADER PROJECT ENGINEER
JOHN A. NIGRO, P.E. UTILITIES PROJECT DESIGNER

07-JUL-2009 10:54
r:\utilities\ydy\ut\proj\4444aa\ut_title_uo1_psh.dgn
\$\$\$\$\$USERNAME\$\$\$\$\$

UTILITIES BY OTHERS

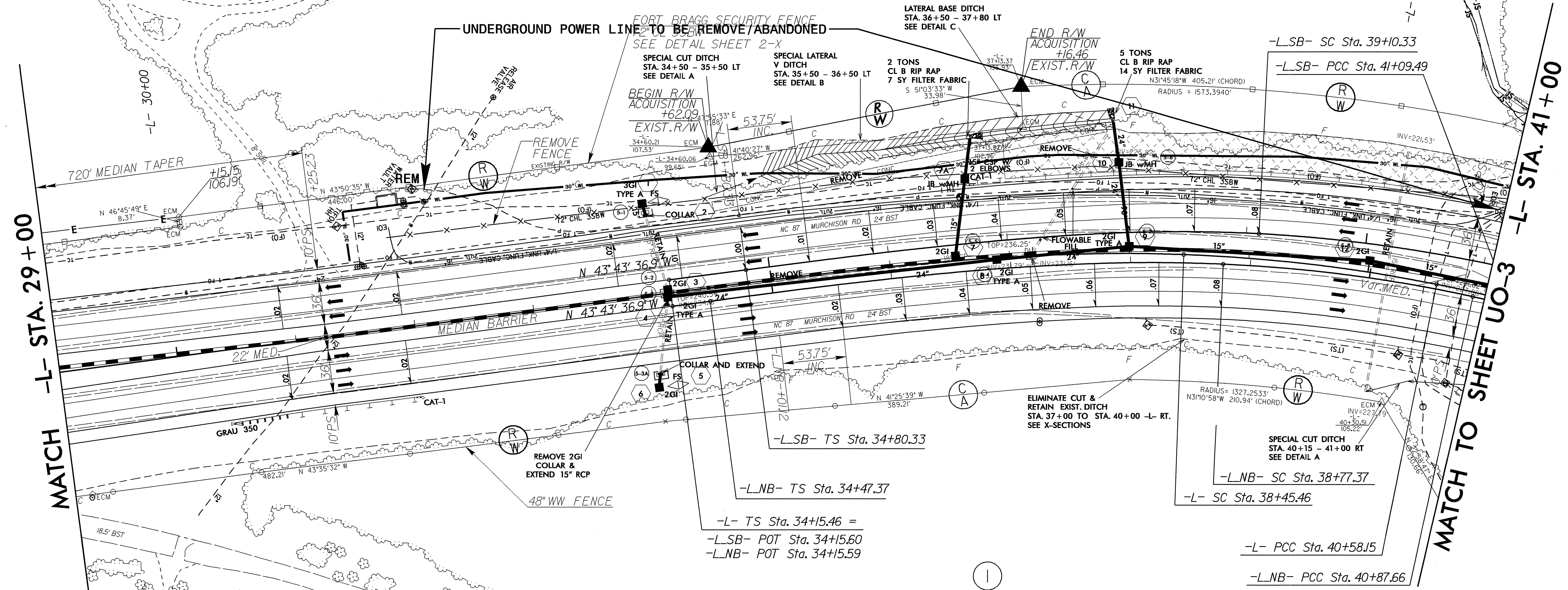
NOTE:
ALL PROPOSED UTILITY WORK SHOWN ON THIS SHEET WILL BE DONE BY OTHERS



DDE = 107 CY

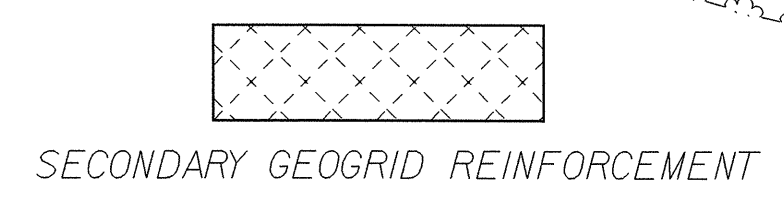
FORT BRAGG MILITARY RESERVATION

Pls Sta 37+02.54 θs = 9° 28' 33.0" Ls = 430.00' LT = 287.08' ST = 143.71'	PI Sta 39+52.05 Δ = 9° 22' 26.2" (RT) D = 4° 24' 26.5" L = 212.69' T = 106.58' R = 1,300.00' e = 8%	PI Sta 44+73.31 Δ = 31° 44' 48.2" (RT) D = 3° 55' 27.7" L = 808.96' T = 415.16' R = 1,460.00' e = 8%	Pls Sta 50+27.53 θs = 9° 25' 06.5" Ls = 480.00' LT = 320.45' ST = 160.41'
---	---	--	---



MATCH -L- STA. 29+00

MATCH TO SHEET UO-3 -L- STA. 41+00



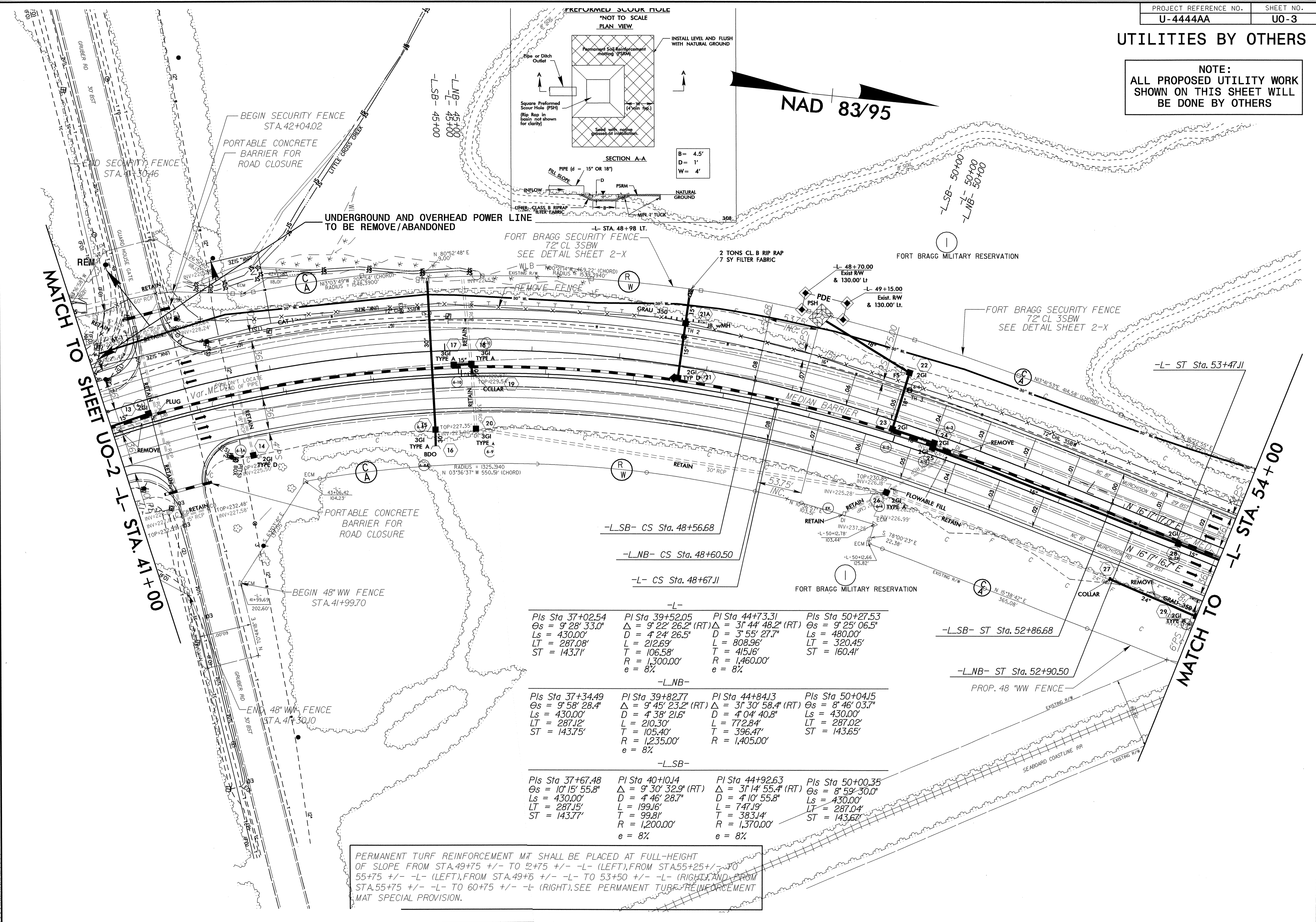
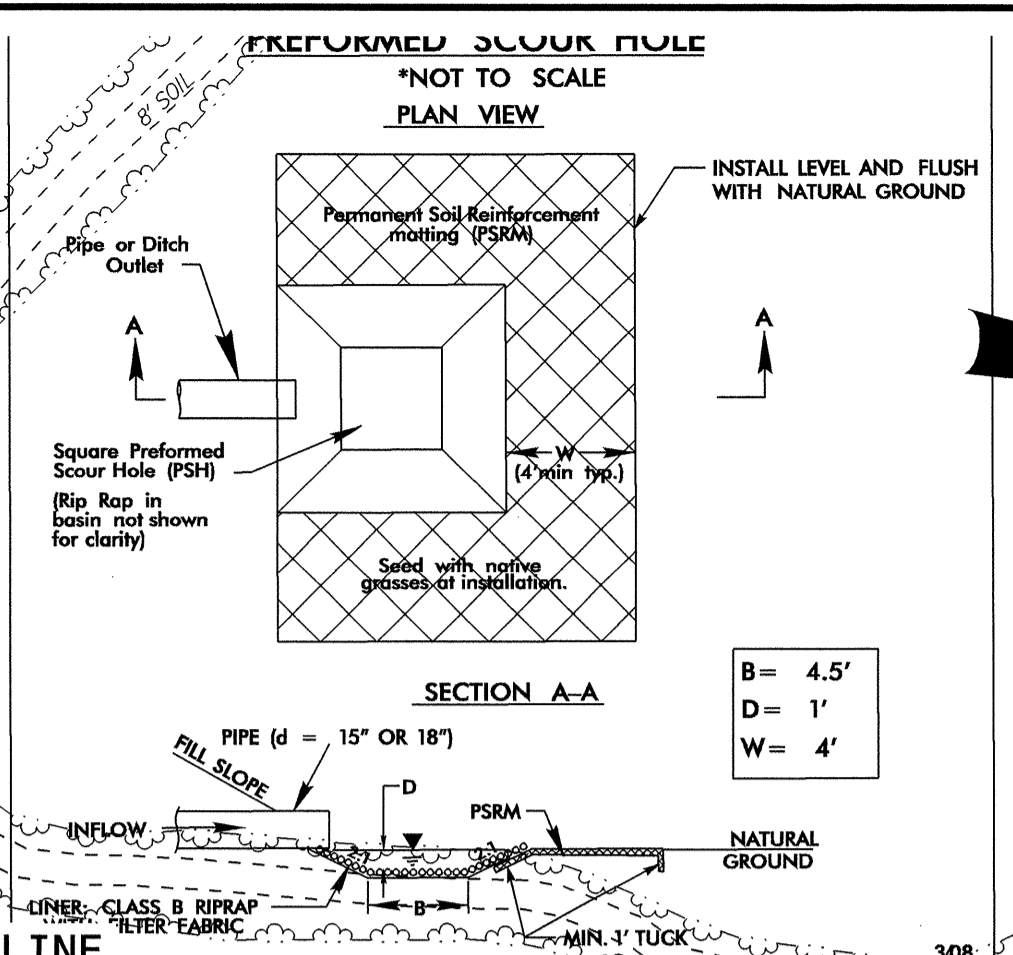
FORT BRAGG MILITARY RESERVATION

5/14/99
07-JUL-2009 10:55
R:\Utilities\Drawings\UO-2\UO-2.dwg

UTILITIES BY OTHERS

NOTE:
ALL PROPOSED UTILITY WORK
SHOWN ON THIS SHEET WILL
BE DONE BY OTHERS

NAD 83/95



Pls Sta 37+02.54 Os = 9' 28' 33.0" Ls = 430.00' LT = 287.08' ST = 143.71'	Pls Sta 39+52.05 Os = 9' 22' 26.2" (RT) Ls = 4' 24' 26.5" LT = 212.69' T = 106.58' R = 1,300.00' e = 8%	Pls Sta 44+73.31 Os = 3' 44' 48.2" (RT) Ls = 3' 55' 27.7" LT = 808.96' T = 415.16' R = 1,460.00' e = 8%	Pls Sta 50+27.53 Os = 9' 25' 06.5" Ls = 480.00' LT = 320.45' ST = 160.41'
---	---	---	---

Pls Sta 37+34.49 Os = 9' 58' 28.4" Ls = 430.00' LT = 287.12' ST = 143.75'	Pls Sta 39+82.77 Os = 9' 45' 23.2" (RT) Ls = 4' 38' 21.6" LT = 210.30' T = 105.40' R = 1,235.00' e = 8%	Pls Sta 44+84.13 Os = 3' 30' 58.4" (RT) Ls = 4' 04' 40.8" LT = 772.84' T = 396.47' R = 1,405.00' e = 8%	Pls Sta 50+04.15 Os = 8' 46' 03.7" Ls = 430.00' LT = 287.02' ST = 143.65'
---	---	---	---

Pls Sta 37+67.48 Os = 10' 15' 55.8" Ls = 430.00' LT = 287.15' ST = 143.77'	Pls Sta 40+10.14 Os = 9' 30' 32.9" (RT) Ls = 4' 46' 28.7" LT = 199.16' T = 99.81' R = 1,200.00' e = 8%	Pls Sta 44+92.63 Os = 3' 14' 55.4" (RT) Ls = 4' 10' 55.8" LT = 747.19' T = 383.14' R = 1,370.00' e = 8%	Pls Sta 50+00.35 Os = 8' 59' 30.0" Ls = 430.00' LT = 287.04' ST = 143.67'
--	--	---	---

PERMANENT TURF REINFORCEMENT MAT SHALL BE PLACED AT FULL-HEIGHT OF SLOPE FROM STA.49+75 +/- TO 52+75 +/- -L- (LEFT), FROM STA.55+25 +/- TO 55+75 +/- -L- (LEFT), FROM STA.49+75 +/- -L- TO 53+50 +/- -L- (RIGHT), AND FROM STA.55+75 +/- -L- TO 60+75 +/- -L- (RIGHT). SEE PERMANENT TURF REINFORCEMENT MAT SPECIAL PROVISION.

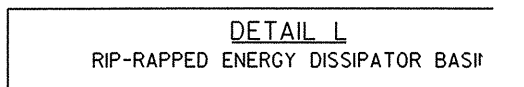
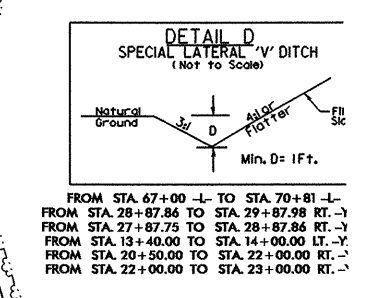
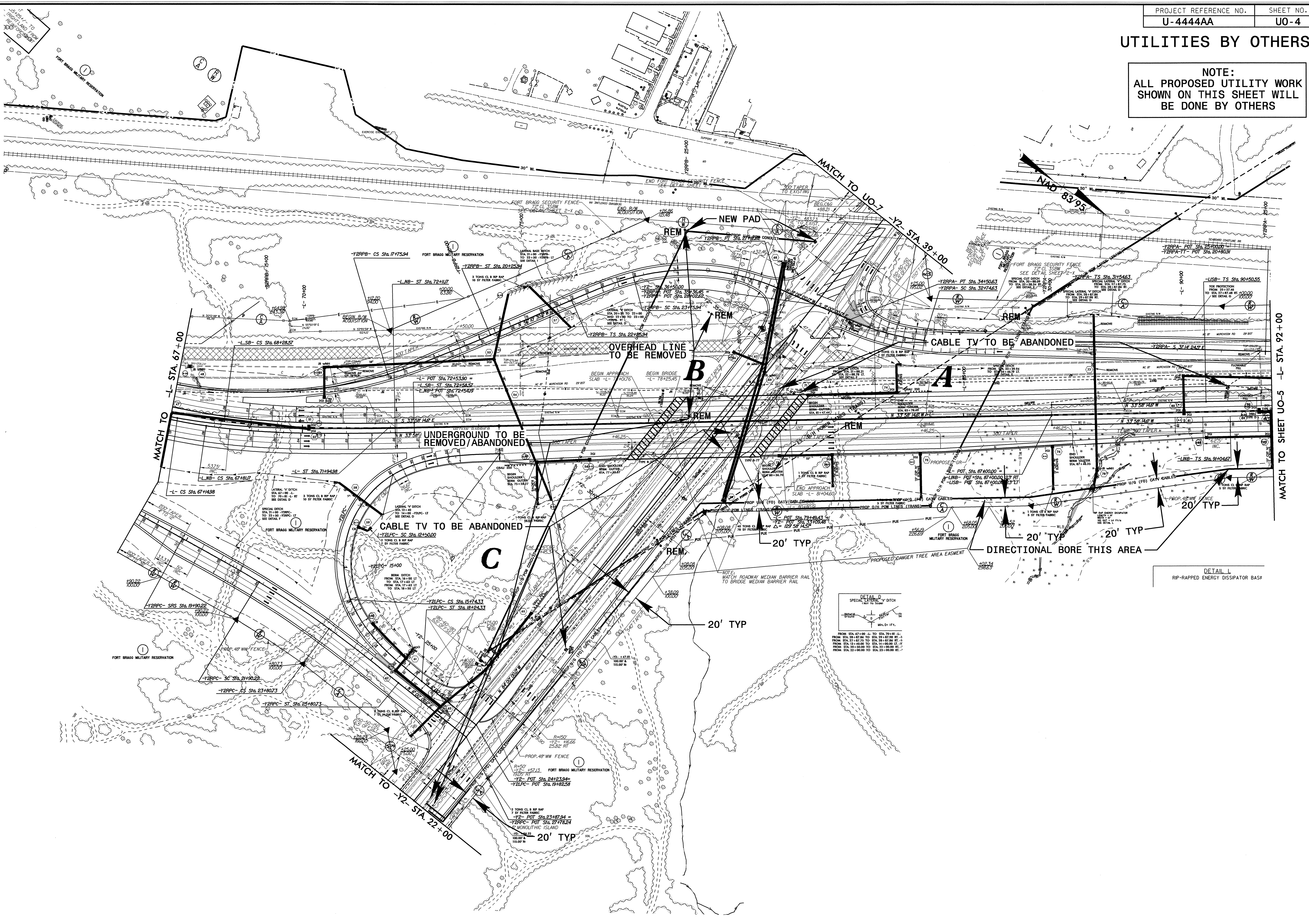
5/14/99
07-JUL-2009 10:56
Utilities.dwg
U4444AA.ut_6-uo3_psh.dgn

UTILITIES BY OTHERS

NOTE:
ALL PROPOSED UTILITY WORK
SHOWN ON THIS SHEET WILL
BE DONE BY OTHERS

5/14/99

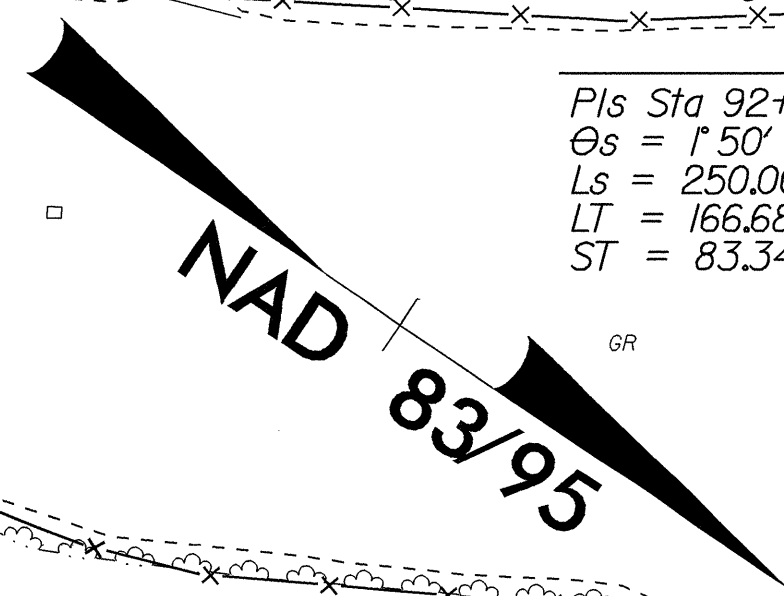
07-JUL-2009 10:59
r:\u0001\31333\FIN\UO-4\4444aa_ut_6.uo4_psh.dgn



MATCH TO SHEET UO-5 -L- STA. 92+00

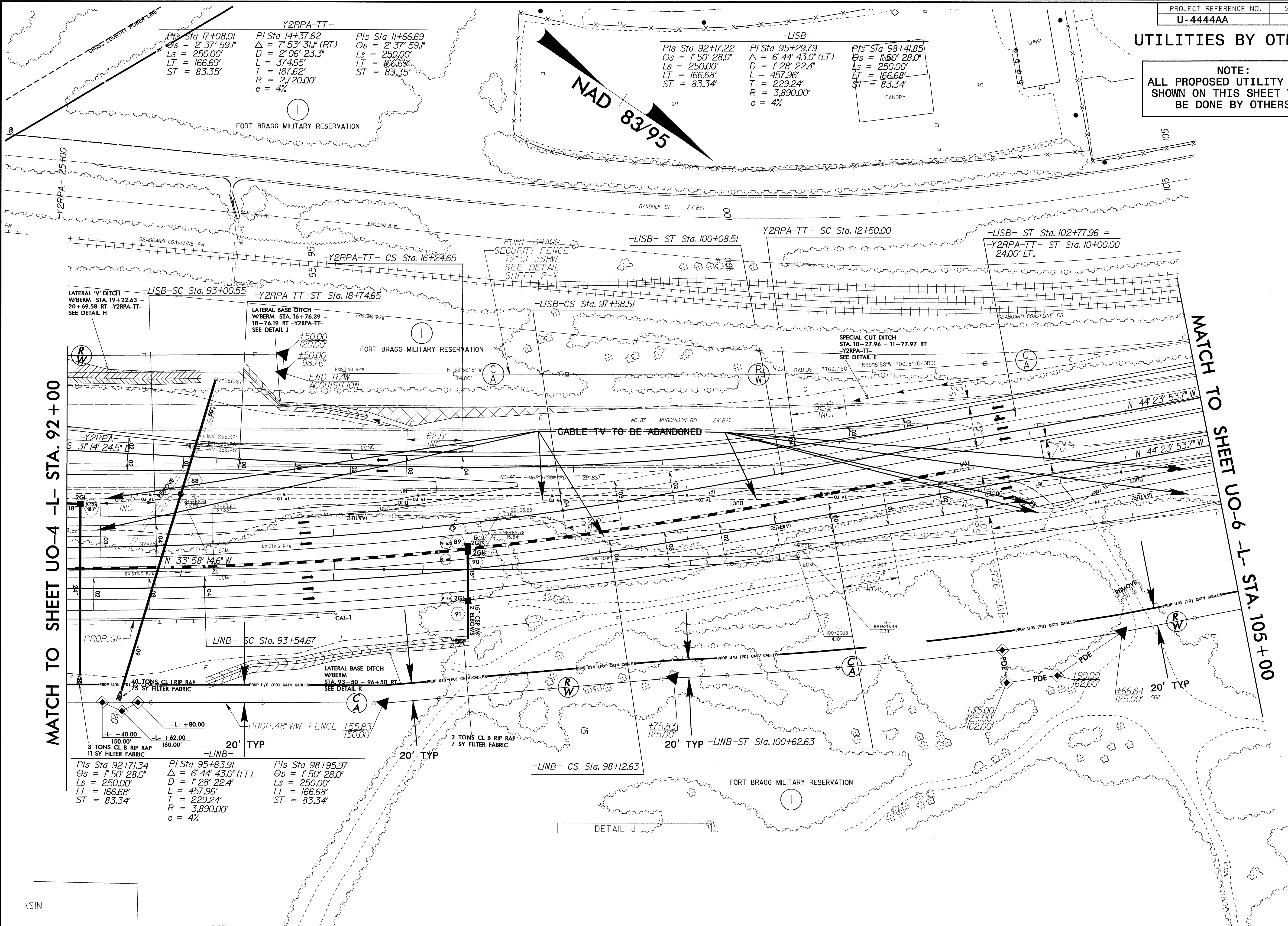
UTILITIES BY OTHERS

NOTE:
ALL PROPOSED UTILITY WORK
SHOWN ON THIS SHEET WILL
BE DONE BY OTHERS



-Y2RPA-TT-
 Pls Sta 17+08.01
 $\Delta = 2' 37' 59.1''$
 $L_s = 250.00'$
 $LT = 166.69'$
 $ST = 83.35'$
 Pls Sta 14+37.62
 $\Delta = 7' 53' 31.1'' (RT)$
 $D = 2' 06' 23.3''$
 $L = 37.465'$
 $T = 187.62'$
 $R = 2720.00'$
 $e = 4\%$
 Pls Sta 11+66.69
 $\Delta = 2' 37' 59.1''$
 $L_s = 250.00'$
 $LT = 166.69'$
 $ST = 83.35'$

-LISB-
 Pls Sta 92+17.22
 $\Delta = 1' 50' 28.0''$
 $L_s = 250.00'$
 $LT = 166.68'$
 $ST = 83.34'$
 Pls Sta 95+29.79
 $\Delta = 6' 44' 43.0'' (LT)$
 $D = 1' 28' 22.4''$
 $L = 457.96'$
 $T = 229.24'$
 $R = 3,890.00'$
 $e = 4\%$
 Pls Sta 98+41.85
 $\Delta = 1' 50' 28.0''$
 $L_s = 250.00'$
 $LT = 166.68'$
 $ST = 83.34'$



MATCH TO SHEET UO-4 -L- STA. 92+00

MATCH TO SHEET UO-6 -L- STA. 105+00

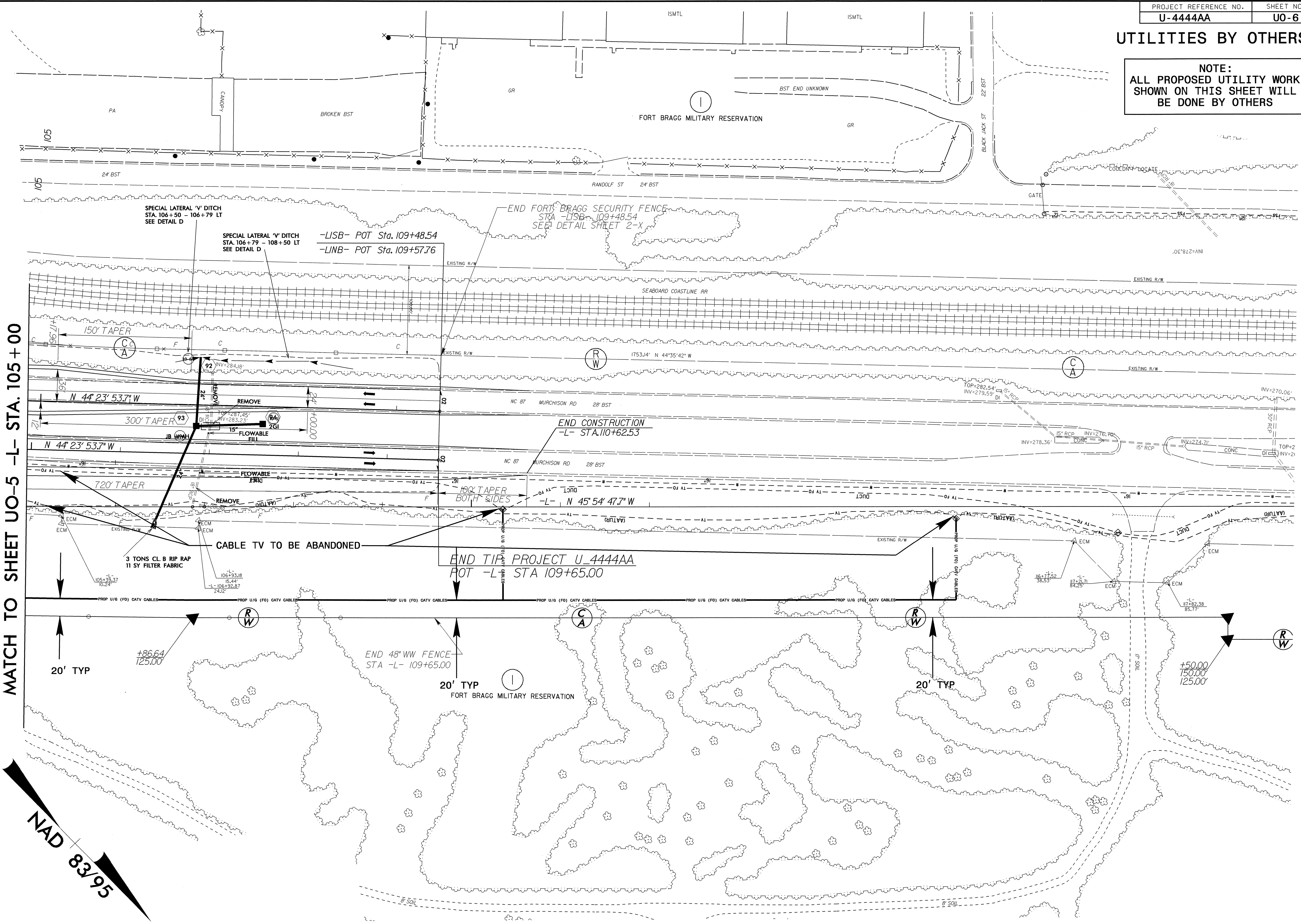
-LINB-
 Pls Sta 92+71.34
 $\Delta = 1' 50' 28.0''$
 $L_s = 250.00'$
 $LT = 166.68'$
 $ST = 83.34'$
 Pls Sta 95+83.91
 $\Delta = 6' 44' 43.0'' (LT)$
 $D = 1' 28' 22.4''$
 $L = 457.96'$
 $T = 229.24'$
 $R = 3,890.00'$
 $e = 4\%$
 Pls Sta 98+95.97
 $\Delta = 1' 50' 28.0''$
 $L_s = 250.00'$
 $LT = 166.68'$
 $ST = 83.34'$

ASIN

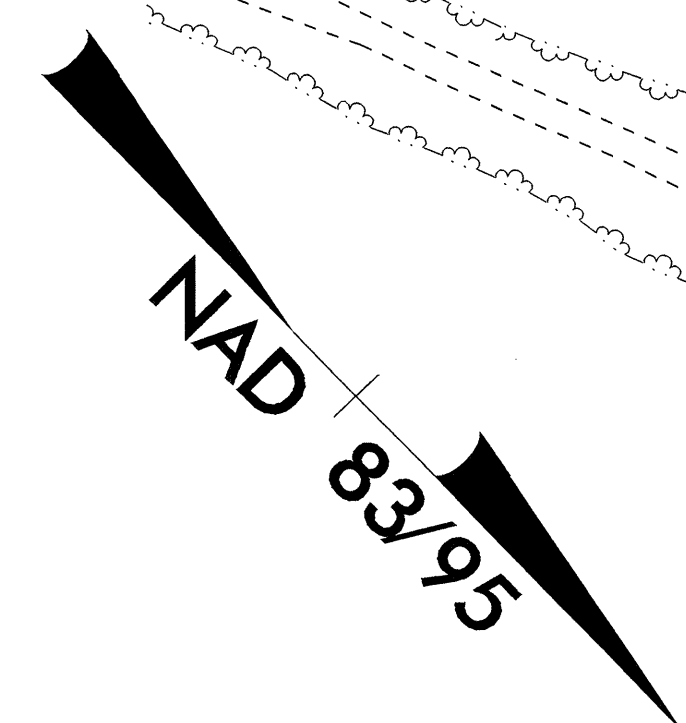
07-JUL-2009 10:00
 r:\projects\11000\11000_01\11000_01_uo5_psh.dgn
 5/14/09

UTILITIES BY OTHERS

NOTE:
ALL PROPOSED UTILITY WORK SHOWN ON THIS SHEET WILL BE DONE BY OTHERS



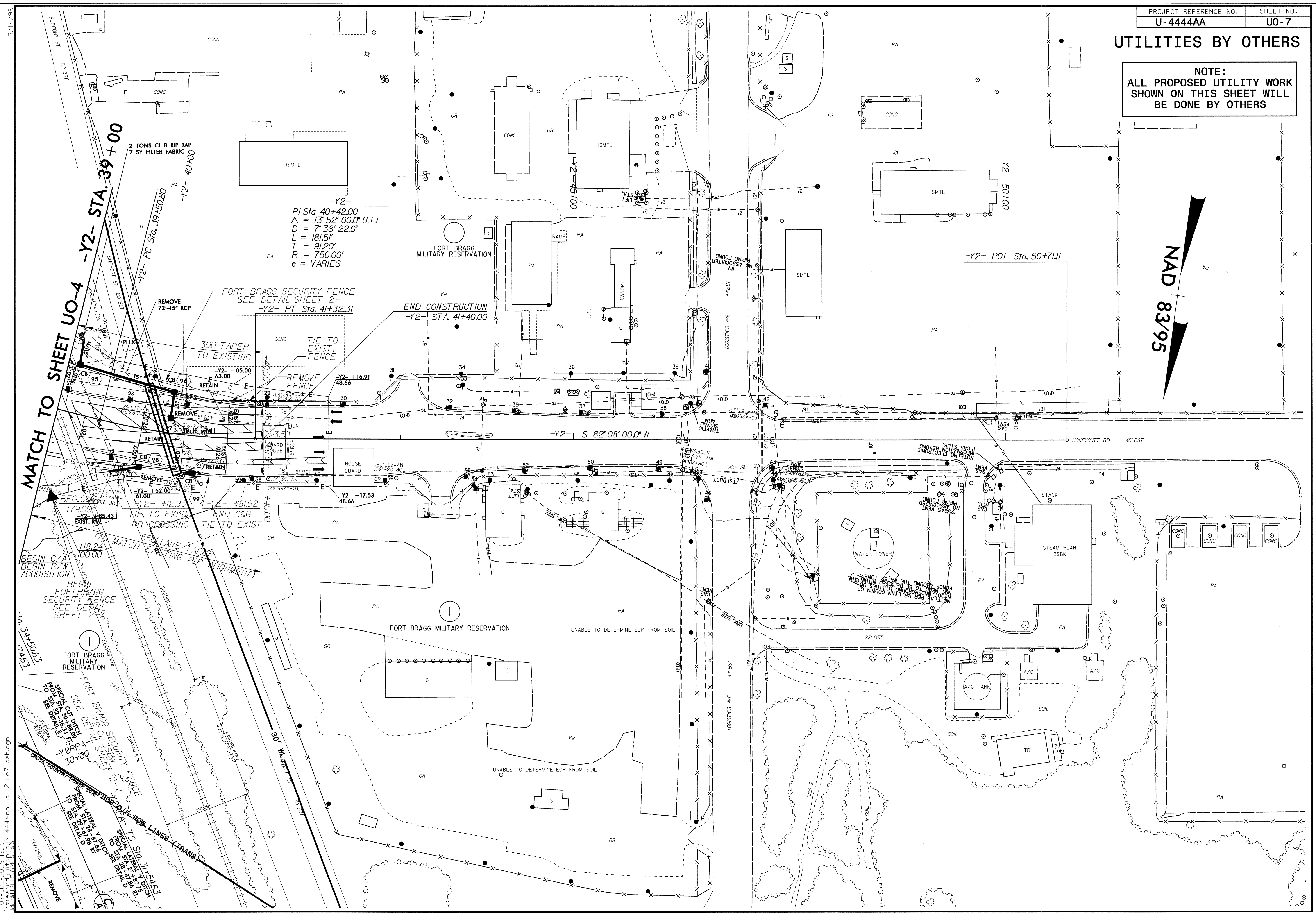
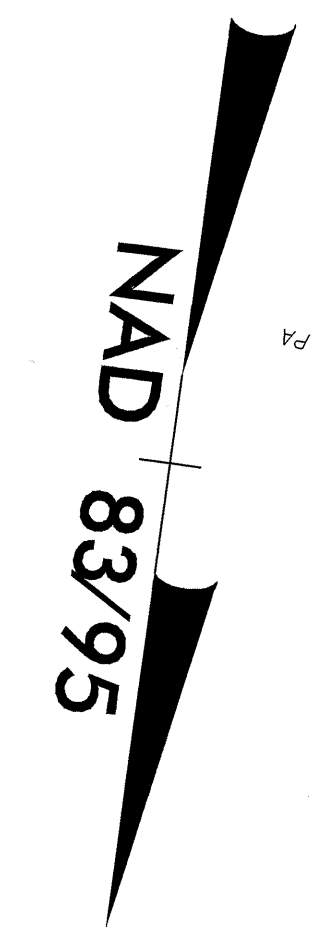
MATCH TO SHEET UO-5 -L- STA. 105+00



5/14/99
07-JUL-2009 11:02
\\utilities\cadd\ut_10_uo6_psh.dgn
U-4444AA-UT-10-UO6-PSH

UTILITIES BY OTHERS

NOTE:
ALL PROPOSED UTILITY WORK
SHOWN ON THIS SHEET WILL
BE DONE BY OTHERS



PI Sta 40+42.00
 $\Delta = 13^{\circ} 52' 00.0''$ (LT)
 $D = 7^{\circ} 38' 22.0''$
 $L = 181.51'$
 $T = 91.20'$
 $R = 750.00'$
 $e = \text{VARIES}$

2 TONS CL B RIP RAP
 7 SY FILTER FABRIC
 -Y2- 39+00
 -Y2- 40+00
 -Y2- PC Sta. 39+50.80

FORT BRAGG SECURITY FENCE
 SEE DETAIL SHEET 2-
 -Y2- PT Sta. 41+32.31
 END CONSTRUCTION
 -Y2- STA. 41+40.00

REMOVE 72'-15" RCP
 300' TAPER TO EXISTING
 REMOVE FENCE
 TIE TO EXIST. FENCE
 Y2- +16.91
 Y2- +12.93
 Y2- +17.53
 Y2- +18.92
 Y2- +19.92
 Y2- +20.92
 Y2- +21.92
 Y2- +22.92
 Y2- +23.92
 Y2- +24.92
 Y2- +25.92
 Y2- +26.92
 Y2- +27.92
 Y2- +28.92
 Y2- +29.92
 Y2- +30.92
 Y2- +31.92
 Y2- +32.92
 Y2- +33.92
 Y2- +34.92
 Y2- +35.92
 Y2- +36.92
 Y2- +37.92
 Y2- +38.92
 Y2- +39.92
 Y2- +40.92
 Y2- +41.92
 Y2- +42.92
 Y2- +43.92
 Y2- +44.92
 Y2- +45.92
 Y2- +46.92
 Y2- +47.92
 Y2- +48.92
 Y2- +49.92
 Y2- +50.92
 Y2- +51.92
 Y2- +52.92
 Y2- +53.92
 Y2- +54.92
 Y2- +55.92
 Y2- +56.92
 Y2- +57.92
 Y2- +58.92
 Y2- +59.92
 Y2- +60.92
 Y2- +61.92
 Y2- +62.92
 Y2- +63.92
 Y2- +64.92
 Y2- +65.92
 Y2- +66.92
 Y2- +67.92
 Y2- +68.92
 Y2- +69.92
 Y2- +70.92
 Y2- +71.92
 Y2- +72.92
 Y2- +73.92
 Y2- +74.92
 Y2- +75.92
 Y2- +76.92
 Y2- +77.92
 Y2- +78.92
 Y2- +79.92
 Y2- +80.92
 Y2- +81.92
 Y2- +82.92
 Y2- +83.92
 Y2- +84.92
 Y2- +85.92
 Y2- +86.92
 Y2- +87.92
 Y2- +88.92
 Y2- +89.92
 Y2- +90.92
 Y2- +91.92
 Y2- +92.92
 Y2- +93.92
 Y2- +94.92
 Y2- +95.92
 Y2- +96.92
 Y2- +97.92
 Y2- +98.92
 Y2- +99.92
 Y2- +100.92

MATCH TO SHEET UO-4
 -Y2- STA. 39+00
 -Y2- STA. 40+00
 -Y2- STA. 41+00
 -Y2- STA. 42+00
 -Y2- STA. 43+00
 -Y2- STA. 44+00
 -Y2- STA. 45+00
 -Y2- STA. 46+00
 -Y2- STA. 47+00
 -Y2- STA. 48+00
 -Y2- STA. 49+00
 -Y2- STA. 50+00
 -Y2- STA. 51+00
 -Y2- STA. 52+00
 -Y2- STA. 53+00
 -Y2- STA. 54+00
 -Y2- STA. 55+00
 -Y2- STA. 56+00
 -Y2- STA. 57+00
 -Y2- STA. 58+00
 -Y2- STA. 59+00
 -Y2- STA. 60+00
 -Y2- STA. 61+00
 -Y2- STA. 62+00
 -Y2- STA. 63+00
 -Y2- STA. 64+00
 -Y2- STA. 65+00
 -Y2- STA. 66+00
 -Y2- STA. 67+00
 -Y2- STA. 68+00
 -Y2- STA. 69+00
 -Y2- STA. 70+00
 -Y2- STA. 71+00
 -Y2- STA. 72+00
 -Y2- STA. 73+00
 -Y2- STA. 74+00
 -Y2- STA. 75+00
 -Y2- STA. 76+00
 -Y2- STA. 77+00
 -Y2- STA. 78+00
 -Y2- STA. 79+00
 -Y2- STA. 80+00
 -Y2- STA. 81+00
 -Y2- STA. 82+00
 -Y2- STA. 83+00
 -Y2- STA. 84+00
 -Y2- STA. 85+00
 -Y2- STA. 86+00
 -Y2- STA. 87+00
 -Y2- STA. 88+00
 -Y2- STA. 89+00
 -Y2- STA. 90+00
 -Y2- STA. 91+00
 -Y2- STA. 92+00
 -Y2- STA. 93+00
 -Y2- STA. 94+00
 -Y2- STA. 95+00
 -Y2- STA. 96+00
 -Y2- STA. 97+00
 -Y2- STA. 98+00
 -Y2- STA. 99+00
 -Y2- STA. 100+00

5/14/99
 07-JUL-2009 11:03
 U:\Utilities\Projects\U-4444AA\U-4444AA-UT-12-uo7-psh.dgn