

CONTRACT NO: C202311 TIP PROJECT: B-5179A

STATE OF NORTH CAROLINA
 DIVISION OF HIGHWAYS

**BUNCOMBE AND MADISON
 COUNTY**

LOCATION: I-26, US 2570, I-240, ISLAND ROAD,
 US 1923 FUTURE I-26, SR-1001, I-40
 TYPE OF WORK: BRIDGE DECK PRESERVATION.

STATE	STATE PROJECT REFERENCE NO.	SHEET NO.	TOTAL SHEETS
N.C.	B-5179A	1A	
STATE PROJECT NO.	F.A. PROJ. NO.	DESCRIPTION	
45066.1.ST1	STM-000S (593)	PE	
45066.3.ST1	STM-000S (593)	CONSTR	

INDEX OF SHEETS

1	TITLE SHEET
1A	INDEX OF SHEET
2	SUMMARY OF QUANTITIES
S1 THRU S18	STRUCTURE PLANS
TCP-1 THRU TCP-12	TRAFFIC CONTROL PLANS



Prepared In the Office of:
BRIDGE MANAGEMENT UNIT
 NORTH CAROLINA DEPARTMENT OF TRANSPORTATION

2006 STANDARD SPECIFICATIONS

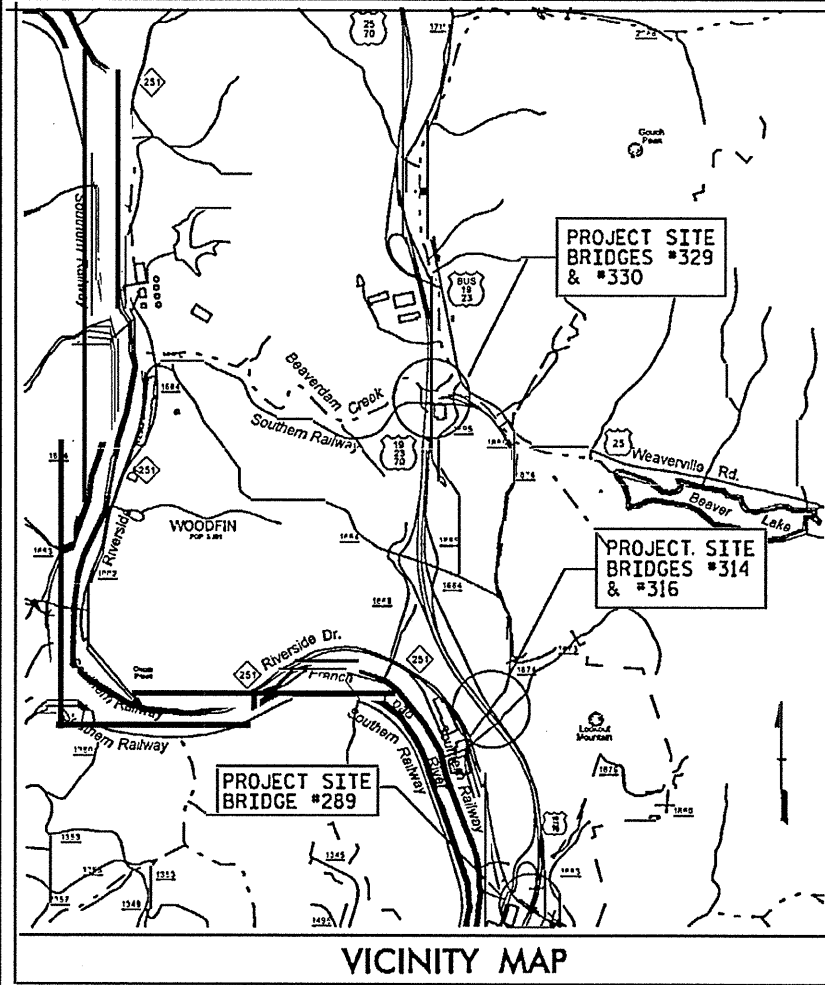
LETTING DATE: SEPT. 15, 2009;	DAN HOLDERMAN, PE STATE BRIDGE MANAGEMENT ENGINEER
---	--

MIKE SUMMERS
BRIDGE MANAGEMENT
PROJECT MANAGER

RICK NELSON, PE
DESIGN ENGINEER

CONTRACT NO.: C202311 TIP NO: B-5179A

STRUCTURES



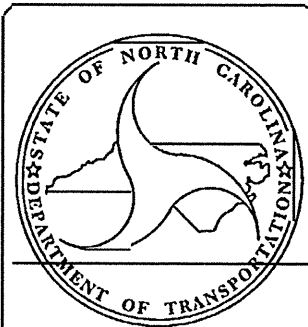
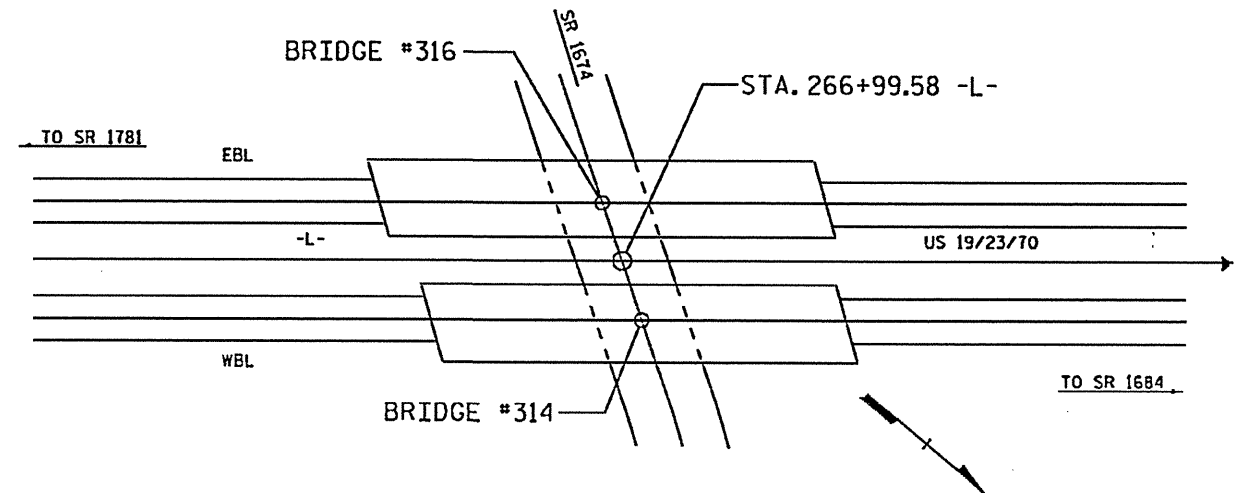
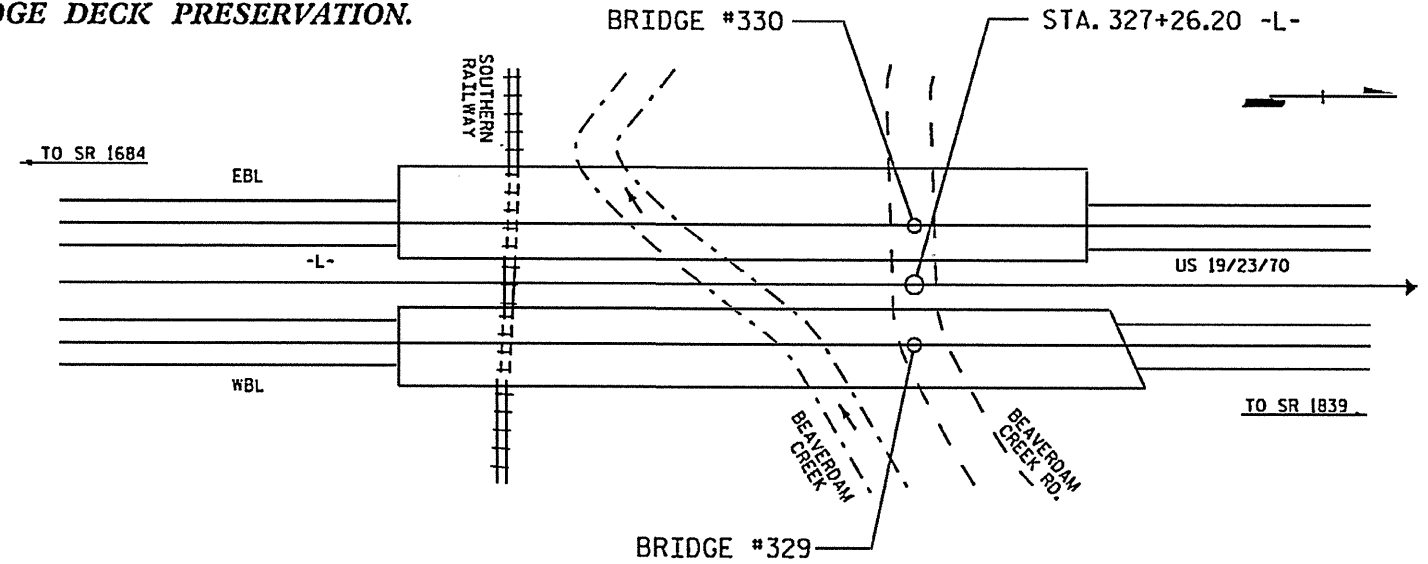
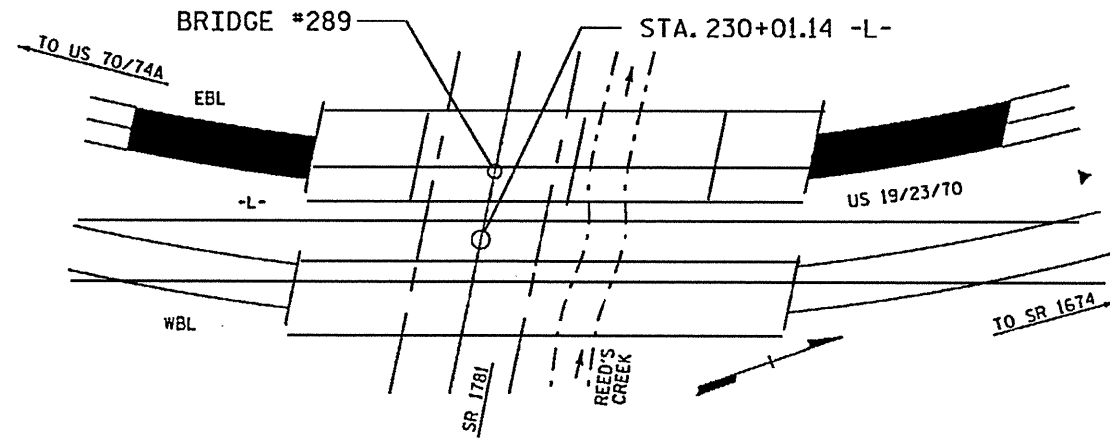
STATE OF NORTH CAROLINA
DIVISION OF HIGHWAYS

BUNCOMBE COUNTY

LOCATION: BRIDGE #289 OVER SR 1781 (BROADWAY ST.) & REED'S CREEK ON I-26/US 19/23/70, BRIDGE #314 & BRIDGE #316 OVER SR 1674 (OLD BURNSVILLE RD.) ON I-26/US 19/23/70 AND BRIDGE #329 & BRIDGE #330 OVER SOUTHERN R.R. & BEAVERDAM CREEK ON I-26/US 19/23/70.

TYPE OF WORK: BRIDGE DECK PRESERVATION.

STATE	STATE PROJECT REFERENCE NO.	PROJECT NO.	TOTAL SHEETS
N.C.	B-5179A		
STATE PROJ. NO.	F.A. PROJ. NO.	DESCRIPTION	
45066.3.STI	STM-000S(593)	PE	
45066.3.STI	STM-000S(593)	CONST.	



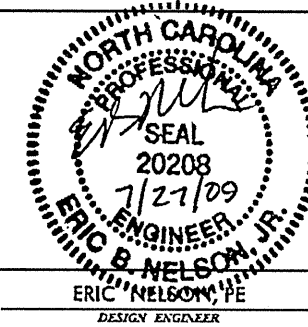
PROJECT LENGTH

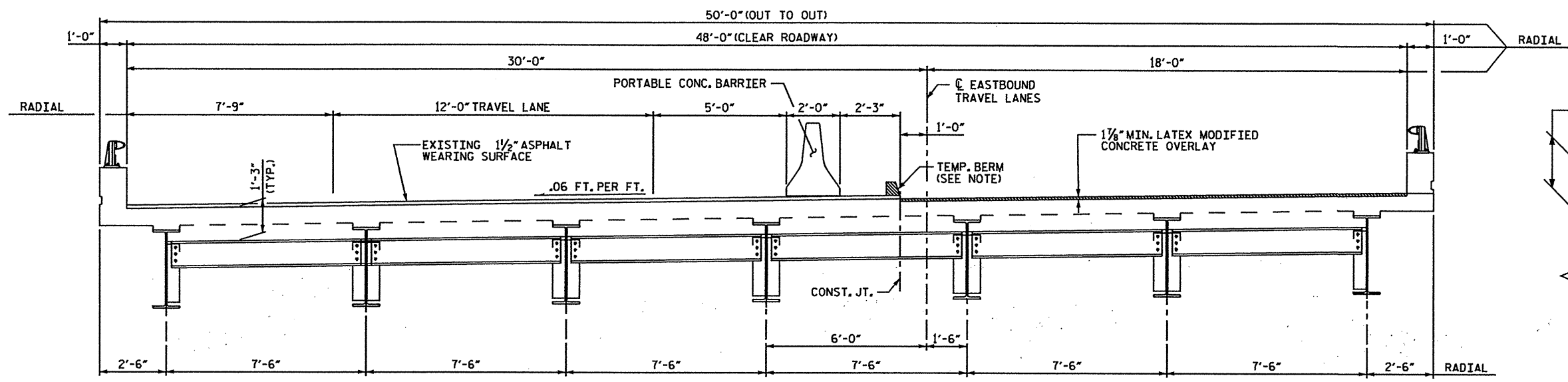
LENGTH ROADWAY PROJECT = 0.038 MILE
 LENGTH STRUCTURE PROJECT = 0.172 MILE
 TOTAL LENGTH PROJECT = 0.210 MILE

Prepared in the Office of:
DIVISION OF BRIDGE MANAGEMENT
 NORTH CAROLINA DEPARTMENT OF TRANSPORTATION
 2006 STANDARD SPECIFICATIONS

LETTING DATE:
 SEPT. 15, 2009

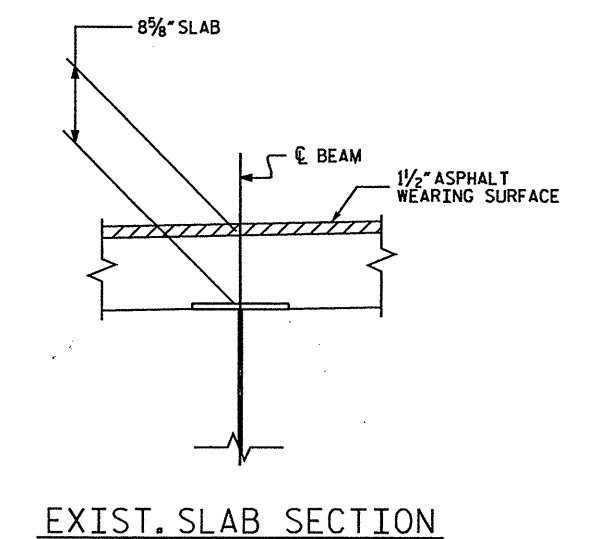
DAN HOLDERMAN, PE
 PROJECT ENGINEER



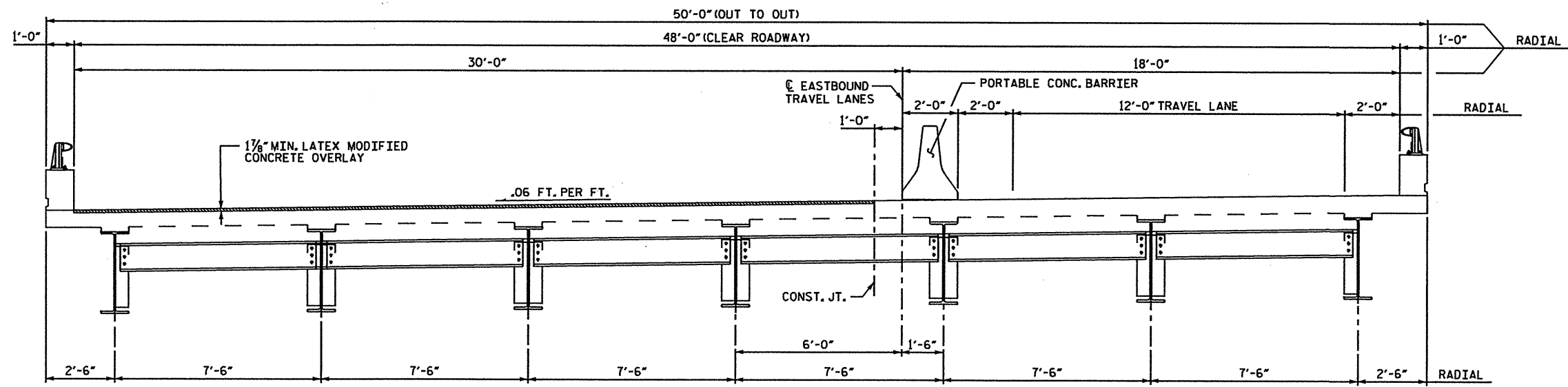


TYP. SECTION - STAGE I
(SHOWING DIAPHRAGMS AT EXPANSION JOINTS)

NOTE:
WATER & CONCRETE SLURRY FROM HYDRO-DEMOLITION
SHALL NOT BE ALLOWED TO DRAIN ACROSS TRAVEL LANES.
CONTRACTOR SHALL PROVIDE A METHOD TO CONTROL THE
WATER.



EXIST. SLAB SECTION



TYP. SECTION - STAGE II
(SHOWING DIAPHRAGMS AT EXPANSION JOINTS)

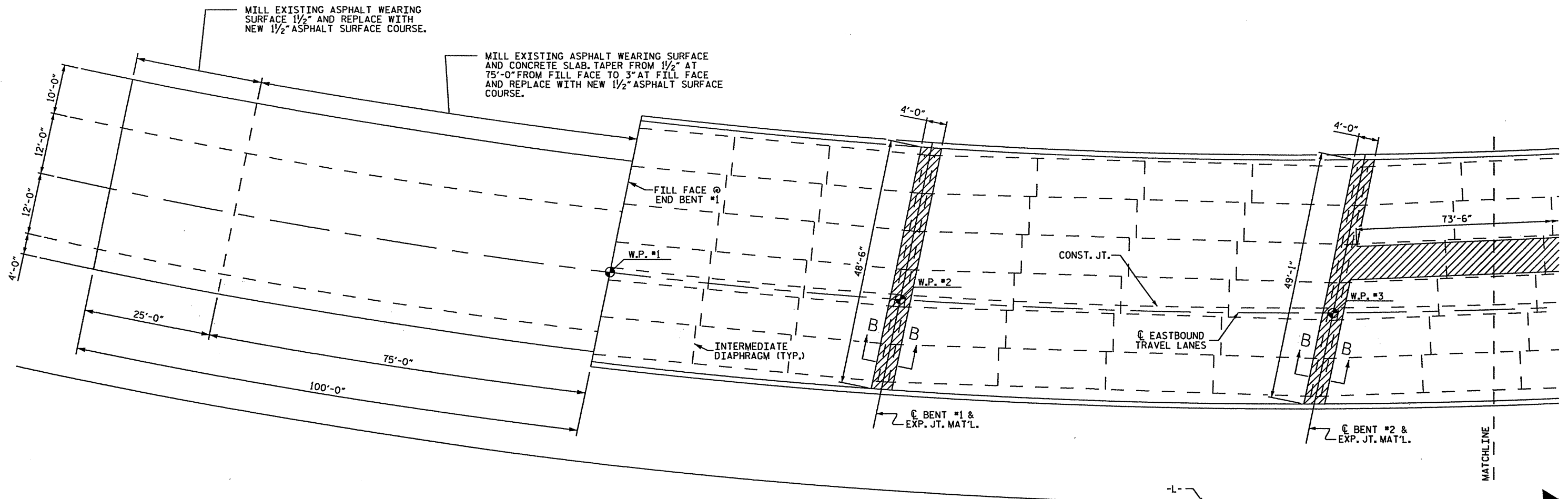
PROJECT NO. B-5179A
BUNCOMBE COUNTY
STATION: 230+01.14 -L-

STATE OF NORTH CAROLINA
DEPARTMENT OF TRANSPORTATION
RALEIGH
TYPICAL SECTION

DECK REHAB. FOR BRIDGE NO. 289

REVISIONS						SHEET NO.
NO.	BY	DATE	NO.	BY	DATE	S-1
1			3			TOTAL SHEETS 18
2			4			

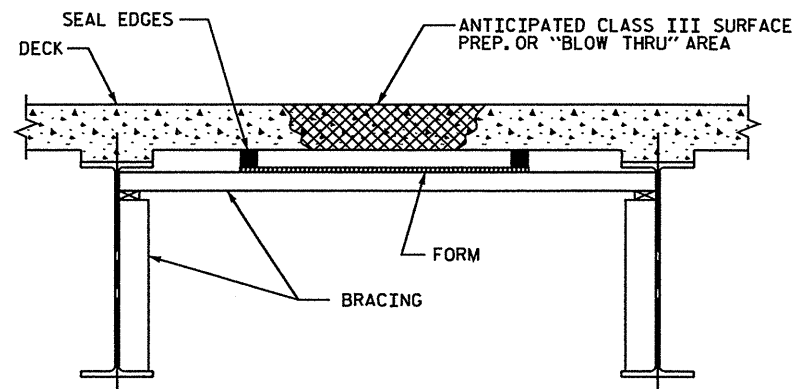
DRAWN BY : M.A. ALLEN DATE : 04-09
CHECKED BY : B.C. HANKS DATE : 04-09



PLAN OF SPANS - DECK REPAIRS



C1	PROP. APPROX. 1 1/2" MIN. ASPHALT CONCRETE SURFACE COURSE, TYPE SF9.5A, AT AN AVERAGE RATE OF 165 LBS. PER SQ. YD.
----	--

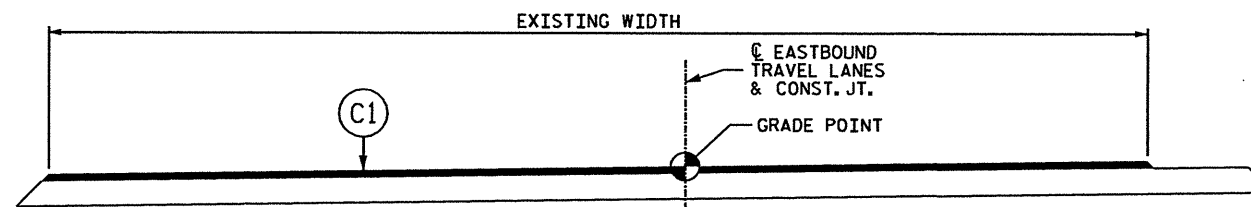


TYP. "BLOW THRU" CONTAINMENT AND FORMWORK

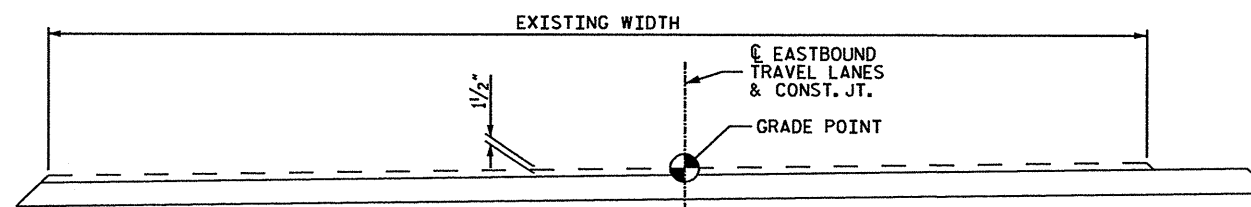
A METHOD TO CAPTURE WATER AND DEBRIS FROM BLOW THRU DURING HYDRO-DEMOLITION SHALL BE INSTALLED IN AREAS INDICATED AS CLASS III SURFACE PREPARATION.

SUBMIT DETAILS OF PROPOSED FORMWORK FOR APPROVAL PRIOR TO BEGINNING WORK.

COSTS FOR INSTALLING AND REMOVING FORMWORK SHALL BE INCIDENTAL TO THE PRICE PER SQ. YARD OF HYDRO-DEMOLITION.



TYPICAL ROADWAY SECTION



TYPICAL ROADWAY MILLING SECTION

(MILL DEPTH VARIES SEE PLAN)

PROJECT NO. B-5179A
 BUNCOMBE COUNTY
 STATION: 230+01.14 -L-

SHEET 2 OF 3

STATE OF NORTH CAROLINA
 DEPARTMENT OF TRANSPORTATION
 RALEIGH

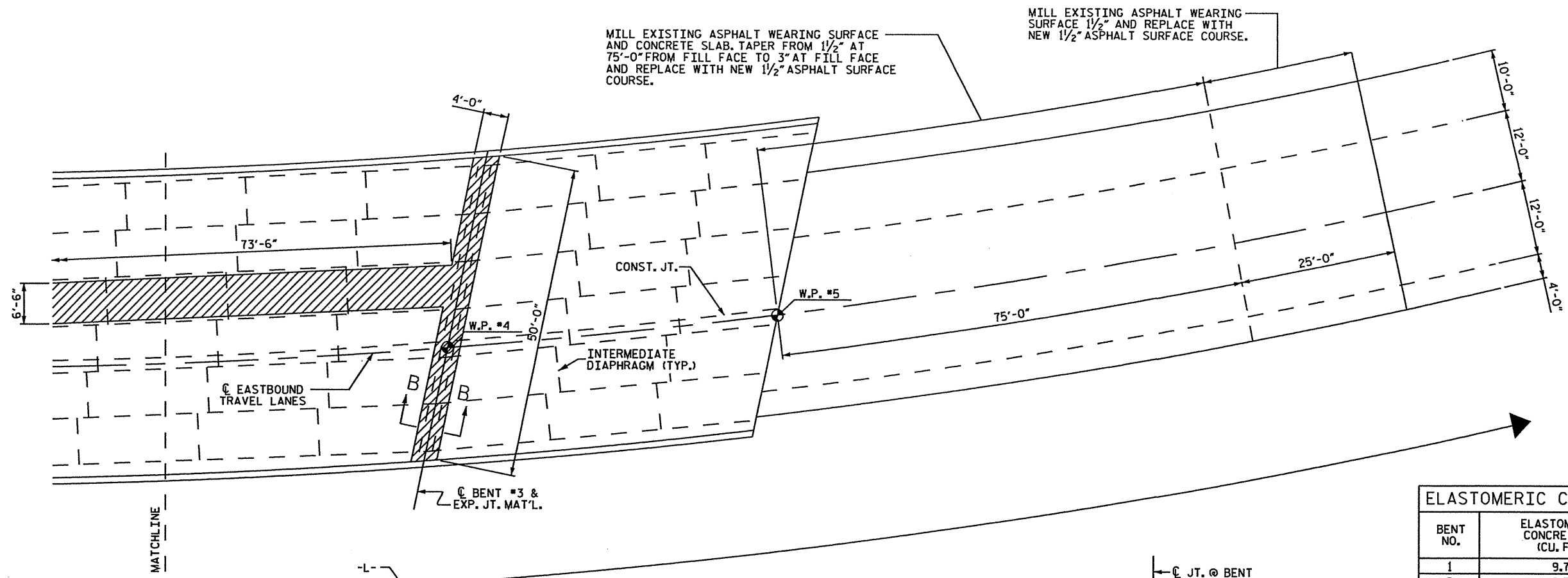
PLAN OF SPANS
 FOR DECK REPAIR

DECK REHAB. FOR BRIDGE NO. 289

REVISIONS				SHEET NO.	
NO.	BY	DATE	NO.	BY	DATE
1			3		
2			4		

TOTAL SHEETS 18

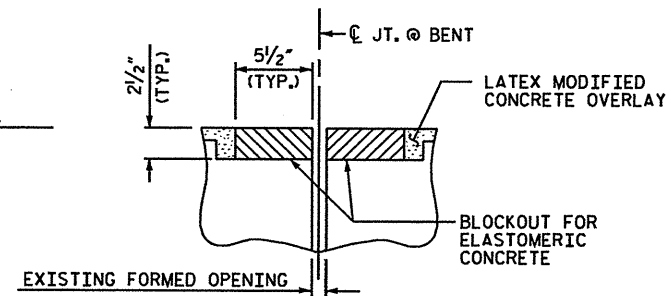
DRAWN BY: M.A. ALLEN DATE: 4-09
 CHECKED BY: B.C. HANKS DATE: 4-09



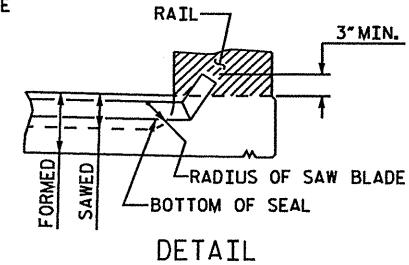
MILL EXISTING ASPHALT WEARING SURFACE AND CONCRETE SLAB. TAPER FROM 1/2" AT 75'-0" FROM FILL FACE TO 3" AT FILL FACE AND REPLACE WITH NEW 1/2" ASPHALT SURFACE COURSE.

MILL EXISTING ASPHALT WEARING SURFACE 1/2" AND REPLACE WITH NEW 1/2" ASPHALT SURFACE COURSE.

PLAN OF SPANS - DECK REPAIRS

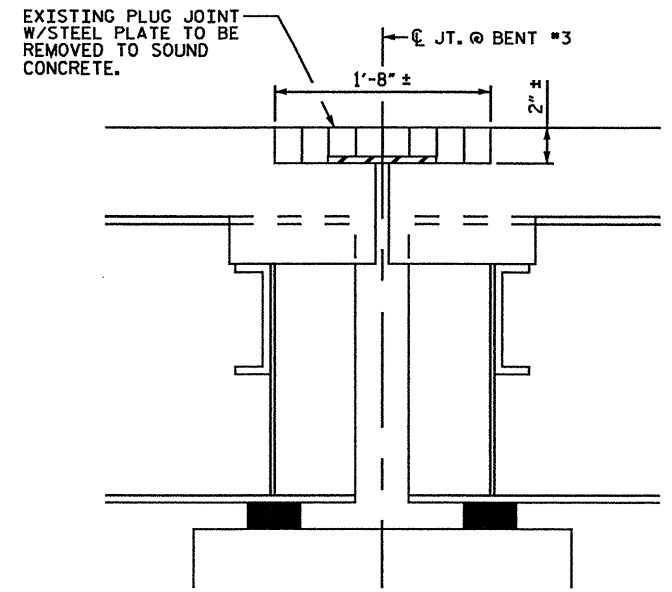


SECTION B-B
EVAZOTE JOINT SEAL
(PRE-SAWED ELASTOMERIC CONCRETE DIMENSIONS)

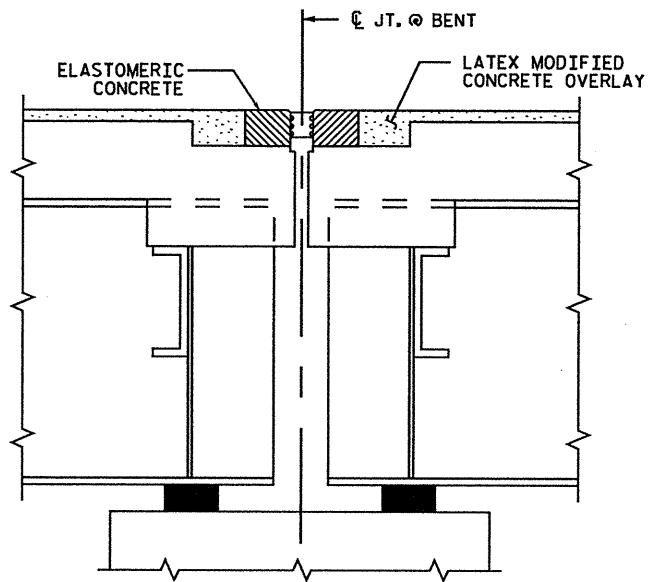


ELASTOMERIC CONCRETE	
BENT NO.	ELASTOMERIC CONCRETE * (CU. FT.)
1	9.7
2	9.7
3	9.7
TOTAL	29.1

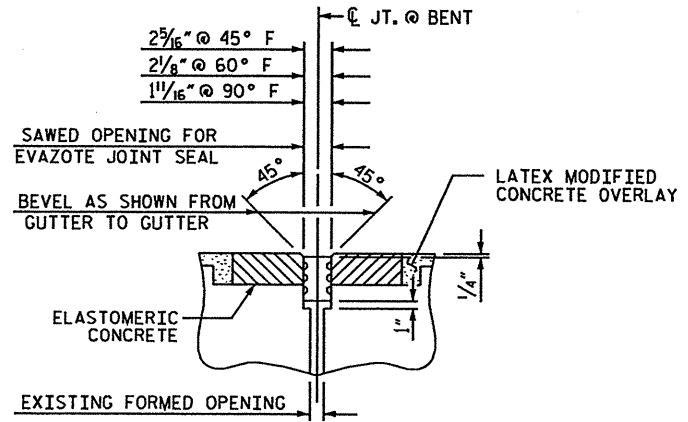
* BASED ON THE MINIMUM BLOCKOUT SHOWN.



SECTION B-B
(EXISTING JOINT)



SECTION B-B
(PROPOSED JOINT REPLACEMENT DETAIL)



SECTION B-B
EVAZOTE JOINT SEAL
(EXPANSION)

PROJECT NO. B-5179A
BUNCOMBE COUNTY
 STATION: 230+01.14 -L-

SHEET 3 OF 3

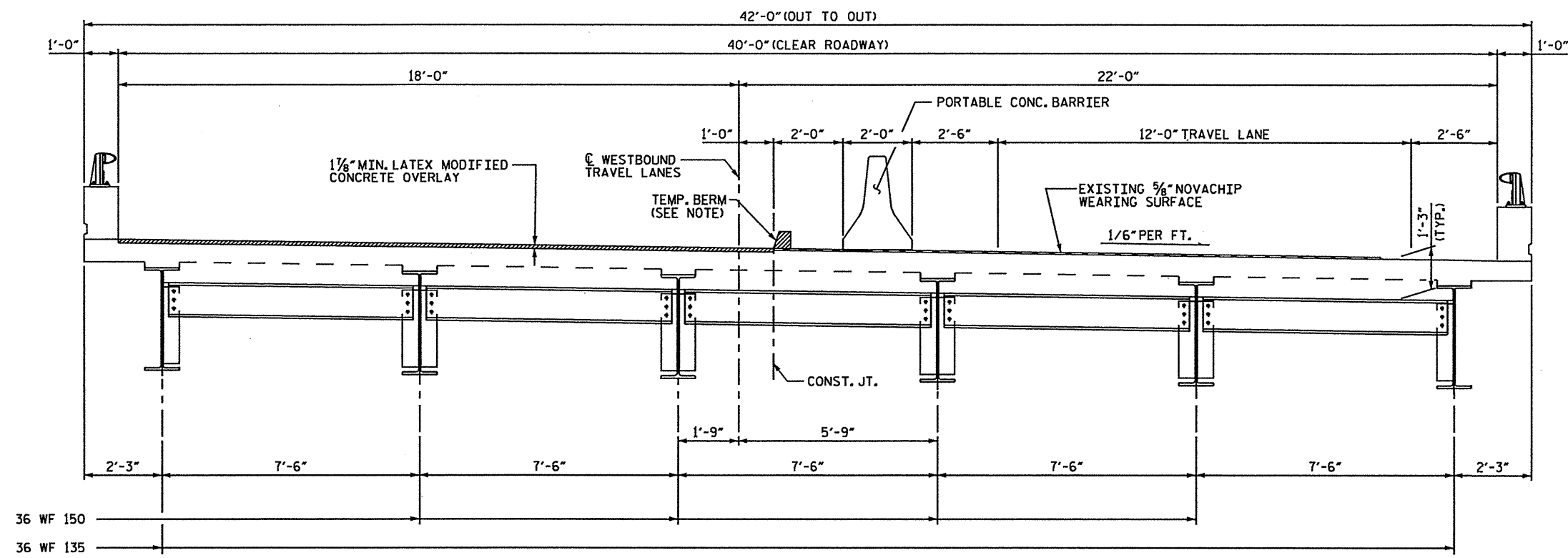
STATE OF NORTH CAROLINA
 DEPARTMENT OF TRANSPORTATION
 RALEIGH

PLAN OF SPANS
 FOR DECK REPAIR

DECK REHAB. FOR BRIDGE NO. 289

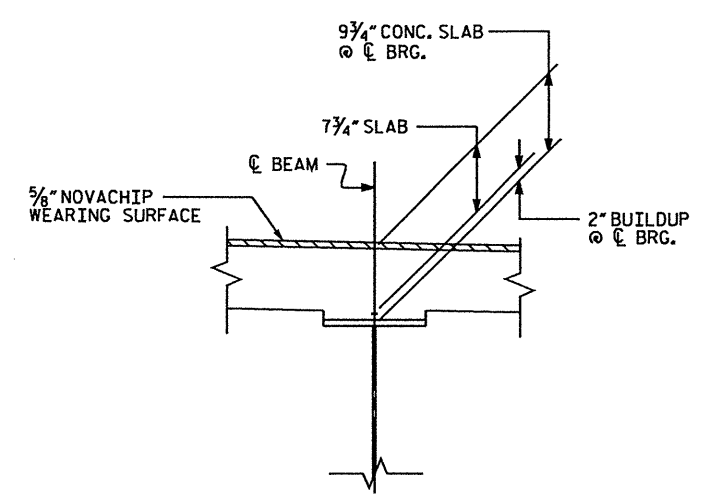
REVISIONS						SHEET NO.
NO.	BY	DATE	NO.	BY	DATE	5-4
1			3			TOTAL SHEETS 18
2			4			

DRAWN BY : M.A. ALLEN DATE : 4-09
 CHECKED BY : B.C. HANKS DATE : 4-09

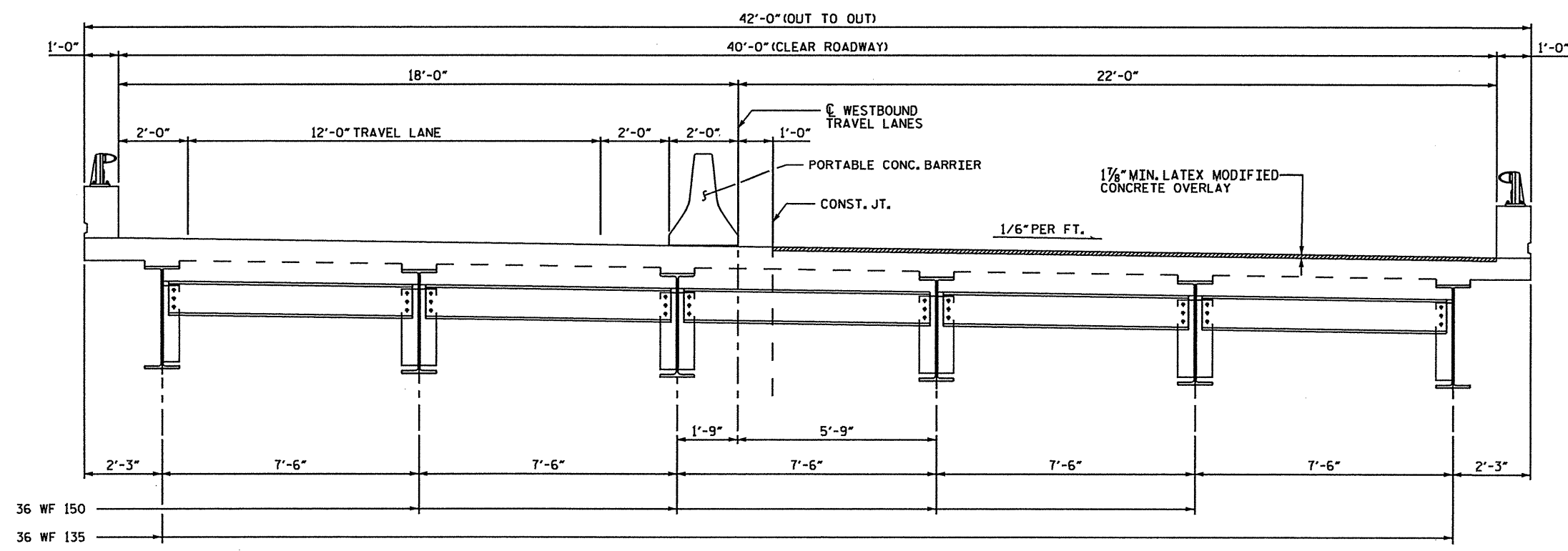


TYP. SECTION - STAGE I
(SHOWING DIAPHRAGMS AT CONSTRUCTION JOINTS)

NOTE:
WATER & CONCRETE SLURRY FROM HYDRO-DEMOLITION SHALL NOT BE ALLOWED TO DRAIN ACROSS TRAVEL LANES. CONTRACTOR SHALL PROVIDE A METHOD TO CONTROL THE WATER.



EXIST. SLAB BUILDUP



TYP. SECTION - STAGE II
(SHOWING DIAPHRAGMS AT CONSTRUCTION JOINTS)

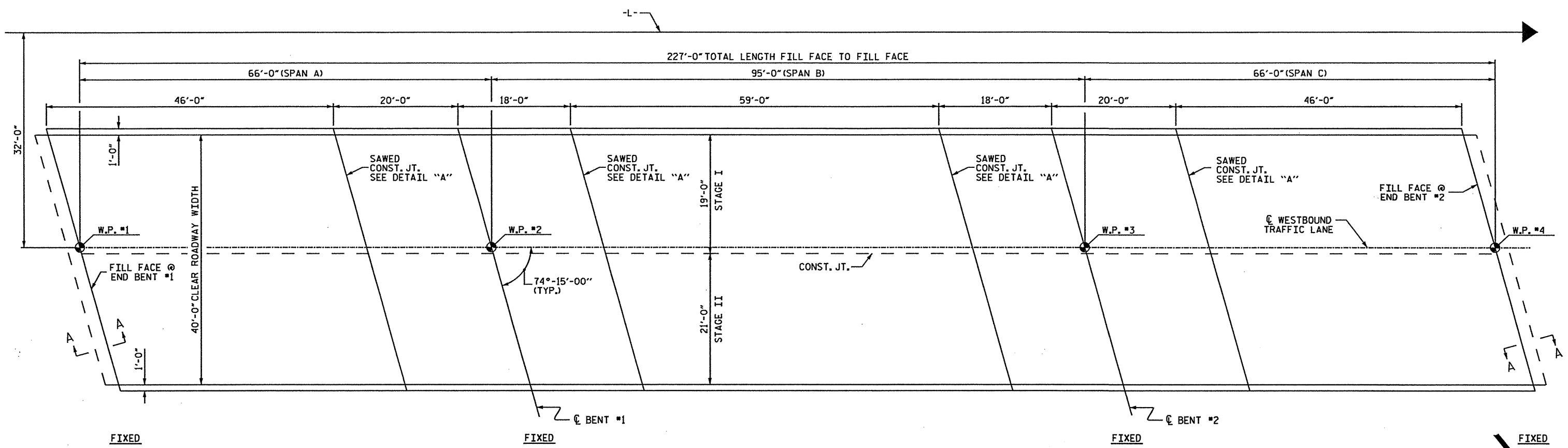
PROJECT NO. B-5179A
BUNCOMBE COUNTY
STATION: 266+99.58 -L-

STATE OF NORTH CAROLINA
DEPARTMENT OF TRANSPORTATION
RALEIGH
TYPICAL SECTION

DECK REHAB. FOR BRIDGE NO. 314

REVISIONS						SHEET NO.
NO.	BY	DATE	NO.	BY	DATE	S-5
1			3			TOTAL SHEETS
2			4			18

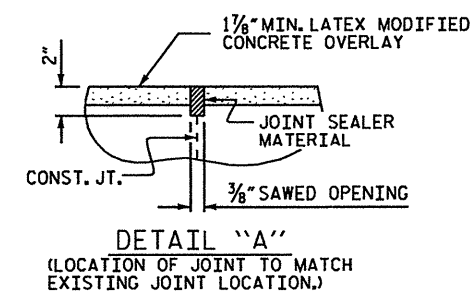
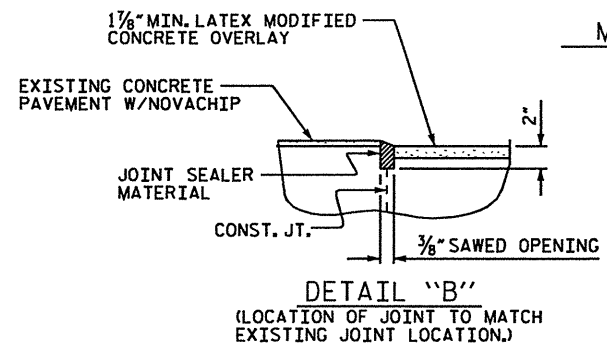
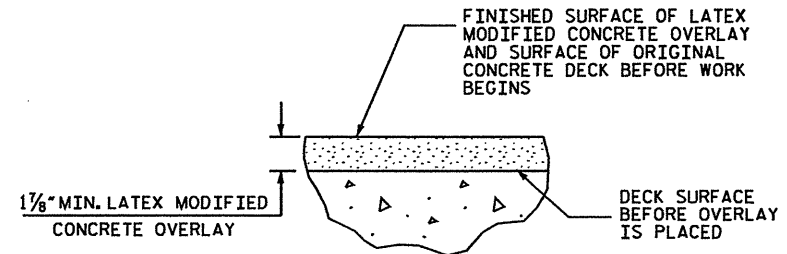
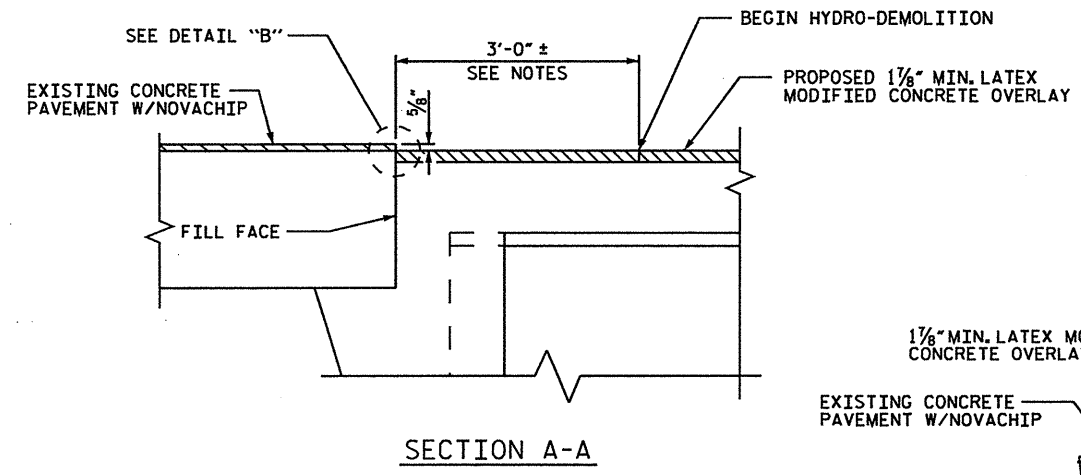
DRAWN BY : M.A. ALLEN DATE : 03-09
CHECKED BY : R.W. WRIGHT DATE : 03-09



PLAN OF SPANS

NOTES:

- FOR REPAIR OF BRIDGE DECKS WITH LATEX MODIFIED CONCRETE, SEE SPECIAL PROVISIONS.
- FOR HYDRO-DEMOLITION, SEE SPECIAL PROVISIONS.
- THE CONTRACTOR MUST COLLECT, TREAT AND DISPOSE OF RUN-OFF WATER FROM THE HYDRO-DEMOLITION PROCESS, SEE SPECIAL PROVISIONS.
- THE CONSTRUCTION JOINTS IN THE DECK SHALL BE SAWED NO MORE THAN 3 HOURS AFTER THE LATEX MODIFIED OVERLAY IS CAST. THE JOINT SHALL BE CLEANED OF ALL DEBRIS BEFORE THE SEALANT IS APPLIED. THE JOINT SEALER MATERIAL SHALL CONFORM TO THE REQUIREMENTS OF TYPE SL LOW MODULUS SILICONE SEALANT.
- THE BOUNDARIES OF AREAS IDENTIFIED FOR CLASS III SURFACE PREPARATION ARE APPROXIMATE. THE CONTRACTOR SHALL PROVIDE A METHOD OF HANDLING UNEXPECTED BLOW THROUGH OF THE DECK. SEE DETAIL.
- SURFACE PREPARATION FOR 3'-0" BEYOND FILL FACE SHALL BE PERFORMED USING HAND TOOLS OR OTHER APPROVED METHOD WHICH WILL NOT DAMAGE THE NOVACHIP OVERLAY ON THE APPROACHES.
- LATEX MODIFIED CONCRETE SHALL BE LATEX MODIFIED CONCRETE-VERY EARLY STRENGTH.
- FOR LATEX MODIFIED CONCRETE-VERY EARLY STRENGTH, SEE SPECIAL PROVISIONS.



TOTAL BILL OF MATERIAL								
DECK SCARIFICATION	CLASS I* SURFACE PREPARATION	CLASS II* SURFACE PREPARATION	CLASS III* SURFACE PREPARATION	HYDRO-DEMOLITION	CLASS AA* CONCRETE	LATEX MODIFIED CONCRETE	GROOVING BRIDGE FLOORS	PAVEMENT MARKINGS (POLYUREA)
SO. YDS.	SO. YDS.	SO. YDS.	SO. YDS.	SO. YDS.	CU. YDS.	CU. YDS.	SO. FT.	LIN. FEET
1010	953	57	0	1010	0	100	8400	570

* QUANTITIES ARE SHOWN FOR INFORMATIONAL PURPOSES ONLY.
 ** NO LOCATIONS ARE ANTICIPATED. IF ANY LOCATIONS ARE ENCOUNTERED PRIOR TO OR DURING HYDRO-DEMOLITION, SEE "TYP. BLOW THRU" CONTAINMENT AND FORMWORK" DETAIL.

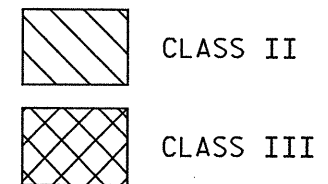
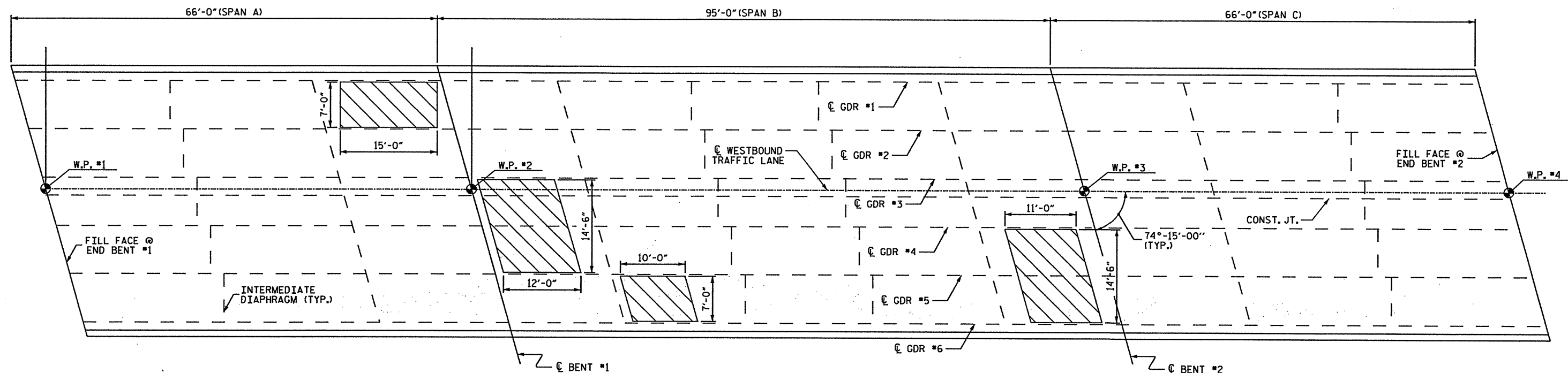
PROJECT NO. B-5179A
 BUNCOMBE COUNTY
 STATION: 266+99.58 -L-
 SHEET 1 OF 2

STATE OF NORTH CAROLINA
 DEPARTMENT OF TRANSPORTATION
 RALEIGH

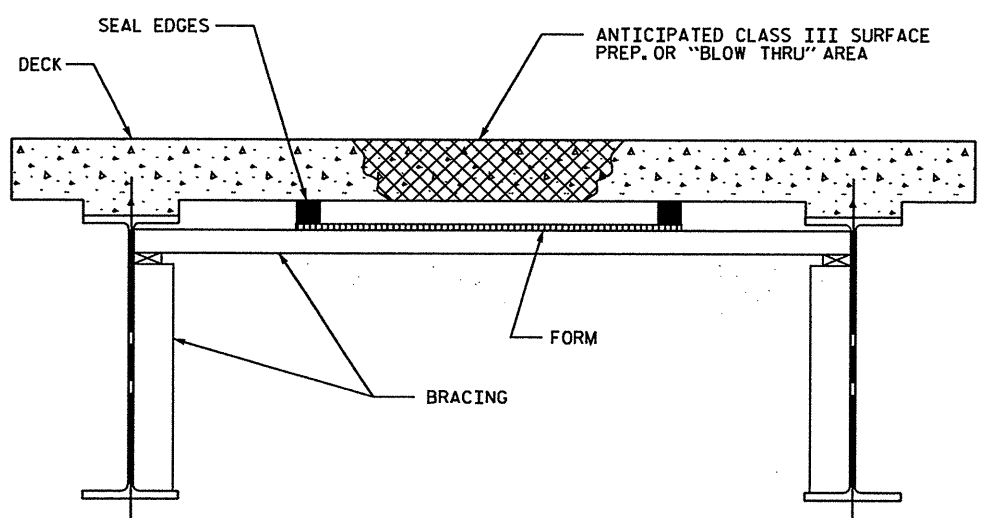
PLAN OF SPANS
 FOR DECK REPAIR

DECK REHAB. FOR BRIDGE NO. 314

REVISIONS						SHEET NO.
NO.	BY	DATE	NO.	BY	DATE	S-6
1			3			TOTAL SHEETS 18
2			4			



PLAN OF SPANS - DECK REPAIRS



TYP. "BLOW THRU" CONTAINMENT AND FORMWORK

A METHOD TO CAPTURE WATER AND DEBRIS FROM BLOW THRU DURING HYDRO-DEMOLITION SHALL BE INSTALLED IN AREAS INDICATED AS CLASS III SURFACE PREPARATION.

SUBMIT DETAILS OF PROPOSED FORMWORK FOR APPROVAL PRIOR TO BEGINNING WORK.

COSTS FOR INSTALLING AND REMOVING FORMWORK SHALL BE INCIDENTAL TO THE PRICE PER SQ. YARD OF HYDRO-DEMOLITION.

PROJECT NO. B-5179A
BUNCOMBE COUNTY
 STATION: 266+99.58 -L-

SHEET 2 OF 2

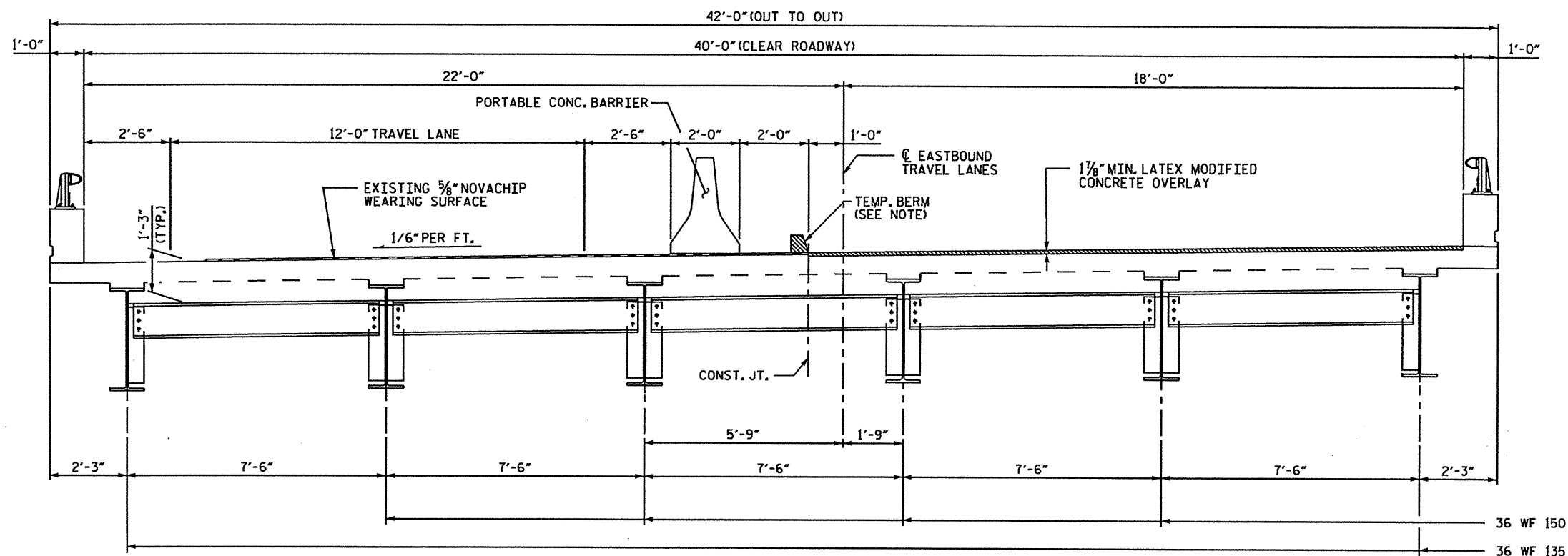
STATE OF NORTH CAROLINA
 DEPARTMENT OF TRANSPORTATION
 RALEIGH

PLAN OF SPANS
 FOR DECK REPAIR

DECK REHAB. FOR BRIDGE NO. 314

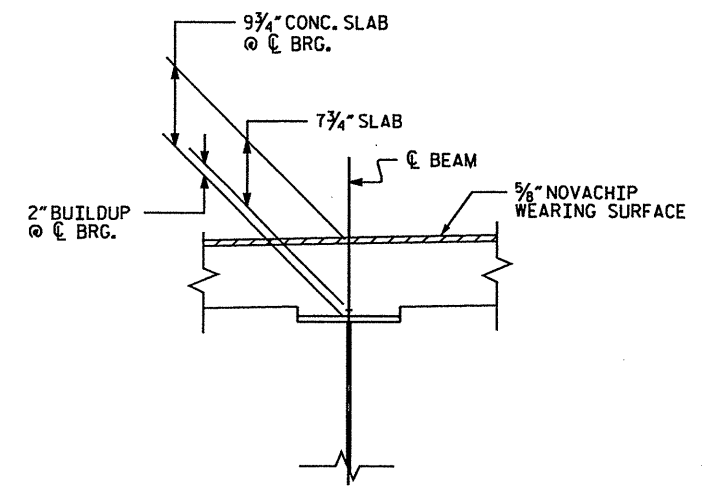
REVISIONS						SHEET NO. S-7
NO.	BY	DATE	NO.	BY	DATE	
1			3			TOTAL SHEETS 18
2			4			

DRAWN BY : R.W. WRIGHT DATE : 03-09
 CHECKED BY : M.A. ALLEN DATE : 03-09

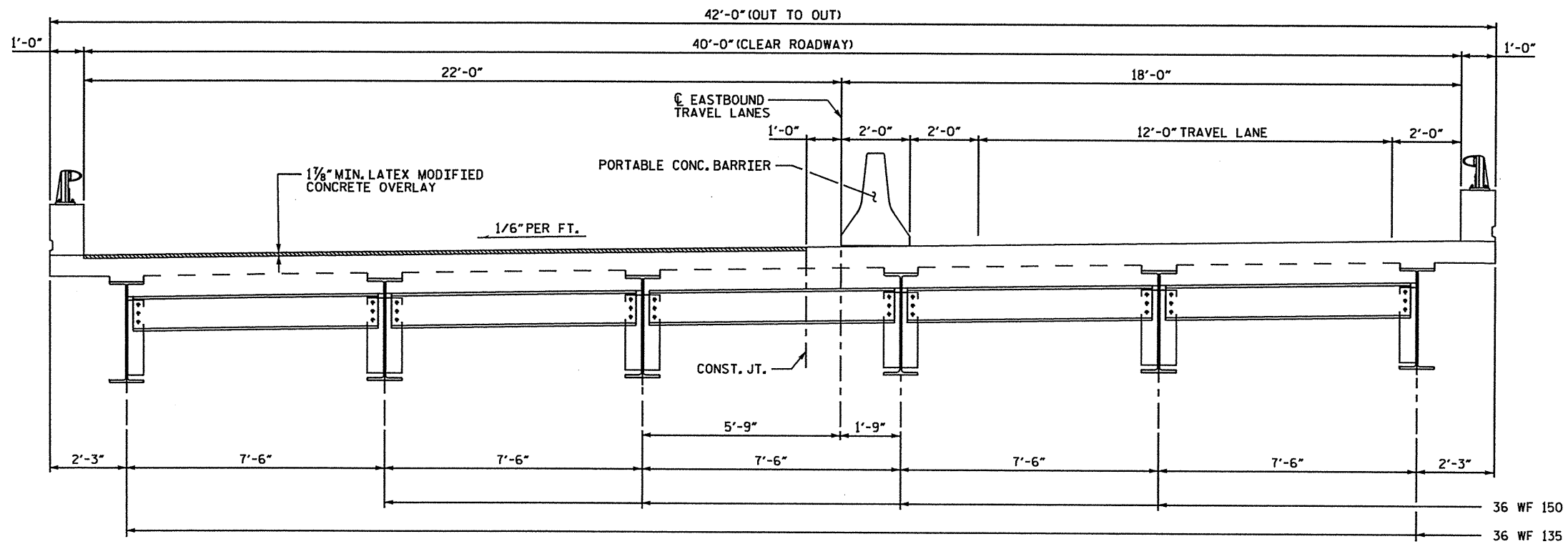


TYP. SECTION - STAGE I
(SHOWING DIAPHRAGMS AT CONSTRUCTION JOINTS)

NOTE:
WATER & CONCRETE SLURRY FROM HYDRO-DEMOLITION SHALL NOT BE ALLOWED TO DRAIN ACROSS TRAVEL LANES. CONTRACTOR SHALL PROVIDE A METHOD TO CONTROL THE WATER.



EXIST. SLAB BUILDUP



TYP. SECTION - STAGE II
(SHOWING DIAPHRAGMS AT CONSTRUCTION JOINTS)

PROJECT NO. B-5179A
BUNCOMBE COUNTY
STATION: 266+99.58 -L-

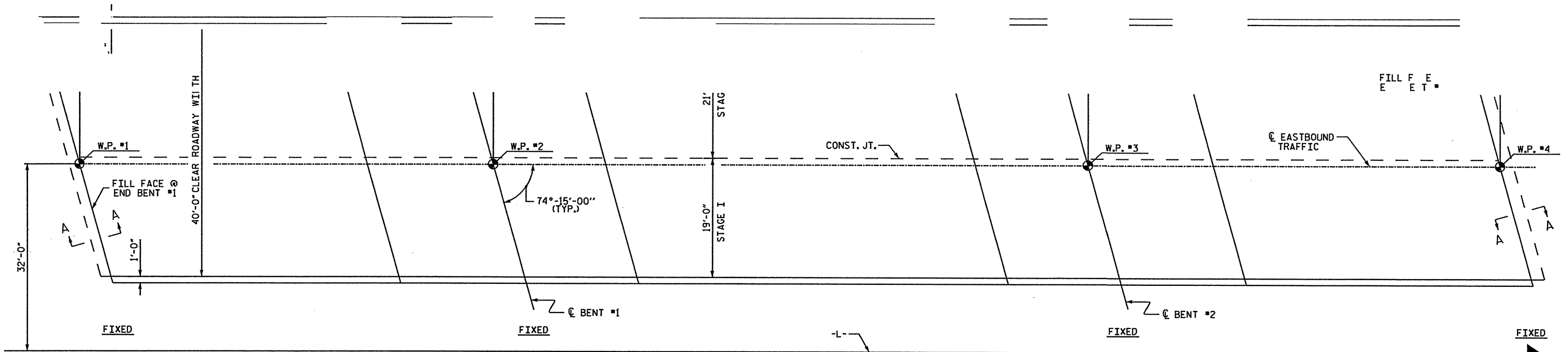
STATE OF NORTH CAROLINA
DEPARTMENT OF TRANSPORTATION
RALEIGH
TYPICAL SECTION

DECK REHAB. FOR BRIDGE NO. 316

REVISIONS					SHEET NO.
NO.	BY	DATE	NO.	BY	DATE
1			3		
2			4		

TOTAL SHEETS 18

DRAWN BY: M.A. ALLEN DATE: 03-09
CHECKED BY: R.W. WRIGHT DATE: 03-09



NOTES:

FOR REPAIR OF BRIDGE DECKS WITH LATEX MODIFIED CONCRETE, SEE SPECIAL PROVISIONS.

FOR HYDRO-DEMOLITION, SEE SPECIAL PROVISIONS.

THE CONTRACTOR MUST COLLECT, TREAT AND DISPOSE OF RUN-OFF WATER FROM THE HYDRO-DEMOLITION PROCESS, SEE SPECIAL PROVISIONS.

THE CONSTRUCTION JOINTS IN THE DECK SHALL BE SAWS NO MORE THAN 3 HOURS AFTER THE LATEX MODIFIED OVERLAY IS CAST. THE JOINT SHALL BE CLEANED OF ALL DEBRIS BEFORE THE SEALANT IS APPLIED. THE JOINT SEALER MATERIAL SHALL CONFORM TO THE REQUIREMENTS OF TYPE SL LOW MODULUS SILICONE SEALANT.

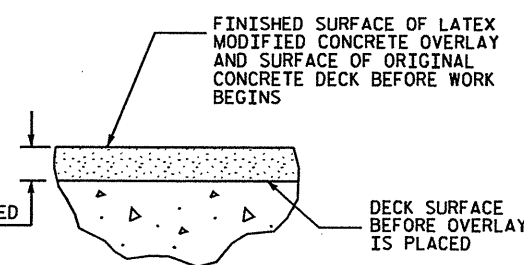
THE BOUNDARIES OF AREAS IDENTIFIED FOR CLASS III SURFACE PREPARATION ARE APPROXIMATE. THE CONTRACTOR SHALL PROVIDE A METHOD OF HANDLING UNEXPECTED BLOW THROUGH OF THE DECK. SEE DETAIL.

SURFACE PREPARATION FOR 3'-0" BEYOND FILL FACE SHALL BE PERFORMED USING HAND TOOLS OR OTHER APPROVED METHOD WHICH WILL NOT DAMAGE THE NOVACHIP OVERLAY ON THE APPROACHES.

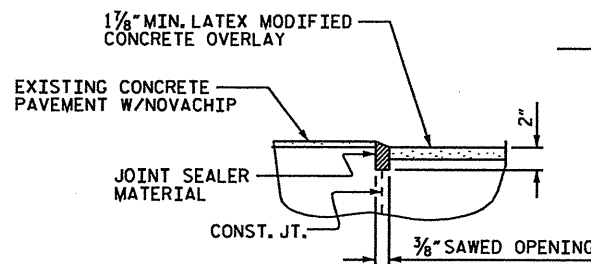
LATEX MODIFIED CONCRETE SHALL BE LATEX MODIFIED CONCRETE-VERY EARLY STRENGTH.

FOR LATEX MODIFIED CONCRETE-VERY EARLY STRENGTH, SEE SPECIAL PROVISIONS.

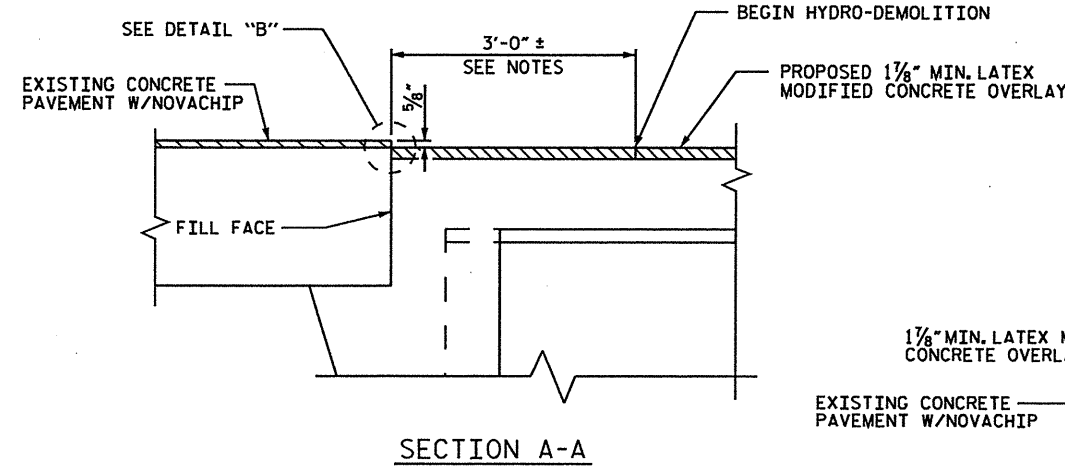
PLAN OF SPANS



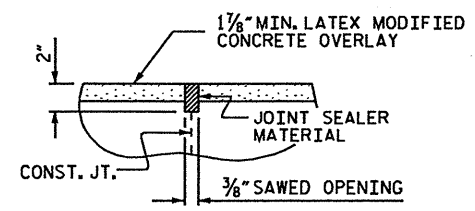
DETAIL FOR LATEX MODIFIED CONCRETE OVERLAY



DETAIL "B"
(LOCATION OF JOINT TO MATCH EXISTING JOINT LOCATION.)



SECTION A-A



DETAIL "A"
(LOCATION OF JOINT TO MATCH EXISTING JOINT LOCATION.)

TOTAL BILL OF MATERIAL								
DECK SCARIFICATION	CLASS I* SURFACE PREPARATION	CLASS II* SURFACE PREPARATION	CLASS III** SURFACE PREPARATION	HYDRO-DEMOLITION	CLASS AA* CONCRETE	LATEX MODIFIED CONCRETE	GROOVING BRIDGE FLOORS	PAVEMENT MARKINGS (POLYUREA)
SO. YDS.	SO. YDS.	SO. YDS.	SO. YDS.	SO. YDS.	CU. YDS.	CU. YDS.	SO. FT.	LIN. FEET
1090	918	172	0	1090	0	110	9020	610

* QUANTITIES ARE SHOWN FOR INFORMATIONAL PURPOSES ONLY.

** NO LOCATIONS ARE ANTICIPATED. IF ANY LOCATIONS ARE ENCOUNTERED PRIOR TO OR DURING HYDRO-DEMOLITION, SEE "TYP. BLOW THRU CONTAINMENT AND FORMWORK" DETAIL.

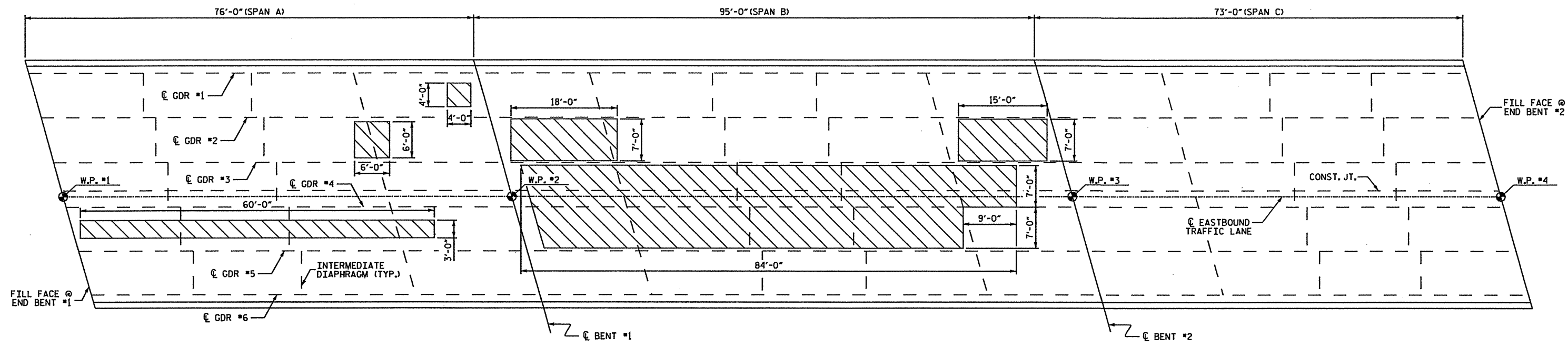
PROJECT NO. B-5179A
BUNCOMBE COUNTY
 STATION: 266+99.58 -L-
 SHEET 1 OF 2

STATE OF NORTH CAROLINA
 DEPARTMENT OF TRANSPORTATION
 RALEIGH

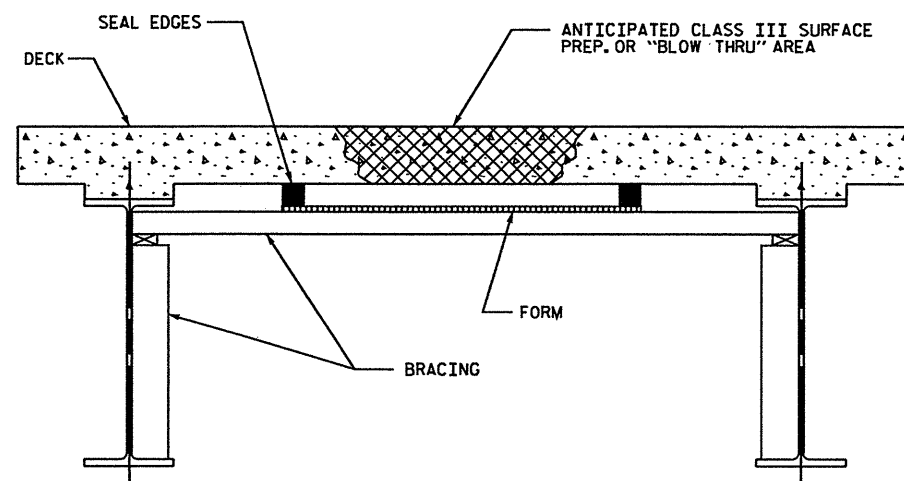
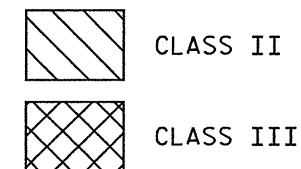
**PLAN OF SPANS
 FOR DECK REPAIR**

DECK REHAB. FOR BRIDGE NO. 316

REVISIONS					SHEET NO.
NO.	BY	DATE	NO.	DATE	5-9
1			3		TOTAL SHEETS 18
2			4		



PLAN OF SPANS - DECK REPAIRS



TYP. "BLOW THRU" CONTAINMENT AND FORMWORK

A METHOD TO CAPTURE WATER AND DEBRIS FROM BLOW THRU DURING HYDRO-DEMOLITION SHALL BE INSTALLED IN AREAS INDICATED AS CLASS III SURFACE PREPARATION.
 SUBMIT DETAILS OF PROPOSED FORMWORK FOR APPROVAL PRIOR TO BEGINNING WORK.
 COSTS FOR INSTALLING AND REMOVING FORMWORK SHALL BE INCIDENTAL TO THE PRICE PER SQ. YARD OF HYDRO-DEMOLITION.

PROJECT NO. B-5179A
BUNCOMBE COUNTY
 STATION: 266+99.58 -L-

SHEET 2 OF 2

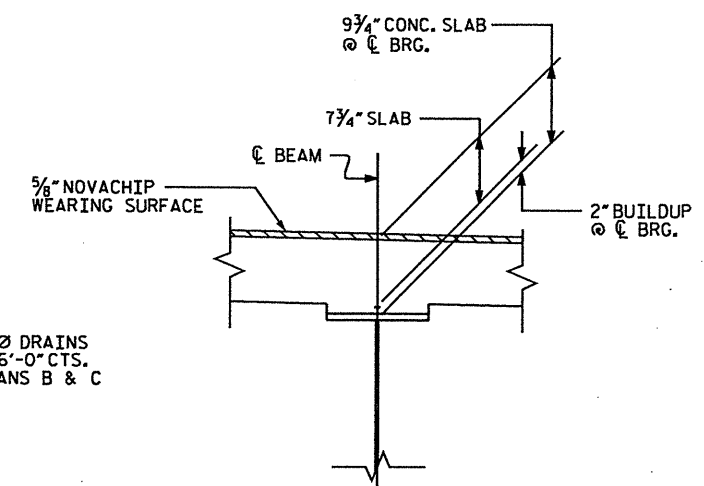
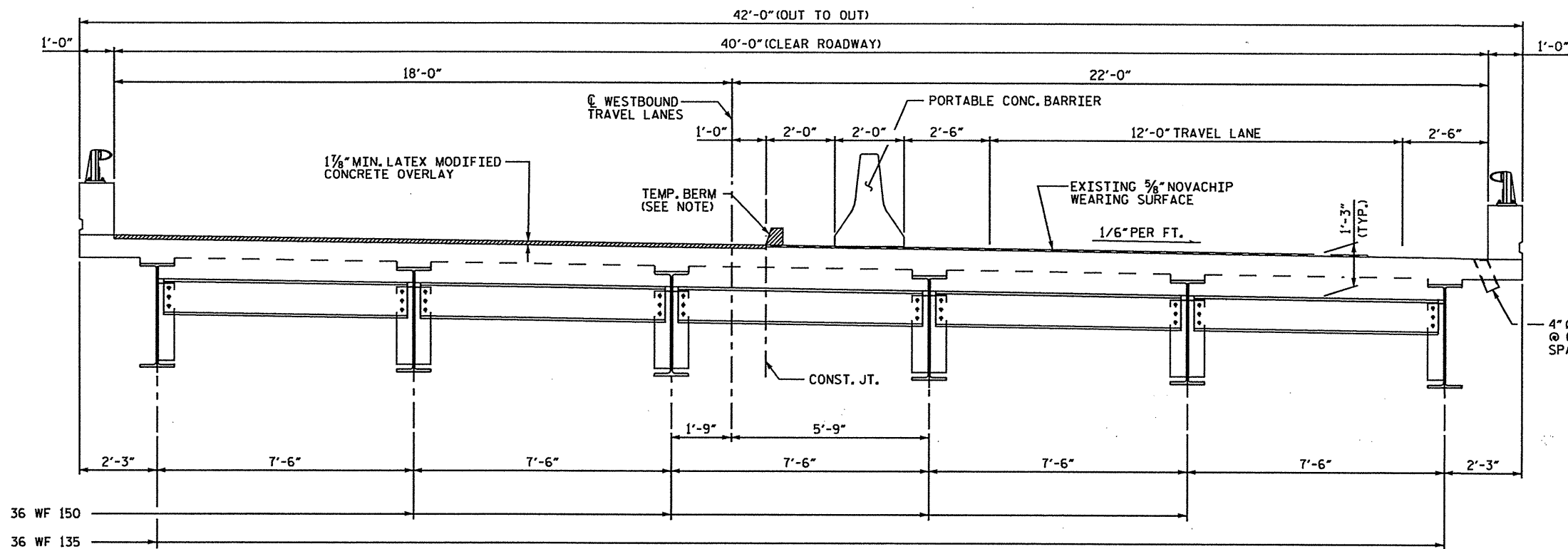
STATE OF NORTH CAROLINA
 DEPARTMENT OF TRANSPORTATION
 RALEIGH

**PLAN OF SPANS
 FOR DECK REPAIR**

DECK REHAB. FOR BRIDGE NO. 316

REVISIONS						SHEET NO.
NO.	BY	DATE	NO.	BY	DATE	S-10
1			3			TOTAL SHEETS
2			4			18

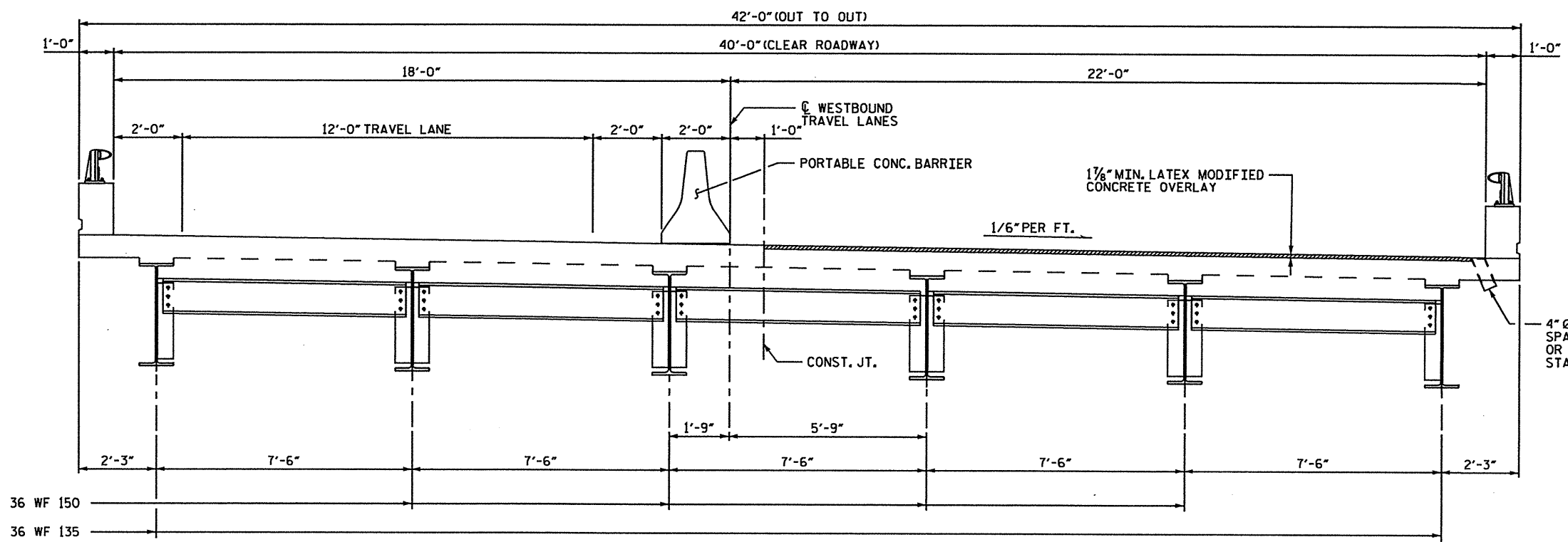
DRAWN BY: R.W. WRIGHT DATE: 03-09
 CHECKED BY: M.A. ALLEN DATE: 03-09



EXIST. SLAB BUILDUP

TYP. SECTION - STAGE I
(SHOWING DIAPHRAGMS AT CONSTRUCTION JOINTS)

NOTE:
WATER & CONCRETE SLURRY FROM HYDRO-DEMOLITION SHALL NOT BE ALLOWED TO DRAIN ACROSS TRAVEL LANES. CONTRACTOR SHALL PROVIDE A METHOD TO CONTROL THE WATER.



4" Ø DRAINS @ 6'-0" CTS. SPANS B & C (TEMP. PLUG OR CAP DRAINS PRIOR TO STAGE II HYDRO-DEMOLITION.)

TYP. SECTION - STAGE II
(SHOWING DIAPHRAGMS AT CONSTRUCTION JOINTS)

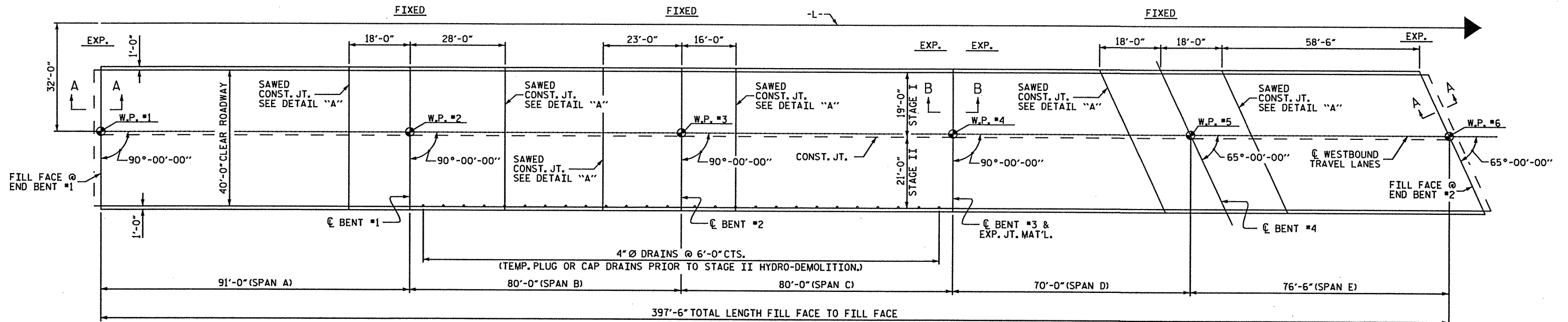
PROJECT NO. B-5179A
BUNCOMBE COUNTY
STATION: 327+26.20 -L-

STATE OF NORTH CAROLINA
DEPARTMENT OF TRANSPORTATION
RALEIGH
TYPICAL SECTION

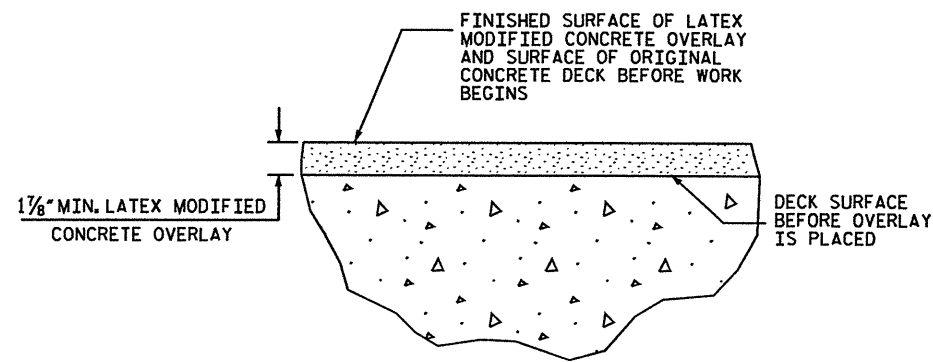
DECK REHAB. FOR BRIDGE NO. 329

DRAWN BY: M.A. ALLEN DATE: 03-09
CHECKED BY: R.W. WRIGHT DATE: 03-09

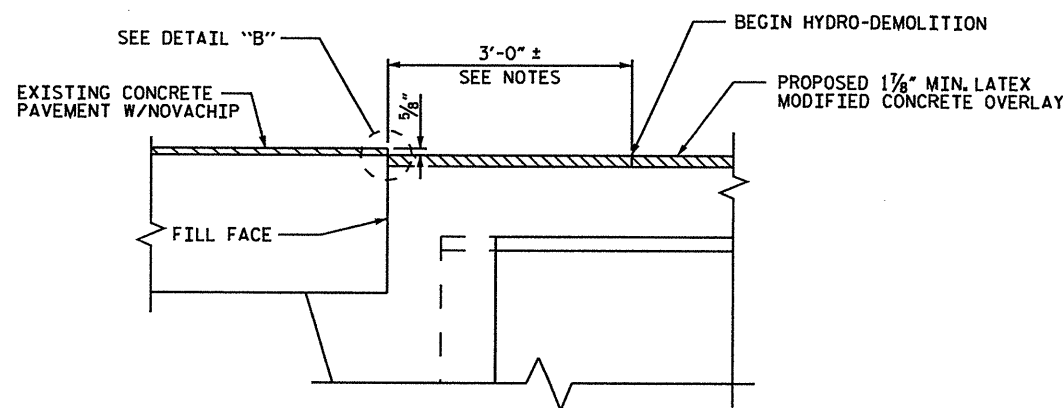
REVISIONS						SHEET NO.
NO.	BY	DATE	NO.	BY	DATE	S-11
1			3			TOTAL SHEETS 18
2			4			



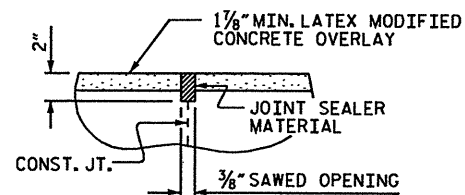
PLAN OF SPANS



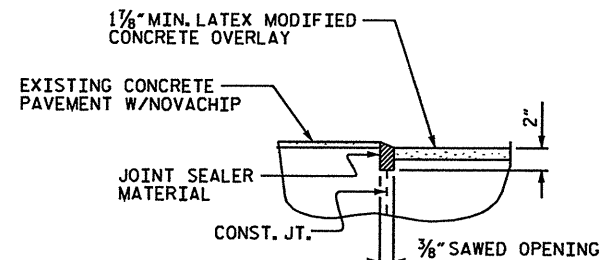
DETAIL FOR LATEX MODIFIED CONCRETE OVERLAY



SECTION A-A



DETAIL "A"
(LOCATION OF JOINT TO MATCH EXISTING JOINT LOCATION.)



DETAIL "B"
(LOCATION OF JOINT TO MATCH EXISTING JOINT LOCATION.)

NOTES:

- FOR REPAIR OF BRIDGE DECKS WITH LATEX MODIFIED CONCRETE, SEE SPECIAL PROVISIONS.
- DECK DRAINS SHALL BE SEALED PRIOR TO BEGINNING REPAIR OF BRIDGE DECKS WITH LATEX MODIFIED CONCRETE, SEE SPECIAL PROVISIONS.
- FOR HYDRO-DEMOLITION, SEE SPECIAL PROVISIONS.
- THE CONTRACTOR MUST COLLECT, TREAT AND DISPOSE OF RUN-OFF WATER FROM THE HYDRO-DEMOLITION PROCESS, SEE SPECIAL PROVISIONS.
- THE CONSTRUCTION JOINTS IN THE DECK SHALL BE SAWED NO MORE THAN 3 HOURS AFTER THE LATEX MODIFIED OVERLAY IS CAST. THE JOINT SHALL BE CLEANED OF ALL DEBRIS BEFORE THE SEALANT IS APPLIED. THE JOINT SEALER MATERIAL SHALL CONFORM TO THE REQUIREMENTS OF TYPE SL LOW MODULUS SILICONE SEALANT.
- THE BOUNDARIES OF AREAS IDENTIFIED FOR CLASS III SURFACE PREPARATION ARE APPROXIMATE. THE CONTRACTOR SHALL PROVIDE A METHOD OF HANDLING UNEXPECTED BLOW THROUGH OF THE DECK. SEE DETAIL.
- SURFACE PREPARATION FOR 3'-0" BEYOND FILL FACE SHALL BE PERFORMED USING HAND TOOLS OR OTHER APPROVED METHOD WHICH WILL NOT DAMAGE THE NOVACHIP OVERLAY ON THE APPROACHES.
- THE NOMINAL UNCOMPRESSED SEAL WIDTH OF THE EVAZOTE JOINT SEAL SHALL BE 3/8" AT BENT #3. FOR EVAZOTE JOINT SEALS, SEE SPECIAL PROVISIONS.
- FOR ELASTOMERIC CONCRETE, SEE SPECIAL PROVISIONS.
- LATEX MODIFIED CONCRETE SHALL BE LATEX MODIFIED CONCRETE-VERY EARLY STRENGTH.
- FOR LATEX MODIFIED CONCRETE-VERY EARLY STRENGTH, SEE SPECIAL PROVISIONS.

PROJECT NO. B-5179A
BUNCOMBE COUNTY
 STATION: 327+26.20 -L-

SHEET 1 OF 3

STATE OF NORTH CAROLINA
 DEPARTMENT OF TRANSPORTATION
 RALEIGH

PLAN OF SPANS
 FOR DECK REPAIR

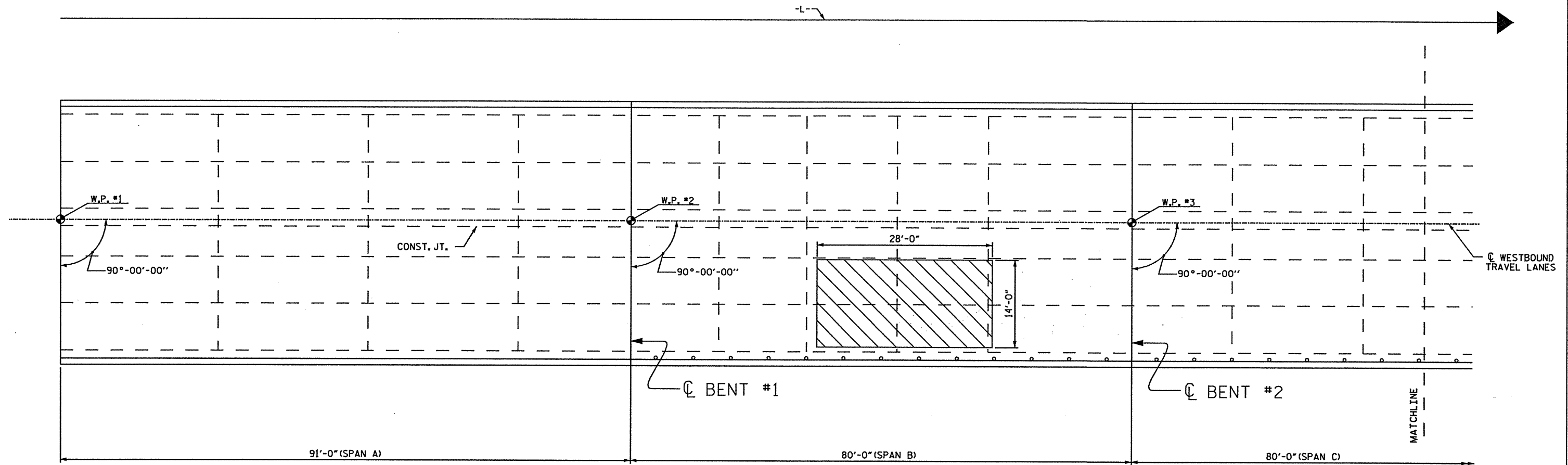
DECK REHAB. FOR BRIDGE NO. 329

REVISIONS						SHEET NO.
NO.	BY	DATE	NO.	BY	DATE	S-12
1			3			TOTAL SHEETS 18
2			4			

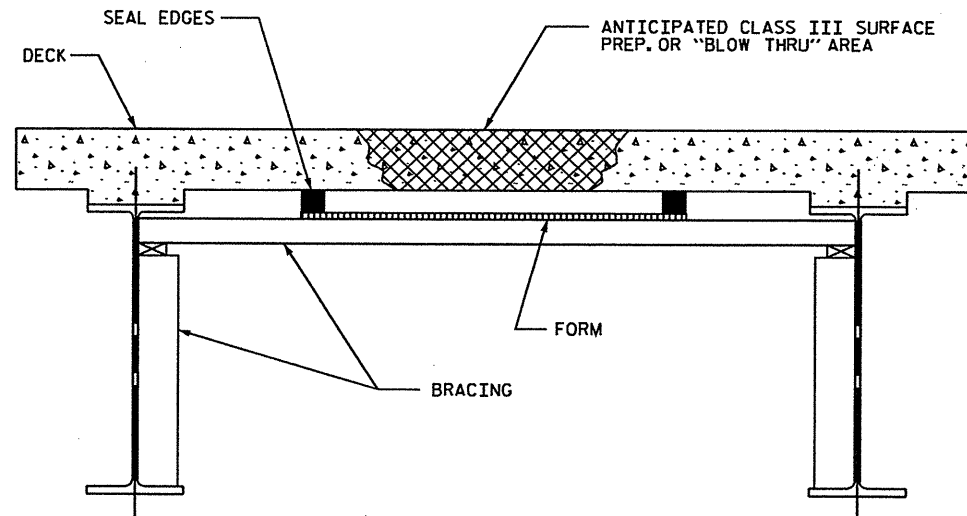
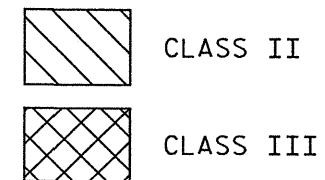
TOTAL BILL OF MATERIAL									
DECK SCARIFICATION	CLASS I* SURFACE PREPARATION	CLASS II* SURFACE PREPARATION	CLASS III* SURFACE PREPARATION	HYDRO-DEMOLITION	CLASS AA* CONCRETE	LATEX MODIFIED CONCRETE	EVAZOTE JOINT SEAL	GROOVING BRIDGE FLOORS	PAVEMENT MARKINGS (POLYUREA)
SO. YDS.	SO. YDS.	SO. YDS.	SO. YDS.	SO. YDS.	CU. YDS.	CU. YDS.	LUMP SUM	SO. FT.	LIN. FEET
1775	1700	75	1	1776	0.3	175	LUMP SUM	14720	985

* QUANTITIES ARE SHOWN FOR INFORMATIONAL PURPOSES ONLY.

DRAWN BY: R.W. WRIGHT DATE: 03-09
 CHECKED BY: M.A. ALLEN DATE: 03-09



PLAN OF SPANS - DECK REPAIRS



TYP. "BLOW THRU" CONTAINMENT AND FORMWORK

A METHOD TO CAPTURE WATER AND DEBRIS FROM BLOW THRU DURING HYDRO-DEMOLITION SHALL BE INSTALLED IN AREAS INDICATED AS CLASS III SURFACE PREPARATION.

SUBMIT DETAILS OF PROPOSED FORMWORK FOR APPROVAL PRIOR TO BEGINNING WORK.

COSTS FOR INSTALLING AND REMOVING FORMWORK SHALL BE INCIDENTAL TO THE PRICE PER SQ. YARD OF HYDRO-DEMOLITION.

PROJECT NO. B-5179A
BUNCOMBE COUNTY
 STATION: 327+26.20 -L-

SHEET 2 OF 3

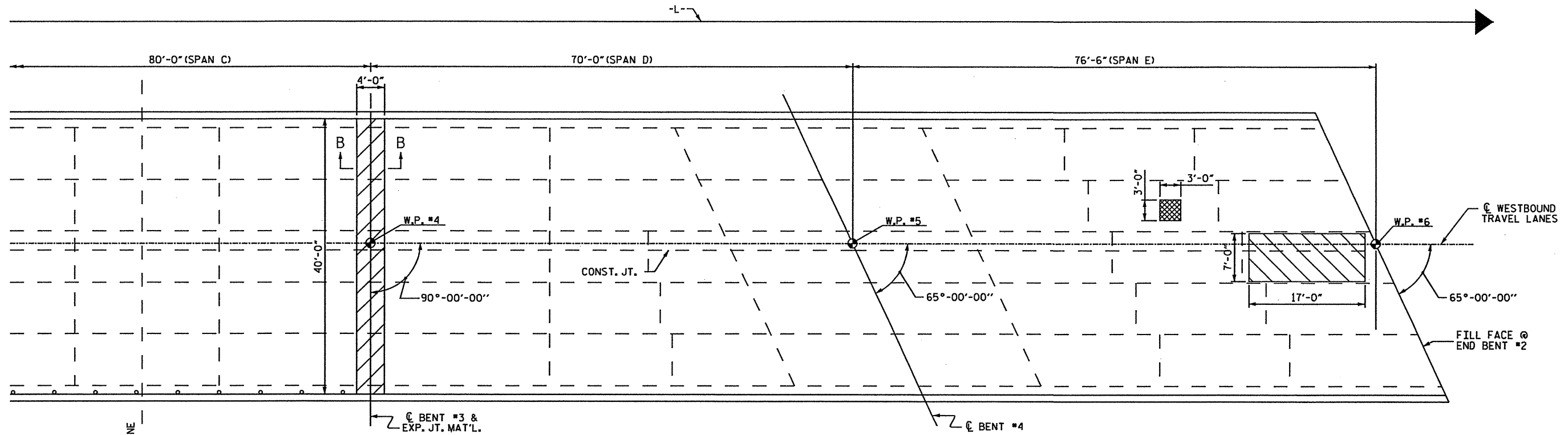
STATE OF NORTH CAROLINA
 DEPARTMENT OF TRANSPORTATION
 RALEIGH

PLAN OF SPANS
 FOR DECK REPAIR

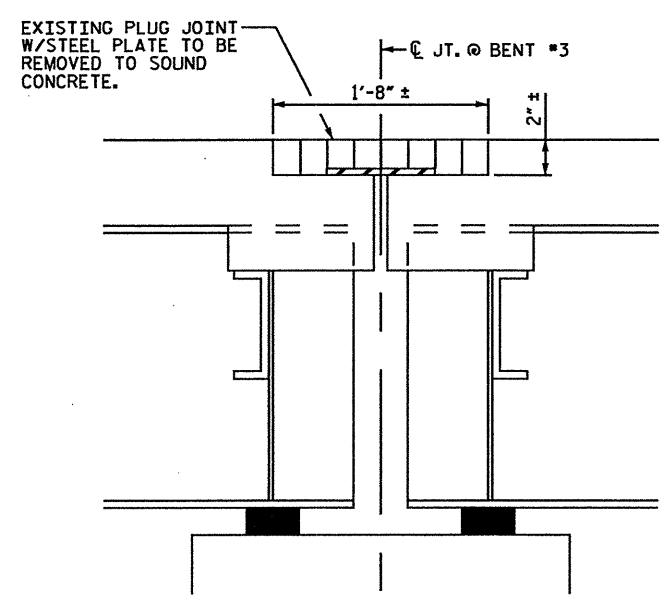
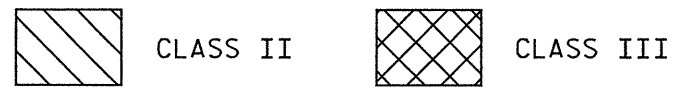
DECK REHAB. FOR BRIDGE NO. 329

REVISIONS						SHEET NO. S-13
NO.	BYs	DATEs	NO.	BYs	DATEs	
1			3			TOTAL SHEETS 18
2			4			

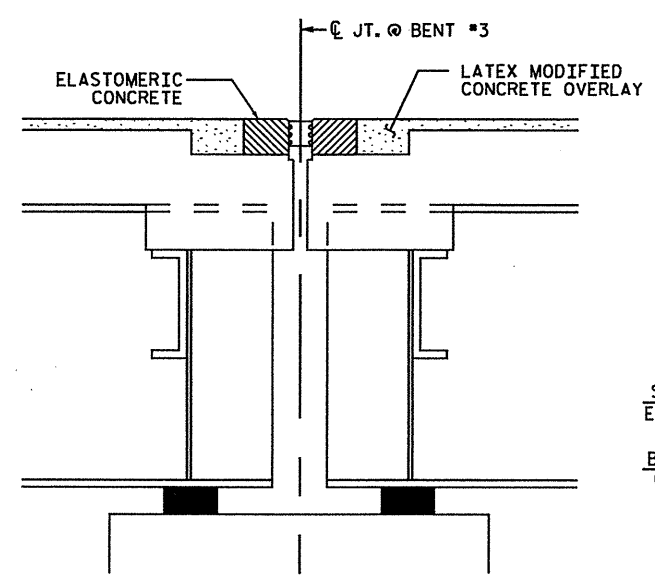
DRAWN BY : R.W. WRIGHT DATE : 03-09
 CHECKED BY : M.A. ALLEN DATE : 03-09



PLAN OF SPANS - DECK REPAIRS



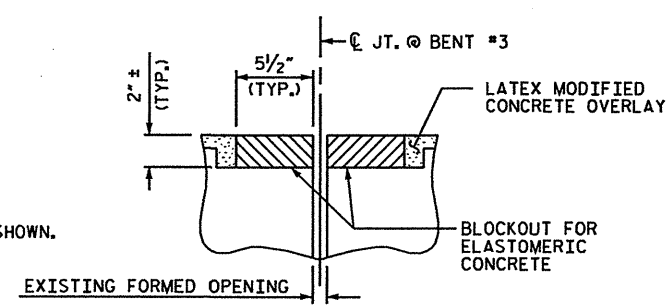
SECTION B-B
(EXISTING JOINT)



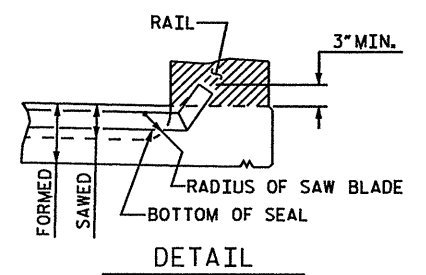
SECTION B-B
(PROPOSED JOINT REPLACEMENT DETAIL)

ELASTOMERIC CONCRETE	
BENT NO.	ELASTOMERIC CONCRETE * (CU. FT.)
3	6.1
TOTAL	6.1

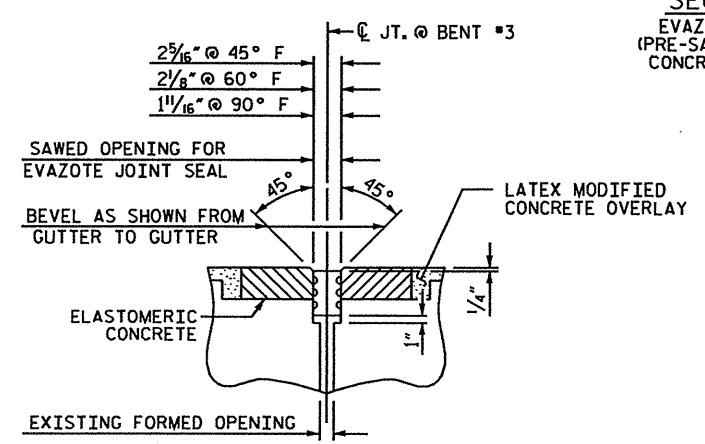
* BASED ON THE MINIMUM BLOCKOUT SHOWN.



SECTION B-B
EVAZOTE JOINT SEAL
(PRE-SAWED ELASTOMERIC CONCRETE DIMENSIONS)



DETAIL



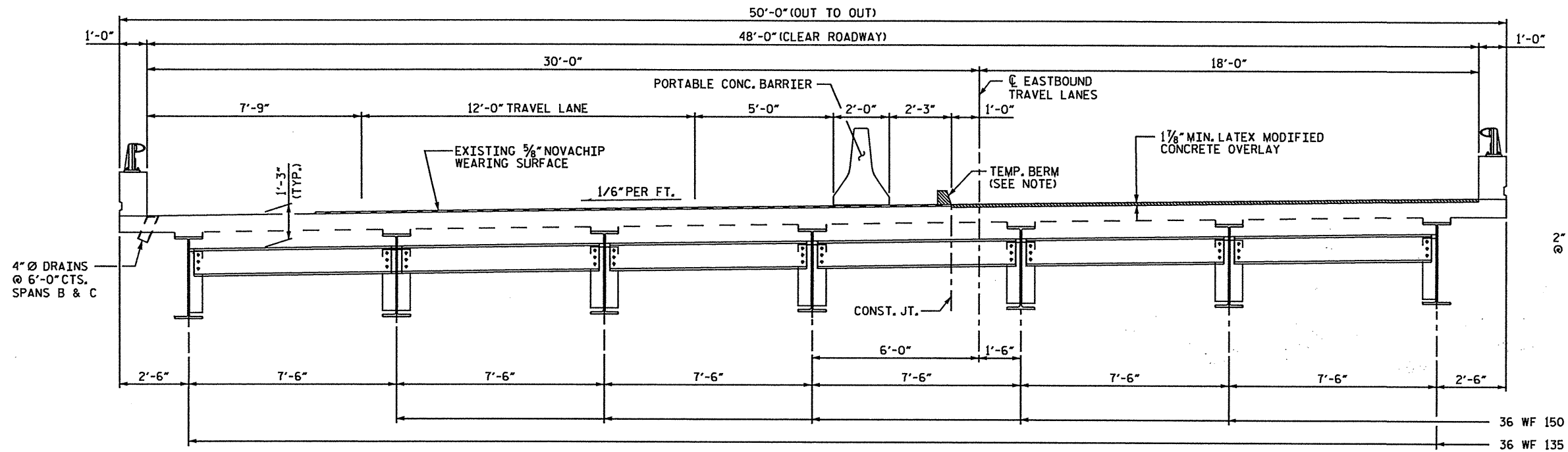
SECTION B-B
EVAZOTE JOINT SEAL
(EXPANSION)

PROJECT NO. B-5179A
BUNCOMBE COUNTY
STATION: 327+26.20 -L-
SHEET 3 OF 3

REVISIONS					SHEET NO.
NO.	BY	DATE	NO.	DATE	S-14
1			3		TOTAL SHEETS 18
2			4		

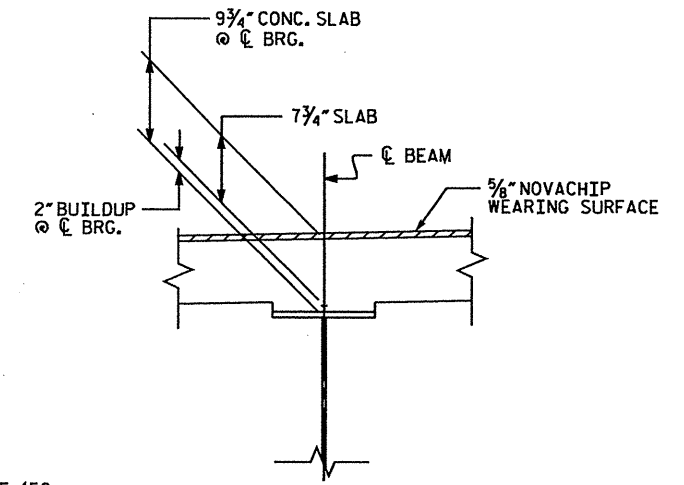
DRAWN BY: R.W. WRIGHT DATE: 03-09
CHECKED BY: M.A. ALLEN DATE: 03-09

DECK REHAB. FOR BRIDGE NO. 329

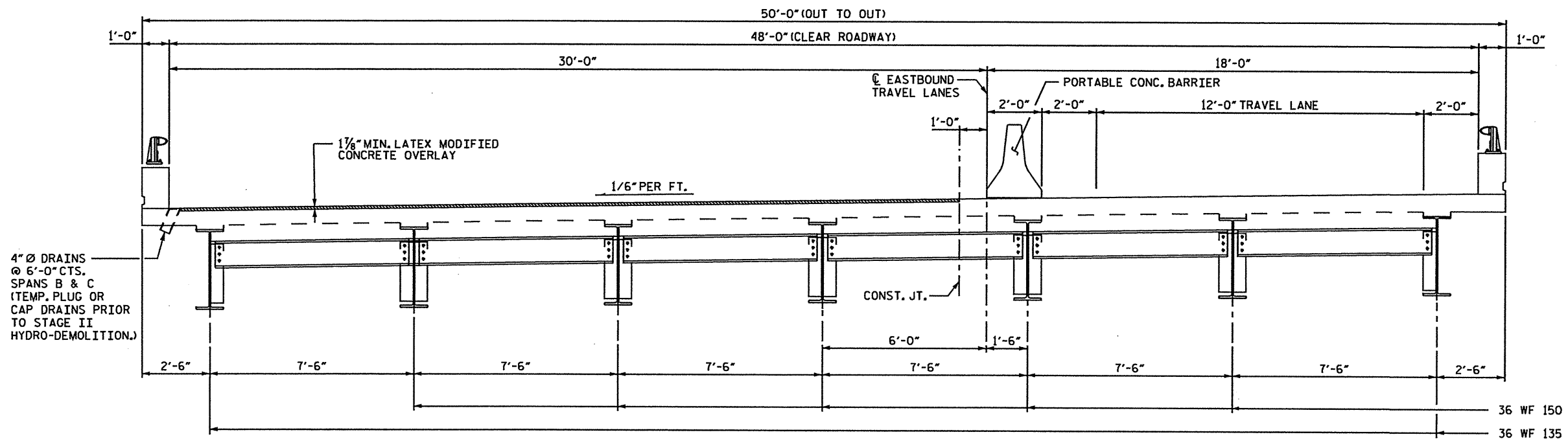


TYP. SECTION - STAGE I
(SHOWING DIAPHRAGMS AT CONSTRUCTION JOINTS)

NOTE:
WATER & CONCRETE SLURRY FROM HYDRO-DEMOLITION SHALL NOT BE ALLOWED TO DRAIN ACROSS TRAVEL LANES. CONTRACTOR SHALL PROVIDE A METHOD TO CONTROL THE WATER.



EXIST. SLAB BUILDUP



TYP. SECTION - STAGE II
(SHOWING DIAPHRAGMS AT CONSTRUCTION JOINTS)

PROJECT NO. B-5179A
BUNCOMBE COUNTY
STATION: 327+26.20 -L-

STATE OF NORTH CAROLINA
DEPARTMENT OF TRANSPORTATION
RALEIGH

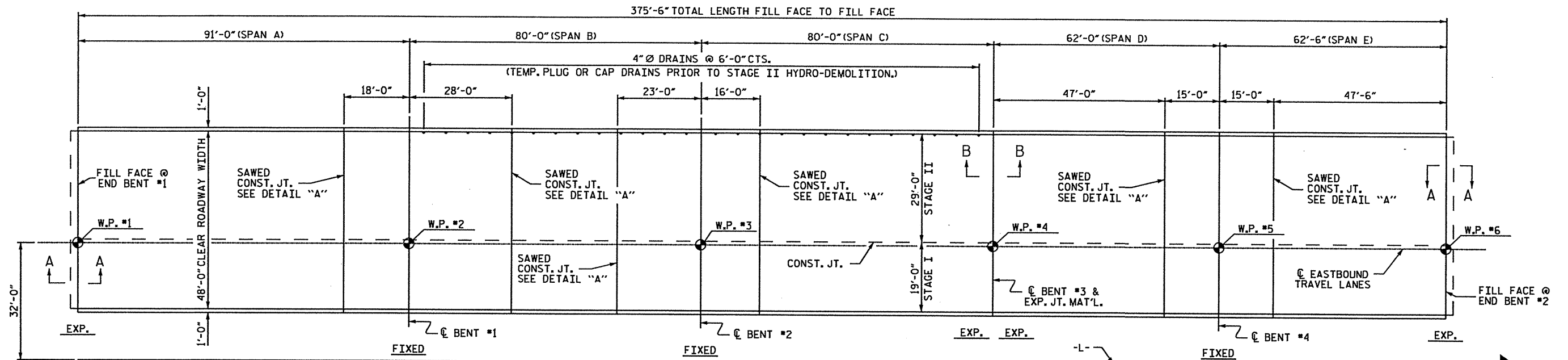
TYPICAL SECTION

DECK REHAB. FOR BRIDGE NO. 330

REVISIONS					SHEET NO.
NO.	BY	DATE	NO.	BY	DATE
1			3		
2			4		

TOTAL SHEETS 18

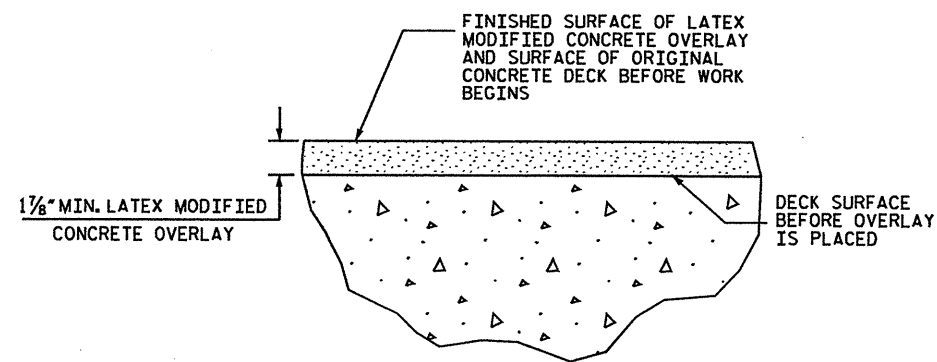
DRAWN BY: M.A. ALLEN DATE: 03-09
CHECKED BY: R.W. WRIGHT DATE: 03-09



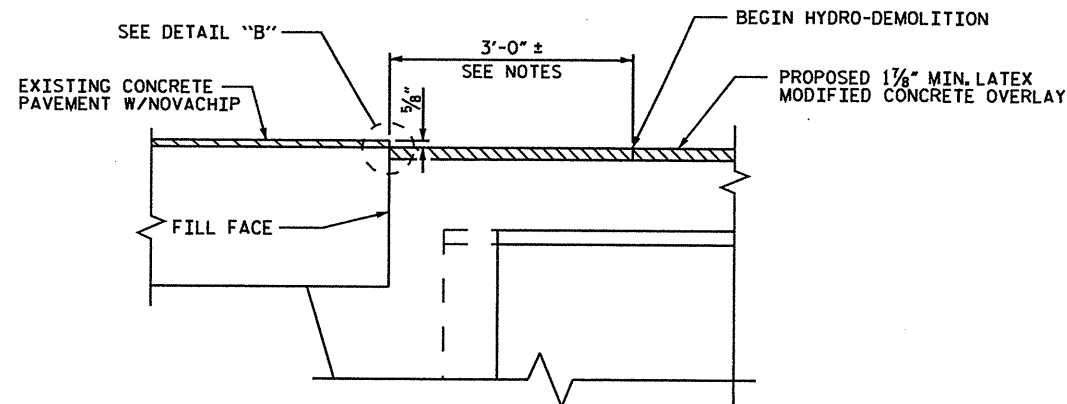
PLAN OF SPANS

NOTES:

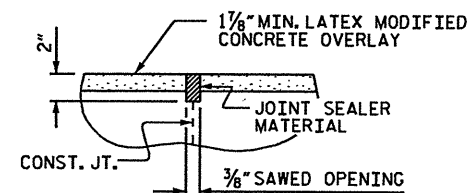
- FOR REPAIR OF BRIDGE DECKS WITH LATEX MODIFIED CONCRETE, SEE SPECIAL PROVISIONS.
- DECK DRAINS SHALL BE SEALED PRIOR TO BEGINNING REPAIR OF BRIDGE DECKS WITH LATEX MODIFIED CONCRETE, SEE SPECIAL PROVISIONS.
- FOR HYDRO-DEMOLITION, SEE SPECIAL PROVISIONS.
- THE CONTRACTOR MUST COLLECT, TREAT AND DISPOSE OF RUN-OFF WATER FROM THE HYDRO-DEMOLITION PROCESS, SEE SPECIAL PROVISIONS.
- THE CONSTRUCTION JOINTS IN THE DECK SHALL BE SAWED NO MORE THAN 3 HOURS AFTER THE LATEX MODIFIED OVERLAY IS CAST. THE JOINT SHALL BE CLEANED OF ALL DEBRIS BEFORE THE SEALANT IS APPLIED. THE JOINT SEALER MATERIAL SHALL CONFORM TO THE REQUIREMENTS OF TYPE SL LOW MODULUS SILICONE SEALANT.
- THE BOUNDARIES OF AREAS IDENTIFIED FOR CLASS III SURFACE PREPARATION ARE APPROXIMATE. THE CONTRACTOR SHALL PROVIDE A METHOD OF HANDLING UNEXPECTED BLOW THROUGH OF THE DECK. SEE DETAIL.
- SURFACE PREPARATION FOR 3'-0" BEYOND FILL FACE SHALL BE PERFORMED USING HAND TOOLS OR OTHER APPROVED METHOD WHICH WILL NOT DAMAGE THE NOVACHIP OVERLAY ON THE APPROACHES.
- THE NOMINAL UNCOMPRESSED SEAL WIDTH OF THE EVAZOTE JOINT SEAL SHALL BE 3/8" AT BENT #3. FOR EVAZOTE JOINT SEALS, SEE SPECIAL PROVISIONS.
- FOR ELASTOMERIC CONCRETE, SEE SPECIAL PROVISIONS.
- LATEX MODIFIED CONCRETE SHALL BE LATEX MODIFIED CONCRETE-VERY EARLY STRENGTH.
- FOR LATEX MODIFIED CONCRETE-VERY EARLY STRENGTH, SEE SPECIAL PROVISIONS.



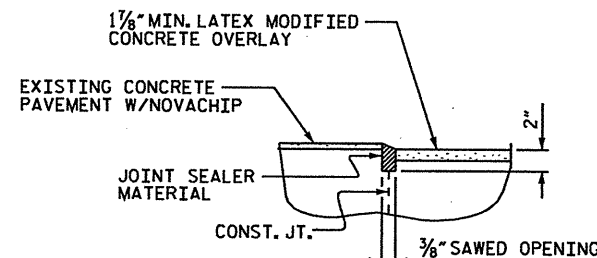
DETAIL FOR LATEX MODIFIED CONCRETE OVERLAY



SECTION A-A



DETAIL "A"
(LOCATION OF JOINT TO MATCH EXISTING JOINT LOCATION.)



DETAIL "B"
(LOCATION OF JOINT TO MATCH EXISTING JOINT LOCATION.)

TOTAL BILL OF MATERIAL

DECK SCARIFICATION	CLASS I* SURFACE PREPARATION	CLASS II* SURFACE PREPARATION	CLASS III** SURFACE PREPARATION	HYDRO-DEMOLITION	CLASS AA* CONCRETE	LATEX MODIFIED CONCRETE	EVAZOTE JOINT SEAL	GROOVING BRIDGE FLOORS	PAVEMENT MARKINGS (POLYUREA)
SO. YDS.	SO. YDS.	SO. YDS.	SO. YDS.	SO. YDS.	CU. YDS.	CU. YDS.	LUMP SUM	SO. FT.	LIN. FEET
2005	1906	99	0	2005	0	200	LUMP SUM	16880	940

* QUANTITIES ARE SHOWN FOR INFORMATIONAL PURPOSES ONLY.

** NO LOCATIONS ARE ANTICIPATED. IF ANY LOCATIONS ARE ENCOUNTERED PRIOR TO OR DURING HYDRO-DEMOLITION, SEE "TYP. "BLOW THRU" CONTAINMENT AND FORMWORK" DETAIL.

DRAWN BY: R.W. WRIGHT DATE: 03-09
CHECKED BY: M.A. ALLEN DATE: 03-09

PROJECT NO. B-5179A
BUNCOMBE COUNTY
STATION: 327+26.20 -L-

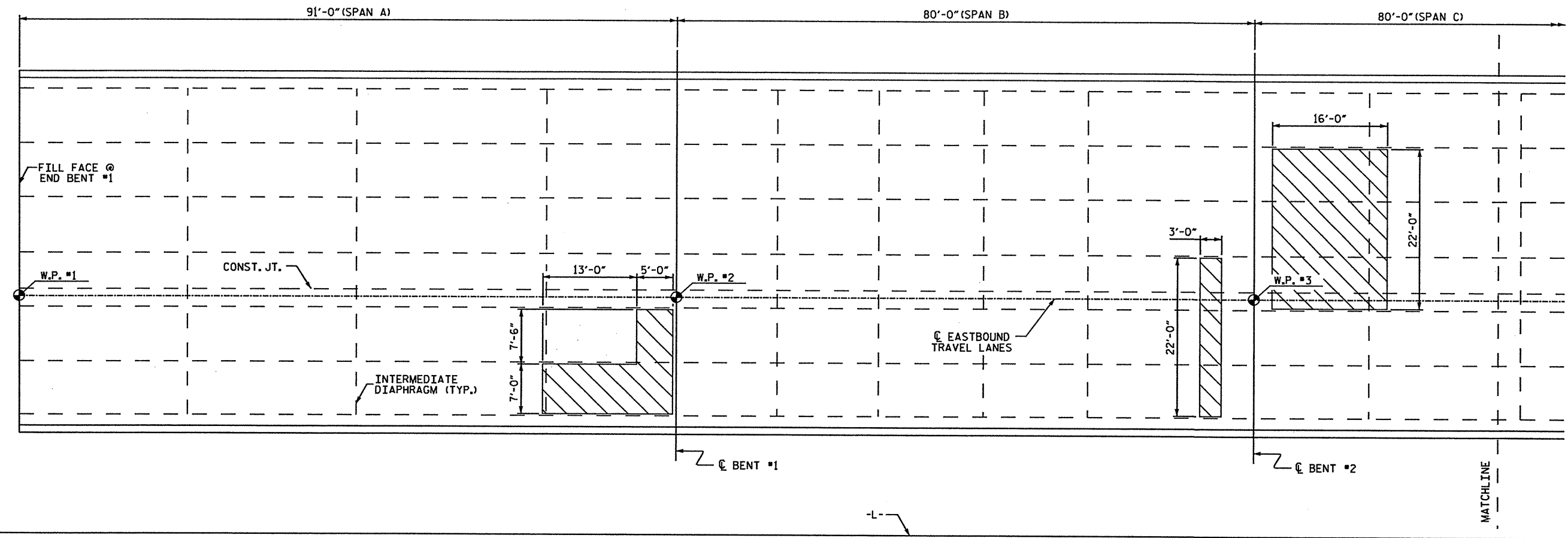
SHEET 1 OF 3

STATE OF NORTH CAROLINA
DEPARTMENT OF TRANSPORTATION
RALEIGH

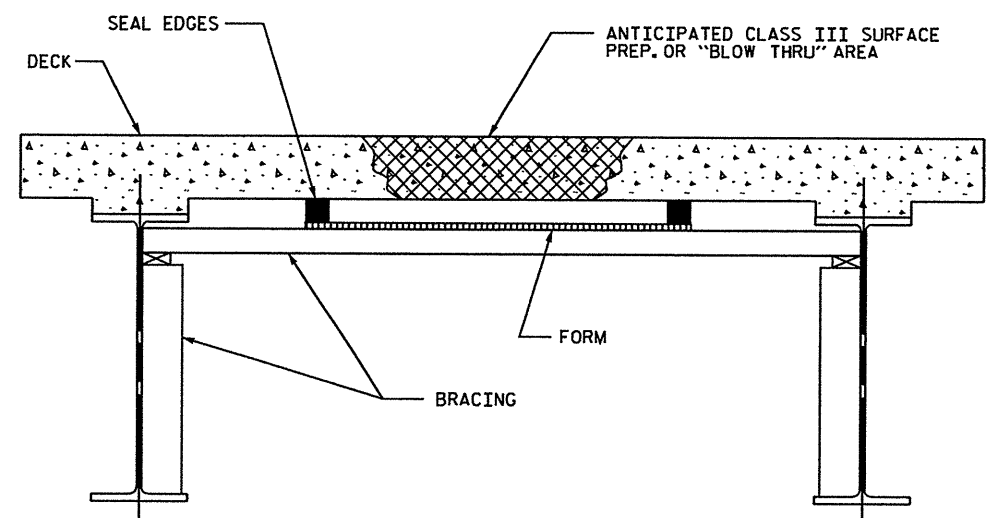
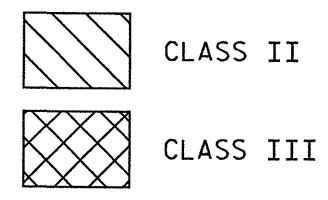
PLAN OF SPANS
FOR DECK REPAIR

DECK REHAB. FOR BRIDGE NO. 330

REVISIONS						SHEET NO.
NO.	BY	DATE	NO.	BY	DATE	5-16
1			3			TOTAL SHEETS 18
2			4			



PLAN OF SPANS - DECK REPAIRS



TYP. "BLOW THRU" CONTAINMENT AND FORMWORK

A METHOD TO CAPTURE WATER AND DEBRIS FROM BLOW THRU DURING HYDRO-DEMOLITION SHALL BE INSTALLED IN AREAS INDICATED AS CLASS III SURFACE PREPARATION.

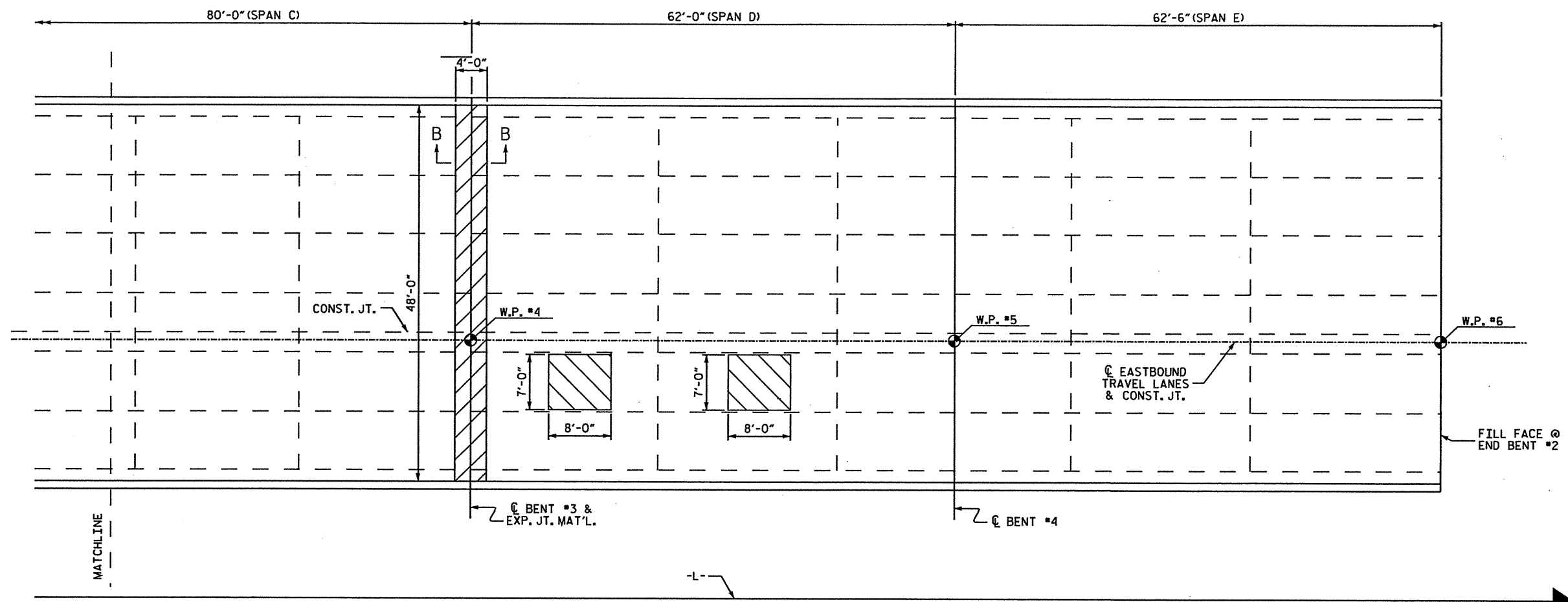
SUBMIT DETAILS OF PROPOSED FORMWORK FOR APPROVAL PRIOR TO BEGINNING WORK.

COSTS FOR INSTALLING AND REMOVING FORMWORK SHALL BE INCIDENTAL TO THE PRICE PER SQ. YARD OF HYDRO-DEMOLITION.

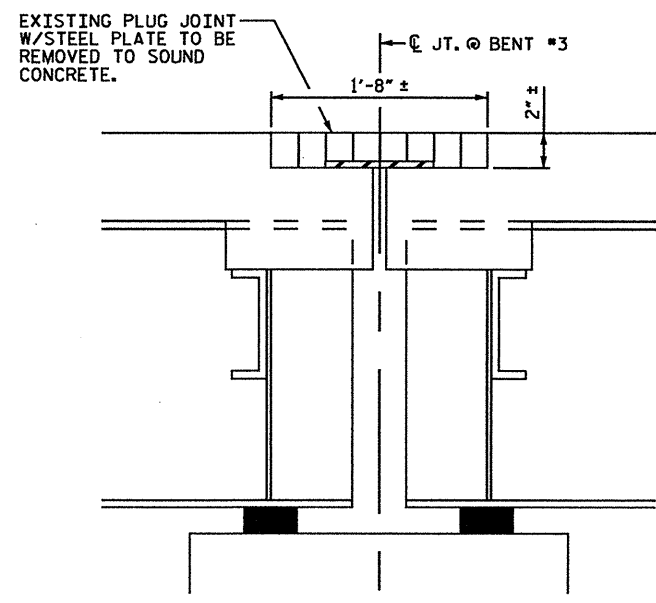
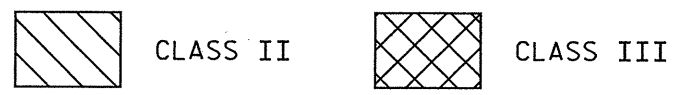
PROJECT NO. B-5179A
BUNCOMBE COUNTY
 STATION: 327+26.20 -L-
 SHEET 2 OF 3

STATE OF NORTH CAROLINA DEPARTMENT OF TRANSPORTATION RALEIGH						SHEET NO. S-17
PLAN OF SPANS FOR DECK REPAIR						TOTAL SHEETS 18
DECK REHAB. FOR BRIDGE NO. 330						
REVISIONS						
NO.	BY	DATE	NO.	BY	DATE	
1			3			
2			4			

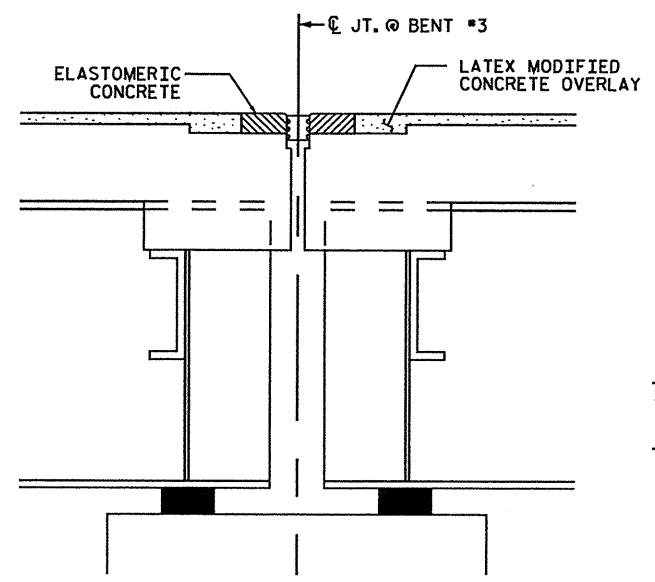
DRAWN BY : R.W. WRIGHT DATE : 03-09
 CHECKED BY : M.A. ALLEN DATE : 03-09



PLAN OF SPANS - DECK REPAIRS



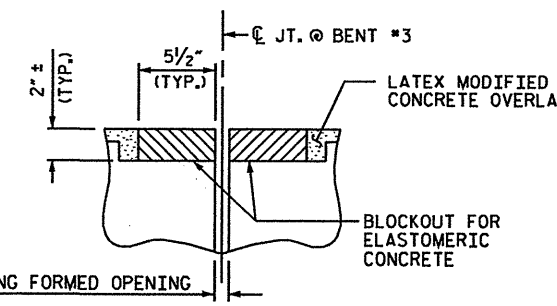
SECTION B-B
(EXISTING JOINT)



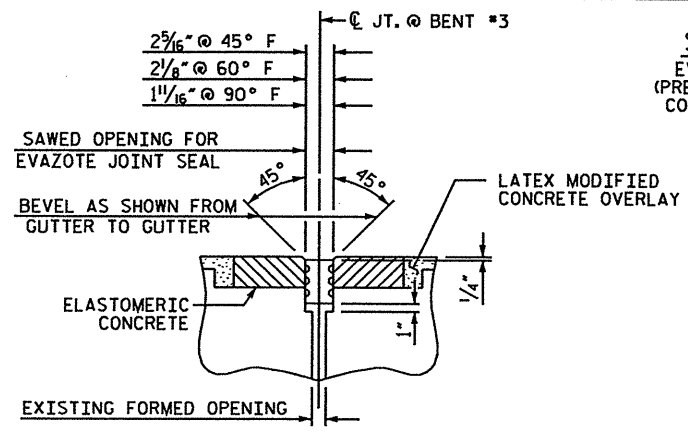
SECTION B-B
(PROPOSED JOINT REPLACEMENT DETAIL)

ELASTOMERIC CONCRETE	
BENT NO.	ELASTOMERIC CONCRETE * (CU. FT.)
3	7.3
TOTAL	7.3

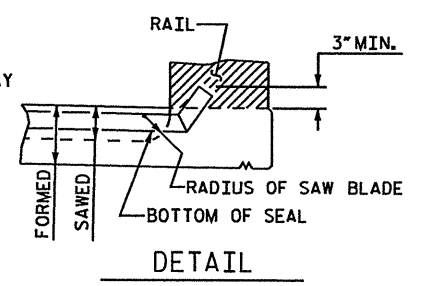
* BASED ON THE MINIMUM BLOCKOUT SHOWN.



SECTION B-B
EVAZOTE JOINT SEAL
(PRE-SAWED ELASTOMERIC CONCRETE DIMENSIONS)



SECTION B-B
EVAZOTE JOINT SEAL
(EXPANSION)



DETAIL

PROJECT NO. B-5179A
BUNCOMBE COUNTY
STATION: 327+26.20 -L-

SHEET 3 OF 3

STATE OF NORTH CAROLINA
DEPARTMENT OF TRANSPORTATION
RALEIGH
PLAN OF SPANS
FOR DECK REPAIR
DECK REHAB. FOR BRIDGE NO. 330

DRAWN BY: R.W. WRIGHT DATE: 03-09
CHECKED BY: M.A. ALLEN DATE: 03-09

REVISIONS				SHEET NO.	
NO.	BY	DATE	NO.	DATE	5-18
1			3		TOTAL SHEETS 18
2			4		