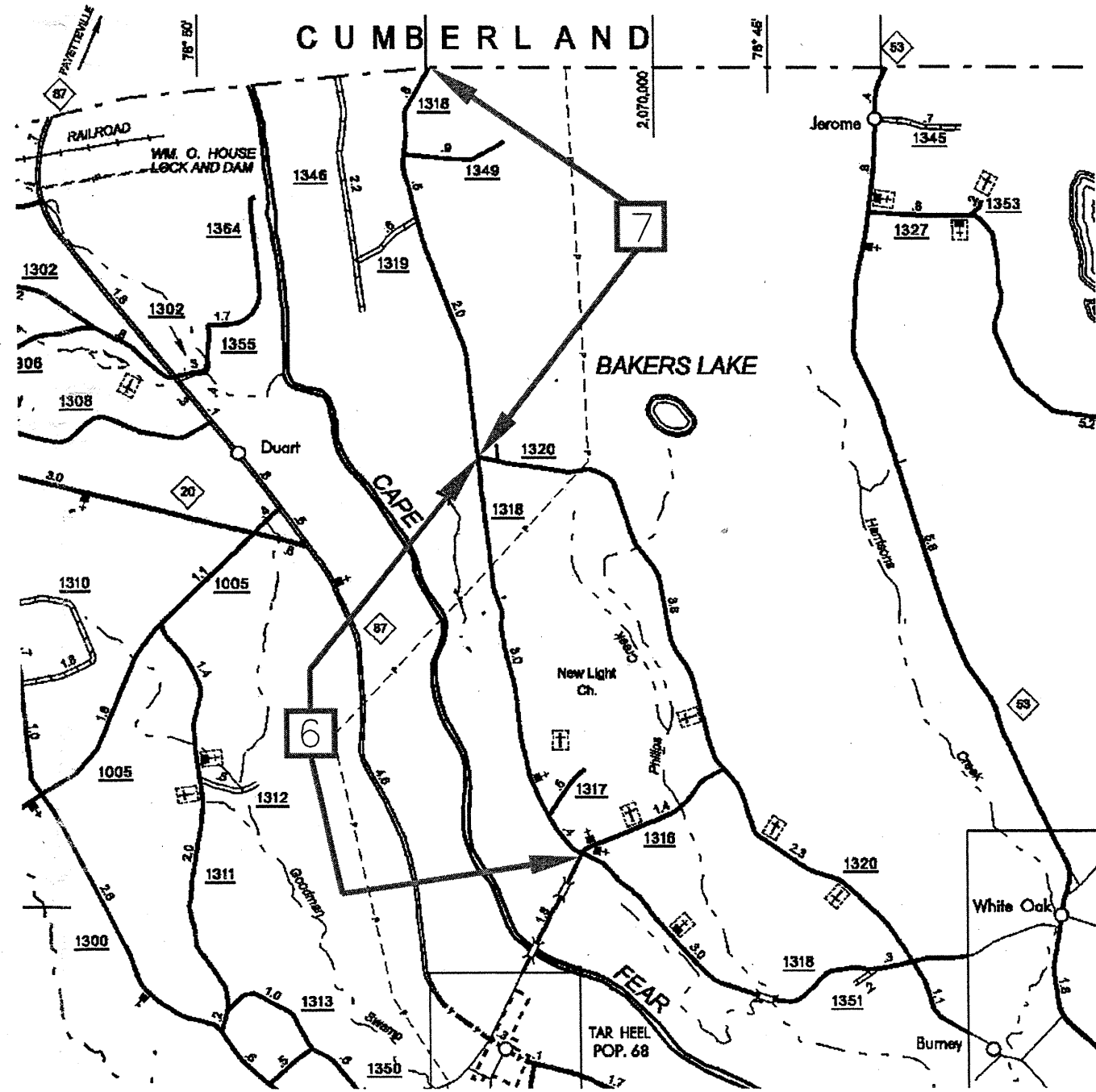
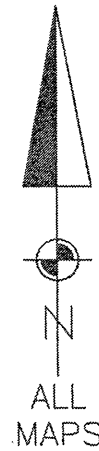
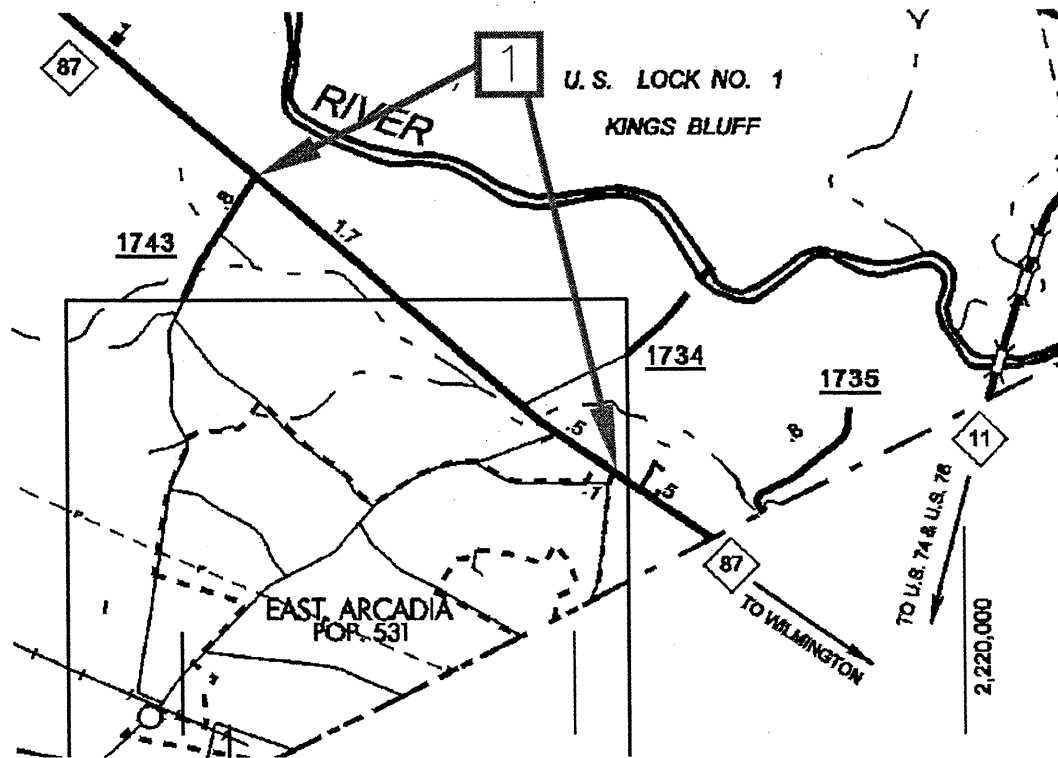
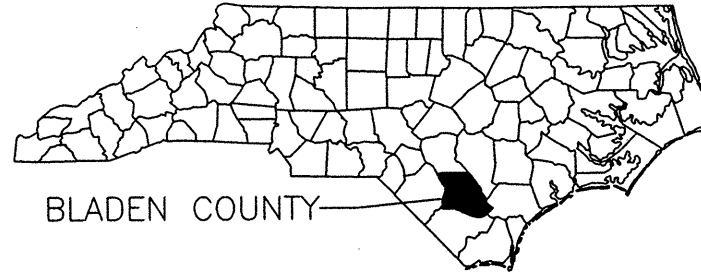


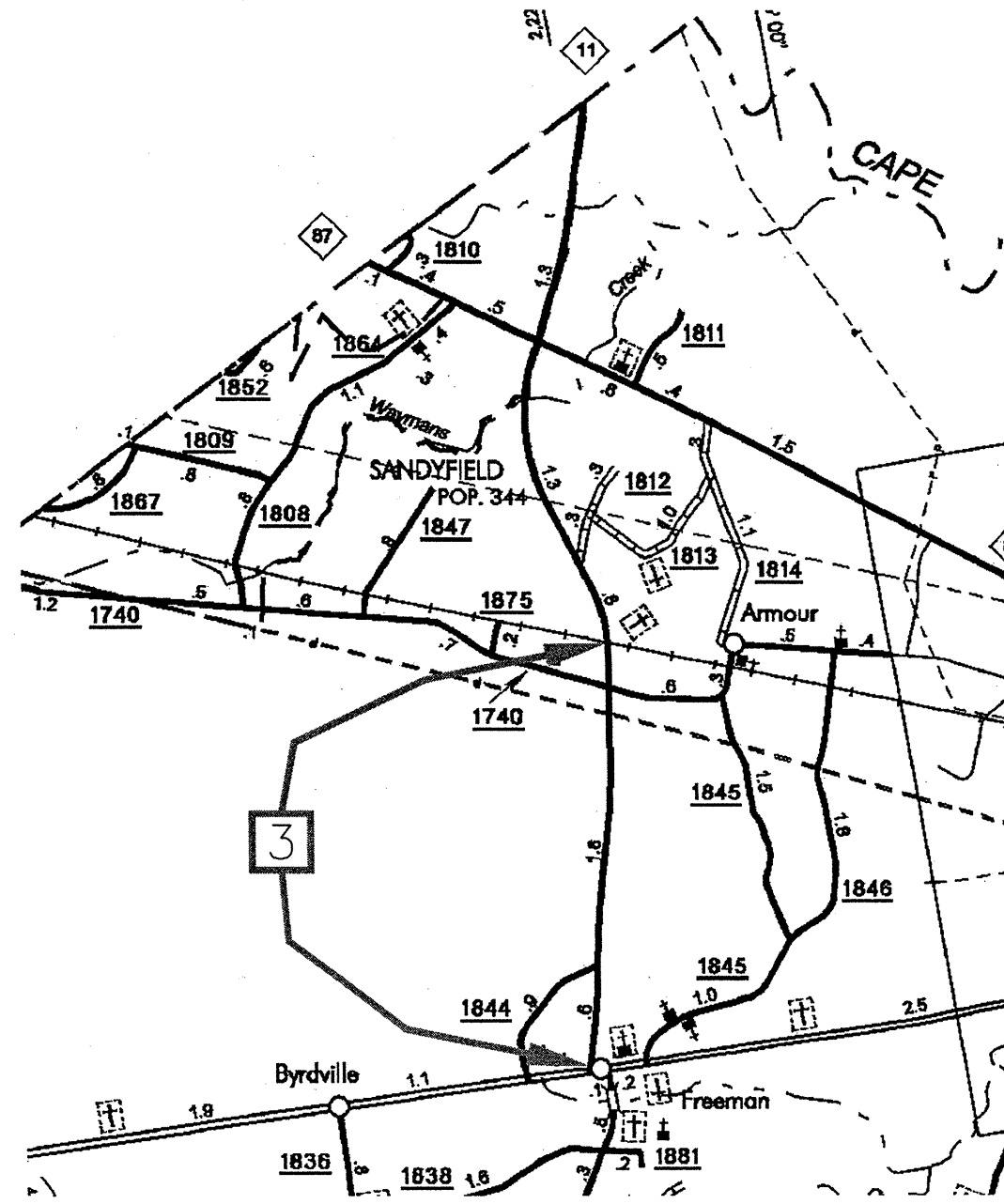
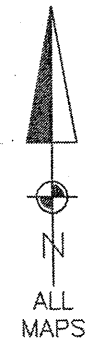
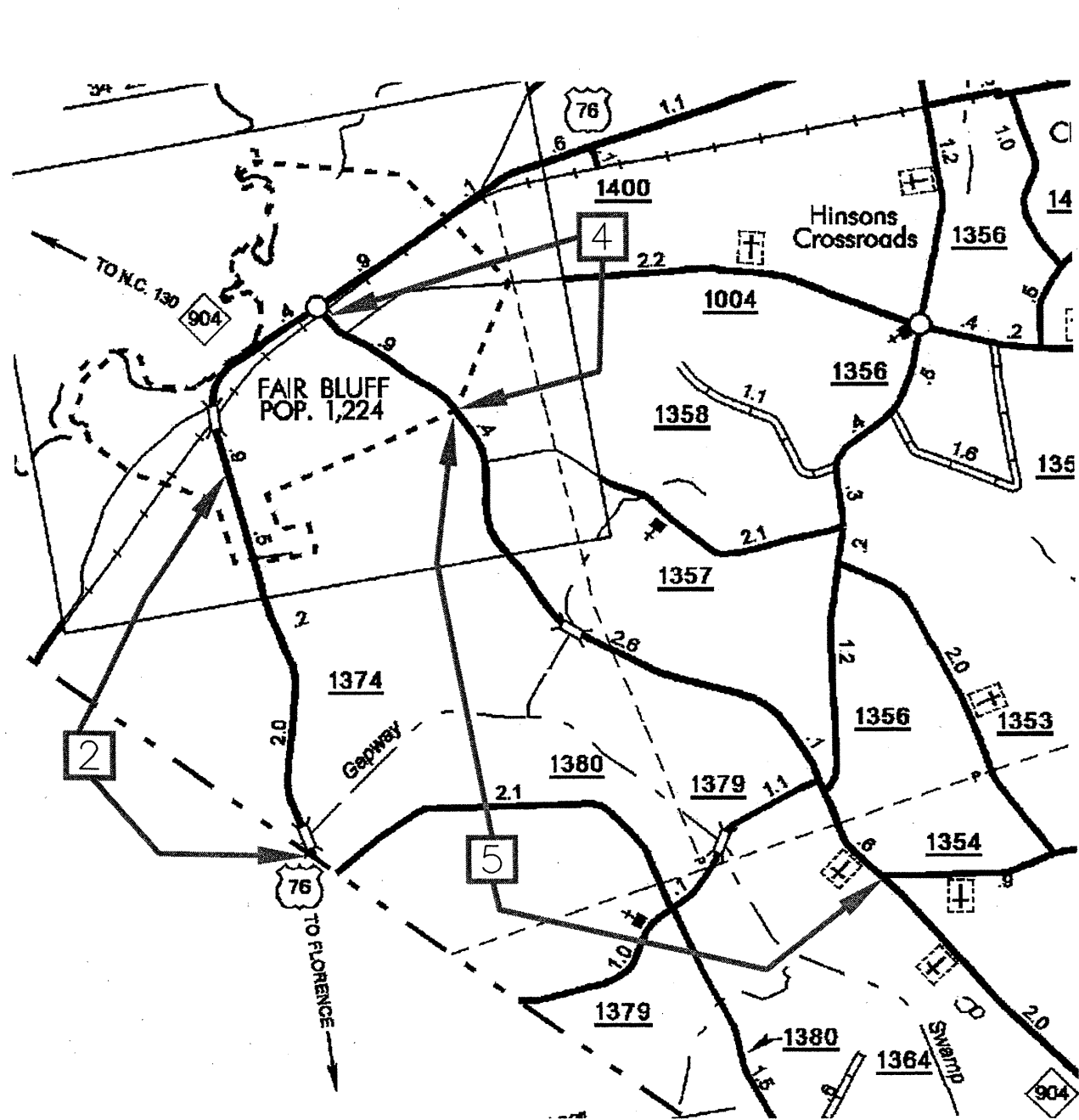
# RESURFACING MAPS — BLADEN COUNTY

REVISED: 6-10-09



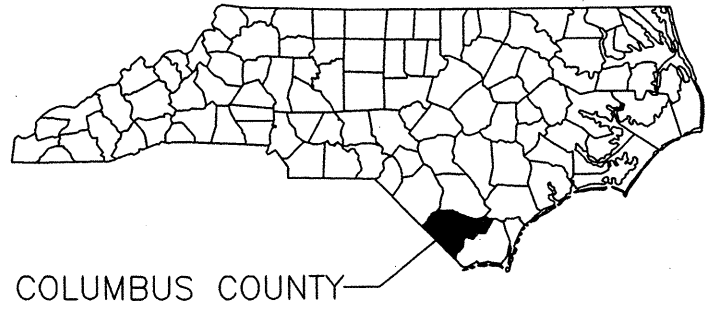
# RESURFACING MAPS – COLUMBUS COUNTY

REVISED: 6-10-09

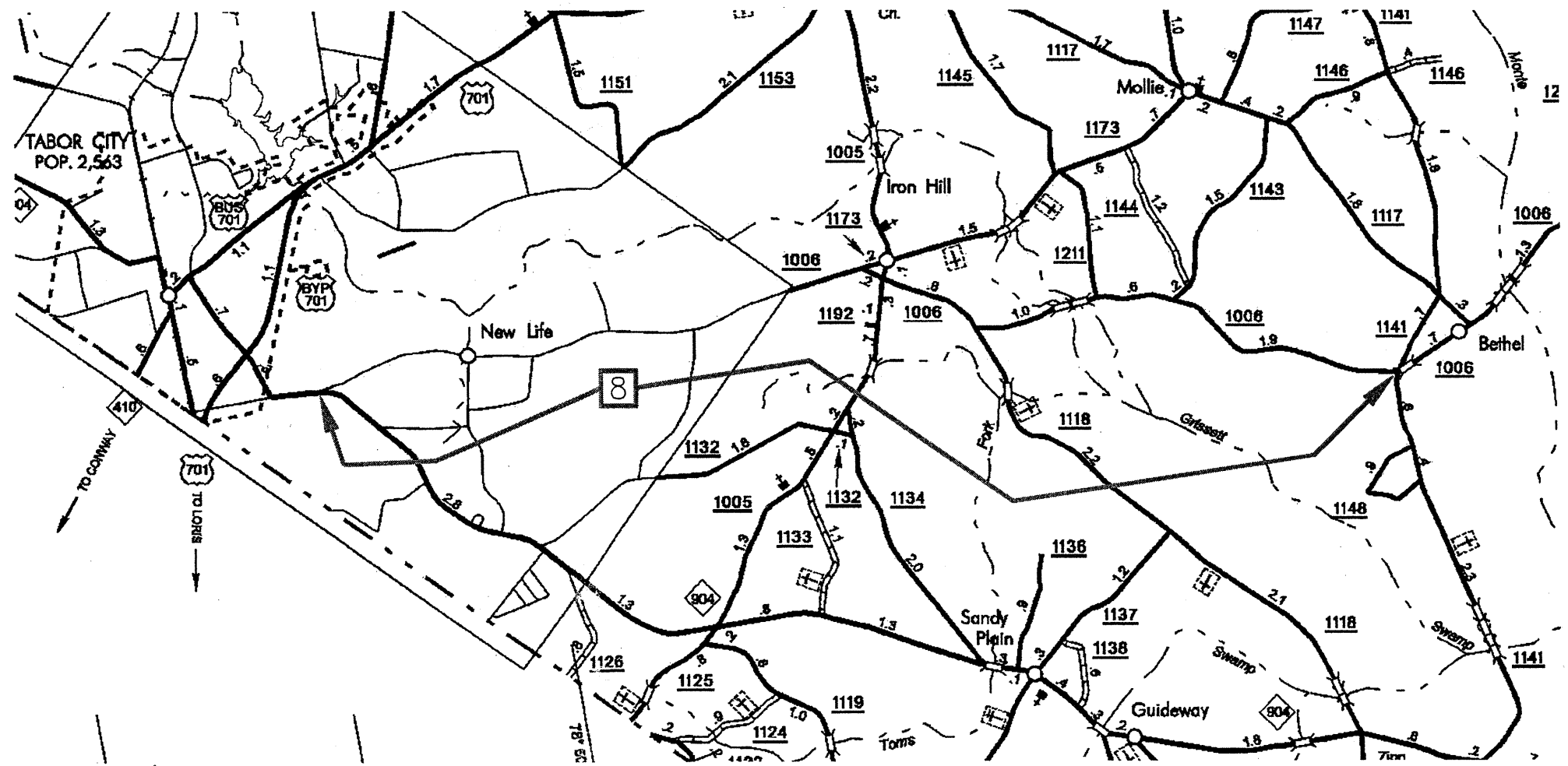


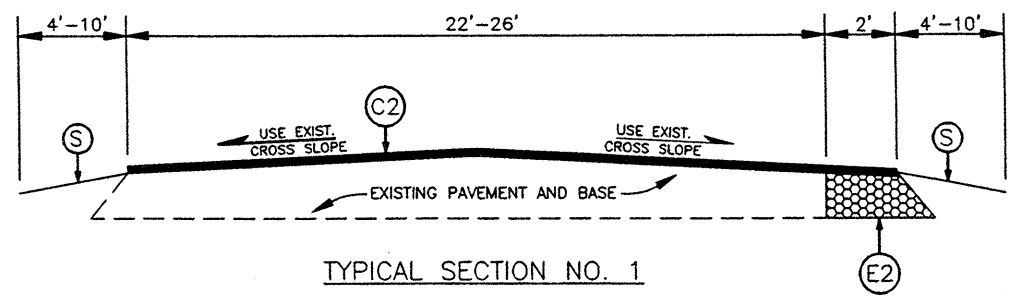
# RESURFACING MAPS - COLUMBUS COUNTY

REVISED: 6-10-09

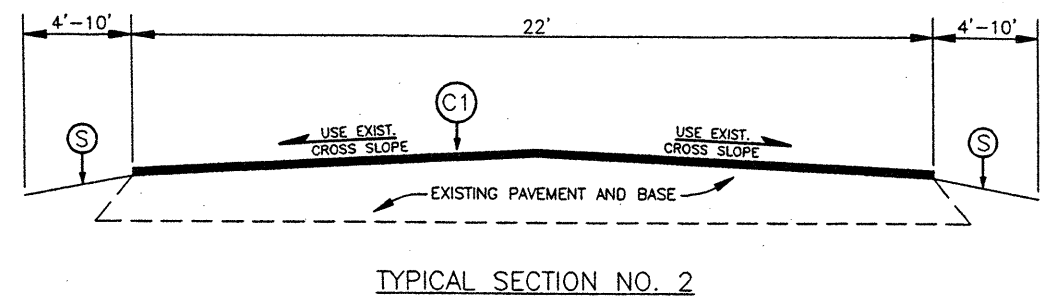


COLUMBUS COUNTY

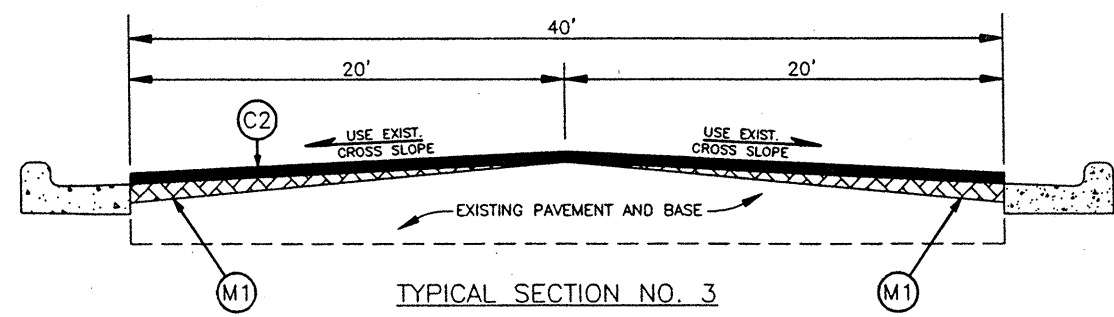




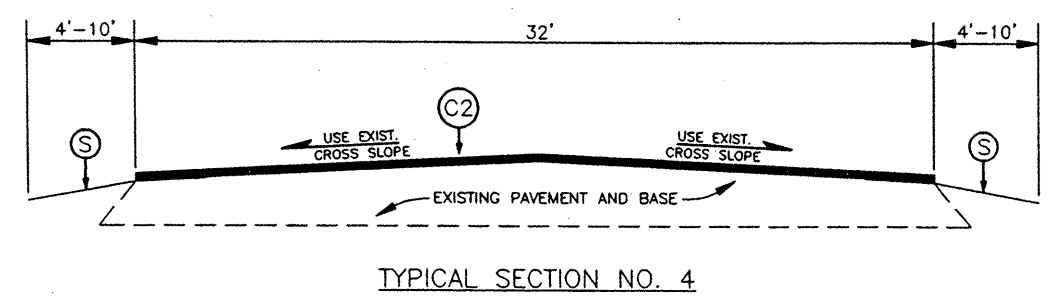
TYPICAL SECTION NO. 1  
 NOTE: INCLUDES 2' WIDENING ON THE INSIDE RADIUS OF ALL CURVES, OR AS DIRECTED BY THE ENGINEER. SEE DETAIL 1.



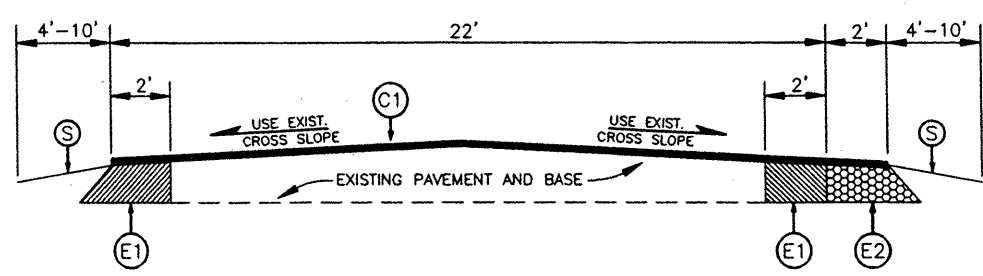
TYPICAL SECTION NO. 2



TYPICAL SECTION NO. 3

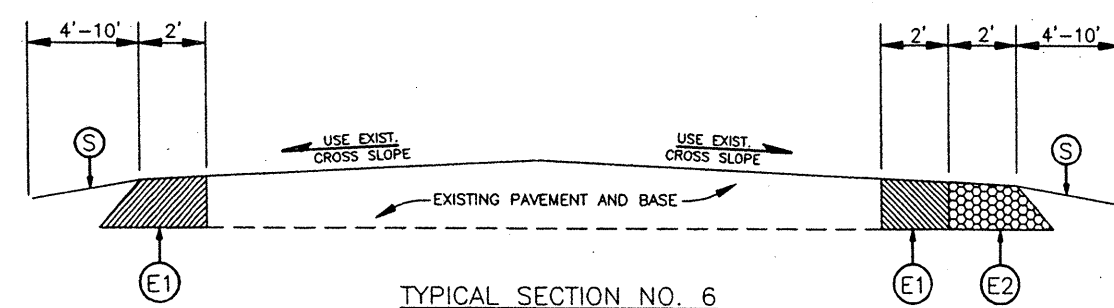


TYPICAL SECTION NO. 4



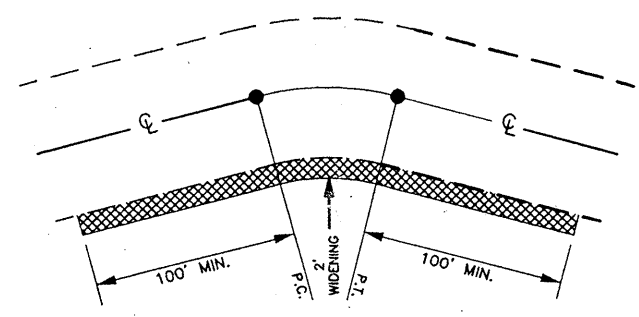
TYPICAL SECTION NO. 5

NOTE: EXISTING DITCHES WILL NOT BE RELOCATED, UNLESS DIRECTED BY ENGINEER. INCLUDES ADDITIONAL 2' WIDENING ON THE INSIDE RADIUS OF ALL CURVES, OR AS DIRECTED BY THE ENGINEER. SEE DETAIL 1.

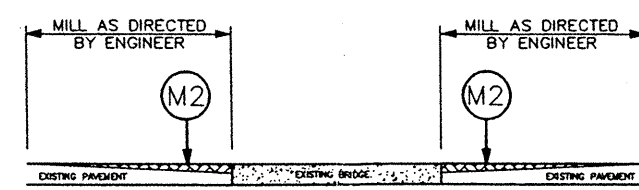


TYPICAL SECTION NO. 6

NOTE: EXISTING DITCHES WILL NOT BE RELOCATED, UNLESS DIRECTED BY ENGINEER. INCLUDES ADDITIONAL 2' WIDENING ON THE INSIDE RADIUS OF ALL CURVES, OR AS DIRECTED BY THE ENGINEER. SEE DETAIL 1.



DETAIL 1  
 INSIDE CURVE WIDENING



DETAIL 2  
 MILLING APPROACHES

NOTE: MILLING SHALL BE PERFORMED AT BRIDGES AND RAILROAD APPROACHES AS DIRECTED BY THE ENGINEER IN ACCORDANCE WITH DETAIL 2.

PAVEMENT SCHEDULE	
E1	Proposed approximately 5½" of Asphalt Concrete Base Course, Type B-25.0-B, at an average rate of 627 pounds per square yard for standard 2' widening.
E2	Proposed approximately 5 1/2" of Asphalt Concrete Base Course, Type B-25.0-B, at an average rate of 627 pounds per square yard for 2' widening at inside curve radii, as Directed by the Engineer.
C1	Proposed approximately 1½" of Asphalt Concrete Surface Course, Type SF-9.5-A, at an average rate of 165 pounds per square yard.
C2	Proposed approximately 1½" of Asphalt Concrete Surface Course, Type S-9.5-B, at an average rate of 168 pounds per square yard.
M1	Milling Depth 0" - 3" from the centerline of roadway to the edge of Curb & Gutter. Milling shall extend below the lip of the Gutter Pan by the thickness of the Proposed Overlay, or as Directed by the Engineer.
M2	Milling Depth 0" - 1½" at all Bridge and Railroad Approaches, for the entire width of the roadway, or as Directed by the Engineer.
S	Shoulder Reconstruction as directed by the Engineer.

DRAWINGS NOT TO SCALE

YEAR LET - 2009 (REVISED: 6-10-09)							
COLUMBUS		TYPICAL NO. 1	TYPICAL NO. 2	TYPICAL NO. 3	TYPICAL NO. 4	TYPICAL NO. 5	TYPICAL NO. 6
	PRIMARY		US 76, NC 11 & NC 904-B		NC 904-A		
SECONDARY			SR 1006				
BLADEN		TYPICAL NO. 1	TYPICAL NO. 2	TYPICAL NO. 3	TYPICAL NO. 4	TYPICAL NO. 5	TYPICAL NO. 6
	PRIMARY				NC 87		
SECONDARY						SR 1318-A	SR 1318-B

PROJECT NO.	SHEET NO.	TOTAL NO.
6CR.10091.36, 6CR.10241.36 6CR.20091.36, ETC.	5	6

## SUMMARY OF QUANTITIES

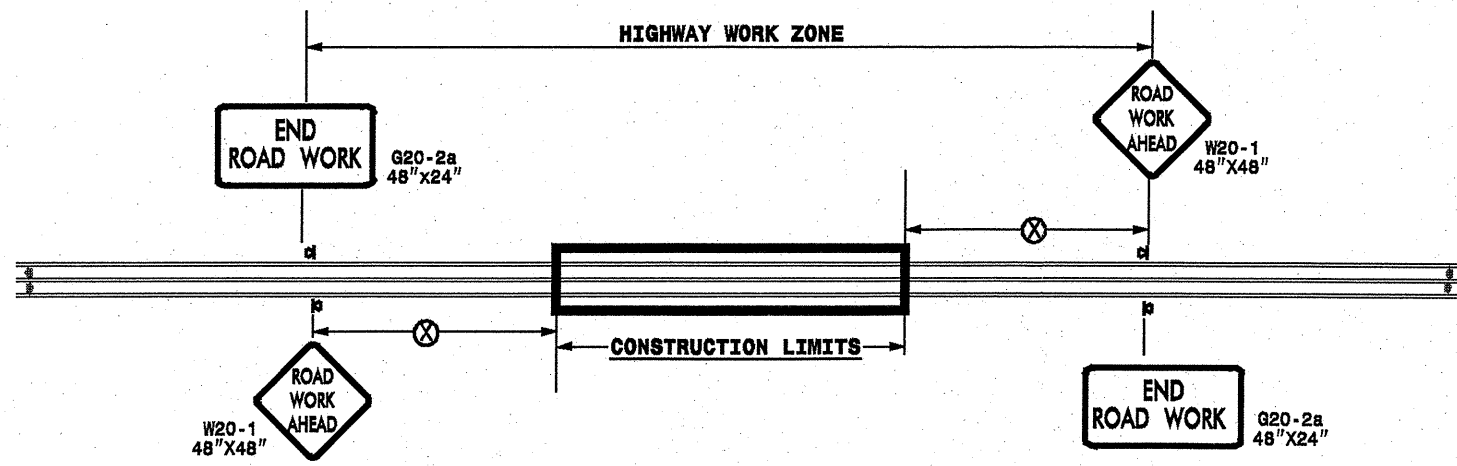
PROJECT NO	COUNTY	MAP NO	ROUTE	DESCRIPTION	TYP NO	FINAL SURFACE TESTING REQUIRED	LENGTH MI	WIDTH FT	INCIDENTAL STONE BASE TONS	SHOULDER RECONSTRUCTION SMI	0" TO 1.5" MILLING SY	0" TO 3" MILLING SY	BASE COURSE, B25.0B TONS	SURFACE COURSE, S9.5B TONS	SURFACE COURSE, SF9.5A TONS	PG 64-22 PLANT MIX TONS	PATCHING EXISTING PAVEMENT TONS	MANHOLES EA	METER OR VALVE BOX EA	SEED & MULCHING AC
6CR.10091.36	Bladen	1	NC 87	FROM WCL OF EAST ARCADIA TO SR 1743	4	NO	2.16	32	52	4.32				3,431		206	65			5.24
<b>TOTAL FOR MAP NO. 1</b>							2.16		52	4.32				3,431		206	65			5.24
<b>TOTAL FOR PROJ NO. 6CR.10091.36</b>							2.16		52	4.32				3,431		206	65			5.24
6CR.10241.36	Columbus	2	US 76	FROM THE SOUTH CAROLINA STATE LINE TO THE CONSTRUCTION JOINT @ BRIDGE #15	1	NO	2.45	22	59	4.9	516		92	2,731		168	74			5.94
<b>TOTAL FOR MAP NO. 2</b>							2.45		59	4.9	516		92	2,731		168	74			5.94
		3	NC 11	FROM US 74 TO RR TRACKS	1	NO	2.5	26	60	5			92	3,303		202	75			6.06
<b>TOTAL FOR MAP NO. 3</b>							2.5		60	5	0		92	3,303		202	75			6.06
		4	NC 904-A	FROM RAILROAD STREET TO ECL FAIRBLUFF	3	NO	0.82	40				19243		1,730		104	25	8	8	
<b>TOTAL FOR MAP NO. 4</b>							0.82		0	0	0	19243	0	1,730		104	25	8	8	
		5	NC 904-B	FROM ECL FAIR BLUFF TO SR 1354	1	NO	3.56	22	85	7.12	516		132	3,945		242	107			8.63
<b>TOTAL FOR MAP NO. 5</b>							3.56		85	7.12	516	0	132	3,945		242	107			8.63
<b>TOTAL FOR PROJ NO. 6CR.10241.36</b>							9.33		204	17.02	1032	19243	316	11,709		716	281	8	8	20.63
6CR.20091.36	Bladen	6	SR 1318-A	FROM SR 1316 TO SR 1320	5	NO	3.49	22	84	6.98			2697		3,775	361	105			8.46
<b>TOTAL FOR MAP NO. 6</b>							3.49		84	6.98	0	0	2697		3,775	361	105			8.46
		7	SR 1318-B	FROM SR 1320 TO CUMBERLAND COUNTY LINE	6	NO	3.36	22	81	6.72			2597			112	101			8.15
<b>TOTAL FOR MAP NO. 7</b>							3.36		81	6.72	0	0	2597			112	101			8.15
<b>TOTAL FOR PROJ NO. 6CR.20091.36</b>							6.85		165	13.7	0	0	5294		3,775	473	206			16.61
6CR.20241.36	Columbus	8	SR 1006	FROM SR 1141 TO NC 904	2	NO	8.74	22	210	17.48	1033				9,418	612	262			21.19
<b>TOTAL FOR MAP NO. 8</b>							8.74		210	17.48	1033	0	0		9,418	612	262			21.19
<b>TOTAL FOR PROJ NO. 6CR.20241.36</b>							8.74		210	17.48	1033	0	0		9,418	612	262			21.19
<b>GRAND TOTAL</b>							27.08		631	52.52	2065	19243	5610	15,140	13,193	2,007	814	8	8	63.67

PROJECT NO.	SHEET NO.	TOTAL NO.
6CR.10091.36, 6CR.10241.36 6CR.20091.36, ETC.	6	6

## THERMOPLASTIC AND PAINT QUANTITIES

PROJECT NO	COUNTY	MAP NO	ROUTE	DESCRIPTION	4685000000-E	4686000000-E		4705000000-E	4710000000-E	4721000000-E	4810000000-E		4830000000-E	4835000000-E	4840000000-N	4900000000-N	4900000000-N
					4" X 90 M WHITE THERMO LF	4" X 120 M YELLOW THERMO LF	4" X 120 M WHITE THERMO LF	16" X 120 M WHITE THERMO LF	24" X 120 M WHITE THERMO LF	THERMO RXR 120 M  EA	4" WHITE PAINT  LF	4" YELLOW PAINT  LF	16" WHITE PAINT  LF	24" WHITE PAINT  LF	PAINT MSG RXR  EA	YELLOW & YELLOW MARKERS EA	CYAN & RED MARKERS EA
6CR.10091.36	Bladen	1	NC 87	FROM WCL OF EAST ARCADIA TO SR 1743	22,320	10,140										148	
TOTAL FOR MAP NO. 1					22,320	10,140										148	
TOTAL FOR PROJ NO. 6CR.10091.36					22,320	10,140										148	
					10,140												
6CR.10241.36	Columbus	2	US 76	FROM THE SOUTH CAROLINA STATE LINE TO THE CONSTRUCTION JOINT @ BRIDGE #15	26,000	21,000		50	65	2	26,000	21,000	50	65	2	129	
TOTAL FOR MAP NO. 2					26,000	21,000		50	65	2	26,000	21,000	50	65	2	129	
		3	NC 11	FROM US 74 TO RR TRACKS	26,500	21,200		50	65	2						180	
TOTAL FOR MAP NO. 3					26,500	21,200		50	65	2						180	
		4	NC 904-A	FROM RAILROAD STREET TO ECL FAIRBLUFF		9,080	4,220	100	70	4	4,220	9,080	100	70	4	55	95
TOTAL FOR MAP NO. 4						9,080	4,220	100	70	4	4,220	9,080	100	70	4	55	95
		5	NC 904-B	FROM ECL FAIR BLUFF TO SR 1354	37,593	18,500					37,593	18,500				234	
TOTAL FOR MAP NO. 5					37,593	18,500					37,593	18,500				234	
TOTAL FOR PROJ NO. 6CR.10241.36					90,093	69,780	4,220	200	200	8	67,813	48,580	150	135	6	598	95
					74,000						116,393						
6CR.20091.36	Bladen	6	SR 1318-A	FROM SR 1316 TO SR 1320							73,000	60,000					
TOTAL FOR MAP NO. 6											73,000	60,000					
		7	SR 1318-B	FROM SR 1320 TO CUMBERLAND COUNTY LINE							70,000	56,000					
TOTAL FOR MAP NO. 7											70,000	56,000					
TOTAL FOR PROJ NO. 6CR.20091.36											143,000	116,000					
											259,000						
6CR.20241.36	Columbus	8	SR 1006	FROM SR 1141 TO NC 904	92,500	74,000										600	
TOTAL FOR MAP NO. 8					92,500	74,000										600	
TOTAL FOR PROJ NO. 6CR.20241.36					92,500	74,000										600	
					74,000												
<b>GRAND TOTAL</b>					<b>204,913</b>	<b>153,920</b>	<b>4,220</b>	<b>200</b>	<b>200</b>	<b>8</b>	<b>210,813</b>	<b>164,580</b>	<b>150</b>	<b>135</b>	<b>6</b>	<b>1,346</b>	<b>95</b>
					158,140						375,393					1,441	

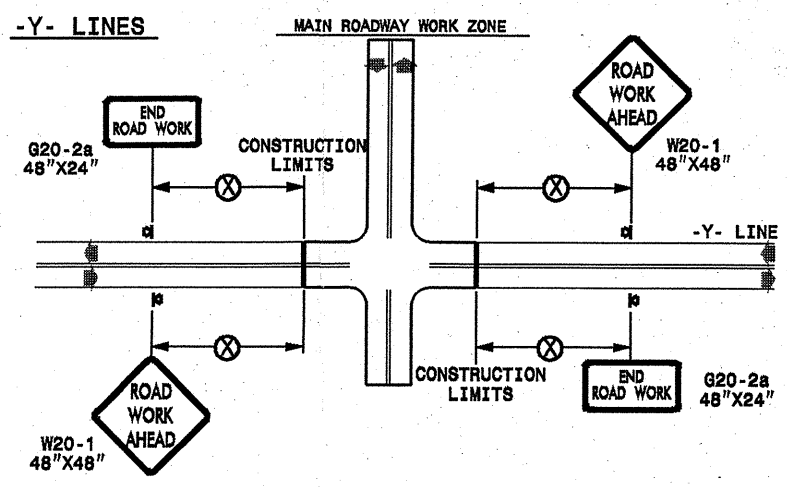
**TWO-WAY UNDIVIDED \*\* (L-LINES)**



POSTED SPEED LIMIT (M.P.H.)	RECOMMENDED MINIMUM SIGN SPACING
≤ 50	500'
≥ 55	1000'

STATE OF NORTH CAROLINA  
DEPT. OF TRANSPORTATION  
DIVISION OF HIGHWAYS  
RALEIGH, N.C.

**ROADWAYS INTERSECTING ALONG 2 WAY UNDIVIDED WORK ZONE (Y-LINES)**



**GENERAL NOTES**

- USE FLUORESCENT ORANGE SHEETING (TYPE VII OR HIGHER) ON ALL ADVANCE WORK ZONE SIGNS.
- DO NOT INSTALL ADVANCE WARNING SIGNS MORE THAN 3 DAYS PRIOR TO BEGINNING OF WORK.
- ALL SIGN SPACING DIMENSIONS ARE APPROXIMATE, FIELD ADJUST AS NECESSARY OR AS DIRECTED.
- USE PORTABLE WORK ZONE SIGNS ONLY WITH PORTABLE WORK ZONE SIGN STANDS SPECIFICALLY DESIGNED FOR ONE ANOTHER. PORTABLE WORK ZONE SIGNS MAY BE ROLL UP OR APPROVED COMPOSITE.
- PROVIDE PORTABLE WORK ZONE SIGN STANDS, PORTABLE SIGNS AND SIGN SHEETING WHICH ARE LISTED ON THE NORTH CAROLINA DEPARTMENT OF TRANSPORTATION'S APPROVED PRODUCT LIST OR ACCEPTED AS TRAFFIC QUALIFIED BY THE TRAFFIC CONTROL UNIT.
- \*\* TWO-WAY UNDIVIDED ADVANCE WARNING SIGN CONFIGURATION MAY BE USED ON URBAN MULTI-LANE FACILITIES WHERE CONDITIONS LIMIT THE USE OF DUAL MOUNTED SIGNS AS DETERMINED BY THE ENGINEER.

**LEGEND**

◀ PORTABLE SIGN

➔ DIRECTION OF TRAFFIC FLOW

DETAIL DRAWING  
FOR TWO-WAY UNDIVIDED  
WORK ZONE WARNING SIGNS

SHEET 1 OF 1

APPROVED: _____	DATE: _____	DETAIL DRAWING FOR TWO-WAY UNDIVIDED ADVANCED WORK ZONE WARNING SIGNS	SCALE: NONE DATE: _____ DWG. BY: _____ DESIGN BY: _____ REVIEWED BY: _____		REVISIONS 7-98 10/01 10-98 03/04 01/01 11/04
SEAL					CADD FILE

06-JUL-2009 17:48  
 sa\sl\m\resurfacing\_030509\resurfacing\_030509.dwg  
 pseymer AT WZTC237502