

16-APR-2009 15:28
c:\my documents\project manager\economic stimulus projects\wilkes\nc16wilkes\nc-5153-ddc-tsh-040809.dgn
flows AT DICAD-23022

09/08/99

TIP PROJECT: R-5153
CONTRACT: C202361

STATE OF NORTH CAROLINA
DIVISION OF HIGHWAYS

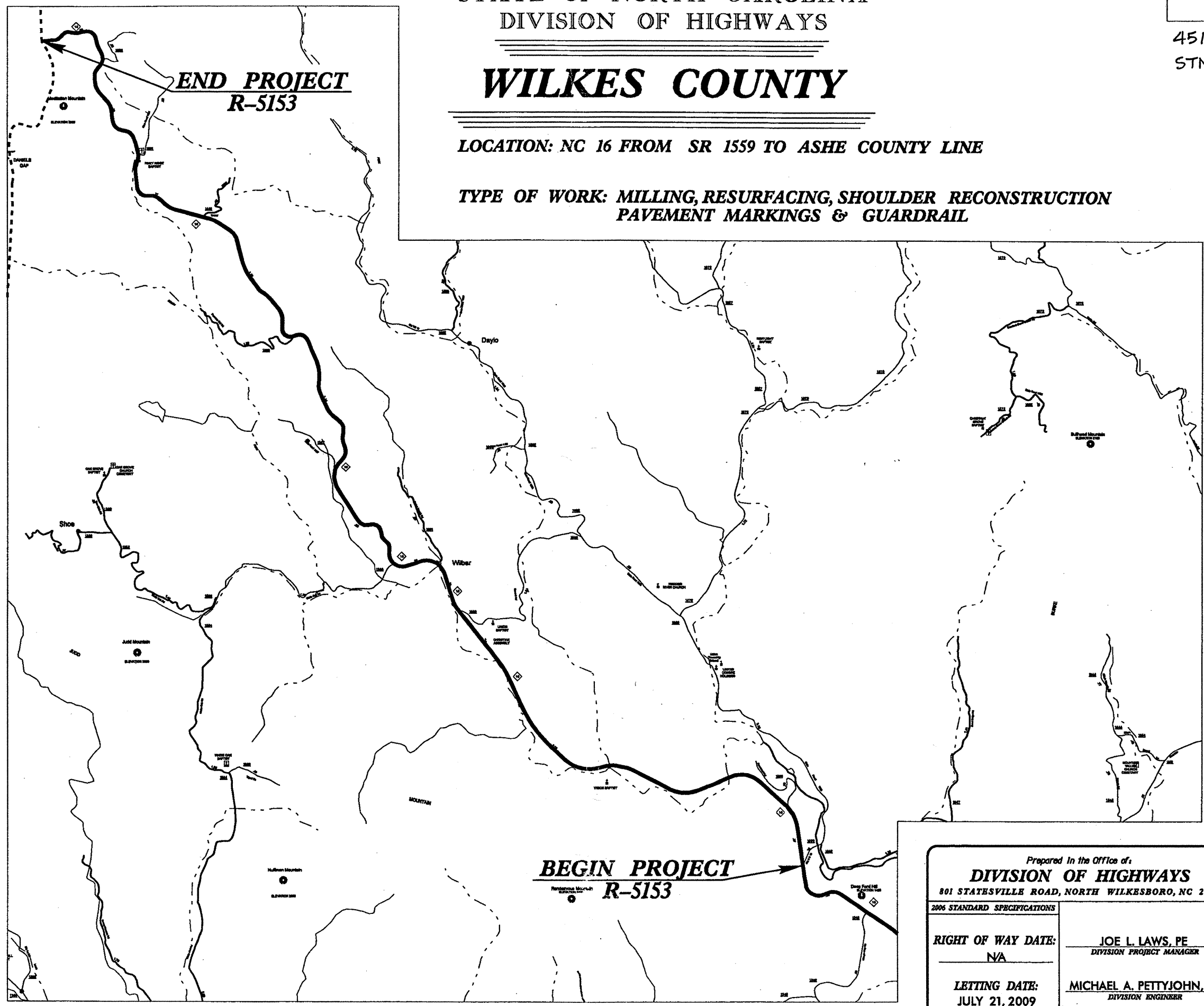
WILKES COUNTY

LOCATION: NC 16 FROM SR 1559 TO ASHE COUNTY LINE

TYPE OF WORK: MILLING, RESURFACING, SHOULDER RECONSTRUCTION
PAVEMENT MARKINGS & GUARDRAIL

STATE PROJECT REFERENCE NO.	SHEET NO.	TOTAL SHEETS
R-5153	1	

45100.3. ST1
STM-0016(47)



Prepared in the Office of:
DIVISION OF HIGHWAYS
801 STATESVILLE ROAD, NORTH WILKESBORO, NC 28659

2006 STANDARD SPECIFICATIONS

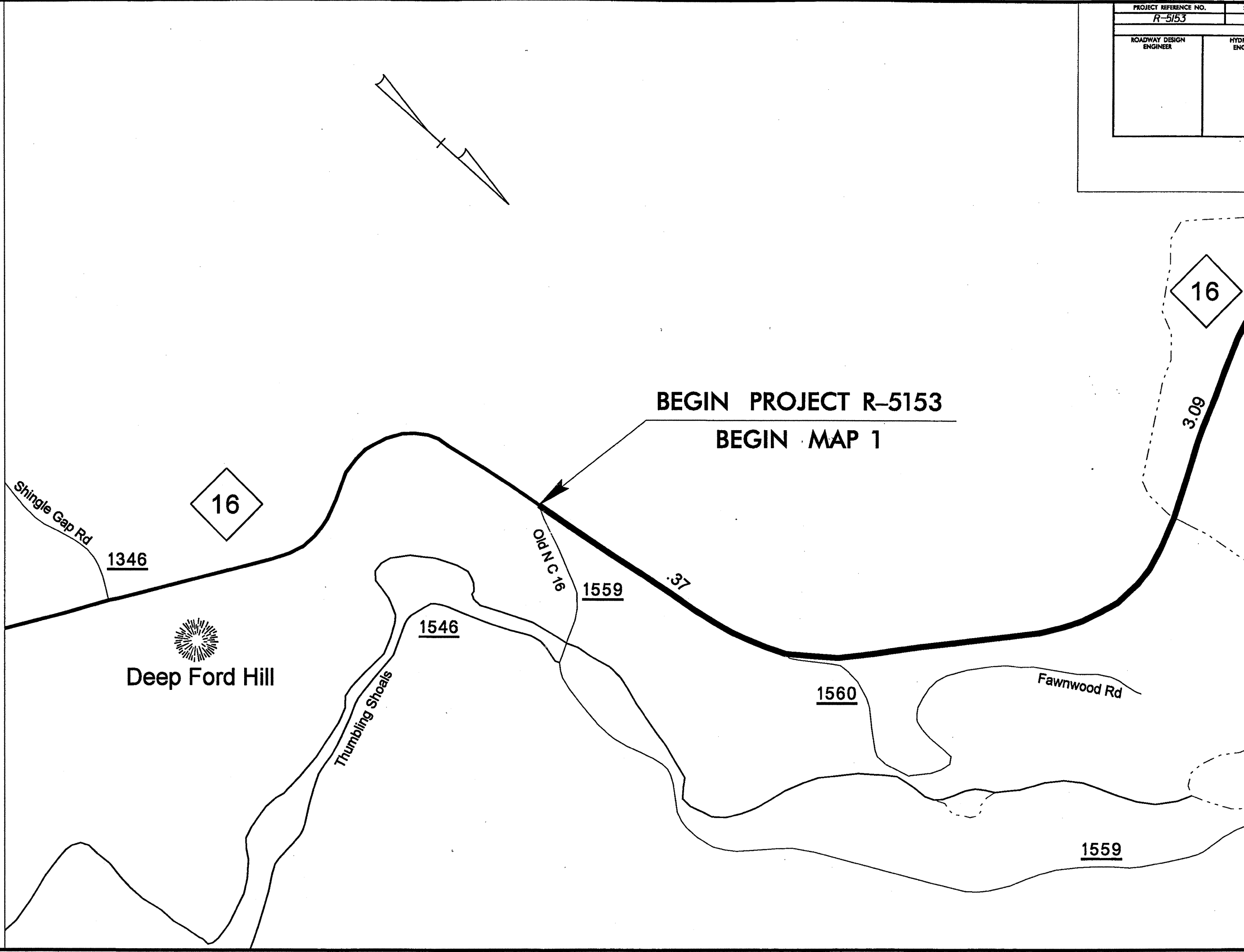
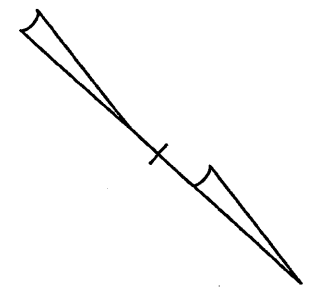
RIGHT OF WAY DATE: NA	JOE L. LAWS, PE DIVISION PROJECT MANAGER
LETTING DATE: JULY 21, 2009	MICHAEL A. PETTYJOHN, PE DIVISION ENGINEER

DIVISION OF HIGHWAYS
STATE OF NORTH CAROLINA

STATE HIGHWAY DESIGN ENGINEER P.E.

8/17/99

PROJECT REFERENCE NO. R-5153		SHEET NO. 2	
ROADWAY DESIGN ENGINEER		HYDRAULICS ENGINEER	



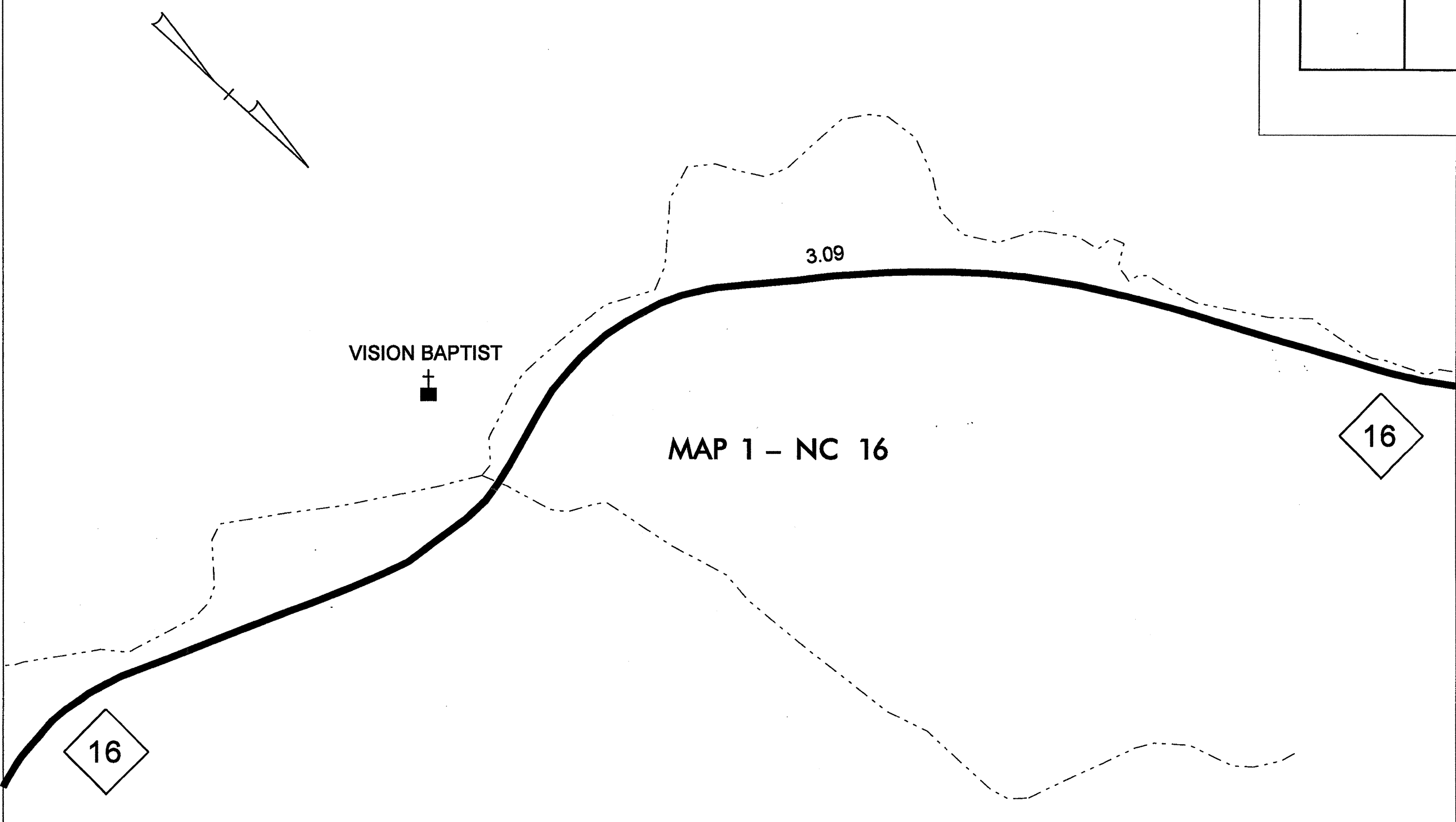
MATCHLINE * SEE SHEET 5 *

I:\APR-2009 14:25 d:\my documents\2551653 manager\economic stimulus projects\nc16\wilkes\R-5153.DOC_PSH04_040809.dgn

I:\APR-2009 1421
of Hwy documents\250913
17-APR-2009 14:21
manager\economic stimulus projects\nct\wilkes\R-5153.DDC_PSH05_040809.dgn

8/17/99

MATCHLINE * SEE SHEET 4 *



VISION BAPTIST

3.09

MAP 1 - NC 16

16

16

MATCHLINE * SEE SHEET 6 *

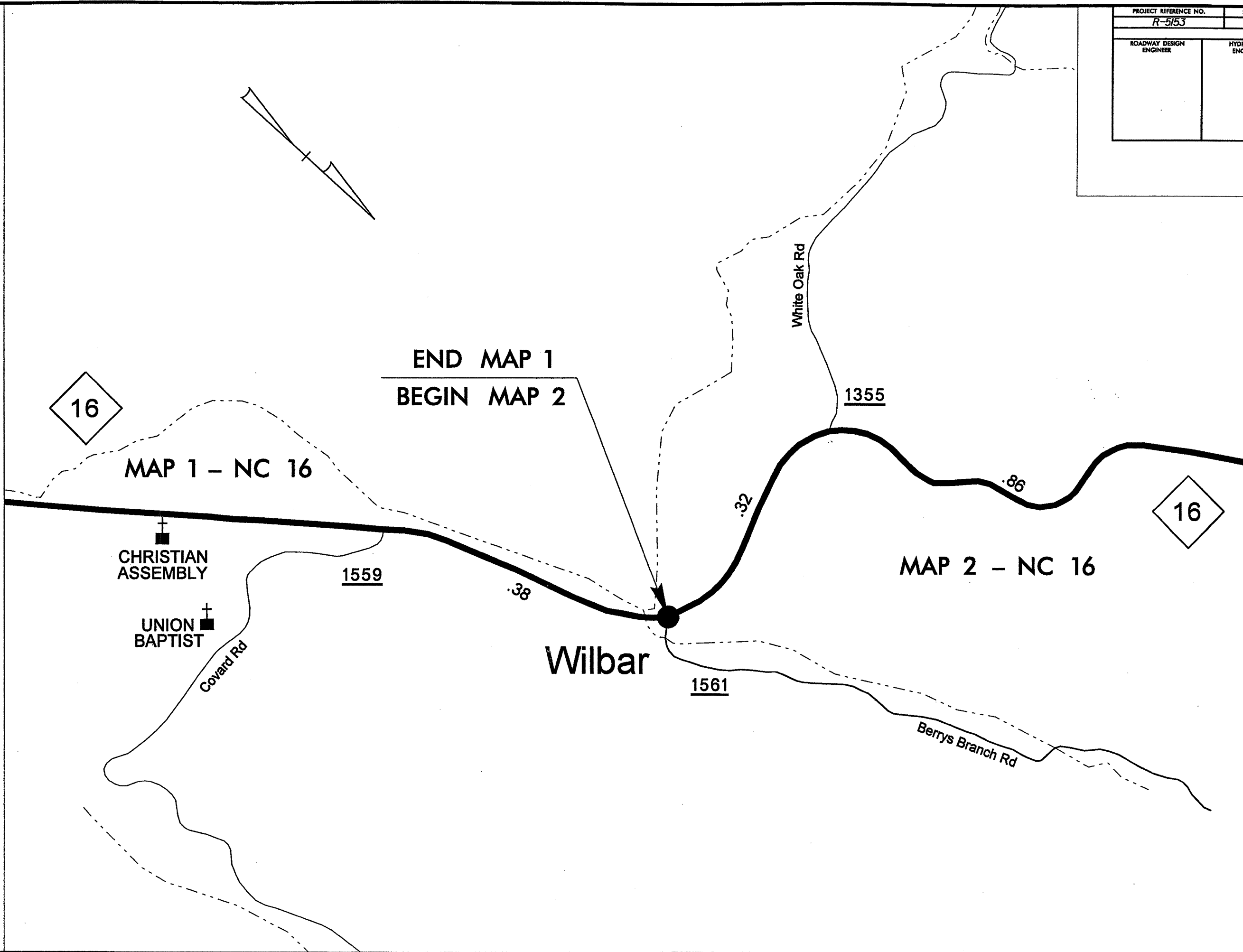
PROJECT REFERENCE NO. R-5153	SHEET NO. 3
ROADWAY DESIGN ENGINEER	HYDRAULICS ENGINEER

17-APR-2009 14:28
C:\my documents\2009\20090417\17-APR-2009 14:28\manager\economic stimulus projects\wilbar\17-APR-2009 14:28.dgn
8/17/99

PROJECT REFERENCE NO. R-5153	SHEET NO. 4
ROADWAY DESIGN ENGINEER	HYDRAULICS ENGINEER

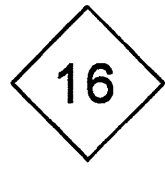
MATCHLINE * SEE SHEET 5 *

MATCHLINE * SEE SHEET 7 *



8/17/99
I:\APR-2009 14129
of\my documents\PS\153 manager\economic stimulus projects\nc16\wikes\R-5153_DDC_PSH07_040809.dgn

MATCHLINE * SEE SHEET 6 *



1357

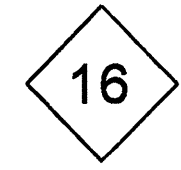
END MAP 2
BEGIN MAP 3

1.14

MAP 3 - NC 16

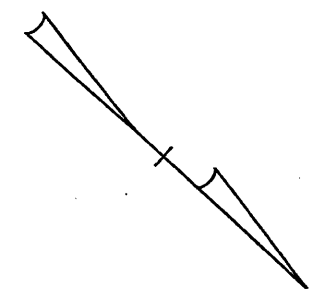
1358

Parsons Cut Rd



MATCHLINE * SEE SHEET 8 *

PROJECT REFERENCE NO. R-5153	SHEET NO. 5
ROADWAY DESIGN ENGINEER	HYDRAULICS ENGINEER



SOUTH

FORK

8/17/99

PROJECT REFERENCE NO.		SHEET NO.	
R-5153		6	
ROADWAY DESIGN ENGINEER		HYDRAULICS ENGINEER	

MATCHLINE * SEE SHEET 7 *

16

MAP 3 - NC 16

1.13

1443

Timber Ridge

.77

PINEY RIDGE BAPTIST

1581

END MAP 3
BEGIN MAP 4

16

MATCHLINE * SEE SHEET 9 *

I:\APR-2009 14:30
of Any documents
17-APR-2009 14:30
manager\economic stimulus projects\nclb\likes\R-5153.DDC.PSH08_040809.dgn

17-APR-2009 14:31
c:\my documents\p255\p255.dwg
manager\economic stimulus projects\nci6wikes\R-5153.DDC.FSH09_040809.dgn
8/17/99

MATCHLINE * SEE SHEET 8 *

Meditation Mountain



Ashe

16

END PROJECT R-5153
END MAP 5

END MAP 4
BEGIN MAP 5

.82

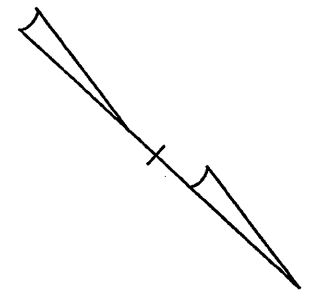
1630

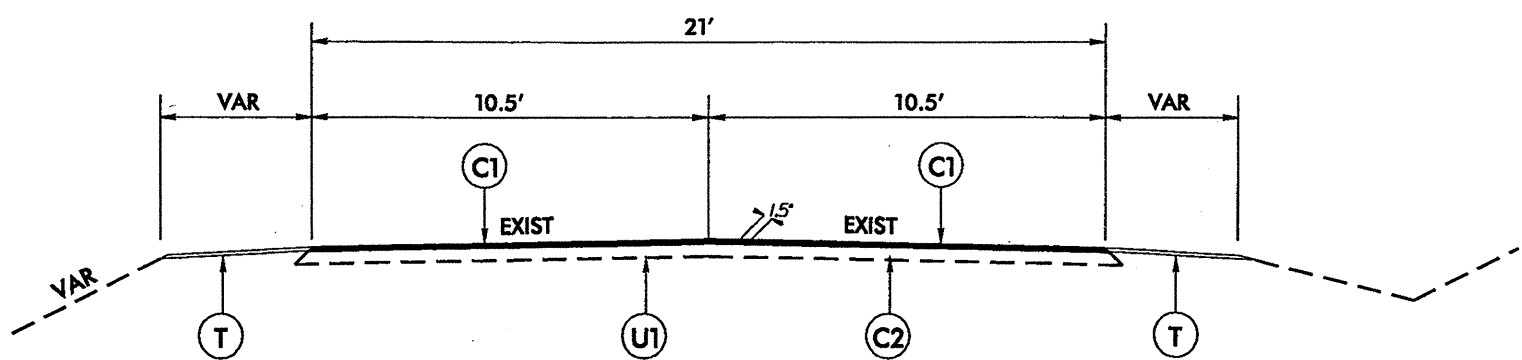
.59

County

1581

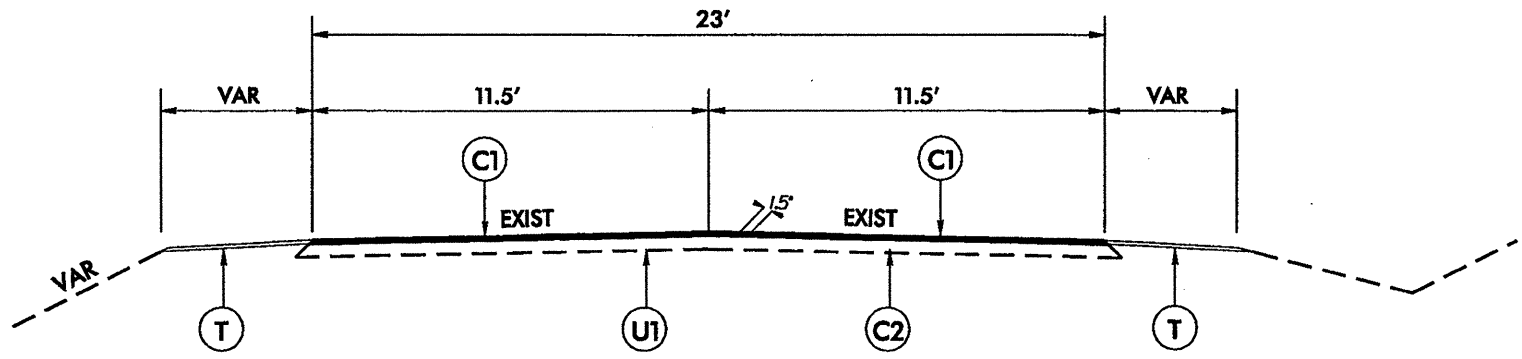
PROJECT REFERENCE NO. R-5153	SHEET NO. 7
ROADWAY DESIGN ENGINEER	HYDRAULICS ENGINEER





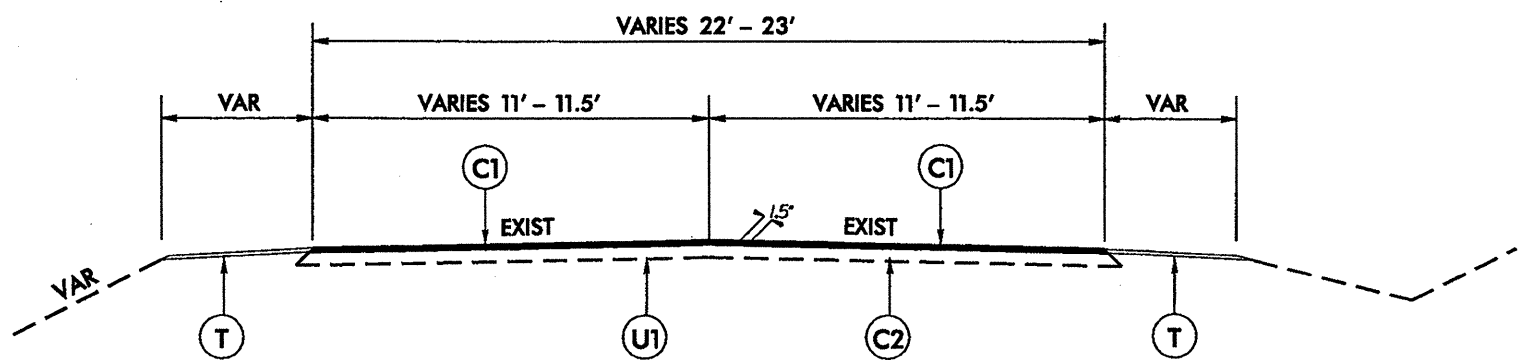
TYPICAL SECTION NO. 1

MAP #1 - NC 16 FROM PAVEMENT JOINT AT SR 1559 TO SR 1561 (3.73 MI)
 MAP #3 - NC 16 FROM SR 1357 TO SR 1581 (3.05 MI)
 NOTE: 1.5" MILLING AT BRIDGES #51 AND #57
 USE TYPICAL SECTION NO. 5 FOR 3-LANE SECTIONS



TYPICAL SECTION NO. 2

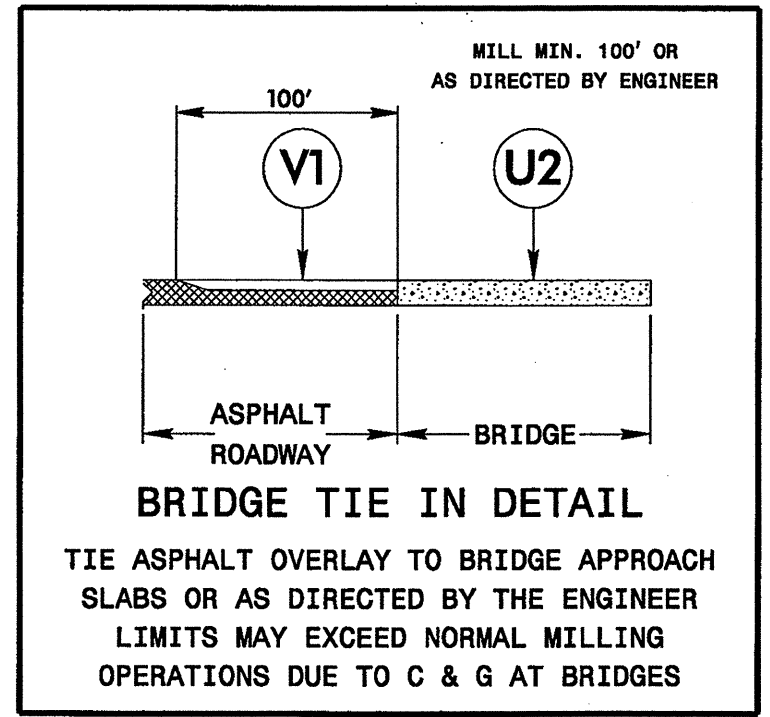
MAP #2 - NC 16 FROM SR 1561 TO SR 1357 (1.19 MI)
 USE TYPICAL SECTION NO. 5 FOR 3-LANE SECTIONS



TYPICAL SECTION NO. 3

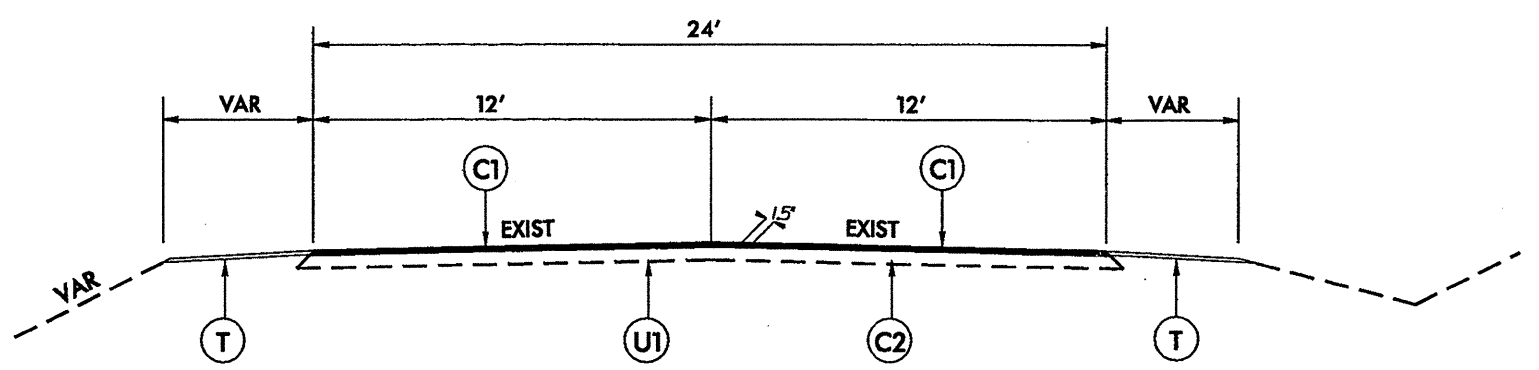
MAP #4 - NC 16 FROM SR 1581 TO SR 1630 (0.84 MI)
 USE TYPICAL SECTION NO. 5 FOR 3-LANE SECTIONS

PAVEMENT SCHEDULE	
C1	1.5" ASPHALT CONCRETE SURFACE COURSE, TYPE S 9.5 B, AT AN AVERAGE RATE OF 168 LBS. PER SQ. YD.
C2	PATCH EXISTING PAVEMENT WITH ASPHALT CONCRETE SURFACE COURSE, TYPE S 9.5 B. DEPTH VARIES 0.5" TO 1". WIDTH VARIES TO 4' AND WILL BE AT LOCATIONS AS DETERMINED BY ENGINEER.
T	SHOULDER RECONSTRUCTION
U1	EXISTING ASPHALT PAVEMENT
U2	EXISTING BRIDGE DECK
V1	1.5" MILLING



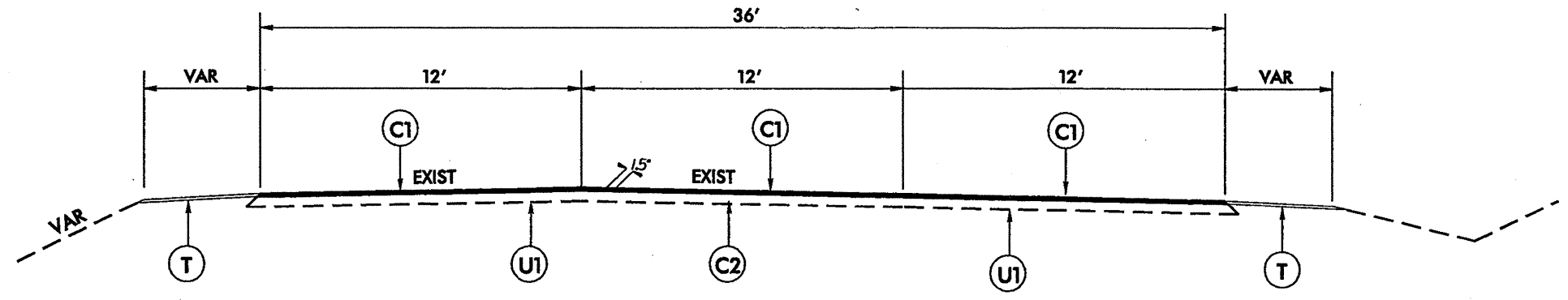
R-5153: NC 16 FROM SR 1559 TO ASHE COUNTY LINE		
DIVISION II WILKES COUNTY		
REVISIONS	INT.	DATE
N.C. DEPARTMENT of TRANSPORTATION DIVISION of HIGHWAYS DIVISION ELEVEN		SCALE: N/A DATE: 4/2009 PREPARED BY: J. L. LAWS REVIEWED BY:

30-APR-2009 16:01
 c:\my documents\projects\economic stimulus projects\wilkes\5153.dde.tlp-040809.dgn
 6/2/99



TYPICAL SECTION NO. 4

MAP #5 - NC 16 FROM SR 1630 TO ASHE COUNTY LINE (0.54 MI)



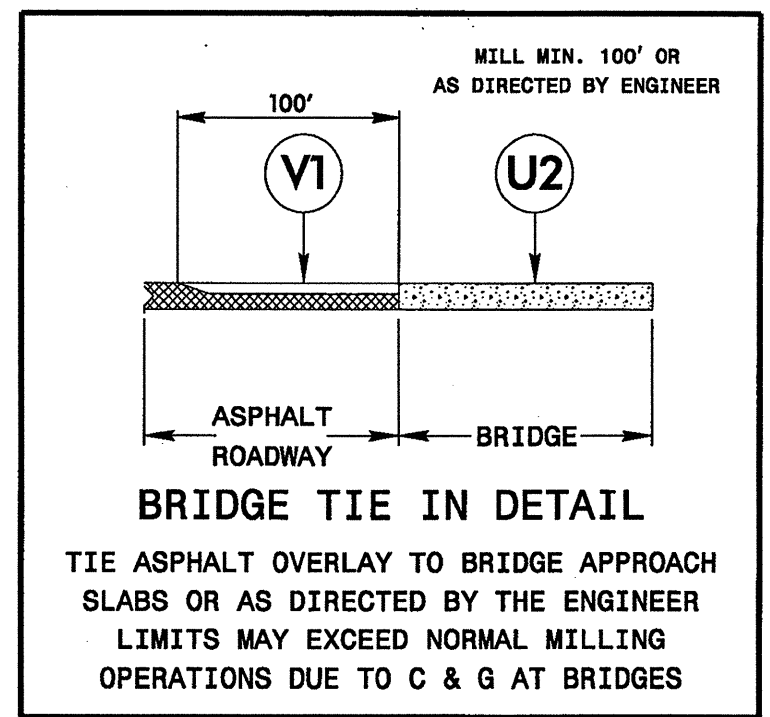
TYPICAL SECTION NO. 5

THREE LANE SECTION IN MAP #2 - NC 16 FROM 0.49 MI NORTH OF SR 1355 TO 0.80 MI NORTH OF SR 1355 (0.31 MI)

THREE LANE SECTION IN MAP #3 - NC 16 FROM 0.09 MI NORTH OF SR 1358 TO 0.67 MI NORTH OF SR 1358 (0.58 MI)

THREE LANE SECTION IN MAP #4 - NC 16 FROM 0.07 MI SOUTH OF SR 1581 TO 0.38 MI NORTH OF SR 1581 (0.45 MI)

PAVEMENT SCHEDULE	
C1	1.5" ASPHALT CONCRETE SURFACE COURSE, TYPE S 9.5 B, AT AN AVERAGE RATE OF 168 LBS. PER SQ. YD.
C2	PATCH EXISTING PAVEMENT WITH ASPHALT CONCRETE SURFACE COURSE, TYPE S 9.5 B. DEPTH VARIES 0.5" TO 1". WIDTH VARIES TO 4' AND WILL BE AT LOCATIONS AS DETERMINED BY ENGINEER.
T	SHOULDER RECONSTRUCTION
U1	EXISTING ASPHALT PAVEMENT
U2	EXISTING BRIDGE DECK
V1	1.5" MILLING



R-5153: NC 16 FROM SR 1559 TO ASHE COUNTY LINE

DIVISION II WILKES COUNTY

REVISIONS	INT.	DATE

SCALE: N/A DATE: 4/2009

PREPARED BY: J. L. LAWS

REVIEWED BY:

REVIEWED BY:

N.C. DEPARTMENT of TRANSPORTATION
DIVISION of HIGHWAYS
DIVISION ELEVEN

30-APR-2009 16:01
 c:\my documents\p5153\manager\economic stimulus projects\wilkes\p-5153-ddc-tyr-040809.dgn
 11:51 AM 2/2/2009

PROJECT NO.	SHEET NO.	TOTAL NO.
R - 5153	10	11

SUMMARY OF QUANTITIES

PROJECT NO	COUNTY	MAP NO	ROUTE	DESCRIPTION	TYP NO	FINAL SURFACE TESTING REQUIRED	LENGTH MI	WIDTH FT	INCIDENTAL STONE BASE TONS	SHOULDER RECONSTRUCTION SMI	1/2" MILLING SY	SURFACE COURSE, S9.5B TONS	PG 64-22 PLANT MIX TONS	PATCHING EXISTING PAVEMENT TONS	STEEL BM GUARDRAIL LF	STEEL BM GUARDRAIL, SHOP CURVED LF	GUARDRAIL ANCHOR UNITS, TYPE 350 EA	REMOVE & RESET EXISTING END UNIT LF	EXTRA LENGTH GUARDRAIL POST (9' STEEL) EA	SEED & MULCHING AC
R - 5153	Wilkes	1	NC 16	FROM SR 1559 TO SR 1561	1	No	3.73	21	115	7.46	2,667	4,053	243	243						3.62
R - 5153	Wilkes	2	NC 16	FROM SR 1561 TO SR 1357	2 & 5	No	1.19	23	40	2.38		1,519	91		975		4	50	15	1.15
R - 5153	Wilkes	3	NC 16	FROM SR 1357 TO SR 1581	1 & 5	No	3.05	21	95	6.1		3,690	221	282	1,725	25	16		5	2.96
R - 5153	Wilkes	4	NC 16	FROM SR 1581 TO SR 1630	3 & 5	No	0.84	22.5	30	1.68		1,190	71	117	1,400		8			0.81
R - 5153	Wilkes	5	NC 16	FROM SR 1630 TO ASHE COUNTY LINE	4	No	0.54	24	20	1.08		671	40	35	200	25	2			0.52
TOTAL FOR PROJ NO. R - 5153							9.35		300	18.7	2,667	11,123	666	677	4,300	50	30	50	20	9.06
GRAND TOTAL							9.35		300	18.7	2,667	11,123	666	677	4,300	50	30	50	20	9.06

PAVEMENT MARKING AND MARKER QUANTITIES

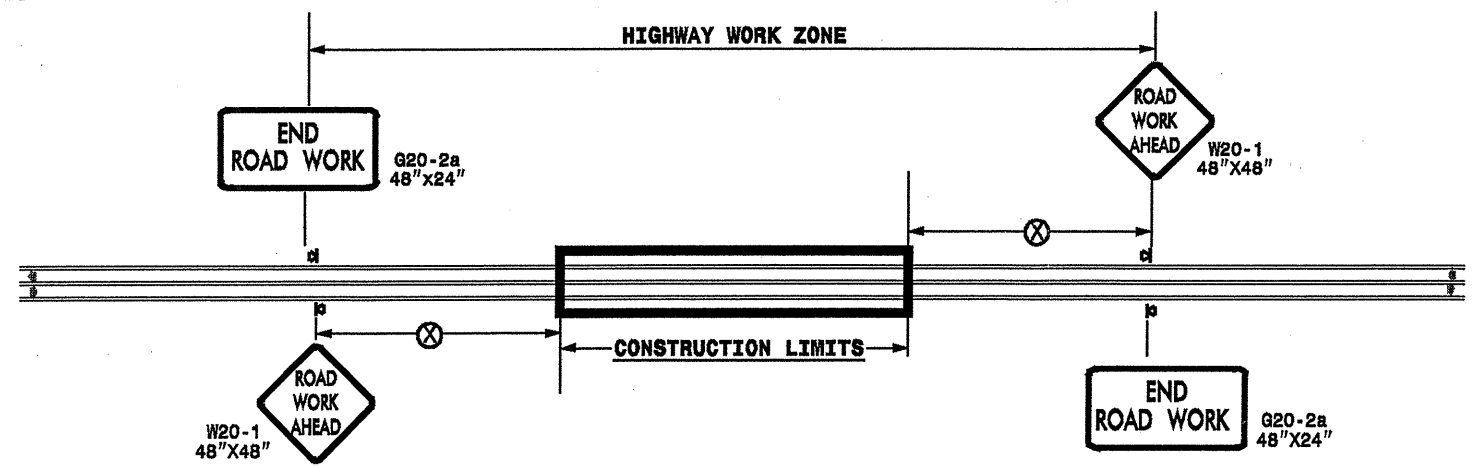
PROJECT NO	COUNTY	MAP NO	ROUTE	DESCRIPTION	TRAFFIC CONTROL	4810000000-E		4847000000-E		4725000000-N	4905000000-N
						4" WHITE PAINT LF	4" YELLOW PAINT LF	4" YELLOW POLYUREA (Highly Reflective Elements) LF	4" WHITE POLYUREA (Highly Reflective Elements) LF	THERMO STR ARROW (MERGE) EA	SNOW PLOWABLE MARKERS EA
R - 5153	Wilkes	1	NC 16	FROM SR 1559 TO SR 1561	Lump Sum	800	800	38,427	39,589		247
R - 5153	Wilkes	2	NC 16	FROM SR 1561 TO SR 1357	*			12,766	13,176	3	120
R - 5153	Wilkes	3	NC 16	FROM SR 1357 TO SR 1581	*			32,508	33,366	3	314
R - 5153	Wilkes	4	NC 16	FROM SR 1581 TO SR 1630	*			8,970	9,472	3	99
R - 5153	Wilkes	5	NC 16	FROM SR 1630 TO ASHE COUNTY LINE	*			5,802	5,802		48
TOTAL FOR PROJ NO. R - 5153						800	800	98,473	101,405	9	828
GRAND TOTAL						800	800	98,473	101,405	9	828

2006 ROADWAY ENGLISH STANDARD DRAWINGS

The following Roadway Standards as appear in "Roadway Standard Drawings" Highway Design Branch N. C. Department of Transportation - Raleigh, N. C., Dated July 18, 2006 are applicable to this project and by reference hereby are considered a part of these plans:

STD.NO.	TITLE
DIVISION 8 - INCIDENTALS	
862.01	Guardrail Placement
862.02	Guardrail Installation

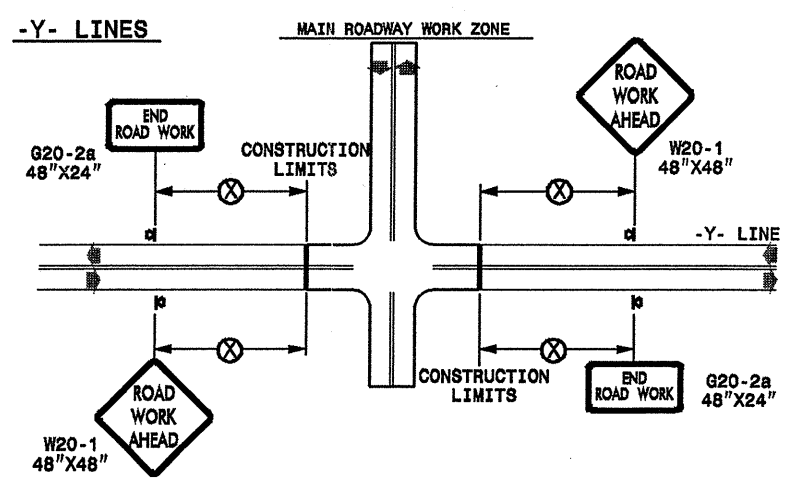
TWO-WAY UNDIVIDED ** (L-LINES)



POSTED SPEED LIMIT (M.P.H.)	RECOMMENDED MINIMUM SIGN SPACING
≤ 50	500'
≥ 65	1000'

STATE OF NORTH CAROLINA
DEPT. OF TRANSPORTATION
DIVISION OF HIGHWAYS
RALEIGH, N.C.

ROADWAYS INTERSECTING ALONG 2 WAY UNDIVIDED WORK ZONE (Y-LINES)



DETAIL DRAWING
FOR TWO-WAY UNDIVIDED
WORK ZONE WARNING SIGNS

GENERAL NOTES

- USE FLUORESCENT ORANGE SHEETING (TYPE VII OR HIGHER) ON ALL ADVANCE WORK ZONE SIGNS.
- DO NOT INSTALL ADVANCE WARNING SIGNS MORE THAN 3 DAYS PRIOR TO BEGINNING OF WORK.
- ALL SIGN SPACING DIMENSIONS ARE APPROXIMATE, FIELD ADJUST AS NECESSARY OR AS DIRECTED.
- USE PORTABLE WORK ZONE SIGNS ONLY WITH PORTABLE WORK ZONE SIGN STANDS SPECIFICALLY DESIGNED FOR ONE ANOTHER. PORTABLE WORK ZONE SIGNS MAY BE ROLL UP OR APPROVED COMPOSITE.
- PROVIDE PORTABLE WORK ZONE SIGN STANDS, PORTABLE SIGNS AND SIGN SHEETING WHICH ARE LISTED ON THE NORTH CAROLINA DEPARTMENT OF TRANSPORTATION'S APPROVED PRODUCT LIST OR ACCEPTED AS TRAFFIC QUALIFIED BY THE TRAFFIC CONTROL UNIT.
- ** TWO-WAY UNDIVIDED ADVANCE WARNING SIGN CONFIGURATION MAY BE USED ON URBAN MULTI-LANE FACILITIES WHERE CONDITIONS LIMIT THE USE OF DUAL MOUNTED SIGNS AS DETERMINED BY THE ENGINEER.

LEGEND

◀ PORTABLE SIGN

➡ DIRECTION OF TRAFFIC FLOW

SHEET 1 OF 1

APPROVED: _____ DATE: _____	DETAIL DRAWING FOR TWO-WAY UNDIVIDED ADVANCED WORK ZONE WARNING SIGNS	SCALE: NONE		REVISIONS
SEAL		DATE: 7-98 10/01 DWG. BY: 10-98 03/04 DESIGN BY: 01/01 11/04 REVIEWED BY:		

I-MAY-2009 18:25
 s:\signing\resurfacing\030509\resurfacing2009\dwg\c2023xx.451003st1.r-5153.wilkes.nc16\c2023xx.451003st1.r-5153.2wayundivurbfrwys\july2006.por table.dgn
 pseyllor AT #Z1231502