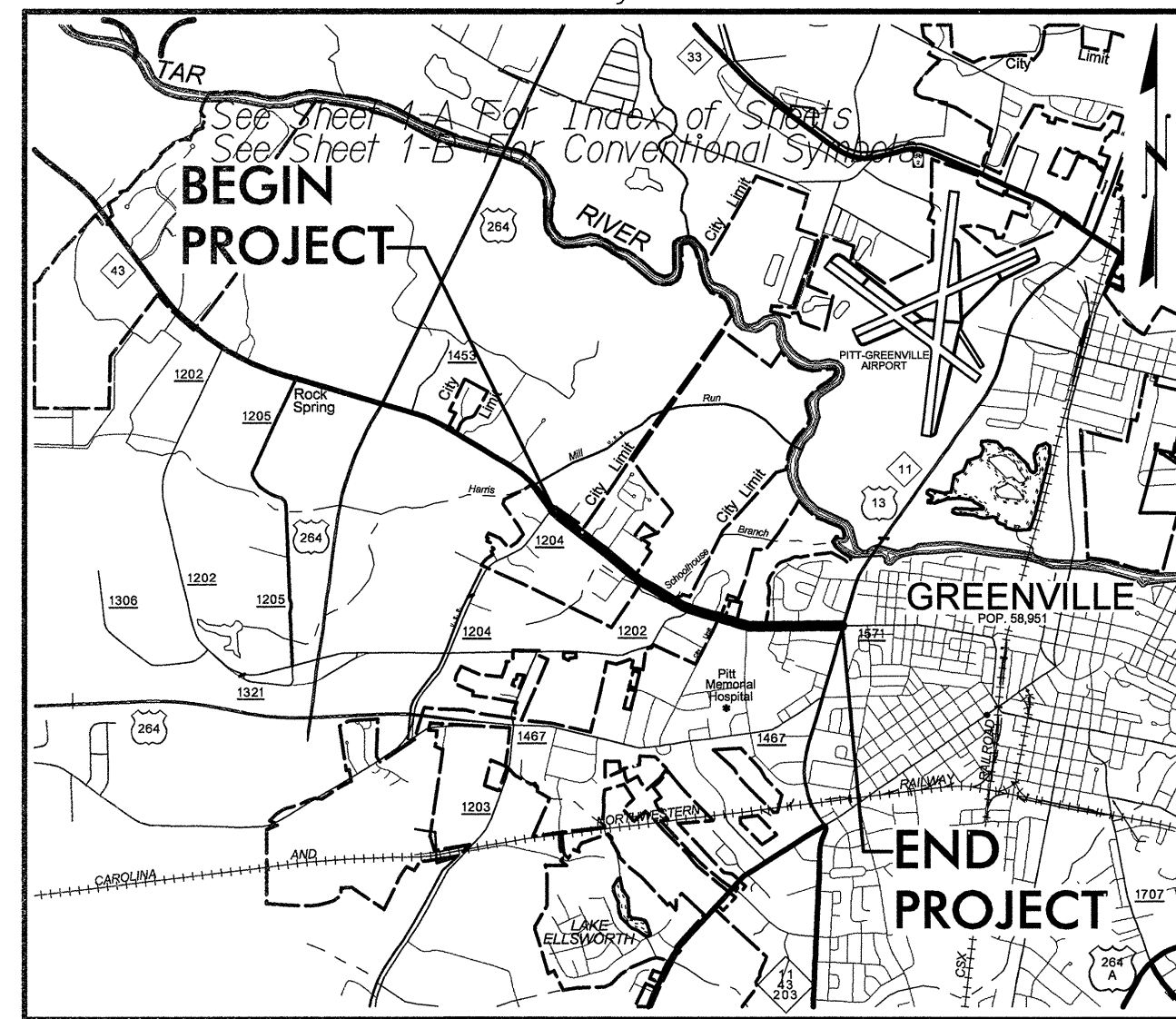


TIP PROJECT: U-5018B

See Sheet 1-A For Index of Sheets
See Sheet 1-B For Conventional Symbols



VICINITY MAP

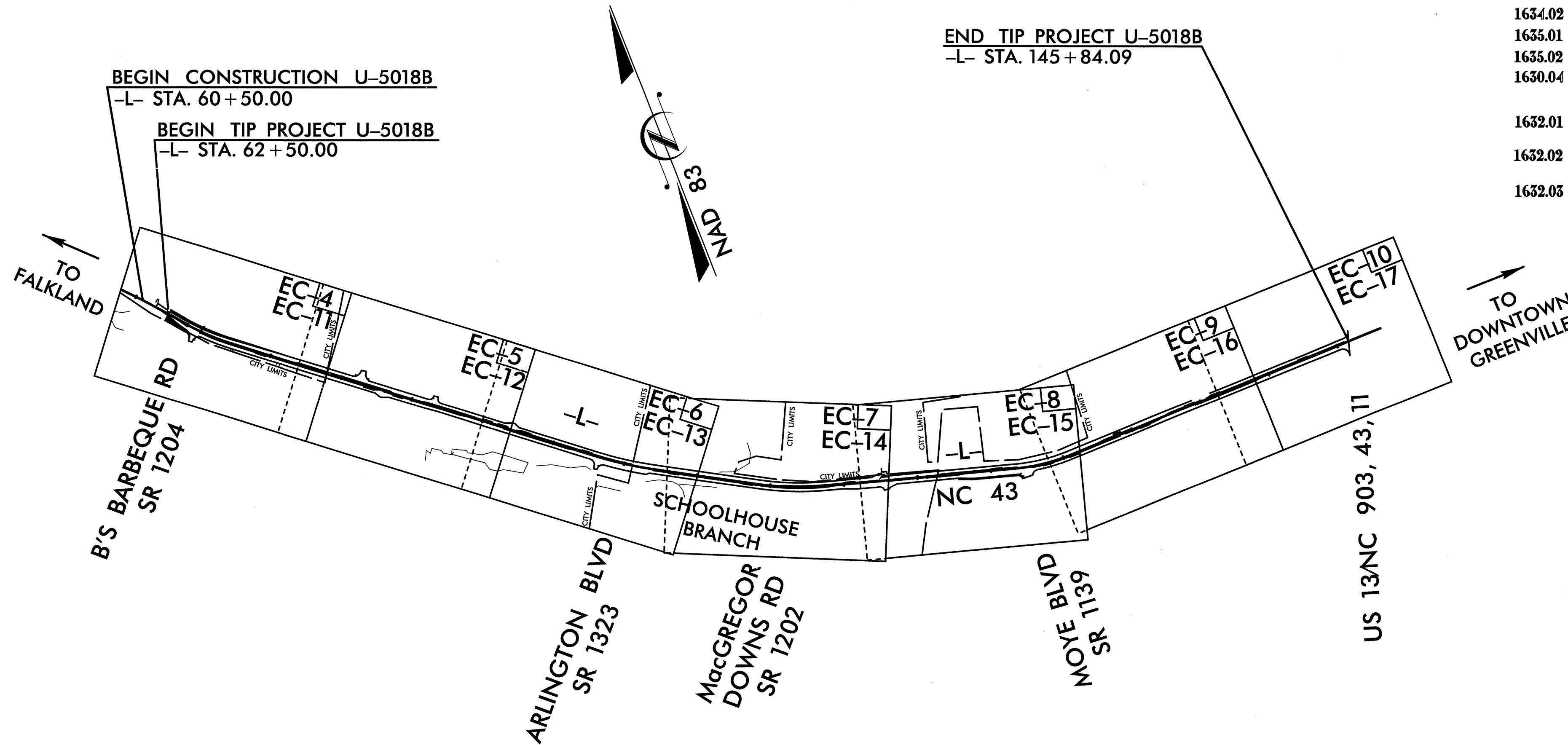
STATE OF NORTH CAROLINA

DIVISION OF HIGHWAYS

PLAN FOR PROPOSED HIGHWAY EROSION CONTROL

**LOCATION: GREENVILLE - NC 43 FROM WEST OF SR 1204 (B'S BARBEQUE ROAD)
TO US 13/NC 11 (MEMORIAL DRIVE)**

TYPE OF WORK: GRADING, PAVING, DRAINAGE, AND RETAINING WALL

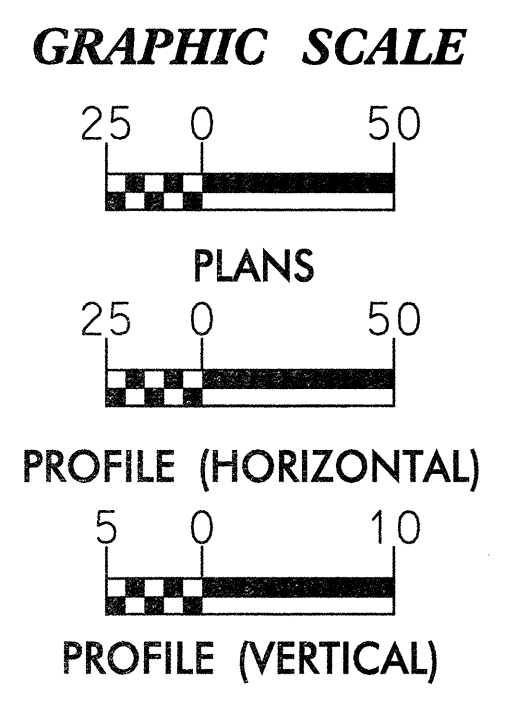


EROSION AND SEDIMENT CONTROL MEASURES

Std. #	Description	Symbol
1630.03	Temporary Silt Ditch	--- TSD ---
1630.05	Temporary Diversion	--- TD ---
1605.01	Temporary Silt Fence	--- SIF ---
1606.01	Special Sediment Control Fence	--- SSF ---
1622.01	Temporary Berms and Slope Drains	--- BSD ---
1630.01	Riser Basin	--- RB ---
1630.02	Silt Basin Type B	--- SB ---
1635.01	Temporary Rock Silt Check Type-A	--- TRSCA ---
	Temporary Rock Silt Check Type-B	--- TRSCB ---
	Wattle	--- W ---
1634.01	Temporary Rock Sediment Dam Type-A	--- TRSDA ---
1634.02	Temporary Rock Sediment Dam Type-B	--- TRSDB ---
1635.01	Rock Pipe Inlet Sediment Trap Type-A	--- RPISDA ---
1635.02	Rock Pipe Inlet Sediment Trap Type-B	--- RPISDB ---
1630.04	Stilling Basin	--- SB ---
	Rock Inlet Sediment Trap:	
1632.01	Type A	--- RISTRA ---
1632.02	Type B	--- RISTRB ---
1632.03	Type C	--- RISTRB ---
	Skimmer Basin	--- SKB ---
	Tiered Skimmer Basin	--- TSKB ---
	Infiltration Basin	--- IB ---

THIS PROJECT CONTAINS
EROSION CONTROL PLANS
FOR CLEARING AND
GRUBBING PHASE OF
CONSTRUCTION.

THIS PROJECT HAS
BEEN DESIGNED TO
SENSITIVE WATERSHED
STANDARDS.



ROADSIDE ENVIRONMENTAL UNIT
DIVISION OF HIGHWAYS
STATE OF NORTH CAROLINA

Prepared In the Office of:

MULKEY
ENGINEERS & CONSULTANTS

FOR
NORTH CAROLINA DEPARTMENT OF TRANSPORTATION

2006 STANDARD SPECIFICATIONS

RIGHT OF WAY DATE: _____

LETTING DATE: NOVEMBER 18, 2008

TIM JORDAN, PE
PROJECT ENGINEER

JEFF RECK, PE
HYDRAULICS ENGINEER

NCDOT CONTACT: JOHN ROUSE, PE

Roadway Standard Drawings

The following roadway english standards as appear in "Roadway Standard Drawings"- Roadway Design Unit - N. C. Department of Transportation - Raleigh, N. C., dated July 18, 2006 and the latest revision thereto are applicable to this project and by reference hereby are considered a part of these plans.

1604.01 Railroad Erosion Control Detail	1630.06 Special Stilling Basin
1605.01 Temporary Silt Fence	1632.01 Rock Inlet Sediment Trap Type A
1606.01 Special Sediment Control Fence	1632.02 Rock Inlet Sediment Trap Type B
1607.01 Gravel Construction Entrance	1632.03 Rock Inlet Sediment Trap Type C
1622.01 Temporary Berms and Slope Drains	1633.01 Temporary Rock Silt Check Type A
1630.01 Riser Basin	1634.01 Temporary Rock Sediment Dam Type A
1630.02 Silt Basin Type B	1634.02 Temporary Rock Sediment Dam Type B
1630.03 Temporary Silt Ditch	1635.01 Rock Pipe Inlet Sediment Trap Type A
1630.04 Stilling Basin	1635.02 Rock Pipe Inlet Sediment Trap Type B
1630.05 Temporary Diversion	

8/20/2008 R:\Hydro\cadd\NErosion Control\U5018B\U5018B_EC-1.sh.dgn

5/28/99

NOTE:

PLACE TEMPORARY ROCK SEDIMENT DAMS TYPE - B AND TEMPORARY ROCK SILT CHECKS TYPE - A AT DRAINAGE OUTLETS.

CLEARING AND GRUBBING EROSION CONTROL FOR CONSTRUCTION SHEET 4

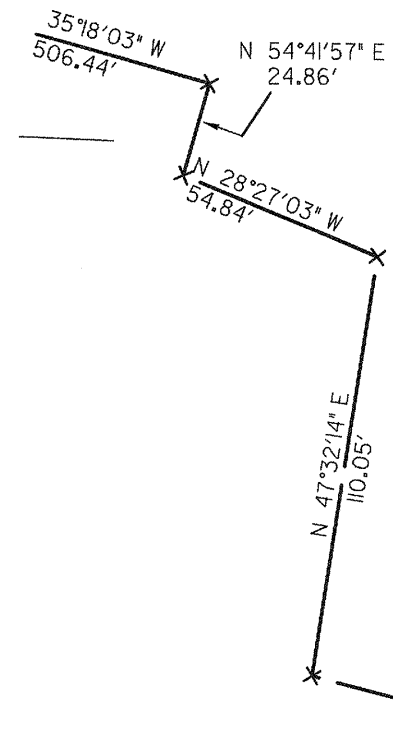
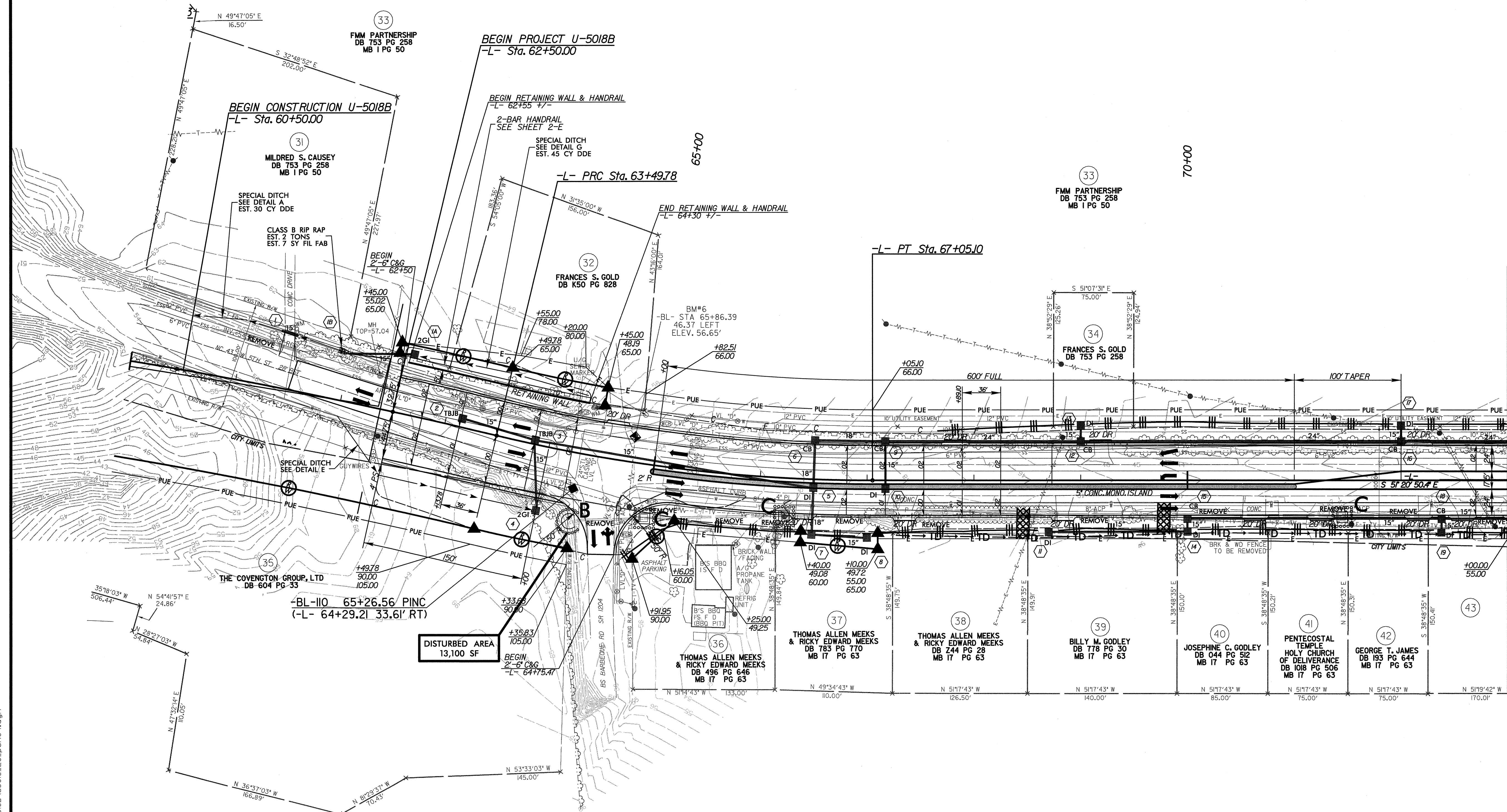
PI Sta 61+27.90
Δ = 5° 09' 00.9" (RT)
D = 1' 09' 35.4"
L = 444.05'
T = 222.17'
R = 4,940.00'
SE = 02'
RO = 72'

PI Sta 65+28.27
Δ = 13° 34' 19.5" (LT)
D = 3' 49' 11.0"
L = 355.32'
T = 178.49'
R = 1,500.00'
SE = 02*
RO = 72'

MULKEY
ENGINEERS & CONSULTANTS
PO BOX 33197
RALEIGH, N.C. 27636
(919) 881-1312
(919) 881-1318 (FAX)
WWW.MULKEYINC.COM

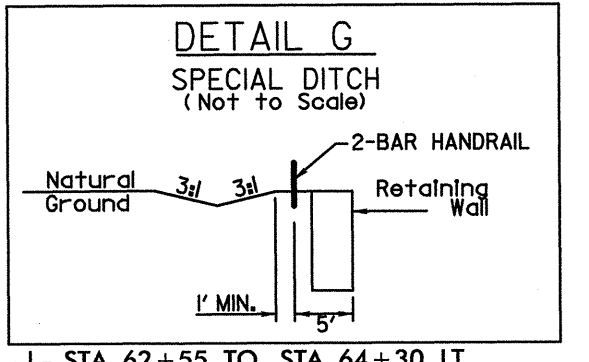
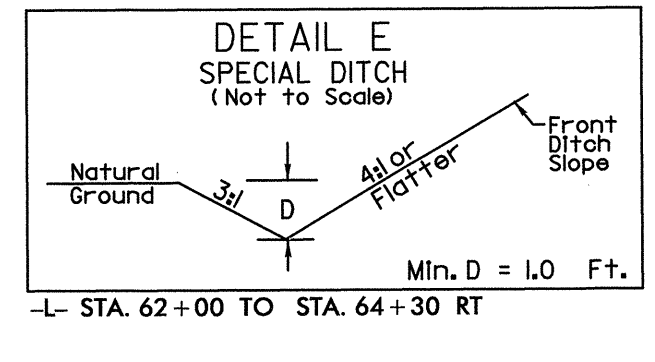
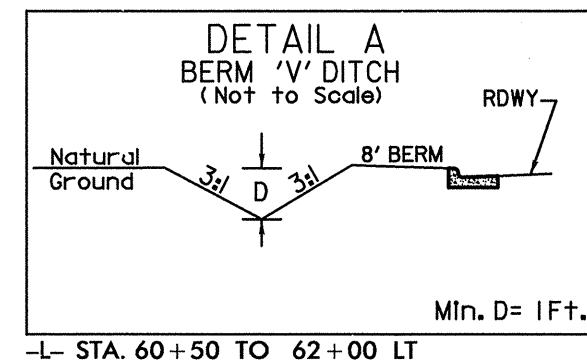
PROJECT REFERENCE NO.
U-5018B

SHEET NO.
EC-4/CONST.4



BL-110 65+26.56' P/INC
(-L- 64+29.21' 33.61' RT)

DISTURBED AREA
13,100 SF

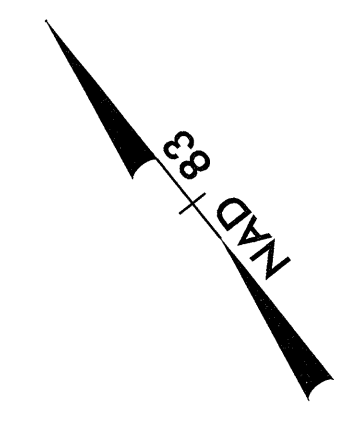


MATCH TO SHEET EC-5
-L- STA. 73+00.00

5/17/2009 jules\CADD\Erosion Control\U5018B\U5018B-EC.psh04.dgn
2:33:29 PM

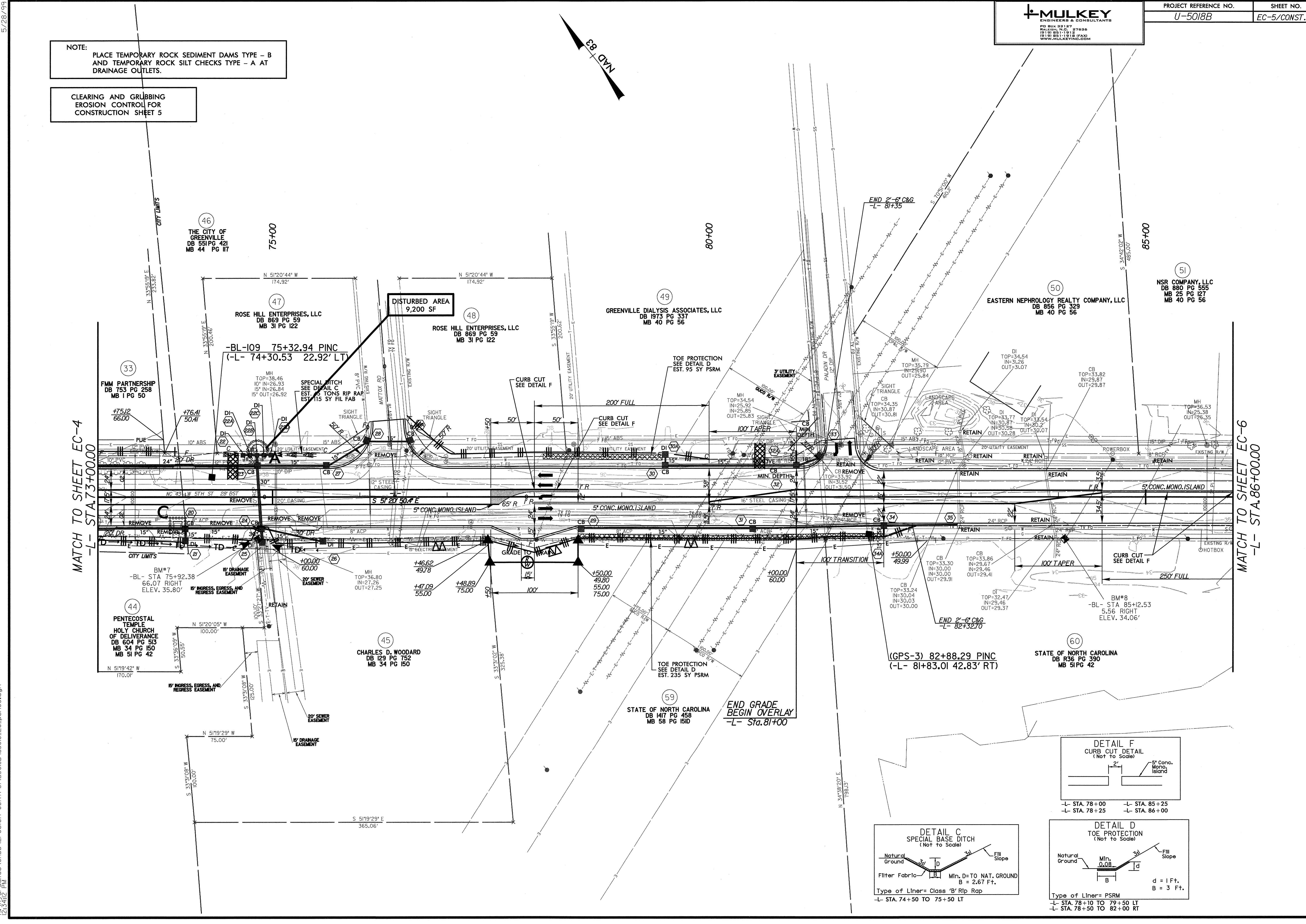
NOTE:
PLACE TEMPORARY ROCK SEDIMENT DAMS TYPE - B
AND TEMPORARY ROCK SILT CHECKS TYPE - A AT
DRAINAGE OUTLETS.

CLEARING AND GRUBBING
EROSION CONTROL FOR
CONSTRUCTION SHEET 5



MATCH TO SHEET EC-4
-L- STA. 73+00.00

MATCH TO SHEET EC-6
-L- STA. 86+00.00



46 THE CITY OF GREENVILLE
DB 551 PG 421
MB 44 PG 117

47 ROSE HILL ENTERPRISES, LLC
DB 869 PG 59
MB 31 PG 122

48 ROSE HILL ENTERPRISES, LLC
DB 869 PG 59
MB 31 PG 122

49 GREENVILLE DIALYSIS ASSOCIATES, LLC
DB 1973 PG 337
MB 40 PG 56

50 EASTERN NEPHROLOGY REALTY COMPANY, LLC
DB 856 PG 329
MB 40 PG 56

51 NSR COMPANY, LLC
DB 880 PG 555
MB 25 PG 121
MB 40 PG 56

59 STATE OF NORTH CAROLINA
DB 1417 PG 458
MB 58 PG 151D

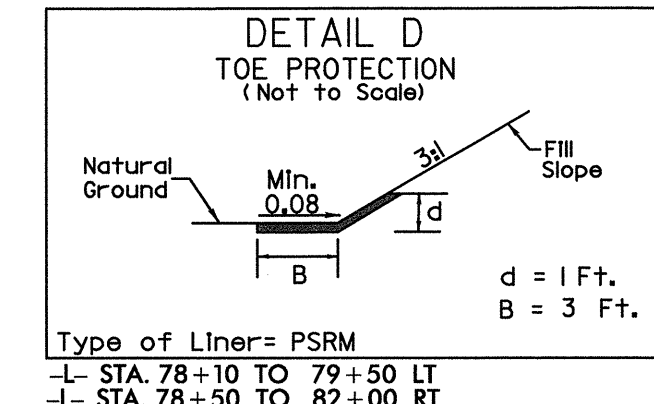
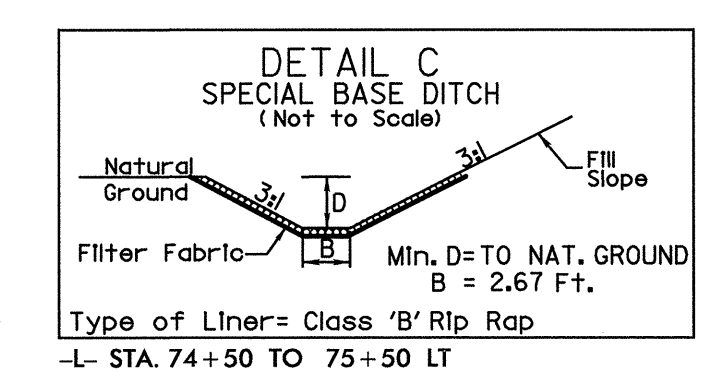
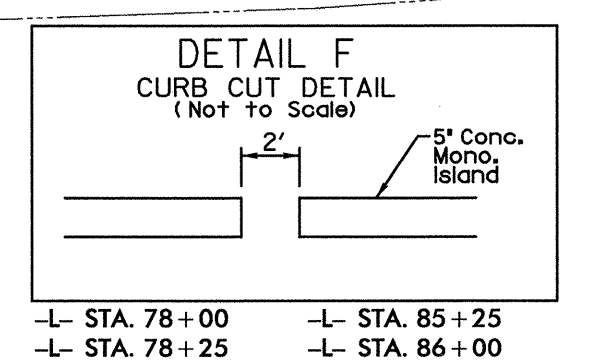
60 STATE OF NORTH CAROLINA
DB R36 PG 390
MB 51 PG 42

33 FMM PARTNERSHIP
DB 753 PG 258
MB 1 PG 50

44 PENTECOSTAL TEMPLE
HOLY CHURCH OF DELIVERANCE
DB 604 PG 513
MB 34 PG 150
MB 51 PG 42

45 CHARLES D. WOODARD
DB 129 PG 752
MB 34 PG 150

(GPS-3) 82+88.29 PINC
(-L- 81+83.01 42.83' RT)



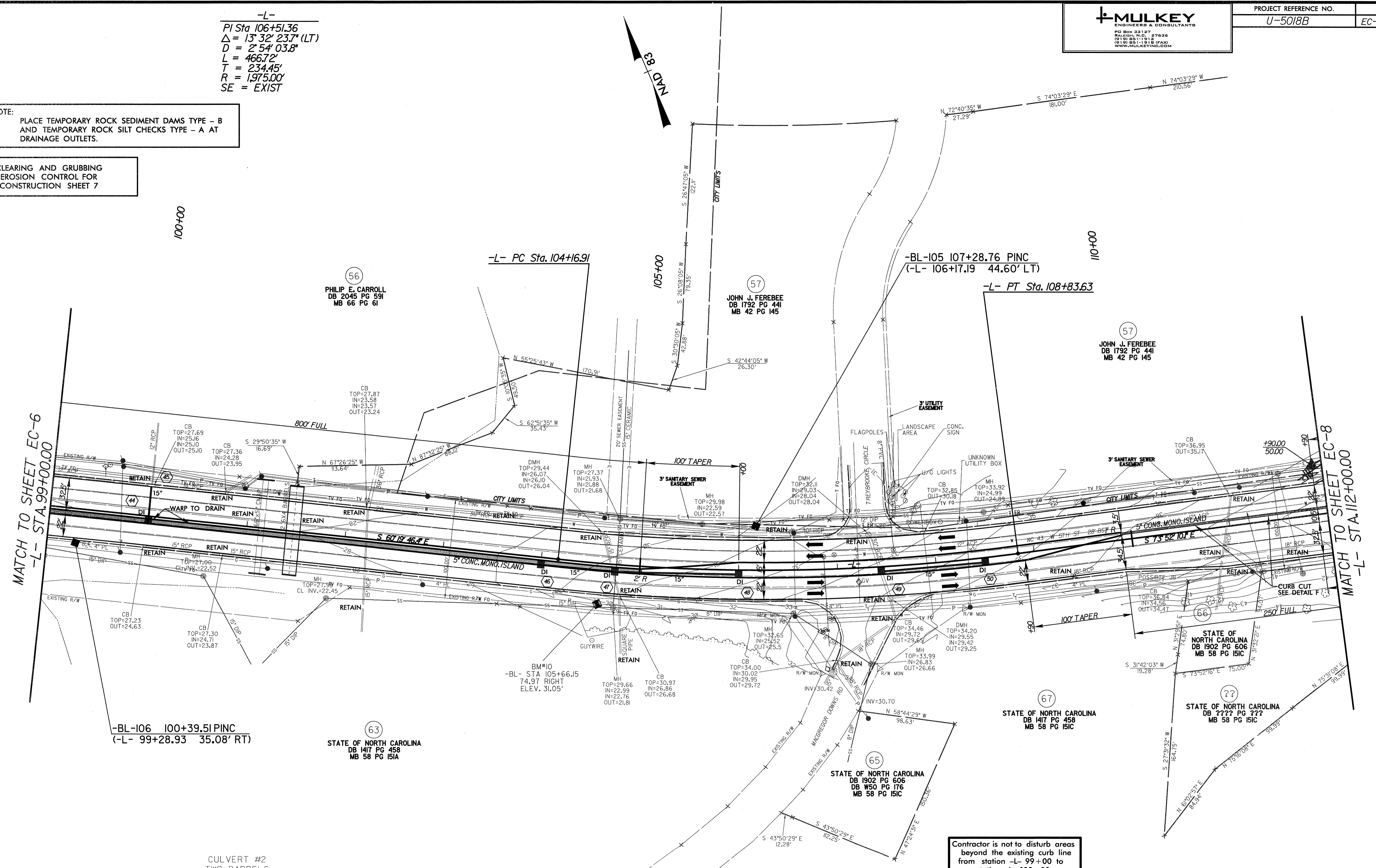
5/7/2009 jules\CADD\Erosion Control\U5018B\U5018B_EC-psn05.dgn
P3:34:07 PM



-L-
 PI Sta 106+51.36
 $\Delta = 13^{\circ} 32' 23.7" (LT)$
 $D = 2^{\circ} 54' 03.8"$
 $L = 466.72'$
 $T = 234.45'$
 $R = 1975.00'$
 SE = EXIST

NOTE:
 PLACE TEMPORARY ROCK SEDIMENT DAMS TYPE - B
 AND TEMPORARY ROCK SILT CHECKS TYPE - A AT
 DRAINAGE OUTLETS.

CLEARING AND GRUBBING
 EROSION CONTROL FOR
 CONSTRUCTION SHEET 7



MATCH TO SHEET EC-6
 -L- STA. 99+00.00

MATCH TO SHEET EC-8
 -L- STA. 112+00.00

-BL-106 100+39.51 PINC
 (-L- 99+28.93 35.08' RT)

STATE OF NORTH CAROLINA
 DB 1417 PG 458
 MB 58 PG 151A

STATE OF NORTH CAROLINA
 DB 1902 PG 606
 DB W50 PG 176
 MB 58 PG 151C

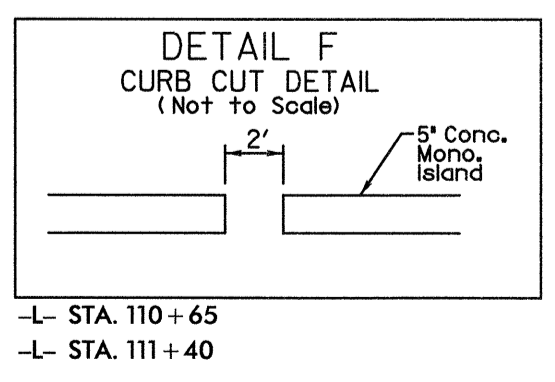
STATE OF NORTH CAROLINA
 DB 1417 PG 458
 MB 58 PG 151C

STATE OF NORTH CAROLINA
 DB ??? PG ???
 MB 58 PG 151C

CULVERT #2
 TWO BARRELS

	NORTH	EAST	ELEV.
CUL1	682644.09	2473287.16	20.80
CUL2	682641.55	2473292.22	20.79
CUL3	682641.10	2473292.78	20.78
CUL4	682637.95	2473297.93	20.77
CE1			24.82
HW1			26.32
CUL5	682564.13	2473242.32	21.35
CUL6	682561.20	2473247.09	21.38
CUL7	682560.65	2473247.82	21.37
CUL8	682557.95	2473252.87	21.39
CE2			25.39
HW2			26.89

Contractor is not to disturb areas
 beyond the existing curb line
 from station -L- 99+00 to
 station -L- 103+00



5/28/99
 8/18/2008
 B:\Projects\05018B\U5018_EC.psh7.dgn
 3:24:40 PM

5/28/99

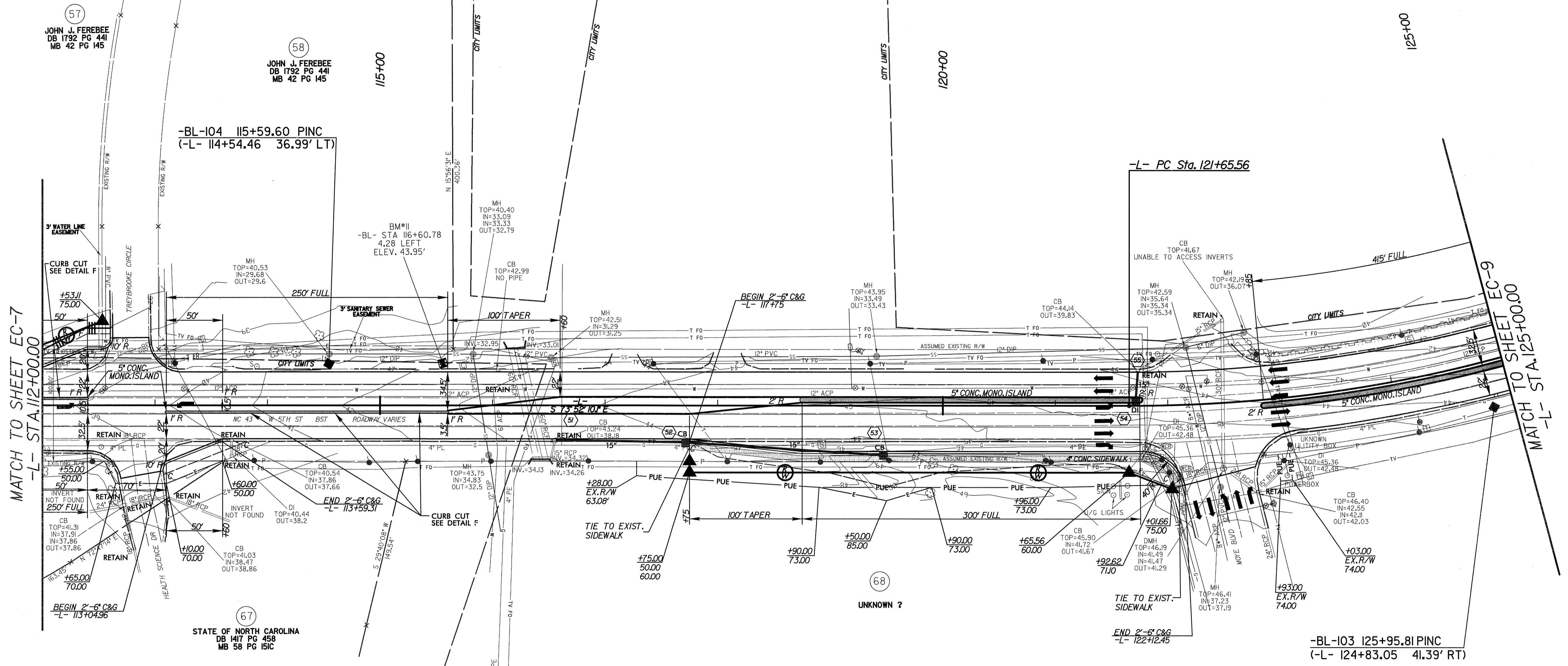
MULKEY
ENGINEERS & CONSULTANTS
PO Box 22127
Raleigh, N.C. 27622
(919) 851-1912
(919) 851-1918 FAX
WWW.MULKEYING.COM

PROJECT REFERENCE NO.	SHEET NO.
U-5018B	EC-8/CONST.8

NOTE:
PLACE TEMPORARY ROCK SEDIMENT DAMS TYPE - B
AND TEMPORARY ROCK SILT CHECKS TYPE - A AT
DRAINAGE OUTLETS.

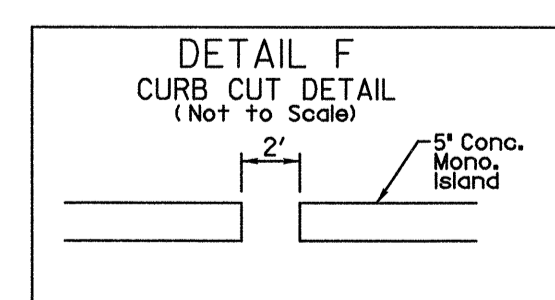
CLEARING AND GRUBBING
EROSION CONTROL FOR
CONSTRUCTION SHEET 8

-L-
PI Sta 123+53.14
 $\Delta = 16' 44" 19.7" (LT)$
 $D = 4' 29" 37.6"$
 $L = 372.49'$
 $T = 187.58'$
 $R = 1,275.00'$
SE = EXIST



MATCH TO SHEET EC-7
-L- STA. 112+00.00

MATCH TO SHEET EC-9
-L- STA. 125+00.00



- L- STA. 112+15
- L- STA. 113+85
- L- STA. 114+60
- L- STA. 115+35

Contractor is not to disturb areas
beyond the existing curb line
from station -L- 114+00 to
station -L- 116+00

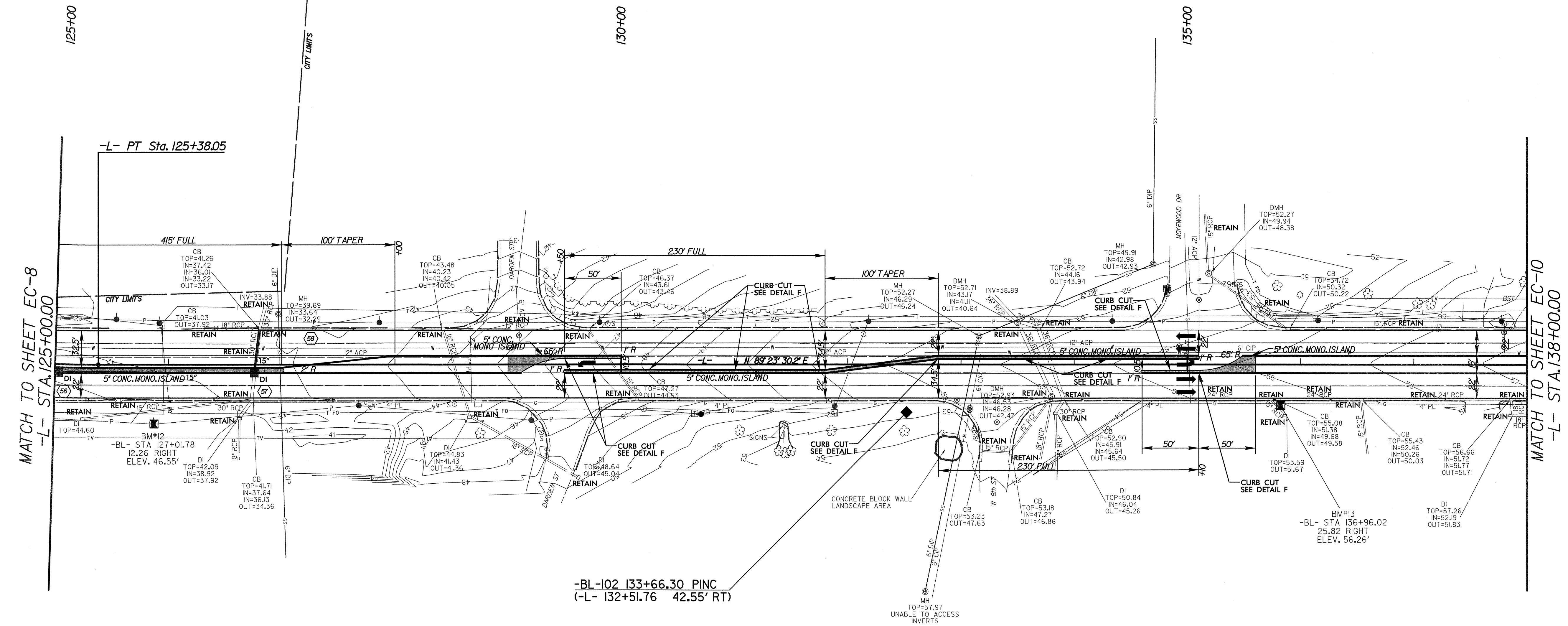
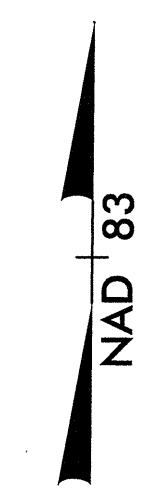
8/19/2008
 R:\Projects\15018B\EC-8\CONSTR\15018B_EC_CONST.dgn
 3:42:43 PM



NOTE:
PLACE TEMPORARY ROCK SEDIMENT DAMS TYPE - B
AND TEMPORARY ROCK SILT CHECKS TYPE - A AT
DRAINAGE OUTLETS.

CLEARING AND GRUBBING
EROSION CONTROL FOR
CONSTRUCTION SHEET 9

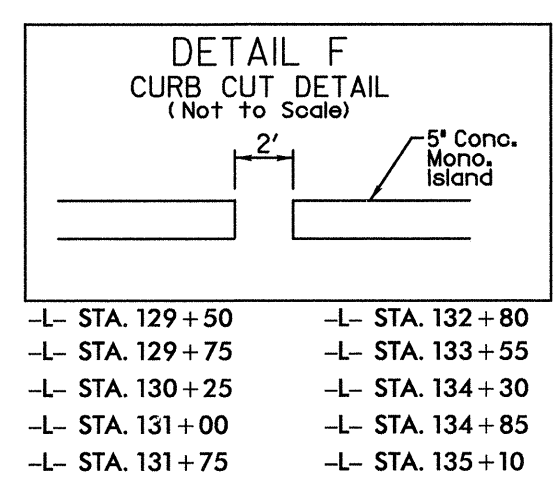
-L-
PI Sta 123+53.14
 $\Delta = 16' 44'' 19.7''$ (LT)
 $D = 4' 29'' 37.6''$
 $L = 372.49'$
 $T = 187.58'$
 $R = 1,275.00'$
SE = EXIST



MATCH TO SHEET EC-8
-L- STA. 125+00.00

MATCH TO SHEET EC-10
-L- STA. 138+00.00

-BL -102 133+66.30 PINC
(-L- 132+51.76 42.55' RT)

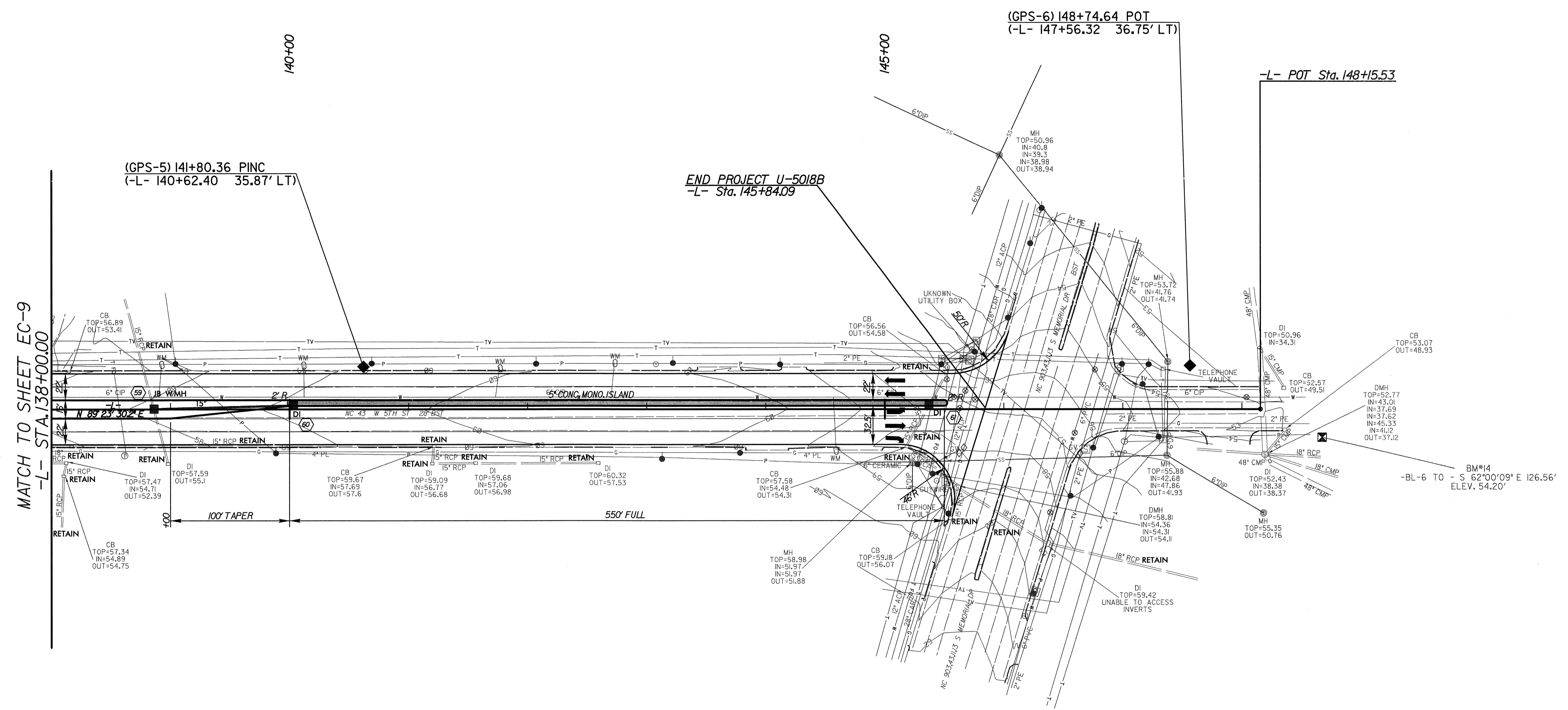


- L- STA. 129+50
- L- STA. 129+75
- L- STA. 130+25
- L- STA. 131+00
- L- STA. 131+75
- L- STA. 132+80
- L- STA. 133+55
- L- STA. 134+30
- L- STA. 134+85
- L- STA. 135+10

5/28/99
8/19/2008
R:\Projects\CADD\Erosion Control\U5018B\U5018B_EC.psh3.dgn
3:24:11 PM

NOTE:
PLACE TEMPORARY ROCK SEDIMENT DAMS TYPE - B
AND TEMPORARY ROCK SILT CHECKS TYPE - A AT
DRAINAGE OUTLETS.

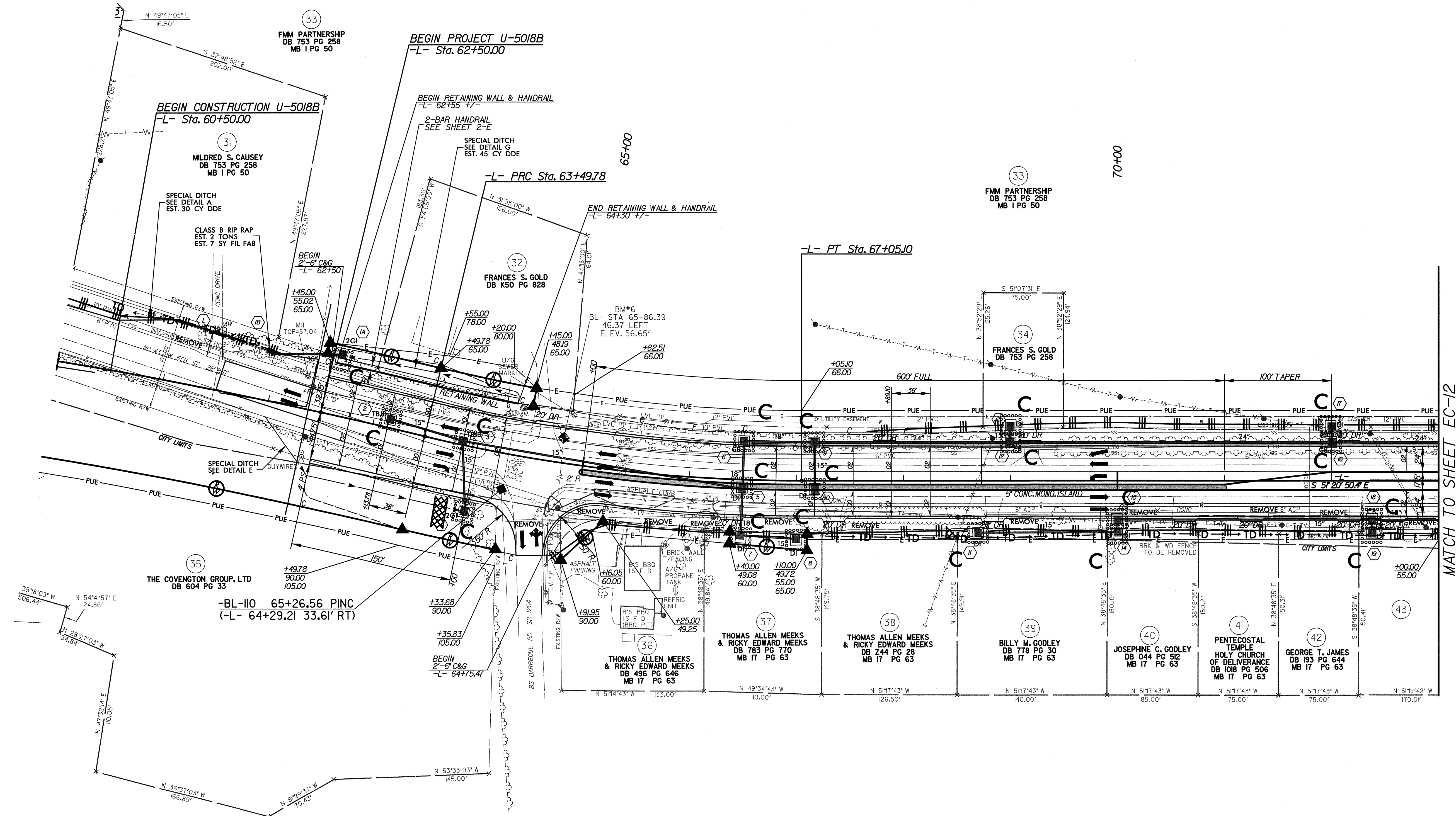
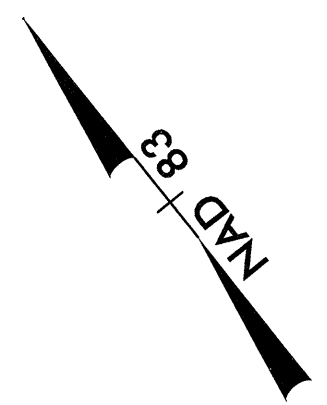
CLEARING AND GRUBBING
EROSION CONTROL FOR
CONSTRUCTION SHEET 10



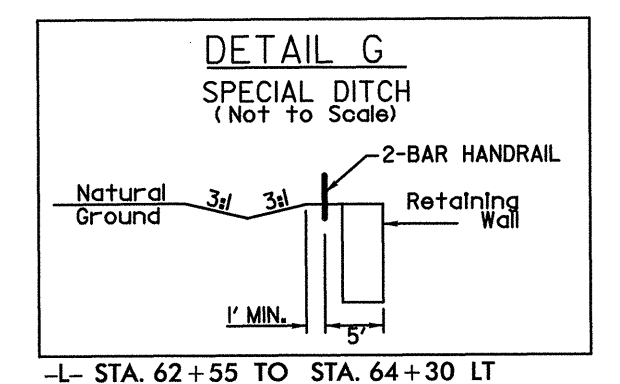
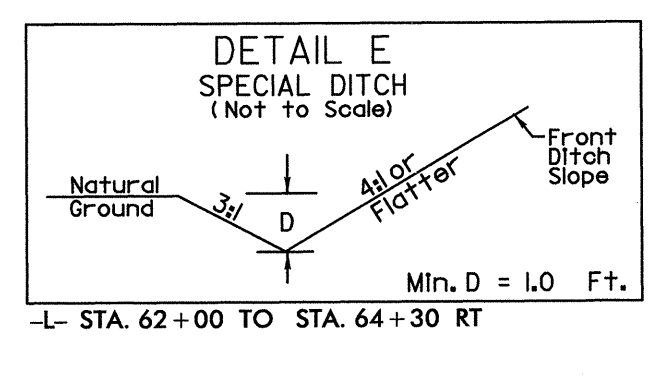
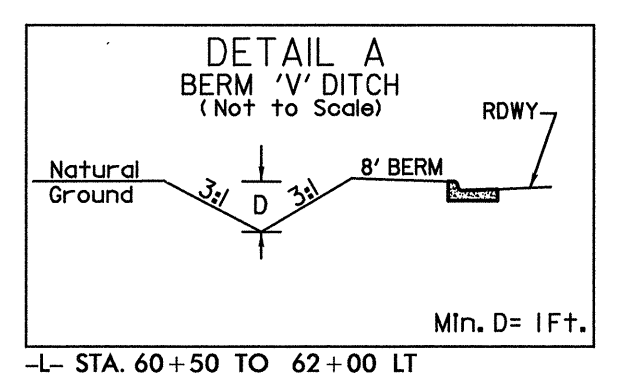
5/28/99

-L-
PI Sta 61+27.90 Δ = 5° 09' 00.9" (RT)
D = 1° 09' 35.4"
L = 444.05'
T = 222.17'
R = 4,940.00'
SE = 02'
RO = 72'

PI Sta 65+28.27 Δ = 13° 34' 19.5" (LT)
D = 3° 49' 11.0"
L = 355.32'
T = 178.49'
R = 1,500.00'
SE = 02'
RO = 72'

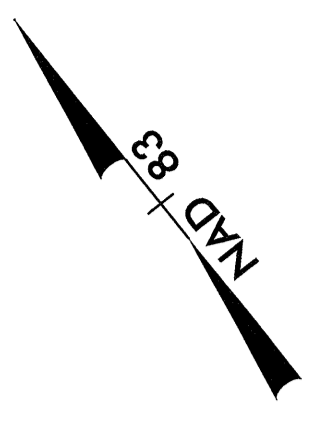


MATCH TO SHEET EC-12
-L- STA. 73+00.00



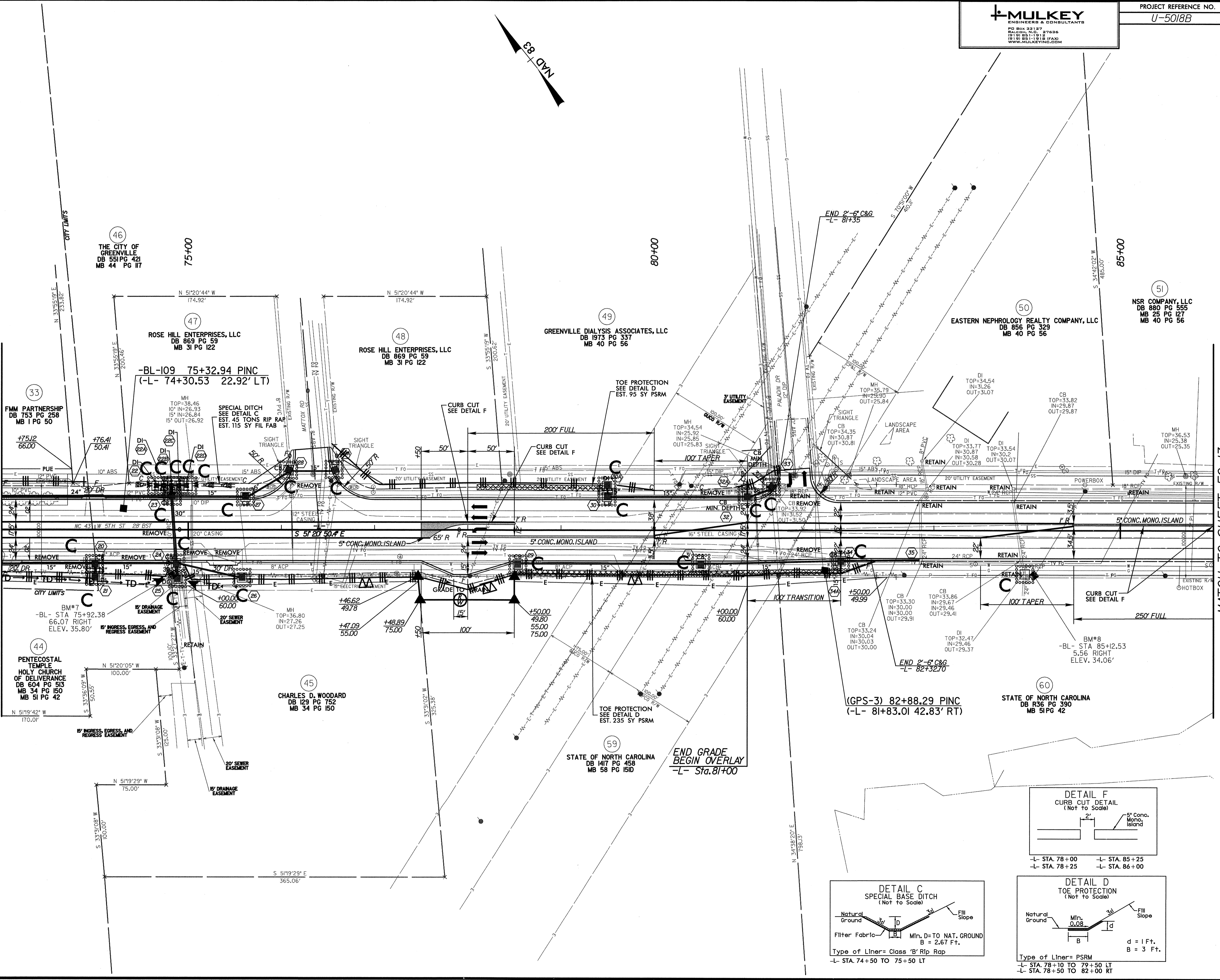
5/7/2009 10:56:56 AM
J:\os\CADD\Erosion Control\U5018B\U5018B_EC-psht1.dgn
3:33:56 PM

5/28/09



MATCH TO SHEET EC-11
-L- STA. 73+00.00

MATCH TO SHEET EC-13
-L- STA. 86+00.00



46 THE CITY OF GREENVILLE DB 551 PG 421 MB 44 PG 117

47 ROSE HILL ENTERPRISES, LLC DB 869 PG 59 MB 31 PG 122

48 ROSE HILL ENTERPRISES, LLC DB 869 PG 59 MB 31 PG 122

49 GREENVILLE DIALYSIS ASSOCIATES, LLC DB 1973 PG 337 MB 40 PG 56

50 EASTERN NEPHROLOGY REALTY COMPANY, LLC DB 856 PG 329 MB 40 PG 56

51 NSR COMPANY, LLC DB 880 PG 555 MB 25 PG 127 MB 40 PG 56

33 FMM PARTNERSHIP DB 753 PG 258 MB 1 PG 50

44 PENTECOSTAL TEMPLE HOLY CHURCH OF DELIVERANCE DB 604 PG 513 MB 34 PG 150 MB 51 PG 42

45 CHARLES D. WOODARD DB 129 PG 752 MB 34 PG 150

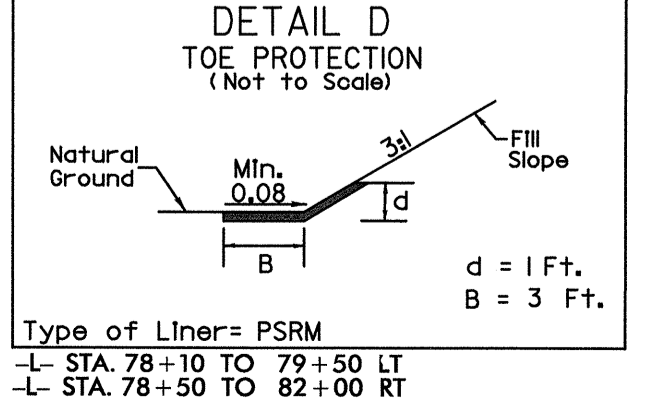
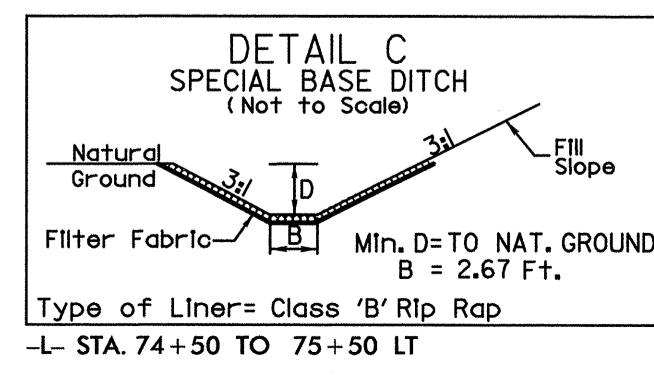
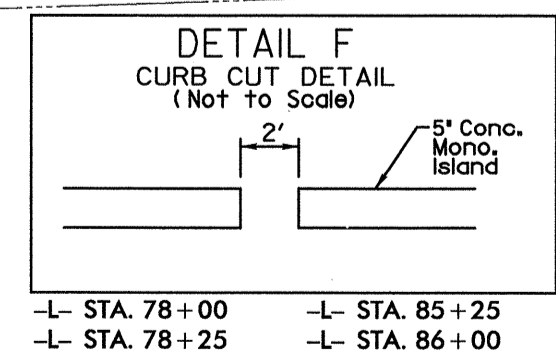
59 STATE OF NORTH CAROLINA DB 1417 PG 458 MB 58 PG 151D

60 STATE OF NORTH CAROLINA DB R56 PG 390 MB 51 PG 42

-BL-109 75+32.94 PINC (-L- 74+30.53 22.92' LT)

(GPS-3) 82+88.29 PINC (-L- 81+83.01 42.83' RT)

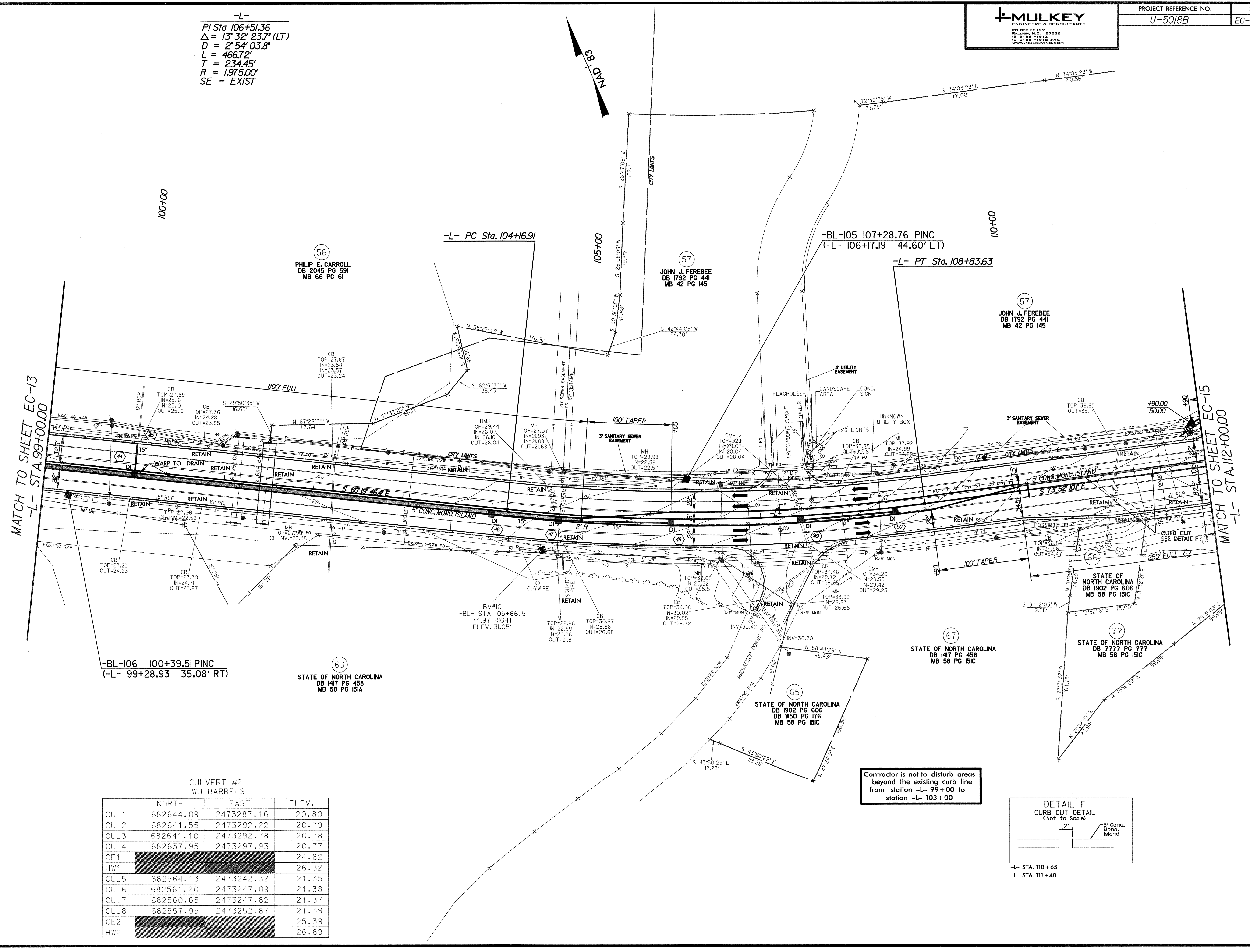
END GRADE BEGIN OVERLAY
-L- Sta. 81+00



5/7/2009 11:55:00 AM C:\Users\jca\Documents\Control\U5018B\U5018B_EC.psh12.dgn



-L-
PI Sta. 106+51.36
 $\Delta = 13^{\circ} 32' 23.7''$ (LT)
 $D = 2^{\circ} 54' 03.8''$
 $L = 466.72'$
 $T = 234.45'$
 $R = 1,975.00'$
SE = EXIST



MATCH TO SHEET EC-13
-L- STA. 99+00.00

MATCH TO SHEET EC-15
-L- STA. 112+00.00

-BL-106 100+39.51 PINC
(-L- 99+28.93 35.08' RT)

STATE OF NORTH CAROLINA
DB 1417 PG 458
MB 58 PG 151A

STATE OF NORTH CAROLINA
DB 1902 PG 606
DB 550 PG 176
MB 58 PG 151C

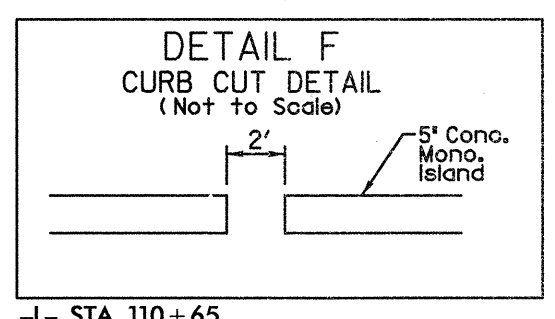
STATE OF NORTH CAROLINA
DB 1417 PG 458
MB 58 PG 151C

STATE OF NORTH CAROLINA
DB ??? PG ???
MB 58 PG 151C

CULVERT #2
TWO BARRELS

	NORTH	EAST	ELEV.
CUL1	682644.09	2473287.16	20.80
CUL2	682641.55	2473292.22	20.79
CUL3	682641.10	2473292.78	20.78
CUL4	682637.95	2473297.93	20.77
CE1			24.82
HW1			26.32
CUL5	682564.13	2473242.32	21.35
CUL6	682561.20	2473247.09	21.38
CUL7	682560.65	2473247.82	21.37
CUL8	682557.95	2473252.87	21.39
CE2			25.39
HW2			26.89

Contractor is not to disturb areas
beyond the existing curb line
from station -L- 99+00 to
station -L- 103+00

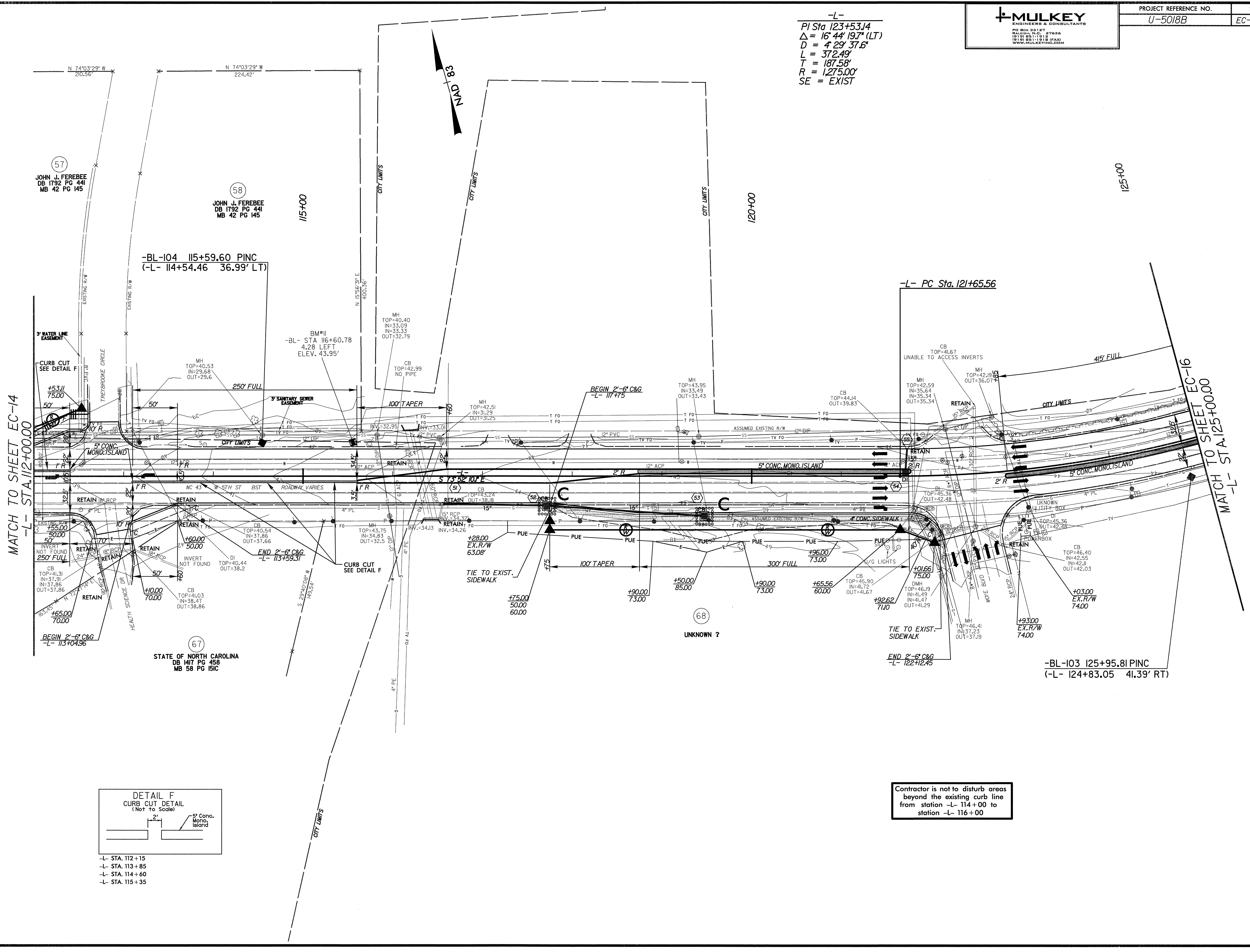


-L- STA. 110+65
-L- STA. 111+40

5/28/99
8/19/2008
R:\Projects\CADD\ER-osion_Contr\01\U5018B\U5018B_EC_EC.dgn
3:22:25 PM

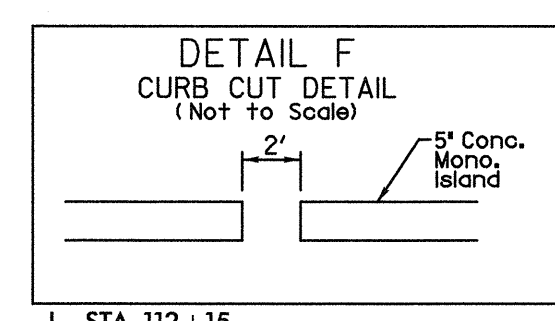


-L-
 PI Sta 123+53.14
 $\Delta = 16' 44" 19.7" (LT)$
 $D = 4' 29" 37.6"$
 $L = 372.49'$
 $T = 187.58'$
 $R = 1275.00'$
 SE = EXIST



MATCH TO SHEET EC-14
 -L- STA. 112+00.00

MATCH TO SHEET EC-16
 -L- STA. 125+00.00



- L- STA. 112+15
- L- STA. 113+85
- L- STA. 114+60
- L- STA. 115+35

Contractor is not to disturb areas beyond the existing curb line from station -L- 114+00 to station -L- 116+00

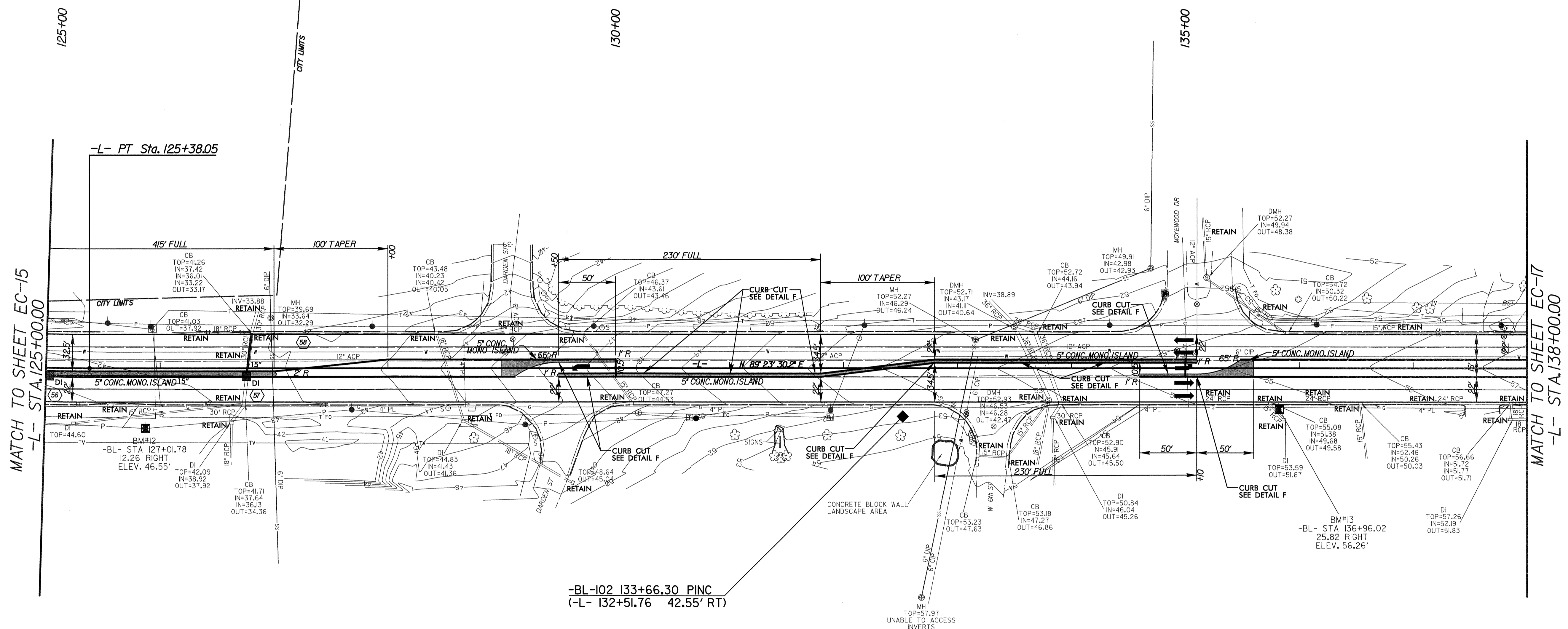
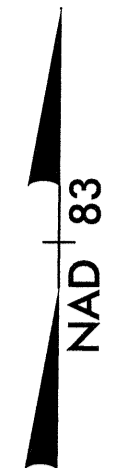
5/28/99
 8/19/2008
 R:\Projects\CADD\ER-oson Contr\105018B\U5018B_EC_psh15.dgn
 3:22:09 PM

5/28/99

MULKEY
ENGINEERS & CONSULTANTS
PO BOX 33127
RALEIGH, N.C. 27636
(919) 851-1912
(919) 851-1918 FAX
WWW.MULKEYINC.COM

PROJECT REFERENCE NO.	SHEET NO.
U-5018B	EC-16/CONST.9

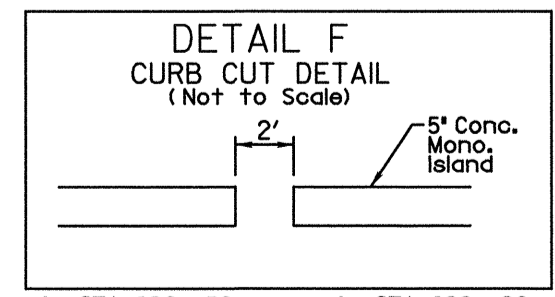
-L-
PI Sta 123+53.14
 $\Delta = 16' 44" 19.7" (LT)$
D = 4' 29' 37.6"
L = 372.49'
T = 187.58'
R = 1,275.00'
SE = EXIST



MATCH TO SHEET EC-15
-L- STA. 125+00.00

MATCH TO SHEET EC-17
-L- STA. 138+00.00

-BL-102 133+66.30 PINC
(-L- 132+51.76 42.55' RT)



- L- STA. 129+50
- L- STA. 129+75
- L- STA. 130+25
- L- STA. 131+00
- L- STA. 131+75
- L- STA. 132+80
- L- STA. 133+55
- L- STA. 134+30
- L- STA. 134+85
- L- STA. 135+10

8/19/2008
C:\Users\CADD\ERession\Contr\01\5018B\U5018_EC.dwg
5/21/08 PM

