

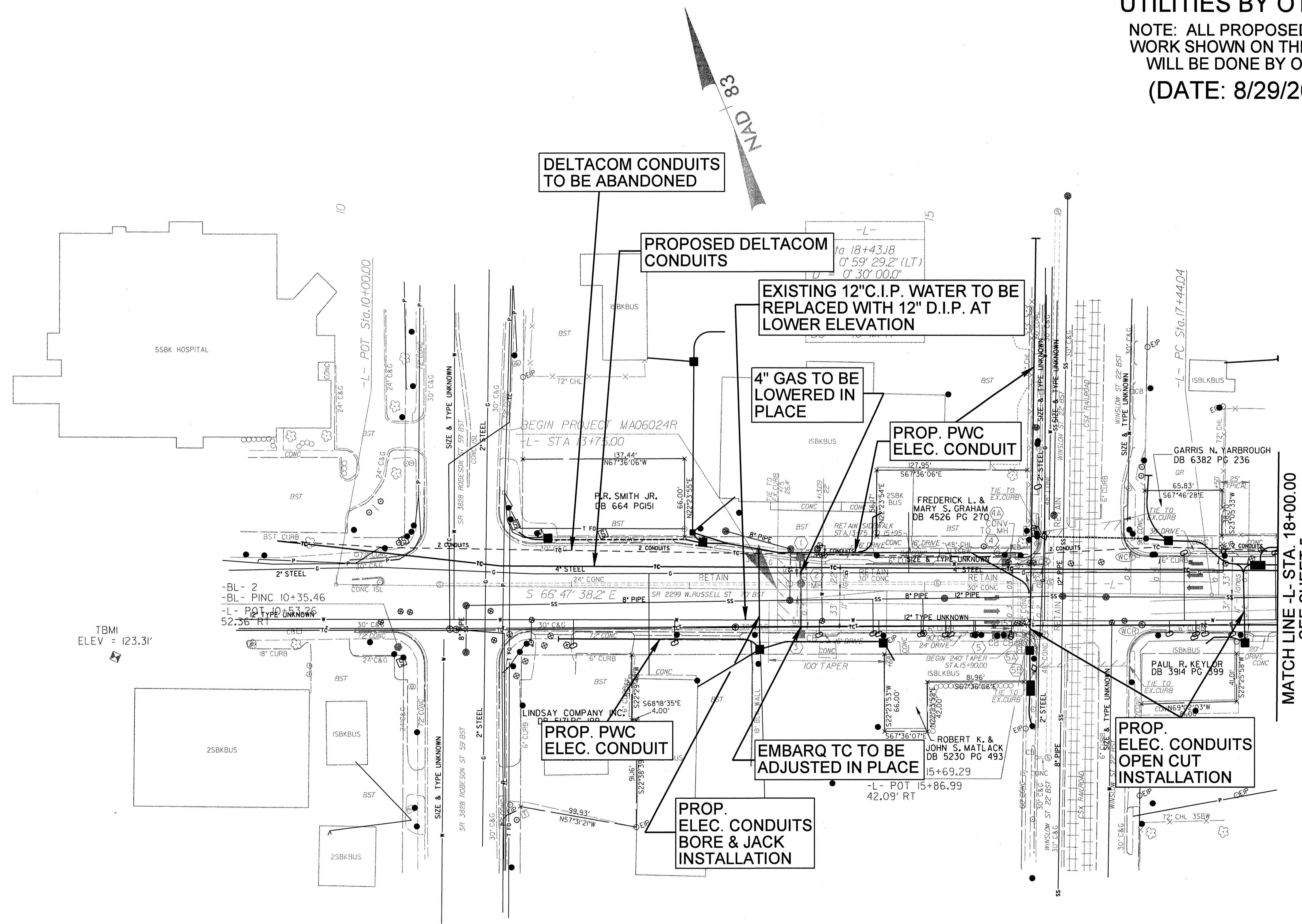
# UTILITIES BY OTHERS

NOTE: ALL PROPOSED UTILITY WORK SHOWN ON THIS SHEET WILL BE DONE BY OTHERS  
(DATE: 8/29/2008)

8/17/99

REVISIONS

8/29/2008 M:\projects\2006\06075\_NCDOT\_Div\001-Russell\Street\Roadway\Proj\Russell\st\_rdy\_s04.dgn



DELTA COM CONDUITS TO BE ABANDONED

PROPOSED DELTA COM CONDUITS

EXISTING 12" C.I.P. WATER TO BE REPLACED WITH 12" D.I.P. AT LOWER ELEVATION

4" GAS TO BE LOWERED IN PLACE

PROP. PWC ELEC. CONDUIT

PROP. PWC ELEC. CONDUIT

EMBARQ TC TO BE ADJUSTED IN PLACE

PROP. ELEC. CONDUITS BORE & JACK INSTALLATION

PROP. ELEC. CONDUITS OPEN CUT INSTALLATION

MATCH LINE - L- STA. 18+00.00  
SEE SHEET 5

**DATUM DESCRIPTION**  
THE LOCALIZED COORDINATE SYSTEM DEVELOPED FOR THIS PROJECT IS BASED ON THE STATE PLANE COORDINATES ESTABLISHED BY OTHERS FOR MONUMENT "GPS 2" WITH NAD 83 STATE PLANE GRID COORDINATES OF NORTHING: 474392.6929(11) EASTING: 2033526.1659(11) THE AVERAGE COMBINED GRID FACTOR USED ON THIS PROJECT (GROUND TO GRID) IS: 0.99997391 THE N.C. LAMBERT GRID BEARING AND LOCALIZED HORIZONTAL GROUND DISTANCE FROM "GPS 2" TO L- STATION 10+00.00 IS 746843 FT BEARING N 22° 17' 01.79" W ALL LINEAR DIMENSIONS ARE LOCALIZED HORIZONTAL DISTANCES VERTICAL DATUM USED IS NAVD 80

THE UTILITY LOCATIONS SHOWN WERE PROVIDED BY THE NCDOT (LOCATION & SURVEY) AND BY THE UTILITY COMPANIES LISTED BELOW:  
PWC (WATER, SEWER & POWER)  
PIEDMONT NATURAL GAS  
DELTA COM  
EMBARQ

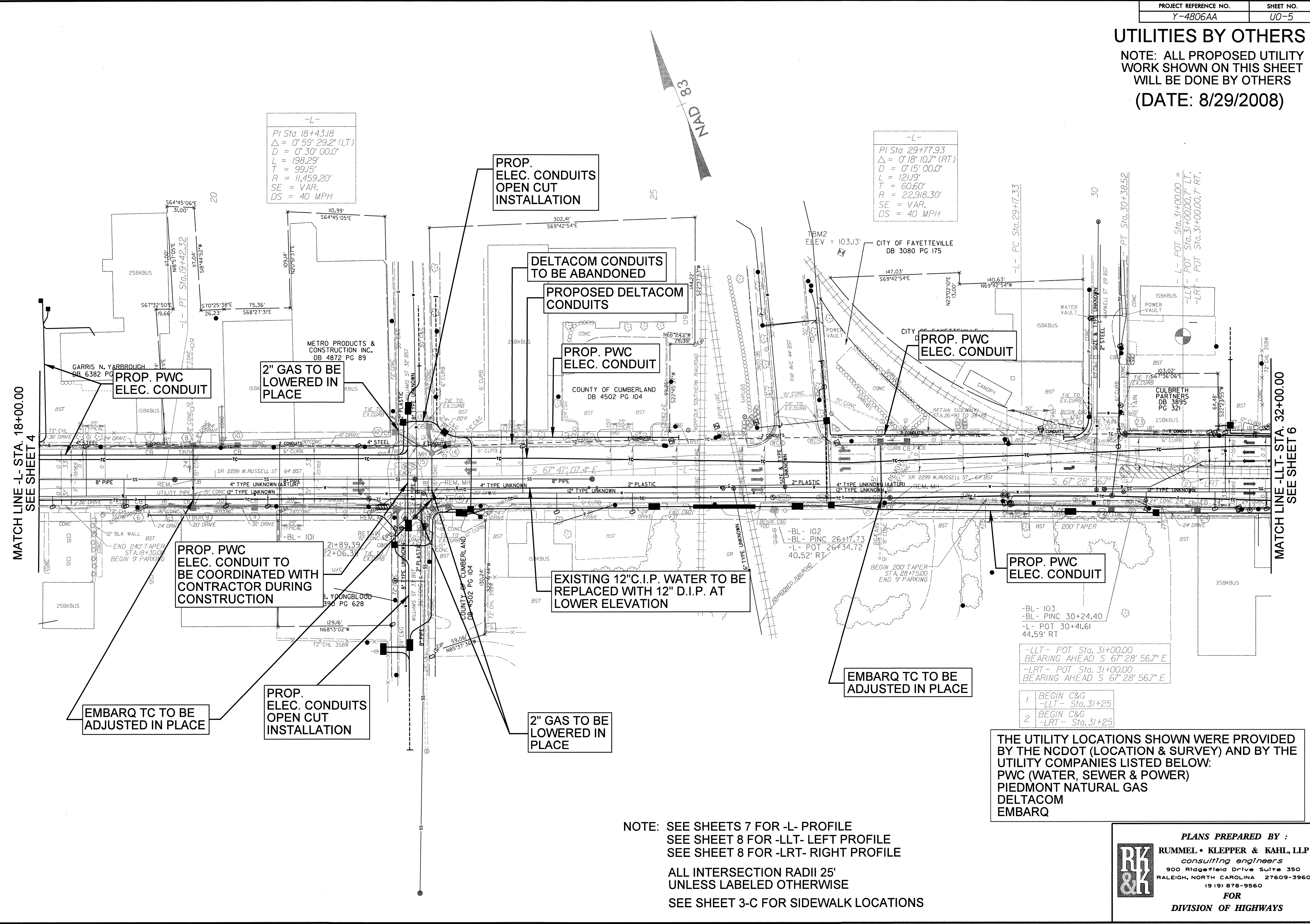
NOTE: SEE SHEETS 7 FOR -L- PROFILE  
ALL INTERSECTION RADII 25'  
UNLESS LABELED OTHERWISE  
SEE SHEET 3-C FOR SIDEWALK LOCATIONS

**PLANS PREPARED BY :**  
**RK & K**  
RUMMEL • KLEPPER & KAHL, LLP  
consulting engineers  
900 Ridgefield Drive Suite 350  
RALEIGH, NORTH CAROLINA 27609-3960  
(919) 878-9560  
FOR  
DIVISION OF HIGHWAYS



**UTILITIES BY OTHERS**  
 NOTE: ALL PROPOSED UTILITY WORK SHOWN ON THIS SHEET WILL BE DONE BY OTHERS  
 (DATE: 8/29/2008)

8/17/09  
 8/29/2008  
 M:\projects\2006\06075\_NCDOT\Projects\Roadway\Pro\Russell\Street\Roadway\Pro\Russell\Street\rdy-s05.dgn  
 REVISIONS



-L-  
 PI Sta 18+43.18  
 $\Delta = 0^\circ 59' 29.2''$  (LT)  
 $D = 0^\circ 30' 00.0''$   
 $L = 198.29'$   
 $T = 99.15'$   
 $R = 11,459.20'$   
 $SE = VAR.$   
 $DS = 40$  MPH

-L-  
 PI Sta 29+77.93  
 $\Delta = 0^\circ 18' 10.7''$  (RT)  
 $D = 0^\circ 15' 00.0''$   
 $L = 121.19'$   
 $T = 60.60'$   
 $R = 22,918.30'$   
 $SE = VAR.$   
 $DS = 40$  MPH


MATCH LINE -L- STA. 18+00.00  
 SEE SHEET 4

MATCH LINE -LLT- STA. 32+00.00  
 SEE SHEET 6

NOTE: SEE SHEETS 7 FOR -L- PROFILE  
 SEE SHEET 8 FOR -LLT- LEFT PROFILE  
 SEE SHEET 8 FOR -LRT- RIGHT PROFILE  
 ALL INTERSECTION RADII 25'  
 UNLESS LABELED OTHERWISE  
 SEE SHEET 3-C FOR SIDEWALK LOCATIONS

-BL- 103  
 -BL- PINC 30+24.40  
 -L- POT 30+41.61  
 44.59' RT  
 -LLT- POT Sta. 31+00.00  
 BEARING AHEAD S 67° 28' 56.7" E  
 -LRT- POT Sta. 31+00.00  
 BEARING AHEAD S 67° 28' 56.7" E  
 1 BEGIN C&G  
 -LLT- Sta. 31+25  
 2 BEGIN C&G  
 -LRT- Sta. 31+25

THE UTILITY LOCATIONS SHOWN WERE PROVIDED BY THE NCDOT (LOCATION & SURVEY) AND BY THE UTILITY COMPANIES LISTED BELOW:  
 PWC (WATER, SEWER & POWER)  
 PIEDMONT NATURAL GAS  
 DELTACOM  
 EMBARQ

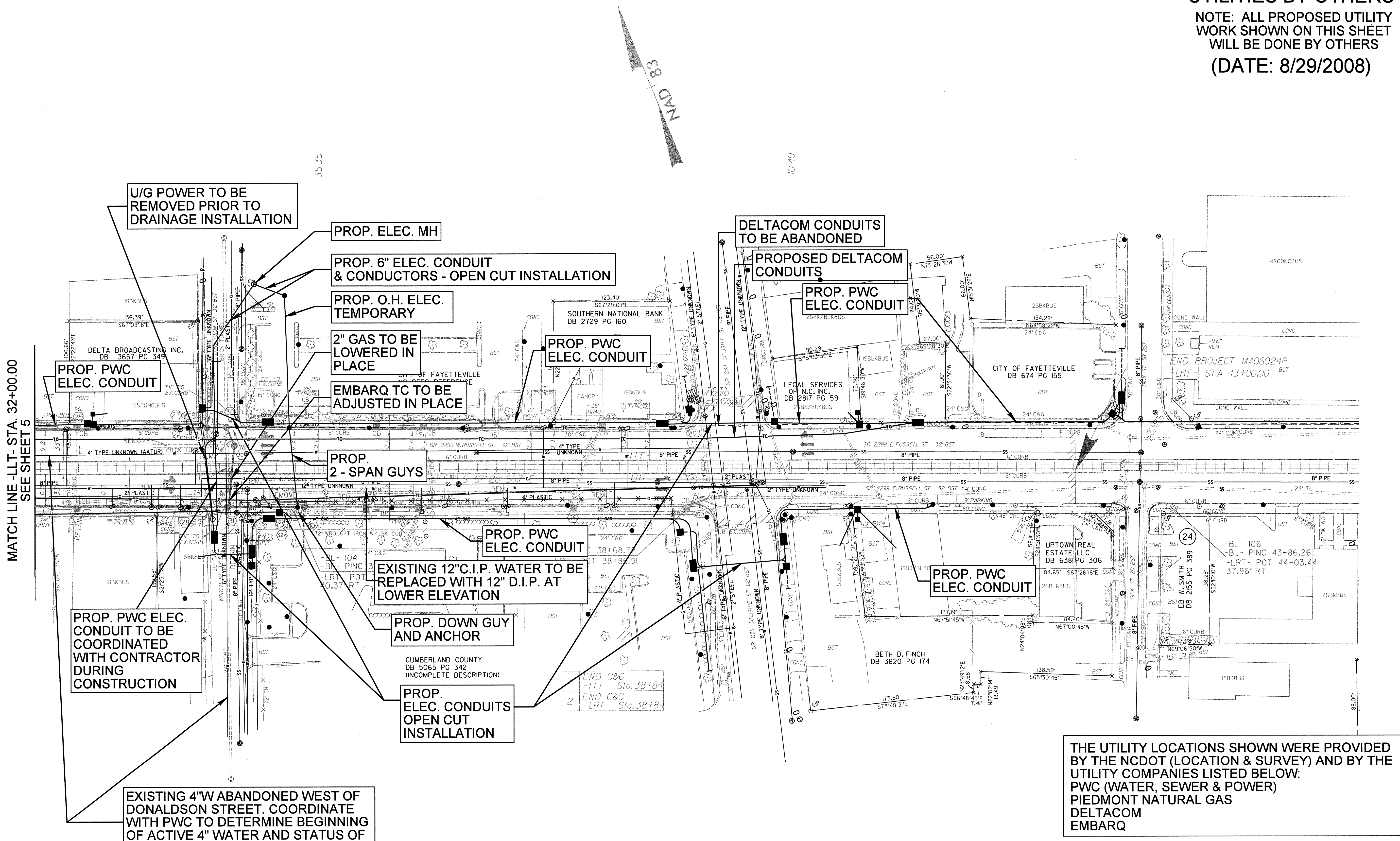
PLANS PREPARED BY :  
 RUMMEL • KLEPPER & KAHL, LLP  
 consulting engineers  
 900 Ridgefield Drive Suite 350  
 RALEIGH, NORTH CAROLINA 27609-3960  
 (919) 878-9560  
 FOR  
 DIVISION OF HIGHWAYS



**UTILITIES BY OTHERS**  
 NOTE: ALL PROPOSED UTILITY WORK SHOWN ON THIS SHEET WILL BE DONE BY OTHERS  
 (DATE: 8/29/2008)


8/17/99  
 8/29/2008  
 M:\projects\2006\06075.NC DOT.Dwg\01-Russell Street\Z-misc\NC DOT Provided Data\Russell\_Street\Roadway\Proj\Russell.st.rdy.s06.dgn

MATCH LINE -LLT- STA. 32+00.00  
 SEE SHEET 5



THE UTILITY LOCATIONS SHOWN WERE PROVIDED BY THE NCDOT (LOCATION & SURVEY) AND BY THE UTILITY COMPANIES LISTED BELOW:  
 PWC (WATER, SEWER & POWER)  
 PIEDMONT NATURAL GAS  
 DELTACOM  
 EMBARQ

NOTE: SEE SHEET 8 FOR -LLT- LEFT PROFILE  
 SEE SHEET 8 FOR -LRT- RIGHT PROFILE  
 ALL INTERSECTION RADII 25'  
 UNLESS LABELED OTHERWISE  
 SEE SHEET 3-C FOR SIDEWALK LOCATIONS

**PLANS PREPARED BY :**  
 RUMMEL • KLEPPER & KAHL, LLP  
 consulting engineers  
 900 Ridgefield Drive Suite 350  
 RALEIGH, NORTH CAROLINA 27609-3960  
 (919) 878-9560  
 FOR  
 DIVISION OF HIGHWAYS