

TIP PROJECT: R-4002

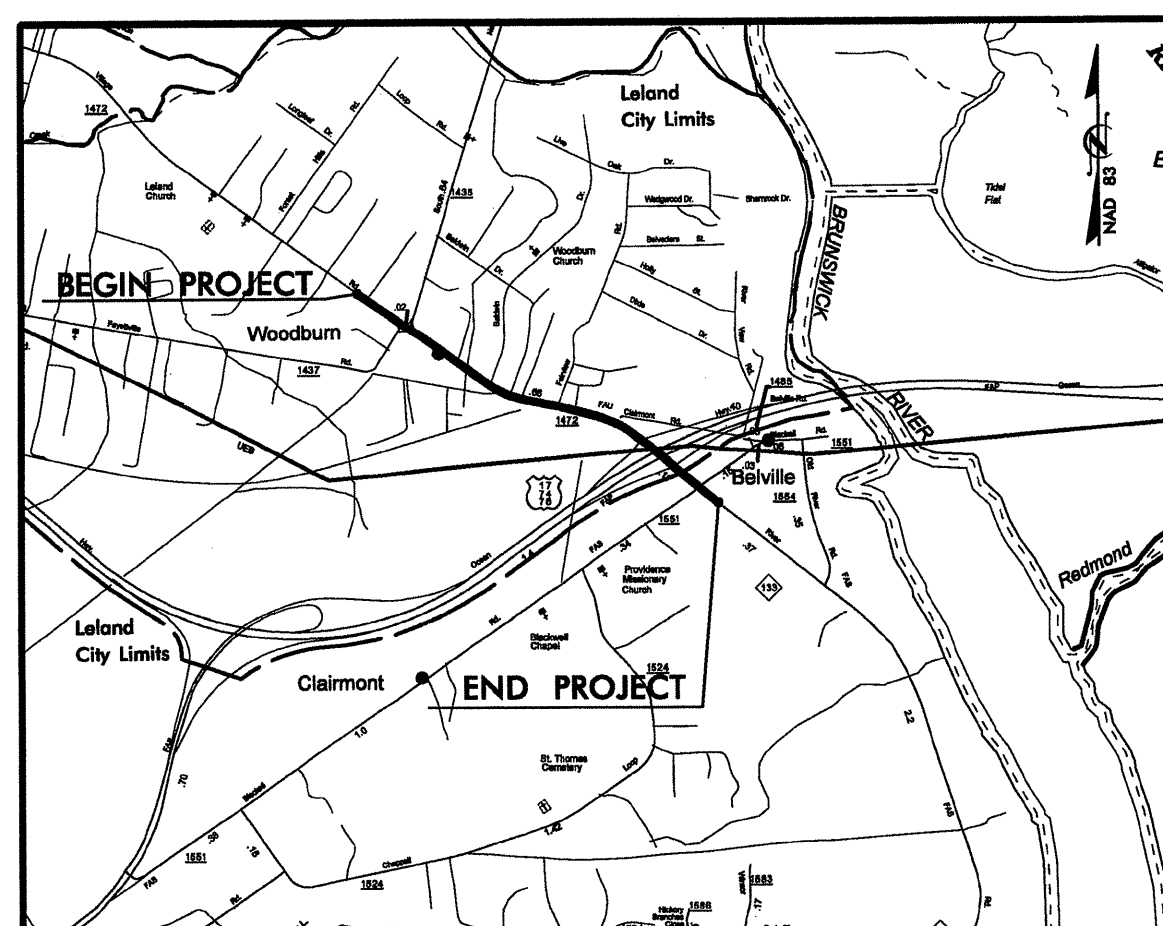
CONTRACT:

STATE OF NORTH CAROLINA  
DIVISION OF HIGHWAYS

**BRUNSWICK COUNTY**

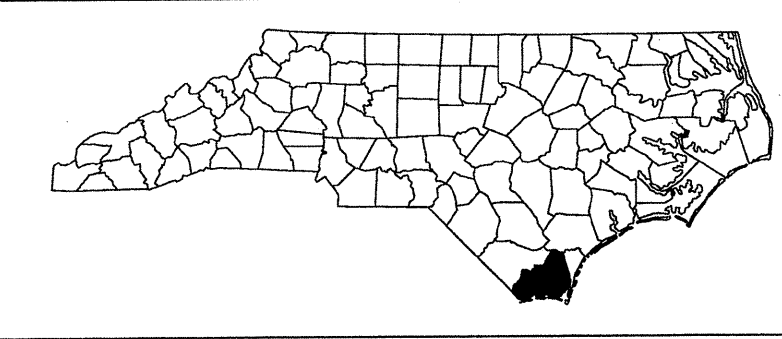
LOCATION: LELAND-SR 1472 (VILLAGE DRIVE) WIDENING  
FROM WEST OF SR 1437 (OLD FAYETTEVILLE  
ROAD /SR 1435 (NAVASSA ROAD) TO THE US 17  
NORTHBOUND INTERCHANGE RAMPS

TYPE OF WORK: UTILITIES RELOCATION

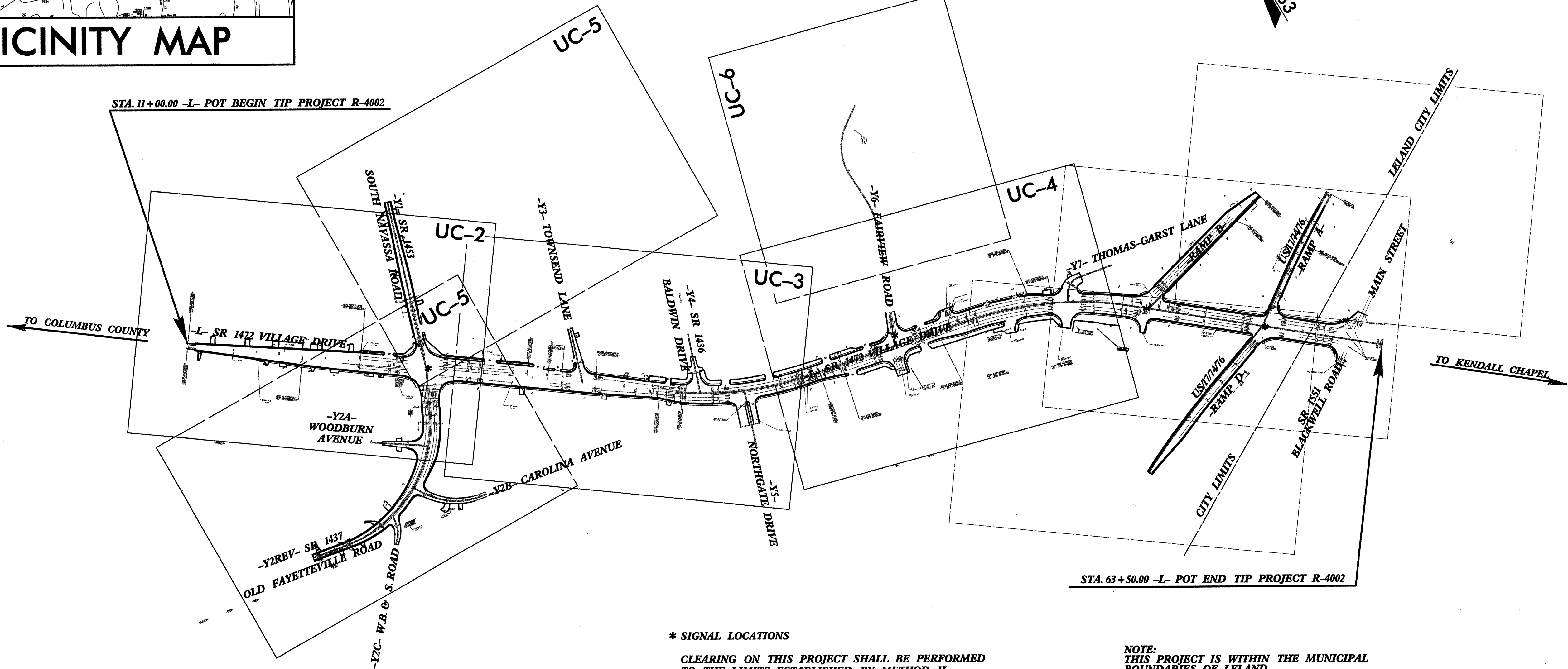
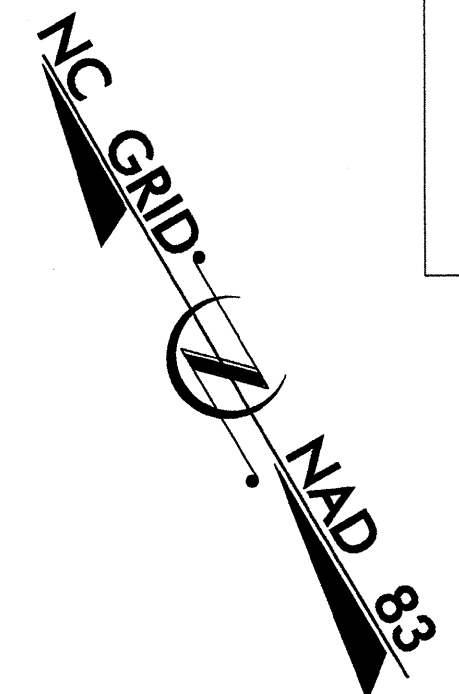


VICINITY MAP

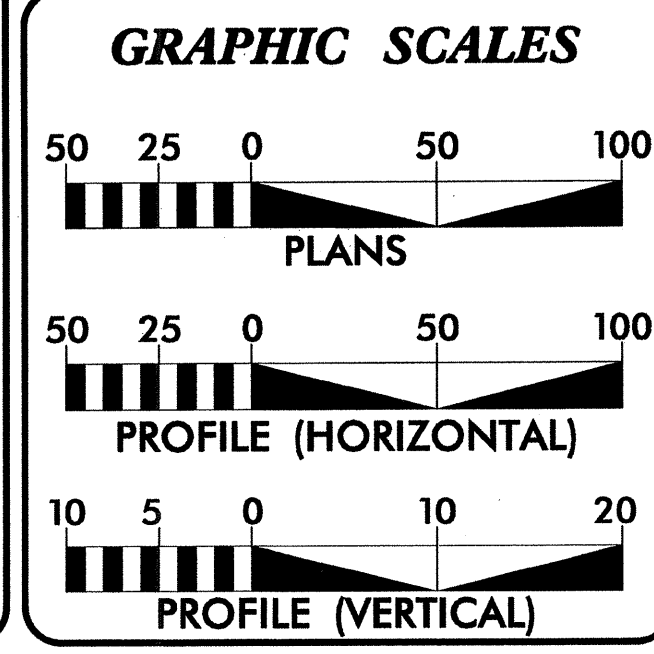
T.I.P. NO.	SHEET NO.
R-4002	UC-1



FINAL DRAWINGS



\* SIGNAL LOCATIONS  
CLEARING ON THIS PROJECT SHALL BE PERFORMED TO THE LIMITS ESTABLISHED BY METHOD II  
NOTE: THIS PROJECT IS WITHIN THE MUNICIPAL BOUNDARIES OF LELAND.



INDEX OF SHEETS

SHEET NO.	DESCRIPTION
UC-1	TITLE SHEET
UC-2 thru UC-6	UTILITY CONSTRUCTION PLAN SHEET(S)
UC-7	PROFILE SHEET(S)
UC-8 thru UC-9	DETAIL SHEET(S)

- WATER AND SEWER OWNERS ON PROJECT
- (1) TOWN OF LELAND (WATER AND SEWER)
  - (2) BRUNSWICK COUNTY (SEWER)  
NO KNOWN UTILITY CONFLICTS
  - (3) NORTH BRUNSWICK SANITARY DISTRICT (WATER AND SEWER)

**EarthTech**  
A Tyco International Ltd. Company  
701 Corporate Center Drive, Suite 475  
Raleigh, NC 27607  
(919) 854-6200 - (919) 854-4259 (FAX)

FOR:  
DIVISION OF HIGHWAYS  
PROJECT SERVICES  
UTILITY SECTION  
1591 MAIL SERVICES CENTER  
RALEIGH, NC 27699-1591  
PHONE (919) 250-4128  
FAX (919) 250-4119

Roger Worthington, P.E. UTILITIES SECTION ENGINEER  
James S. McKee, P.E. UTILITIES SQUAD LEADER PROJECT ENGINEER  
Jamshid Hafshejani UTILITIES PROJECT DESIGNER

07/13/2008

NC GRID  
NAD 83

ALL SEWER LINES OWNED BY THE  
TOWN OF LELAND OR BRUNSWICK  
COUNTY. ALL WATER LINES OWNED BY  
NORTH BRUNSWICK SANITARY DISTRICT.

PROJECT REFERENCE NO. R-4002	SHEET NO. UC-2
SCALE: 25 0 50	

UTILITY CONSTRUCTION

PROP. 60.94' -  
8" SANITARY GRAVITY  
SEWER (LINE A)

MATCHLINE -Y1- STA. 14+50  
SEE SHEET NO. UC-5

EXIST. MH A1 STA. 0+00.00  
LINE A  
PROP. 1 - REMOVE UTILITY MANHOLE  
36.47' RT. OF -Y1- STA. 15+39.06

PROP. 1 - 4' DIA.  
UTILITY MANHOLE A2  
STA. 0+60.94, LINE A  
36.53' RT. OF -Y1- STA. 16+00.00

PROP. 52' -  
6" WATER LINE

PROP. 2 - RELOCATE  
WATER METER

PROP. 2 - RELOCATE  
WATER METER

PROP. 2 - 45  
DEGREE BENDS

PROP. 2 - 45  
DEGREE BENDS

PROP. 2 - 45  
DEGREE BENDS

PROP. 1 - RELOCATE  
FIRE HYDRANT

PROP. 102' -  
8" WATER LINE

PROP. 1 - RELOCATE  
WATER METER

PROP. 1 - RELOCATE  
WATER METER

PROP. 1 - RELOCATE  
FIRE HYDRANT

PROP. 1 - RELOCATE  
WATER METER

PROP. 102' -  
8" WATER LINE

PROP. 1 - RELOCATE  
FIRE HYDRANT

PROP. 2 - 45  
DEGREE BENDS

PROP. 2 - 45  
DEGREE BENDS

BEGIN STATE PROJECT R-4002  
-L- POT 11+00.00

NOTE:  
SEE DETAILS ON SHEET UC-9  
TYP. FOR USE ON ALL WATER MAIN  
RELOCATIONS AROUND STORM  
DRAIN PIPES.

MATCHLINE -Y2REV- STA. 18+00  
SEE SHEET NO. UC-5

MATCHLINE -L- STA. 24+75 SEE SHEET NO. UC-3

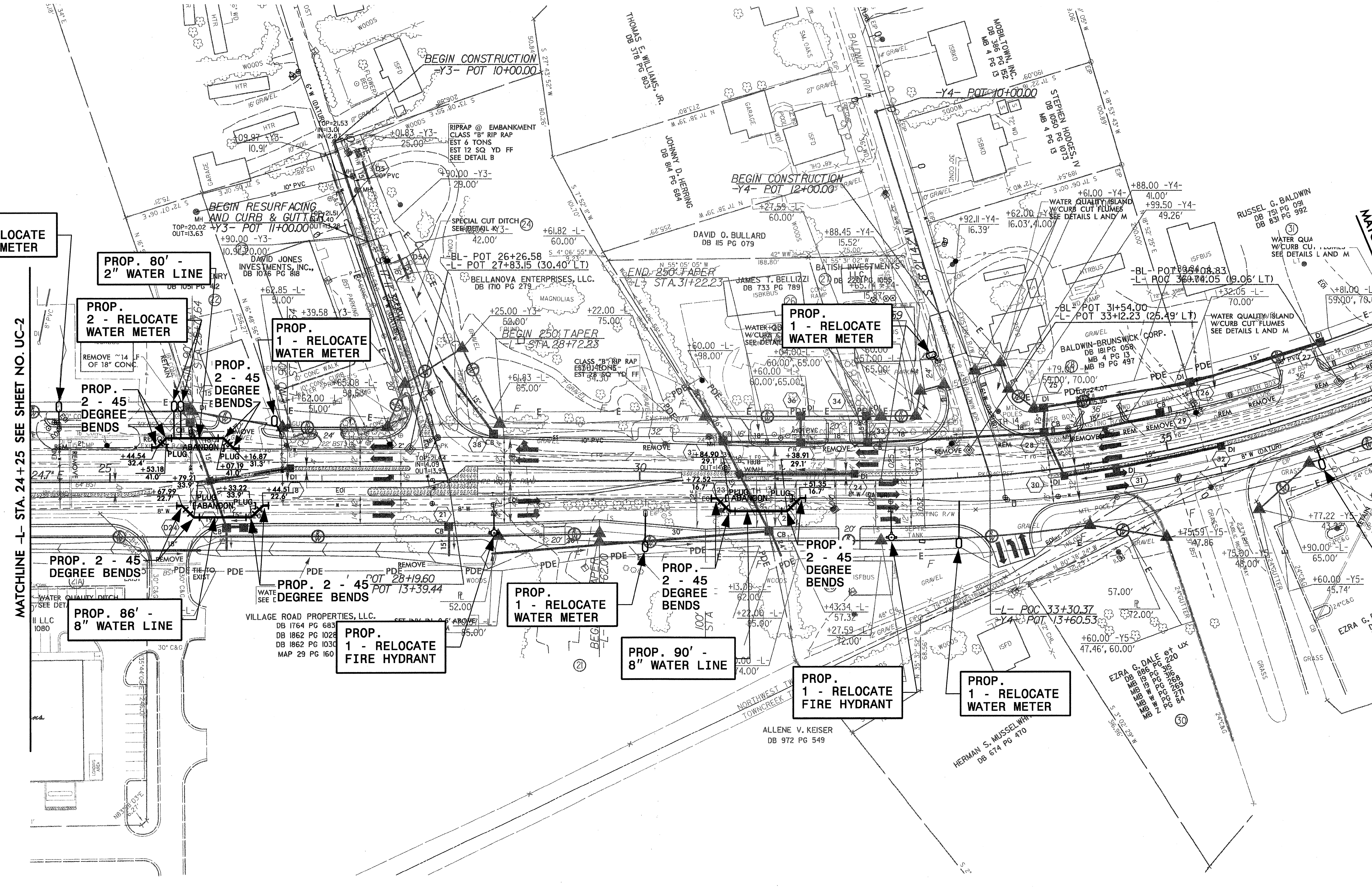
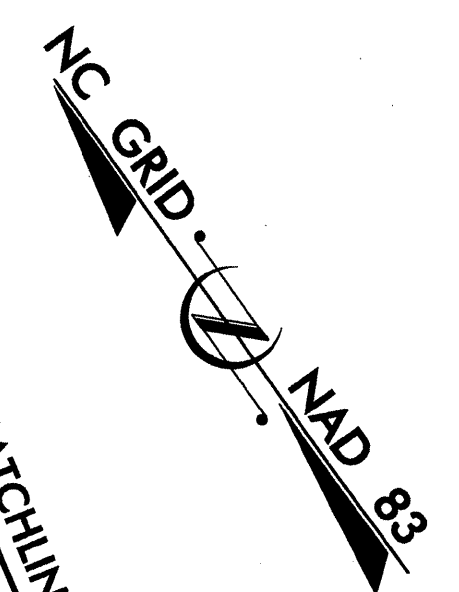
Prepared by:

EarthTech  
A Tyco International Ltd. Company  
701 Corporate Center Drive, Suite 475  
Raleigh, NC 27607  
(919) 854-6200 - (919) 854-6259(fax)

10/13/2008

ALL SEWER LINES OWNED BY THE TOWN OF LELAND OR BRUNSWICK COUNTY. ALL WATER LINES OWNED BY NORTH BRUNSWICK SANITARY DISTRICT.

PROJECT REFERENCE NO. R-4002	SHEET NO. UC-3
SCALE: 25 0 50	
<p>UTILITY CONSTRUCTION</p>	



PROP. 1 - RELOCATE WATER METER

PROP. 80' - 2" WATER LINE

PROP. 2 - RELOCATE WATER METER

PROP. 1 - RELOCATE WATER METER

PROP. 2 - 45 DEGREE BENDS

PROP. 1 - RELOCATE WATER METER

MATCHLINE - L - STA. 24 + 25 SEE SHEET NO. UC-2

PROP. 2 - 45 DEGREE BENDS

PROP. 86' - 8" WATER LINE

PROP. 2 - 45 DEGREE BENDS

PROP. 1 - RELOCATE FIRE HYDRANT

PROP. 1 - RELOCATE WATER METER

PROP. 90' - 8" WATER LINE

PROP. 2 - 45 DEGREE BENDS

PROP. 1 - RELOCATE FIRE HYDRANT

PROP. 1 - RELOCATE WATER METER

PROP. 1 - RELOCATE FIRE HYDRANT

PROP. 1 - RELOCATE WATER METER

MATCHLINE - L - STA. 37 + 50 SEE SHEET NO. UC-4

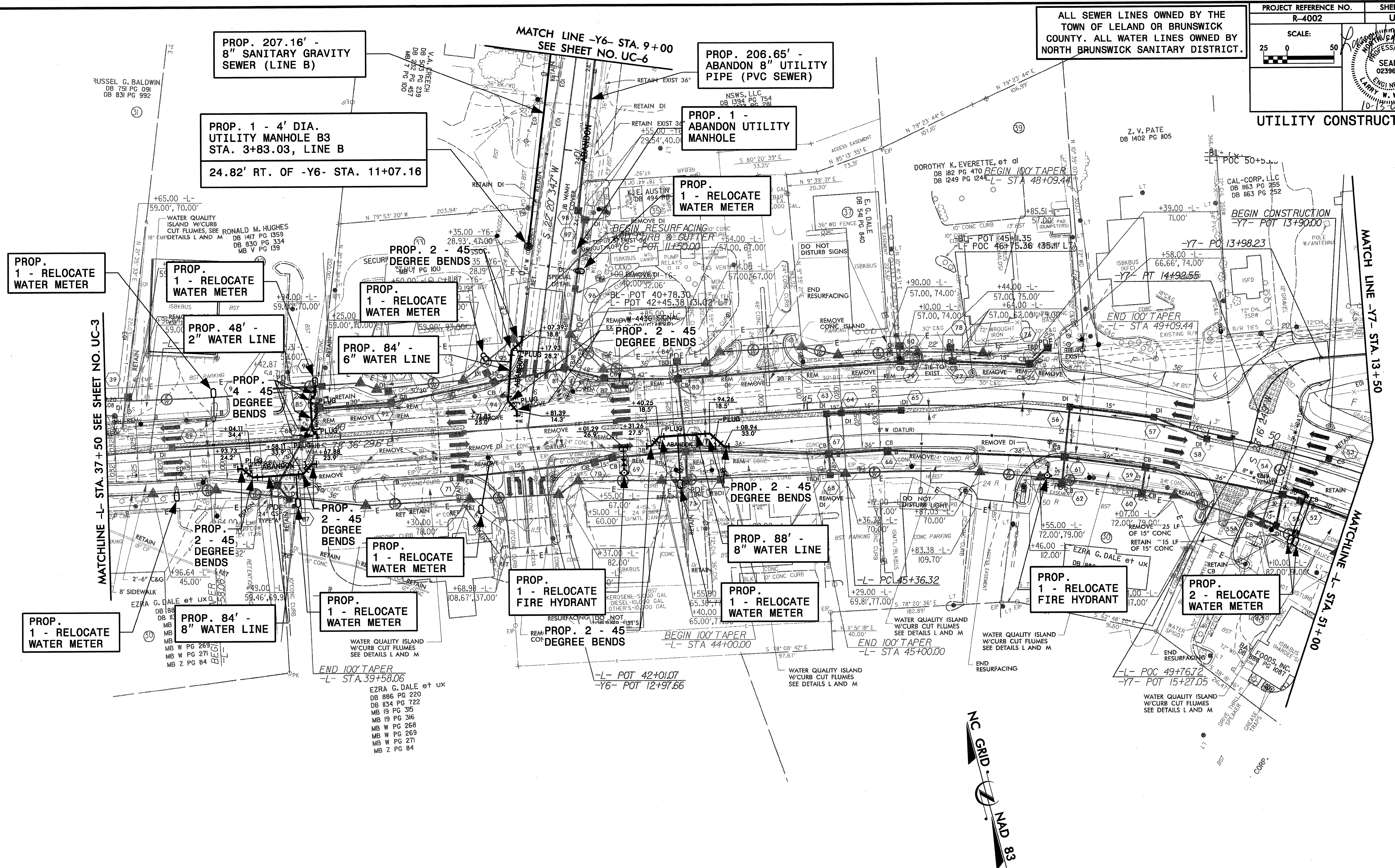
\*\*\*\*\*SYTIME\*\*\*\*\*  
ID: 13/2008

Prepared by:

A Tyco International Ltd. Company  
701 Corporate Center Drive, Suite 475  
Raleigh, NC 27607  
(919) 854-6200 - (919) 854-6259(fax)

ALL SEWER LINES OWNED BY THE TOWN OF LELAND OR BRUNSWICK COUNTY. ALL WATER LINES OWNED BY NORTH BRUNSWICK SANITARY DISTRICT.

UTILITY CONSTRUCTION



PROP. 207.16' - 8" SANITARY GRAVITY SEWER (LINE B)

PROP. 1 - 4' DIA. UTILITY MANHOLE B3 STA. 3+83.03, LINE B  
24.82' RT. OF -Y6- STA. 11+07.16

PROP. 206.65' - ABANDON 8" UTILITY PIPE (PVC SEWER)

PROP. 1 - ABANDON UTILITY MANHOLE

PROP. 1 - RELOCATE WATER METER

PROP. 1 - RELOCATE WATER METER

PROP. 1 - RELOCATE WATER METER

PROP. 1 - RELOCATE WATER METER

PROP. 48' - 2" WATER LINE

PROP. 84' - 6" WATER LINE

PROP. 2 - 45 DEGREE BENDS

MATCHLINE -L- STA. 37+50 SEE SHEET NO. UC-3

PROP. 4 - 45 DEGREE BENDS

PROP. 2 - 45 DEGREE BENDS

PROP. 1 - RELOCATE WATER METER

PROP. 2 - 45 DEGREE BENDS

PROP. 88' - 8" WATER LINE

PROP. 1 - RELOCATE WATER METER

PROP. 1 - RELOCATE FIRE HYDRANT

PROP. 2 - 45 DEGREE BENDS

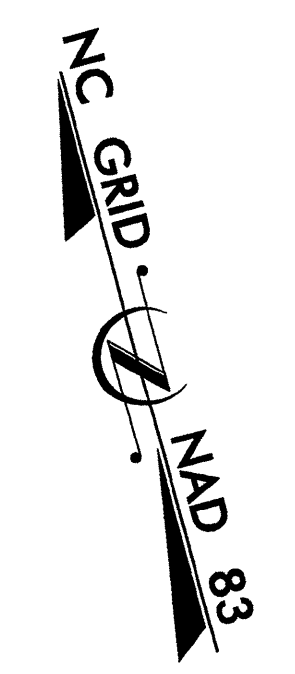
PROP. 1 - RELOCATE FIRE HYDRANT

PROP. 2 - RELOCATE WATER METER

PROP. 1 - RELOCATE WATER METER

PROP. 84' - 8" WATER LINE

PROP. 1 - RELOCATE WATER METER



RUSSEL G. BALDWIN  
DB 751 PG 091  
DB 831 PG 992

WATER QUALITY ISLAND W/CURB CUT FLUMES, SEE RONALD M. HUGHES DB 1417 PG 1359 DB 830 PG 334 MB V PG 139

WATER QUALITY ISLAND W/CURB CUT FLUMES SEE DETAILS L AND M

RESURFACING (DO NOT DISTURB SIGN)

WATER QUALITY ISLAND W/CURB CUT FLUMES SEE DETAILS L AND M

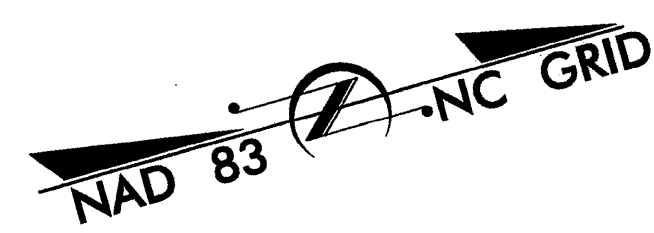
WATER QUALITY ISLAND W/CURB CUT FLUMES SEE DETAILS L AND M

WATER QUALITY ISLAND W/CURB CUT FLUMES SEE DETAILS L AND M

07/13/2008

ALL SEWER LINES OWNED BY THE TOWN OF LELAND OR BRUNSWICK COUNTY. ALL WATER LINES OWNED BY NORTH BRUNSWICK SANITARY DISTRICT.

PROJECT REFERENCE NO. R-4002	SHEET NO. UC-5
SCALE: 25 0 50	



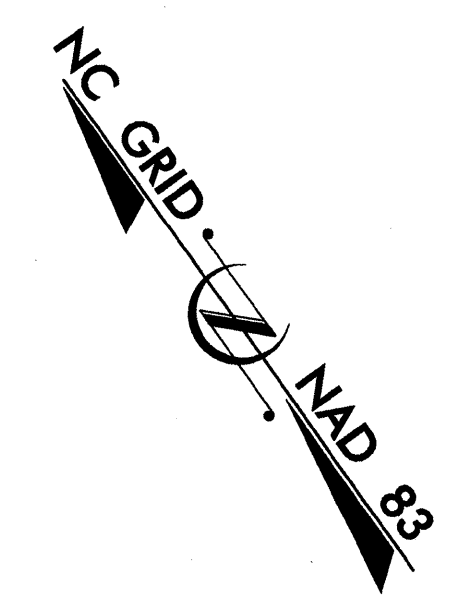
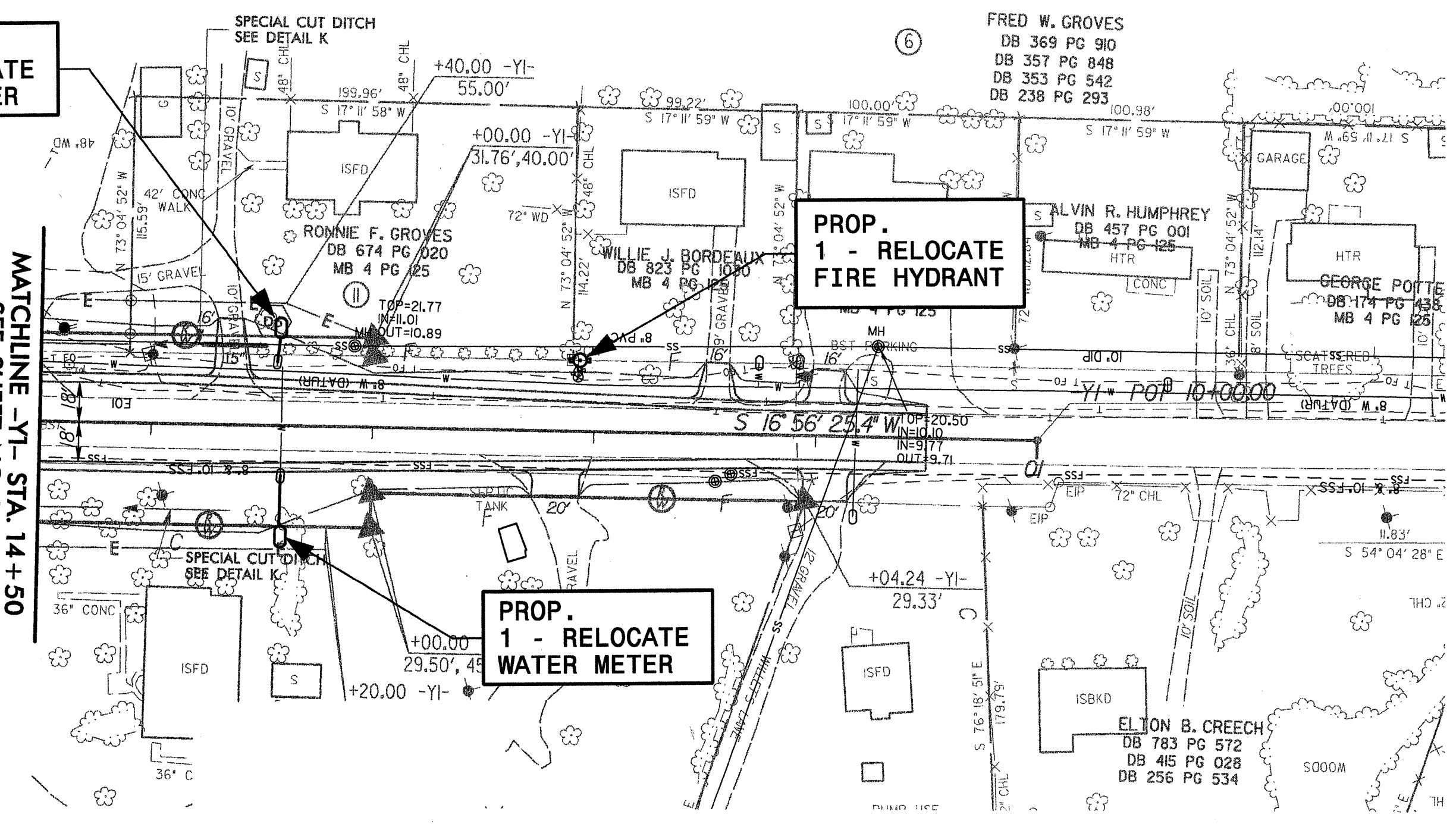
UTILITY CONSTRUCTION

PROP. 1 - RELOCATE WATER METER

PROP. 1 - RELOCATE FIRE HYDRANT

PROP. 1 - RELOCATE WATER METER

MATCHLINE -Y1- STA. 14+50  
SEE SHEET NO. UC-2

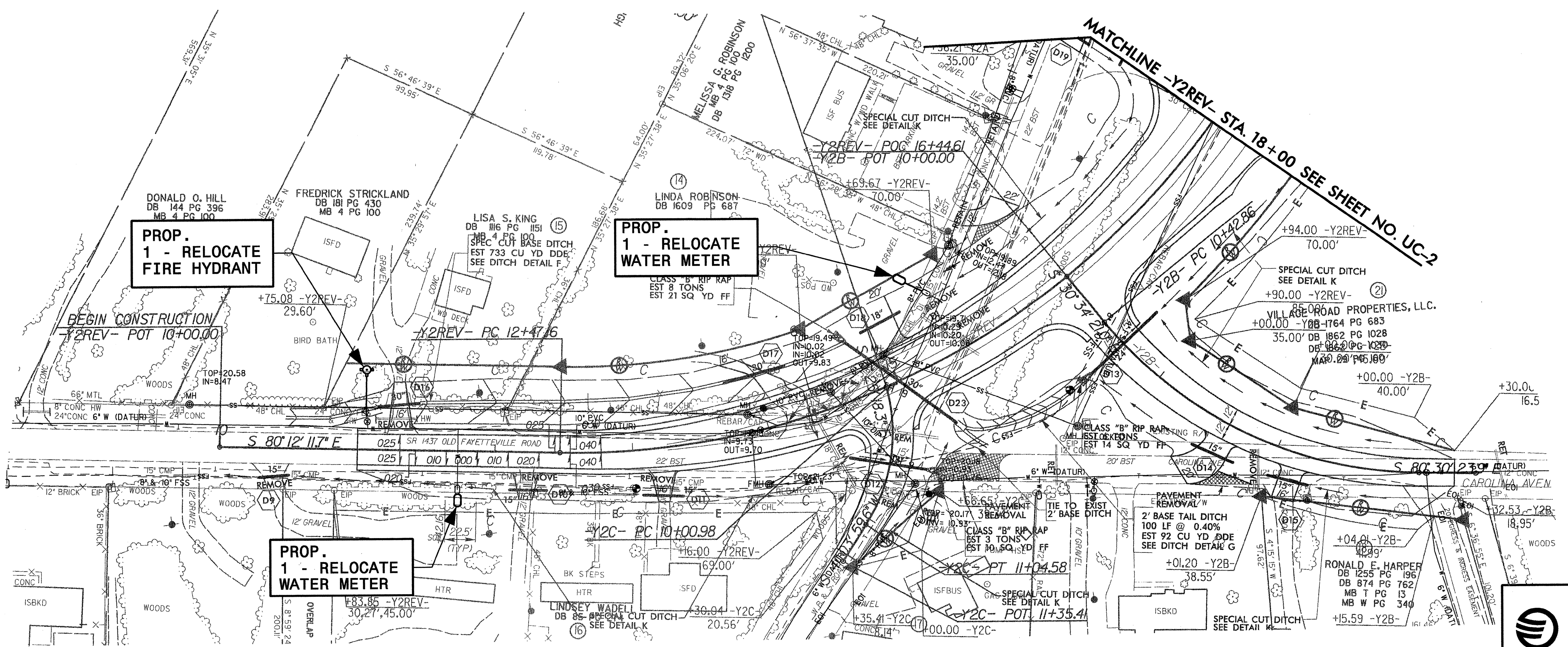


PROP. 1 - RELOCATE FIRE HYDRANT

PROP. 1 - RELOCATE WATER METER

PROP. 1 - RELOCATE WATER METER

MATCHLINE -Y2REV- STA. 18+00  
SEE SHEET NO. UC-2



Prepared by:

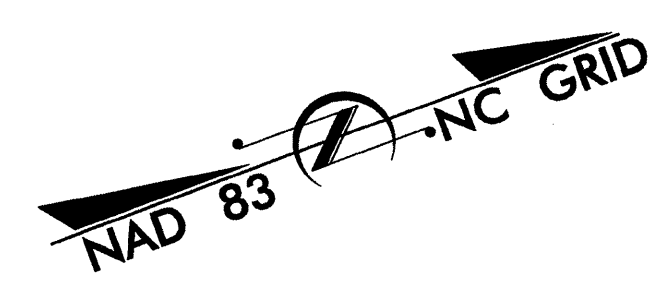
EarthTech  
A Tyco International Ltd. Company  
701 Corporate Center Drive, Suite 475  
Raleigh, NC 27607  
(919) 854-6200 - (919) 854-6259 (fax)

10/13/2008

ALL SEWER LINES OWNED BY THE TOWN OF LELAND OR BRUNSWICK COUNTY. ALL WATER LINES OWNED BY NORTH BRUNSWICK SANITARY DISTRICT.

PROJECT REFERENCE NO. R-4002	SHEET NO. UC-6
SCALE: 25 0 50	

UTILITY CONSTRUCTION



PROP. 1 - 4' DIA. UTILITY MANHOLE B2  
STA. 0+66.41, LINE B  
26.80' RT. OF -Y6- STA. 7+87.80

PROP. 66.41' - 8" SANITARY GRAVITY SEWER (LINE B)

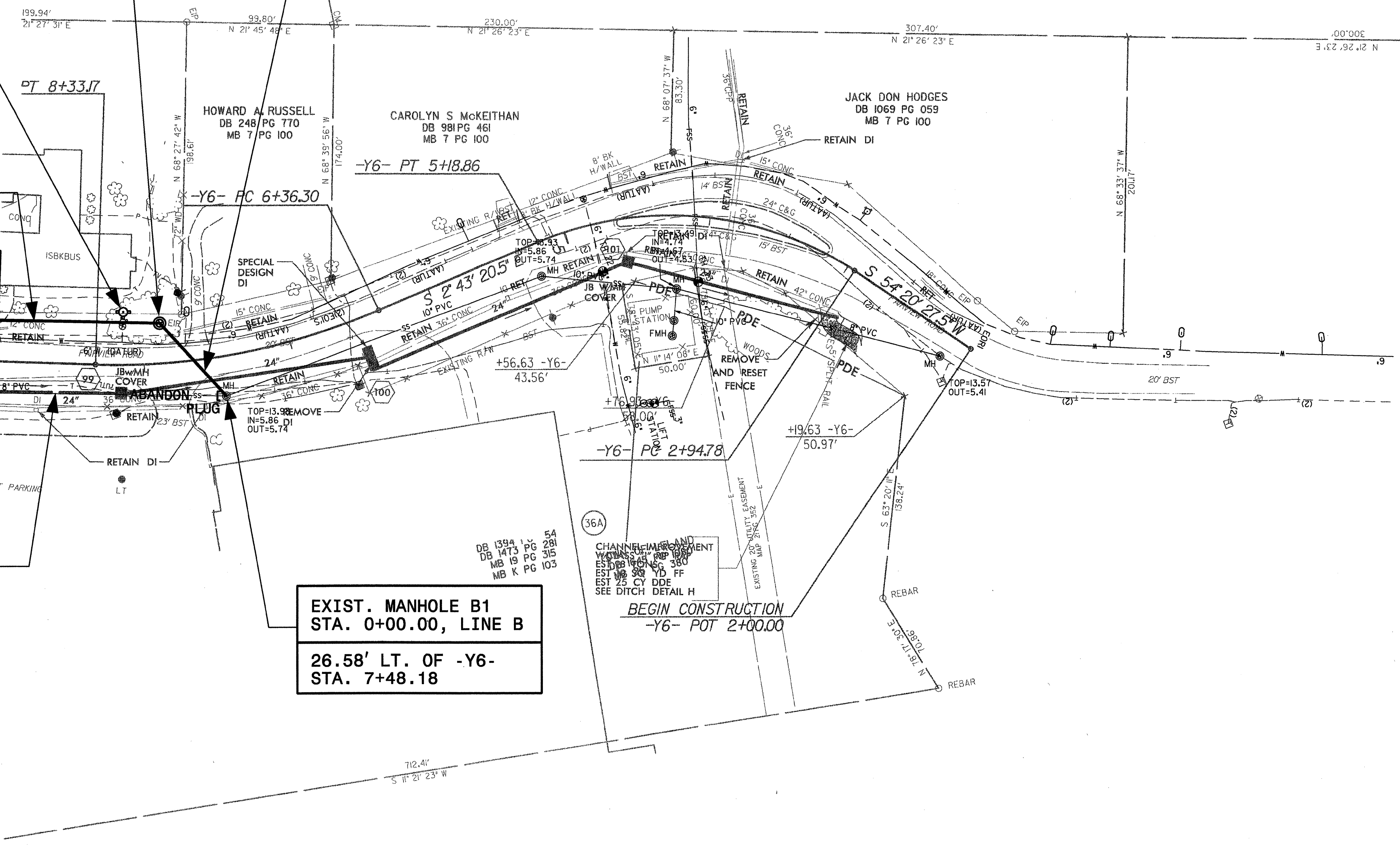
PROP. 1 - RELOCATE FIRE HYDRANT

PROP. 109.46' - 8" SANITARY GRAVITY SEWER (LINE B)

PROP. 156.33' - ABANDON 8" UTILITY PIPE (PVC SEWER)

EXIST. MANHOLE B1  
STA. 0+00.00, LINE B  
26.58' LT. OF -Y6- STA. 7+48.18

MATCH LINE -Y6- STA. 9+00  
SEE SHEET NO. UC-4



-Y6-  
PI Sta 7+36.33  
 $\Delta = 25^{\circ} 03' 55.3''$  (RT)  
D = 12' 43' 56.6"  
L = 196.86'  
T = 100.03'  
R = 450.00'

-Y6-  
PI Sta 4+17.10  
 $\Delta = 57^{\circ} 03' 47.6''$  (LT)  
D = 25' 27' 53.2"  
L = 224.09'  
T = 122.33'  
R = 225.00'

10/13/2008 8:58:58 AM SYSTEMTIME

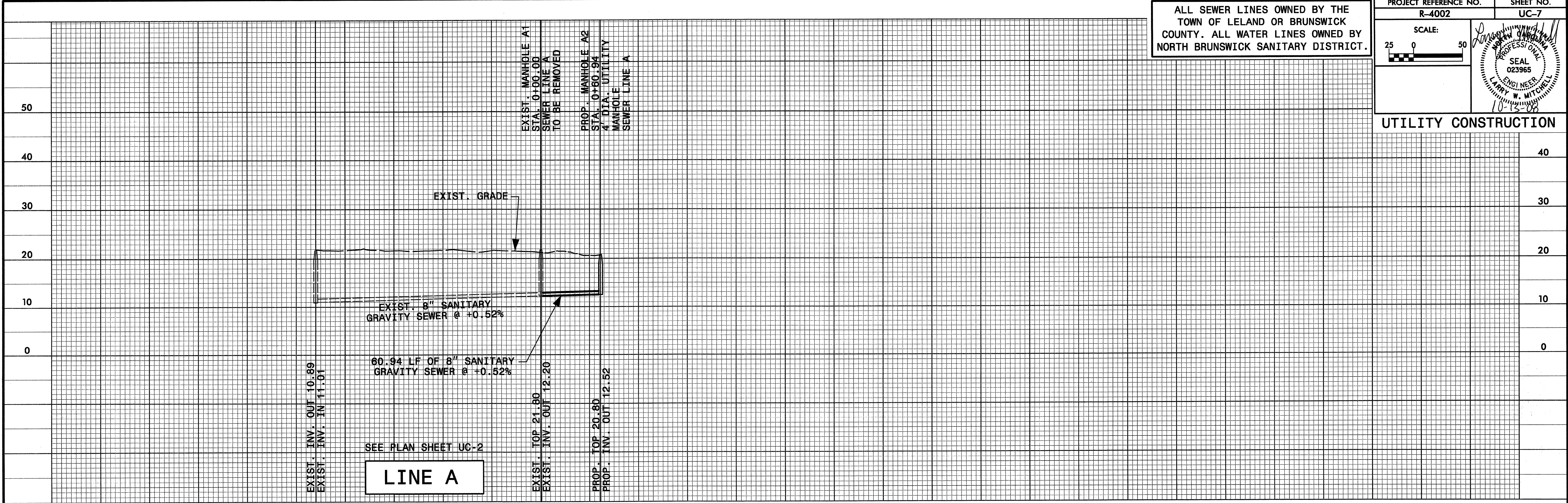
Prepared by:

A Tyco International Ltd. Company  
701 Corporate Center Drive, Suite 475  
Raleigh, NC 27607  
(919) 854-6200 - (919) 854-6259 (fax)

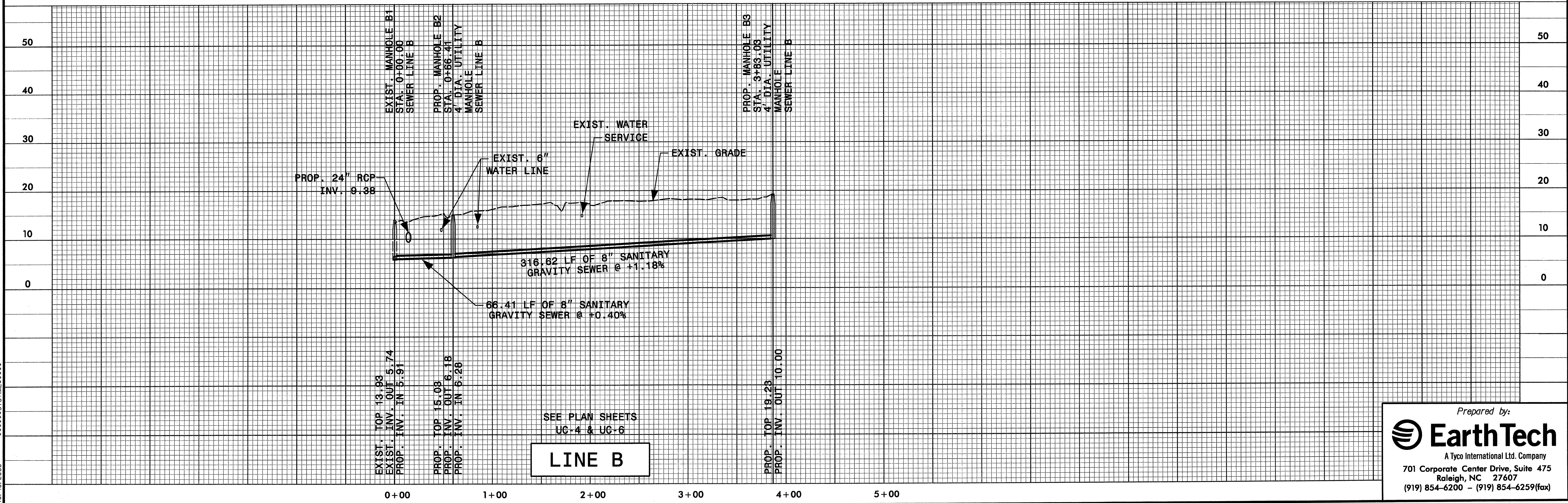
ALL SEWER LINES OWNED BY THE TOWN OF LELAND OR BRUNSWICK COUNTY. ALL WATER LINES OWNED BY NORTH BRUNSWICK SANITARY DISTRICT.

PROJECT REFERENCE NO. R-4002	SHEET NO. UC-7
SCALE: 25 0 50	

UTILITY CONSTRUCTION



**LINE A**



**LINE B**

Prepared by:

A Tyco International Ltd. Company  
 701 Corporate Center Drive, Suite 475  
 Raleigh, NC 27607  
 (919) 854-6200 - (919) 854-6259(fax)

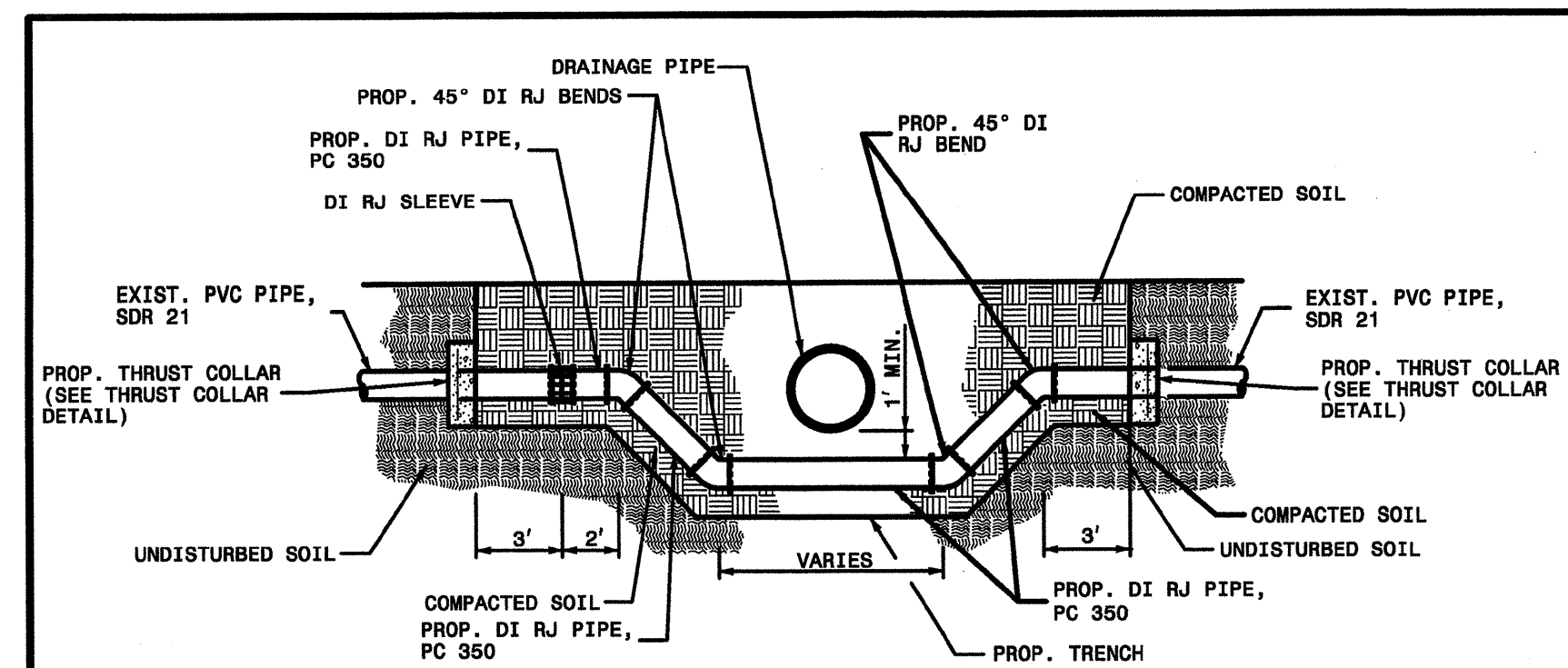
\*\*\*\*\*DCN\*\*\*\*\*  
 \*\*\*\*\*SYSTEM\*\*\*\*\*  
 10/13/2008



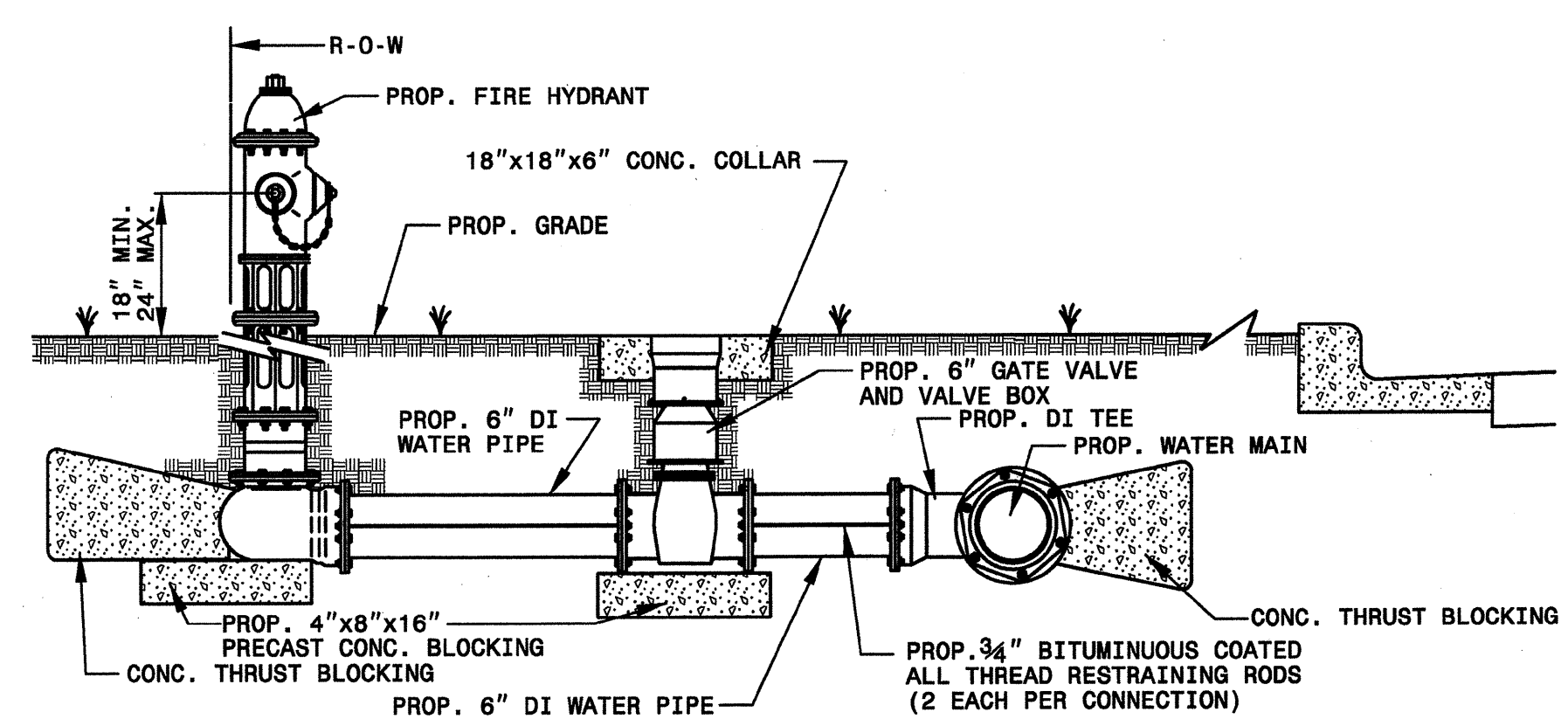


PROJECT REFERENCE NO. R-4002	SHEET NO. UC-9

UTILITY CONSTRUCTION

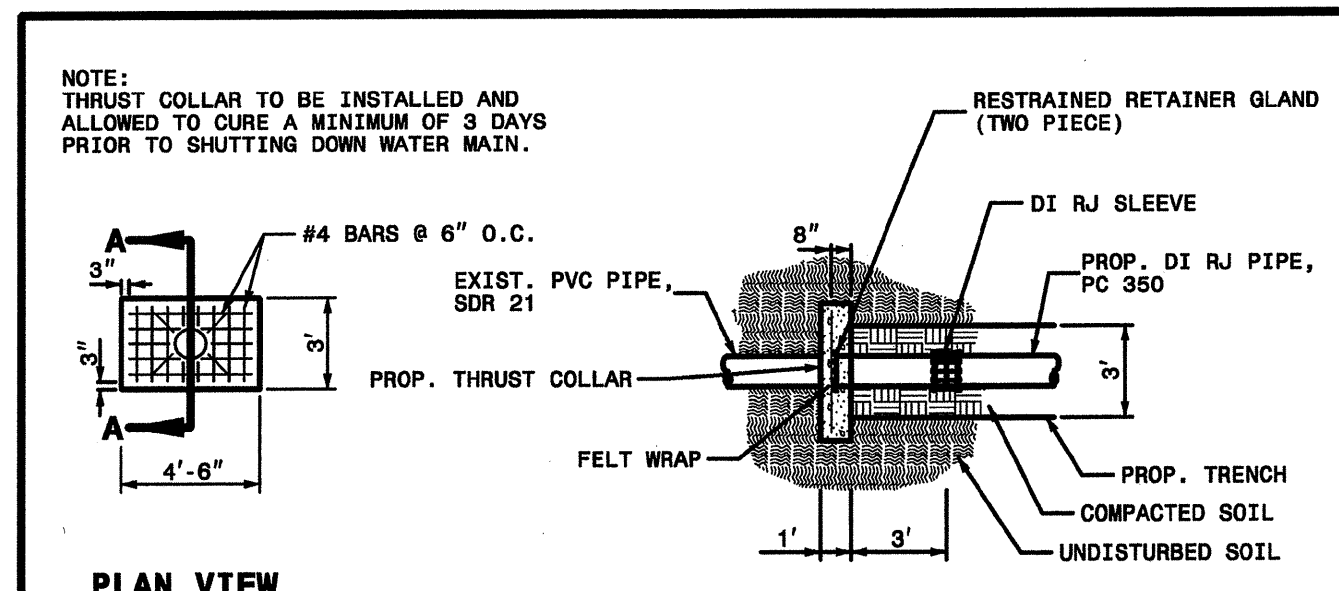


UTILITY RELOCATION DETAIL



FIRE HYDRANT INSTALLATION DETAIL (UNPAVED AREAS)

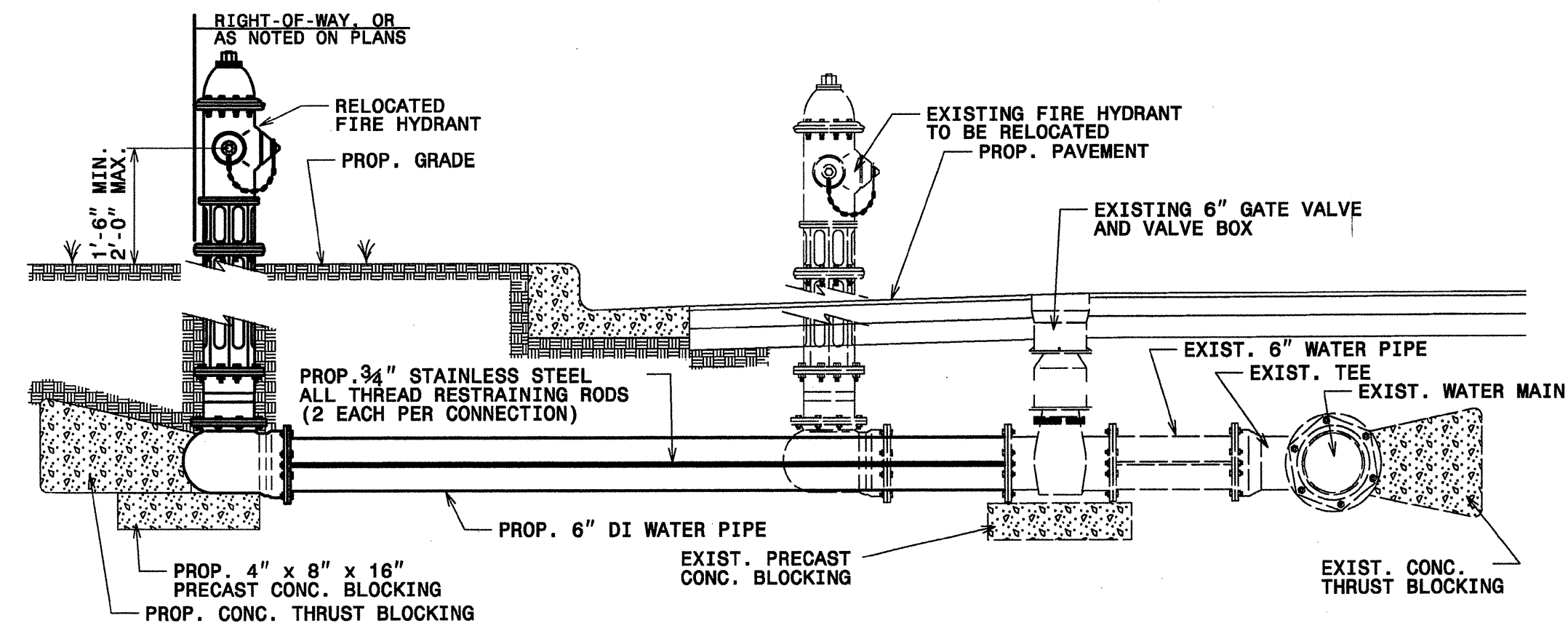
NTS



PLAN VIEW

SECTION A-A

THRUST COLLAR DETAIL



FIRE HYDRANT RELOCATION DETAIL

NTS

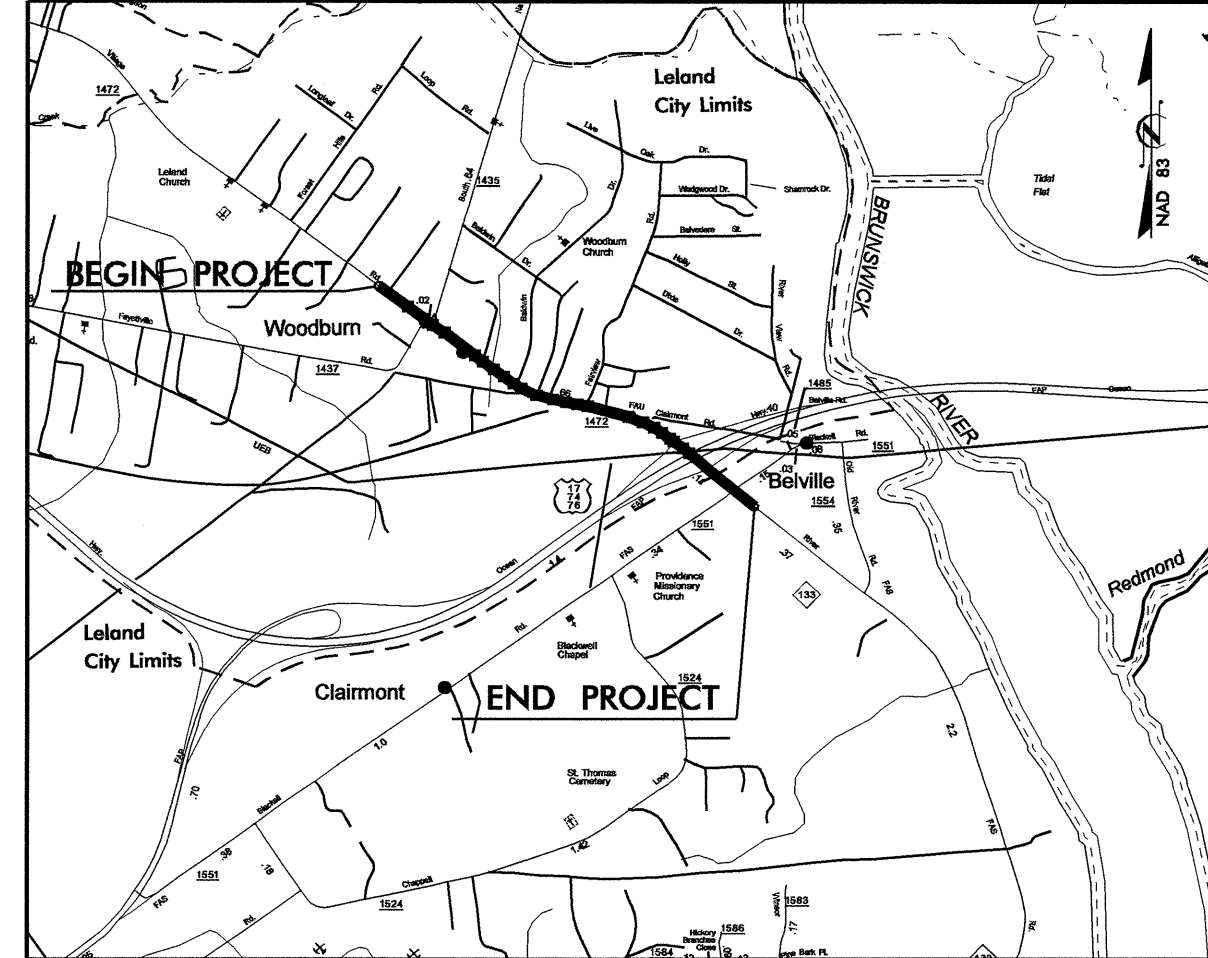
\*\*\*\*\*SYTIME\*\*\*\*\*  
 10/13/2008

Prepared by:

**EarthTech**  
 A Tyco International Ltd. Company  
 701 Corporate Center Drive, Suite 475  
 Raleigh, NC 27607  
 (919) 854-6200 - (919) 854-6259(fax)

09/08/99

SEE SHEET 1A FOR INDEX OF SHEETS  
SEE SHEET 1B FOR CONVENTIONAL SYMBOLS



VICINITY MAP

STATE OF NORTH CAROLINA  
DIVISION OF HIGHWAYS

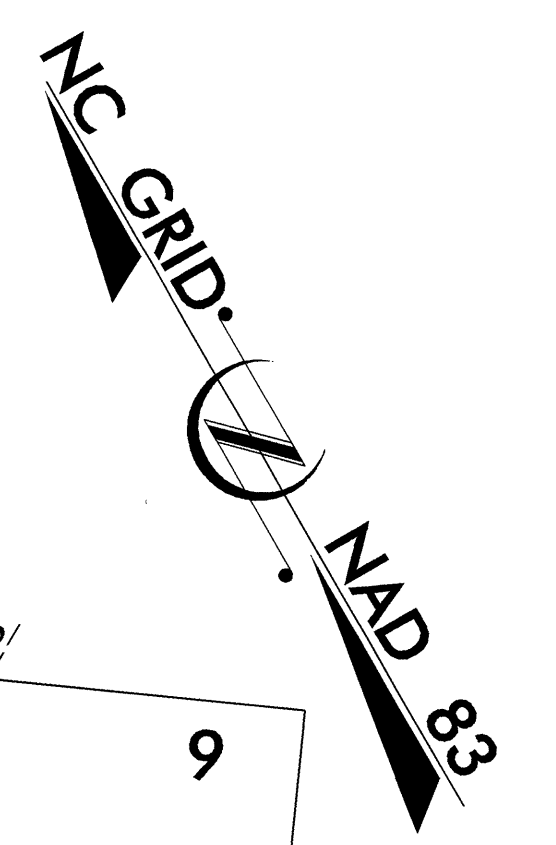
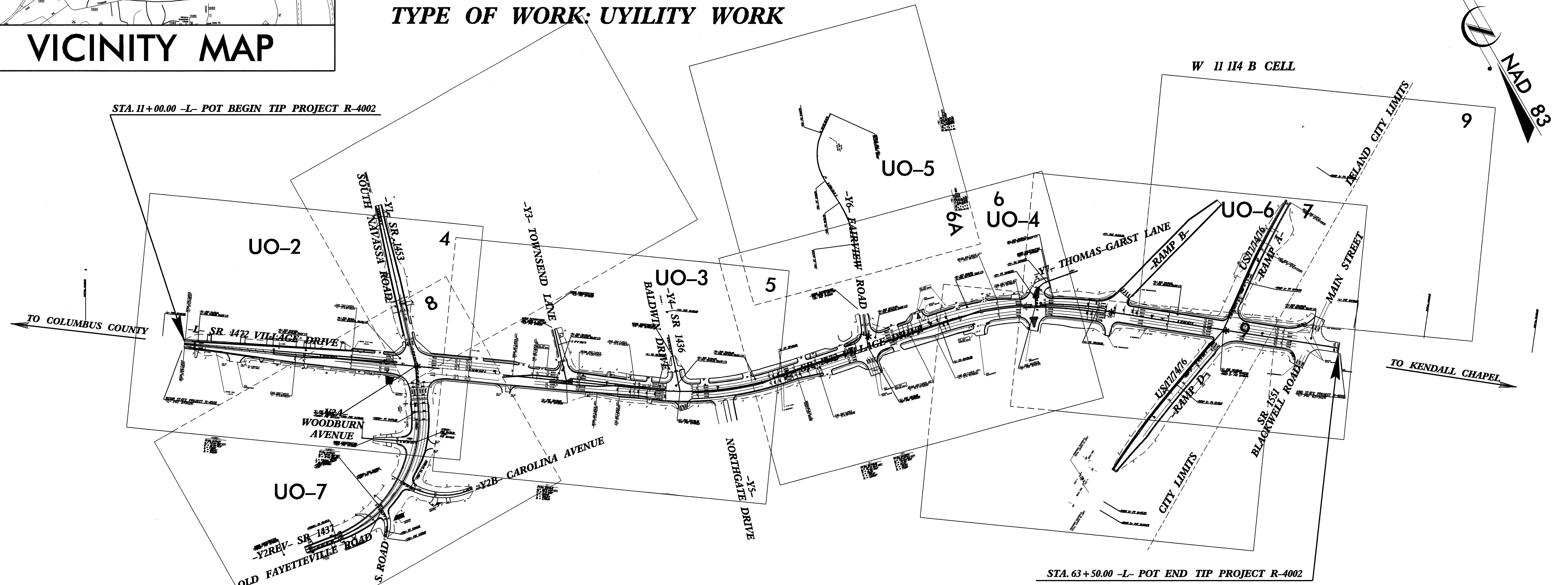
**UTILITIES BY OTHERS PLANS  
BRUNSWICK COUNTY**

LOCATION: SR 1472 (VILLAGE Dr.) WEST OF SR 1437 (Old Fayetteville Rd.)  
SR 1435 (Navassa Rd.) to the US 17 NB Interchange Ramp

TYPE OF WORK: UTILITY WORK

T.I.P. NO.	SHEET NO.
R-4002	UO-1

TIP PROJECT: R-4002

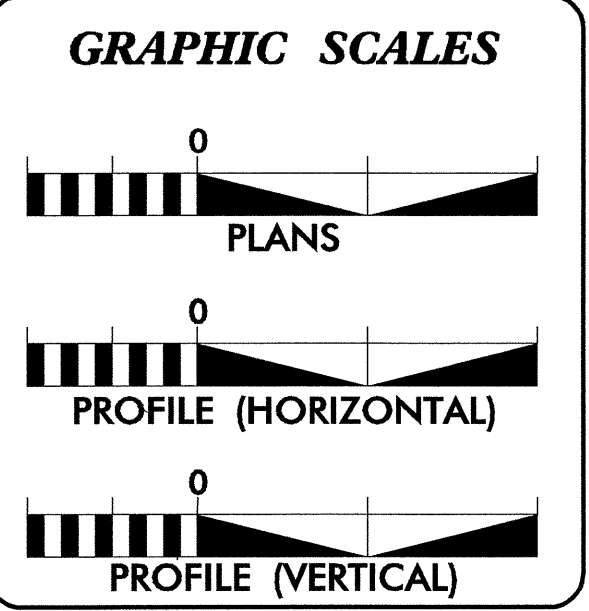


NC DOT CONTACT: CATHY S. HOUSER, P.E.  
PROJECT ENGINEER - DESIGN SERVICES

\* SIGNAL LOCATIONS

CLEARING ON THIS PROJECT SHALL BE PERFORMED  
TO THE LIMITS ESTABLISHED BY METHOD II

NOTE:  
THIS PROJECT IS WITHIN THE MUNICIPAL  
BOUNDARIES OF LELAND.



SHEET NO.	DESCRIPTION
UO-1	TITLE SHEET
UO-2 THRU UO-7	UTILITY BY OTHERS PLAN SHEETS

UTILITY OWNERS ON PROJECT
(1) POWER, PROGRESS ENERGY.
(2) TELEPHONE, BELL SOUTH.

PREPARED IN THE OFFICE OF:  
**DIVISION OF HIGHWAYS  
DESIGN SERVICES  
UTILITY SECTION**

1591 MAIL SERVICES CENTER  
RALEIGH NC 27699-1591  
PHONE (919) 250-4128  
FAX (919) 250-4119

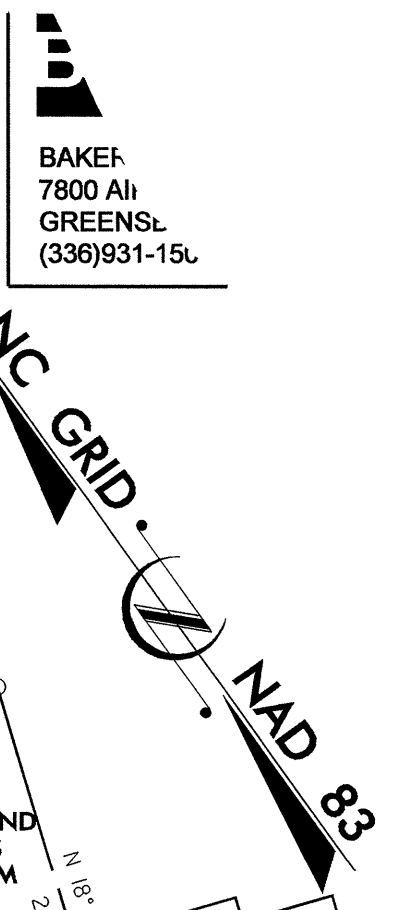
**Roger Worthington, P.E.** UTILITIES SECTION ENGINEER  
**Steve McKee, P.E.** UTILITIES SQUAD LEADER PROJECT ENGINEER  
**Jamshid Hafshejani** UTILITIES PROJECT DESIGNER

09-OCT-2008 09:49  
R:\Utilities\RDY\UH\Proj\4002.rdy\_uo1\_title.dgn  
\$\$\$\$\$USERNAME\$\$\$\$\$

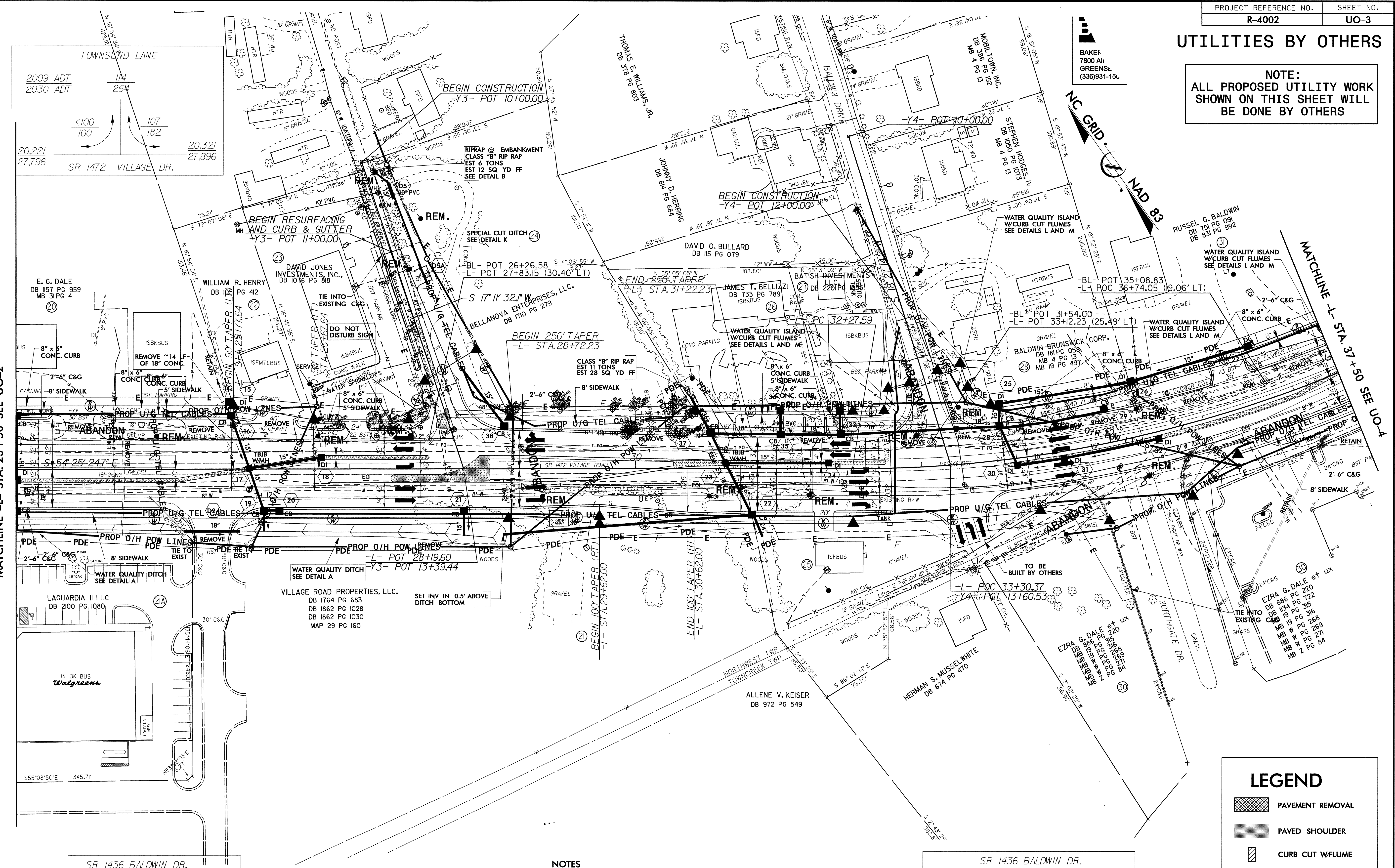


**UTILITIES BY OTHERS**

NOTE:  
ALL PROPOSED UTILITY WORK  
SHOWN ON THIS SHEET WILL  
BE DONE BY OTHERS



BAKER  
7800 AI  
GREENSL  
(336)931-15.



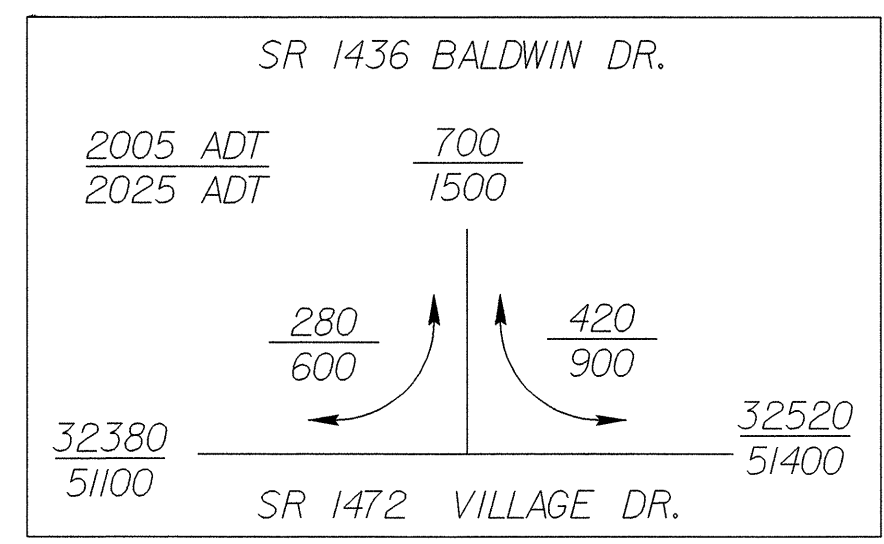
MATCHLINE -L- STA. 23+50 SEE UO-2

MATCHLINE -L- STA. 37+50 SEE UO-4

**LEGEND**

- PAVEMENT REMOVAL
- PAVED SHOULDER
- CURB CUT W/FLUME

- NOTES**
1. ALL DRIVEWAY RADII IN SHOULDER SECTION ARE 5' UNLESS OTHERWISE NOTED.
  2. ALL COMMERCIAL DRIVEWAY RADII ARE 8' UNLESS OTHERWISE NOTED.
  3. ALL CHANNELIZATION CURBING IS 8" X 6" AND ALL 8" X 6" CURBING RADII ARE 3' UNLESS OTHERWISE NOTED.
  4. SEE PAVEMENT MARKING PLANS FOR DIMENSIONS OF PAINTED ISLANDS.



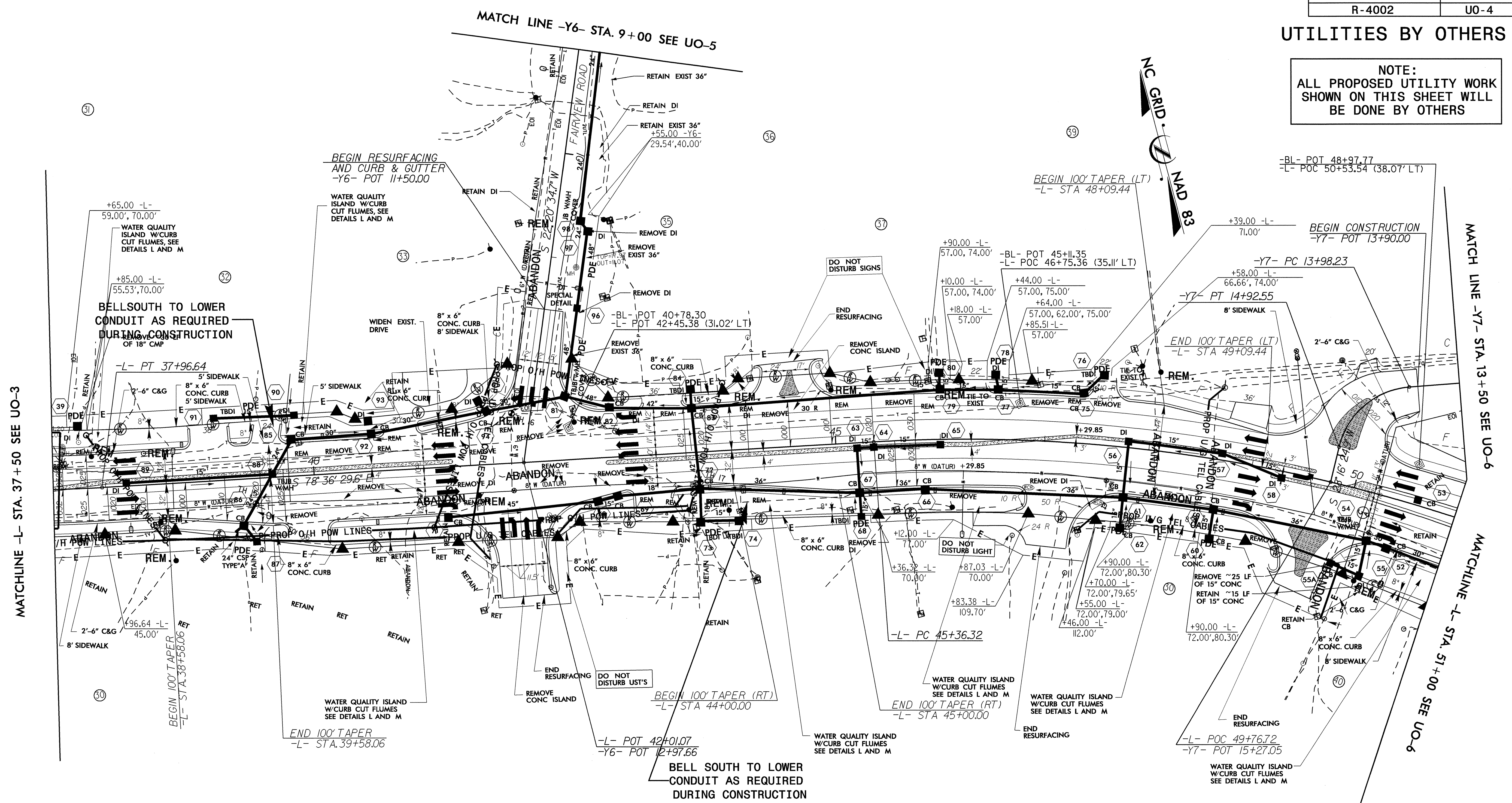
SEE PROFILES FOR SPECIAL DITCH GRADES  
SEE SHEET 10 FOR -L- PROFILE  
SEE SHEET 13 FOR -Y3- PROFILE  
SEE SHEET 14 FOR -Y4- PROFILE  
SEE SHEET 14 FOR -Y5- PROFILE  
SEE SHEET 2-C FOR WATER QUALITY ISLAND AND CURB CUT W/FLUME DETAILS  
SEE SHEET 2-D FOR -Y3- INTERSECTION DETAIL  
SEE SHEET 2-E FOR -Y4- & -Y5- INTERSECTION DETAIL

-L-  
PI Sta 35+16.41  
 $\Delta = 24' 11" 04.9" (LT)$   
 $D = 4' 15" 00.0"$   
 $L = 569.05'$   
 $T = 288.83'$   
 $R = 1,348.14'$

09-06-2006 09:15:40 4002-rdyl-uo3-sheet5.dgn

UTILITIES BY OTHERS

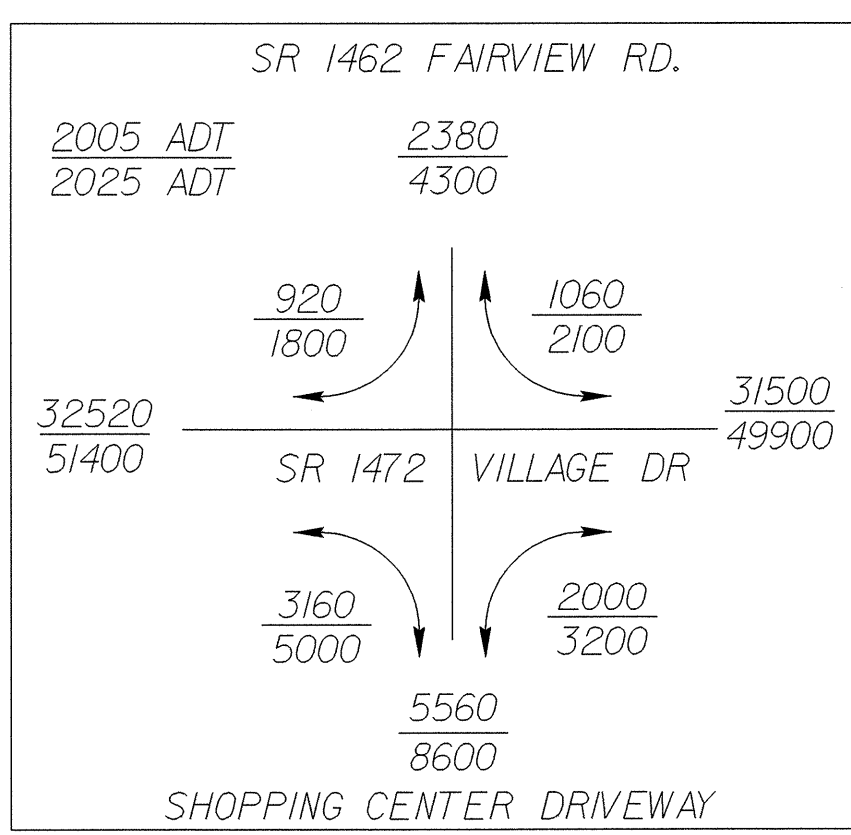
NOTE:  
ALL PROPOSED UTILITY WORK  
SHOWN ON THIS SHEET WILL  
BE DONE BY OTHERS



MATCHLINE -L- STA. 37+50 SEE UO-3

MATCHLINE -Y7- STA. 13+50 SEE UO-6

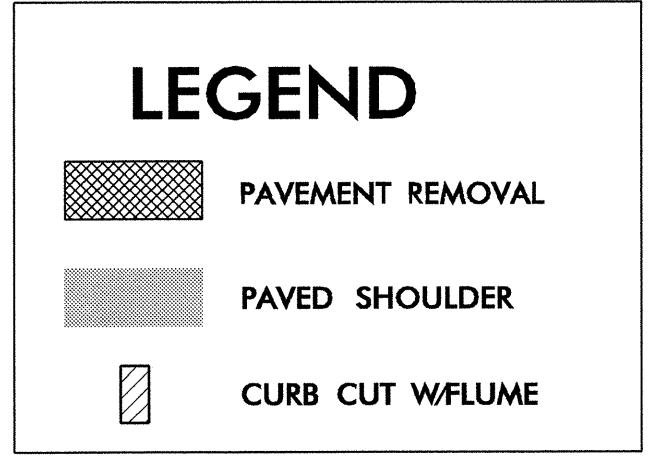
MATCHLINE -L- STA. 51+00 SEE UO-6



-L-  
PI Sta 49+02.48  
Δ = 27° 31' 48.3" (RT)  
D = 3' 50' 00.0"  
L = 718.18'  
T = 366.16'  
R = 1,494.67'

-Y7-  
PI Sta 14+52.78  
Δ = 72° 03' 38.1" (LT)  
D = 76° 23' 39.7"  
L = 94.33'  
T = 54.55'  
R = 75.00'

- NOTES
1. ALL DRIVEWAY RADII IN SHOULDER SECTION ARE 5' UNLESS OTHERWISE NOTED.
  2. ALL COMMERCIAL DRIVEWAY RADII ARE 8' UNLESS OTHERWISE NOTED.
  3. ALL CHANNELIZATION CURBING IS 8" X 6" AND ALL 8" X 6" CURBING RADII ARE 3' UNLESS OTHERWISE NOTED.
  4. SEE PAVEMENT MARKING PLANS FOR DIMENSIONS OF PAINTED ISLANDS.

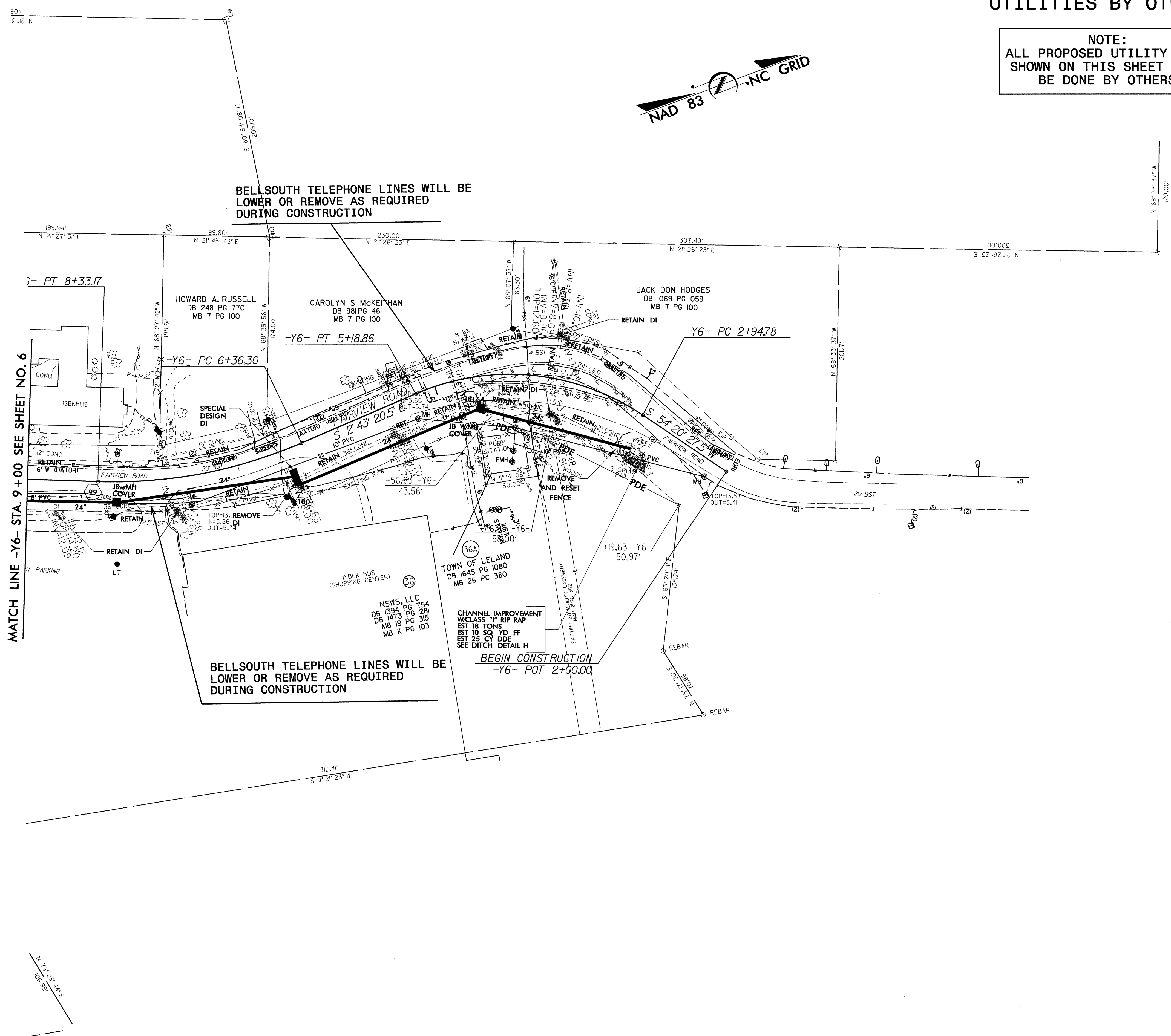
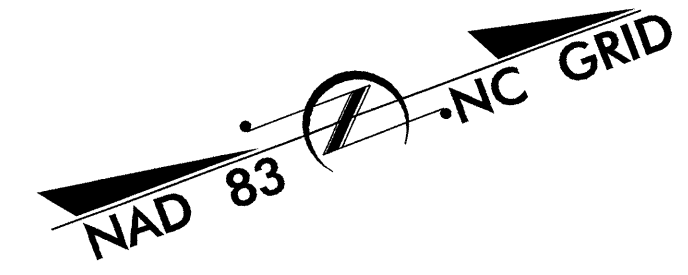


SEE SHEET 11 FOR -L- PROFILE  
SEE SHEET 14 FOR -Y6- PROFILE  
SEE SHEET 14 FOR -Y7- PROFILE  
SEE SHEET 2-C FOR WATER QUALITY ISLAND AND CURB CUT W/FLUME DETAILS  
SEE SHEET 2-E FOR -Y6- INTERSECTION DETAIL  
SEE SHEET 2-F FOR -Y7- INTERSECTION DETAIL

09-06-2006 10:20 AM R:\002=rel\UO4=shets\6.dgn  
 11/14/08

# UTILITIES BY OTHERS

**NOTE:**  
ALL PROPOSED UTILITY WORK  
SHOWN ON THIS SHEET WILL  
BE DONE BY OTHERS



BELLSOUTH TELEPHONE LINES WILL BE LOWER OR REMOVE AS REQUIRED DURING CONSTRUCTION

BELLSOUTH TELEPHONE LINES WILL BE LOWER OR REMOVE AS REQUIRED DURING CONSTRUCTION

MATCH LINE -Y6- STA. 9+00 SEE SHEET NO. 6

BEGIN CONSTRUCTION  
-Y6- POT 2+00.00

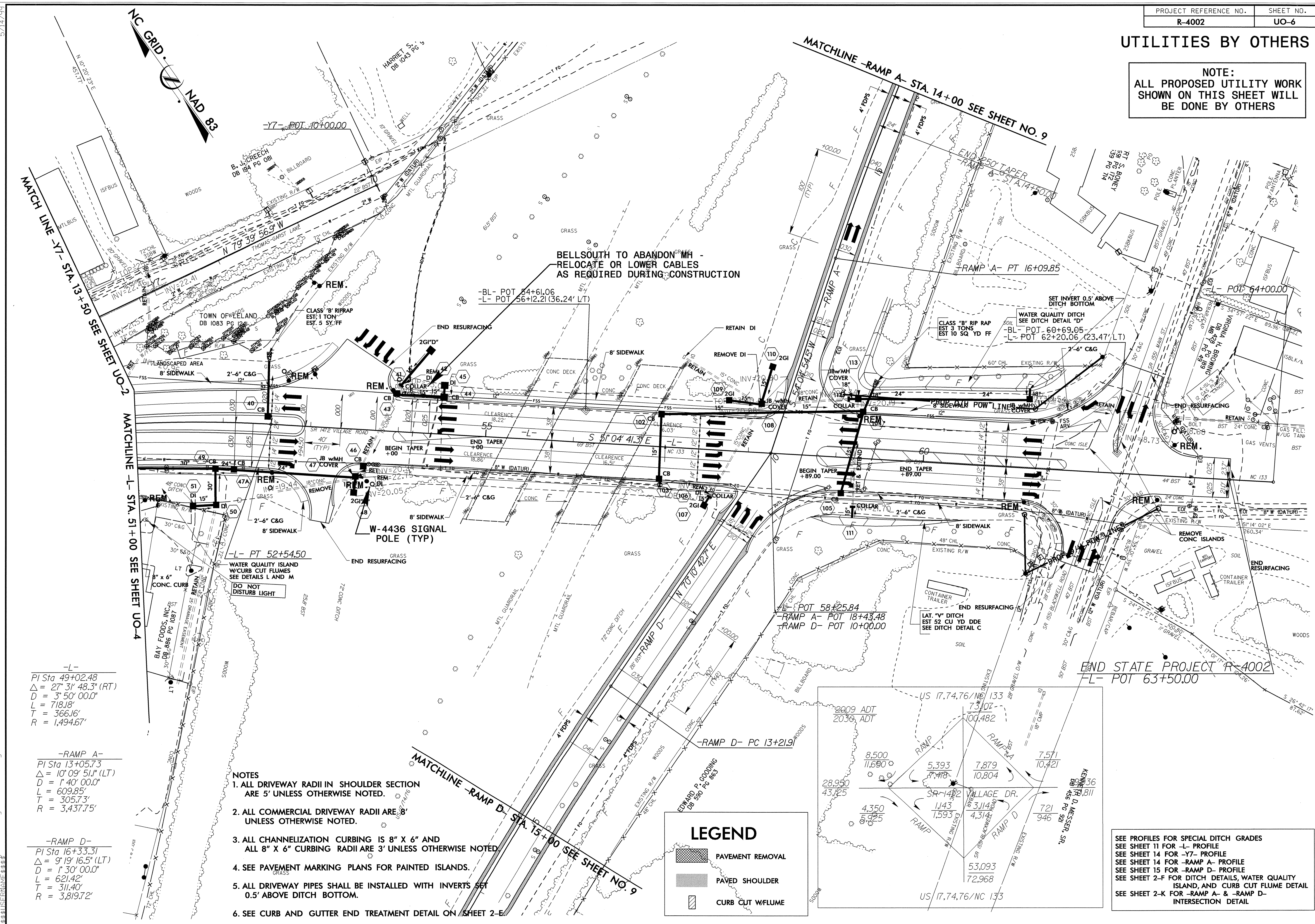
REVISIONS

5/14/99  
5/14/99

U:\t\1\09-01\1-2008\_09:54 R-4002\_rdy\_U05\_sheet6a.dgn

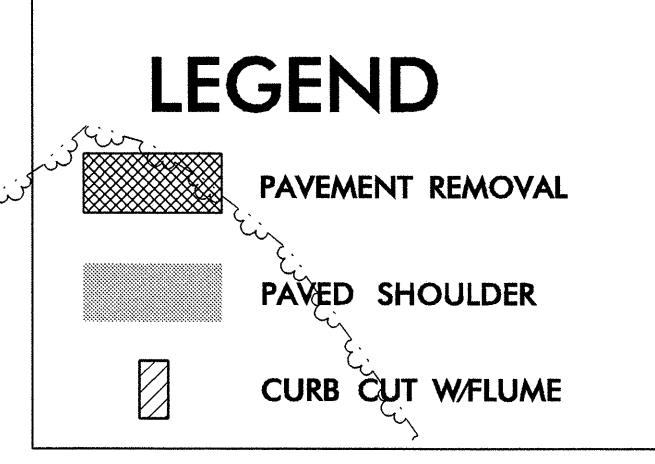
# UTILITIES BY OTHERS

NOTE:  
ALL PROPOSED UTILITY WORK  
SHOWN ON THIS SHEET WILL  
BE DONE BY OTHERS



BELLSOUTH TO ABANDON<sup>RM</sup> MH -  
RELOCATE OR LOWER CABLES  
AS REQUIRED DURING CONSTRUCTION

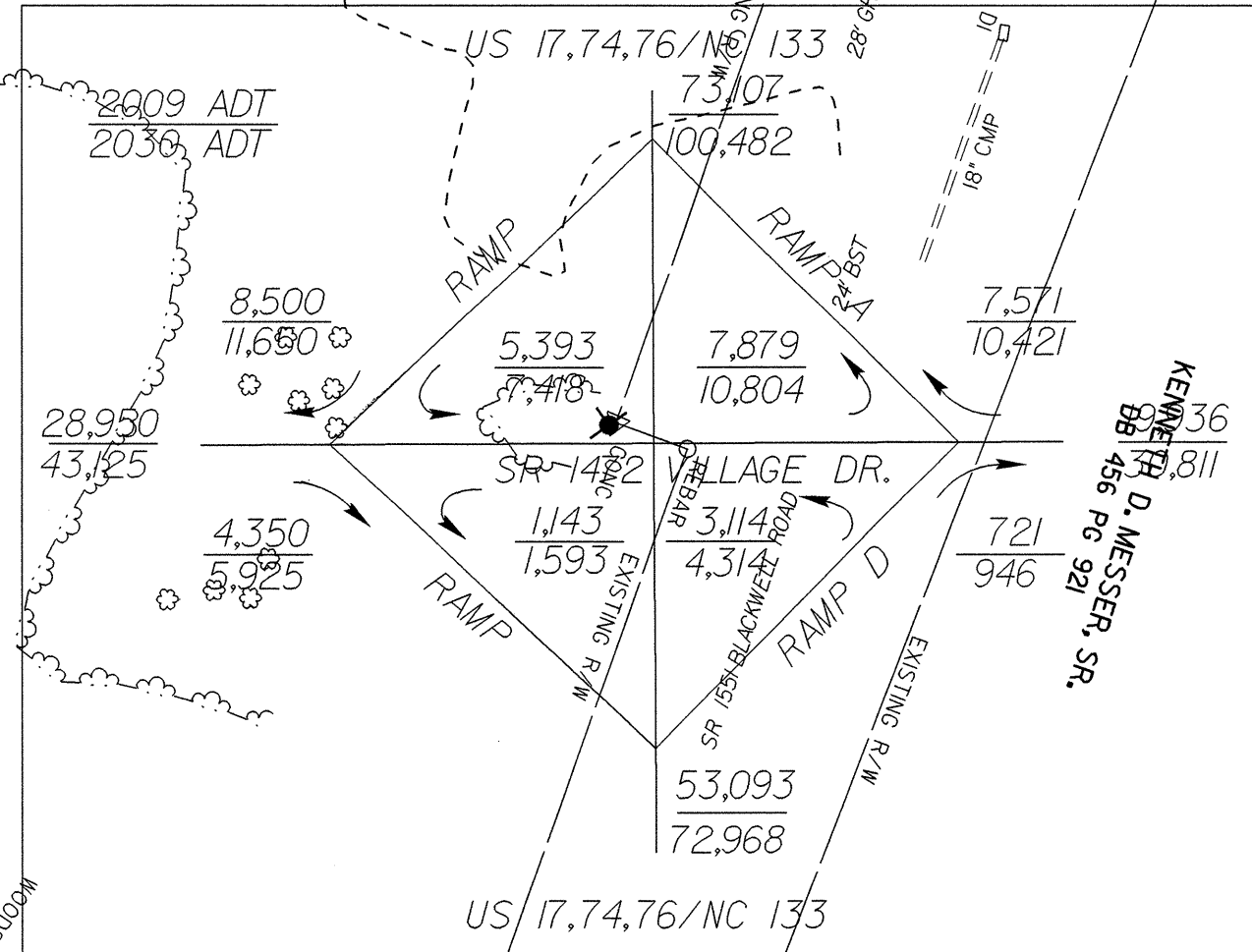
- NOTES
- 1. ALL DRIVEWAY RADII IN SHOULDER SECTION ARE 5' UNLESS OTHERWISE NOTED.
- 2. ALL COMMERCIAL DRIVEWAY RADII ARE 8' UNLESS OTHERWISE NOTED.
- 3. ALL CHANNELIZATION CURBING IS 8" X 6" AND ALL 8" X 6" CURBING RADII ARE 3' UNLESS OTHERWISE NOTED.
- 4. SEE PAVEMENT MARKING PLANS FOR PAINTED ISLANDS.
- 5. ALL DRIVEWAY PIPES SHALL BE INSTALLED WITH INVERTS SET 0.5' ABOVE DITCH BOTTOM.
- 6. SEE CURB AND GUTTER END TREATMENT DETAIL ON SHEET 2-E



-L-  
PI Sta 49+02.48  
 $\Delta = 27' 31" 48.3" (RT)$   
 $D = 3' 50' 00.0"$   
 $L = 718.18'$   
 $T = 366.16'$   
 $R = 1,494.67'$

-RAMP A-  
PI Sta 13+05.73  
 $\Delta = 10' 09' 51.1" (LT)$   
 $D = 1' 40' 00.0"$   
 $L = 609.85'$   
 $T = 305.73'$   
 $R = 3,437.75'$

-RAMP D-  
PI Sta 16+33.31  
 $\Delta = 9' 19' 16.5" (LT)$   
 $D = 1' 30' 00.0"$   
 $L = 621.42'$   
 $T = 311.40'$   
 $R = 3,819.72'$

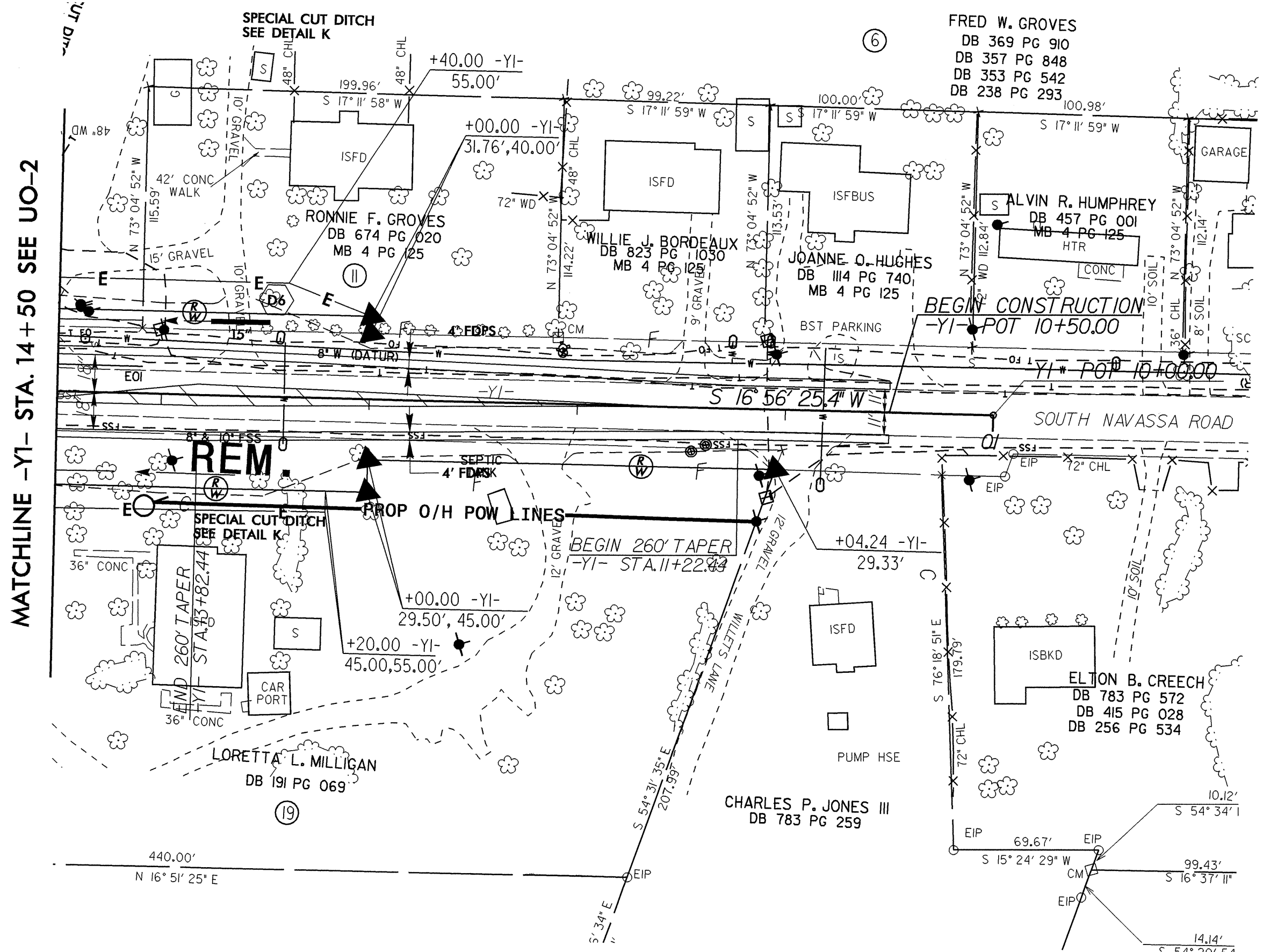
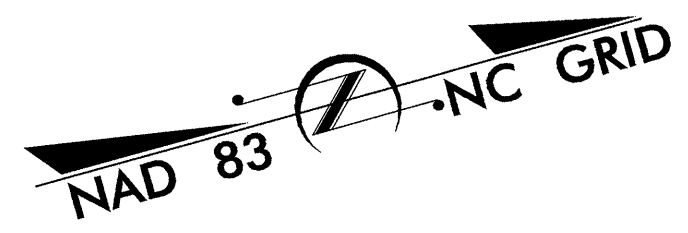


SEE PROFILES FOR SPECIAL DITCH GRADES  
SEE SHEET 11 FOR -L- PROFILE  
SEE SHEET 14 FOR -Y7- PROFILE  
SEE SHEET 14 FOR -RAMP A- PROFILE  
SEE SHEET 15 FOR -RAMP D- PROFILE  
SEE SHEET 2-F FOR DITCH DETAILS, WATER QUALITY ISLAND, AND CURB CUT FLUME DETAIL  
SEE SHEET 2-K FOR -RAMP A- & -RAMP D- INTERSECTION DETAIL

09-06: 2008 09:54 R-4002-rdy\_UO6.she7.dgn 5/14/99

UTILITIES BY OTHERS

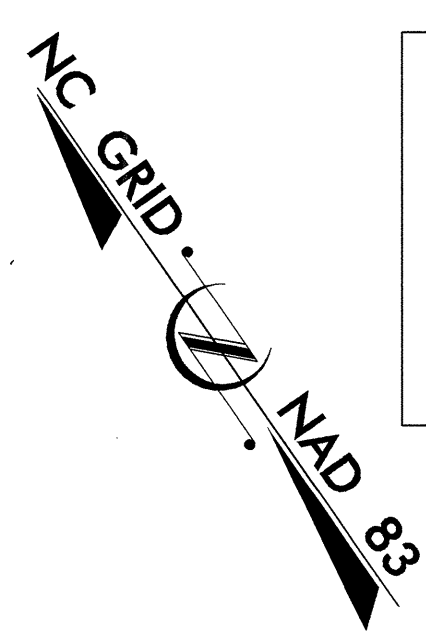
NOTE:  
ALL PROPOSED UTILITY WORK  
SHOWN ON THIS SHEET WILL  
BE DONE BY OTHERS



LEGEND

- PAVEMENT REMOVAL
- PAVED SHOULDER

SEE PROFILES FOR SPECIAL-DITCH GRADES  
SEE SHEET 12 FOR -Y1- PROFILE



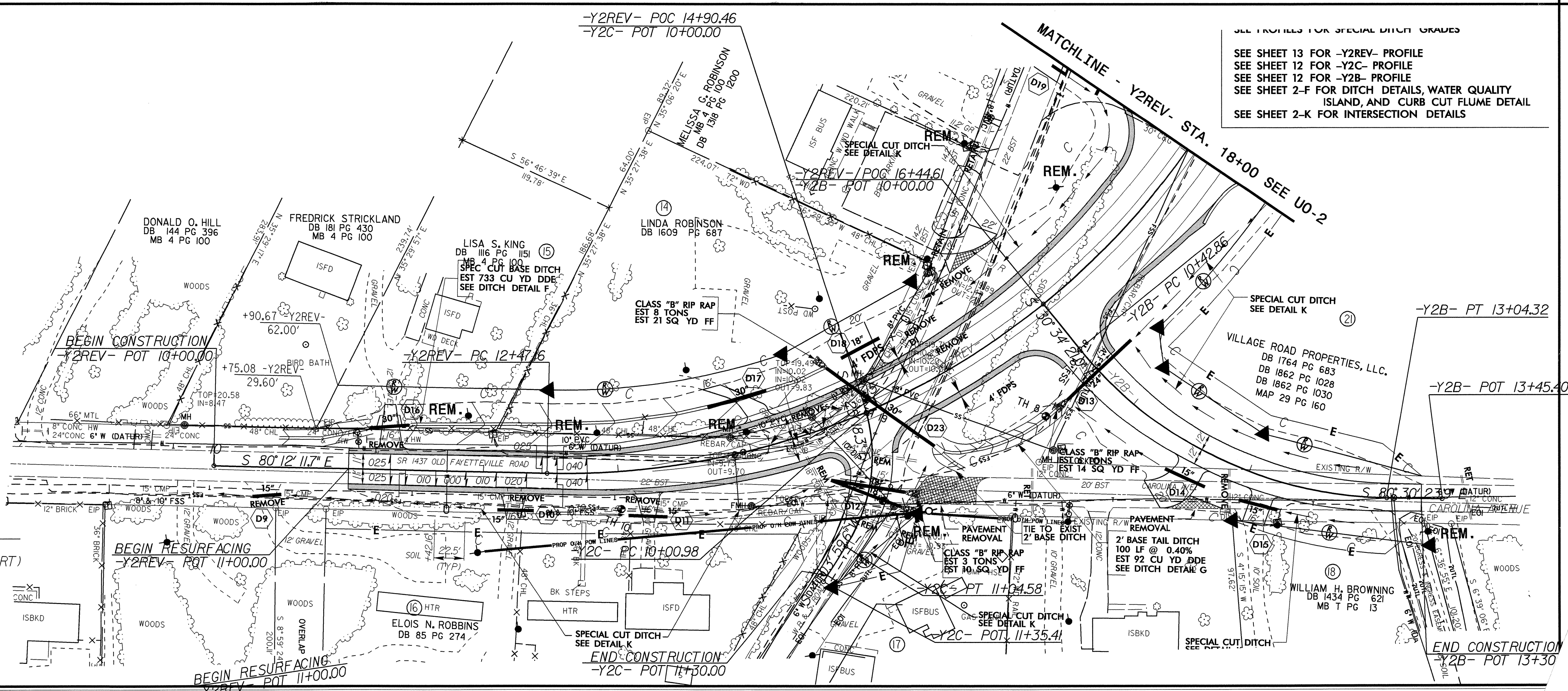
LEGEND

- PAVEMENT REMOVAL
- PAVED SHOULDER

NOTES

1. ALL DRIVEWAY RADII IN SHOULDER SECTION ARE 5' UNLESS OTHERWISE NOTED.
2. ALL COMMERCIAL DRIVEWAY RADII ARE 8' UNLESS OTHERWISE NOTED.
3. ALL CHANNELIZATION CURBING IS 8" X 6" AND ALL 8" X 6" CURBING RADII ARE 3' UNLESS OTHERWISE NOTED.
4. SEE PAVEMENT MARKING PLANS FOR PAINTED ISLANDS.
5. ALL DRIVEWAY PIPES SHALL BE INSTALLED WITH INVERTS SET 0.5' ABOVE DITCH BOTTOM.
6. SEE CURB AND GUTTER END TREATMENT DETAIL ON SHEET 2-E.

<p><b>-Y2REV-</b></p> <p>PI Sta 16+74.13 = 74° 09' 21.0" (LT) D = 10' 08' 27.0" L = 731.26' T = 426.96' R = 565.00'</p>	<p><b>-Y2B-</b></p> <p>PI Sta 11+82.54 = 49° 56' 02.9" (LT) D = 19' 05' 54.9" L = 261.45' T = 139.68' R = 300.00'</p>	<p><b>-Y2C-</b></p> <p>PI Sta 10+55.97 = 47° 29' 17.9" (RT) D = 45' 50' 11.8" L = 103.60' T = 54.99' R = 125.00'</p>
---	---	--



SEE PROFILES FOR SPECIAL-DITCH GRADES  
SEE SHEET 13 FOR -Y2REV- PROFILE  
SEE SHEET 12 FOR -Y2C- PROFILE  
SEE SHEET 2-F FOR DITCH DETAILS, WATER QUALITY ISLAND, AND CURB CUT FLUME DETAIL  
SEE SHEET 2-K FOR INTERSECTION DETAILS

09-OCT-2008 11:42 U:\Utilities\rdh\UO-7.dwg R-4002.rdy UO-7\_sheets.dgn