

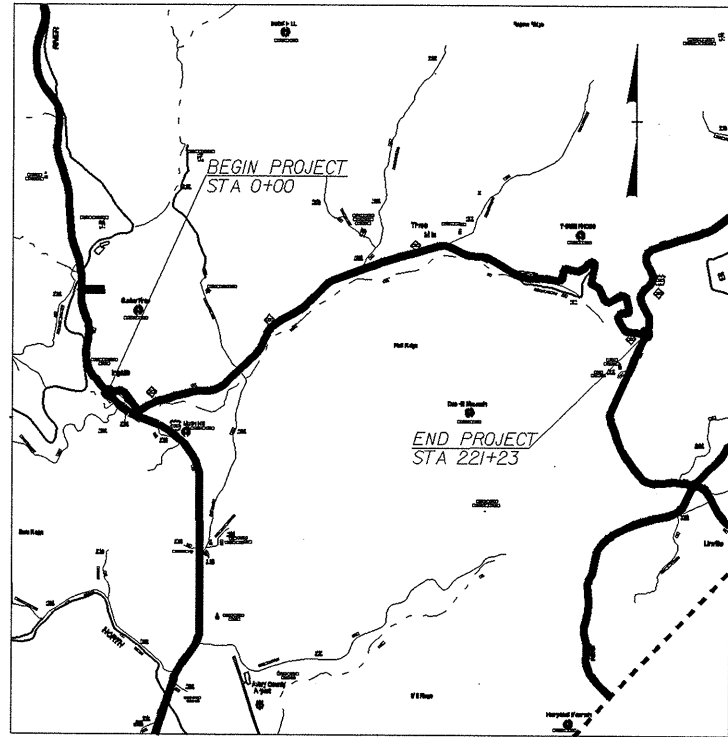
09/08/09

29-MAY-2009 14:24
s:\contracts\resurfacing projects\division INR-5158\R-5158_ddc.tsh_041409.dgn
dshuller

TIP PROJECT: R-5158

CONTRACT: C202373

VICINITY MAP



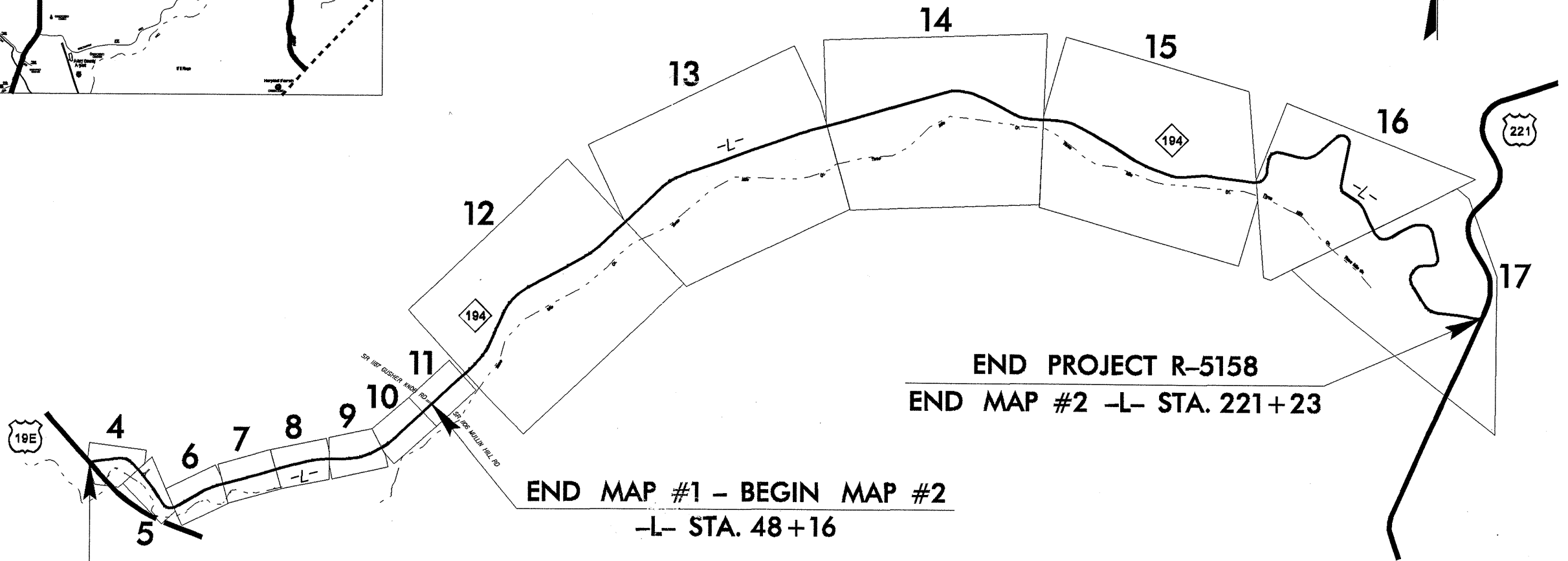
STATE OF NORTH CAROLINA
DIVISION OF HIGHWAYS

AVERY COUNTY

LOCATION: NC 194 FROM US 19 E TO US 221

TYPE OF WORK: GRADING, WIDENING, DRAINAGE, MILLING,
RESURFACING, AND SHOULDER RECONSTRUCTION

STATE	STATE PROJECT REFERENCE NO.	SHEET NO.	TOTAL SHEETS
N.C.	R-5158	1	
STATE PROJ. NO.	F.A. PROJ. NO.	DESCRIPTION	
45105.3.STI	STM-0193(10)		



BEGIN PROJECT R-5158
BEGIN MAP #1 -L- STA. 0+00

END MAP #1 - BEGIN MAP #2
-L- STA. 48+16

END PROJECT R-5158
END MAP #2 -L- STA. 221+23

Prepared in the Office of:
DIVISION OF HIGHWAYS
801 STATESVILLE ROAD, NORTH WILKESBORO, NC. 28659

2006 STANDARD SPECIFICATIONS

RIGHT OF WAY DATE:
NA

LETTING DATE:
JULY 21, 2009

JOE L. LAWS, PE
DIVISION PROJECT MANAGER

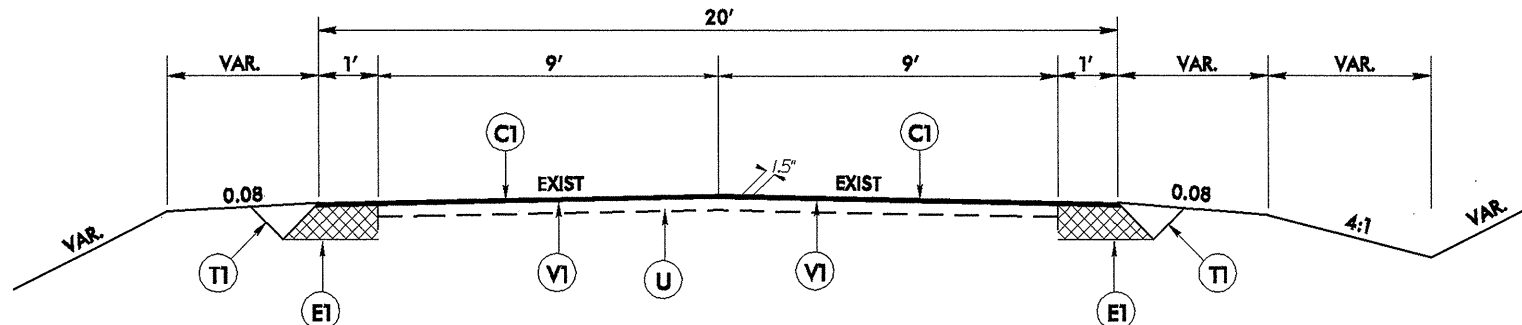
MICHAEL A. PETTYJOHN, PE
DIVISION ENGINEER

DIVISION OF HIGHWAYS
STATE OF NORTH CAROLINA



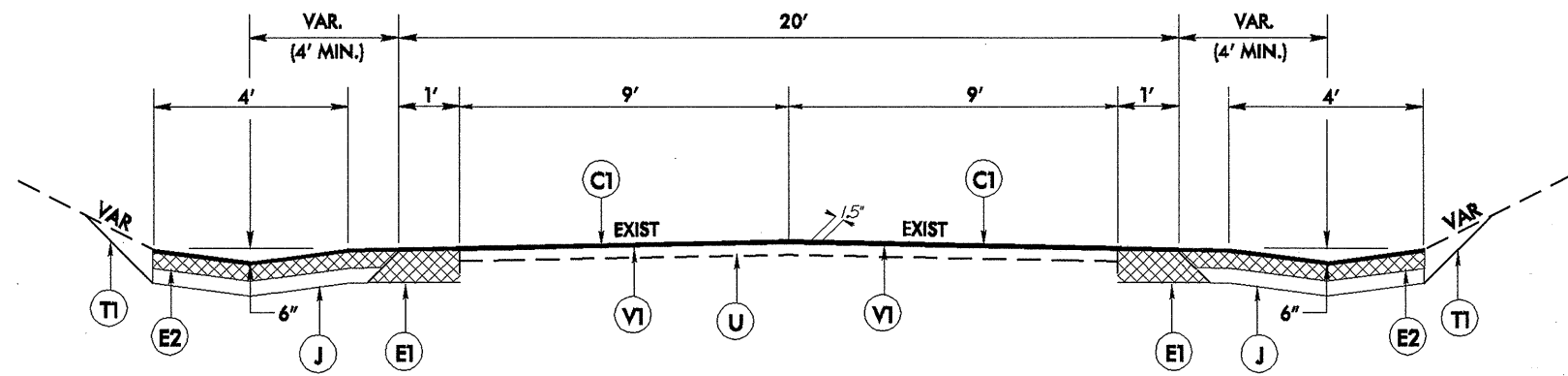
STATE HIGHWAY DESIGN ENGINEER

P.E.



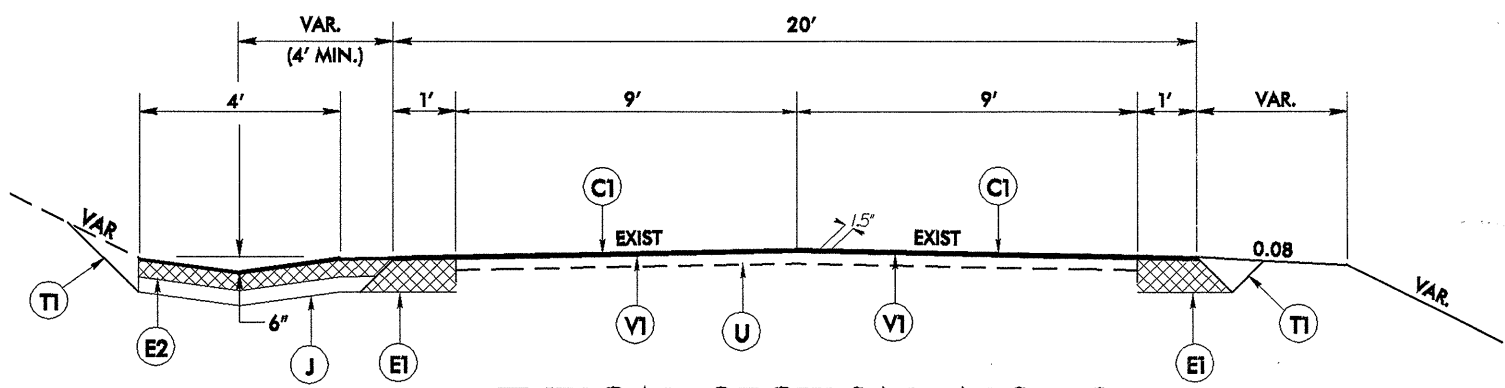
TYPICAL SECTION NO. 1

- L- STA. 0+00 TO STA. 1+25
- L- STA. 3+50 TO STA. 6+20
- L- STA. 16+10 TO STA. 17+20
- L- STA. 20+58 TO STA. 23+25
- L- STA. 46+50 TO STA. 48+16



TYPICAL SECTION NO. 2

- L- STA. 1+60 TO STA. 3+15
- L- STA. 17+50 TO STA. 19+05



TYPICAL SECTION NO. 3

- L- STA. 3+15 TO STA. 3+50
- L- STA. 6+20 TO STA. 11+30
- L- STA. 14+00 TO STA. 16+10
- L- STA. 17+20 TO STA. 17+50
- L- STA. 19+05 TO STA. 20+58
- L- STA. 23+25 TO STA. 46+50

PAVEMENT SCHEDULE	
C1	1 1/2" ASPHALT CONCRETE SURFACE COURSE, TYPE S 9.5 B, AT AN AVERAGE RATE OF 168 LBS. PER SQ. YD.
E1	8" ASPHALT CONCRETE BASE COURSE, TYPE B 25.0 B, AT AN AVERAGE RATE OF 456 LBS. PER SQ. YD. IN EACH OF TWO LAYERS.
E2	4" ASPHALT CONCRETE BASE COURSE, TYPE B 25.0 B, AT AN AVERAGE RATE OF 456 LBS. PER SQ. YD.
J	4" AGGREGATE BASE COURSE.
T1	EARTH MATERIAL
T2	SHOULDER RECONSTRUCTION
U	EXISTING ASPHALT PAVEMENT
V1	1 1/2" MILLING

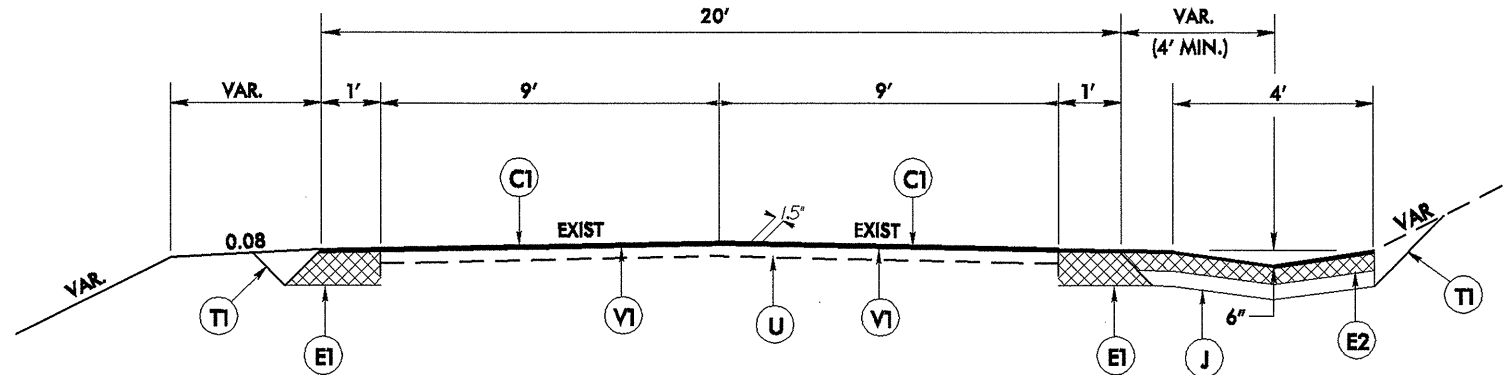
2006 ROADWAY ENGLISH STANDARD DRAWINGS

The following Roadway Standards as appear in "Roadway Standard Drawings" Highway Design Branch N. C. Department of Transportation - Raleigh, N. C., Dated July 18, 2006 are applicable to this project and by reference hereby are considered a part of these plans:

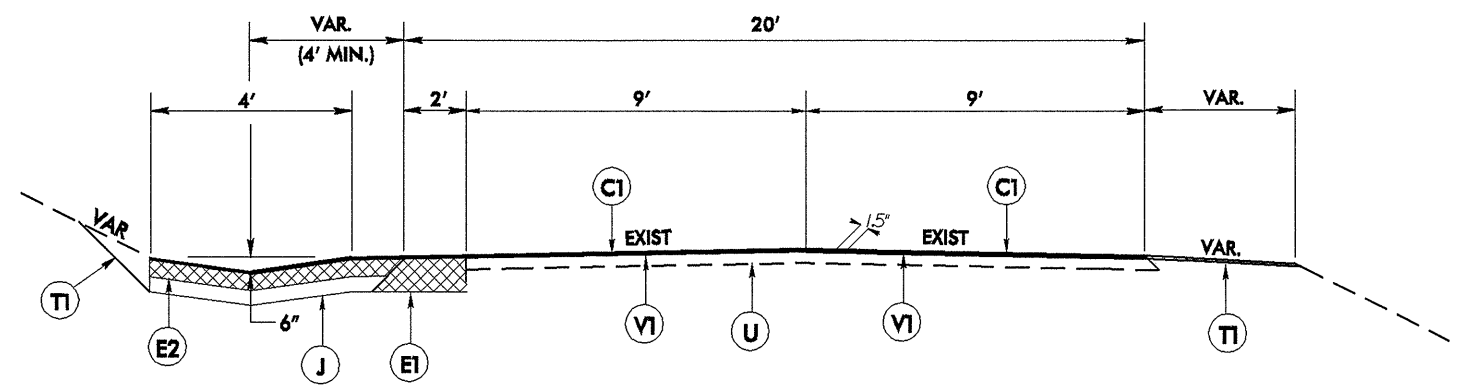
- | STD.NO. | TITLE |
|---|---|
| DIVISION 3 - PIPE CULVERTS | |
| 300.01 | Method of Pipe Installation - Method 'A' |
| 310.02 | Parallel Pipe End Section - Precast Concrete Section for 15" to 24" Pipe |
| 310.04 | Parallel Pipe End Section - Prefabricated Steel Section for 15" to 24" Pipe |
| DIVISION 6 - ASPHALT BASES AND PAVEMENTS | |
| 654.01 | Pavement Repairs |
| DIVISION 8 - INCIDENTALS | |
| 840.29 | Frames and Narrow Slot Flat Grates |
| 840.35 | Traffic Bearing Grated Drop Inlet - for Cast Iron Double Frame and Grates |
| 840.46 | Traffic Bearing Precast Drainage Structure |
| 840.66 | Drainage Structure Steps |
| 876.02 | Guide for Rip Rap at Pipe Outlets |

R-5158: NC 194 FROM US 19 E TO US 221		
DIVISION II AVERY COUNTY		
REVISIONS	INIT.	DATE
SCALE: N/A		DATE: 4/2009
PREPARED BY: J. L. LAWS		
REVIEWED BY:		
REVIEWED BY:		
N.C. DEPARTMENT of TRANSPORTATION DIVISION of HIGHWAYS DIVISION ELEVEN		

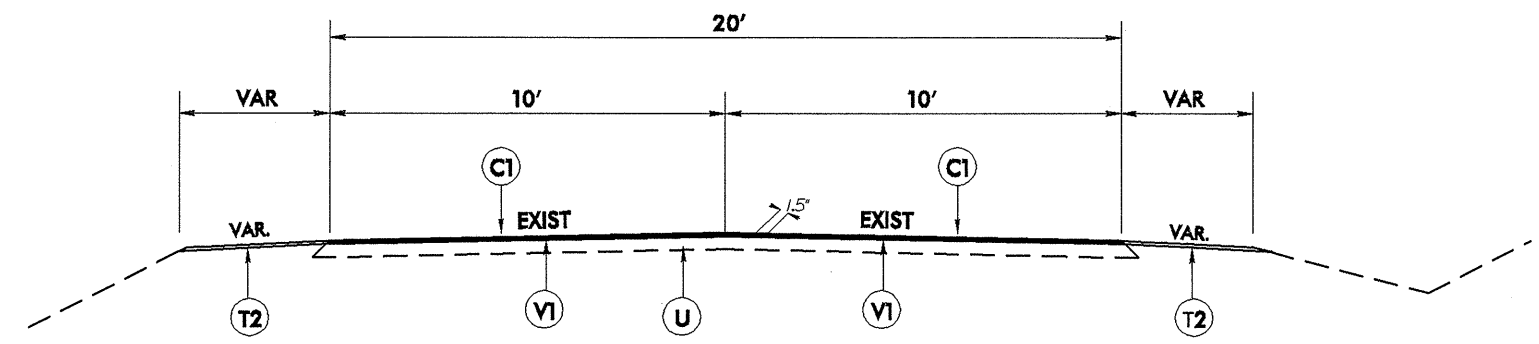
29-MAY-2009 13:47
 S:\Contracts\Resurfacing Projects\Division 11\R-5158\VR-5158.DOC.TYP_041409.dgn



TYPICAL SECTION NO. 4
-L- STA. 1+25 TO STA. 1+60



TYPICAL SECTION NO. 5
-L- STA. 11+30 TO STA. 14+00

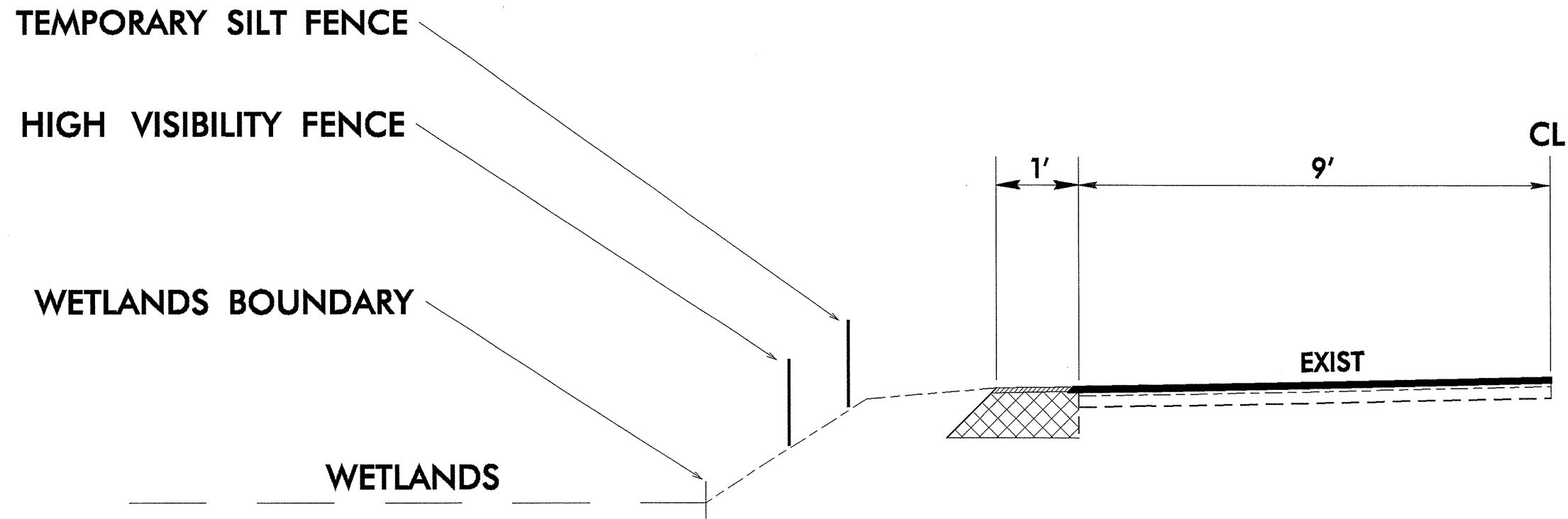


TYPICAL SECTION NO. 6
-L- STA. 48+16 TO STA. 221+23

PAVEMENT SCHEDULE	
C1	1½" ASPHALT CONCRETE SURFACE COURSE, TYPE S 9.5 B, AT AN AVERAGE RATE OF 168 LBS. PER SQ. YD.
E1	8" ASPHALT CONCRETE BASE COURSE, TYPE B 25.0 B, AT AN AVERAGE RATE OF 456 LBS. PER SQ. YD. IN EACH OF TWO LAYERS.
E2	4" ASPHALT CONCRETE BASE COURSE, TYPE B 25.0 B, AT AN AVERAGE RATE OF 456 LBS. PER SQ. YD.
J	4" AGGREGATE BASE COURSE.
T1	EARTH MATERIAL
T2	SHOULDER RECONSTRUCTION
U	EXISTING ASPHALT PAVEMENT
V1	1½" MILLING


R-5158: NC 194 FROM US 19 E TO US 221			
DIVISION II		AVERY COUNTY	
REVISIONS	INIT.	DATE	SCALE: N/A DATE: 4/2009 PREPARED BY: J. L. LAWS REVIEWED BY:
N.C. DEPARTMENT of TRANSPORTATION DIVISION of HIGHWAYS DIVISION ELEVEN			

03-JUN-2009 09:42
 s:\projects\contracts\resurfacing_projects\division_11\5158\5158-ddc-tp_041409.dgn



WETLANDS DETAIL

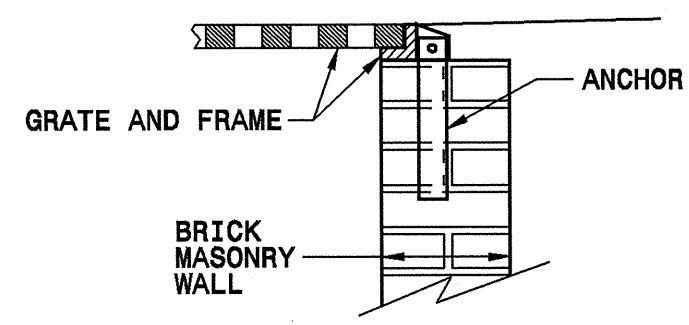
WETLANDS STATIONS
 5+90 Rt TO 7+25 Rt
 19+50 Rt TO 24+00 Rt
 20+60 Lt TO 22+50 Lt

R-5158: NC 194 FROM US 19 E TO US 22I		
DIVISION II AVERY COUNTY		
REVISIONS	INT.	DATE
N.C. DEPARTMENT of TRANSPORTATION DIVISION of HIGHWAYS DIVISION ELEVEN		SCALE: N/A DATE: 4/2009 PREPARED BY: REVIEWED BY: REVIEWED BY:

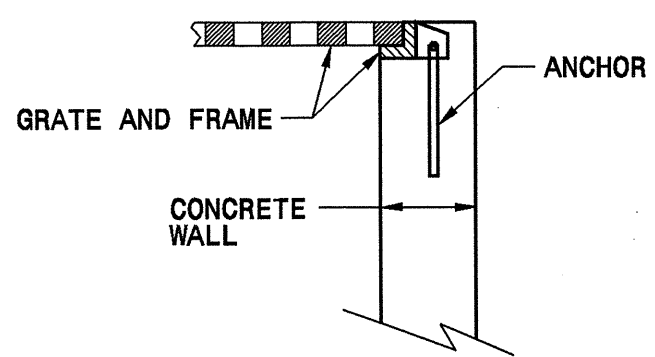
STATE OF NORTH CAROLINA
DEPT. OF TRANSPORTATION
DIVISION OF HIGHWAYS
RALEIGH, N.C.

ENGLISH DETAIL DRAWING FOR
ANCHORAGE FOR FRAMES
BRICK/CONCRETE/PRECAST CONCRETE

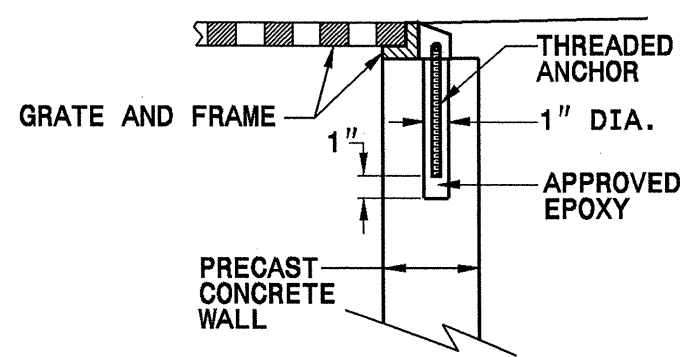
SHEET 1 OF 1
840D25



BRICK MASONRY CONSTRUCTION



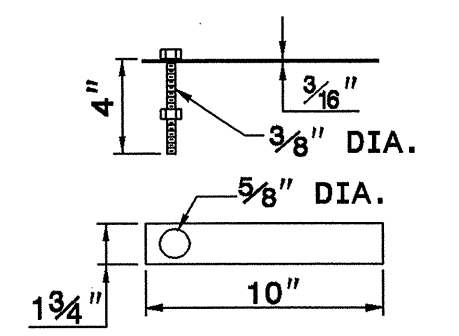
CONCRETE CONSTRUCTION



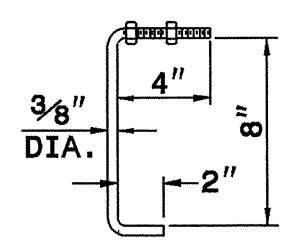
PRECAST CONCRETE CONSTRUCTION

DETAIL SHOWING ANCHORAGE OF FRAME FOR GRATED DROP INLET

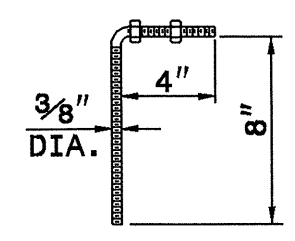
NOTE:
CONSTRUCT GRATED DROP INLET TO COINCIDE WITH NORMAL OR SUPERELEVATED SHOULDER OR PAVEMENT SLOPE.



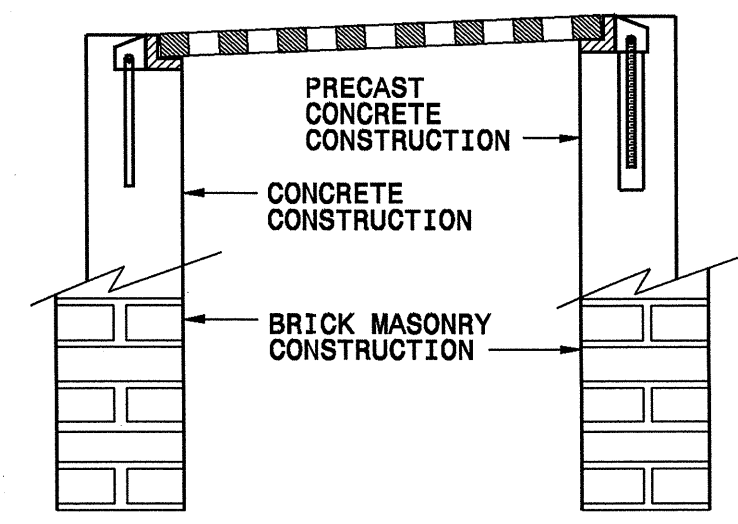
MASONRY ANCHOR
3/8" DIA. BOLT WITH PLATE



CONCRETE ANCHOR
3/8" DIA. BENT BAR



PRECAST CONCRETE ANCHOR
3/8" DIA. BENT BAR



FRAME AND GRATE INSTALLATION FOR NORMAL CROWN AND SUPERELEVATED SECTIONS

STATE OF NORTH CAROLINA
DEPT. OF TRANSPORTATION
DIVISION OF HIGHWAYS
RALEIGH, N.C.

ENGLISH DETAIL DRAWING FOR
ANCHORAGE FOR FRAMES
BRICK/CONCRETE/PRECAST CONCRETE

SHEET 1 OF 1
840D25

PROJECT SERVICES UNIT
STANDARDS AND SPECIAL DESIGN
Office 919-250-4128 FAX 919-250-4119

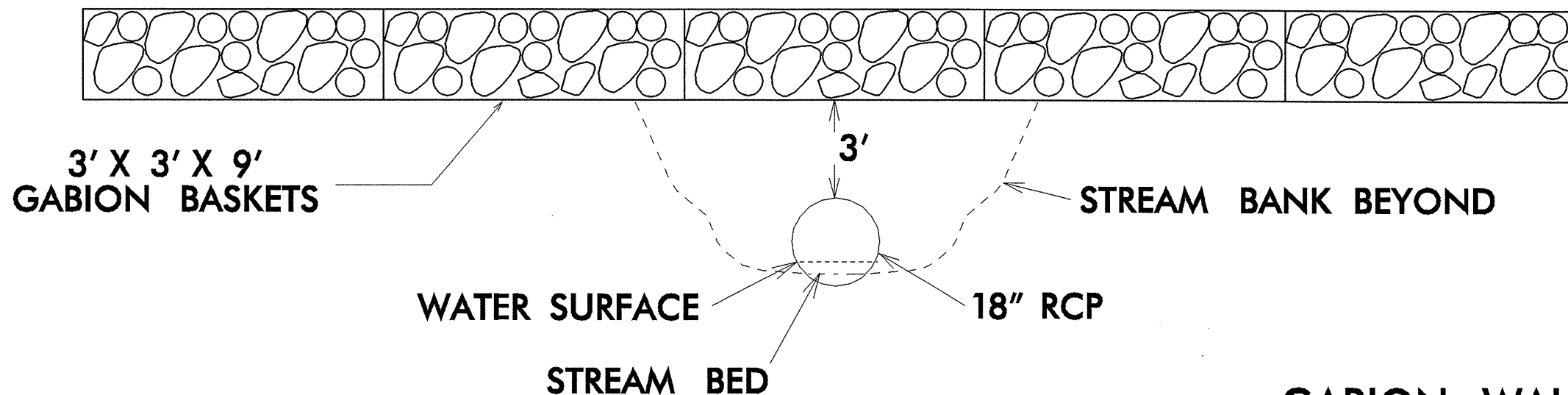
SEE PLATE FOR TITLE

ORIGINAL BY: 2008 STD 840.25 DATE: 07/18/08
MODIFIED BY: E.E. WARD DATE: 9/28/08
CHECKED BY: DATE:
FILE SPEC.:

29-MAY-2009 09:37
s:\contracts\contract\special_details\vertical\stds\06\stds to special_details\0840D25 anchorage for frames\0840d25.dgn
Jhowe-ron HT P5237501

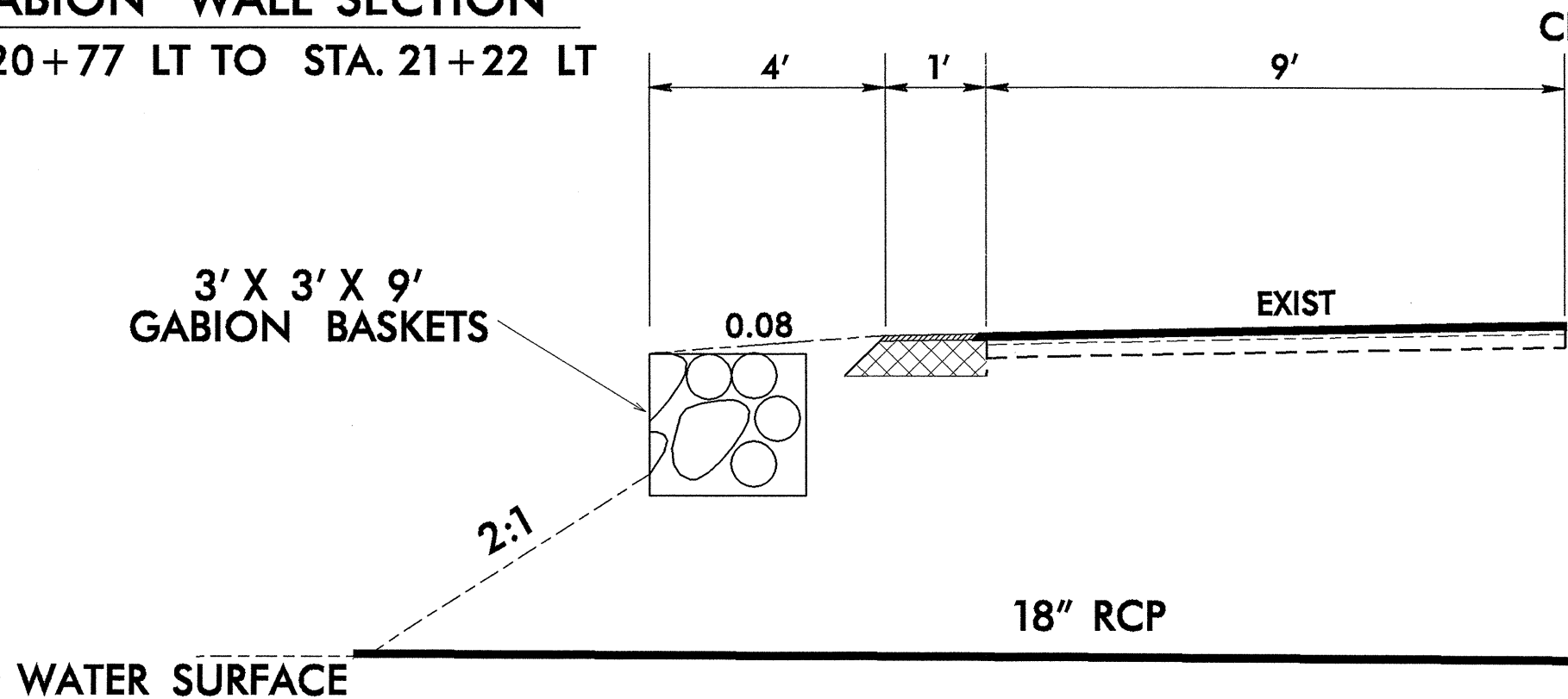
-L- SHOULDER POINT

NC 194



GABION WALL DETAIL
STA. 20+77 LT TO STA. 21+22 LT

GABION WALL SECTION
STA. 20+77 LT TO STA. 21+22 LT



NOT TO SCALE

R-5158: NC 194 FROM US 19E TO US 22I			
DIVISION II AVERY COUNTY			
REVISIONS	INIT.	DATE	
N.C. DEPARTMENT of TRANSPORTATION DIVISION of HIGHWAYS DIVISION ELEVEN		SCALE: N/A	DATE: 5/2009
PREPARED BY:	REVIEWED BY:	REVIEWED BY:	REVIEWED BY:

PROJECT NO.	SHEET NO.	TOTAL NO.
R-5158	3-A	

SUMMARY OF QUANTITIES

PROJECT NO	COUNTY	MAP NO	ROUTE	DESCRIPTION	TYP	FINAL SURFACE TESTING REQUIRED	LENGTH MI	WIDTH FT	GRADING LS	UNCLASSIFIED EXCAVATION CY	BORROW EXCAVATION CY	UNDERCUT EXCAVATION CY	SELECT MATERIAL, CLASS IV TON	FOUNDATION CONDITIONING MATERIAL, MINOR STRUCTURES TON	15" BIT COATED CS PIPE LF	18" RC PIPE CULVERTS, CLASS III LF	24" RC PIPE CULVERTS, CLASS III LF	15" PIPE END SECTIONS EA	AGGREGATE BASE COURSE TONS	INCIDENTAL STONE BASE TONS	SHOULDER RECONSTRUCTION SMI	1 1/2" MILLING SY	BASE COURSE, B25.0B TONS	SURFACE COURSE, S9.5B TONS	PG 64-22 PLANT MIX TONS
R-5158	Avery	1	NC 194	FROM US 19 E TO SR 1106	1,2,3,4,5	No	0.9	20	1	3,700	2,120	100	300	56	150	290	80	4	650	100		9,700	1,033	943	101
R-5158	Avery	2	NC 194	FROM SR 1106 TO US 221	6	No	3.3	20												100	6.6	38,460		3,273	196
TOTAL FOR PROJ NO. R-5158							4.2		1	3,700	2,120	100	300	56	150	290	80	4	650	200	6.6	48,160	1,033	4,216	297
GRAND TOTAL							4.2		1	3,700	2,120	100	300	56	150	290	80	4	650	200	6.6	48,160	1,033	4,216	297

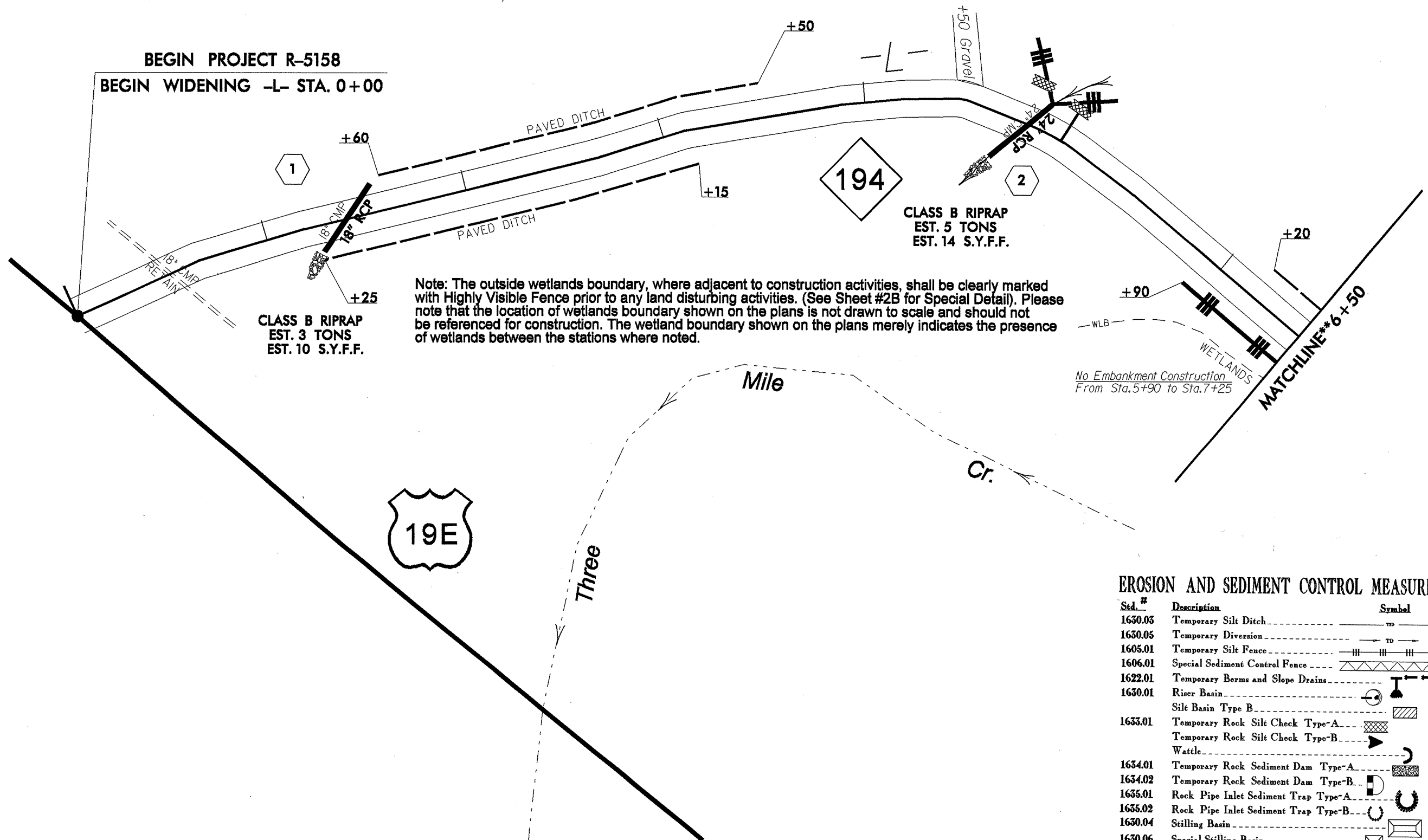
PROJECT NO	COUNTY	MAP NO	ROUTE	DESCRIPTION	TYP	LENGTH MI	WIDTH FT	AC PLANT MIX (REPAIR) TONS	MASONRY DRAINAGE STRUCTURES EA	FRAME WITH TWO GRATES, STD. 840.29 EA	GABION WALL SF	TEMP SILT FENCE LF	STONE FOR EROSION CONTROL, CLASS B TON	SEDIMENT CONTROL STONE TON	TEMPORARY MULCHING ACR	SEED FOR TEMP SEEDING LB	SAFETY FENCE LF	SILT EXCAVATION CY	MATTING FOR EROSION CONTROL SY	1/4" HARDWARE CLOTH LF	SEED & MULCHING AC	RESPONSE FOR EROSION CONTROL EA	RIP RAP, CLASS B TON	FILTER FABRIC FOR DRAINAGE SY
R-5158	Avery	1	NC 194	FROM US 19 E TO SR 1106	1,2,3,4,5	0.9	20	50	7	7	216	1,800	150	150	1.00	20.0	1,150	100	500	250	1.90	5	34	108
R-5158	Avery	2	NC 194	FROM SR 1106 TO US 221	6	3.3	20														3.20			
TOTAL FOR PROJ NO. R-5158						4.2		50	7	7	216	1,800	150	150	1.00	20.0	1,150	100	500	250	5.10	5	34	108
GRAND TOTAL						4.2		50	7	7	216	1,800	150	150	1.00	20.0	1,150	100	500	250	5.10	5	34	108

POLYUREA AND PAINT QUANTITIES

PROJECT NO	COUNTY	MAP NO	ROUTE	DESCRIPTION	4589000000-N	4810000000-E		4847000000-E		4905000000-N
					TRAFFIC CONTROL	4" WHITE PAINT	4" YELLOW PAINT	4" WHITE POLYUREA (Highly Reflective Elements)	4" YELLOW POLYUREA (Highly Reflective Elements)	SNOW PLOWABLE MARKERS
NO		NO			LS	LF	LF	LF	LF	EA
R-5158	Avery	1	NC 194	FROM US 19 E TO SR 1106	1.00	9,632	9,632	9,632	9,632	120
R-5158	Avery	2	NC 194	FROM SR 1106 TO US 221	*	34,848	34,848	34,848	34,848	436
TOTAL FOR PROJ NO. R-5158					1	44,480	44,480	44,480	44,480	556
						88,960		88,960		
GRAND TOTAL					1	44,480	44,480	44,480	44,480	556
						88,960		88,960		

Note: Approximate quantities only. Unclassified Excavation, Borrow Excavation, Fine Grading, and Clearing and Gurbbing will be paid for at the contract lump sum price for "Grading."

PROJECT REFERENCE NO. R-5158	SHEET NO. 4
RW SHEET NO.	
ROADWAY DESIGN ENGINEER	HYDRAULICS ENGINEER



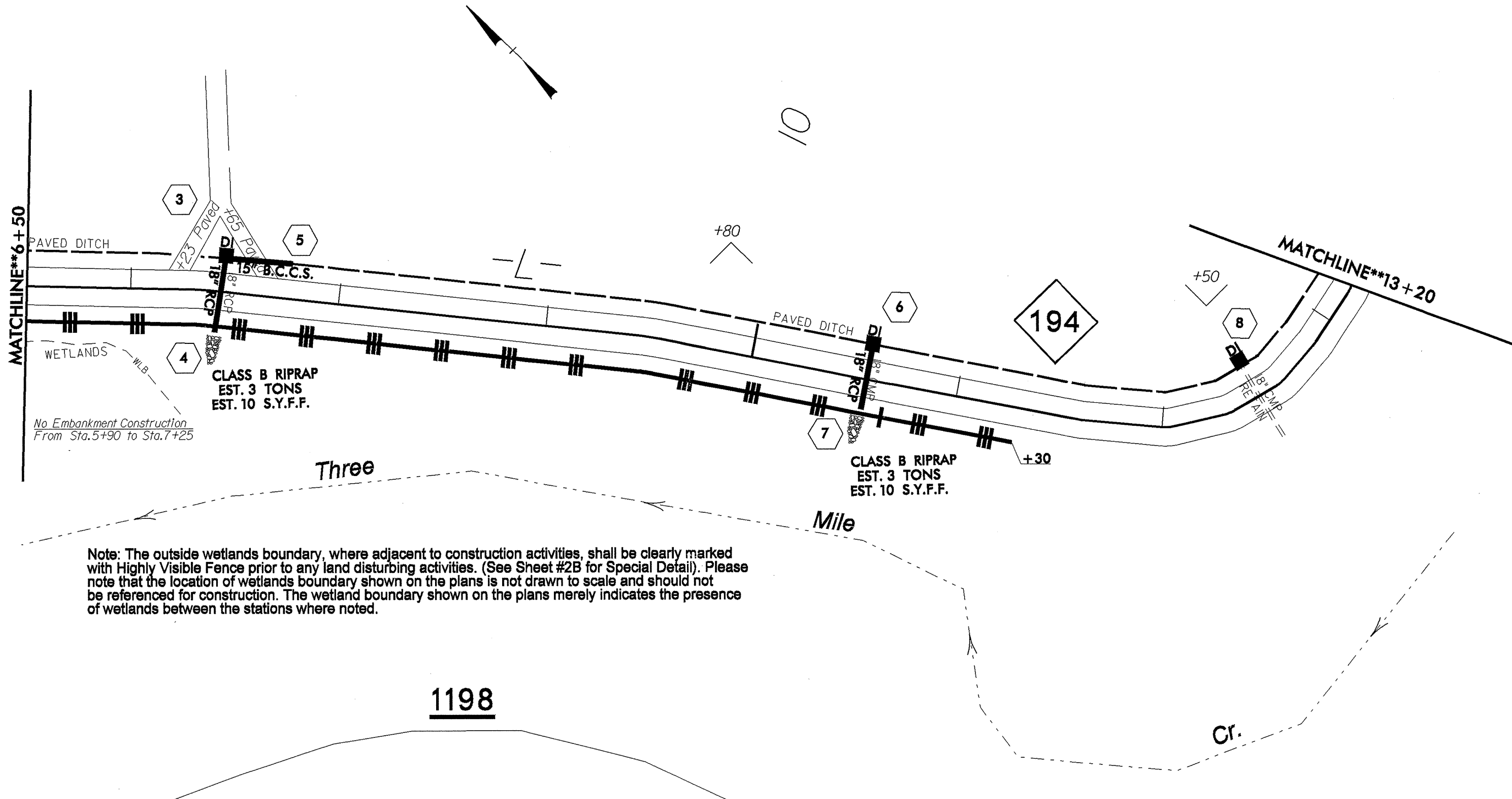
Note: The outside wetlands boundary, where adjacent to construction activities, shall be clearly marked with Highly Visible Fence prior to any land disturbing activities. (See Sheet #2B for Special Detail). Please note that the location of wetlands boundary shown on the plans is not drawn to scale and should not be referenced for construction. The wetland boundary shown on the plans merely indicates the presence of wetlands between the stations where noted.

EROSION AND SEDIMENT CONTROL MEASURES

Std. #	Description	Symbol
1630.03	Temporary Silt Ditch	--- ---
1630.05	Temporary Diversion	--- --- ---
1605.01	Temporary Silt Fence	
1606.01	Special Sediment Control Fence	--- --- ---
1622.01	Temporary Berms and Slope Drains	--- --- ---
1630.01	Riser Basin	⊙
	Silt Basin Type B	⊙
1633.01	Temporary Rock Silt Check Type-A	⊙
	Temporary Rock Silt Check Type-B	⊙
	Wattle	⊙
1634.01	Temporary Rock Sediment Dam Type-A	⊙
1634.02	Temporary Rock Sediment Dam Type-B	⊙
1635.01	Rock Pipe Inlet Sediment Trap Type-A	⊙
1635.02	Rock Pipe Inlet Sediment Trap Type-B	⊙
1630.04	Stilling Basin	⊙
1630.06	Special Stilling Basin	⊙

8/17/99
03-JUN-2009 07:30
S:\Contracts\resurfacing projects\division 11\--5158\--5158.ddc.psh04_041409.dgn

PROJECT REFERENCE NO. R-5158	SHEET NO. 5
RW SHEET NO.	
ROADWAY DESIGN ENGINEER	HYDRAULICS ENGINEER



Note: The outside wetlands boundary, where adjacent to construction activities, shall be clearly marked with Highly Visible Fence prior to any land disturbing activities. (See Sheet #2B for Special Detail). Please note that the location of wetlands boundary shown on the plans is not drawn to scale and should not be referenced for construction. The wetland boundary shown on the plans merely indicates the presence of wetlands between the stations where noted.

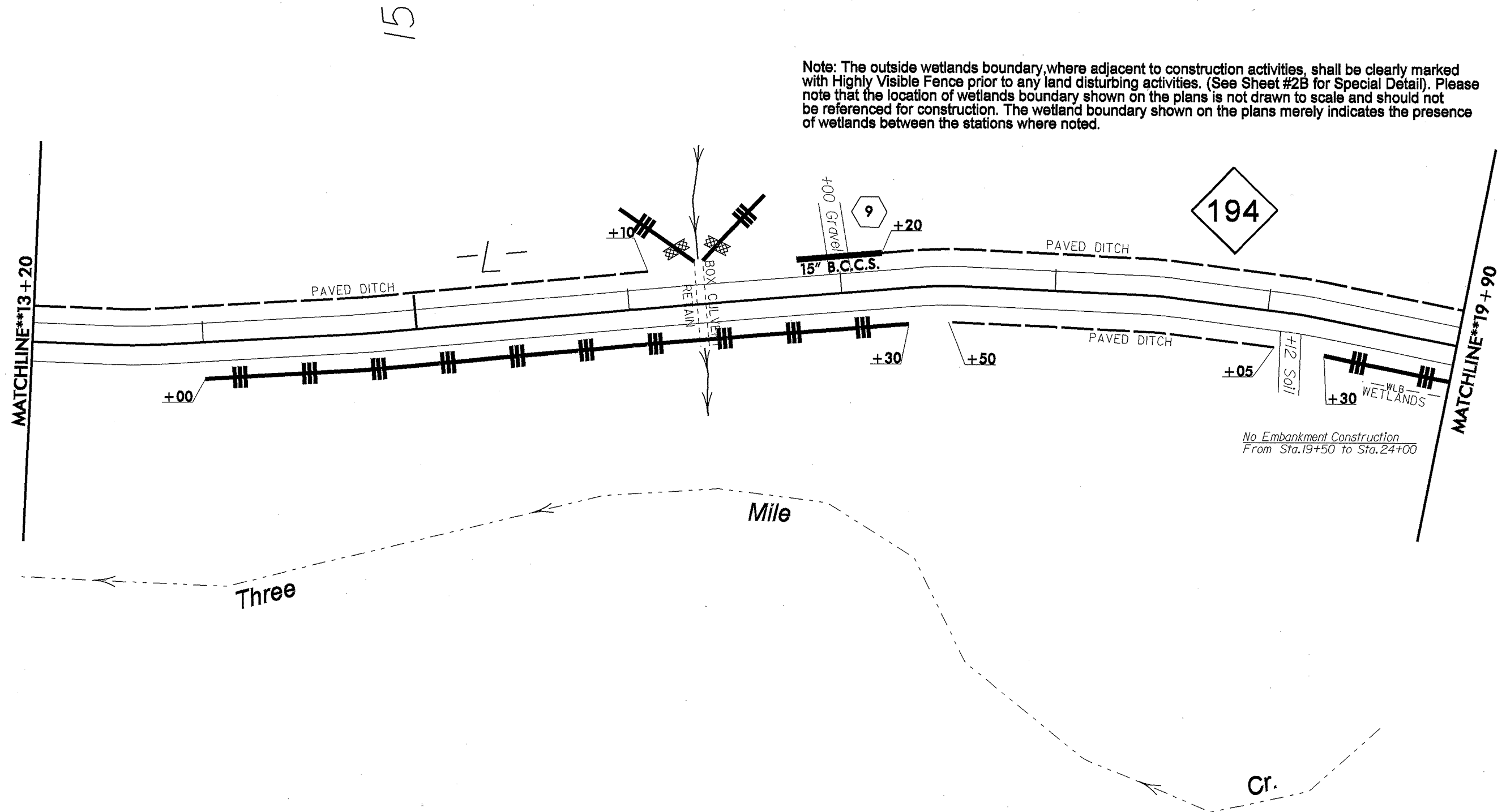
1198

Cr.

03-JUN-2009 07:21
 st:\contracts\contracts\resurfacing projects\division 11\5158\5158.dwg
 8/17/99

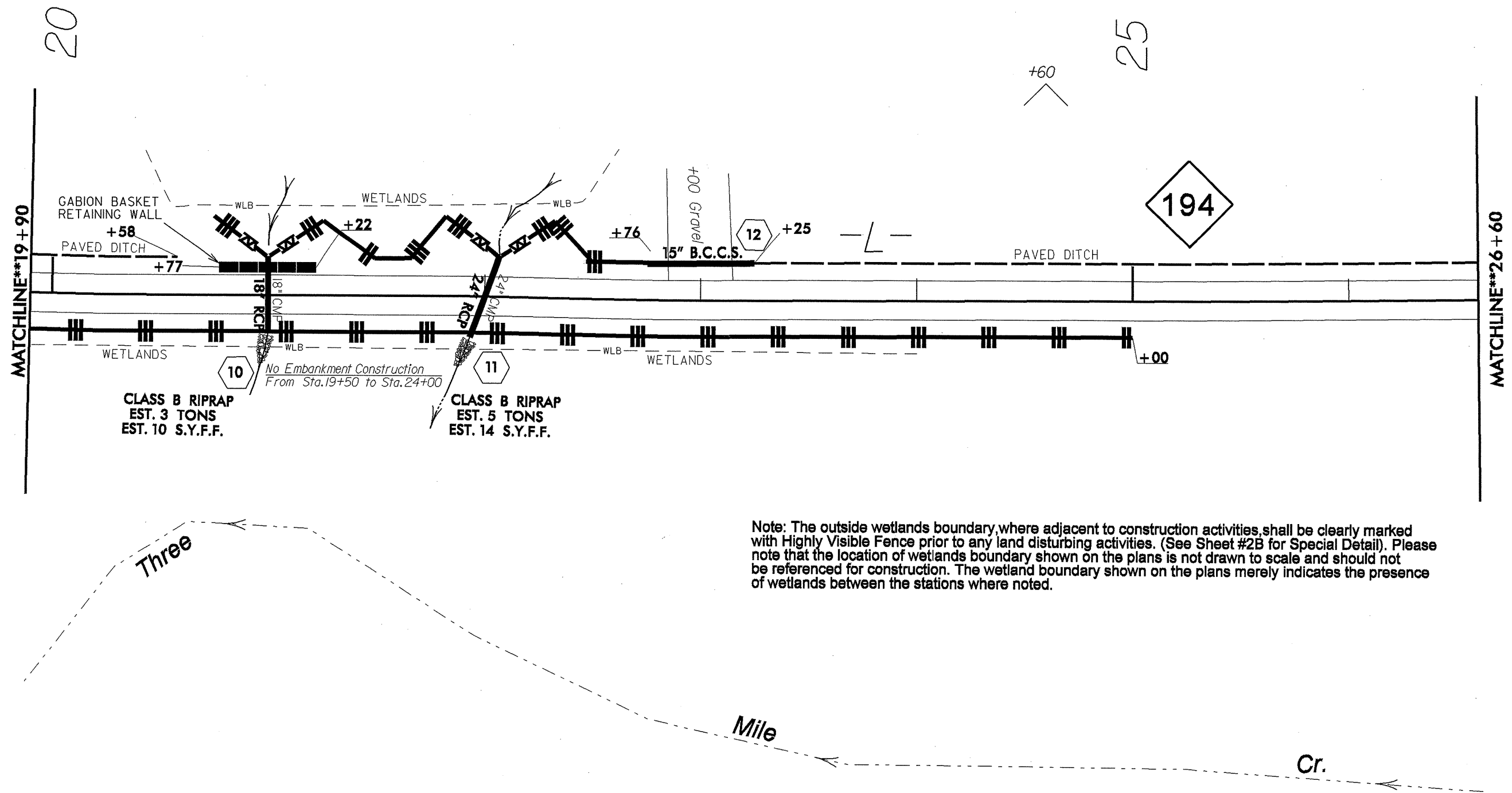
PROJECT REFERENCE NO. R-5158	SHEET NO. 6
RW SHEET NO.	
ROADWAY DESIGN ENGINEER	HYDRAULICS ENGINEER

Note: The outside wetlands boundary where adjacent to construction activities, shall be clearly marked with Highly Visible Fence prior to any land disturbing activities. (See Sheet #2B for Special Detail). Please note that the location of wetlands boundary shown on the plans is not drawn to scale and should not be referenced for construction. The wetland boundary shown on the plans merely indicates the presence of wetlands between the stations where noted.



8/17/99
 03-JUN-2009 07:31
 s:\contracts\contracts\resurfacing projects\division 11\1-5158\1-5158-ddc-psf06_041489.dgn

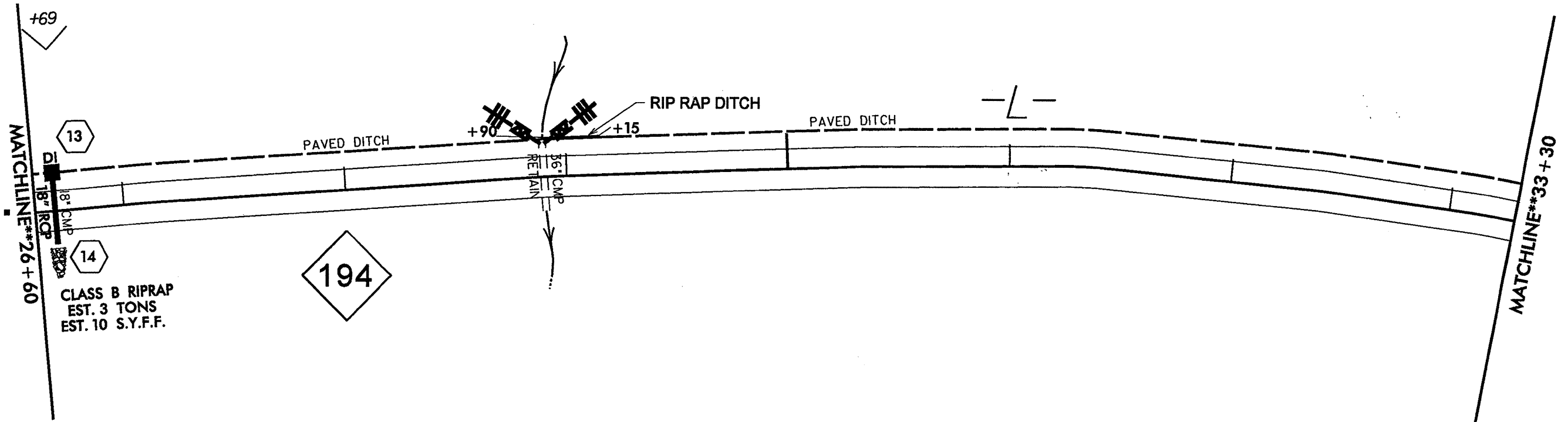
PROJECT REFERENCE NO. R-5158	SHEET NO. 7
RW SHEET NO.	
ROADWAY DESIGN ENGINEER	HYDRAULICS ENGINEER



03-JUN-2009 07:31
 s:\contracts\contracts\resurfacing_projects\division_11\11-5158\11-5158.ddc_psh07_041409.dgn
 8/17/99

PROJECT REFERENCE NO. <i>R-5158</i>	SHEET NO. <i>8</i>
RW SHEET NO.	
ROADWAY DESIGN ENGINEER	HYDRAULICS ENGINEER

30



MATCHLINE**26+60

13

14

CLASS B RIPRAP
EST. 3 TONS
EST. 10 S.Y.F.F.

194

+90

+15

36" CMP
RETAIN

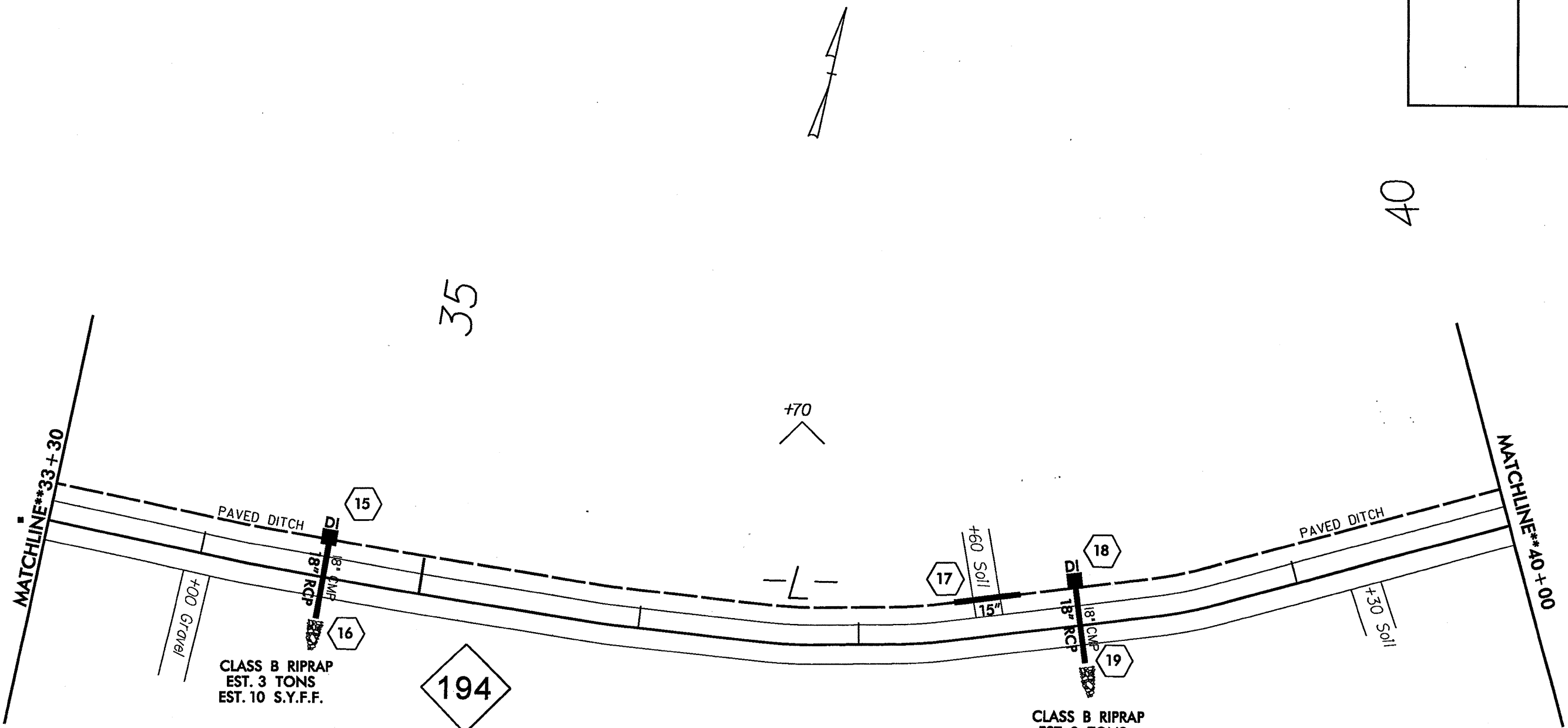
RIP RAP DITCH

PAVED DITCH

-L-

MATCHLINE**33+30

PROJECT REFERENCE NO. <i>R-5158</i>	SHEET NO. 9
RW SHEET NO.	
ROADWAY DESIGN ENGINEER	HYDRAULICS ENGINEER



CLASS B RIPRAP
EST. 3 TONS
EST. 10 S.Y.F.F.

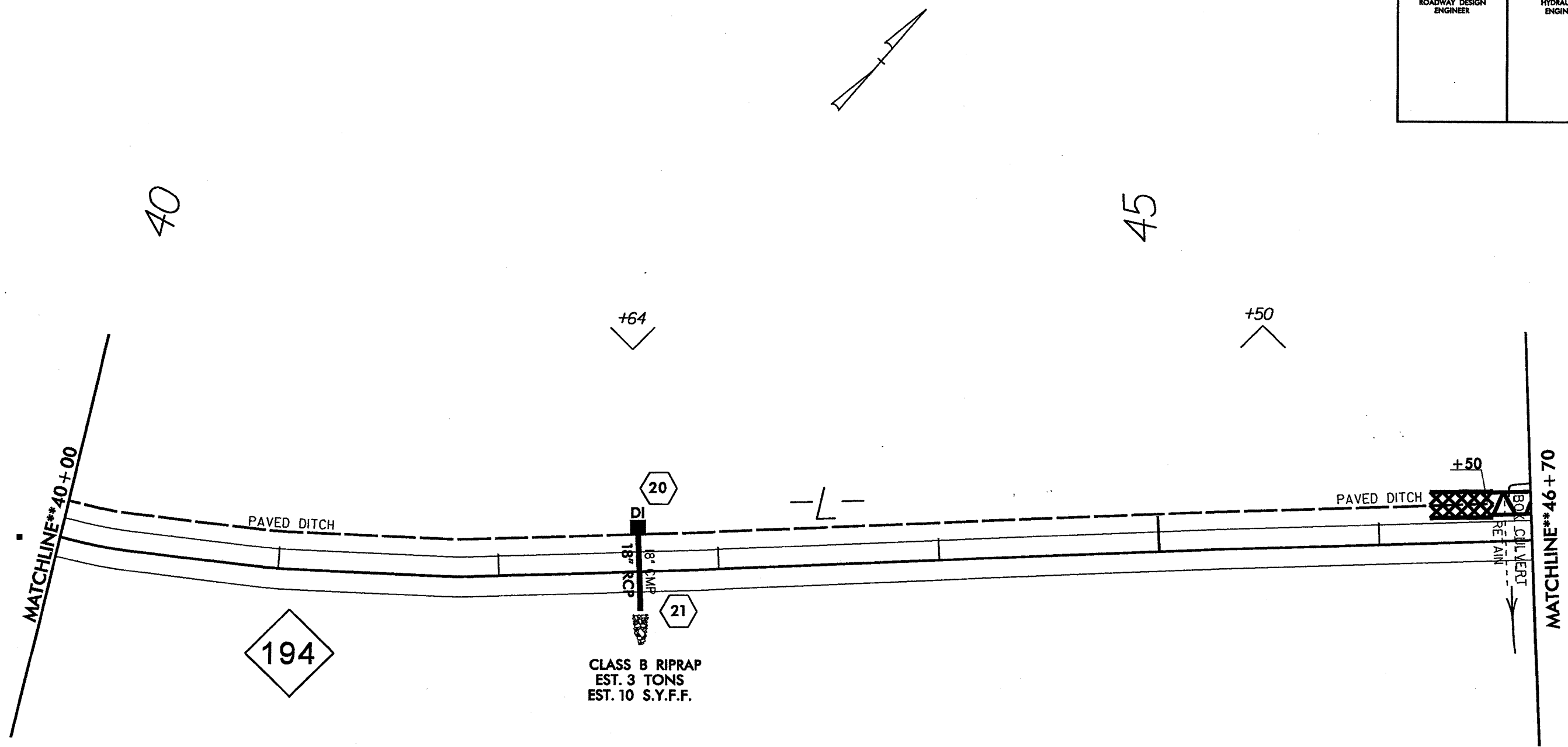
CLASS B RIPRAP
EST. 3 TONS
EST. 10 S.Y.F.F.

27-MAY-2009 15:25
 d:\my documents\projects\economic stimulus projects\nc194\very\dgn\r-5158-ddc.psh09_041409.dgn
 8/17/99

8/17/99

27-MAY-2009 15:25
c:\my documents\projects\project manager\economic stimulus projects\nci194aver\vdgn\vr-5158.dde.psh10_041409.dgn
11:45 AM AT PITCHER

PROJECT REFERENCE NO. <i>R-5158</i>		SHEET NO. <i>10</i>	
RW SHEET NO.			
ROADWAY DESIGN ENGINEER		HYDRAULICS ENGINEER	

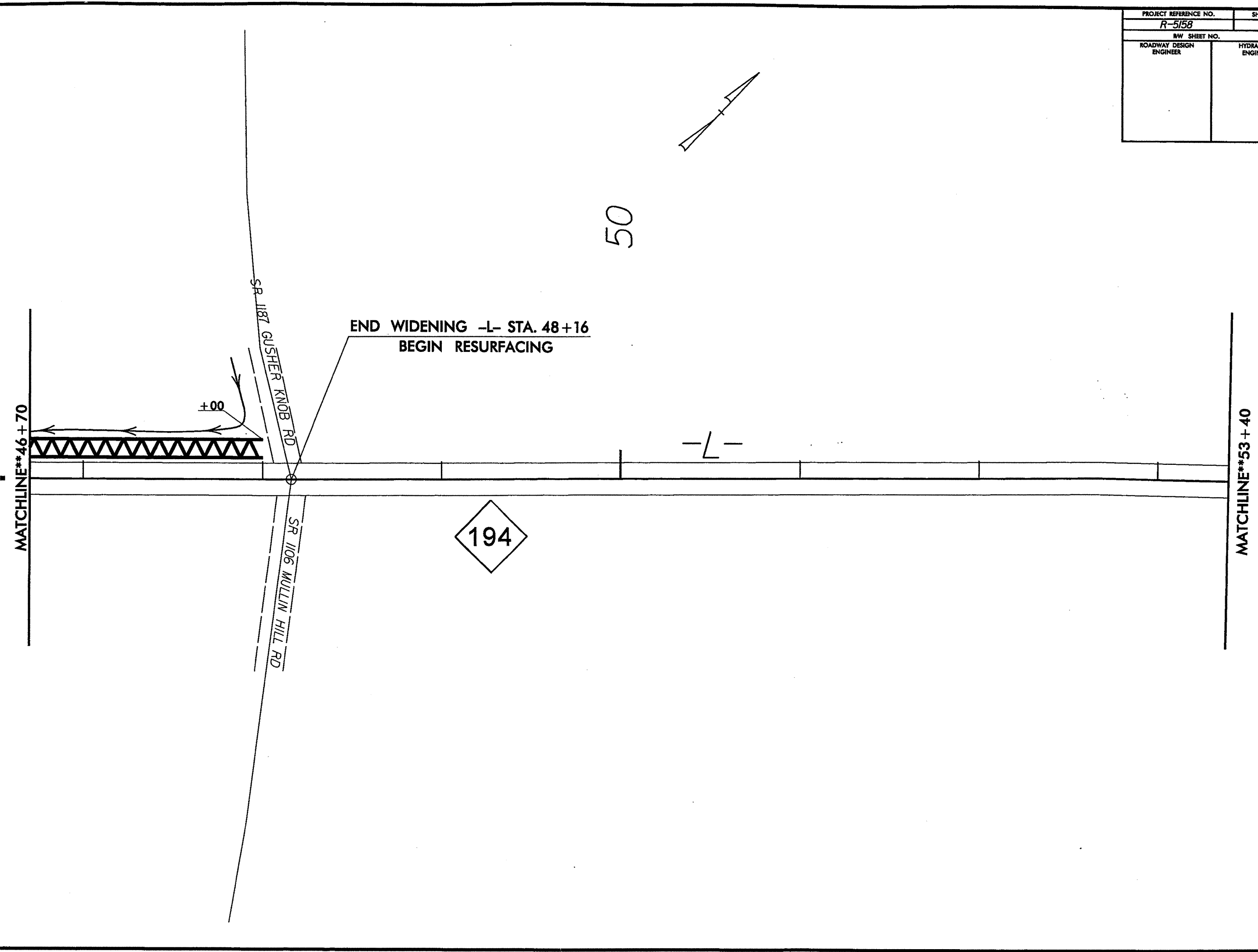


CLASS B RIPRAP
EST. 3 TONS
EST. 10 S.Y.F.F.

BOOK CULVERT
RETAIN

27 MAY 2009 15:25
C:\msdcs\project\manager\economic stimulus projects\nci194\averj\dgn\5158.ddc.psh\11.041409.dgn
8/17/99

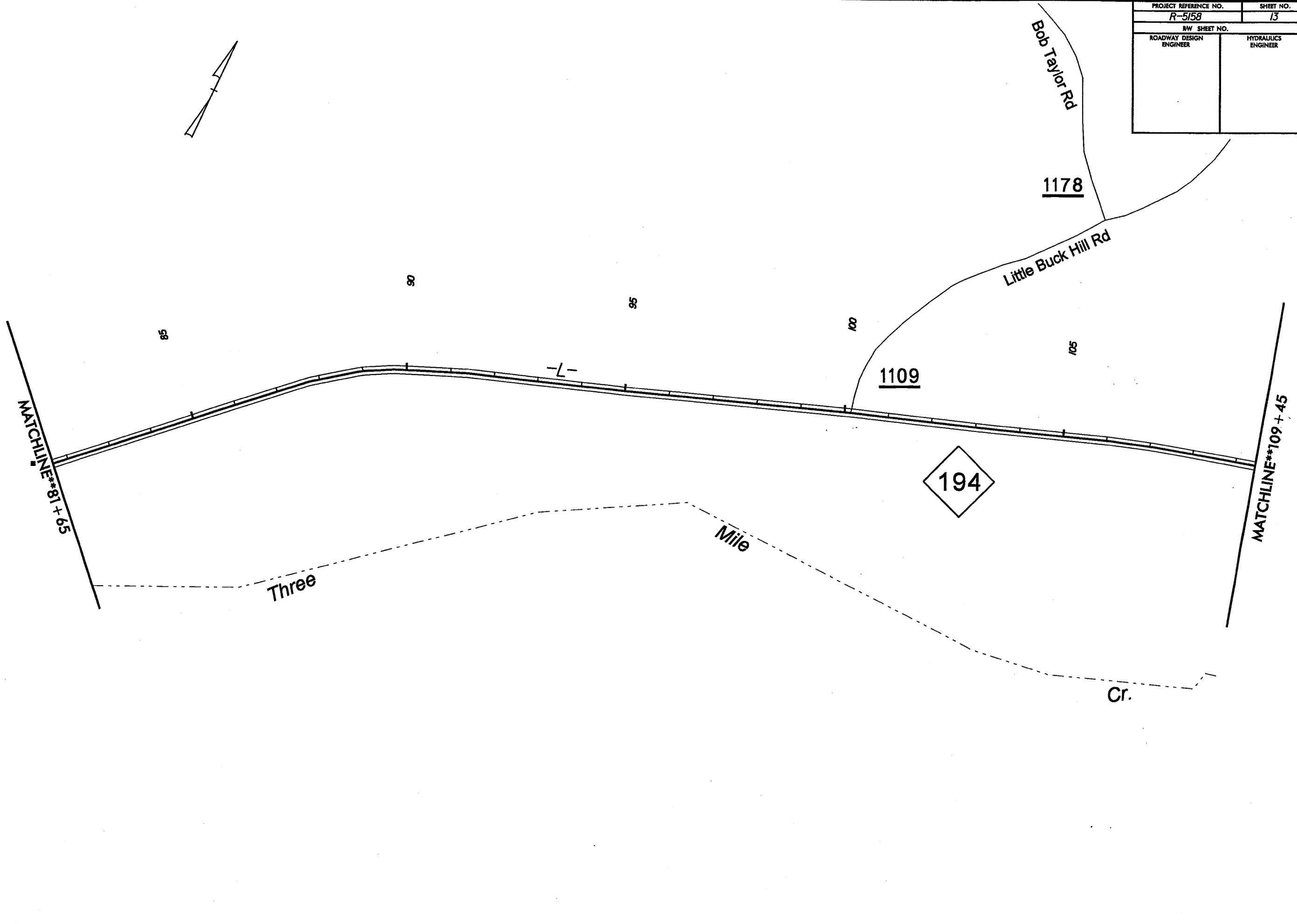
PROJECT REFERENCE NO.	SHEET NO.
R-5158	11
NW SHEET NO.	
ROADWAY DESIGN ENGINEER	HYDRAULICS ENGINEER



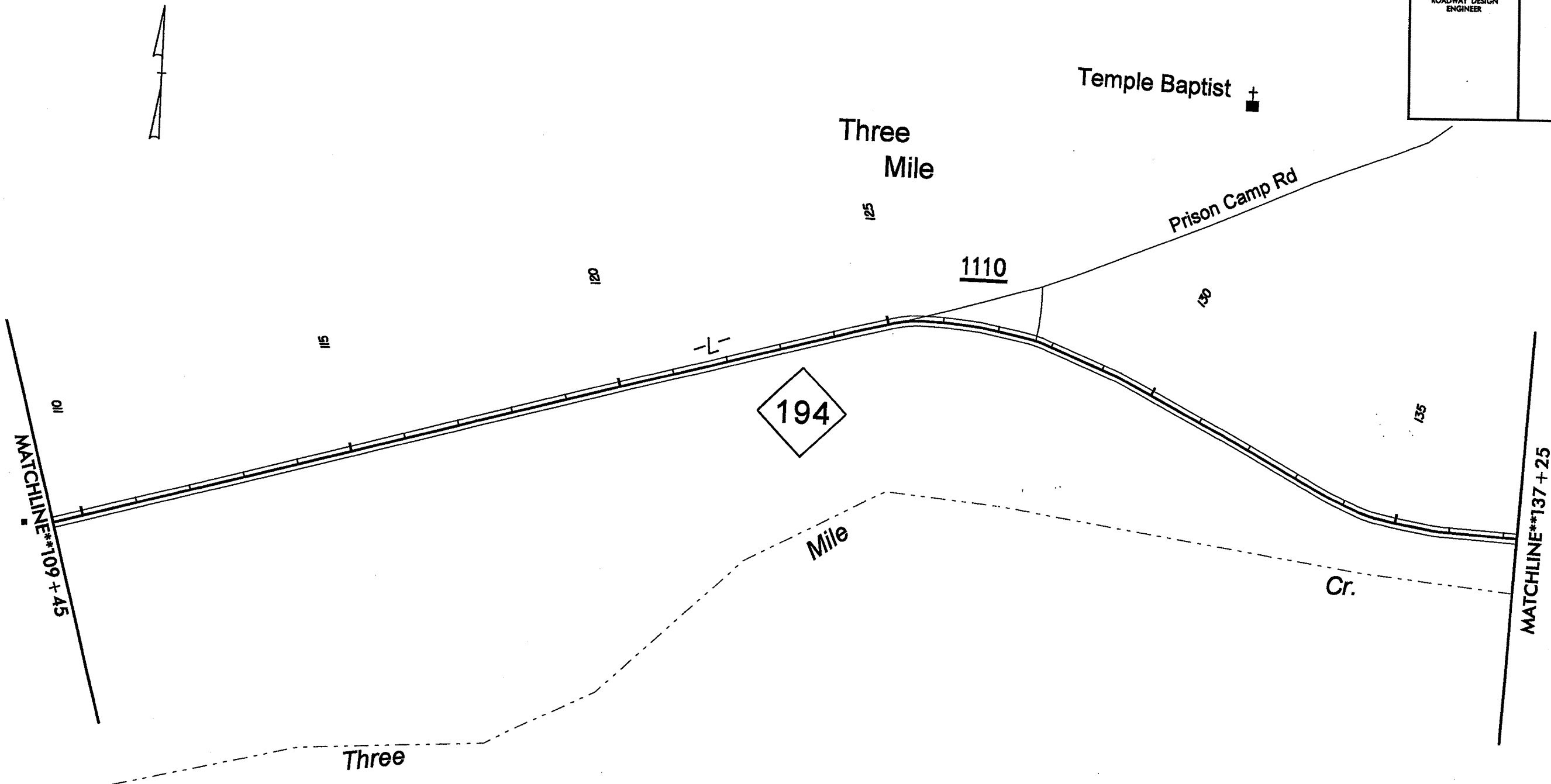
8/17/99

25-MAY-2009 16:10
c:\my documents\project manager\economic stimulus projects\NC194Avery\DGNV-5158-ddc-psh13.041409.dgn

PROJECT REFERENCE NO. <i>R-5158</i>	SHEET NO. <i>13</i>
RW SHEET NO.	
ROADWAY DESIGN ENGINEER	HYDRAULICS ENGINEER

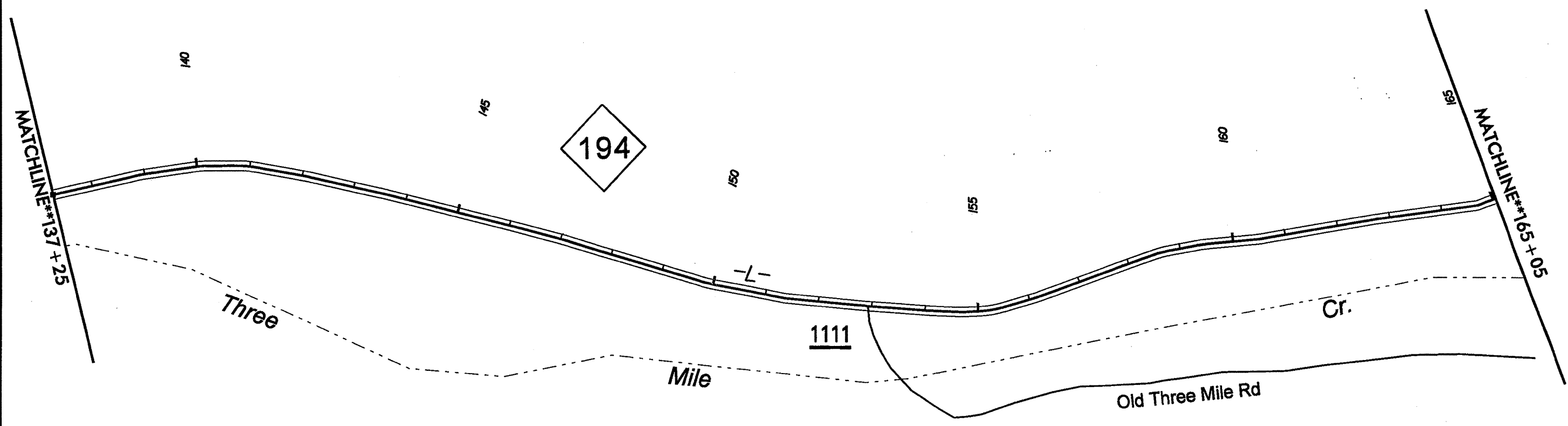


PROJECT REFERENCE NO.		SHEET NO.	
R-5158		14	
RW SHEET NO.			
ROADWAY DESIGN ENGINEER		HYDRAULICS ENGINEER	



8/17/99

PROJECT REFERENCE NO. <i>R-5158</i>	SHEET NO. <i>15</i>
RW SHEET NO.	
ROADWAY DESIGN ENGINEER	HYDRAULICS ENGINEER

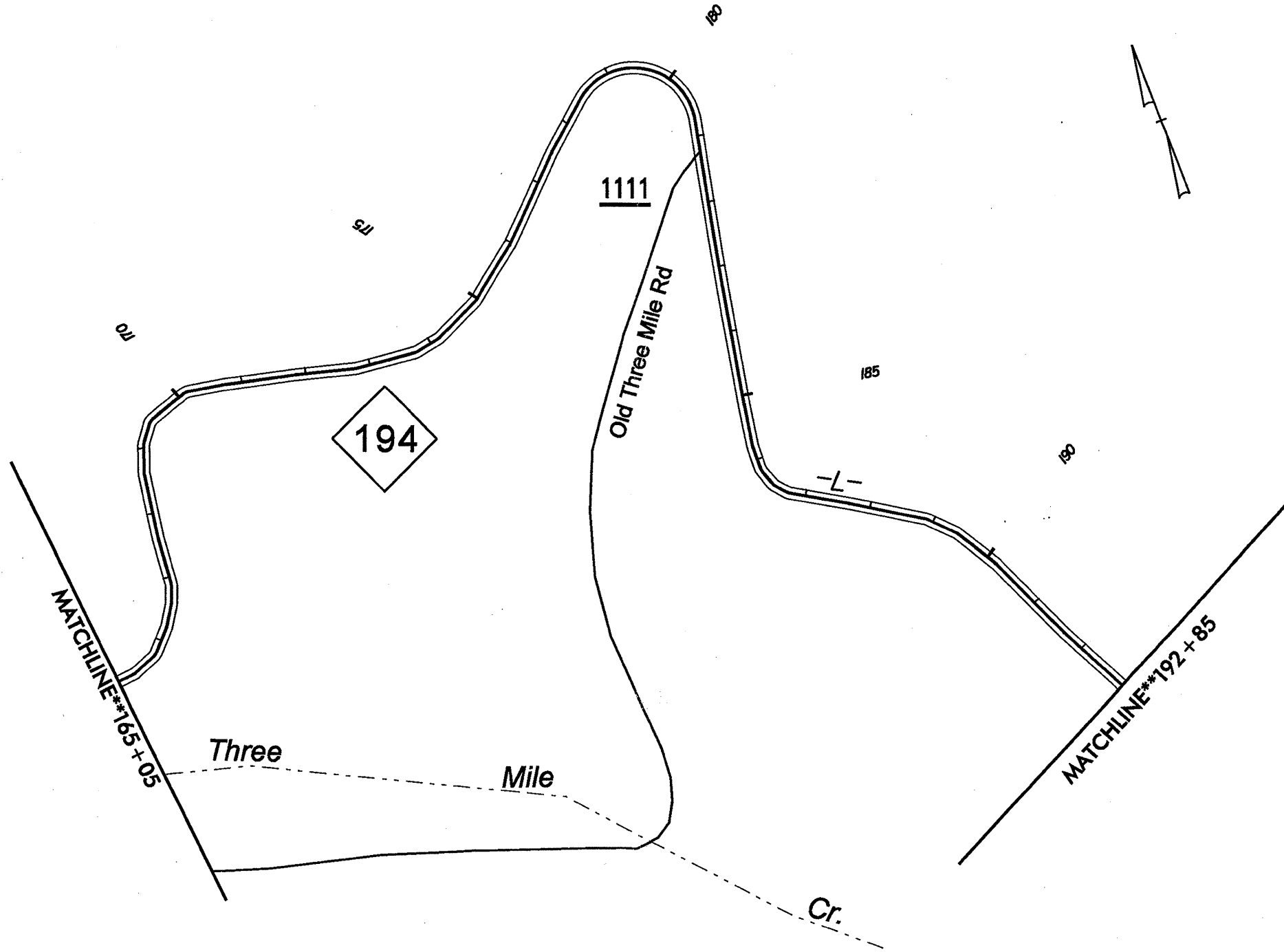


26-MAY-2009 16:23
 of any documents
 manager\economic stimulus projects\NC194Avery\DWG\5158-dde-psh15_041409.dgn

8/17/99

26-MAY-2009 16:28
c:\my documents\projects\project manager\economic stimulus projects\NC194Aver\DDNV-5158-ddc-esh16_041409.dgn
Drawn AT 01/04/09

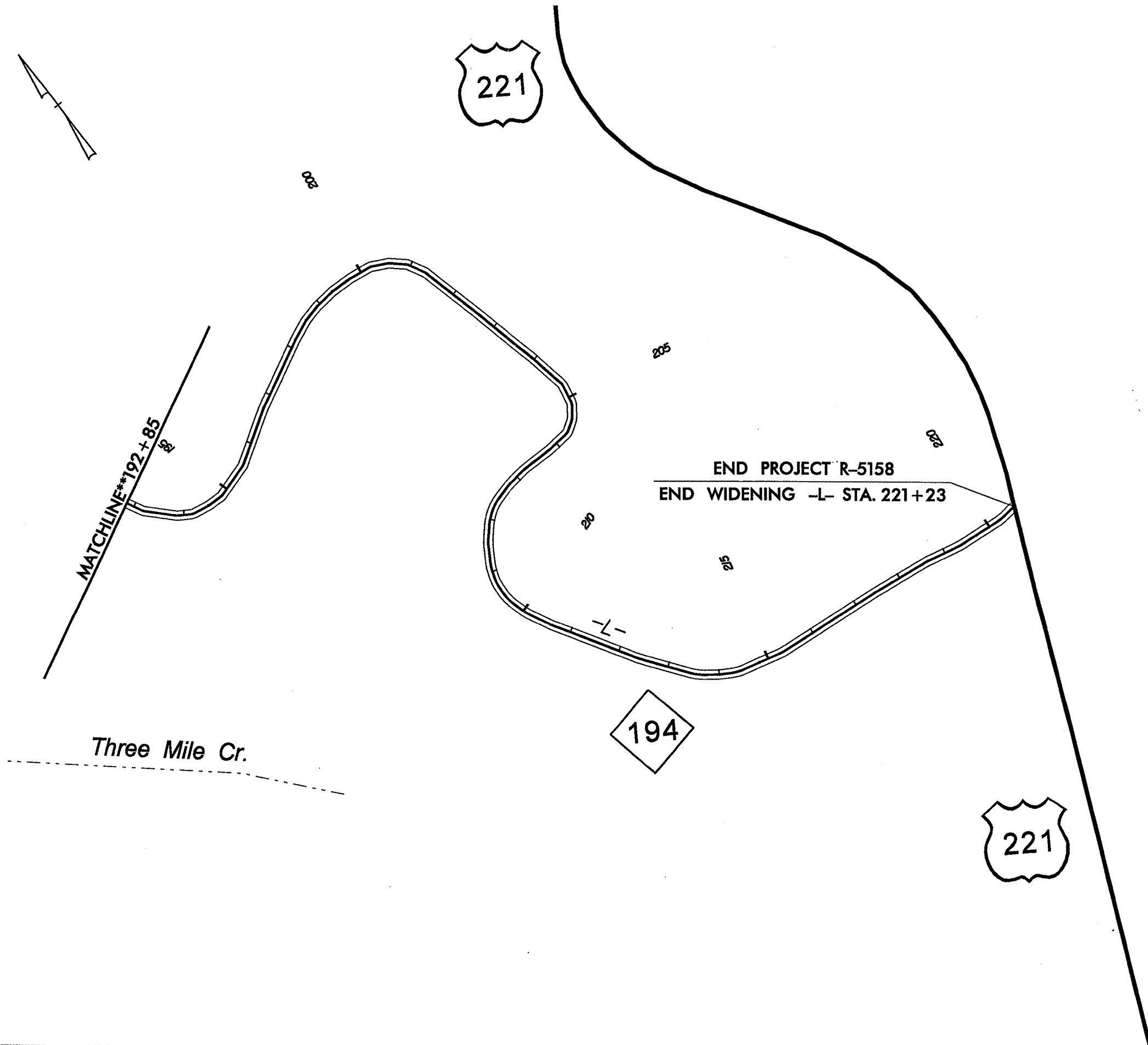
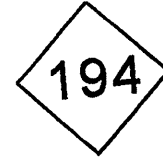
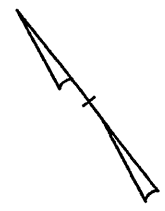
PROJECT REFERENCE NO.		SHEET NO.	
R-5158		16	
RW SHEET NO.			
ROADWAY DESIGN ENGINEER		HYDRAULICS ENGINEER	



8/17/99

26-MAY-2009 16:41
C:\my documents\project manager\economic stimulus projects\NC1944\ver1\DSN\--5158_ddd.psh17_841409.dgn

PROJECT REFERENCE NO.		SHEET NO.	
R-5158		17	
RW SHEET NO.			
ROADWAY DESIGN ENGINEER		HYDRAULICS ENGINEER	

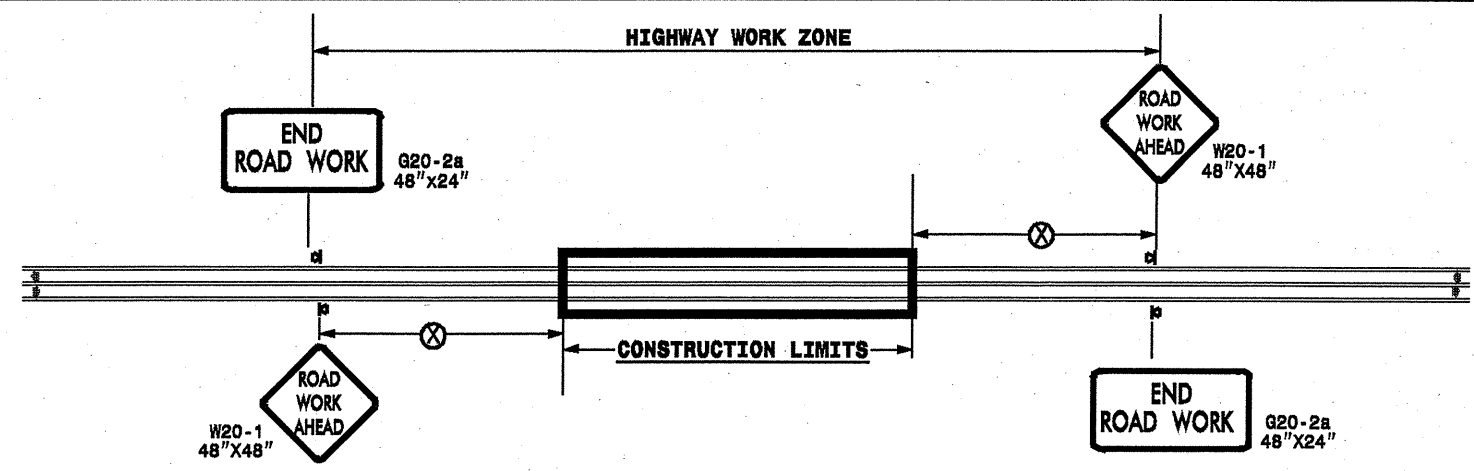


END PROJECT R-5158
 END WIDENING -L- STA. 221+23

MATCHLINE**192+85

Three Mile Cr.

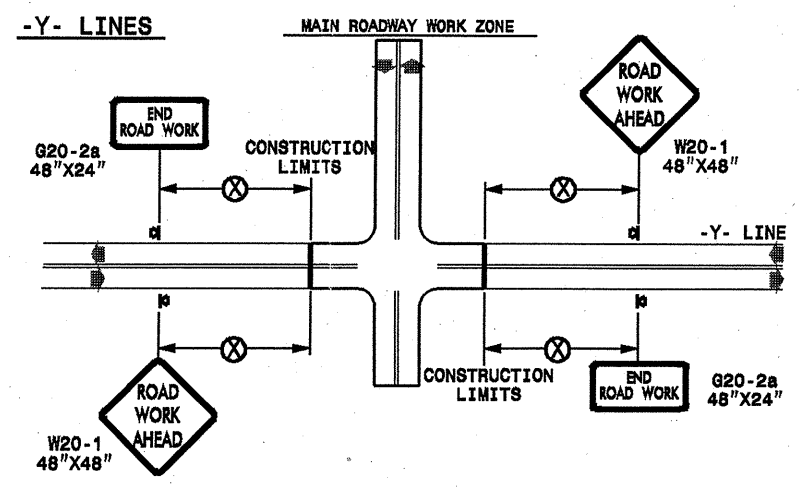
TWO-WAY UNDIVIDED ** (L-LINES)



POSTED SPEED LIMIT (M.P.H.)	RECOMMENDED MINIMUM SIGN SPACING
≤ 50	500'
≥ 55	1000'

STATE OF NORTH CAROLINA
DEPT. OF TRANSPORTATION
DIVISION OF HIGHWAYS
RALEIGH, N.C.

ROADWAYS INTERSECTING ALONG 2 WAY UNDIVIDED WORK ZONE (Y-LINES)



GENERAL NOTES

- USE FLUORESCENT ORANGE SHEETING (TYPE VII OR HIGHER) ON ALL ADVANCE WORK ZONE SIGNS.
- DO NOT INSTALL ADVANCE WARNING SIGNS MORE THAN 3 DAYS PRIOR TO BEGINNING OF WORK.
- ALL SIGN SPACING DIMENSIONS ARE APPROXIMATE, FIELD ADJUST AS NECESSARY OR AS DIRECTED.
- USE PORTABLE WORK ZONE SIGNS ONLY WITH PORTABLE WORK ZONE SIGN STANDS SPECIFICALLY DESIGNED FOR ONE ANOTHER. PORTABLE WORK ZONE SIGNS MAY BE ROLL UP OR APPROVED COMPOSITE.
- PROVIDE PORTABLE WORK ZONE SIGN STANDS, PORTABLE SIGNS AND SIGN SHEETING WHICH ARE LISTED ON THE NORTH CAROLINA DEPARTMENT OF TRANSPORTATION'S APPROVED PRODUCT LIST OR ACCEPTED AS TRAFFIC QUALIFIED BY THE TRAFFIC CONTROL UNIT.
- ** TWO-WAY UNDIVIDED ADVANCE WARNING SIGN CONFIGURATION MAY BE USED ON URBAN MULTI-LANE FACILITIES WHERE CONDITIONS LIMIT THE USE OF DUAL MOUNTED SIGNS AS DETERMINED BY THE ENGINEER.

LEGEND

◀ PORTABLE SIGN

➡ DIRECTION OF TRAFFIC FLOW

DETAIL DRAWING
FOR TWO-WAY UNDIVIDED
WORK ZONE WARNING SIGNS

SHEET 1 OF 1

APPROVED: _____ DATE: _____	<p>DETAIL DRAWING FOR TWO-WAY UNDIVIDED ADVANCED WORK ZONE WARNING SIGNS</p>	<p>SCALE: NONE</p>		REVISIONS
SEAL				7-98 10/01
				10-98 03/04
				01/01 11/04

01-JUN-2009 17:05 s:\signing\resurfacing\030509\resurfacing2009\div1\c202373_451053st1_r-5158_2wayundivurbfr-wys\july2006_portable.dgn pseymore AT WZTC237502