

09/28/09

T.I.P. NO.	SHEET NO.
B-4409	UO-1

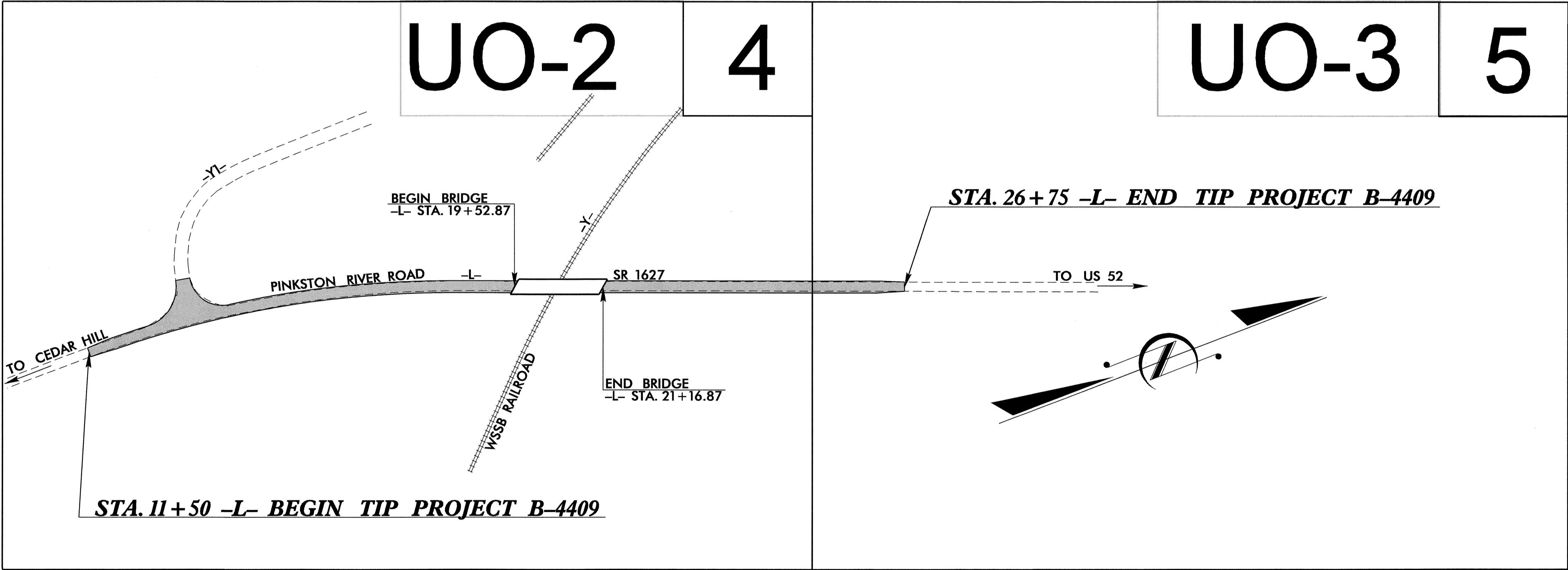
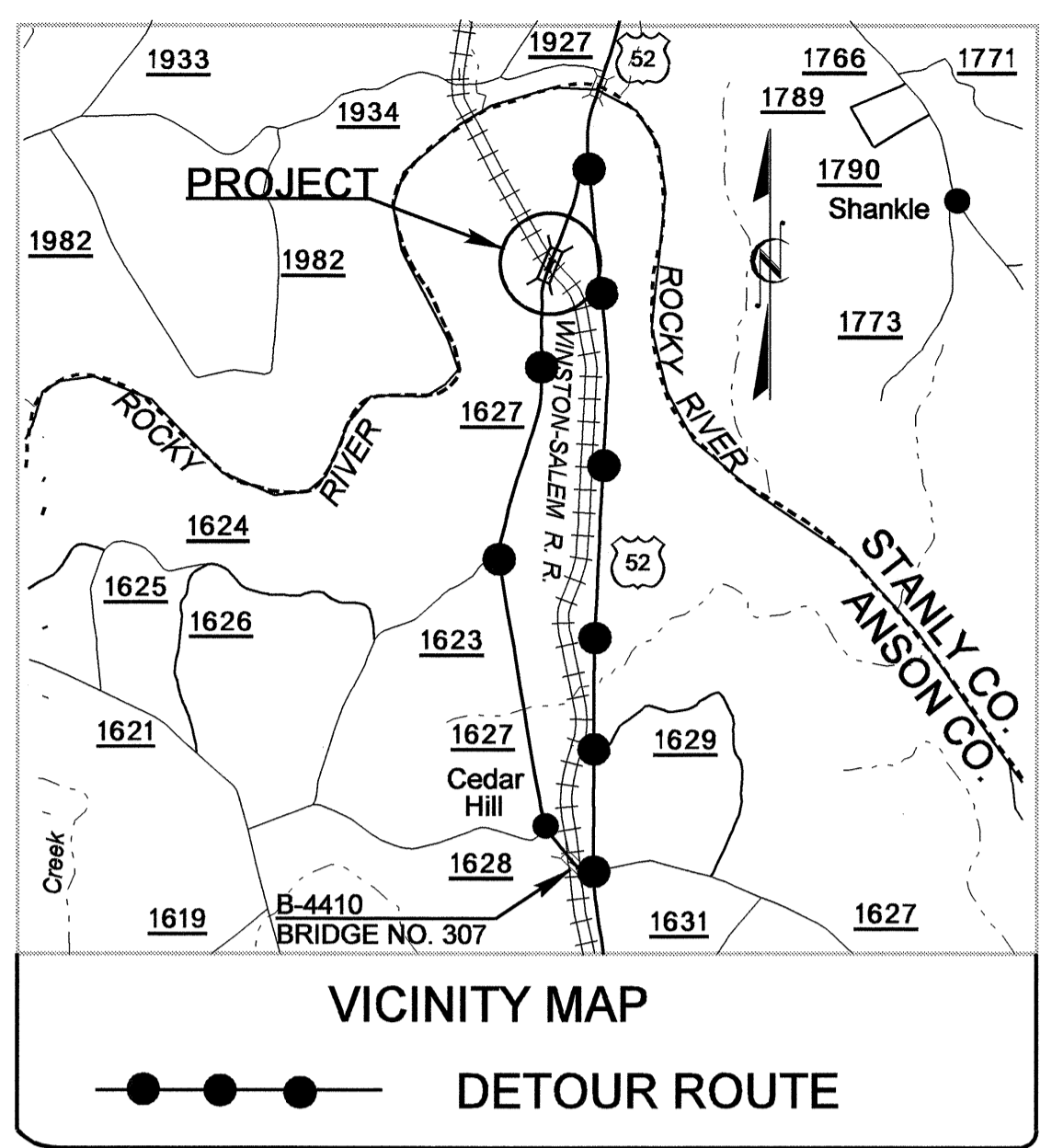
STATE OF NORTH CAROLINA  
DIVISION OF HIGHWAYS

**UTILITIES BY OTHERS PLANS  
ANSON COUNTY**

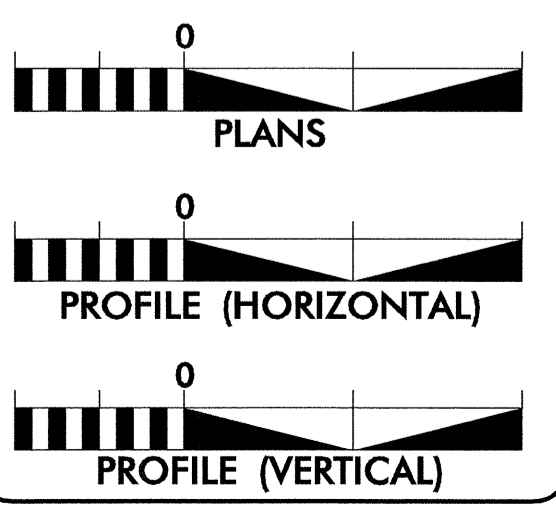
**LOCATION: BRIDGE NO. 308 OVER THE WINSTON-SALEM SOUTH  
BOUND RAILROAD ON SR 1627 (PINKSTON RIVER RD)**

**TYPE OF WORK: GRADING, PAVING, DRAINAGE, AND STRUCTURE**

**TIP PROJECT: B-4409**



**GRAPHIC SCALES**

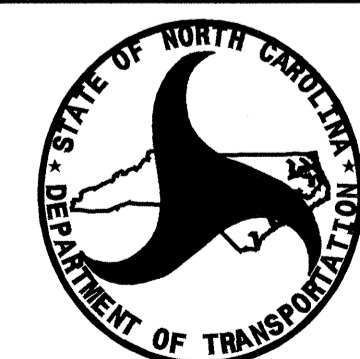


**INDEX OF SHEETS**

SHEET NO.	DESCRIPTION
UO-1	TITLE SHEET
UO-2 & 3	UTILITY BY OTHERS PLAN SHEETS

**UTILITY OWNERS ON PROJECT**

- (1) POWER: PEE DEE EMC CO.
- (2) TELEPHONE: WINDSTREAM CO.



PREPARED IN THE OFFICE OF:  
**DIVISION OF HIGHWAYS  
UTILITIES ENGINEERING  
SECTION**

1591 MAIL SERVICES CENTER  
RALEIGH NC 27699-1591  
PHONE (919) 250-4128  
FAX (919) 250-4119

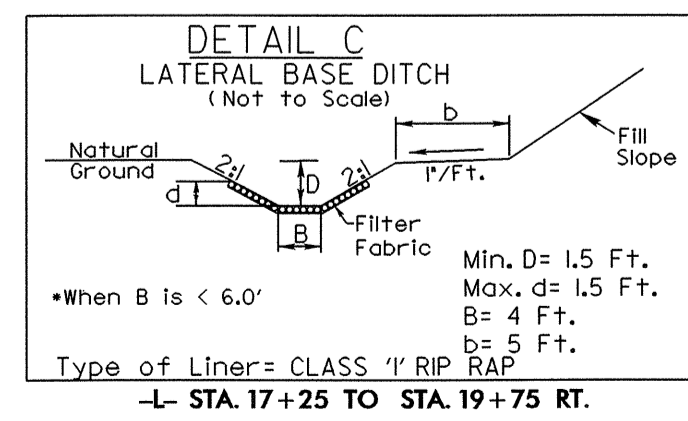
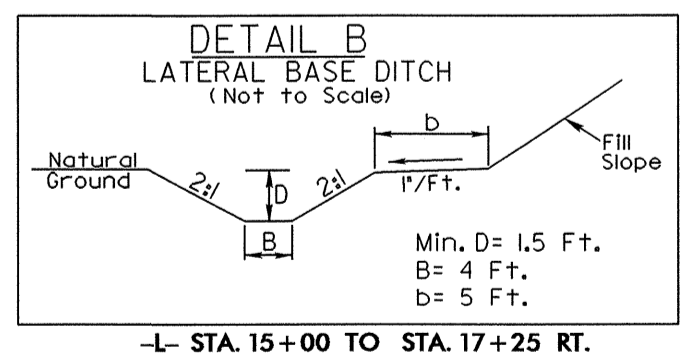
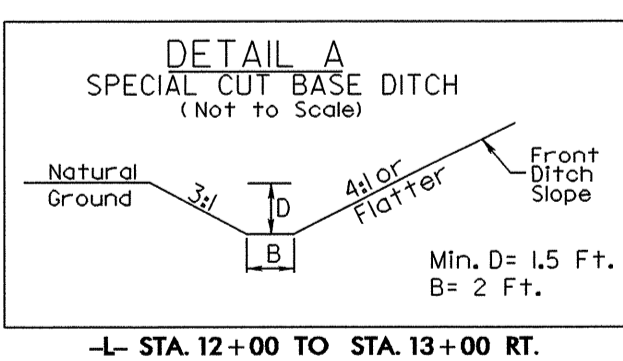
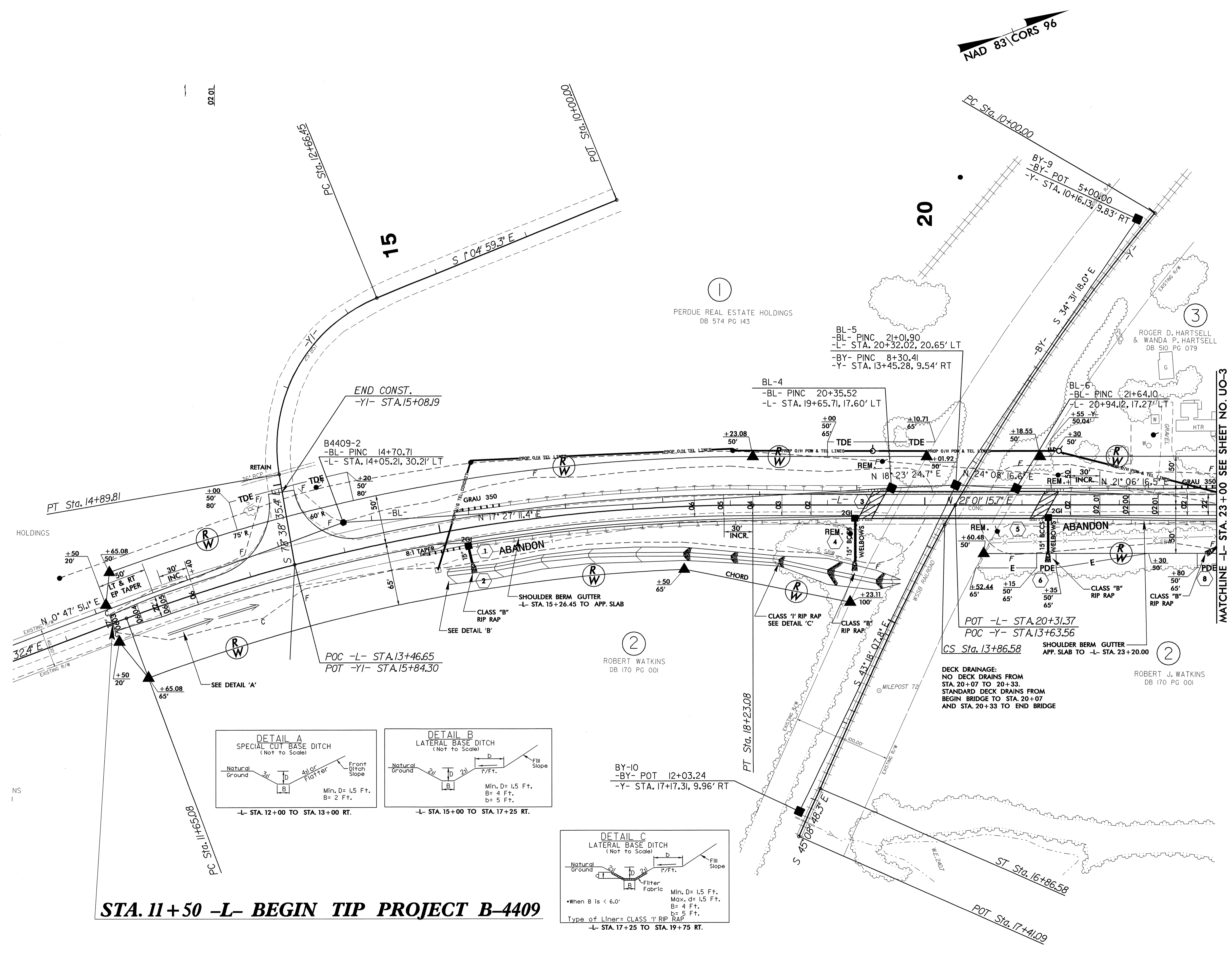
**Roger Worthington, P.E.** UTILITIES SECTION ENGINEER  
**Steve McKee, P.E.** UTILITIES SQUAD LEADER PROJECT ENGINEER  
**Jamshid Hafshejani** UTILITIES PROJECT DESIGNER

02-APR-2009 13:59  
C:\UTL\B-4409\UO-1\Proj\B-4409\_UO1\_rdy\_tsh.dgn  
\$\$\$\$\$USERNAME\$\$\$\$\$

### UTILITIES BY OTHERS

NOTE:  
ALL PROPOSED UTILITY WORK  
SHOWN ON THIS SHEET WILL  
BE DONE BY OTHERS

5/14/99  
02.01  
02-APR-2008 13:58  
I:\Users\11111\Documents\Projects\B-4409\1\_UO2.dwg -du-psh-s4.dgn



**DECK DRAINAGE:**  
NO DECK DRAINS FROM  
STA. 20+07 TO 20+33.  
STANDARD DECK DRAINS FROM  
BEGIN BRIDGE TO STA. 20+07  
AND STA. 20+33 TO END BRIDGE

**STA. 11+50 -L- BEGIN TIP PROJECT B-4409**

MATCHLINE -L- STA. 23+00 SEE SHEET NO. UO-3

