

TIP PROJECT: B-4307

STATE OF NORTH CAROLINA
DIVISION OF HIGHWAYS
PLAN FOR PROPOSED
HIGHWAY EROSION CONTROL
WARREN COUNTY

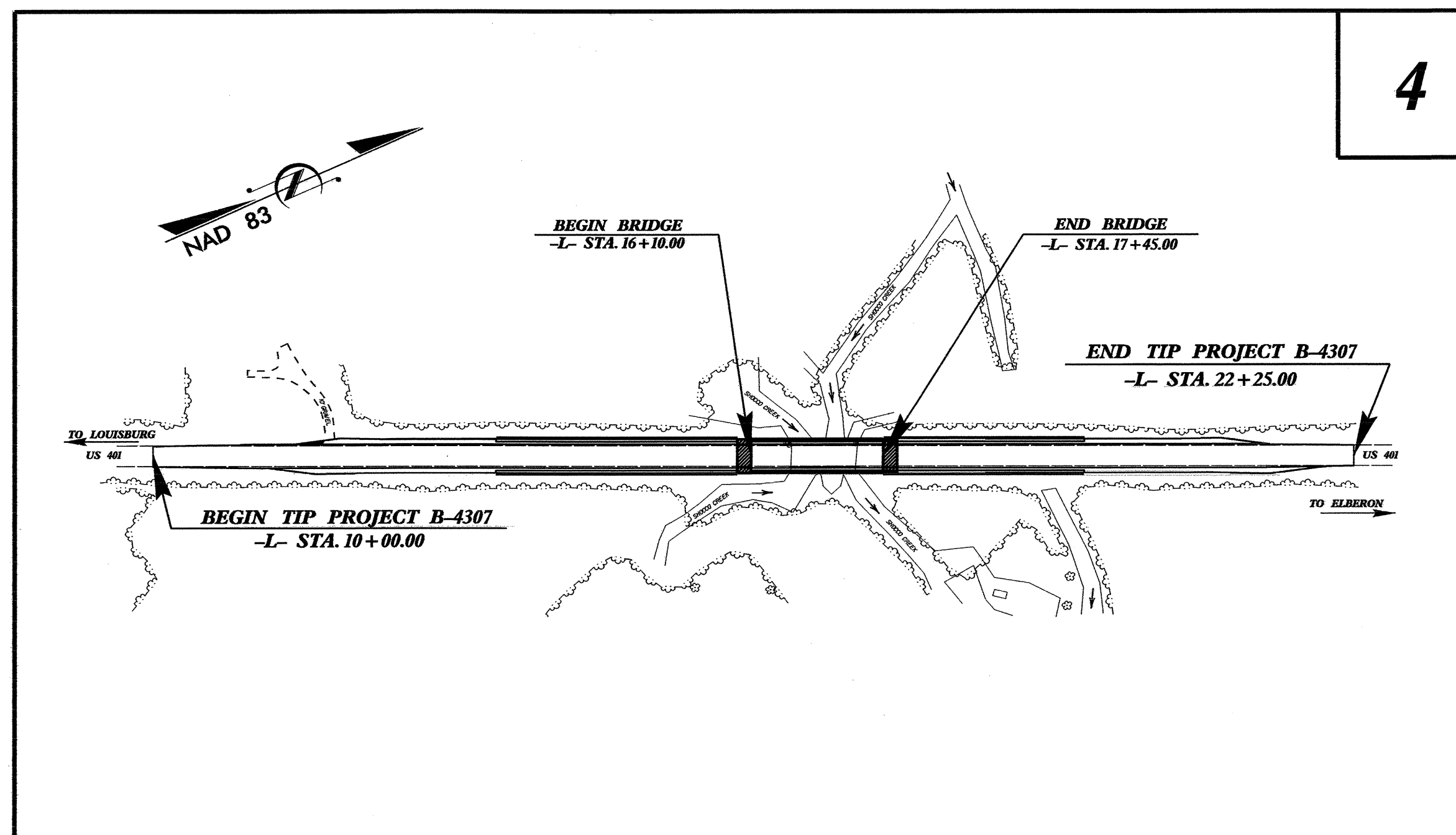
LOCATION: BRIDGE NO. 4 OVER SHOCCO CREEK AND
AND APPROACHES ON US 401

TYPE OF WORK: GRADING, PAVING, DRAINAGE, AND STRUCTURE

STATE	STATE PROJECT REFERENCE NO.	SHEET NO.	TOTAL SHEETS
N.C.	B-4307	EC-1	
STATE PROJ. NO.	F.A. PROJ. NO.	DESCRIPTION	

EROSION AND SEDIMENT CONTROL MEASURES

Std. #	Description	Symbol
1630.03	Temporary Silt Ditch.....	TD
1630.05	Temporary Diversion.....	TD
1605.01	Temporary Silt Fence.....	III III III
1606.01	Special Sediment Control Fence.....	III III III
1622.01	Temporary Berms and Slope Drains.....	TBD
1630.01	Riser Basin.....	(Symbol)
	Silt Basin Type B.....	(Symbol)
1653.01	Temporary Rock Silt Check Type-A.....	(Symbol)
	Temporary Rock Silt Check Type-B.....	(Symbol)
	Wattle.....	(Symbol)
1654.01	Temporary Rock Sediment Dam Type-A.....	(Symbol)
1654.02	Temporary Rock Sediment Dam Type-B.....	(Symbol)
1655.01	Rock Pipe Inlet Sediment Trap Type-A.....	(Symbol)
1655.02	Rock Pipe Inlet Sediment Trap Type-B.....	(Symbol)
1630.04	Stilling Basin.....	(Symbol)
1630.06	Special Stilling Basin.....	(Symbol)
	Rock Inlet Sediment Trap:	
1632.01	Type A.....	A
1632.02	Type B.....	B
1632.03	Type C.....	C
	Skimmer Basin.....	(Symbol)
	Tiered Skimmer Basin.....	(Symbol)
	Infiltration Basin.....	(Symbol)



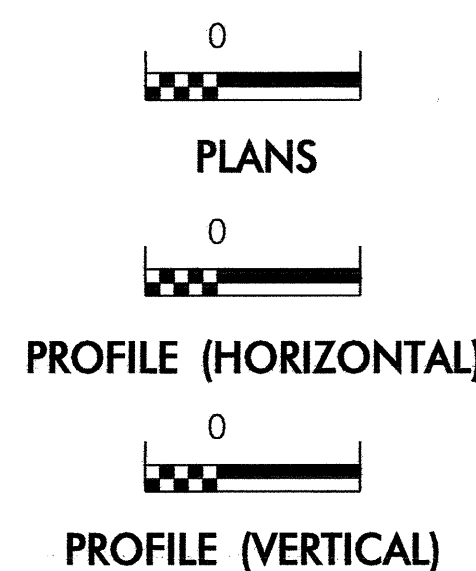
**THIS PROJECT CONTAINS
EROSION CONTROL PLANS
FOR CLEARING AND
GRUBBING PHASE OF
CONSTRUCTION.**

**THIS PROJECT HAS
BEEN DESIGNED TO
SENSITIVE WATERSHED
STANDARDS.**

**ENVIRONMENTALLY
SENSITIVE AREA(S) EXIST
ON THIS PROJECT**

*Refer To E. C. Special Provisions
for Special Considerations.*

GRAPHIC SCALE



ROADSIDE ENVIRONMENTAL UNIT
DIVISION OF HIGHWAYS
STATE OF NORTH CAROLINA

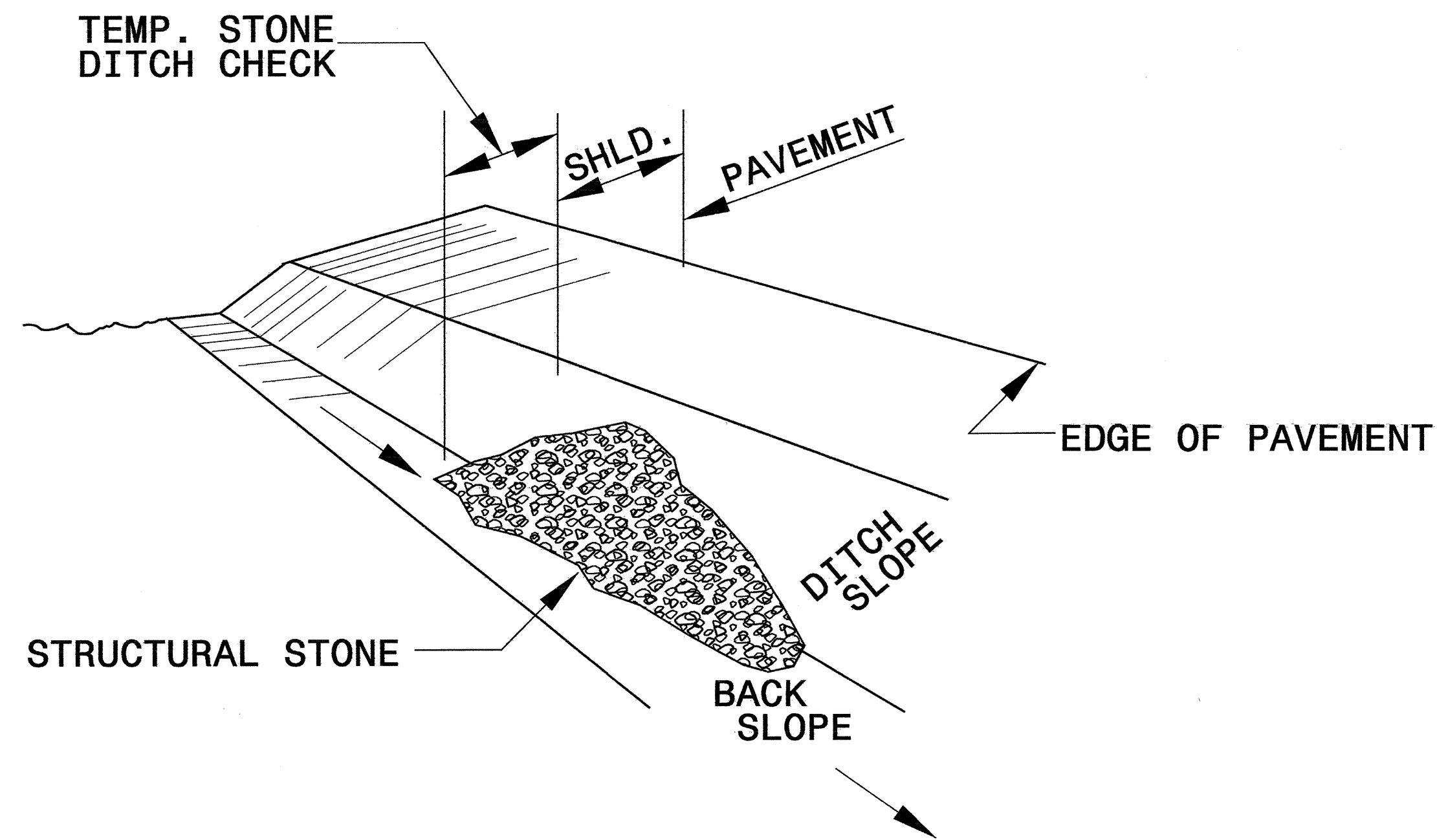
Prepared in the Office of:
ROADSIDE ENVIRONMENTAL UNIT
1 South Wilmington St.
Raleigh, NC 27611
2006 STANDARD SPECIFICATIONS

Roadway Standard Drawings
The following roadway english standards as appear in "Roadway Standard Drawings"- Roadway Design Unit - N. C. Department of Transportation - Raleigh, N. C., dated July 18, 2006 and the latest revision thereto are applicable to this project and by reference hereby are considered a part of these plans.

1605.01 Temporary Silt Fence	1632.03 Rock Inlet Sediment Trap Type C
1606.01 Special Sediment Control Fence	1633.01 Temporary Rock Silt Check Type A
1607.01 Gravel Construction Entrance	
1622.01 Temporary Berms and Slope Drains	
1630.05 Temporary Diversion	

PROJECT REFERENCE NO. <i>B-4307</i>	SHEET NO. <i>EC-2</i>
RW SHEET NO.	
ROADWAY DESIGN ENGINEER	HYDRAULICS ENGINEER

TEMPORARY ROCK SILT CHECK TYPE 'B' DETAIL

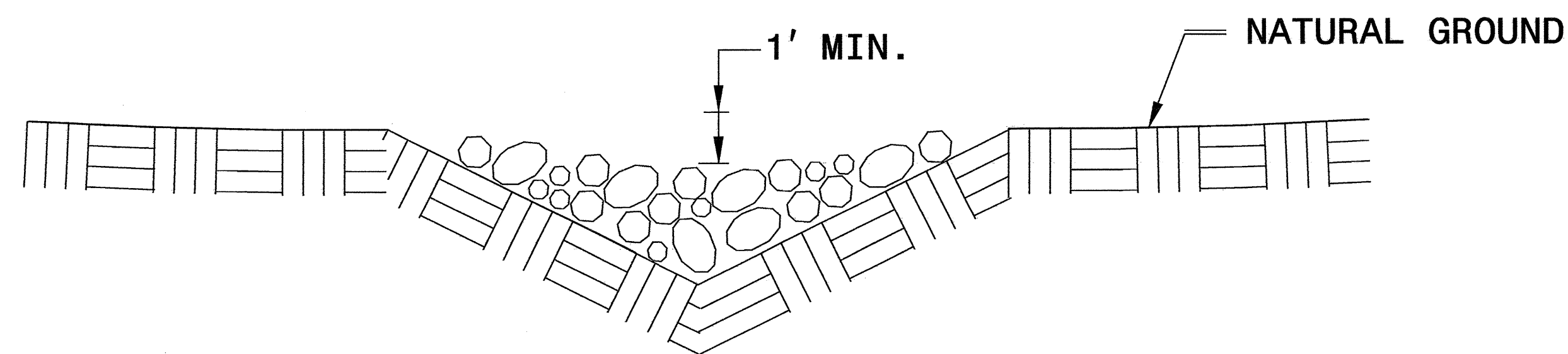


ISOMETRIC VIEW

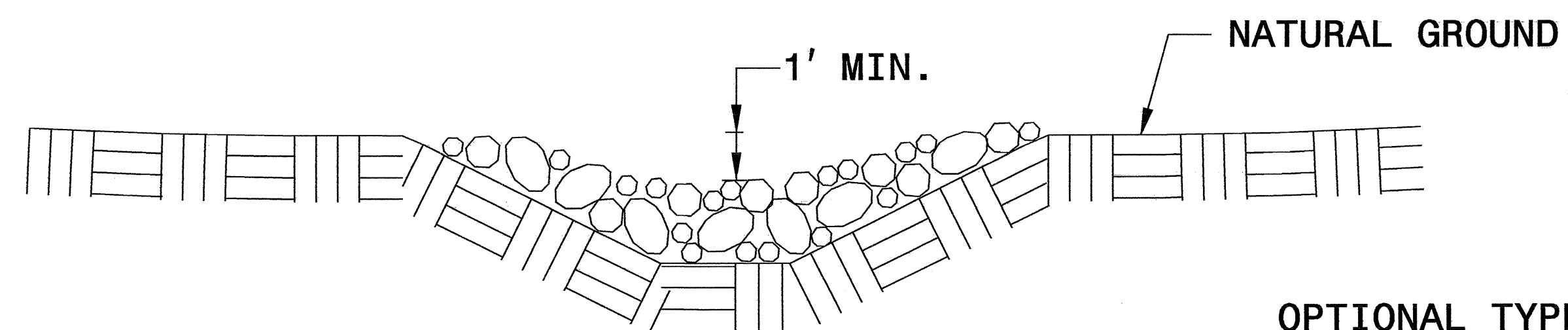
NOTES:

USE CLASS 'B' EROSION CONTROL STONE FOR STRUCTURAL STONE.

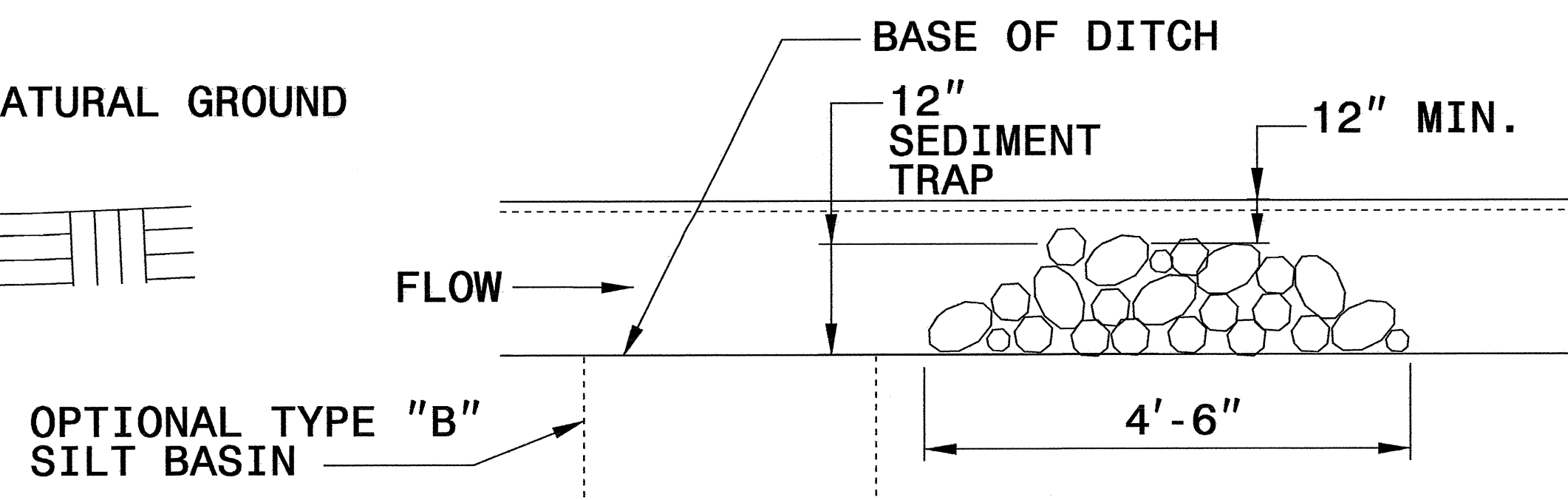
THE ENGINEER MAY DIRECT THE OPTION OF CLASS "A" STONE FOR SITES HAVING LESS THAN ONE (1) ACRE DRAINAGE AREA AND A DITCH GRADE LESS THAN 3%.



CROSS SECTION VEE DITCH



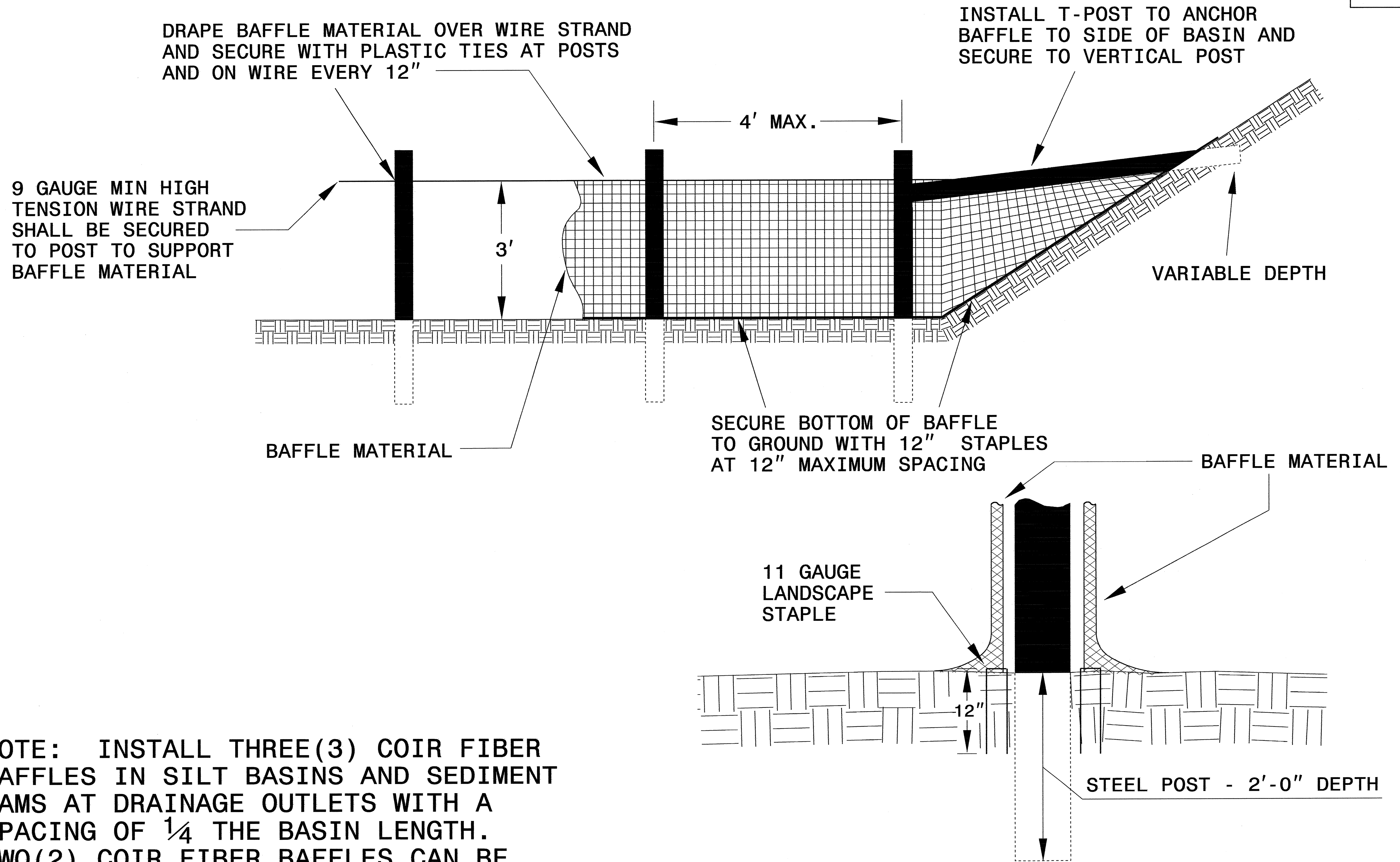
CROSS SECTION TRAPEZOIDAL DITCH



ELEVATION VIEW

PROJECT REFERENCE NO. B-4307	SHEET NO. EC-2A
RW SHEET NO.	
ROADWAY DESIGN ENGINEER	HYDRAULICS ENGINEER

COIR FIBER BAFFLE DETAIL

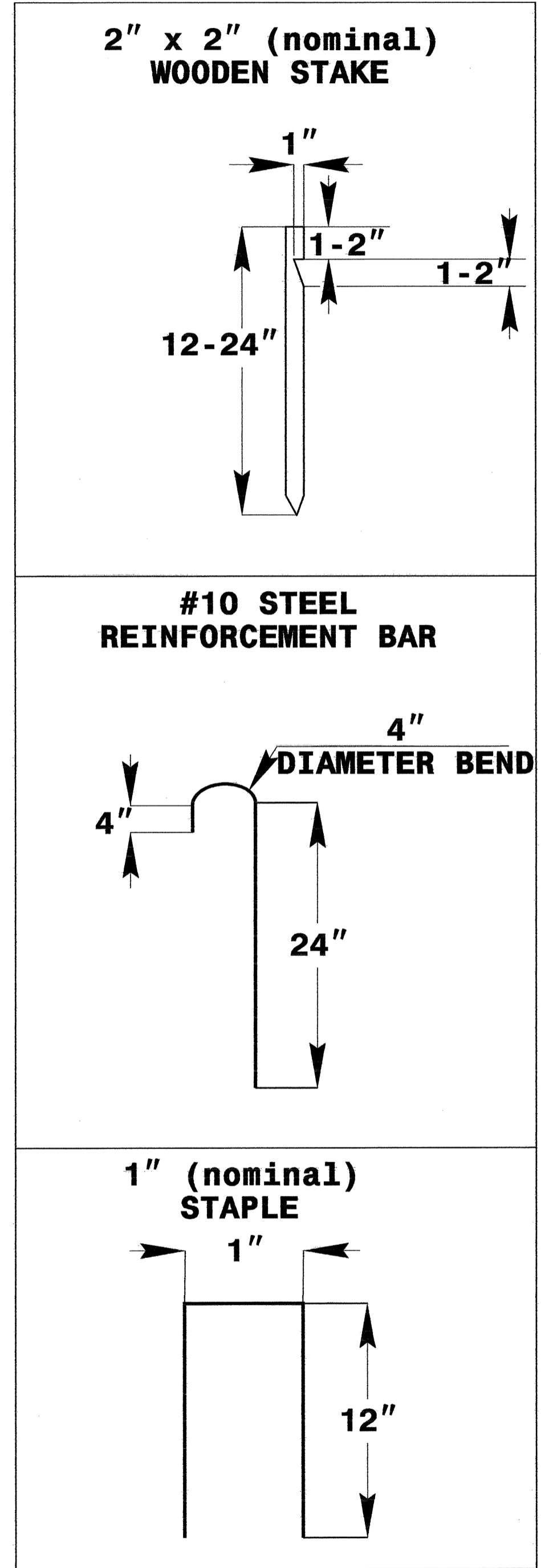
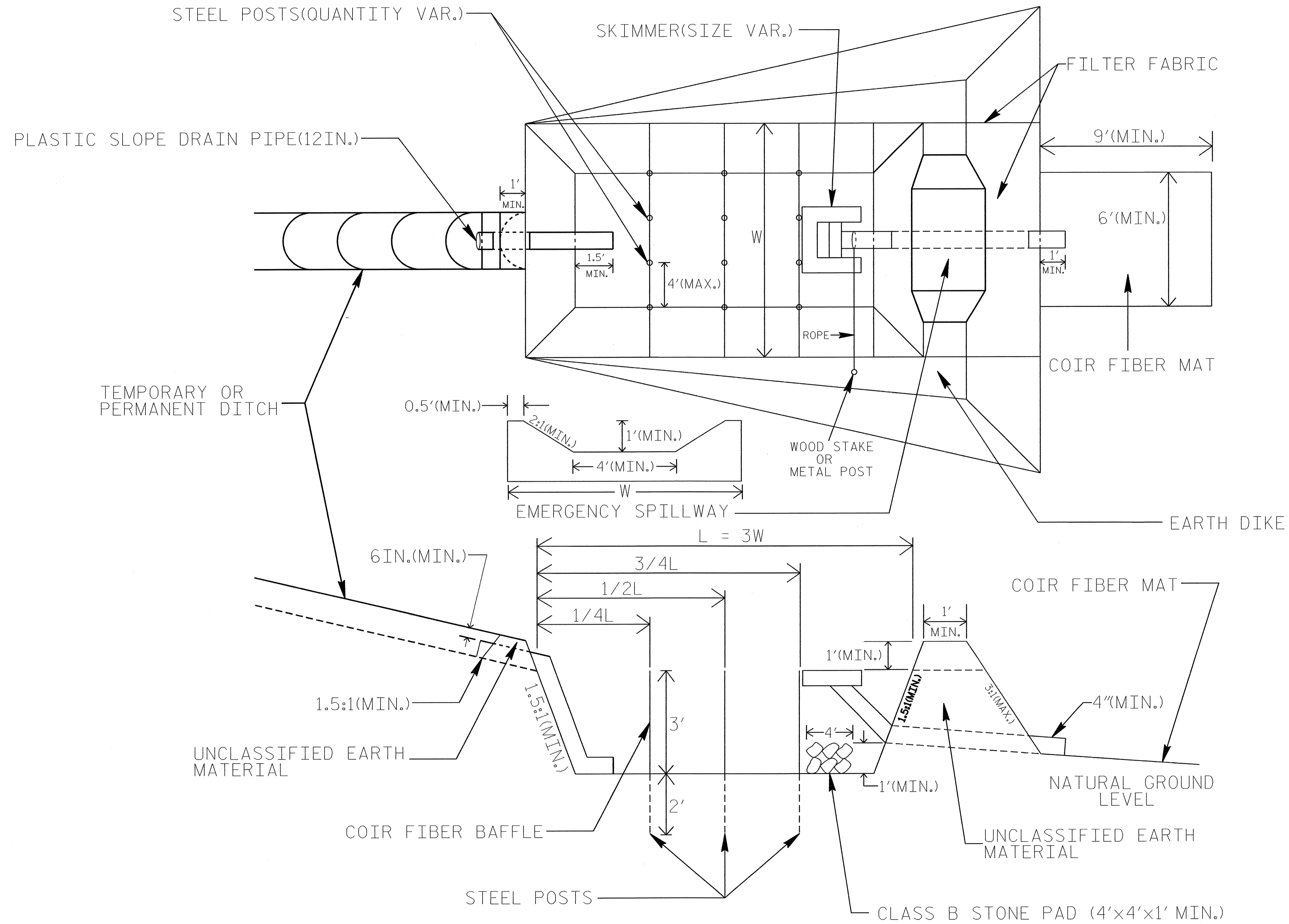


NOTE: INSTALL THREE(3) COIR FIBER BAFFLES IN SILT BASINS AND SEDIMENT DAMS AT DRAINAGE OUTLETS WITH A SPACING OF $\frac{1}{4}$ THE BASIN LENGTH. TWO(2) COIR FIBER BAFFLES CAN BE INSTALLED IN SILT BASINS AND DAMS LESS THAN 20 FT. IN LENGTH WITH A SPACING OF $\frac{1}{3}$ THE BASIN LENGTH.

BAFFLE MATERIAL SHALL BE SECURED TO THE BOTTOM AND SIDES OF BASIN USING 12" LANDSCAPE STAPLES

SKIMMER BASIN WITH BAFFLES DETAIL

PROJECT REFERENCE NO. B-4307	SHEET NO. EC-2B
RW SHEET NO.	
ROADWAY DESIGN ENGINEER	HYDRAULICS ENGINEER



COIR FIBER MAT ANCHOR OPTIONS

NOTES

1. SEED AND PLACE MATTING FOR EROSION CONTROL ON INTERIOR SIDESLOPES.
2. LIMIT EARTH DIKE HEIGHT TO 5 FT.
3. THE MINIMUM BASIN WIDTH SHALL BE 9 FT.
4. DETERMINE EMERGENCY SPILLWAY LENGTH (FT.) USING $Q/0.8$, WHERE Q IS FLOW RATE (CFS) INTO BASIN.

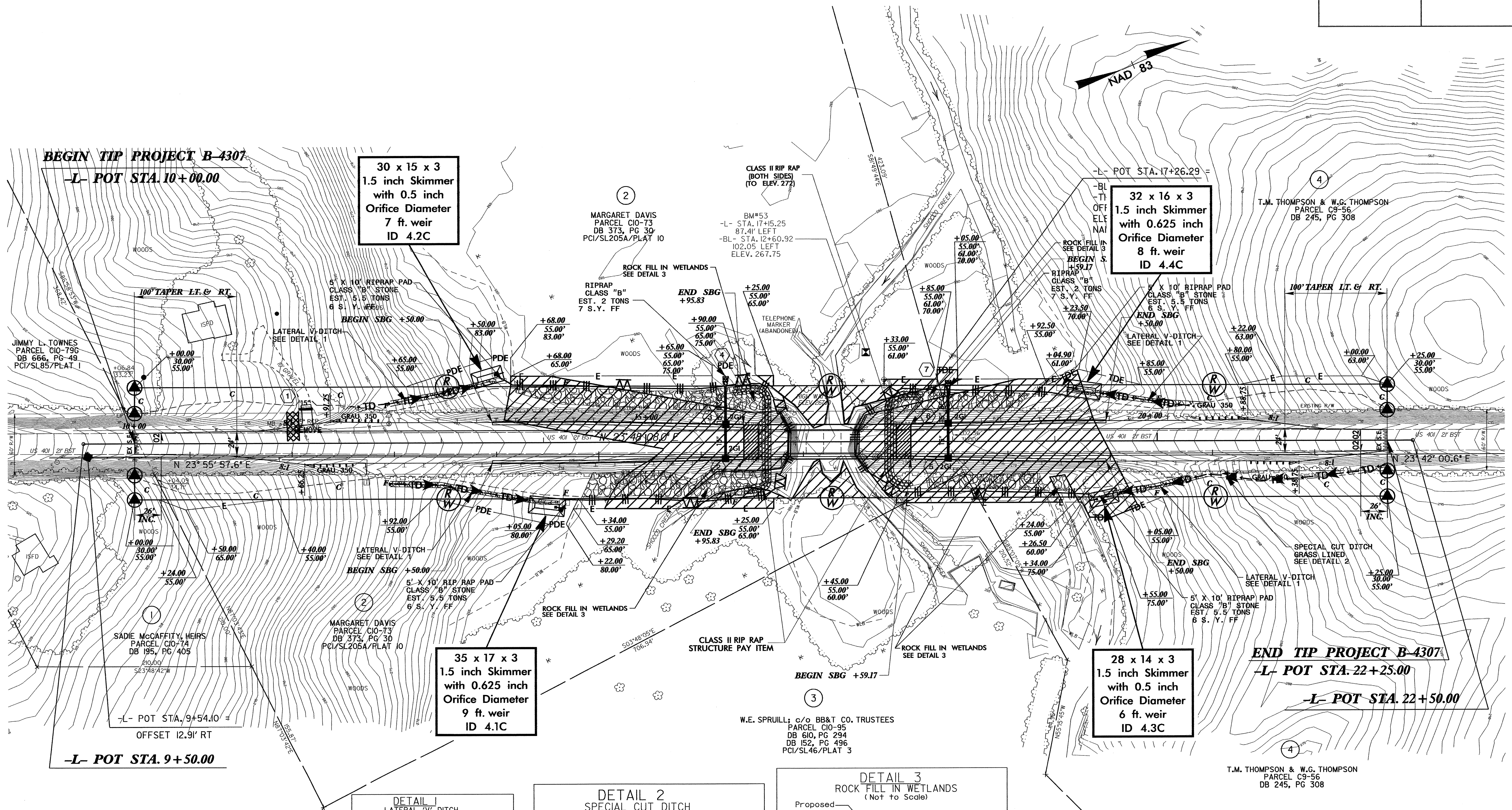
NOT TO SCALE

PROJECT REFERENCE NO.		SHEET NO.	
B-4307		EC-4/CONST-4	
RW SHEET NO.			
ROADWAY DESIGN ENGINEER		HYDRAULICS ENGINEER	

ENVIRONMENTALLY SENSITIVE AREA
SEE PROJECT SPECIAL PROVISIONS

CLEARING AND GRUBBING
EROSION CONTROL FOR
CONSTRUCTION SHEET 4

NOTE:
PLACE TEMPORARY ROCK SEDIMENT DAMS - B
AND TEMPORARY ROCK SILT CHECKS TYPE - A AT
DRAINAGE OUTLETS.



BEGIN TIP PROJECT B-4307
-L- POT STA. 10+00.00

30 x 15 x 3
1.5 inch Skimmer
with 0.5 inch
Orifice Diameter
7 ft. weir
ID 4.2C

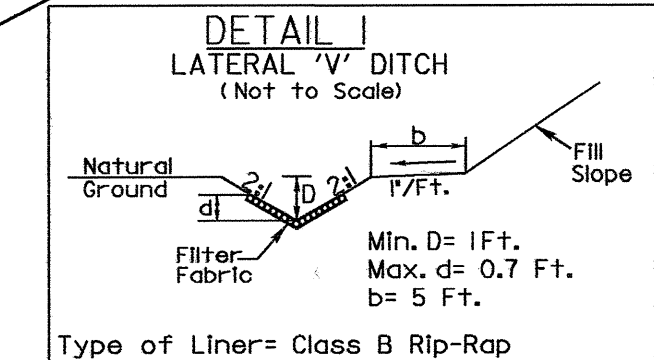
32 x 16 x 3
1.5 inch Skimmer
with 0.625 inch
Orifice Diameter
8 ft. weir
ID 4.4C

35 x 17 x 3
1.5 inch Skimmer
with 0.625 inch
Orifice Diameter
9 ft. weir
ID 4.1C

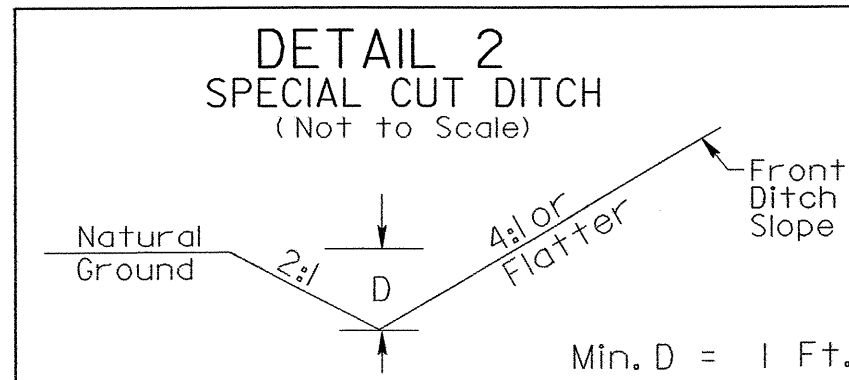
28 x 14 x 3
1.5 inch Skimmer
with 0.5 inch
Orifice Diameter
6 ft. weir
ID 4.3C

-L- POT STA. 9+50.00
OFFSET 12.91' RT

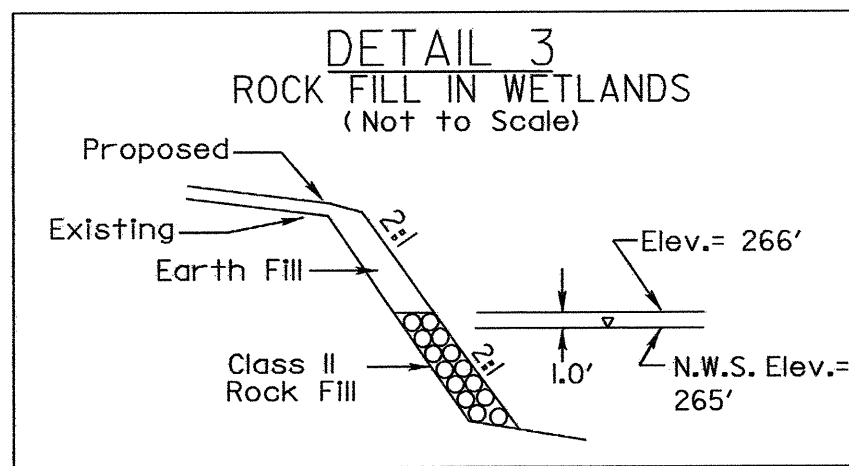
END TIP PROJECT B-4307
-L- POT STA. 22+25.00
-L- POT STA. 22+50.00



FROM -L- STA. 12+50 TO STA. 13+55 (LT.)
FROM -L- STA. 12+50 TO STA. 14+15 (RT.)
FROM -L- STA. 19+15 TO STA. 20+50 (LT.)
FROM -L- STA. 19+50 TO STA. 20+50 (RT.)



-L- STA. 20+50 TO 21+00 (RT.)



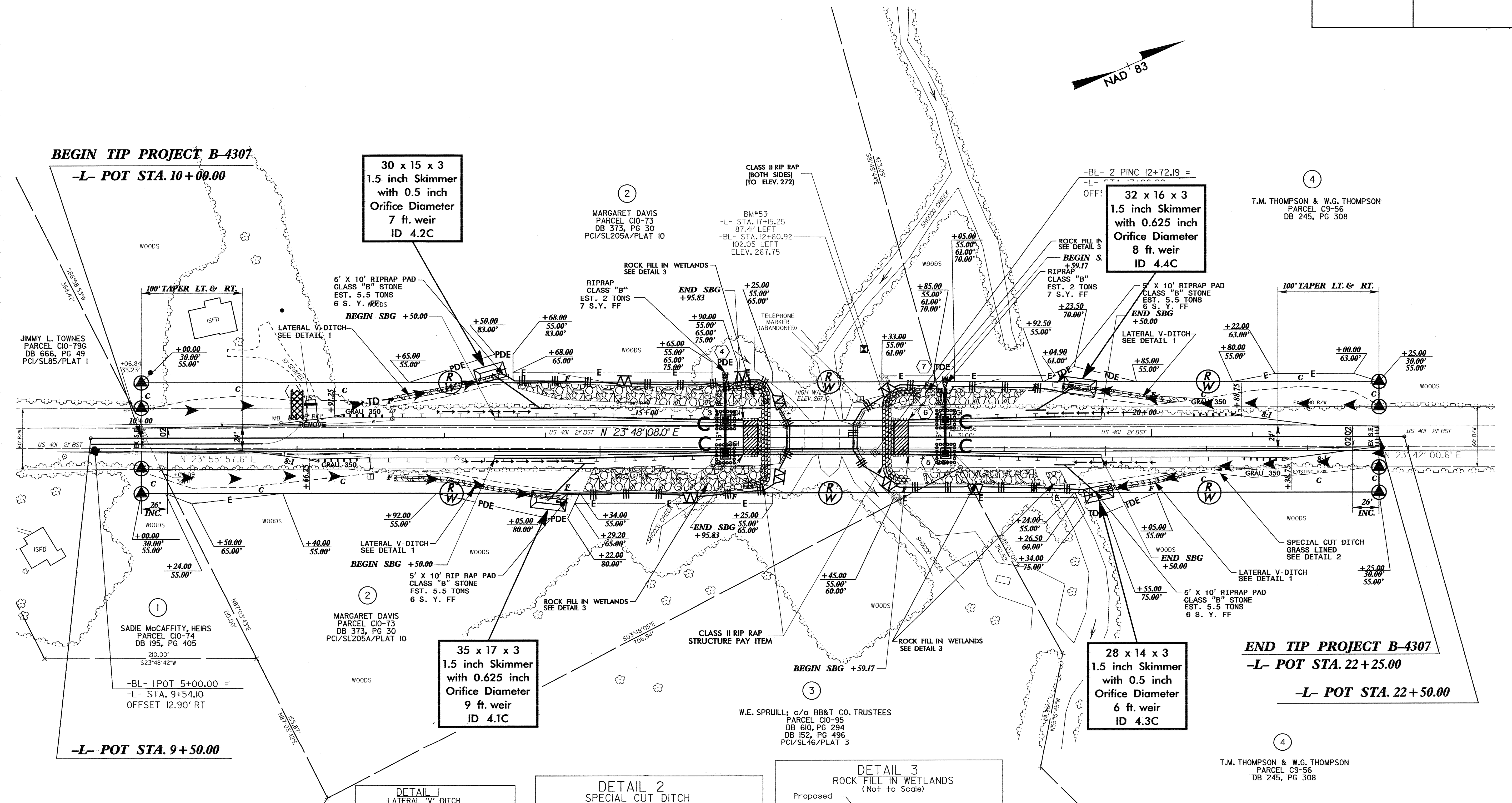
FROM -L- STA. 13+75 TO STA. 16+25 (LT.)
FROM -L- STA. 14+40 TO STA. 16+25 (RT.)
FROM -L- STA. 17+30 TO STA. 18+70 (LT.)
FROM -L- STA. 17+75 TO STA. 19+20 (RT.)

NOTE:
1). -L- PROFILE SEE SHEET 5
2). ALL DRIVEWAY RADII ARE 10' UNLESS NOTED OTHERWISE
3). FOR STRUCTURE PLANS SEE SHEETS S-1 THRU S-20

NATHAN FIELDS, HEIRS
PARCEL C10-79
DB 320, PG 71
DB 89, PG 407

Place Matting for Erosion Control on Erodeable Slopes Adjacent to Permitted Wetlands as Work Allows.

PROJECT REFERENCE NO. B-4307		SHEET NO. EC-5/CONST.4	
RW SHEET NO.			
ROADWAY DESIGN ENGINEER		HYDRAULICS ENGINEER	



BEGIN TIP PROJECT B-4307
-L- POT STA. 10+00.00

30 x 15 x 3
1.5 inch Skimmer
with 0.5 inch
Orifice Diameter
7 ft. weir
ID 4.2C

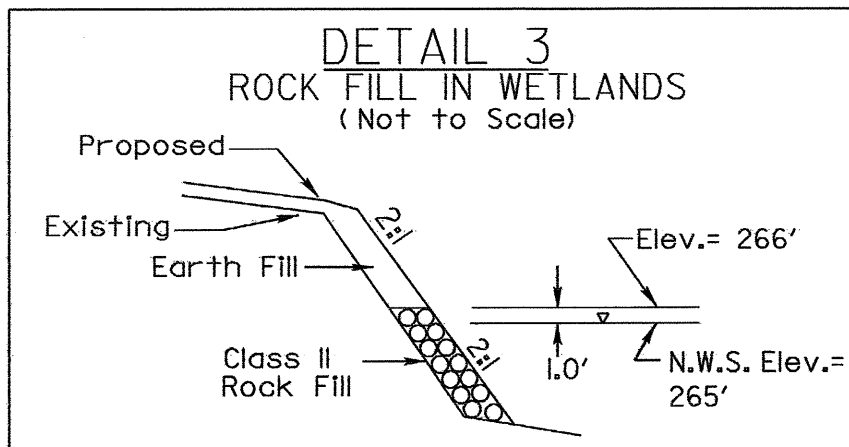
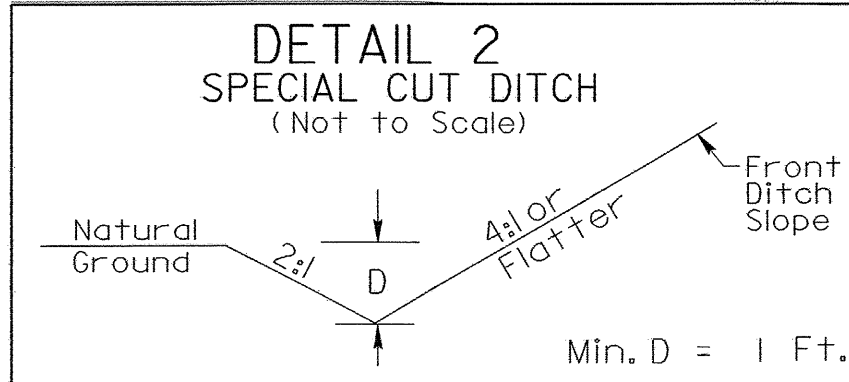
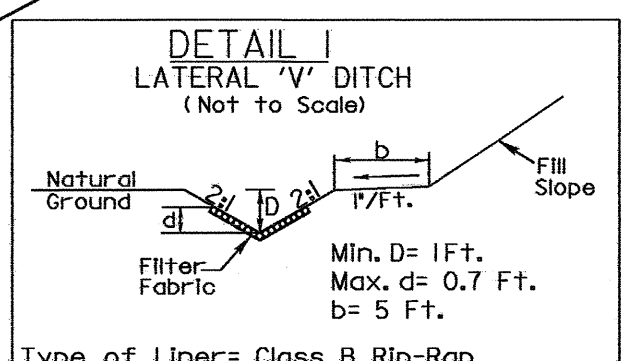
32 x 16 x 3
1.5 inch Skimmer
with 0.625 inch
Orifice Diameter
8 ft. weir
ID 4.4C

35 x 17 x 3
1.5 inch Skimmer
with 0.625 inch
Orifice Diameter
9 ft. weir
ID 4.1C

28 x 14 x 3
1.5 inch Skimmer
with 0.5 inch
Orifice Diameter
6 ft. weir
ID 4.3C

END TIP PROJECT B-4307
-L- POT STA. 22+25.00

-L- POT STA. 22+50.00



FROM -L- STA. 12+50 TO STA. 13+55 (LT.)
 FROM -L- STA. 12+50 TO STA. 14+15 (RT.)
 FROM -L- STA. 19+15 TO STA. 20+50 (LT.)
 FROM -L- STA. 19+50 TO STA. 20+50 (RT.)

-L- STA. 20+50 TO 21+00 (RT.)

FROM -L- STA. 13+75 TO STA. 16+25 (LT.)
 FROM -L- STA. 14+40 TO STA. 16+25 (RT.)
 FROM -L- STA. 17+30 TO STA. 18+70 (LT.)
 FROM -L- STA. 17+75 TO STA. 19+20 (RT.)

NOTE:
 1). -L- PROFILE SEE SHEET 5
 2). ALL DRIVEWAY RADII ARE 10' UNLESS NOTED OTHERWISE
 3). FOR STRUCTURE PLANS SEE SHEETS S-1 THRU S-20