

STATE OF NORTH CAROLINA  
DIVISION OF HIGHWAYS

STATE PROJECT REFERENCE NO.	SHEET NO.
B-3921	TCP-1

**PLAN FOR PROPOSED  
TRAFFIC CONTROL, MARKING & DELINEATION  
WARREN COUNTY**

B-3921

**ROADWAY STANDARD DRAWINGS**

THE FOLLOWING ROADWAY STANDARDS AS APPEAR IN "ROADWAY STANDARD DRAWINGS" - PROJECT SERVICES UNIT-N.C. DEPARTMENT OF TRANSPORTATION-RALEIGH, N.C., DATED JULY 2006 ARE APPLICABLE TO THIS PROJECT AND BY REFERENCE HEREBY ARE CONSIDERED A PART OF THESE PLANS:

STD. NO.	TITLE
1101.03	TEMPORARY ROAD CLOSURES
1101.05	WORK ZONE VEHICLE ACCESSES
1101.11	TRAFFIC CONTROL DESIGN TABLES
1110.01	STATIONARY WORK ZONE SIGNS
1110.02	PORTABLE WORK ZONE SIGNS
1135.01	CONES
1145.01	BARRICADES
1205.01	PAVEMENT MARKINGS - LINE TYPES & OFFSETS
1205.02	PAVEMENT MARKINGS - 2 LANE & MULTILANE ROADWAYS
1205.12	PAVEMENT MARKINGS - BRIDGES
1250.01	PAVEMENT MARKER SPACING
1251.01	RAISED PAVEMENT MARKERS (TEMPORARY & PERMANENT)
1261.01	GUARDRAIL & BARRIER DELINEATOR SPACING
1261.02	GUARDRAIL & BARRIER DELINEATOR TYPES
1262.01	GUARDRAIL END DELINEATION

**INDEX OF SHEETS**

SHEET NO.	TITLE
TCP-1	LIST OF APPLICABLE ROADWAY STANDARD DRAWINGS, LEGEND AND INDEX OF SHEETS, PROJECT NOTES
TCP-2	BALTIMORE ROAD DETOUR
SD-1	SIGN DESIGN

**PROJECT PHASING**

NOTE: MAKE SURE THAT TRAFFIC IS MAINTAINED FOR ALL DRIVEWAYS THROUGHOUT THE PROJECT FOR THE DURATION OF THE PROJECT.

- STEP 1) INSTALL OFF-SITE DETOUR SIGNING AS SHOWN ON TCP-2. USE ROADWAY STANDARD DRAWING 1101.03 TO CLOSE -L- AND PLACE TRAFFIC ON THE OFF-SITE DETOUR.
- STEP 2) BUILD -L- STA. 9+36.17 TO STA. 19+87.20, INCLUDING NEW STRUCTURE, UP TO BUT NOT INCLUDING THE FINAL LAYER OF SURFACE COURSE.
- STEP 3) PLACE THE FINAL LAYER OF SURFACE COURSE, FINAL PAVEMENT MARKINGS AND MARKERS ON -L- FROM STA. 9+36.17 TO STA. 19+87.20.
- STEP 4) REMOVE ALL TRAFFIC CONTROL DEVICES AND RE-OPEN -L- TO TRAFFIC

**GENERAL NOTES**

ADAPT THE TRAFFIC CONTROL PLANS, WHEN DIRECTED BY THE ENGINEER, TO MEET FIELD CONDITIONS TO PROVIDE SAFE AND EFFICIENT TRAFFIC MOVEMENT. CHANGES MAY BE REQUIRED WHEN PHYSICAL DIMENSIONS IN THE DETAIL DRAWINGS, STANDARD DETAILS AND ROADWAY DETAILS ARE NOT ATTAINABLE, OR RESULT IN DUPLICATE, OR UNDESIRED OVERLAPPING OF DEVICES. MODIFICATION MAY INCLUDE: MOVING, SUPPLEMENTING, COVERING OR REMOVAL OF DEVICES.

THE FOLLOWING GENERAL NOTES APPLY AT ALL TIMES FOR THE DURATION OF THE CONSTRUCTION PROJECT, EXCEPT WHEN OTHERWISE NOTED IN THE PLAN, OR DIRECTED BY THE ENGINEER.

**TRAFFIC PATTERN ALTERATIONS**

- A) NOTIFY THE ENGINEER TWENTY ONE (21) CALENDAR DAYS PRIOR TO ANY TRAFFIC PATTERN ALTERATION.

**SIGNING**

- B) CONTRACTOR WILL BE RESPONSIBLE FOR PERMANENT SIGNING.
- C) CONTRACTOR WILL BE RESPONSIBLE FOR DETOUR SIGNING OFF THE PROJECT LIMITS.
- D) THE CONTRACTOR WILL COVER OR REMOVE ALL DETOUR SIGNS WITHIN THE PROJECT LIMITS WHEN A DETOUR IS NOT IN OPERATION.
- E) ENSURE ALL NECESSARY SIGNING IS IN PLACE PRIOR TO ALTERING ANY TRAFFIC PATTERN.

**TRAFFIC CONTROL DEVICES**

- F) PLACE TYPE III BARRICADES, WITH "ROAD CLOSED" SIGN R11-2 ATTACHED, OF SUFFICIENT LENGTH TO CLOSE ENTIRE ROADWAY. STAGGER OR OVERLAP BARRICADES TO ALLOW FOR INGRESS OR EGRESS.

**PAVEMENT MARKINGS AND MARKERS**

- G) INSTALL PAVEMENT MARKINGS AND PAVEMENT MARKERS ON THE FINAL SURFACE AS FOLLOWS:
- | ROAD NAME                | MARKING               | MARKER                   |
|--------------------------|-----------------------|--------------------------|
| BALTIMORE ROAD (SR 1600) | THERMOPLASTIC         | PERMANENT RAISED MARKERS |
| BRIDGE DECK (SR 1600)    | TYPE III COLD APPLIED | PERMANENT RAISED MARKERS |
- H) TIE PROPOSED PAVEMENT MARKING LINES TO EXISTING PAVEMENT MARKING LINES.
- I) REPLACE ANY PAVEMENT MARKINGS THAT HAVE BEEN DAMAGED BY THE END OF EACH DAY'S OPERATION.

**LEGEND**

**GENERAL**

- DIRECTION OF TRAFFIC FLOW
- NORTH ARROW
- PROPOSED PVMT. EXIST. PVMT.
- WORK AREA
- REMOVAL OF EXISTING PAVEMENT

**TRAFFIC CONTROL DEVICES**

- TYPE I BARRICADE
- TYPE II BARRICADE
- TYPE III BARRICADE
- CONE
- DRUM SKINNY DRUM
- FLASHING ARROW PANEL (TYPE C)
- STATIONARY SIGN
- PORTABLE SIGN
- STATIONARY OR PORTABLE SIGN
- CRASH CUSHION
- CHANGEABLE MESSAGE SIGN
- TRUCK MOUNTED IMPACT ATTENUATOR (TMIA)
- POLICE
- FLAGGER

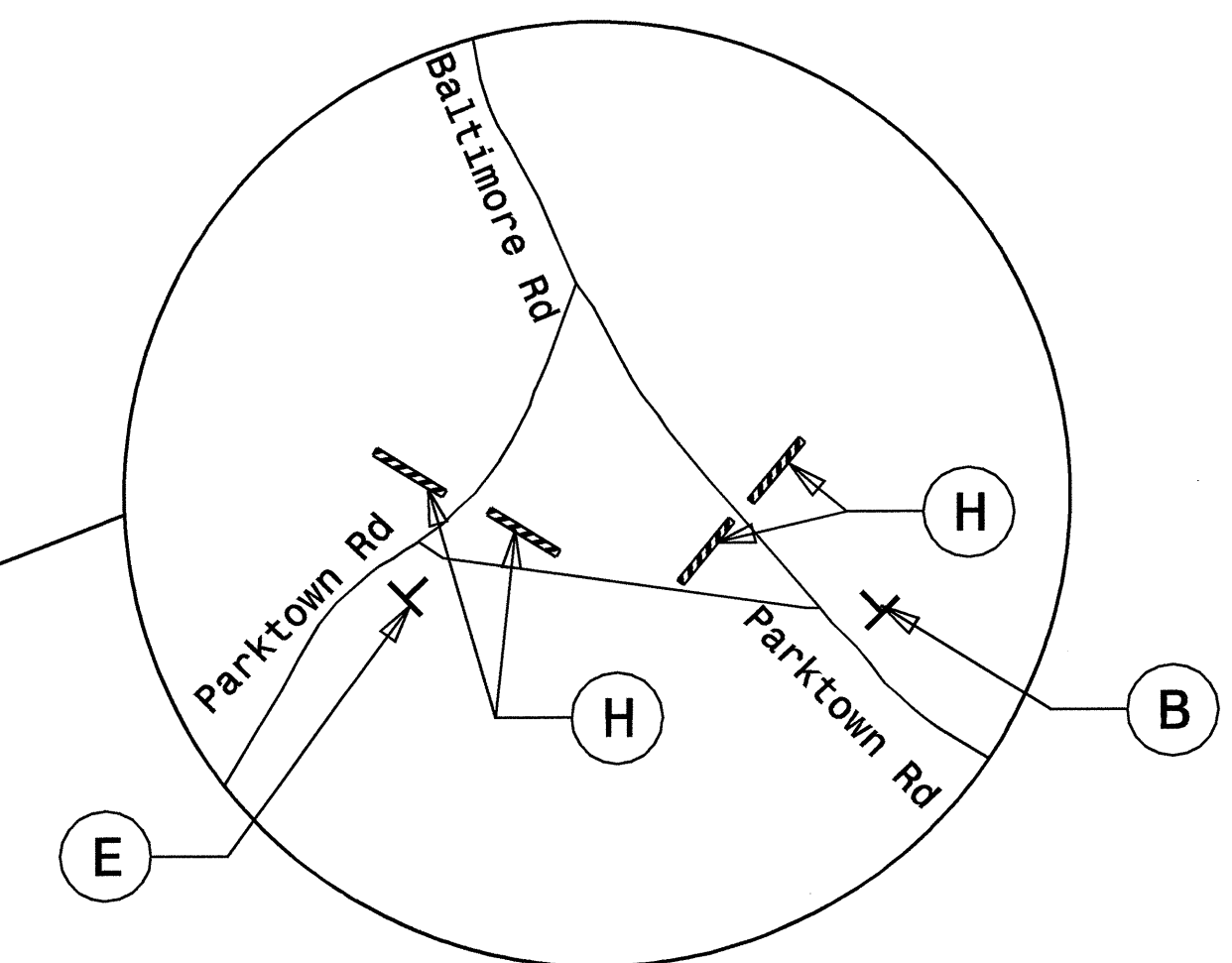
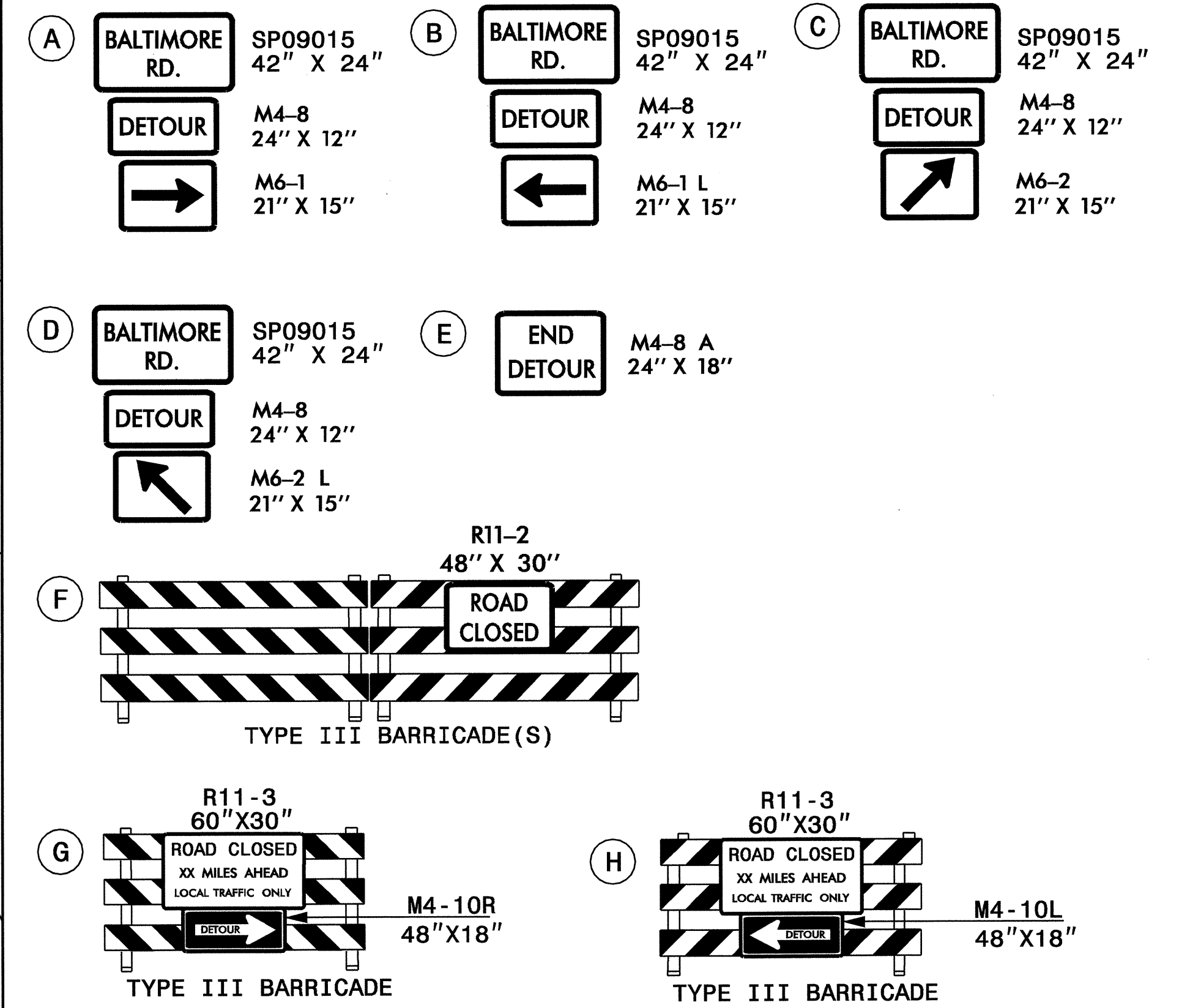
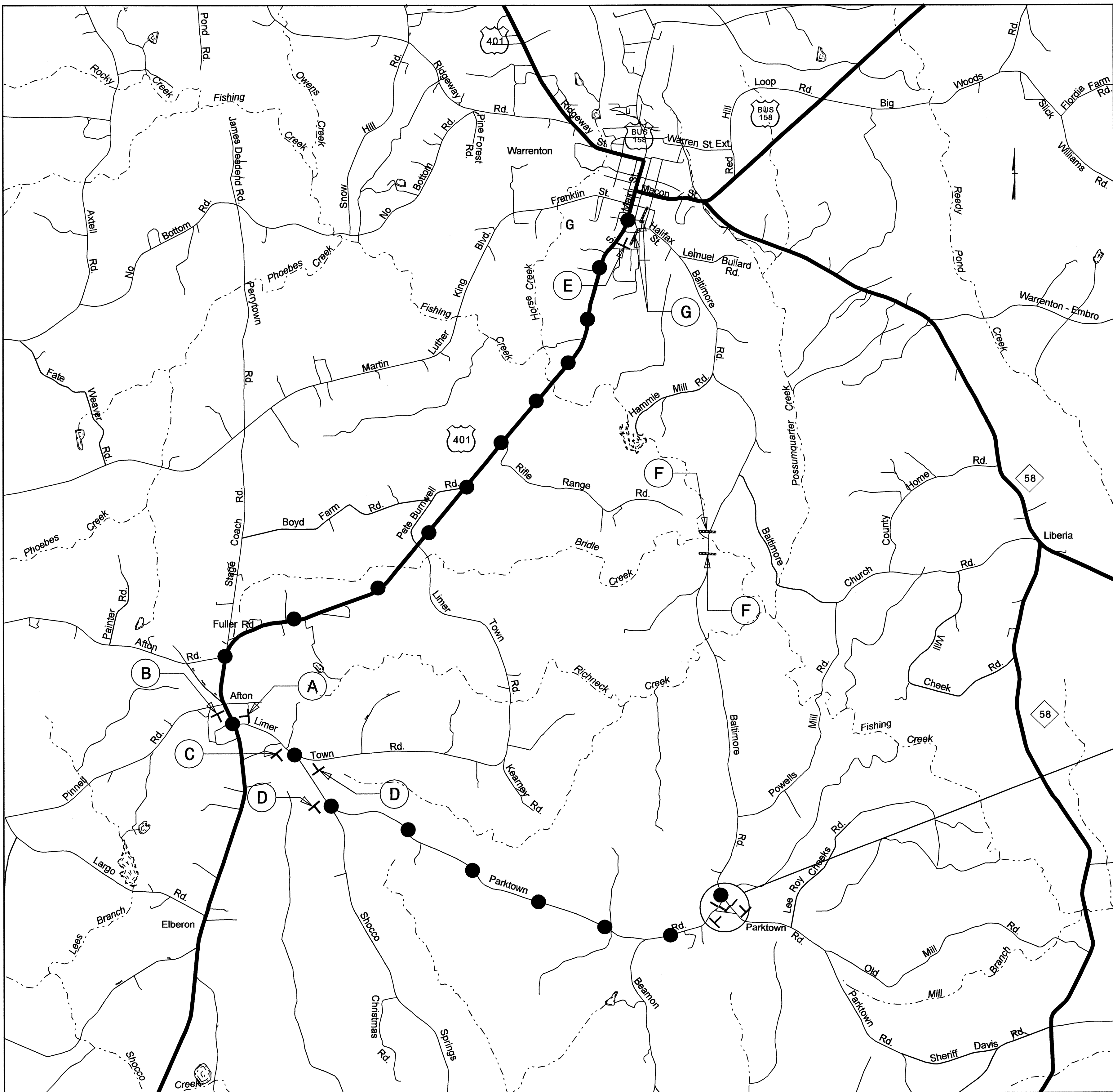
**PAVEMENT MARKINGS**

- CRYSTAL/CRYSTAL PAVEMENT MARKER
- YELLOW/YELLOW PAVEMENT MARKER
- CRYSTAL/RED PAVEMENT MARKER
- PAVEMENT MARKING SYMBOLS

APPROVED: DATE:	PLAN PREPARED BY: N.C.D.O.T. WORK ZONE TRAFFIC CONTROL UNIT
SEAL 	J. S. BOURNE, P.E. TRAFFIC CONTROL ENGINEER
	G. L. GETTIER, P.E. TRAFFIC CONTROL PROJECT ENGINEER
	J. W. WOOLARD, P.E. TRAFFIC CONTROL PROJECT DESIGN ENGINEER
	L. K. DONALDSON, P.E. TRAFFIC CONTROL DESIGN ENGINEER / TECHNICIAN

16-FEB-2009 15:36  
\\dot\dfsroot\p\proj\projects-b\3921\traffic\trafficcontrol\top\b3921.fc\_top\_title.dgn  
idonaldson AT WZTC237459

TIP PROJECT:



\*USE ROADWAY STANDARD DRAWING  
1101.03, SHEET 1 OF 9

APPROVED:	DATE: 2/17/09	<b>BALTIMORE RD DETOUR</b>					
SCALE: NONE	DWG. BY: LKD		<table border="1"> <thead> <tr> <th>REVISIONS</th> </tr> </thead> <tbody> <tr><td> </td></tr> <tr><td> </td></tr> <tr><td> </td></tr> </tbody> </table>	REVISIONS			
REVISIONS							
DESIGN BY: LKD	REVIEWED BY: JWW	CADD FILE					

I6-FEB-2009 15:37  
 \\dot\dfsroot01\proj\Tip\projects-b\3921\Traffic\TrafficControl\top\2551\_top\_detour2.dgn  
 idonalson AT WZTC237485