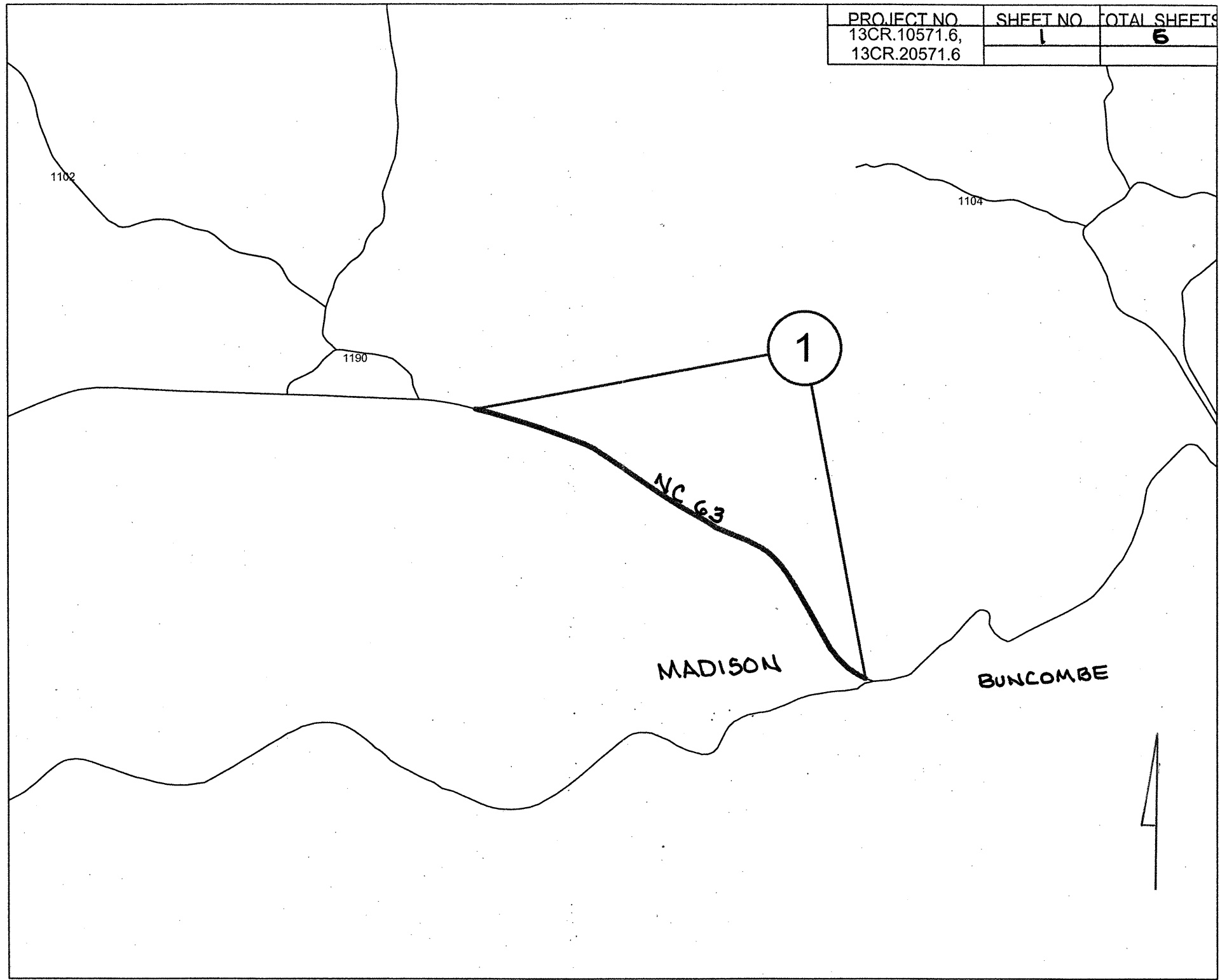
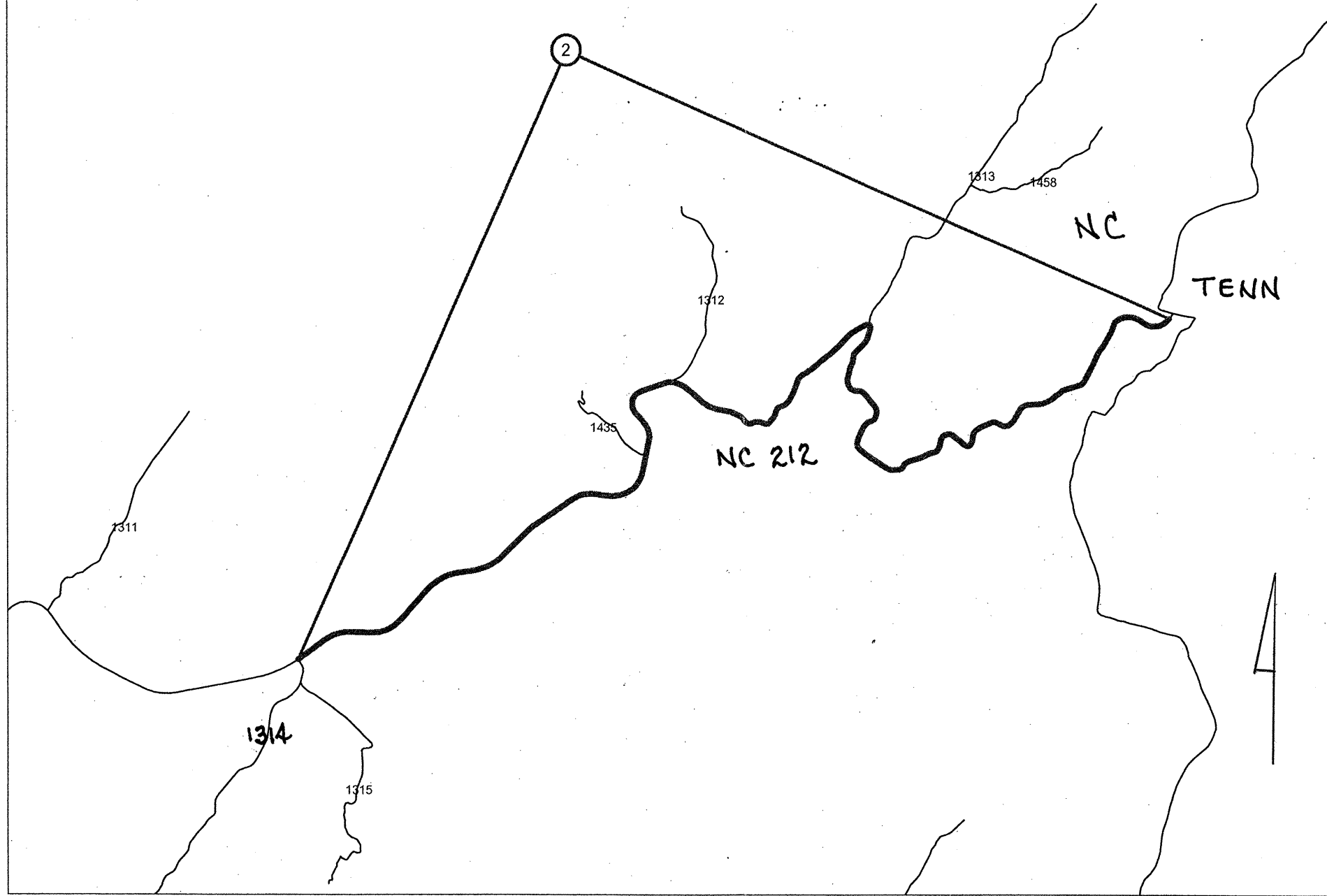


PROJECT NO. 13CR.10571.6, 13CR.20571.6	SHEET NO. 1	TOTAL SHEETS 6
----------------------------------------------	----------------	-------------------

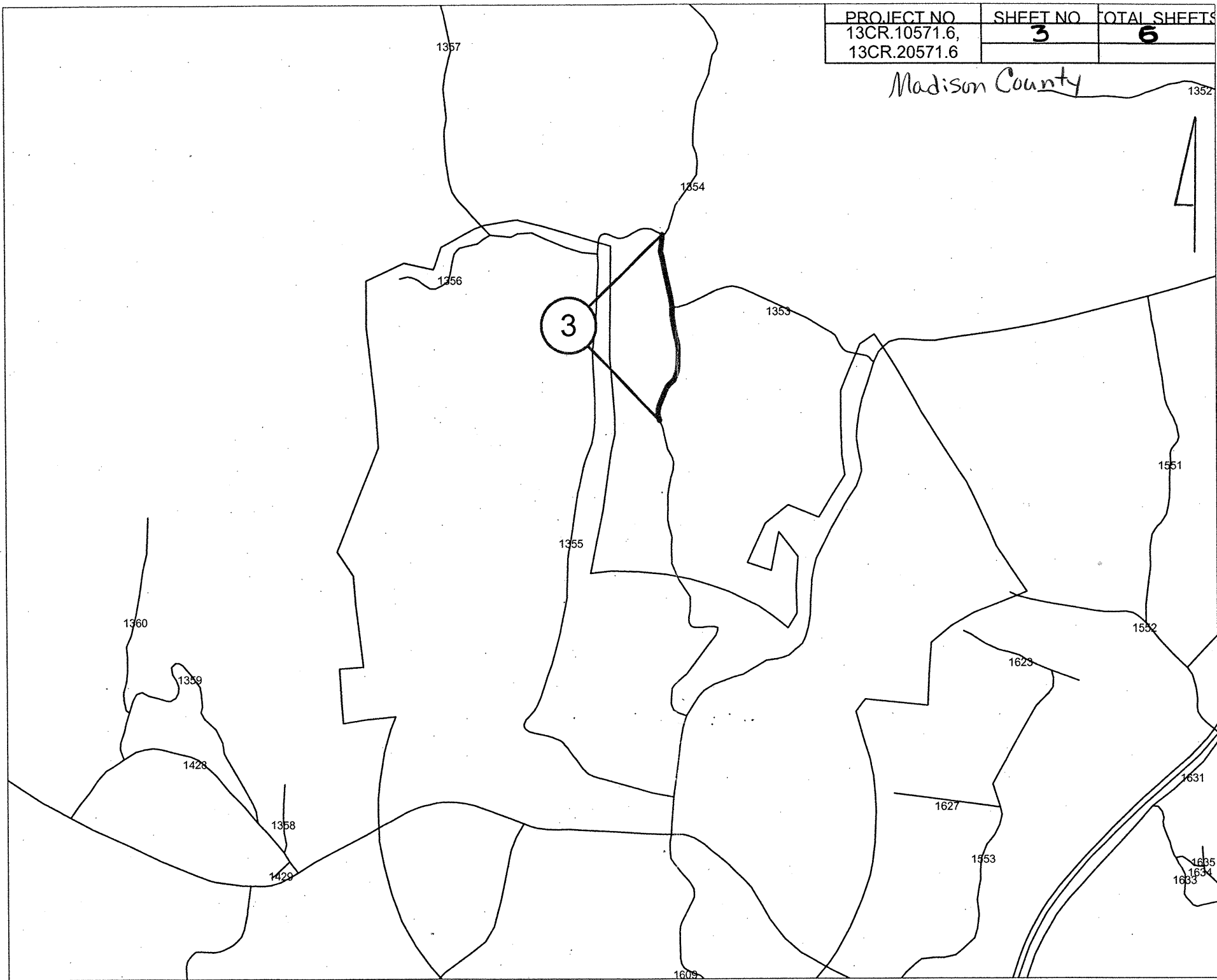


PROJECT NO	SHEET NO	TOTAL SHEETS
13CR.10571.6, 13CR.20571.6	2	5



PROJECT NO	SHEET NO	TOTAL SHEETS
13CR.10571.6, 13CR.20571.6	3	6

Madison County



1357

1354

1356

3

1353

1355

1551

1360

1359

1428

1358

1552

1623

1631

1429

1627

1553

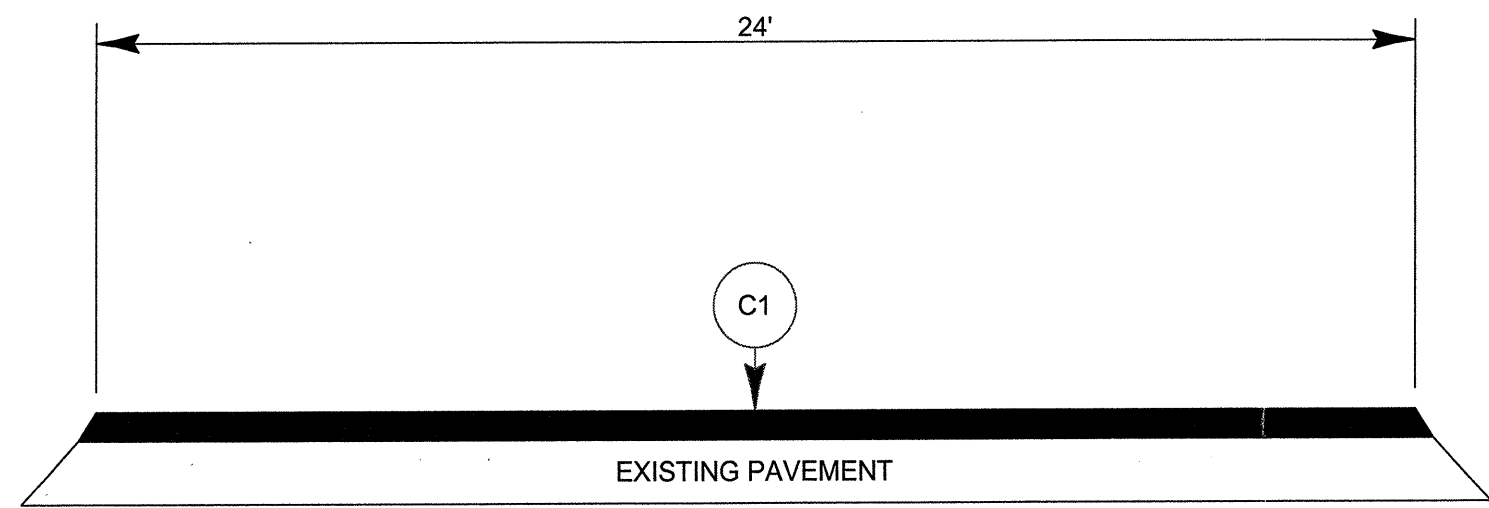
1635

1634

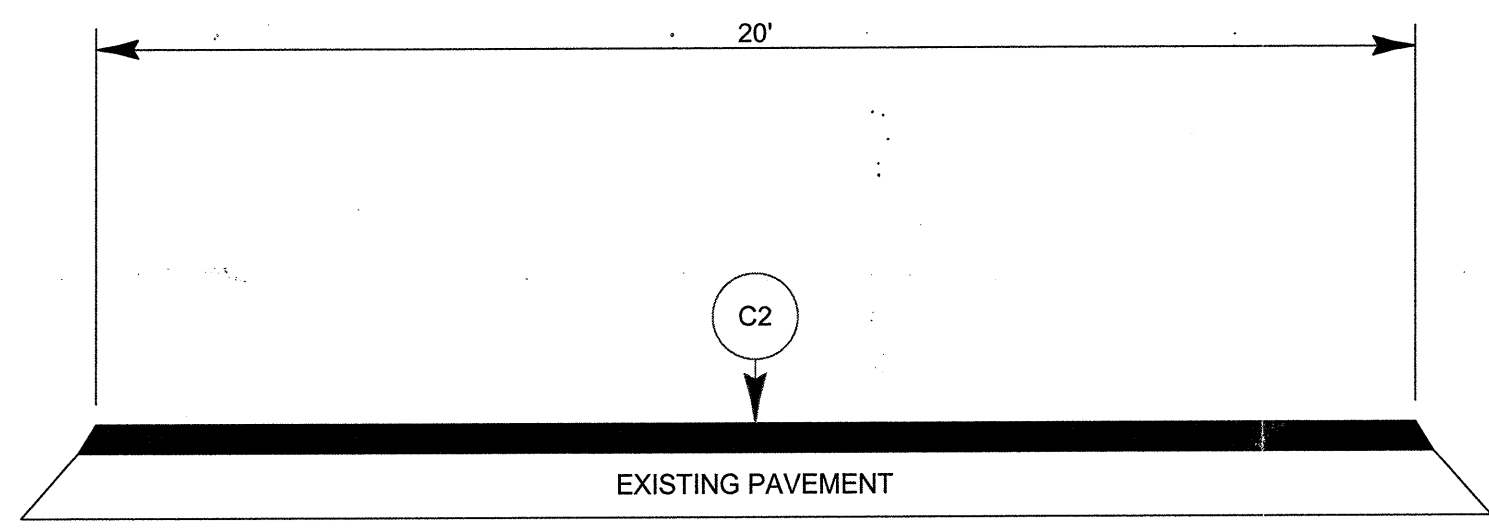
1633

1609

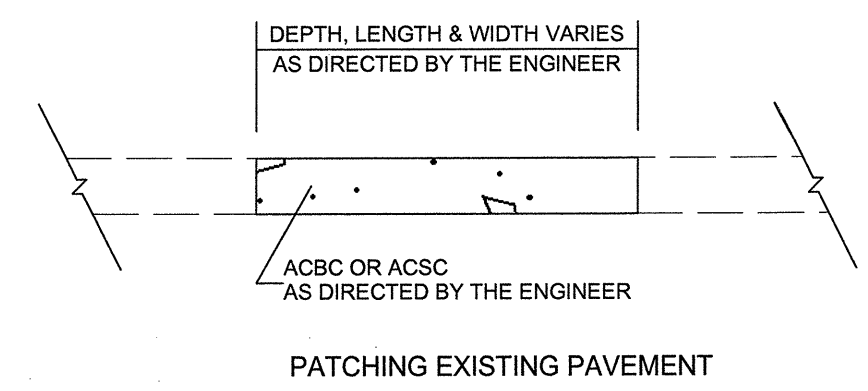
PROJECT NO. 13CR.10571.6, 13CR.20571.6	SHEET NO. 4	TOTAL SHEETS 6
-------------------------------------------	----------------	-------------------



TYPICAL SECTION NO. 1

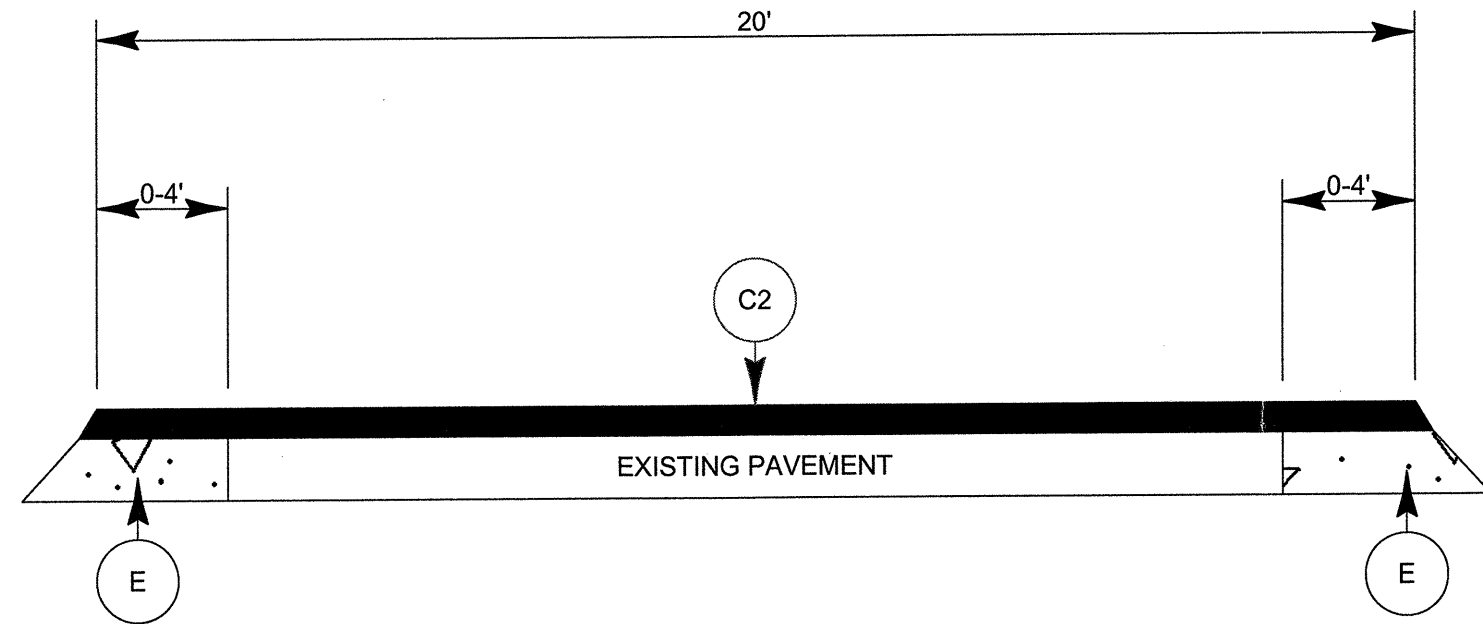


TYPICAL SECTION NO. 2



PAVEMENT SCHEDULE	
C1	PROP. APPROX 1.5" ACSC, TYPE S9.5B, AT AN AVERAGE RATE OF 168 LBS. PER SY
C2	PROP. APPROX. 1.5" ACSC, TYPE SF9.5A AT AN AVERAGE RATE OF 165 LBS. PER SY
E	PROP. APPROX. 6" ACBC, TYPE B25.0B AT AN AVERAGE RATE OF 684 LBS. PER SY

PROJECT NO.	SHEET NO.	TOTAL SHEETS
13CR.10571.6, 13CR.20571.6	5	6



TYPICAL SECTION NO. 3

PROJECT NO.	SHEET NO.	TOTAL NO.
13CR.10571.6, 13CR.20571.6	6	6

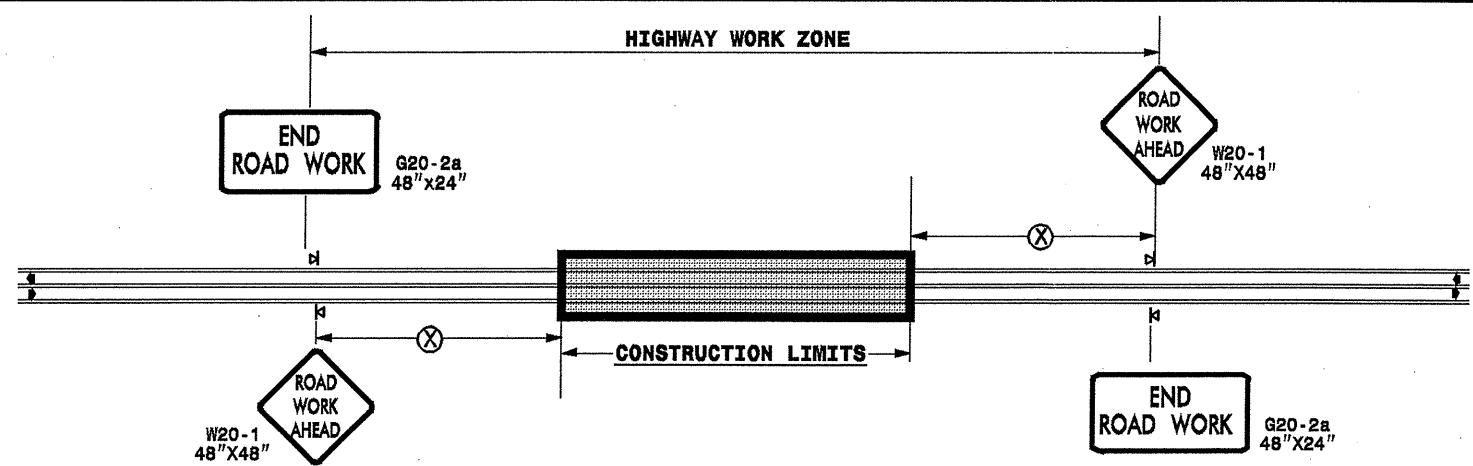
SUMMARY OF QUANTITIES

PROJECT NO	COUNTY	MAP NO	ROUTE	DESCRIPTION	TYP NO	LENGTH MI	WIDTH FT	BASE COURSE, B25.0B TONS	SURFACE COURSE, S9.5B TONS	SURFACE COURSE, SF9.5A TON	PG 64-22 PLANT MIX TONS	PATCHING EXISTING PAVEMENT TONS
13CR.10571.6	Madison	1	NC 63	.3 MI SOUTH OF SR 1190 TO BUNCOMBE COUNTY	1	1	24		1,308		78	40
		2	NC 212	TENN STATE LINE TO SR 1314	2	5.9	20			6,322	411	276
TOTAL FOR PROJ NO. 13CR.10571.6						6.9			1,308	6,322	489	316
13CR.20571.6	Madison	3	SR 1354	MARS HILL ELEMENTARY SCHOOL TO SR 1355	3	0.71	20	769		761	83	65
TOTAL FOR PROJ NO. 13CR.20571.6						0.71		769		761	83	65
GRAND TOTAL						7.61		769	1,308	7,083	572	381

THERMOPLASTIC AND PAINT QUANTITIES

PROJECT NO	COUNTY	MAP NO	ROUTE	DESCRIPTION	4685000000-E	4686000000-E	4810000000-E	4810000000-E
					4" X 90 M WHITE THERMO LF	4" X 120 M YELLOW THERMO LF	4" WHITE PAINT LF	4" YELLOW PAINT LF
13CR.10571.6	Madison	1	NC 63	.3 MI SOUTH OF SR 1190 TO BUNCOMBE COUNTY	10,560	10,560		
		2	NC 212	TENN STATE LINE TO SR 1314	62,304	62,304		
TOTAL FOR PROJ NO. 13CR.10571.6					72,864	72,864		
13CR.20571.6	Madison	3	SR 1354	MARS HILL ELEMENTARY SCHOOL TO SR 1355			14,995	14,995
TOTAL FOR PROJ NO. 13CR.20571.6							14,995	14,995
TOTAL					72,864	72,864	14,995	14,995
GRAND TOTAL					72,864	72,864	29,990	

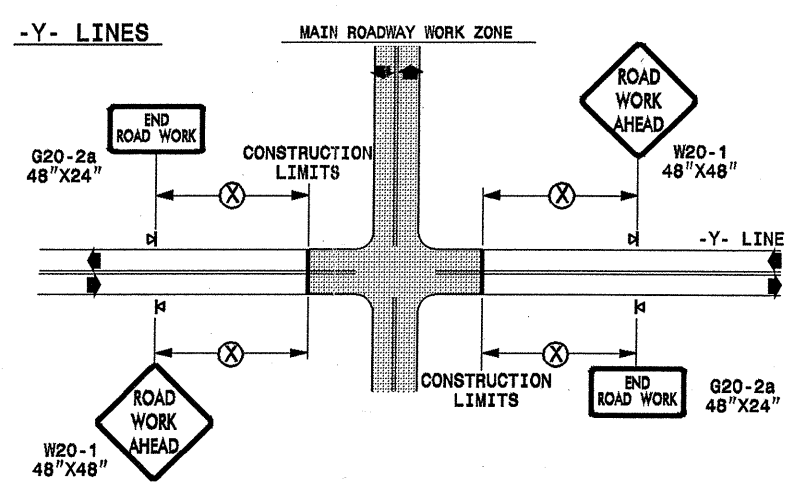
TWO-WAY UNDIVIDED ** (L-LINES)



POSTED SPEED LIMIT (M.P.H.)	RECOMMENDED MINIMUM SIGN SPACING
≤ 50	500'
≥ 55	1000'

STATE OF NORTH CAROLINA
DEPT. OF TRANSPORTATION
DIVISION OF HIGHWAYS
RALEIGH, N.C.

ROADWAYS INTERSECTING ALONG 2 WAY UNDIVIDED WORK ZONE (Y-LINES)



DETAIL DRAWING
FOR TWO-WAY UNDIVIDED
WORK ZONE WARNING SIGNS

GENERAL NOTES

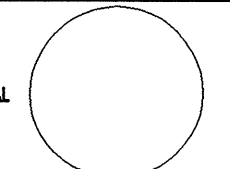
- USE FLUORESCENT ORANGE SHEETING (TYPE VII OR HIGHER) ON ALL ADVANCE WORK ZONE SIGNS.
- DO NOT INSTALL ADVANCE WARNING SIGNS MORE THAN 3 DAYS PRIOR TO BEGINNING OF WORK.
- ALL SIGN SPACING DIMENSIONS ARE APPROXIMATE, FIELD ADJUST AS NECESSARY OR AS DIRECTED.
- USE PORTABLE WORK ZONE SIGNS ONLY WITH PORTABLE WORK ZONE SIGN STANDS SPECIFICALLY DESIGNED FOR ONE ANOTHER. PORTABLE WORK ZONE SIGNS MAY BE ROLL UP OR APPROVED COMPOSITE.
- PROVIDE PORTABLE WORK ZONE SIGN STANDS, PORTABLE SIGNS AND SIGN SHEETING WHICH ARE LISTED ON THE NORTH CAROLINA DEPARTMENT OF TRANSPORTATION'S APPROVED PRODUCT LIST OR ACCEPTED AS TRAFFIC QUALIFIED BY THE TRAFFIC CONTROL UNIT.
- ** TWO-WAY UNDIVIDED ADVANCE WARNING SIGN CONFIGURATION MAY BE USED ON URBAN MULTI-LANE FACILITIES WHERE CONDITIONS LIMIT THE USE OF DUAL MOUNTED SIGNS AS DETERMINED BY THE ENGINEER.

LEGEND

⊠ PORTABLE SIGN

← DIRECTION OF TRAFFIC FLOW

SHEET 1 OF 1

APPROVED: _____	DATE: _____	DETAIL DRAWING FOR TWO-WAY UNDIVIDED ADVANCED WORK ZONE WARNING SIGNS	
			
		DATE: _____	10-98
DWG. BY: _____	DESIGN BY: _____	10-98	03/04
REVIEWED BY: _____	FILE	01/01	11/04

18-NOV-2008 11:26
 f:\resurfacing\10508\resurfacing2009\div13\c202209_13cr105716etc_madison.nc63etc.c202209_13cr105716etc_2wayundivurbfrwysjuly2006.dgn
 pseyemore AT WZTC237502