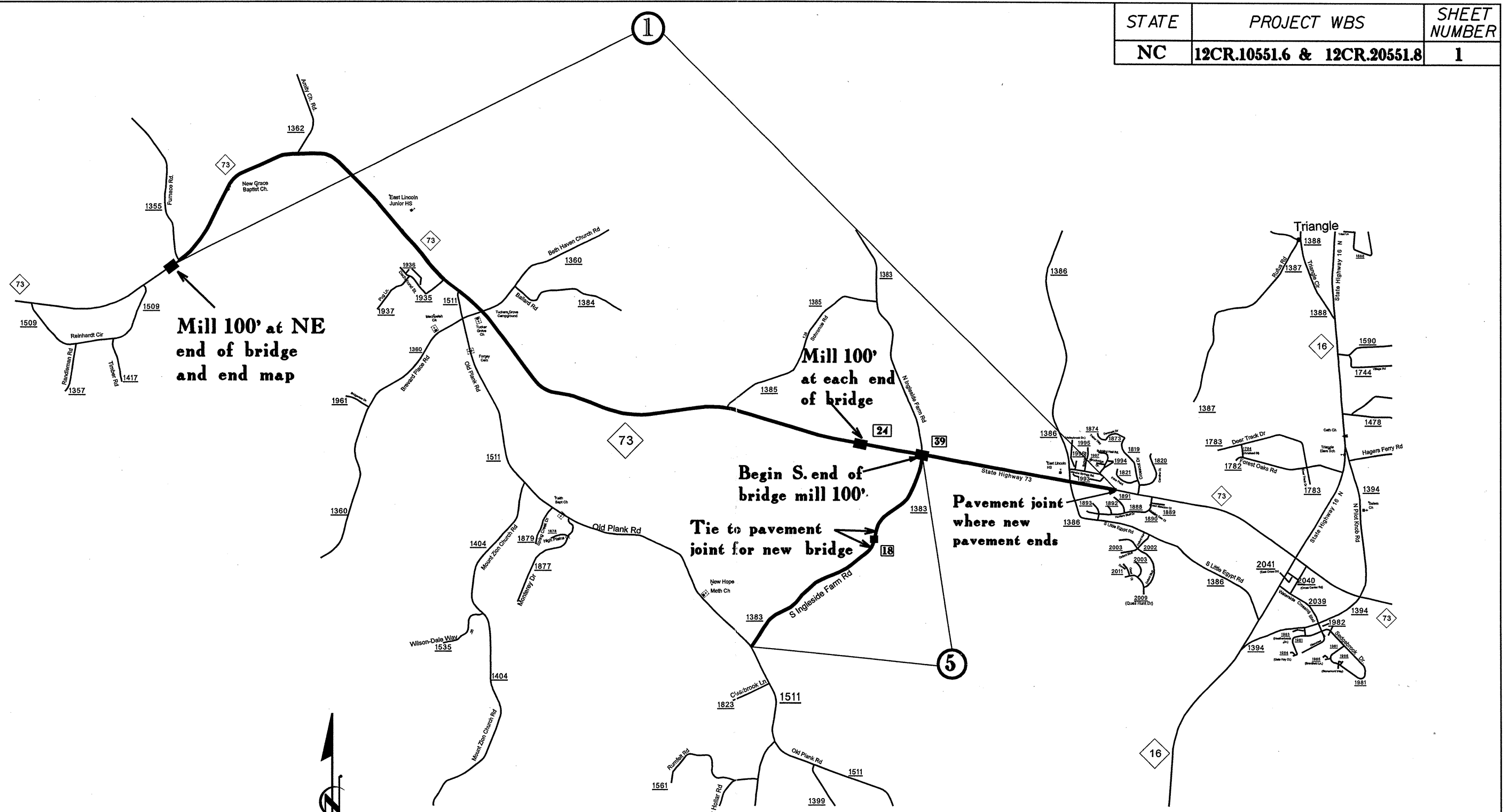


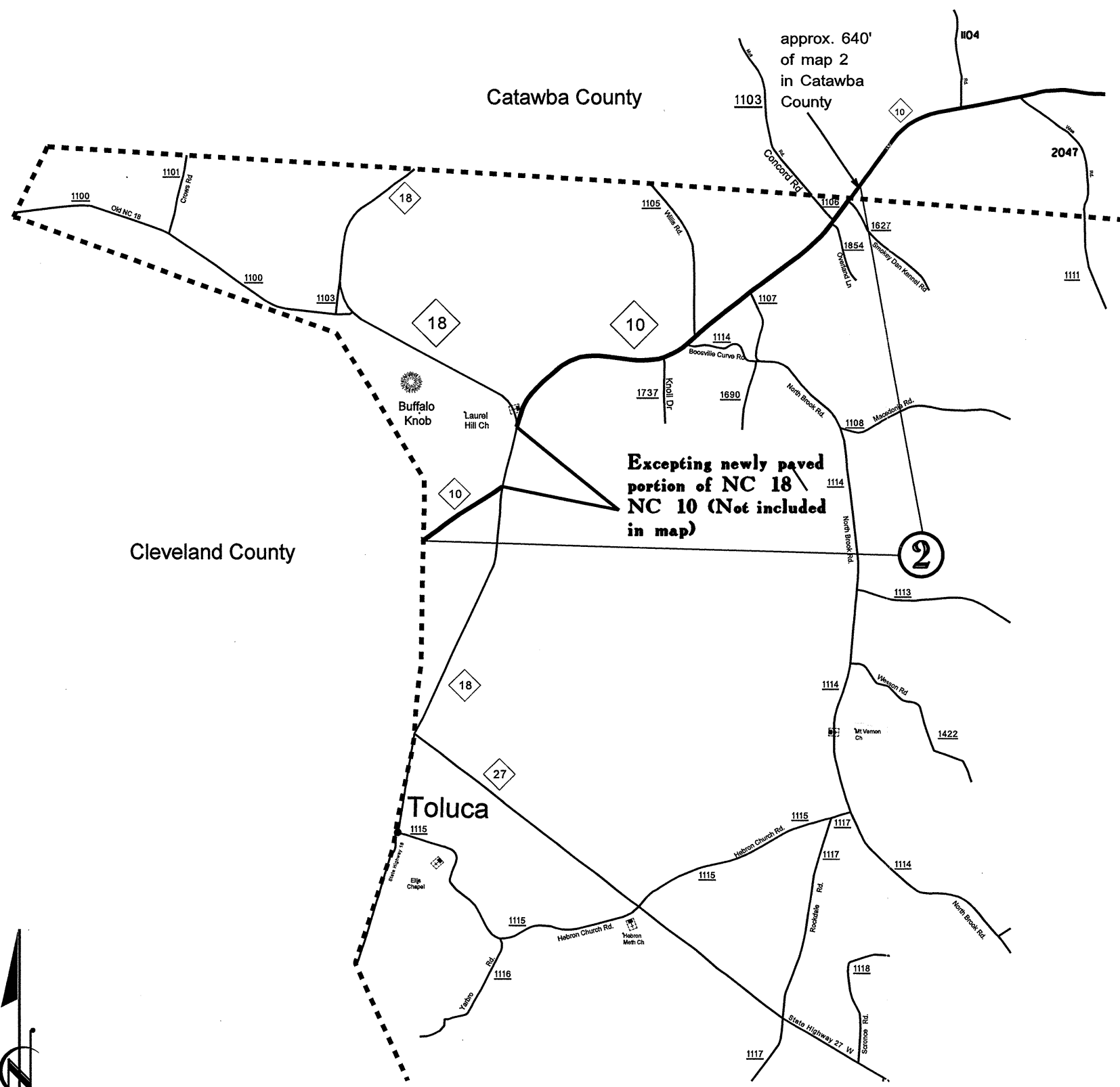
STATE	PROJECT WBS	SHEET NUMBER
NC	12CR.10551.6 & 12CR.20551.8	1



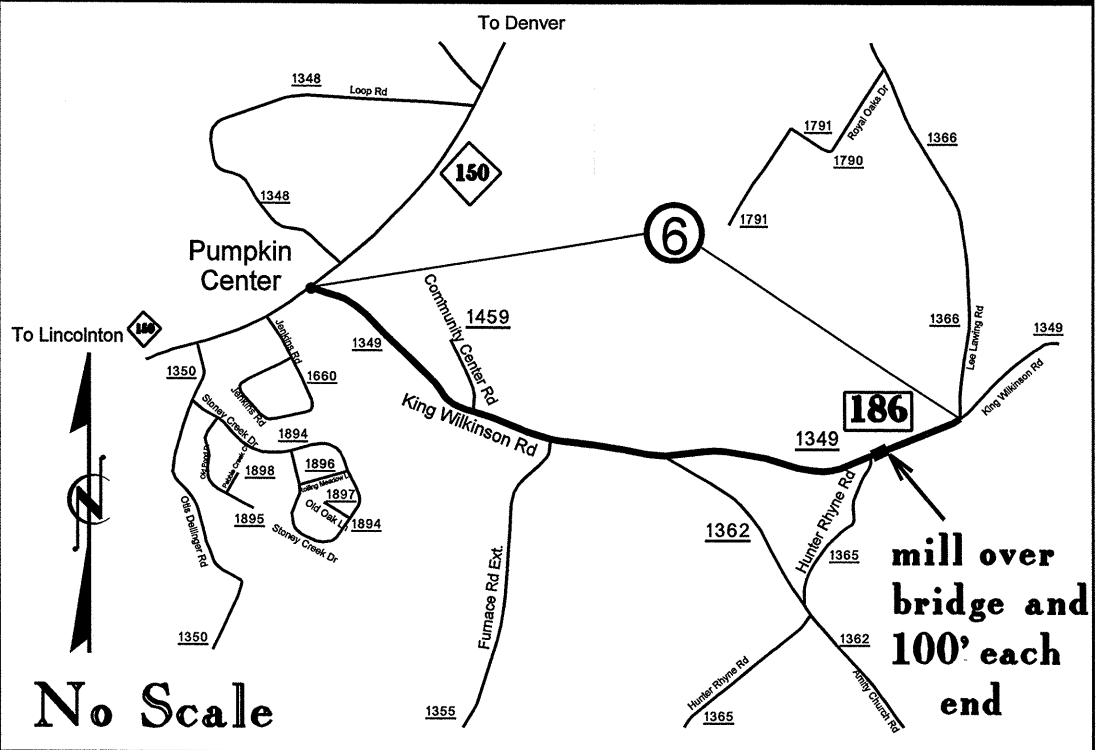
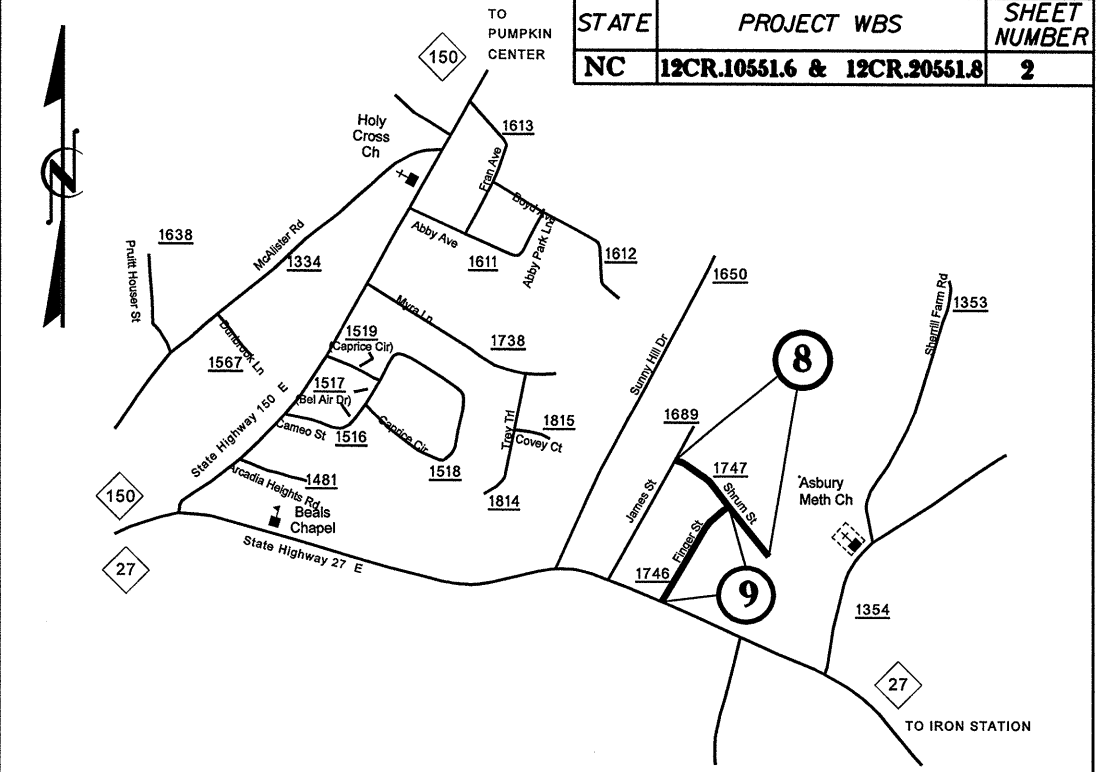
No Scale

2008-2009
Resurfacing Map
LINCOLN COUNTY NC

STATE	PROJECT WBS	SHEET NUMBER
NC	12CR.10551.6 & 12CR.20551.8	2



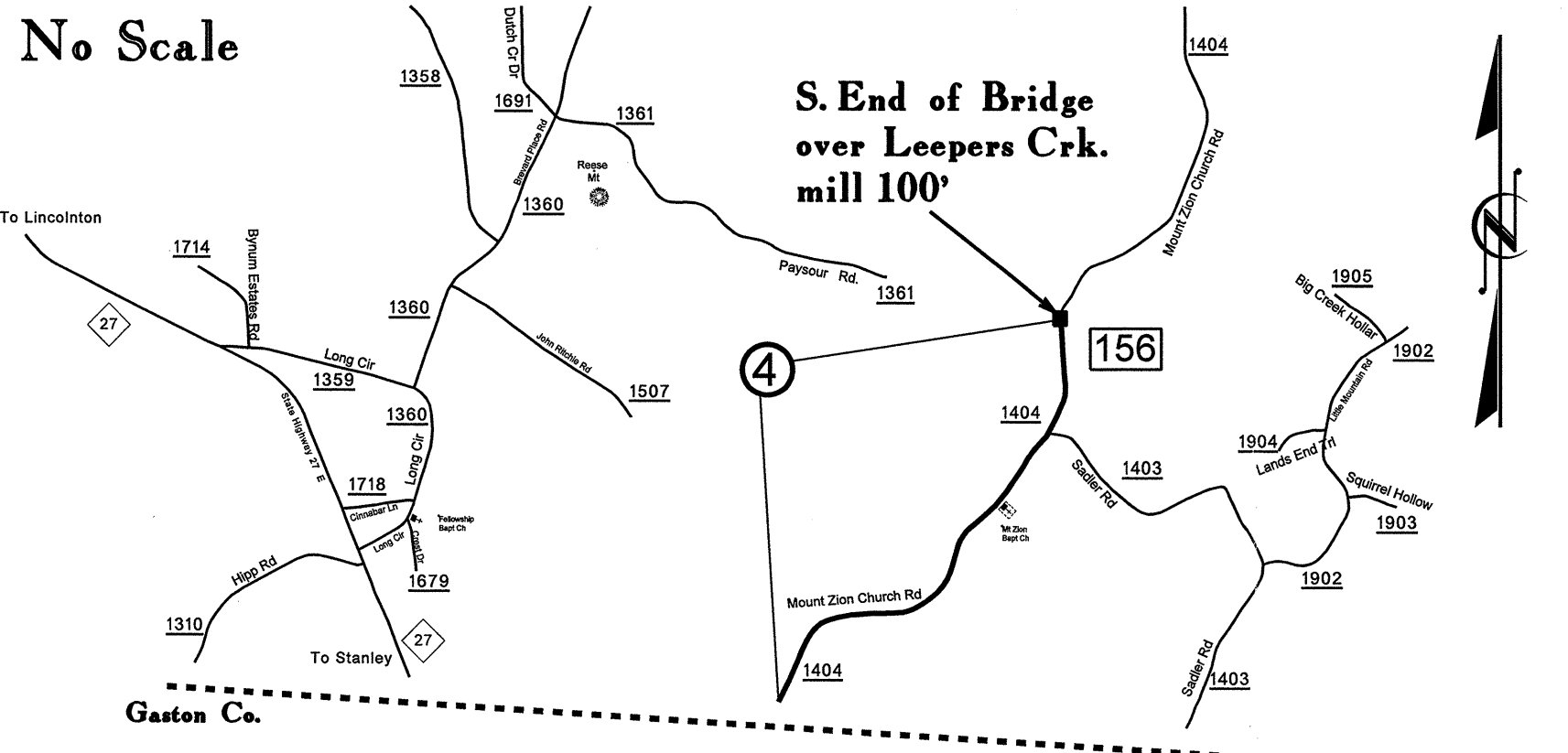
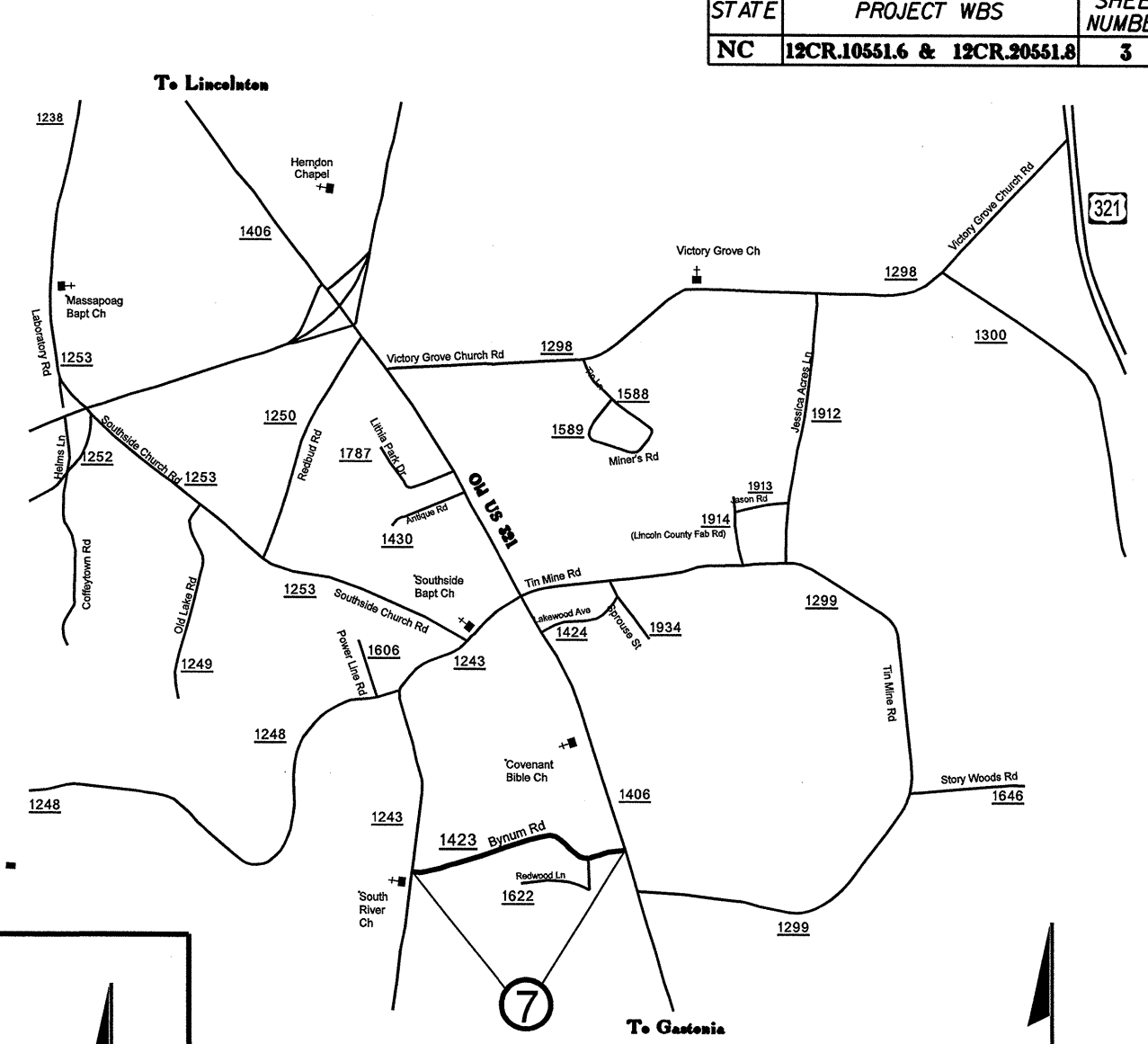
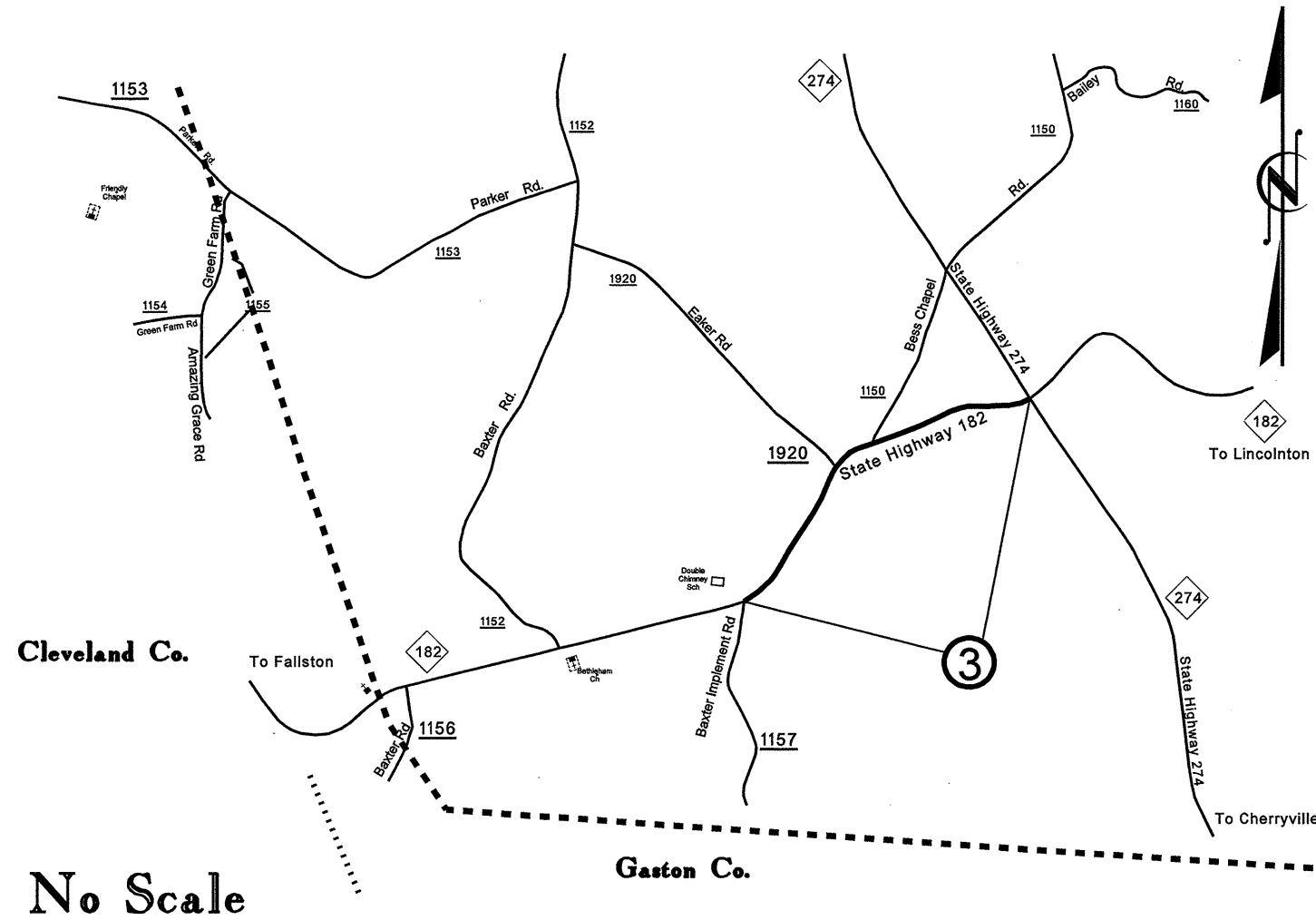
No Scale



No Scale

2008 - 2009
Resurfacing Map
LINCOLN COUNTY NC

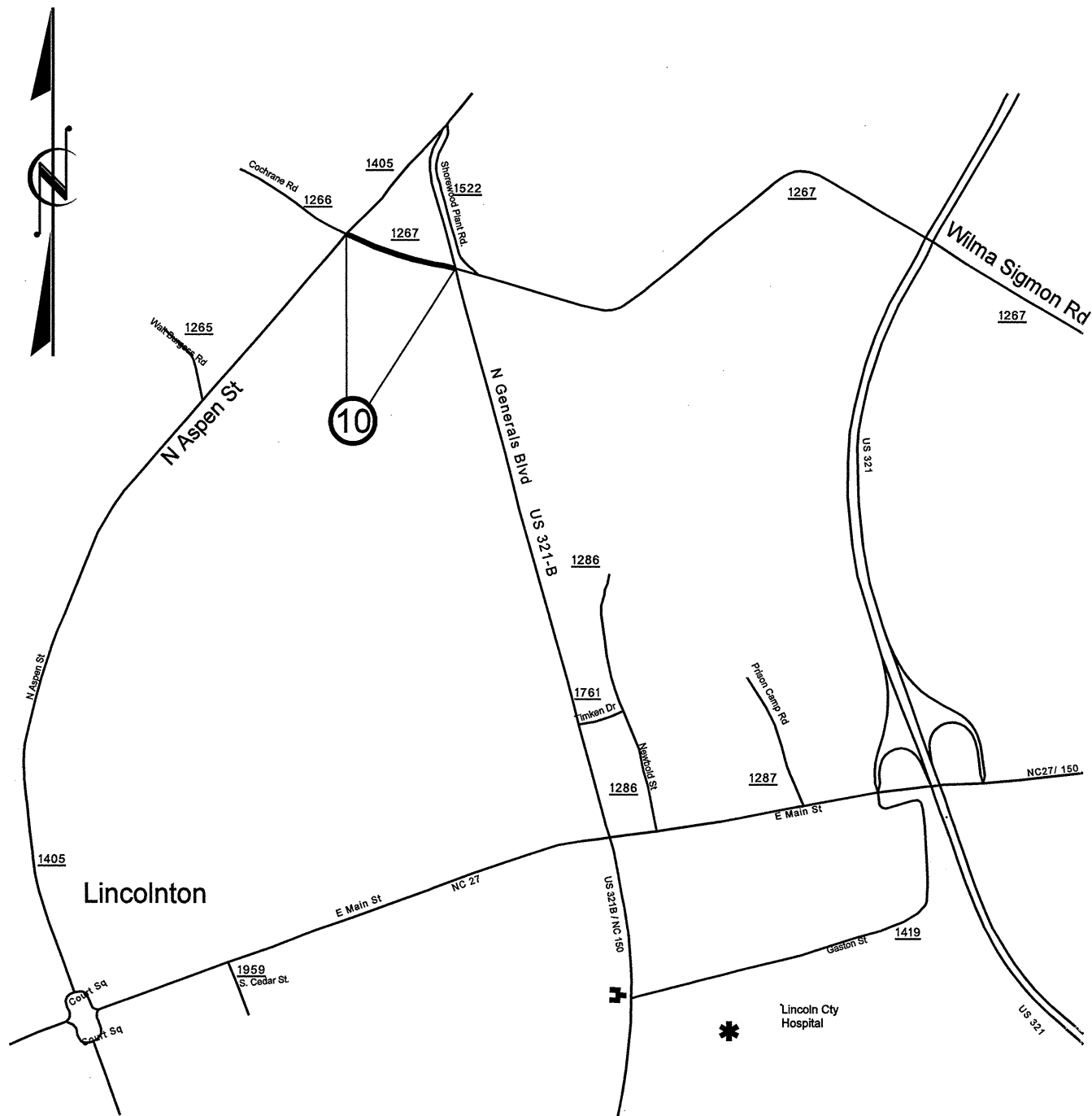
STATE	PROJECT WBS	SHEET NUMBER
NC	12CR.10551.6 & 12CR.20551.8	3



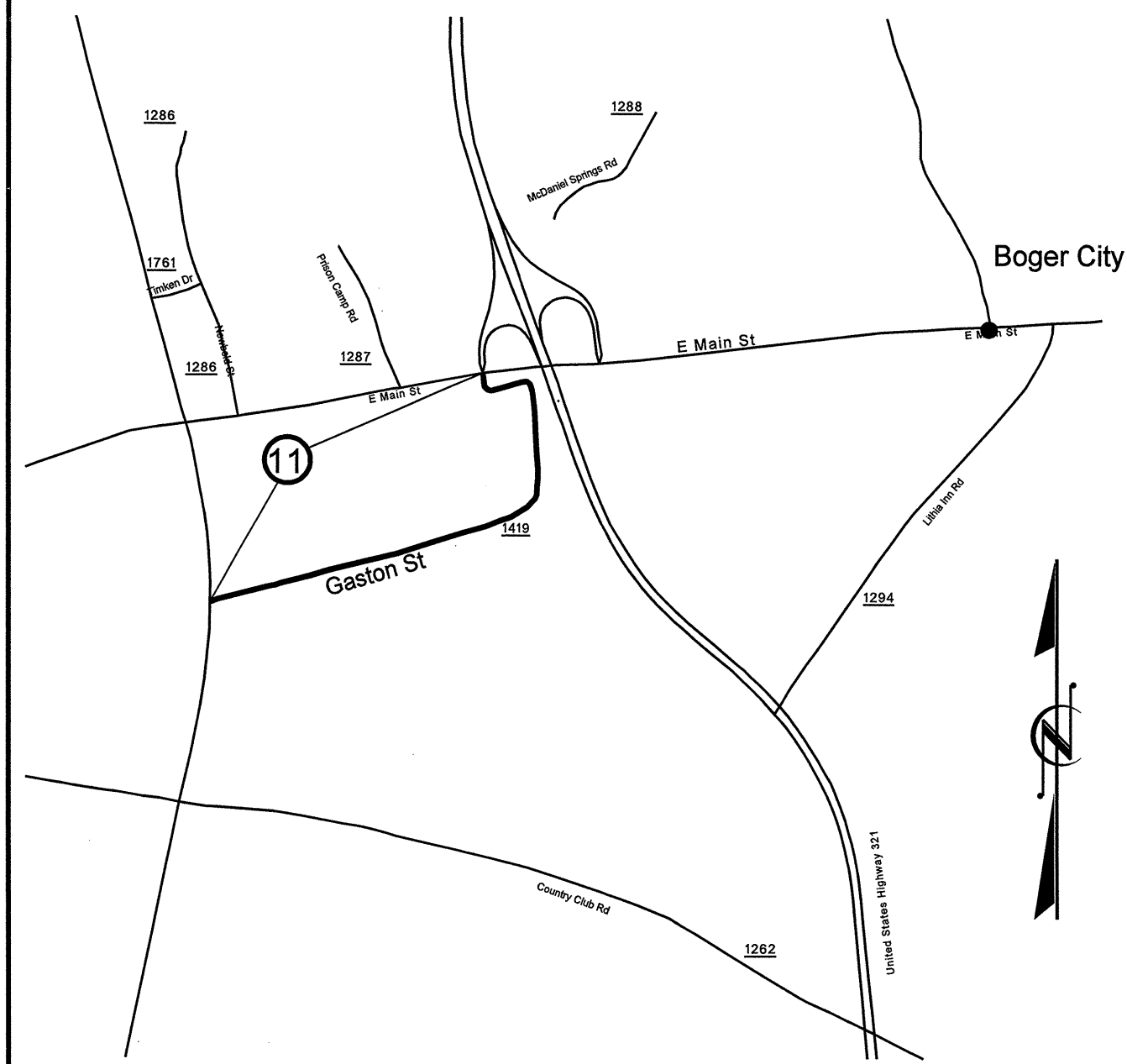
No Scale

2008 - 2009
Resurfacing Map
LINCOLN COUNTY NC

STATE	PROJECT WBS	SHEET NUMBER
NC	12CR.10551.6 & 12CR.20551.8	4



No Scale

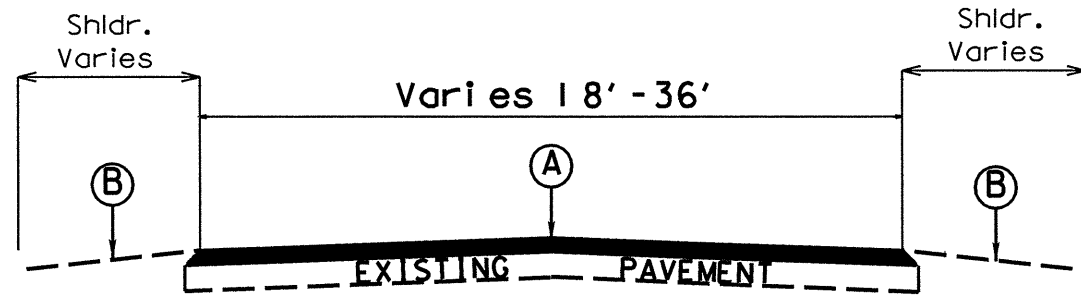


No Scale

2008 - 2009
Resurfacing Map

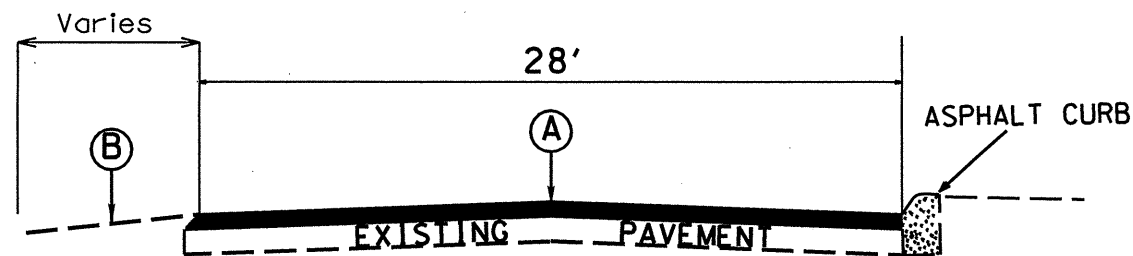
LINCOLN COUNTY NC

STATE	PROJECT WBS	SHEET NUMBER
NC	12CR.10551.6 & 12CR.20551.8	5



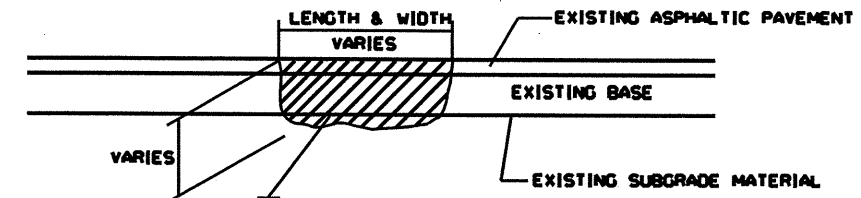
TYPICAL SECTION NO. 1

- MAP # 1 - # 5 (entire maps)
- MAP # 7 - # 9 (entire maps)
- MAP # 10 STA. 0+00 TO STA 3+00
STA. 8+50 TO STA10+00
- MAP # 11 (entire map)



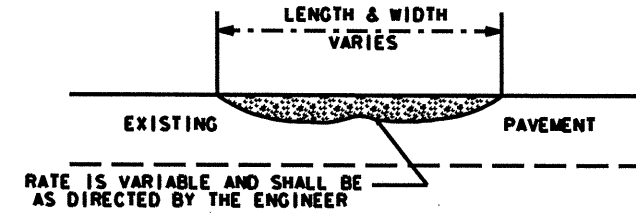
TYPICAL SECTION NO. 2

MAP # 6 STA. 15+50 TO STA 20+00

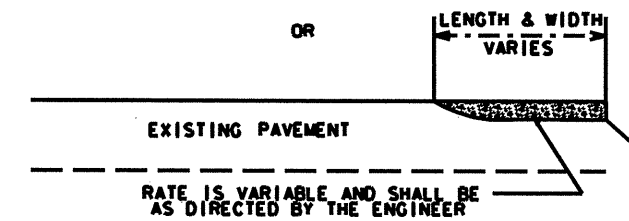


MILL EXISTING ASPHALT PAVEMENT AND REMOVE EXISTING LOOSE BASE AND/OR SUBGRADE MATERIAL AND REPLACE WITH ACBC OR ACSC AS DIRECTED BY THE ENGINEER

PATCHING EXISTING PAVEMENT



OR



ASPHALT CONCRETE SURFACE COURSE TYPE S9.5B. (LEVELING COURSE)

PAVEMENT SCHEDULE	
A	PROP. APPROX. 1½" ASPHALT CONCRETE SURFACE COURSE, TYPE S9.5B, AT AN AVERAGE RATE OF 168 LBS. PER SQ. YD.
B	EARTH MATERIAL (SHOULDER RECONSTRUCTION)

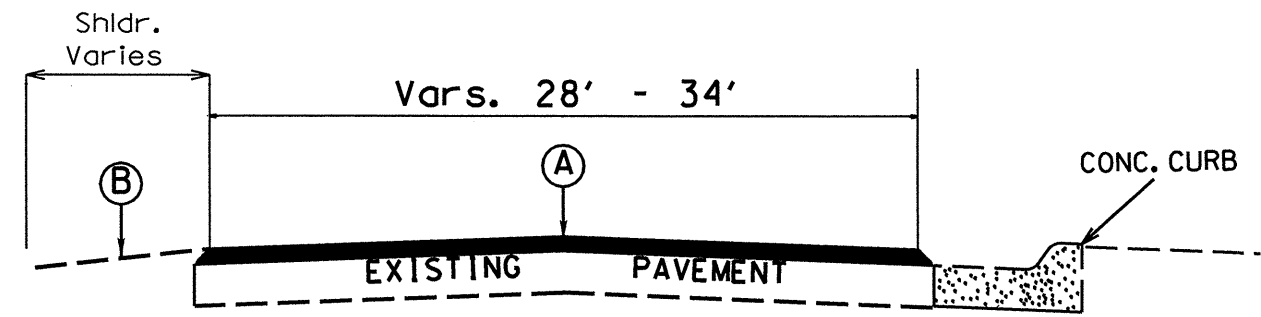
General Notes:

- * Pavement edge slopes are 1:1 unless specified otherwise.
- * Mill bridge approaches 100' to provide a smooth transition or as directed by the Engineer.

**Stations increase to the N & E

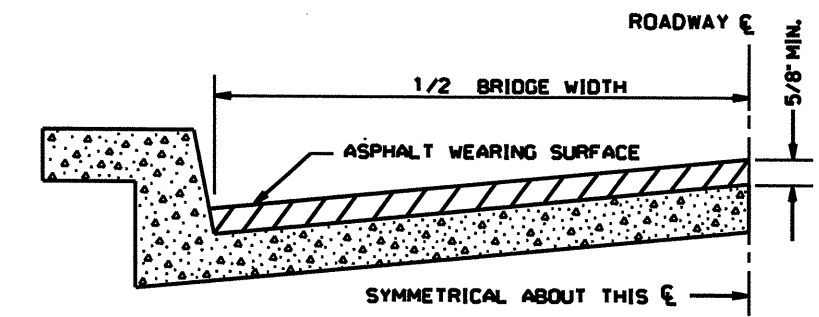
2008-2009
Resurfacing Program
Typical Sections
Lincoln County NC

STATE	PROJECT WBS	SHEET NUMBER
NC	12CR.10551.6 & 12CR.20551.8	6



TYPICAL SECTION NO. 3

MAP # 6 STA. 20+50 TO STA 21+50
 MAP # 10 STA. 3+00 TO STA 8+50



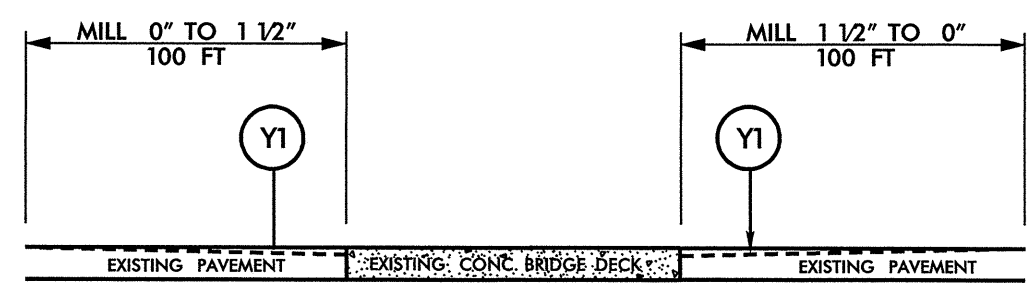
BRIDGE HALF TYPICAL SECTION

FOR BRIDGES WITH FLOOR DRAINS, CARE SHALL BE EXERCISED IN PLACING THE WEARING SURFACE AROUND FLOOR DRAINS SO AS NOT TO HINDER EFFECTIVE DRAINAGE. ALL DRAINS SHALL BE LEFT OPEN.

THE PROPOSED WEARING SURFACE SHALL VARY IN THICKNESS AS NECESSARY TO PROVIDE A SMOOTH RIDING SURFACE. A THICKNESS OF NOT LESS THAN 5/8" SHALL BE PROVIDED. THE MAXIMUM THICKNESS SHALL PREFERABLY BE 1-1/2" UNLESS IT IS IMPRACTICAL TO PROVIDE A SMOOTH RIDING SURFACE OTHERWISE.

NOTES

ALL UNPAVED S.R. ROADS TO BE SURFACED 50' FROM EDGE OF PAVEMENT OF MAIN PROJECT.
 ALL PAVED S.R. ROADS TO BE RESURFACED TO THE ENDS OF THE RADII, OR AS DIRECTED BY THE ENGINEER.
 EDGES, PAVEMENT WIDENING, INTERSECTIONS AND BRIDGE FLARES ARE INCLUDED IN THE TABLE OF QUANTITIES.
 SHOULDERS AND DITCHES ARE TO BE CONSTRUCTED BY OTHERS UNLESS OTHERWISE NOTED.
 BRIDGES TO BE RESURFACED AT LOCATIONS AND TO DEPTH AS DIRECTED BY THE ENGINEER.



DETAIL A
 MILLING BRIDGE APPROACHES

PAVEMENT SCHEDULE	
A	PROP. APPROX. 1 1/2" ASPHALT CONCRETE SURFACE COURSE, TYPE S9.5B, AT AN AVERAGE RATE OF 168 LBS. PER SQ. YD.
B	EARTH MATERIAL (SHOULDER RECONSTRUCTION)
Y1	MILL ASPHALT PAVEMENT, 0" TO 1.5" DEPTH

General Notes:

- * Pavement edge slopes are 1:1 unless specified otherwise.
- * Mill bridge approaches 100' to provide a smooth transition or as directed by the Engineer.

**Stations increase to the N & E

2008-2009
 Resurfacing Program
 Typical Sections
 Lincoln County NC

PROJECT NO.	SHEET NO.	TOTAL NO.
12CR.10551.6 & 12CR.20551.8	7	

SUMMARY OF QUANTITIES

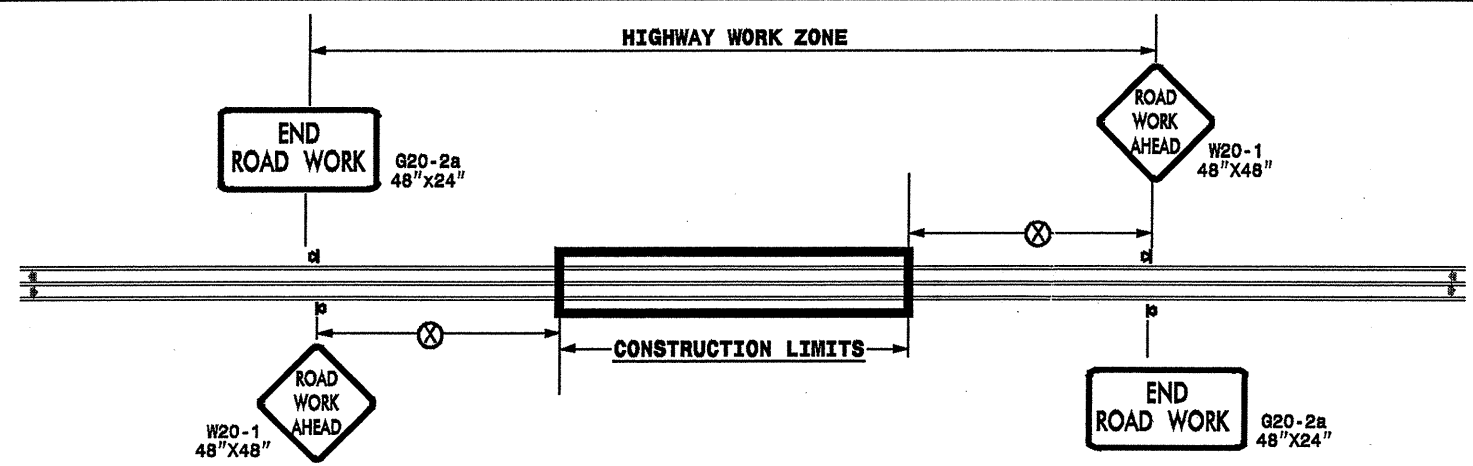
PROJECT NO	COUNTY	MAP NO	ROUTE	DESCRIPTION	TYP NO	LENGTH MI	WIDTH FT	INCIDENTAL STONE BASE TONS	SHOULDER RECONSTRUCTION SMI	0" TO 1.5" MILLING SY	SURFACE COURSE, S9.5B TONS	LEVELING COURSE, S9.5B TONS	PG 64-22 PLANT MIX TONS	PATCHING EXISTING PAVEMENT TONS	ADJ. OF MANHOLES EA	ADJ. OF METER OR VALVE BOX EA
12CR.10551.6	Lincoln	1	NC 73	FROM EXST. PAVEMENT JOINT 0.30 MI. EAST OF SR 1386 W. TO BRIDGE #3 LOCATED 175' W. OF SR 1355	1	6.80	varies 24 - 36	300	13.60	800	9,848	750	640	1,000	1	2
12CR.10551.6	Lincoln / Catawba	2	NC 10	FROM 640' NE OF CAT. - LINC. CO TO CLEV. CO EXCEPTING NC 18 PORTION	1	2.26	22	80	4.52		2,739	280	183	280		
12CR.10551.6	Lincoln	3	NC 182	FROM NC 274 TO SR 1157	1	1.00	22	40	2.00		1,199	120	80	150		
TOTAL FOR PRIMARY RD. RESURFACING						10.06		420	20.12	800	13,786	1,150	903	1,430	1	2
12CR.20551.8	Lincoln	4	SR 1404 (MT ZION CH. RD.)	FROM GASTON CO. LINE TO BRDG. #156 OVER LEEPERS CRK.	1	1.49	18.5	60	2.96	222	1,504	225	105	300		
12CR.20551.8	Lincoln	5	SR 1383 (INGLESIDE FARM RD.)	FROM SR 1511 TO BRIDGE OVER NC 73	1	1.62	18.5	60	3.24	222	1,636	175	110	250		
12CR.20551.8	Lincoln	6	SR 1349 (KING WILKINSON RD.)	FROM NC 150 TO SR 1366	1,2,3	1.90	varies 18.5 - 28	60	3.70	440	2,025	300	141	300		
12CR.20551.8	Lincoln	7	SR 1423 (BYNUM RD.)	FROM 321B TO SR 1243	1	0.43	18	40	0.86		422	60	29	60		
12CR.20551.8	Lincoln	8	SR 1747 (SHRUM ST.)	FROM SR 1689 TO DEAD END	1	0.20	19	20	0.40		198	30	14	20		
12CR.20551.8	Lincoln	9	SR 1746 (FINGER ST.)	FROM NC 27 TO SR 1747	1	0.17	19	20	0.34		168	20	11	20		
12CR.20551.8	Lincoln	10	SR 1267 (SIGMON RD)	FROM SR 1405 TO US321B (GENERALS BLVD)	1,3	0.19	varies 22 - 34	20	0.22		288	40	20	60		1
12CR.20551.8	Lincoln	11	SR 1419 (GASTON ST. EXT.)	FROM US 321B/NC150 TO NC 27	1	0.85	varies 22 - 34	20	1.70		1,085	150	75	200	1	
TOTAL FOR SECONDARY RD. RESURFACING						6.85		300	13.42	884	7,326	1,000	505	1,210	1	1
GRAND TOTAL						16.91		720	33.54	1684	21,112	2,150	1,408	2,640	2	3

PROJECT NO.	SHEET NO.	TOTAL NO.
12CR.10551.6 & 12CR.20551.8	8	

THERMOPLASTIC AND PAINT QUANTITIES

PROJECT NO	COUNT	MAP	ROUTE	DESCRIPTION	4685000000-E	4686000000-E			4695000000-E	4705000000-E	4710000000-E	4721000000-E		4725000000-E					4810000000-E		4905000000-N	
					4" X 90 M WHITE THERMO	4" X 120 M YELLOW THERMO	4" X 120 M WHITE THERMO	8" X 90 M WHITE THERMO	16" X 120 M WHITE THERMO	24" X 120 M WHITE THERMO	THERMO MSG SCHOOL 120 M	THERMO RXR 120 M	THERMO STR & RT ARROW 90 M	THERMO STR & LT ARROW 90 M	THERMO LT ARROW 90 M	THERMO RT ARROW 90 M	THERMO STR. ARROW	4" WHITE PAINT	4" YELLOW PAINT	SNOW PLOWABLE MARKERS		
					LF	LF	LF	LF	LF	LF	EA	EA	EA	EA	EA	EA	EA	EA	EA	EA	EA	
12CR.10551.6	Lincoln	1	NC 73	FROM EXST. PAVEMENT JOINT 0.30 MI. EAST OF SR 1386 W. TO BRIDGE #3 LOCATED 175' W. OF SR 1355	71,500	74,500	4,000			340	24		2	2	21	8	2				575	
12CR.10551.6	Lincoln / Catawba	2	NC 10	FROM 640' NE OF CAT. - LINC. CO TO CLEV. CO EXCEPTING NC 18 PORTION																47,800	47,800	165
12CR.10551.6	Lincoln	3	NC 182	FROM NC 274 TO SR 1157																22,000	21,000	70
TOTAL FOR PROJ NO. primary					71,500	74,500	4,000			340	24		2	2	21	8	2			69,800	68,800	810
						78,500					24		35						138,600			
12CR.20551.8	Lincoln	4	SR 1404 (MT ZION CH. RD.)	FROM GASTON CO. LINE TO BRDG. #156 OVER LEEPERS CRK.																31,500	31,500	
12CR.20551.8	Lincoln	5	SR 1383 (INGLESIDE FARM RD)	FROM SR 1511 TO BRIDGE OVER NC 73																35,000	35,000	
12CR.20551.8	Lincoln	6	SR 1349 (KING WILKINSON RD)	FROM NC 150 TO SR 1366						30										41,000	41,000	
12CR.20551.8	Lincoln	7	SR 1423 (BYNUM RD)	FROM 321B TO SR 1243																9,075	9,075	
12CR.20551.8	Lincoln	8	SR 1747 (SHRUM ST.)	FROM SR 1689 TO DEAD END																		
12CR.20551.8	Lincoln	9	SR 1746 (FINGER ST.)	FROM NC 27 TO SR 1747																		
12CR.20551.8	Lincoln	10	SR 1267 (SIGMON RD)	FROM SR 1405 TO US321B (GENERALS BLVD)						30					4					2,900	4,550	
12CR.20551.8	Lincoln	11	SR 1419 (GASTON ST. EXT.)	FROM US 321B/150 TO NC 27				44	100	110		4	2	3	1	3				18,500	18,000	
TOTAL FOR PROJ NO. secondary								44	100	170		4	2	3	5	3				137,975	139,125	
											4		13						277,100			
GRAND TOTAL					71,500	74,500	4,000	44	100	510	24	4	4	5	26	11	2			207,775	207,925	810
						78,500					28		48						415,700			

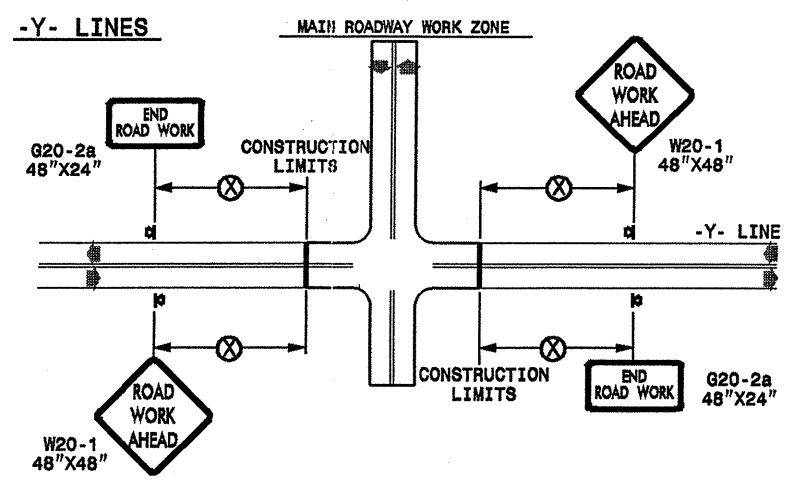
TWO-WAY UNDIVIDED ** (L-LINES)



POSTED SPEED LIMIT (M.P.H.)	RECOMMENDED MINIMUM SIGN SPACING
≤ 50	500'
≥ 55	1000'

STATE OF NORTH CAROLINA
DEPT. OF TRANSPORTATION
DIVISION OF HIGHWAYS
RALEIGH, N.C.

ROADWAYS INTERSECTING ALONG 2 WAY UNDIVIDED WORK ZONE (Y-LINES)



GENERAL NOTES

- USE FLUORESCENT ORANGE SHEETING (TYPE VII OR HIGHER) ON ALL ADVANCE WORK ZONE SIGNS.
- DO NOT INSTALL ADVANCE WARNING SIGNS MORE THAN 3 DAYS PRIOR TO BEGINNING OF WORK.
- ALL SIGN SPACING DIMENSIONS ARE APPROXIMATE, FIELD ADJUST AS NECESSARY OR AS DIRECTED.
- USE PORTABLE WORK ZONE SIGNS ONLY WITH PORTABLE WORK ZONE SIGN STANDS SPECIFICALLY DESIGNED FOR ONE ANOTHER. PORTABLE WORK ZONE SIGNS MAY BE ROLL UP OR APPROVED COMPOSITE.
- PROVIDE PORTABLE WORK ZONE SIGN STANDS, PORTABLE SIGNS AND SIGN SHEETING WHICH ARE LISTED ON THE NORTH CAROLINA DEPARTMENT OF TRANSPORTATION'S APPROVED PRODUCT LIST OR ACCEPTED AS TRAFFIC QUALIFIED BY THE TRAFFIC CONTROL UNIT.
- ** TWO-WAY UNDIVIDED ADVANCE WARNING SIGN CONFIGURATION MAY BE USED ON URBAN MULTI-LANE FACILITIES WHERE CONDITIONS LIMIT THE USE OF DUAL MOUNTED SIGNS AS DETERMINED BY THE ENGINEER.

LEGEND

◀ PORTABLE SIGN

➔ DIRECTION OF TRAFFIC FLOW

DETAIL DRAWING
FOR TWO-WAY UNDIVIDED
WORK ZONE WARNING SIGNS

SHEET 1 OF 1

APPROVED: _____	DATE: _____	<p>DETAIL DRAWING FOR TWO-WAY UNDIVIDED ADVANCED WORK ZONE WARNING SIGNS</p>	<p>SCALE: NONE</p>		REVISIONS
					7-98 10/01
			10-98 03/04		
			01/01 11/04		

29-APR-2009 14:43
 S:\Signing\Resurfacing\030509\Resurfacing\030509\Div12\C202347_12CR10551.8x2_Catowba\Inconh_NC73e\c\C202347_12CR10551.8x2_Catowba\Inconh_2wayundivurbfrwys\July2006_portable.dgn
 Schleich AT TEL2853