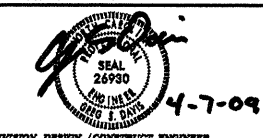


8/17/99

REVISIONS

07-APR-2009 09:05  
D:\ad\leg\nc\78\psh\nc78\_pmp\_notes.dgn

PROJECT REFERENCE NO. <i>R-5141</i>	SHEET NO. <i>PM-1</i>
RW SHEET NO.	
	
DIVISION DESIGN / CONSTRUCTION ENGINEER	
PAVEMENT MARKING LEGEND	
<input type="checkbox"/> --CRYSTAL / RED PAVEMENT MARKER <input type="checkbox"/> --YELLOW / YELLOW PAVEMENT MARKER <input type="checkbox"/> --CRYSTAL / CRYSTAL PAVEMENT MARKER	

### PAVEMENT MARKING LINES

TA - THERMOPLASTIC (4" WHITE, 90 MILS)	EDGE LINE
TD - THERMOPLASTIC (4" WHITE, 120 MILS)	4" X 2' MINISKIP
TE - THERMOPLASTIC (4" WHITE, 120 MILS)	SOLID LANE LINE
TH - THERMOPLASTIC (4" YELLOW, 120 MILS)	SINGLE CENTER LINE
TI - THERMOPLASTIC (4" YELLOW, 120 MILS)	DOUBLE CENTER LINE
AX - THERMOPLASTIC (8" YELLOW, 90 MILS)	EDGE LINE
TT - THERMOPLASTIC (8" YELLOW, 90 MILS)	DIAGONAL
CA - COLD APPLIED PLASTIC (4" WHITE, 90 MILS)	EDGE LINE
CH - COLD APPLIED PLASTIC (4" YELLOW, 120 MILS)	SINGLE CENTER LINE

### PAVEMENT MARKING SYMBOLS

UA - THERMOPLASTIC (LEFT TURN ARROW)

#### SPECIAL PAVEMENT MARKING NOTES

THE CONTRACTOR SHALL BE REQUIRED TO REMOVE ALL CONFLICTING PAVEMENT MARKINGS BY THE END OF THE WORKDAY.

THE CONTRACTOR SHALL INSTALL ALL PAVEMENT LINES AND SYMBOLS AS REQUIRED (SEE ROADWAY STANDARD DRAWINGS 1205.01 THRU 1205.12).

THE CONTRACTOR SHALL BE REQUIRED TO REPLACE ANY PAVEMENT MARKINGS, WHICH HAVE BEEN OBLITERATED BY CONSTRUCTION PROCEDURES, BY THE END OF THE WORKDAY.

THE CONTRACTOR SHALL BE REQUIRED TO COVER ALL CONFLICTING STATIONARY CONSTRUCTION SIGNING WHEN A LANE CLOSURE UTILIZING PORTABLE CONSTRUCTION SIGNS IS IN EFFECT. THE CONTRACTOR SHALL NOT HAVE AN OVERLAP IN THE SEQUENCE OF CONSTRUCTION SIGNING.

THE CONTRACTOR SHALL PLACE ALL FINAL PAVEMENT MARKING LINES AND SYMBOLS (THERMOPLASTIC ALKYD-MALEIC) USING THE EXTRUSION METHOD.

CHANGES TO PAVEMENT MARKINGS MAY AND SHALL BE MADE AT THE DIRECTION OF THE ENGINEER.

#### SPECIAL PAVEMENT MARKER NOTES

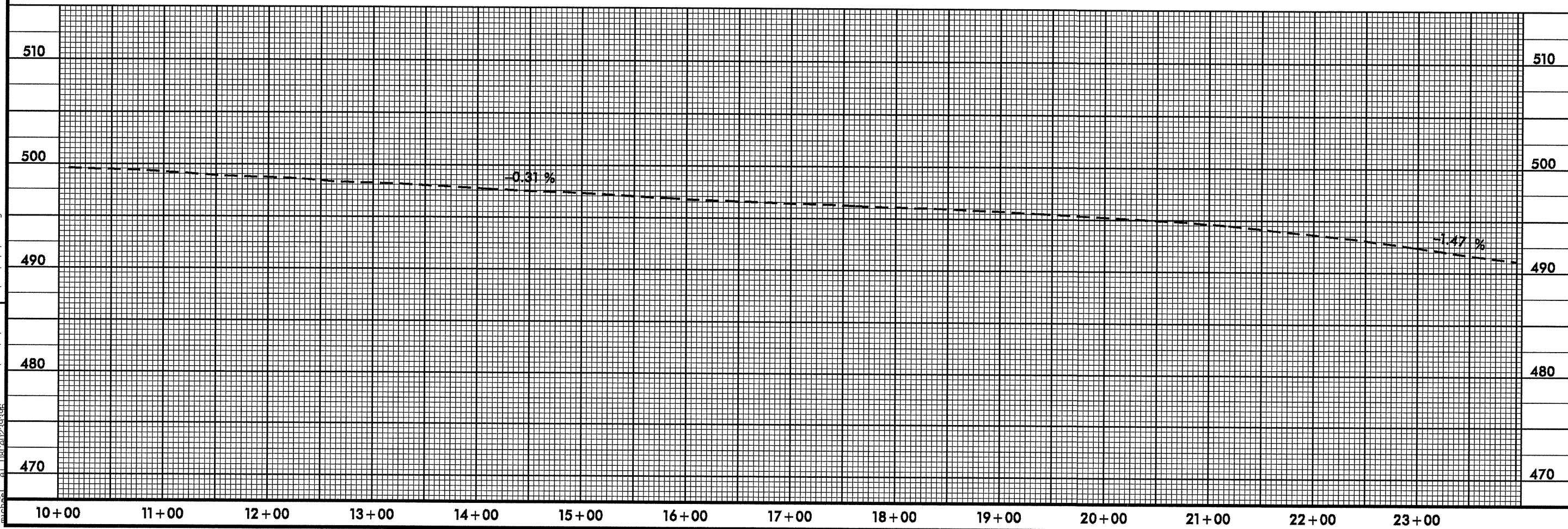
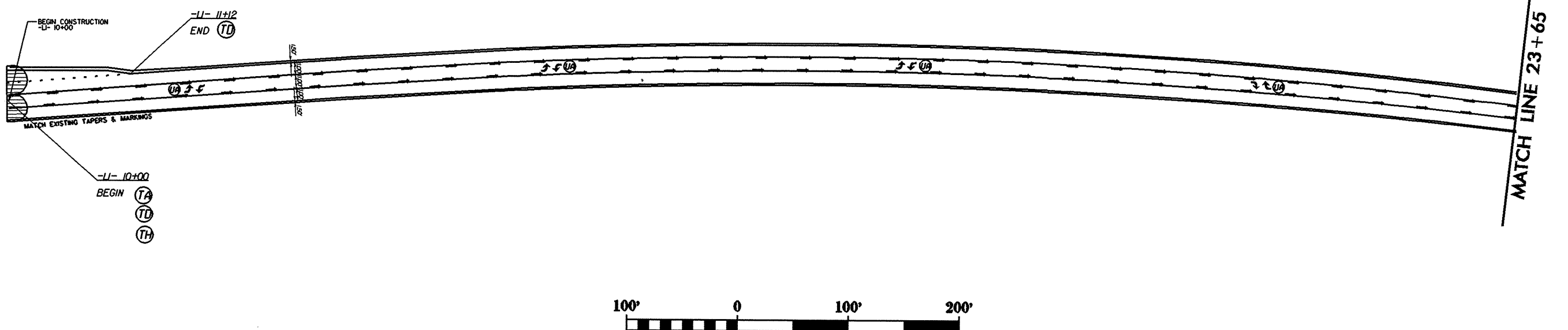
PAVEMENT MARKERS SHOULD NOT BE PLACED CLOSER THAN 2 INCHES TO A PAVEMENT CONSTRUCTION JOINT (AS FEASIBLE), EXCEPT WHEN PLACED BETWEEN DOUBLE YELLOW CENTER LINES, AND ALONG YELLOW SKIP LINES AND TWO-LANE, TWO-WAY ROADWAYS WHERE PASSING IS ALLOWED IN BOTH DIRECTIONS.

PAVEMENT MARKERS SHALL NOT BE PLACED DIRECTLY ON PAVEMENT MARKING LINES.

PAVEMENT MARKERS USED IN CONJUNCTION WITH DOUBLE YELLOW CENTER LINES SHALL BE PLACED MID-WAY BETWEEN THE LINES, PROVIDED WITH A GAP BETWEEN THE LINES AND THE MARKER TO REDUCE OVERSPRAYING THE MARKER DURING THE REPAINTING OPERATIONS.

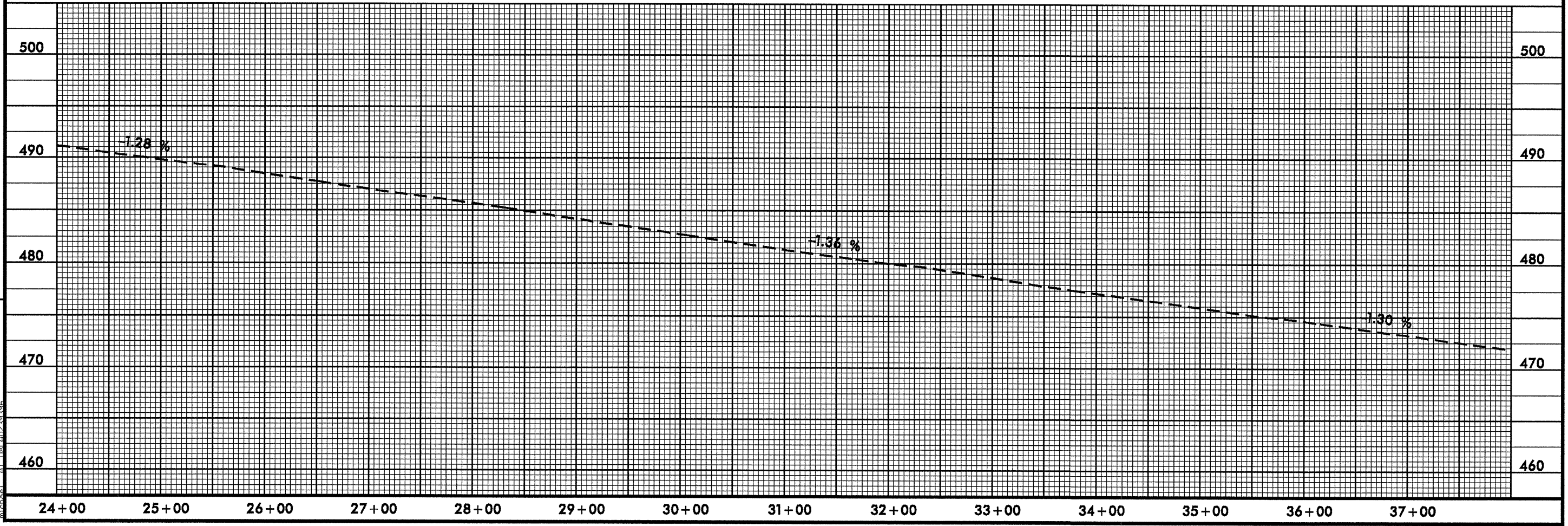
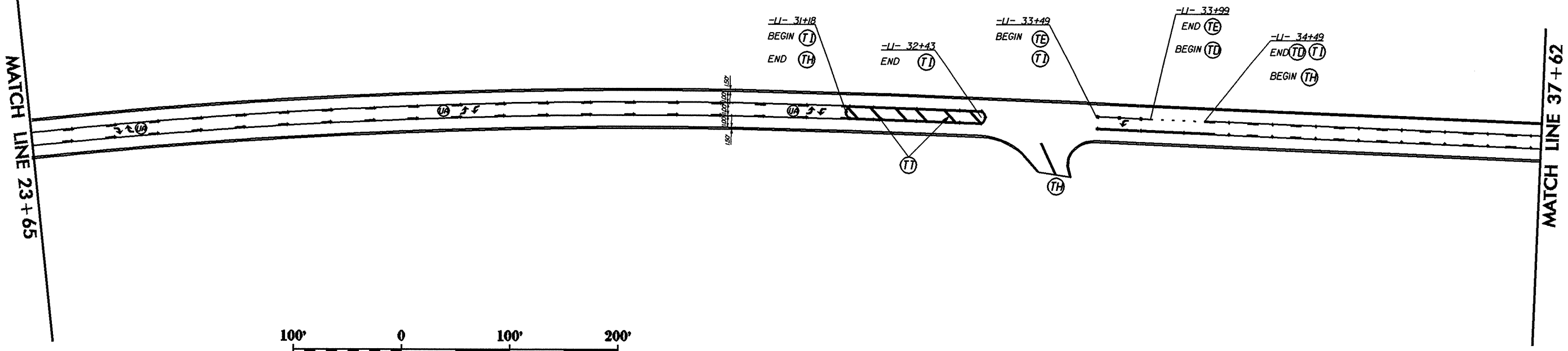
MARKERS ARE NOT REQUIRED ALONG MINI-SKIP LINES IN TAPERS.

CHANGES TO PAVEMENT MARKERS MAY AND SHALL BE MADE AT THE DIRECTION OF THE ENGINEER.



I:\-4PR-2008\_1151\01\_1151\11518\_vtdep10d\nc-78a\psh\pmp\nc78a\_psh\_pmp\_fm-2.dgn  
 8/17/09

REVISIONS

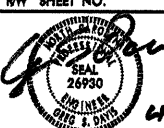


REVISIONS

8/17/99

I:\APR-2009\1138...78a\psh\pmp\pmp\_PM-3.dgn

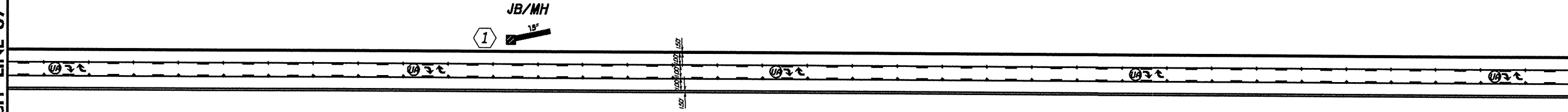


PROJECT REFERENCE NO.	SHEET NO.
R-5141	PM-4
RW SHEET NO.	
	
4-17-09	
DIVISION DESIGN / CONSTRUCT ENGINEER	

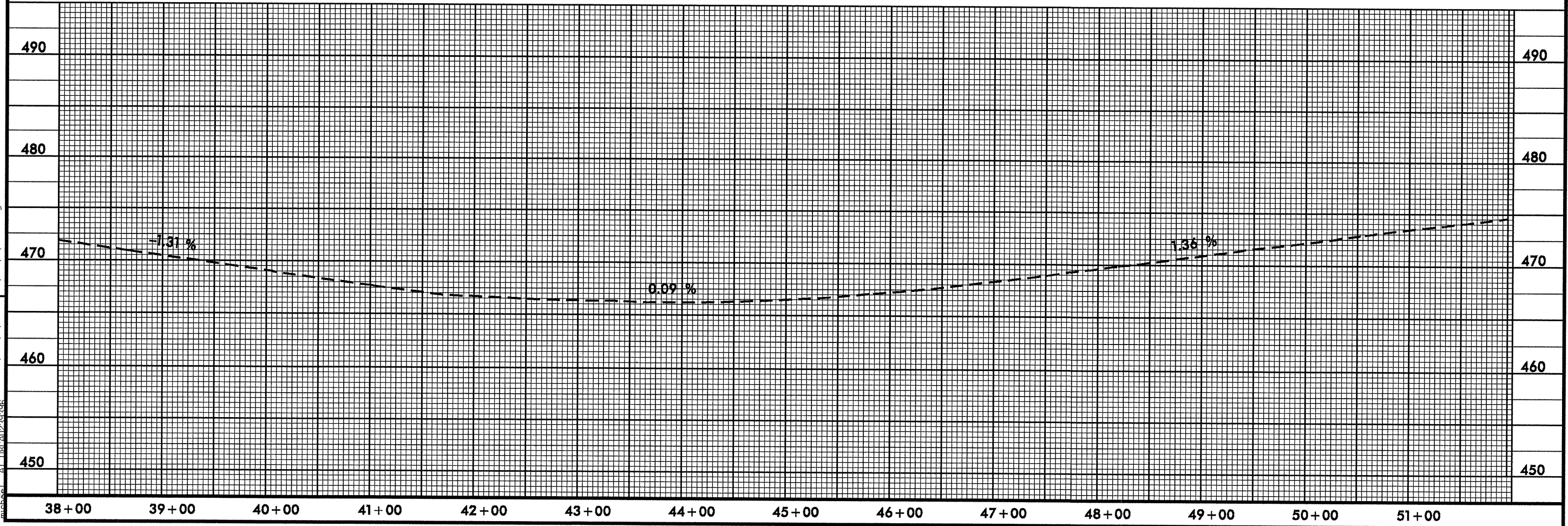
8/17/99

MATCH LINE 37+60

MATCH LINE 51+55



REVISIONS



I:\APP-2009 1139  
 U:\v\du\100\1\dep\app\nc.78a\psh\pmp\nc78 a.psh.pmp\_PM-4.dgn  
 mchsh

MATCH LINE 51+55

MATCH LINE 65+50



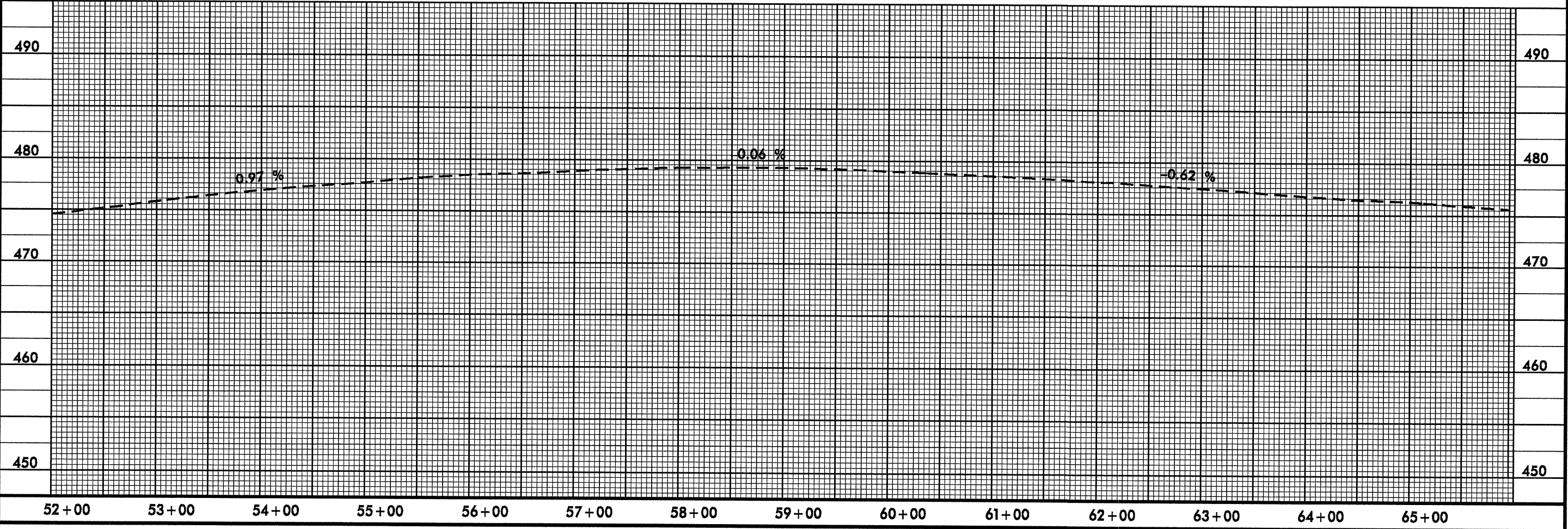
-LI- 60+14  
 END (TH) (TI)  
 BEGIN (TI) (TI)

-LI- 60+64  
 END (TL) (TI)  
 BEGIN (TE) (TI)

-LI- 61+14  
 END (TE) (TI)

-LI- 62+02  
 BEGIN (TI)

-LI- 63+27  
 END (TI) (TI)  
 BEGIN (TH) (TI)

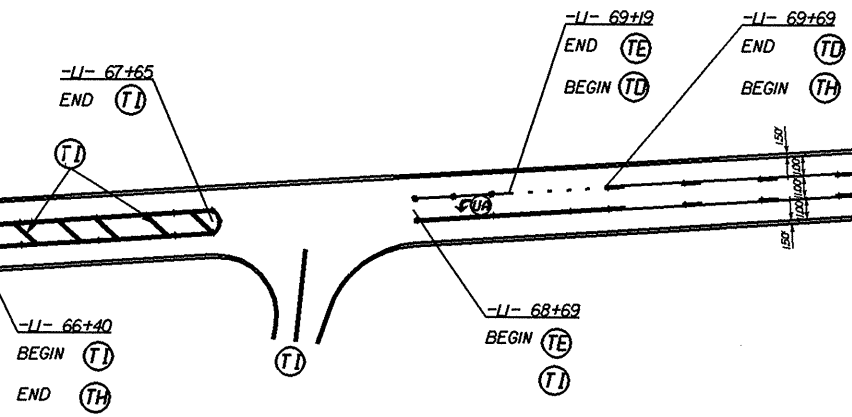


8/17/99  
 I:\APR\_2009\_1139...  
 I:\APR\_2009\_1139...

REVISIONS

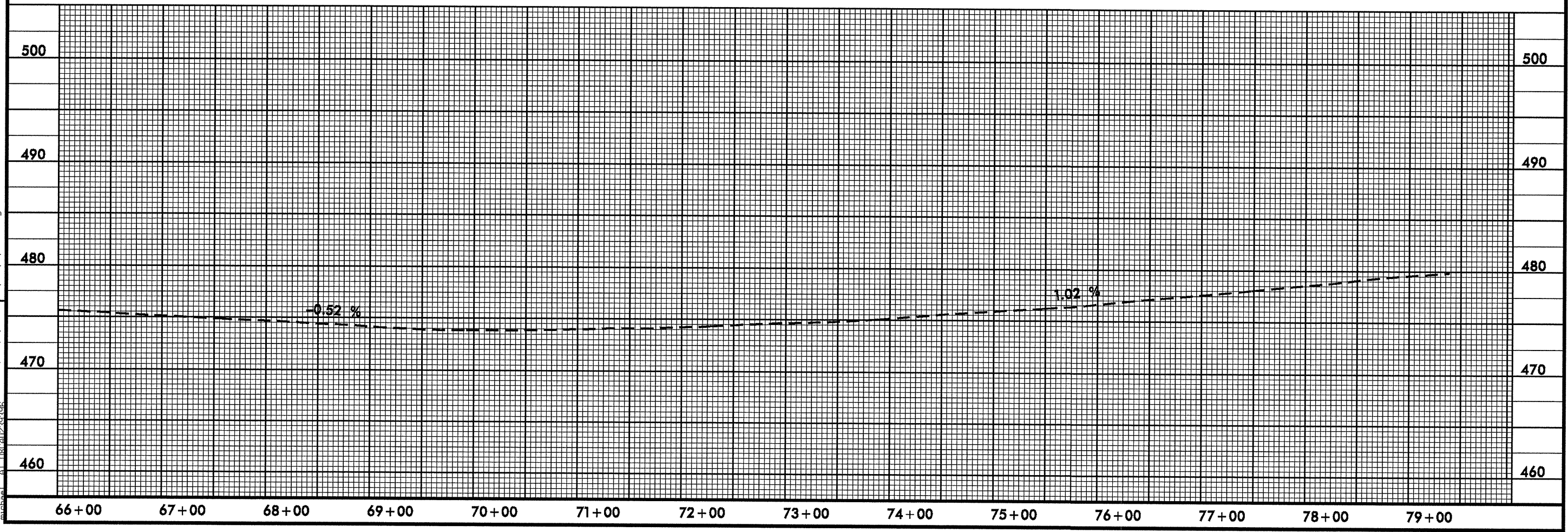
8/17/99

MATCH LINE 65+50



END CONSTRUCTION AS DIRECTED  
MATCH EXISTING TAPERS

REVISIONS



I:\APR-2009\_1138...  
 D:\Vch\Lee\...  
 78a\psh\temp\nc78a\_psh\_pmp\_PM-6.dgn  
 Michael A. ...



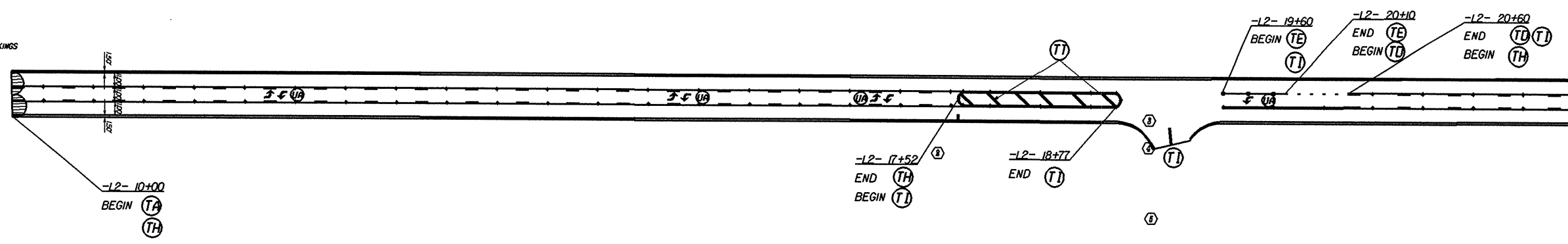
8/17/99

PROJECT REFERENCE NO. R-5141	SHEET NO. PM-7
RW SHEET NO.	
DIVISION DIRECTOR / CONSTRUCTION ENGINEER	

BEGIN CONSTRUCTION  
AS DIRECTED

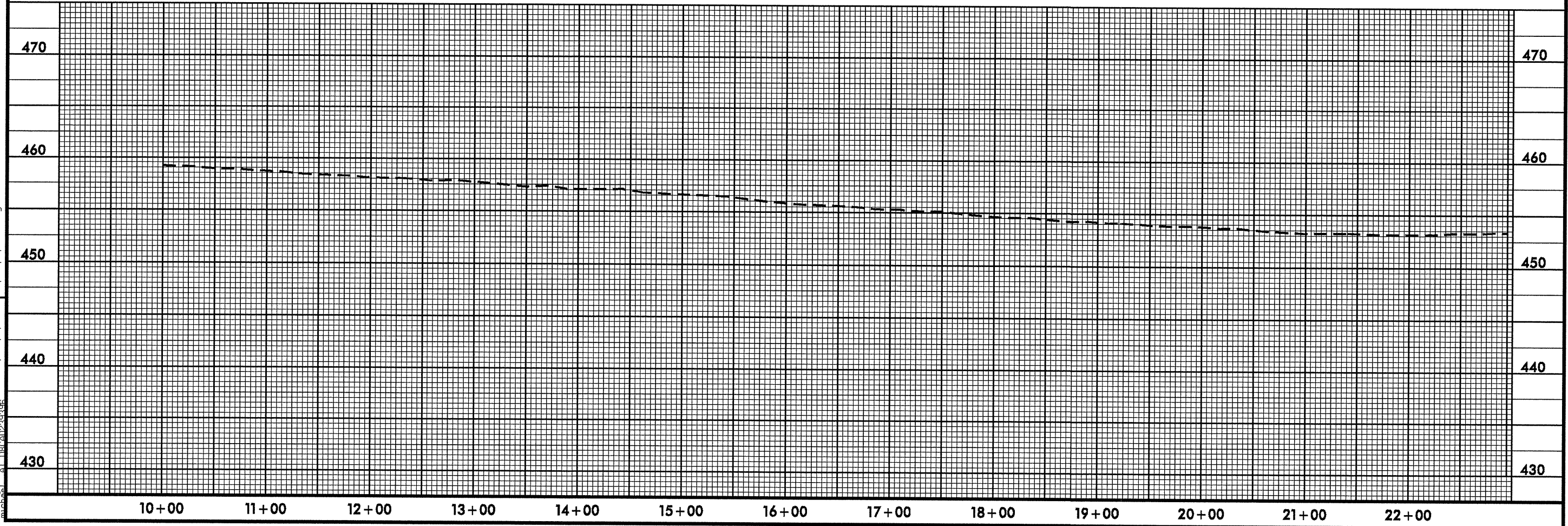
MATCH EXISTING TAPERS

MATCH EXISTING TAPERS AND MARKINGS



MATCH LINE 22+40

REVISIONS



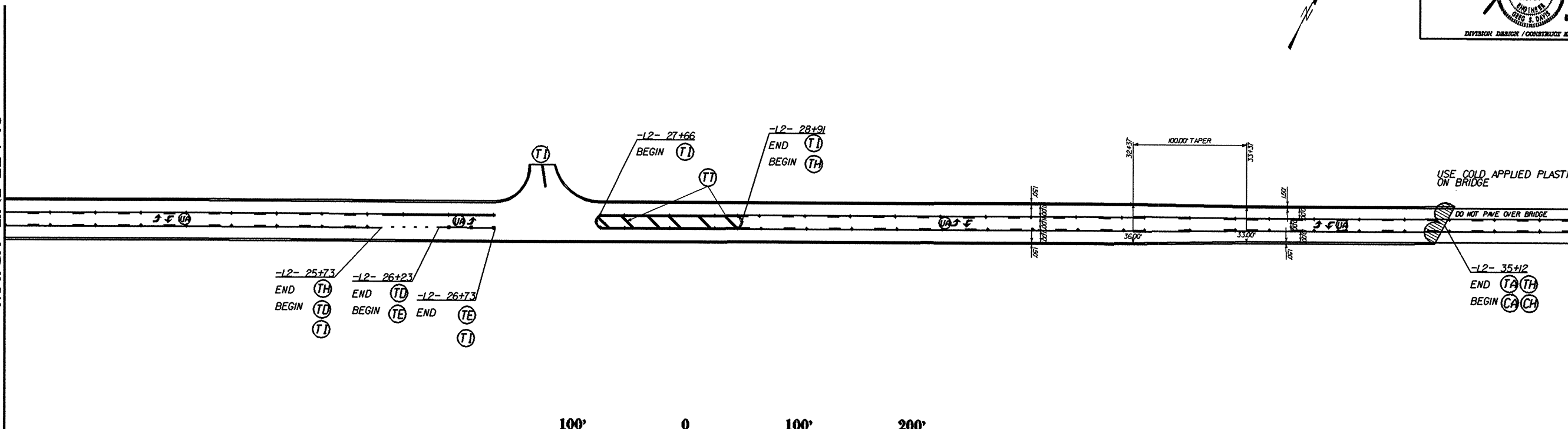
I:\ASB-2009 11-30  
D:\V\du\res\w\dep\mg\nc-78b\psh\pmp\nc78b.psh.pmp\nc78b.psh.pmp\_P1M-7.dgn

8/17/95

PROJECT REFERENCE NO. <b>R-5141</b>	SHEET NO. <b>PM-8</b>
RW SHEET NO.	
DIVISION DESIGN / CONSTRUCTION ENGINEER	



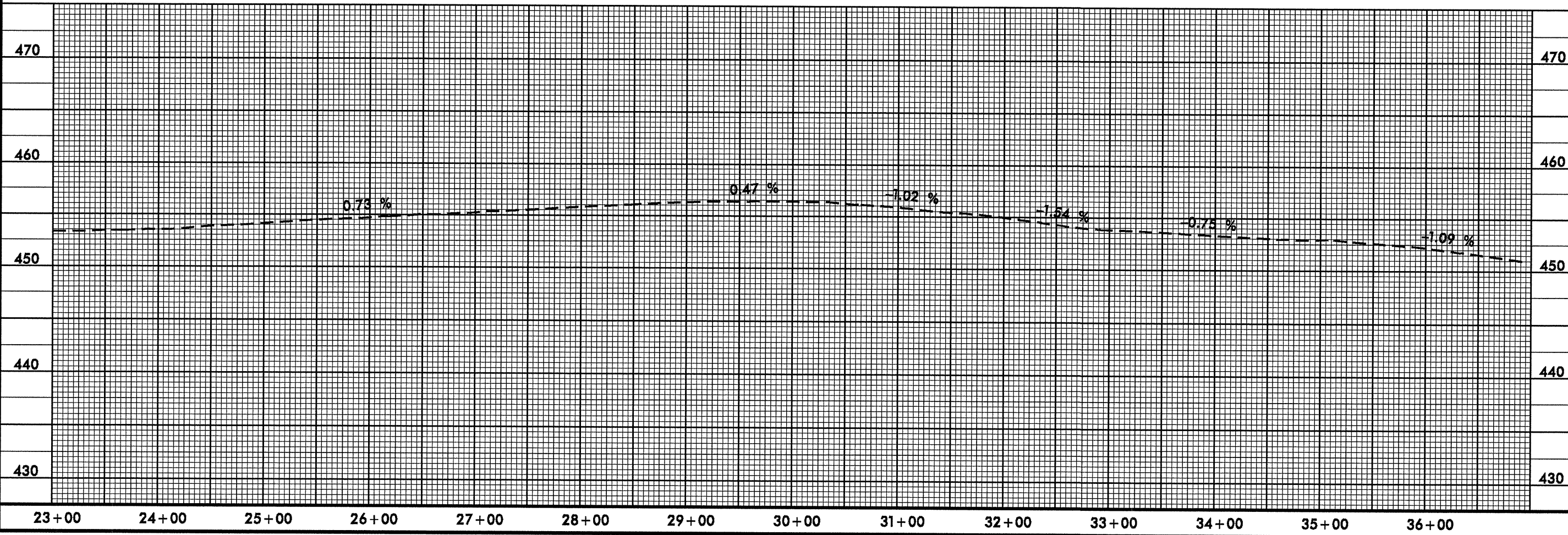
MATCH LINE 22+40



MATCH LINE 36+35



REVISIONS



I:\APR-2009 li:38  
 U:\psh\pmp\pmp\nc-78b\psh\pmp\nc78 b.psh.pmp\pm-8.dgn  
 4/17/09 10:52 AM

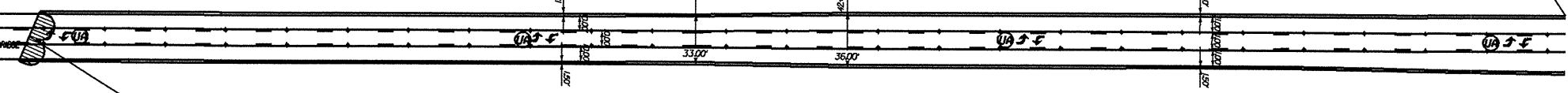


8/17/95

PROJECT REFERENCE NO.	SHEET NO.
R-5141	PM-9
RW SHEET NO.	
DIVISION DESIGN / CONSTRUCTION ENGINEER	

MATCH LINE 36+35

USE COLD APPLIED PLASTIC ON BRIDGE



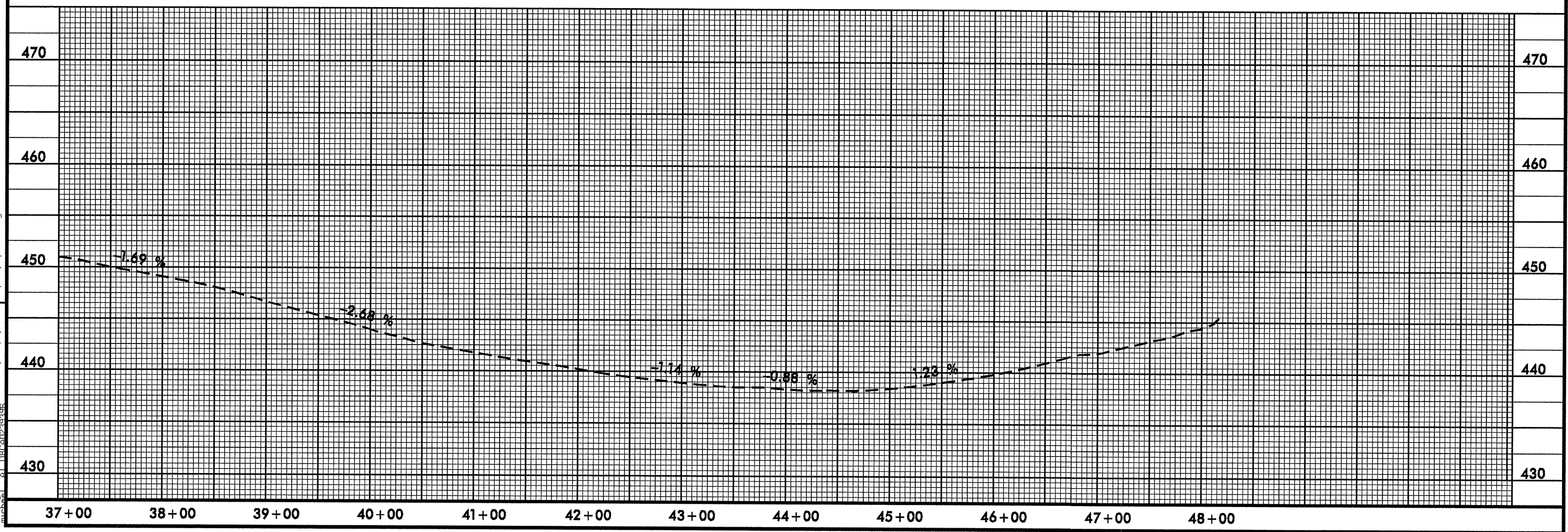
-12- 47+17  
END (TA) (TH) MATCH EXISTING TAPERS

-12- 37+07  
END (CA) (CH)  
BEGIN (TA) (TH)

MATCH EXISTING TAPERS AND MARKINGS



REVISIONS

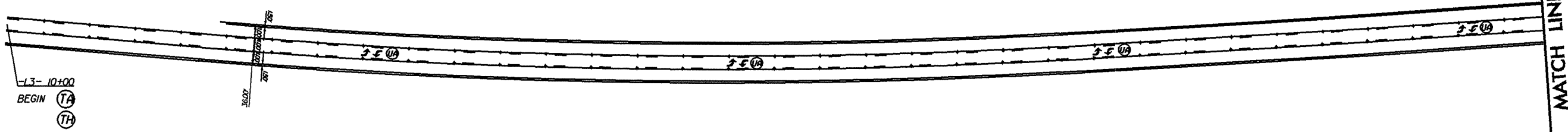


I:\ASB-2009\11-49\_wideopen\nc-78b\psh\pmp\nc78\_b\_psh\_pmp\_pm-9.dgn

8/17/99

PROJECT REFERENCE NO. R-5141	SHEET NO. PM-10
NW SHEET NO.	
DIVISION DESIGN / CONSTRUCTION ENGINEER	

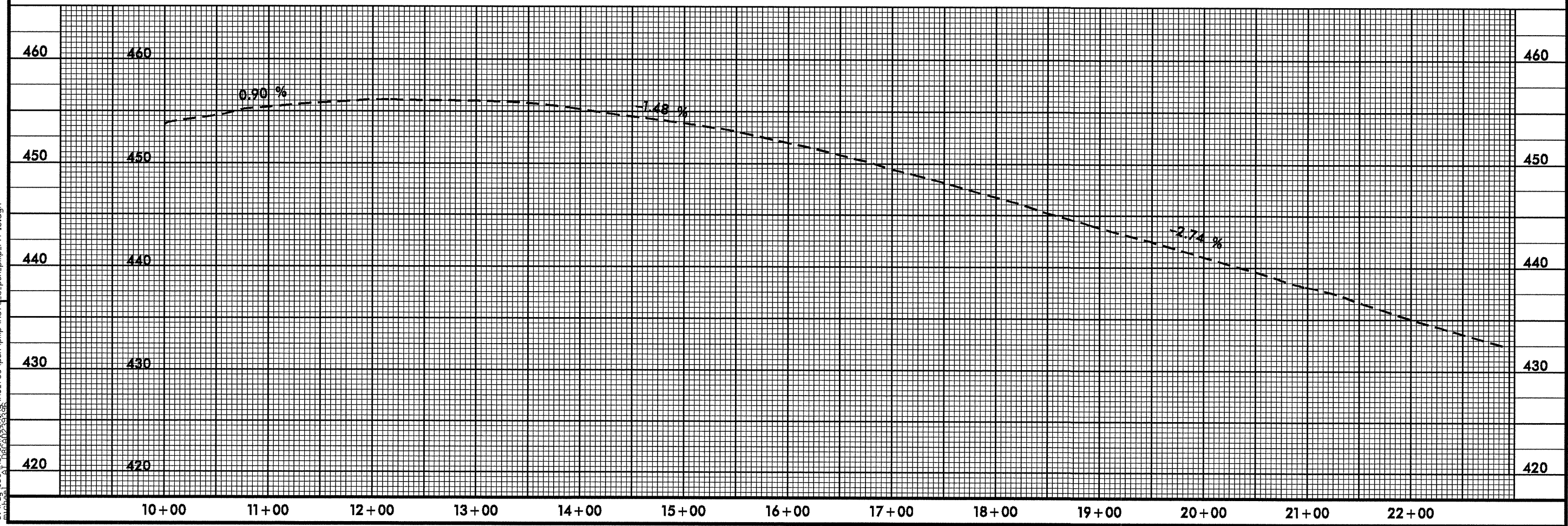
MATCH EXISTING TAPERS AND MARKINGS



-L3- 10+00  
 BEGIN (TA)  
 (TH)



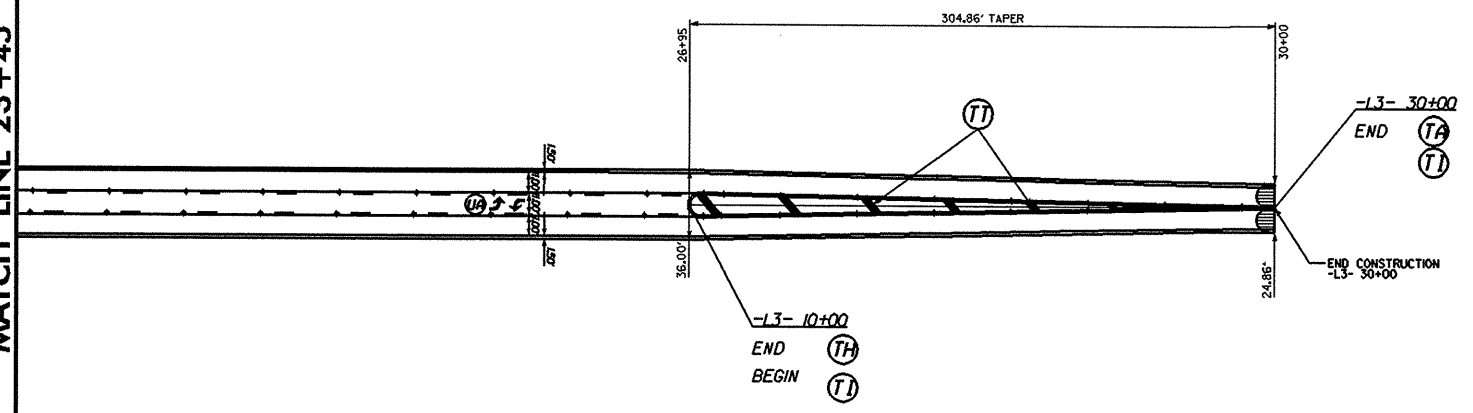
REVISIONS



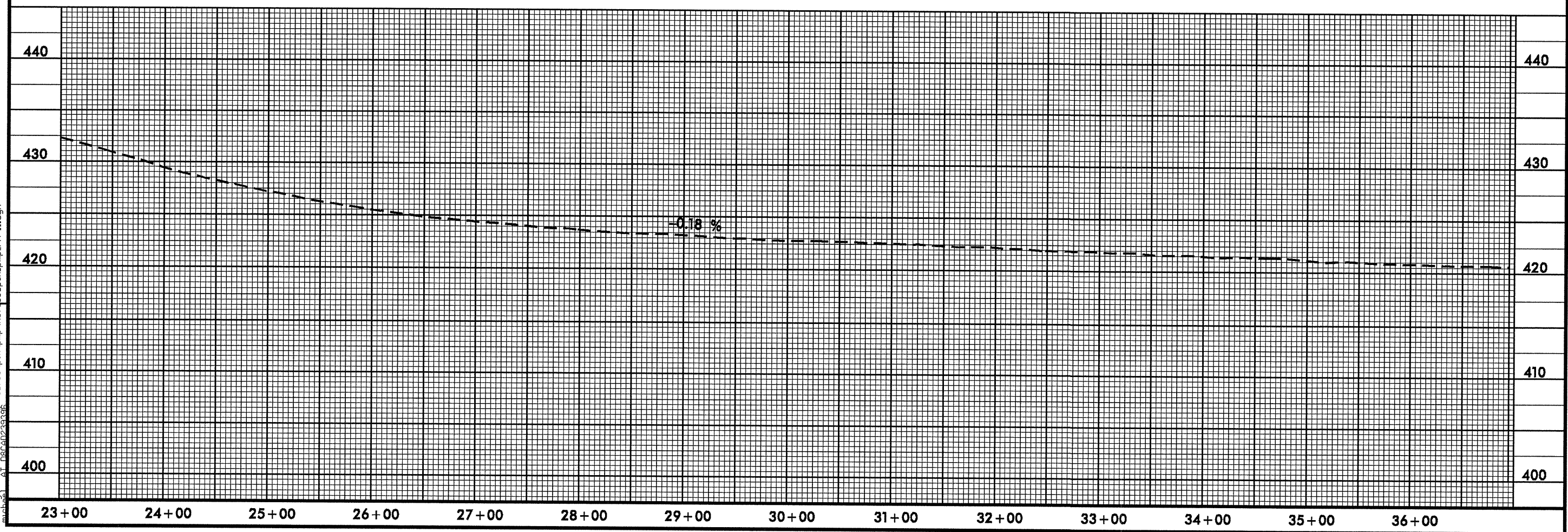
17-APR-2009 11:40  
 D:\p\cd\lee\p\cd\pmp\pmp\nc\_78c\psh\pmp\nc\_78c.psh.pmp\nc\_78c.psh.pmp\_P10.dgn



MATCH LINE 23+45



REVISIONS



8/17/99  
I:\APR\_2009\_11.dwg  
Project: \psh\pmp\nc75\nc75\psh\pmp\nc75\nc75\psh\pmp\PM-11.dgn