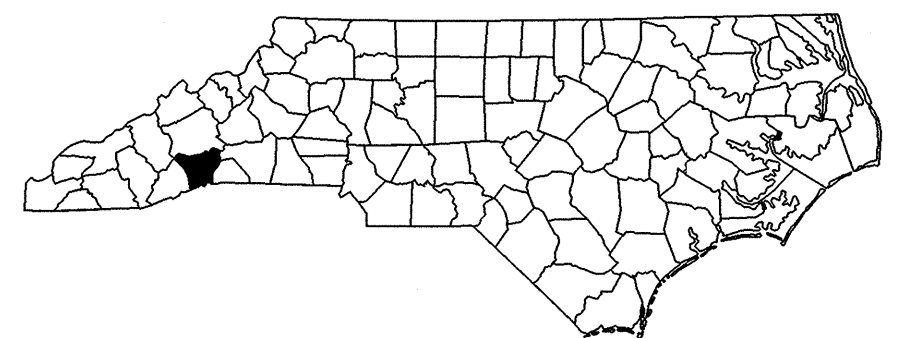
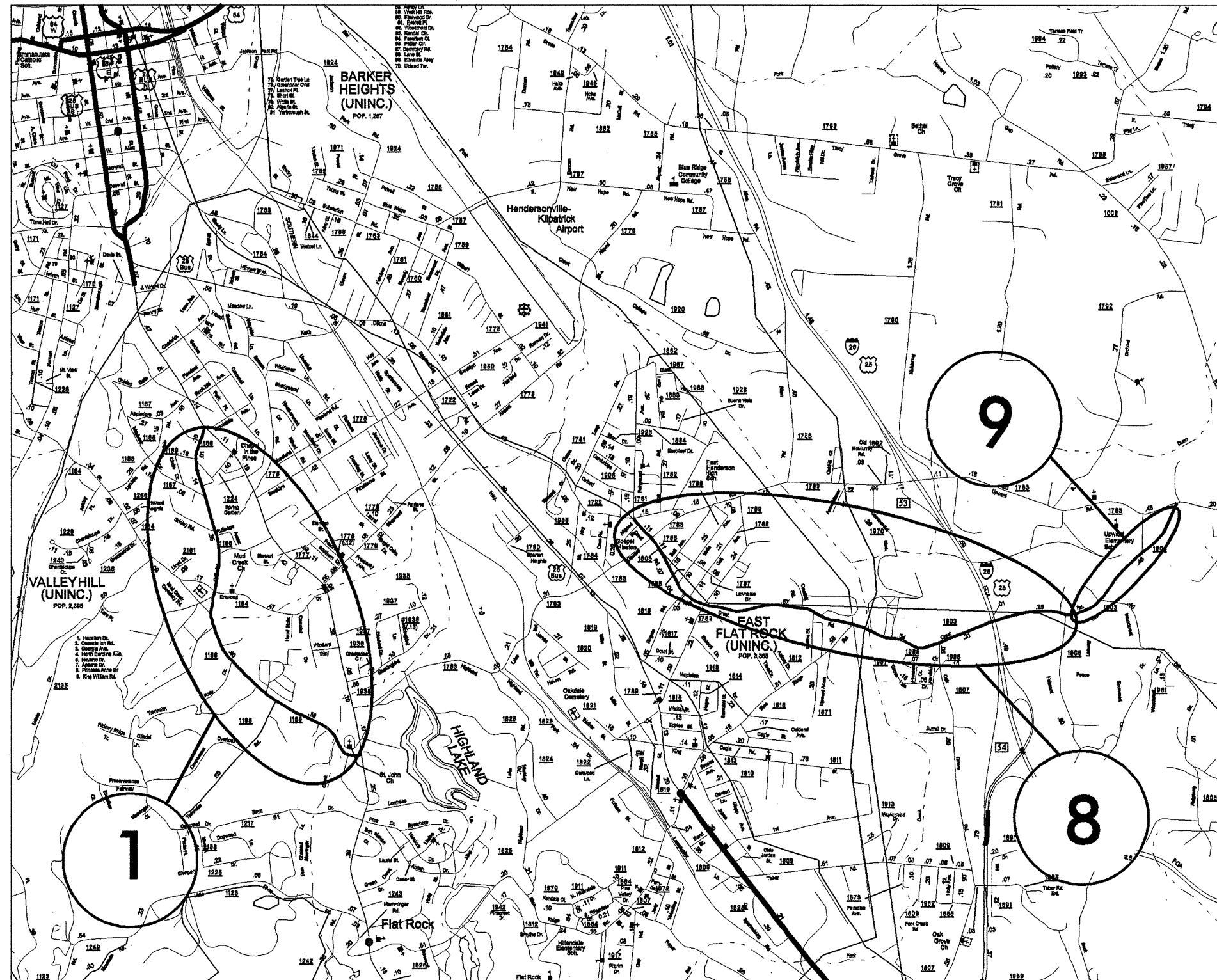


050137

# 2009 CONTRACT RESURFACING HENDERSON COUNTY

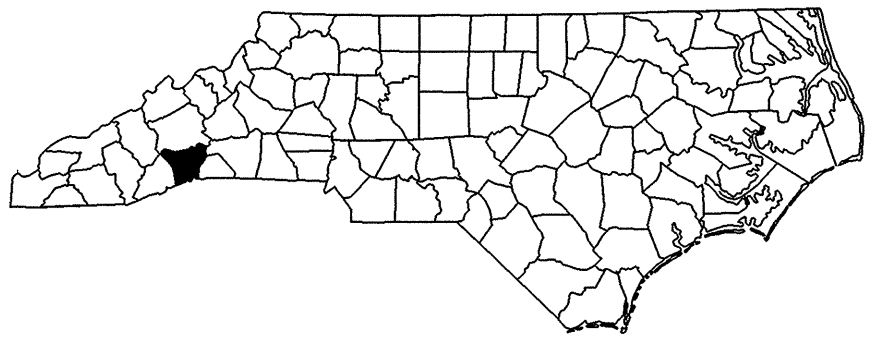
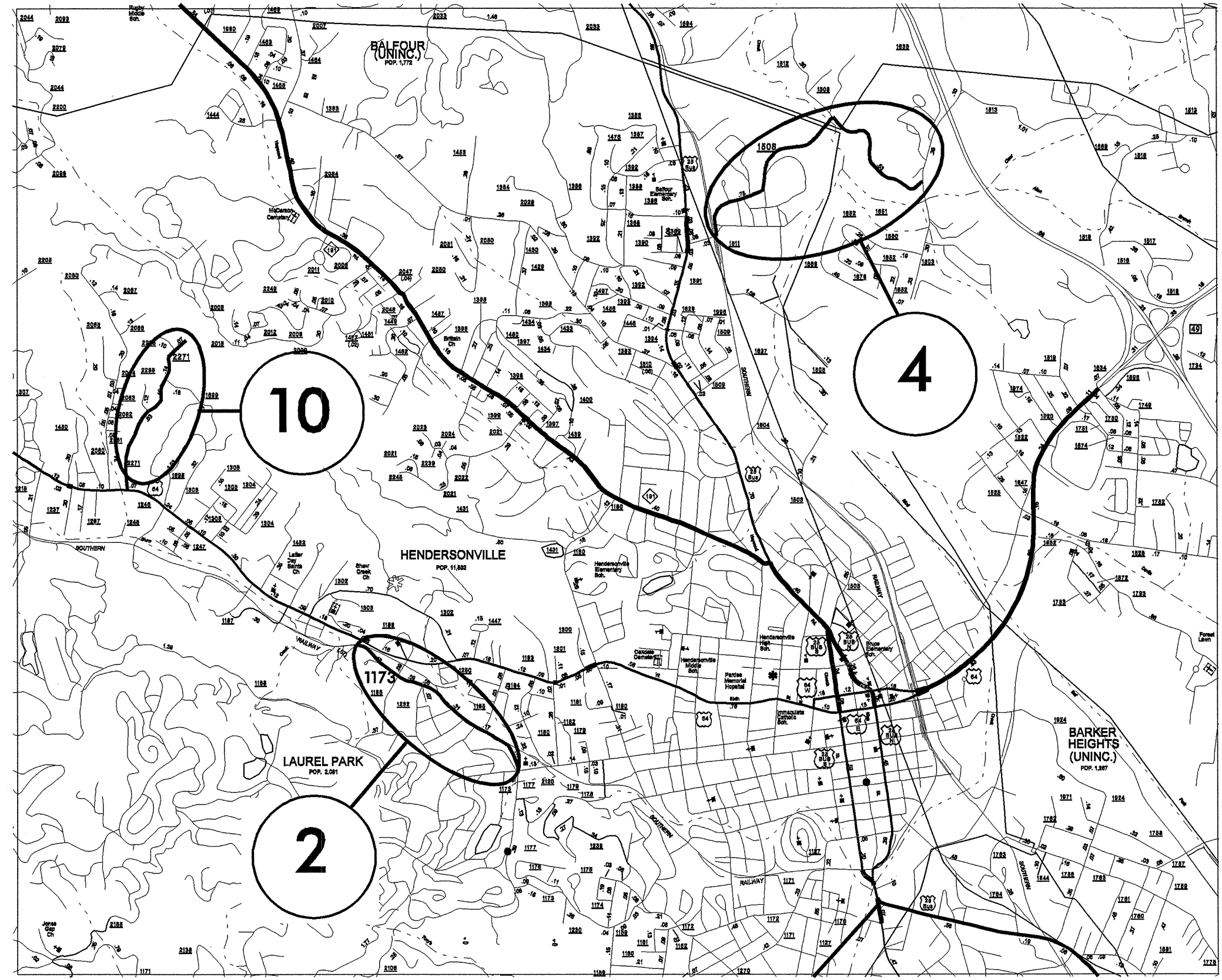
PROJECT REFERENCE NO.	SHEET NO.	
14CR.20451.8	1 OF 10	
STATE PROJECT	F.A. PROJECT NO.	DESCRIPTION
14CR.20451.8		
14CR.20751.7		
14CR.20851.7		



050137

# 2009 CONTRACT RESURFACING HENDERSON COUNTY

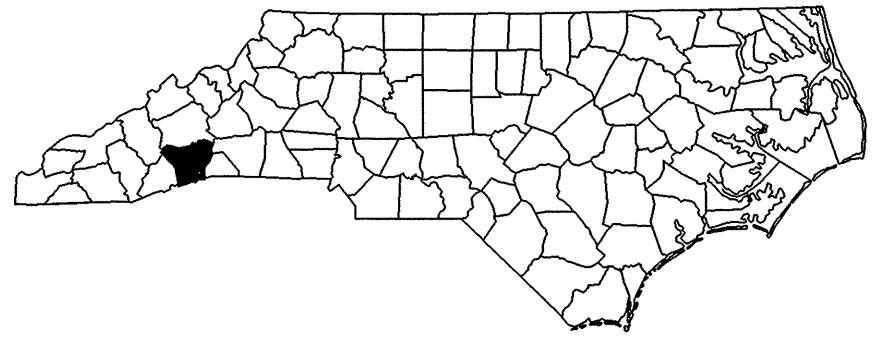
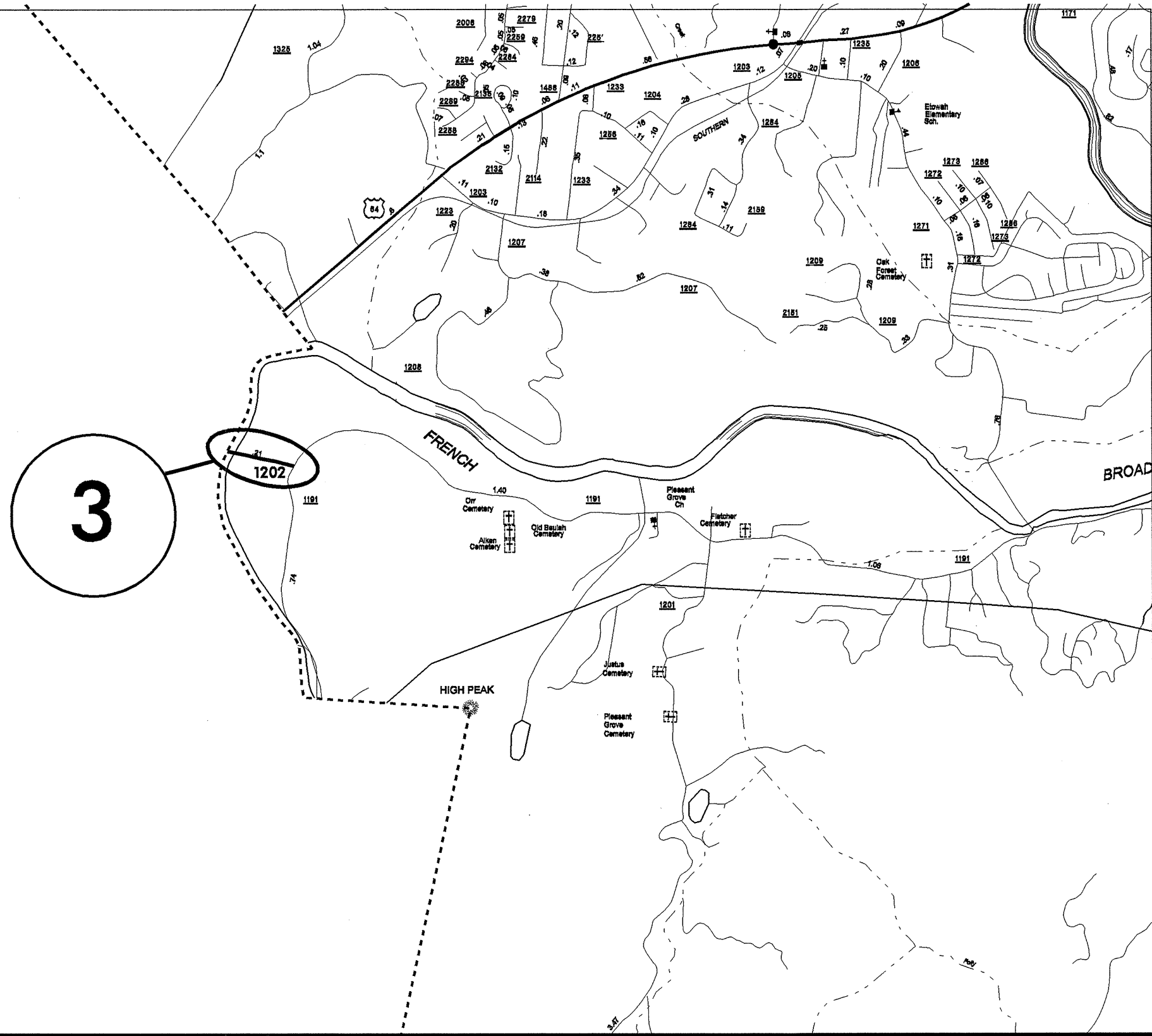
PROJECT REFERENCE NO.		SHEET NO.
14CR.20451.6		2 OF 10
STATE PROJECT	F.A. PROJECT NO.	DESCRIPTION
14CR.20451.6		
14CR.20751.7		
14CR.20851.7		



050197

# 2009 CONTRACT RESURFACING HENDERSON COUNTY

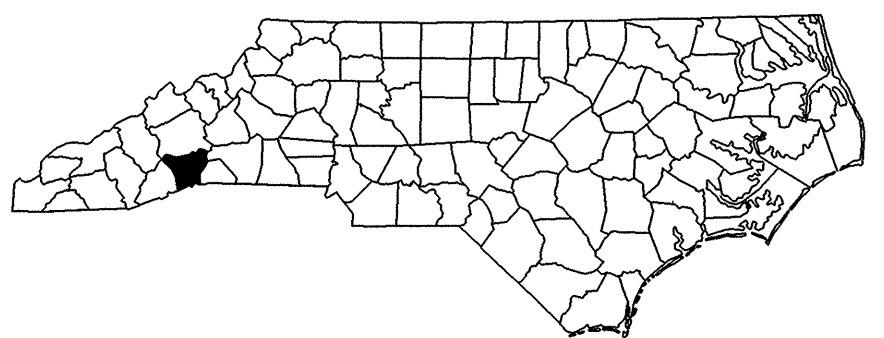
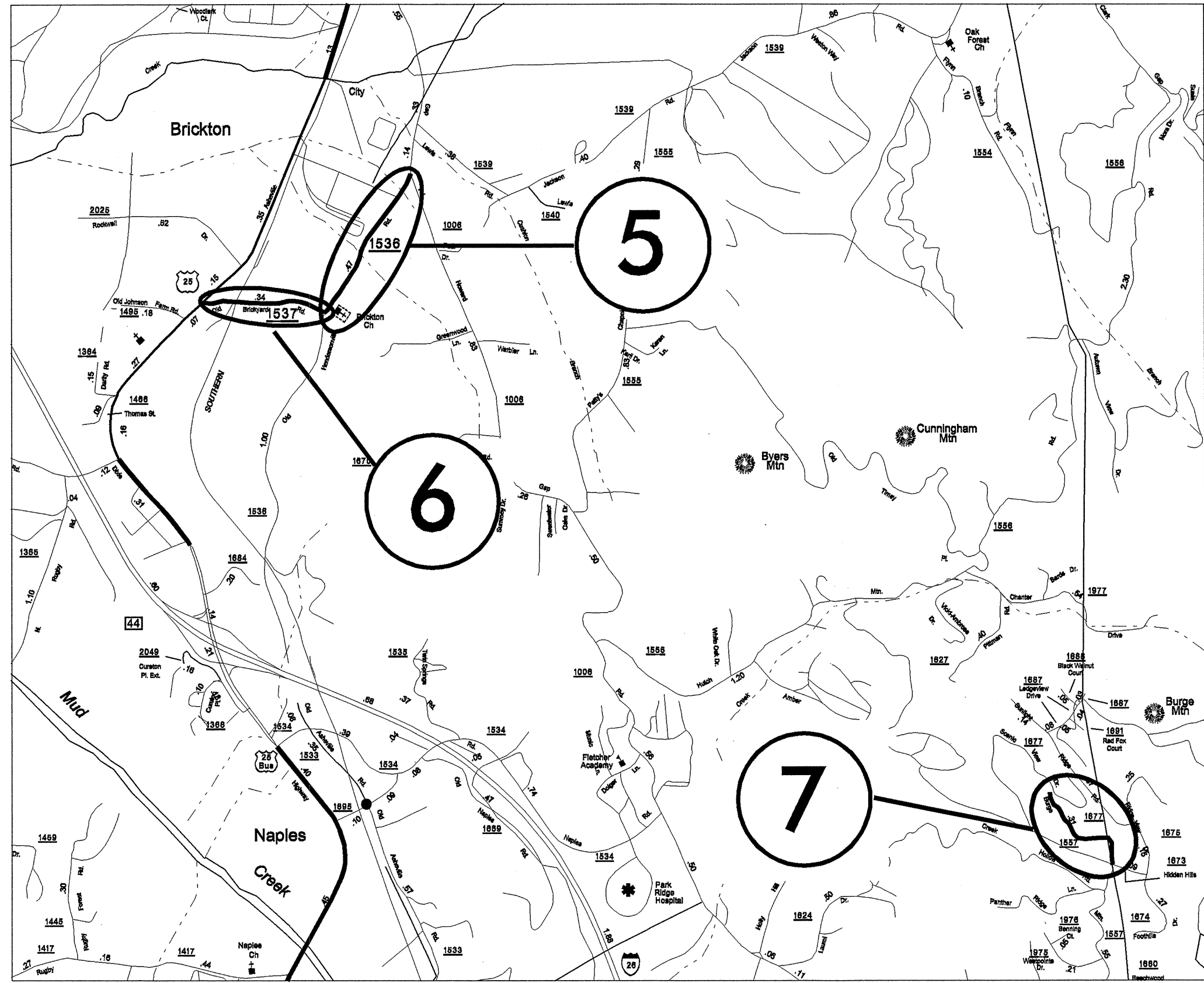
PROJECT REFERENCE NO.		SHEET NO.
14CR.20451.8		3 OF 10
STATE PROJECT	F.A. PROJECT NO.	DESCRIPTION
14CR.20451.8		
14CR.20751.7		
14CR.20851.7		



050137

# 2009 CONTRACT RESURFACING HENDERSON COUNTY

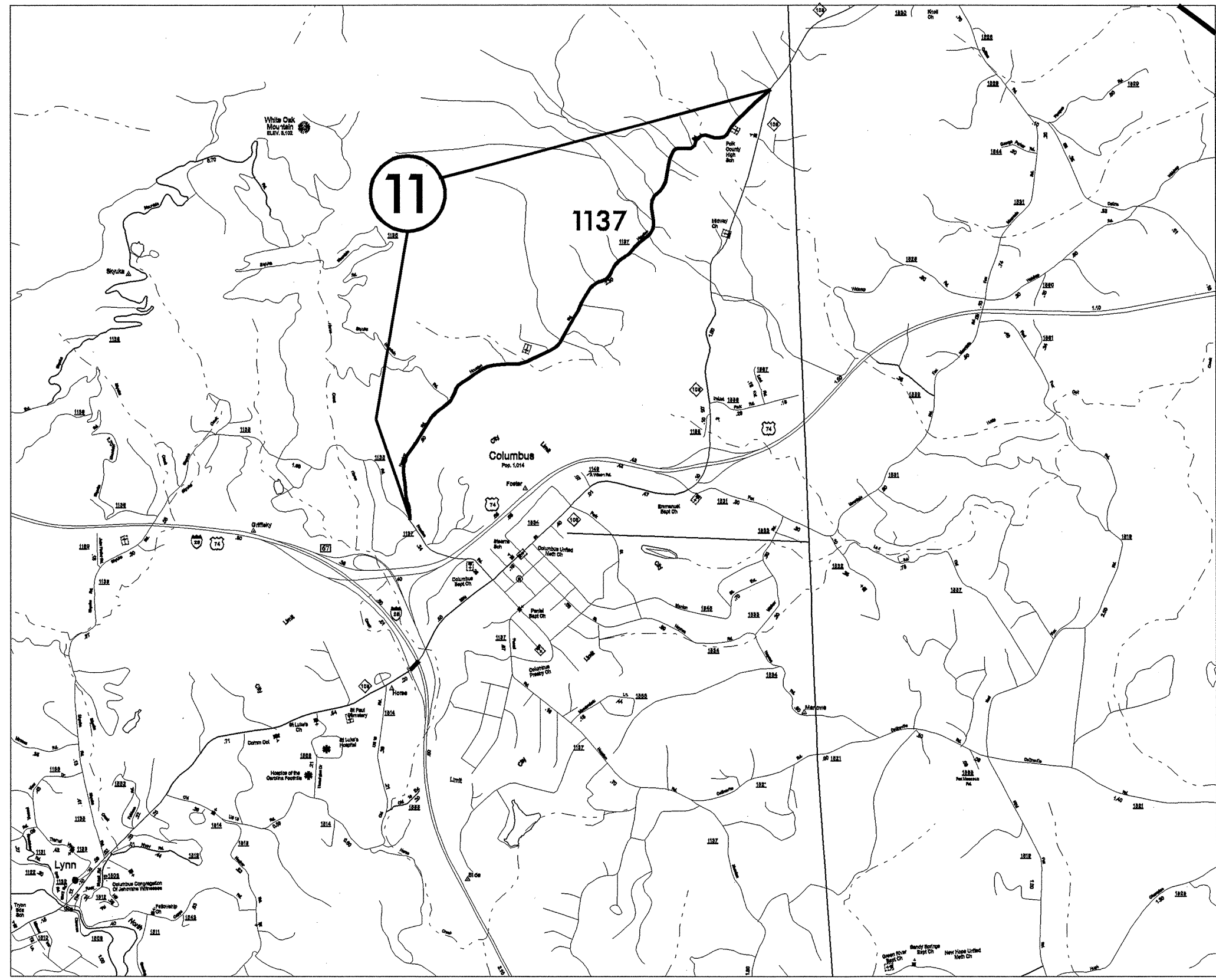
PROJECT REFERENCE NO.		SHEET NO.
14CR.20451.8		4 OF 10
STATE PROJECT	F.A. PROJECT NO.	DESCRIPTION
14CR.20451.8		
14CR.20751.7		
14CR.20881.7		



05/01/07

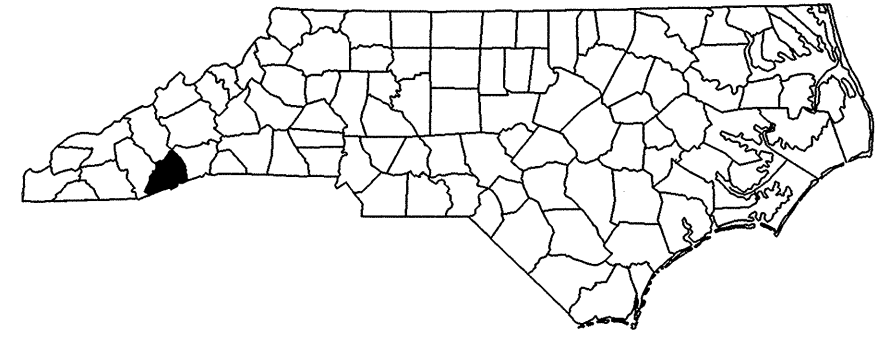
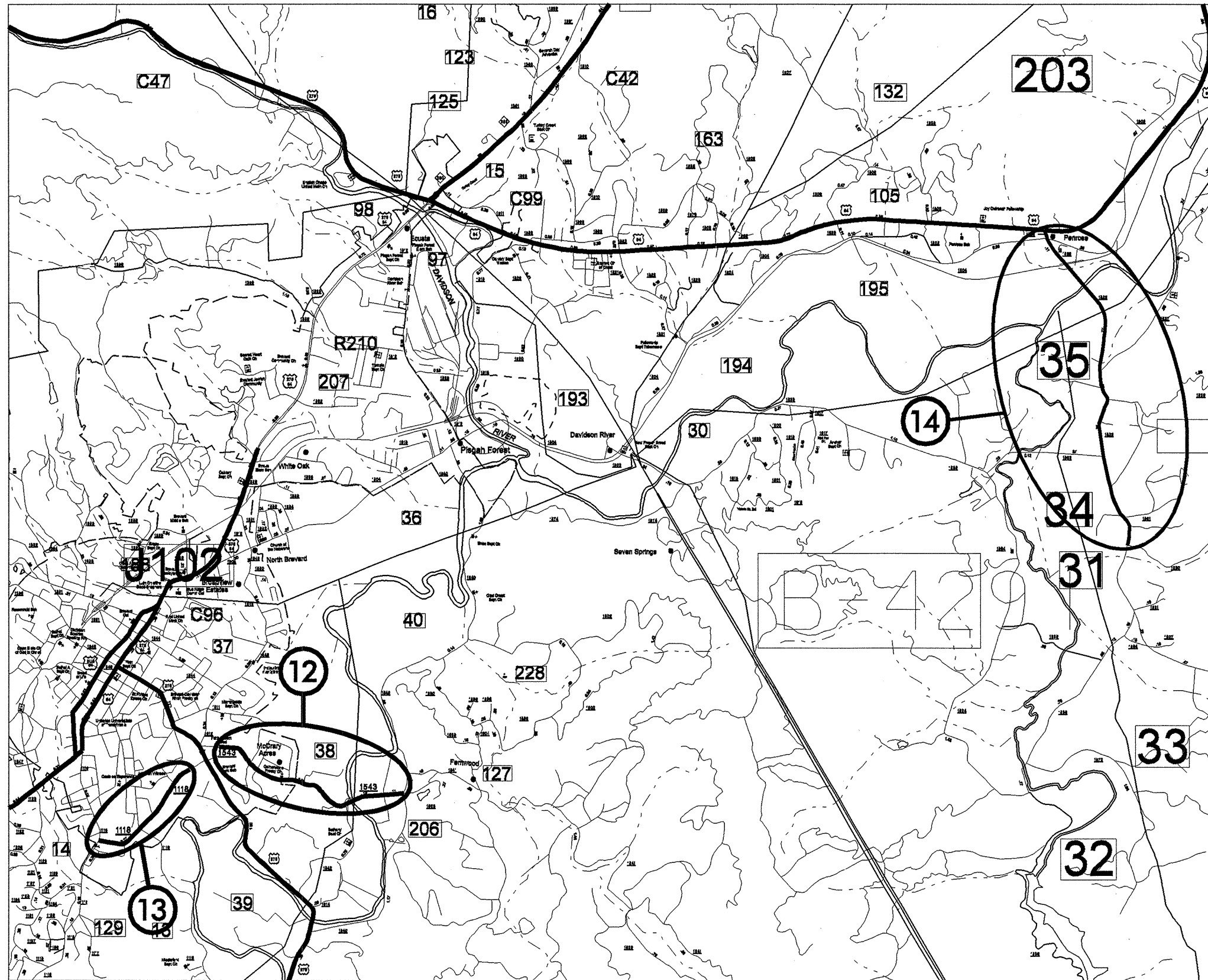
# 2009 CONTRACT RESURFACING POLK COUNTY

PROJECT REFERENCE NO.		SHEET NO.
14CR.20451.8		5 OF 10
STATE PROJECT	P.A. PROJECT NO.	DESCRIPTION
14CR.20451.8		
14CR.20751.7		
14CR.20851.7		



# 2009 CONTRACT RESURFACING TRANSYLVANIA COUNTY

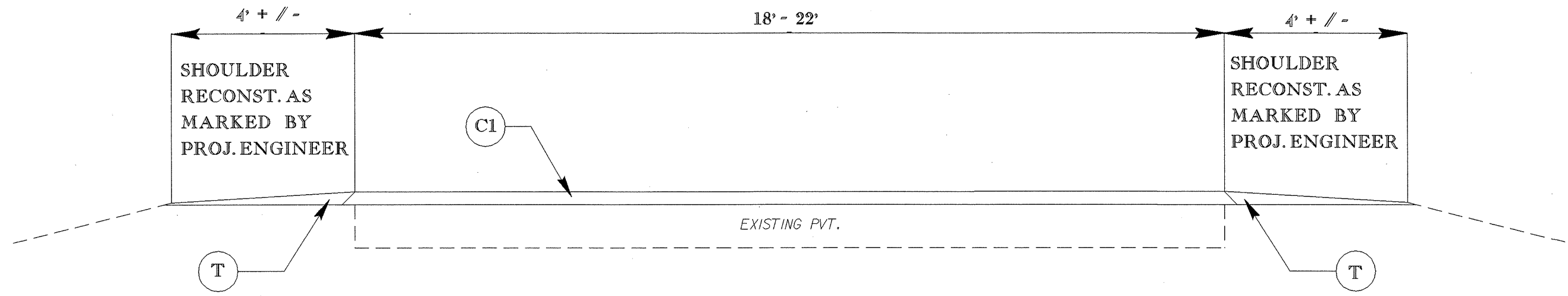
PROJECT REFERENCE NO.		SHEET NO.
14CR.20481.8		6 OF 10
STATE PROJECT	F.A. PROJECT NO.	DESCRIPTION
14CR.20481.8		
14CR.20751.7		
14CR.20881.7		



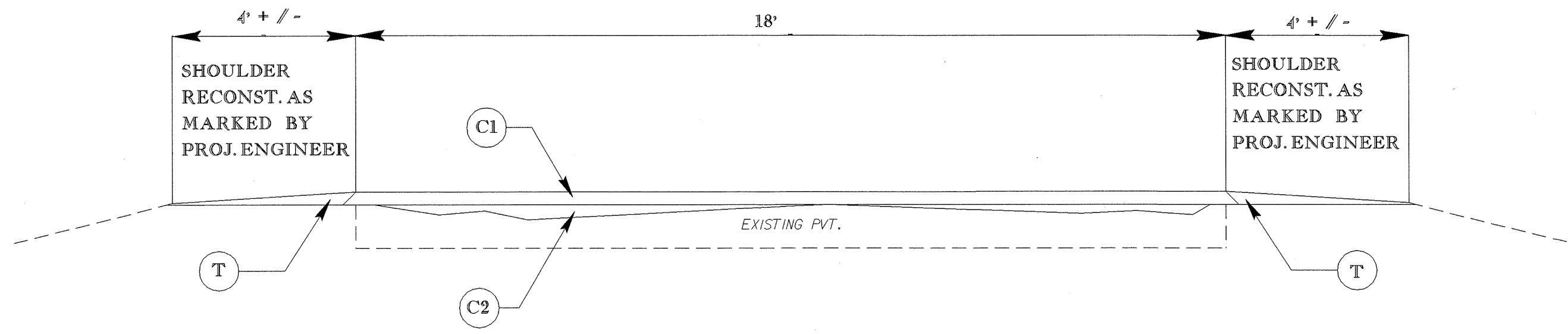
0510191

PROJECT REFERENCE NO.		SHEET NO.
14CR.20451.8		7 OF 10
STATE PROJECT	F.A. PROJECT NO.	DESCRIPTION
14CR.20451.8		
14CR.20751.7		
14CR.20881.7		

# TYPICAL 1



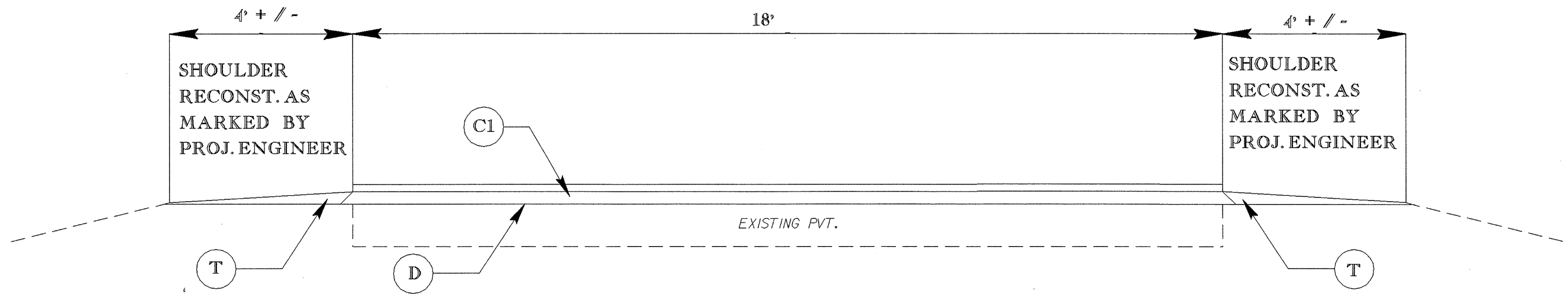
# TYPICAL 2



051019T

PROJECT REFERENCE NO.		SHEET NO.
14CR.20451.8		8 OF 10
STATE PROJECT	F.A. PROJECT NO.	DESCRIPTION
14CR.20451.8		
14CR.20751.7		
14CR.20851.7		

# TYPICAL 3





050197

PROJECT REFERENCE NO.		SHEET NO.
14CR20451.8		9 OF 10
STATE PROJECT	F.A. PROJECT NO.	DESCRIPTION
14CR20451.8		
14CR20751.7		
14CR20851.7		

ITEM NO	DESCRIPTION
C1	ASPHALT CONCRETE SURFACE COURSE, TYPE S9.5B, AT AN AVERAGE RATE OF 168 LBS. PER SQ. YD. (1 1/2")
C2	PROPOSED VARIABLE DEPTH ASPHALT CONCRETE SURFACE COURSE, TYPE SF9.5A, AT AN AVERAGE RATE OF 70 LBS. PER SQ. YD. (LEVELING COURSE)
D	ASPHALT CONCRETE INTERMEDIATE COURSE, TYPE I19.0B, AT AN AVERAGE RATE OF 285 LBS. PER SQ. YD. (2 1/2")
T	SHOULDER CONSTRUCTION WITH ABCM - SEE SPECIAL PROVISIONS

PROJECT NO.	SHEET NO.	TOTAL NO.
14CR.20451.8, 14CR.20751.7, 14CR.20881.7	10	10

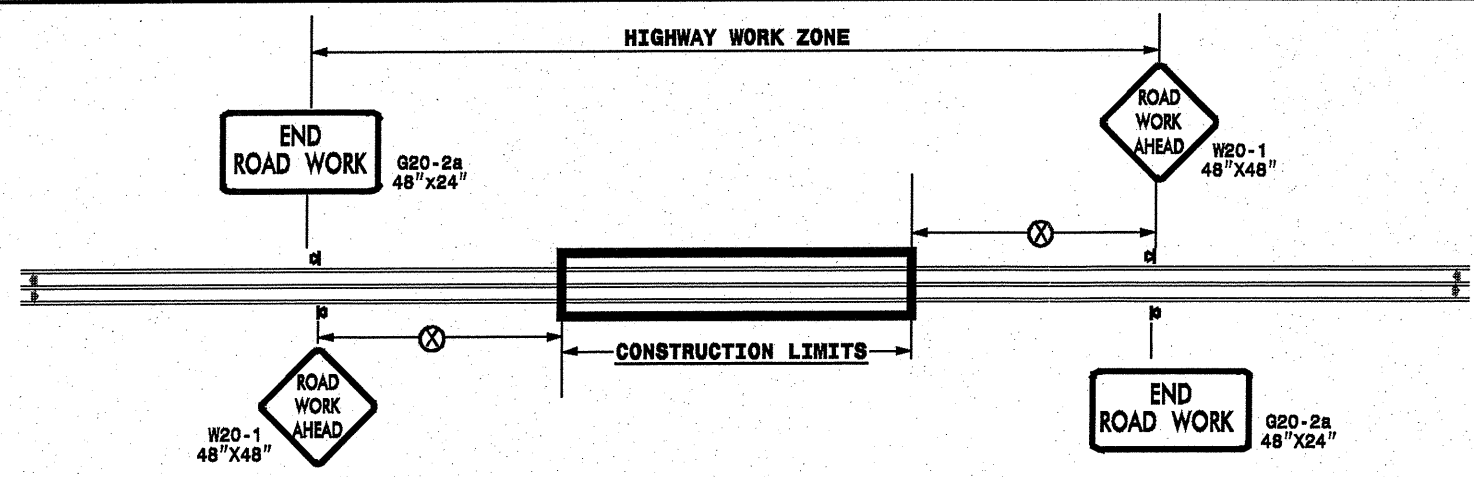
## SUMMARY OF QUANTITIES

PROJECT NO	COUNTY	MAP NO	ROUTE	DESCRIPTION	TYP NO	FINAL SURFACE TESTING REQUIRED	LENGTH MI	WIDTH FT	SHOULDER RECONSTRUCTION SMI	INTER-MEDIATE COURSE, I19.0B TONS	SURFACE COURSE, S9.5B TONS	SURFACE COURSE, SF9.5A (Leveling) TONS	PG 64-22 PLANT MIX TONS	ADJ. OF MANHOLES EA	ADJ. OF METER OR VALVE BOX EA
14CR.20451.8	Henderson	1	SR1166	FROM NC225 TO NC225	3	No	1.53	18	3.06	2,417	1,425		199		
		2	SR1173	FROM US64 TO SR1180	2	No	0.79	18	1.58		654	273	57	1	5
		3	SR1202	FROM SR1191 TO TRANSYLVANIA CO.	1	No	0.21	20	0.42		217		13		
		4	SR1508	FROM SR1511 TO SR1503	1	No	1.30	20	2.60		1,345		81		
		5	SR1536	FROM SR1537 TO SR1006	1	No	0.47	20	0.94		486		29		
		6	SR1537	FROM US25 TO SR1536	1	No	0.35	20	0.70		362		22		
		7	SR1557	FROM SR1673 TO DEAD END	1	No	0.31	18	0.62		289		17		
		8	SR1803	FROM SR1722 TO SR1804	1	No	1.94	18	3.88		1,807		108		
		9	SR1804	FROM 1803 TO SR1783	1	No	0.46	18	0.92		428		26		
		10	SR2271	FROM US64 TO DEAD END	1	No	0.68	18	1.36		633		38		
<b>TOTAL FOR PROJ NO. 14CR.20451.8</b>							<b>8.04</b>		<b>16.08</b>	<b>2,417</b>	<b>7,646</b>	<b>273</b>	<b>590</b>	<b>1</b>	<b>5</b>
14CR.20751.7	Polk	11	SR1137	FROM NC108 TO SR1135	1	No	2.87	18	5.74		2,673		160		
<b>TOTAL FOR PROJ NO. 14CR.20751.7</b>							<b>2.87</b>		<b>5.74</b>		<b>2,673</b>		<b>160</b>		
14CR.20881.7	Transylvania	12	SR1543	FROM SR1540 TO END OF SYSTEM	1	No	1.22	20	2.44		1,263		76		
		13	SR1118	FROM SR1116 TO PVMT CHNG 0.71 MILE EAST	1	No	0.71	20	1.42		735		44		
		14	SR1528	FROM US64 TO SR1530	1	No	2.00	22	4.00		2,277		137		
<b>TOTAL FOR PROJ NO. 14CR.20881.7</b>							<b>3.93</b>		<b>7.86</b>		<b>4,275</b>		<b>257</b>		
<b>GRAND TOTAL</b>							<b>14.84</b>		<b>29.68</b>	<b>2,417</b>	<b>14,594</b>	<b>273</b>	<b>1,007</b>	<b>1</b>	<b>5</b>

## PAINT QUANTITIES

PROJECT NO	COUNTY	MAP NO	ROUTE	DESCRIPTION	4810000000-E		4830000000-E	4835000000-E	4840000000-N	
					4" WHITE PAINT LF	4" YELLOW PAINT LF	16" WHITE PAINT LF	24" WHITE PAINT LF	PAINT MSG RXR EA	PAINT MSG SCHOOL EA
14CR.20451.8	Henderson	1	SR1166	FROM NC225 TO NC225	32,314	32,314				
		2	SR1173	FROM US64 TO SR1180	16,685	16,685	100	50	4	
		3	SR1202	FROM SR1191 TO TRANSYLVANIA CO.	4,435	4,435				
		4	SR1508	FROM SR1511 TO SR1503	27,456	27,456				
		5	SR1536	FROM SR1537 TO SR1006	9,926	9,926	100	50	4	
		6	SR1537	FROM US25 TO SR1536	7,392	7,392				
		7	SR1557	FROM SR1673 TO DEAD END	6,547	6,547				
		8	SR1803	FROM SR1722 TO SR1804	40,973	40,973				
		9	SR1804	FROM 1803 TO SR1783	9,715	9,715		100		12
		10	SR2271	FROM US64 TO DEAD END	14,362	14,362				
<b>TOTAL FOR PROJ NO. 14CR.20451.8</b>				<b>169,805</b>	<b>169,805</b>	<b>200</b>	<b>200</b>	<b>8</b>	<b>12</b>	
				<b>339,610</b>				<b>20</b>		
14CR.20751.7	Polk	11	SR1137	FROM NC108 TO SR1135	60,614	60,614				
<b>TOTAL FOR PROJ NO. 14CR.20751.7</b>				<b>60,614</b>	<b>60,614</b>					
				<b>121,228</b>						
14CR.20881.7	Transylvania	12	SR1543	FROM SR1540 TO END OF SYSTEM	25,766	25,766				
		13	SR1118	FROM SR1116 TO PVMT CHNG 0.71 MILE EAST	14,995	14,995				
		14	SR1528	FROM US64 TO SR1530	42,240	42,240				
<b>TOTAL FOR PROJ NO. 14CR.20881.7</b>				<b>83,001</b>	<b>83,001</b>					
				<b>166,002</b>						
<b>GRAND TOTAL</b>				<b>313,420</b>	<b>313,420</b>	<b>200</b>	<b>200</b>	<b>8</b>	<b>12</b>	
				<b>626,840</b>				<b>20</b>		

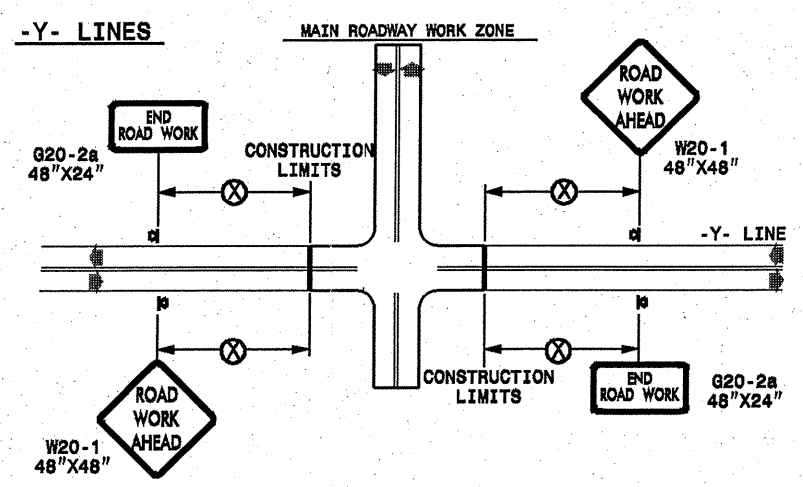
**TWO-WAY UNDIVIDED \*\* (L-LINES)**



POSTED SPEED LIMIT (M.P.H.)	RECOMMENDED MINIMUM SIGN SPACING
≤ 50	500'
≥ 55	1000'

STATE OF NORTH CAROLINA  
DEPT. OF TRANSPORTATION  
DIVISION OF HIGHWAYS  
RALEIGH, N.C.

**ROADWAYS INTERSECTING ALONG 2 WAY UNDIVIDED WORK ZONE (Y-LINES)**



DETAIL DRAWING  
FOR TWO-WAY UNDIVIDED  
WORK ZONE WARNING SIGNS

**GENERAL NOTES**

- USE FLUORESCENT ORANGE SHEETING (TYPE VII OR HIGHER) ON ALL ADVANCE WORK ZONE SIGNS.
- DO NOT INSTALL ADVANCE WARNING SIGNS MORE THAN 3 DAYS PRIOR TO BEGINNING OF WORK.
- ALL SIGN SPACING DIMENSIONS ARE APPROXIMATE, FIELD ADJUST AS NECESSARY OR AS DIRECTED.
- USE PORTABLE WORK ZONE SIGNS ONLY WITH PORTABLE WORK ZONE SIGN STANDS SPECIFICALLY DESIGNED FOR ONE ANOTHER. PORTABLE WORK ZONE SIGNS MAY BE ROLL UP OR APPROVED COMPOSITE.
- PROVIDE PORTABLE WORK ZONE SIGN STANDS, PORTABLE SIGNS AND SIGN SHEETING WHICH ARE LISTED ON THE NORTH CAROLINA DEPARTMENT OF TRANSPORTATION'S APPROVED PRODUCT LIST OR ACCEPTED AS TRAFFIC QUALIFIED BY THE TRAFFIC CONTROL UNIT.
- \*\* TWO-WAY UNDIVIDED ADVANCE WARNING SIGN CONFIGURATION MAY BE USED ON URBAN MULTI-LANE FACILITIES WHERE CONDITIONS LIMIT THE USE OF DUAL MOUNTED SIGNS AS DETERMINED BY THE ENGINEER.

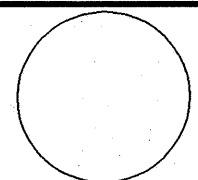
**LEGEND**

◀ PORTABLE SIGN

➡ DIRECTION OF TRAFFIC FLOW

SHEET 1 OF 1

30-APR-2009 16:12 SA\Sigmond\Resur\_facing\030509\Resur\_facing\030509\Div4\C202352\_14CR20451.8-3\_HendPolk Trans.SRs\C202352\_14CR20451.8-3\_HPT\_2wayundivurb\_fr wys.july2006.portable.dgn

APPROVED: _____ DATE: _____	DETAIL DRAWING FOR TWO-WAY UNDIVIDED ADVANCED WORK ZONE WARNING SIGNS	SCALE: NONE	REVISIONS
SEAL 		DATE: 7-98 DWG. BY: DESIGN BY: REVIEWED BY:	10/01 09/04 11/04