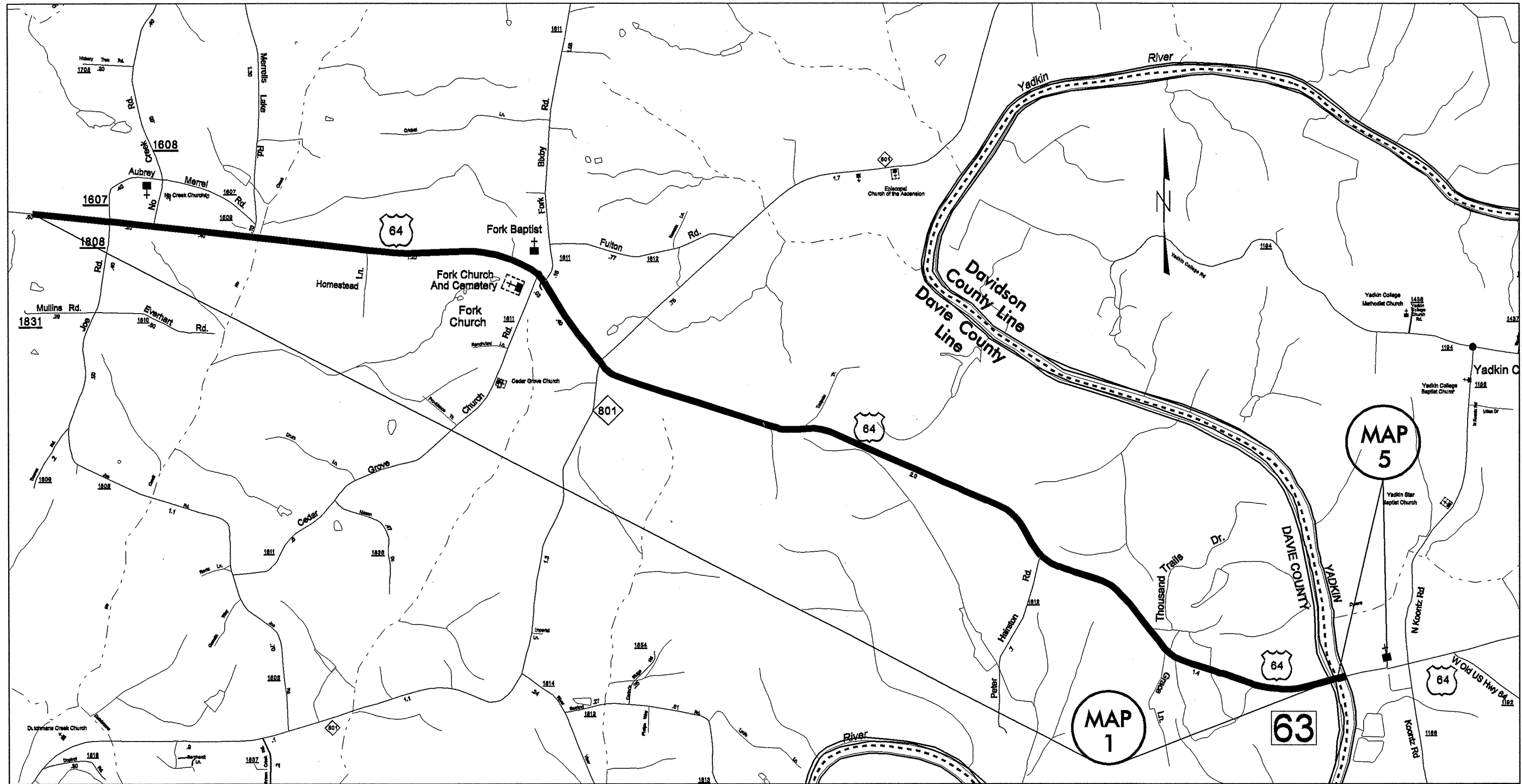


NOTES:  
 Map 1 NC 64  
 Mill Yadkin River bridge approaches and roadway 1.5" to One Thousand Trails Campground.  
 Tie into Joe Road maintenance widening project if under construction.

Maintain shoulder drop off to no more than 1 1/2" at all times. This Map will be completed with 2 lifts.  
 Omit Binder course in newly resurfaced / widened areas.  
 Utilize Surface course with 10% Gilsonite Additive to Asphalt Cement.

NOTES:  
 Map 5 US 64  
 Mill entire map 1.5" and overlay with S9.5C  
 Utilize Surface course with 10% Gilsonite additive to Asphalt Cement

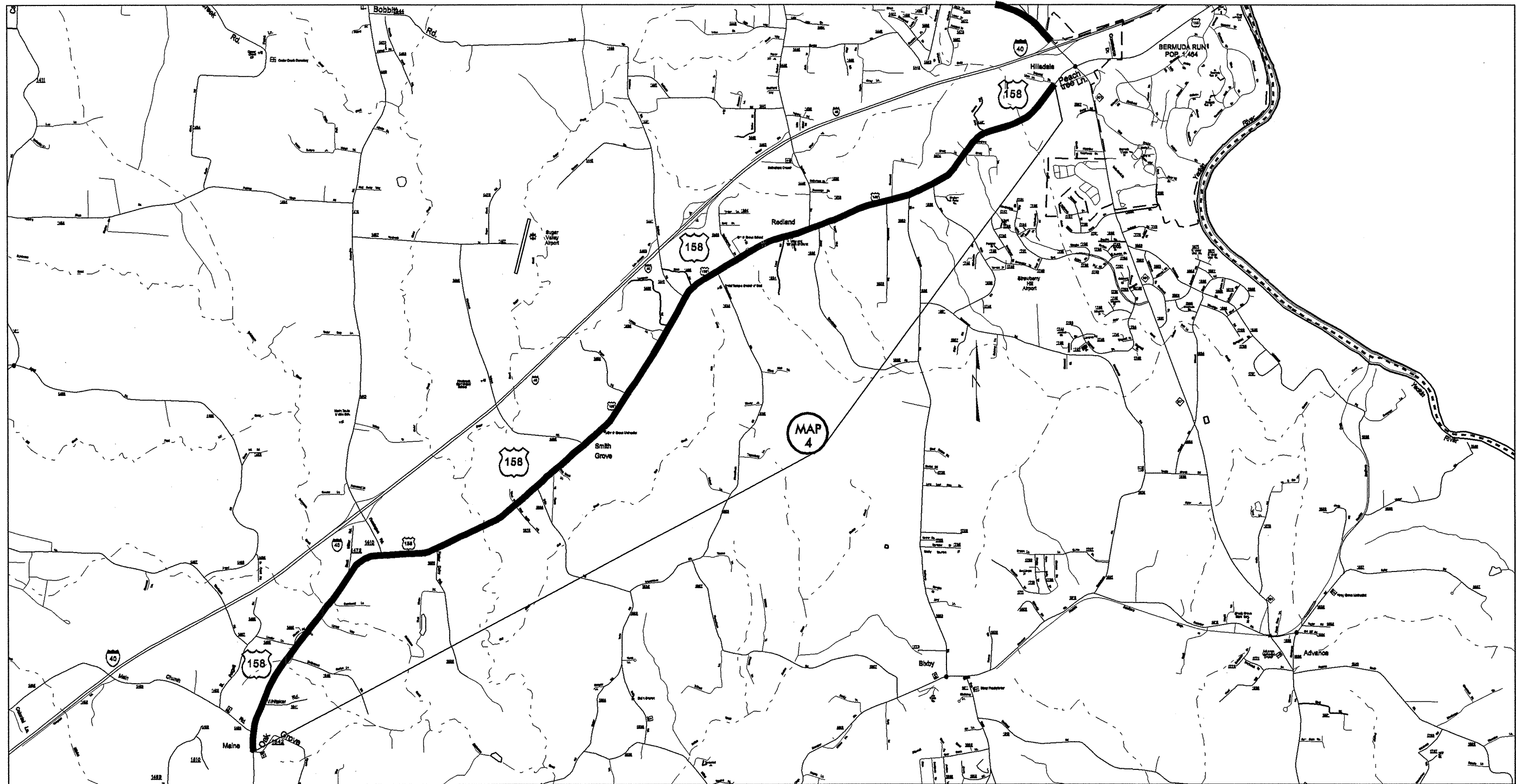
SHEET NO. 1  
 DAVIE & DAVIDSON COUNTY  
 R-5172  
 MAP LOCATION SHEET (1 OF 4)



# MAPS 1 & 5

DAVIE & DAVIDSON COUNTY

NORTH CAROLINA

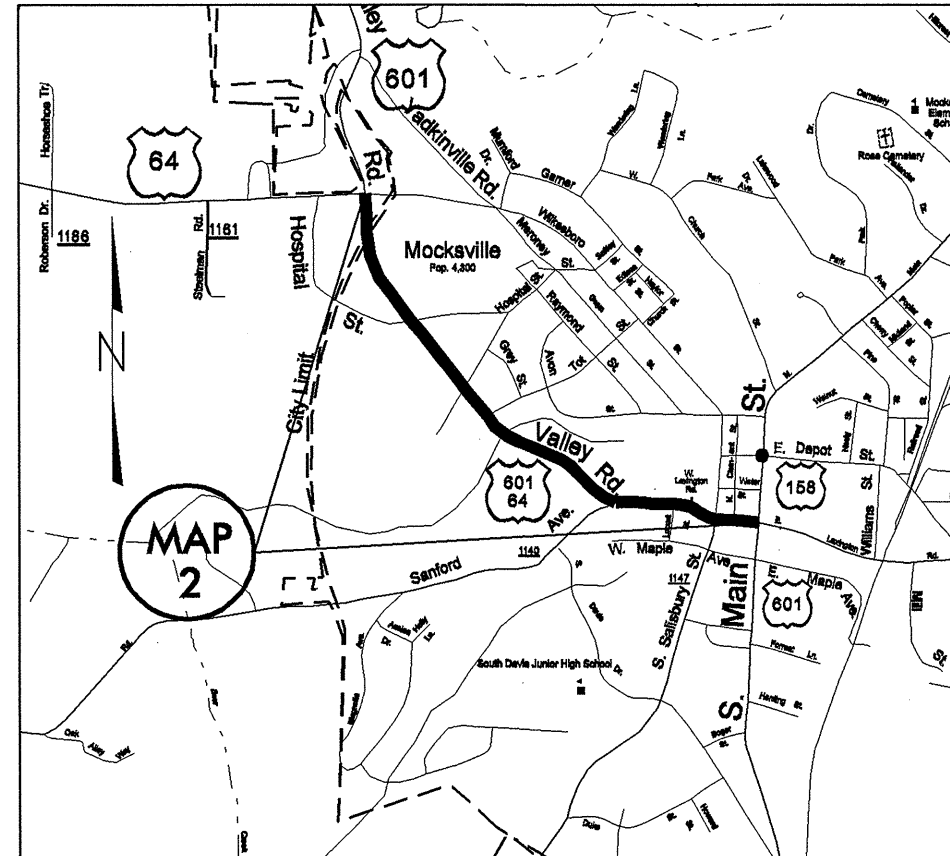


# MAP 4

# DAVIE & DAVIDSON COUNTY

NORTH CAROLINA

NOTES:  
Map 2 US 601 /US 64 Valley Rd.  
Trough curb and gutter, not to exceed  
1.5"  
Night time work only.Utilize Surface  
course with 10% Gilsonite Additive to  
Asphalt Cement.Mill map approaches.

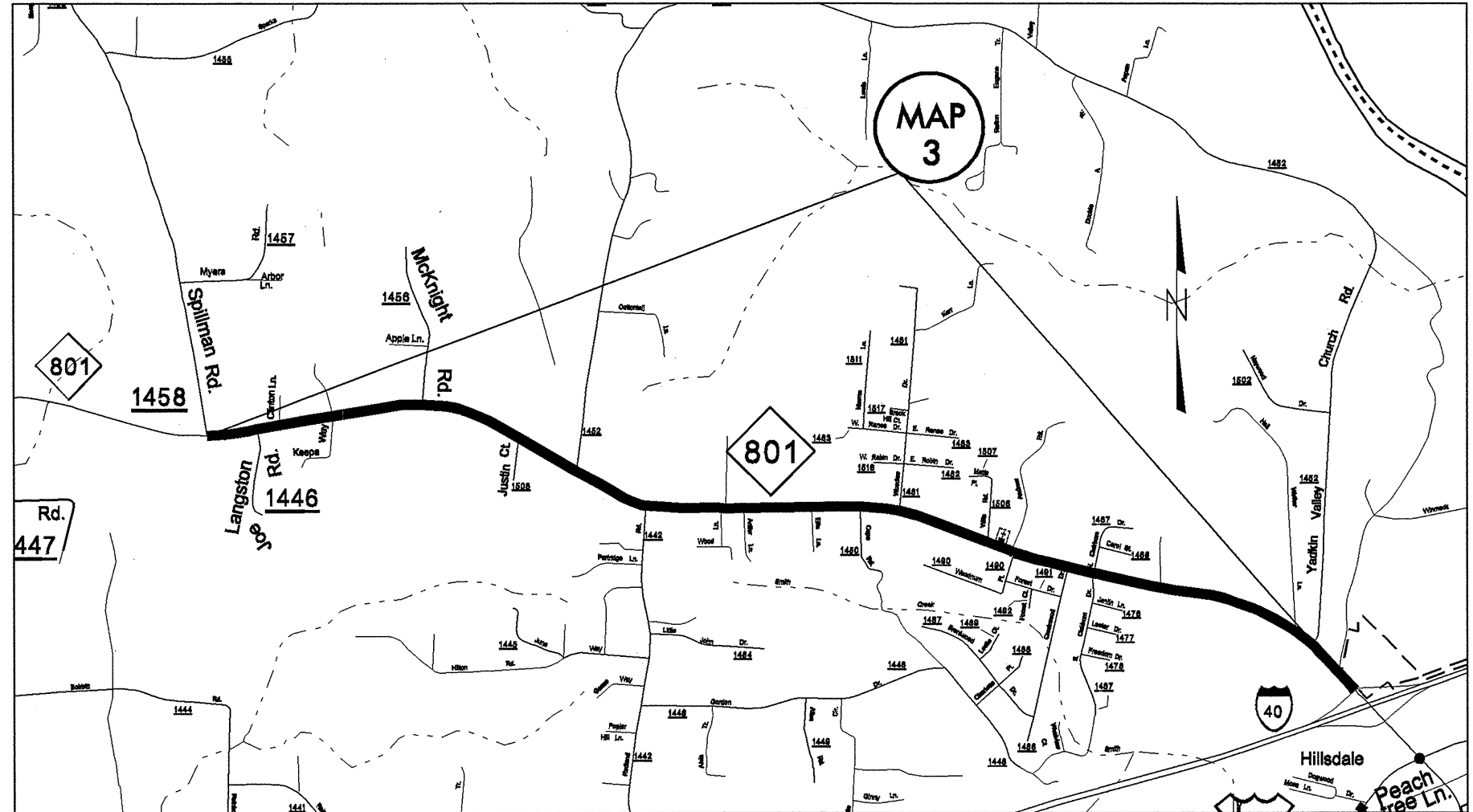


MAP 2

DAVIE & DAVIDSON COUNTY

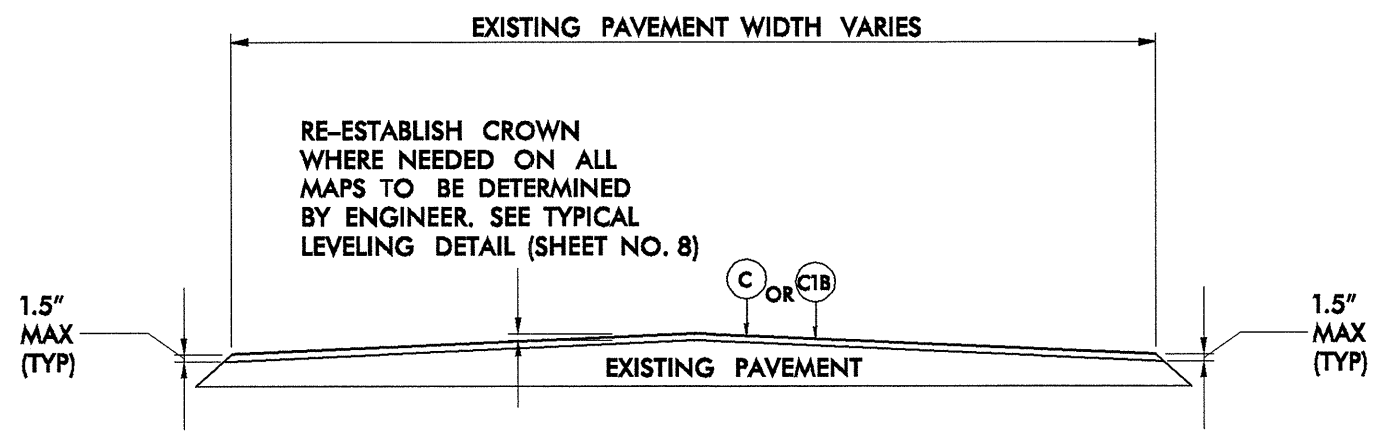
NORTH CAROLINA

NOTES:  
Map 3 NC 601  
Coordinate with TIP Project B-3637.  
Mill map approaches

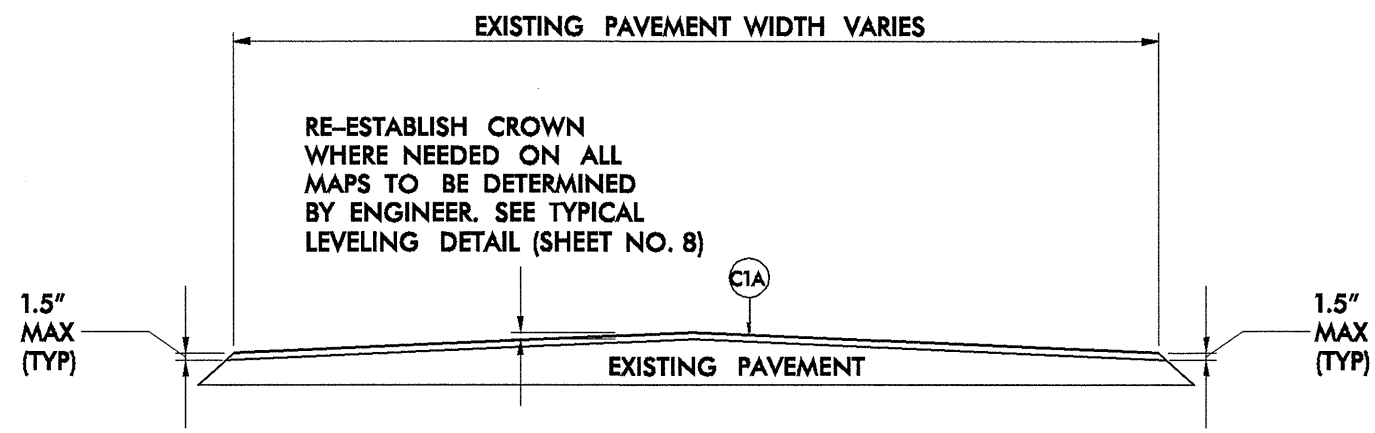


# MAP 3

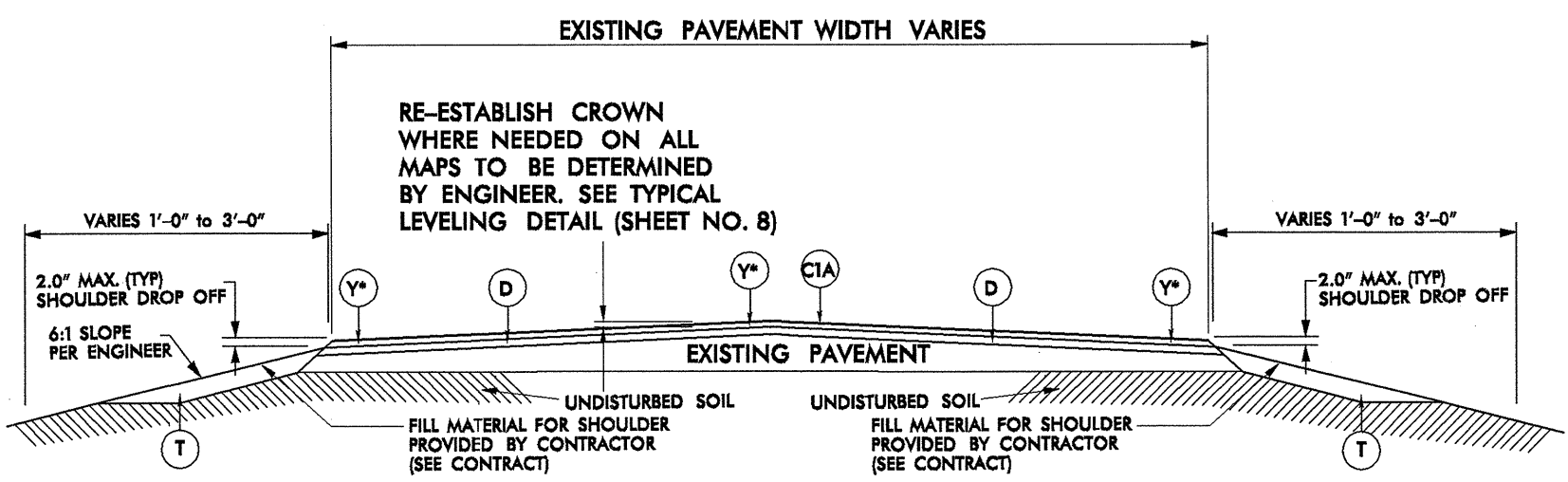
DAVIE & DAVIDSON COUNTY  
NORTH CAROLINA



**TYPICAL SECTION NO. 1**  
 MAP NO 3 NC 801  
 MAP NO 4 US 158



**TYPICAL SECTION NO. 3**  
 MAP NO 1 US 64  
 MAP NO 2 US 601 /US 64 VALLEY RD

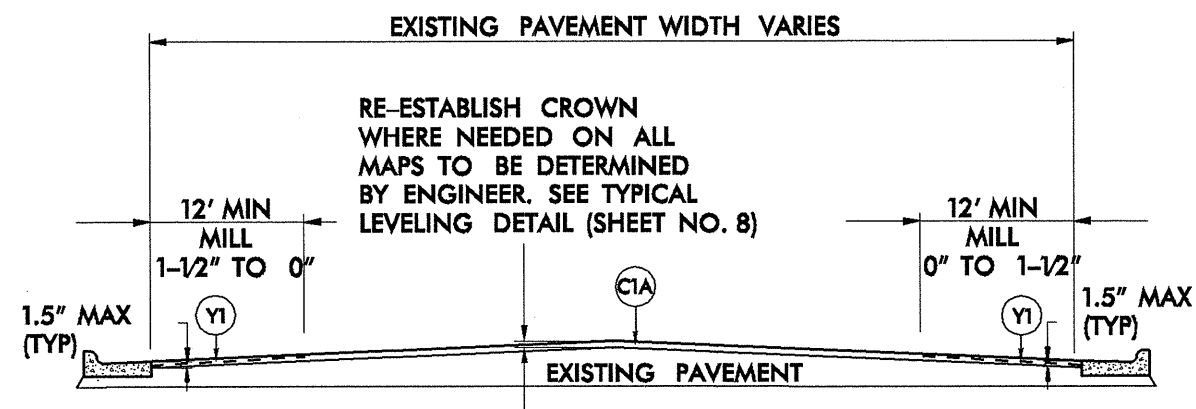


**TYPICAL SECTION NO. 2**  
 MAP 1 US 64

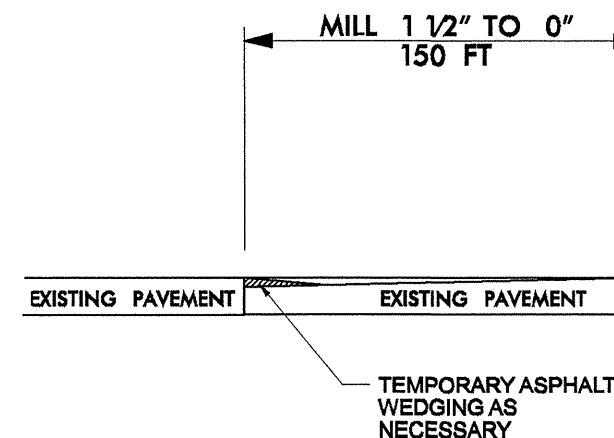
Y\* Mill whole width only from Yadkin River Bridge to Thousand Trails Entrance.

NOTE:  
 All CURB AND GUTTER IS EXISTING

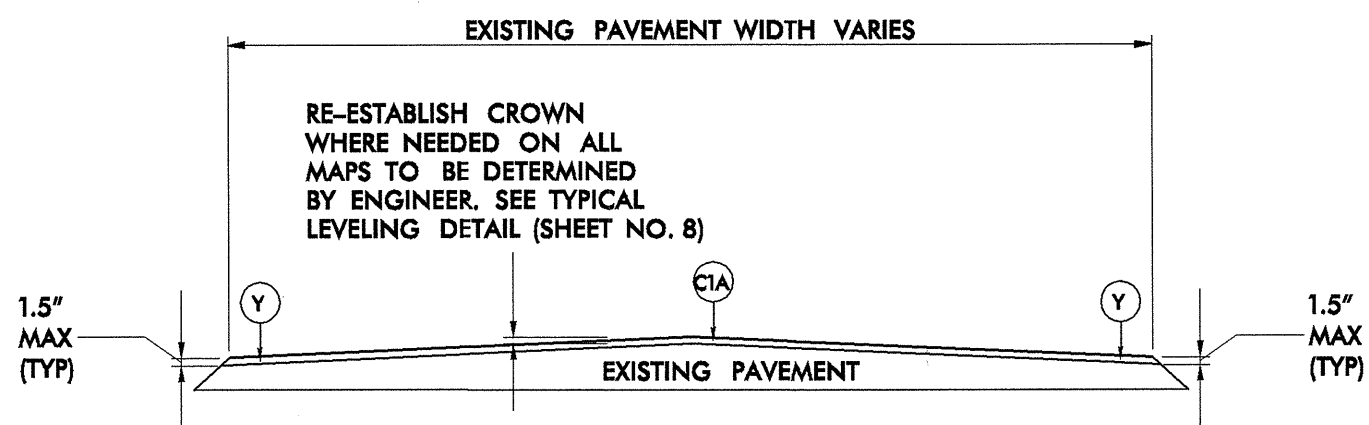
PAVEMENT SCHEDULE	
C	PROP. APPROX. 1.5" ASPHALT CONCRETE SURFACE COURSE, TYPE S9.5B, TO BE APPLIED AT AN AVERAGE RATE OF 168 LBS PER SQ YD
C1A	PROP. APPROX. 1.5" ASPHALT CONCRETE SURFACE COURSE, TYPE S9.5C, WITH 10% GILSONITE ADDITIVE IN PG 70-22 ASPHALT CEMENT, TO BE APPLIED AT AN AVERAGE RATE OF 168 LBS PER SQ YD
C1B	PROP. APPROX. 1.5" ASPHALT CONCRETE SURFACE COURSE, TYPE S9.5C, TO BE APPLIED AT AN AVERAGE RATE OF 168 LBS PER SQ YD
C2	PROP. VAR. DEPTH ASPHALT CONCRETE SURFACE LEVELING COURSE, TYPE S9.5B
D	PROP. APPROX. 2.5" ASPHALT CONCRETE INTERMEDIATE COURSE, TYPE I19.0C, TO BE APPLIED AT AN AVERAGE RATE OF 285 LBS PER SQ YD
T	SUITABLE MATERIAL FOR SHOULDER RECONSTRUCTION
Y	MILL ASPHALT PAVEMENT, 1.5" DEPTH
Y1	MILL ASPHALT PAVEMENT, 0" TO 1.5" DEPTH
Y2	MILL ASPHALT PAVEMENT, 1.5" TO 4" DEPTH
Y3	MILL ASPHALT PAVEMENT, 0" TO 2.5" DEPTH



**TYPICAL SECTION NO. 4**  
 MAP NO 2 US 601/US 64 VALLEY RD



**MILLED TIE-IN DETAIL**  
 MILLED PAVEMENT JOINT AT END OF  
 MAPS 1, 2, 3, AND 4



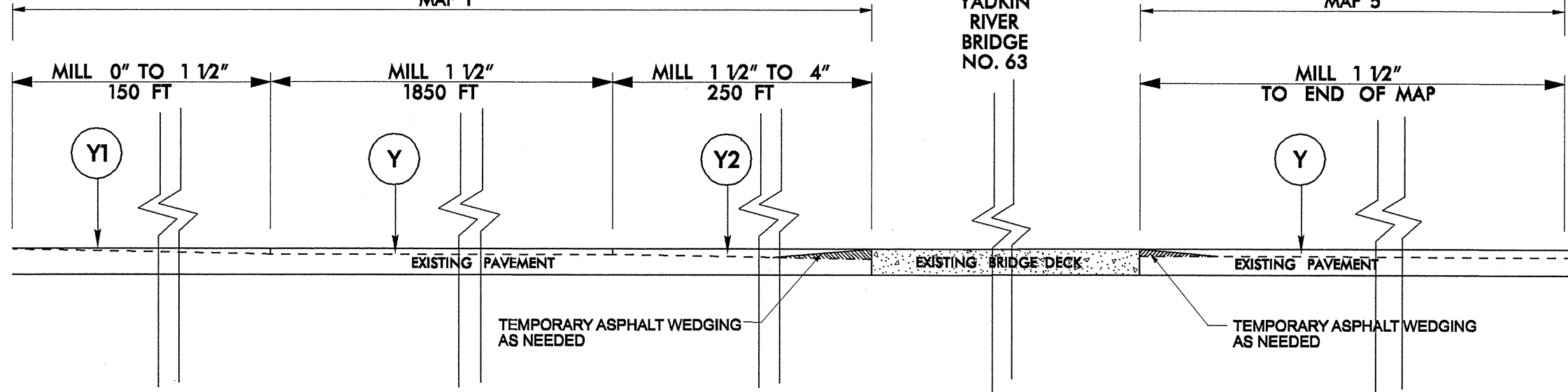
**TYPICAL SECTION NO. 5**  
 MAP NO 5 US 64

PAVEMENT SCHEDULE	
C	PROP. APPROX. 1.5" ASPHALT CONCRETE SURFACE COURSE, TYPE S9.5B, TO BE APPLIED AT AN AVERAGE RATE OF 168 LBS PER SQ YD
C1A	PROP. APPROX. 1.5" ASPHALT CONCRETE SURFACE COURSE, TYPE S9.5C, WITH 10% GILSONITE ADDITIVE IN PG 70-22 ASPHALT CEMENT, TO BE APPLIED AT AN AVERAGE RATE OF 168 LBS PER SQ YD
C1B	PROP. APPROX. 1.5" ASPHALT CONCRETE SURFACE COURSE, TYPE S9.5C, TO BE APPLIED AT AN AVERAGE RATE OF 168 LBS PER SQ YD
C2	PROP. VAR. DEPTH ASPHALT CONCRETE SURFACE LEVELING COURSE, TYPE S9.5B
D	PROP. APPROX. 2.5" ASPHALT CONCRETE INTERMEDIATE COURSE, TYPE I19.0C, TO BE APPLIED AT AN AVERAGE RATE OF 285 LBS PER SQ YD
T	SUITABLE MATERIAL FOR SHOULDER RECONSTRUCTION
Y	MILL ASPHALT PAVEMENT, 1.5" DEPTH
Y1	MILL ASPHALT PAVEMENT, 0" TO 1.5" DEPTH
Y2	MILL ASPHALT PAVEMENT, 1.5" TO 4" DEPTH
Y3	MILL ASPHALT PAVEMENT, 0" TO 2.5" DEPTH

ONE  
 THOUSAND  
 TRIALS  
 CAMPGROUND

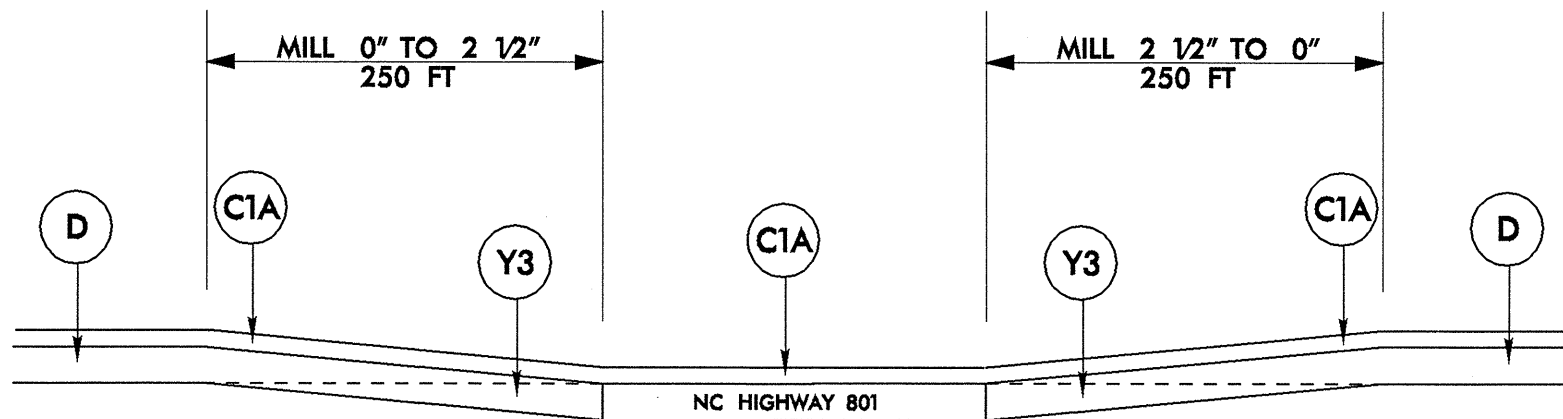
DAVIE  
 COUNTY  
 MAP 1

DAVIDSON  
 COUNTY  
 MAP 5

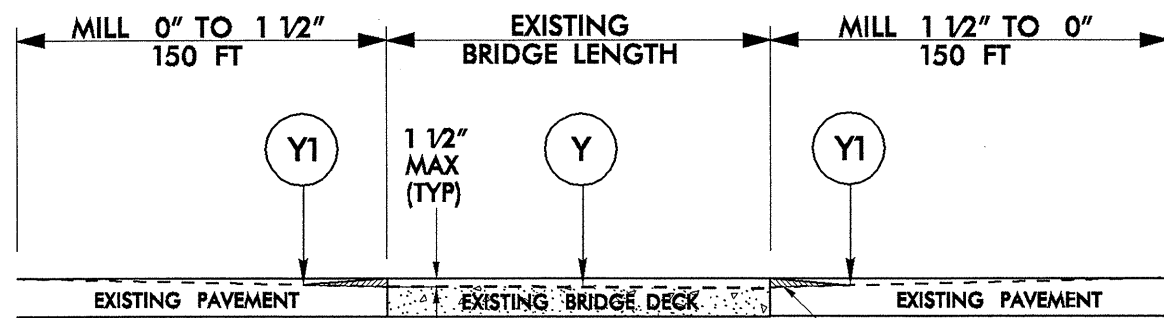


**MILLING DETAIL NO.1**  
 MAP NO 1 NC 64 DAVIE COUNTY  
 MAP NO 5 NC 64 DAVIDSON COUNTY

PAVEMENT SCHEDULE	
C	PROP. APPROX. 1.5" ASPHALT CONCRETE SURFACE COURSE, TYPE S9.5B, TO BE APPLIED AT AN AVERAGE RATE OF 168 LBS PER SQ YD
C1A	PROP. APPROX. 1.5" ASPHALT CONCRETE SURFACE COURSE, TYPE S9.5C, WITH 10% GILSONITE ADDITIVE IN PG 70-22 ASPHALT CEMENT, TO BE APPLIED AT AN AVERAGE RATE OF 168 LBS PER SQ YD
C1B	PROP. APPROX. 1.5" ASPHALT CONCRETE SURFACE COURSE, TYPE S9.5C, TO BE APPLIED AT AN AVERAGE RATE OF 168 LBS PER SQ YD
C2	PROP. VAR. DEPTH ASPHALT CONCRETE SURFACE LEVELING COURSE, TYPE S9.5B
D	PROP. APPROX. 2.5" ASPHALT CONCRETE INTERMEDIATE COURSE, TYPE I19.0C, TO BE APPLIED AT AN AVERAGE RATE OF 285 LBS PER SQ YD
T	SUITABLE MATERIAL FOR SHOULDER RECONSTRUCTION
Y	MILL ASPHALT PAVEMENT, 1.5" DEPTH
Y1	MILL ASPHALT PAVEMENT, 0" TO 1.5" DEPTH
Y2	MILL ASPHALT PAVEMENT, 1.5" TO 4" DEPTH
Y3	MILL ASPHALT PAVEMENT, 0" TO 2.5" DEPTH

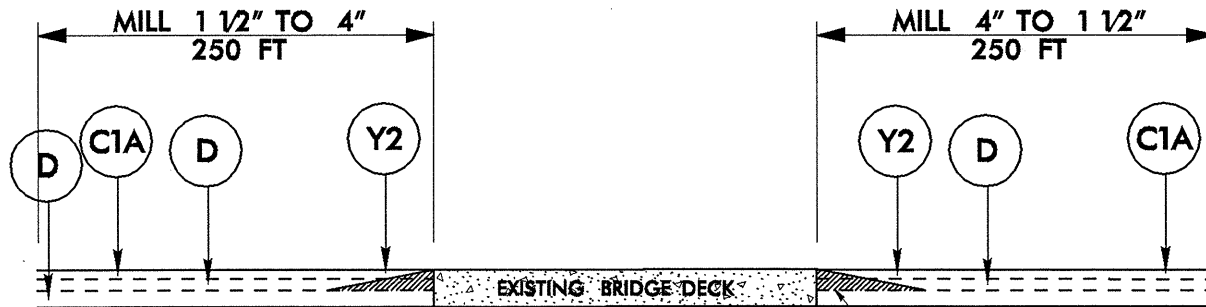


**MILLING DETAIL NO. 2**  
 MAP NO 1 AT NC 801



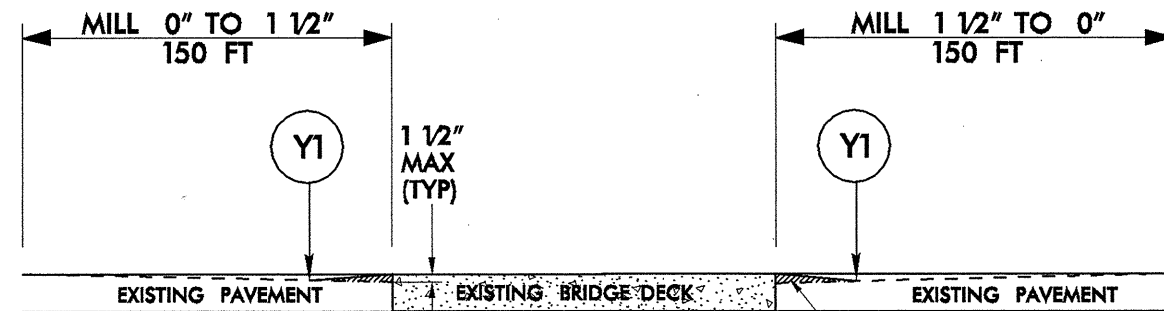
**DETAIL A**  
**MILL BRIDGE DECK AND APPROACHES**  
 (SEE BRIDGE DATA SHEET FOR PAVING INSTRUCTIONS)

TEMPORARY ASPHALT WEDGING  
 (TYPICAL BOTH SIDES OF BRIDGE)  
 IF APPROACHES ARE MILLED PRIOR  
 TO MILLING BRIDGE DECK



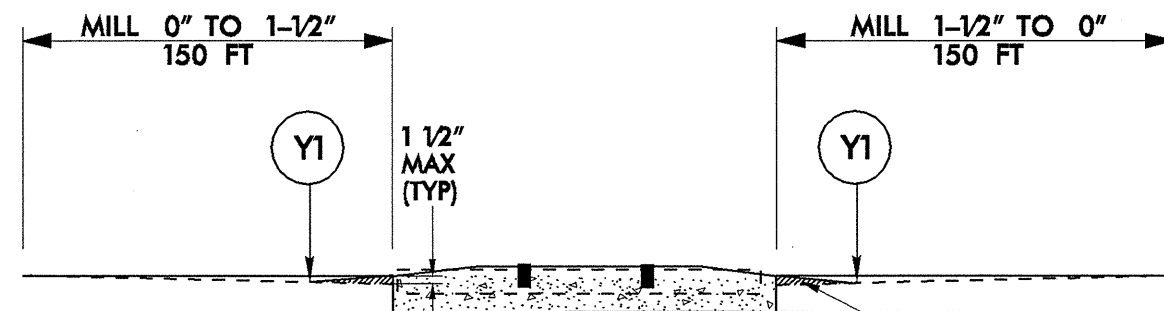
**DETAIL B**  
**MILLING BRIDGE APPROACHES**  
 (SEE BRIDGE DATA SHEET FOR PAVING INSTRUCTIONS)  
 MAP NO 1 US 64

EXISTING PAVEMENT  
 TEMPORARY ASPHALT WEDGING  
 (TYPICAL BOTH SIDES OF BRIDGE)



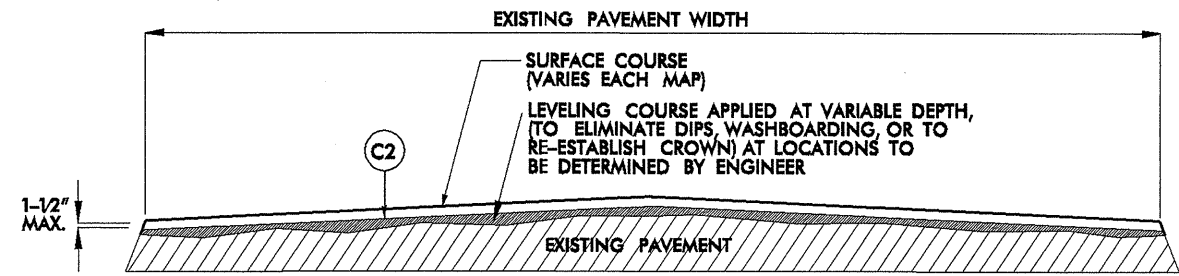
**DETAIL C**  
**MILLING BRIDGE APPROACHES**  
 (SEE BRIDGE DATA SHEET FOR PAVING INSTRUCTIONS)

TEMPORARY ASPHALT WEDGING  
 (TYPICAL BOTH SIDES OF BRIDGE)

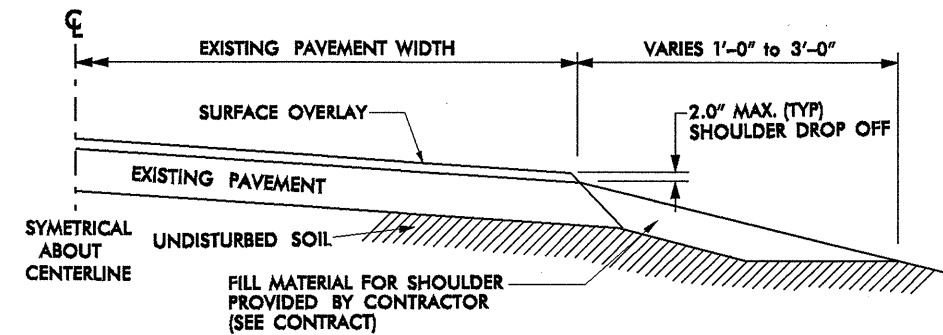


**DETAIL D**  
**MILLING RAILROAD CROSSING APPROACHES**

TEMPORARY ASPHALT WEDGING  
 (TYPICAL BOTH SIDES OF CROSSING)  
 SEE 'CONSTRUCTION NOTES'



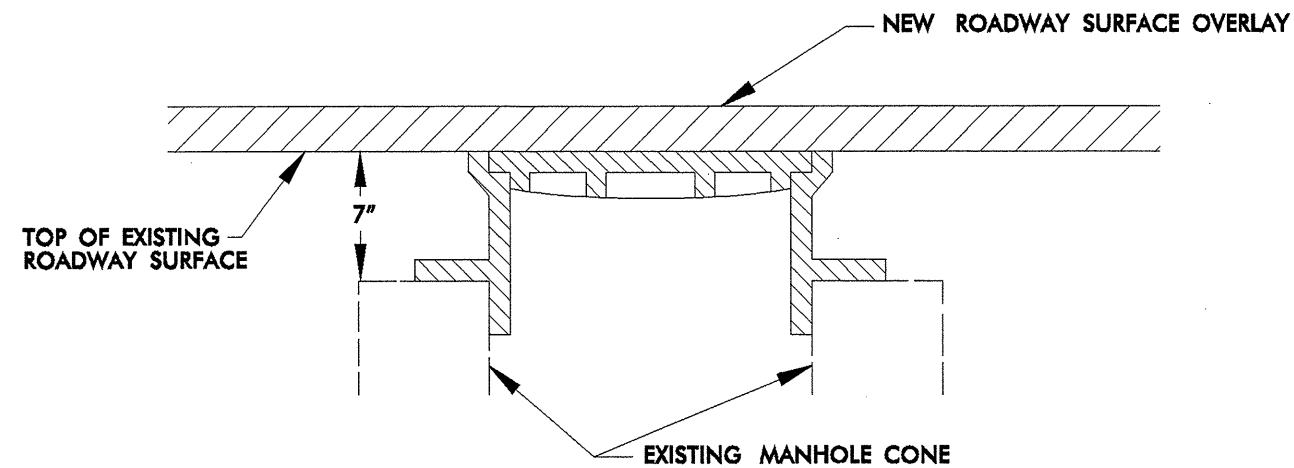
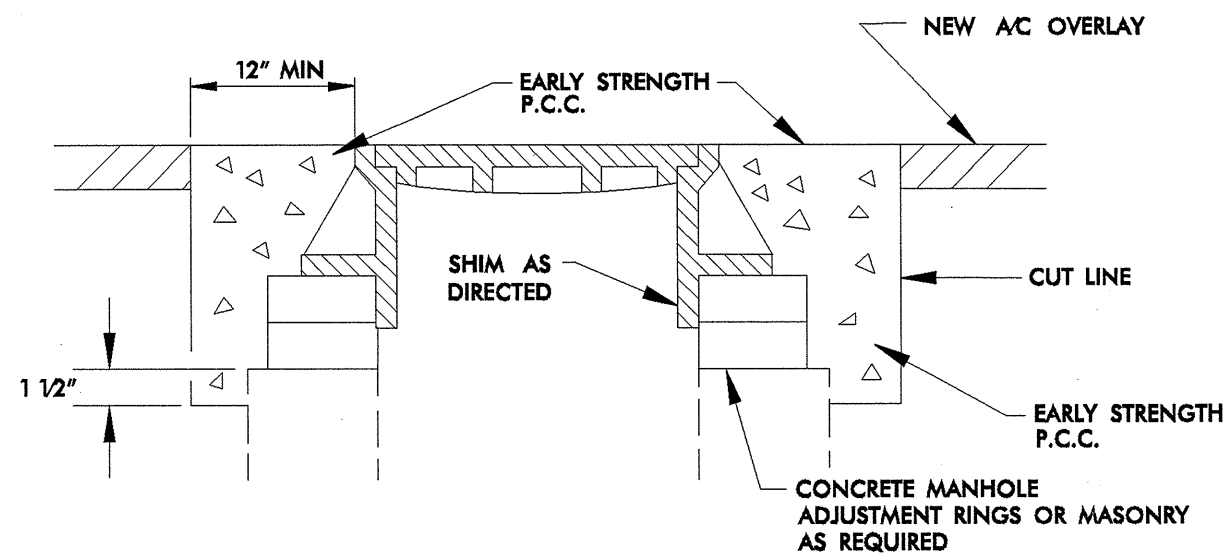
**TYPICAL LEVELING DETAIL**



**SHOULDER DROP OFF REPAIR**

PAVEMENT SCHEDULE	
C	PROP. APPROX. 1.5" ASPHALT CONCRETE SURFACE COURSE, TYPE S9.5B, TO BE APPLIED AT AN AVERAGE RATE OF 168 LBS PER SQ YD
C1A	PROP. APPROX. 1.5" ASPHALT CONCRETE SURFACE COURSE, TYPE S9.5C, WITH 10% GILSONITE ADDITIVE IN PG 70-22 ASPHALT CEMENT, TO BE APPLIED AT AN AVERAGE RATE OF 168 LBS PER SQ YD
C1B	PROP. APPROX. 1.5" ASPHALT CONCRETE SURFACE COURSE, TYPE S9.5C, TO BE APPLIED AT AN AVERAGE RATE OF 168 LBS PER SQ YD
C2	PROP. VAR. DEPTH ASPHALT CONCRETE SURFACE LEVELING COURSE, TYPE S9.5B
D	PROP. APPROX. 2.5" ASPHALT CONCRETE INTERMEDIATE COURSE, TYPE I19.0C, TO BE APPLIED AT AN AVERAGE RATE OF 285 LBS PER SQ YD
T	SUITABLE MATERIAL FOR SHOULDER RECONSTRUCTION
Y	MILL ASPHALT PAVEMENT, 1.5" DEPTH
Y1	MILL ASPHALT PAVEMENT, 0" TO 1.5" DEPTH
Y2	MILL ASPHALT PAVEMENT, 1.5" TO 4" DEPTH
Y3	MILL ASPHALT PAVEMENT, 0" TO 2.5" DEPTH



**STEP 1****STEPS 2,3, & 4**

- STEP 1** COVER EXISTING MANHOLE WITH APPROVED MATERIAL AND CONSTRUCT OVERLAY ACROSS TOP OF MANHOLE
- STEP 2** SAW CUT EXCAVATION AROUND MANHOLE 12" MIN. FROM MANHOLE FRAME.
- STEP 3** RAISE MANHOLE FRAME RINGS TO FINISH PAVEMENT PROFILE AND CROSS SLOPE.
- STEP 4** BACKFILL WITH EARLY STRENGTH P.C.C. TO DEPTHS AS DIRECTED.

**MANHOLE ADJUSTMENT DETAIL****CONSTRUCTION NOTES:**

- ALL QUANTITIES ARE "ESTIMATED" AS INDICATED IN THE "SUMMARY OF QUANTITIES".
- CONSTRUCTION SHALL PROGRESS IN PHASES, IN THE ORDER INDICATED BELOW:
  - PHASE 1 - PATCHING (WHEN REQUIRED)
  - PHASE 2 - LEVELING (AS DIRECTED BY ENGINEER)
  - PHASE 3 - SURFACE OVERLAY
  - PHASE 4 - SHOULDER DROP-OFF REPAIR (AS NEEDED AND DIRECTED BY ENGINEER)
  - PHASE 5 - UTILITY ADJUSTMENTS (MANHOLE RING/COVER, VALVE/METER BOX RING/COVER, CATCH BASIN GRATE/COVER, DROP INLET GRATE/COVER, ETC.) WHEN REQUIRED.
- BRIDGES THAT HAVE FLOOR DRAINS, SHALL HAVE ALL FLOOR DRAINS LEFT OPEN. EXTRA CARE SHALL BE EXERCISED IN MILLING (IF REQUIRED) AND IN PLACING THE WEARING SURFACE AROUND FLOOR DRAINS SO AS NOT TO HINDER EFFECTIVE DRAINAGE.
- TEMPORARY ASPHALT WEDGING SHALL BE PLACED ON THE SAME DAY THAT BRIDGE AND/OR RAILROAD APPROACHES ARE MILLED (AND IF APPROACHES ARE MILLED PRIOR TO BRIDGE DECK).
- SOME MAPS MAY REQUIRE EXTRA ASPHALT SURFACE (LEVELING) TO BE PLACED TO ELIMINATE UNEVEN PAVEMENT, WASH BOARDING OR TO RE-ESTABLISH THE CROWN. THE QUANTITY AND LOCATION OF THIS ITEM SHALL BE AS DIRECTED BY THE ENGINEER.
- PAPER JOINTS ARE TO BE PLACED BETWEEN DAY'S OF PAVING OPERATIONS AS SPECIFIED IN THE STANDARD SPECIFICATIONS SECTION 610-11.
- ALL MILLED AREAS WILL BE PAVED DURING THE SAME DAYS OPERATION UNLESS APPROVED BY THE ENGINEER.
- REPLACE ANY PORTION OF STOP BARS AND OTHER PAVEMENT MARKINGS AT ANY INTERSECTION INCLUDING Y-LINES NOT ACTUALLY BEING PAVED OVER, THAT ARE OBLITERATED BY THE PAVING OPERATION EITHER BY HAULING WHEEL TRACKS OR TACK TRUCK BY THE END OF EACH RESURFACING OPERATION.

Map Number	Route Number	Route Name	Bridge Number	Feature Intersected	Floor Construction	Clear Roadway Width (Ft)	Length (Ft)	Posting	Recommended Treatment From Bridge Maintenance
1	US-64	US-64	63	Yadkin River	Concrete	36 Ft.	900 Ft.	NP	Do Not Pave Bridge
5	US-64	US-64	63	Yadkin River	Concrete	36 Ft.	900 Ft.	NP	Do Not Pave Bridge

PROJECT NO.	SHEET NO.	TOTAL NO.
R-5172	11	12

### SUMMARY OF QUANTITIES

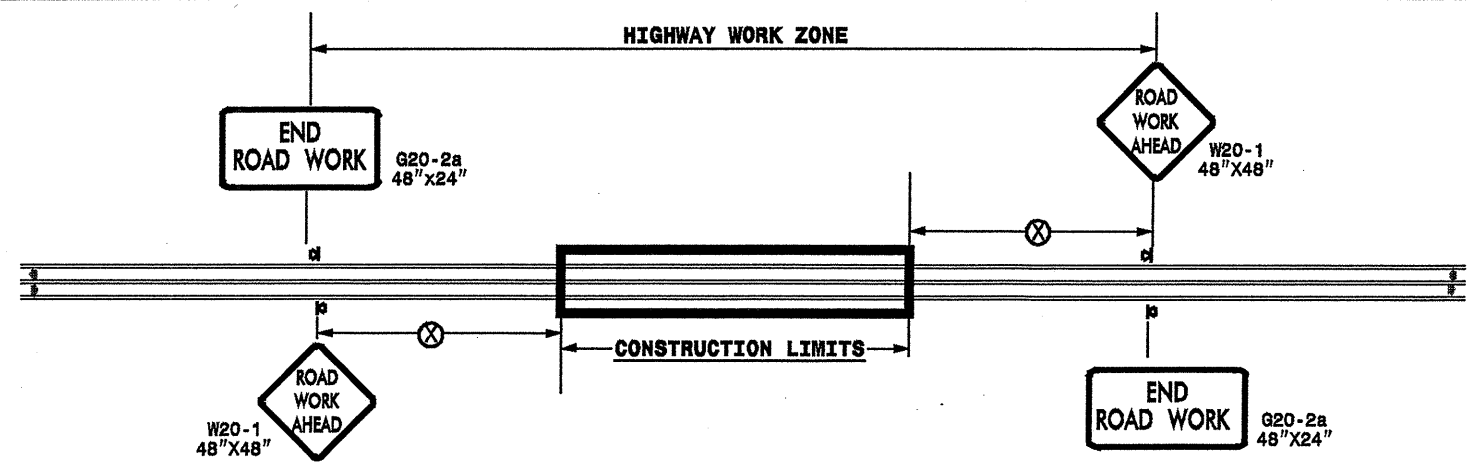
PROJECT NO.	COUNTY	MAP NO.	ROUTE	DESCRIPTION	TYP	LENGTH MI	WIDTH FT	FINAL SURFACE TESTING	SHOULDER DROP OFF REPAIR	INCIDENTAL STONE BASE	SHOULDER RECONSTR.	1 1/2" MILLING	0" TO 1-1/2" DEPTH MILLING	0" TO 2.5" MILLING	1.5" TO 4" MILLING	INTERMEDIATE COURSE, I19.0C	SURFACE COURSE, S9.5B	LEVELING COURSE, S9.5B	SURFACE COURSE, S9.5C	PG 64-22 PLANT MIX	PG 70-22 PLANT MIX	PATCHING EXISTING PAVEMENT	GILSONITE ADDITIVE FOR ASPHALT PLANT MIX	ADJUSTMENT OF MANHOLES	ADJUSTMENT OF METER OR VALVE BOX
NO		NO			NO	MI	FT		SMI	TONS	SMI	SY	SY	SY	SY	TONS	TONS	TONS	TONS	TONS	TONS	TONS	TON	EA	EA
R-5172	Davie	1	US 64	FROM DAVIDSON COUNTY LINE TO PAVEMENT JOINT IN FRONT OF LAKE LOUISE GOLF COURSE	2,3	6.03	29	NO		351	12.06	5760	470	2350	780	13890			9,969	653	598	100	60		2
"		2	US 801 / US 64 VALLEY ROAD	FROM US 158 NORTH MAIN STREET TO US 64	3,4	1.235	39	NO	0.9				1680					32	2,749	2	165	120	17	6	6
"		3	NC 801	FROM SR 1458 SPILLMAN ROAD TO PAVEMENT JOINT AT NORTH END OF I-40 TIP PROJECT	1	3.063	25	NO	3.06	258			850				4172	22		252		100			
"		4	US 158	FROM PAVEMENT JOINT WEST OF PEACHTREE LANE (NS) TO PAVEMENT JOINT AT OAK GROVE CHURCH ROAD SR 1642	1	8.02	24	NO	8.02	531		420	2800						30	11,269	2	676	200		4
TOTAL FOR PROJ NO. R-5172						18.348			11.98	1140	12.06	6180	5800	2350	780	13890	4172	84	23,987	909	1,439	520	77	6	12
R-5172	Davidson	5	US 64	FROM PAVEMENT JOINT EAST OF YADKIN RIVER BRIDGE TO BRIDGE	5	0.088	28	NO				1445							134		8		1		
TOTAL FOR PROJ NO. R-5172						0.088						1445							134		8		1		
GRAND TOTAL						18.436			11.98	1,140	12.06	7,625	5,800	2,350	780	13,890	4,172	84	24,121	909	1,447	520	78	6	12

PROJECT NO.	SHEET NO.	TOTAL NO.
R-5172	12	12

## THERMOPLASTIC AND PAINT QUANTITIES

PROJECT NO	COUNTY	MAP NO	ROUTE	DESCRIPTION	4605000000-N	4589000000-N	4685000000-E	4686000000-E		4695000000-E		4710000000-E	4721000000-E	4725000000-E			4810000000-E		4820000000-E	4835000000-E	4845000000-N	4905000000-N	
					LAW ENFORCEMENT	TRAFFIC CONTROL	4" X 90 M WHITE THERMO	4" X 120 M YELLOW THERMO	4" X 120 M WHITE THERMO	8" X 90 M YELLOW THERMO	8" X 90 M WHITE THERMO	24" X 120 M WHITE THERMO	THERMO MSG ONLY 120 M	THERMO LT ARROW 90 M	THERMO RT ARROW 90 M	THERMO STR & RT ARROW 90 M	4" WHITE PAINT	4" YELLOW PAINT	8" YELLOW PAINT	24" WHITE PAINT	PAINT LT ARROW	SNOW PLOWABLE MARKERS	
					HR	LS	LF	LF	LF	LF	LF	EA	EA	EA	EA	LF	LF	LF	LF	EA	EA		
R-5172	Davie	1	US 64	FROM DAVIDSON COUNTY LINE TO PAVEMENT JOINT IN FRONT OF LAKE LOUISE GOLF COURSE		*	64,883	63,677	650	260	80		6			65,500	63,700	260	80	6	398		
"		2	US 601 / US 64 VALLEY ROAD	FROM US 158 NORTH MAIN STREET TO US 64	90	*	9,280	16,302	720	75		172	4	46	8							163	
"		3	NC 801	FROM SR 1458 SPILLMAN ROAD TO PAVEMENT JOINT AT NORTH END OF I-40 TIP PROJECT		*	32,958	32,345				22										202	
"		4	US 158	FROM PAVEMENT JOINT WEST OF PEACHTREE LANE (NS) TO PAVEMENT JOINT AT OAK GROVE CHURCH ROAD SR 1642		*	86,295	97,395	950	800	230	90		14	4							580	
<b>TOTAL FOR PROJ NO. R-5172</b>					<b>90</b>	<b>1</b>	<b>193,416</b>	<b>209,719</b>	<b>2,320</b>	<b>1,135</b>	<b>230</b>	<b>364</b>	<b>4</b>	<b>66</b>	<b>12</b>	<b>8</b>	<b>65,500</b>	<b>63,700</b>	<b>260</b>	<b>80</b>	<b>6</b>	<b>1,343</b>	
TOTAL FOR PROJ NO. R-5172								212,039		1,365				86			129,200						
R-5172	Davidson	5	US 64	FROM PAVEMENT JOINT EAST OF YADKIN RIVER BRIDGE TO BRIDGE		*	947	929														8	
<b>TOTAL FOR PROJ NO. R-5172</b>						<b>1</b>	<b>947</b>	<b>929</b>															<b>8</b>
<b>GRAND TOTAL</b>					<b>90</b>	<b>1</b>	<b>194,363</b>	<b>210,648</b>	<b>2,320</b>	<b>1,135</b>	<b>230</b>	<b>364</b>	<b>4</b>	<b>66</b>	<b>12</b>	<b>8</b>	<b>65,500</b>	<b>63,700</b>	<b>260</b>	<b>80</b>	<b>6</b>	<b>1,351</b>	
GRAND TOTAL								212,968		1,365				86			129,200						

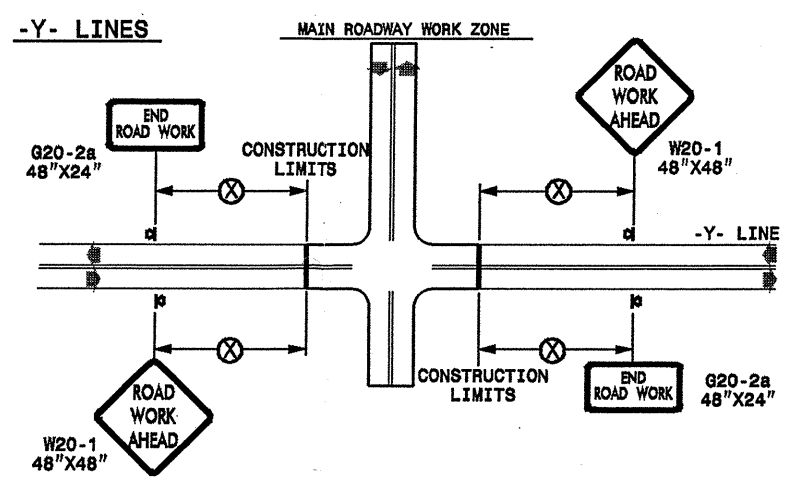
**TWO-WAY UNDIVIDED \*\* (L-LINES)**



POSTED SPEED LIMIT (M.P.H.)	RECOMMENDED MINIMUM SIGN SPACING
≤ 50	500'
≥ 55	1000'

STATE OF NORTH CAROLINA  
DEPT. OF TRANSPORTATION  
DIVISION OF HIGHWAYS  
RALEIGH, N.C.

**ROADWAYS INTERSECTING ALONG 2 WAY UNDIVIDED WORK ZONE (Y-LINES)**



DETAIL DRAWING  
FOR TWO-WAY UNDIVIDED  
WORK ZONE WARNING SIGNS

**GENERAL NOTES**

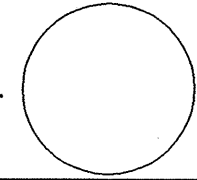

- USE FLUORESCENT ORANGE SHEETING (TYPE VII OR HIGHER) ON ALL ADVANCE WORK ZONE SIGNS.
- DO NOT INSTALL ADVANCE WARNING SIGNS MORE THAN 3 DAYS PRIOR TO BEGINNING OF WORK.
- ALL SIGN SPACING DIMENSIONS ARE APPROXIMATE, FIELD ADJUST AS NECESSARY OR AS DIRECTED.
- USE PORTABLE WORK ZONE SIGNS ONLY WITH PORTABLE WORK ZONE SIGN STANDS SPECIFICALLY DESIGNED FOR ONE ANOTHER. PORTABLE WORK ZONE SIGNS MAY BE ROLL UP OR APPROVED COMPOSITE.
- PROVIDE PORTABLE WORK ZONE SIGN STANDS, PORTABLE SIGNS AND SIGN SHEETING WHICH ARE LISTED ON THE NORTH CAROLINA DEPARTMENT OF TRANSPORTATION'S APPROVED PRODUCT LIST OR ACCEPTED AS TRAFFIC QUALIFIED BY THE TRAFFIC CONTROL UNIT.
- \*\* TWO-WAY UNDIVIDED ADVANCE WARNING SIGN CONFIGURATION MAY BE USED ON URBAN MULTI-LANE FACILITIES WHERE CONDITIONS LIMIT THE USE OF DUAL MOUNTED SIGNS AS DETERMINED BY THE ENGINEER.

**LEGEND**

◀ PORTABLE SIGN

➡ DIRECTION OF TRAFFIC FLOW

SHEET 1 OF 1

APPROVED: _____	DATE: _____	DETAIL DRAWING FOR TWO-WAY UNDIVIDED ADVANCED WORK ZONE WARNING SIGNS	
SEAL 			
SCALE: NONE		REVISIONS	
DATE: _____		7-98	10/01
DWG. BY: _____		10-98	03/04
DESIGN BY: _____		01/01	11/04
REVIEWED BY: _____	CHD	RE	

01-MAY-2009 20:44  
 sta.signing\resur\resur facing2009\dlv09\c202222-451193.st1\_r-5172.was9cr102919ix3.davidson\davle.us64etc\c202222-451193.st1\_r-5172.2wayundivurbfrwys\july2006.dgn  
 psymore AT WZ1237502