

03/08/99

TIP PROJECT: W-5001

CONTRACT: C201905

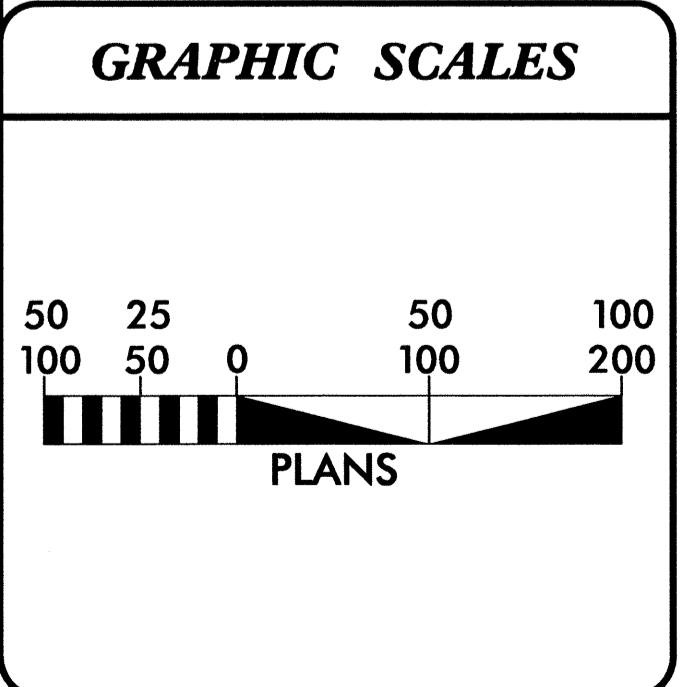
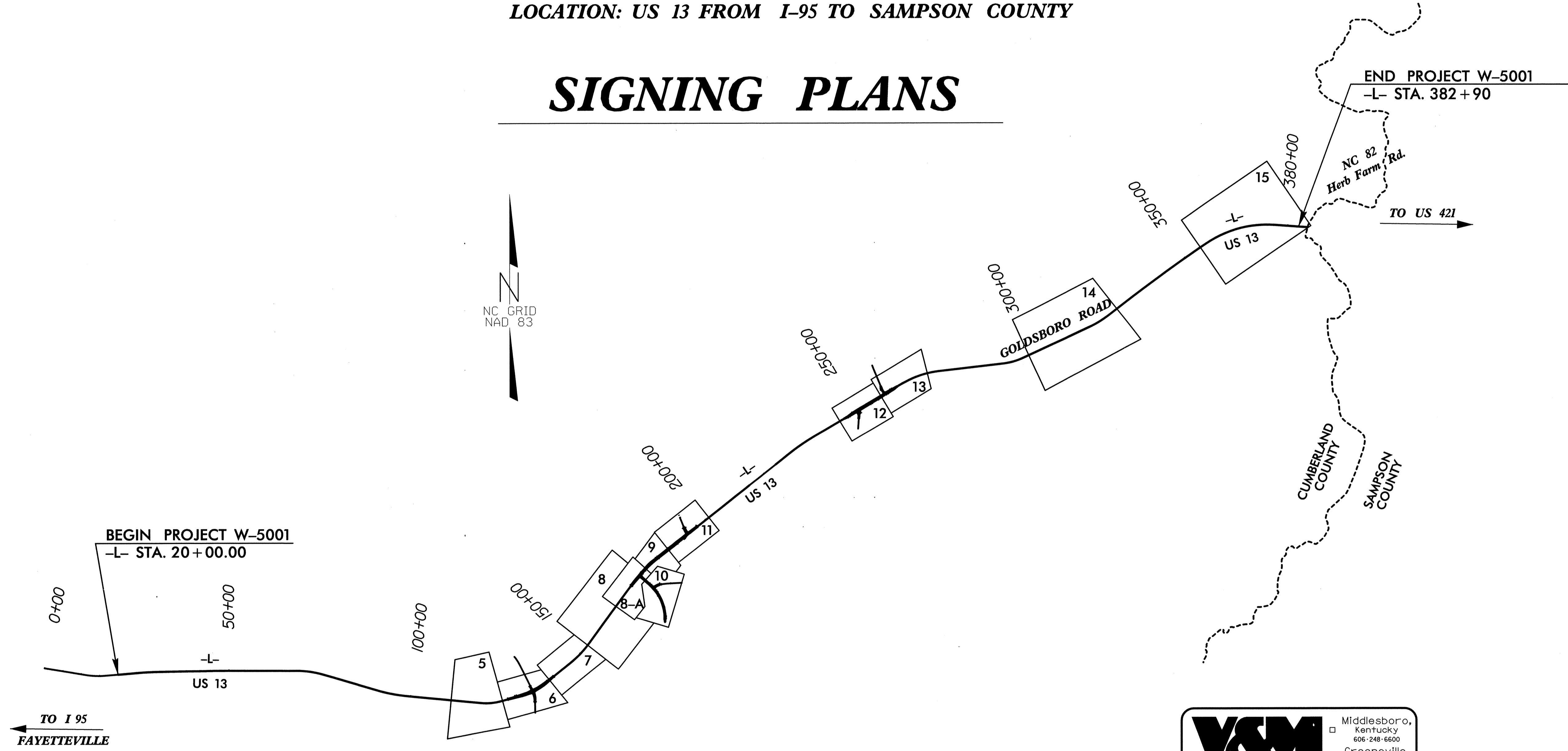
STATE OF NORTH CAROLINA
DIVISION OF HIGHWAYS

CUMBERLAND COUNTY

LOCATION: US 13 FROM I-95 TO SAMPSON COUNTY

SIGNING PLANS

STATE	STATE PROJECT REFERENCE NO.	SHEET NO.	TOTAL SHEETS
N.C.	W-5001	SIGN-1	
STATE PROJ. NO.	F.A. PROJ. NO.	DESCRIPTION	
41174.1.1	STP.13(22)	PE	
41174.2.1	STP.13(22)	RW & UTILITY	
41174.3.1	STP.13(22)	CONST.	



Prepared in the Office of:
VAUGHN & MELTON
 1318-F PATTON AVE.
 ASHEVILLE NC, 28806
 FOR THE NORTH CAROLINA DIVISION OF HIGHWAYS
 2006 STANDARD SPECIFICATIONS

REECE M. SCHULER, P.E.
 PROJECT ENGINEER

AARON C. CARVER, P.E.
 PROJECT DESIGN ENGINEER

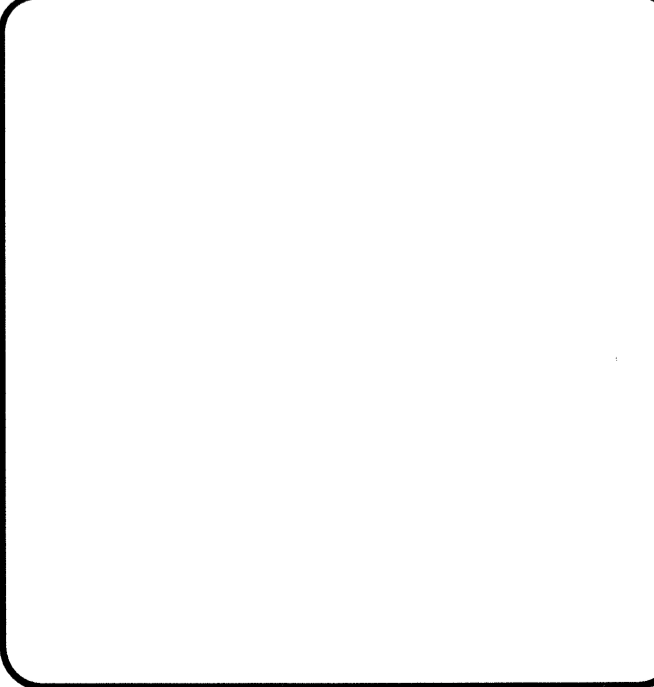
V&M
Vaughn & Melton
 Consulting Engineers

- Middlesboro, Kentucky 606-248-6600
- Greeneville, Tennessee 423-639-0271
- Asheville, North Carolina 828-253-2796

Copyright © 1994 Vaughn & Melton, Inc. All Rights Reserved.

ROADWAY DESIGN ENGINEER

[Signature] 3/24/99
 P.E.



SYSTEMS \$\$\$\$ EDG/MSR/VAM/MSR

SIGNS

SUMMARY OF QUANTITIES

ITEM NO.		ITEM DESCRIPTION	QUANTITY	UNIT
DESC. NO.	SECT. NO.			
4072000000	903	SUPPORTS, 3-LB STEEL U-CHANNEL.....	636	LF
4096000000	904	SIGN ERECTION, TYPE D.....	4	EA.
4102000000	904	SIGN ERECTION, TYPE E.....	30	EA.
4108000000	904	SIGN ERECTION, TYPE F.....	11	EA.
4155000000	907	DISPOSAL OF SIGN SYSTEM, U-CHANNEL.....	38	EA.

ROADWAY STANDARD DRAWINGS
APPLICABLE TO THIS SIGNING PLAN

901.50 903.10 1264.02
904.10 904.50

8/17/99

REVISIONS

C:\PROGRAMS\AUTOCAD\PLT\PLT2000.PLT



2/24/19

8/17/99

REVISIONS

PAY ITEM NOTES:

- | | |
|----|--|
| 1 | SIGN ERECTION, TYPE A (OVERHEAD) |
| 2 | SIGN ERECTION, TYPE B (OVERHEAD) |
| 3 | SIGN ERECTION, TYPE A (GROUND MOUNTED) |
| 4 | SIGN ERECTION, TYPE B (GROUND MOUNTED) |
| 5 | SIGN ERECTION, TYPE D, E, AND F |
| 6 | SIGN ERECTION, OVERLAY (OVERHEAD) |
| 7 | SIGN ERECTION, OVERLAY (GROUND MOUNTED) |
| 8 | SIGN ERECTION, REPOSITION OVERHEAD |
| 9 | RELOCATE SIGN, TYPE A (OVERHEAD) |
| 10 | RELOCATE SIGN, TYPE B (OVERHEAD) |
| 11 | RELOCATE SIGN, TYPE A (GROUND MOUNTED) |
| 12 | RELOCATE SIGN, TYPE B (GROUND MOUNTED) |
| 13 | RELOCATE SIGN, TYPE D |
| 14 | RELOCATE SIGN, TYPE E |
| 15 | RELOCATE SIGN, TYPE F |
| 16 | RELOCATE SIGN, MILEMARKERS |
| 17 | RELOCATE SUPPORT, OVERHEAD SIGN SYSTEM |
| 18 | RELOCATE SUPPORT, STEEL BEAM |
| 19 | RELOCATE LIGHTING SYSTEM |
| 20 | RELOCATE SUPPORT, WOOD |
| 21 | DISPOSAL OF SUPPORT, STEEL BEAM |
| 22 | DISPOSAL OF SUPPORT, WOOD |
| 23 | DISPOSAL OF SUPPORT, OVERHEAD STRUCTURE |
| 24 | DISPOSAL OF SIGN SYSTEM, OVERHEAD |
| 25 | DISPOSAL OF SIGN SYSTEM, STEEL BEAM |
| 26 | DISPOSAL OF SIGN SYSTEM, U-CHANNEL |
| 27 | DISPOSAL OF SIGN SYSTEM, WOOD |
| 28 | DISPOSAL OF SUPPORT, U-CHANNEL |
| 29 | DISPOSAL OF SIGN, A OR B (OVERHEAD) |
| 30 | DISPOSAL OF SIGN, A OR B (GROUND MOUNTED) |
| 31 | DISPOSAL OF SIGN, D, E OR F |
| 32 | DISPOSAL OF SIGN, MILEMARKERS |
| 33 | DISPOSAL OF SIGN, OVERLAY (OVERHEAD) |
| 34 | DISPOSAL OF SIGN, OVERLAY (GROUND MOUNTED) |
| 35 | DISPOSAL OF LIGHTING SYSTEM |
| 36 | DISPOSAL OF LIGHTING FIXTURES |
| 37 | DISPOSAL OF WALKWAY |
| 38 | STOCKPILE SUPPORT, STEEL BEAM |
| 39 | STOCKPILE SUPPORT, WOOD |
| 40 | STOCKPILE SUPPORT, OVERHEAD STRUCTURE |
| 41 | STOCKPILE SIGN SYSTEM, OVERHEAD |
| 42 | STOCKPILE SIGN SYSTEM, STEEL BEAM |
| 43 | STOCKPILE SIGN SYSTEM, U-CHANNEL |
| 44 | STOCKPILE SIGN SYSTEM, WOOD |
| 45 | STOCKPILE SUPPORT, U-CHANNEL |
| 46 | STOCKPILE SIGN, A OR B (OVERHEAD) |
| 47 | STOCKPILE SIGN, A OR B (GROUND MOUNTED) |
| 48 | STOCKPILE SIGN, D, E OR F |
| 49 | STOCKPILE SIGN, MILEMARKERS |
| 50 | STOCKPILE LIGHTING SYSTEM |
| 51 | STOCKPILE LIGHTING FIXTURES |
| 52 | STOCKPILE WALKWAY |

GENERAL NOTES:

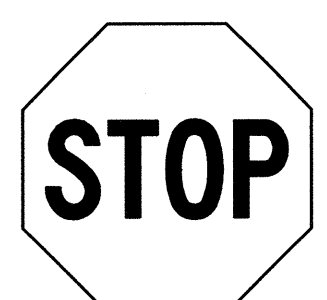
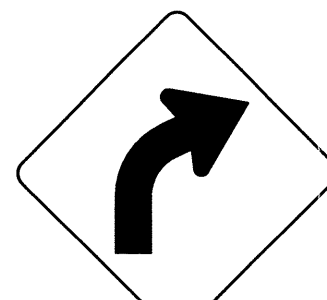
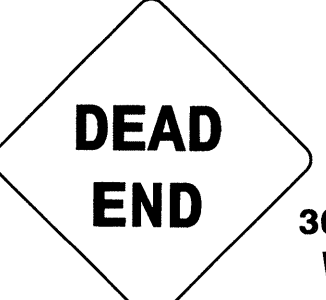

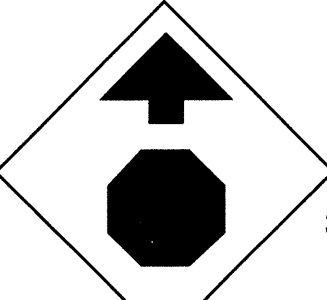
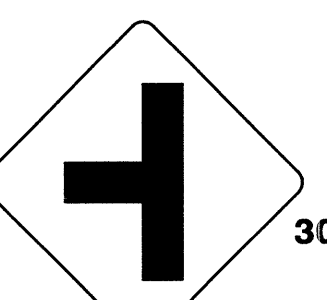
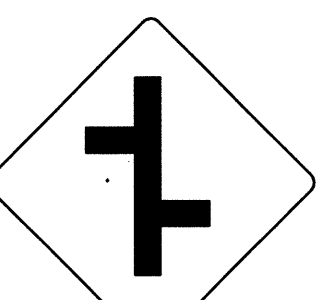
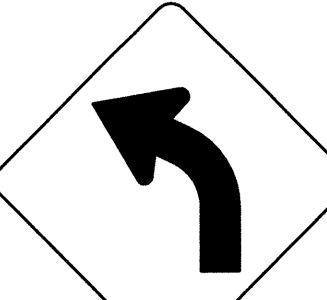
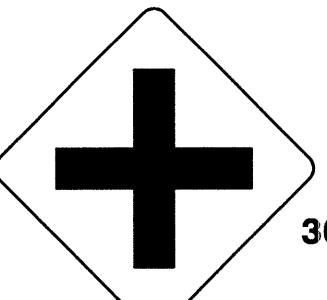
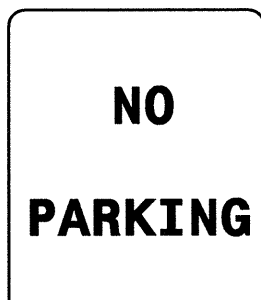
- SIGNS FURNISHED BY STATE.
- ALL TYPE 'D' SIGNS SHALL BE MOUNTED ON TWO U-CHANNEL POSTS UNLESS OTHERWISE INDICATED ON THE PLANS.
- IF REMOVAL OR RELOCATION OF SIGNS ON PRIVATE STREET (NON-STATE MAINTAINED) IS REQUIRED DUE TO CONSTRUCTION, THE CONTRACTOR SHALL INFORM THE ENGINEER. THE WORK WILL BE COMPLETED BY OTHERS.
- SIGNING PLANS DO NOT INCLUDE TEMPORARY CONSTRUCTION SIGNING OR PAVEMENT MARKINGS. SEE TRAFFIC CONTROL PLANS.
- WHEN NOT STATIONED OR DIMENSIONED ON PLANS, ALL 'E' AND 'F' SIGNS SHALL BE FIELD LOCATED BY THE ENGINEER.
- ALL EXISTING SIGNS ON 'U' CHANNEL POST WITHIN THE PROJECT LIMITS SHALL BE RETAINED UNLESS OTHERWISE NOTED ON PLANS.
- WHEN EXISTING SIGNS ARE REMOVED AND INSTALLED ON NEW SUPPORTS, THE RE-ERECTION SHALL IMMEDIATELY FOLLOW THE REMOVAL.
- THE BACKGROUND FOR TYPE E AND F SIGNS SHALL BE TYPE III REFLECTIVE SHEETING.
- THE CONTRACTOR SHALL BE REQUIRED TO SUBMIT TO THE N.C.D.O.T. FOR APPROVAL, DETAIL DRAWING OF LUMINAIRE RETRIEVAL SYSTEM MOUNTING ON OHS ASSEMBLY.

PROJECT NOTES:

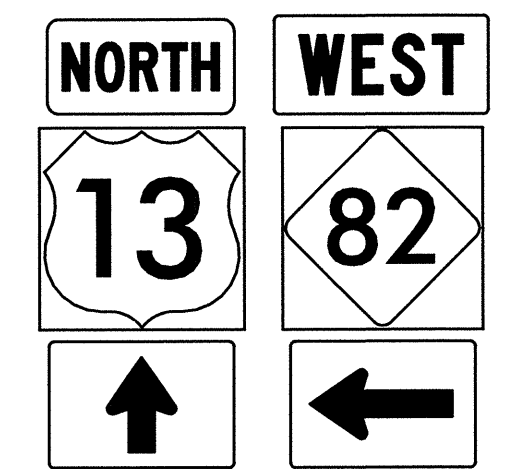

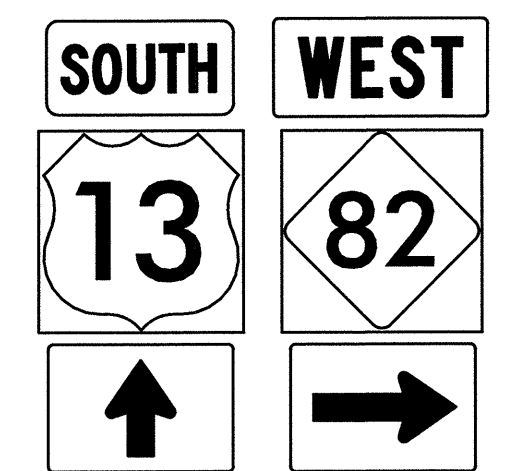
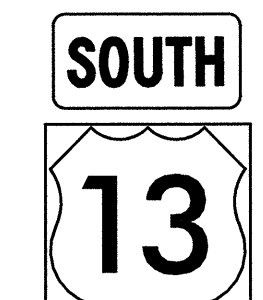
Professional Engineer
No. 28500
3/24/99

SYSTEMS DESIGN & CONSTRUCTION

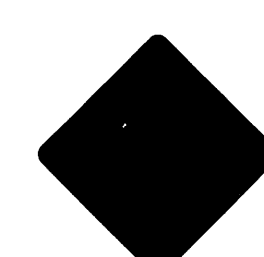
TYPE "E" SIGNS

<p>409 QUANTITY REQ'D <u>11</u></p>  <p>36 x 36 R1-1</p> <p>ONE "U" POST PER SIGN</p>	<p>444 QUANTITY REQ'D <u>3</u></p>  <p>30 x 30 W1-2R</p> <p>ONE "U" POST PER SIGN</p>	<p>465 QUANTITY REQ'D <u>1</u></p>  <p>30 x 30 W14-1</p> <p>ONE "U" POST PER SIGN</p>	<p>468 QUANTITY REQ'D <u>4</u></p>  <p>24 x 24 W13-1</p> <p>ONE "U" POST PER SIGN</p>
<p>439 QUANTITY REQ'D <u>1</u></p>  <p>36 x 36 W3-1a</p> <p>ONE "U" POST PER SIGN</p>	<p>445 QUANTITY REQ'D <u>1</u></p>  <p>30 x 30 W2-2</p> <p>ONE "U" POST PER SIGN</p>	<p>466 QUANTITY REQ'D <u>4</u></p>  <p>30 x 30</p> <p>ONE "U" POST PER SIGN</p>	
<p>443 QUANTITY REQ'D <u>3</u></p>  <p>30 x 30 W1-2L</p> <p>ONE "U" POST PER SIGN</p>	<p>448 QUANTITY REQ'D <u>2</u></p>  <p>30 x 30 W2-1</p> <p>ONE "U" POST PER SIGN</p>	<p>467 QUANTITY REQ'D <u>4</u></p>  <p>24 x 30 R8-3</p> <p>ONE "U" POST PER SIGN</p>	

TYPE "F" SIGNS

<p>501</p>  <p>1 - 24 x 12 1 - 24 x 24 1 - 20 x 15</p> <p>ONE "U" POST PER SIGN</p>	<p>503</p>  <p>3 - 24 x 12 3 - 24 x 24</p> <p>ONE "U" POST PER SIGN</p>
<p>502</p>  <p>1 - 24 x 12 1 - 24 x 24 1 - 20 x 15</p> <p>ONE "U" POST PER SIGN</p>	<p>504</p>  <p>2 - 24 x 12 2 - 24 x 24</p> <p>ONE "U" POST PER SIGN</p>

END OF ROAD MARKERS

<p>600 QUANTITY REQ'D <u>6</u></p>  <p>18 x 18 OM4-3</p> <p>ONE "U" POST PER SIGN</p>

NOTE : THIS DRAWING IS DIMENSIONED IN INCHES UNLESS OTHERWISE DEPICTED WITHIN THE DRAWING.



3/24/19

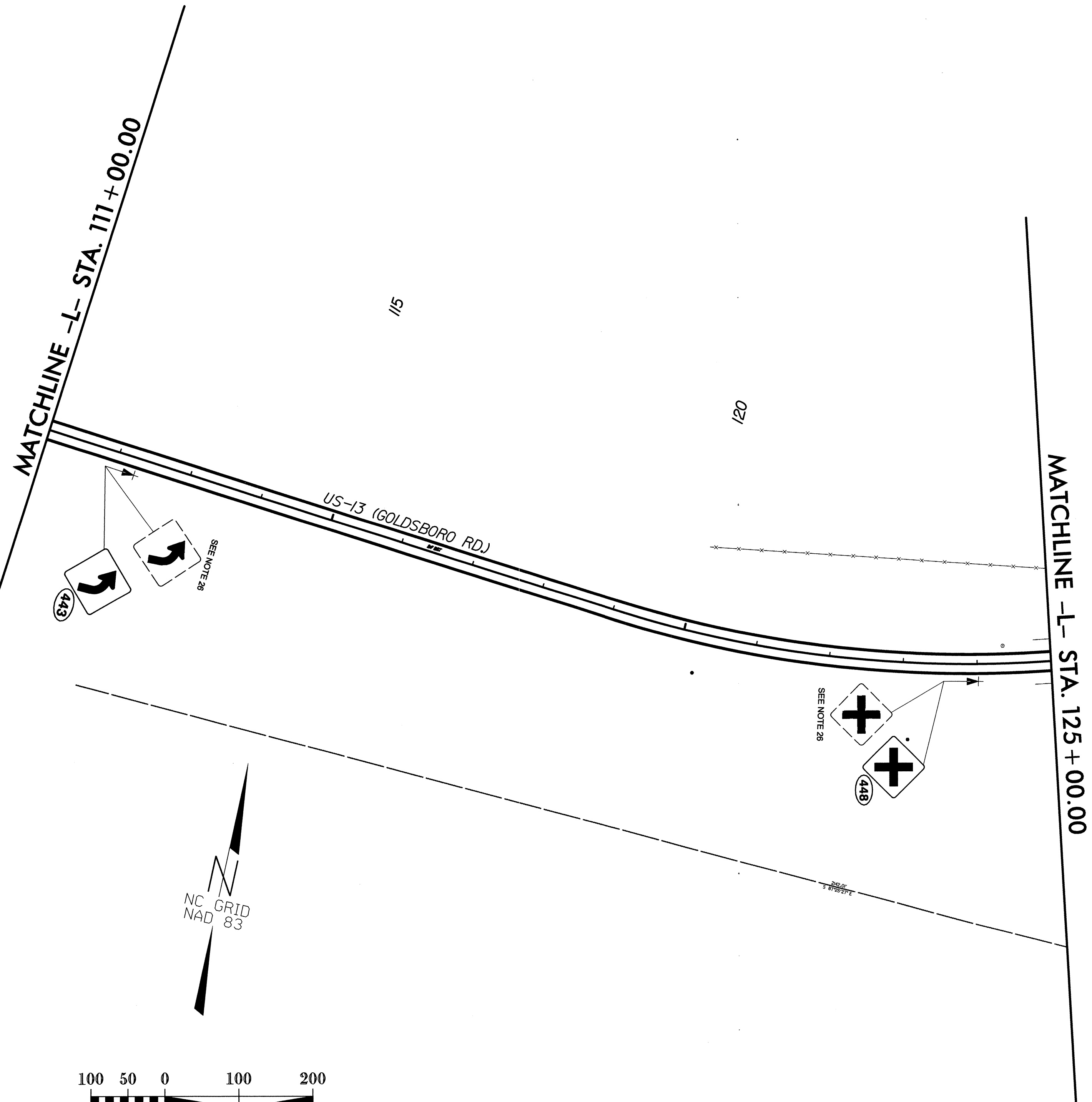
8/17/99

REVISIONS

60
59
58
57
56
55
54
53
52
51
50
49
48
47
46
45
44
43
42
41
40
39
38
37
36
35
34
33
32
31
30
29
28
27
26
25
24
23
22
21
20
19
18
17
16
15
14
13
12
11
10
9
8
7
6
5
4
3
2
1

8/17/99

REVISIONS




 H. H. H.
 3/24/09

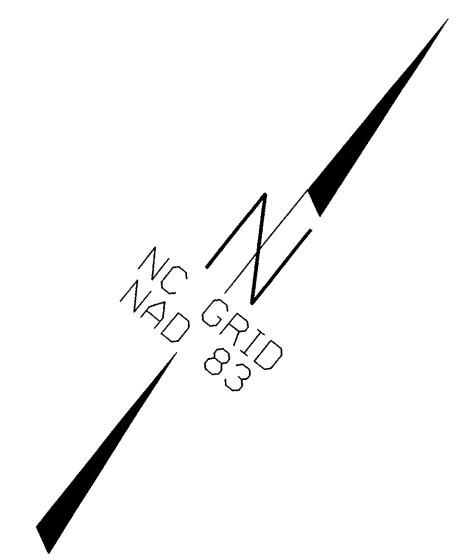
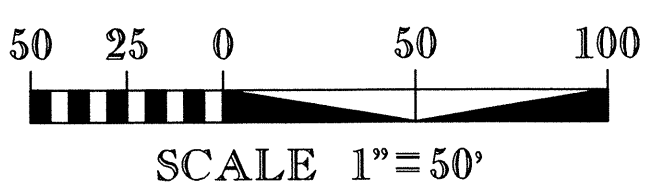
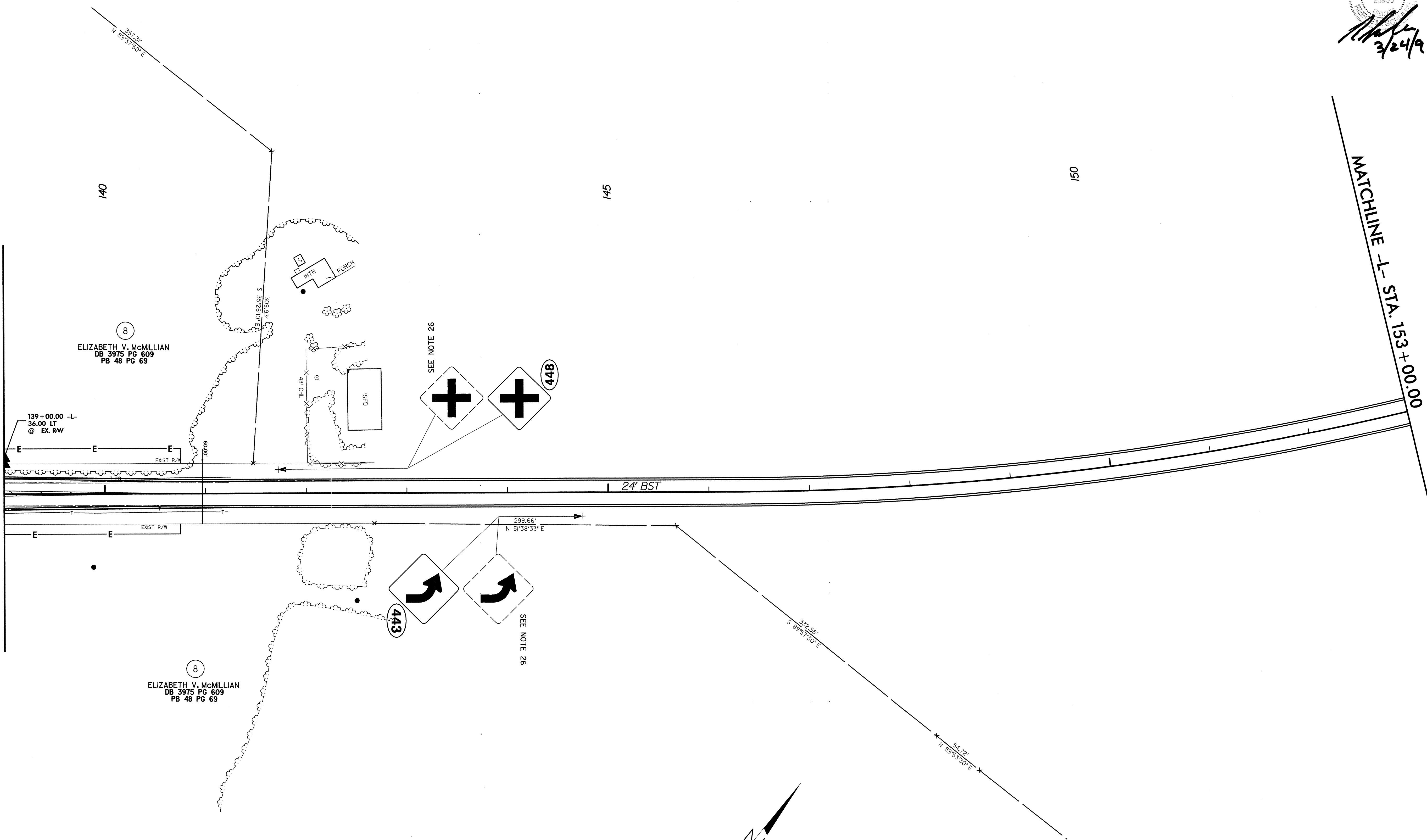

 3/24/19

8/17/99

REVISIONS

MATCHLINE -L- STA. 139 + 00.00

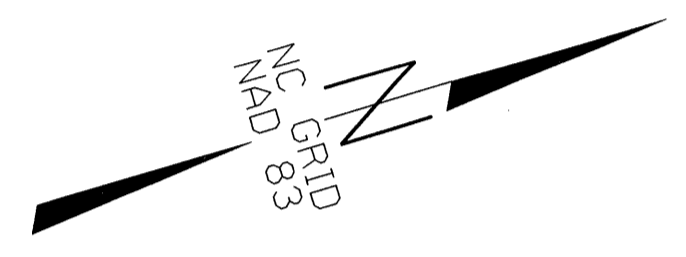
MATCHLINE -L- STA. 153 + 00.00



1
2
3
4
5
6
7
8
9
10
11
12
13
14
15
16
17
18
19
20
21
22
23
24
25
26
27
28
29
30
31
32
33
34
35
36
37
38
39
40
41
42
43
44
45
46
47
48
49
50
51
52
53
54
55
56
57
58
59
60
61
62
63
64
65
66
67
68
69
70
71
72
73
74
75
76
77
78
79
80
81
82
83
84
85
86
87
88
89
90
91
92
93
94
95
96
97
98
99
100

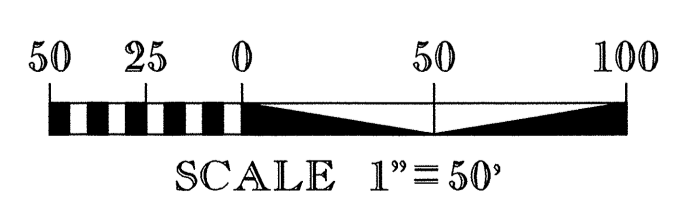
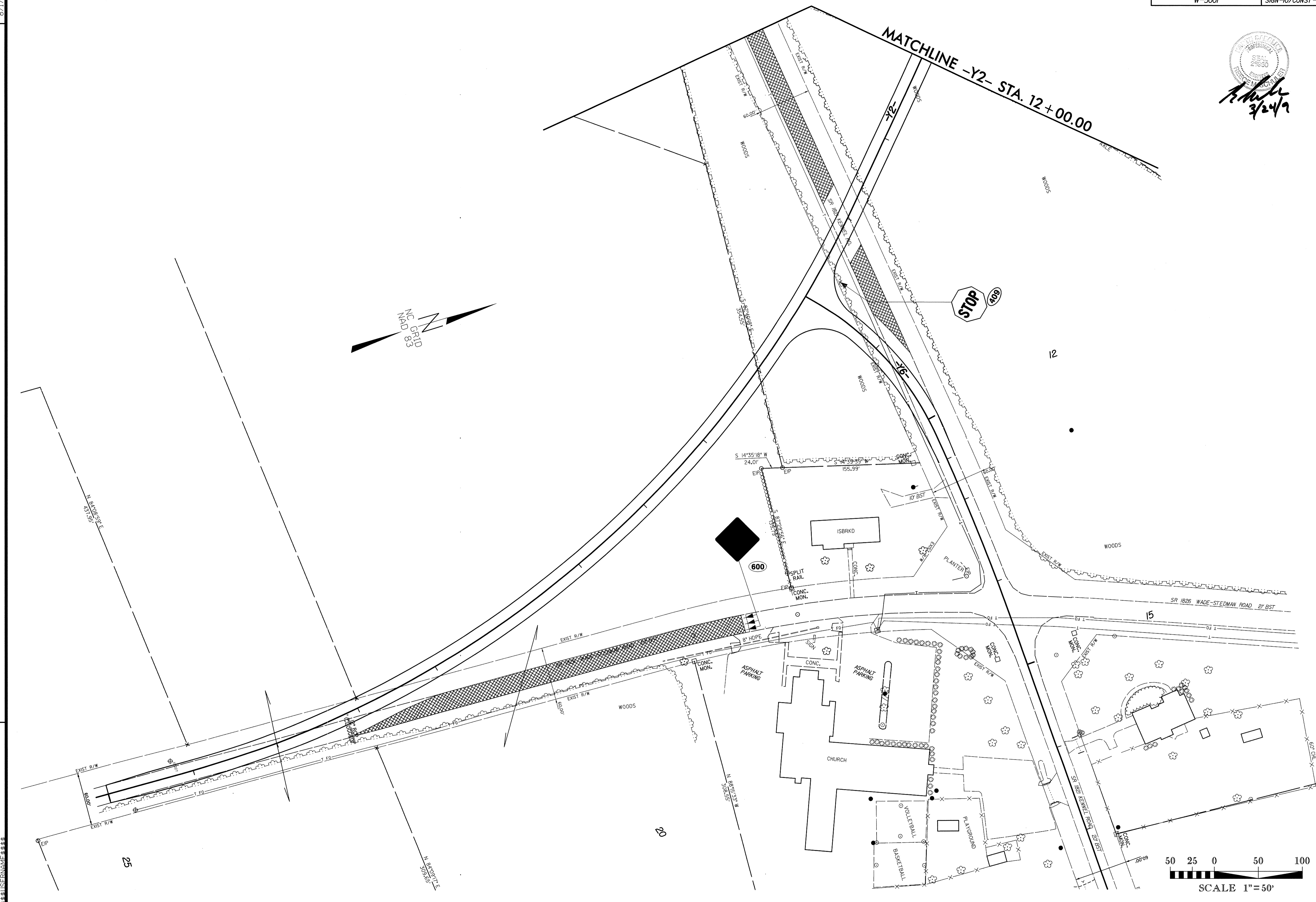
3/24/12

MATCHLINE -Y2- STA. 12+00.00



REVISIONS

8/17/99



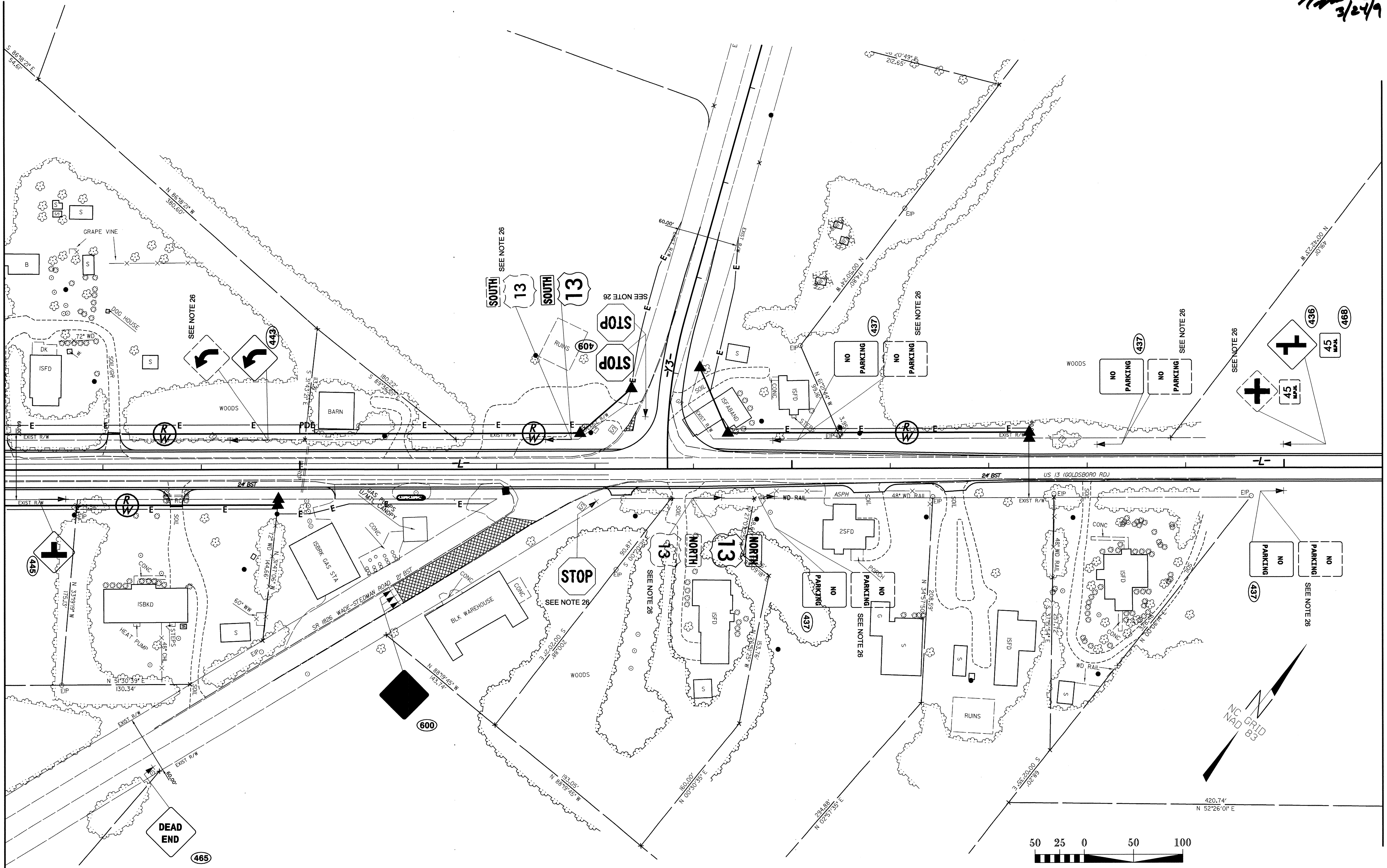


8/17/99

REVISIONS

MATCHLINE -L- STA. 187 + 00.00

MATCHLINE -L- STA. 201 + 00.00



69-00
 69-01
 69-02
 69-03
 69-04
 69-05
 69-06
 69-07
 69-08
 69-09
 69-10
 69-11
 69-12
 69-13
 69-14
 69-15
 69-16
 69-17
 69-18
 69-19
 69-20
 69-21
 69-22
 69-23
 69-24
 69-25
 69-26
 69-27
 69-28
 69-29
 69-30
 69-31
 69-32
 69-33
 69-34
 69-35
 69-36
 69-37
 69-38
 69-39
 69-40
 69-41
 69-42
 69-43
 69-44
 69-45
 69-46
 69-47
 69-48
 69-49
 69-50
 69-51
 69-52
 69-53
 69-54
 69-55
 69-56
 69-57
 69-58
 69-59
 69-60
 69-61
 69-62
 69-63
 69-64
 69-65
 69-66
 69-67
 69-68
 69-69
 69-70
 69-71
 69-72
 69-73
 69-74
 69-75
 69-76
 69-77
 69-78
 69-79
 69-80
 69-81
 69-82
 69-83
 69-84
 69-85
 69-86
 69-87
 69-88
 69-89
 69-90
 69-91
 69-92
 69-93
 69-94
 69-95
 69-96
 69-97
 69-98
 69-99
 69-100

PROJECT REFERENCE NO.	SHEET NO.
W-5001	SIGN-14/CONST-19
RW SHEET NO.	


 3/24/19

8/17/99

REVISIONS

MATCHLINE -L- STA. 300+00.00

MATCHLINE -L- STA. 327+00.00

US-13 (GOLDSBORO RD.)

305

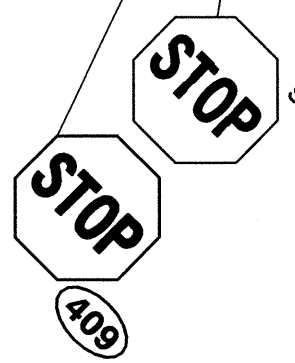
310

315

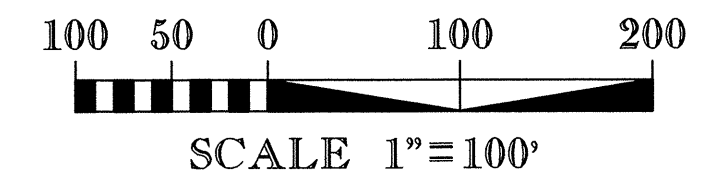
320

325

SR 102 EASON RD.
(APPROX. LOCATION)



SEE NOTE 26



SYSTEMS
 ENGINEERING
 CONSULTANTS
 P.C.

