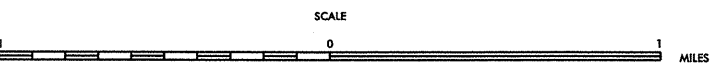


STATE	PROJECT NO.	SHEET NO.	TOTAL SHEETS
N.C.	10CR.10131.10, etc.	1	
F.A. PROJECT NO.			



ENLARGED MUNICIPAL AND SUBURBAN AREAS
CABARRUS COUNTY
 NORTH CAROLINA

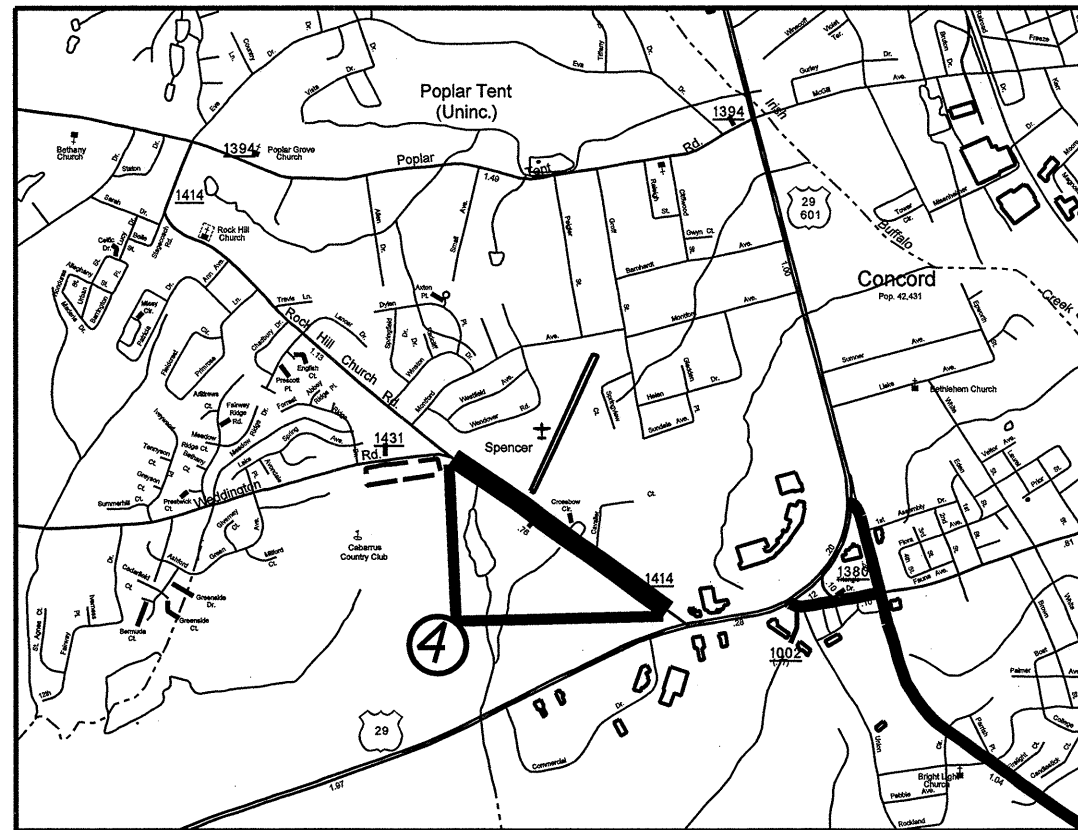
PREPARED BY THE
 NORTH CAROLINA DEPARTMENT OF TRANSPORTATION
 DIVISION OF HIGHWAYS - GIS UNIT
 IN COOPERATION WITH THE
 U.S. DEPARTMENT OF TRANSPORTATION
 FEDERAL HIGHWAY ADMINISTRATION



MAP #	ROUTE	DESCRIPTION
1	NC 3	FROM NC 73 TO BRADLEY ST.
2	NC 3	FROM PAVT. JOINT WEST OF INTERSECTION SR 2154 (LIL TEXAS RD) TO PAVT. JOINT W OF US 29
3	SR 1643 (RAINBOW DR)	FROM BETHPAGE RD TO NC 3
4	SR 1414 (ROCK HILL CHURCH RD)	FROM PVT. JOINT NORTHWEST OF US 29 TO PVT JOINT @ SR 1431 (WEDDINGTON RD)

Concord
 Pop. 42,431

STATE	PROJECT NO.	SHEET NO.	TOTAL SHEETS
N.C.	IOCR.10131.10,etc.	2	
F.A. PROJECT NO.			



ENLARGED MUNICIPAL AND SUBURBAN AREAS

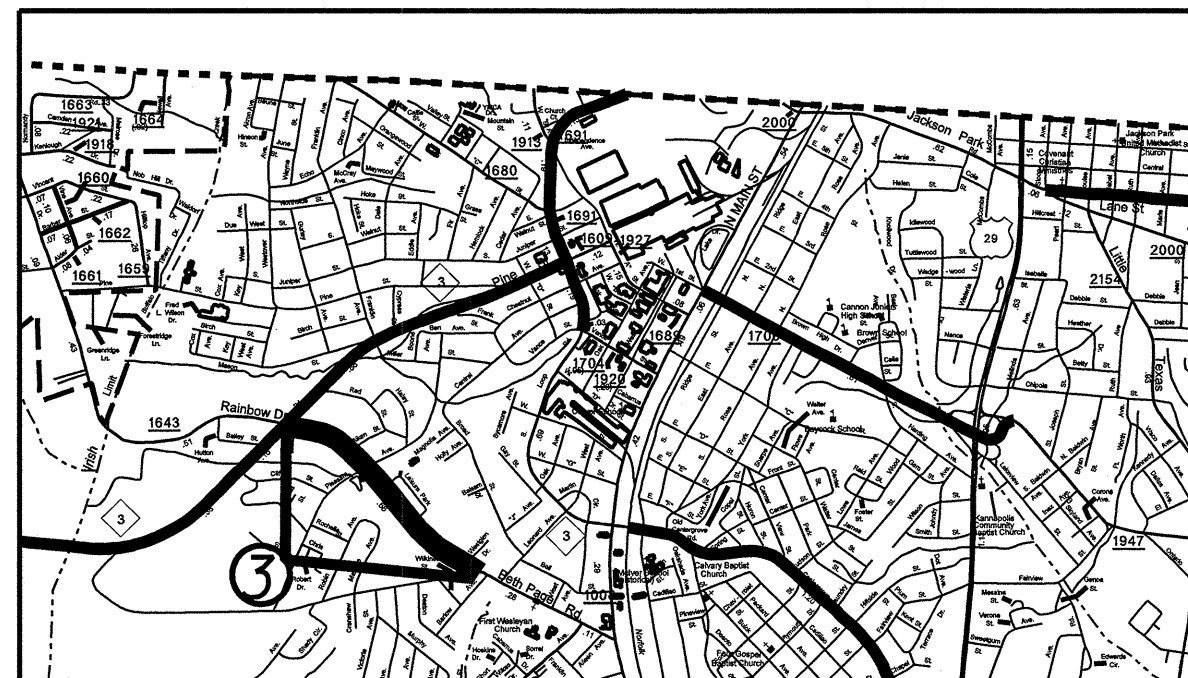
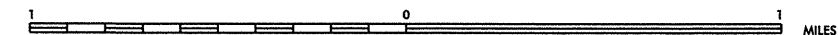
CABARRUS COUNTY

NORTH CAROLINA

PREPARED BY THE
NORTH CAROLINA DEPARTMENT OF TRANSPORTATION
DIVISION OF HIGHWAYS - GIS UNIT

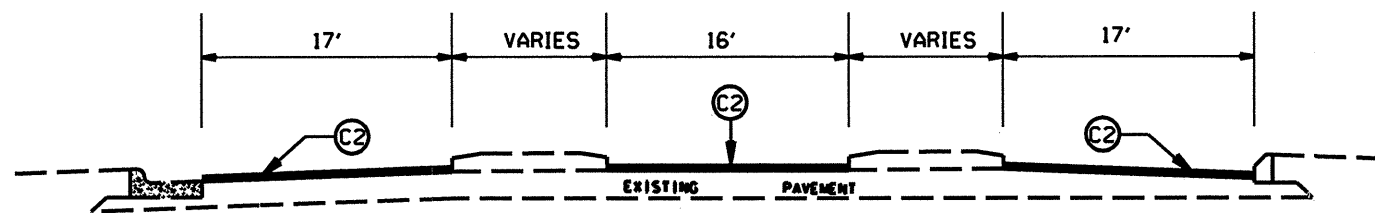
IN COOPERATION WITH THE
U.S. DEPARTMENT OF TRANSPORTATION
FEDERAL HIGHWAY ADMINISTRATION

SCALE

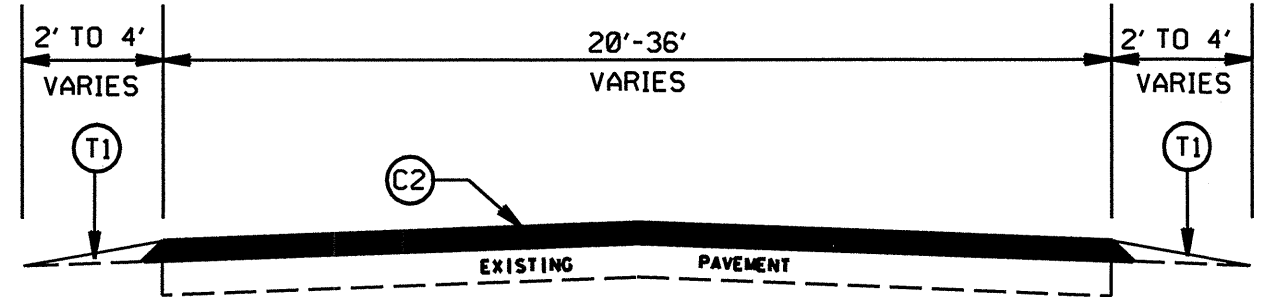
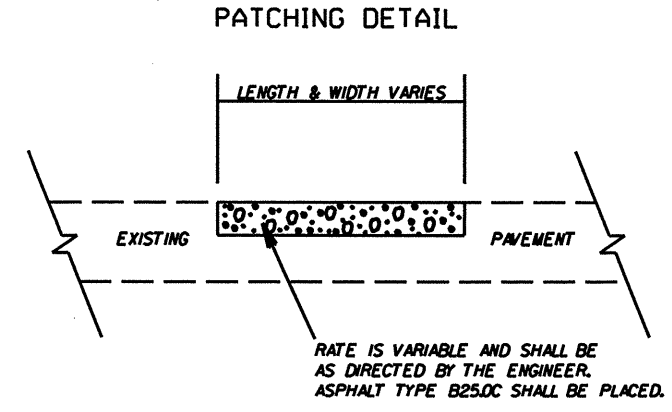


MAP #	ROUTE	DESCRIPTION
1	NC 3	FROM NC 73 TO BRADLEY ST.
2	NC 3	FROM PAVT. JOINT WEST OF INTERSECTION SR 2154 (LIL TEXAS RD) TO PAVT. JOINT W OF US 29
3	SR 1643 (RAINBOW DR)	FROM BETHPAGE RD TO NC 3
4	SR 1414 (ROCK HILL CHURCH RD)	FROM PVT. JOINT NORTHWEST OF US 29 TO PVT JOINT @ SR 1431 (WEDDINGTON RD)

STATE	PROJECT NO.	SHEET NO.	TOTAL SHEETS
N.C.	10CR.10131.10, etc.	4	
F.A. PROJECT NO.			

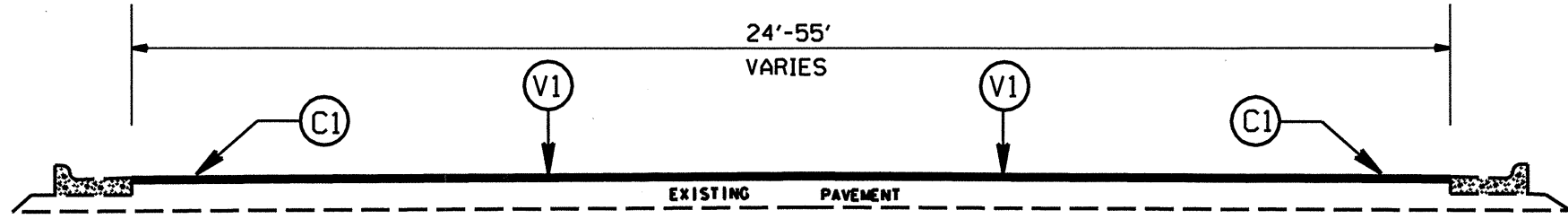


TYPICAL SECTION NO. 6



TYPICAL SECTION NO. 5

PAVEMENT SCHEDULE	
C1	PROP. APPROX. 1.5" ASPHALT CONCRETE SURFACE COURSE, TYPE S9.5C, AT AN AVERAGE RATE OF 168 LBS. PER SQ. YD.
C2	PROP. APPROX. 1.5" ASPHALT CONCRETE SURFACE COURSE, TYPE S9.5B, AT AN AVERAGE RATE OF 168 LBS. PER SQ. YD.
D1	PROP. APPROX. 2.5" ASPHALT CONCRETE INTERMEDIATE COURSE, TYPE I19.0C, AT AN AVERAGE RATE OF 285 LBS. PER SQ. YD.
T1	SHOULDER RECONSTRUCTION
V1	MILLING BITUMINOUS PAVEMENT. 1.5" DEPTH.
X1	PROFILE MILLING BITUMINOUS PAVEMENT, 0" TO 1.5" DEPTH.

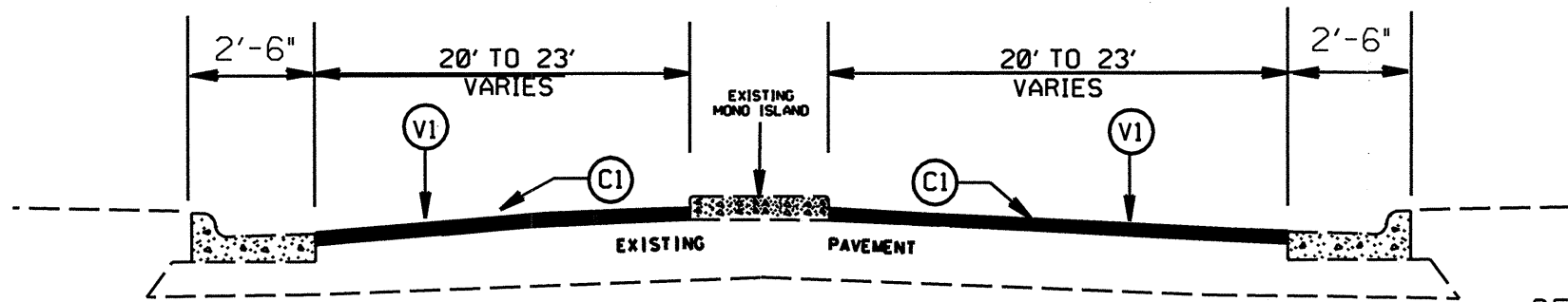


TYPICAL SECTION NO. 4

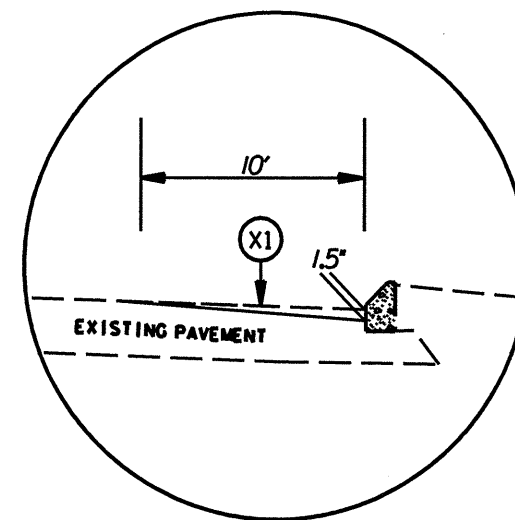
**CABARRUS COUNTY
RESURFACING 2009**

SCALE	-NA-		REVISIONS
DATE	4/07		
DRG. BY	JDA		
DESIGN BY	JDA		
APPROVED	MPU		

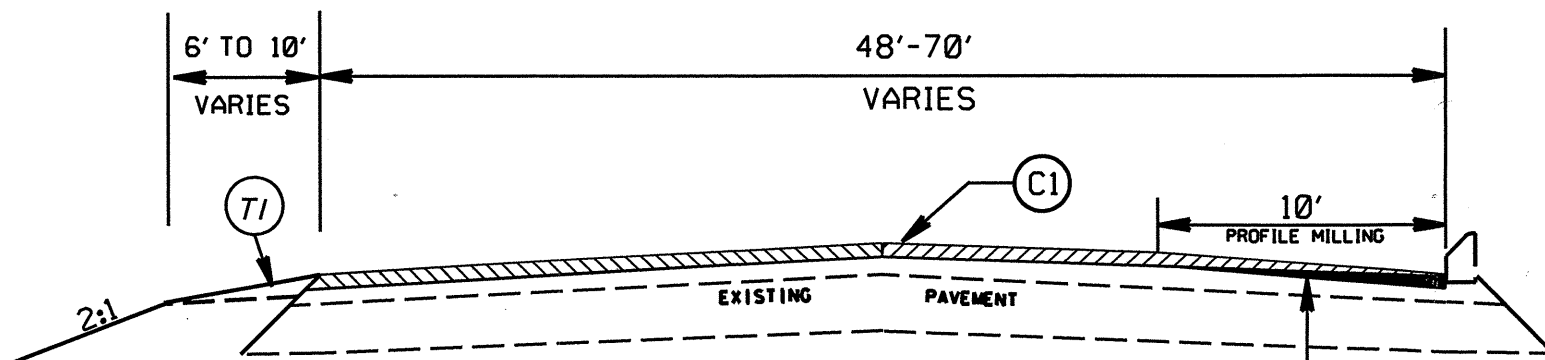
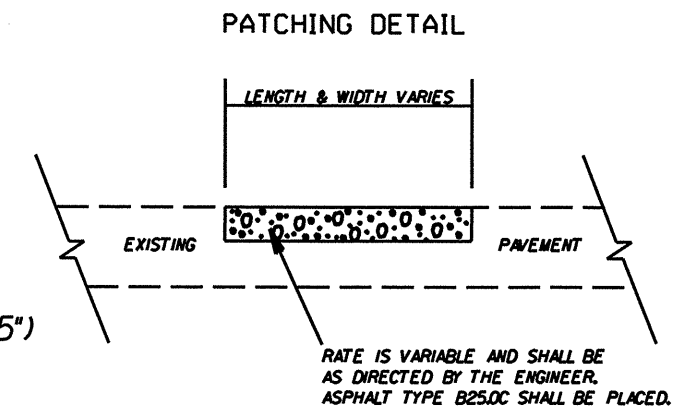
STATE	PROJECT NO.	SHEET NO.	TOTAL SHEETS
N.C.	10CR.10131.10,etc.	3	
F.A. PROJECT NO.			



TYPICAL SECTION NO. 3

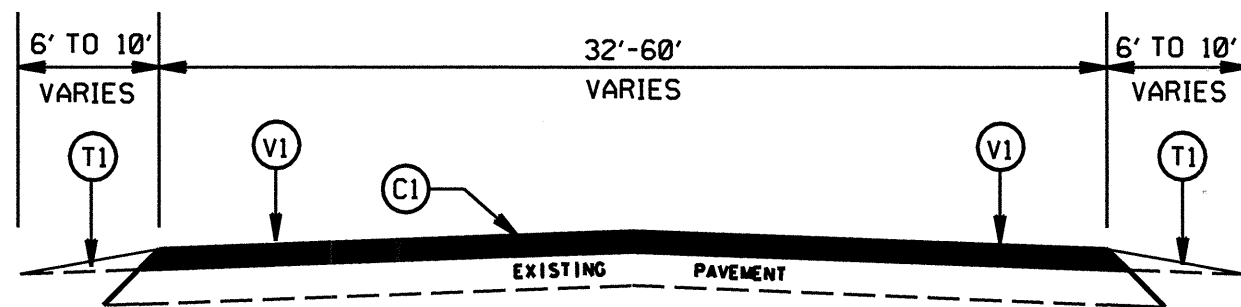


DETAIL FOR PROFILE MILLING (0" TO 1.5")



TYPICAL SECTION NO. 2

PAVEMENT SCHEDULE	
C1	PROP. APPROX. 1.5" ASPHALT CONCRETE SURFACE COURSE, TYPE S9.5C, AT AN AVERAGE RATE OF 168 LBS. PER SQ. YD.
C2	PROP. APPROX. 1.5" ASPHALT CONCRETE SURFACE COURSE, TYPE S9.5B, AT AN AVERAGE RATE OF 168 LBS. PER SQ. YD.
D1	PROP. APPROX. 2.5" ASPHALT CONCRETE INTERMEDIATE COURSE, TYPE I19.0C, AT AN AVERAGE RATE OF 285 LBS. PER SQ. YD.
T1	SHOULDER RECONSTRUCTION
V1	MILLING BITUMINOUS PAVEMENT. 1.5" DEPTH.
X1	PROFILE MILLING BITUMINOUS PAVEMENT, 0" TO 1.5" DEPTH.



TYPICAL SECTION NO. 1

CABARRUS COUNTY
RESURFACING 2009

SCALE	-NA-		REVISIONS
DATE	4/07		
DWG. BY	JDA		
DESIGN BY	JDA		
APPROVED	MPH		

PROJECT NO.	SHEET NO.	TOTAL NO.
10CR.10131.10, 10CR.20131.43, ETC.	5	

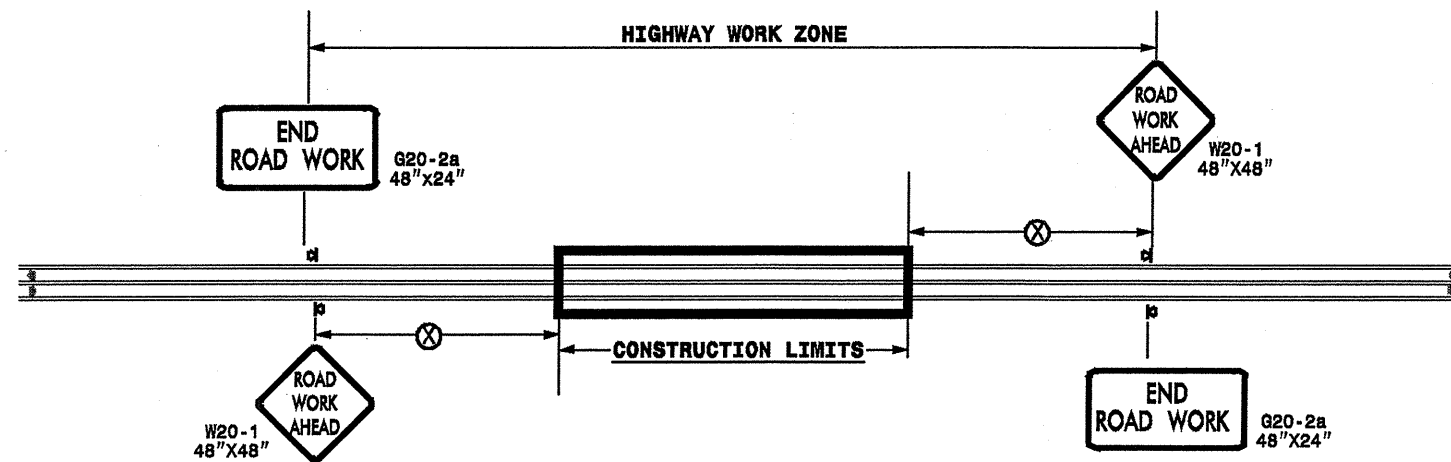
SUMMARY OF QUANTITIES

PROJECT NO	COUNTY	MAP NO	ROUTE	DESCRIPTION	TYP NO	FINAL SURFACE TESTING REQUIRED	LENGTH MI	WIDTH FT	INCIDENTAL STONE BASE TONS	SHOULDER RECONSTRUCTION SMI	1/2" MILLING SY	0" TO 1.5" MILLING SY	INCIDENTAL MILLING SY	SURFACE COURSE, S9.5B TONS	LEVELING COURSE, S9.5B TONS	SURFACE COURSE, S9.5C TONS	LEVELING COURSE, S9.5C TONS	PG 64-22 PLANT MIX TONS	PG 70-22 PLANT MIX TONS	PATCHING EXISTING PAVEMENT TONS	ADJ. OF CATCH BASIN EA	ADJ. OF MANHOLES EA	ADJ. OF METER OR VALVE BOX EA	SEED & MULCHING AC
10CR.10131.10	Cabarrus	1	NC 3	FROM NC 73 TO BRADLEY STREET	1,2	NO	2.5	32		5	41,389	700				5,048	956		360	956	1	4	6	3.0
TOTAL FOR MAP NO. 1							2.5			5	41,389	700				5,048	956		360	956	1	4	6	3.0
TOTAL FOR PROJ NO. 10CR.10131.10							2.5			5	41,389	700				5,048	956		360	956	1	4	6	3.0
10CR.10131.11	Cabarrus	2	NC 3	FROM PAVT. JT. W. OF INTER.SR 2154 (LIL TEXAS RD.) TO PAVT. JT. W. OF US 29	3,4	NO	0.65	44	33		17,500					1,694	105		108	171	1	16	5	
TOTAL FOR MAP NO. 2							0.65		33	0	17,500					1,694	105		108	171	1	16	5	
TOTAL FOR PROJ NO. 10CR.10131.11							0.65		33	0	17,500					1,694	105		108	171	1	16	5	
10CR.20131.43	Cabarrus	3	SR 1643 (RAINBOW DR.)	FROM BETHPAGE RD TO NC 3	5,6	NO	0.65	20	33	1.3			260	729	242			59		383		8	2	0.8
TOTAL FOR MAP NO. 3							0.65		33	1.3			260	729	242			59		383		8	2	0.8
TOTAL FOR PROJ NO. 10CR.20131.43							0.65		33	1.3			260	729	242			59		383		8	2	0.8
10CR.20131.44	Cabarrus	4	SR 1414 (ROCK HILL CH. RD)	FROM PAVT. JT NORTHWEST OF US 29 TO PAVT. JT @ SR 1431(WEDDINGTON RD)	5	NO	0.65	22	33	1.3			165	902	238			70		238			1	0.8
TOTAL FOR MAP NO. 4							0.65		33	1.3			165	902	238			70		238			1	0.8
TOTAL FOR PROJ NO. 10CR.20131.44							0.65		33	1.3			165	902	238			70		238			1	0.8
GRAND TOTAL							4.45		99	7.6	58,889	700	425	1,631	480	6,742	1,061	129	468	1,748	2	28	14	4.6

THERMOPLASTIC AND PAINT QUANTITIES

PROJECT NO	COUNTY	MAP NO	ROUTE	DESCRIPTION	4685000000-E										4725000000-E					4810000000-E					4820000000-E					4835000000-E					4840000000-N					4900000000-N	
					4" X 90 M WHITE THERMO	4" X 120 M YELLOW THERMO	4" X 120 M WHITE THERMO	8" X 90 M YELLOW THERMO	24" X 120 M WHITE THERMO	THERMO MSG ONLY 120 M	THERMO LT ARROW 90 M EA	THERMO STR ARROW 90 M EA	THERMO RT ARROW 90 M	THERMO STR & RT ARROW 90 M EA	THERMO STR & LT ARROW 90 M EA	4" WHITE PAINT	4" YELLOW PAINT	8" YELLOW PAINT	24" WHITE PAINT	PAINT MSG ONLY	PAINT LT ARROW	PAINT STR ARROW	PAINT RT ARROW	PAINT STR & RT ARROW	PAINT STR & LT ARROW EA	YELLOW & RED MARKERS EA	CRYSTAL & RED MARKERS EA														
10CR.10131.10	Cabarrus	1	NC 3	FROM NC 73 TO BRADLEY STREET	26,900	18,610	2,250	880	320	8	32	4	11	3		2,250	18,610	880	320	8	32	4	11	3							670	200									
TOTAL FOR MAP NO. 1					26,900	18,610	2,250	880	320	8	32	4	11	3		2,250	18,610	880	320	8	32	4	11	3						670	200										
TOTAL FOR PROJ NO. 10CR.10131.10					26,900	18,610	2,250	880	320	8	32	4	11	3		2,250	18,610	880	320	8	32	4	11	3						670	200										
						20,860								50		20,860														870											
10CR.10131.11	Cabarrus	2	NC 3	FROM PAVT. JT. W. OF INTER.SR 2154 (LIL TEXAS RD.) TO PAVT. JT. W. OF US 29		6,864	1,115	100	260					4	4	1,115	6,864		260										4	4	100	200									
TOTAL FOR MAP NO. 2						6,864	1,115	100	260					4	4	1,115	6,864		260										4	4	100	200									
TOTAL FOR PROJ NO. 10CR.10131.11						6,864	1,115	100	260					4	4	1,115	6,864		260										4	4	100	200									
						7,979								8		7,979												8			300										
10CR.20131.43	Cabarrus	3	SR 1643 (RAINBOW DR.)	FROM BETHPAGE RD TO NC 3	6,994	4,290			50																						43										
TOTAL FOR MAP NO. 3					6,994	4,290			50																							43									
TOTAL FOR PROJ NO. 10CR.20131.43					6,994	4,290			50																							43									
						4,290																										43									
10CR.20131.44	Cabarrus	4	SR 1414 (ROCK HILL CH. RD)	FROM PAVT. JT NORTHWEST OF US 29 TO PAVT. JT @ SR 1431(WEDDINGTON RD)	6,994	4,290					4																														
TOTAL FOR MAP NO. 4					6,994	4,290					4																														
TOTAL FOR PROJ NO. 10CR.20131.44					6,994	4,290					4																														
						4,290								4																											
GRAND TOTAL					40,888	34,054	3,365	980	630	8	36	4	11	7	4	3,365	25,474	880	580	8	32	4	11	7	4				813	400											
						37,419								62		28,839				58											1,213										

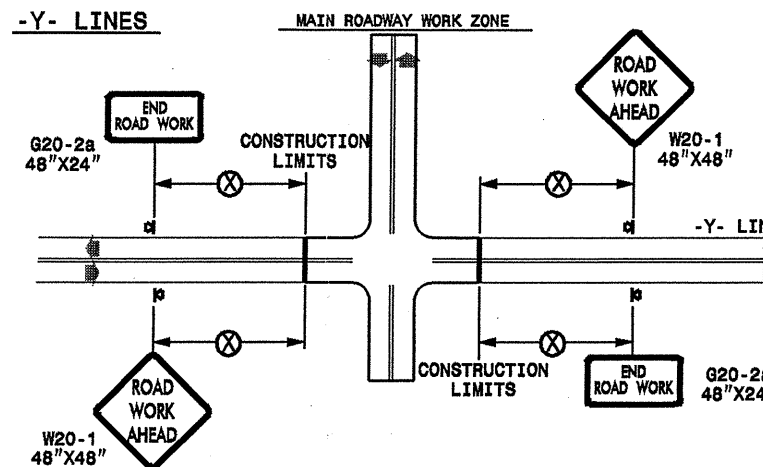
TWO-WAY UNDIVIDED ** (L-LINES)



POSTED SPEED LIMIT (M.P.H.)	RECOMMENDED MINIMUM SIGN SPACING
≤ 50	500'
≥ 55	1000'

STATE OF NORTH CAROLINA
DEPT. OF TRANSPORTATION
DIVISION OF HIGHWAYS
RALEIGH, N.C.

ROADWAYS INTERSECTING ALONG 2 WAY UNDIVIDED WORK ZONE (Y-LINES)



GENERAL NOTES

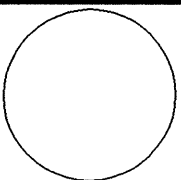
- USE FLUORESCENT ORANGE SHEETING (TYPE VII OR HIGHER) ON ALL ADVANCE WORK ZONE SIGNS.
- DO NOT INSTALL ADVANCE WARNING SIGNS MORE THAN 3 DAYS PRIOR TO BEGINNING OF WORK.
- ALL SIGN SPACING DIMENSIONS ARE APPROXIMATE, FIELD ADJUST AS NECESSARY OR AS DIRECTED.
- USE PORTABLE WORK ZONE SIGNS ONLY WITH PORTABLE WORK ZONE SIGN STANDS SPECIFICALLY DESIGNED FOR ONE ANOTHER. PORTABLE WORK ZONE SIGNS MAY BE ROLL UP OR APPROVED COMPOSITE.
- PROVIDE PORTABLE WORK ZONE STANDS, PORTABLE SIGNS AND SIGN SHEETING WHICH ARE LISTED ON THE NORTH CAROLINA DEPARTMENT OF TRANSPORTATION'S APPROVED PRODUCT LIST OR ACCEPTED AS TRAFFIC QUALIFIED BY THE TRAFFIC CONTROL UNIT.
- ** TWO-WAY UNDIVIDED ADVANCE WARNING SIGN CONFIGURATION MAY BE USED ON URBAN MULTI-LANE FACILITIES WHERE CONDITIONS LIMIT THE USE OF DUAL MOUNTED SIGNS AS DETERMINED BY THE ENGINEER.

DETAIL DRAWING
FOR TWO-WAY UNDIVIDED
WORK ZONE WARNING SIGNS

LEGEND

- ◀ PORTABLE SIGN
- ➔ DIRECTION OF TRAFFIC FLOW

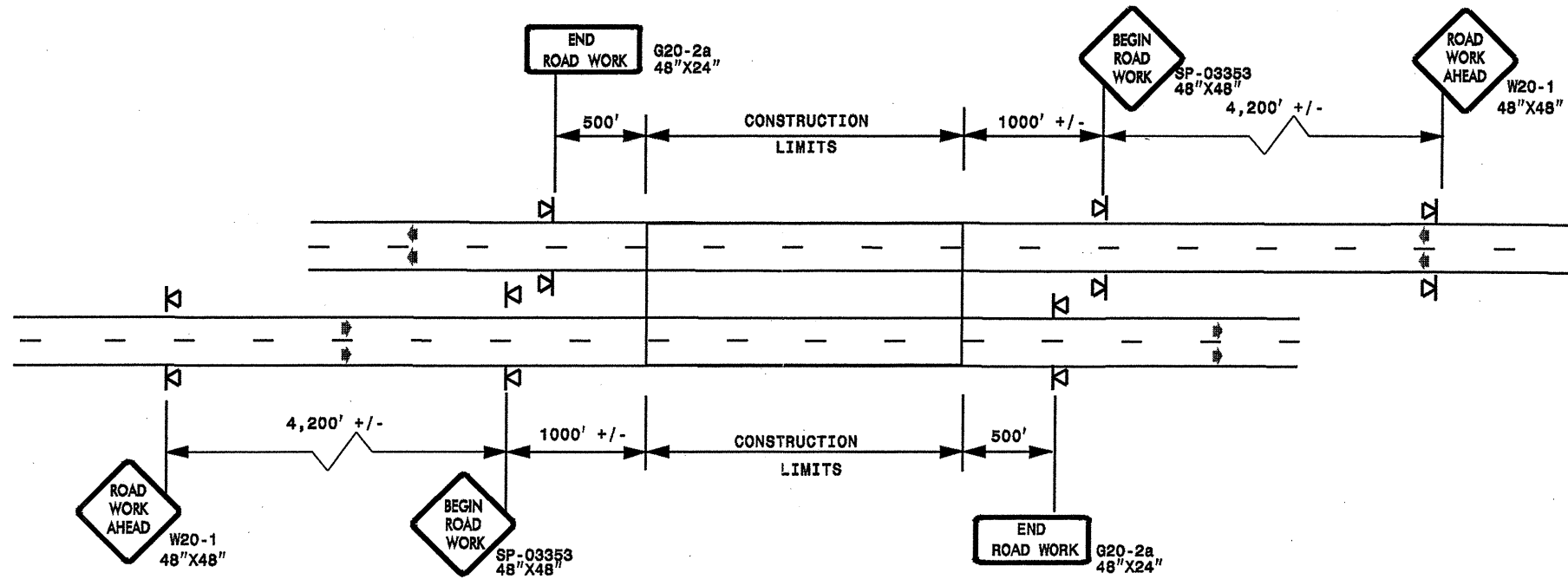
SHEET 1 OF 1

APPROVED: _____	DATE: _____	DETAIL DRAWING FOR TWO-WAY UNDIVIDED ADVANCED WORK ZONE WARNING SIGNS	
SEAL 	SCALE: NONE	REVISIONS	
	DATE: 7-98	10/01	
	DWG. BY: _____	10-98	08/04
	DESIGN BY: _____	01/01	11/04
REVIEWED BY: _____			

03-MAY-2009 17:28 sa\signing\rest AT W:\10337502

ADVANCE WORK ZONE WARNING SIGNING FOR FREEWAYS (4 LANES OR GREATER)

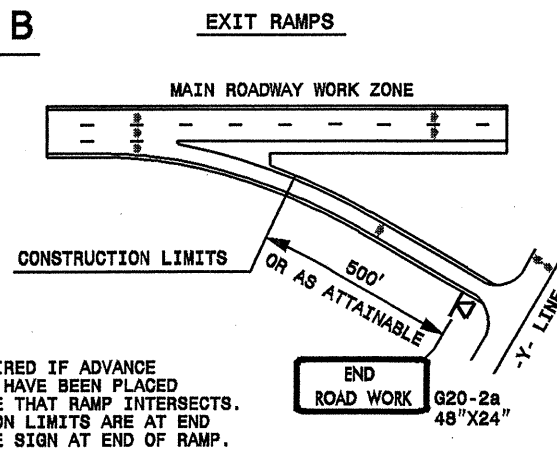
DETAIL A



STATE OF NORTH CAROLINA
DEPT. OF TRANSPORTATION
DIVISION OF HIGHWAYS
RALEIGH, N.C.

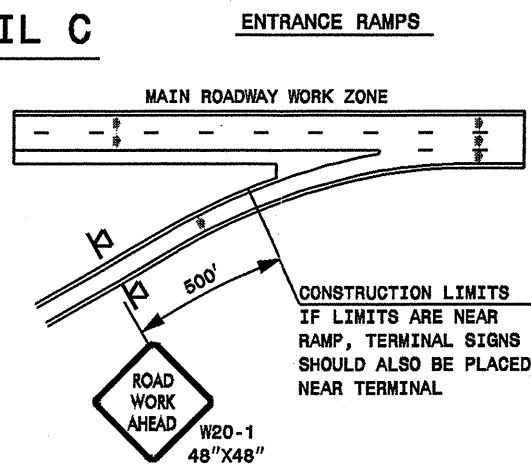
ROADWAYS INTERSECTING ALONG FREEWAY WORK ZONE (Y-LINES)

DETAIL B



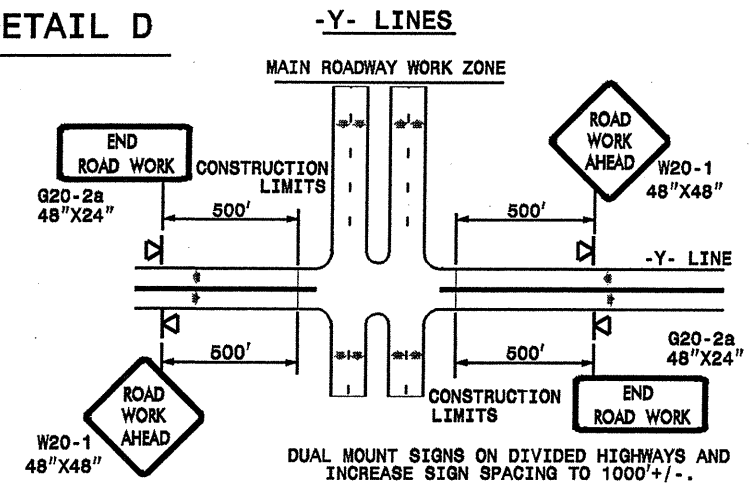
NOTE:
SIGN NOT REQUIRED IF ADVANCE WARNING SIGNS HAVE BEEN PLACED ALONG -Y- LINE THAT RAMP INTERSECTS. IF CONSTRUCTION LIMITS ARE AT END OF RAMP, PLACE SIGN AT END OF RAMP.

DETAIL C



CONSTRUCTION LIMITS IF LIMITS ARE NEAR RAMP, TERMINAL SIGNS SHOULD ALSO BE PLACED NEAR TERMINAL

DETAIL D



GENERAL NOTES

- USE FLUORESCENT ORANGE SHEETING (TYPE VII OR HIGHER) ON ALL ADVANCE WORK ZONE SIGNS.
- DO NOT INSTALL ADVANCE WARNING SIGNS MORE THAN 3 DAYS PRIOR TO BEGINNING OF WORK.
- ALL SIGN SPACING DIMENSIONS ARE APPROXIMATE, FIELD ADJUST AS NECESSARY OR AS DIRECTED.
- USE PORTABLE WORK ZONE SIGNS ONLY WITH PORTABLE WORK ZONE SIGN STANDS SPECIFICALLY DESIGNED FOR ONE ANOTHER. PORTABLE WORK ZONE SIGNS MAY BE ROLL UP OR APPROVED COMPOSITE.
- PROVIDE PORTABLE WORK ZONE SIGN STANDS, PORTABLE SIGNS AND SIGN SHEETING WHICH ARE LISTED ON THE NORTH CAROLINA DEPARTMENT OF TRANSPORTATION'S APPROVED PRODUCT LIST OR ACCEPTED AS TRAFFIC QUALIFIED BY THE TRAFFIC CONTROL UNIT.
- ** TWO-WAY UNDIVIDED ADVANCE WARNING SIGN CONFIGURATION MAY BE USED ON MULTI-LANE FACILITIES WHERE CONDITIONS LIMIT THE USE OF DUAL MOUNTED SIGNS AS DETERMINED BY THE ENGINEER.

LEGEND

- PORTABLE SIGN
- DIRECTION OF TRAFFIC FLOW

SHEET 1 OF 1

DETAIL DRAWING
FOR FREEWAYS
WORK ZONE WARNING SIGNS
(SHORT-DURATION LANE CLOSURES)

APPROVED: _____ DATE: _____	DETAIL DRAWING FOR FREEWAYS WORK ZONE WARNING SIGNS	SCALE: NONE	REVISIONS
SEAL		DATE: 7-98 DWG. BY: DESIGN BY: REVIEWED BY:	10/01 03/04 01/01 11/04

03-MAY-2009 17:31
 s:\signing\resurfacing\030509\resurfacing2009\div10\c202350_10cr101310x4_cabarrus.nc3-sr\s\c202350_10cr101310x4_cabarrus.nc3-sr\s\c202350_10cr101310x4_cabarrus.free4lanesgreatJuly2006_portable.dgn
 peymore AT WZ1237502