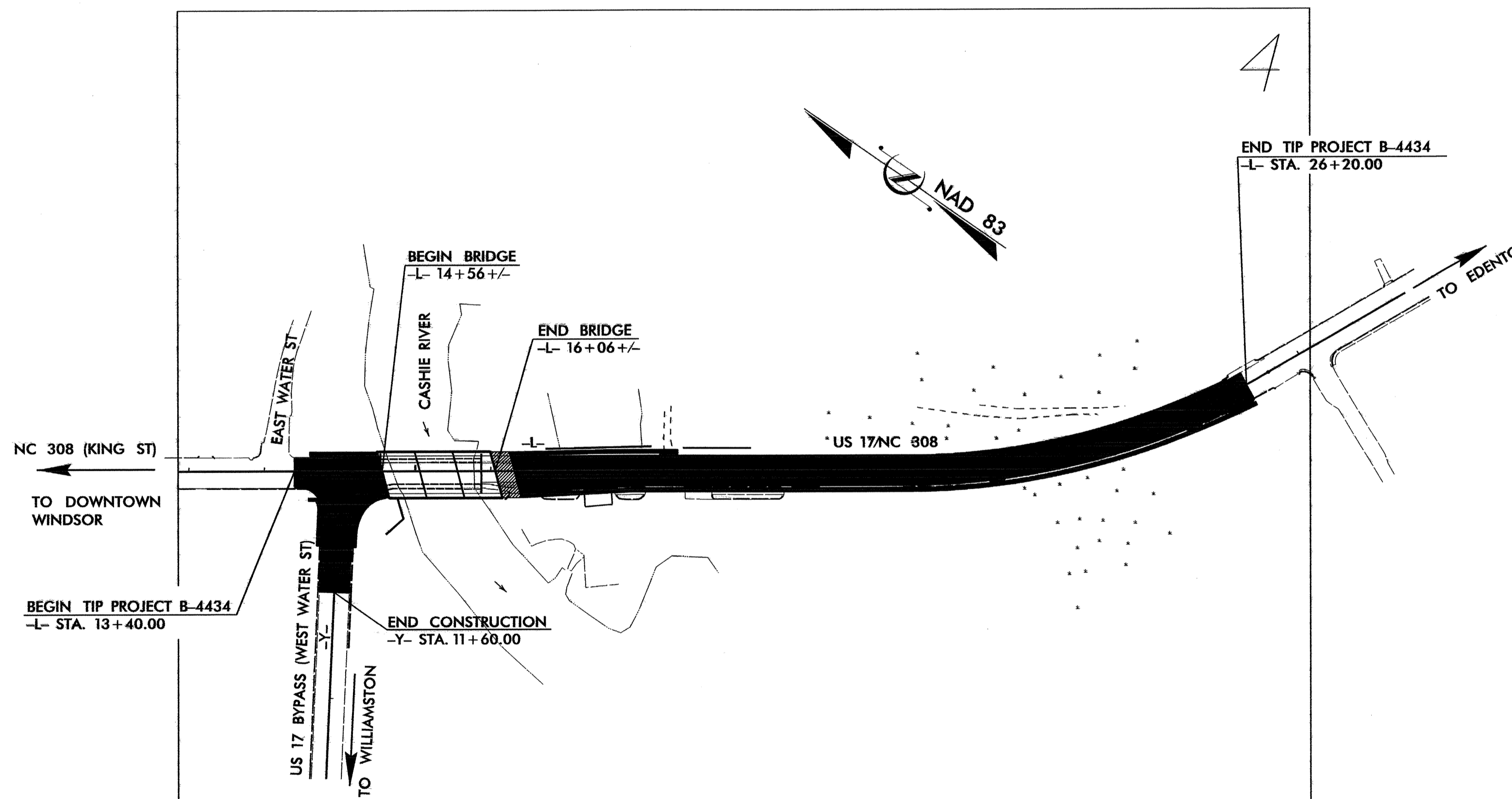


**TIP PROJECT: B-4434**

STATE OF NORTH CAROLINA  
 DIVISION OF HIGHWAYS  
 PLAN FOR PROPOSED  
 HIGHWAY EROSION CONTROL  
**BERTIE COUNTY**

**LOCATION: BRIDGE NO. 14 OVER CASHIE RIVER ON US 17/NC 308**

**TYPE OF WORK: GRADING, DRAINAGE, PAVING, AND STRUCTURE**



STATE	STATE PROJECT REFERENCE NO.	SHEET NO.	TOTAL SHEETS
N.C.	B-4434	EC-1	
STATE PROJ. NO.	F.A. PROJ. NO.	DESCRIPTION	

**EROSION AND SEDIMENT CONTROL MEASURES**

Std. #	Description	Symbol
1630.03	Temporary Silt Ditch	TD
1630.05	Temporary Diversion	TD
1605.01	Temporary Silt Fence	
1606.01	Special Sediment Control Fence	
1622.01	Temporary Berms and Slope Drains	—
1630.01	Riser Basin	⊙
	Silt Basin Type B	▨
1633.01	Temporary Rock Silt Check Type-A	▨
	Temporary Rock Silt Check Type-B	▶
	Wattle	⤿
1634.01	Temporary Rock Sediment Dam Type-A	▨
1634.02	Temporary Rock Sediment Dam Type-B	▨
1635.01	Rock Pipe Inlet Sediment Trap Type-A	⊙
1635.02	Rock Pipe Inlet Sediment Trap Type-B	⊙
1630.04	Stilling Basin	▭
1630.06	Special Stilling Basin	▭
	Rock Inlet Sediment Trap:	
1632.01	Type A	A
1632.02	Type B	B
1632.03	Type C	C
	Skimmer Basin	▭
	Tiered Skimmer Basin	▭
	Infiltration Basin	▭

**THIS PROJECT CONTAINS  
 EROSION CONTROL PLANS  
 FOR CLEARING AND  
 GRUBBING PHASE OF  
 CONSTRUCTION.**

**GRAPHIC SCALE**

0  
  
 PLANS

0  
  
 PROFILE (HORIZONTAL)

0  
  
 PROFILE (VERTICAL)

ROADSIDE ENVIRONMENTAL UNIT  
 DIVISION OF HIGHWAYS  
 STATE OF NORTH CAROLINA

Prepared in the Office of:  
**ROADSIDE ENVIRONMENTAL UNIT**  
 1 South Wilmington St.  
 Raleigh, NC 27611  
**2006 STANDARD SPECIFICATIONS**

Roadway Standard Drawings

The following roadway english standards as appear in "Roadway Standard Drawings"- Roadway Design Unit - N. C. Department of Transportation - Raleigh, N. C., dated July 18, 2006 and the latest revision thereto are applicable to this project and by reference hereby are considered a part of these plans.

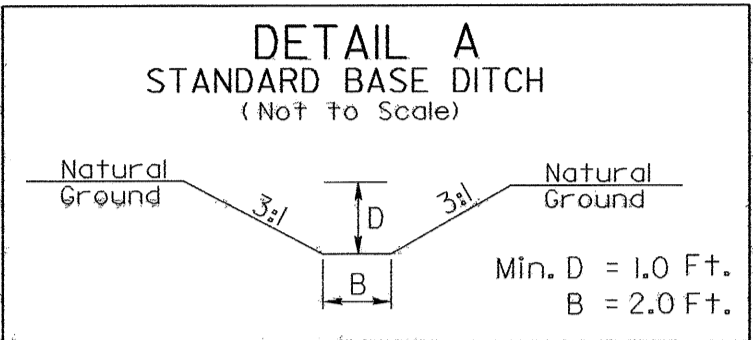
1605.01 Temporary Silt Fence	1632.02 Rock Inlet Sediment Trap Type B
1606.01 Special Sediment Control Fence	1632.03 Rock Inlet Sediment Trap Type C
1607.01 Gravel Construction Entrance	1633.01 Temporary Rock Silt Check Type A
1622.01 Temporary Berms and Slope Drains	



PROJECT REFERENCE NO.		SHEET NO.	
B-4434		EC-02/CONST.04	
RW SHEET NO.			
ROADWAY DESIGN ENGINEER		HYDRAULICS ENGINEER	

NOTE:  
PLACE TEMPORARY ROCK SEDIMENT DAMS - B  
AND TEMPORARY ROCK SILT CHECKS TYPE - A AT  
DRAINAGE OUTLETS.

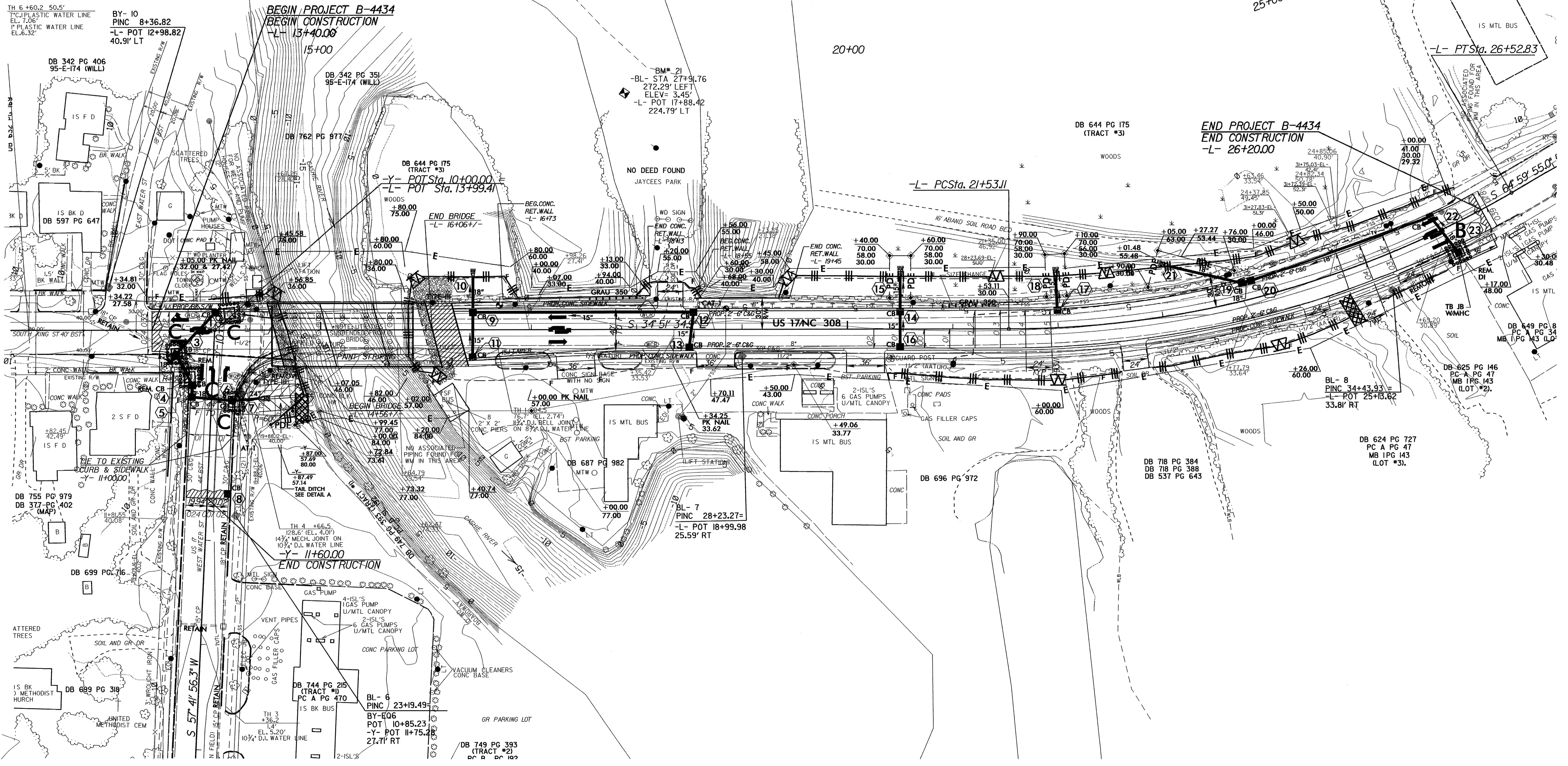
CLEARING AND GRUBBING  
EROSION CONTROL FOR  
CONSTRUCTION SHEET 04



-Y- 10+63+/- LT (0.5% Grade)  
DDE: 130 CY

TH 6+60.2 50.5'  
7" PLASTIC WATER LINE  
EL. 7.06'  
1" PLASTIC WATER LINE  
EL. 6.32'

BY- 10  
PINC 8+36.82  
-L- POT 12+98.82  
40.91' LT



DB 793 PG 320  
PC B PG 387

IS MTL BUS  
-L- PSta. 26+52.83

END PROJECT B-4434  
END CONSTRUCTION  
-L- 26+20.00

-L- PCSta. 21+53.11

DB 649 PG 8  
PC A PG 34  
MB 1 PG 143 (LOT #2)

DB 624 PG 727  
PC A PG 47  
MB 1 PG 143 (LOT #3)

DB 718 PG 384  
DB 718 PG 388  
DB 537 PG 643

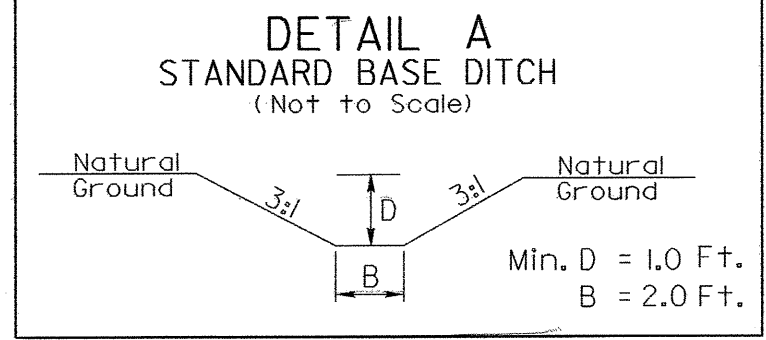
BL- 7  
PINC 28+23.27=  
-L- POT 18+99.98  
25.59' RT

BL- 6  
PINC 23+19.49=  
BY- 606  
POT 10+85.23  
-Y- POT 11+75.28  
27.71' RT

DB 749 PG 393  
(TRACT #2)  
PC B PG 100



PROJECT REFERENCE NO.	SHEET NO.
B-4434	EC-03/CONST.04
RW SHEET NO.	
ROADWAY DESIGN ENGINEER	HYDRAULICS ENGINEER



-Y- 10+63+/-, LT (0.5% Grade)  
DDE: 130 CY

