

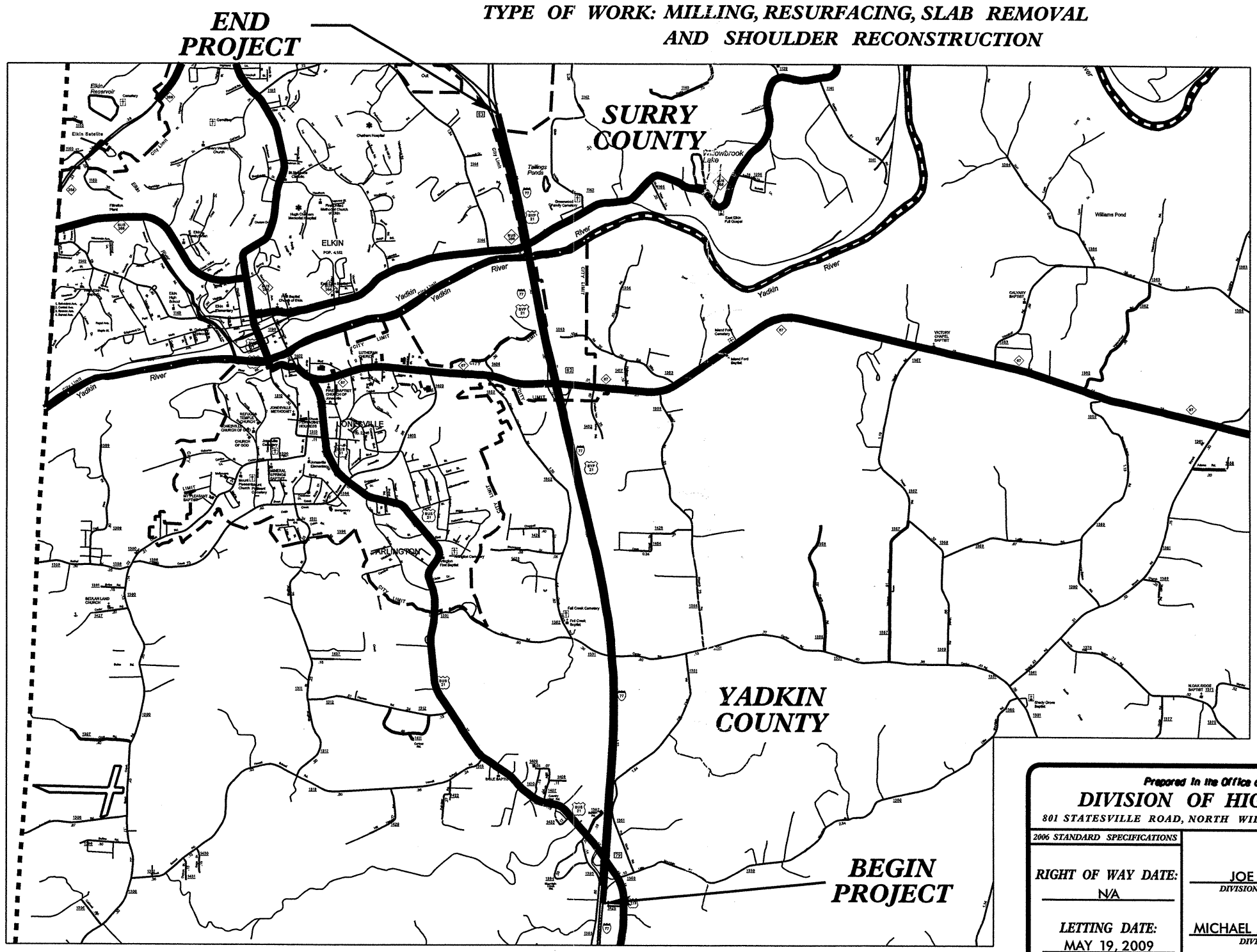
CONTRACT: C202076 TIP PROJECT: I-5103

STATE OF NORTH CAROLINA  
DIVISION OF HIGHWAYS

STATE PROJECT REFERENCE NO.	SHEET NO.	TOTAL SHEETS
I-5103	1	

**YADKIN & SURRY COUNTIES**

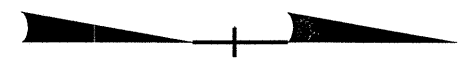
LOCATION: INTERSTATE 77 FROM US 21 BUSINESS (EXIT 79)  
TO US 21 BYPASS (MILEPOST 84)  
TYPE OF WORK: MILLING, RESURFACING, SLAB REMOVAL  
AND SHOULDER RECONSTRUCTION



Prepared in the Office of:  
**DIVISION OF HIGHWAYS**  
801 STATESVILLE ROAD, NORTH WILKESBORO, NC 28659  
2006 STANDARD SPECIFICATIONS

RIGHT OF WAY DATE: NA	JOE L. LAWS, PE DIVISION PROJECT MANAGER
LETTING DATE: MAY 19, 2009	MICHAEL A. PETTYJOHN, PE DIVISION ENGINEER

DIVISION OF HIGHWAYS  
STATE OF NORTH CAROLINA



**BEGIN MAP #2**  
I-77 SB

**BEGIN MAP #1**  
I-77 NB

**MAP #8**

**MAP #7**

**MAP #4**

**MAP #3**



1393

1425



1394

Mountain Creek Rd.

79

Little

1350

Mountain

Fox Knob Rd.

1433

1392



1351

1410

Nichols Rd.

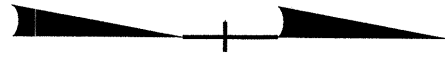
1407

1408



MATCHLINE \* SEE SHEET 3 \*

PROJECT REFERENCE NO.	SHEET NO.
I-5103	3



Macemore Dr.

1423

1424

1352

Fall Creek Church Rd.

Fall Creek Baptist

Fall Creek Cemetery



MAP #2 - I-77 SB

MAP #1 - I-77 NB

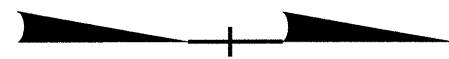


Center Rd.  
1331

MATCHLINE \* SEE SHEET 2 \*

\* SEE SHEET 4 \* MATCHLINE

LIMIT



Fall Creek Church Rd.

1404

CITY

MAP #9

LIMIT



MAP #10

LIMIT

1352

MAP #1 - I-77 NB



MAP #2 - I-77 SB



82

MAP #5

MAP #6

1353

Eck Rd.

CITY LIMIT



Phillips-Van Heusen Rd.

1432

Rd.

1354

Moncus

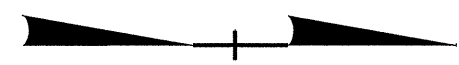
67

1417

Hollman Rd.

MATCHLINE \* SEE SHEET 3 \*

MATCHLINE \* SEE SHEET 5 \*



SURRY COUNTY

YADKIN COUNTY

BUS  
268

1144

END MAP #2  
I-77 SB

BYP  
21

CITY LIMIT

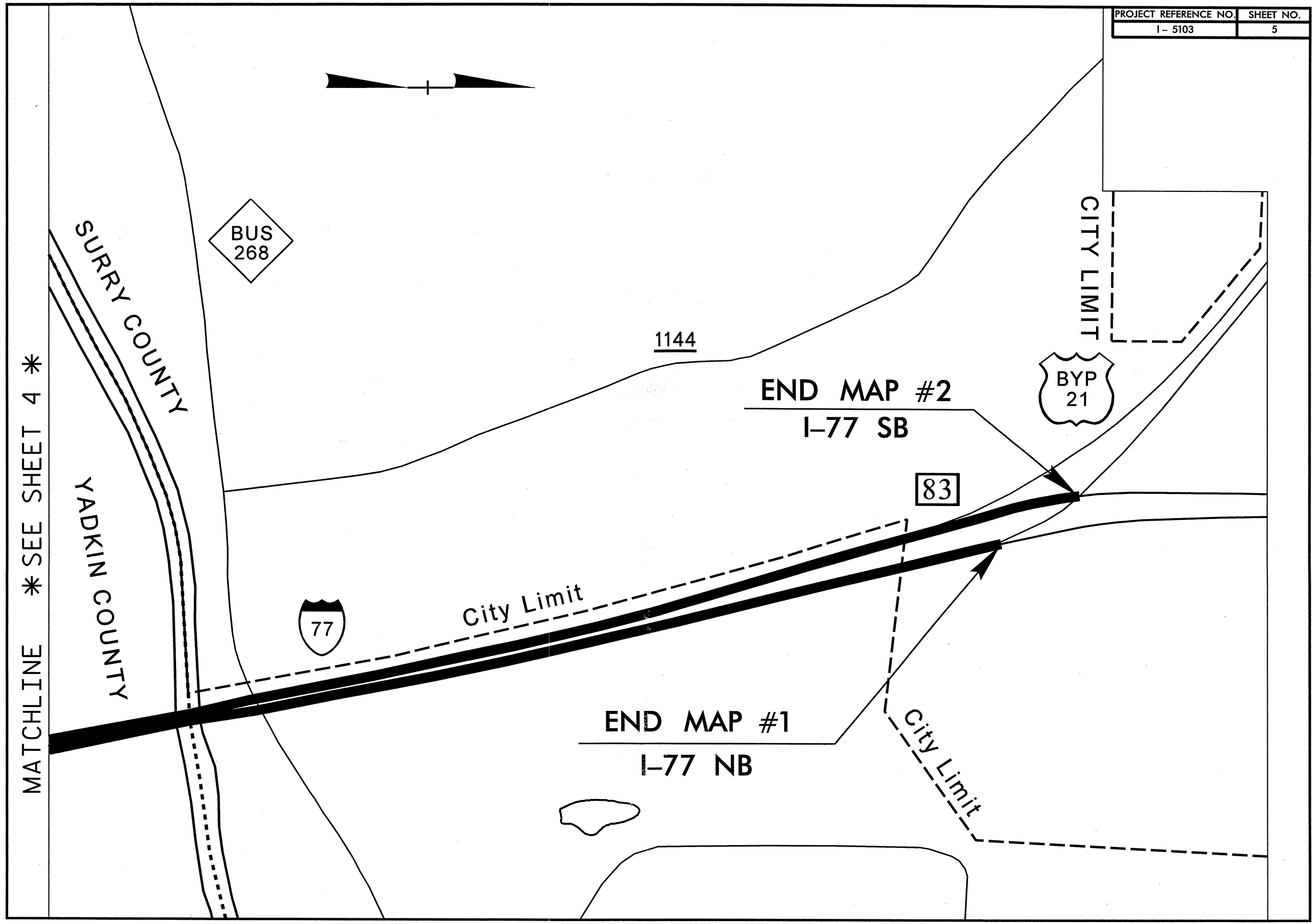
83

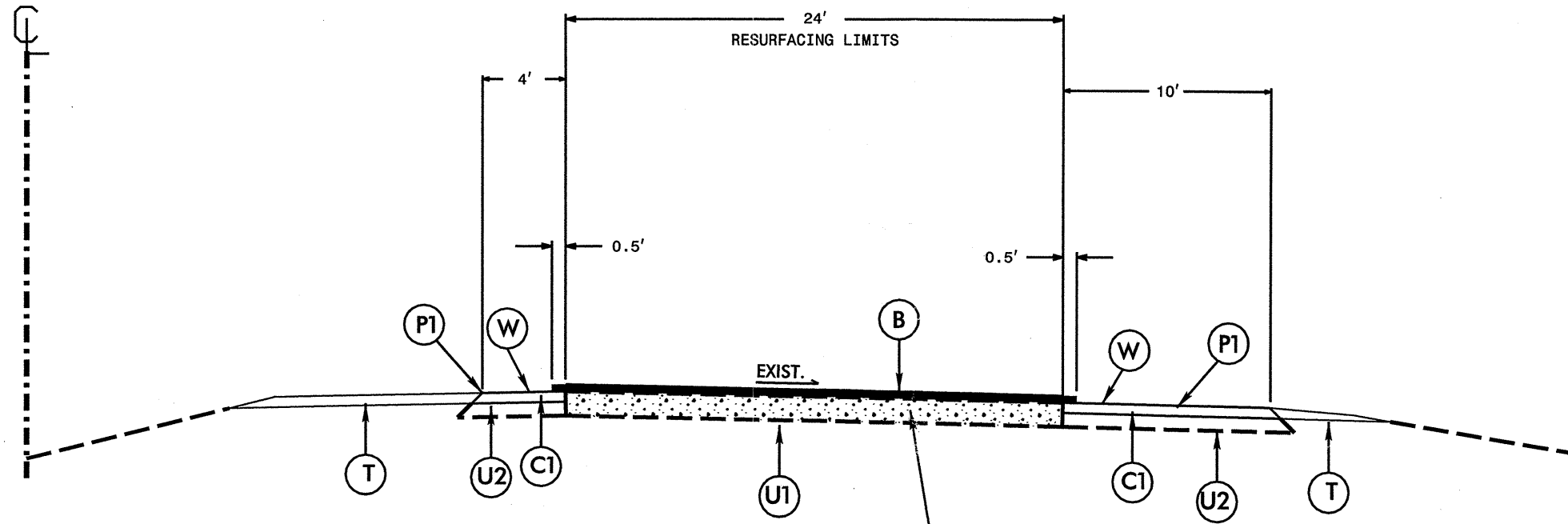
City Limit

END MAP #1  
I-77 NB

City Limit

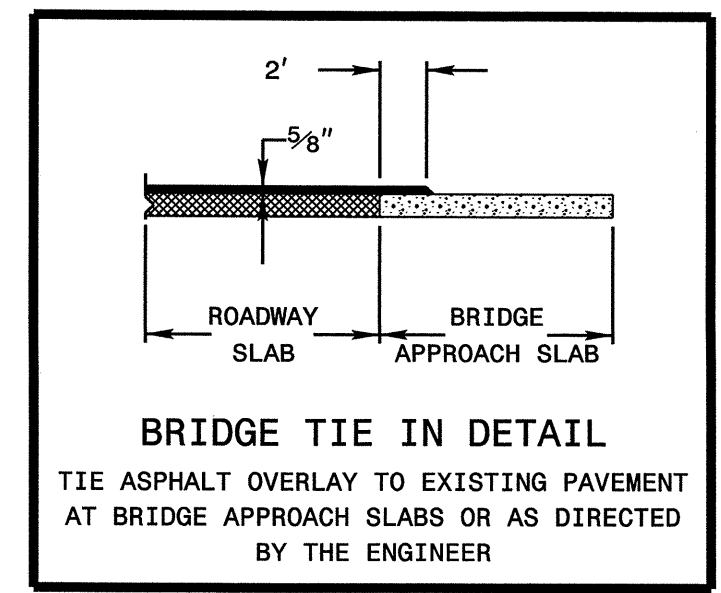
MATCHLINE \*SEE SHEET 4\*





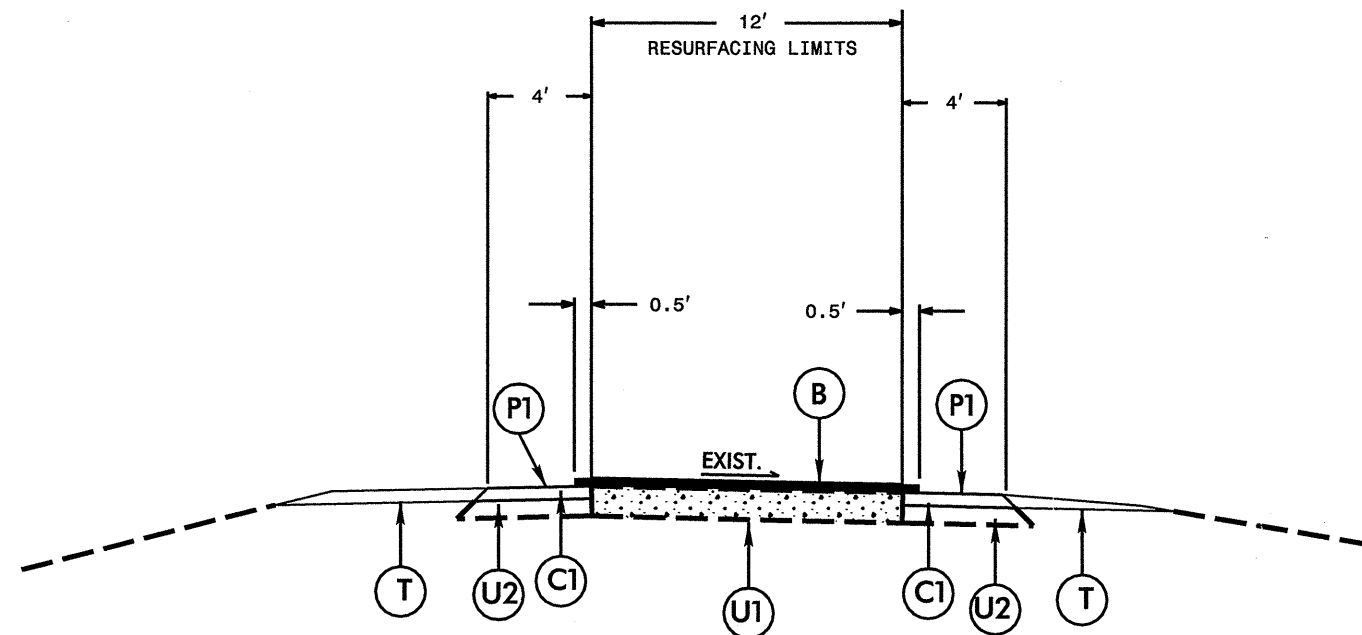
SEE "SLAB REPLACEMENT  
DETAIL" SHEET 7

**TYPICAL SECTION NO. 1**  
**FROM US 21 BUSINESS (EXIT 79) TO US 21 BYPASS (MILEPOST 84)**  
**(MIRROR FOR SOUTHBOUND LANE)**

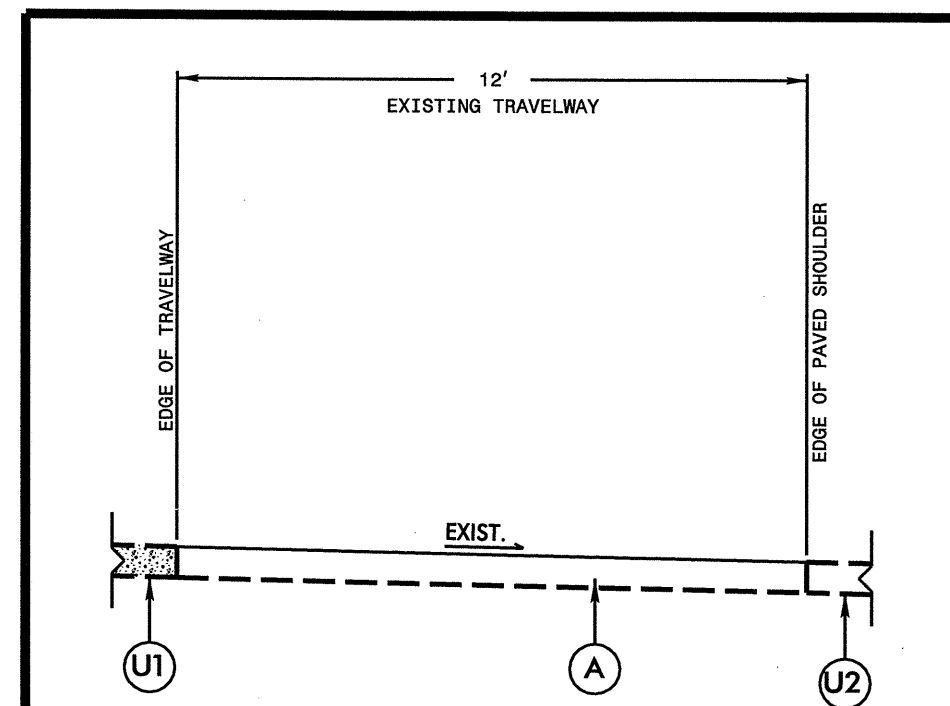


PAVEMENT SCHEDULE			
A	9.5" JOINTED PORTLAND CEMENT CONCRETE PAVEMENT, THROUGH LANES (WITH DOWELS).	U1	EXISTING CONCRETE PAVEMENT
B	5/8" ULTRA-THIN HOT MIX ASPHALT, TYPE B	U2	EXISTING ASPHALT PAVEMENT
C1	3" ASPHALT CONCRETE SURFACE COURSE, TYPE S9.5C, AT AN AVERAGE RATE OF 168 LBS. PER SQ. YD. IN EACH OF TWO LAYERS.	V	EXISTING BRIDGE DECK
P1	3" MILLING	W	MILLED RUMBLE STRIPS
T	SHOULDER RECONSTRUCTION		

I-77 FROM US 21 BUSINESS (EXIT 79) TO US 21 BYPASS (MILEPOST 84)		
DIVISION II YADKIN & SURRY COUNTIES		
REVISIONS	NO.	DATE
SCALE: N/A		DATE: 3/2008
N.C. DEPARTMENT OF TRANSPORTATION DIVISION OF HIGHWAYS DIVISION ELEVEN		PREPARED BY: J. L. LAWS REVIEWED BY: REVIEWED BY:



**TYPICAL SECTION NO. 2**  
**ENTRANCE AND EXIT RAMPS AT US 21 BUSINESS (EXIT 79)**  
**ENTRANCE AND EXIT RAMPS AT NC 67 (EXIT 82)**




**SLAB REPLACEMENT SECTION DETAIL**

\*\*LOCATIONS AS DIRECTED BY THE ENGINEER

\*\*IF SUBGRADE MATERIAL IS DETERMINED BY THE ENGINEER TO BE UNSUITABLE, REMOVE UP TO 12" AND REPLACE WITH SOIL STABILIZATION FABRIC AND SELECT MATERIAL, CLASS IV. PLACE SELECT MATERIAL IN LIFTS OF 6" OR LESS.

**PAVEMENT SCHEDULE**

A	9.5" JOINTED PORTLAND CEMENT CONCRETE PAVEMENT, THROUGH LANES (WITH DOWELS).	U1	EXISTING CONCRETE PAVEMENT
B	5/8" ULTRA-THIN HOT MIX ASPHALT, TYPE B	U2	EXISTING ASPHALT PAVEMENT
C1	3" ASPHALT CONCRETE SURFACE COURSE, TYPE S9.5C, AT AN AVERAGE RATE OF 168 LBS. PER SQ. YD. IN EACH OF TWO LAYERS.	V	EXISTING BRIDGE DECK
P1	3" MILLING	W	MILLED RUMBLE STRIPS
T	SHOULDER RECONSTRUCTION		

I-77 FROM US 21 BUSINESS (EXIT 79) TO US 21 BYPASS (MILEPOST 84)		
DIVISION II YADKIN & SURRY COUNTIES		
REVISIONS	NO.	DATE
N.C. DEPARTMENT of TRANSPORTATION DIVISION of HIGHWAYS DIVISION ELEVEN		SCALE: N/A DATE: 3/2008 PREPARED BY: J. L. LAWS REVIEWED BY:







### SUMMARY OF QUANTITIES

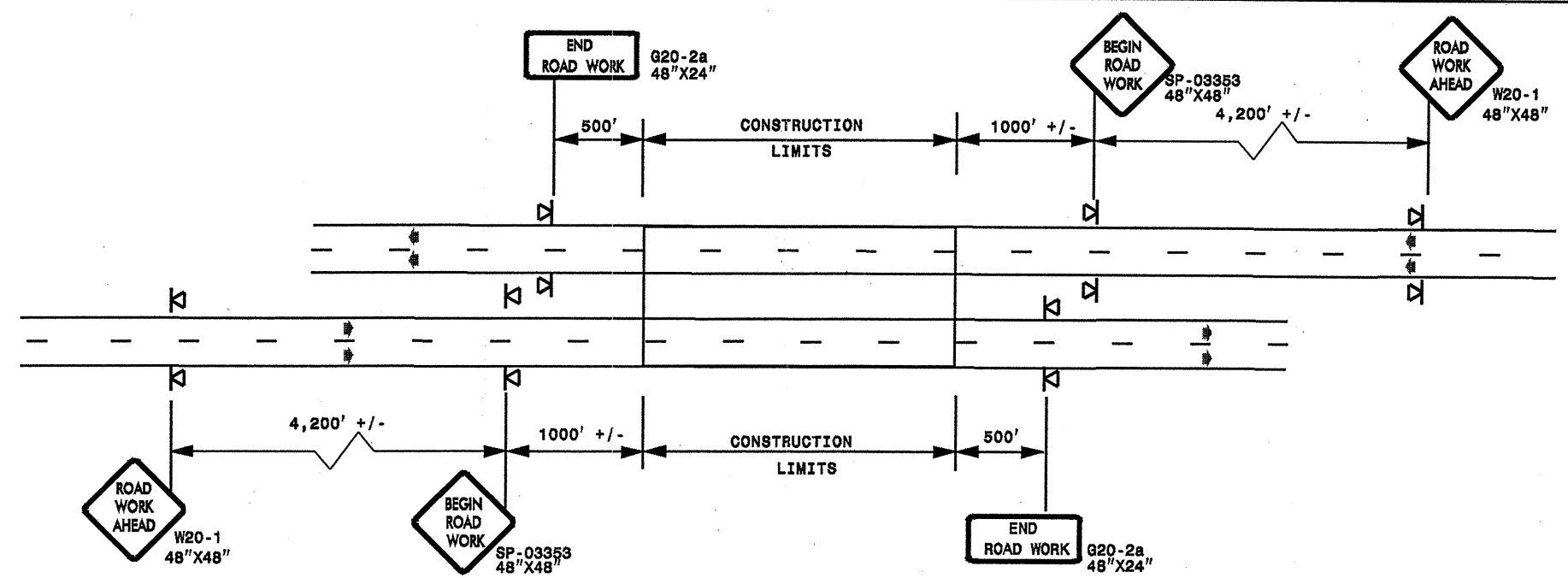
PROJECT NO	COUNTY	MAP NO	ROUTE	DESCRIPTION	TYP NO	LENGTH MI	WIDTH FT	UNDERCUT EXCAVATION CY	REMOVAL OF EXISTING CONCRETE PAVEMENT SLABS SY	FABRIC FOR SOIL STABILIZATION SY	SELECT MATERIAL, CLASS IV TON	SEALING EXISTING PAVEMENT CRACKS LB	SHOULDER RECONSTRUCTION SMI	3" MILLING SY	SURFACE COURSE, S9.5C TONS	PG 70-22 PLANT MIX TONS	PG 70-28 PLANT MIX TONS	ULTRATHIN HOT MIX ASPHALT, TYPE B TON	APPLICATION OF ULTRATHIN HOT MIX SY	MILLED RUMBLE STRIPS LF	9.5" PORT CEM CONC PAVEMENT, THROUGH LANES (WITH DOWELS) SY	PORTABLE LIGHTING LS	SEED & MULCHING AC	POLICE HR	TRAFFIC CONTROL LUMP SUM LS	
I-5103	Yadkin & Surry	1	I-77 NB	FROM US 21 BUSINESS EXIT RAMP TO US 21 BYPASS SPLIT	1	5.1	24	500	616	616	1,000	50,000	10.2	41,888	7,259	436	131	2,513	71,808	53,856	616	*	12.40	80	*	
		2	I-77 SB	FROM US 21 SPLIT TO US 21 BUSINESS ENTRANCE RAMP	1	5.1	24	500	616	616	1,000	50,000	10.2	41,888	7,259	436	131	2,513	71,808	53,856	616	*	12.40	80	*	
		3	US21	NB EXIT RAMP	2	0.3	12							0.6	1,408	244	15	4	74	2,112			*	0.75	5	*
		4	US21	NB ENTRANCE RAMP	2	0.3	12							0.6	1,408	244	15	4	74	2,112			*	0.75	5	*
		5	NC67	NB EXIT RAMP	2	0.3	12							0.6	1,408	244	15	4	74	2,112			*	0.75	5	*
		6	NC67	NB ENTRANCE RAMP	2	0.32	12							0.64	1,502	260	16	4	79	2,253			*	0.80	5	*
		7	US21	SB EXIT RAMP	2	0.28	12							0.56	1,315	228	14	4	69	1,971			*	0.70	5	*
		8	US21	SB ENTRANCE RAMP	2	0.37	12							0.74	1,737	301	18	5	91	2,605			*	0.90	5	*
		9	NC67	SB EXIT RAMP	2	0.24	12							0.74	1,126	195	12	3	59	1,690			*	0.90	5	*
		10	NC67	SB ENTRANCE RAMP	2	0.29	12							0.58	1,361	236	14	4	72	2,042			*	0.75	5	*
<b>TOTAL FOR PROJ NO. I-5103</b>						<b>12.6</b>		<b>1,000</b>	<b>1,232</b>	<b>1,232</b>	<b>2,000</b>	<b>100,000</b>	<b>25.46</b>	<b>95,041</b>	<b>16,470</b>	<b>991</b>	<b>294</b>	<b>5,618</b>	<b>160,513</b>	<b>107,712</b>	<b>1,232</b>	<b>1</b>	<b>31.10</b>	<b>200</b>	<b>1</b>	
<b>GRAND TOTAL</b>						<b>12.6</b>		<b>1,000</b>	<b>1,232</b>	<b>1,232</b>	<b>2,000</b>	<b>100,000</b>	<b>25.46</b>	<b>95,041</b>	<b>16,470</b>	<b>991</b>	<b>294</b>	<b>5,618</b>	<b>160,513</b>	<b>107,712</b>	<b>1,232</b>	<b>1</b>	<b>31.10</b>	<b>200</b>	<b>1</b>	

### THERMOPLASTIC AND PAINT QUANTITIES

PROJECT NO	COUNTY	MAP NO	ROUTE	DESCRIPTION	4697000000-E		4725000000-E				4815000000-E		4847100000-E		4847120000-E	4905000000-N	
					8" X 120 M WHITE THERMO	THERMO RT ARROW 90 M	THERMO LT ARROW 90 M	THERMO MERGE ARROW 90 M	THERMO STR RT ARROW 90 M	THERMO STR & LT ARROW 90 M	6" YELLOW PAINT	6" WHITE PAINT	6" WHITE POLYUREA	6" YELLOW POLYUREA	12" WHITE POLYUREA	SNOW PLOWABLE MARKERS	
					LF	EA	EA	EA	EA	EA	LF	LF	LF	LF	LF	EA	
I-5103	Yadkin & Surry	1	I-77 NB	FROM US 21 BUSINESS EXIT RAMP TO US 21 BYPASS SPLIT								26,628	32,314	32,314	26,628	2,000	337
		2	I-77 SB	FROM US 21 SPLIT TO US 21 BUSINESS ENTRANCE RAMP								26,628	32,314	32,314	26,628	2,000	337
		3	US21	NB EXIT RAMP	37	1	1					1,584	1,584	1,584	1,584		40
		4	US21	NB ENTRANCE RAMP				3				1,584	1,584	1,584	1,584		26
		5	NC67	NB EXIT RAMP	37				1			1,584	1,584	1,584	1,584		40
		6	NC67	NB ENTRANCE RAMP				3				1,690	1,690	1,690	1,690		26
		7	US21	SB EXIT RAMP	37	1	1					1,479	1,479	1,479	1,479		40
		8	US21	SB ENTRANCE RAMP				3				1,954	1,954	1,954	1,954		26
		9	NC67	SB EXIT RAMP	37					1		1,267	1,267	1,267	1,267		40
		10	NC67	SB ENTRANCE RAMP				3				1,532	1,532	1,532	1,532		26
<b>TOTAL FOR PROJ NO. I-5103</b>					<b>148</b>	<b>2</b>	<b>2</b>	<b>12</b>	<b>1</b>	<b>1</b>	<b>65,930</b>	<b>77,302</b>	<b>77,302</b>	<b>65,930</b>	<b>4,000</b>	<b>938</b>	
								<b>18</b>			<b>143,232</b>	<b>143,232</b>					
<b>GRAND TOTAL</b>					<b>148</b>	<b>2</b>	<b>2</b>	<b>12</b>	<b>1</b>	<b>1</b>	<b>65,930</b>	<b>77,302</b>	<b>77,302</b>	<b>65,930</b>	<b>4,000</b>	<b>938</b>	
								<b>18</b>			<b>143,232</b>	<b>143,232</b>					

**ADVANCE WORK ZONE WARNING SIGNING FOR FREEWAYS (4 LANES OR GREATER)**

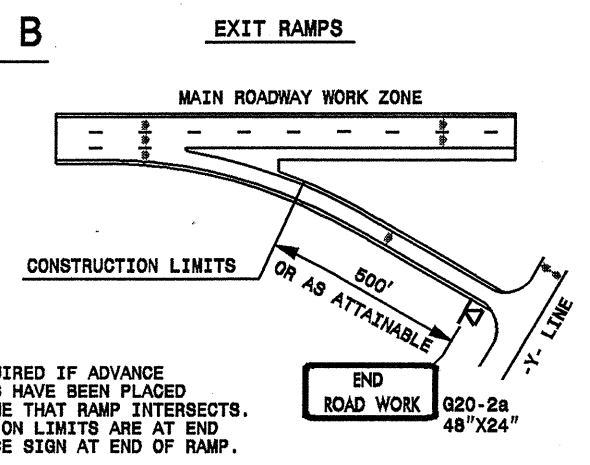
**DETAIL A**



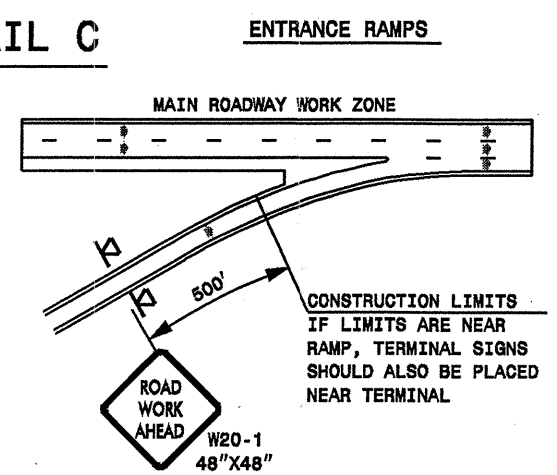
STATE OF NORTH CAROLINA  
DEPT. OF TRANSPORTATION  
DIVISION OF HIGHWAYS  
RALEIGH, N.C.

**ROADWAYS INTERSECTING ALONG FREEWAY WORK ZONE (Y-LINES)**

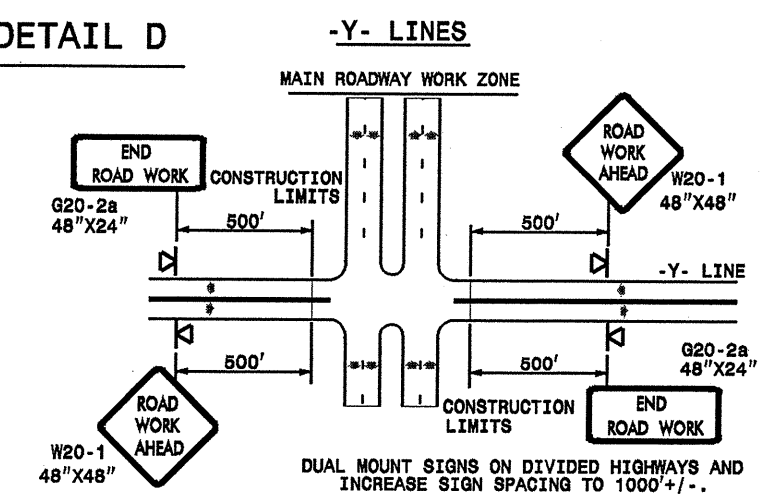
**DETAIL B**



**DETAIL C**



**DETAIL D**



**DETAIL DRAWING  
FOR FREEWAYS  
WORK ZONE WARNING SIGNS  
(SHORT-DURATION LANE CLOSURES)**

**GENERAL NOTES**

- USE FLUORESCENT ORANGE SHEETING (TYPE VII OR HIGHER) ON ALL ADVANCE WORK ZONE SIGNS.
- DO NOT INSTALL ADVANCE WARNING SIGNS MORE THAN 3 DAYS PRIOR TO BEGINNING OF WORK.
- ALL SIGN SPACING DIMENSIONS ARE APPROXIMATE, FIELD ADJUST AS NECESSARY OR AS DIRECTED.
- USE PORTABLE WORK ZONE SIGNS ONLY WITH PORTABLE WORK ZONE SIGN STANDS SPECIFICALLY DESIGNED FOR ONE ANOTHER. PORTABLE WORK ZONE SIGNS MAY BE ROLL UP OR APPROVED COMPOSITE.
- PROVIDE PORTABLE WORK ZONE SIGN STANDS, PORTABLE SIGNS AND SIGN SHEETING WHICH ARE LISTED ON THE NORTH CAROLINA DEPARTMENT OF TRANSPORTATION'S APPROVED PRODUCT LIST OR ACCEPTED AS TRAFFIC QUALIFIED BY THE TRAFFIC CONTROL UNIT.
- \*\* TWO-WAY UNDIVIDED ADVANCE WARNING SIGN CONFIGURATION MAY BE USED ON MULTI-LANE FACILITIES WHERE CONDITIONS LIMIT THE USE OF DUAL MOUNTED SIGNS AS DETERMINED BY THE ENGINEER.

**LEGEND**

◀ PORTABLE SIGN

➔ DIRECTION OF TRAFFIC FLOW

APPROVED: _____	DATE: _____	DETAIL DRAWING FOR FREEWAYS WORK ZONE WARNING SIGNS	
SEAL			
SCALE: NONE	REVISIONS		
DATE: 7-98	10/01		
DWG. BY:	10-98 03/04		
DESIGN BY:	01/01 11/04		
REVIEWED BY:			

17-MAR-2009 16:31 s:\signing\resurfacing\2009\dwg\c202076-418633.st1-1-5103-yadur\_1-77\c202076-418633.st1-1-5103-freewaygreat\July2006.dgn