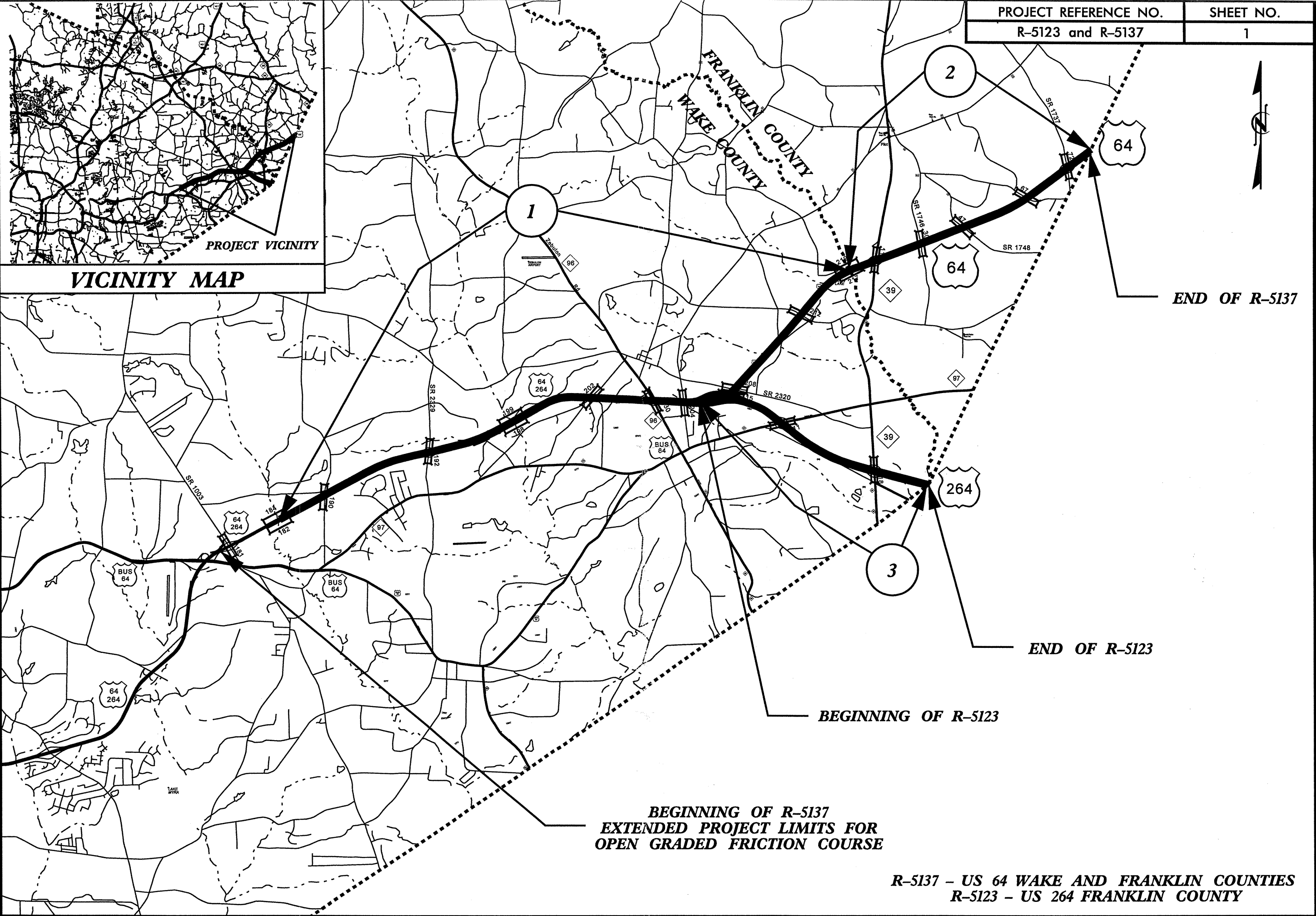


PROJECT VICINITY

VICINITY MAP



END OF R-5137

END OF R-5123

BEGINNING OF R-5123

BEGINNING OF R-5137
EXTENDED PROJECT LIMITS FOR
OPEN GRADED FRICTION COURSE

R-5137 - US 64 WAKE AND FRANKLIN COUNTIES
R-5123 - US 264 FRANKLIN COUNTY

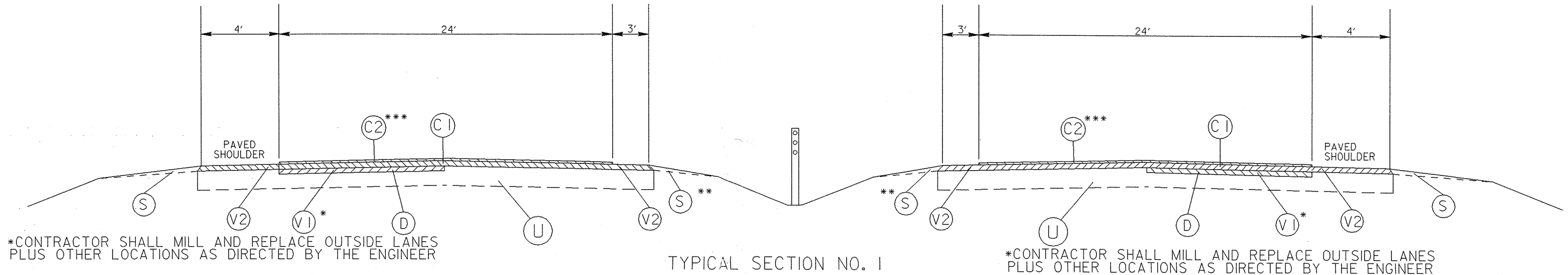
PAVEMENT SCHEDULE

(C1)	PROP. APPROX. 1-1/2" ASPH. CONC. SURFACE COURSE, TYPE S9.5C, AT AN AVERAGE RATE OF 168 LBS. PER SQ. YD.
(C2)	PROP. APPROX. 3/4" OPEN GRADED FRICTION COURSE, TYPE FC-2, AT AN AVERAGE RATE OF 90 LBS. PER SQ. YD.
(D)	PROP. APPROX. 2-1/2" ASPH. INTERMEDIATE COURSE, TYPE I19.0C, AT AN AVERAGE RATE OF 285 LBS. PER SQ. YD.
(S)	PROP. SHOULDER RECONSTRUCTION BY CONTRACTOR
(V1)	MILL 2.5" IN DEPTH
(V2)	MILLED RUMBLE STRIPS
(U)	EXISTING PAVEMENT
(Y)	PROP. NEW STEEL BEAM GUARDRAIL TO REPLACE AREAS OF EXISTING WOODEN POST GUARDRAIL

NOTES

- OPEN GRADED FRICTION COURSE TO BE PLACED ON US 64 EB LANES IN THE FOLLOWING LOCATIONS:
FROM 0.1 MILE WEST OF SR 1003 TO 0.18 MILES EAST OF BRIDGE 182 (1.0 MILE)
FROM THE EASTBOUND EXIT RAMP AT SR 2329 EASTWARD FOR 1.3 MILES (1.3 MILES)
FROM US 64 BUS/NC 96 TO JUST EAST OF SR 2320 (1.2 MILES)
- OPEN GRADED FRICTION COURSE TO BE PLACED ON US 64 WB LANES IN THE FOLLOWING LOCATIONS:
FROM JUST EAST OF SR 2320 TO US 64 BUS/NC 96 (1.2 MILES)
FROM US 64 BUS/NC96 TO 0.29 MILE EAST OF BRIDGE 199 (1.6 MILES)
FROM 0.18 MILES EAST OF BRIDGE 182 TO 0.1 MILE WEST OF SR 1003 (1.0 MILE)
- OPEN GRADED FRICTION COURSE TO BE PLACED ON US 64 EB LANES IN THE FOLLOWING LOCATIONS:
FROM THE WAKE COUNTY LINE TO 0.13 MILE WEST OF SR 1746 (0.87 MILE)
FROM 0.41 MILES EAST OF SR 1746 TO 0.10 MILES WEST OF SR 1748 (0.1 MILES)
FROM 0.25 MILE EAST OF SR 1748 TO THE EASTBOUND EXIT RAMP AT SR 1737 (1.1 MILES)
- BRIDGES TO BE RESURFACED AT LOCATIONS AND TO DEPTH AS DIRECTED BY THE ENGINEER.
- EDGES, PAVEMENT WIDENING, INTERSECTIONS AND BRIDGE FLARES ARE INCLUDED IN THE TABLE OF QUANTITIES.

PROJ. REFERENCE NO. R-5123, R-5137	SHEET NO. 2	TOTAL SHEETS 4
STATE PROJ. NO.	F.A. PROJ. NO.	DESCRIPTION



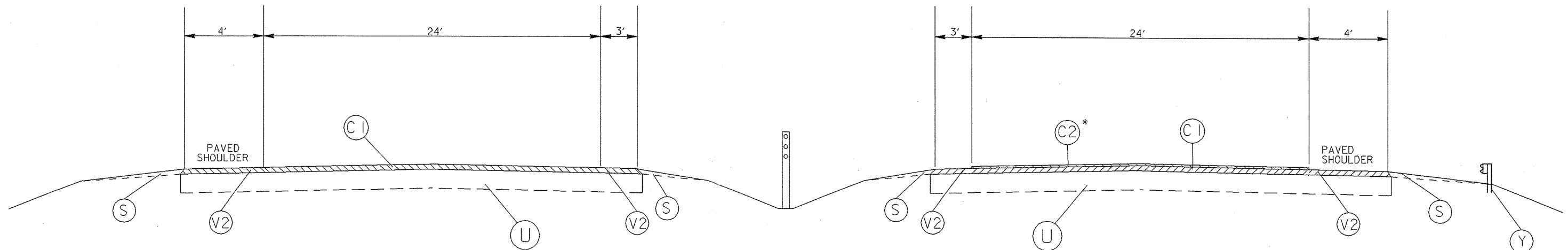
*CONTRACTOR SHALL MILL AND REPLACE OUTSIDE LANES PLUS OTHER LOCATIONS AS DIRECTED BY THE ENGINEER

*CONTRACTOR SHALL MILL AND REPLACE OUTSIDE LANES PLUS OTHER LOCATIONS AS DIRECTED BY THE ENGINEER

*** SEE NOTES FOR OPEN GRADED FRICTION COURSE

**ON US 64 CONTRACTOR SHALL BEGIN MEDIAN SHOULDER RECONSTRUCTION WHERE MEDIAN CABLE GUIDERAIL STARTS TO FRANKLIN COUNTY LINE OR AS DIRECTED BY THE ENGINEER

*** SEE NOTES FOR OPEN GRADED FRICTION COURSE LOCATIONS



TYPICAL SECTION NO. 2

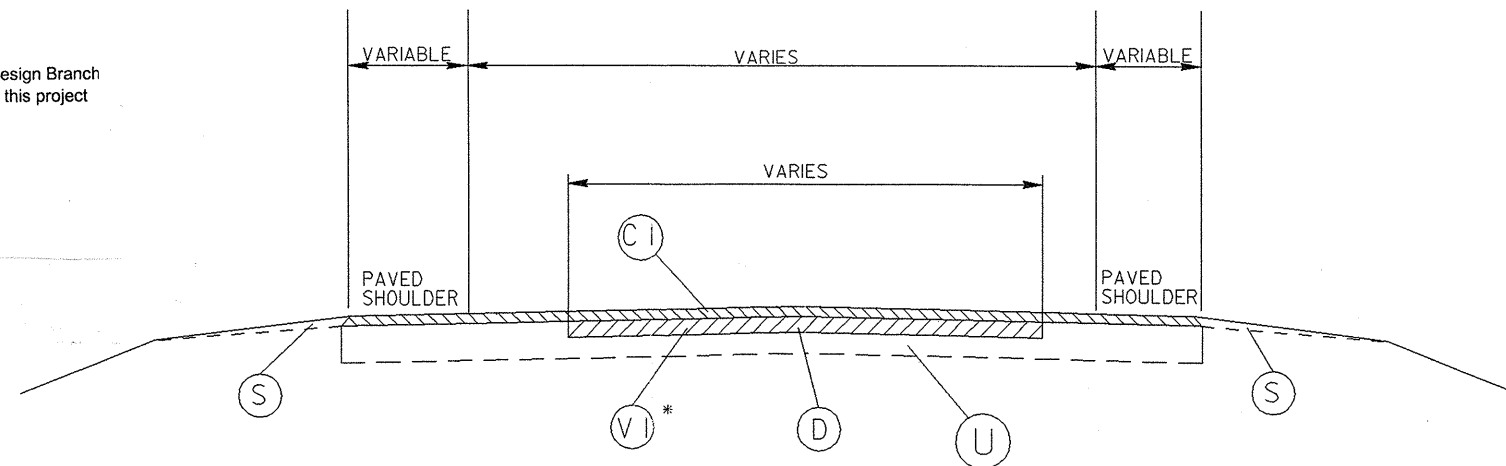
* SEE NOTES FOR OPEN GRADED FRICTION COURSE LOCATIONS

2006 ROADWAY ENGLISH STANDARD DRAWINGS

The following Roadway Standards as appear in "Roadway Standard Drawings" Highway Design Branch N. C. Department of Transportation - Raleigh, N. C., Dated July 18, 2006 are applicable to this project and by reference hereby are considered a part of these plans:

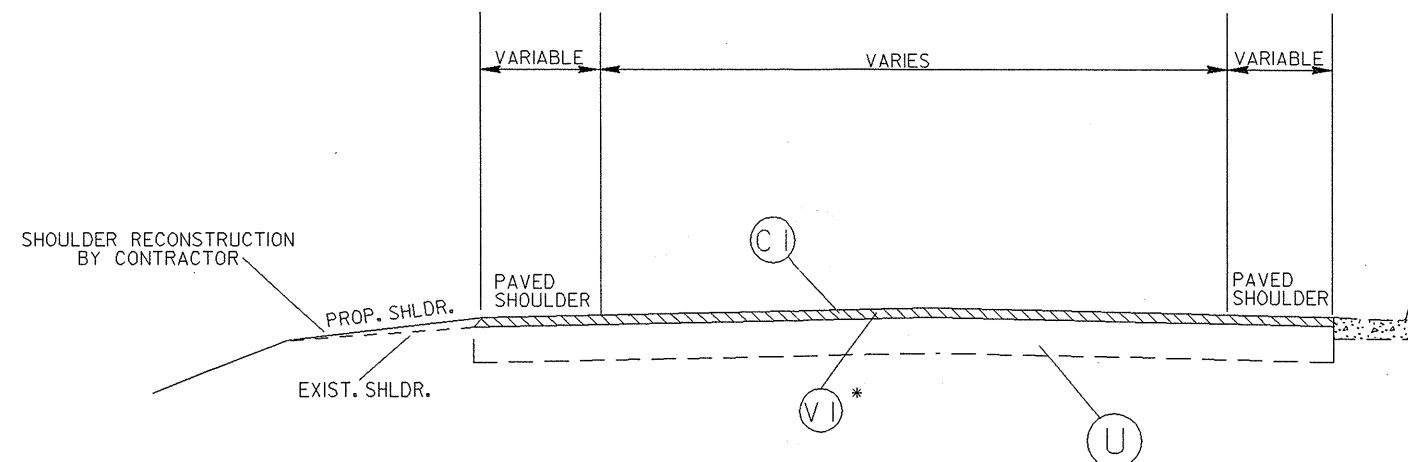
STD. NO.	TITLE
DIVISION 8 - INCIDENTALS	
862.01	Guardrail Placement
862.02	Guardrail Installation

PROJ. REFERENCE NO.	SHEET NO.	TOTAL SHEETS
R-5123, R-5137	3	4
STATE PROJ. NO.	F.A. PROJ. NO.	DESCRIPTION



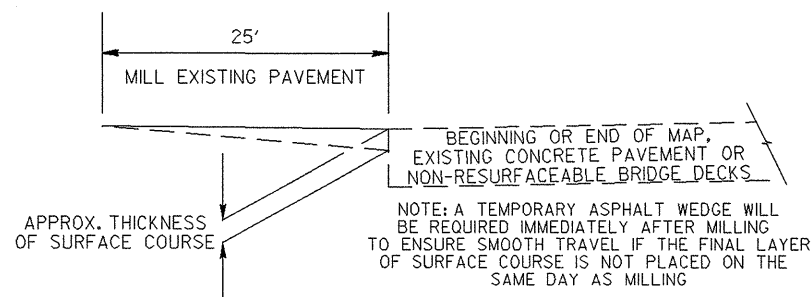
*CONTRACTOR SHALL MILL AND REPLACE LOCATIONS AS DIRECTED BY THE ENGINEER

TYPICAL SECTION NO. 3
CONTRACTOR SHALL USE THIS TYPICAL FOR THE RAMPS

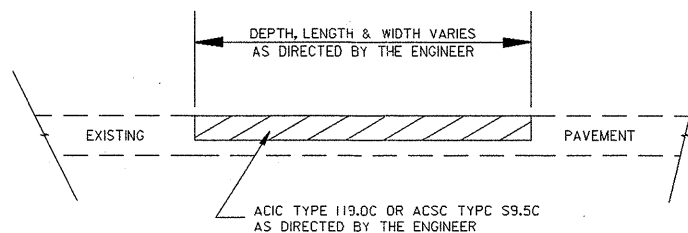


*CONTRACTOR SHALL MILL AND REPLACE TIE FLUSH WITH EXISTING GUTTER

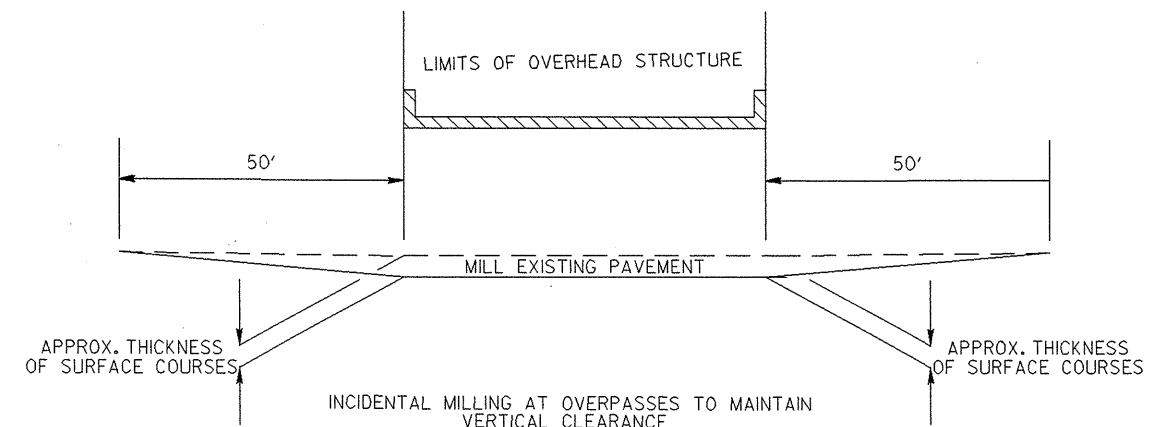
TYPICAL SECTION NO. 4
CONTRACTOR SHALL USE THIS TYPICAL FOR US 64 WEST BOUND OFF RAMP (LOOP) TO NC 96 AND FOR US 64 ON RAMP (LOOP) TO US 264



INCIDENTAL MILLING AT BEGINNING OR END OF MAP, EXISTING CONCRETE PAVEMENT OR NON-RESURFACEABLE BRIDGE DECKS



PATCHING EXISTING PAVEMENT



INCIDENTAL MILLING AT OVERPASSES TO MAINTAIN VERTICAL CLEARANCE

PROJECT NO.	SHEET NO.	TOTAL NO.
R-5123, R-5137	4	4

SUMMARY OF QUANTITIES

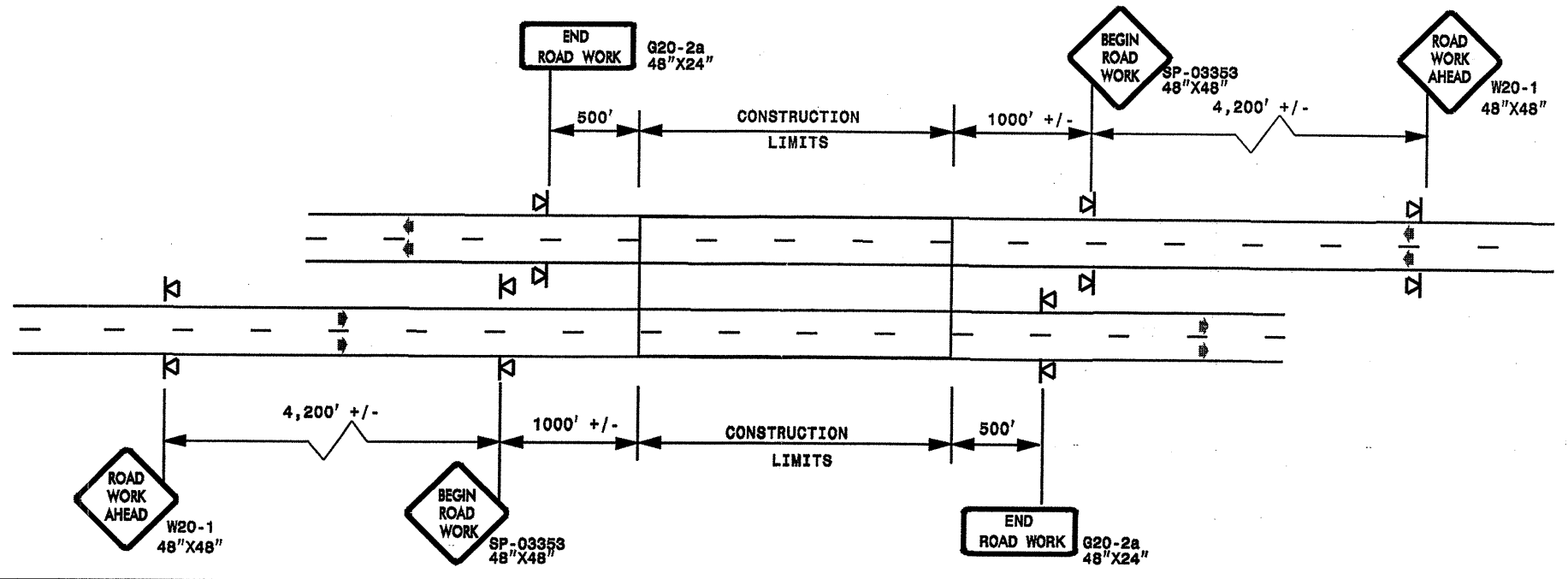
PROJECT NO	COUNTY	MAP NO	ROUTE	DESCRIPTION	TYP NO	LENGTH MI	WIDTH FT	INCIDENTAL STONE BASE TONS	SHOULDER RECONSTRUCTION SMI	2.5" MILLING SY	MILLED RUMBLE STRIPS LF	INCIDENTAL MILLING SY	INTER-MEDIATE COURSE, I19.0C TONS	SURFACE COURSE, S9.5C TONS	PG 64-22 PLANT MIX TONS	PG 70-22 PLANT MIX TONS	PG 76-22 PLANT MIX TONS	OGAFC, TYPE FC-2 MODIFIED TONS	PATCHING EXISTING PAVEMENT TONS	STEEL BEAM GUARDRAIL LF	GUARDRAIL ANCHOR UNIT - CAT-1 EA	GUARDRAIL ANCHOR UNIT - TYPE 350 EA	REMOVE EXISTING GUARDRAIL LF	SEED & MULCHING AC
R-5137, 45037.3.ST1	Wake	1	US 64	FROM BRIDGE 182 TO FRANKLIN COUNTY LINE	1, 3 & 4	8.39	62	100	37.60	146,604	177,200	7,225	20,891	34,190	982	2,051	345	5,744	100					23.62
	Franklin	2	US 64	FROM FRANKLIN CO LINE TO NASH CO LINE	2, 3 & 4	3.7	62	100	16.80		78,144	7,067		14,874		892	81	1,343	100	3,800	7	4	4,000	12.26
TOTAL FOR PROJ NO. R-5137, 45037.3.ST1						12.09		200	54.40	146,604	255,344	14,292	20,891	49,064	982	2,943	426	7,087	200	3,800	7	4	4,000	35.88
R-5123, 45023.3.ST1	Wake	3	US 264	FROM US 64 TO JOHNSTON CO LINE	1, 3 & 4	3.45	62	100	15.60	49,709	72,864	3,232	6,922	13,983	325	839			100					11.30
TOTAL FOR PROJ NO. R-5147						3.45		100	15.60	49,709	72,864	3,232	6,922	13,983	325	839			100					11.30
GRAND TOTAL						15.54		300	70.00	196,313	328,208	17,524	27,813	63,047	1,307	3,782	426	7,087	300	3,800	7	4	4,000	47.18

THERMOPLASTIC AND PAINT QUANTITIES

PROJECT NO	COUNTY	MAP NO	ROUTE	DESCRIPTION	4685000000-E		4688000000-E		4690000000-E	4697000000-E	4700000000-E	4710000000-E	4725000000-E			4775000000-E	4810000000-E		4815000000-E		4855000000-E	4905000000-N	4589000000-N	
					4" X 90 M YELLOW THERMO LF	4" X 90 M WHITE THERMO LF	6" X 90 M WHITE THERMO LF	6" X 90 M YELLOW THERMO LF	6" X 120 M WHITE THERMO LF	8" X 120 M WHITE THERMO LF	12" X 90 M WHITE THERMO LF	24" X 120 M WHITE THERMO LF	THERMO RT ARROW 90 M EA	THERMO STR & RT ARROW 90 M EA	THERMO STR ARROW 90 M EA	COLD APPLIED PLASTIC PAVEMENT MARKING LINES, TYPE III (6") LF	4" WHITE PAINT LF	4" YELLOW PAINT LF	6" WHITE PAINT LF	6" YELLOW PAINT LF	REMOVAL OF PAVEMENT MARKING LINES (6") LF	SNOW PLOWABLE MARKERS EA	TRAFFIC CONTROL LS	
R-5137, 45037.3.ST1	Wake	1	US 64	FROM BRIDGE 182 TO FRANKLIN COUNTY LINE	8,300	8,300	97,530	97,530	28,838	72	6,712			1	1	24	1,904	850	850	158,928	38,544	1,904	1,752	1
	Franklin	2	US 64	FROM FRANKLIN CO LINE TO NASH CO LINE	7,330	7,330	39,072	39,072	10,256	1,560	4,800	90				12				13,596	10,877		730	*
TOTAL FOR PROJ NO. R-5137, 45037.3.ST1					15,630	15,630	136,602	136,602	39,094	1,632	11,512	90		1	1	36	1,904	850	850	172,524	49,421	1,904	2,482	1
					31,260	31,260	273,204	273,204						38				1,700		221,945				
R-5123, 45023.3.ST1	Wake	3	US 264	FROM US 64 TO JOHNSTON CO LINE	7,605	7,605	36,432	36,432	9,108	150	7,635					12	1,535	850	850	45,540		2,135	906	*
TOTAL FOR PROJ NO. R-5147					7,605	7,605	36,432	36,432	9,108	150	7,635				12	1,535	850	850	45,540		2,135	906		
					15,210	15,210	72,864	72,864						12			1,700		45,540					
GRAND TOTAL					23,235	23,235	173,034	173,034	48,202	1,782	19,147	90		1	1	48	3,439	1,700	1,700	218,064	49,421	4,039	3,388	Lump Sum
					46,470	46,470	346,068	346,068						50			3,400		267,485					

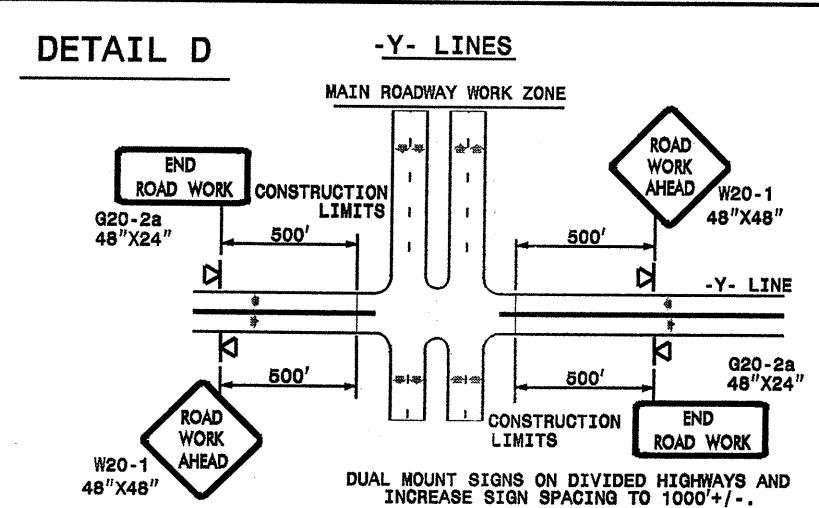
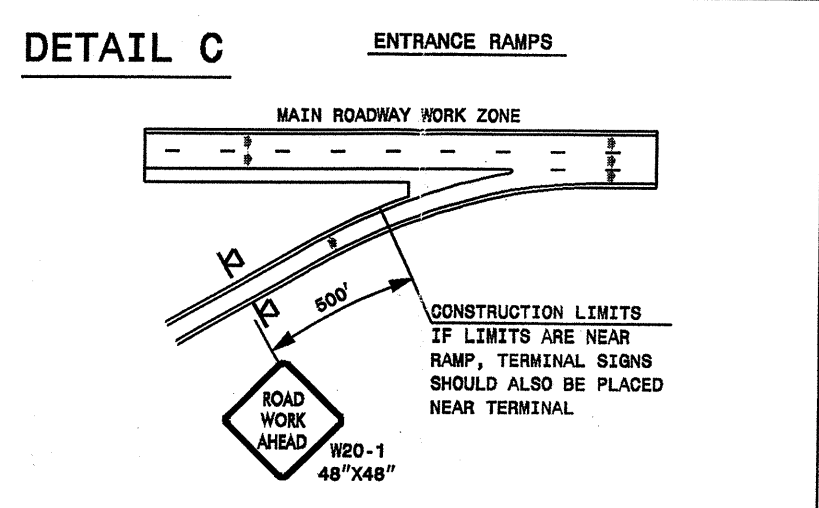
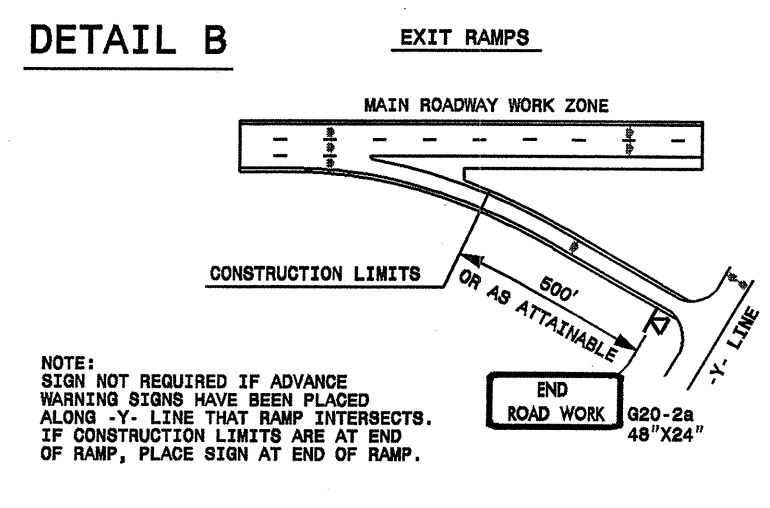
ADVANCE WORK ZONE WARNING SIGNING FOR FREEWAYS (4 LANES OR GREATER)

DETAIL A



STATE OF NORTH CAROLINA
DEPT. OF TRANSPORTATION
DIVISION OF HIGHWAYS
RALEIGH, N.C.

ROADWAYS INTERSECTING ALONG FREEWAY WORK ZONE (Y-LINES)



**DETAIL DRAWING
FOR FREEWAYS
WORK ZONE WARNING SIGNS
(SHORT-DURATION LANE CLOSURES)**

GENERAL NOTES

- USE FLUORESCENT ORANGE SHEETING (TYPE VII OR HIGHER) ON ALL ADVANCE WORK ZONE SIGNS.
- DO NOT INSTALL ADVANCE WARNING SIGNS MORE THAN 3 DAYS PRIOR TO BEGINNING OF WORK.
- ALL SIGN SPACING DIMENSIONS ARE APPROXIMATE, FIELD ADJUST AS NECESSARY OR AS DIRECTED.
- USE PORTABLE WORK ZONE SIGNS ONLY WITH PORTABLE WORK ZONE SIGN STANDS SPECIFICALLY DESIGNED FOR ONE ANOTHER. PORTABLE WORK ZONE SIGNS MAY BE ROLL UP OR APPROVED COMPOSITE.
- PROVIDE PORTABLE WORK ZONE SIGN STANDS, PORTABLE SIGNS AND SIGN SHEETING WHICH ARE LISTED ON THE NORTH CAROLINA DEPARTMENT OF TRANSPORTATION'S APPROVED PRODUCT LIST OR ACCEPTED AS TRAFFIC QUALIFIED BY THE TRAFFIC CONTROL UNIT.
- ** TWO-WAY UNDIVIDED ADVANCE WARNING SIGN CONFIGURATION MAY BE USED ON MULTI-LANE FACILITIES WHERE CONDITIONS LIMIT THE USE OF DUAL MOUNTED SIGNS AS DETERMINED BY THE ENGINEER.

LEGEND

▣ PORTABLE SIGN

➔ DIRECTION OF TRAFFIC FLOW

APPROVED: _____ DATE: _____	DETAIL DRAWING FOR FREEWAYS WORK ZONE WARNING SIGNS	SCALE: NONE	REVISIONS
SEAL		DATE: 7-98 10/01 DWG. BY: DESIGN BY: REVIEWED BY:	10-98 09/04 01/01 11/04

05-MAR-2009 14:48
 C:\p030509\resurfacing2009\dwg\05\c202292.r-5137.r-5123.wake.us64-26\c202292.r-5137.r-5123.free4lanesgreatJuly2006.dgn
 P030509 AT 12:23:50Z