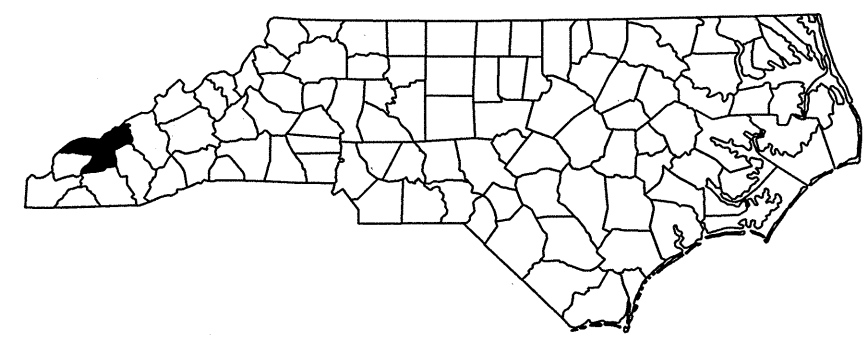
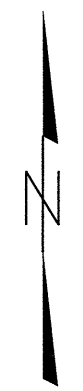
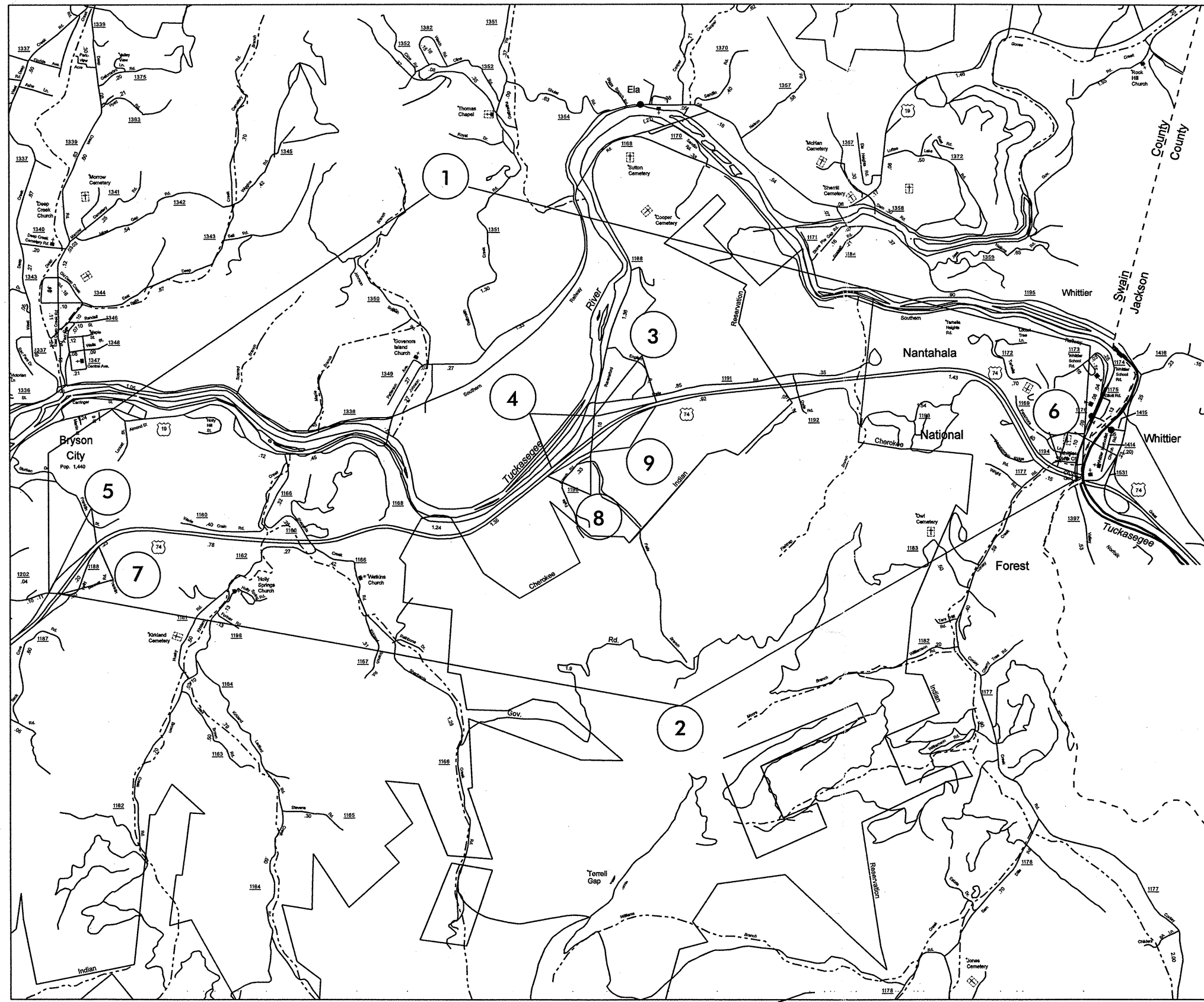


050197

2009 CONTRACT RESURFACING SWAIN COUNTY

PROJECT REFERENCE NO.		SHEET NO.
R-5145		1
STATE PROJECT	F.A. PROJECT NO.	DESCRIPTION
45045.3.S11		



*****SYTIME*****
 *****CDON*****
 *****USERNAME*****

050197

PROJECT REFERENCE NO.		SHEET NO.
R-5145		2
STATE PROJECT	F.A. PROJECT NO.	DESCRIPTION

SURFACING SCHEDULE

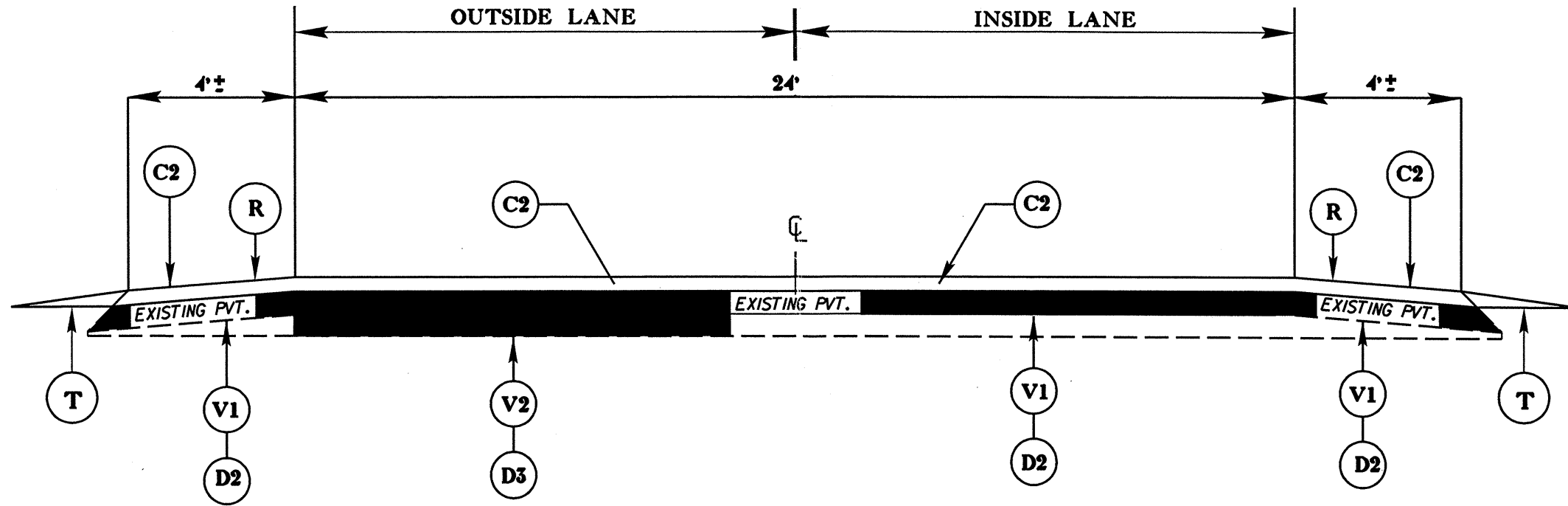
ITEM NO	DESCRIPTION
C1	ASPHALT CONCRETE SURFACE COURSE, TYPE S9.5B, AT AN AVERAGE RATE OF 168 LBS. PER SQ. YD. (1 1/2")
C2	ASPHALT CONCRETE SURFACE COURSE, TYPE S9.5C, AT AN AVERAGE RATE OF 168 LBS. PER SQ. YD (1 1/2")
D1	ASPHALT CONCRETE INTERMEDIATE COURSE, TYPE I19.0B, AT AN AVERAGE RATE OF 285 LBS PER SQ. YD. (2 1/2")
D2	ASPHALT CONCRETE INTERMEDIATE COURSE, TYPE I19.0C, AT AN AVERAGE RATE OF 285 LBS PER SQ. YD. (2 1/2")
D3	ASPHALT CONCRETE INTERMEDIATE COURSE, TYPE I19.0C, AT AN AVERAGE RATE OF 627 LBS PER SQ. YD. (5 1/2") IN LAYERS OF 342 LBS PER SQ. YD. (3") & 285 LBS PER SQ. YD. (2 1/2").
R	MILLED RUMBLE STRIPS
V1	MILLING ASPHALT PAVEMENT 2 1/2" IN DEPTH AS DIRECTED BY PROJECT ENGINEER
V2	MILLING ASPHALT PAVEMENT 5 1/2" IN DEPTH AS DIRECTED BY PROJECT ENGINEER
T	SHOULDER CONSTRUCTION WITH ABCM - SEE SPECIAL PROVISIONS

*****SYTIME*****
 *****DGN*****
 *****USERNAME*****

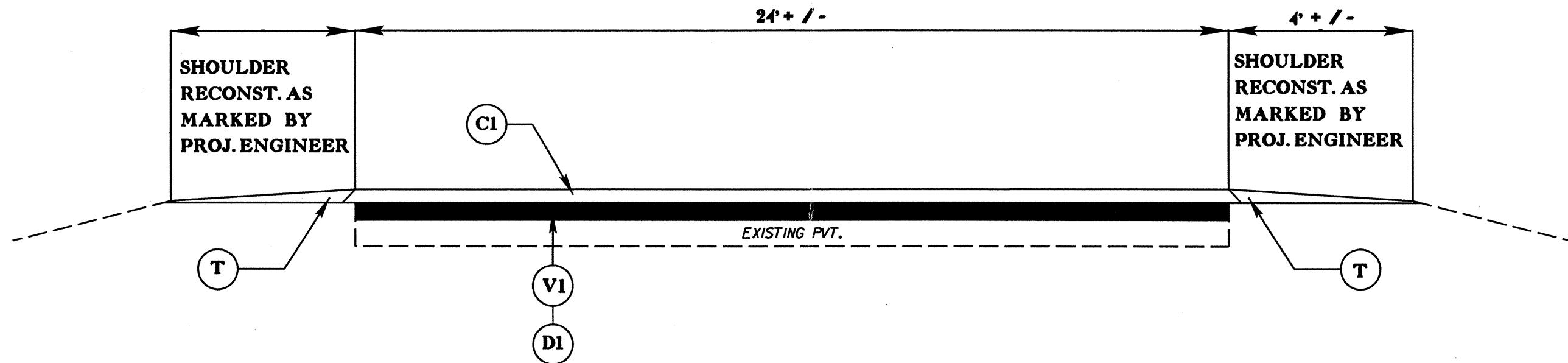
050197

PROJECT REFERENCE NO.		SHEET NO.
R-5145		3
STATE PROJECT	F.A. PROJECT NO.	DESCRIPTION

TYPICAL 1



TYPICAL 2



*****SYTIME*****
 *****RDGN*****
 *****USERNAME*****

PROJECT NO.	SHEET NO.	TOTAL NO.
R-5145, 45045.3.ST1	4	

SUMMARY OF QUANTITIES

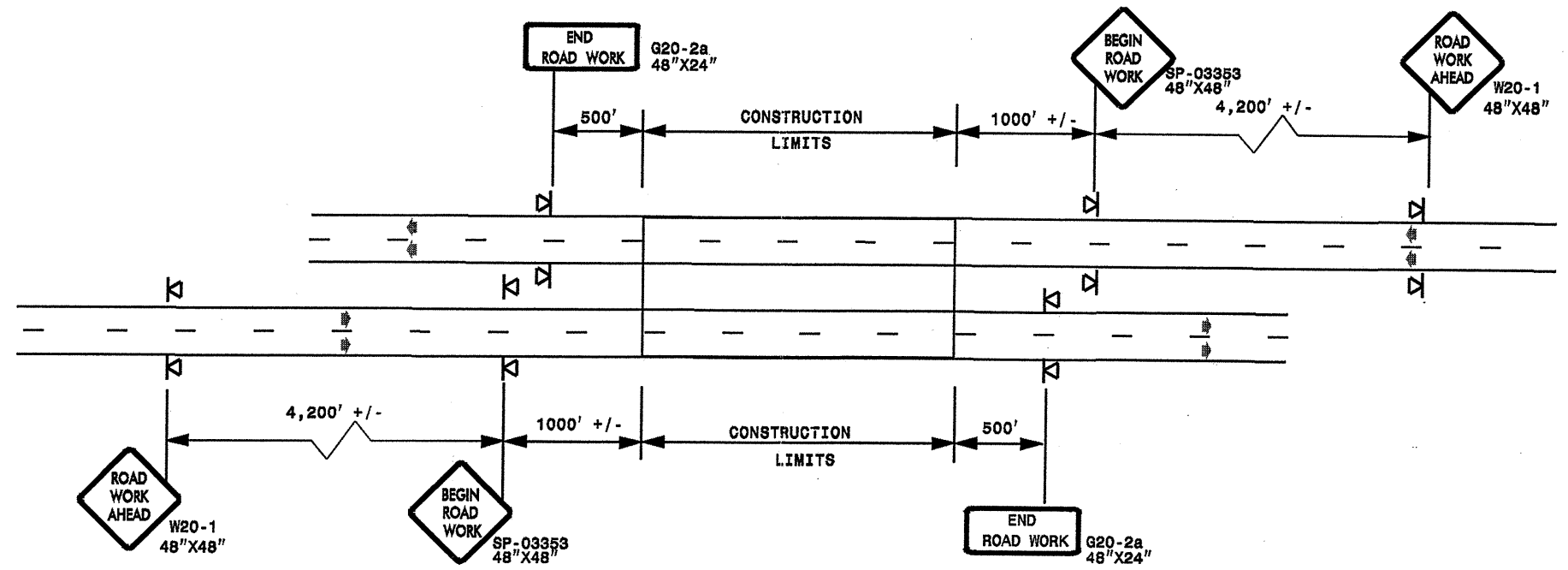
PROJECT NO	COUNTY	MAP NO	ROUTE	DESCRIPTION	TYP NO	LENGTH MI	WIDTH FT	SHOULDER RECONSTRUCTION SMI	5 1/2" MILLING SY	2 1/2" MILLING SY	INTERMEDIATE COURSE, 119.0B TONS	INTERMEDIATE COURSE, 119.0C TONS	SURFACE COURSE, S9.5B TONS	SURFACE COURSE, S9.5C TONS	PG 64-22 PLANT MIX TONS	PG 70-22 PLANT MIX TONS	MILLED RUMBLE STRIPS LF
R-5145	Swain	1	US74 WEST	FROM SR1159 TO JACKSON CO. LINE	1	4.87	32	9.76	34,285	57,141		20,591		8,633	968	518	51,427
		2	US74 EAST	FROM SR1159 TO JACKSON COUNTY LINE	1	4.84	33	9.68	34,074	59,629		19,525		8,186	918	491	51,110
		3	RAMP	WESTBOUND EXIT RAMP FROM US74 TO SR1190	2	0.31	24	0.40		3,840	558		374		49		
		4	RAMP	WESTBOUND ACCESS FROM SR1190 TO US74	2	0.44	24	0.34		4,853	705		531		65		
		5	RAMP	WESTBOUND EXIT FROM US74 TO SR1159	2	0.34	24	0.44		4,267	620		410		54		
		6	RAMP	WESTBOUND ACCESS RAMP FROM SR1531 TO US74	2	0.35	24	0.14		973	141		422		32		
		7	RAMP	EASTBOUND ACCESS RAMP FROM SR1159 @ OVERPASS TO US74	2	0.5	27	0.49		6,336	921		679		84		
		8	RAMP	EASTBOUND EXIT RAMP FROM US74 TO SR1190	2	0.29	25	0.31		3,560	517		350		45		
		9	RAMP	EASTBOUND ACCESS RAMP FROM SR1190 TO US74	2	0.52	24	0.40		6,000	872		627		79		
TOTAL FOR PROJ R-5145						12.46		21.96	68,359	146,599	4,334	40,116	3,393	16,819	2,294	1,009	102,537
GRAND TOTAL						12.46		21.96	68,359	146,599	4,334	40,116	3,393	16,819	2,294	1,009	102,537

PAINT QUANTITIES

PROJECT NO	COUNTY	MAP NO	ROUTE	DESCRIPTION	4415000000-N	4420000000-N	4430000000-N	4435000000-N	4480000000-N	4810000000-E		4820000000-E	4835000000-E	4845000000-N		4850000000-E	4905000000-N
					FLASHING ARROW PANELS, TYPE C EA	CHANGEABLE MESSAGE SIGN EA	DRUMS EA	CONES EA	TMIA EA	4" WHITE PAINT LF	4" YELLOW PAINT LF	8" WHITE PAINT LF	24" WHITE PAINT LF	PAINT LT ARROW EA	PAINT RT ARROW EA	4" LINE REMOVAL LF	SNOW PLOWABLE MARKERS EA
R-5145	Swain	1	US74 WEST	FROM SR1159 TO JACKSON CO. LINE	1	1	200	200	1	96,426	77,328	522				832	350
		2	US74 EAST	FROM SR1159 TO JACKSON COUNTY LINE	1	1	200	200	1	95,832	76,666	525				832	350
		3	RAMP	WESTBOUND EXIT RAMP FROM US74 TO SR1190						5,877	3,165						
		4	RAMP	WESTBOUND ACCESS FROM SR1190 TO US74						8,832	2,679						
		5	RAMP	WESTBOUND EXIT FROM US74 TO SR1159						6,249	489		32	1	1		
		6	RAMP	WESTBOUND ACCESS RAMP FROM SR1531 TO US74						5,544	1,095			2	2		
		7	RAMP	EASTBOUND ACCESS RAMP FROM SR1159 @ OVERPASS TO US74						12,132	6,198	270					
		8	RAMP	EASTBOUND EXIT RAMP FROM US74 TO SR1190						6,036	2,403						
		9	RAMP	EASTBOUND ACCESS RAMP FROM SR1190 TO US74						9,300	3,201						
TOTAL FOR PROJ R-5145					2	2	400	400	2	246,228	173,224	1,317	32	3	3	1,664	700
GRAND TOTAL					2	2	400	400	2	246,228	173,224	1,317	32	3	3	1,664	700

ADVANCE WORK ZONE WARNING SIGNING FOR FREEWAYS (4 LANES OR GREATER)

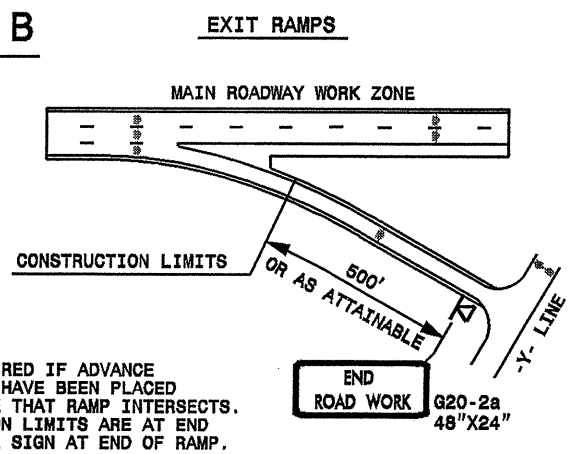
DETAIL A



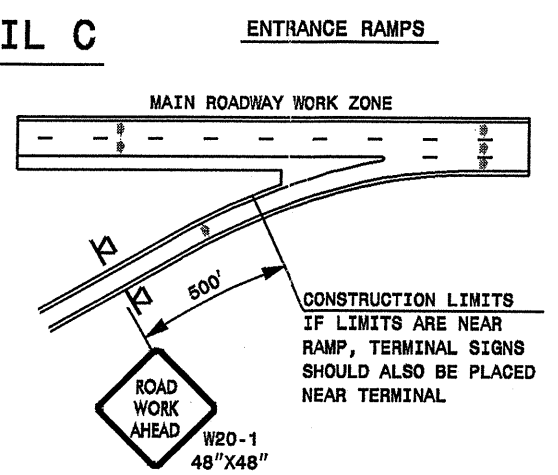
STATE OF NORTH CAROLINA
DEPT. OF TRANSPORTATION
DIVISION OF HIGHWAYS
RALEIGH, N.C.

ROADWAYS INTERSECTING ALONG FREEWAY WORK ZONE (Y-LINES)

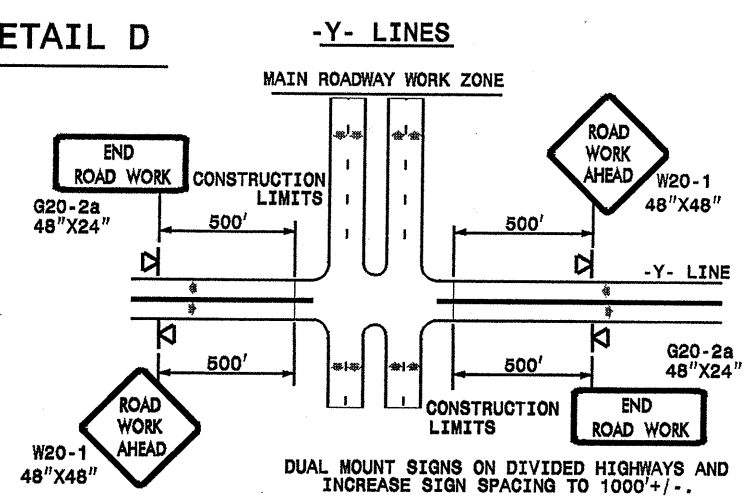
DETAIL B



DETAIL C



DETAIL D



**DETAIL DRAWING
FOR FREEWAYS
WORK ZONE WARNING SIGNS
(SHORT-DURATION LANE CLOSURES)**

GENERAL NOTES

- USE FLUORESCENT ORANGE SHEETING (TYPE VII OR HIGHER) ON ALL ADVANCE WORK ZONE SIGNS.
- DO NOT INSTALL ADVANCE WARNING SIGNS MORE THAN 3 DAYS PRIOR TO BEGINNING OF WORK.
- ALL SIGN SPACING DIMENSIONS ARE APPROXIMATE, FIELD ADJUST AS NECESSARY OR AS DIRECTED.
- USE PORTABLE WORK ZONE SIGNS ONLY WITH PORTABLE WORK ZONE SIGN STANDS SPECIFICALLY DESIGNED FOR ONE ANOTHER. PORTABLE WORK ZONE SIGNS MAY BE ROLL UP OR APPROVED COMPOSITE.
- PROVIDE PORTABLE WORK ZONE SIGN STANDS, PORTABLE SIGNS AND SIGN SHEETING WHICH ARE LISTED ON THE NORTH CAROLINA DEPARTMENT OF TRANSPORTATION'S APPROVED PRODUCT LIST OR ACCEPTED AS TRAFFIC QUALIFIED BY THE TRAFFIC CONTROL UNIT.
- ** TWO-WAY UNDIVIDED ADVANCE WARNING SIGN CONFIGURATION MAY BE USED ON MULTI-LANE FACILITIES WHERE CONDITIONS LIMIT THE USE OF DUAL MOUNTED SIGNS AS DETERMINED BY THE ENGINEER.

LEGEND

◀ PORTABLE SIGN

➔ DIRECTION OF TRAFFIC FLOW

APPROVED: _____	DATE: _____	DETAIL DRAWING FOR FREEWAYS WORK ZONE WARNING SIGNS	
SEAL			
SCALE: NONE	REVISIONS		
DATE: _____	7-98	10/01	
DWG. BY: _____	10-98	03/04	
DESIGN BY: _____	01/01	11/04	
REVIEWED BY: _____			

03-MAR-2009 11:08
 d:\v-esur facing-10508\resur facing2009\div\4\c202223_450453st1.was4cr108713x2-free4lanesgreetJuly2006.dgn
 pesymore AT WZ1237502