

**GEOPHYSICAL SURVEY AND  
PRELIMINARY SITE ASSESSMENT REPORT  
George T. Thorne, III Property  
Parcel 40  
101 North Main Street (NC 33)  
Tarboro, North Carolina  
WBS Element # 32782.1.1  
Edgecombe County**

North Carolina Department of Transportation  
Geotechnical Engineering Unit  
1589 Mail Service Center  
Raleigh, North Carolina 27699-1589

January 4, 2008

**GEOPHYSICAL SURVEY AND  
PRELIMINARY SITE ASSESSMENT REPORT**

**George T. Thorne, III Property  
Parcel 40  
101 North Main Street (NC 33)  
Tarboro, North Carolina  
Rocky Mount Northern Outer Loop  
From US 258/NC 111-122 (Mutual Boulevard)  
to SR 1308 (Albemarle Avenue)  
WBS Element # 32782.1.1  
State Project B-2965  
Edgecombe County**

**TABLE OF CONTENTS**

<u>Section</u>	<u>Subject</u>	<u>Page</u>
	Signature Page .....	ii
	Executive Summary .....	iii
1.0	Introduction.....	1
2.0	Background.....	1
3.0	Local Geology and Hydrogeology.....	2
4.0	Subsurface Investigation.....	2
	4.1 Geophysical Evaluation .....	3
	4.1.1 Ground Penetrating Radar Methodology .....	3
	4.1.2 Radio Frequency Electromagnetic Methodology.....	4
	4.1.3 Time Domain Electromagnetic Methodology .....	5
	4.1.4 Field Procedures .....	5
	4.2 Subsurface Soil Investigation .....	6
	4.3 Groundwater Investigation.....	8
5.0	Conclusions and Recommendations .....	9

Figures

- 1 Site Location Map
- 2 Site Map showing Results of Geophysical Investigation and Soil Sample Locations

Appendices

- I Soil Boring Lithologic Logs
- II Certificates of Analysis and Chain of Custody Record for Soil Samples

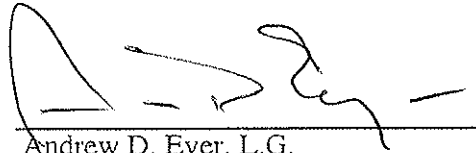
Signature Page

This document, entitled "Geophysical Survey and Preliminary Site Assessment Report," has been prepared for the George T. Thorne, III Property, Parcel 40, located at 101 North Main Street (NC 33) in Tarboro, North Carolina (WBS Element # 32782.1.1, State Project B-2965, Edgecombe County). It has been prepared by GEL Engineering of NC, Inc. in accordance with the Notice to Proceed provided by the North Carolina Department of Transportation-GeoEnvironmental Section, Geotechnical Engineering Unit for the exclusive use of the North Carolina Department of Transportation. It has been prepared in accordance with accepted quality control practices and has been reviewed by the undersigned.

GEL ENGINEERING OF NC, INC.  
*an Affiliate of The GEL Group, Inc.*



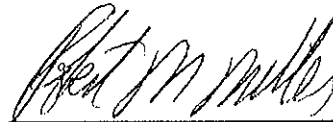
Adam B. Phillips  
Environmental Scientist I



Andrew D. Eyer, L.G.  
Senior Project Manager



1-4-08



Robert M. Miller, P.E.  
Senior Staff Engineer  
North Carolina License Number 17147

4/4/08

Date

# **GEOPHYSICAL SURVEY AND PRELIMINARY SITE ASSESSMENT REPORT**

**George T. Thorne, III Property  
Parcel 40  
101 North Main Street (NC 33)  
Tarboro, North Carolina  
Rocky Mount Northern Outer Loop  
From US 258/NC 111-122 (Mutual Boulevard)  
to SR 1308 (Albemarle Avenue)  
WBS Element # 32782.1.1  
State Project B-2965  
Edgecombe County**

## **Executive Summary**

The subject site is Parcel 40 (the George T. Thorne, III Property), located at 101 North Main Street (NC 33) in Tarboro, North Carolina. The primary purpose of this investigation was to determine the presence or absence of constituents of concern in soil and groundwater within the proposed North Carolina Department of Transportation (NCDOT) Right-of-Way (ROW) of Parcel 40 as a result of previous and/or current operations at the subject site.

Currently, the site is a flex space building. GEL Engineering of NC, Inc. (GEL) performed a geophysical evaluation and a preliminary site assessment at the subject site that included the collection and analysis of soil samples and one groundwater sample. Underground utilities were identified within the proposed NCDOT ROW during the geophysical survey, but no subsurface anomalies were identified.

Soil samples were collected for analysis from three borings constructed on the subject site. The soil samples were analyzed for diesel range organics (DRO) and gasoline range organics (GRO). Analytical results for one soil sample collected from one soil boring (SS-13) indicated DRO was detected at a concentration of 9.6 milligrams per kilogram (mg/kg). However, this does not exceed the North Carolina Department of Environment and Natural Resources (NCDENR) recommended DRO action level of 10 mg/kg. Therefore, these analytical results are not indicative of significant soil impact.

One groundwater sample was collected at soil boring location SS-15, based on elevated soil vapor measurements in the soil sample collected from the boring SS-15. Analytical results for this sample did not yield any detectable amounts of DRO or GRO,

indicating that there is no petroleum contamination in groundwater within the vicinity of SS-15.

Based on the soil and groundwater data generated from this investigation, there is no evidence that release(s) of petroleum hydrocarbon constituents of concern has occurred within the proposed NCDOT ROW at the subject site. No additional environmental investigation of potential petroleum hydrocarbon impact to the site soil is recommended at this time.

# **GEOPHYSICAL SURVEY AND PRELIMINARY SITE ASSESSMENT REPORT**

**George T. Thorne, III Property  
Parcel 40  
101 North Main Street (NC 33)  
Tarboro, North Carolina  
Rocky Mount Northern Outer Loop  
From US 258/NC 111-122 (Mutual Boulevard)  
to SR 1308 (Albemarle Avenue)  
WBS Element # 32782.1.1  
State Project B-2965  
Edgecombe County**

## **1.0 Introduction**

This document presents the details of a geophysical survey and preliminary site assessment performed within the North Carolina Department of Transportation (NCDOT) Right-of-Way (ROW) at the above referenced property (the subject site). The subject site is referenced as Parcel 40 (the George T. Thorne, III Property), located at 101 North Main Street (NC 33), northeast of the intersection of North Main Street (NC 33) and Saint Andrews Street, in Tarboro, North Carolina. The subject site is owned by George T. Thorne, III. The site is a flex space building. The site location is shown on Figure 1, an excerpt from the United States Geological Survey (USGS) 7.5-minute quadrangle map of Tarboro, North Carolina. This geophysical survey and preliminary site assessment was conducted by GEL Engineering of NC, Inc. (GEL) in accordance with the Notice to Proceed issued by the NCDOT on October 15, 2007.

The primary purpose of this investigation was to determine the presence or absence of constituents of concern in soil and groundwater within the proposed NCDOT ROW at the subject site as a result of current and/or former operations.

## **2.0 Background**

NCDOT is planning road improvements to the area in the vicinity of BR 24 over the Tar River on NC 33 (Main Street ) from US 258/NC 111-122 (Mutual Boulevard) to SR 1308 (Albemarle Avenue). NCDOT wanted to assess the subject site to evaluate the presence or absence of soil and groundwater contamination related to the current and/or former on-site operations, and the impact (if any) of these operations on the proposed road improvements. Figure 2 shows the general site layout.

### 3.0 Local Geology and Hydrogeology

The site is in a developed area of Tarboro in Edgecombe County, North Carolina. Surrounding land uses include residential and light commercial development. The site is located in the Coastal Plain physiographic province of North Carolina. The Coastal Plain consists of a wedge of mostly marine sedimentary rocks that gradually thicken to the east. The Cretaceous Cape Fear and Black Creek Formations underlie the subject site. They consist of sandstone and sandy mudstone comprised of mostly estuarine and marine deposits. These Formations are overlain by Cenozoic unconsolidated alluvial, estuarine, and marine sediments in the vicinity of the subject site.

Uppermost soils are characterized mostly of gravel, sand, and clayey sediments associated with alluvial morphology of the Tar River, including Pleistocene terraces and floodplain deposits. The United States Department of Agriculture's *Soil Survey of Edgecombe County, North Carolina* (1908) classifies the soil in the vicinity of the site as belonging to the Norfolk-Portsmouth series, which typically consists of sand and sandy loam soils. The soil encountered in the vicinity of this site during the preliminary site assessment was predominately tan/orange/white well-graded, fine-grained sand.

Groundwater was encountered during the preliminary site assessment and a groundwater assessment was performed. Groundwater was encountered at a depth of approximately 18 feet below land surface (bls). Based on the topographic map in Figure 1, the subject site is located approximately 25 feet above mean sea level (MSL).

The nearest perennial surface water body to the subject site is the Tar River. The watercourse is located approximately 100 feet south of the subject site. Based on the United States Geological Survey topographic map presented as Figure 1, the groundwater flow direction underlying the subject site is most likely southerly towards the Tar River.

### 4.0 Subsurface Investigation

To determine the presence or absence of impact to subsurface soil at the subject site, GEL performed a limited site assessment that consisted of the following tasks:

- Performance of a geophysical evaluation to identify the presence or absence of underground storage tanks (USTs) and associated appurtenances, and other underground anomalies, including utilities, at the subject site and their locations.
- Soil vapor screening of soil samples from subsurface soil borings to determine the potential presence or absence of soil impact from petroleum constituents of concern.

- Laboratory analysis of collected soil samples.

The details of these tasks are discussed in the following sections.

#### **4.1 Geophysical Evaluation**

The geophysical investigation included the deployment of ground penetrating radar technology, radio frequency electromagnetic technology, and time domain electromagnetic technology to the site. These technologies were used in concert with one another in order to identify subsurface metallic anomalies and, in particular, to identify the presence of underground storage tanks (USTs) on-site. A brief description of each technology is presented in the following paragraphs followed by a discussion of the results of the geophysical investigation.

##### **4.1.1 Ground Penetrating Radar Methodology**

A RAMAC digital radar control system configured with a 250 Megahertz (MHz) antenna array was used in this investigation. Ground Penetrating Radar (GPR) is an electromagnetic geophysical method that detects interfaces between subsurface materials with differing dielectric constants. The GPR system consists of an antenna that houses the transmitter and receiver, a digital control unit that both generates and digitally records the GPR data, and a color video monitor to view data as they are collected in the field.

The transmitter radiates repetitive short-duration electromagnetic waves (at radar frequencies) into the earth from an antenna moving across the ground surface. These radar waves are reflected back to the receiver from the interface of materials with different dielectric constants. The intensity of the reflected signal is a function of the contrast in the dielectric constant between the materials, the conductivity of the material through which the wave is traveling, and the frequency of the signal. Subsurface features that commonly cause such reflections are: 1) natural geologic conditions, such as changes in sediment composition, bedding, and cementation horizons and voids; or 2) unnatural changes to the subsurface, such as disturbed soils, soil backfill, buried debris, tanks, pipelines, and utilities. The digital control unit processes the signal from the receiver and produces a continuous cross-section of the subsurface interface reflection events.

GPR data profiles are collected along transects, which are measured paths along which the GPR antenna is moved. During an investigation, marks are placed in the data by the operator at designated points along the GPR transects or with a survey wheel



odometer. These marks allow for a correlation between the GPR data and the position of the GPR antenna on the ground.

Depth of investigation of the GPR signal is highly site-specific and is limited by signal attenuation (absorption) in the subsurface materials. Signal attenuation is dependent on the electrical conductivity of the subsurface materials. Signal attenuation is greatest in materials with relatively high electrical conductivities, such as clays, brackish groundwater, or groundwater with a high dissolved solid content from natural or man-made sources. Signal attenuation is lowest in relatively low-conductivity materials, such as dry sand or rock. Depth of investigation is also dependent on the antenna's transmitting frequency. Depth of investigation generally increases as transmitting frequency decreases; however, the ability to resolve smaller subsurface features is diminished as frequency is decreased.

The GPR antenna used at this site is internally shielded from aboveground interference sources. Accordingly, the GPR response is not affected by overhead power lines, metallic buildings, or nearby objects.

#### **4.1.2 Radio Frequency Electromagnetic Methodology**

A Radio Detection RD4000PXL2 unit was used in this investigation. Radio Frequency Electromagnetic (EM) utility locating equipment consists of a transmitter and a dual-function receiver. The receiver can be operated in a “passive” mode or in an “active” mode. The two modes of operation provide various levels of detection capabilities depending on the specific target or application.

The system is operated in the “active” mode by either inducing or conducting a signal into the underground utility to be traced. A transmitter is placed over and in line with a suspected buried utility. The transmitter induces a signal that propagates along the buried utility. As the receiver is moved back and forth across the suspected path of the utility, the trace signal induces a signal into the receiver's coil sensor. A visual and audio response indicates when the receiver is directly over the buried utility. Another means of detecting in the “active” mode utilizes a method to “conduct” a signal within the buried utility. To accomplish this, a cable from the transmitter is clamped onto an exposed section of the buried utility and a signal propagates along the buried line. This technique minimizes any interference caused by parasitic emissions from adjacent cables in congested areas. When the system is utilized in the “passive” mode, the receiver is responding to a 60-Hertz cycle current energized by underground utilities.

Interference can and may occur when buried utilities intersect or are adjacent to each other. This effect, referred to as “bleed-off,” may provide a false response to the identification of the tracked utility. “Bleed-off” is caused by utilities that may be energized in the “active” or “passive” mode.

#### **4.1.3 Time Domain Electromagnetic Methodology**

The Time Domain Electromagnetic (TDEM) methods measure the electrical conductivity of subsurface materials. The conductivity is determined by inducing (from a transmitter) a time or frequency-varying magnetic field and measuring (with a receiver) the amplitude and phase shift of an induced secondary magnetic field. The secondary magnetic field is created by subsurface conductive materials behaving as an inductor as the primary magnetic field is passed through them.

The Geonics EM-61 system used in this investigation operates within these principles. However, the EM-61 TDEM system can discriminate between moderately conductive earth materials and very conductive metallic targets. The EM-61 consists of a portable coincident loop time domain transmitter and receiver with a 0.5-meter by 1.0-meter coil system. The EM-61 generates 150 pulses per second and measures the response from the ground after transmission or between pulses. The secondary EM responses from metallic targets are of longer duration than those created by conductive earth materials. By recording the later time EM arrivals, only the response from metallic targets is measured, rather than the field generated by the earth material.

#### **4.1.4 Field Procedures**

The GPR, EM, and TDEM field investigation was performed on October 29-30, 2007. A GPR system time range setting of 90 nanoseconds (ns) was used during the entire investigation. This range was determined after a series of test lines were conducted to evaluate the GPR response in the local geologic section. A preliminary interpretation of the GPR data was conducted in the field and potential utilities were marked on the ground. Following the completion of the fieldwork, the data were post-processed and analyzed in more detail. GPR data processing typically included band pass filtering, background removal, horizontal smoothing, and gain adjustments.

EM was used to scan the project site using both the passive (detecting 60-Hertz cycles from active electrical lines or induced 60-Hertz cycles on other metallic lines) and active modes (putting a traceable signal on utilities at points where the utility ties into above ground installations or inducing a traceable signal from the surface). TDEM was

also used to scan the project site. Electromagnetic anomalies indicative of buried metallic objects were marked in the field. Marked utilities, grid corners, buried metallic objects, and other reference points were surveyed with a surveying instrument (Trimble Geodimeter 600).

As shown on Figure 2, underground utilities were identified on the subject site during the investigation, and no on-site subsurface anomalies were identified. Utilities below the maximum penetration depth were not detected with GPR.

#### **4.2 Subsurface Soil Investigation**

To determine the presence or absence of impact to subsurface soil by constituents of concern, GEL collected soil samples from three subsurface soil borings at the subject site on November 7, 2007, for analysis. Soil borings SS-13 through SS-15 were constructed within the subject site. The locations of soil borings SS-13 through SS-15 are shown on Figure 2, and the longitude and latitude coordinates for the boring locations are listed in the table below. The borings were located in areas on the site where there appeared to be a potential of soil impact based on on-site activities and in other areas that are representative of the subject site. No surface staining was observed during sampling activities.

All borings were advanced to a total depth of 8 feet bls. Soil samples were collected at 3-4 feet, 5-6 feet, and 7-8 feet bls from each borehole. All soil samples were inspected for indications of impact by constituents of concern including petroleum hydrocarbons, such as odors, discoloration, or visible sheen. This sampling was accomplished using direct push technology (DPT) provided by Regional Probing Services of Wake Forest, North Carolina (Regional Probing). Soil boring lithologic logs are attached as Appendix I of this document. No groundwater was encountered during construction of the borings.

The soil samples were screened for the presence of organic vapors using a portable photoionization detector (PID). The PID measures the concentration of organic compounds in the vapor space above a soil sample resulting from volatilization of organic compounds contained in the soil. To screen the soils, each sample was placed in a clean, resealable polyethylene bag. The bag was sealed, and the sample was allowed to equilibrate for approximately 5 minutes, after which time a small opening was made in the bag. The probe of the PID was then inserted into the bag, and the airspace above the soil was screened for organic vapors.

To assess the subsurface soil quality, one soil sample was collected from each soil boring at the sampled depth interval with the highest PID reading and submitted for laboratory analysis. The depth intervals and PID measurements of the collected soil samples submitted to the laboratory for analysis are listed below.

**Summary of Location Data and PID Measurements  
for Soil Samples Collected for Analysis**

<b>Soil Boring</b>	<b>Depth Interval of Soil Sample Collected for Analysis (feet bls)</b>	<b>PID Reading (ppm)</b>	<b>Latitude/Longitude (NAD83)</b>
SS-13	5-6	12.8	35°53'41.89"N / 77°31'57.79"W
SS-14	3-4	10.0	35°53'41.82"N / 77°31'58.37"W
SS-15	5-6	5.8	35°53'41.96"N / 77°31'58.66"W

Notes:

- 1) Coordinates are based on North American Datum of 1983 (NAD83)
- 2) bls = below land surface
- 3) PID = photoionization detector
- 4) ppm = parts per million

Following completion of the sampling activities, all borings were abandoned by filling the boreholes with hydrated bentonite, and topped with asphalt patching, as required. Soil samples were submitted to Pace Analytical Service, Inc. in Huntersville, North Carolina (North Carolina Certification No. 37706) for analysis of diesel range organics (DRO) by EPA Method 8015 with EPA Method 3545 sample preparation, and gasoline range organics (GRO) by EPA Method 8015 with EPA Method 5035A/5030B sample preparation. The analytical results are summarized in the following table and are included on the Certificates of Analysis provided in Appendix II.

**Summary of Analytical Results for Soil Samples**

<b>Soil Sample</b>	<b>Depth Interval of Soil Sample Collected for Analysis (feet bls)</b>	<b>DRO</b>	<b>GRO</b>
SS-13	5-6	9.6	ND
SS-14	3-4	ND	ND
SS-15	5-6	ND	ND
<b>NCDENR Action Level</b>		<b>10*</b>	<b>10</b>

Notes:

- 1) ND = Not Detected
- 2) Concentrations shown are in milligram per kilogram (mg/kg).
- 3) **Bold** = detected concentration above the NCDENR action level
- 4) \* = Recommended action level for DRO. Currently the enforced NCDENR action level is 40 mg/kg.

GRO was not detected in any of the three soil samples collected at the site. Analytical results for one soil sample collected from one soil boring (SS-13) indicated DRO was detected at a concentration of 9.6 milligrams per kilogram (mg/kg). However, this does not exceed the NCDENR recommended DRO action level of 10 mg/kg. Therefore, these analytical results are not indicative of significant soil impact. No soil staining or odors were observed during the construction of the three borings.

**4.3 Groundwater Investigation**

GEL collected one groundwater sample at the subject site (SS-15-GW) to determine if groundwater has been impacted by constituents of concern. Groundwater sample SS-15-GW was collected after soil boring location SS-15 was converted to a temporary groundwater monitoring well, as shown in Figure 2. Groundwater sample SS-15-GW was collected at this location based on historical data that indicate that a gasoline UST was previously located on the subject site.

Regional Probing collected the groundwater sample using DPT. To collect the groundwater sample, the DPT probe was advanced to a depth slightly below the water table, which was encountered at a depth of approximately 18 feet bls. The DPT probe was then retracted while an internal PVC slotted screen was released from the bottom of the probe. The groundwater samples were collected from within the slotted screen using new Teflon<sup>®</sup> tubing and a peristaltic pump. The collected groundwater samples were submitted to Pace Analytical Service, Inc. for analysis of DRO by EPA Method 8015 with EPA Method 3510 sample preparation and GRO by EPA Method 8015 with EPA

Method 5030 sample preparation. The analytical results for SS-15-GW indicate that no DRO or GRO constituents were detected. Therefore, groundwater impact in the vicinity of boring SS-15 is not suspected, based on the data collected.

## **5.0 Conclusions and Recommendations**

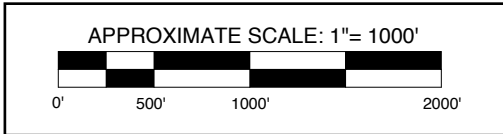
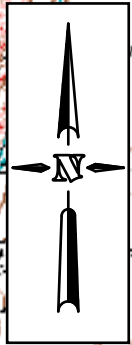
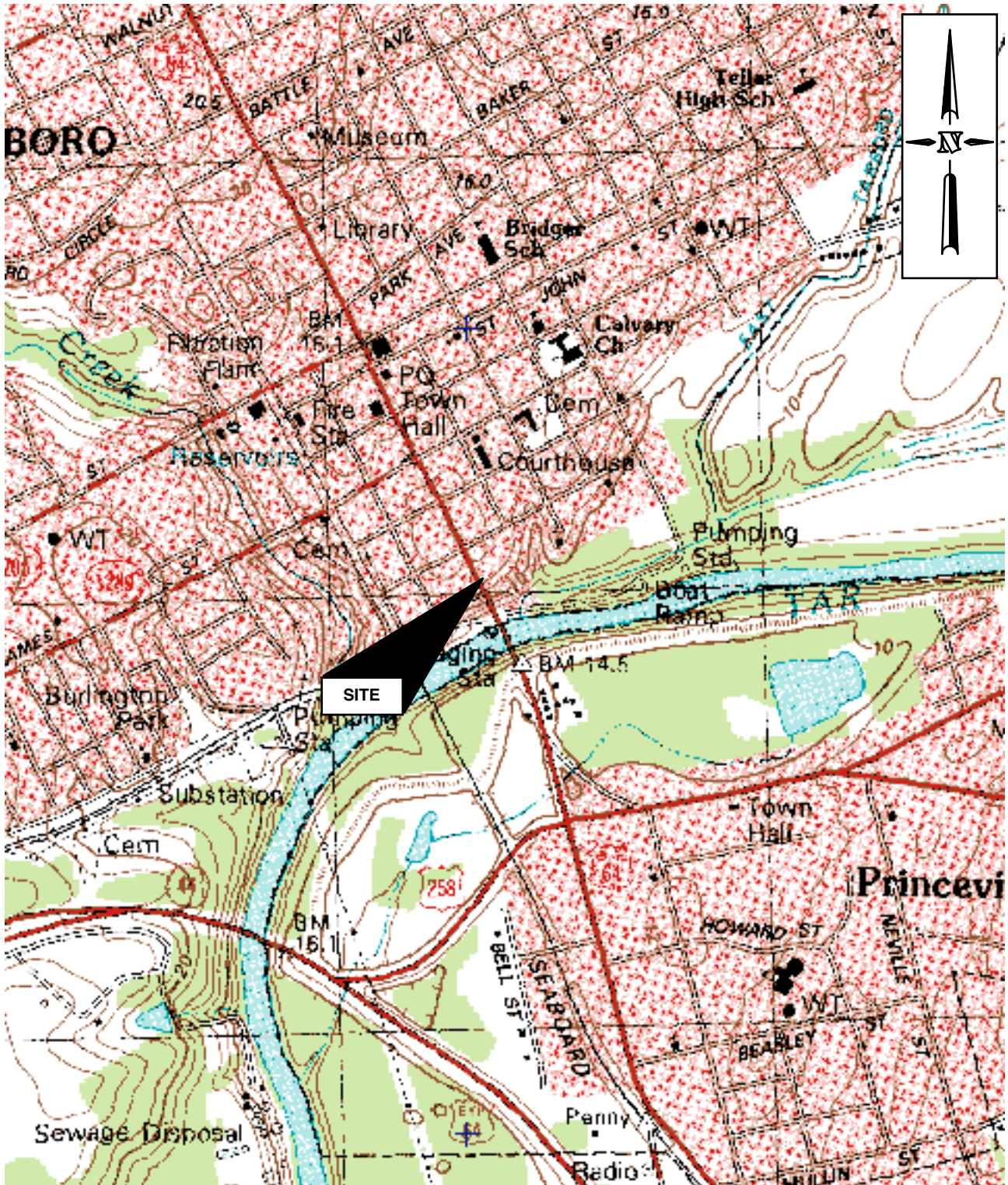
GEL performed a geophysical evaluation and a preliminary site assessment to determine the presence or absence of impact to subsurface soil by petroleum constituents of concern within the proposed NCDOT ROW at the subject site. Underground utilities were identified within the proposed ROW, but no subsurface anomalies were identified during the geophysical survey.

Soil samples were collected for analysis from three borings constructed on the subject site. The soil samples were analyzed for DRO and GRO. Analytical results for one soil sample collected from one soil boring (SS-13) detected DRO at a concentration of 9.6 mg/kg. However, this does not exceed the NCDENR recommended DRO action level of 10 mg/kg.

One groundwater sample was collected at soil boring location SS-15, based on historical data that indicate that a gasoline UST was previously located on the subject site. Analytical results for this sample did not indicate any detectable amounts of DRO or GRO. Therefore, there is no indication of petroleum contamination in groundwater within the vicinity of boring SS-15.

Based on the data generated from this investigation, there is no evidence that a significant widespread release(s) of constituents of concern has occurred within the proposed NCDOT ROW at the subject site. No additional environmental investigation of the site soil or groundwater is recommended at this time.





MAP TAKEN FROM USGS 7.5-MINUTE QUADRANGLE FOR TARBORO, NC

GEL Engineering OF NC, Inc.  
an Affiliate of THE GEL GROUP, Inc.



Post Office Box 14262  
Research Triangle Park, NC 27709  
(919) 544-1100

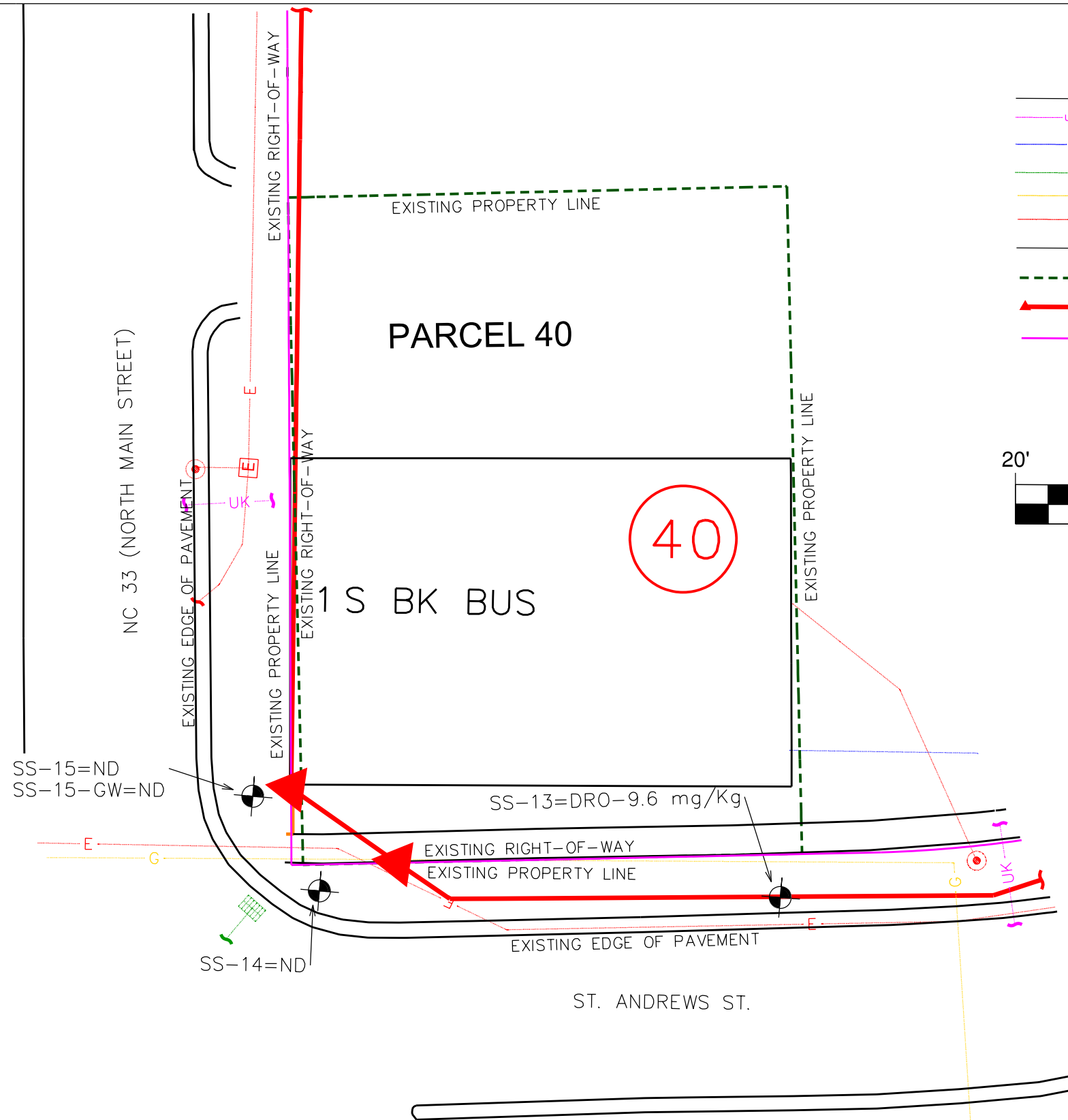
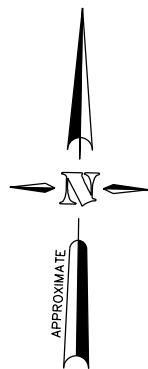
PROJECT: ncdt00907c  
GEOPHYSICAL SURVEY AND  
PRELIMINARY SITE ASSESSMENT  
GEORGE T. THORNE PROPERTY  
PARCEL 40  
101 NORTH MAIN STREET (NC 33)  
TARBORO, NORTH CAROLINA  
WBS ELEMENT # 32782.1.1

DATE: JANUARY 4, 2008

DRAWN BY: ABP APPRV. BY: RMM

SITE LOCATION  
MAP

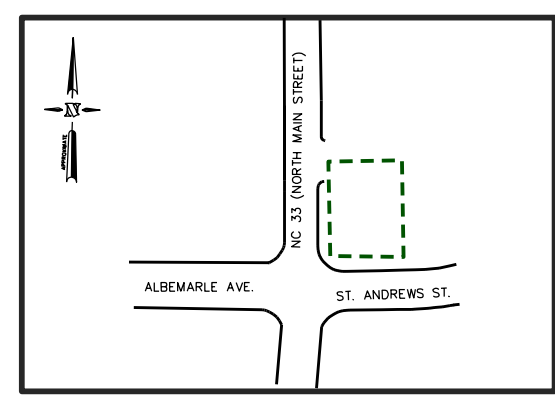
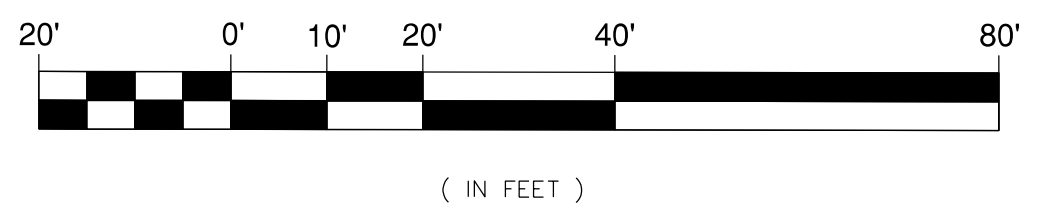
FIGURE  
1



LEGEND

- |  |                               |  |                          |
|--|-------------------------------|--|--------------------------|
|  | UNKNOWN SUBSURFACE UTILITY    |  | POWER POLE               |
|  | WATER SUBSURFACE UTILITY      |  | ELECTRIC PULLBOX         |
|  | STORMDRAIN SUBSURFACE UTILITY |  | WATER METER              |
|  | GAS SUBSURFACE UTILITY        |  | STORM DRAIN DROP INLET   |
|  | ELECTRIC SUBSURFACE UTILITY   |  | SOIL BORING LOCATION     |
|  | END OF DESIGNATION            |  | DIESEL RANGE ORGANICS    |
|  | PROPERTY BOUNDARY             |  | GRO AND DRO NOT DETECTED |
|  | PROPOSED RIGHT-OF-WAY         |  | MILLIGRAMS PER KILOGRAM  |
|  | EXISTING RIGHT-OF-WAY         |  |                          |

GRAPHIC SCALE



KEY MAP (NOT TO SCALE)

GEL Engineering of NC, Inc.  
an Affiliate of THE GEL GROUP, Inc.



P.O. BOX 14262  
RESEARCH TRIANGLE  
PARK, NC 27709  
(919) 544-1100

PROJECT: ncdt00907c

GEOPHYSICAL INVESTIGATION AND PRELIMINARY  
SITE ASSESSMENT  
ROCKY MOUNT NORTHERN OUTER LOOP  
TARBORO, NORTH CAROLINA

DATE: JANUARY 4, 2008

SITE MAP SHOWING THE  
RESULTS OF GEOPHYSICAL INVESTIGATION AND  
SOIL BORING LOCATIONS (GEORGE T. THORNE  
PROPERTY)

DRAWN BY: DKB

APPRV. BY: RMM

FIGURE

2



**APPENDIX I**

**SOIL BORING LITHOLOGIC LOGS**

## SOIL BORING LOG

Boring/Well No.: **SS-13 (Tarboro)**

Date Started: 11/07/07

Date Completed: 11/07/07

No.	Depth Interval	Blow Counts	PID (ppm)	Soil Description	Soil Type
1	0.0' – 4.0'	--	8.3	Black sandy silt to tan/yellow sandy clay; highly plastic, no odor.	SC
2	4.0' – 5.0'	--		Tan/yellow sandy clay (plastic) to well-graded yellow sand; no odor.	SC
3	5.0' – 6.0'	--	12.8	Same	SC
4	6.0' – 7.0'	--		Tan sandy clay to yellow/white well graded sand; no odor.	SW
5	7.0' – 8.0'	--	5.6	Same	SW
6				Total depth = 8 feet below land surface	
7					
8					
9					
10					
11					
12					

**Notes:**

- 1) 4-foot continuous cores using DPT.
- 2) PID readings shown are for discrete samples collected at indicated depth intervals.

## SOIL BORING LOG

Boring/Well No.: **SS-14 (Tarboro)**

Date Started: 11/07/07

Date Completed: 11/07/07

No.	Depth Interval	Blow Counts	PID (ppm)	Soil Description	Soil Type
1	0.0' – 4.0'	--	10.0	Orange silty clay (highly plastic) to grey/orange sandy clay; no odor.	SC
2	4.0' – 5.0'	--		Orange silty clay to tan sandy clay; plastic, no odor.	SC
3	5.0' – 6.0'	--	6.2	Same	SC
4	6.0' – 7.0'	--		Tan/white clayey sand to well graded white sand; no odor.	SW
5	7.0' – 8.0'	--	3.0	Same	SW
6				Total depth = 8 feet below land surface	
7					
8					
9					
10					
11					
12					

**Notes:**

- 1) 4-foot continuous cores using DPT.
- 2) PID readings shown are for discrete samples collected at indicated depth intervals.

## SOIL BORING LOG

Boring/Well No.: **SS-15 (Tarboro)**

Date Started: 11/07/07

Date Completed: 11/07/07

No.	Depth Interval	Blow Counts	PID (ppm)	Soil Description	Soil Type
1	0.0' – 4.0'	--	5.1	Well graded yellow sand to tan sandy clay; plastic, no odor.	SC
2	4.0' – 5.0'	--		Tan to yellow sandy clay; plastic, no odor.	SC
3	5.0' – 6.0'	--	5.8	Same	SC
4	6.0' – 7.0'	--		Yellow sandy clay to yellow clayey sand; damp, no odor.	SC
5	7.0' – 8.0'	--	5.3	Same	SC
6				Total depth = 8 feet below land surface	
7					
8					
9					
10					
11					
12					

Notes:

- 1) 4-foot continuous cores using DPT.
- 2) PID readings shown are for discrete samples collected at indicated depth intervals.

**APPENDIX II**

**CERTIFICATES OF ANALYSIS AND  
CHAIN OF CUSTODY RECORD FOR SOIL SAMPLES**

November 26, 2007

Mr. Bob Miller  
General Engineering  
PO Box 14262  
Research Triangle, NC 27709

RE: Project: NCDOT 00907/WSB#32782.1.1  
Pace Project No.: 927329

Dear Mr. Miller:

Enclosed are the analytical results for sample(s) received by the laboratory between November 07, 2007 and November 09, 2007. The results relate only to the samples included in this report. Results reported herein conform to the most current NELAC standards, where applicable, unless otherwise narrated in the body of the report.

Inorganic Wet Chemistry and Metals analyses were performed at our Pace Asheville laboratory and Organic testing was performed at our Pace Huntersville laboratory unless otherwise footnoted. All Microbiological analyses were performed at the laboratory where the samples were received.

If you have any questions concerning this report, please feel free to contact me.

Sincerely,



Annette Scott

annette.scott@pacelabs.com  
Project Manager

Enclosures

cc: Mr. Christopher Peoples, NCDOT- Materials & Test Unit

## REPORT OF LABORATORY ANALYSIS

Page 1 of 52

This report shall not be reproduced, except in full,  
without the written consent of Pace Analytical Services, Inc..



## CERTIFICATIONS

Project: NCDOT 00907/WSB#32782.1.1

Pace Project No.: 927329

---

### Charlotte Certification IDs

Florida/NELAP Certification Number: E87627

Kansas Certification Number: E-10364

Louisiana/LELAP Certification Number: 04034

North Carolina Drinking Water Certification Number: 37706

North Carolina Wastewater Certification Number: 12

North Carolina Field Services Certification Number: 5342

South Carolina Certification Number: 990060001

South Carolina Bioassay Certification Number: 990060003

Tennessee Certification Number: 04010

Virginia Certification Number: 00213

---

### Asheville Certification IDs

Florida/NELAP Certification Number: E87648

Louisiana/LELAP Certification Number: 03095

New Jersey Certification Number: NC011

North Carolina Drinking Water Certification Number: 37712

North Carolina Wastewater Certification Number: 40

North Carolina Bioassay Certification Number: 9

Pennsylvania Certification Number: 68-03578

South Carolina Certification Number: 99030001

South Carolina Bioassay Certification Number: 99030002

Tennessee Certification Number: 2980

Virginia Certification Number: 00072

---

### Eden Certification IDs

North Carolina Drinking Water Certification Number: 37738

Virginia Drinking Water Certification Number: 00424

North Carolina Wastewater Certification Number: 633

---

## REPORT OF LABORATORY ANALYSIS

This report shall not be reproduced, except in full,  
without the written consent of Pace Analytical Services, Inc..

## ANALYTICAL RESULTS

Project: NCDOT 00907/WSB#32782.1.1

Pace Project No.: 927329

**Sample: SS-12-5**      **Lab ID: 927329001**      Collected: 11/06/07 12:30      Received: 11/07/07 15:55      Matrix: Solid

**Results reported on a "dry-weight" basis**

Parameters	Results	Units	Report Limit	DF	Prepared	Analyzed	CAS No.	Qual
<b>8015 GCS THC-Diesel for ASE</b>		Analytical Method: EPA 8015 Modified    Preparation Method: EPA 3545						
Diesel Components	ND	mg/kg	5.4	1	11/10/07 00:00	11/13/07 14:58	68334-30-5	
n-Pentacosane (S)	54	%	50-135	1	11/10/07 00:00	11/13/07 14:58	629-99-2	
<b>Gasoline Range Organics</b>		Analytical Method: EPA 8015 Modified    Preparation Method: EPA 5035A/5030B						
Gasoline Range Organics	ND	mg/kg	7.2	1	11/09/07 10:34	11/09/07 19:53	8006-61-9	
4-Bromofluorobenzene (S)	104	%	50-135	1	11/09/07 10:34	11/09/07 19:53	460-00-4	
<b>Percent Moisture</b>		Analytical Method: ASTM D2974-87						
Percent Moisture	7.9	%	0.10	1		11/08/07 14:03		



## ANALYTICAL RESULTS

Project: NCDOT 00907/WSB#32782.1.1

Pace Project No.: 927329

**Sample: SS-13-3**      **Lab ID: 927329002**      Collected: 11/06/07 12:45      Received: 11/07/07 15:55      Matrix: Solid

**Results reported on a "dry-weight" basis**

Parameters	Results	Units	Report Limit	DF	Prepared	Analyzed	CAS No.	Qual
<b>8015 GCS THC-Diesel for ASE</b>		Analytical Method: EPA 8015 Modified    Preparation Method: EPA 3545						
Diesel Components	ND	mg/kg	5.9	1	11/10/07 00:00	11/13/07 02:53	68334-30-5	
n-Pentacosane (S)	56	%	50-135	1	11/10/07 00:00	11/13/07 02:53	629-99-2	
<b>Gasoline Range Organics</b>		Analytical Method: EPA 8015 Modified    Preparation Method: EPA 5035A/5030B						
Gasoline Range Organics	ND	mg/kg	5.4	1	11/09/07 10:34	11/09/07 20:54	8006-61-9	
4-Bromofluorobenzene (S)	95	%	50-135	1	11/09/07 10:34	11/09/07 20:54	460-00-4	
<b>Percent Moisture</b>		Analytical Method: ASTM D2974-87						
Percent Moisture	<b>15.7</b>	%	0.10	1		11/08/07 14:03		

## ANALYTICAL RESULTS

Project: NCDOT 00907/WSB#32782.1.1

Pace Project No.: 927329

**Sample: SS-14-7**      **Lab ID: 927329003**      Collected: 11/06/07 13:00      Received: 11/07/07 15:55      Matrix: Solid

**Results reported on a "dry-weight" basis**

Parameters	Results	Units	Report Limit	DF	Prepared	Analyzed	CAS No.	Qual
<b>8015 GCS THC-Diesel for ASE</b>		Analytical Method: EPA 8015 Modified    Preparation Method: EPA 3545						
Diesel Components	ND	mg/kg	5.9	1	11/10/07 00:00	11/13/07 03:18	68334-30-5	
n-Pentacosane (S)	53	%	50-135	1	11/10/07 00:00	11/13/07 03:18	629-99-2	
<b>Gasoline Range Organics</b>		Analytical Method: EPA 8015 Modified    Preparation Method: EPA 5035A/5030B						
Gasoline Range Organics	ND	mg/kg	6.4	1	11/09/07 10:34	11/09/07 21:15	8006-61-9	
4-Bromofluorobenzene (S)	95	%	50-135	1	11/09/07 10:34	11/09/07 21:15	460-00-4	
<b>Percent Moisture</b>		Analytical Method: ASTM D2974-87						
Percent Moisture	<b>15.4</b>	%	0.10	1		11/08/07 14:04		

## ANALYTICAL RESULTS

Project: NCDOT 00907/WSB#32782.1.1

Pace Project No.: 927329

**Sample: SS-15-5**      **Lab ID: 927329004**      Collected: 11/06/07 13:15      Received: 11/07/07 15:55      Matrix: Solid

**Results reported on a "dry-weight" basis**

Parameters	Results	Units	Report Limit	DF	Prepared	Analyzed	CAS No.	Qual
<b>8015 GCS THC-Diesel for ASE</b>		Analytical Method: EPA 8015 Modified    Preparation Method: EPA 3545						
Diesel Components	ND	mg/kg	6.0	1	11/10/07 00:00	11/13/07 03:18	68334-30-5	
n-Pentacosane (S)	70	%	50-135	1	11/10/07 00:00	11/13/07 03:18	629-99-2	
<b>Gasoline Range Organics</b>		Analytical Method: EPA 8015 Modified    Preparation Method: EPA 5035A/5030B						
Gasoline Range Organics	ND	mg/kg	8.7	1	11/09/07 10:34	11/09/07 21:35	8006-61-9	
4-Bromofluorobenzene (S)	97	%	50-135	1	11/09/07 10:34	11/09/07 21:35	460-00-4	
<b>Percent Moisture</b>		Analytical Method: ASTM D2974-87						
Percent Moisture	<b>16.3</b>	%	0.10	1		11/08/07 14:04		

## ANALYTICAL RESULTS

Project: NCDOT 00907/WSB#32782.1.1

Pace Project No.: 927329

**Sample: SS-17-5**      **Lab ID: 927329005**      Collected: 11/06/07 13:55      Received: 11/07/07 15:55      Matrix: Solid

**Results reported on a "dry-weight" basis**

Parameters	Results	Units	Report Limit	DF	Prepared	Analyzed	CAS No.	Qual
<b>8015 GCS THC-Diesel for ASE</b>		Analytical Method: EPA 8015 Modified    Preparation Method: EPA 3545						
Diesel Components	ND	mg/kg	5.8	1	11/10/07 00:00	11/13/07 03:44	68334-30-5	
n-Pentacosane (S)	64	%	50-135	1	11/10/07 00:00	11/13/07 03:44	629-99-2	
<b>Gasoline Range Organics</b>		Analytical Method: EPA 8015 Modified    Preparation Method: EPA 5035A/5030B						
Gasoline Range Organics	ND	mg/kg	5.5	1	11/09/07 10:34	11/09/07 21:56	8006-61-9	
4-Bromofluorobenzene (S)	94	%	50-135	1	11/09/07 10:34	11/09/07 21:56	460-00-4	
<b>Percent Moisture</b>		Analytical Method: ASTM D2974-87						
Percent Moisture	<b>14.5</b>	%	0.10	1		11/08/07 14:04		

## ANALYTICAL RESULTS

Project: NCDOT 00907/WSB#32782.1.1

Pace Project No.: 927329

**Sample: SS-3-5**      **Lab ID: 927329006**      Collected: 11/06/07 14:25      Received: 11/07/07 15:55      Matrix: Solid

**Results reported on a "dry-weight" basis**

Parameters	Results	Units	Report Limit	DF	Prepared	Analyzed	CAS No.	Qual
<b>8015 GCS THC-Diesel for ASE</b>		Analytical Method: EPA 8015 Modified    Preparation Method: EPA 3545						
Diesel Components	ND	mg/kg	5.6	1	11/10/07 00:00	11/13/07 03:44	68334-30-5	
n-Pentacosane (S)	68	%	50-135	1	11/10/07 00:00	11/13/07 03:44	629-99-2	
<b>Gasoline Range Organics</b>		Analytical Method: EPA 8015 Modified    Preparation Method: EPA 5035A/5030B						
Gasoline Range Organics	ND	mg/kg	5.9	1	11/09/07 10:34	11/09/07 22:16	8006-61-9	
4-Bromofluorobenzene (S)	96	%	50-135	1	11/09/07 10:34	11/09/07 22:16	460-00-4	
<b>Percent Moisture</b>		Analytical Method: ASTM D2974-87						
Percent Moisture	11.4	%	0.10	1		11/08/07 14:04		

## ANALYTICAL RESULTS

Project: NCDOT 00907/WSB#32782.1.1

Pace Project No.: 927329

**Sample: SS-2-3**      **Lab ID: 927329007**      Collected: 11/06/07 14:45      Received: 11/07/07 15:55      Matrix: Solid

**Results reported on a "dry-weight" basis**

Parameters	Results	Units	Report Limit	DF	Prepared	Analyzed	CAS No.	Qual
<b>8015 GCS THC-Diesel for ASE</b>		Analytical Method: EPA 8015 Modified    Preparation Method: EPA 3545						
Diesel Components	ND	mg/kg	5.7	1	11/10/07 00:00	11/13/07 04:10	68334-30-5	
n-Pentacosane (S)	65	%	50-135	1	11/10/07 00:00	11/13/07 04:10	629-99-2	
<b>Gasoline Range Organics</b>		Analytical Method: EPA 8015 Modified    Preparation Method: EPA 5035A/5030B						
Gasoline Range Organics	ND	mg/kg	5.6	1	11/09/07 10:34	11/09/07 22:36	8006-61-9	
4-Bromofluorobenzene (S)	95	%	50-135	1	11/09/07 10:34	11/09/07 22:36	460-00-4	
<b>Percent Moisture</b>		Analytical Method: ASTM D2974-87						
Percent Moisture	<b>12.4</b>	%	0.10	1		11/09/07 13:54		

## ANALYTICAL RESULTS

Project: NCDOT 00907/WSB#32782.1.1

Pace Project No.: 927329

**Sample: SS-4-5**      **Lab ID: 927329008**      Collected: 11/06/07 15:00      Received: 11/07/07 15:55      Matrix: Solid

**Results reported on a "dry-weight" basis**

Parameters	Results	Units	Report Limit	DF	Prepared	Analyzed	CAS No.	Qual
<b>8015 GCS THC-Diesel for ASE</b>		Analytical Method: EPA 8015 Modified    Preparation Method: EPA 3545						
Diesel Components	<b>41.8</b>	mg/kg	5.6	1	11/12/07 00:00	11/13/07 19:13	68334-30-5	
n-Pentacosane (S)	108	%	50-135	1	11/12/07 00:00	11/13/07 19:13	629-99-2	
<b>Gasoline Range Organics</b>		Analytical Method: EPA 8015 Modified    Preparation Method: EPA 5035A/5030B						
Gasoline Range Organics	ND	mg/kg	5.5	1	11/09/07 10:34	11/09/07 22:57	8006-61-9	
4-Bromofluorobenzene (S)	106	%	50-135	1	11/09/07 10:34	11/09/07 22:57	460-00-4	
<b>Percent Moisture</b>		Analytical Method: ASTM D2974-87						
Percent Moisture	<b>10.2</b>	%	0.10	1		11/09/07 13:55		

## ANALYTICAL RESULTS

Project: NCDOT 00907/WSB#32782.1.1

Pace Project No.: 927329

**Sample: SS-5-7**      **Lab ID: 927329009**      Collected: 11/06/07 15:20      Received: 11/07/07 15:55      Matrix: Solid

**Results reported on a "dry-weight" basis**

Parameters	Results	Units	Report Limit	DF	Prepared	Analyzed	CAS No.	Qual
<b>8015 GCS THC-Diesel for ASE</b>		Analytical Method: EPA 8015 Modified    Preparation Method: EPA 3545						
Diesel Components	<b>69.4</b>	mg/kg	5.6	1	11/12/07 00:00	11/13/07 19:38	68334-30-5	
n-Pentacosane (S)	114	%	50-135	1	11/12/07 00:00	11/13/07 19:38	629-99-2	
<b>Gasoline Range Organics</b>		Analytical Method: EPA 8015 Modified    Preparation Method: EPA 5035A/5030B						
Gasoline Range Organics	<b>70.1</b>	mg/kg	6.1	1	11/09/07 10:34	11/09/07 23:17	8006-61-9	
4-Bromofluorobenzene (S)	111	%	50-135	1	11/09/07 10:34	11/09/07 23:17	460-00-4	
<b>Percent Moisture</b>		Analytical Method: ASTM D2974-87						
Percent Moisture	<b>10.2</b>	%	0.10	1		11/09/07 13:55		



### ANALYTICAL RESULTS

Project: NCDOT 00907/WSB#32782.1.1

Pace Project No.: 927329

**Sample: SS-6-7**      **Lab ID: 927329010**      Collected: 11/06/07 15:40      Received: 11/07/07 15:55      Matrix: Solid

**Results reported on a "dry-weight" basis**

Parameters	Results	Units	Report Limit	DF	Prepared	Analyzed	CAS No.	Qual
<b>8015 GCS THC-Diesel for ASE</b>		Analytical Method: EPA 8015 Modified    Preparation Method: EPA 3545						
Diesel Components	<b>114</b> mg/kg		5.8	1	11/12/07 00:00	11/13/07 19:38	68334-30-5	
n-Pentacosane (S)	141 %		50-135	1	11/12/07 00:00	11/13/07 19:38	629-99-2	S5
<b>Gasoline Range Organics</b>		Analytical Method: EPA 8015 Modified    Preparation Method: EPA 5035A/5030B						
Gasoline Range Organics	ND mg/kg		6.8	1	11/09/07 10:34	11/09/07 23:38	8006-61-9	
4-Bromofluorobenzene (S)	91 %		50-135	1	11/09/07 10:34	11/09/07 23:38	460-00-4	
<b>Percent Moisture</b>		Analytical Method: ASTM D2974-87						
Percent Moisture	<b>14.2</b> %		0.10	1		11/09/07 13:55		

### ANALYTICAL RESULTS

Project: NCDOT 00907/WSB#32782.1.1

Pace Project No.: 927329

**Sample: SS-7-7**      **Lab ID: 927329011**      Collected: 11/06/07 15:55      Received: 11/07/07 15:55      Matrix: Solid

**Results reported on a "dry-weight" basis**

Parameters	Results	Units	Report Limit	DF	Prepared	Analyzed	CAS No.	Qual
<b>8015 GCS THC-Diesel for ASE</b>		Analytical Method: EPA 8015 Modified    Preparation Method: EPA 3545						
Diesel Components	ND	mg/kg	5.9	1	11/12/07 00:00	11/13/07 20:04	68334-30-5	
n-Pentacosane (S)	71	%	50-135	1	11/12/07 00:00	11/13/07 20:04	629-99-2	
<b>Gasoline Range Organics</b>		Analytical Method: EPA 8015 Modified    Preparation Method: EPA 5035A/5030B						
Gasoline Range Organics	ND	mg/kg	5.1	1	11/09/07 10:34	11/09/07 23:58	8006-61-9	
4-Bromofluorobenzene (S)	94	%	50-135	1	11/09/07 10:34	11/09/07 23:58	460-00-4	
<b>Percent Moisture</b>		Analytical Method: ASTM D2974-87						
Percent Moisture	<b>15.6</b>	%	0.10	1		11/09/07 13:55		

## ANALYTICAL RESULTS

Project: NCDOT 00907/WSB#32782.1.1

Pace Project No.: 927329

**Sample: SS-12-8**      **Lab ID: 927329012**      Collected: 11/06/07 16:20      Received: 11/09/07 16:00      Matrix: Solid

**Results reported on a "dry-weight" basis**

Parameters	Results	Units	Report Limit	DF	Prepared	Analyzed	CAS No.	Qual
<b>8015 GCS THC-Diesel for ASE</b>		Analytical Method: EPA 8015 Modified    Preparation Method: EPA 3545						
Diesel Components	ND	mg/kg	5.7	1	11/12/07 00:00	11/13/07 20:04	68334-30-5	
n-Pentacosane (S)	71	%	50-135	1	11/12/07 00:00	11/13/07 20:04	629-99-2	
<b>Gasoline Range Organics</b>		Analytical Method: EPA 8015 Modified    Preparation Method: EPA 5035A/5030B						
Gasoline Range Organics	ND	mg/kg	5.3	1	11/13/07 16:45	11/13/07 21:18	8006-61-9	
4-Bromofluorobenzene (S)	99	%	50-135	1	11/13/07 16:45	11/13/07 21:18	460-00-4	
<b>Percent Moisture</b>		Analytical Method: ASTM D2974-87						
Percent Moisture	<b>12.0</b>	%	0.10	1		11/14/07 09:05		

## ANALYTICAL RESULTS

Project: NCDOT 00907/WSB#32782.1.1

Pace Project No.: 927329

**Sample: SS-9-3**      **Lab ID: 927329013**      Collected: 11/06/07 16:30      Received: 11/09/07 16:00      Matrix: Solid

**Results reported on a "dry-weight" basis**

Parameters	Results	Units	Report Limit	DF	Prepared	Analyzed	CAS No.	Qual
<b>8015 GCS THC-Diesel for ASE</b>		Analytical Method: EPA 8015 Modified    Preparation Method: EPA 3545						
Diesel Components	<b>18.0</b>	mg/kg	5.9	1	11/12/07 00:00	11/13/07 20:30	68334-30-5	
n-Pentacosane (S)	82	%	50-135	1	11/12/07 00:00	11/13/07 20:30	629-99-2	
<b>Gasoline Range Organics</b>		Analytical Method: EPA 8015 Modified    Preparation Method: EPA 5035A/5030B						
Gasoline Range Organics	ND	mg/kg	7.6	1	11/13/07 16:45	11/13/07 21:39	8006-61-9	
4-Bromofluorobenzene (S)	99	%	50-135	1	11/13/07 16:45	11/13/07 21:39	460-00-4	
<b>Percent Moisture</b>		Analytical Method: ASTM D2974-87						
Percent Moisture	<b>14.9</b>	%	0.10	1		11/14/07 09:05		

## ANALYTICAL RESULTS

Project: NCDOT 00907/WSB#32782.1.1

Pace Project No.: 927329

**Sample: SS8-7**      **Lab ID: 927329014**      Collected: 11/06/07 16:50      Received: 11/09/07 16:00      Matrix: Solid

**Results reported on a "dry-weight" basis**

Parameters	Results	Units	Report Limit	DF	Prepared	Analyzed	CAS No.	Qual
<b>8015 GCS THC-Diesel for ASE</b>		Analytical Method: EPA 8015 Modified    Preparation Method: EPA 3545						
Diesel Components	ND	mg/kg	5.6	1	11/12/07 00:00	11/13/07 20:30	68334-30-5	
n-Pentacosane (S)	70	%	50-135	1	11/12/07 00:00	11/13/07 20:30	629-99-2	
<b>Gasoline Range Organics</b>		Analytical Method: EPA 8015 Modified    Preparation Method: EPA 5035A/5030B						
Gasoline Range Organics	ND	mg/kg	6.8	1	11/13/07 16:45	11/13/07 21:59	8006-61-9	
4-Bromofluorobenzene (S)	95	%	50-135	1	11/13/07 16:45	11/13/07 21:59	460-00-4	
<b>Percent Moisture</b>		Analytical Method: ASTM D2974-87						
Percent Moisture	<b>10.7</b>	%	0.10	1		11/14/07 09:06		

## ANALYTICAL RESULTS

Project: NCDOT 00907/WSB#32782.1.1

Pace Project No.: 927329

**Sample: SS-16-7**      **Lab ID: 927329015**      Collected: 11/07/07 09:35      Received: 11/09/07 16:00      Matrix: Solid

**Results reported on a "dry-weight" basis**

Parameters	Results	Units	Report Limit	DF	Prepared	Analyzed	CAS No.	Qual
<b>8015 GCS THC-Diesel for ASE</b>		Analytical Method: EPA 8015 Modified    Preparation Method: EPA 3545						
Diesel Components	<b>26.3</b>	mg/kg	5.4	1	11/12/07 00:00	11/13/07 20:55	68334-30-5	
n-Pentacosane (S)	73	%	50-135	1	11/12/07 00:00	11/13/07 20:55	629-99-2	
<b>Gasoline Range Organics</b>		Analytical Method: EPA 8015 Modified    Preparation Method: EPA 5035A/5030B						
Gasoline Range Organics	<b>65.0</b>	mg/kg	5.8	1	11/13/07 16:45	11/13/07 22:20	8006-61-9	
4-Bromofluorobenzene (S)	113	%	50-135	1	11/13/07 16:45	11/13/07 22:20	460-00-4	
<b>Percent Moisture</b>		Analytical Method: ASTM D2974-87						
Percent Moisture	<b>7.6</b>	%	0.10	1		11/14/07 09:16		

### ANALYTICAL RESULTS

Project: NCDOT 00907/WSB#32782.1.1

Pace Project No.: 927329

**Sample: SS-13-5**      **Lab ID: 927329016**      Collected: 11/07/07 11:00      Received: 11/09/07 16:00      Matrix: Solid

**Results reported on a "dry-weight" basis**

Parameters	Results	Units	Report Limit	DF	Prepared	Analyzed	CAS No.	Qual
<b>8015 GCS THC-Diesel for ASE</b>		Analytical Method: EPA 8015 Modified    Preparation Method: EPA 3545						
Diesel Components	9.6	mg/kg	5.8	1	11/12/07 00:00	11/13/07 21:21	68334-30-5	
n-Pentacosane (S)	67	%	50-135	1	11/12/07 00:00	11/13/07 21:21	629-99-2	
<b>Gasoline Range Organics</b>		Analytical Method: EPA 8015 Modified    Preparation Method: EPA 5035A/5030B						
Gasoline Range Organics	ND	mg/kg	5.4	1	11/13/07 16:45	11/13/07 22:40	8006-61-9	
4-Bromofluorobenzene (S)	94	%	50-135	1	11/13/07 16:45	11/13/07 22:40	460-00-4	
<b>Percent Moisture</b>		Analytical Method: ASTM D2974-87						
Percent Moisture	13.2	%	0.10	1		11/14/07 09:17		

## ANALYTICAL RESULTS

Project: NCDOT 00907/WSB#32782.1.1

Pace Project No.: 927329

**Sample: SS-14-5**      **Lab ID: 927329017**      Collected: 11/07/07 11:15      Received: 11/09/07 16:00      Matrix: Solid

**Results reported on a "dry-weight" basis**

Parameters	Results	Units	Report Limit	DF	Prepared	Analyzed	CAS No.	Qual
<b>8015 GCS THC-Diesel for ASE</b>		Analytical Method: EPA 8015 Modified    Preparation Method: EPA 3545						
Diesel Components	ND	mg/kg	5.8	1	11/12/07 00:00	11/13/07 21:46	68334-30-5	
n-Pentacosane (S)	77	%	50-135	1	11/12/07 00:00	11/13/07 21:46	629-99-2	
<b>Gasoline Range Organics</b>		Analytical Method: EPA 8015 Modified    Preparation Method: EPA 5035A/5030B						
Gasoline Range Organics	ND	mg/kg	5.1	1	11/13/07 16:45	11/13/07 23:00	8006-61-9	
4-Bromofluorobenzene (S)	91	%	50-135	1	11/13/07 16:45	11/13/07 23:00	460-00-4	
<b>Percent Moisture</b>		Analytical Method: ASTM D2974-87						
Percent Moisture	<b>14.4</b>	%	0.10	1		11/14/07 09:17		



## ANALYTICAL RESULTS

Project: NCDOT 00907/WSB#32782.1.1

Pace Project No.: 927329

**Sample: SS-15-5**      **Lab ID: 927329018**      Collected: 11/07/07 11:45      Received: 11/09/07 16:00      Matrix: Solid

**Results reported on a "dry-weight" basis**

Parameters	Results	Units	Report Limit	DF	Prepared	Analyzed	CAS No.	Qual
<b>8015 GCS THC-Diesel for ASE</b>		Analytical Method: EPA 8015 Modified    Preparation Method: EPA 3545						
Diesel Components	ND	mg/kg	5.8	1	11/12/07 00:00	11/13/07 22:11	68334-30-5	
n-Pentacosane (S)	68	%	50-135	1	11/12/07 00:00	11/13/07 22:11	629-99-2	
<b>Gasoline Range Organics</b>		Analytical Method: EPA 8015 Modified    Preparation Method: EPA 5035A/5030B						
Gasoline Range Organics	ND	mg/kg	5.3	1	11/13/07 16:45	11/14/07 00:02	8006-61-9	
4-Bromofluorobenzene (S)	91	%	50-135	1	11/13/07 16:45	11/14/07 00:02	460-00-4	
<b>Percent Moisture</b>		Analytical Method: ASTM D2974-87						
Percent Moisture	<b>13.5</b>	%	0.10	1		11/14/07 09:17		

## ANALYTICAL RESULTS

Project: NCDOT 00907/WSB#32782.1.1

Pace Project No.: 927329

**Sample: SS-16-5**      **Lab ID: 927329019**      Collected: 11/07/07 13:40      Received: 11/09/07 16:00      Matrix: Solid

**Results reported on a "dry-weight" basis**

Parameters	Results	Units	Report Limit	DF	Prepared	Analyzed	CAS No.	Qual
<b>8015 GCS THC-Diesel for ASE</b>		Analytical Method: EPA 8015 Modified    Preparation Method: EPA 3545						
Diesel Components	ND	mg/kg	6.1	1	11/12/07 00:00	11/13/07 22:37	68334-30-5	
n-Pentacosane (S)	62	%	50-135	1	11/12/07 00:00	11/13/07 22:37	629-99-2	
<b>Gasoline Range Organics</b>		Analytical Method: EPA 8015 Modified    Preparation Method: EPA 5035A/5030B						
Gasoline Range Organics	ND	mg/kg	6.0	1	11/13/07 16:45	11/14/07 00:22	8006-61-9	
4-Bromofluorobenzene (S)	97	%	50-135	1	11/13/07 16:45	11/14/07 00:22	460-00-4	
<b>Percent Moisture</b>		Analytical Method: ASTM D2974-87						
Percent Moisture	<b>17.5</b>	%	0.10	1		11/14/07 09:17		

## ANALYTICAL RESULTS

Project: NCDOT 00907/WSB#32782.1.1

Pace Project No.: 927329

**Sample: SS-17-5**      **Lab ID: 927329020**      Collected: 11/07/07 14:00      Received: 11/09/07 16:00      Matrix: Solid

**Results reported on a "dry-weight" basis**

Parameters	Results	Units	Report Limit	DF	Prepared	Analyzed	CAS No.	Qual
<b>8015 GCS THC-Diesel for ASE</b>		Analytical Method: EPA 8015 Modified    Preparation Method: EPA 3545						
Diesel Components	ND	mg/kg	5.4	1	11/13/07 00:00	11/14/07 17:14	68334-30-5	
n-Pentacosane (S)	67	%	50-135	1	11/13/07 00:00	11/14/07 17:14	629-99-2	
<b>Gasoline Range Organics</b>		Analytical Method: EPA 8015 Modified    Preparation Method: EPA 5035A/5030B						
Gasoline Range Organics	ND	mg/kg	6.0	1	11/13/07 16:45	11/14/07 00:43	8006-61-9	
4-Bromofluorobenzene (S)	94	%	50-135	1	11/13/07 16:45	11/14/07 00:43	460-00-4	
<b>Percent Moisture</b>		Analytical Method: ASTM D2974-87						
Percent Moisture	<b>6.8</b>	%	0.10	1		11/14/07 09:18		

## ANALYTICAL RESULTS

Project: NCDOT 00907/WSB#32782.1.1

Pace Project No.: 927329

**Sample: SS-18-5**      **Lab ID: 927329021**      Collected: 11/07/07 14:10      Received: 11/09/07 16:00      Matrix: Solid

**Results reported on a "dry-weight" basis**

Parameters	Results	Units	Report Limit	DF	Prepared	Analyzed	CAS No.	Qual
<b>8015 GCS THC-Diesel for ASE</b>		Analytical Method: EPA 8015 Modified    Preparation Method: EPA 3545						
Diesel Components	ND	mg/kg	6.3	1	11/15/07 00:00	11/19/07 03:48	68334-30-5	
n-Pentacosane (S)	57	%	50-135	1	11/15/07 00:00	11/19/07 03:48	629-99-2	
<b>Gasoline Range Organics</b>		Analytical Method: EPA 8015 Modified    Preparation Method: EPA 5035A/5030B						
Gasoline Range Organics	ND	mg/kg	6.7	1	11/13/07 16:45	11/14/07 01:03	8006-61-9	
4-Bromofluorobenzene (S)	98	%	50-135	1	11/13/07 16:45	11/14/07 01:03	460-00-4	
<b>Percent Moisture</b>		Analytical Method: ASTM D2974-87						
Percent Moisture	<b>20.2</b>	%	0.10	1		11/14/07 09:18		

## ANALYTICAL RESULTS

Project: NCDOT 00907/WSB#32782.1.1

Pace Project No.: 927329

**Sample: SS-19-5**      **Lab ID: 927329022**      Collected: 11/07/07 15:15      Received: 11/09/07 16:00      Matrix: Solid

**Results reported on a "dry-weight" basis**

Parameters	Results	Units	Report Limit	DF	Prepared	Analyzed	CAS No.	Qual
<b>8015 GCS THC-Diesel for ASE</b>		Analytical Method: EPA 8015 Modified    Preparation Method: EPA 3545						
Diesel Components	ND	mg/kg	33.4	1	11/15/07 00:00	11/19/07 04:14	68334-30-5	
n-Pentacosane (S)	65	%	50-135	1	11/15/07 00:00	11/19/07 04:14	629-99-2	
<b>Gasoline Range Organics</b>		Analytical Method: EPA 8015 Modified    Preparation Method: EPA 5035A/5030B						
Gasoline Range Organics	ND	mg/kg	6.1	1	11/13/07 16:45	11/14/07 01:24	8006-61-9	
4-Bromofluorobenzene (S)	95	%	50-135	1	11/13/07 16:45	11/14/07 01:24	460-00-4	
<b>Percent Moisture</b>		Analytical Method: ASTM D2974-87						
Percent Moisture	<b>10.1</b>	%	0.10	1		11/14/07 09:18		

## ANALYTICAL RESULTS

Project: NCDOT 00907/WSB#32782.1.1

Pace Project No.: 927329

**Sample: SS-20-7**      **Lab ID: 927329023**      Collected: 11/08/07 11:40      Received: 11/09/07 16:00      Matrix: Solid

**Results reported on a "dry-weight" basis**

Parameters	Results	Units	Report Limit	DF	Prepared	Analyzed	CAS No.	Qual
<b>8015 GCS THC-Diesel for ASE</b>		Analytical Method: EPA 8015 Modified    Preparation Method: EPA 3545						
Diesel Components	ND	mg/kg	5.1	1	11/13/07 00:00	11/14/07 17:39	68334-30-5	
n-Pentacosane (S)	78	%	50-135	1	11/13/07 00:00	11/14/07 17:39	629-99-2	
<b>Gasoline Range Organics</b>		Analytical Method: EPA 8015 Modified    Preparation Method: EPA 5035A/5030B						
Gasoline Range Organics	ND	mg/kg	6.7	1	11/13/07 16:45	11/14/07 01:44	8006-61-9	
4-Bromofluorobenzene (S)	97	%	50-135	1	11/13/07 16:45	11/14/07 01:44	460-00-4	
<b>Percent Moisture</b>		Analytical Method: ASTM D2974-87						
Percent Moisture	1.6	%	0.10	1		11/14/07 09:19		

### ANALYTICAL RESULTS

Project: NCDOT 00907/WSB#32782.1.1

Pace Project No.: 927329

**Sample: SS-21-7**      **Lab ID: 927329024**      Collected: 11/08/07 11:55      Received: 11/09/07 16:00      Matrix: Solid

**Results reported on a "dry-weight" basis**

Parameters	Results	Units	Report Limit	DF	Prepared	Analyzed	CAS No.	Qual
<b>8015 GCS THC-Diesel for ASE</b>		Analytical Method: EPA 8015 Modified    Preparation Method: EPA 3545						
Diesel Components	ND	mg/kg	5.7	1	11/13/07 00:00	11/14/07 18:05	68334-30-5	
n-Pentacosane (S)	72	%	50-135	1	11/13/07 00:00	11/14/07 18:05	629-99-2	
<b>Gasoline Range Organics</b>		Analytical Method: EPA 8015 Modified    Preparation Method: EPA 5035A/5030B						
Gasoline Range Organics	ND	mg/kg	6.9	1	11/13/07 16:45	11/14/07 02:05	8006-61-9	
4-Bromofluorobenzene (S)	96	%	50-135	1	11/13/07 16:45	11/14/07 02:05	460-00-4	
<b>Percent Moisture</b>		Analytical Method: ASTM D2974-87						
Percent Moisture	<b>12.7</b>	%	0.10	1		11/14/07 09:19		

## ANALYTICAL RESULTS

Project: NCDOT 00907/WSB#32782.1.1

Pace Project No.: 927329

**Sample: SS-22-5**      **Lab ID: 927329025**      Collected: 11/08/07 13:16      Received: 11/09/07 16:00      Matrix: Solid

**Results reported on a "dry-weight" basis**

Parameters	Results	Units	Report Limit	DF	Prepared	Analyzed	CAS No.	Qual
<b>8015 GCS THC-Diesel for ASE</b>		Analytical Method: EPA 8015 Modified    Preparation Method: EPA 3545						
Diesel Components	ND	mg/kg	5.9	1	11/13/07 00:00	11/14/07 18:05	68334-30-5	
n-Pentacosane (S)	75	%	50-135	1	11/13/07 00:00	11/14/07 18:05	629-99-2	
<b>Gasoline Range Organics</b>		Analytical Method: EPA 8015 Modified    Preparation Method: EPA 5035A/5030B						
Gasoline Range Organics	ND	mg/kg	5.5	1	11/13/07 16:45	11/14/07 02:26	8006-61-9	
4-Bromofluorobenzene (S)	100	%	50-135	1	11/13/07 16:45	11/14/07 02:26	460-00-4	
<b>Percent Moisture</b>		Analytical Method: ASTM D2974-87						
Percent Moisture	<b>15.4</b>	%	0.10	1		11/14/07 09:19		



## ANALYTICAL RESULTS

Project: NCDOT 00907/WSB#32782.1.1

Pace Project No.: 927329

**Sample: SS-23-7**      **Lab ID: 927329026**      Collected: 11/08/07 13:30      Received: 11/09/07 16:00      Matrix: Solid

**Results reported on a "dry-weight" basis**

Parameters	Results	Units	Report Limit	DF	Prepared	Analyzed	CAS No.	Qual
<b>8015 GCS THC-Diesel for ASE</b>		Analytical Method: EPA 8015 Modified    Preparation Method: EPA 3545						
Diesel Components	ND	mg/kg	5.3	1	11/13/07 00:00	11/14/07 18:30	68334-30-5	
n-Pentacosane (S)	74	%	50-135	1	11/13/07 00:00	11/14/07 18:30	629-99-2	
<b>Gasoline Range Organics</b>		Analytical Method: EPA 8015 Modified    Preparation Method: EPA 5035A/5030B						
Gasoline Range Organics	ND	mg/kg	6.4	1	11/13/07 16:45	11/14/07 02:46	8006-61-9	
4-Bromofluorobenzene (S)	99	%	50-135	1	11/13/07 16:45	11/14/07 02:46	460-00-4	
<b>Percent Moisture</b>		Analytical Method: ASTM D2974-87						
Percent Moisture	<b>4.8</b>	%	0.10	1		11/14/07 09:19		

## ANALYTICAL RESULTS

Project: NCDOT 00907/WSB#32782.1.1

Pace Project No.: 927329

**Sample: SS-24-3**      **Lab ID: 927329027**      Collected: 11/08/07 14:05      Received: 11/09/07 16:00      Matrix: Solid

**Results reported on a "dry-weight" basis**

Parameters	Results	Units	Report Limit	DF	Prepared	Analyzed	CAS No.	Qual
<b>8015 GCS THC-Diesel for ASE</b>		Analytical Method: EPA 8015 Modified    Preparation Method: EPA 3545						
Diesel Components	ND	mg/kg	5.9	1	11/13/07 00:00	11/14/07 18:30	68334-30-5	
n-Pentacosane (S)	63	%	50-135	1	11/13/07 00:00	11/14/07 18:30	629-99-2	
<b>Gasoline Range Organics</b>		Analytical Method: EPA 8015 Modified    Preparation Method: EPA 5035A/5030B						
Gasoline Range Organics	ND	mg/kg	6.0	1	11/13/07 16:45	11/14/07 03:07	8006-61-9	
4-Bromofluorobenzene (S)	93	%	50-135	1	11/13/07 16:45	11/14/07 03:07	460-00-4	
<b>Percent Moisture</b>		Analytical Method: ASTM D2974-87						
Percent Moisture	<b>14.9</b>	%	0.10	1		11/14/07 09:19		

### ANALYTICAL RESULTS

Project: NCDOT 00907/WSB#32782.1.1

Pace Project No.: 927329

**Sample: SS-25-3**      **Lab ID: 927329028**      Collected: 11/08/07 14:50      Received: 11/09/07 16:00      Matrix: Solid

**Results reported on a "dry-weight" basis**

Parameters	Results	Units	Report Limit	DF	Prepared	Analyzed	CAS No.	Qual
<b>8015 GCS THC-Diesel for ASE</b>		Analytical Method: EPA 8015 Modified    Preparation Method: EPA 3545						
Diesel Components	ND	mg/kg	5.8	1	11/15/07 00:00	11/19/07 04:14	68334-30-5	
n-Pentacosane (S)	66	%	50-135	1	11/15/07 00:00	11/19/07 04:14	629-99-2	
<b>Gasoline Range Organics</b>		Analytical Method: EPA 8015 Modified    Preparation Method: EPA 5035A/5030B						
Gasoline Range Organics	ND	mg/kg	6.3	1	11/16/07 17:01	11/17/07 04:02	8006-61-9	
4-Bromofluorobenzene (S)	78	%	50-135	1	11/16/07 17:01	11/17/07 04:02	460-00-4	
<b>Percent Moisture</b>		Analytical Method: ASTM D2974-87						
Percent Moisture	<b>14.3</b>	%	0.10	1		11/14/07 09:19		

## ANALYTICAL RESULTS

Project: NCDOT 00907/WSB#32782.1.1

Pace Project No.: 927329

Sample: <b>SS-16-GW</b>	Lab ID: <b>927329029</b>	Collected: 11/07/07 09:40	Received: 11/09/07 16:00	Matrix: Water				
Parameters	Results	Units	Report Limit	DF	Prepared	Analyzed	CAS No.	Qual
<b>8015 GCS THC-Diesel</b>		Analytical Method: EPA 8015 Modified Preparation Method: EPA 3510						
Diesel Components	<b>0.30</b> mg/L		0.14	1	11/14/07 00:00	11/15/07 17:42	68334-30-5	
n-Pentacosane (S)	71 %		50-135	1	11/14/07 00:00	11/15/07 17:42	629-99-2	
<b>Gasoline Range Organics</b>		Analytical Method: EPA 5030/8015 Mod.						
Gasoline Range Organics	ND mg/L		0.080	1		11/16/07 20:53	8006-61-9	
4-Bromofluorobenzene (S)	80 %		50-150	1		11/16/07 20:53	460-00-4	

## ANALYTICAL RESULTS

Project: NCDOT 00907/WSB#32782.1.1

Pace Project No.: 927329

Sample: <b>SS-15-GW</b>	Lab ID: <b>927329030</b>	Collected: 11/07/07 11:55	Received: 11/09/07 16:00	Matrix: Water				
Parameters	Results	Units	Report Limit	DF	Prepared	Analyzed	CAS No.	Qual
<b>8015 GCS THC-Diesel</b>		Analytical Method: EPA 8015 Modified Preparation Method: EPA 3510						
Diesel Components	ND mg/L		0.14	1	11/14/07 00:00	11/15/07 18:07	68334-30-5	
n-Pentacosane (S)	77 %		50-135	1	11/14/07 00:00	11/15/07 18:07	629-99-2	
<b>Gasoline Range Organics</b>		Analytical Method: EPA 5030/8015 Mod.						
Gasoline Range Organics	ND mg/L		0.080	1		11/14/07 19:13	8006-61-9	
4-Bromofluorobenzene (S)	86 %		50-150	1		11/14/07 19:13	460-00-4	

## ANALYTICAL RESULTS

Project: NCDOT 00907/WSB#32782.1.1

Pace Project No.: 927329

Sample: <b>SS-18-GW</b>	Lab ID: <b>927329031</b>	Collected: 11/07/07 14:15	Received: 11/09/07 16:00	Matrix: Water				
Parameters	Results	Units	Report Limit	DF	Prepared	Analyzed	CAS No.	Qual
<b>8015 GCS THC-Diesel</b>		Analytical Method: EPA 8015 Modified Preparation Method: EPA 3510						
Diesel Components	ND mg/L		0.11	1	11/14/07 00:00	11/15/07 18:07	68334-30-5	
n-Pentacosane (S)	71 %		50-135	1	11/14/07 00:00	11/15/07 18:07	629-99-2	
<b>Gasoline Range Organics</b>		Analytical Method: EPA 5030/8015 Mod.						
Gasoline Range Organics	ND mg/L		0.080	1		11/14/07 19:33	8006-61-9	
4-Bromofluorobenzene (S)	78 %		50-150	1		11/14/07 19:33	460-00-4	

## ANALYTICAL RESULTS

Project: NCDOT 00907/WSB#32782.1.1

Pace Project No.: 927329

Parameters	Results	Units	Report Limit	DF	Prepared	Analyzed	CAS No.	Qual
<b>Sample: SS-23-GW      Lab ID: 927329032      Collected: 11/08/07 13:35      Received: 11/09/07 16:00      Matrix: Water</b>								
<b>8015 GCS THC-Diesel</b> Analytical Method: EPA 8015 Modified      Preparation Method: EPA 3510								
Diesel Components	ND	mg/L	0.12	1	11/14/07 00:00	11/15/07 18:33	68334-30-5	
n-Pentacosane (S)	78	%	50-135	1	11/14/07 00:00	11/15/07 18:33	629-99-2	
<b>Gasoline Range Organics</b> Analytical Method: EPA 5030/8015 Mod.								
Gasoline Range Organics	ND	mg/L	0.080	1		11/14/07 19:54	8006-61-9	
4-Bromofluorobenzene (S)	90	%	50-150	1		11/14/07 19:54	460-00-4	

## ANALYTICAL RESULTS

Project: NCDOT 00907/WSB#32782.1.1

Pace Project No.: 927329

**Sample: SS-26-3**      **Lab ID: 927329033**      Collected: 11/08/07 15:10      Received: 11/09/07 16:00      Matrix: Solid

**Results reported on a "dry-weight" basis**

Parameters	Results	Units	Report Limit	DF	Prepared	Analyzed	CAS No.	Qual
<b>8015 GCS THC-Diesel for ASE</b>		Analytical Method: EPA 8015 Modified    Preparation Method: EPA 3545						
Diesel Components	<b>19.1</b>	mg/kg	5.3	1	11/15/07 00:00	11/19/07 04:39	68334-30-5	
n-Pentacosane (S)	70	%	50-135	1	11/15/07 00:00	11/19/07 04:39	629-99-2	
<b>Gasoline Range Organics</b>		Analytical Method: EPA 8015 Modified    Preparation Method: EPA 5035A/5030B						
Gasoline Range Organics	ND	mg/kg	5.4	1	11/16/07 17:01	11/17/07 04:55	8006-61-9	
4-Bromofluorobenzene (S)	73	%	50-135	1	11/16/07 17:01	11/17/07 04:55	460-00-4	
<b>Percent Moisture</b>		Analytical Method: ASTM D2974-87						
Percent Moisture	<b>5.5</b>	%	0.10	1		11/14/07 09:20		



## ANALYTICAL RESULTS

Project: NCDOT 00907/WSB#32782.1.1

Pace Project No.: 927329

Sample: <b>SS-26-GWMW</b>		Lab ID: <b>927329034</b>	Collected: 11/08/07 15:15	Received: 11/09/07 16:00	Matrix: Water			
Parameters	Results	Units	Report Limit	DF	Prepared	Analyzed	CAS No.	Qual
<b>8015 GCS THC-Diesel</b>		Analytical Method: EPA 8015 Modified Preparation Method: EPA 3510						
Diesel Components	<b>0.12</b> mg/L		0.11	1	11/16/07 00:00	11/20/07 22:12	68334-30-5	
n-Pentacosane (S)	79 %		50-135	1	11/16/07 00:00	11/20/07 22:12	629-99-2	
<b>Gasoline Range Organics</b>		Analytical Method: EPA 5030/8015 Mod.						
Gasoline Range Organics	ND mg/L		0.080	1		11/20/07 16:49	8006-61-9	
4-Bromofluorobenzene (S)	78 %		50-150	1		11/20/07 16:49	460-00-4	

### QUALITY CONTROL DATA

Project: NCDOT 00907/WSB#32782.1.1

Pace Project No.: 927329

QC Batch: PMST/1203 Analysis Method: ASTM D2974-87

QC Batch Method: ASTM D2974-87 Analysis Description: Dry Weight/Percent Moisture

Associated Lab Samples: 927329001, 927329002, 927329003, 927329004, 927329005, 927329006

SAMPLE DUPLICATE: 38089

Parameter	Units	927298001 Result	Dup Result	RPD	Qualifiers
Percent Moisture	%	15.2	13.1	15	

### QUALITY CONTROL DATA

Project: NCDOT 00907/WSB#32782.1.1

Pace Project No.: 927329

QC Batch: PMST/1208

Analysis Method: ASTM D2974-87

QC Batch Method: ASTM D2974-87

Analysis Description: Dry Weight/Percent Moisture

Associated Lab Samples: 927329007, 927329008, 927329009, 927329010, 927329011

SAMPLE DUPLICATE: 38744

Parameter	Units	927467001 Result	Dup Result	RPD	Qualifiers
Percent Moisture	%	16.7	12.6	28	R1

### QUALITY CONTROL DATA

Project: NCDOT 00907/WSB#32782.1.1

Pace Project No.: 927329

QC Batch: GCV/1342 Analysis Method: EPA 8015 Modified  
 QC Batch Method: EPA 5035A/5030B Analysis Description: Gasoline Range Organics  
 Associated Lab Samples: 927329001, 927329002, 927329003, 927329004, 927329005, 927329006, 927329007, 927329008, 927329009, 927329010, 927329011

METHOD BLANK: 38850

Associated Lab Samples: 927329001, 927329002, 927329003, 927329004, 927329005, 927329006, 927329007, 927329008, 927329009, 927329010, 927329011

Parameter	Units	Blank Result	Reporting Limit	Qualifiers
Gasoline Range Organics	mg/kg	ND	6.0	
4-Bromofluorobenzene (S)	%	101	50-135	

LABORATORY CONTROL SAMPLE: 38851

Parameter	Units	Spike Conc.	LCS Result	LCS % Rec	% Rec Limits	Qualifiers
Gasoline Range Organics	mg/kg	25	29.5	118	70-150	
4-Bromofluorobenzene (S)	%			104	50-135	

MATRIX SPIKE SAMPLE: 38852

Parameter	Units	927295001 Result	Spike Conc.	MS Result	MS % Rec	% Rec Limits	Qualifiers
Gasoline Range Organics	mg/kg	ND	32.1	38.2	111	70-148	
4-Bromofluorobenzene (S)	%				95	50-135	

SAMPLE DUPLICATE: 38853

Parameter	Units	927295002 Result	Dup Result	RPD	Qualifiers
Gasoline Range Organics	mg/kg	ND	ND	89	
4-Bromofluorobenzene (S)	%		104	3	

**QUALITY CONTROL DATA**

Project: NCDOT 00907/WSB#32782.1.1

Pace Project No.: 927329

QC Batch: OEXT/1697 Analysis Method: EPA 8015 Modified  
 QC Batch Method: EPA 3545 Analysis Description: 8015 Solid GCSV  
 Associated Lab Samples: 927329001, 927329002, 927329003, 927329004, 927329005, 927329006, 927329007

METHOD BLANK: 39631

Associated Lab Samples: 927329001, 927329002, 927329003, 927329004, 927329005, 927329006, 927329007

Parameter	Units	Blank Result	Reporting Limit	Qualifiers
Diesel Components	mg/kg	ND	5.0	
n-Pentacosane (S)	%	88	50-135	

LABORATORY CONTROL SAMPLE: 39632

Parameter	Units	Spike Conc.	LCS Result	LCS % Rec	% Rec Limits	Qualifiers
Diesel Components	mg/kg	167	100	60	50-114	
n-Pentacosane (S)	%			68	50-135	

MATRIX SPIKE & MATRIX SPIKE DUPLICATE: 40587 40588

Parameter	Units	927170003 Result	MS Spike Conc.	MSD Spike Conc.	MS Result	MSD Result	MS % Rec	MSD % Rec	% Rec Limits	RPD	Qual
Diesel Components	mg/kg	59.9	167	167	178	215	71	93	50-107	19	
n-Pentacosane (S)	%						97	103	50-135		

**QUALITY CONTROL DATA**

Project: NCDOT 00907/WSB#32782.1.1

Pace Project No.: 927329

QC Batch: OEXT/1707 Analysis Method: EPA 8015 Modified  
 QC Batch Method: EPA 3545 Analysis Description: 8015 Solid GCSV  
 Associated Lab Samples: 927329008, 927329009, 927329010, 927329011, 927329012, 927329013, 927329014, 927329015, 927329016, 927329017, 927329018, 927329019

METHOD BLANK: 39873

Associated Lab Samples: 927329008, 927329009, 927329010, 927329011, 927329012, 927329013, 927329014, 927329015, 927329016, 927329017, 927329018, 927329019

Parameter	Units	Blank Result	Reporting Limit	Qualifiers
Diesel Components	mg/kg	ND	5.0	
n-Pentacosane (S)	%	71	50-135	

LABORATORY CONTROL SAMPLE: 39874

Parameter	Units	Spike Conc.	LCS Result	LCS % Rec	% Rec Limits	Qualifiers
Diesel Components	mg/kg	167	115	69	50-114	
n-Pentacosane (S)	%			99	50-135	

MATRIX SPIKE & MATRIX SPIKE DUPLICATE: 39875 39876

Parameter	Units	927329015 Result	MS Spike Conc.	MSD Spike Conc.	MS Result	MSD Result	MS % Rec	MSD % Rec	% Rec Limits	RPD	Qual
Diesel Components	mg/kg	26.3	181	181	181	188	86	90	50-107	4	
n-Pentacosane (S)	%						101	95	50-135		

### QUALITY CONTROL DATA

Project: NCDOT 00907/WSB#32782.1.1

Pace Project No.: 927329

QC Batch:	OEXT/1720	Analysis Method:	EPA 8015 Modified
QC Batch Method:	EPA 3545	Analysis Description:	8015 Solid GCSV
Associated Lab Samples:	927329020, 927329023, 927329024, 927329025, 927329026, 927329027		

METHOD BLANK: 40371

Associated Lab Samples: 927329020, 927329023, 927329024, 927329025, 927329026, 927329027

Parameter	Units	Blank Result	Reporting Limit	Qualifiers
Diesel Components	mg/kg	ND	5.0	
n-Pentacosane (S)	%	74	50-135	

LABORATORY CONTROL SAMPLE: 40372

Parameter	Units	Spike Conc.	LCS Result	LCS % Rec	% Rec Limits	Qualifiers
Diesel Components	mg/kg	167	118	71	50-114	
n-Pentacosane (S)	%			80	50-135	

MATRIX SPIKE & MATRIX SPIKE DUPLICATE: 40373 40374

Parameter	Units	927631001		MSD		MS		MSD		% Rec Limits	RPD	Qual
		Result	Spike Conc.	Spike Conc.	MS Result	MSD Result	% Rec	% Rec				
Diesel Components	mg/kg	10800	190	190	10400	9080	-204	-916	50-107	14	1g	
n-Pentacosane (S)	%						4520	12000	50-135		S5	

**QUALITY CONTROL DATA**

Project: NCDOT 00907/WSB#32782.1.1

Pace Project No.: 927329

---

QC Batch: PMST/1219 Analysis Method: ASTM D2974-87

QC Batch Method: ASTM D2974-87 Analysis Description: Dry Weight/Percent Moisture

Associated Lab Samples: 927329012, 927329013, 927329014

---

SAMPLE DUPLICATE: 40497

Parameter	Units	927509001 Result	Dup Result	RPD	Qualifiers
Percent Moisture	%	42.0	43.2	3	





### QUALITY CONTROL DATA

Project: NCDOT 00907/WSB#32782.1.1

Pace Project No.: 927329

QC Batch: GCV/1363 Analysis Method: EPA 8015 Modified  
 QC Batch Method: EPA 5035A/5030B Analysis Description: Gasoline Range Organics  
 Associated Lab Samples: 927329012, 927329013, 927329014, 927329015, 927329016, 927329017, 927329018, 927329019, 927329020, 927329021, 927329022, 927329023, 927329024, 927329025, 927329026, 927329027

METHOD BLANK: 40536

Associated Lab Samples: 927329012, 927329013, 927329014, 927329015, 927329016, 927329017, 927329018, 927329019, 927329020, 927329021, 927329022, 927329023, 927329024, 927329025, 927329026, 927329027

Parameter	Units	Blank Result	Reporting Limit	Qualifiers
Gasoline Range Organics	mg/kg	ND	6.0	
4-Bromofluorobenzene (S)	%	98	50-135	

LABORATORY CONTROL SAMPLE: 40537

Parameter	Units	Spike Conc.	LCS Result	LCS % Rec	% Rec Limits	Qualifiers
Gasoline Range Organics	mg/kg	25	26.7	107	70-150	
4-Bromofluorobenzene (S)	%			100	50-135	

MATRIX SPIKE SAMPLE: 40538

Parameter	Units	927566001 Result	Spike Conc.	MS Result	MS % Rec	% Rec Limits	Qualifiers
Gasoline Range Organics	mg/kg	ND	25.9	27.7	100	70-148	
4-Bromofluorobenzene (S)	%				103	50-135	

SAMPLE DUPLICATE: 40539

Parameter	Units	927566003 Result	Dup Result	RPD	Qualifiers
Gasoline Range Organics	mg/kg	ND	ND	113	
4-Bromofluorobenzene (S)	%		102	2	

### QUALITY CONTROL DATA

Project: NCDOT 00907/WSB#32782.1.1

Pace Project No.: 927329

QC Batch: GCV/1366

Analysis Method: EPA 5030/8015 Mod.

QC Batch Method: EPA 5030/8015 Mod.

Analysis Description: Gasoline Range Organics

Associated Lab Samples: 927329029, 927329030, 927329031, 927329032

METHOD BLANK: 40795

Associated Lab Samples: 927329029, 927329030, 927329031, 927329032

Parameter	Units	Blank Result	Reporting Limit	Qualifiers
Gasoline Range Organics	mg/L	ND	0.080	
4-Bromofluorobenzene (S)	%	104	50-150	

LABORATORY CONTROL SAMPLE: 40796

Parameter	Units	Spike Conc.	LCS Result	LCS % Rec	% Rec Limits	Qualifiers
Gasoline Range Organics	mg/L	.5	0.54	107	70-137	
4-Bromofluorobenzene (S)	%			99	50-150	

MATRIX SPIKE SAMPLE: 40797

Parameter	Units	927030001 Result	Spike Conc.	MS Result	MS % Rec	% Rec Limits	Qualifiers
Gasoline Range Organics	mg/L	ND	.5	0.47	90	53-150	
4-Bromofluorobenzene (S)	%				94	50-150	

SAMPLE DUPLICATE: 40798

Parameter	Units	927030002 Result	Dup Result	RPD	Qualifiers
Gasoline Range Organics	mg/L	3.2	3.2	1	
4-Bromofluorobenzene (S)	%	101	101	0	

**QUALITY CONTROL DATA**

Project: NCDOT 00907/WSB#32782.1.1

Pace Project No.: 927329

QC Batch: OEXT/1729 Analysis Method: EPA 8015 Modified

QC Batch Method: EPA 3510 Analysis Description: 8015 GCS

Associated Lab Samples: 927329029, 927329030, 927329031, 927329032

METHOD BLANK: 41069

Associated Lab Samples: 927329029, 927329030, 927329031, 927329032

Parameter	Units	Blank Result	Reporting Limit	Qualifiers
Diesel Components	mg/L	ND	0.10	
n-Pentacosane (S)	%	76	50-135	

LABORATORY CONTROL SAMPLE & LCSD: 41070

41071

Parameter	Units	Spike Conc.	LCS Result	LCSD Result	LCS % Rec	LCSD % Rec	% Rec Limits	RPD	Max RPD	Qualifiers
Diesel Components	mg/L	5	3.6	4.1	72	81	50-110	12	30	
n-Pentacosane (S)	%				84	85	50-135			

### QUALITY CONTROL DATA

Project: NCDOT 00907/WSB#32782.1.1

Pace Project No.: 927329

QC Batch: OEXT/1743 Analysis Method: EPA 8015 Modified

QC Batch Method: EPA 3545 Analysis Description: 8015 Solid GCSV

Associated Lab Samples: 927329021, 927329022, 927329028, 927329033

METHOD BLANK: 41892

Associated Lab Samples: 927329021, 927329022, 927329028, 927329033

Parameter	Units	Blank Result	Reporting Limit	Qualifiers
Diesel Components	mg/kg	ND	5.0	
n-Pentacosane (S)	%	73	50-135	

LABORATORY CONTROL SAMPLE: 41893

Parameter	Units	Spike Conc.	LCS Result	LCS % Rec	% Rec Limits	Qualifiers
Diesel Components	mg/kg	167	120	72	50-114	
n-Pentacosane (S)	%			85	50-135	

MATRIX SPIKE & MATRIX SPIKE DUPLICATE: 41894 41895

Parameter	Units	927895001 Result	MS Spike Conc.	MSD Spike Conc.	MS Result	MSD Result	MS % Rec	MSD % Rec	% Rec Limits	RPD	Qual
Diesel Components	mg/kg	837	185	185	858	706	12	-71	50-107	19	2g
n-Pentacosane (S)	%						78	71	50-135		

**QUALITY CONTROL DATA**

Project: NCDOT 00907/WSB#32782.1.1

Pace Project No.: 927329

QC Batch: OEXT/1762	Analysis Method: EPA 8015 Modified
QC Batch Method: EPA 3510	Analysis Description: 8015 GCS
Associated Lab Samples: 927329034	

METHOD BLANK: 42530

Associated Lab Samples: 927329034

Parameter	Units	Blank Result	Reporting Limit	Qualifiers
Diesel Components	mg/L	ND	0.10	
n-Pentacosane (S)	%	89	50-135	

LABORATORY CONTROL SAMPLE & LCSD: 42531

42532

Parameter	Units	Spike Conc.	LCS Result	LCSD Result	LCS % Rec	LCSD % Rec	% Rec Limits	RPD	Max RPD	Qualifiers
Diesel Components	mg/L	5	4.1	4.1	81	81	50-110	.2	30	
n-Pentacosane (S)	%				96	93	50-135			

### QUALITY CONTROL DATA

Project: NCDOT 00907/WSB#32782.1.1

Pace Project No.: 927329

QC Batch: GCV/1380

Analysis Method: EPA 8015 Modified

QC Batch Method: EPA 5035A/5030B

Analysis Description: Gasoline Range Organics

Associated Lab Samples: 927329028, 927329033

METHOD BLANK: 42698

Associated Lab Samples: 927329028, 927329033

Parameter	Units	Blank Result	Reporting Limit	Qualifiers
Gasoline Range Organics	mg/kg	ND	6.0	
4-Bromofluorobenzene (S)	%	64	50-135	

LABORATORY CONTROL SAMPLE: 42699

Parameter	Units	Spike Conc.	LCS Result	LCS % Rec	% Rec Limits	Qualifiers
Gasoline Range Organics	mg/kg	25	26.7	107	70-150	
4-Bromofluorobenzene (S)	%			82	50-135	

MATRIX SPIKE SAMPLE: 42700

Parameter	Units	927329028 Result	Spike Conc.	MS Result	MS % Rec	% Rec Limits	Qualifiers
Gasoline Range Organics	mg/kg	ND	26.1	28.9	111	70-148	
4-Bromofluorobenzene (S)	%				81	50-135	

SAMPLE DUPLICATE: 42701

Parameter	Units	927329033 Result	Dup Result	RPD	Qualifiers
Gasoline Range Organics	mg/kg	ND	ND	0	
4-Bromofluorobenzene (S)	%		75	3	

### QUALITY CONTROL DATA

Project: NCDOT 00907/WSB#32782.1.1

Pace Project No.: 927329

QC Batch: GCV/1393

Analysis Method: EPA 5030/8015 Mod.

QC Batch Method: EPA 5030/8015 Mod.

Analysis Description: Gasoline Range Organics

Associated Lab Samples: 927329034

METHOD BLANK: 43953

Associated Lab Samples: 927329034

Parameter	Units	Blank Result	Reporting Limit	Qualifiers
Gasoline Range Organics	mg/L	ND	0.080	
4-Bromofluorobenzene (S)	%	77	50-150	

LABORATORY CONTROL SAMPLE: 43954

Parameter	Units	Spike Conc.	LCS Result	LCS % Rec	% Rec Limits	Qualifiers
Gasoline Range Organics	mg/L	.5	0.55	111	70-137	
4-Bromofluorobenzene (S)	%			85	50-150	

SAMPLE DUPLICATE: 43955

Parameter	Units	927329034 Result	Dup Result	RPD	Qualifiers
Gasoline Range Organics	mg/L	ND	ND	0	
4-Bromofluorobenzene (S)	%	78	79	1	



## QUALIFIERS

Project: NCDOT 00907/WSB#32782.1.1

Pace Project No.: 927329

---

### DEFINITIONS

DF - Dilution Factor, if reported, represents the factor applied to the reported data due to changes in sample preparation, dilution of the sample aliquot, or moisture content.

ND - Not Detected at or above adjusted reporting limit.

J - Estimated concentration above the adjusted method detection limit and below the adjusted reporting limit.

MDL - Adjusted Method Detection Limit.

S - Surrogate

1,2-Diphenylhydrazine (8270 listed analyte) decomposes to Azobenzene.

Consistent with EPA guidelines, unrounded data are displayed and have been used to calculate % recovery and RPD values.

LCS(D) - Laboratory Control Sample (Duplicate)

MS(D) - Matrix Spike (Duplicate)

DUP - Sample Duplicate

RPD - Relative Percent Difference

NC - Not Calculable.

Pace Analytical is NELAP accredited. Contact your Pace PM for the current list of accredited analytes.

### ANALYTE QUALIFIERS

R1 RPD value was outside control limits.

S5 Surrogate recovery outside control limits due to matrix interferences (not confirmed by re-analysis).

1g The spike Recovery was outside acceptance limits for the MS and MSD due to an analyte concentration in the sample at four times greater than the spike concentration. The QC batch was accepted based upon LCS recoveries within acceptance limits.

2g The spike recovery was outside acceptance limits for the MS and MSD due to an analyte concentration in the sample at four times greater than the spike concentration. The QC batch was accepted based upon LCS recoveries within acceptance limits.

November 27, 2007

Mr. Bob Miller  
General Engineering  
PO Box 14262  
Research Triangle, NC 27709

RE: Project: NCDT00907C/WBS#32782.1.1  
Pace Project No.: 927717

Dear Mr. Miller:

Enclosed are the analytical results for sample(s) received by the laboratory on November 13, 2007. The results relate only to the samples included in this report. Results reported herein conform to the most current NELAC standards, where applicable, unless otherwise narrated in the body of the report.

Inorganic Wet Chemistry and Metals analyses were performed at our Pace Asheville laboratory and Organic testing was performed at our Pace Huntersville laboratory unless otherwise footnoted. All Microbiological analyses were performed at the laboratory where the samples were received.

If you have any questions concerning this report, please feel free to contact me.

Sincerely,



Annette Scott

annette.scott@pacelabs.com  
Project Manager

Enclosures

cc: Mr. Christopher Peoples, NCDOT- Materials & Test Unit

## REPORT OF LABORATORY ANALYSIS

Page 1 of 19

This report shall not be reproduced, except in full,  
without the written consent of Pace Analytical Services, Inc..



## CERTIFICATIONS

Project: NCDT00907C/WBS#32782.1.1

Pace Project No.: 927717

---

### Charlotte Certification IDs

Florida/NELAP Certification Number: E87627

Kansas Certification Number: E-10364

Louisiana/LELAP Certification Number: 04034

North Carolina Drinking Water Certification Number: 37706

North Carolina Wastewater Certification Number: 12

North Carolina Field Services Certification Number: 5342

South Carolina Certification Number: 990060001

South Carolina Bioassay Certification Number: 990060003

Tennessee Certification Number: 04010

Virginia Certification Number: 00213

---

### Asheville Certification IDs

Florida/NELAP Certification Number: E87648

Louisiana/LELAP Certification Number: 03095

New Jersey Certification Number: NC011

North Carolina Drinking Water Certification Number: 37712

North Carolina Wastewater Certification Number: 40

North Carolina Bioassay Certification Number: 9

Pennsylvania Certification Number: 68-03578

South Carolina Certification Number: 99030001

South Carolina Bioassay Certification Number: 99030002

Tennessee Certification Number: 2980

Virginia Certification Number: 00072

---

### Eden Certification IDs

North Carolina Drinking Water Certification Number: 37738

Virginia Drinking Water Certification Number: 00424

North Carolina Wastewater Certification Number: 633

---

## REPORT OF LABORATORY ANALYSIS

Page 2 of 19

This report shall not be reproduced, except in full,  
without the written consent of Pace Analytical Services, Inc..



## ANALYTICAL RESULTS

Project: NCDT00907C/WBS#32782.1.1

Pace Project No.: 927717

**Sample: SS-27-7**      **Lab ID: 927717001**      Collected: 11/09/07 09:25      Received: 11/13/07 16:35      Matrix: Solid

**Results reported on a "dry-weight" basis**

Parameters	Results	Units	Report Limit	DF	Prepared	Analyzed	CAS No.	Qual
<b>8015 GCS THC-Diesel for ASE</b>		Analytical Method: EPA 8015 Modified    Preparation Method: EPA 3545						
Diesel Components	ND	mg/kg	5.1	1	11/16/07 00:00	11/19/07 20:22	68334-30-5	
n-Pentacosane (S)	69	%	50-135	1	11/16/07 00:00	11/19/07 20:22	629-99-2	
<b>Gasoline Range Organics</b>		Analytical Method: EPA 8015 Modified    Preparation Method: EPA 5035A/5030B						
Gasoline Range Organics	ND	mg/kg	5.8	1	11/16/07 18:50	11/16/07 22:36	8006-61-9	
4-Bromofluorobenzene (S)	83	%	50-135	1	11/16/07 18:50	11/16/07 22:36	460-00-4	
<b>Percent Moisture</b>		Analytical Method: ASTM D2974-87						
Percent Moisture	2.2	%	0.10	1		11/15/07 15:49		

## ANALYTICAL RESULTS

Project: NCDT00907C/WBS#32782.1.1

Pace Project No.: 927717

**Sample: SS-28-7**      **Lab ID: 927717002**      Collected: 11/09/07 10:30      Received: 11/13/07 16:35      Matrix: Solid

**Results reported on a "dry-weight" basis**

Parameters	Results	Units	Report Limit	DF	Prepared	Analyzed	CAS No.	Qual
<b>8015 GCS THC-Diesel for ASE</b>		Analytical Method: EPA 8015 Modified    Preparation Method: EPA 3545						
Diesel Components	<b>9.9</b>	mg/kg	5.5	1	11/16/07 00:00	11/19/07 20:22	68334-30-5	
n-Pentacosane (S)	73	%	50-135	1	11/16/07 00:00	11/19/07 20:22	629-99-2	
<b>Gasoline Range Organics</b>		Analytical Method: EPA 8015 Modified    Preparation Method: EPA 5035A/5030B						
Gasoline Range Organics	ND	mg/kg	5.0	1	11/16/07 18:50	11/16/07 23:37	8006-61-9	
4-Bromofluorobenzene (S)	81	%	50-135	1	11/16/07 18:50	11/16/07 23:37	460-00-4	
<b>Percent Moisture</b>		Analytical Method: ASTM D2974-87						
Percent Moisture	<b>9.1</b>	%	0.10	1		11/15/07 15:49		

## ANALYTICAL RESULTS

Project: NCDT00907C/WBS#32782.1.1

Pace Project No.: 927717

**Sample: SS-29-7**      **Lab ID: 927717003**      Collected: 11/09/07 10:45      Received: 11/13/07 16:35      Matrix: Solid

**Results reported on a "dry-weight" basis**

Parameters	Results	Units	Report Limit	DF	Prepared	Analyzed	CAS No.	Qual
<b>8015 GCS THC-Diesel for ASE</b>		Analytical Method: EPA 8015 Modified    Preparation Method: EPA 3545						
Diesel Components	ND	mg/kg	6.3	1	11/16/07 00:00	11/19/07 20:48	68334-30-5	
n-Pentacosane (S)	61	%	50-135	1	11/16/07 00:00	11/19/07 20:48	629-99-2	
<b>Gasoline Range Organics</b>		Analytical Method: EPA 8015 Modified    Preparation Method: EPA 5035A/5030B						
Gasoline Range Organics	ND	mg/kg	7.2	1	11/16/07 18:50	11/16/07 23:58	8006-61-9	
4-Bromofluorobenzene (S)	71	%	50-135	1	11/16/07 18:50	11/16/07 23:58	460-00-4	
<b>Percent Moisture</b>		Analytical Method: ASTM D2974-87						
Percent Moisture	<b>21.2</b>	%	0.10	1		11/15/07 15:49		

## ANALYTICAL RESULTS

Project: NCDT00907C/WBS#32782.1.1

Pace Project No.: 927717

**Sample: SS-30-5**      **Lab ID: 927717004**      Collected: 11/09/07 11:05      Received: 11/13/07 16:35      Matrix: Solid

**Results reported on a "dry-weight" basis**

Parameters	Results	Units	Report Limit	DF	Prepared	Analyzed	CAS No.	Qual
<b>8015 GCS THC-Diesel for ASE</b>		Analytical Method: EPA 8015 Modified    Preparation Method: EPA 3545						
Diesel Components	ND	mg/kg	5.1	1	11/16/07 00:00	11/19/07 20:48	68334-30-5	
n-Pentacosane (S)	78	%	50-135	1	11/16/07 00:00	11/19/07 20:48	629-99-2	
<b>Gasoline Range Organics</b>		Analytical Method: EPA 8015 Modified    Preparation Method: EPA 5035A/5030B						
Gasoline Range Organics	ND	mg/kg	6.3	1	11/16/07 18:50	11/17/07 00:18	8006-61-9	
4-Bromofluorobenzene (S)	81	%	50-135	1	11/16/07 18:50	11/17/07 00:18	460-00-4	
<b>Percent Moisture</b>		Analytical Method: ASTM D2974-87						
Percent Moisture	1.7	%	0.10	1		11/15/07 15:50		

### ANALYTICAL RESULTS

Project: NCDT00907C/WBS#32782.1.1

Pace Project No.: 927717

**Sample: SS-31-3**      **Lab ID: 927717005**      Collected: 11/09/07 11:25      Received: 11/13/07 16:35      Matrix: Solid

**Results reported on a "dry-weight" basis**

Parameters	Results	Units	Report Limit	DF	Prepared	Analyzed	CAS No.	Qual
<b>8015 GCS THC-Diesel for ASE</b>		Analytical Method: EPA 8015 Modified    Preparation Method: EPA 3545						
Diesel Components	ND	mg/kg	5.3	1	11/16/07 00:00	11/19/07 21:13	68334-30-5	
n-Pentacosane (S)	72	%	50-135	1	11/16/07 00:00	11/19/07 21:13	629-99-2	
<b>Gasoline Range Organics</b>		Analytical Method: EPA 8015 Modified    Preparation Method: EPA 5035A/5030B						
Gasoline Range Organics	ND	mg/kg	4.8	1	11/16/07 18:50	11/17/07 00:39	8006-61-9	
4-Bromofluorobenzene (S)	81	%	50-135	1	11/16/07 18:50	11/17/07 00:39	460-00-4	
<b>Percent Moisture</b>		Analytical Method: ASTM D2974-87						
Percent Moisture	6.5	%	0.10	1		11/15/07 15:50		



### ANALYTICAL RESULTS

Project: NCDT00907C/WBS#32782.1.1

Pace Project No.: 927717

**Sample: SS-32-7**      **Lab ID: 927717006**      Collected: 11/09/07 11:45      Received: 11/13/07 16:35      Matrix: Solid

**Results reported on a "dry-weight" basis**

Parameters	Results	Units	Report Limit	DF	Prepared	Analyzed	CAS No.	Qual
<b>8015 GCS THC-Diesel for ASE</b>		Analytical Method: EPA 8015 Modified    Preparation Method: EPA 3545						
Diesel Components	ND	mg/kg	5.3	1	11/16/07 00:00	11/19/07 21:13	68334-30-5	
n-Pentacosane (S)	67	%	50-135	1	11/16/07 00:00	11/19/07 21:13	629-99-2	
<b>Gasoline Range Organics</b>		Analytical Method: EPA 8015 Modified    Preparation Method: EPA 5035A/5030B						
Gasoline Range Organics	ND	mg/kg	6.2	1	11/16/07 18:50	11/17/07 00:59	8006-61-9	
4-Bromofluorobenzene (S)	79	%	50-135	1	11/16/07 18:50	11/17/07 00:59	460-00-4	
<b>Percent Moisture</b>		Analytical Method: ASTM D2974-87						
Percent Moisture	5.6	%	0.10	1		11/15/07 15:50		

## ANALYTICAL RESULTS

Project: NCDT00907C/WBS#32782.1.1

Pace Project No.: 927717

**Sample: SS-33-5**      **Lab ID: 927717007**      Collected: 11/09/07 12:00      Received: 11/13/07 16:35      Matrix: Solid

**Results reported on a "dry-weight" basis**

Parameters	Results	Units	Report Limit	DF	Prepared	Analyzed	CAS No.	Qual
<b>8015 GCS THC-Diesel for ASE</b>		Analytical Method: EPA 8015 Modified    Preparation Method: EPA 3545						
Diesel Components	ND	mg/kg	10.9	1	11/16/07 00:00	11/19/07 21:39	68334-30-5	
n-Pentacosane (S)	73	%	50-135	1	11/16/07 00:00	11/19/07 21:39	629-99-2	
<b>Gasoline Range Organics</b>		Analytical Method: EPA 8015 Modified    Preparation Method: EPA 5035A/5030B						
Gasoline Range Organics	ND	mg/kg	5.0	1	11/16/07 18:50	11/17/07 01:19	8006-61-9	
4-Bromofluorobenzene (S)	78	%	50-135	1	11/16/07 18:50	11/17/07 01:19	460-00-4	
<b>Percent Moisture</b>		Analytical Method: ASTM D2974-87						
Percent Moisture	8.6	%	0.10	1		11/15/07 15:50		

## ANALYTICAL RESULTS

Project: NCDT00907C/WBS#32782.1.1

Pace Project No.: 927717

**Sample: SS-34-7**      **Lab ID: 927717008**      Collected: 11/09/07 12:15      Received: 11/13/07 16:35      Matrix: Solid

**Results reported on a "dry-weight" basis**

Parameters	Results	Units	Report Limit	DF	Prepared	Analyzed	CAS No.	Qual
<b>8015 GCS THC-Diesel for ASE</b>		Analytical Method: EPA 8015 Modified    Preparation Method: EPA 3545						
Diesel Components	ND	mg/kg	5.8	1	11/16/07 00:00	11/19/07 21:39	68334-30-5	
n-Pentacosane (S)	64	%	50-135	1	11/16/07 00:00	11/19/07 21:39	629-99-2	
<b>Gasoline Range Organics</b>		Analytical Method: EPA 8015 Modified    Preparation Method: EPA 5035A/5030B						
Gasoline Range Organics	ND	mg/kg	4.6	1	11/16/07 18:50	11/17/07 01:40	8006-61-9	
4-Bromofluorobenzene (S)	80	%	50-135	1	11/16/07 18:50	11/17/07 01:40	460-00-4	
<b>Percent Moisture</b>		Analytical Method: ASTM D2974-87						
Percent Moisture	<b>14.1</b>	%	0.10	1		11/15/07 15:50		

## ANALYTICAL RESULTS

Project: NCDT00907C/WBS#32782.1.1

Pace Project No.: 927717

**Sample: SS-35-3**      **Lab ID: 927717009**      Collected: 11/09/07 12:30      Received: 11/13/07 16:35      Matrix: Solid

**Results reported on a "dry-weight" basis**

Parameters	Results	Units	Report Limit	DF	Prepared	Analyzed	CAS No.	Qual
<b>8015 GCS THC-Diesel for ASE</b>		Analytical Method: EPA 8015 Modified    Preparation Method: EPA 3545						
Diesel Components	ND	mg/kg	5.8	1	11/16/07 00:00	11/20/07 09:33	68334-30-5	
n-Pentacosane (S)	89	%	50-135	1	11/16/07 00:00	11/20/07 09:33	629-99-2	
<b>Gasoline Range Organics</b>		Analytical Method: EPA 8015 Modified    Preparation Method: EPA 5035A/5030B						
Gasoline Range Organics	ND	mg/kg	5.4	1	11/16/07 18:50	11/17/07 02:00	8006-61-9	
4-Bromofluorobenzene (S)	80	%	50-135	1	11/16/07 18:50	11/17/07 02:00	460-00-4	
<b>Percent Moisture</b>		Analytical Method: ASTM D2974-87						
Percent Moisture	<b>14.0</b>	%	0.10	1		11/15/07 15:51		

## ANALYTICAL RESULTS

Project: NCDT00907C/WBS#32782.1.1

Pace Project No.: 927717

Sample: <b>SS-27-GW</b>		Lab ID: <b>927717010</b>		Collected: 11/09/07 09:35	Received: 11/13/07 16:35	Matrix: Water		
Parameters	Results	Units	Report Limit	DF	Prepared	Analyzed	CAS No.	Qual
<b>8015 GCS THC-Diesel</b>		Analytical Method: EPA 8015 Modified Preparation Method: EPA 3510						
Diesel Components	ND mg/L		0.12	1	11/14/07 00:00	11/15/07 18:58	68334-30-5	
n-Pentacosane (S)	75 %		50-135	1	11/14/07 00:00	11/15/07 18:58	629-99-2	
<b>Gasoline Range Organics</b>		Analytical Method: EPA 5030/8015 Mod.						
Gasoline Range Organics	ND mg/L		0.080	1		11/20/07 17:30	8006-61-9	
4-Bromofluorobenzene (S)	80 %		50-150	1		11/20/07 17:30	460-00-4	

## ANALYTICAL RESULTS

Project: NCDT00907C/WBS#32782.1.1

Pace Project No.: 927717

Sample: <b>SS-35-GW</b>		Lab ID: <b>927717011</b>	Collected: 11/09/07 14:00	Received: 11/13/07 16:35	Matrix: Water			
Parameters	Results	Units	Report Limit	DF	Prepared	Analyzed	CAS No.	Qual
<b>8015 GCS THC-Diesel</b>		Analytical Method: EPA 8015 Modified Preparation Method: EPA 3510						
Diesel Components	<b>0.70</b> mg/L		0.50	1	11/14/07 00:00	11/15/07 18:58	68334-30-5	
n-Pentacosane (S)	76 %		50-135	1	11/14/07 00:00	11/15/07 18:58	629-99-2	
<b>Gasoline Range Organics</b>		Analytical Method: EPA 5030/8015 Mod.						
Gasoline Range Organics	<b>2.8</b> mg/L		0.080	1		11/20/07 17:50	8006-61-9	
4-Bromofluorobenzene (S)	91 %		50-150	1		11/20/07 17:50	460-00-4	

### QUALITY CONTROL DATA

Project: NCDT00907C/WBS#32782.1.1

Pace Project No.: 927717

QC Batch: OEXT/1729

Analysis Method: EPA 8015 Modified

QC Batch Method: EPA 3510

Analysis Description: 8015 GCS

Associated Lab Samples: 927717010, 927717011

METHOD BLANK: 41069

Associated Lab Samples: 927717010, 927717011

Parameter	Units	Blank Result	Reporting Limit	Qualifiers
Diesel Components	mg/L	ND	0.10	
n-Pentacosane (S)	%	76	50-135	

LABORATORY CONTROL SAMPLE & LCSD: 41070

41071

Parameter	Units	Spike Conc.	LCS Result	LCSD Result	LCS % Rec	LCSD % Rec	% Rec Limits	RPD	Max RPD	Qualifiers
Diesel Components	mg/L	5	3.6	4.1	72	81	50-110	12	30	
n-Pentacosane (S)	%				84	85	50-135			







### QUALITY CONTROL DATA

Project: NCDT00907C/WBS#32782.1.1

Pace Project No.: 927717

QC Batch: GCV/1382

Analysis Method: EPA 8015 Modified

QC Batch Method: EPA 5035A/5030B

Analysis Description: Gasoline Range Organics

Associated Lab Samples: 927717001, 927717002, 927717003, 927717004, 927717005, 927717006, 927717007, 927717008, 927717009

METHOD BLANK: 42859

Associated Lab Samples: 927717001, 927717002, 927717003, 927717004, 927717005, 927717006, 927717007, 927717008, 927717009

Parameter	Units	Blank Result	Reporting Limit	Qualifiers
Gasoline Range Organics	mg/kg	ND	6.0	
4-Bromofluorobenzene (S)	%	84	50-135	

LABORATORY CONTROL SAMPLE: 42860

Parameter	Units	Spike Conc.	LCS Result	LCS % Rec	% Rec Limits	Qualifiers
Gasoline Range Organics	mg/kg	25	29.3	117	70-150	
4-Bromofluorobenzene (S)	%			80	50-135	

MATRIX SPIKE SAMPLE: 42861

Parameter	Units	927626001 Result	Spike Conc.	MS Result	MS % Rec	% Rec Limits	Qualifiers
Gasoline Range Organics	mg/kg	ND	32.5	37.9	117	70-148	
4-Bromofluorobenzene (S)	%				92	50-135	

SAMPLE DUPLICATE: 42862

Parameter	Units	927626002 Result	Dup Result	RPD	Qualifiers
Gasoline Range Organics	mg/kg	ND	ND	0	
4-Bromofluorobenzene (S)	%		78	3	

### QUALITY CONTROL DATA

Project: NCDT00907C/WBS#32782.1.1

Pace Project No.: 927717

QC Batch: GCV/1393

Analysis Method: EPA 5030/8015 Mod.

QC Batch Method: EPA 5030/8015 Mod.

Analysis Description: Gasoline Range Organics

Associated Lab Samples: 927717010, 927717011

METHOD BLANK: 43953

Associated Lab Samples: 927717010, 927717011

Parameter	Units	Blank Result	Reporting Limit	Qualifiers
Gasoline Range Organics	mg/L	ND	0.080	
4-Bromofluorobenzene (S)	%	77	50-150	

LABORATORY CONTROL SAMPLE: 43954

Parameter	Units	Spike Conc.	LCS Result	LCS % Rec	% Rec Limits	Qualifiers
Gasoline Range Organics	mg/L	.5	0.55	111	70-137	
4-Bromofluorobenzene (S)	%			85	50-150	

SAMPLE DUPLICATE: 43955

Parameter	Units	927329034 Result	Dup Result	RPD	Qualifiers
Gasoline Range Organics	mg/L	ND	ND	0	
4-Bromofluorobenzene (S)	%	78	79	1	

## QUALIFIERS

Project: NCDT00907C/WBS#32782.1.1

Pace Project No.: 927717

---

### DEFINITIONS

DF - Dilution Factor, if reported, represents the factor applied to the reported data due to changes in sample preparation, dilution of the sample aliquot, or moisture content.

ND - Not Detected at or above adjusted reporting limit.

J - Estimated concentration above the adjusted method detection limit and below the adjusted reporting limit.

MDL - Adjusted Method Detection Limit.

S - Surrogate

1,2-Diphenylhydrazine (8270 listed analyte) decomposes to Azobenzene.

Consistent with EPA guidelines, unrounded data are displayed and have been used to calculate % recovery and RPD values.

LCS(D) - Laboratory Control Sample (Duplicate)

MS(D) - Matrix Spike (Duplicate)

DUP - Sample Duplicate

RPD - Relative Percent Difference

NC - Not Calculable.

Pace Analytical is NELAP accredited. Contact your Pace PM for the current list of accredited analytes.

### ANALYTE QUALIFIERS

M0 Matrix spike recovery was outside laboratory control limits.

S5 Surrogate recovery outside control limits due to matrix interferences (not confirmed by re-analysis).

# CHAIN-OF-CUSTODY / Analytical Request Document

The Chain-of-Custody is a LEGAL DOCUMENT. All relevant fields must be completed accurately.



Section A Required Client Information:		Section B Required Project Information:		Section C Invoice Information:	
Company: GEL Engineering & NC, Inc	Report To: SAME	Attention: JENNIFER	Company Name: JENNIFER	Invoice No.: 1135394	Page: 1 of 1
Address: P.O. Box 1422	Copy To:	Company Address: TO	Address: TO	Regulatory Agency: NPDDES	GROUND WATER
Phone: 919-544-1106	Purchase Order No.: NCDT00907	Pace Quote Reference: NCDOT	Pace Project Manager:	UST	RCRA
Requested Due Date/TAT:	Project Name: WBS No. 32782.1.1	Pace Profile #:	Site Location STATE: NC	DRINKING WATER	OTHER

ITEM #	Section D Required Client Information	Section E Matrix Codes MATRIX / CODE	COLLECTED		SAMPLE TYPE (G=GRAB C=COMP)	MATRIX CODE (see valid codes to left)	SAMPLE TEMP AT COLLECTION	# OF CONTAINERS	Preservatives	Y/N	Requested Analysis Filtered (Y/N)	Temp in °C	Received on	Custody Sealed Cooler	Samples Intact (Y/N)
			COMPOSITE START	COMPOSITE END/GRAB											
1	SS-12-5	Drinking Water													
2	SS-12-3	Water													
3	SS-14-7	Waste Water													
4	SS-15-5	Product													
5	SS-17-5	Soil/Solid													
6	SS-3-5	Oil													
7	SS-2-3	Wipe													
8	SS-4-5	Air													
9	SS-5-7	Other													
10	SS-6-7														
11	SS-7-7														
12															

RELINQUISHED BY / AFFILIATION	DATE	TIME	ACCEPTED BY / AFFILIATION	DATE	TIME	SAMPLE CONDITIONS
[Signature]	11/10/07	0900	[Signature]	11/17/07	0943	
ADDITIONAL COMMENTS						
SAMPLER NAME AND SIGNATURE						
PRINT Name of SAMPLER: [Signature]						
SIGNATURE of SAMPLER: [Signature]						
DATE Signed (MM/DD/YYYY): 11/17/07						

# CHAIN-OF-CUSTODY / Analytical Request Document

The Chain-of-Custody is a LEGAL DOCUMENT. All relevant fields must be completed accurately.



Section A Required Client Information:		Section B Required Project Information:		Section C Invoice Information:	
Company: GEL Engineering of N.C., Inc.	Report To: Bob Miller	Company Name: NCCDOT	Attention:	Company Name: NCCDOT	Page: 1 of 2
Address: P.O. Box 14242	Copy To:	Address: State Project 16-2165		REGULATORY AGENCY: 1135395	
RTP, NC 27709		Purchase Order No.: NCCDOT		NPDES <input type="checkbox"/> GROUND WATER <input type="checkbox"/> DRINKING WATER <input type="checkbox"/>	
Email To: bobmiller@aol.com		Project Name: wastewater treatment		UST <input type="checkbox"/> RCRA <input type="checkbox"/> OTHER <input type="checkbox"/>	
Phone: 919-544-1100 Fax: 919-544-4755		Project Number: 82065 005322011		Site Location: NC	
Requested Due Date/TAT: std		Pace Profile #:		STATE: NC	

ITEM #	Section D Required Client Information	Matrix Codes MATRIX / CODE	MATRIX CODE (see valid codes to left)	COLLECTED		SAMPLE TEMP AT COLLECTION	# OF CONTAINERS	Preservatives	Y/N	Requested Analysis Filtered (Y/N)	Pace Project No./ Lab I.D.	
				COMPOSITE START	COMPOSITE END/GRAB							
Section E Required Project Information		Section F Relinquished by / Affiliation		Section G Accepted by / Affiliation		Section H Date		Section I Time		Section J Sample Conditions		
Additional Comments		RELINQUISHED BY / AFFILIATION	DATE	ACCEPTED BY / AFFILIATION	DATE	TIME	DATE	TIME	Temp in °C	Received on	Custody	Samples Intact
1	SS-12-3 (SS-10-8)	DW	SLG	11/6/07 16:20	11/6/07 16:30	4	Unpreserved	X				
2	SS-9-3	WT	SLG	11/6/07 16:30	11/6/07 16:50	4	H <sub>2</sub> SO <sub>4</sub>	X				
3	SS-8-7	WW	SLG	11/6/07 16:50	11/7/07 9:35	4	HNO <sub>3</sub>	X				
4	SS-16-7	P	SLG	11/7/07 9:35	11/7/07 9:40	5	NaOH	X				
5	SS-16-GW	OL	WTG	11/7/07 9:40	11/7/07 11:00	4	HCl	X				
6	SS-13-5	WP	SLG	11/7/07 11:00	11/7/07 11:15	4	Na <sub>2</sub> S <sub>2</sub> O <sub>3</sub>	X				
7	SS-14-5	AR	SLG	11/7/07 11:15	11/7/07 11:45	4	Other	X				
8	SS-15-5	TS	SLG	11/7/07 11:45	11/7/07 11:55	5	Methanol	X				
9	SS-15-GW	OT	WTG	11/7/07 11:55	11/2/07 13:40	4	Unpreserved	X				
10	SS-16-5		SLG	11/2/07 13:40	11/7/07 14:00	4	Unpreserved	X				
11	SS-17-5		SLG	11/7/07 14:00	11/2/07 14:10	4	Unpreserved	X				
12	SS-18-5		SLG	11/2/07 14:10		4	Unpreserved	X				
Additional Comments: Bob Miller		RELINQUISHED BY / AFFILIATION: Bob Miller	DATE: 11/9/07	ACCEPTED BY / AFFILIATION: [Signature]	DATE: 11/9/07	TIME: 12:01	DATE: 11/9/07	TIME: 12:01	Temp in °C:	Received on: 11/9/07	Custody: [Signature]	Samples Intact: [Signature]

SAMPLER NAME AND SIGNATURE	
PRINT Name of SAMPLER: Alan B. Phillips	DATE Signed (MM/DD/YYYY): 11/9/07
SIGNATURE of SAMPLER: [Signature]	



# CHAIN-OF-CUSTODY / Analytical Request Document

The Chain-of-Custody is a LEGAL DOCUMENT. All relevant fields must be completed accurately.



Page: 1 of 1	1135397
Section A Required Client Information:	Section B Required Project Information:
Company: GEL Engineering of NS, Inc.	Report To: Bob Miller
Address: P.O. Box 14262	Copy To:
Email To: RPT, NC 27709	Purchase Order No.: NC0700077
Phone: 919-544-1100	Project Name: Fiberglass under PDA
Requested Due Date/TAT:	Project Number: 11/9/07 B-2965 WBS # 32782.1.1
Section C Invoice Information:	
Attention: Invoice	
Company Name: NC DOT	
Address:	
Regulatory Agency:	
NPDES <input type="checkbox"/> GROUND WATER <input type="checkbox"/> DRINKING WATER <input type="checkbox"/>	
UST <input checked="" type="checkbox"/> RCRA <input type="checkbox"/> OTHER <input type="checkbox"/>	
Site Location:	
STATE: NC	

ITEM #	Section D Required Client Information	Section E Matrix Codes MATRIX / CODE	Section F Matrix Codes MATRIX / CODE	Section G SAMPLE TYPE (G=GRAB C=COMP)	Section H COLLECTED		Section I SAMPLE TEMP AT COLLECTION	Section J # OF CONTAINERS	Section K Preservatives	Section L Analysis Test ↑ Y/N ↓	Section M Requested Analysis Filtered (Y/N)	Section N Pace Project No. / Lab I.D.
					COMPOSITE START	COMPOSITE END/GRAB						
					DATE	TIME						
1	SS-27-7	DW	DW	SLG	11/9/07	9:25	4		X			
2	SS-27-GW	WT	WT	WTG	11/7/07	9:35	5		X			
3	SS-28-7	WW	WW	SLG	11/9/07	10:30	4					
4	SS-29-7	P	P	SLG	11/9/07	10:45	4					
5	SS-30-5	SL	SL	SLG	11/9/07	11:05	4					
6	SS-31-3	OL	OL	SLG	11/9/07	11:25	4					
7	SS-32-7	WP	WP	SLG	11/9/07	11:45	4					
8	SS-33-5	AR	AR	SLG	11/9/07	12:00	4					
9	SS-34-7	TS	TS	SLG	11/9/07	12:15	4					
10	SS-35-3	OT	OT	SLG	11/9/07	12:30	4					
11	SS-35-GW			WTG	11/9/07	19:00	4					
12												

Section O Additional Comments	Section P Relinquished By / Affiliation	Section Q Date	Section R Time	Section S Accepted By / Affiliation	Section T Date	Section U Time	Section V Sample Conditions
SS-35-GW 24 HRS in lab	Bob Miller	11/9/07	9:55	Bob Miller	11/17/07	9:50	
dry Alex before exchange and was sampled with my 144							
the Probe Use manual provided							

Temp in °C	Received on	Custody Sealed Cooler	Samples Intact
SAMPLER NAME AND SIGNATURE			
PRINT Name of SAMPLER: Adam B. Phillips			
SIGNATURE of SAMPLER:			
DATE Signed (MM/DD/YYYY): 11/9/07			

Important Note: By signing this form you are accepting Pace's NET 30 day payment terms and agreeing to late charges of 1.5% per month for any invoices not paid within 30 days. F-ALL-Q-020rev.07. 15-May-2007