

09/08/99

TIP PROJECT: B-4316

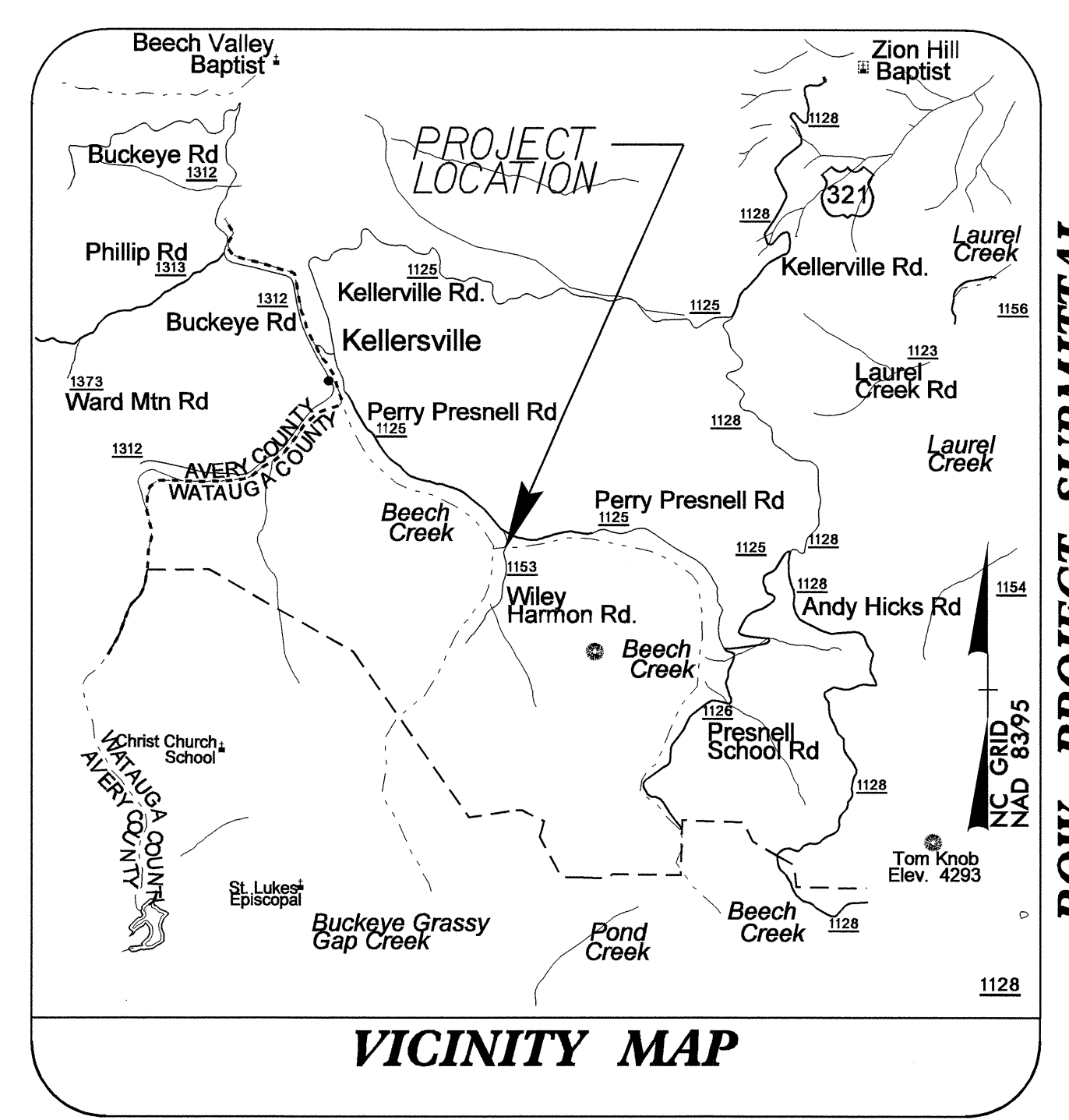
T.I.P. NO.	SHEET NO.
B-4316	UO-1

STATE OF NORTH CAROLINA
DIVISION OF HIGHWAYS

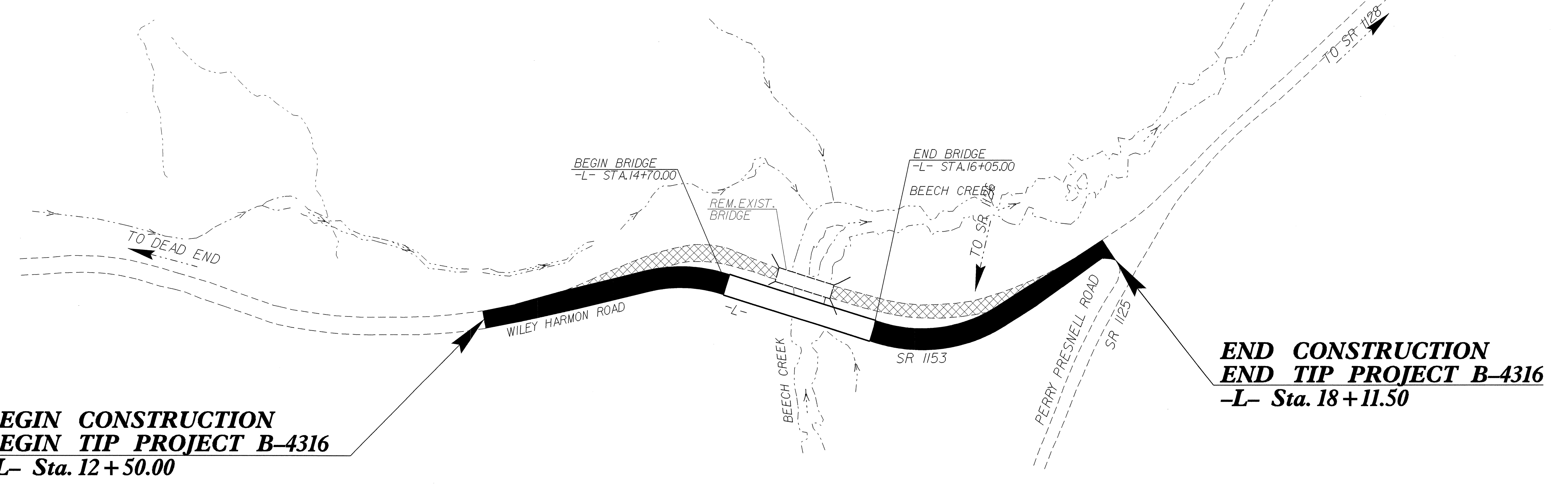
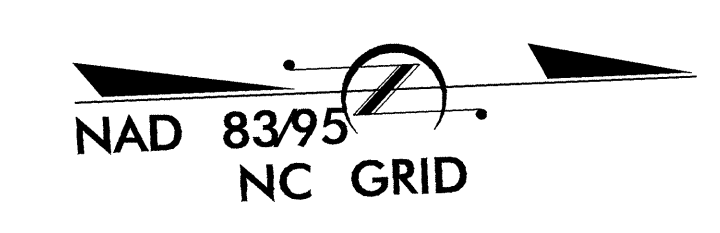
UTILITY BY OTHERS PLANS
WATAUGA COUNTY

LOCATION: BRIDGE NO. 320 OVER BEECH CREEK
ON SR 1153 (WILEY HARMON ROAD)

TYPE OF WORK: RELOCATION OF UTILITY LINES

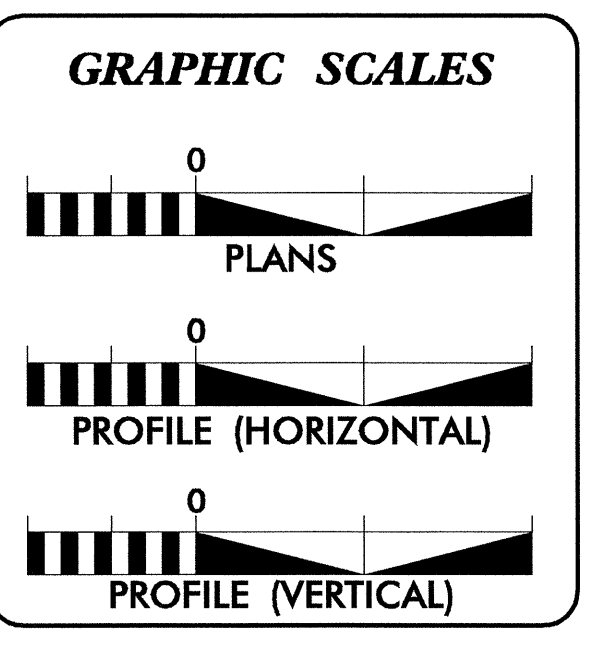


ROW PROJECT SUBMITTAL



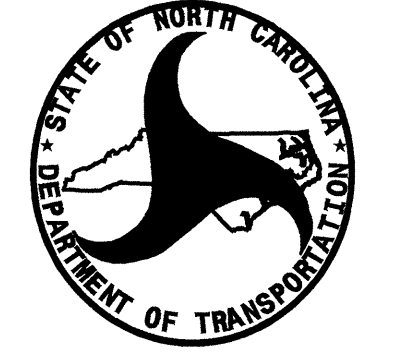
BEGIN CONSTRUCTION
BEGIN TIP PROJECT B-4316
-L- Sta. 12 + 50.00

END CONSTRUCTION
END TIP PROJECT B-4316
-L- Sta. 18 + 11.50



INDEX OF SHEETS	
SHEET NO.	DESCRIPTION
UO-1	TITLE SHEET
UO-02	UTILITY BY OTHERS PLAN SHEET

UTILITY OWNERS ON PROJECT
(1) Blue Ridge EMC
(2) Skyline Telephone Membership Corporation



PREPARED IN THE OFFICE OF:
DIVISION OF HIGHWAYS
DESIGN SERVICES
UTILITY SECTION

1591 MAIL SERVICES CENTER
RALEIGH, NC 27699-1591
PHONE (919) 250-4128
FAX (919) 250-4119

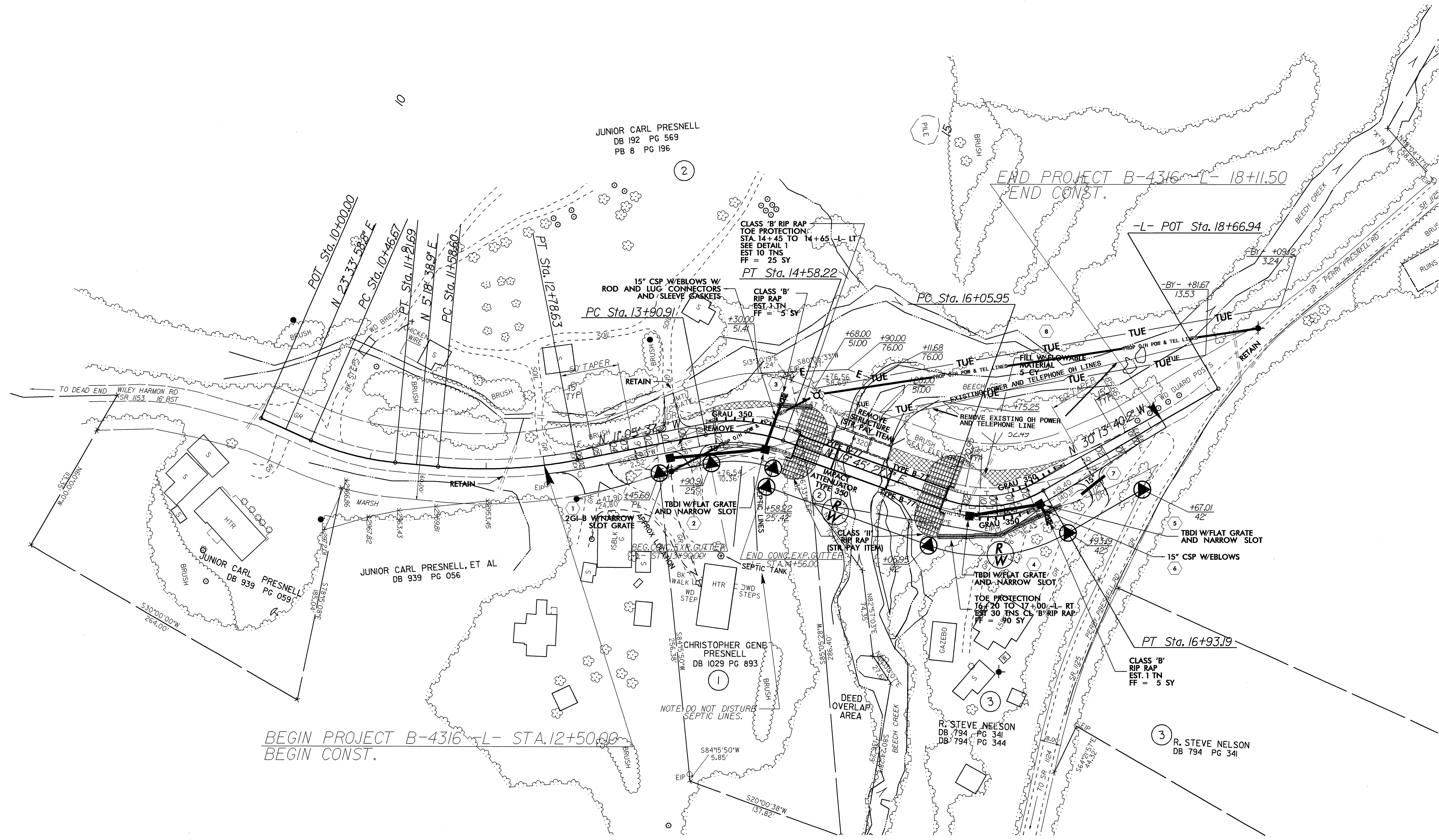
Roger Worthington, P.E. UTILITIES SECTION ENGINEER
Corey Bousquet, P.E. UTILITIES SQUAD LEADER PROJECT ENGINEER
Kifah Kamil UTILITIES PROJECT DESIGNER

08-OCT-2008 15:37
F:\Utilities\pdy-ut\proj\b4316_ut_uo1_tsh.dgn
\$\$\$\$\$USERNAME\$\$\$\$\$

UTILITIES BY OTHERS

NOTE:
ALL PROPOSED UTILITY WORK
SHOWN ON THIS SHEET WILL
BE DONE BY OTHERS

-L-			
PI Sta 10+84.50	PI Sta 12+19.03	PI Sta 14+25.40	PI Sta 16+52.57
$\Delta = 18' 15" 20.0"$ (LT)	$\Delta = 16' 24" 16.2"$ (LT)	$\Delta = 30' 51" 05.0"$ (RT)	$\Delta = 49' 59" 07.8"$ (LT)
$D = 24' 20" 00.0"$	$D = 13' 40" 00.0"$	$D = 45' 50" 11.8"$	$D = 57' 17" 44.8"$
$L = 75.02'$	$L = 120.03'$	$L = 67.31'$	$L = 87.24'$
$T = 37.83'$	$T = 60.43'$	$T = 34.49'$	$T = 46.62'$
$R = 235.46'$	$R = 419.24'$	$R = 125.00'$	$R = 100.00'$
		$SE = 0.02$	$SE = 0.02$
		$RO = SEE PLANS$	$RO = SEE PLANS$



5/14/99