

STATE OF NORTH CAROLINA
DIVISION OF HIGHWAYS

STATE PROJECT REFERENCE NO.	SHEET NO.
B - 3 3 7 7	TCP-1

**PLAN FOR PROPOSED
TRAFFIC CONTROL, MARKING & DELINEATION
WATAUGA COUNTY**

B - 3377

ROADWAY STANDARD DRAWINGS

THE FOLLOWING ROADWAY STANDARDS AS APPEAR IN "ROADWAY STANDARD DRAWINGS"- ROADWAY DESIGN UNIT-N.C. DEPARTMENT OF TRANSPORTATION-RALEIGH, N.C., DATED JULY 2006 ARE APPLICABLE TO THIS PROJECT AND BY REFERENCE HEREBY ARE CONSIDERED A PART OF THESE PLANS:

STD. NO.	TITLE
1101.03	TEMPORARY ROAD CLOSURES
1101.05	WORK ZONE VEHICLE ACCESSES
1101.11	TRAFFIC CONTROL DESIGN TABLES
1110.01	STATIONARY WORK ZONE SIGNS
1130.01	DRUMS
1145.01	BARRICADES
1180.01	SKINNY DRUMS
1205.01	PAVEMENT MARKINGS - LINE TYPES & OFFSETS
1205.02	PAVEMENT MARKINGS - 2 LANE & MULTILANE ROADWAYS
1261.01	GUARDRAIL & BARRIER DELINEATOR SPACING
1261.02	GUARDRAIL & BARRIER DELINEATOR TYPES
1262.01	GUARDRAIL END DELINEATION

INDEX OF SHEETS

SHEET NO.	TITLE
TCP-1	LIST OF APPLICABLE ROADWAY STANDARD DRAWINGS, LEGEND, INDEX OF SHEETS AND PAVEMENT MARKING SCHEDULE, GENERAL NOTES
TCP-2	DETOUR ROUTE AND PHASING
TCP-3	DETOUR SIGN DETAIL

PAVEMENT MARKING SCHEDULE

Pavement Marking Schedule				
SYMBOL	DESCRIPTION	PAY ITEM	QUANTITY BREAKDOWN	TOTAL QUANTITY
	FINAL PAVEMENT MARKINGS	PAINT (4")		5280 LF
PA	WHITE EDGELINE		2640 LF	
PI	YELLOW DOUBLE CENTER		2640 LF	

GENERAL NOTES

CHANGES MAY BE REQUIRED WHEN PHYSICAL DIMENSIONS IN THE DETAIL DRAWINGS, STANDARD DETAILS AND ROADWAY DETAILS ARE NOT ATTAINABLE TO MEET FIELD CONDITIONS, OR RESULT IN DUPLICATE, OR UNDESIRED OVERLAPPING OF DEVICES. MODIFICATION MAY INCLUDE: MOVING, SUPPLEMENTING, COVERING, OF REMOVAL OF DEVICES, AS DIRECTED BY THE ENGINEER.

THE FOLLOWING GENERAL NOTES APPLY AT ALL TIMES FOR THE DURATION OF THE CONSTRUCTION PROJECT EXCEPT WHEN OTHERWISE NOTED IN THE PLAN OR AS DIRECTED BY THE ENGINEER.

PAVEMENT EDGE DROP OFF REQUIREMENTS

A) BACKFILL AT A 6:1 SLOPE UP TO THE EDGE AND ELEVATION OF EXISTING PAVEMENT IN AREAS ADJACENT TO AN OPENED TRAVEL LANE THAT HAS A DROP-OFF AS FOLLOWS:

BACKFILL DROP-OFFS THAT EXCEED 2 INCHES ON ROADWAYS WITH POSTED SPEED LIMITS OF 45 MPH OR GREATER.

BACKFILL DROP-OFFS THAT EXCEED 3 INCHES ON ROADWAYS WITH POSTED SPEED LIMITS LESS THAN 45 MPH.

BACKFILL WITH SUITABLE COMPACTED MATERIAL, AS APPROVED BY THE ENGINEER, AT NO EXPENSE TO THE DEPARTMENT

B) DO NOT EXCEED A DIFFERENCE OF 2 INCHES IN ELEVATION BETWEEN OPEN LANES OF TRAFFIC FOR NOMINAL LIFTS OF 1.5 INCHES. INSTALL ADVANCE WARNING "UNEVEN LANES" SIGNS (W8-11) (200 FT) IN ADVANCE AND A MINIMUM OF ONCE EVERY HALF MILE THROUGHOUT THE UNEVEN AREA.

TRAFFIC PATTERN ALTERATIONS

C) NOTIFY THE ENGINEER TWENTY ONE (21) CALENDAR DAYS PRIOR TO ANY TRAFFIC PATTERN ALTERATION.

SIGNING

D) PROVIDE PERMANENT SIGNING.

E) PROVIDE DETOUR SIGNING WITHIN AND OFF THE PROJECT LIMITS.

F) COVER OR REMOVE ALL DETOUR SIGNS WITHIN AND OFF THE PROJECT LIMITS WHEN A DETOUR IS NOT IN OPERATION.

G) ENSURE ALL NECESSARY SIGNING IS IN PLACE PRIOR TO ALTERING ANY TRAFFIC PATTERN.

TRAFFIC CONTROL DEVICES

H) SPACE CHANNELIZING DEVICES IN WORK AREAS NO GREATER THAN TWICE THE POSTED SPEED LIMIT (MPH), EXCEPT 10 FT. ON-CENTER IN RADII, AND 3 FT. OFF THE EDGE OF AN OPEN TRAVELWAY, WHEN LANE CLOSURES ARE NOT IN EFFECT. WHEN SKINNY DRUMS ARE ALLOWED REFER TO SECTION 1180 OF STANDARD SPECIFICATIONS FOR ROADS AND STRUCTURES OR AS SHOWN IN THE PLANS.

I) PLACE TYPE III BARRICADES WITH "ROAD CLOSED" SIGN R-11-2 ATTACHED OF SUFFICIENT LENGTH TO CLOSE ENTIRE ROADWAY.

PAVEMENT MARKINGS AND MARKERS

J) INSTALL PAVEMENT MARKINGS ON THE FINAL SURFACE AS FOLLOWS:

ROAD NAME	MARKING	MARKER
1. ALL ROADS	PAINT	NONE

K) PLACE TWO APPLICATIONS OF PAINT PAVEMENT MARKINGS ON THE FINAL WEARING SURFACE. PLACE THE SECOND APPLICATION OF PAINT UPON SUFFICIENT DRYING TIME OF THE FIRST.

L) TIE PROPOSED PAVEMENT MARKING LINES TO EXISTING PAVEMENT MARKING LINES.

LEGEND

TRAFFIC CONTROL DEVICES

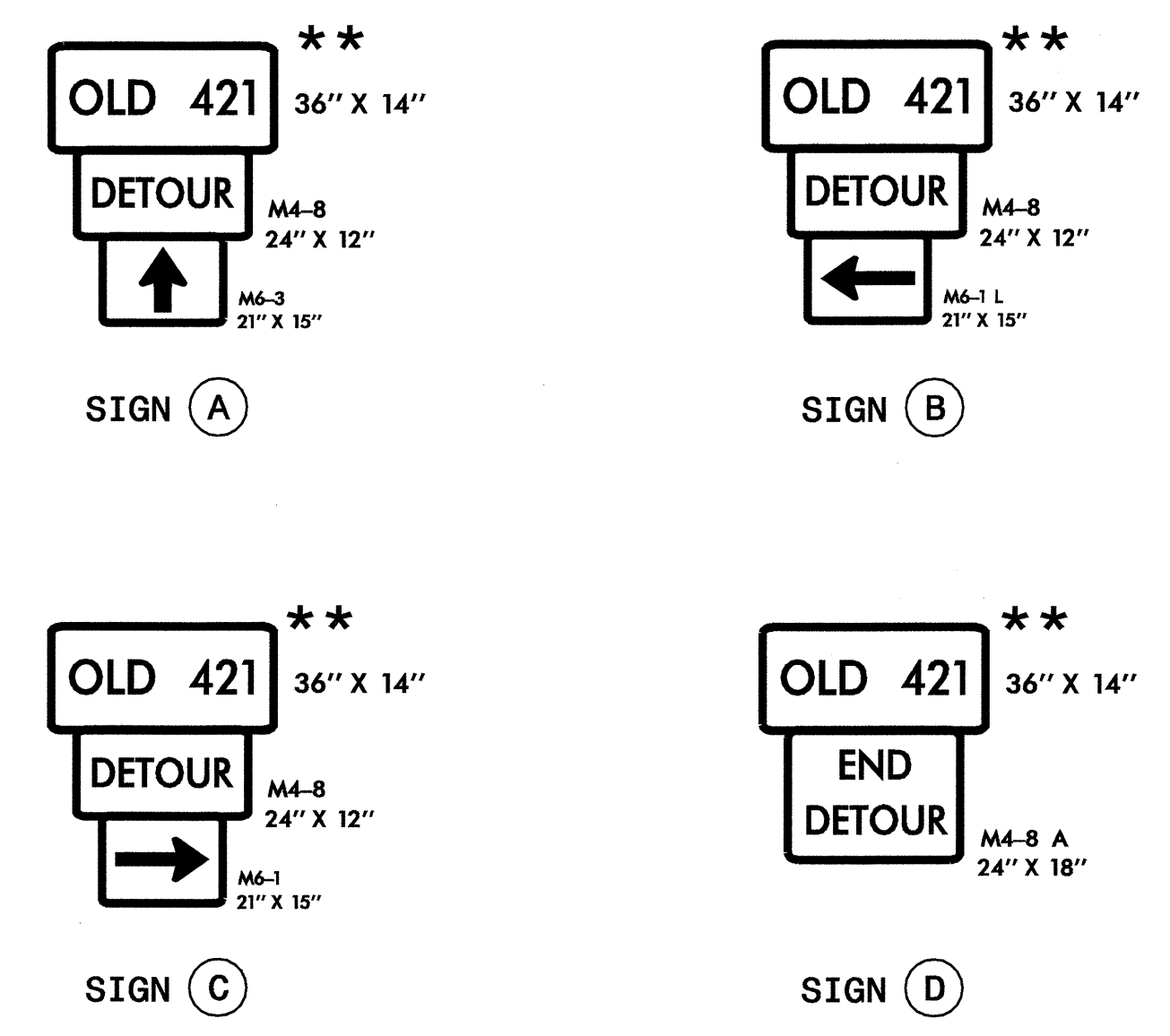
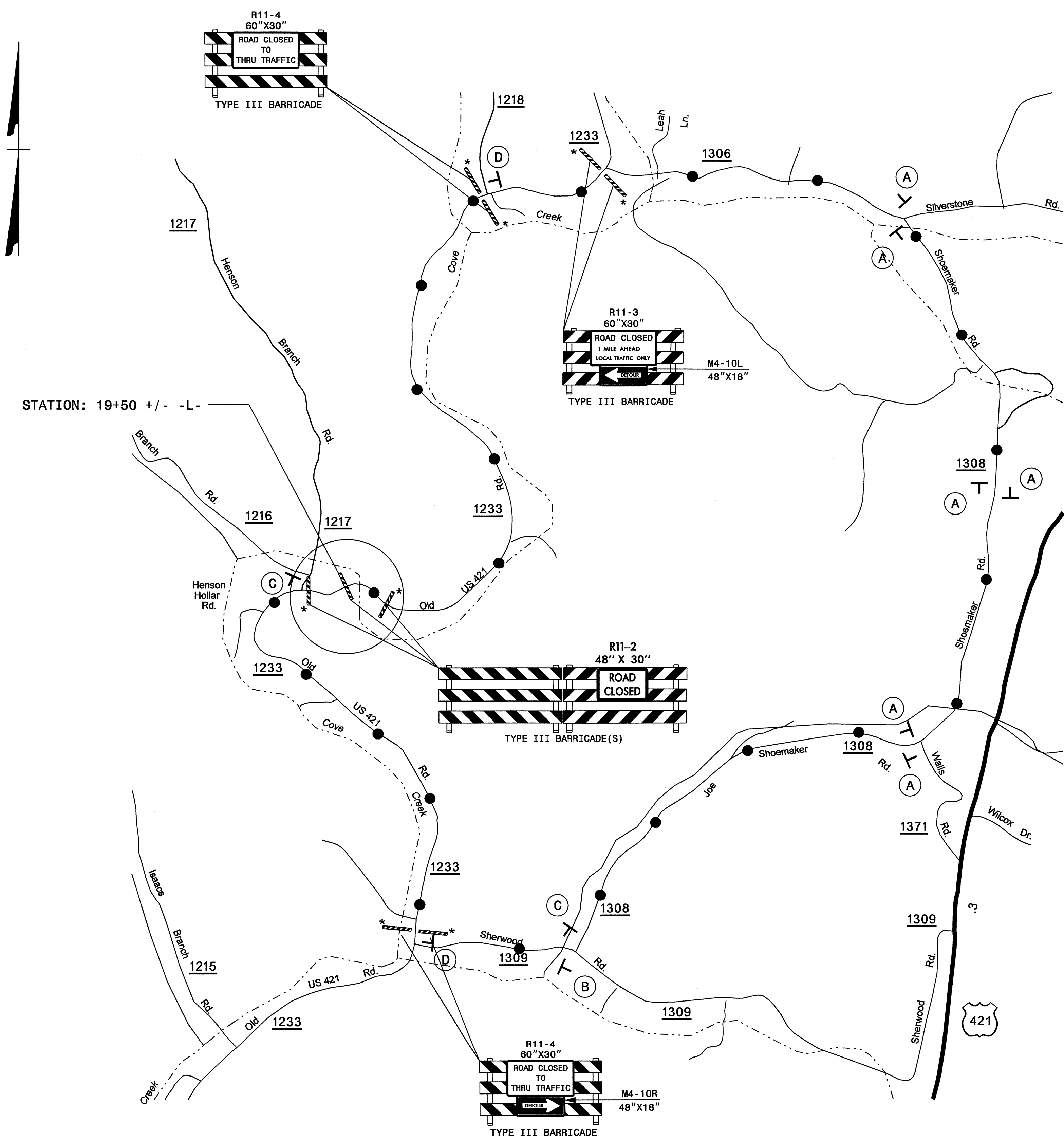
▬ TYPE III BARRICADE

├ STATIONARY SIGN

APPROVED: DATE:	PLAN PREPARED BY: N.C.D.O.T. TRAFFIC CONTROL, MARKING & DELINEATION UNIT
SEAL	J. S. BOURNE, P.E. TRAFFIC CONTROL ENGINEER
	G. L. GETTIER, P.E. TRAFFIC CONTROL PROJECT ENGINEER
	J. W. GILSTRAP TRAFFIC CONTROL PROJECT DESIGN ENGINEER
	S. GREEN TRAFFIC CONTROL DESIGN ENGINEER

03-SEP-2008 09:51
\\dot\dfsroot\pco\highproj\projects\b3377\traffic\tr\affico\tr\top\b3377_t-top-l.dgn
singreen AT 12/24/13

TIP PROJECT:



- NOTES
- ALL DETOUR SIGN LOCATIONS ARE APPROXIMATE.
 - ALL DETOUR SIGNS ARE BLACK ON ORANGE UNLESS OTHERWISE NOTED.
 - ALL WARNING SIGN LOCATIONS ARE APPROXIMATE.
 - * SEE ROADWAY STANDARD DRAWING NO. 1101.03, SHEET 1 OF 9, FOR ADDITIONAL WORK ZONE SIGNS AND LOCATIONS ON SR 1233 (OLD 421 -L-).
 - ** SEE TCP-3 FOR SIGN DESIGN.

PHASING

- STEP 1: - INSTALL OFF-SITE DETOUR ROUTE SIGN ASSEMBLIES FOR THE CLOSING OF SR 1233 (OLD 421, -L-).
- USING ROADWAY STANDARD DRAWING NO. 1101.03, SHEET 1 OF 9, CLOSE SR 1233 (OLD 421, -L-) TO THRU TRAFFIC.
- NOTE: INSTALL TYPE III BARRICADES AT STATION 19+50 +/- -L- AND UTILIZE DRUMS TO MAINTAIN ACCESS TO DRIVEWAYS.
- STEP 2: - REMOVE THE EXISTING STRUCTURE AND CONSTRUCT THE PROPOSED STRUCTURE AND ROADWAY UP TO AND INCLUDING THE FINAL LAYER OF SURFACE COURSE AND PLACE FINAL PAVEMENT MARKINGS (PAINT) ON SR 1233 (OLD 421, -L-) FROM STATION 15+90 +/- -L- TO STATION 22+49 +/- -L-. SEE CONSTRUCTION PLANS.
- STEP 3: - REMOVE ALL TRAFFIC CONTROL DEVICES, SIGNING AND DETOUR ROUTE SIGNING.
- OPEN TO FINAL TRAFFIC PATTERN.

03-SEP-2008 09:51
 \\dot\dfs\root\01\proj\9\1\proj\projects-b\3377\traffic\control\tcp\b3377_tcp-tcp-2.dgn
 snglben AT 12:12:47:23

APPROVED: _____ DATE: _____	DETOUR ROUTE AND PHASING									
SCALE: NONE	DATE: 08/08	<table border="1"> <thead> <tr> <th colspan="2">REVISIONS</th> </tr> <tr> <th>NO.</th> <th>DESCRIPTION</th> </tr> </thead> <tbody> <tr> <td> </td> <td> </td> </tr> <tr> <td> </td> <td> </td> </tr> </tbody> </table>	REVISIONS		NO.	DESCRIPTION				
REVISIONS										
NO.	DESCRIPTION									
DWG. BY: SNG	DESIGN BY: SNG									
REVIEWED BY: JWG										

