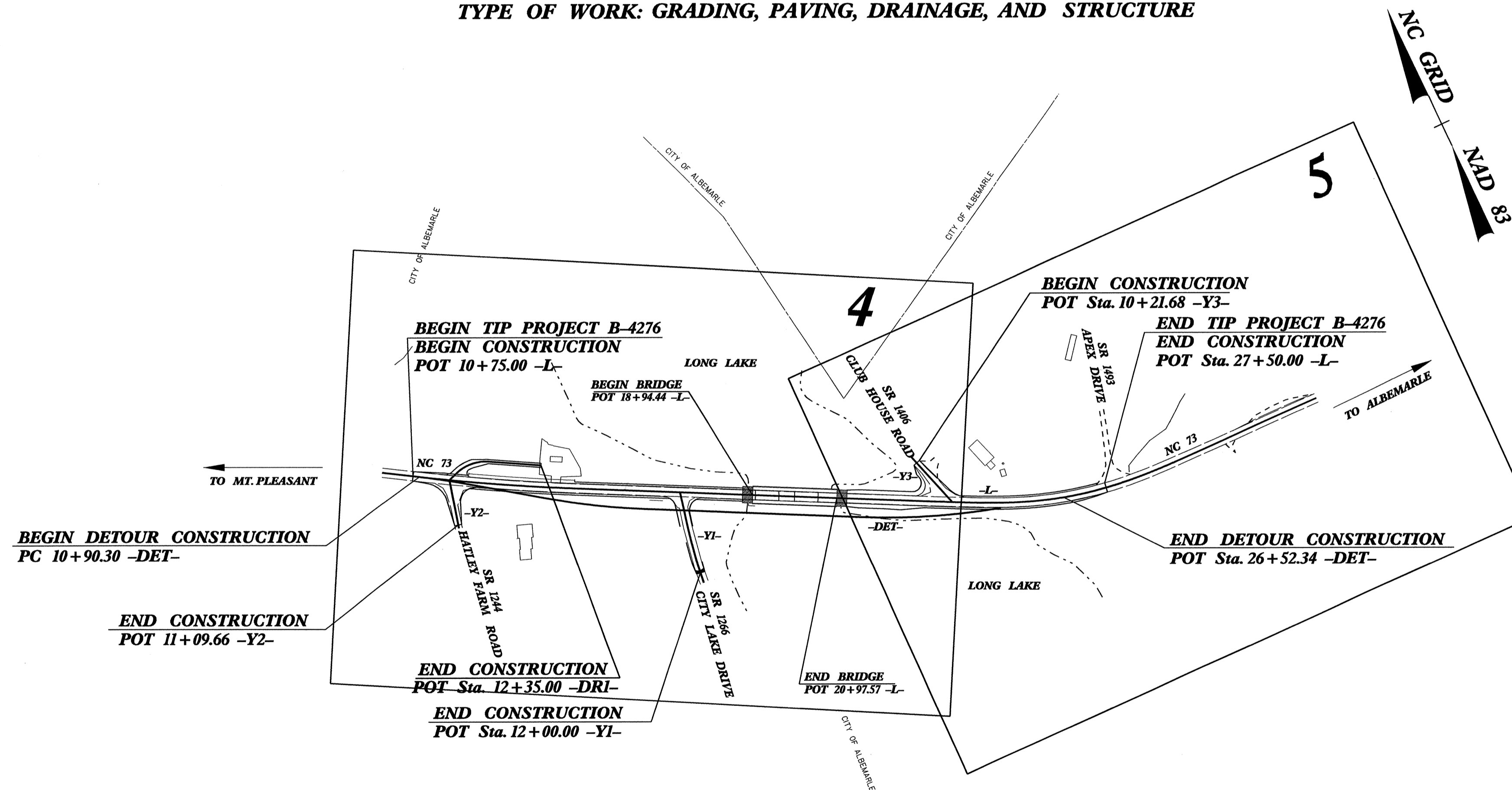


TIP PROJECT: B-4276

STATE OF NORTH CAROLINA
 DIVISION OF HIGHWAYS
 PLAN FOR PROPOSED
 HIGHWAY EROSION CONTROL
STANLY COUNTY

LOCATION: BRIDGE NO.33 OVER LONG CREEK ON NC 73

TYPE OF WORK: GRADING, PAVING, DRAINAGE, AND STRUCTURE

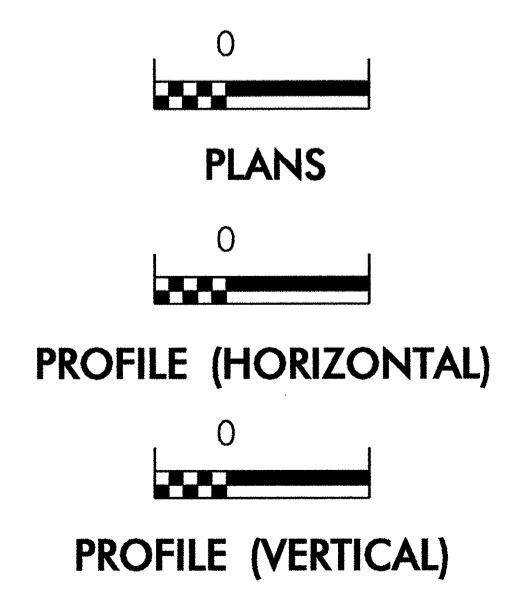


EROSION AND SEDIMENT CONTROL MEASURES

Sed. #	Description	Symbol
1630.03	Temporary Silt Ditch	TD
1630.05	Temporary Diversion	TD
1605.01	Temporary Silt Fence	III III III
1606.01	Special Sediment Control Fence	III III III
1622.01	Temporary Berms and Slope Drains	— T —
1630.01	Riser Basin	⊙
	Silt Basin Type B	▨
1633.01	Temporary Rock Silt Check Type-A	▨
	Temporary Rock Silt Check Type-B	▶
	Wattle	⌒
1634.01	Temporary Rock Sediment Dam Type-A	▨
1634.02	Temporary Rock Sediment Dam Type-B	⊙
1635.01	Rock Pipe Inlet Sediment Trap Type-A	⊙
1635.02	Rock Pipe Inlet Sediment Trap Type-B	⊙
1630.04	Stilling Basin	▭
1630.06	Special Stilling Basin	▭
	Rock Inlet Sediment Trap:	
1632.01	Type A	A
1632.02	Type B	B
1632.03	Type C	C
	Skimmer Basin	▭
	Tiered Skimmer Basin	▭
	Infiltration Basin	▭

**THIS PROJECT CONTAINS
 EROSION CONTROL PLANS
 FOR CLEARING AND
 GRUBBING PHASE OF
 CONSTRUCTION.**

GRAPHIC SCALE



ROADSIDE ENVIRONMENTAL UNIT
 DIVISION OF HIGHWAYS
 STATE OF NORTH CAROLINA

Prepared In the Office of:
ROADSIDE ENVIRONMENTAL UNIT
 1 South Wilmington St.
 Raleigh, NC 27611
2006 STANDARD SPECIFICATIONS

Roadway Standard Drawings

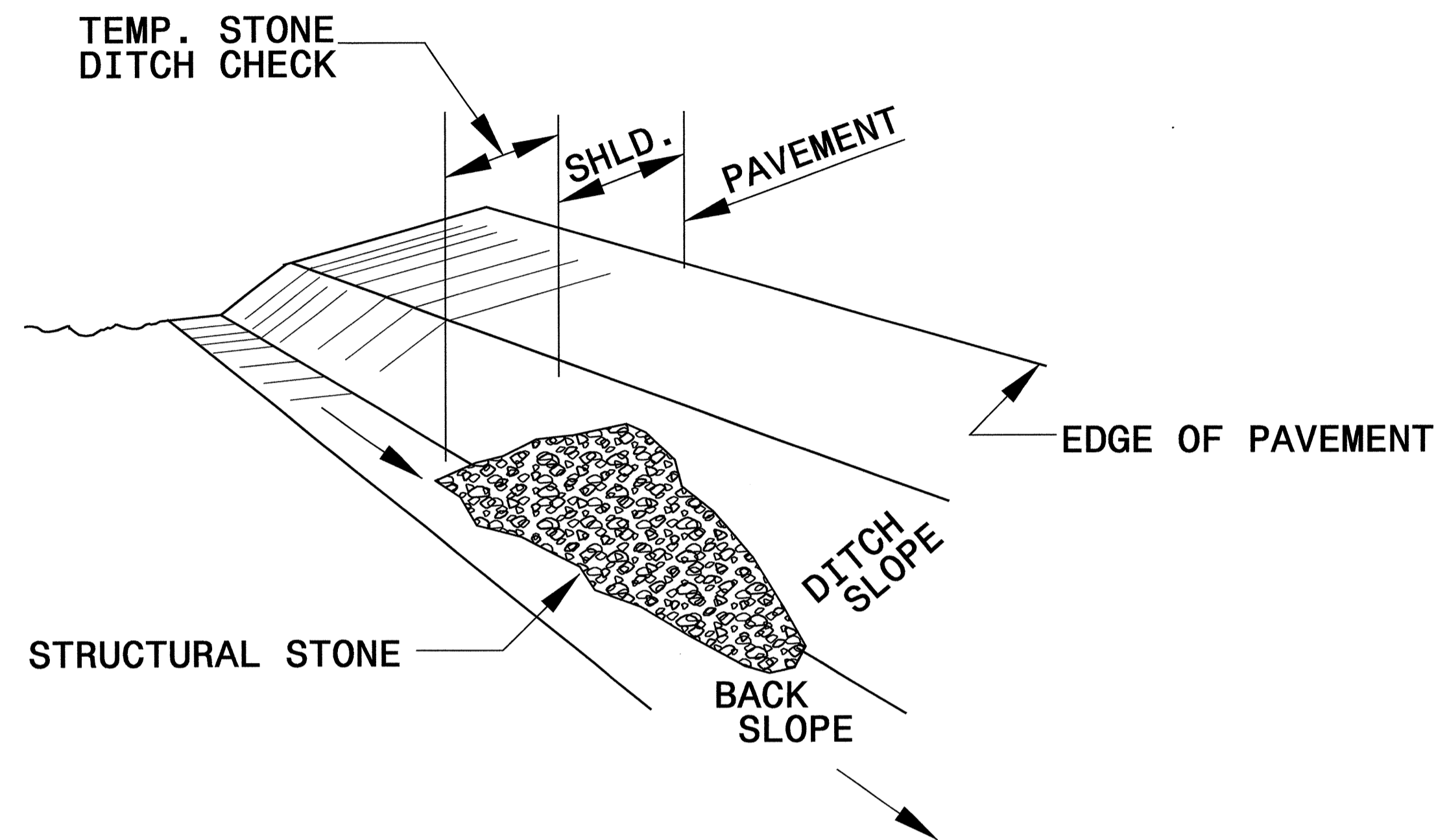
The following roadway english standards as appear in "Roadway Standard Drawings"- Roadway Design Unit - N. C. Department of Transportation - Raleigh, N. C., dated July 18, 2006 and the latest revision thereto are applicable to this project and by reference hereby are considered a part of these plans.

1605.01 Temporary Silt Fence	1630.06 Special Stilling Basin
1606.01 Special Sediment Control Fence	1632.01 Rock Inlet Sediment Trap Type A
1607.01 Gravel Construction Entrance	1632.03 Rock Inlet Sediment Trap Type C
1622.01 Temporary Berms and Slope Drains	1633.01 Temporary Rock Silt Check Type A
1630.05 Temporary Diversion	1634.01 Temporary Rock Sediment Dam Type B
	1635.02 Rock Pipe Inlet Sediment Trap Type B

D:\projects\4276\08 1357\mgtaal\design\4276.ec.tsh.dwg
 11/15/06 11:52 AM
 11/15/06 11:52 AM

PROJECT REFERENCE NO. B-4276	SHEET NO. EC-2
RW SHEET NO.	
ROADWAY DESIGN ENGINEER	HYDRAULICS ENGINEER

TEMPORARY ROCK SILT CHECK TYPE 'B' DETAIL

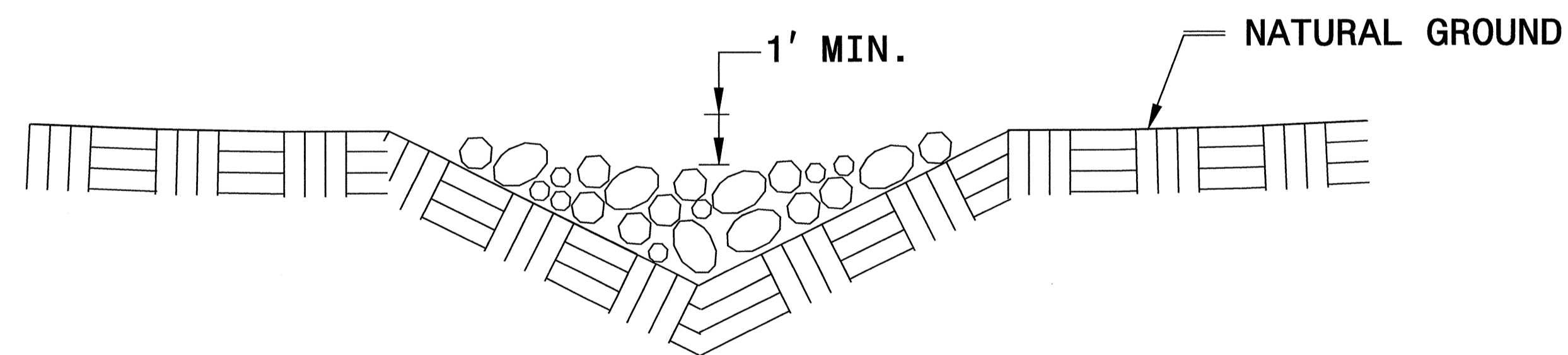


ISOMETRIC VIEW

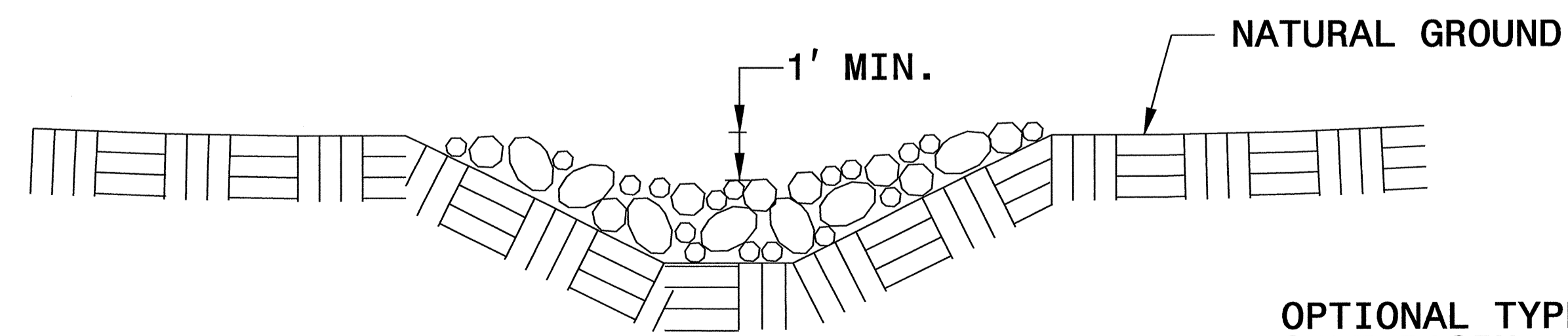
NOTES:

USE CLASS 'B' EROSION CONTROL STONE FOR STRUCTURAL STONE.

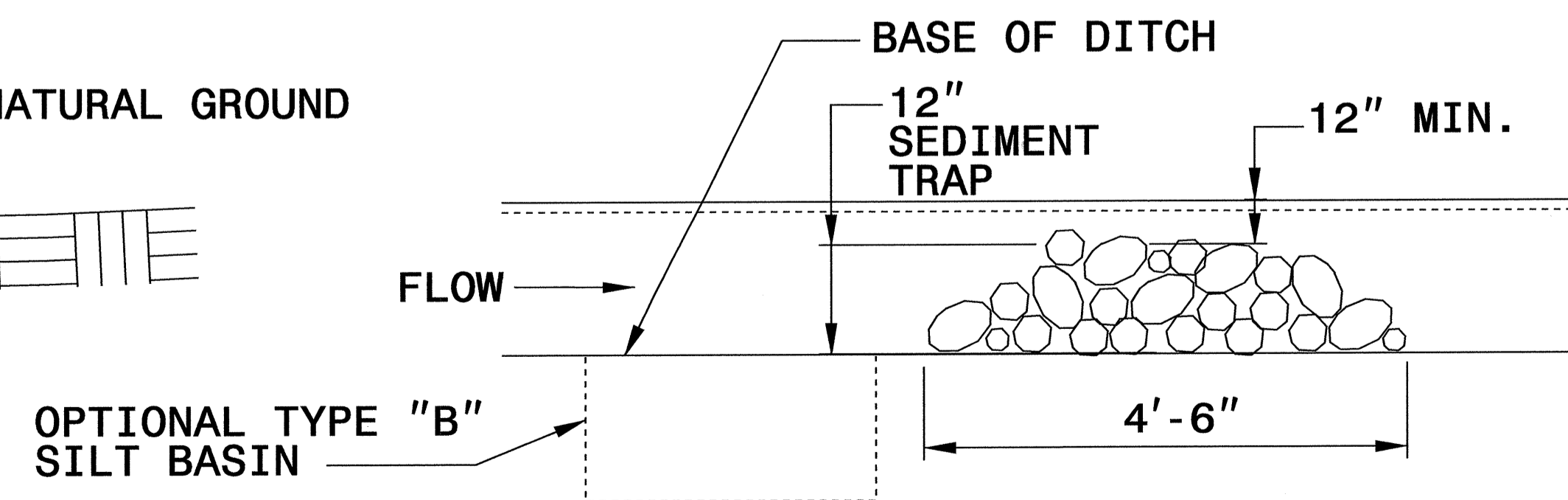
THE ENGINEER MAY DIRECT THE OPTION OF CLASS "A" STONE FOR SITES HAVING LESS THAN ONE (1) ACRE DRAINAGE AREA AND A DITCH GRADE LESS THAN 3%.



**CROSS SECTION
VEE DITCH**



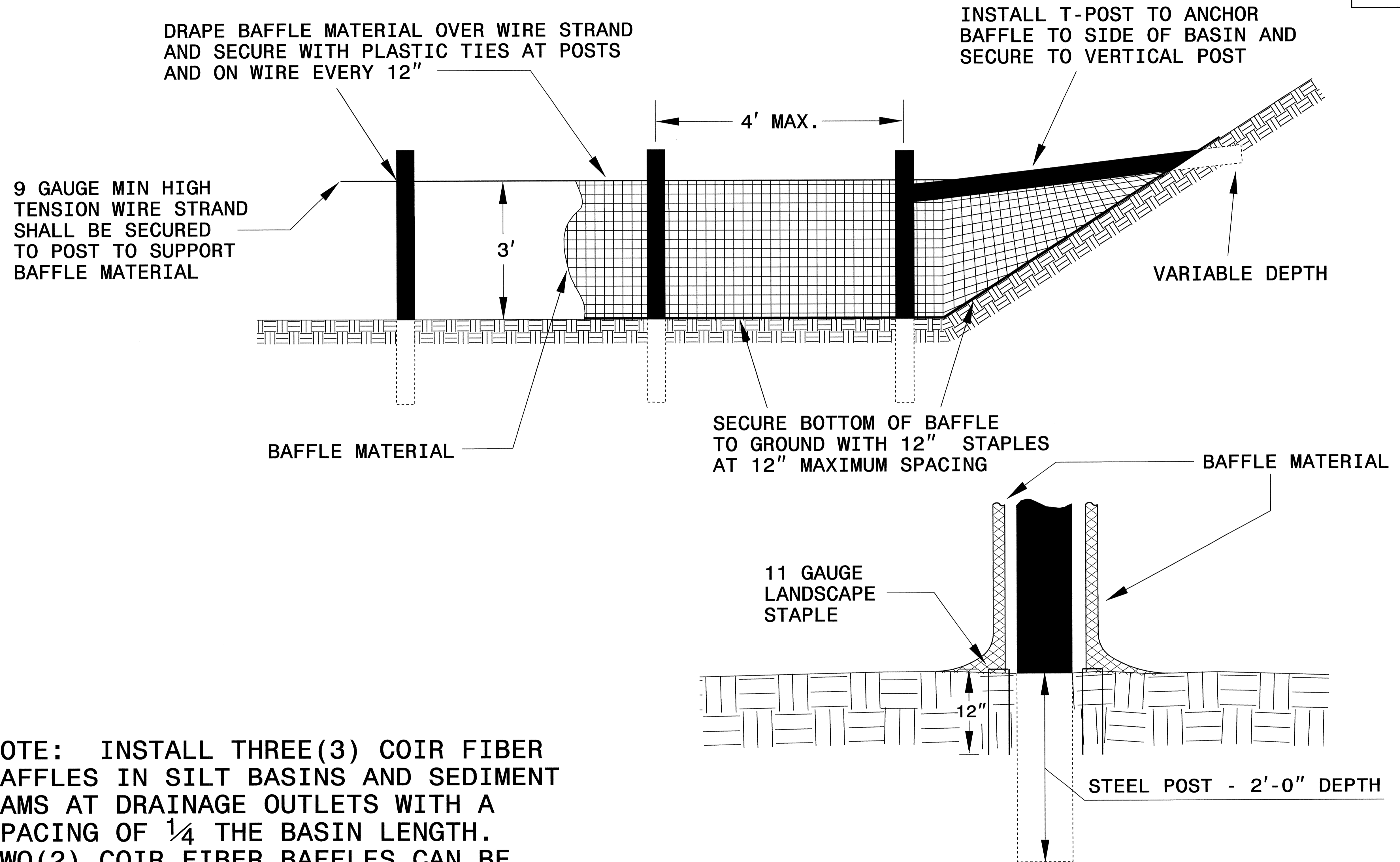
**CROSS SECTION
TRAPEZOIDAL DITCH**



ELEVATION VIEW

PROJECT REFERENCE NO. B-4276	SHEET NO. EC-2A
RW SHEET NO.	
ROADWAY DESIGN ENGINEER	HYDRAULICS ENGINEER

COIR FIBER BAFFLE DETAIL

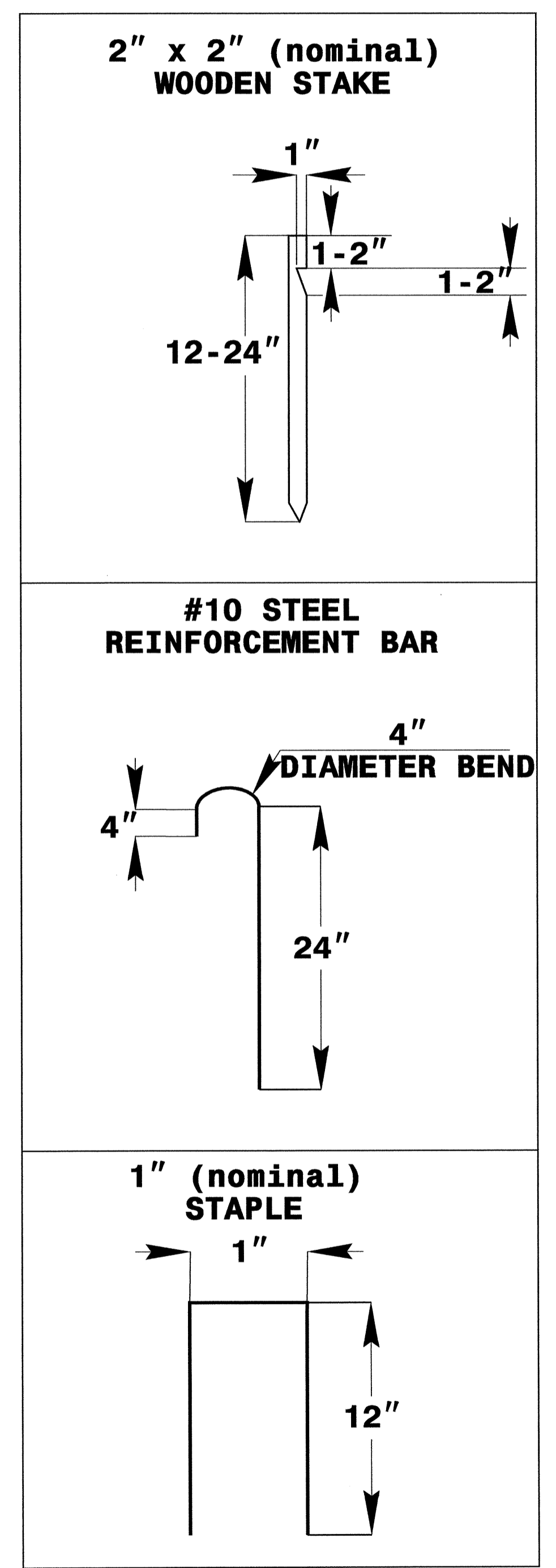
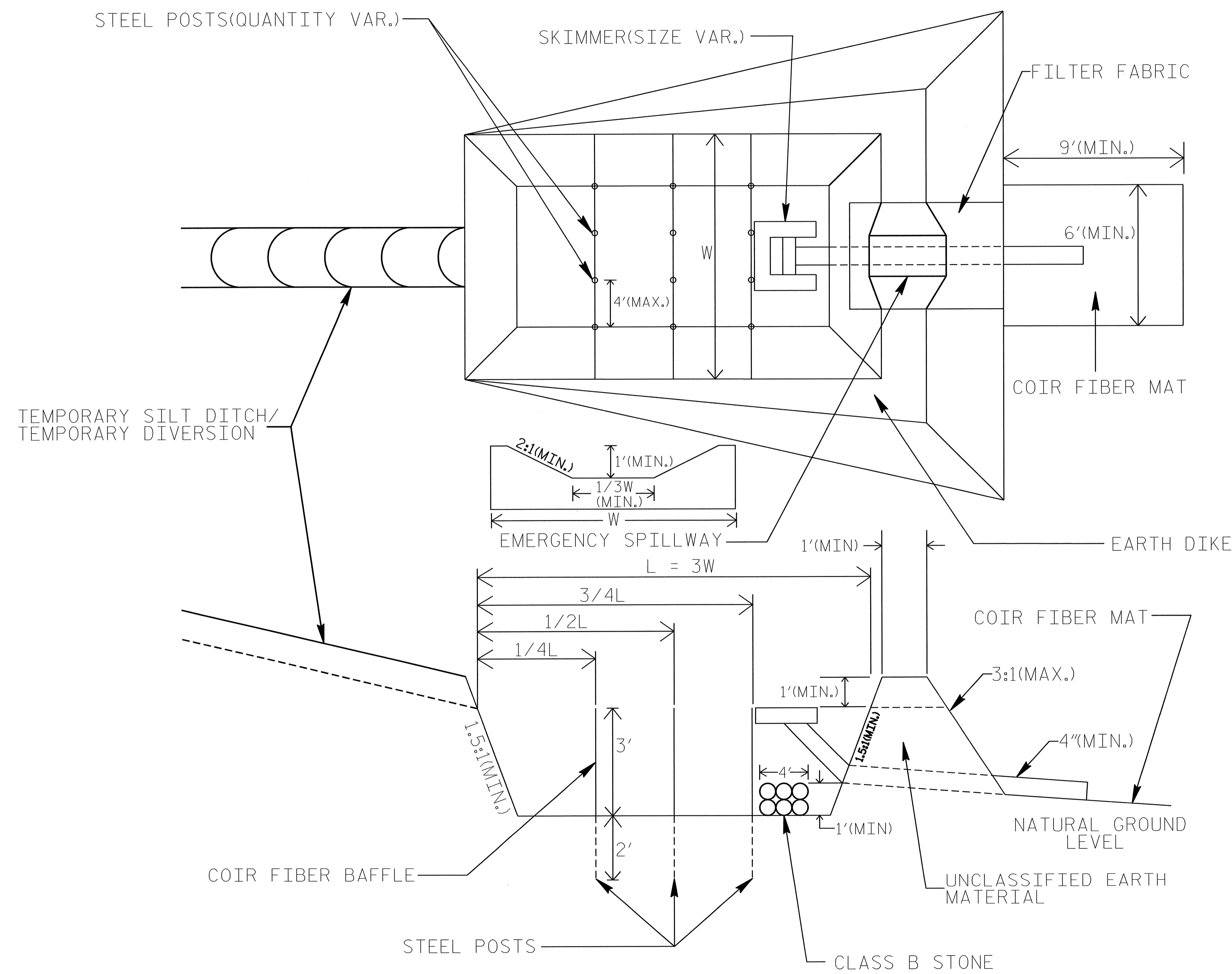


NOTE: INSTALL THREE(3) COIR FIBER BAFFLES IN SILT BASINS AND SEDIMENT DAMS AT DRAINAGE OUTLETS WITH A SPACING OF $\frac{1}{4}$ THE BASIN LENGTH. TWO(2) COIR FIBER BAFFLES CAN BE INSTALLED IN SILT BASINS AND DAMS LESS THAN 20 FT. IN LENGTH WITH A SPACING OF $\frac{1}{3}$ THE BASIN LENGTH.

BAFFLE MATERIAL SHALL BE SECURED TO THE BOTTOM AND SIDES OF BASIN USING 12" LANDSCAPE STAPLES

SKIMMER BASIN WITH BAFFLES DETAIL

PROJECT REFERENCE NO. B-4276	SHEET NO. EC-2B
RW SHEET NO.	
ROADWAY DESIGN ENGINEER	HYDRAULICS ENGINEER



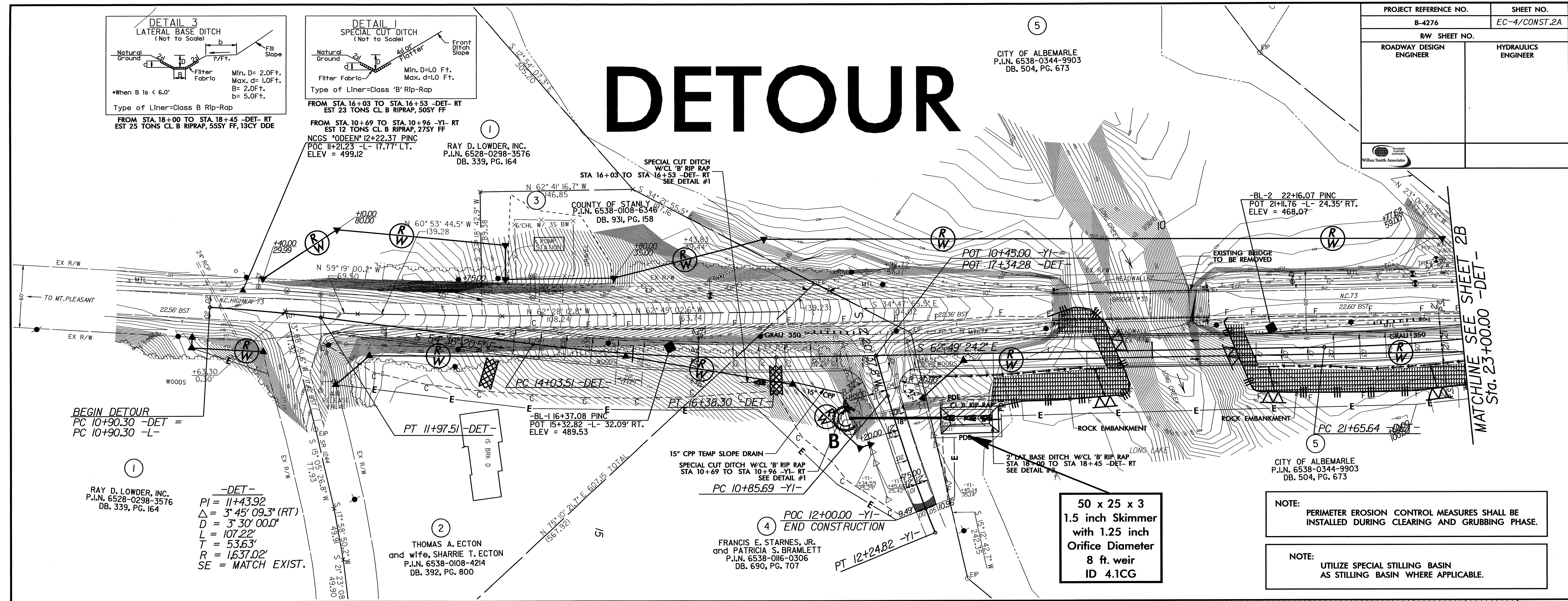
COIR FIBER MAT ANCHOR OPTIONS

- NOTES:**
1. SEED AND PLACE MATTING FOR EROSION CONTROL ON SIDESLOPES.
 2. LIMIT EARTH DIKE HEIGHT TO 5 FT.

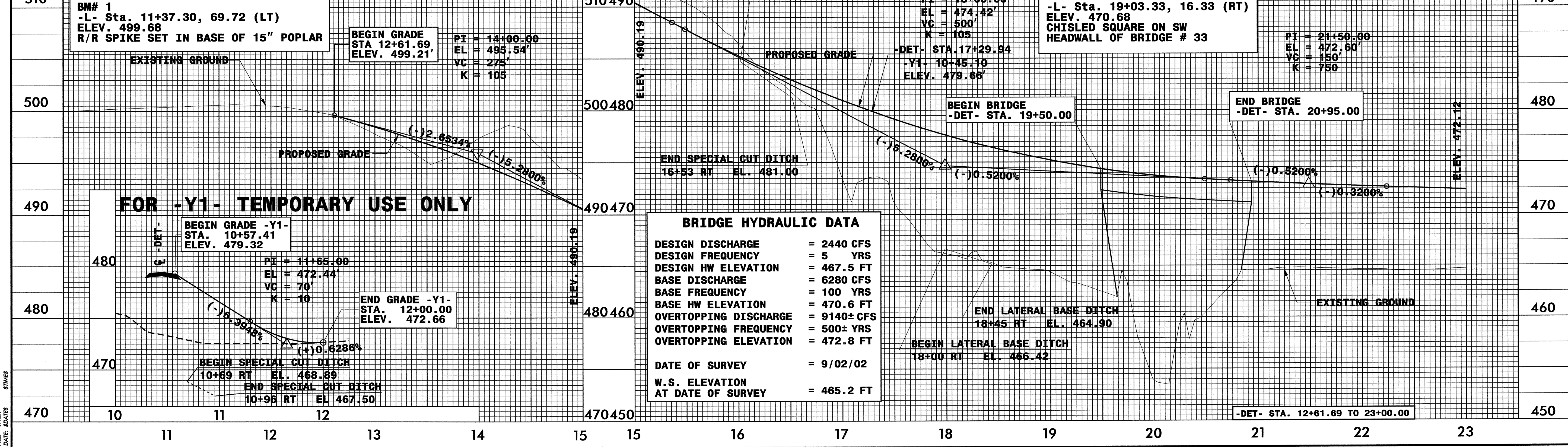
PROJECT REFERENCE NO.	SHEET NO.
B-4276	EC-4/CONST.2A
RW SHEET NO.	
ROADWAY DESIGN ENGINEER	HYDRAULICS ENGINEER

DETOUR

CITY OF ALBEMARLE
P.I.N. 6538-0344-9903
DB. 504, PG. 673

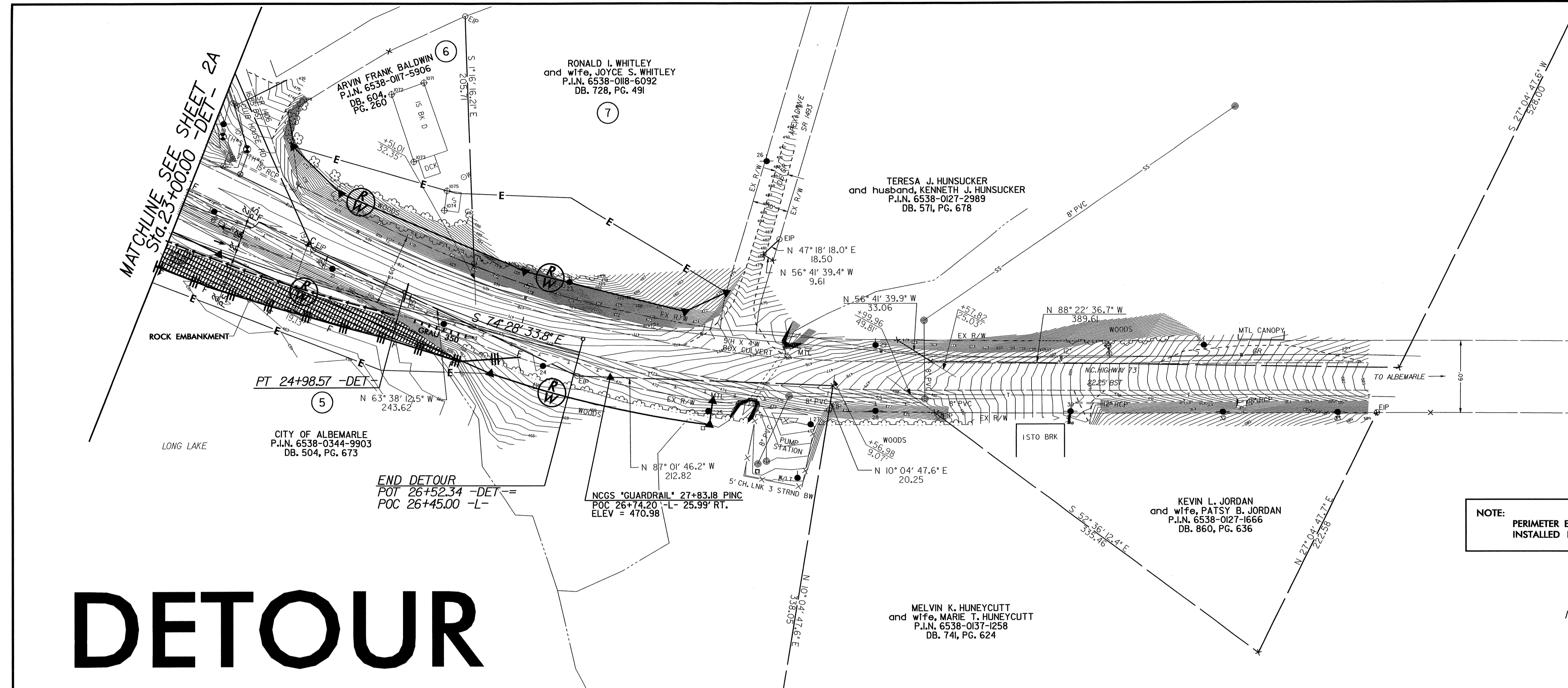


FOR DETOUR USE ONLY



FILE: SFILES
DATE: 02/03/03

PROJECT REFERENCE NO.	SHEET NO.
B-4276	EC-5/CONST.2B
RW SHEET NO.	
ROADWAY DESIGN ENGINEER	HYDRAULICS ENGINEER

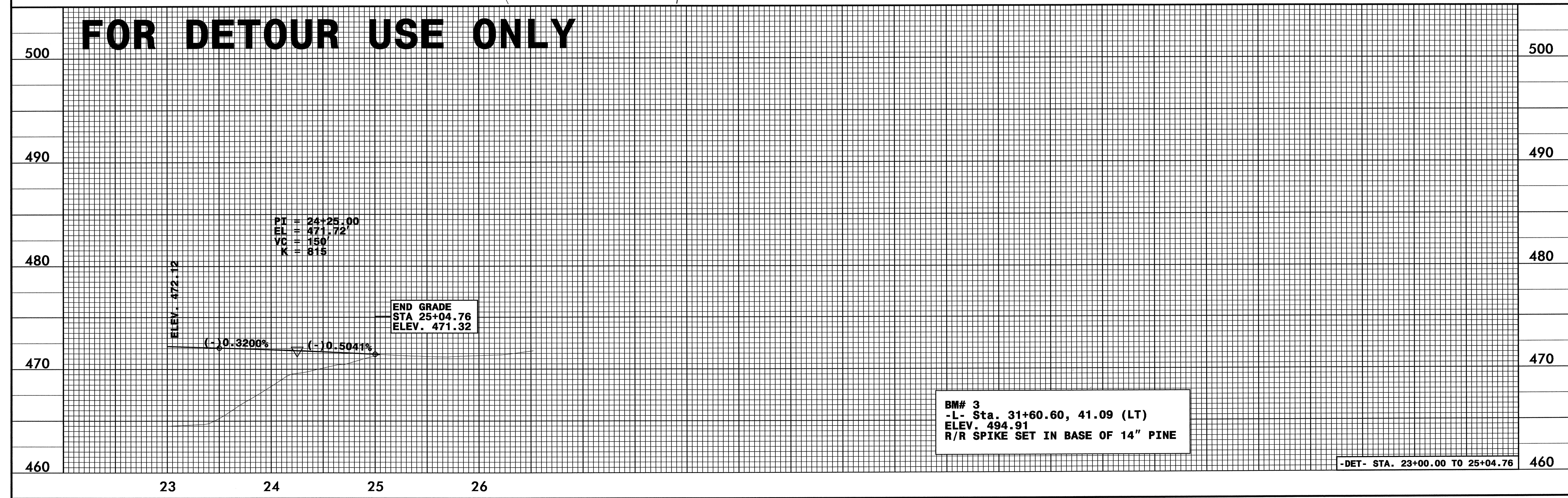


NOTE:
PERIMETER EROSION CONTROL MEASURES SHALL BE INSTALLED DURING CLEARING AND GRUBBING PHASE.

NOTES
FOR CROSS SECTIONS OF:
1. DETOUR
SEE SHEET:
X-13 THRU X-14

DETOUR

FOR DETOUR USE ONLY



-DET- STA. 23+00.00 TO 25+04.76 460

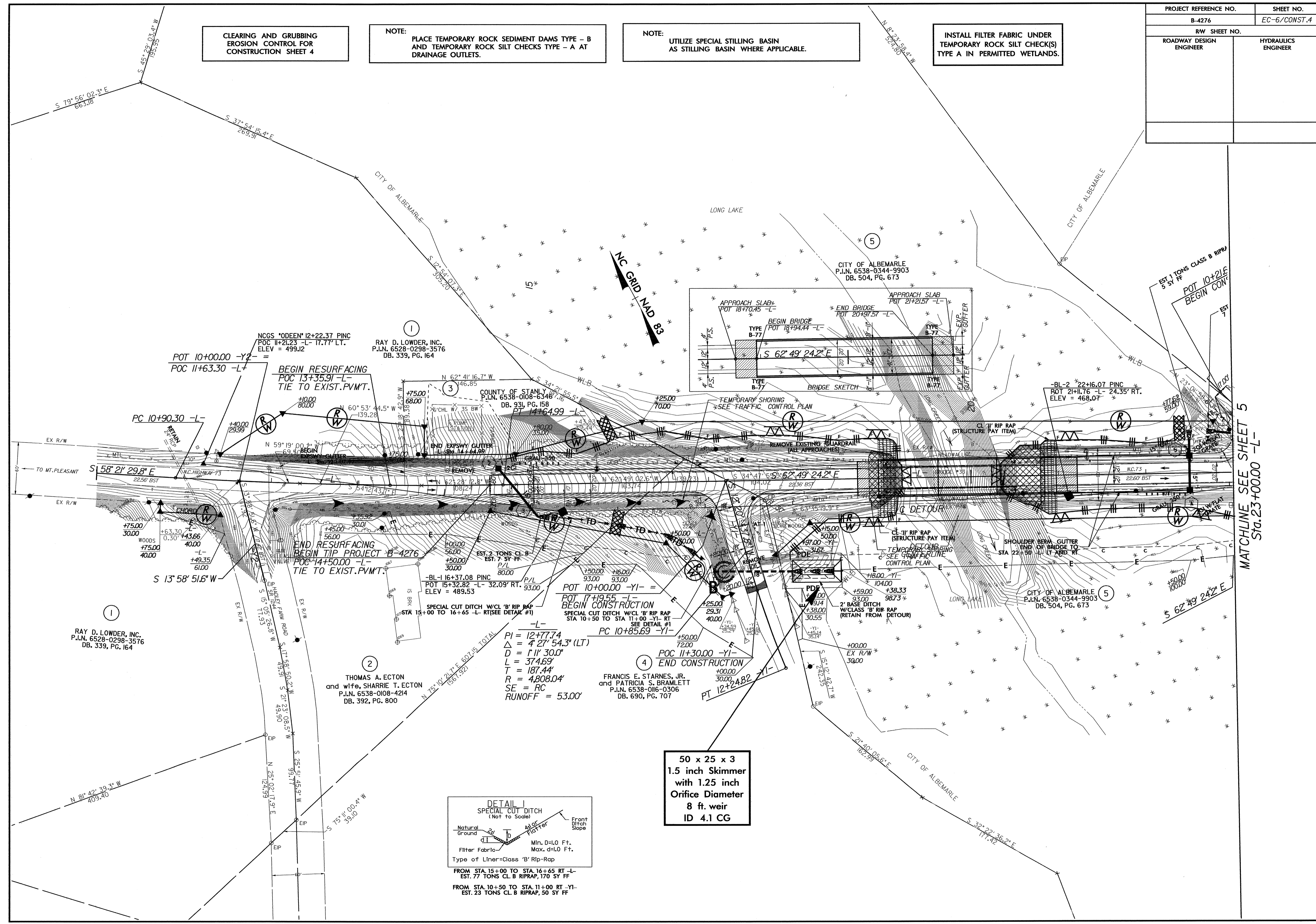
PROJECT REFERENCE NO.	SHEET NO.
B-4276	EC-6/CONST.4
RW SHEET NO.	
ROADWAY DESIGN ENGINEER	HYDRAULICS ENGINEER

CLEARING AND GRUBBING
EROSION CONTROL FOR
CONSTRUCTION SHEET 4

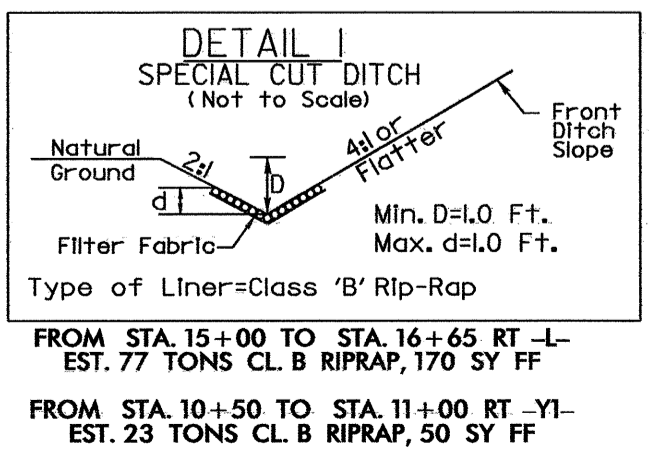
NOTE:
PLACE TEMPORARY ROCK SEDIMENT DAMS TYPE - B
AND TEMPORARY ROCK SILT CHECKS TYPE - A AT
DRAINAGE OUTLETS.

NOTE:
UTILIZE SPECIAL STILLING BASIN
AS STILLING BASIN WHERE APPLICABLE.

INSTALL FILTER FABRIC UNDER
TEMPORARY ROCK SILT CHECK(S)
TYPE A IN PERMITTED WETLANDS.



MATCHLINE SEE SHEET 5
Sta. 23+00.00 -L-



50 x 25 x 3
1.5 inch Skimmer
with 1.25 inch
Orifice Diameter
8 ft. weir
ID 4.1 CG

RAY D. LOWDER, INC.
P.I.N. 6528-0298-3576
DB. 339, PG. 164

THOMAS A. ECTON
and wife, SHARRIE T. ECTON
P.I.N. 6538-0108-4214
DB. 392, PG. 800

FRANCIS E. STARNES, JR.
and PATRICIA S. BRAMLETT
P.I.N. 6538-0116-0306
DB. 690, PG. 707

PI = 12+77.74
Δ = 4° 27' 54.3" (LT)
D = 11' 30.0"
L = 374.69'
T = 187.44'
R = 4808.04'
SE = RC
RUNOFF = 53.00'

NCGS "ODEEN" I2+22.37 PINC
POC II+21.23 -L- 17.77' LT.
ELEV = 499.12

BEGIN RESURFACING
POC 13+35.91 -L-
TIE TO EXIST. P.V.M.T.

POT 10+00.00 -YI- =
POC 11+63.30 -L-

RAY D. LOWDER, INC.
P.I.N. 6528-0298-3576
DB. 339, PG. 164

COUNTY OF STANLY
P.I.N. 6538-0108-6348
DB. 931, PG. 158


CITY OF ALBEMARLE
P.I.N. 6538-0344-9903
DB. 504, PG. 673

-BL-2 22+16.07 PINC
POT 21+11.76 -L- 24.35' RT.
ELEV = 468.07'

EST. 1 TONS CLASS B RIPRAP
5 SY FF

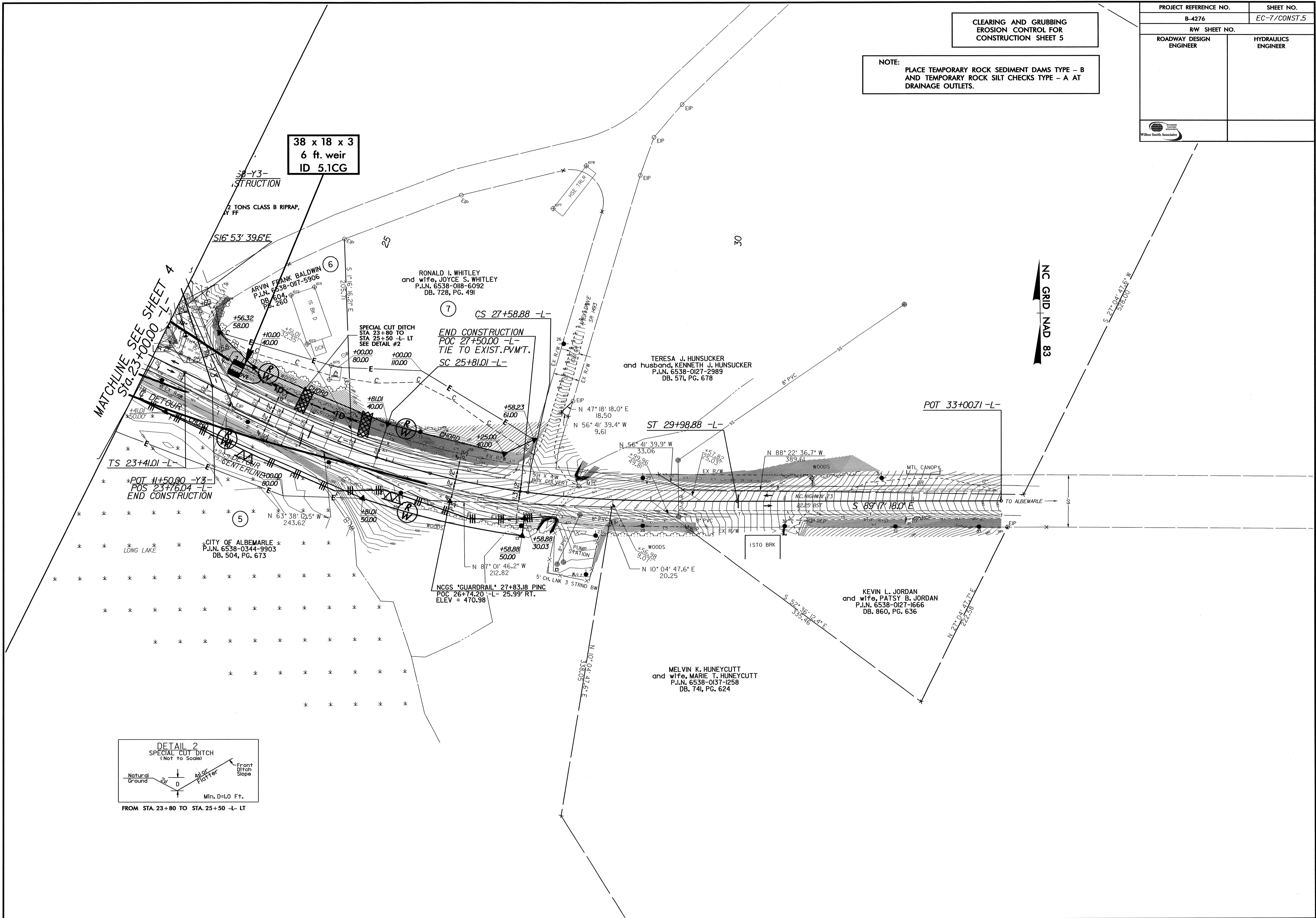
POT 10+21.6
BEGIN CONSTRUCTION

CITY OF ALBEMARLE
P.I.N. 6538-0344-9903
DB. 504, PG. 673

PROJECT REFERENCE NO.	SHEET NO.
B-4276	EC-7/CONST.5
RW SHEET NO.	
ROADWAY DESIGN ENGINEER	HYDRAULICS ENGINEER
	

CLEARING AND GRUBBING
EROSION CONTROL FOR
CONSTRUCTION SHEET 5

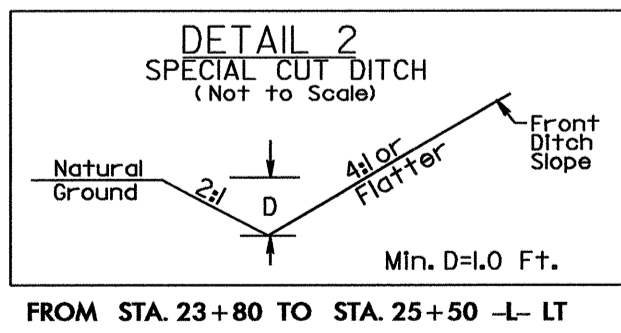
NOTE:
PLACE TEMPORARY ROCK SEDIMENT DAMS TYPE - B
AND TEMPORARY ROCK SILT CHECKS TYPE - A AT
DRAINAGE OUTLETS.



38 x 18 x 3
6 ft. weir
ID 5.1CG

MATCHLINE SEE SHEET 4
Sta. 23+00.00 -L-

NC GRID NAD 83

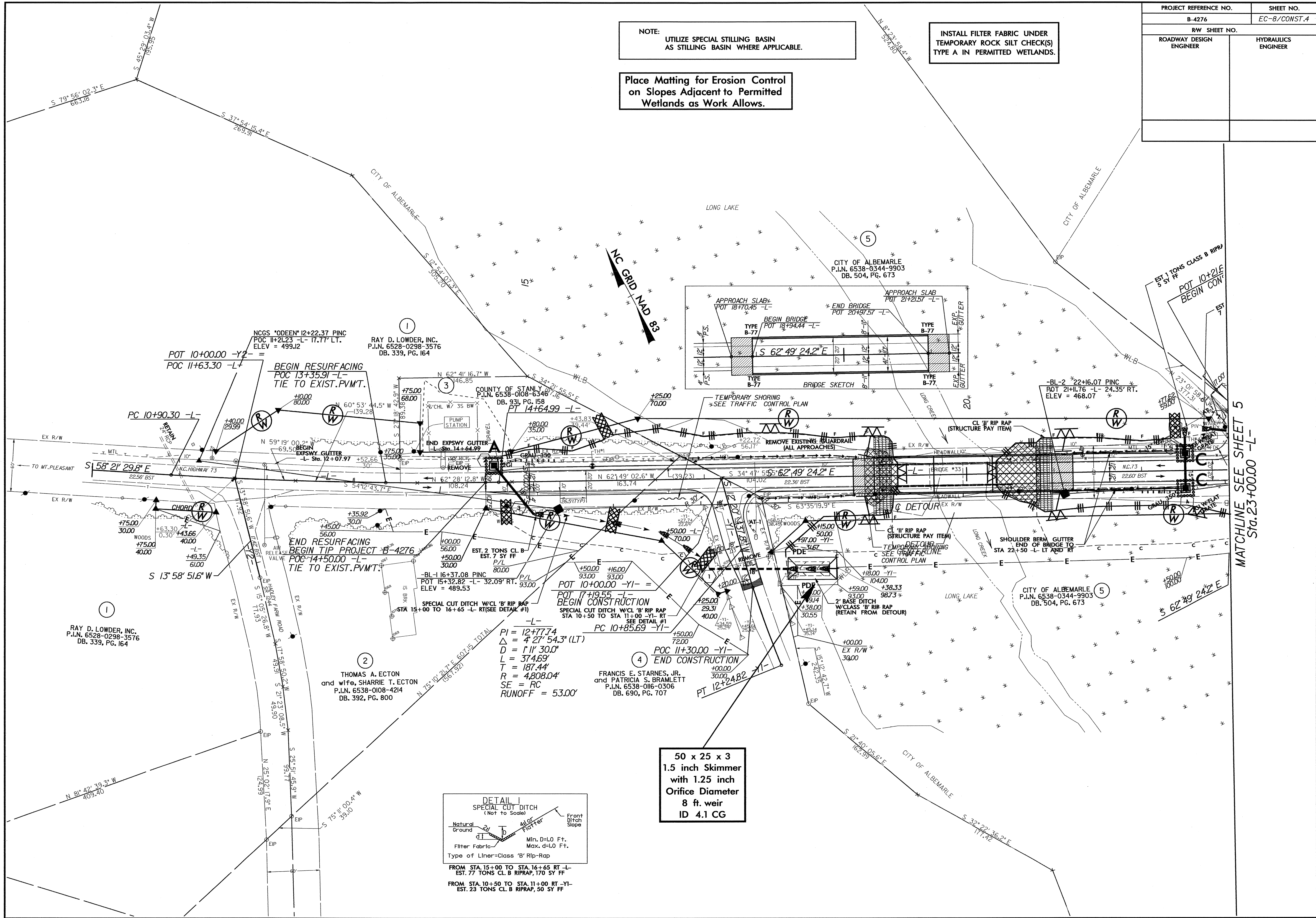


PROJECT REFERENCE NO.	SHEET NO.
B-4276	EC-B/CONST.4
RW SHEET NO.	
ROADWAY DESIGN ENGINEER	HYDRAULICS ENGINEER


NOTE:
UTILIZE SPECIAL STILLING BASIN
AS STILLING BASIN WHERE APPLICABLE.

INSTALL FILTER FABRIC UNDER
TEMPORARY ROCK SILT CHECK(S)
TYPE A IN PERMITTED WETLANDS.

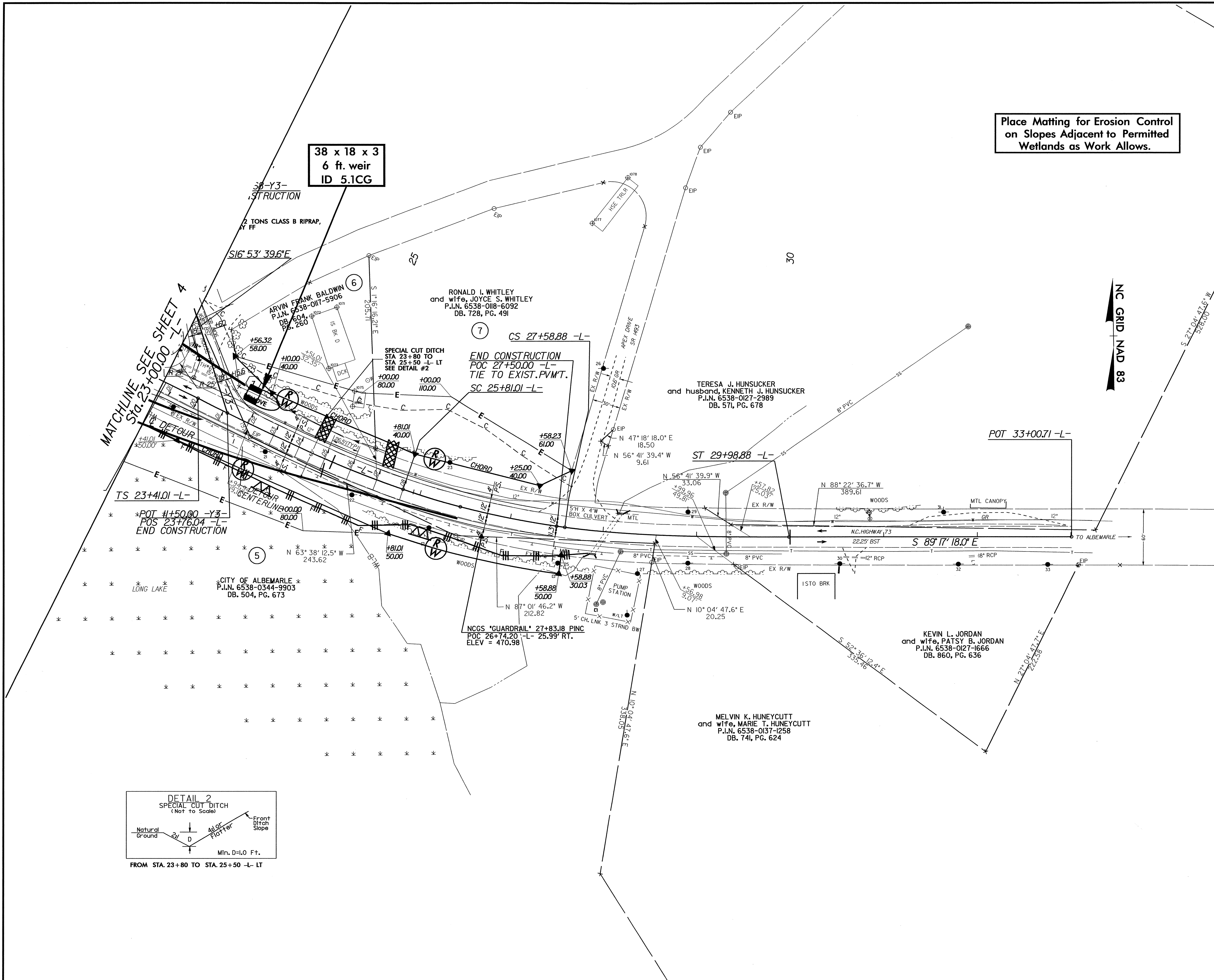
Place Matting for Erosion Control
on Slopes Adjacent to Permitted
Wetlands as Work Allows.



MATCHLINE SEE SHEET 5
Sta. 23+00.00 -L-

PROJECT REFERENCE NO.		SHEET NO.	
B-4276		EC-9/CONST.5	
RW SHEET NO.			
ROADWAY DESIGN ENGINEER		HYDRAULICS ENGINEER	
			

Place Matting for Erosion Control on Slopes Adjacent to Permitted Wetlands as Work Allows.



MATCHLINE SEE SHEET 4
Sta. 23+00.00 -L-

38 x 18 x 3
6 ft. weir
ID 5.1CG

END CONSTRUCTION
POC 27+50.00 -L-
TIE TO EXIST. PVMT.

NC GRID NAD 83

