

STATE OF NORTH CAROLINA
DIVISION OF HIGHWAYS

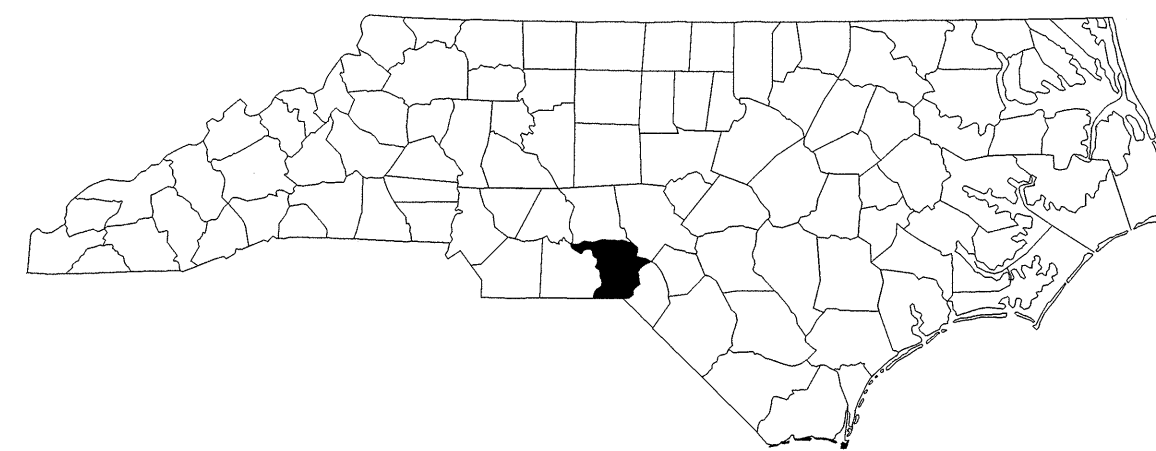
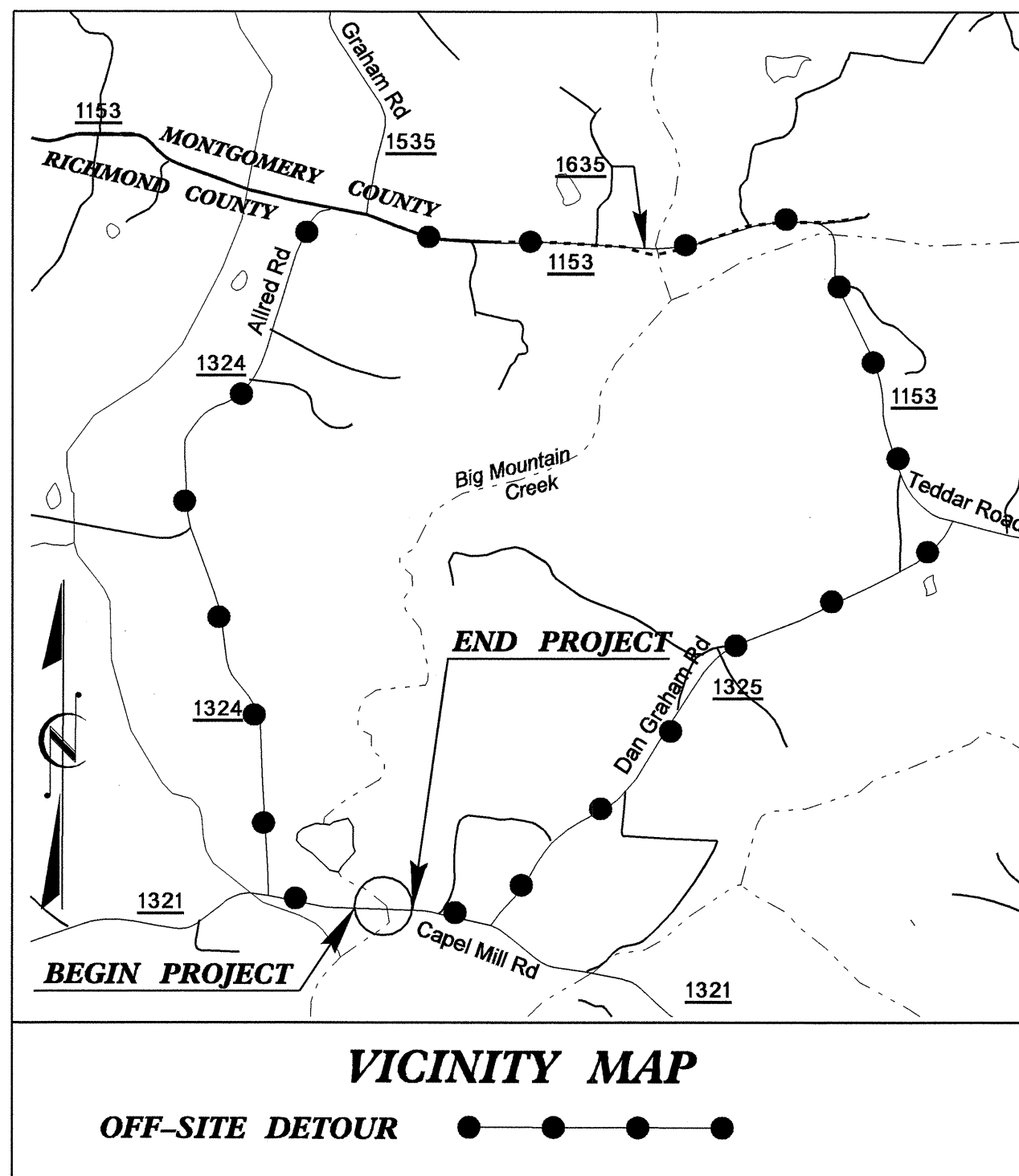
**UTILITY BY OTHERS PLANS
RICHMOND COUNTY**

**LOCATION: BRIDGE NO. 129 OVER BIG MOUNTAIN CREEK
AND APPROACHES ON SR 1321 (CAPEL MILL ROAD)**

TYPE OF WORK: TELEPHONE RELOCATION

UO-1

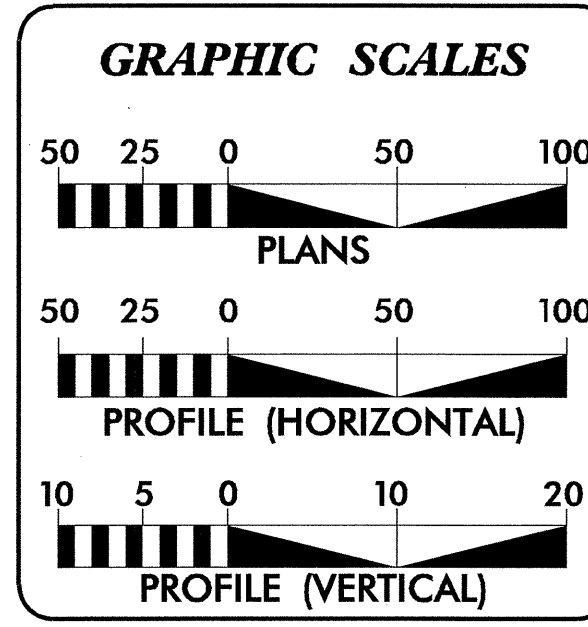
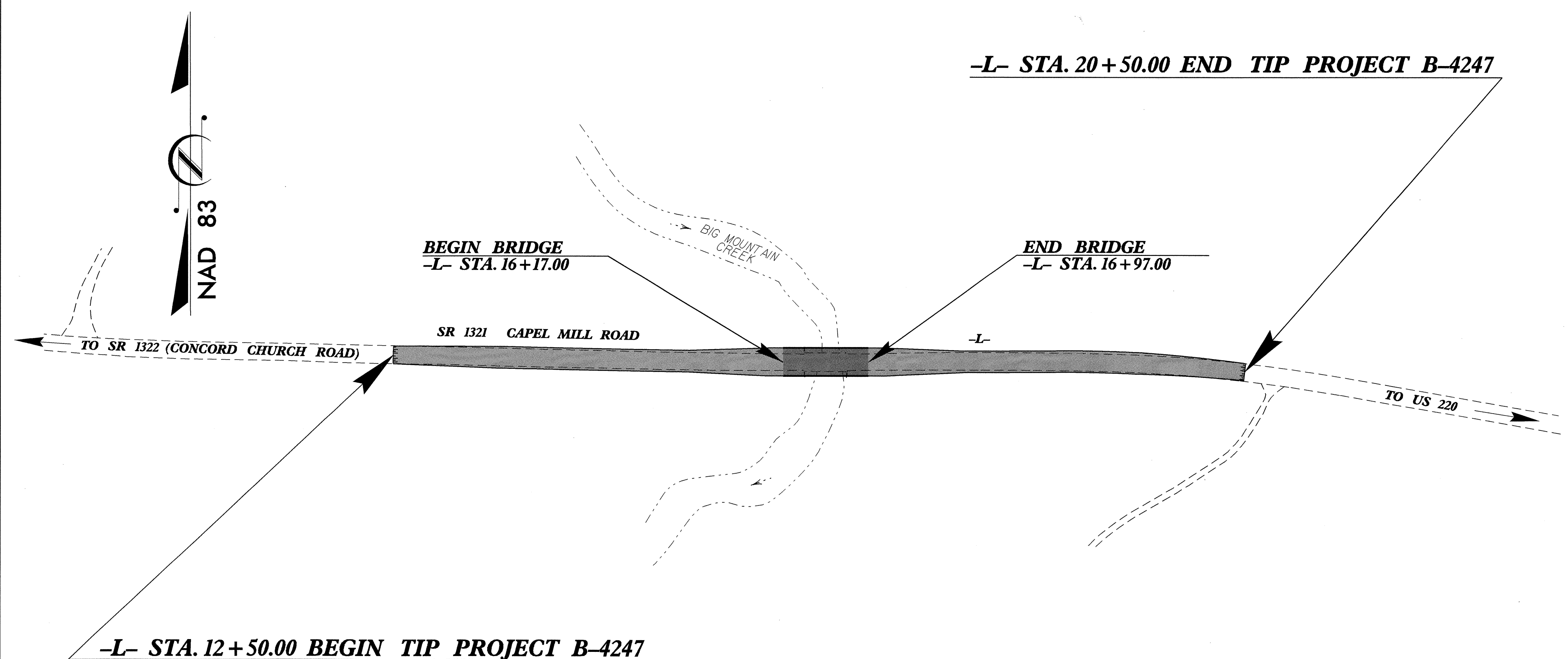
TIP PROJECT: B-4247



CLEARING ON THIS PROJECT SHALL BE PERFORMED TO THE LIMITS ESTABLISHED BY METHOD III.

THIS PROJECT IS NOT WITHIN ANY MUNICIPAL BOUNDARIES.

THIS PROJECT IS DESIGNED USING THE SUBREGIONAL TIER DESIGN GUIDELINES FOR NCDOT BRIDGE PROJECTS. THE ELEMENTS REQUIRING MINIMUM VALUES FOR DESIGN ARE LANE WIDTH, SHOULDER WIDTH, BRIDGE WIDTH, VERTICAL ALIGNMENT AND VERTICAL STOPPING SIGHT DISTANCE.



INDEX OF SHEETS	
SHEET NO.	DESCRIPTION
UO-1	TITLE SHEET
UO-2	UTILITY BY OTHERS PLAN SHEET

UTILITY OWNERS ON PROJECT	
(1) ELLERBE TELEPHONE	

PREPARED IN THE OFFICE OF:
**DIVISION OF HIGHWAYS
UTILITIES ENGINEERING
SECTION**

1591 MAIL SERVICES CENTER
RALEIGH, NC 27699-1591
PHONE (919) 259-4128
FAX (919) 259-4119

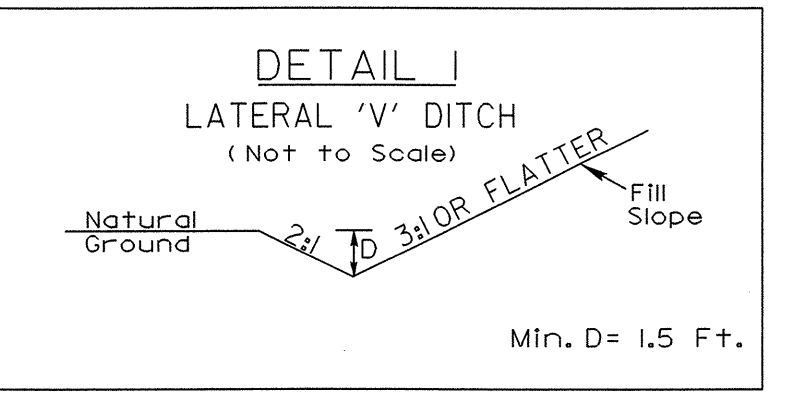
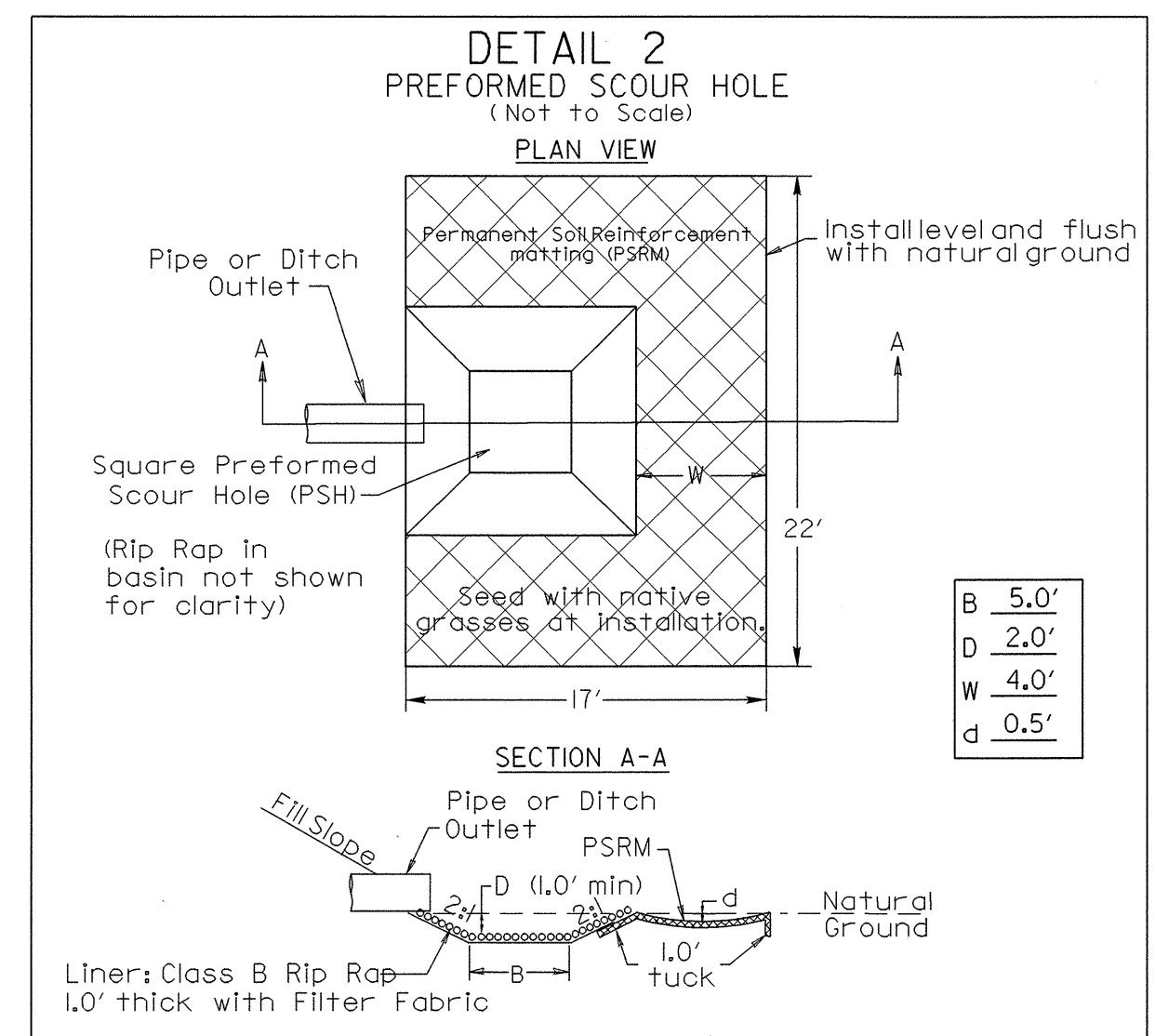
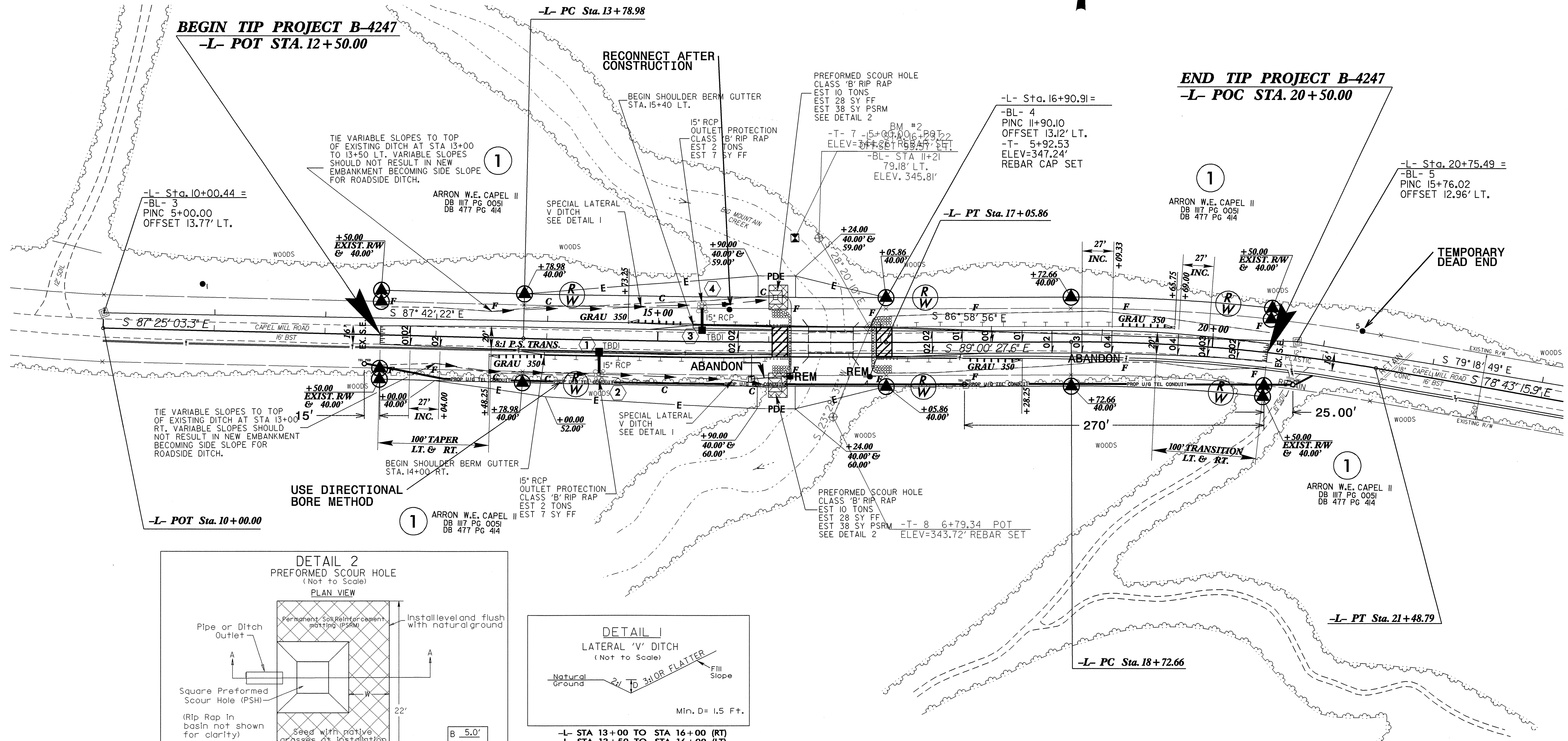
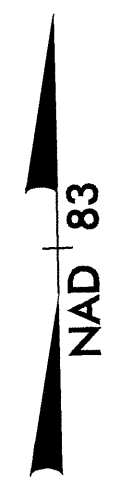
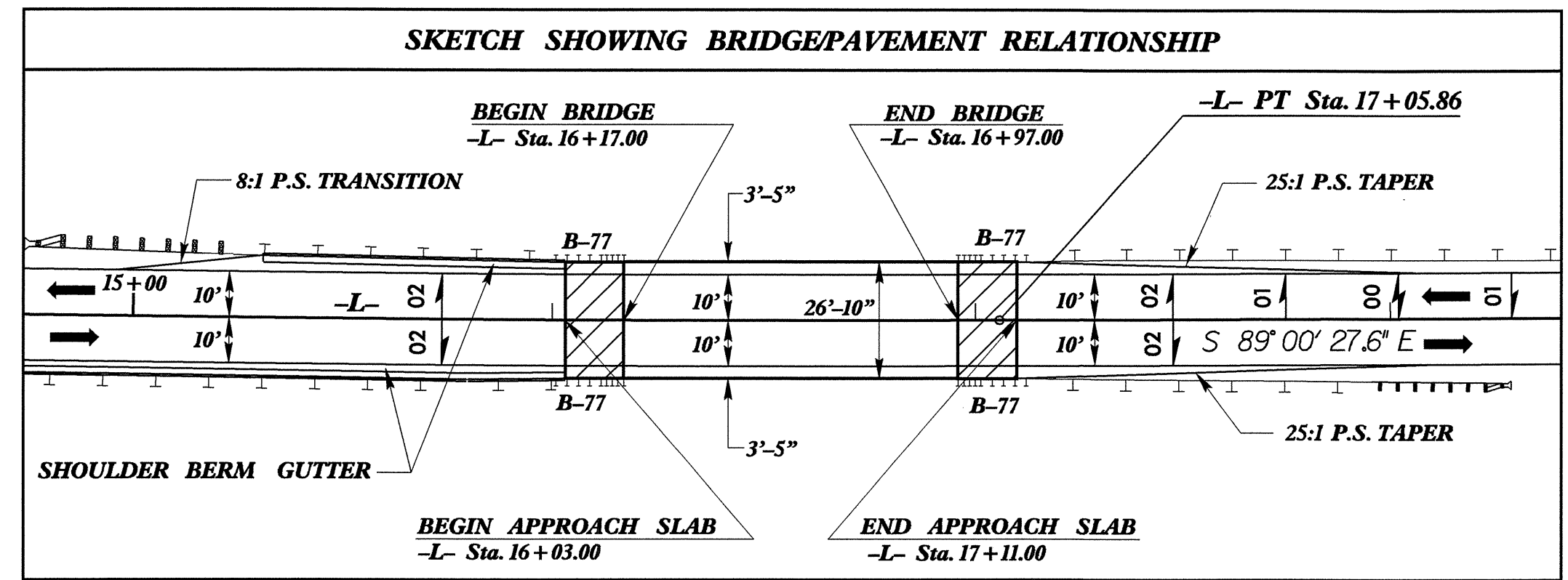
Roger Worthington, P.E. UTILITIES SECTION ENGINEER
Carl Barclay, P.E. UTILITIES SQUAD LEADER PROJECT ENGINEER
Ali Kouchehi, P.E. UTILITIES PROJECT DESIGNER

02-DEC-2008 16:39
F:\utilities\rdy\ut\proj\b4247_rdy_tsh.dgn
\$\$\$\$\$USERNAME\$\$\$\$\$

UTILITIES BY OTHERS

NOTE:
ALL PROPOSED UTILITY WORK SHOWN ON THIS SHEET WILL BE DONE BY OTHERS

DESIGN EXCEPTIONS FOR LANE WIDTH, SHOULDER WIDTH, VERTICAL ALIGNMENT AND VERTICAL STOPPING SIGHT DISTANCE ARE REQUIRED.



USE DIRECTIONAL BORE METHOD

-L-	
PI Sta 15+42.43	PI Sta 20+11.10
$\Delta = 1^{\circ}35'24.3"$ (LT)	$\Delta = 10^{\circ}17'11.7"$ (RT)
D = 0'29'11.2"	D = 3'43'31.0"
L = 326.87'	L = 276.13'
T = 163.45'	T = 138.44'
R = 11,778.37'	R = 1,538.03'
SE = NC	SE = 0.04
	RO = SEE PLANS

NOTE: TELEPHONE CONDUIT WILL BE BORED AT MINIMUM 6' BENEATH EXISTING GROUND AND MINIMUM 5' BENEATH THE CREEK BED

NOTES:
1.) FOR -L- PROFILE SEE SHEET 5.
2.) FOR STRUCTURE PLANS SEE SHEETS S-1 THRU S-2.

REVISIONS

6/17/99
022101E:20060518E19
11/11/11 11:55:00 AM
C:\Users\jrb\Documents\B-4247\Drawings\p18.dwg