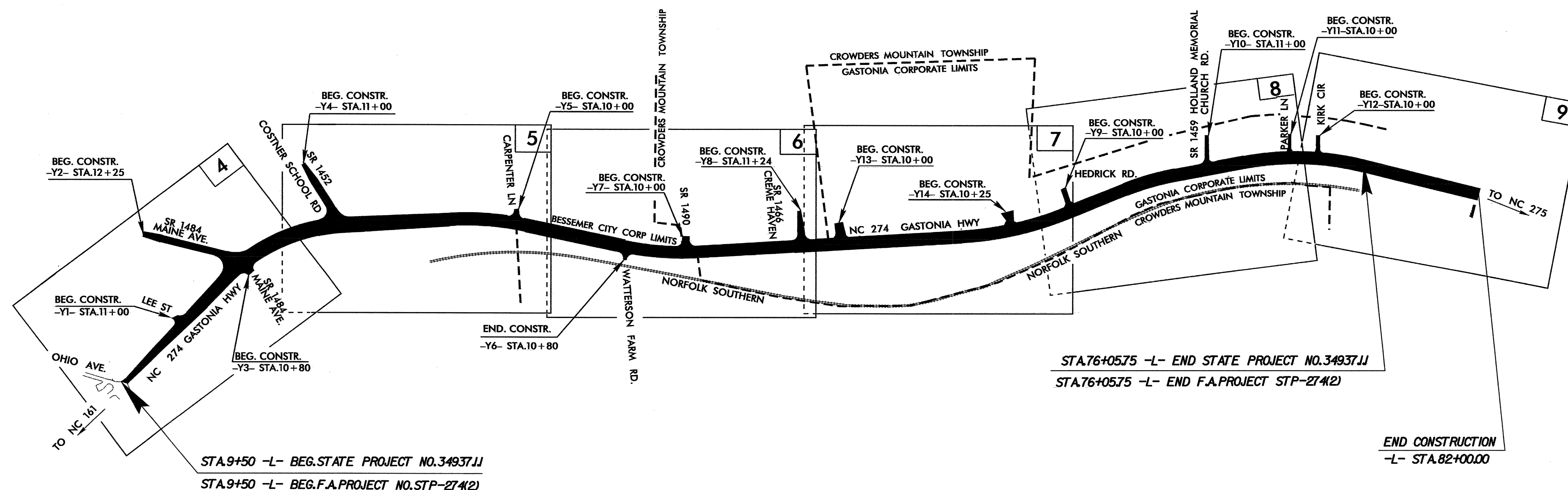


TIP PROJECT: U-3405

STATE OF NORTH CAROLINA
 DIVISION OF HIGHWAYS
 PLAN FOR PROPOSED
 HIGHWAY EROSION CONTROL
GASTON COUNTY

**LOCATION: NC 274, GASTONIA HIGHWAY FROM SR 1484,
 MAINE AVE, TO WEST OF NC 275**

**TYPE OF WORK: GRADING, DRAINAGE, WIDENING, PAVING,
 SIDEWALK, CURB AND GUTTER, AND SIGNALS**



STATE	STATE PROJECT REFERENCE NO.	SHEET NO.	TOTAL SHEETS
N.C.	U-3405	EC-1	
STATE PROJ.NO.	F.A.PROJ.NO.	DESCRIPTION	

EROSION AND SEDIMENT CONTROL MEASURES

Std. #	Description	Symbol
1630.03	Temporary Silt Ditch	TD
1630.05	Temporary Diversion	TD
1605.01	Temporary Silt Fence	III III III
1606.01	Special Sediment Control Fence	III III III
1622.01	Temporary Berms and Slope Drains	TD
1630.01	Riser Basin	TD
1633.01	Silt Basin Type B	TD
1633.01	Temporary Rock Silt Check Type-A	TD
1633.01	Temporary Rock Silt Check Type-B	TD
1633.01	Wattle	TD
1634.01	Temporary Rock Sediment Dam Type-A	TD
1634.02	Temporary Rock Sediment Dam Type-B	TD
1635.01	Rock Pipe Inlet Sediment Trap Type-A	TD
1635.02	Rock Pipe Inlet Sediment Trap Type-B	TD
1630.04	Stilling Basin	TD
1630.06	Special Stilling Basin	TD
Rock Inlet Sediment Trap:		
1632.01	Type A	A
1632.02	Type B	B
1632.03	Type C	C
	Skimmer Basin	TD
	Tiered Skimmer Basin	TD
	Infiltration Basin	TD

**THIS PROJECT CONTAINS
 EROSION CONTROL PLANS
 FOR CLEARING AND
 GRUBBING PHASE OF
 CONSTRUCTION.**

GRAPHIC SCALE

0

PLANS

0

PROFILE (HORIZONTAL)

0

PROFILE (VERTICAL)

**ROADSIDE ENVIRONMENTAL UNIT
 DIVISION OF HIGHWAYS
 STATE OF NORTH CAROLINA**

Prepared in the Office of:
ROADSIDE ENVIRONMENTAL UNIT
 1 South Wilmington St.
 Raleigh, NC 27611
2006 STANDARD SPECIFICATIONS

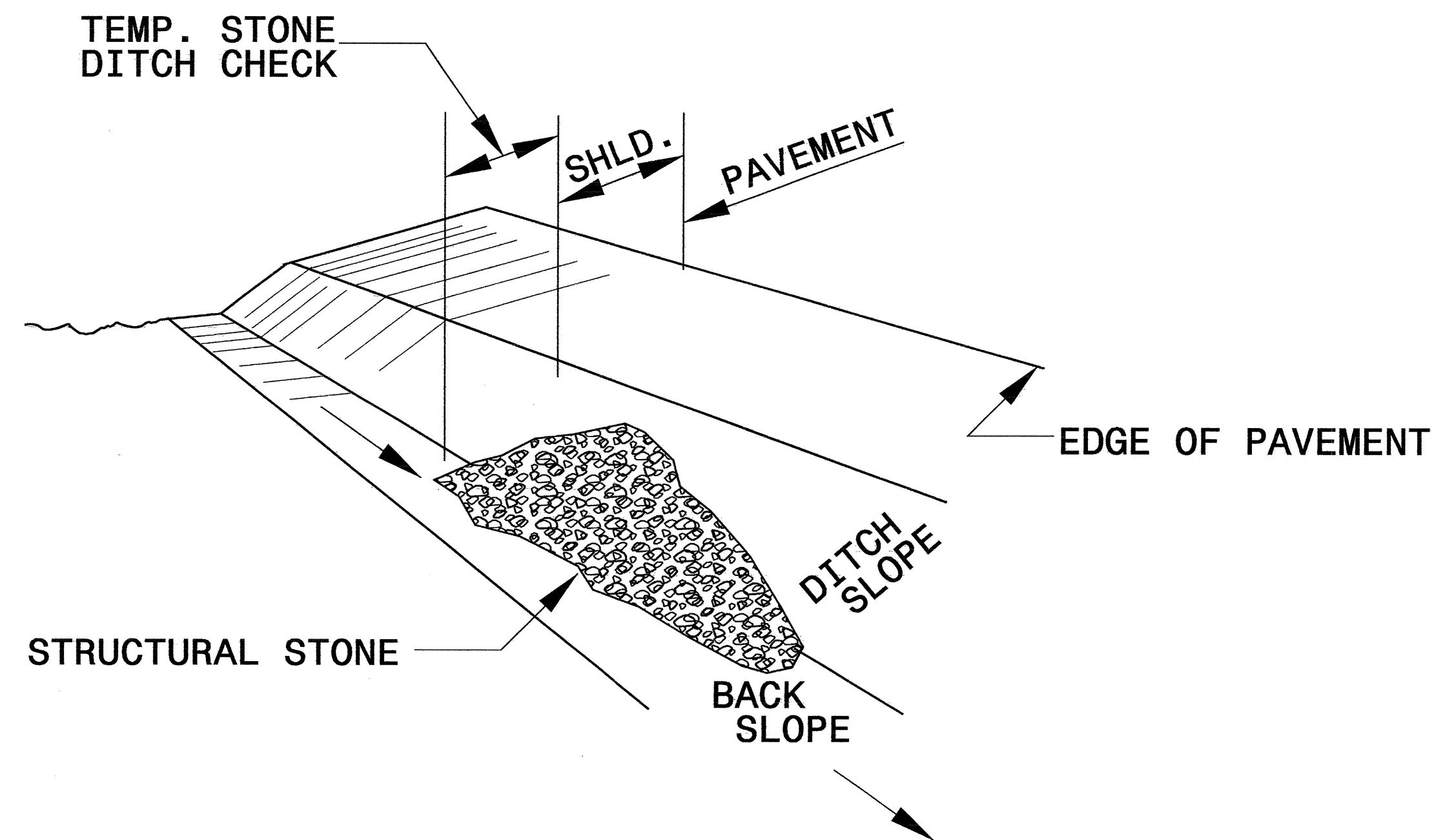
Roadway Standard Drawings

The following roadway english standards as appear in "Roadway Standard Drawings"- Roadway Design Unit - N. C. Department of Transportation - Raleigh, N. C., dated July 18, 2006 and the latest revision thereto are applicable to this project and by reference hereby are considered a part of these plans.

1605.01 Temporary Silt Fence
 1607.01 Gravel Construction Entrance
 1622.01 Temporary Berms and Slope Drains
 1632.02 Rock Inlet Sediment Trap Type B
 1632.03 Rock Inlet Sediment Trap Type C
 1633.01 Temporary Rock Silt Check Type A
 1635.02 Rock Pipe Inlet Sediment Trap Type B

PROJECT REFERENCE NO. U-3405	SHEET NO. EC-2
RW SHEET NO.	
ROADWAY DESIGN ENGINEER	HYDRAULICS ENGINEER

TEMPORARY ROCK SILT CHECK TYPE 'B' DETAIL

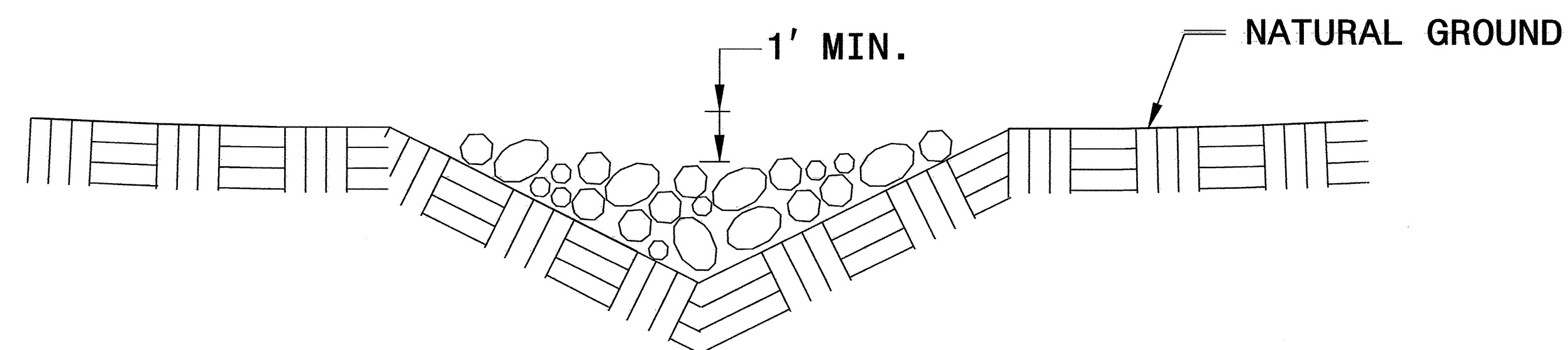


ISOMETRIC VIEW

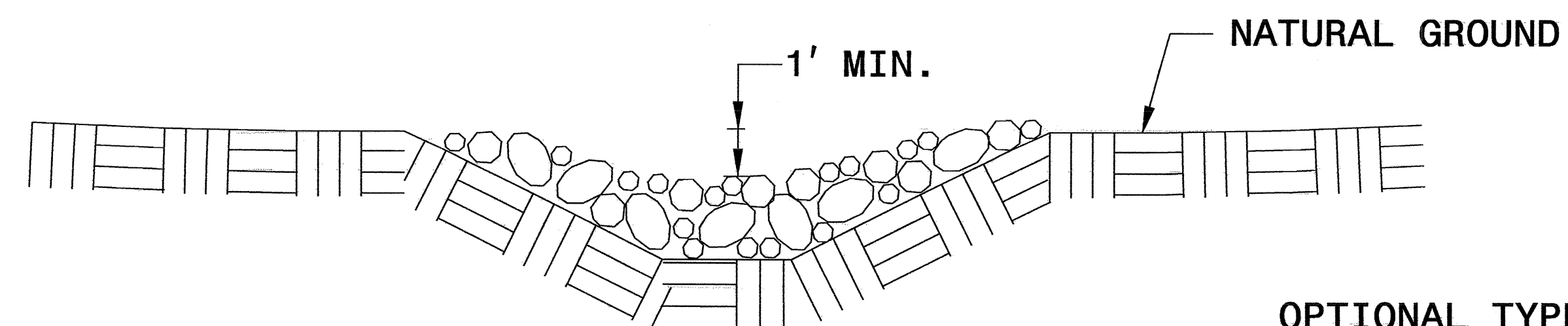
NOTES:

USE CLASS 'B' EROSION CONTROL STONE FOR STRUCTURAL STONE.

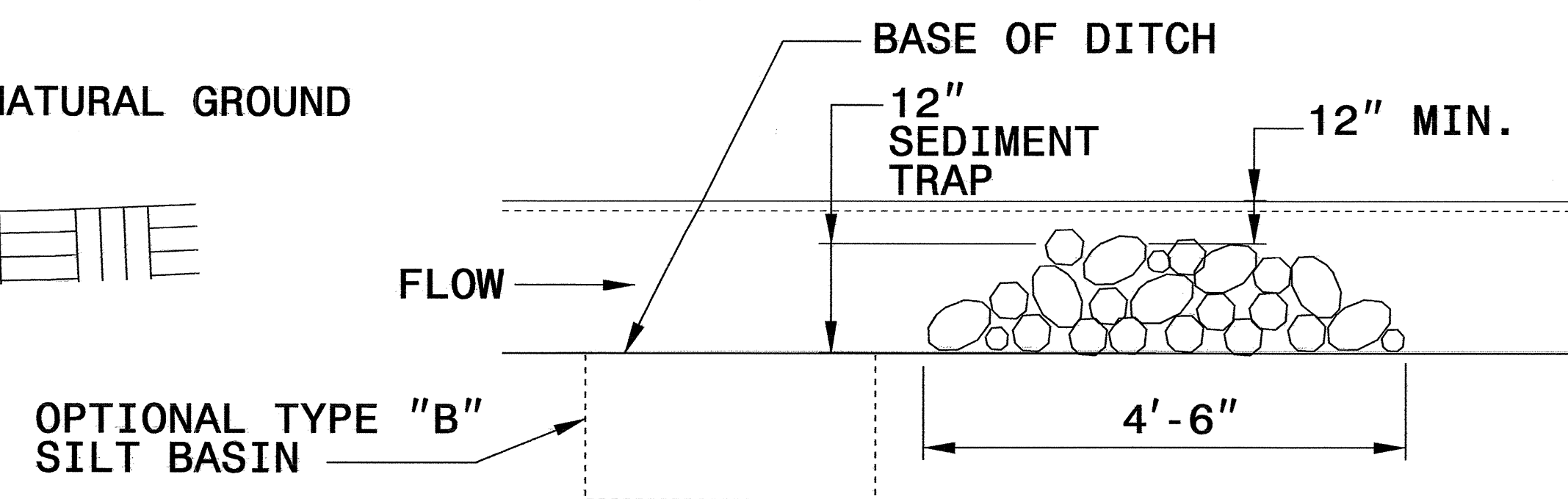
THE ENGINEER MAY DIRECT THE OPTION OF CLASS "A" STONE FOR SITES HAVING LESS THAN ONE (1) ACRE DRAINAGE AREA AND A DITCH GRADE LESS THAN 3%.



**CROSS SECTION
VEE DITCH**



**CROSS SECTION
TRAPEZOIDAL DITCH**

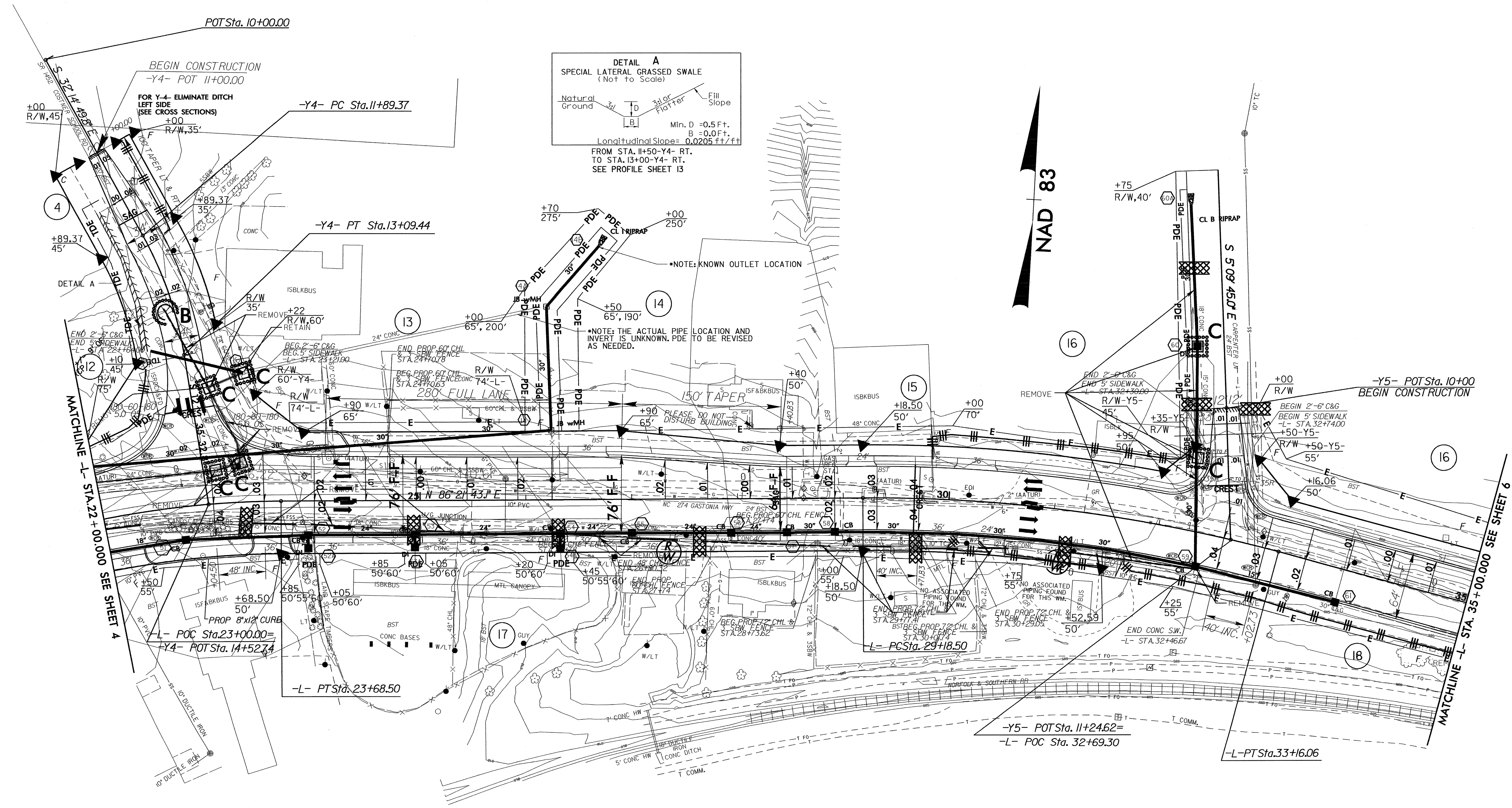


ELEVATION VIEW

NOTE:
PLACE TEMPORARY ROCK SEDIMENT DAMS TYPE - B
AND TEMPORARY ROCK SILT CHECKS TYPE - A AT
DRAINAGE OUTLETS.

CLEARING AND GRUBBING
EROSION CONTROL FOR
CONSTRUCTION SHEET 05

PROJECT REFERENCE NO.		SHEET NO.	
U-3405		EC-05/CONST.05	
RW SHEET NO.			
ROADWAY DESIGN ENGINEER		HYDRAULICS ENGINEER	



DETAIL A
SPECIAL LATERAL GRASSED SWALE
(Not to Scale)

Natural Ground 3:1 D 3:1 or Flatter Fill Slope

Min. D = 0.5 Ft.
B = 0.0 Ft.
Longitudinal Slope = 0.0205 ft/ft

FROM STA. 11+50-Y4- RT.
TO STA. 13+00-Y4- RT.
SEE PROFILE SHEET 13

NAD 83

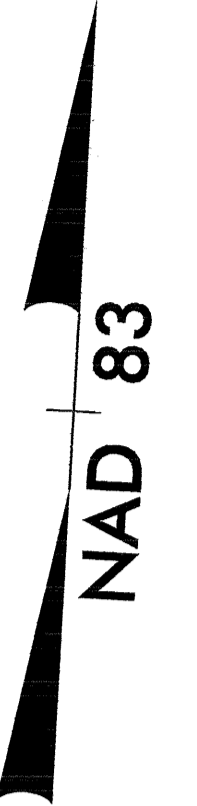
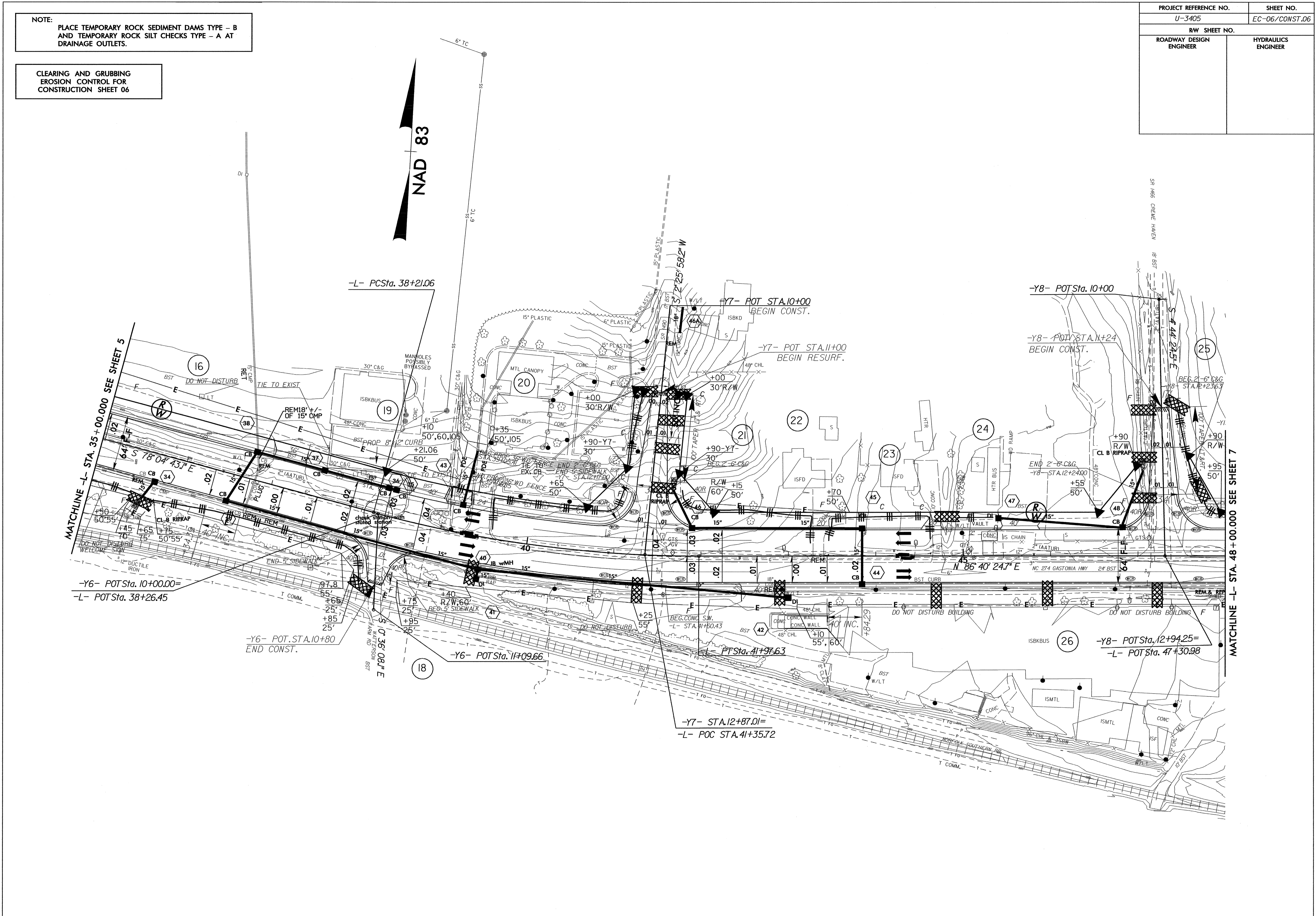
MATCHLINE -L- STA. 22+00.000 SEE SHEET 4

MATCHLINE -L- STA. 35+00.000 SEE SHEET 6

NOTE:
PLACE TEMPORARY ROCK SEDIMENT DAMS TYPE - B
AND TEMPORARY ROCK SILT CHECKS TYPE - A AT
DRAINAGE OUTLETS.

CLEARING AND GRUBBING
EROSION CONTROL FOR
CONSTRUCTION SHEET 06

PROJECT REFERENCE NO.		SHEET NO.	
U-3405		EC-06/CONST.06	
RW SHEET NO.			
ROADWAY DESIGN ENGINEER		HYDRAULICS ENGINEER	



MATCHLINE -L- STA. 35+00.00 SEE SHEET 5

MATCHLINE -L- STA. 48+00.00 SEE SHEET 7

-Y6- POT Sta. 10+00.00=
-L- POT Sta. 38+26.45

-Y6- POT Sta. 10+80
END CONST.

-Y6- POT Sta. 11+09.66

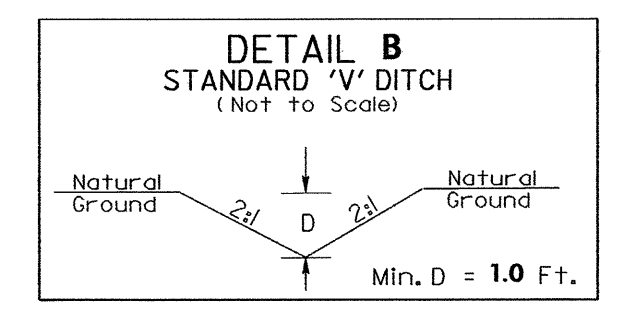
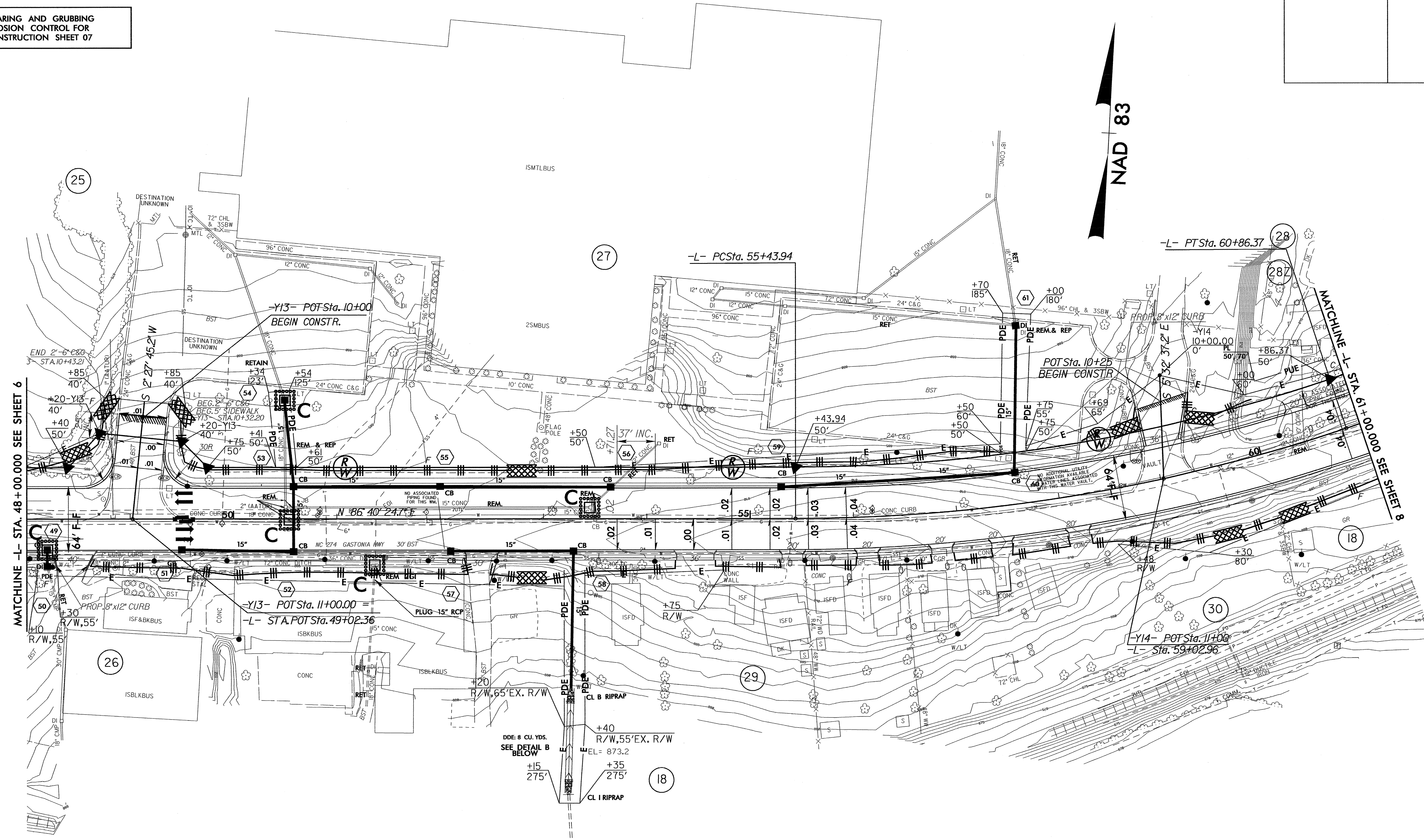
-Y7- STA. 12+87.01=
-L- POC STA. 41+35.72

-Y8- POT Sta. 12+94.25=
-L- POT Sta. 47+30.98

PROJECT REFERENCE NO. U-3405	SHEET NO. EC-07/CONST.07
RW SHEET NO.	
ROADWAY DESIGN ENGINEER	HYDRAULICS ENGINEER

NOTE:
PLACE TEMPORARY ROCK SEDIMENT DAMS TYPE - B
AND TEMPORARY ROCK SILT CHECKS TYPE - A AT
DRAINAGE OUTLETS.

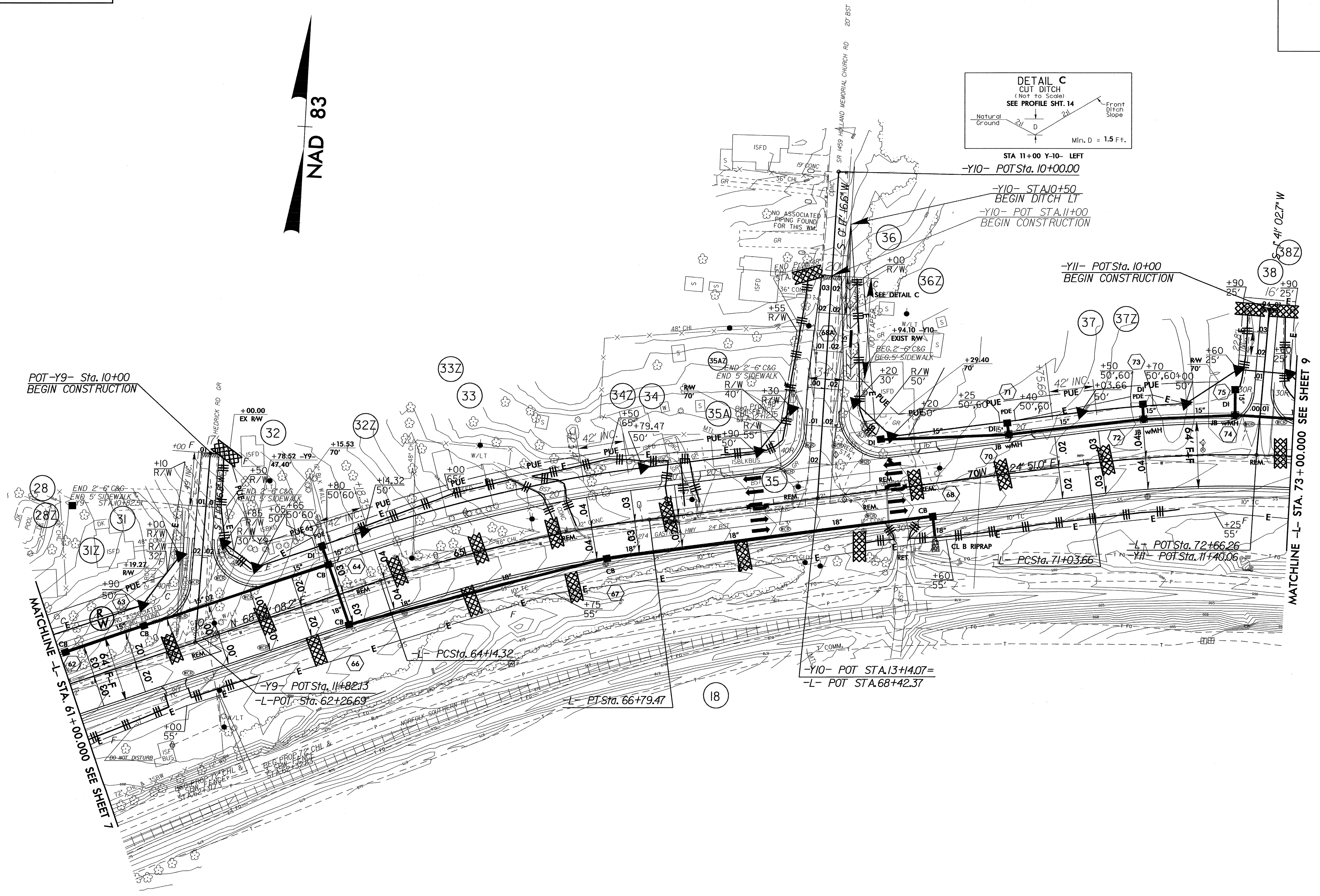
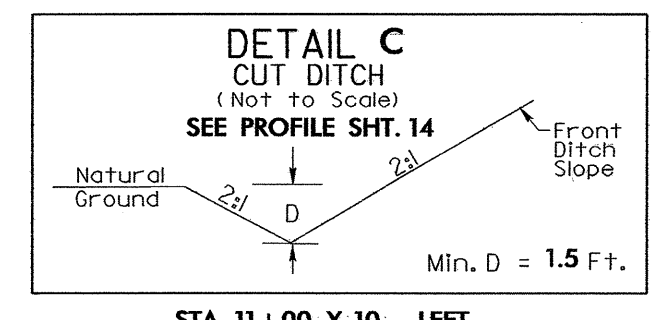
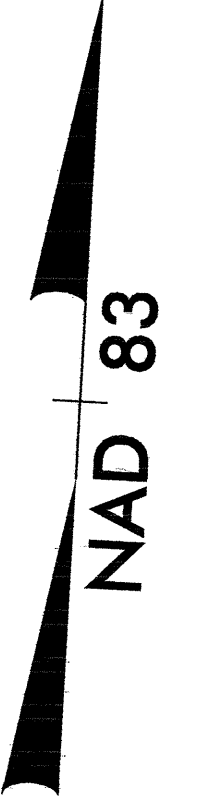
CLEARING AND GRUBBING
EROSION CONTROL FOR
CONSTRUCTION SHEET 07



NOTE:
PLACE TEMPORARY ROCK SEDIMENT DAMS TYPE - B
AND TEMPORARY ROCK SILT CHECKS TYPE - A AT
DRAINAGE OUTLETS.

CLEARING AND GRUBBING
EROSION CONTROL FOR
CONSTRUCTION SHEET 08

PROJECT REFERENCE NO.	SHEET NO.
U-3405	EC-08/CONST.08
RW SHEET NO.	
ROADWAY DESIGN ENGINEER	HYDRAULICS ENGINEER



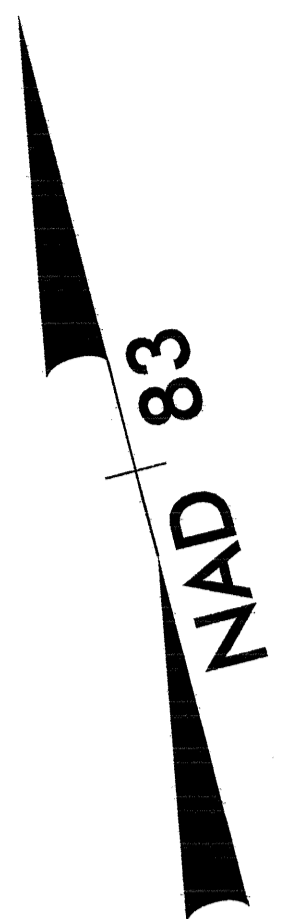
MATCHLINE -L- STA. 61+00.00 SEE SHEET 7

MATCHLINE -L- STA. 73+00.00 SEE SHEET 9

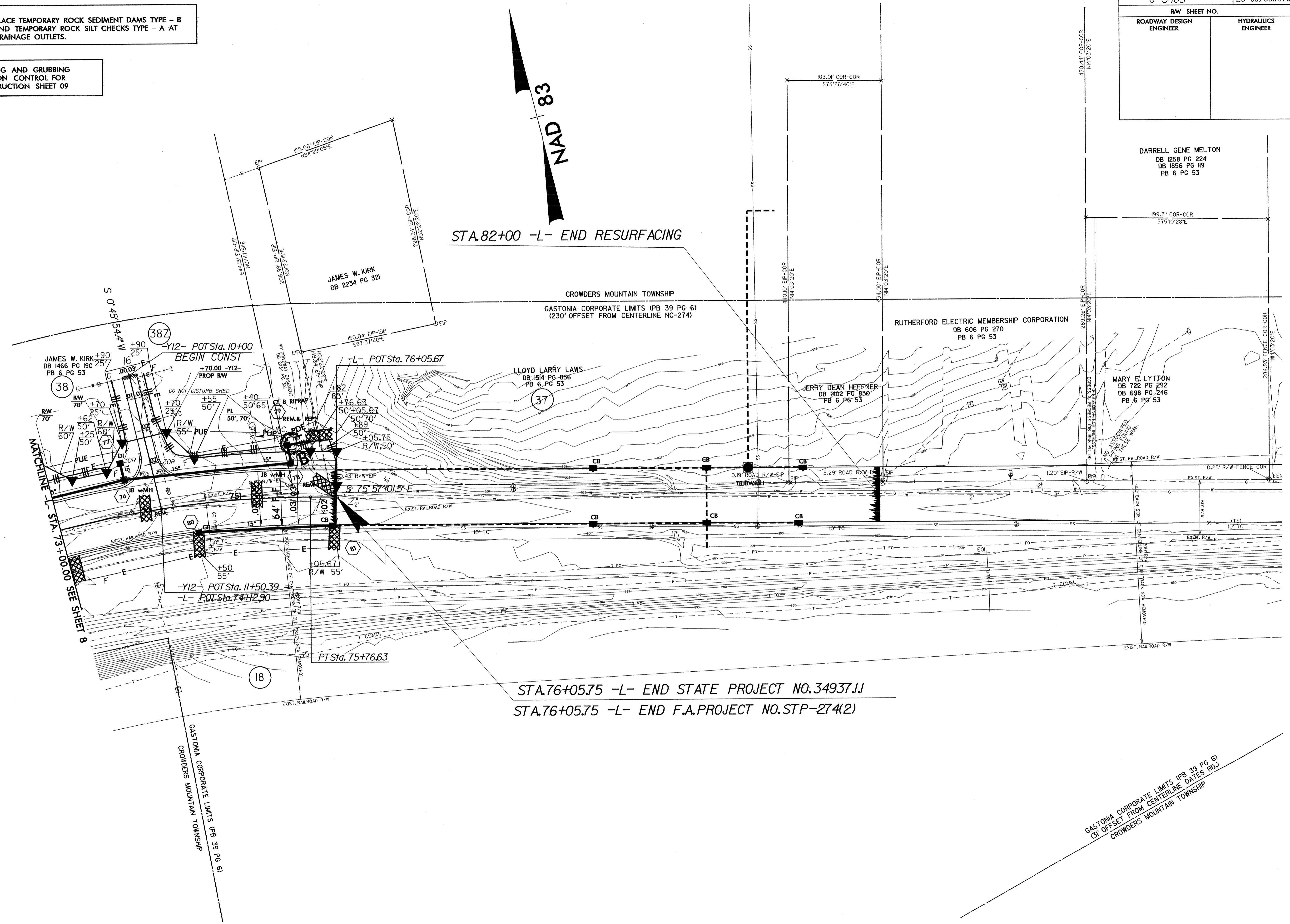
PROJECT REFERENCE NO.		SHEET NO.	
U-3405		EC-09/CONST.09	
RW SHEET NO.			
ROADWAY DESIGN ENGINEER		HYDRAULICS ENGINEER	

NOTE: PLACE TEMPORARY ROCK SEDIMENT DAMS TYPE - B AND TEMPORARY ROCK SILT CHECKS TYPE - A AT DRAINAGE OUTLETS.

CLEARING AND GRUBBING EROSION CONTROL FOR CONSTRUCTION SHEET 09



STA.82+00 -L- END RESURFACING



STA.76+05.75 -L- END STATE PROJECT NO.34937.II
 STA.76+05.75 -L- END F.A.PROJECT NO.STP-274(2)

DARRELL GENE MELTON
 DB 1258 PG 224
 DB 1856 PG 119
 PB 6 PG 53

RUTHERFORD ELECTRIC MEMBERSHIP CORPORATION
 DB 606 PG 270
 PB 6 PG 53

LLOYD LARRY LAWS
 DB 1514 PG 856
 PB 6 PG 53

JERRY DEAN HEFFNER
 DB 2102 PG 830
 PB 6 PG 53

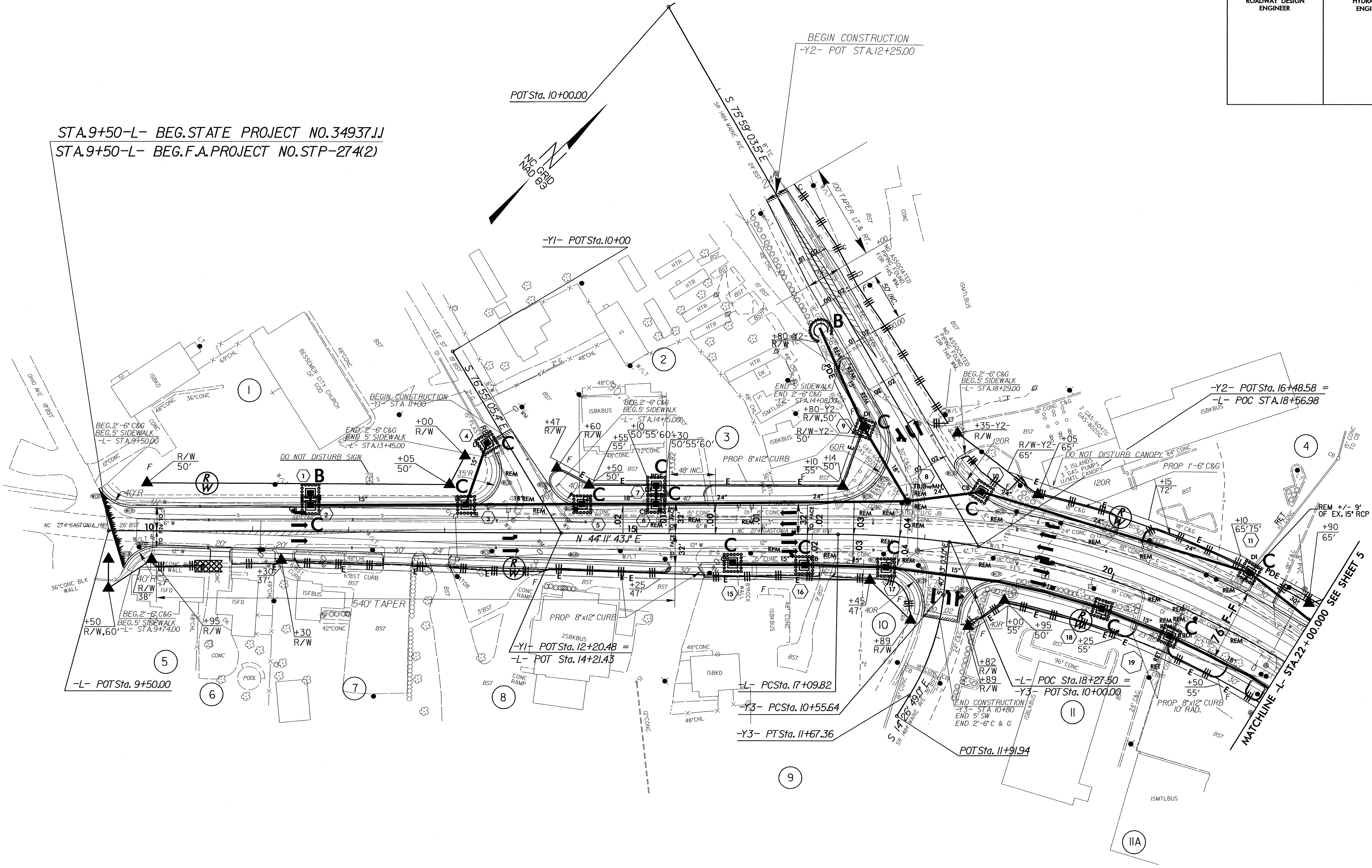
MARY E. LYTTON
 DB 722 PG 292
 DB 698 PG 246
 PB 6 PG 53

JAMES W. KIRK
 DB 1466 PG 190 257
 PB 6 PG 53

GASTONIA CORPORATE LIMITS (PB 39 PG 6)
 (37' OFFSET FROM CENTERLINE DATES RD.)
 CROWDERS MOUNTAIN TOWNSHIP

PROJECT REFERENCE NO.		SHEET NO.	
U-3405		EC-10/CONST.04	
RW SHEET NO.			
ROADWAY DESIGN ENGINEER		HYDRAULICS ENGINEER	

STA.9+50-L- BEG.STATE PROJECT NO.34937.IJ
 STA.9+50-L- BEG.F.A.PROJECT NO.STP-274(2)



-Y2- POT Sta.16+48.58 =
 -L- POC STA.18+56.98

-L- POT Sta.9+50.00

POT Sta.10+00.00

-Y1- POT Sta.10+00

-Y1- POT Sta.12+20.48 =
 -L- POT Sta.14+21.43

-L- PC Sta.17+09.82

-Y3- PC Sta.10+55.64

-Y3- PT Sta.11+67.36

-L- POC Sta.18+27.50 =
 -Y3- POT Sta.10+00.00

POT Sta.11+91.94

MATCHLINE -L- STA.22+00.000 SEE SHEET 5

REM +/- 9'
 OF EX. 15' RCP

+90
 65'

+10
 65'
 75'

+15
 72'

+30
 72'

+45
 72'

+60
 72'

+75
 72'

+90
 72'

+105
 72'

+120
 72'

+135
 72'

+150
 72'

+165
 72'

+180
 72'

+195
 72'

+210
 72'

+225
 72'

+240
 72'

+255
 72'

+270
 72'

+285
 72'

+300
 72'

+315
 72'

+330
 72'

+345
 72'

+360
 72'

+375
 72'

+390
 72'

+405
 72'

+420
 72'

+435
 72'

+450
 72'

+465
 72'

+480
 72'

+495
 72'

+510
 72'

+525
 72'

+540
 72'

+555
 72'

+570
 72'

+585
 72'

+600
 72'

+615
 72'

+630
 72'

+645
 72'

+660
 72'

+675
 72'

+690
 72'

+705
 72'

+720
 72'

+735
 72'

+750
 72'

+765
 72'

+780
 72'

+795
 72'

+810
 72'

+825
 72'

+840
 72'

+855
 72'

+870
 72'

+885
 72'

+900
 72'

+915
 72'

+930
 72'

+945
 72'

+960
 72'

+975
 72'

+990
 72'

+1005
 72'

+1020
 72'

+1035
 72'

+1050
 72'

+1065
 72'

+1080
 72'

+1095
 72'

+1110
 72'

+1125
 72'

+1140
 72'

+1155
 72'

+1170
 72'

+1185
 72'

+1200
 72'

+1215
 72'

+1230
 72'

+1245
 72'

+1260
 72'

+1275
 72'

+1290
 72'

+1305
 72'

+1320
 72'

+1335
 72'

+1350
 72'

+1365
 72'

+1380
 72'

+1395
 72'

+1410
 72'

+1425
 72'

+1440
 72'

+1455
 72'

+1470
 72'

+1485
 72'

+1500
 72'

+1515
 72'

+1530
 72'

+1545
 72'

+1560
 72'

+1575
 72'

+1590
 72'

+1605
 72'

+1620
 72'

+1635
 72'

+1650
 72'

+1665
 72'

+1680
 72'

+1695
 72'

+1710
 72'

+1725
 72'

+1740
 72'

+1755
 72'

+1770
 72'

+1785
 72'

+1800
 72'

+1815
 72'

+1830
 72'

+1845
 72'

+1860
 72'

+1875
 72'

+1890
 72'

+1905
 72'

+1920
 72'

+1935
 72'

+1950
 72'

+1965
 72'

+1980
 72'

+1995
 72'

+2010
 72'

+2025
 72'

+2040
 72'

+2055
 72'

+2070
 72'

+2085
 72'

+2100
 72'

+2115
 72'

+2130
 72'

+2145
 72'

+2160
 72'

+2175
 72'

+2190
 72'

+2205
 72'

+2220
 72'

+2235
 72'

+2250
 72'

+2265
 72'

+2280
 72'

+2295
 72'

+2310
 72'

+2325
 72'

+2340
 72'

+2355
 72'

+2370
 72'

+2385
 72'

+2400
 72'

+2415
 72'

+2430
 72'

+2445
 72'

+2460
 72'

+2475
 72'

+2490
 72'

+2505
 72'

+2520
 72'

+2535
 72'

+2550
 72'

+2565
 72'

+2580
 72'

+2595
 72'

+2610
 72'

+2625
 72'

+2640
 72'

+2655
 72'

+2670
 72'

+2685
 72'

+2700
 72'

+2715
 72'

+2730
 72'

+2745
 72'

+2760
 72'

+2775
 72'

+2790
 72'

+2805
 72'

+2820
 72'

+2835
 72'

+2850
 72'

+2865
 72'

+2880
 72'

+2895
 72'

+2910
 72'

+2925
 72'

+2940
 72'

+2955
 72'

+2970
 72'

+2985
 72'

+3000
 72'

+3015
 72'

+3030
 72'

+3045
 72'

+3060
 72'

+3075
 72'

+3090
 72'

+3105
 72'

+3120
 72'

+3135
 72'

+3150
 72'

+3165
 72'

+3180
 72'

+3195
 72'

+3210
 72'

+3225
 72'

+3240
 72'

+3255
 72'

+3270
 72'

+3285
 72'

+3300
 72'

+3315
 72'

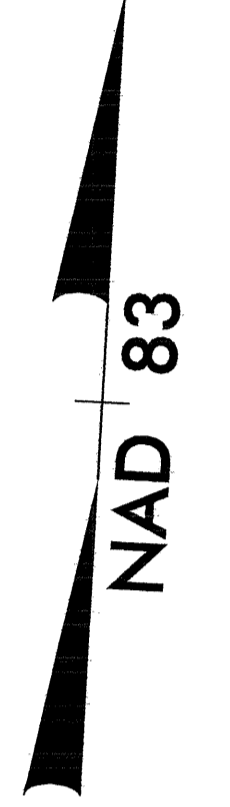
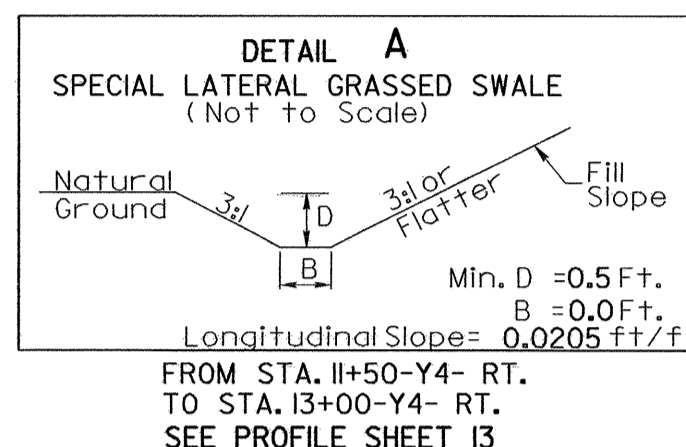
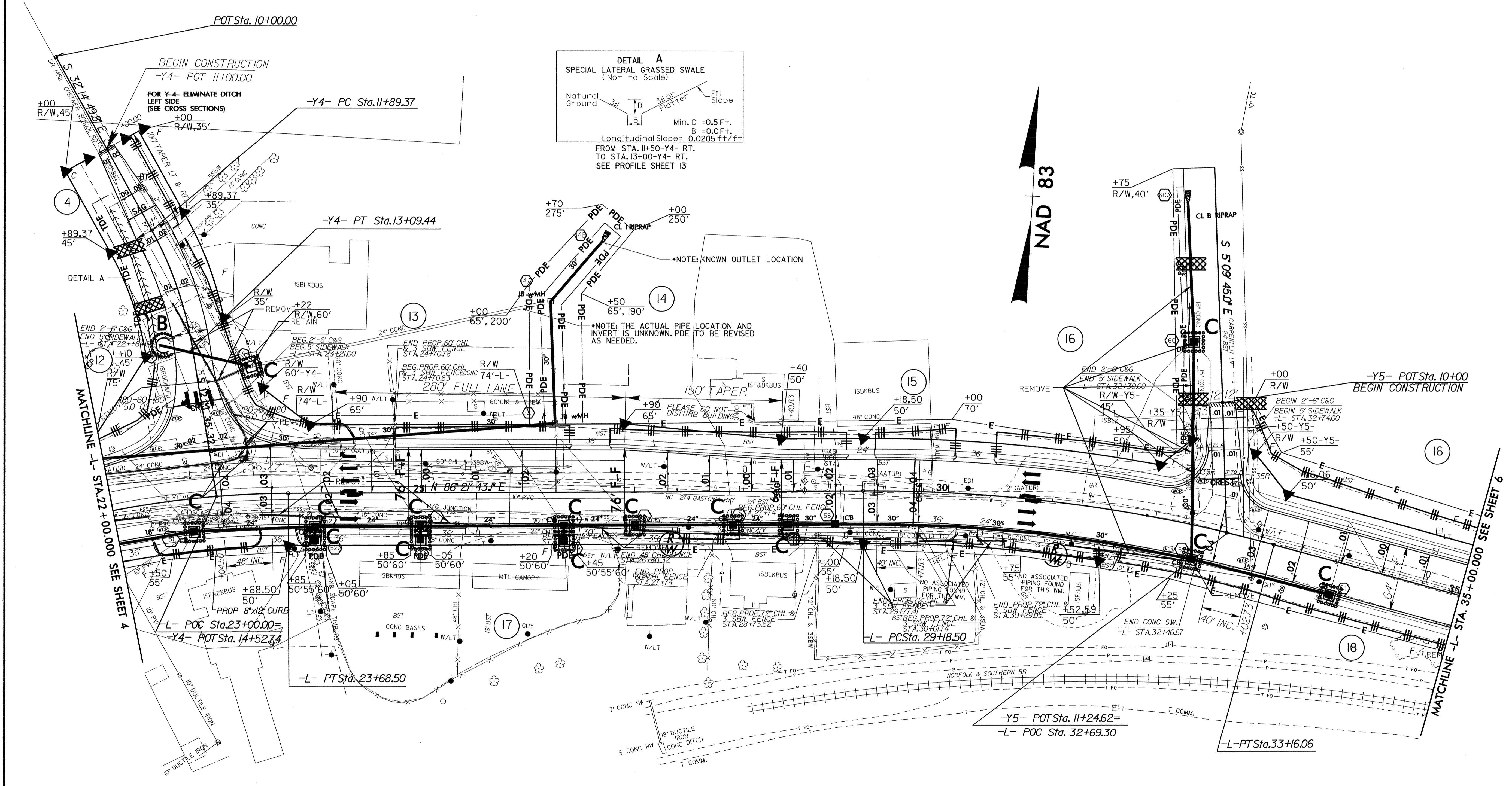
+3330
 72'

+3345
 72'

+3360
 72'

+3375
 72'

PROJECT REFERENCE NO. U-3405	SHEET NO. EC-II/CONST.05
R/W SHEET NO.	
ROADWAY DESIGN ENGINEER	HYDRAULICS ENGINEER



POT Sta. 10+00.00

BEGIN CONSTRUCTION
-Y4- POT 11+00.00

FOR Y-4 ELIMINATE DITCH
LEFT SIDE
(SEE CROSS SECTIONS)

-Y4- PC Sta. 11+89.37

-Y4- PT Sta. 13+09.44

+70
275'

+50
65', 190'

+40
50'

*NOTE: KNOWN OUTLET LOCATION

*NOTE: THE ACTUAL PIPE LOCATION AND
INVERT IS UNKNOWN. PDE TO BE REVISED
AS NEEDED.

150' TAPER

PLEASE DO NOT
DISTURB BUILDING

-Y5- POT Sta. 10+00
BEGIN CONSTRUCTION

MATCHLINE -L- STA. 22+00.000 SEE SHEET 4

MATCHLINE -L- STA. 35+00.000 SEE SHEET 6

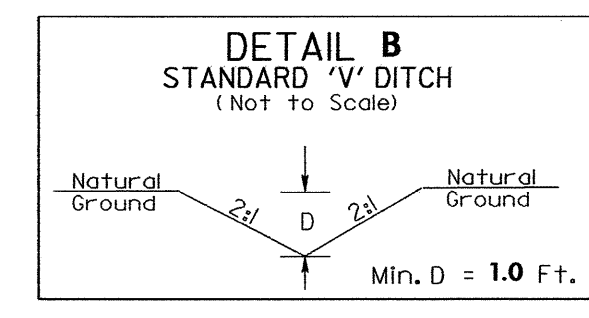
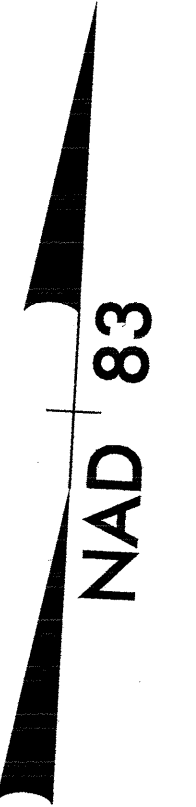
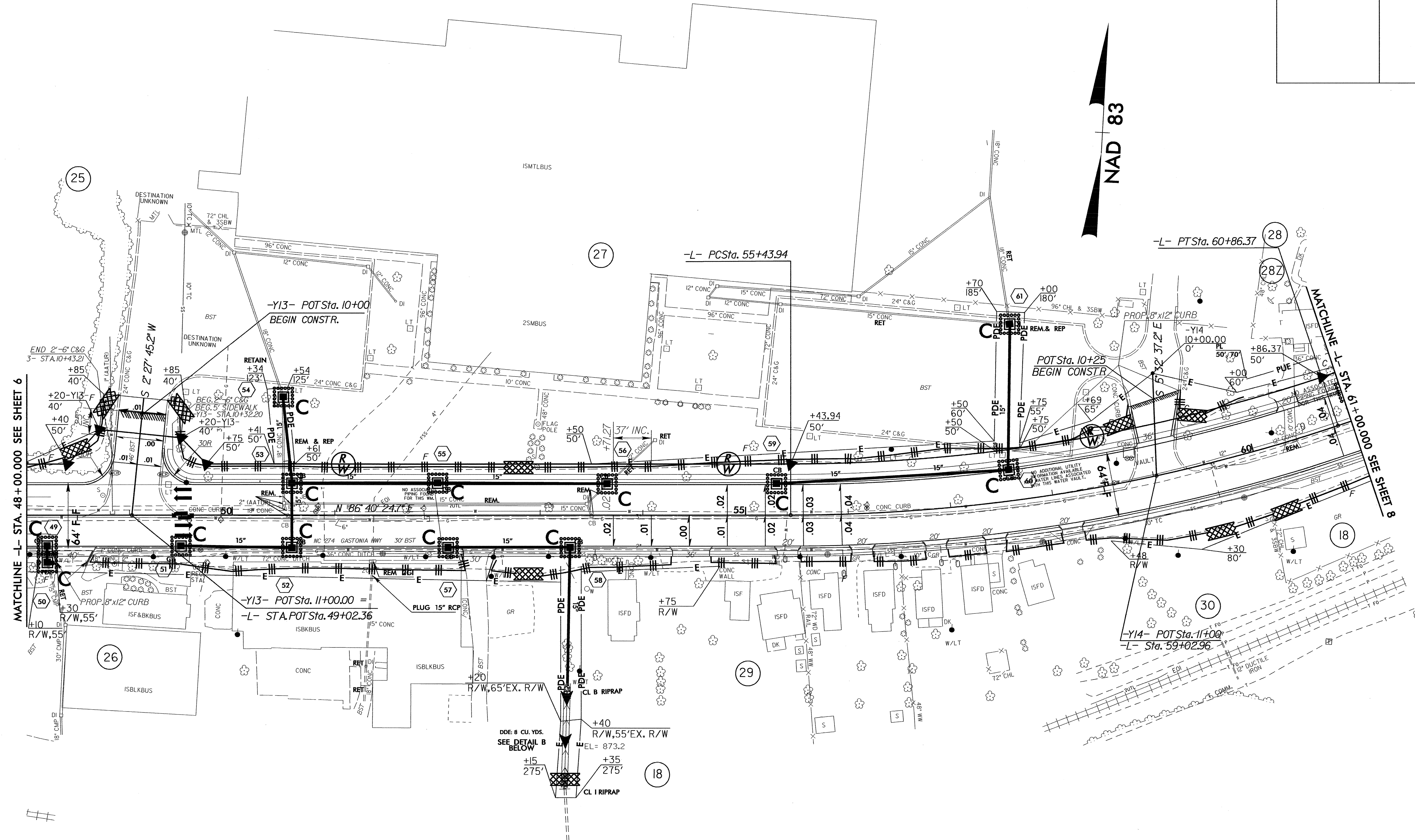
-L- POC Sta. 23+00.00=
-Y4- POT Sta. 14+52.74

-L- PT Sta. 23+68.50

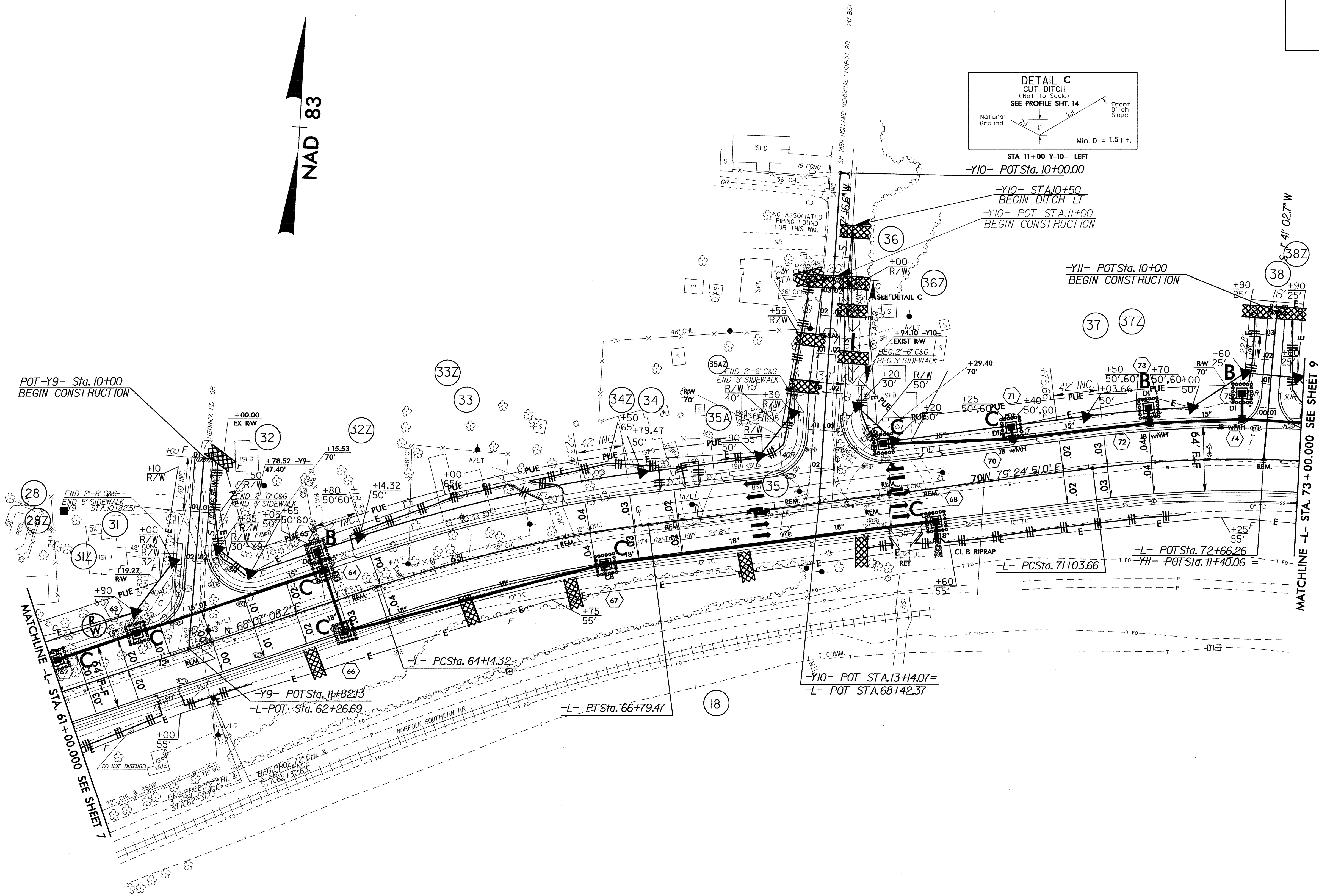
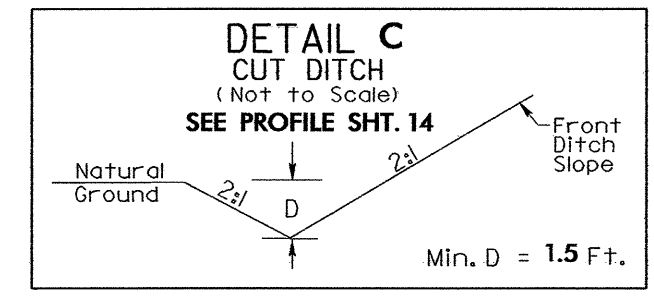
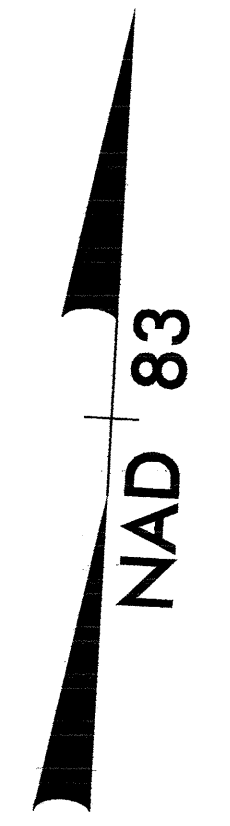
-Y5- POT Sta. 11+24.62=
-L- POC Sta. 32+69.30

-L- PT Sta. 33+6.06

PROJECT REFERENCE NO. U-3405	SHEET NO. EC-13/CONST.07
RW SHEET NO.	
ROADWAY DESIGN ENGINEER	HYDRAULICS ENGINEER



PROJECT REFERENCE NO.		SHEET NO.	
U-3405		EC-14/CONST.08	
RW SHEET NO.			
ROADWAY DESIGN ENGINEER		HYDRAULICS ENGINEER	



POT-Y9- Sta. 10+00
BEGIN CONSTRUCTION

STA 11+00 Y-10- LEFT
-Y10- POT Sta. 10+00.00
-Y10- STA 10+50
BEGIN DITCH LT
-Y10- POT STA. 11+00
BEGIN CONSTRUCTION

-Y11- POT Sta. 10+00
BEGIN CONSTRUCTION

-L- POT Sta. 72+66.26
-Y11- POT Sta. 11+40.06
-L- PCSta. 71+03.66

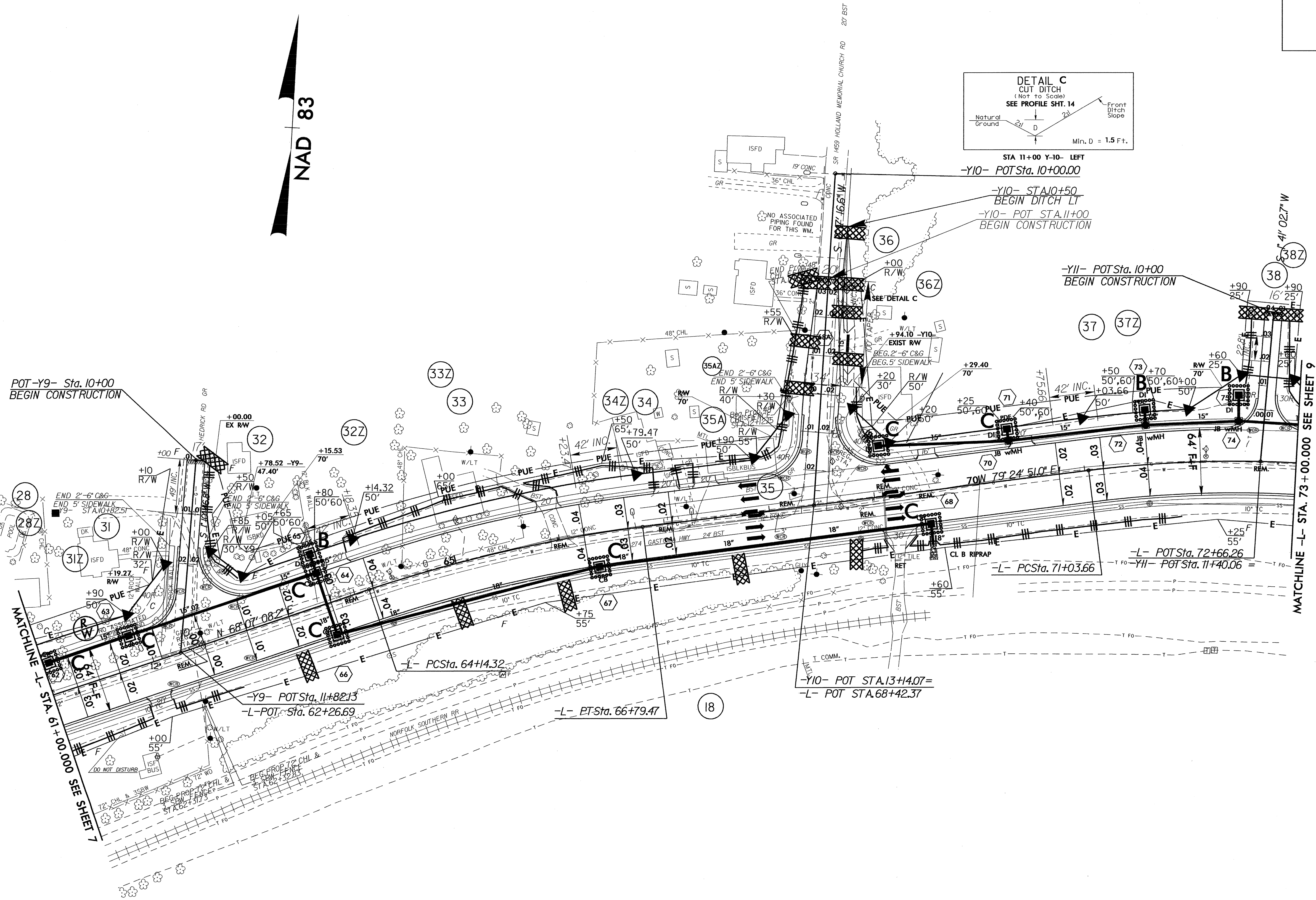
-Y10- POT STA. 13+4.07=
-L- POT STA. 68+42.37

-Y9- POT Sta. 11+82.13
-L- POT Sta. 62+26.69

-L- ET Sta. 66+79.47

MATCHLINE -L- STA. 61+00.000 SEE SHEET 7

MATCHLINE -L- STA. 73+00.000 SEE SHEET 9



PROJECT REFERENCE NO.		SHEET NO.	
U-3405		EC-15/CONST.09	
RW SHEET NO.			
ROADWAY DESIGN ENGINEER		HYDRAULICS ENGINEER	

DARRELL GENE MELTON
 DB 1258 PG 224
 DB 1856 PG 119
 PB 6 PG 53

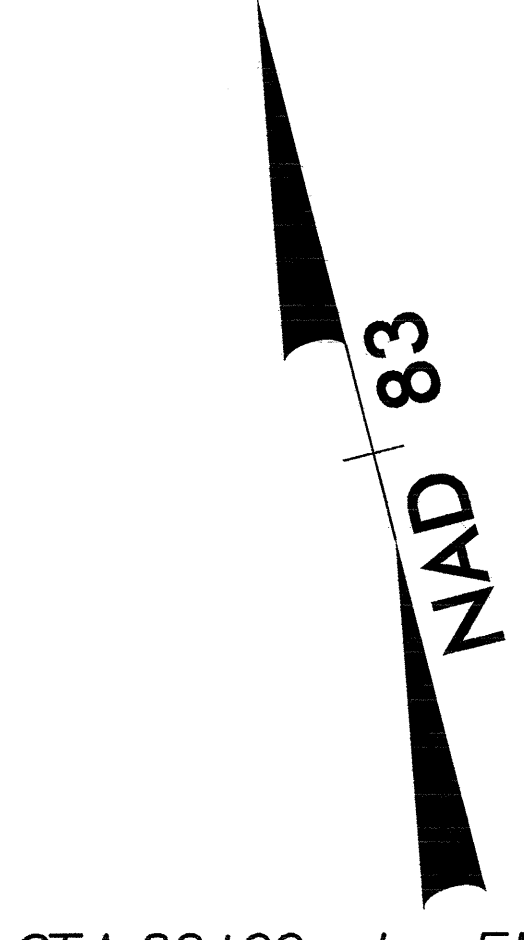
MARY E. LYTTON
 DB 722 PG 292
 DB 698 PG 246
 PB 6 PG 53

JERRY DEAN HEFFNER
 DB 2102 PG 830
 PB 6 PG 53

LLOYD LARRY LAWS
 DB 1514 PG 856
 PB 6 PG 53

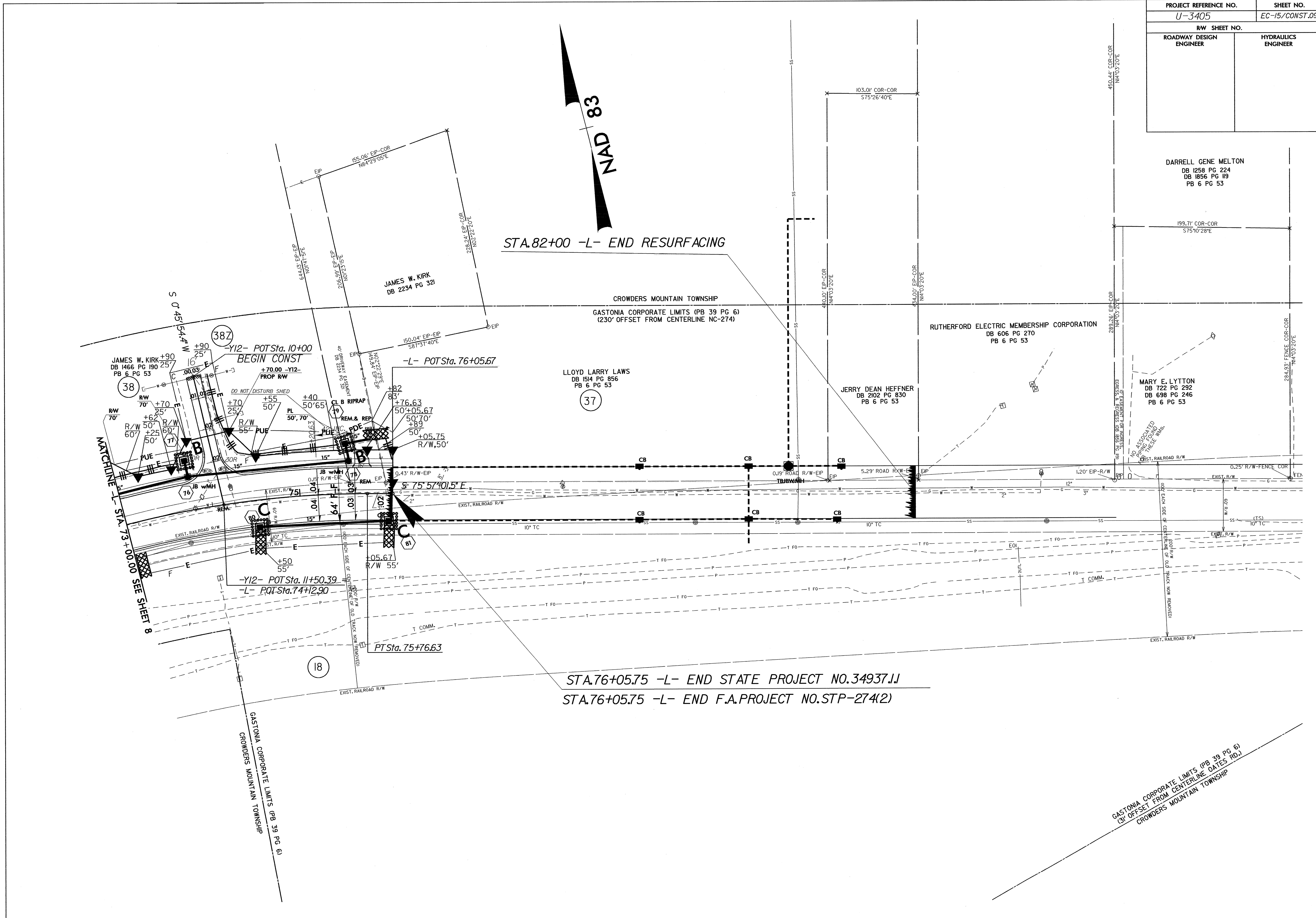
(37)

(18)



STA. 82+00 -L- END RESURFACING

STA. 76+05.75 -L- END STATE PROJECT NO. 34937.1J
 STA. 76+05.75 -L- END F.A. PROJECT NO. STP-274(2)



GASTONIA CORPORATE LIMITS (PB 39 PG 6)
 (30' OFFSET FROM CENTERLINE GATES RD.)
 CROWDERS MOUNTAIN TOWNSHIP