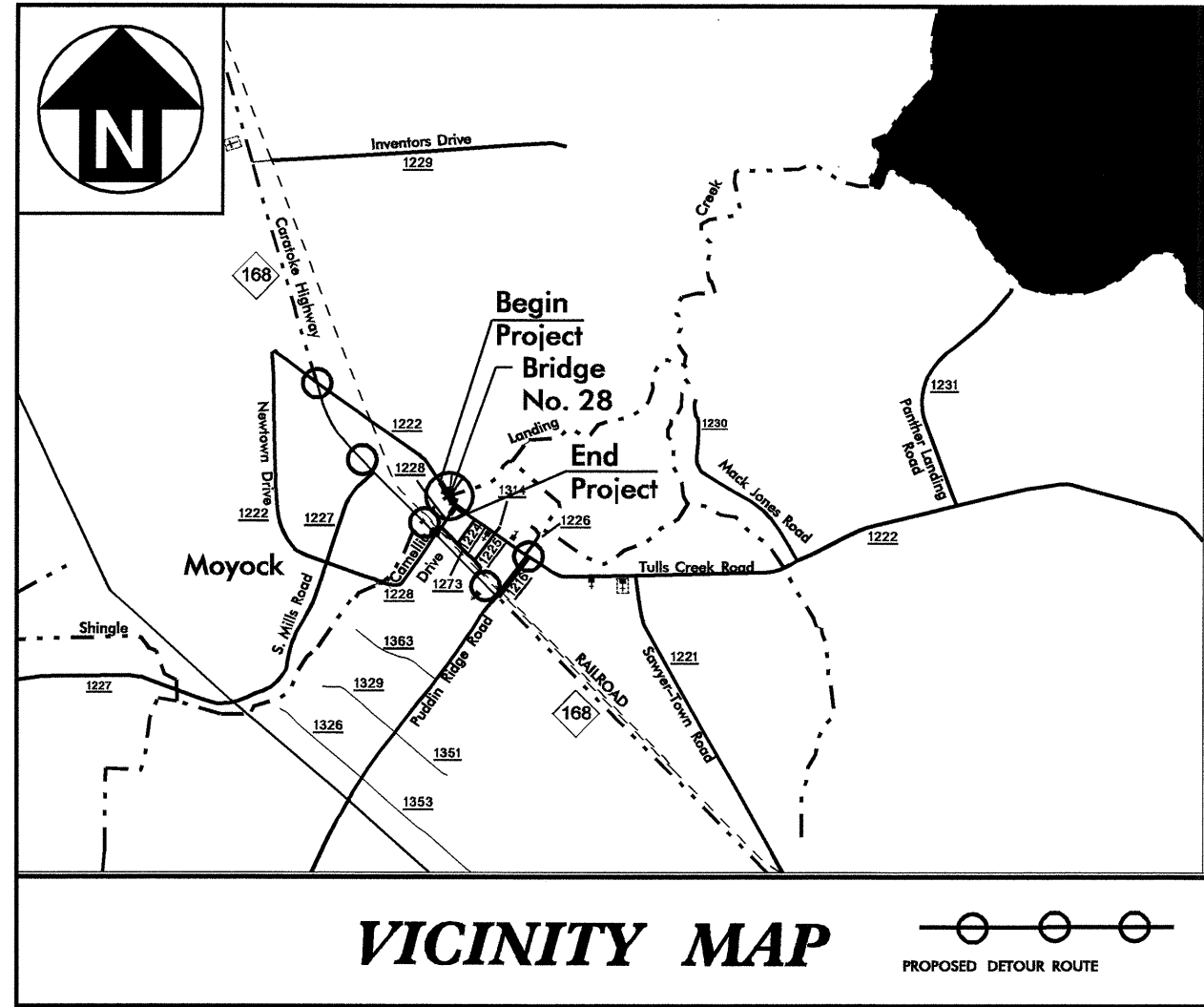


09/08/99

See Sheet 1-A For Index of Sheets  
See Sheet 1-B For Conventional Symbols

T.I.P. NO.	SHEET NO.
B-4094	UO-1

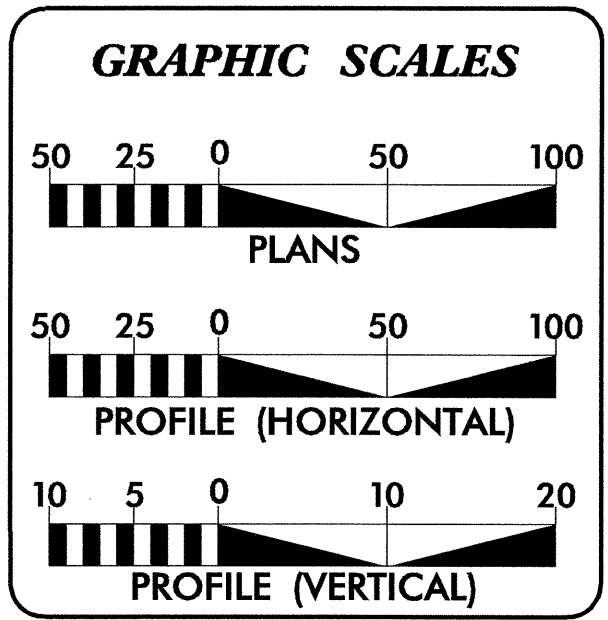
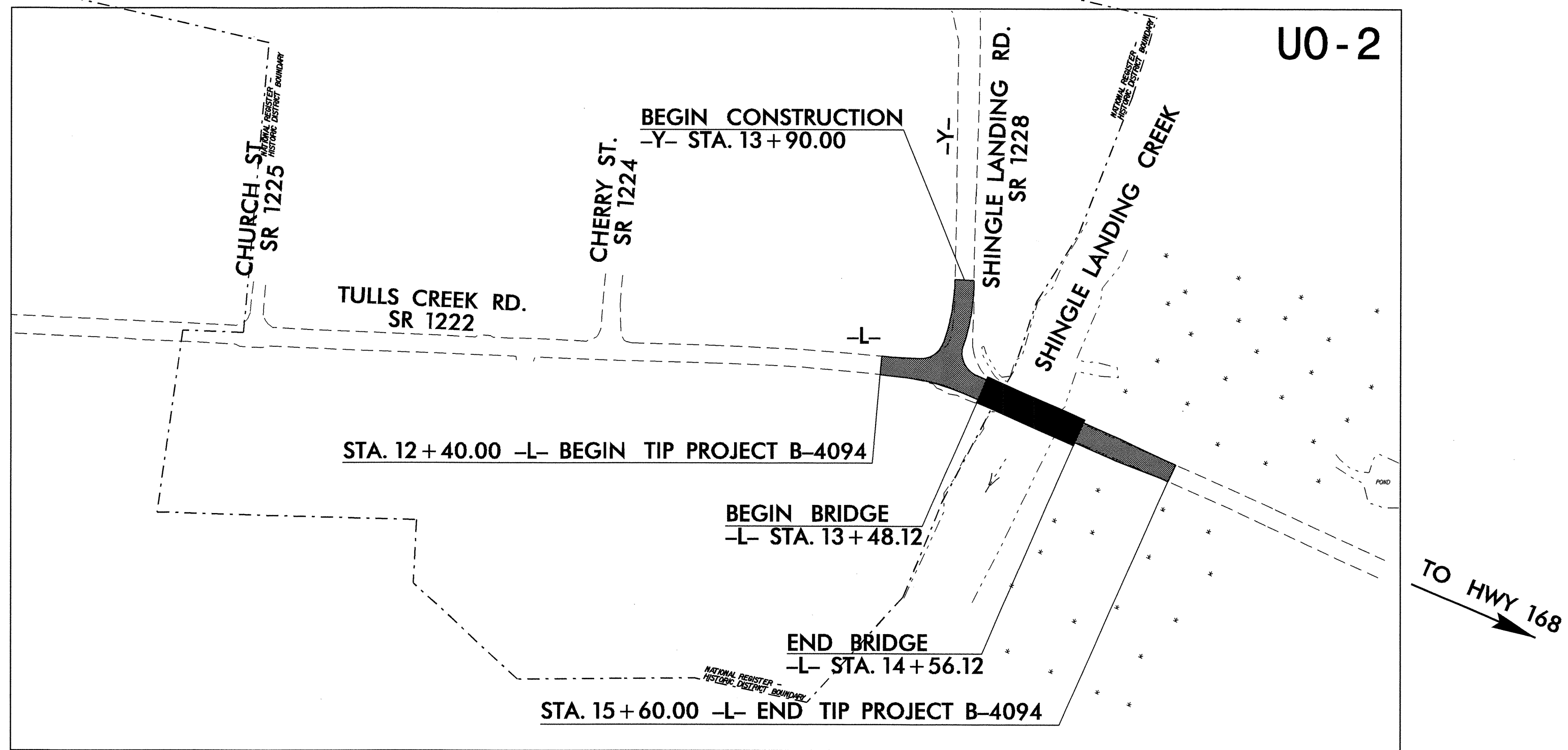
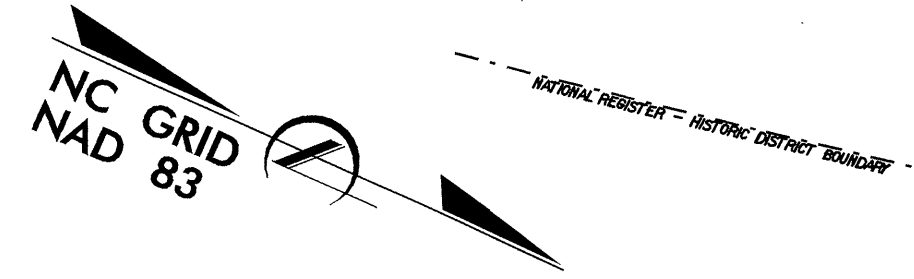
TIP PROJECT: B-4094



STATE OF NORTH CAROLINA  
DIVISION OF HIGHWAYS

**UTILITY BY OTHERS PLANS  
CURRITUCK COUNTY**

LOCATION: BRIDGE NO. 28 OVER SHINGLE LANDING CREEK ON SR 1222  
TYPE OF WORK: UTILITY RELOCATION

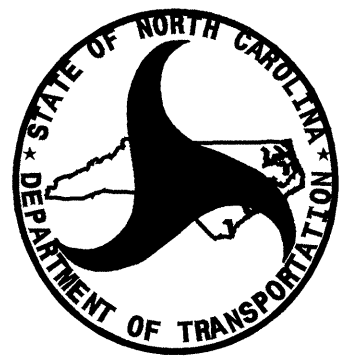


**INDEX OF SHEETS**

SHEET NO.	DESCRIPTION
UO-1	TITLE SHEET
UO-2	UTILITY BY OTHERS PLAN SHEETS

**UTILITY OWNERS ON PROJECT**

- (1) Dominion North Carolina Power
- (2) Embarq
- (3) Mediacom
- (4) Currituck County Water
- (5) Currituck County Sewer



PREPARED IN THE OFFICE OF:  
**DIVISION OF HIGHWAYS  
DESIGN SERVICES  
UTILITY SECTION**

1591 MAIL SERVICES CENTER  
RALEIGH NC 27699-1591  
PHONE (919) 250-4128  
FAX (919) 250-4119

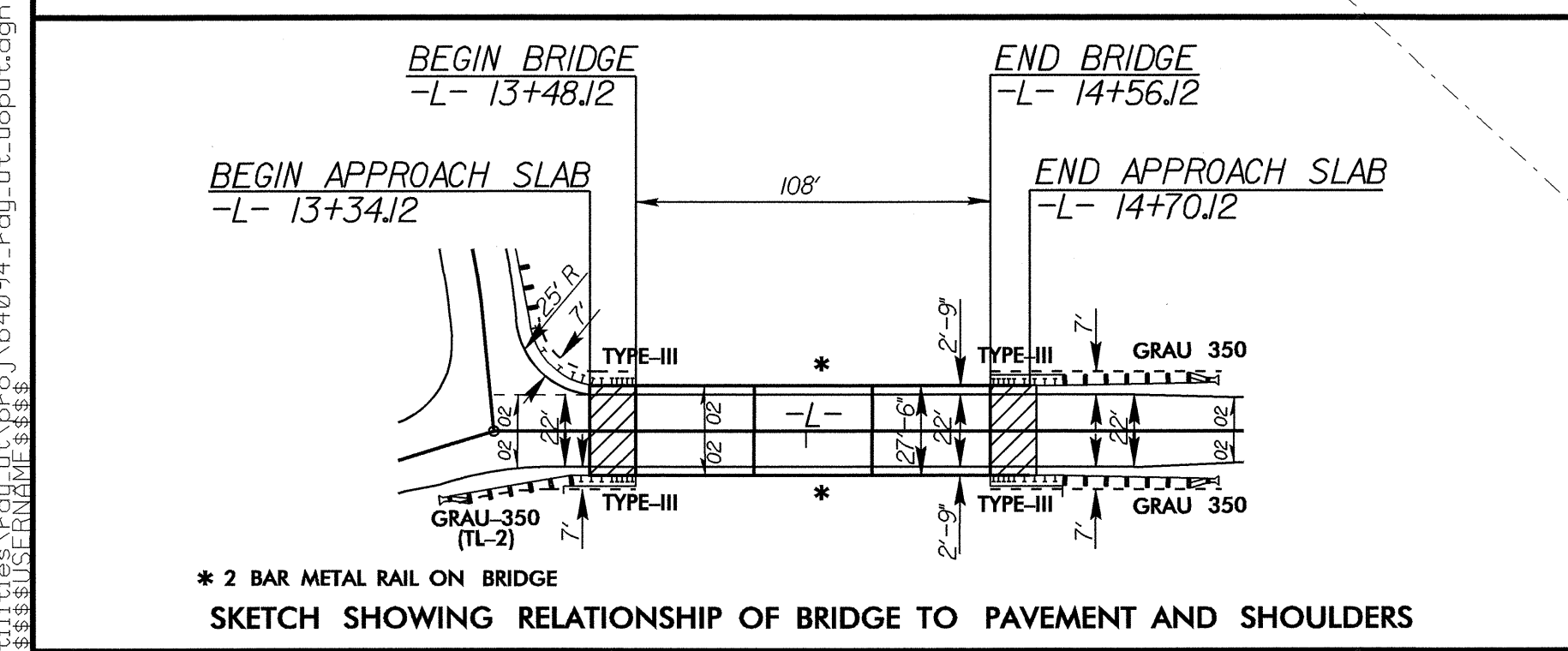
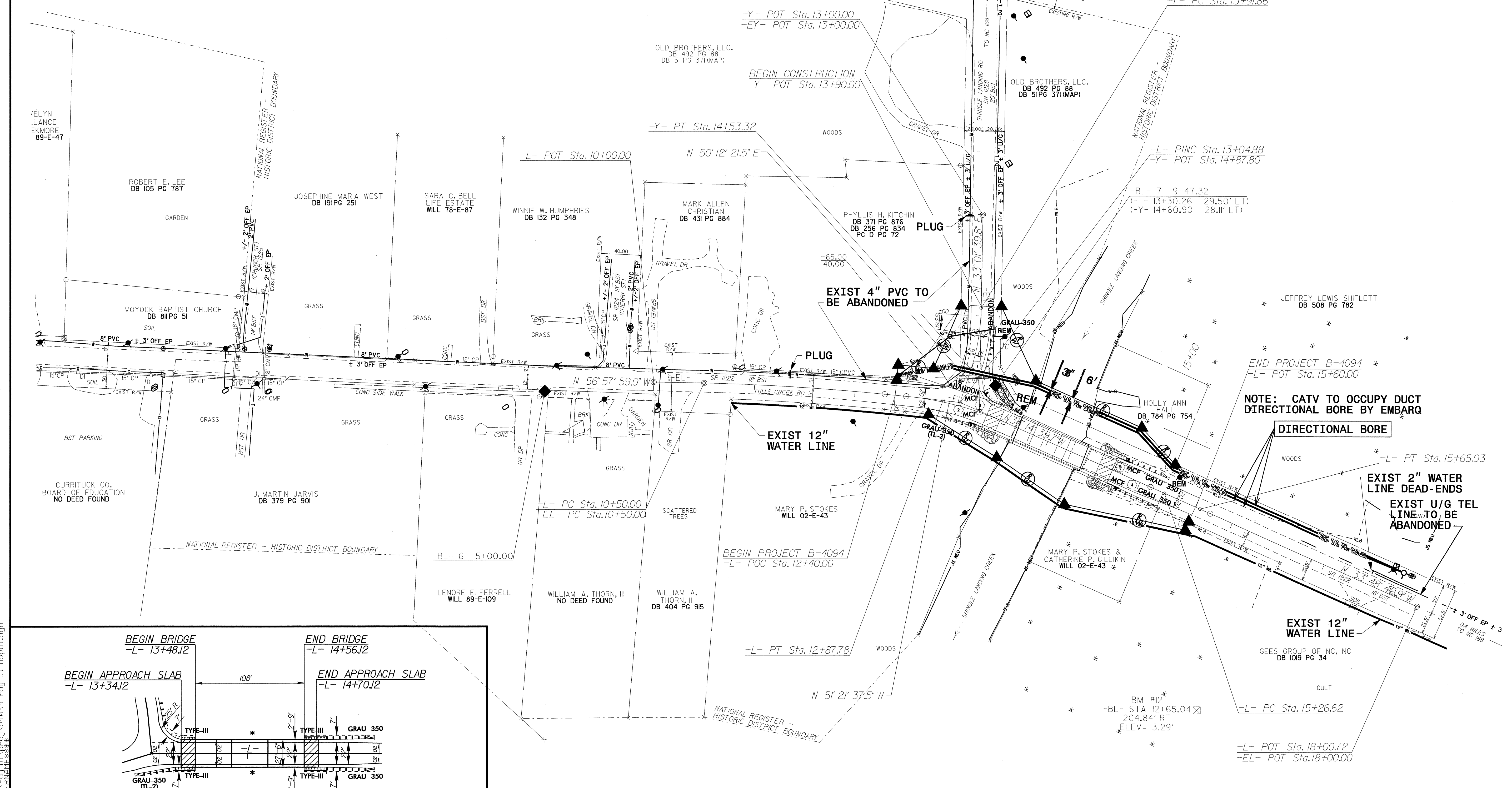
**Roger Worthington, P.E.** UTILITIES SECTION ENGINEER  
**Corey Bousquet, P.E.** UTILITIES SQUAD LEADER PROJECT ENGINEER  
**Stephanie Athey** UTILITIES PROJECT DESIGNER

02-DEC-2008 09:00  
F:\utilities\rdy\ut\proj\b4094\_rdy\_uo.tsh.dgn  
\$\$\$\$\$USERNAME\$\$\$\$\$

UTILITIES BY OTHERS

NOTE:  
ALL PROPOSED UTILITY WORK  
SHOWN ON THIS SHEET WILL  
BE DONE BY OTHERS

-L-	-Y-	-Y-
PI Sta 11+68.97	PI Sta 15+45.83	PI Sta 14+22.83
$\Delta = 5^{\circ}04'21.5"$ (RT)	$\Delta = 0^{\circ}25'56.8"$ (RT)	$\Delta = 17^{\circ}10'41.7"$ (RT)
D = 2'08'00.0"	D = 1'07'32.4"	D = 27'56'57.0"
L = 237.78'	L = 38.42'	L = 61.46'
T = 118.97'	T = 19.21'	T = 30.96'
R = 2,685.74'	R = 5,090.00'	R = 205.00'
SE = NC	SE = NC	SE = 04
DS = 35 mph	DS = 35 mph	DS = 25 mph



5/14/99  
06-JAN-2009 11:32  
r:\utilities\proj\4094\_rdy\_ut\_uoput.dgn