

TIP PROJECT: B-4019

STATE OF NORTH CAROLINA
DIVISION OF HIGHWAYS

PLAN FOR PROPOSED
HIGHWAY EROSION CONTROL

BEAUFORT COUNTY

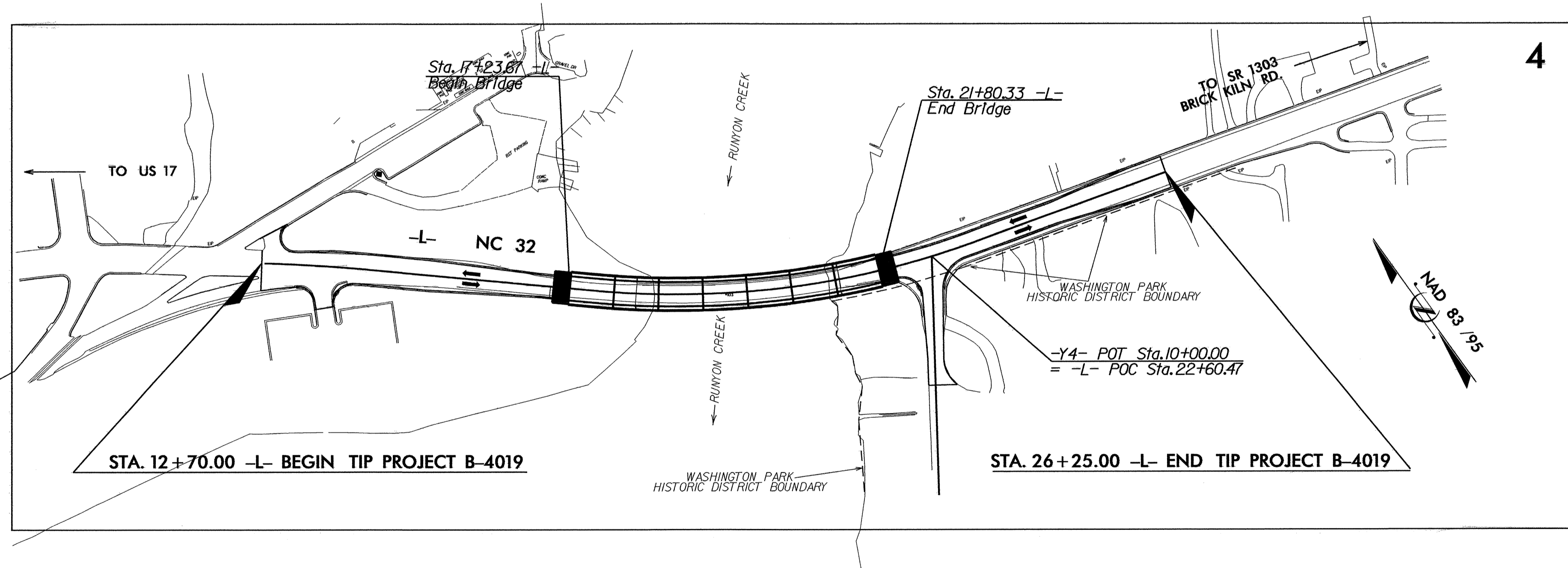
**LOCATION: BRIDGE NO. 103 OVER RUNYON CREEK
ON NC 32 IN WASHINGTON**

TYPE OF WORK: GRADING, DRAINAGE, PAVING AND STRUCTURE

| STATE | STATE PROJECT REFERENCE NO. | SHEET NO. | TOTAL SHEETS |
|-----------------|-----------------------------|-------------|--------------|
| N.C. | B-4019 | EC-1 | |
| STATE PROJ. NO. | F.A. PROJ. NO. | DESCRIPTION | |
| | | | |
| | | | |
| | | | |
| | | | |
| | | | |

EROSION AND SEDIMENT CONTROL MEASURES

| Std. # | Description | Symbol |
|---------|--------------------------------------|-------------|
| 1630.03 | Temporary Silt Ditch | TD |
| 1630.05 | Temporary Diversion | TD |
| 1605.01 | Temporary Silt Fence | III III III |
| 1606.01 | Special Sediment Control Fence | III III III |
| 1622.01 | Temporary Berms and Slope Drains | — T — |
| 1630.01 | Riser Basin | ⊙ |
| | Silt Basin Type B | ▨ |
| 1633.01 | Temporary Rock Silt Check Type-A | ▨ |
| | Temporary Rock Silt Check Type-B | ▶ |
| | Wattle | ⌒ |
| 1634.01 | Temporary Rock Sediment Dam Type-A | ▨ |
| 1634.02 | Temporary Rock Sediment Dam Type-B | ▨ |
| 1635.01 | Rock Pipe Inlet Sediment Trap Type-A | ⊙ |
| 1635.02 | Rock Pipe Inlet Sediment Trap Type-B | ⊙ |
| 1630.04 | Stilling Basin | ▭ |
| 1630.06 | Special Stilling Basin | ▭ |
| | Rock Inlet Sediment Trap: | |
| 1632.01 | Type A | A |
| 1632.02 | Type B | B |
| 1632.03 | Type C | C |
| | Skimmer Basin | ▭ |
| | Tiered Skimmer Basin | ▭ |
| | Infiltration Basin | ▭ |



**THIS PROJECT CONTAINS
EROSION CONTROL PLANS
FOR CLEARING AND
GRUBBING PHASE OF
CONSTRUCTION.**

**THIS PROJECT HAS
BEEN DESIGNED TO
SENSITIVE WATERSHED
STANDARDS.**

**ENVIRONMENTALLY
SENSITIVE AREA(S) EXIST
ON THIS PROJECT**
*Refer To E. C. Special Provisions
for Special Considerations.*

GRAPHIC SCALE

0
PLANS

0
PROFILE (HORIZONTAL)

0
PROFILE (VERTICAL)

ROADSIDE ENVIRONMENTAL UNIT
DIVISION OF HIGHWAYS
STATE OF NORTH CAROLINA

Prepared In the Office of:
ROADSIDE ENVIRONMENTAL UNIT
1 South Wilmington St.
Raleigh, NC 27611

2006 STANDARD SPECIFICATIONS

Roadway Standard Drawings

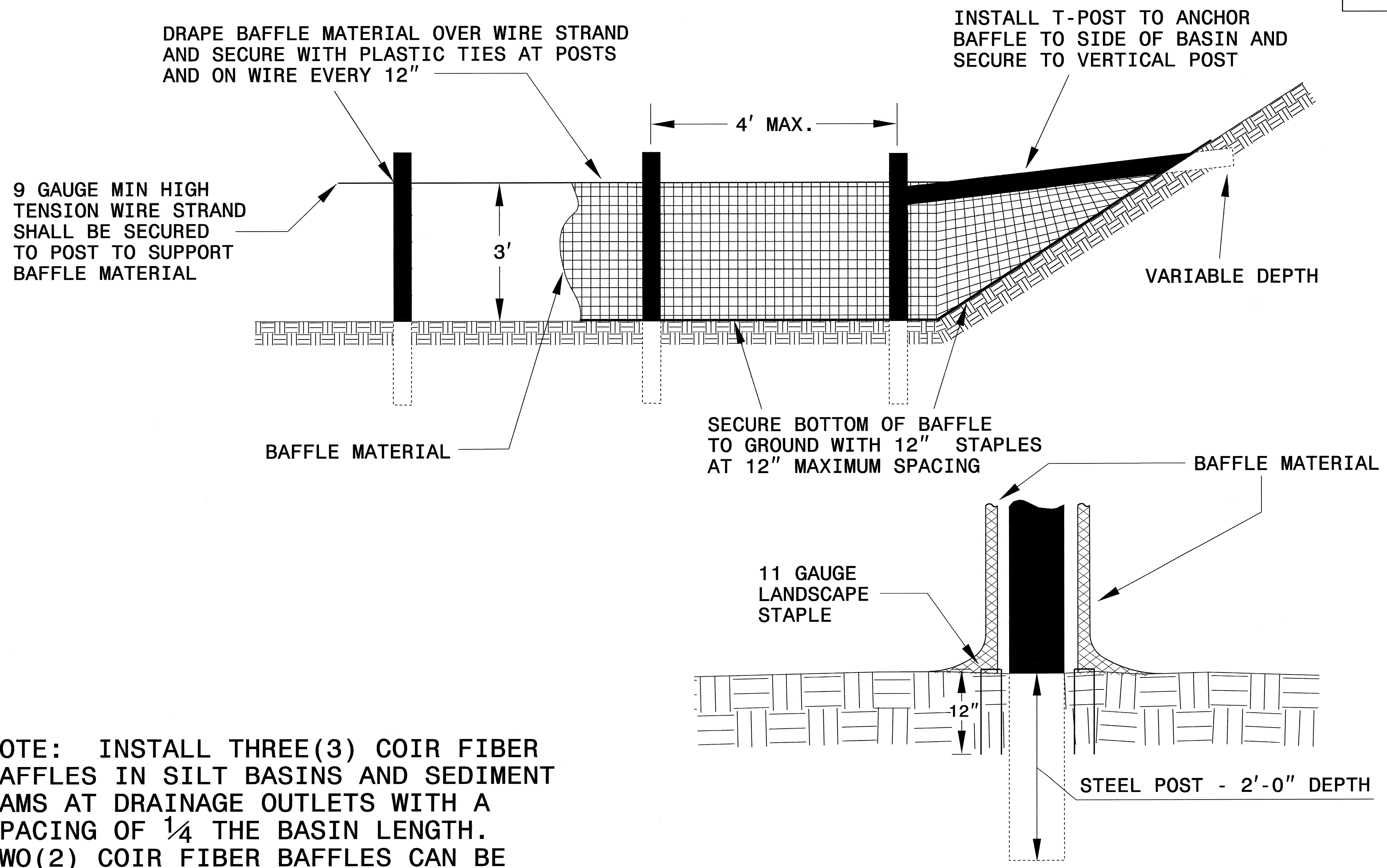
The following roadway english standards as appear in "Roadway Standard Drawings"- Roadway Design Unit - N. C. Department of Transportation - Raleigh, N. C., dated July 18, 2006 and the latest revision thereto are applicable to this project and by reference hereby are considered a part of these plans.

| | |
|--|--|
| 1605.01 Temporary Silt Fence | 1632.03 Rock Inlet Sediment Trap Type C |
| 1606.01 Special Sediment Control Fence | 1633.01 Temporary Rock Silt Check Type A |
| 1607.01 Gravel Construction Entrance | |
| 1622.01 Temporary Berms and Slope Drains | |

13-NOV-2008 11:21
asatt:ngp_mcherry:\work\environmental\asatt\13-4019_rdy_tsh.dgn

| | |
|-------------------------|---------------------|
| PROJECT REFERENCE NO. | SHEET NO. |
| B-4019 | EC-2 |
| RW SHEET NO. | |
| ROADWAY DESIGN ENGINEER | HYDRAULICS ENGINEER |

COIR FIBER BAFFLE DETAIL

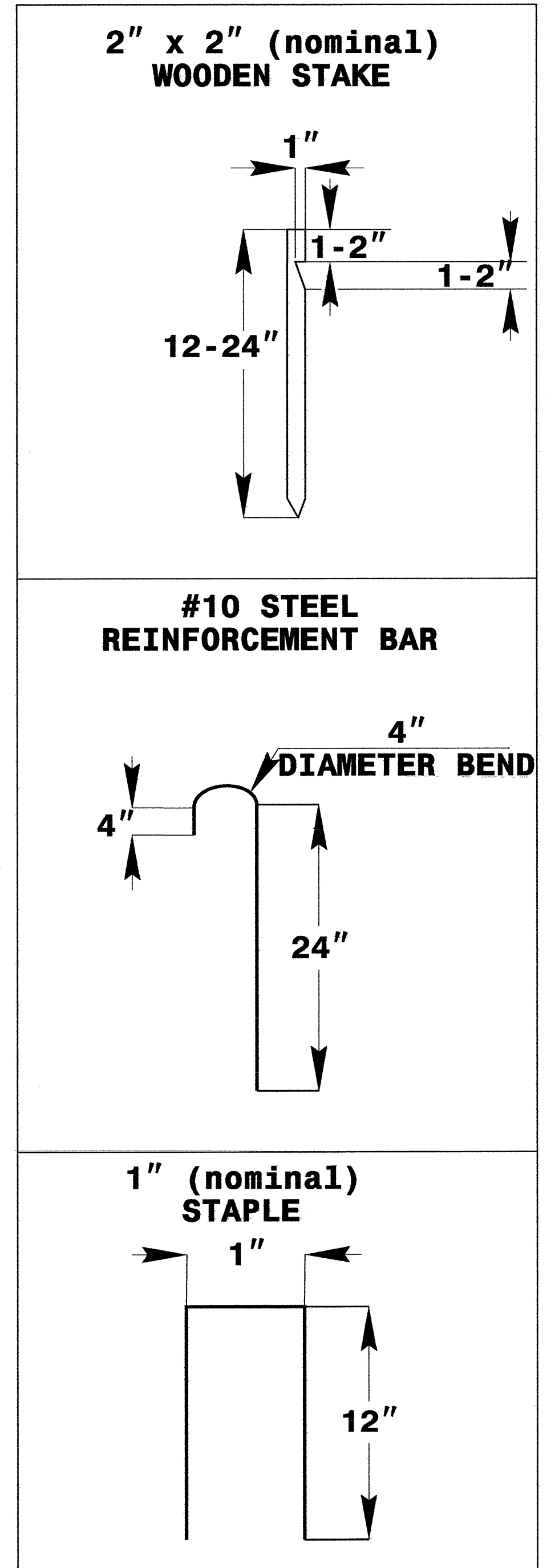
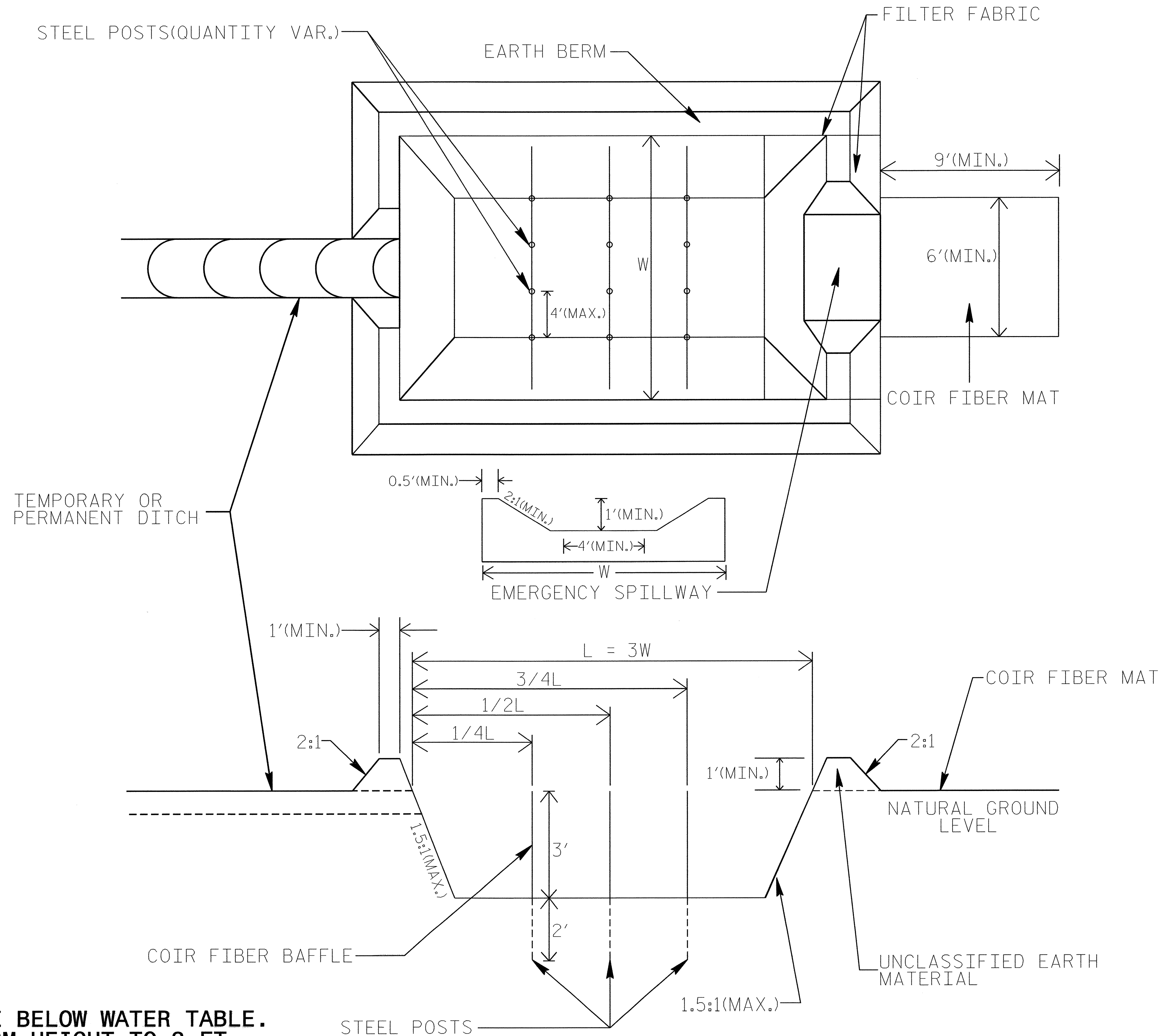


NOTE: INSTALL THREE(3) COIR FIBER BAFFLES IN SILT BASINS AND SEDIMENT DAMS AT DRAINAGE OUTLETS WITH A SPACING OF $\frac{1}{4}$ THE BASIN LENGTH. TWO(2) COIR FIBER BAFFLES CAN BE INSTALLED IN SILT BASINS AND DAMS LESS THAN 20 FT. IN LENGTH WITH A SPACING OF $\frac{1}{3}$ THE BASIN LENGTH.

BAFFLE MATERIAL SHALL BE SECURED TO THE BOTTOM AND SIDES OF BASIN USING 12" LANDSCAPE STAPLES

INFILTRATION BASIN WITH BAFFLES DETAIL

| | |
|---------------------------------|---------------------|
| PROJECT REFERENCE NO. B-4019 | SHEET NO. EC-2A |
| RW SHEET NO. | |
| ROADWAY DESIGN ENGINEER | HYDRAULICS ENGINEER |



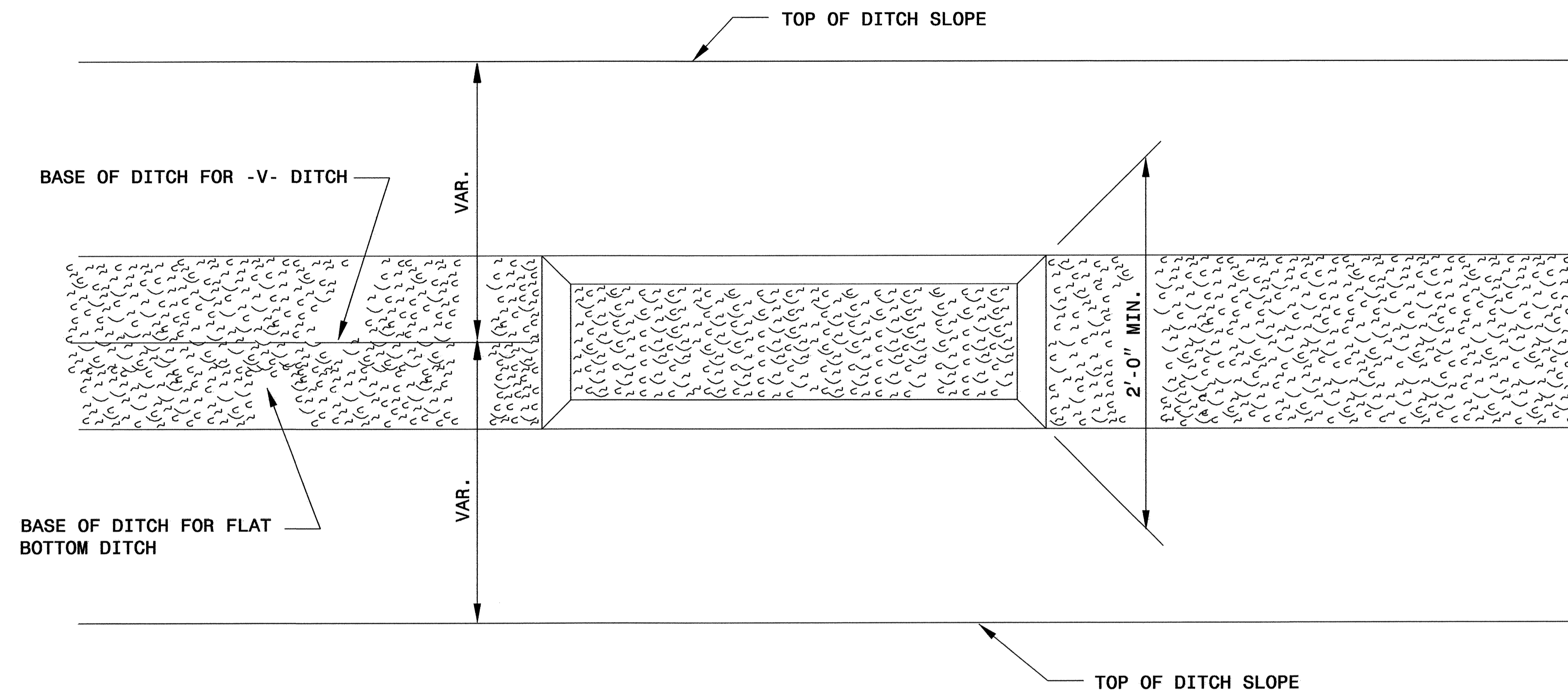
COIR FIBER MAT ANCHOR OPTIONS

NOTES:

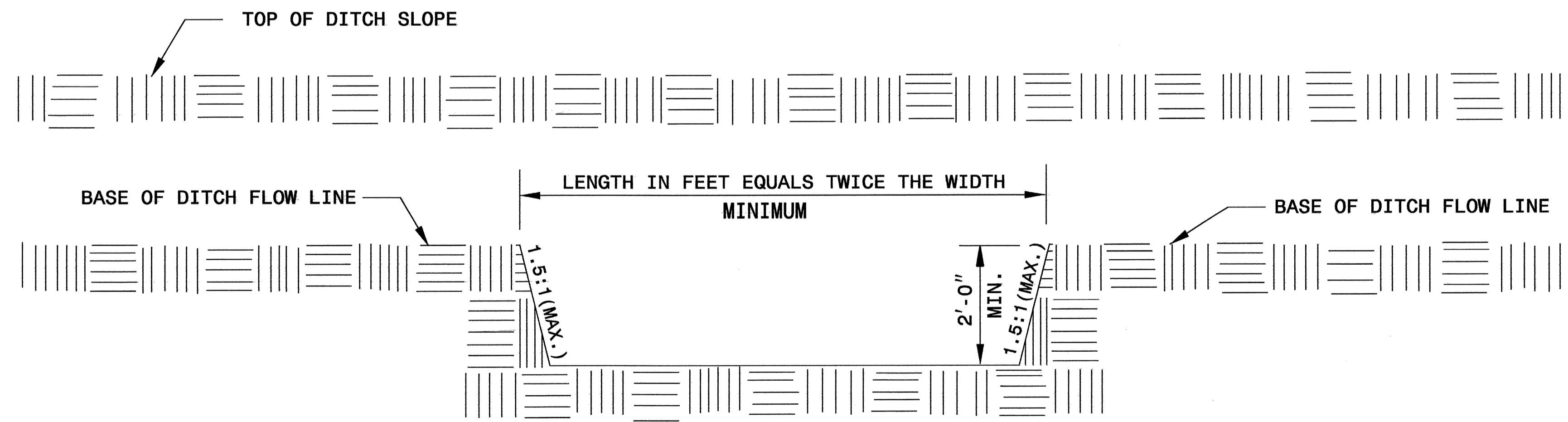
1. DO NOT EXCAVATE BELOW WATER TABLE.
2. LIMIT EARTH BERM HEIGHT TO 3 FT.
3. AVOID COMPACTING BOTTOM OF BASIN.
4. THE MINIMUM BASIN WIDTH SHALL BE 9 FT.
5. DETERMINE EMERGENCY SPILLWAY LENGTH (FT.) USING $Q/0.8$, WHERE Q IS FLOW RATE INTO BASIN.

| | |
|--|---------------------------|
| PROJECT REFERENCE NO. <i>B-4019</i> | SHEET NO. <i>EC-2B</i> |
| RW SHEET NO. | |
| ROADWAY DESIGN ENGINEER | HYDRAULICS ENGINEER |

SILT BASIN 'B' DETAIL



PLAN



ELEVATION

