

T.I.P. NO.	SHEET NO.
B-3684	UO-1

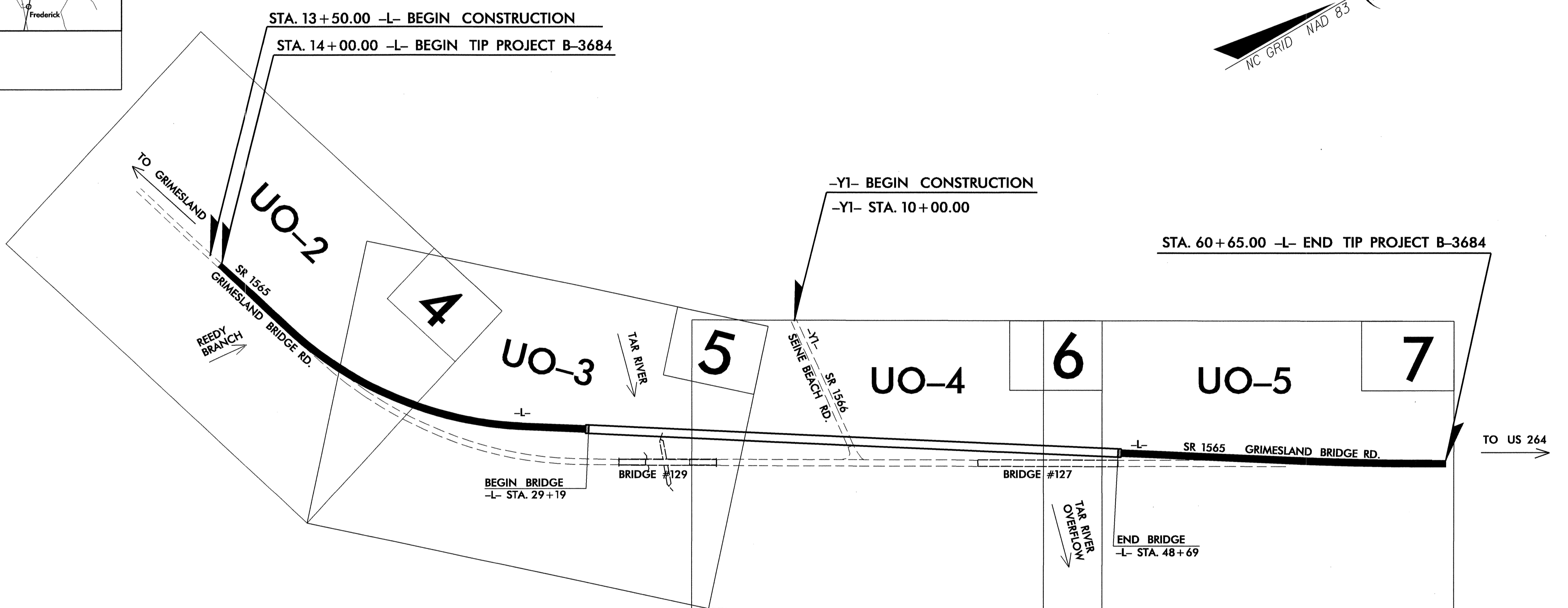
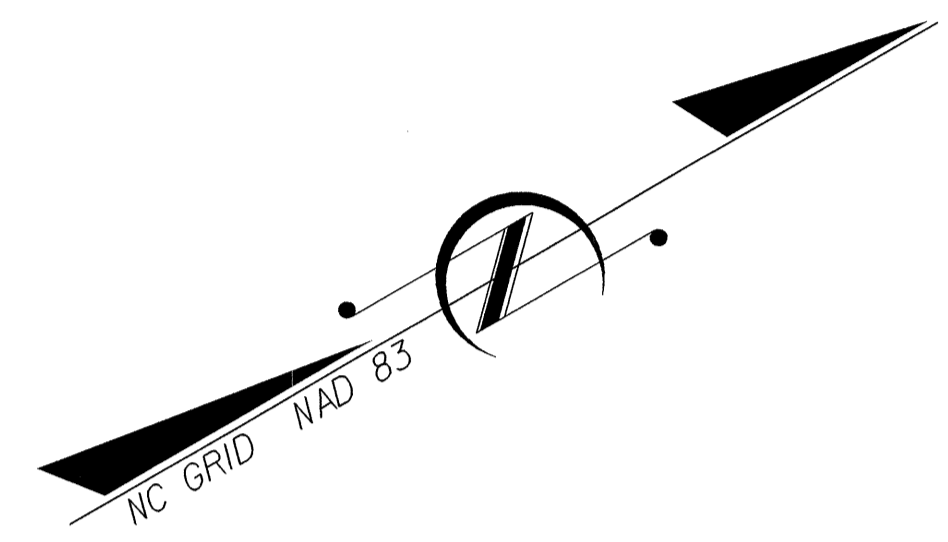
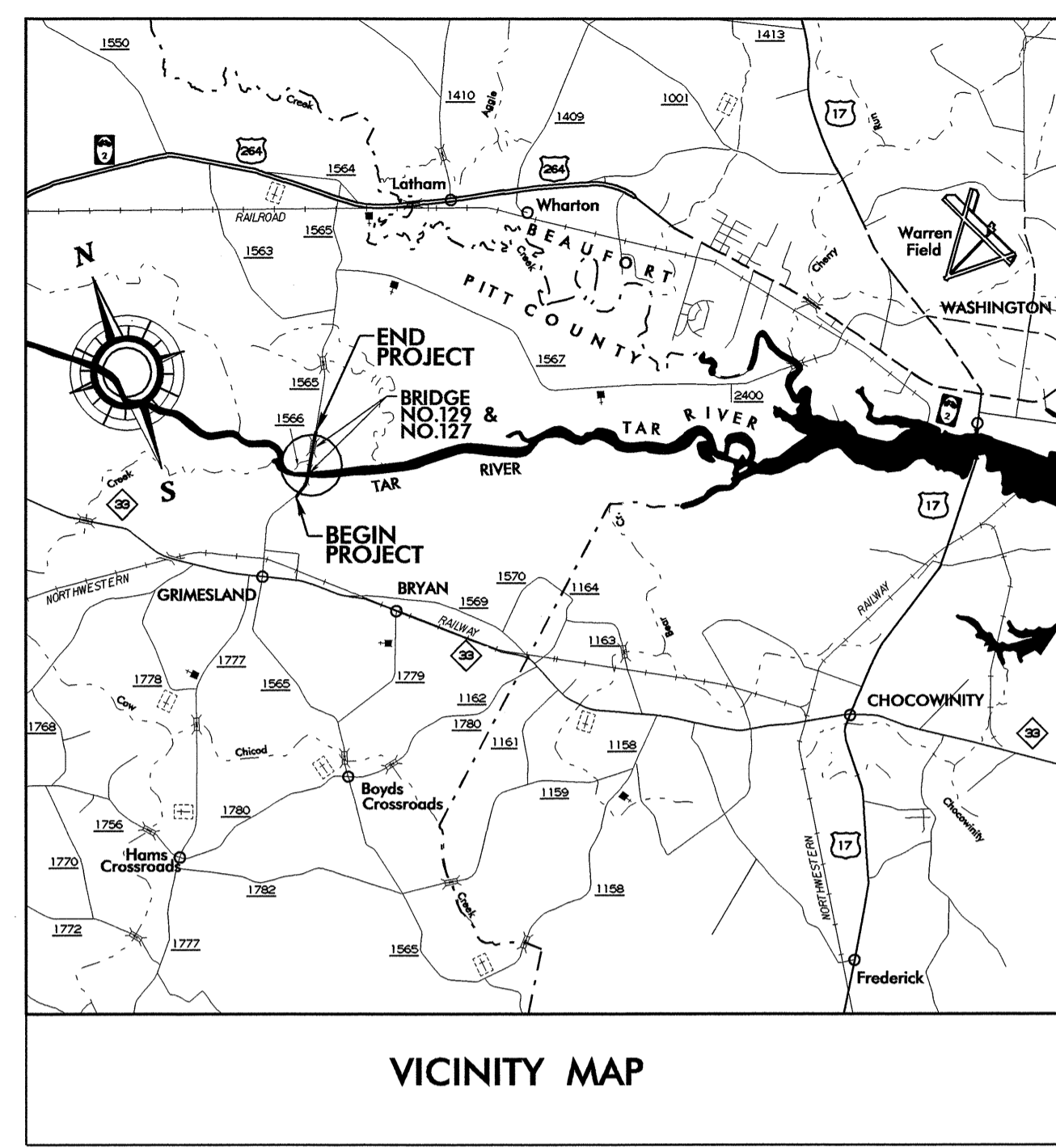
See Sheet 1-A For Index of Sheets

STATE OF NORTH CAROLINA
DIVISION OF HIGHWAYS

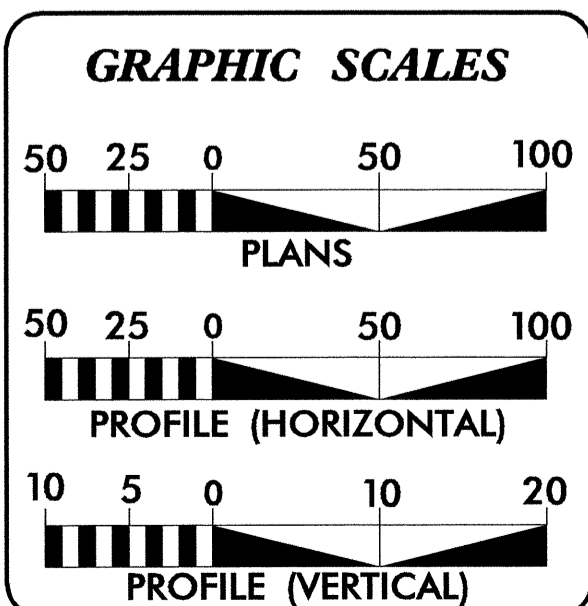
**UTILITY BY OTHERS PLANS
PITT COUNTY**

**LOCATION: BRIDGE NO. 129 OVER TAR RIVER AND
BRIDGE NO. 127 OVER TAR RIVER OVERFLOW
ON SR 1565 (GRIMESLAND BRIDGE RD.)**

TYPE OF WORK: UTILITIES RELOCATION



CLEARING ON THIS PROJECT SHALL BE ESTABLISHED BY METHOD ____.
THIS PROJECT IS NOT WITHIN THE MUNICIPAL BOUNDARIES OF GRIMESLAND.

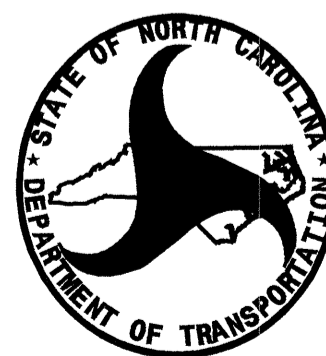


INDEX OF SHEETS

SHEET NO.	DESCRIPTION
UO-1	TITLE SHEET
UO-2 THRU UO-5	UTILITY BY OTHERS PLAN SHEETS

UTILITY OWNERS ON PROJECT

- EMBARQ
- EDGEcombe-MARTIN EMC
- PROGRESS ENERGY



PREPARED IN THE OFFICE OF:
**DIVISION OF HIGHWAYS
DESIGN SERVICES
UTILITY SECTION**

1591 MAIL SERVICES CENTER
RALEIGH NC 27699-1591
PHONE (919) 250-4128
FAX (919) 250-4119

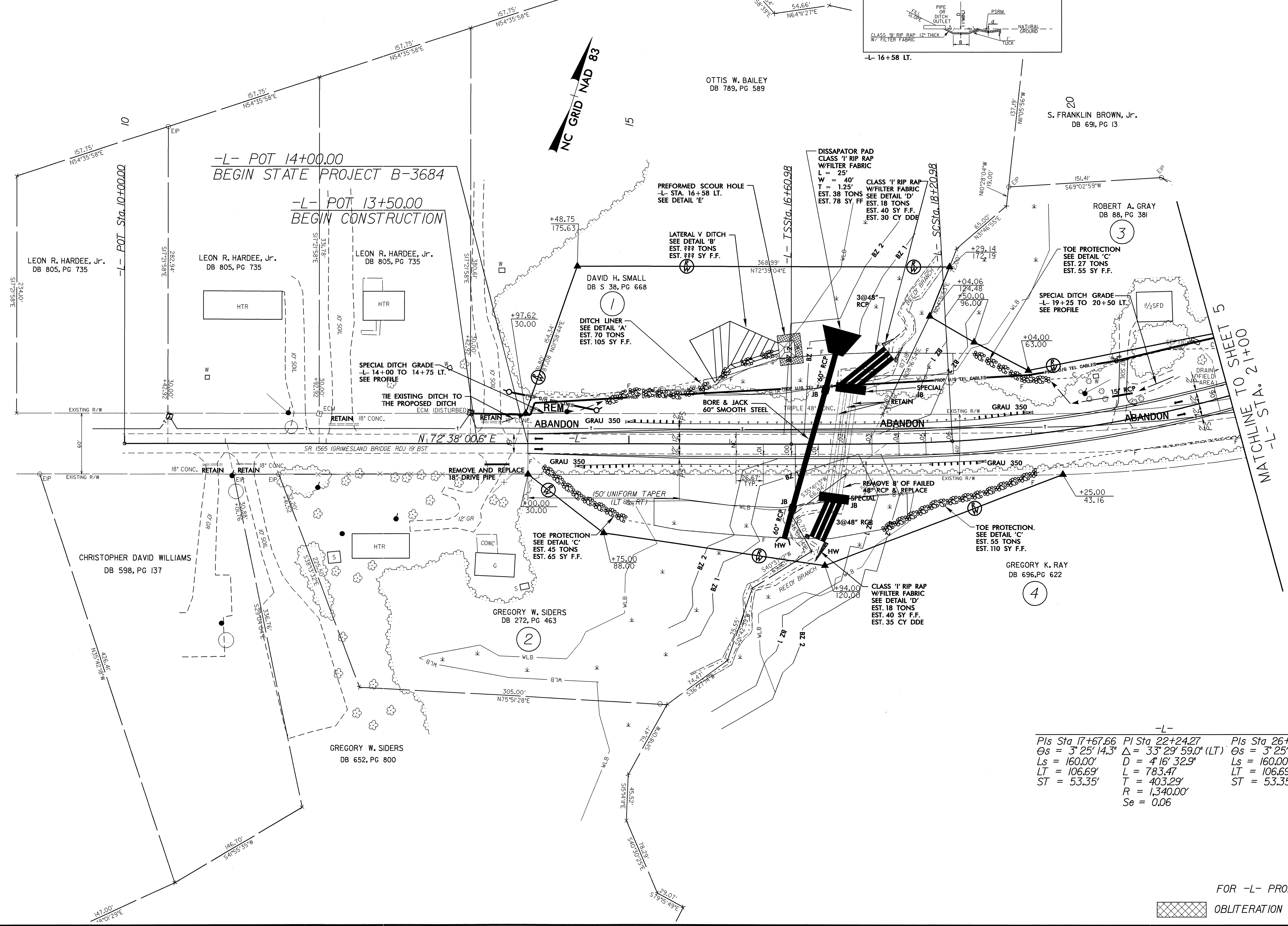
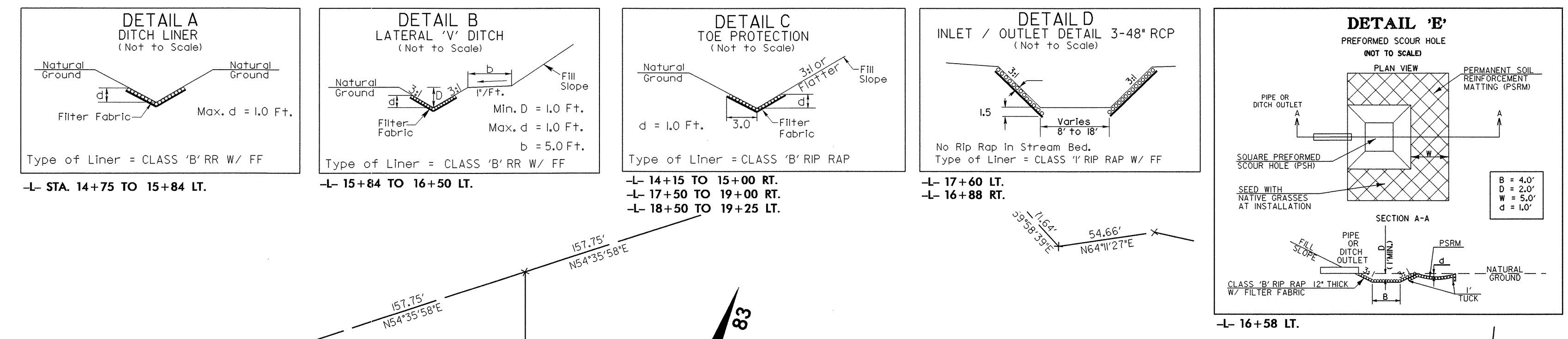
Roger Worthington, P.E. UTILITIES SECTION ENGINEER
Corey Bousquest, P.E. UTILITIES SQUAD LEADER PROJECT ENGINEER
Britt McCurry UTILITIES PROJECT DESIGNER

TIP PROJECT: B-3684

03-JUN-2008 14:00
r:\utilities\rdy\ut\proj\b3684\ut_uo_1.fsh.dgn
\$\$\$\$\$SERNAME\$\$\$\$\$

UTILITIES BY OTHERS

NOTE:
ALL PROPOSED UTILITY WORK
SHOWN ON THIS SHEET WILL
BE DONE BY OTHERS



-L-

Pls Sta 17+67.66	PI Sta 22+24.27	Pls Sta 26+57.80
Os = 3' 25' 14.3"	Δ = 33' 29' 59.0" (LT)	Os = 3' 25' 14.3"
Ls = 160.00'	D = 4' 16' 32.9"	Ls = 160.00'
LT = 106.69'	L = 783.47'	LT = 106.69'
ST = 53.35'	T = 403.29'	ST = 53.35'
	R = 1,340.00'	
	Se = 0.06	

FOR -L- PROFILE SEE SHEET 8

5/14/99

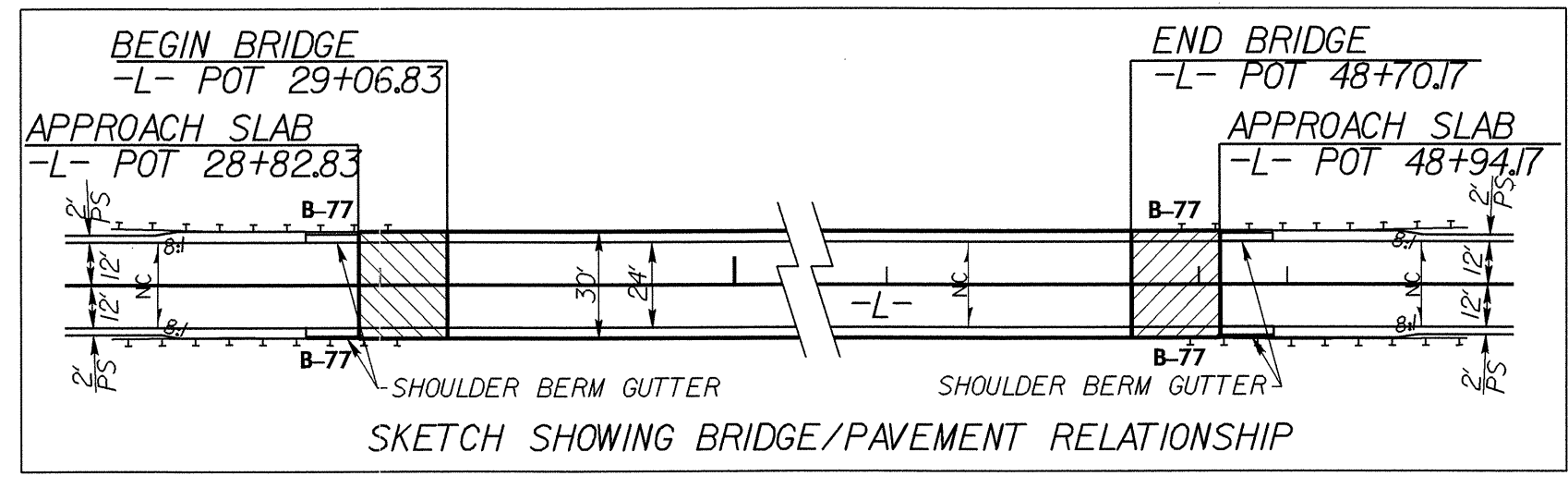
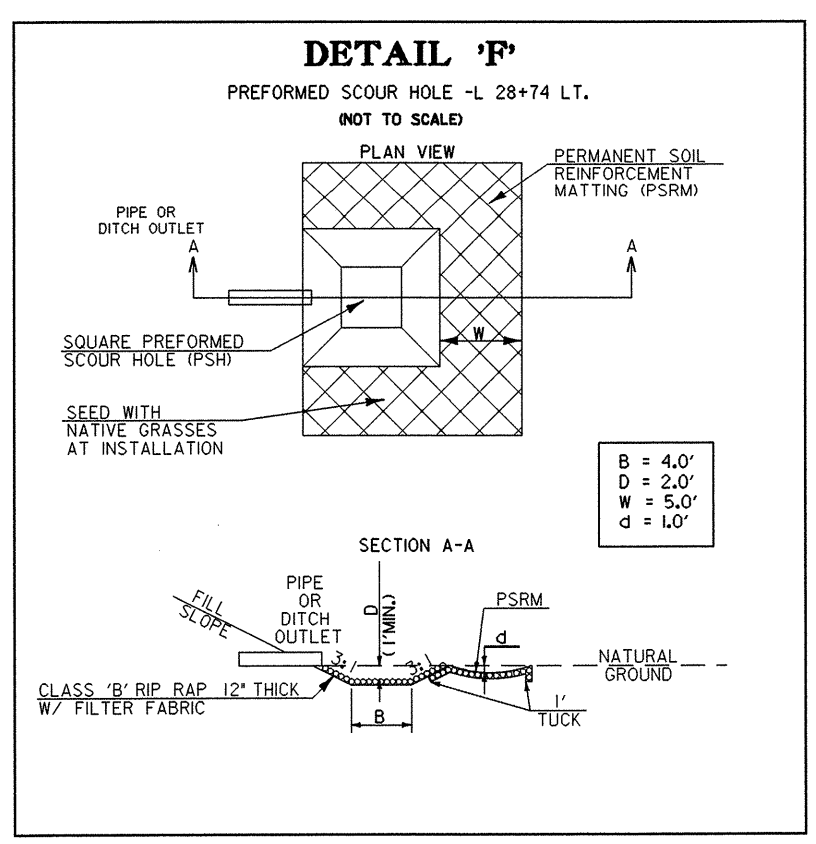
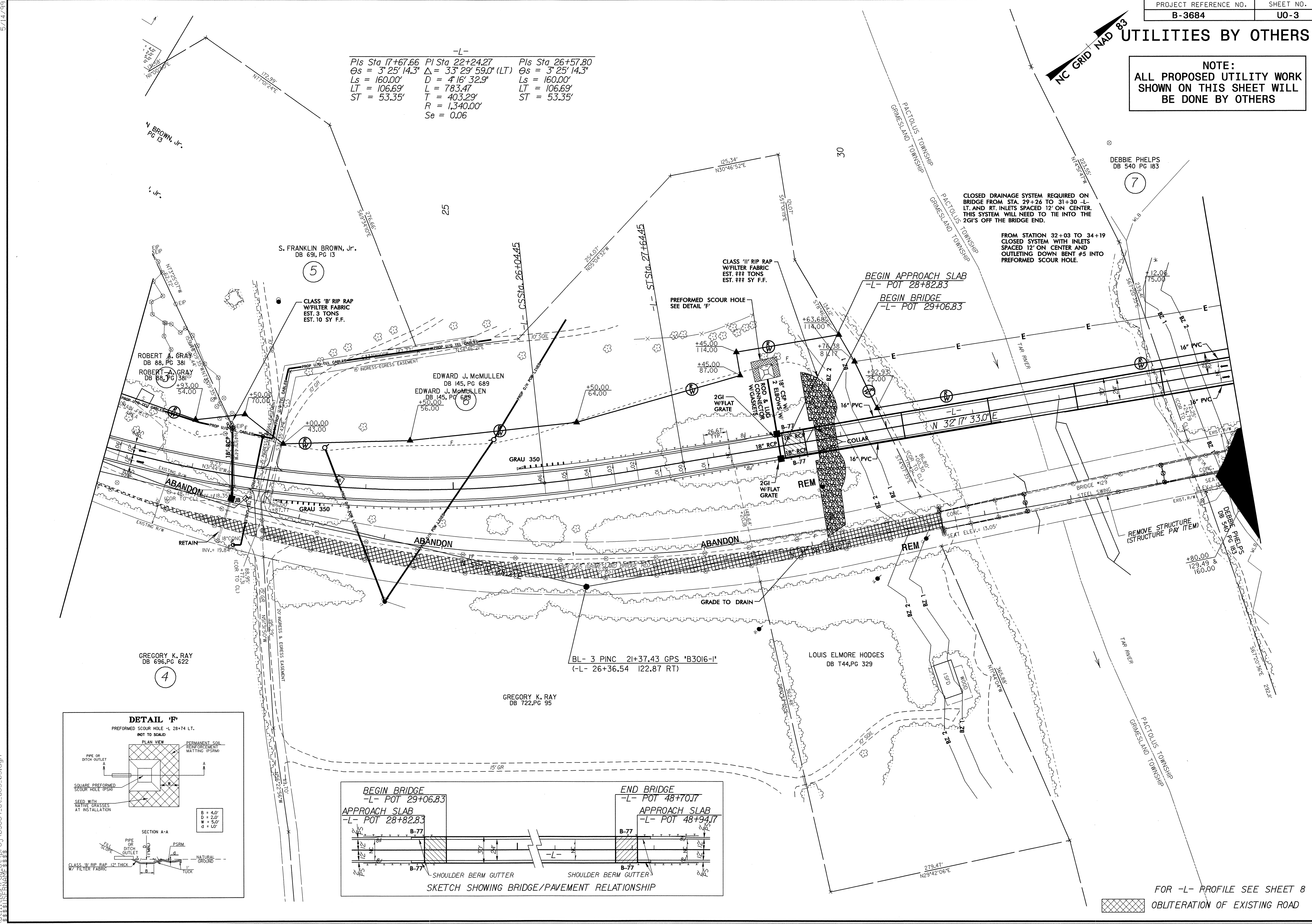
22-MAY-2008 13:11
F:\Utilities\B3684\B3684-ut-uc2_04.dgn

UTILITIES BY OTHERS

NOTE:
ALL PROPOSED UTILITY WORK SHOWN ON THIS SHEET WILL BE DONE BY OTHERS

-L-

Pls Sta 17+67.66	PI Sta 22+24.27	Pls Sta 26+57.80
$\Theta s = 3^{\circ} 25' 14.3''$	$\Delta = 33^{\circ} 29' 59.0''$ (LT)	$\Theta s = 3^{\circ} 25' 14.3''$
$Ls = 160.00'$	$D = 4^{\circ} 16' 32.9''$	$Ls = 160.00'$
$LT = 106.69'$	$L = 783.47'$	$LT = 106.69'$
$ST = 53.35'$	$T = 403.29'$	$ST = 53.35'$
	$R = 1,340.00'$	
	$Se = 0.06$	

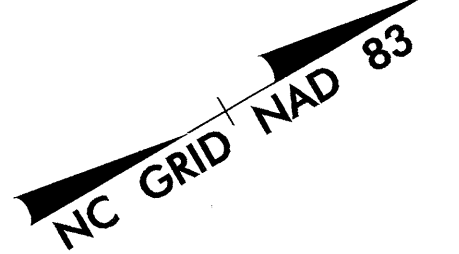


5/14/99
 22-MAY-2008 13h2
 utilities\rd\proj\B3684_ut_u03_05.dgn
 4

FOR -L- PROFILE SEE SHEET 8
 OBLITERATION OF EXISTING ROAD

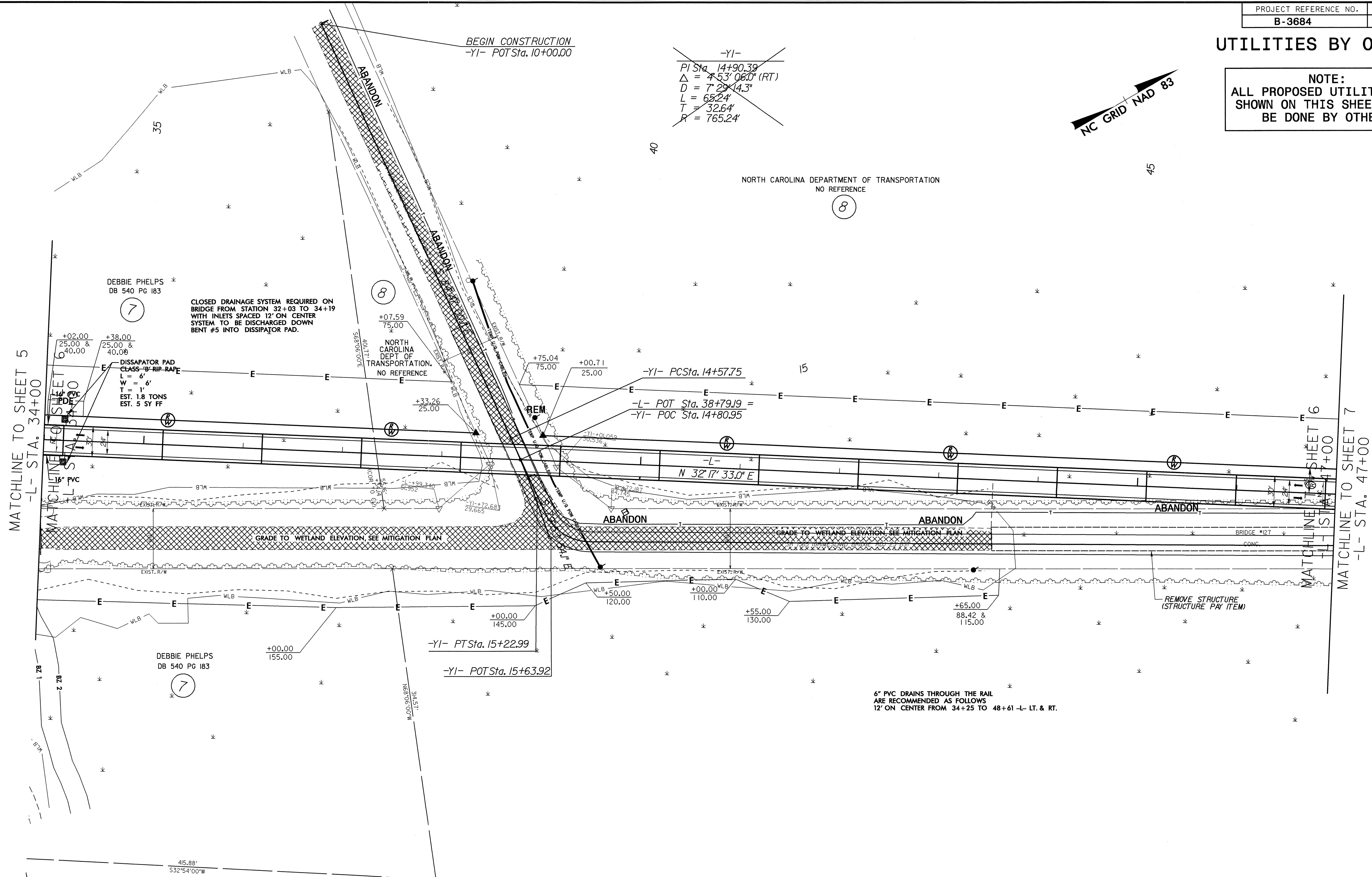
UTILITIES BY OTHERS

NOTE:
ALL PROPOSED UTILITY WORK
SHOWN ON THIS SHEET WILL
BE DONE BY OTHERS



~~-YI-~~
~~PI Sta 14+90.39~~
~~Δ = 453' 06.0" (RT)~~
~~D = 729' 14.3"~~
~~L = 652.4'~~
~~T = 32.64'~~
~~R = 765.24'~~

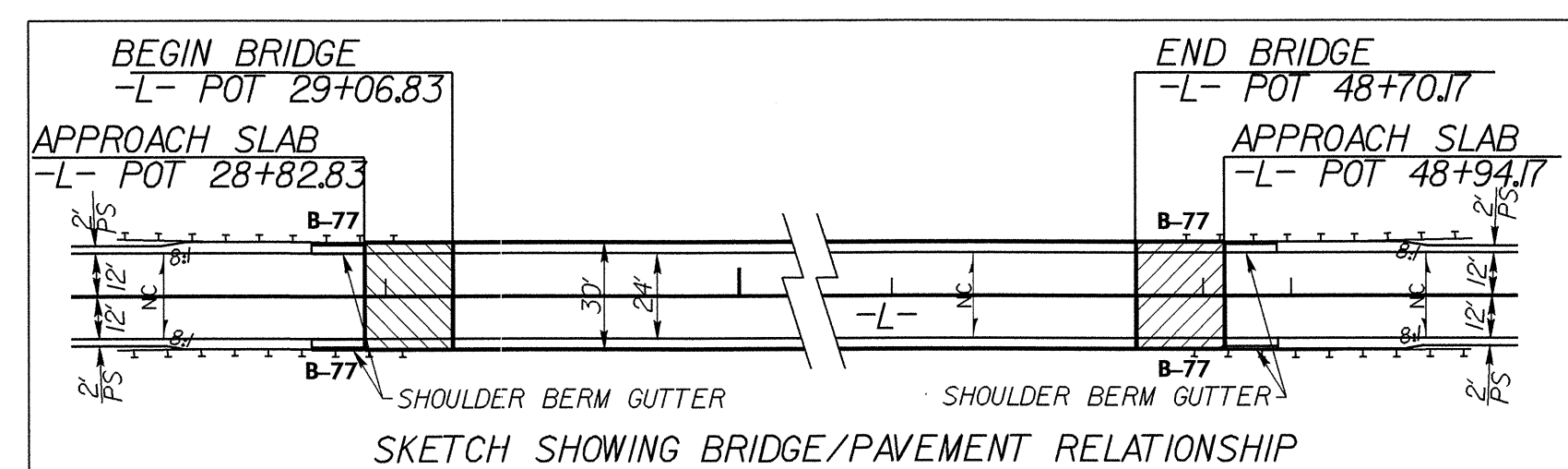
NORTH CAROLINA DEPARTMENT OF TRANSPORTATION
NO REFERENCE



MATCHLINE TO SHEET 5
-L- STA. 34+00

MATCHLINE TO SHEET 6
-L- STA. 47+00

MATCHLINE TO SHEET 7
-L- STA. 47+00



NORTH CAROLINA DEPARTMENT OF TRANSPORTATION
NO REFERENCE

8

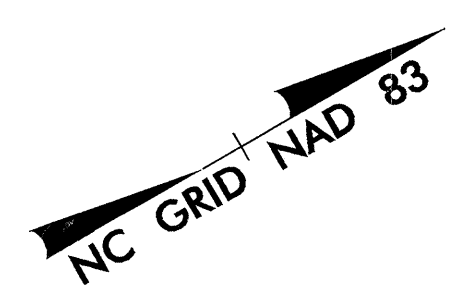
FOR -L- PROFILE SEE SHEET 8 & 9

OBLITERATION OF EXISTING ROAD

5/14/99
05-MAY-2008 09:44
\\utillib3684\proj\3684-ut.uc4_06.dgn

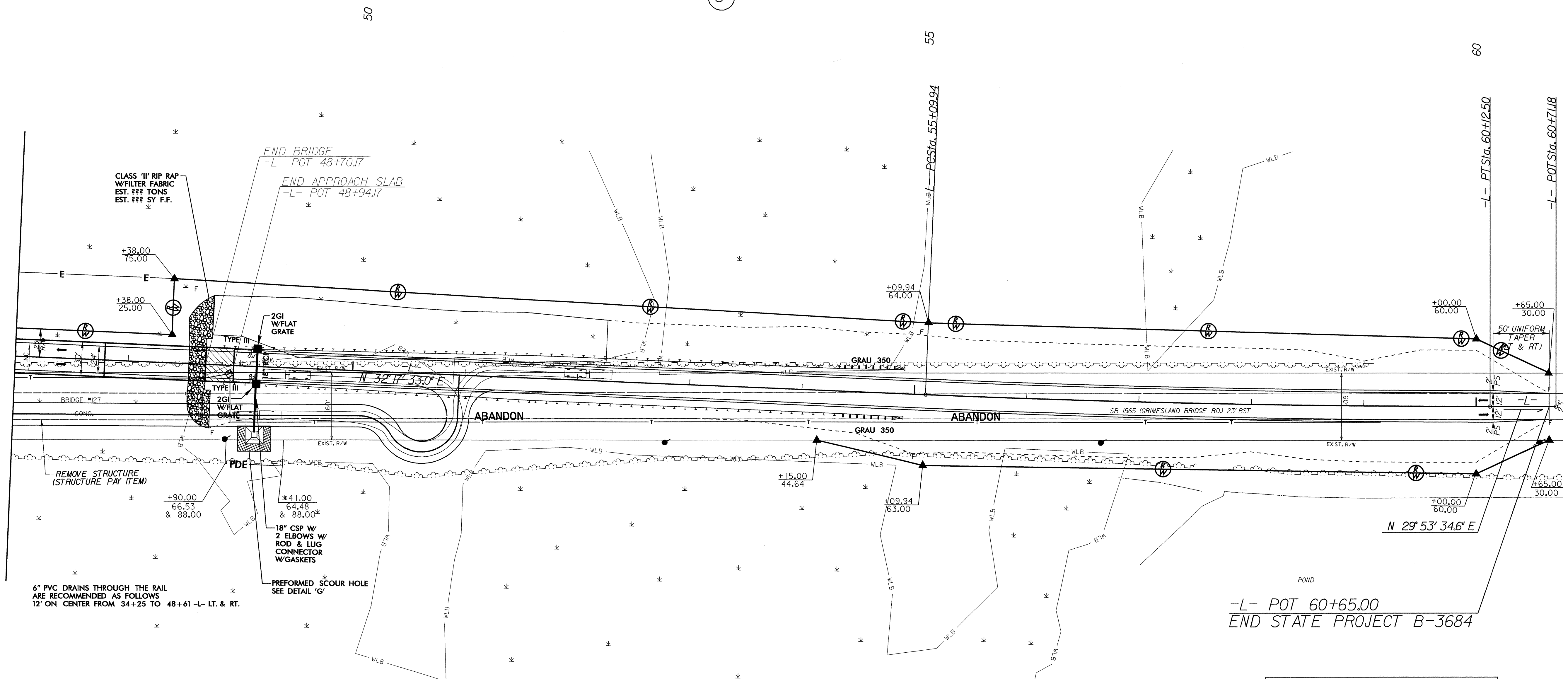
UTILITIES BY OTHERS

NOTE:
ALL PROPOSED UTILITY WORK
SHOWN ON THIS SHEET WILL
BE DONE BY OTHERS



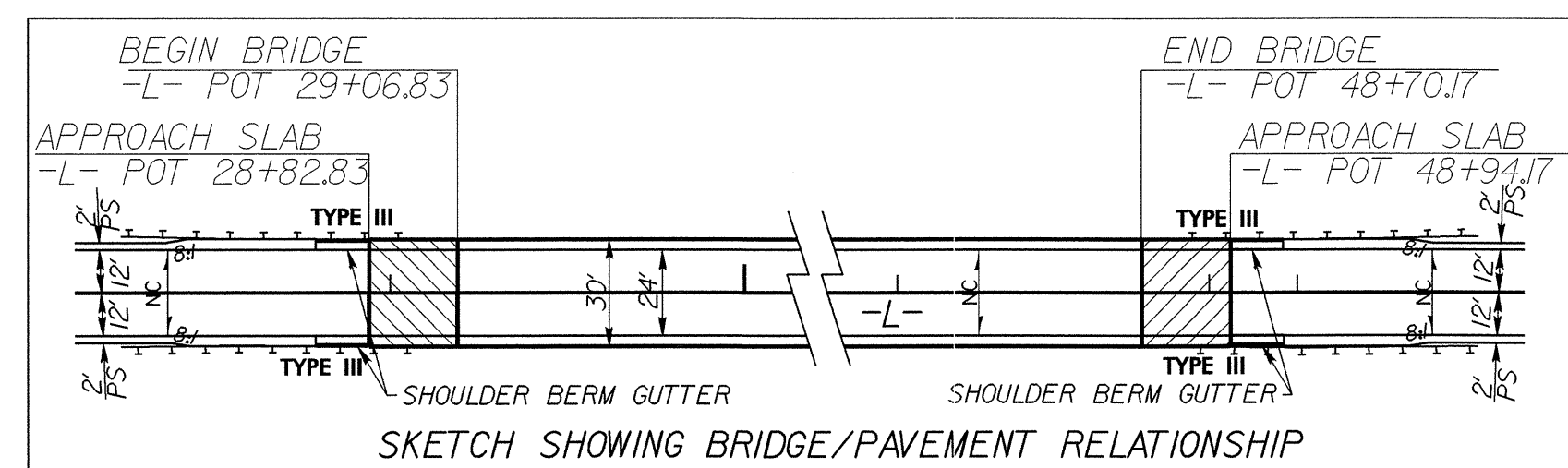
NORTH CAROLINA DEPARTMENT OF TRANSPORTATION
NO REFERENCE

8



6" PVC DRAINS THROUGH THE RAIL ARE RECOMMENDED AS FOLLOWS 12' ON CENTER FROM 34+25 TO 48+61 -L- LT. & RT.

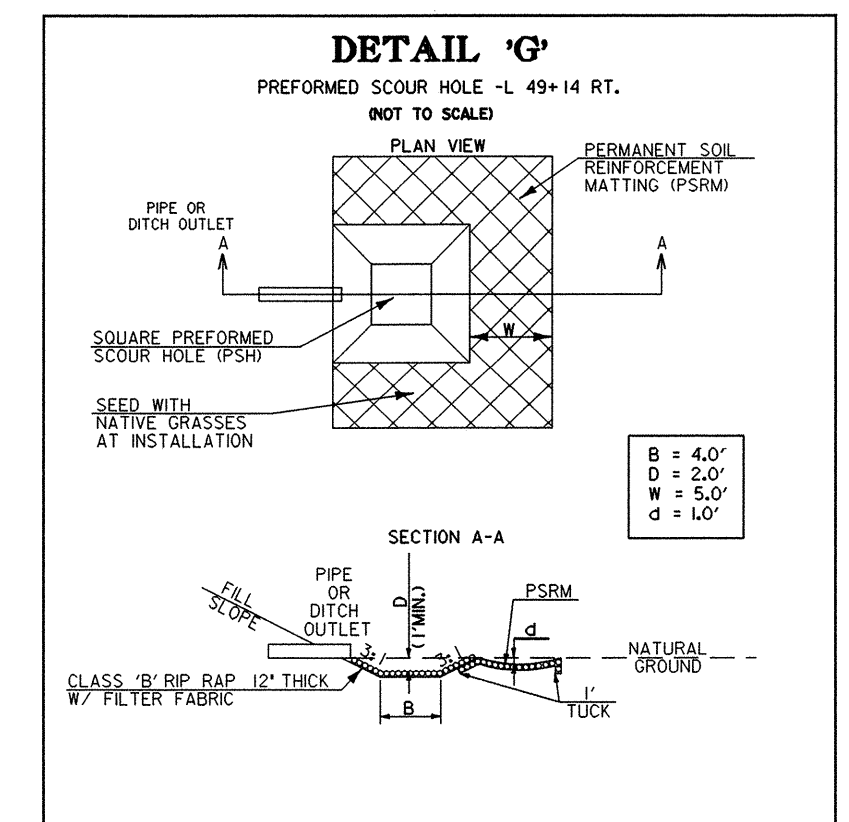
-L- POT 60+65.00
END STATE PROJECT B-3684



NORTH CAROLINA DEPARTMENT OF TRANSPORTATION
NO REFERENCE

8

-L-
PI Sta 57+61.26
 $\Delta = 2^\circ 23' 58.4" (LT)$
 $D = 0' 28' 38.9"$
 $L = 502.56'$
 $T = 251.32'$
 $R = 12,000.00'$
 $Se = NC$



FOR -L- PROFILE SEE SHEET 9

OBLITERATION OF EXISTING ROAD

5/14/99
13-MAR-2008 07:33
R:\Utilities\B3684\UT_U05_07.dgn