

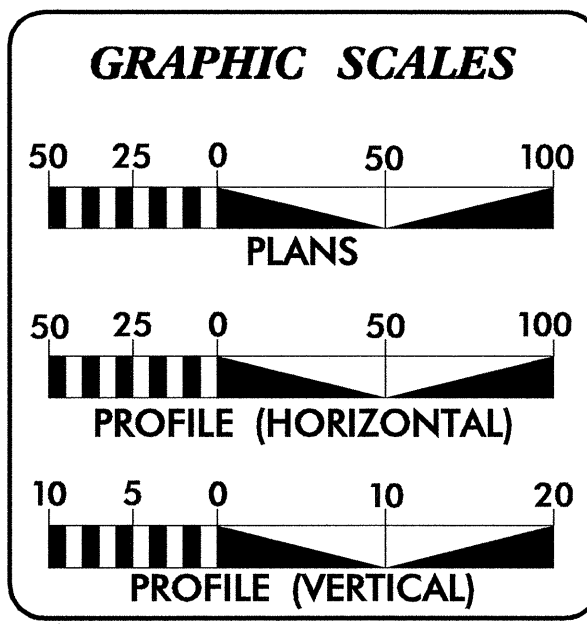
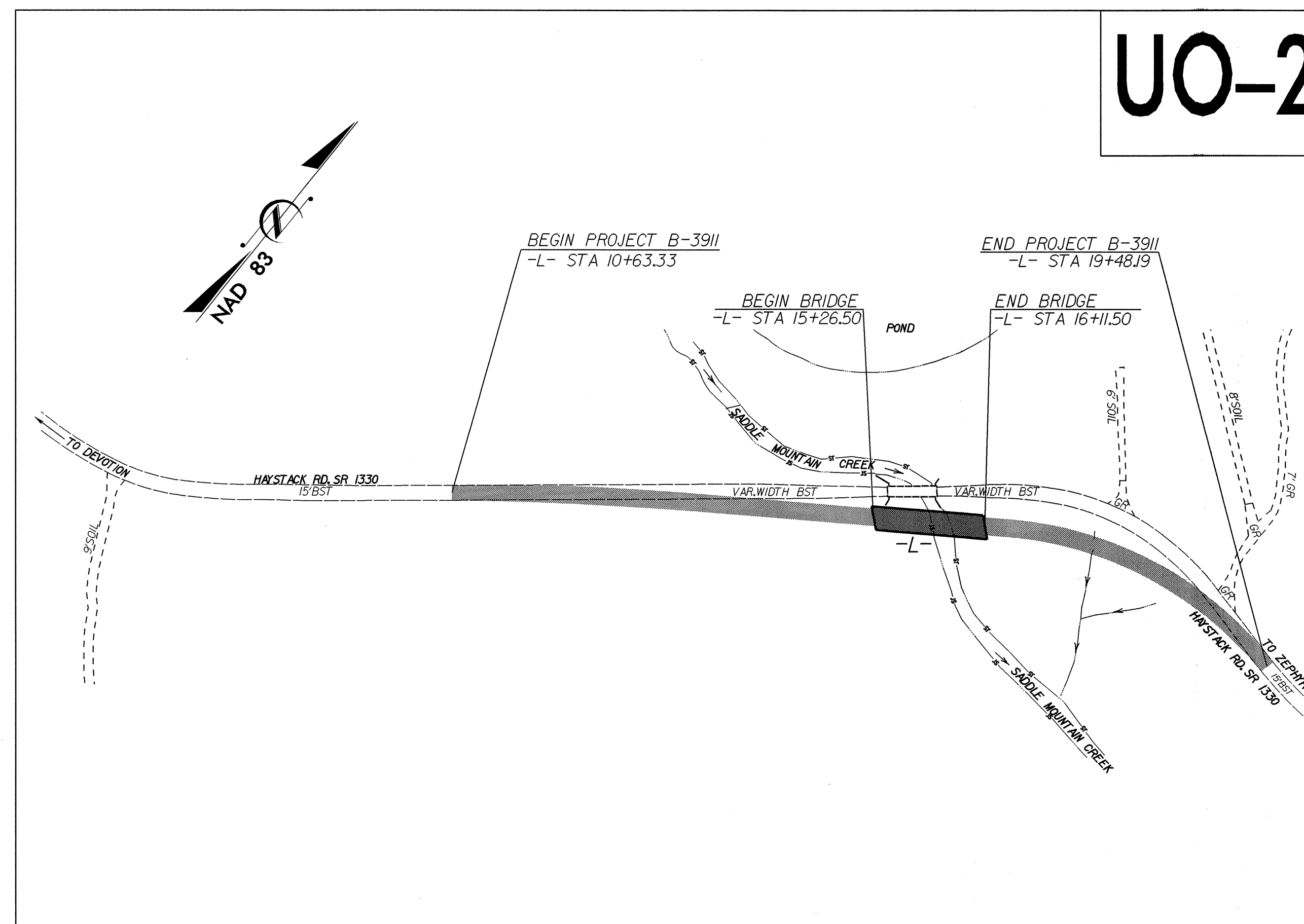
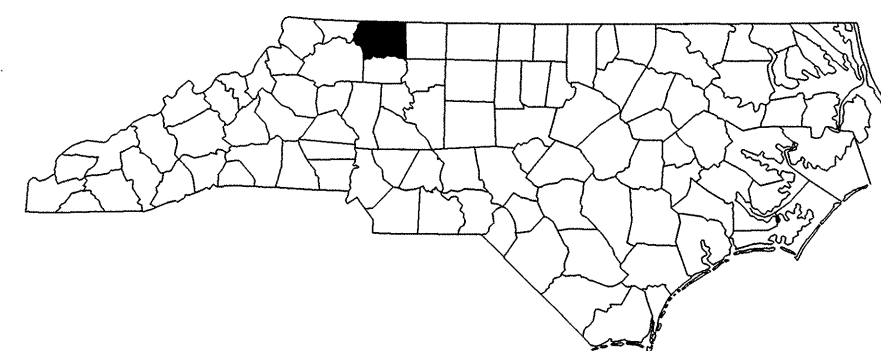
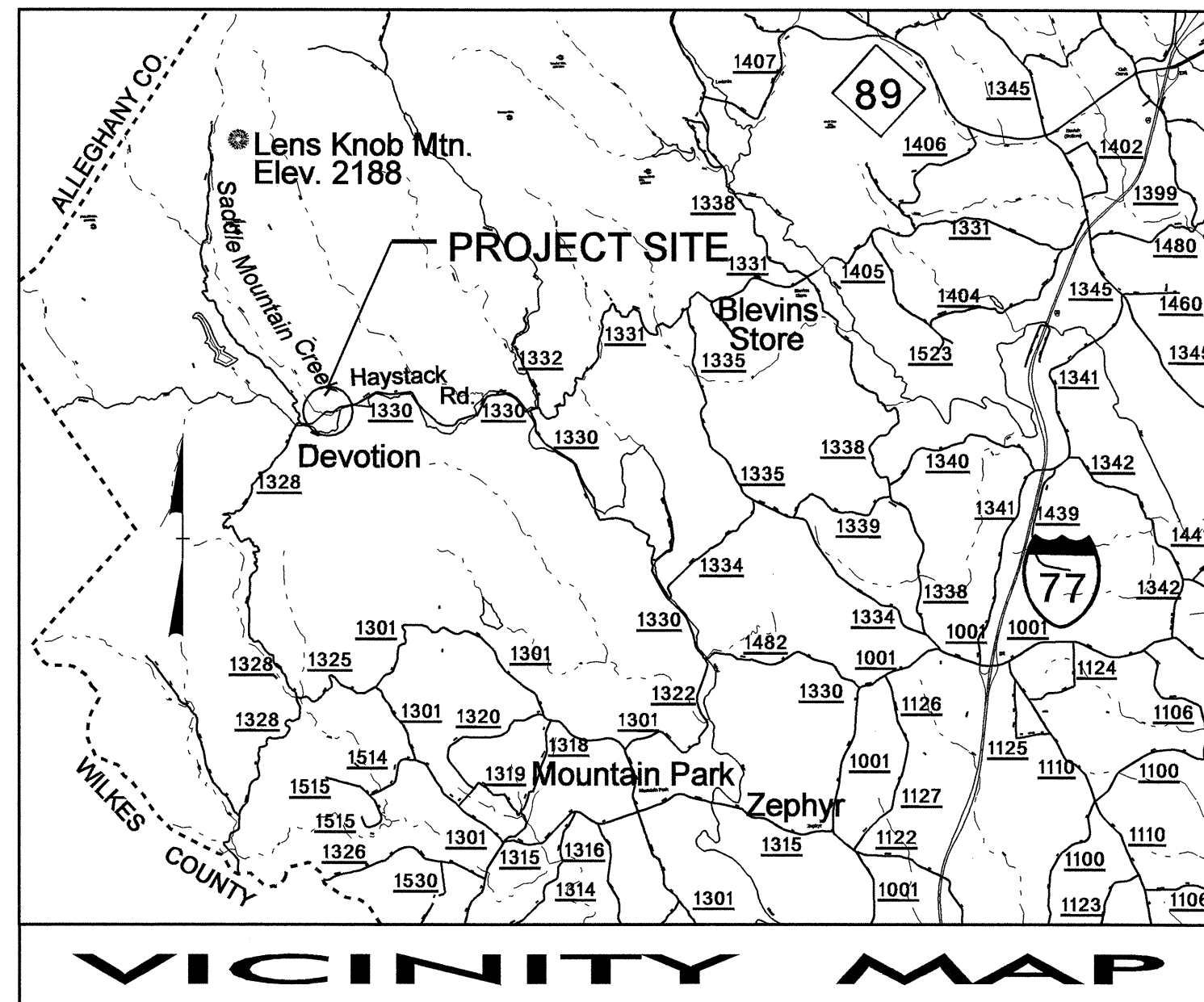
TIP PROJECT: B-3911

STATE OF NORTH CAROLINA
DIVISION OF HIGHWAYS

T.I.P. NO.	SHEET NO.
B-3911	UO-1

**UTILITY BY OTHERS PLANS
SURRY COUNTY**

**LOCATION: BRIDGE 38 OVER SADDLE MOUNTAIN CREEK ON
SR 1330 (HAYSTACK RD.)**
TYPE OF WORK: UTILITIES RELOCATION




INDEX OF SHEETS

SHEET NO.	DESCRIPTION
UO-1	TITLE SHEET
UO-2	UTILITY BY OTHERS PLAN SHEETS

UTILITY OWNERS ON PROJECT

- (1) SURRY-YADKIN EMC (POWER)
- (2) SURRY TMC (TELEPHONE)



PREPARED IN THE OFFICE OF:
**DIVISION OF HIGHWAYS
DESIGN SERVICES
UTILITY SECTION**

1591 MAIL SERVICES CENTER
RALEIGH NC 27699-1591
PHONE (919) 250-4128
FAX (919) 250-4119

Roger Worthington, P.E. UTILITIES SECTION ENGINEER
Corey Bousquet, P.E. UTILITIES SQUAD LEADER PROJECT ENGINEER
Cordell Lyons UTILITIES PROJECT DESIGNER

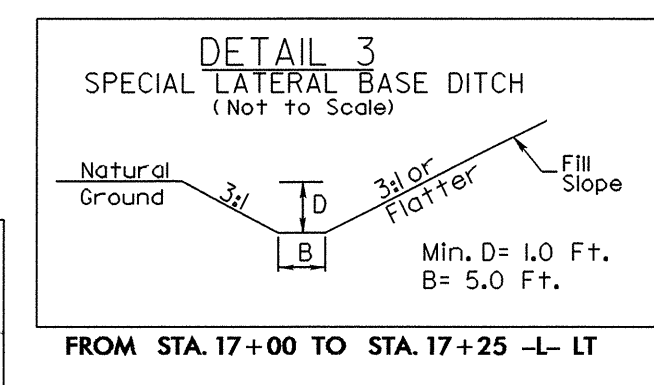
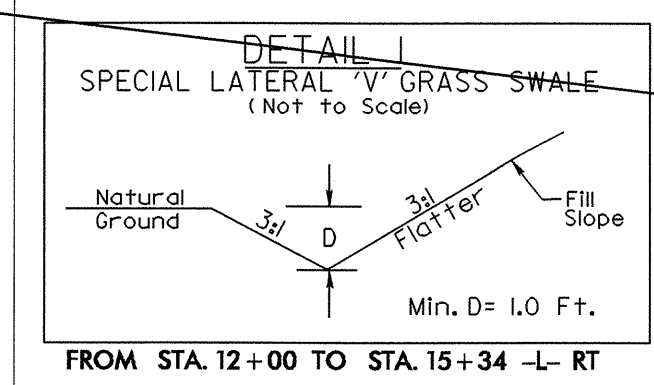
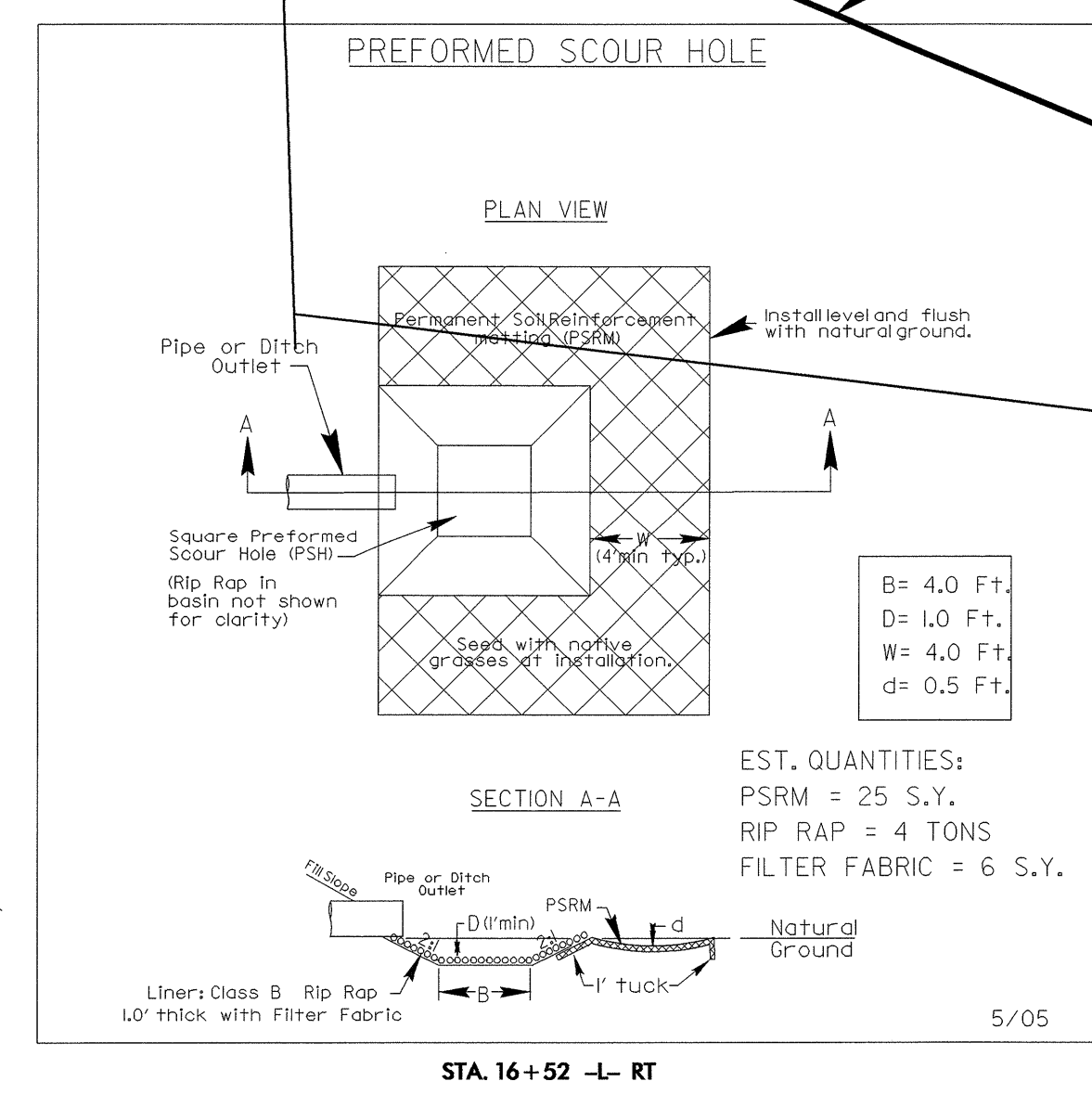
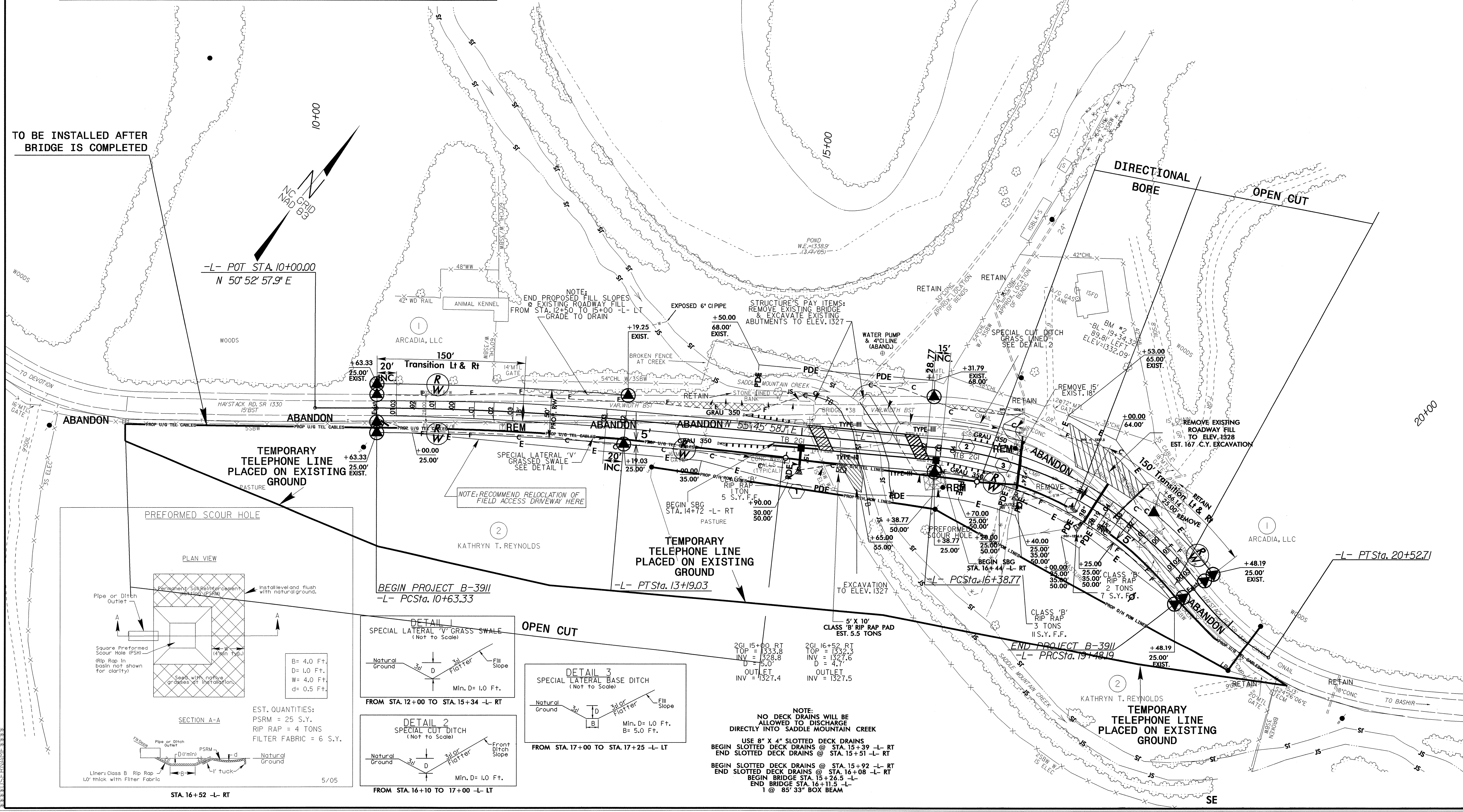
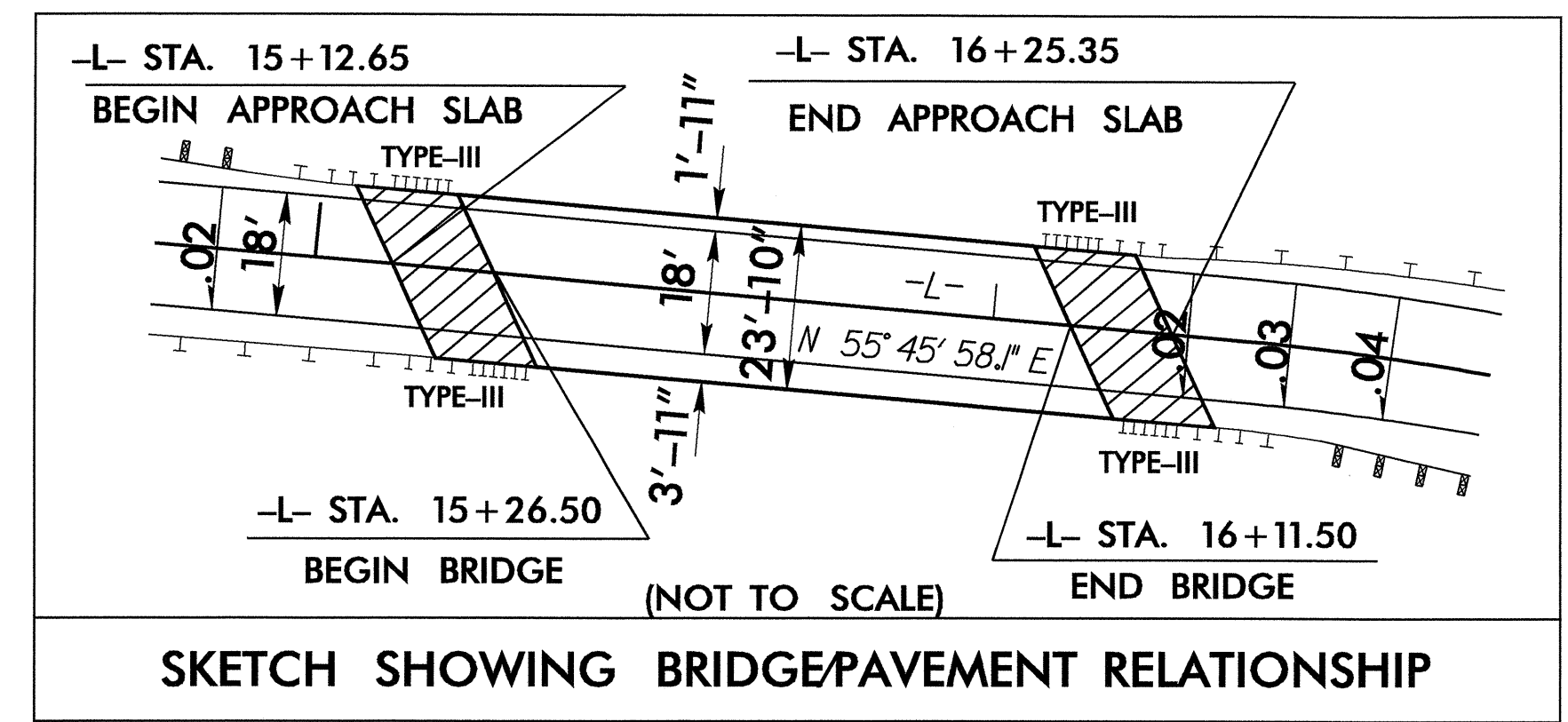
21-AUG-2008 15:48
r:\utilities\rdy\proj\b-3911_rdy_tsh.dgn
\$\$\$\$\$USERNAME\$\$\$\$\$

UTILITIES BY OTHERS

NOTE:
ALL PROPOSED UTILITY WORK
SHOWN ON THIS SHEET WILL
BE DONE BY OTHERS

PAVEMENT REMOVAL

- L -		
PI Sta 11+91.26	PI Sta 18+02.90	PI Sta 20+00.93
$\Delta = 4^{\circ} 53' 00.2" (RT)$	$\Delta = 47^{\circ} 16' 28.0" (RT)$	$\Delta = 19^{\circ} 00' 43.1" (LT)$
$D = 1^{\circ} 54' 35.5"$	$D = 15^{\circ} 16' 43.9"$	$D = 18^{\circ} 11' 20.9"$
$L = 255.69'$	$L = 309.41'$	$L = 104.52'$
$T = 127.92'$	$T = 164.12'$	$T = 52.75'$
$R = 3,000.00'$	$R = 375.00'$	$R = 315.00'$
$SE = .04$	$SE = .04$	$SE = Existing$
$V_D = 60 \text{ mph}$	$V_D = 35 \text{ mph}$	$V_D = Existing$



NOTE:
NO DECK DRAINS WILL BE
ALLOWED TO DISCHARGE
DIRECTLY INTO SADDLE MOUNTAIN CREEK
USE 8" X 4" SLOTTED DECK DRAINS
BEGIN SLOTTED DECK DRAINS @ STA. 15+39 -L- RT
END SLOTTED DECK DRAINS @ STA. 15+51 -L- RT
BEGIN SLOTTED DECK DRAINS @ STA. 15+92 -L- RT
END SLOTTED DECK DRAINS @ STA. 16+08 -L- RT
BEGIN BRIDGE STA. 15+26.5 -L-
END BRIDGE STA. 16+11.5 -L-
1 @ 85' 33" BOX BEAM

5/14/99
21-AUG-2008 15:47:47 (o:\b-3911_UT_UO_dsn.dgn
P:\AUGUST\2008\154747\o\b-3911_UT_UO_dsn.dgn