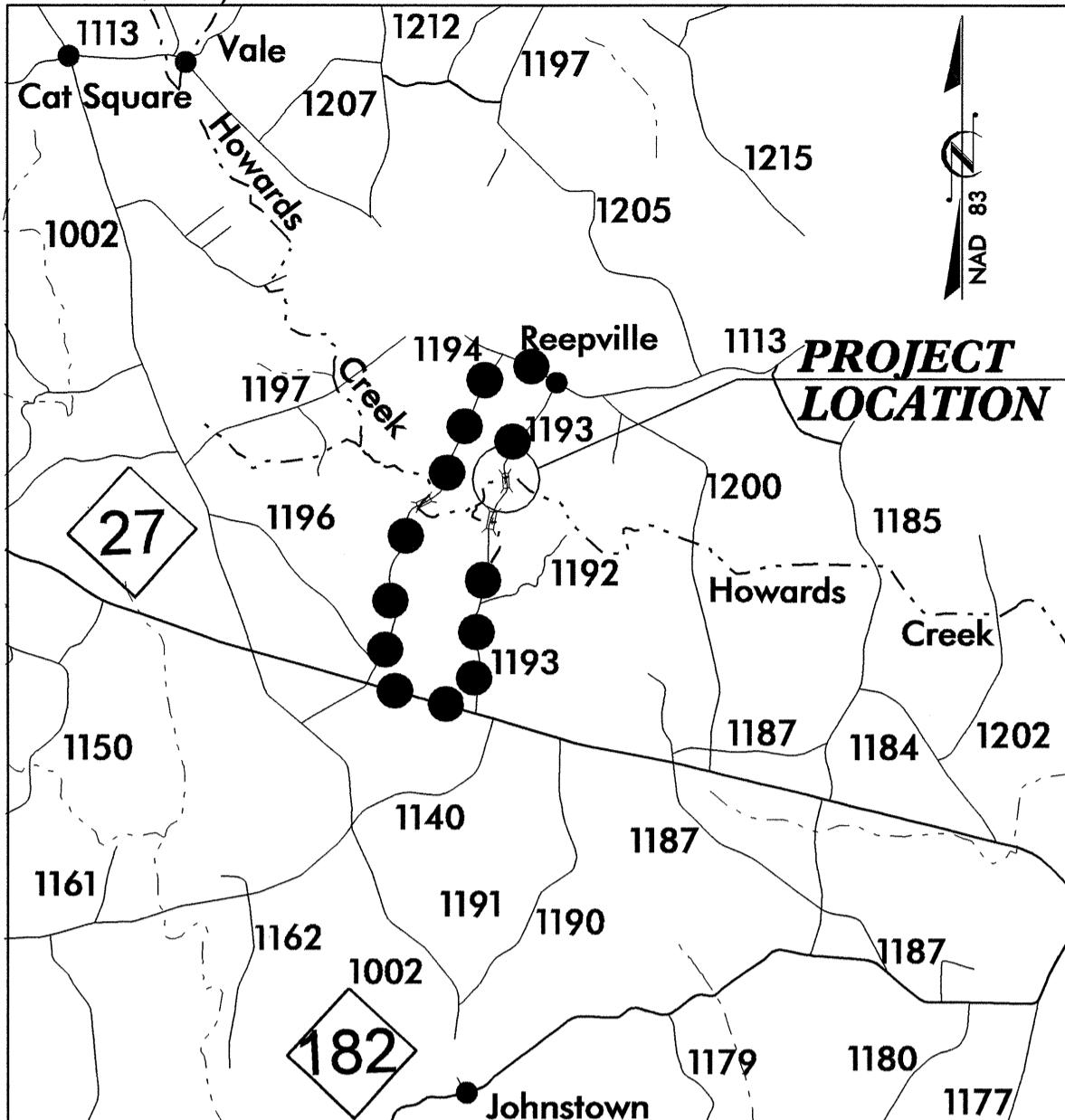


TIP PROJECT: B-4177



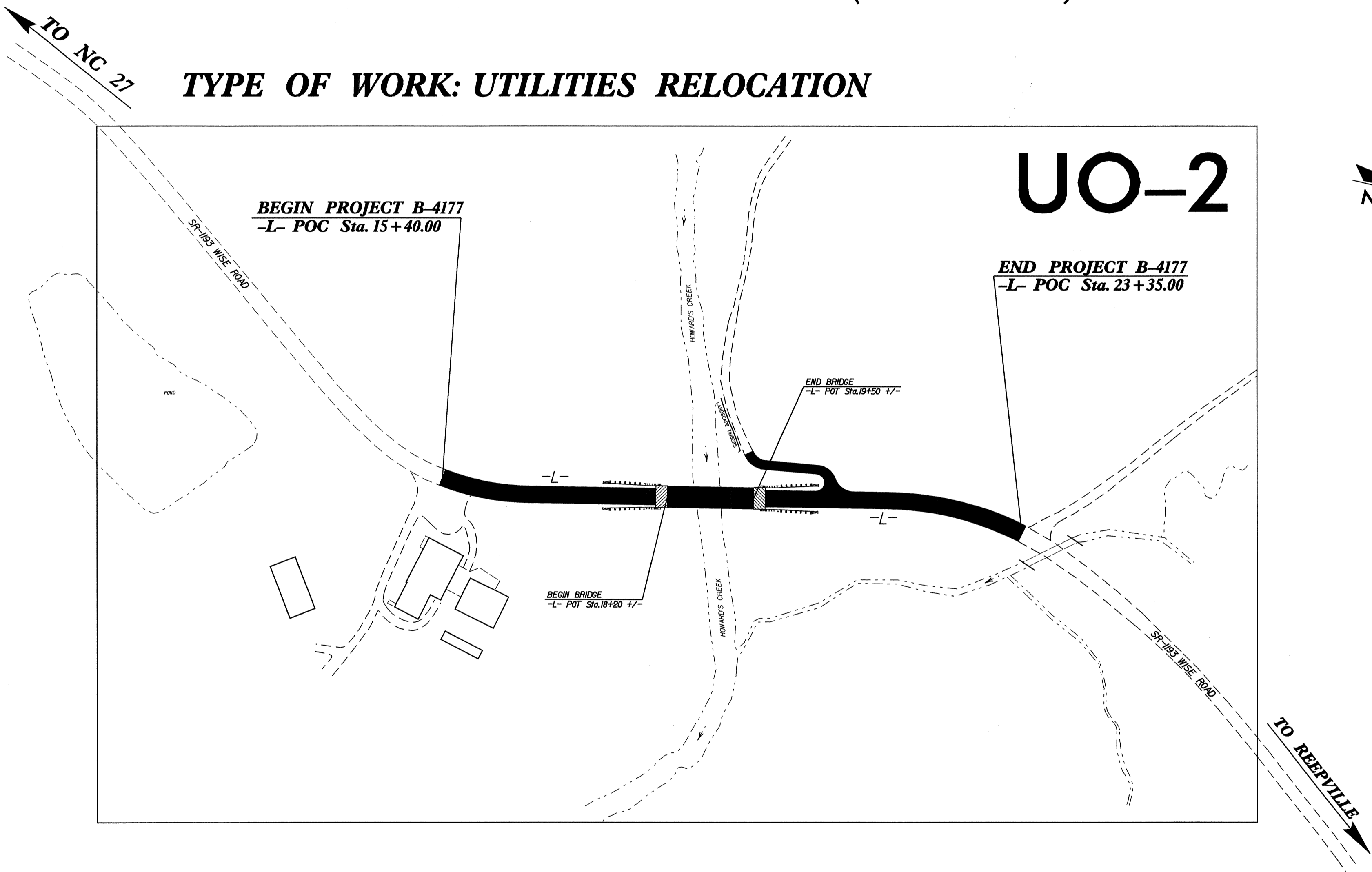
VICINITY MAP
 ●●●●● OFF-SITE DETOUR

STATE OF NORTH CAROLINA
 DIVISION OF HIGHWAYS

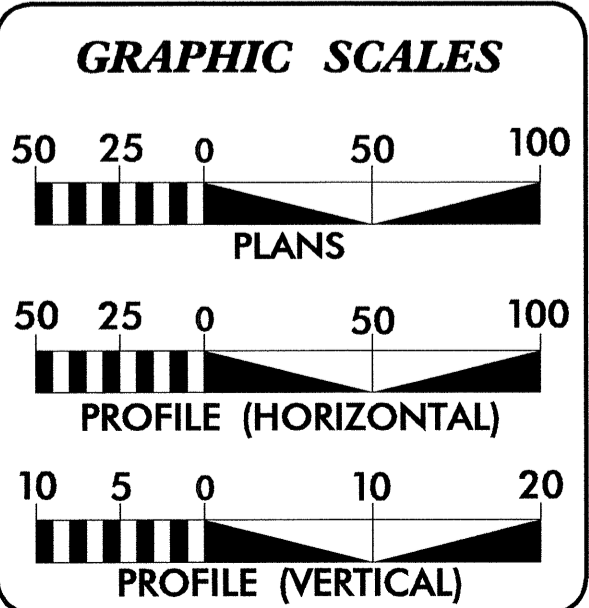
UTILITY BY OTHERS PLANS LINCOLN COUNTY

LOCATION: BRIDGE NO. 142 ON SR 1193 (WISE ROAD) OVER HOWARD'S CREEK

TYPE OF WORK: UTILITIES RELOCATION



UO-2



INDEX OF SHEETS

SHEET NO.	DESCRIPTION
UO-1	TITLE SHEET
UO-2	UTILITY BY OTHERS PLAN SHEETS

UTILITY OWNERS ON PROJECT

(1) DUKE ENERGY (POWER)
 (2) AT&T (TELEPHONE)

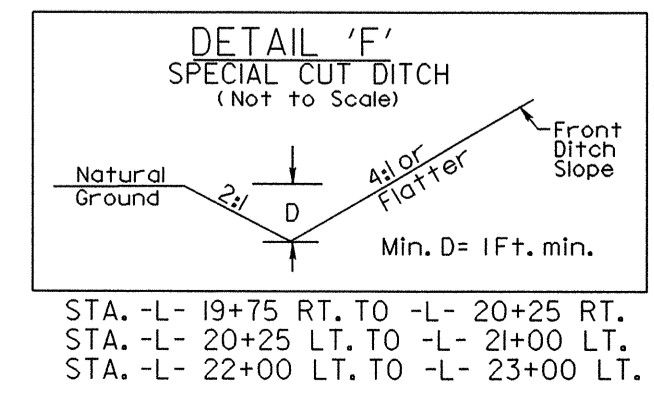
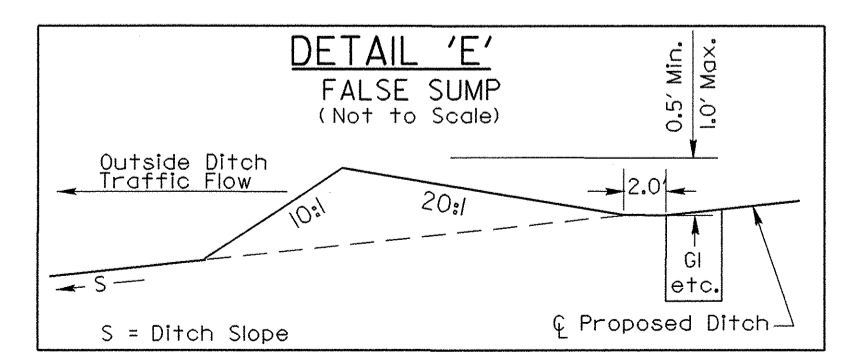
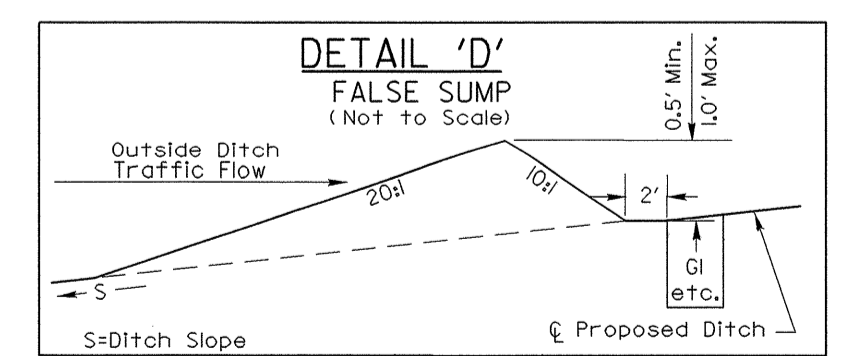
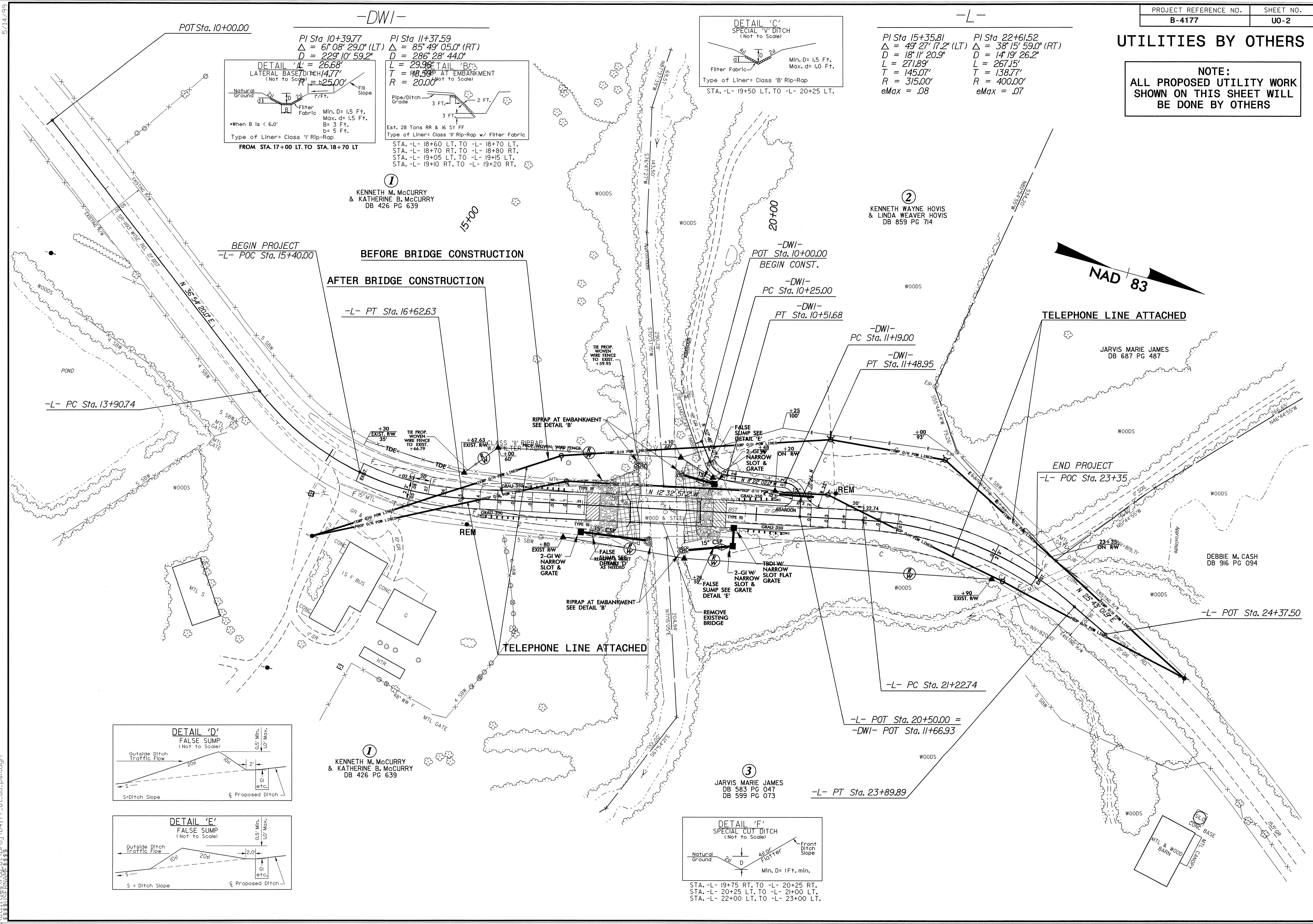
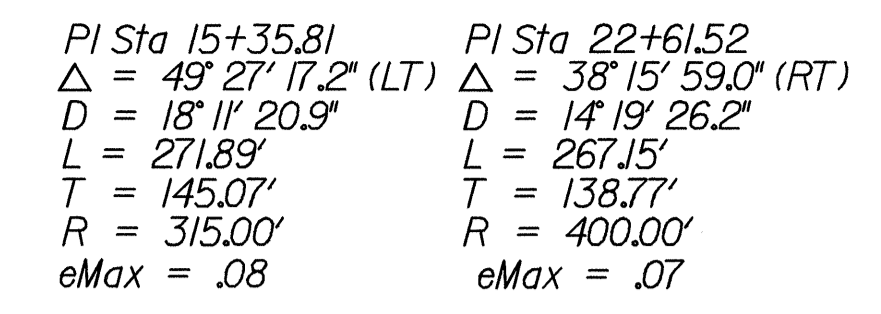
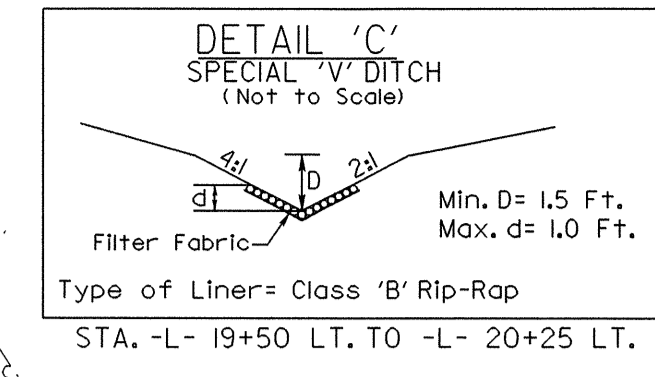
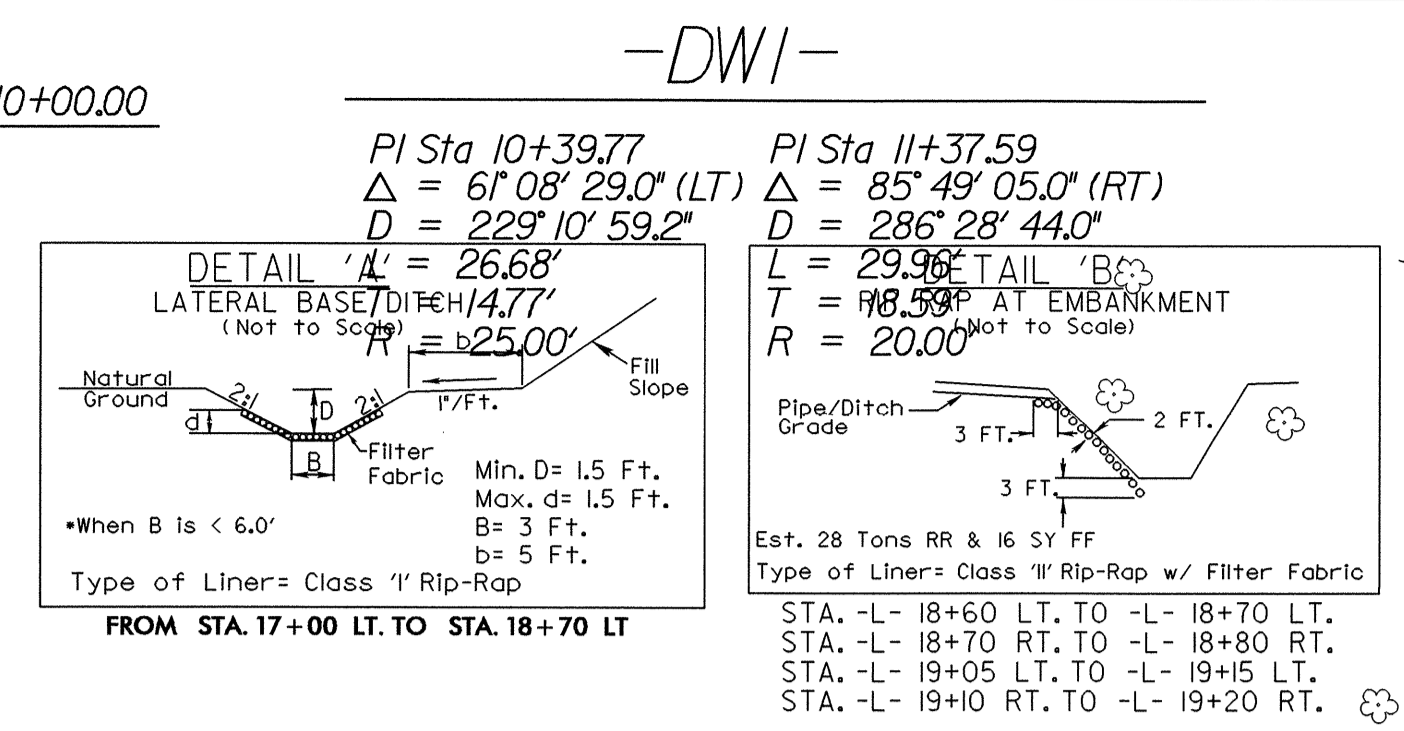
PREPARED IN THE OFFICE OF:
DIVISION OF HIGHWAYS
DESIGN SERVICES
UTILITY SECTION

1591 MAIL SERVICES CENTER
 RALEIGH, NC 27699-1591
 PHONE (919) 256-4128
 FAX (919) 256-4119

Roger Worthington, P.E. UTILITIES SECTION ENGINEER
 Corey Bousquet, P.E. UTILITIES SQUAD LEADER PROJECT ENGINEER
 Cordell Lyons UTILITIES PROJECT DESIGNER

UTILITIES BY OTHERS

NOTE:
ALL PROPOSED UTILITY WORK
SHOWN ON THIS SHEET WILL
BE DONE BY OTHERS



5/14/09
15-AUG-2008 10:26
\\ut.us.psh.dgn
\\ut.us.psh.dgn