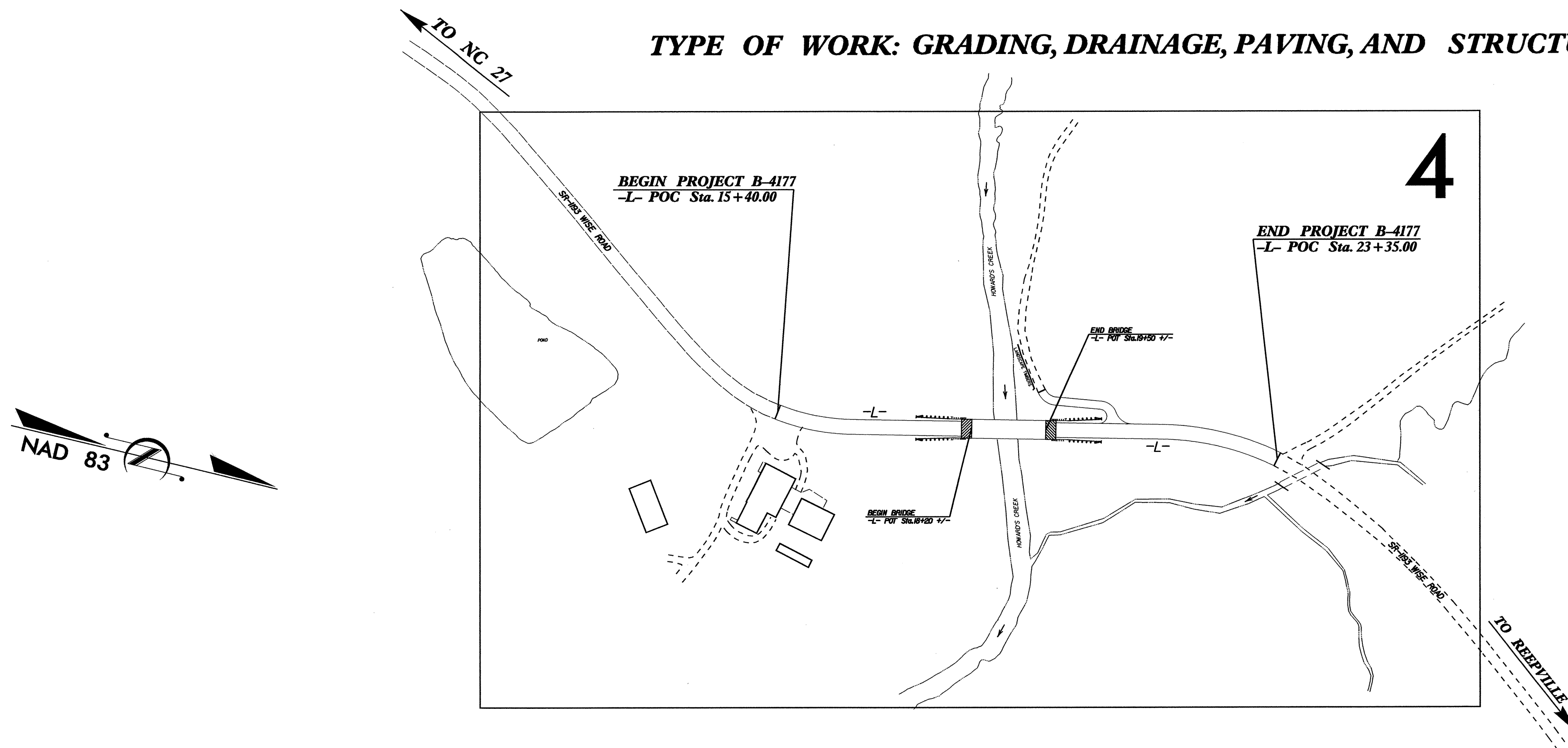


**TIP PROJECT: B-4177**

STATE OF NORTH CAROLINA  
 DIVISION OF HIGHWAYS  
 PLAN FOR PROPOSED  
 HIGHWAY EROSION CONTROL  
**LINCOLN COUNTY**

**LOCATION: BRIDGE No. 142 OVER HOWARDS CREEK ON  
 SR-1193 (WISE ROAD), SOUTH OF REEPVILLE**

**TYPE OF WORK: GRADING, DRAINAGE, PAVING, AND STRUCTURE**



STATE	STATE PROJECT REFERENCE NO.	SHEET NO.	TOTAL SHEETS
N.C.	B-4177	EC-1	
STATE PROJ. NO.	F.A. PROJ. NO.	DESCRIPTION	

**EROSION AND SEDIMENT CONTROL MEASURES**

Std. #	Description	Symbol
1630.03	Temporary Silt Ditch	---
1630.05	Temporary Diversion	--->
1605.01	Temporary Silt Fence	
1606.01	Special Sediment Control Fence	---X---
1622.01	Temporary Berms and Slope Drains	--->---
1630.01	Riser Basin	○
	Silt Basin Type B	▨
1633.01	Temporary Rock Silt Check Type-A	▤
	Temporary Rock Silt Check Type-B	▥
	Wattle	→
1634.01	Temporary Rock Sediment Dam Type-A	⊞
1634.02	Temporary Rock Sediment Dam Type-B	⊞
1635.01	Rock Pipe Inlet Sediment Trap Type-A	⊞
1635.02	Rock Pipe Inlet Sediment Trap Type-B	⊞
1630.04	Stilling Basin	▭
1630.06	Special Stilling Basin	▭
	Rock Inlet Sediment Trap:	
1632.01	Type A	A
1632.02	Type B	B
1632.03	Type C	C
	Skimmer Basin	▭
	Tiered Skimmer Basin	▭
	Infiltration Basin	▭

**THIS PROJECT CONTAINS  
 EROSION CONTROL PLANS  
 FOR CLEARING AND  
 GRUBBING PHASE OF  
 CONSTRUCTION.**

**GRAPHIC SCALE**

0  
  
**PLANS**

0  
  
**PROFILE (HORIZONTAL)**

0  
  
**PROFILE (VERTICAL)**

ROADSIDE ENVIRONMENTAL UNIT  
 DIVISION OF HIGHWAYS  
 STATE OF NORTH CAROLINA

Prepared In the Office of:  
**ROADSIDE ENVIRONMENTAL UNIT**  
 1 South Wilmington St.  
 Raleigh, NC 27611

**2006 STANDARD SPECIFICATIONS**

Roadway Standard Drawings

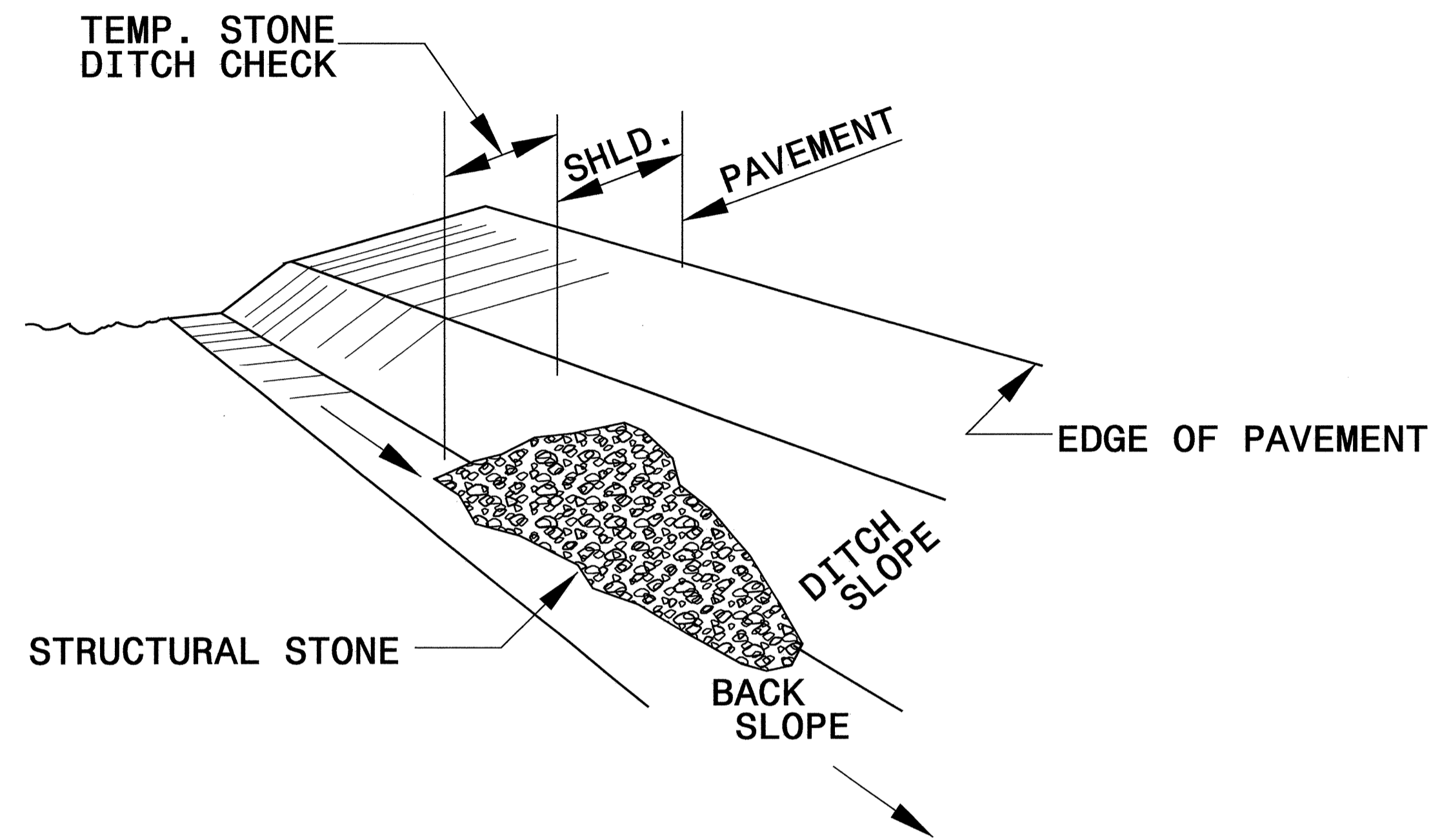
The following roadway english standards as appear in "Roadway Standard Drawings"- Roadway Design Unit - N. C. Department of Transportation - Raleigh, N. C., dated July 18, 2006 and the latest revision thereto are applicable to this project and by reference hereby are considered a part of these plans.

1605.01 Temporary Silt Fence	1630.06 Special Stilling Basin
1607.01 Gravel Construction Entrance	1632.02 Rock Inlet Sediment Trap Type B
1630.05 Temporary Diversion	1632.03 Rock Inlet Sediment Trap Type C
	1633.01 Temporary Rock Silt Check Type A

ppr\c:\est2\12-15-08\12-15-08\_0045\Roadside Environmental Design\B4177\_EC\_tah.dgn

PROJECT REFERENCE NO. B-4177	SHEET NO. EC-2
RW SHEET NO.	
ROADWAY DESIGN ENGINEER	HYDRAULICS ENGINEER

# TEMPORARY ROCK SILT CHECK TYPE 'B' DETAIL

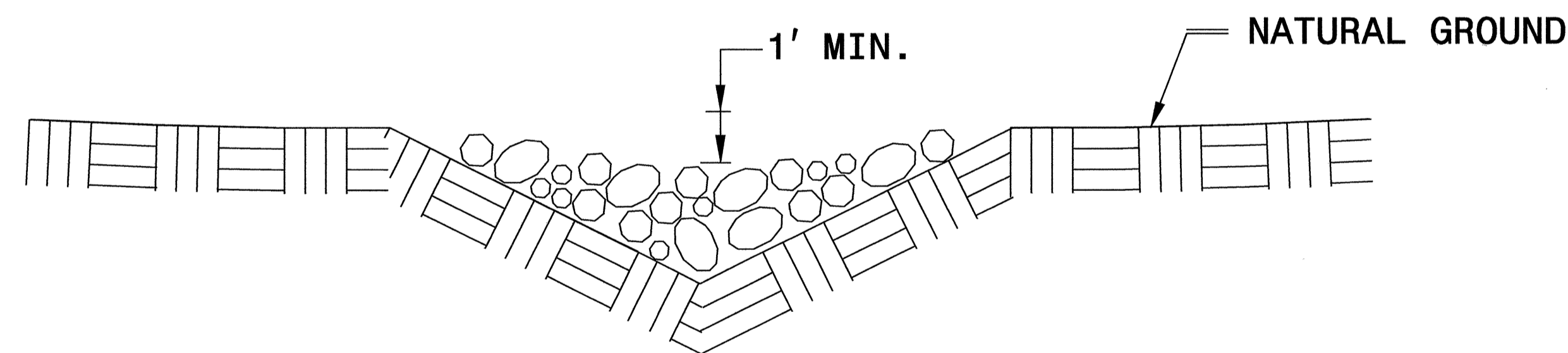


**ISOMETRIC VIEW**

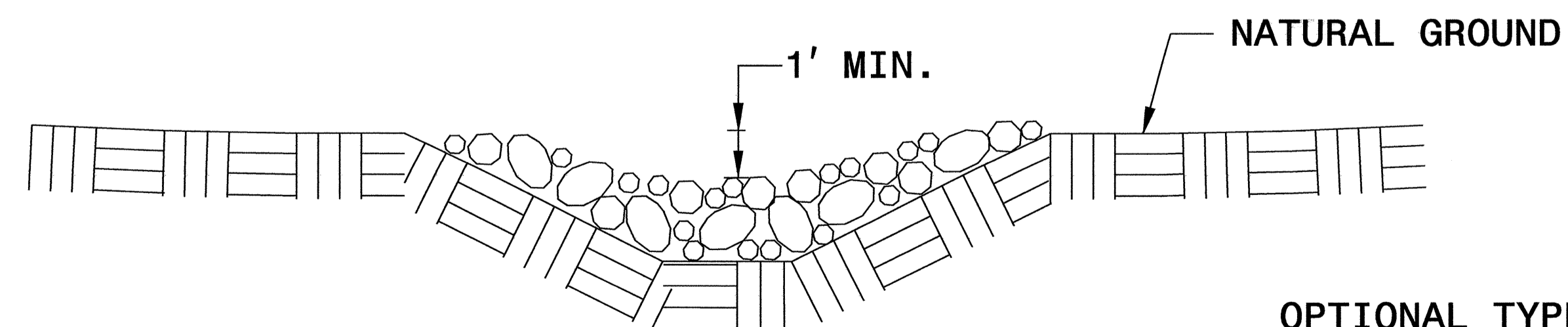
**NOTES:**

USE CLASS 'B' EROSION CONTROL STONE FOR STRUCTURAL STONE.

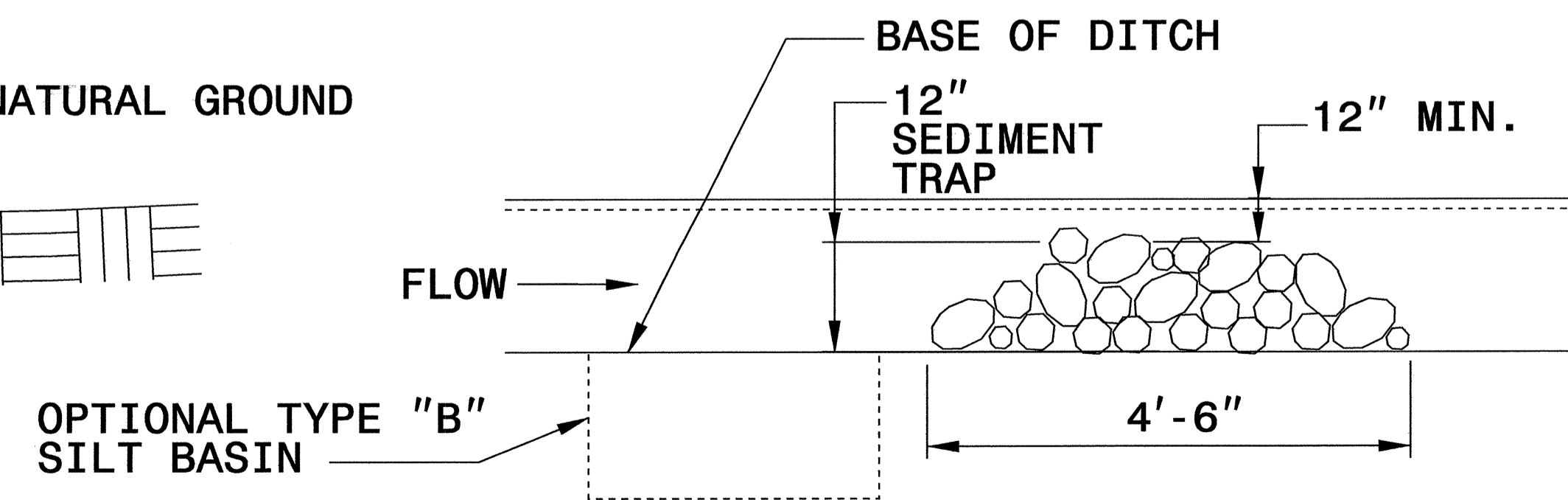
THE ENGINEER MAY DIRECT THE OPTION OF CLASS "A" STONE FOR SITES HAVING LESS THAN ONE (1) ACRE DRAINAGE AREA AND A DITCH GRADE LESS THAN 3%.



**CROSS SECTION VEE DITCH**



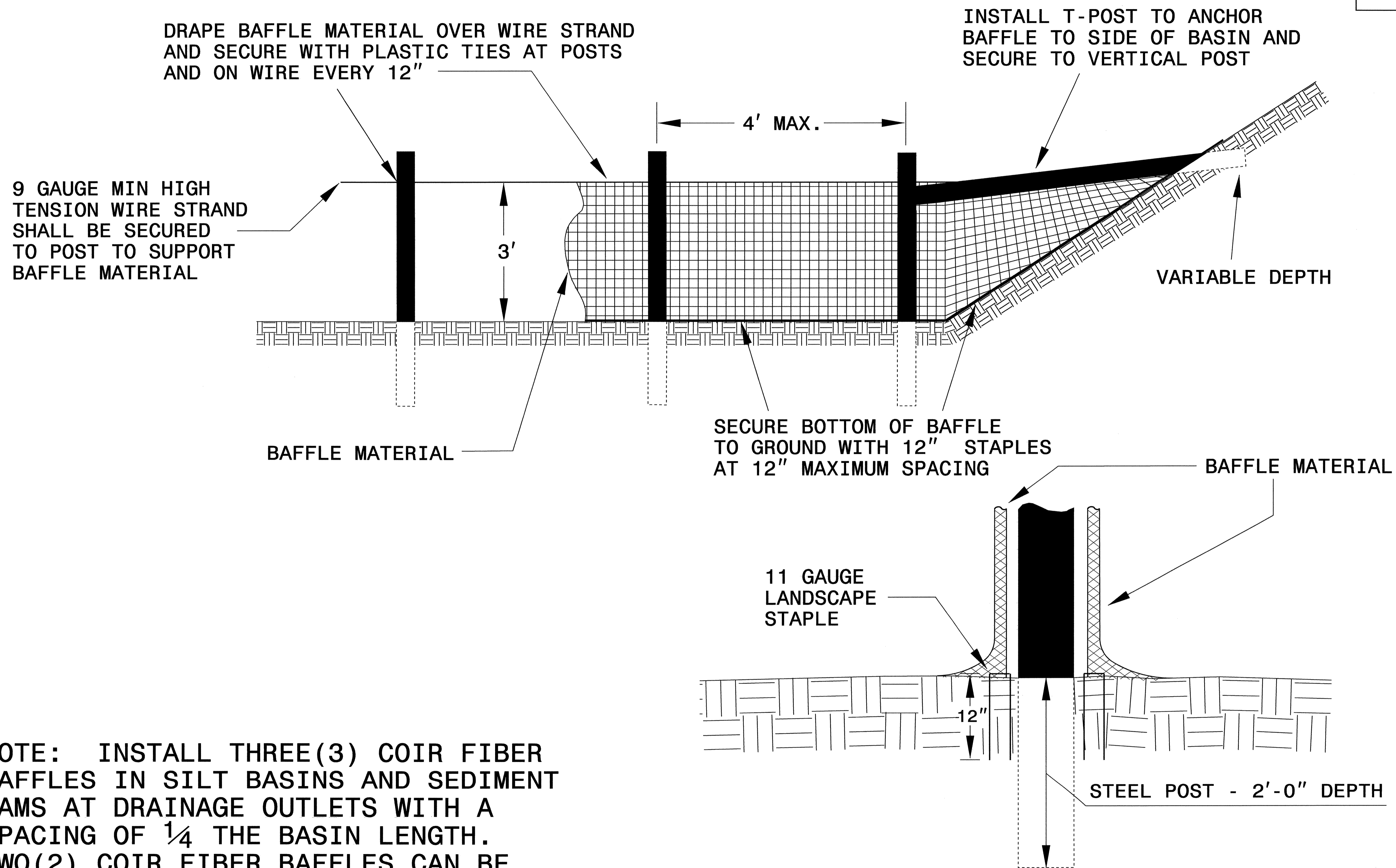
**CROSS SECTION TRAPEZOIDAL DITCH**



**ELEVATION VIEW**

PROJECT REFERENCE NO. B-4177	SHEET NO. EC-2A
RW SHEET NO.	
ROADWAY DESIGN ENGINEER	HYDRAULICS ENGINEER

# COIR FIBER BAFFLE DETAIL

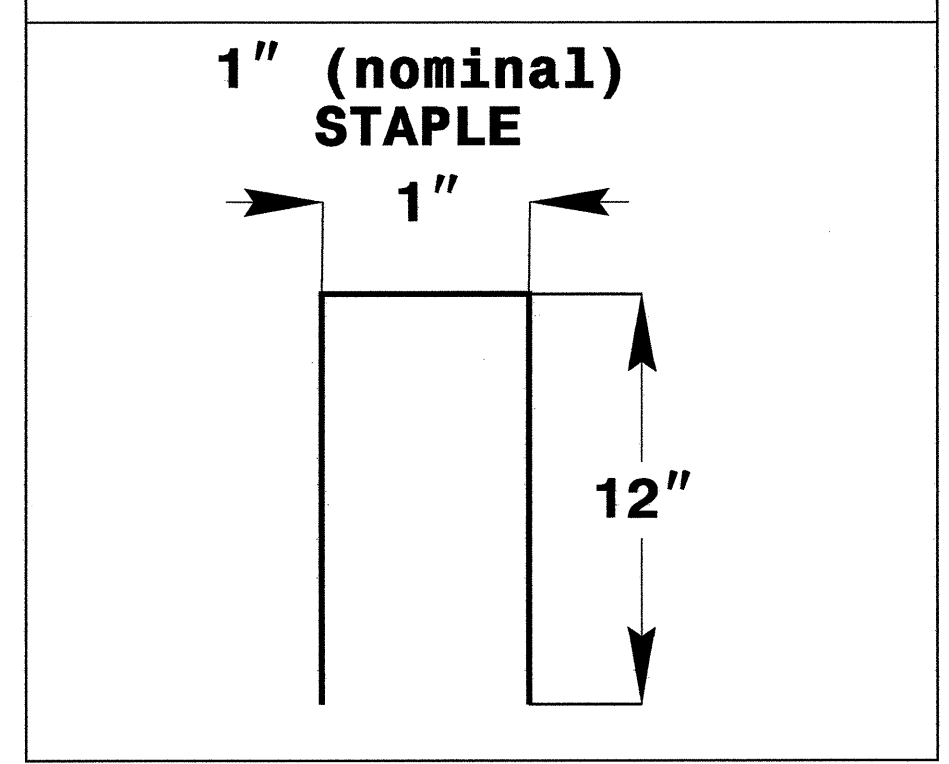
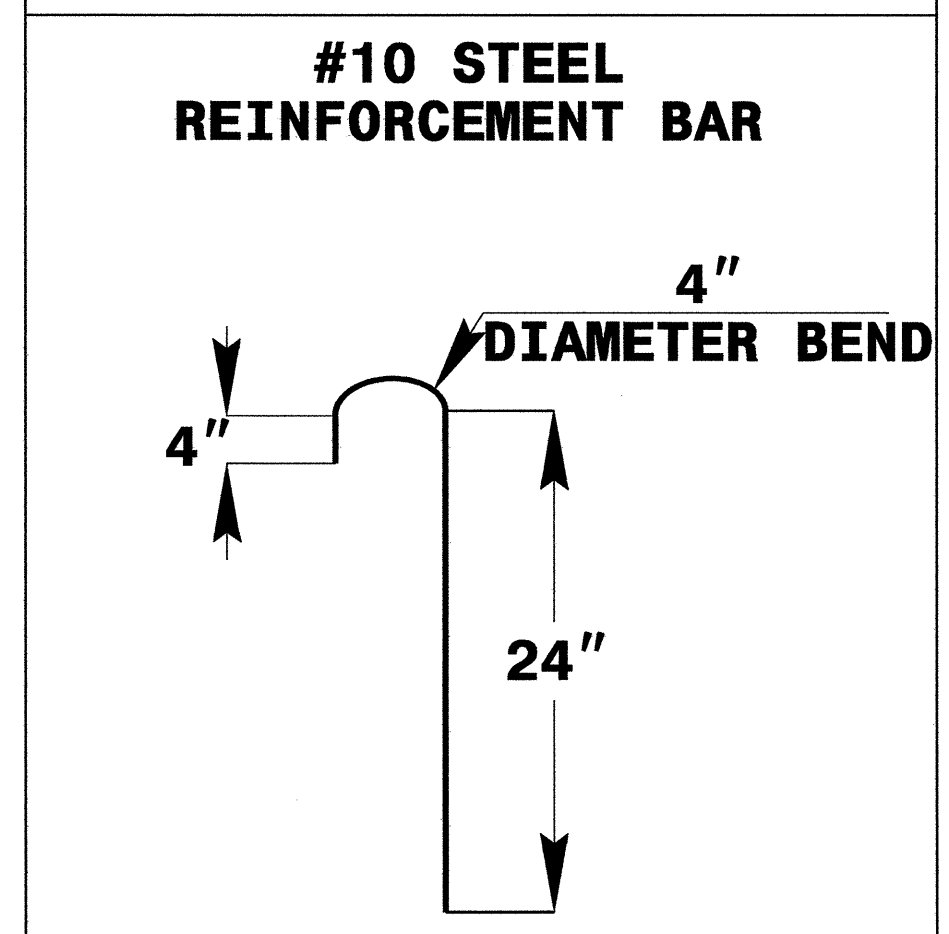
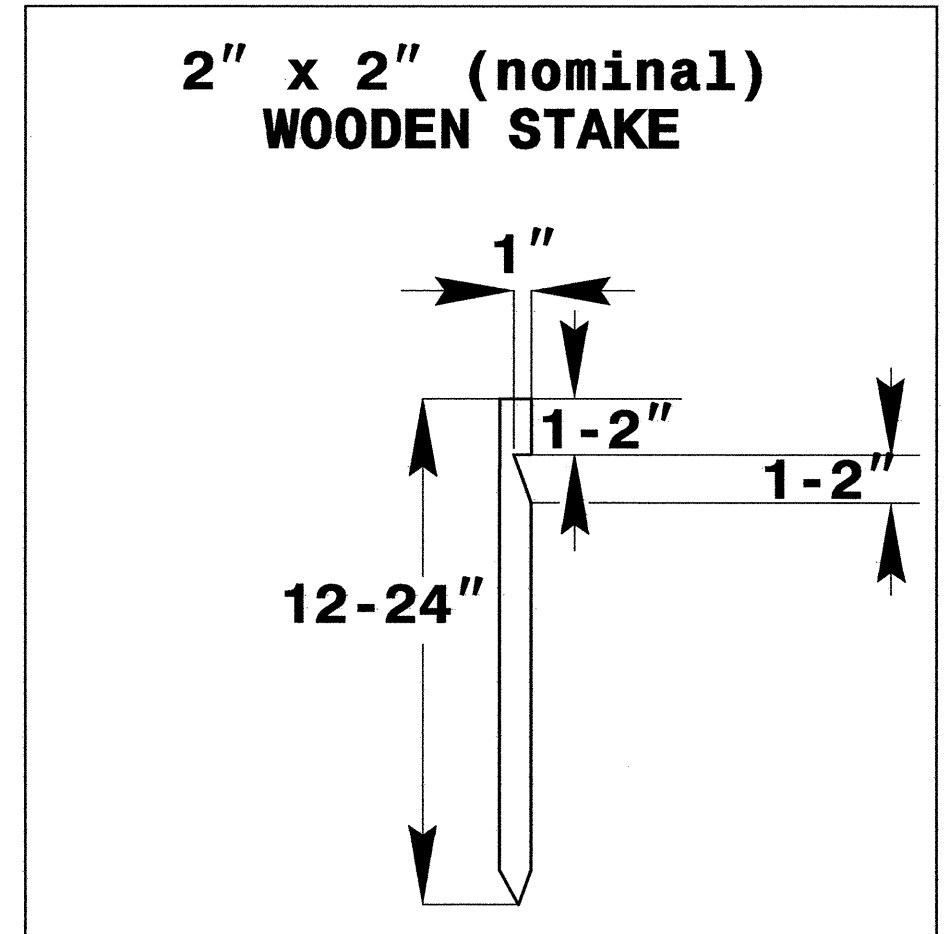
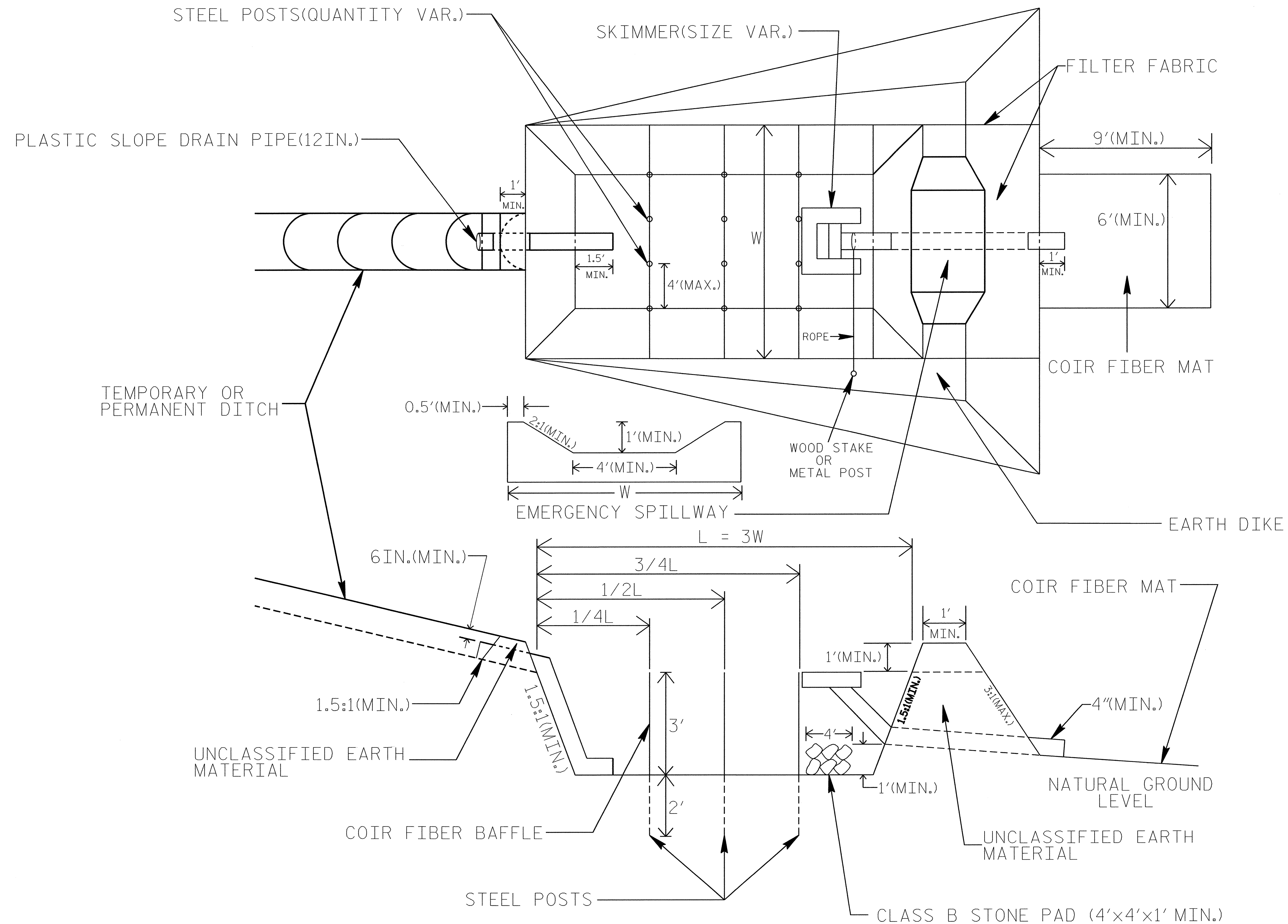


NOTE: INSTALL THREE(3) COIR FIBER BAFFLES IN SILT BASINS AND SEDIMENT DAMS AT DRAINAGE OUTLETS WITH A SPACING OF  $\frac{1}{4}$  THE BASIN LENGTH. TWO(2) COIR FIBER BAFFLES CAN BE INSTALLED IN SILT BASINS AND DAMS LESS THAN 20 FT. IN LENGTH WITH A SPACING OF  $\frac{1}{3}$  THE BASIN LENGTH.

BAFFLE MATERIAL SHALL BE SECURED TO THE BOTTOM AND SIDES OF BASIN USING 12" LANDSCAPE STAPLES

# SKIMMER BASIN WITH BAFFLES DETAIL

PROJECT REFERENCE NO. B-4177	SHEET NO. EC-2B
RW SHEET NO.	
ROADWAY DESIGN ENGINEER	HYDRAULICS ENGINEER



## COIR FIBER MAT ANCHOR OPTIONS

### NOTES

1. SEED AND PLACE MATTING FOR EROSION CONTROL ON INTERIOR SIDESLOPES.
2. LIMIT EARTH DIKE HEIGHT TO 5 FT.
3. THE MINIMUM BASIN WIDTH SHALL BE 9 FT.
4. DETERMINE EMERGENCY SPILLWAY LENGTH (FT.) USING  $Q/0.8$ , WHERE Q IS FLOW RATE (CFS) INTO BASIN.

NOT TO SCALE



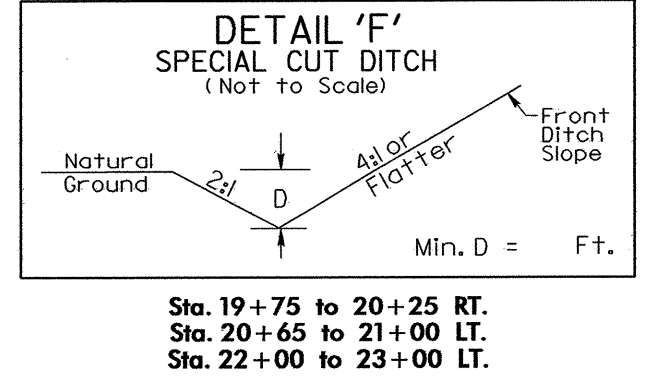
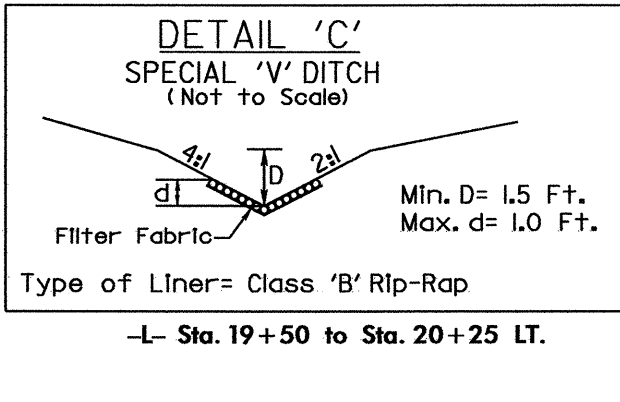
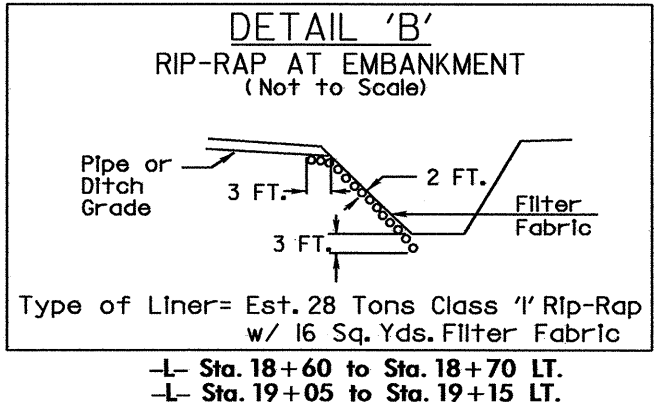
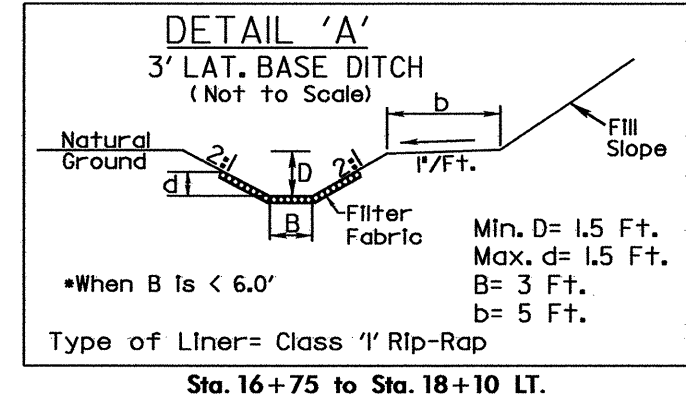
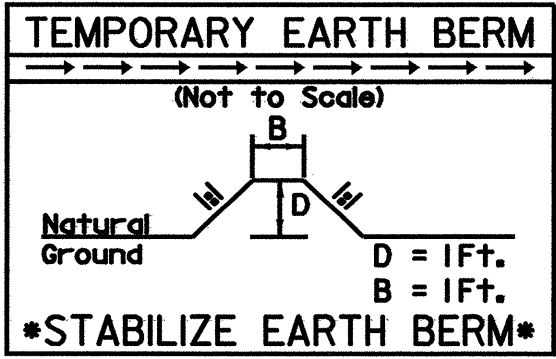
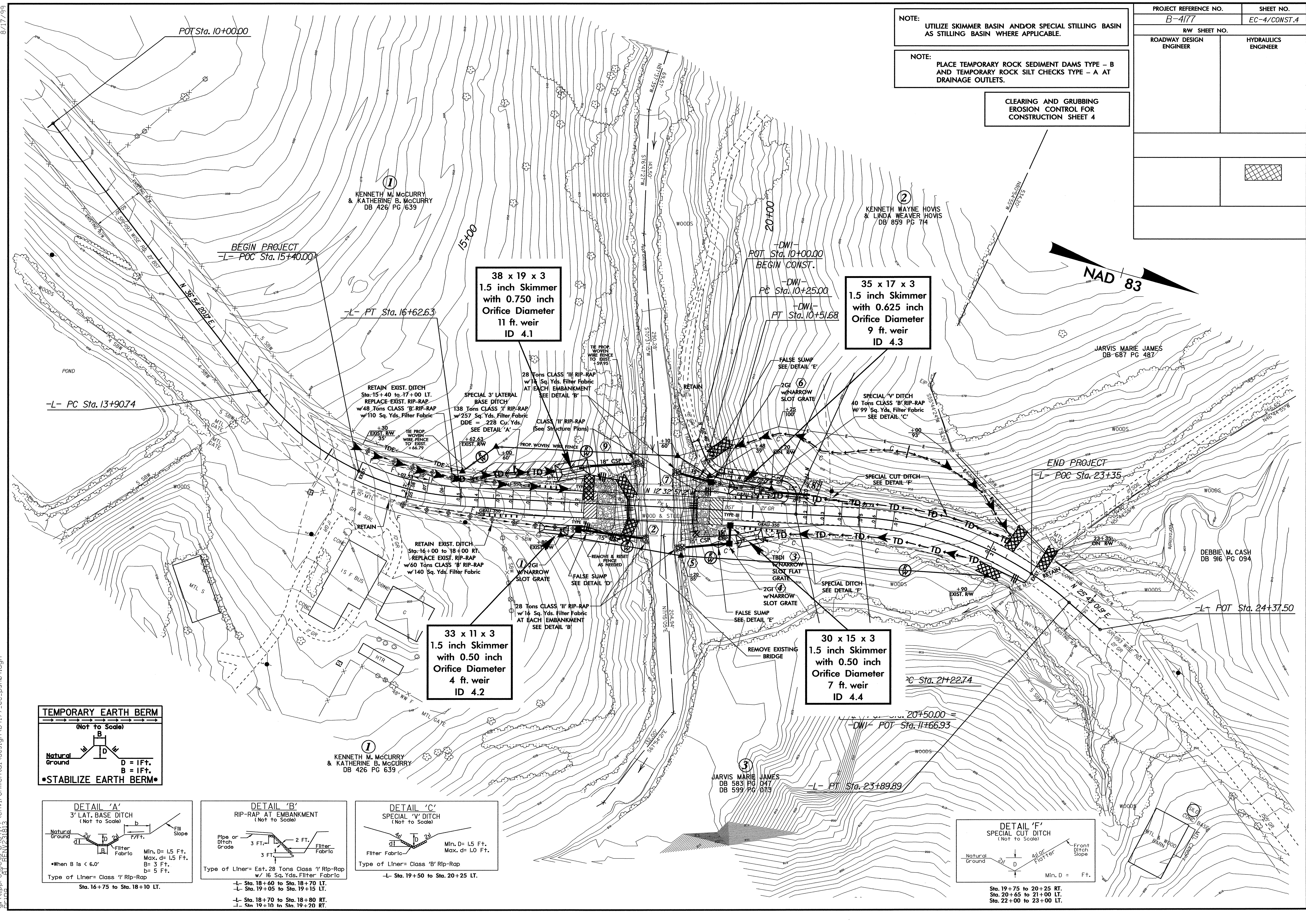
8/17/99

PROJECT REFERENCE NO.	SHEET NO.
B-4177	EC-4/CONST.4
RW SHEET NO.	
ROADWAY DESIGN ENGINEER	HYDRAULICS ENGINEER

NOTE:  
UTILIZE SKIMMER BASIN AND/OR SPECIAL STILLING BASIN AS STILLING BASIN WHERE APPLICABLE.

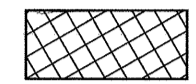
NOTE:  
PLACE TEMPORARY ROCK SEDIMENT DAMS TYPE - B AND TEMPORARY ROCK SILT CHECKS TYPE - A AT DRAINAGE OUTLETS.

CLEARING AND GRUBBING EROSION CONTROL FOR CONSTRUCTION SHEET 4

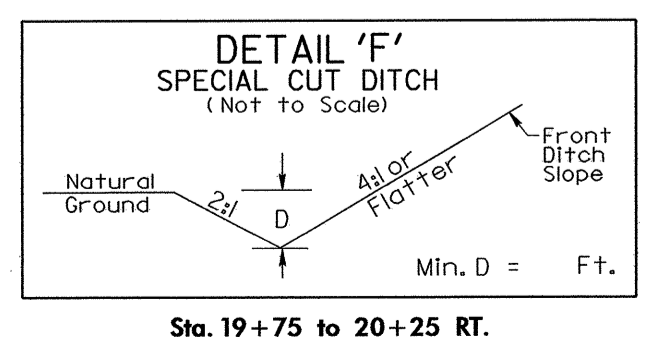
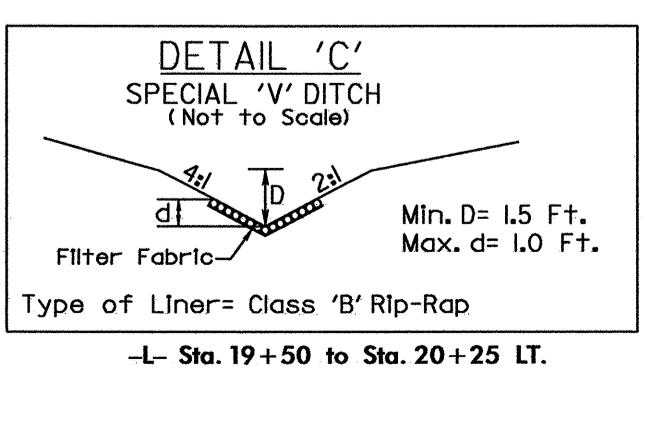
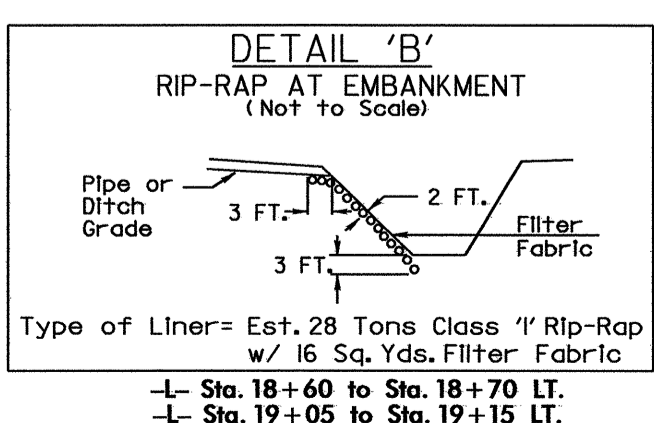
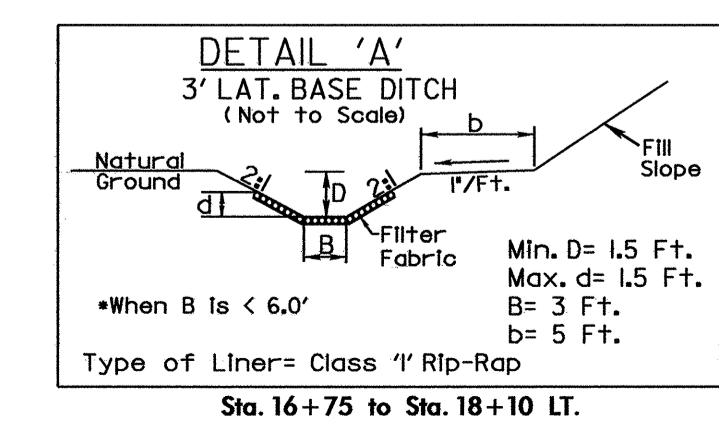
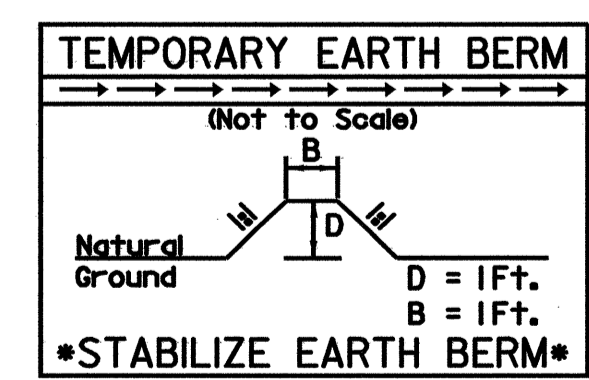
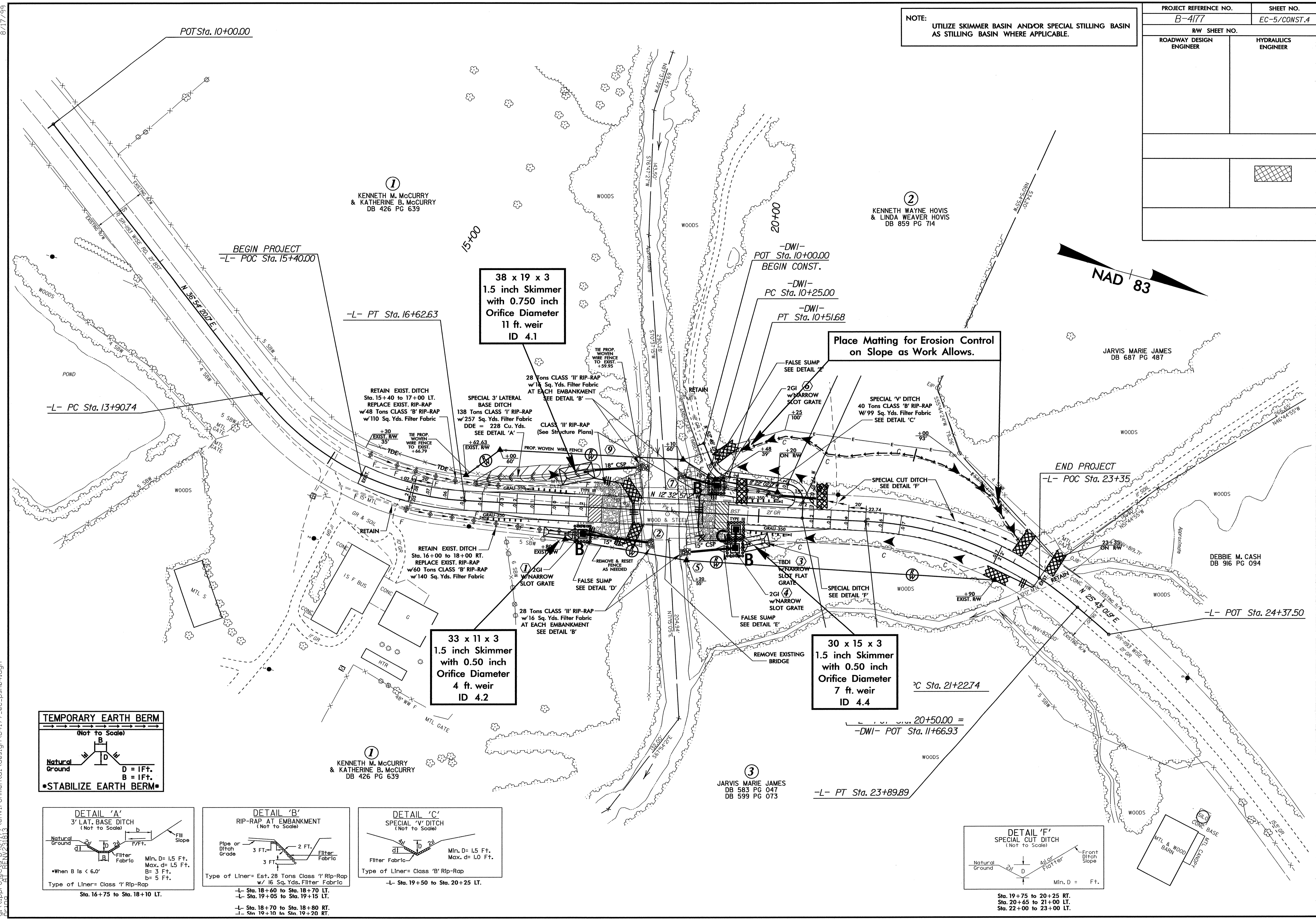


12-SEP-2008 10:44  
S:\projects\ec-4\177\environmental\design\b4177.ec-ps104.dgn  
AT:RAN/2/3/13

8/17/99

PROJECT REFERENCE NO.		SHEET NO.	
B-4177		EC-5/CONST.4	
RW SHEET NO.			
ROADWAY DESIGN ENGINEER		HYDRAULICS ENGINEER	
			

NOTE: UTILIZE SKIMMER BASIN AND/OR SPECIAL STILLING BASIN AS STILLING BASIN WHERE APPLICABLE.



12-SEP-2008 10:45:36 b4177\environmental\design\b4177\_ec\_psh04.dgn