

09/08/99

See Sheet 1-A For Index of Sheets

T.I.P. NO.	SHEET NO.
B-4296	UO-1

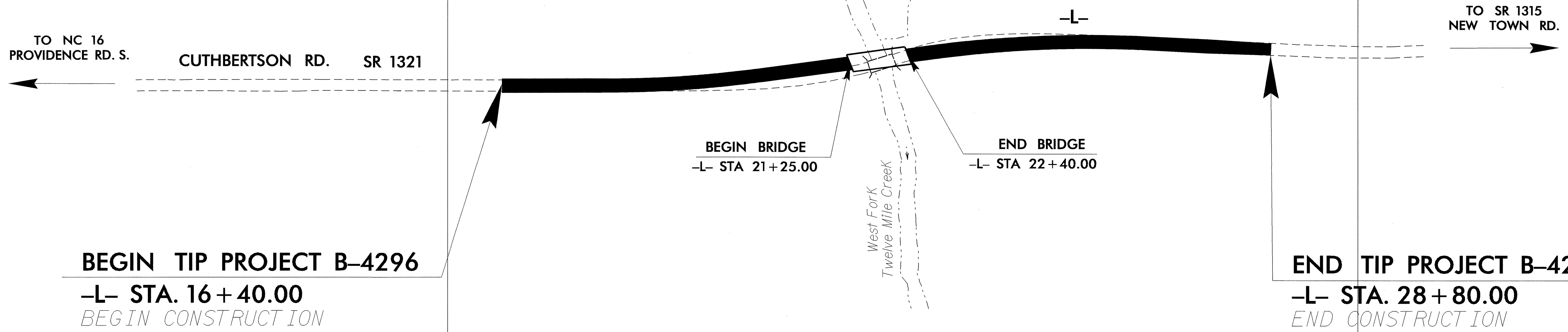
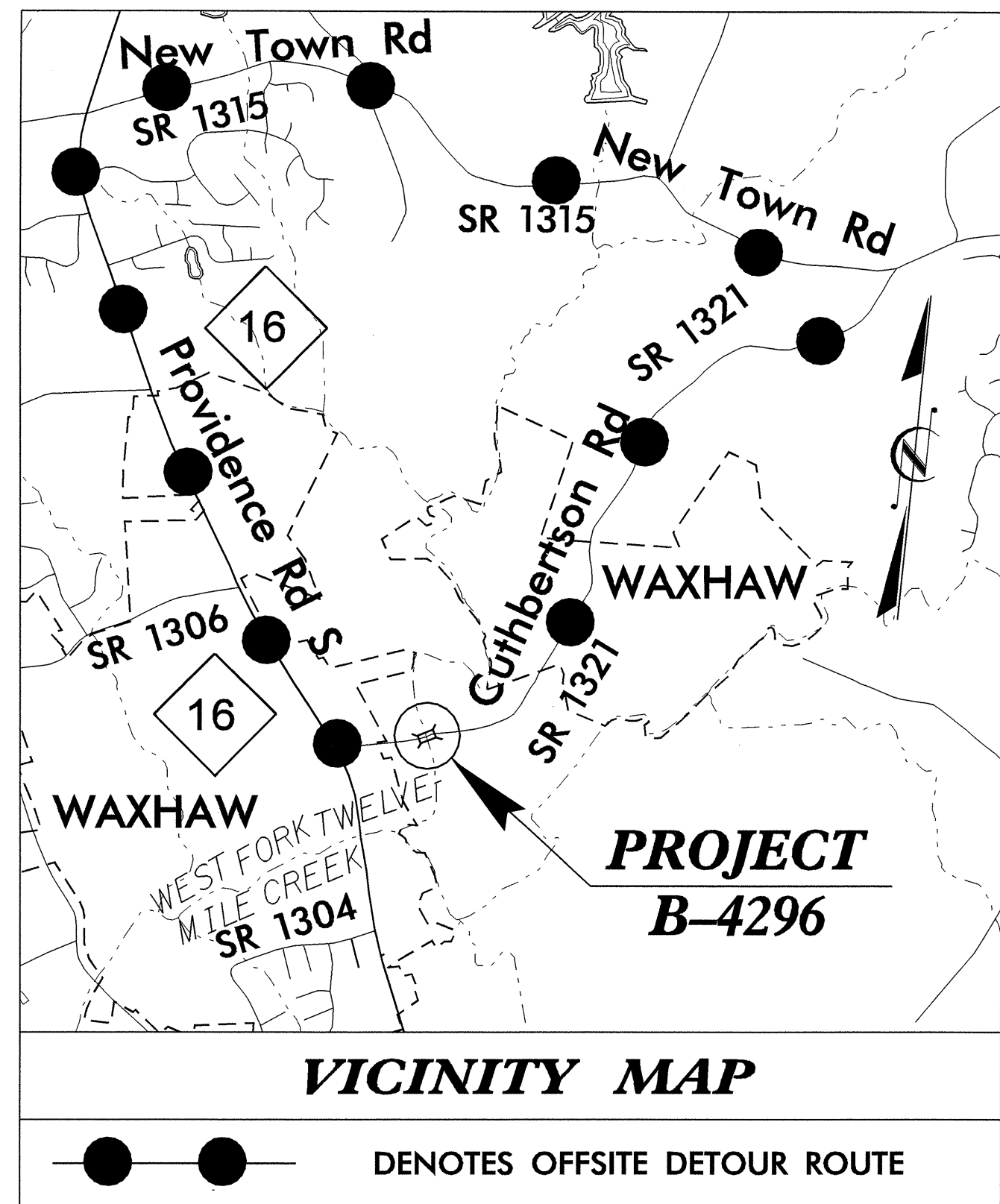
STATE OF NORTH CAROLINA
DIVISION OF HIGHWAYS

**UTILITIES BY OTHERS PLANS
UNION COUNTY**

**LOCATION: BRIDGE NO. 223 OVER WEST FORK TWELVE
MILE CREEK AND APPROACHES ON SR 1321
(CUTHBERTSON ROAD)**

TYPE OF WORK: UTILITIES

**UO-2
4**



TIP B-4296

INDEX OF SHEETS	
SHEET NO.	DESCRIPTION
UO-1	TITLE SHEET
UO-2	UTILITIES BY OTHERS PLAN SHEET

- UTILITY OWNERS ON PROJECT**
- (1) UNION EMC (POWER)
 - (2) PIEDMONT NATURAL GAS
 - (3) WINDSTREAM (TELEPHONE)
 - (4) TIME WARNER CABLE (CATV)
 - (5) UNION COUNTY PUBLIC WORKS (WATER)

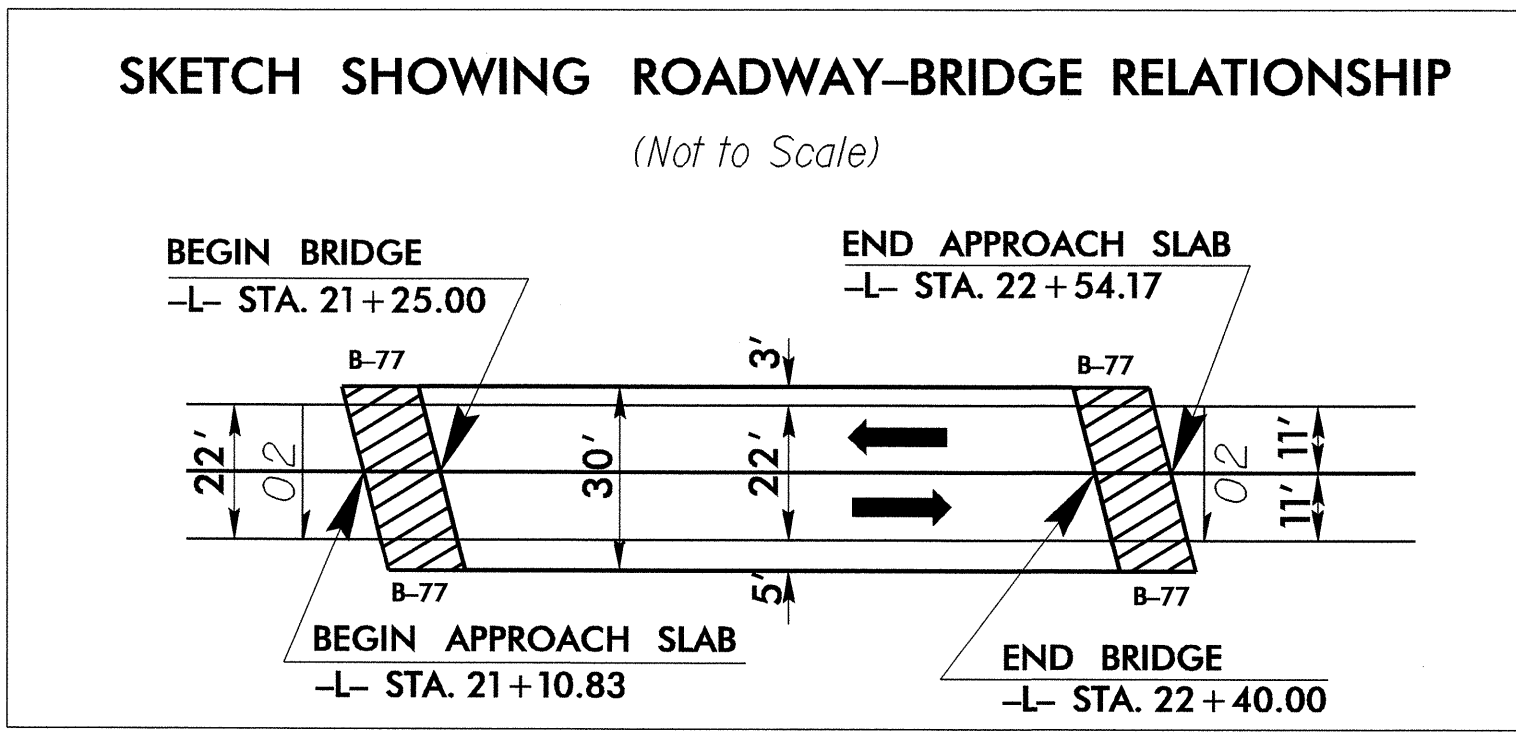
PREPARED IN THE OFFICE OF:
**DIVISION OF HIGHWAYS
DESIGN SERVICES
UTILITY SECTION**

1591 MAIL SERVICES CENTER
RALEIGH, NC 27699-1591
PHONE (919) 259-4128
FAX (919) 259-4119

Roger Worthington, P.E. UTILITIES SECTION ENGINEER
Steve McKee, P.E. UTILITIES SQUAD LEADER PROJECT ENGINEER
Alonza Yancey UTILITIES PROJECT DESIGNER

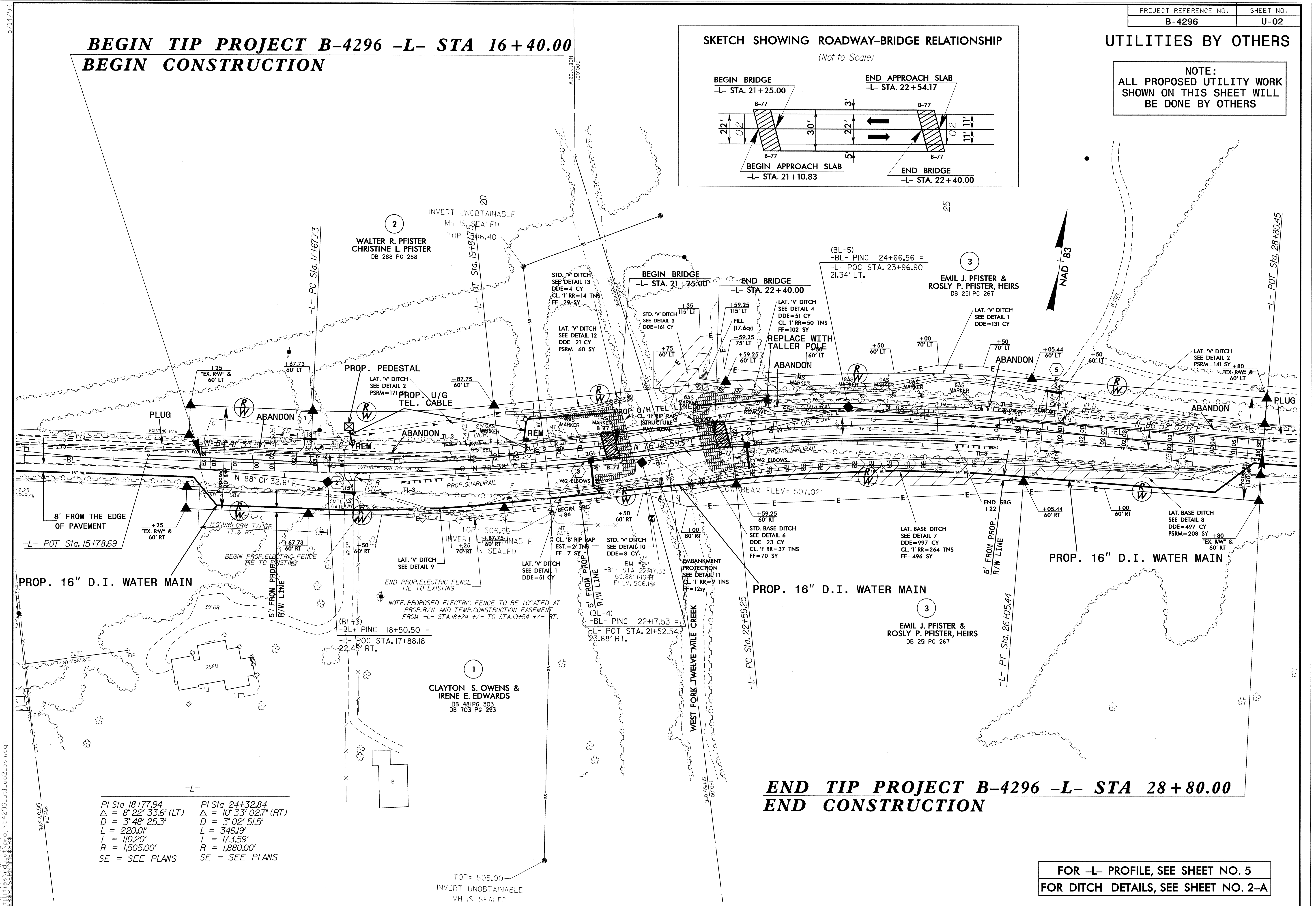
09-SEP-2008 11:48
r:\utilities\ydy\ut\proj\b-4296-ut-title_uo1_psh.dgn
\$\$\$\$\$USERNAME\$\$\$\$\$

**BEGIN TIP PROJECT B-4296 -L- STA 16+40.00
BEGIN CONSTRUCTION**



UTILITIES BY OTHERS

**NOTE:
ALL PROPOSED UTILITY WORK
SHOWN ON THIS SHEET WILL
BE DONE BY OTHERS**



PI Sta 18+77.94 Δ = 8° 22' 33.6" (LT) D = 3' 48' 25.3" L = 220.0' T = 110.20' R = 1,505.00' SE = SEE PLANS	PI Sta 24+32.84 Δ = 10° 33' 02.7" (RT) D = 3' 02' 51.5" L = 346.19' T = 173.59' R = 1,880.00' SE = SEE PLANS
--	--

**END TIP PROJECT B-4296 -L- STA 28+80.00
END CONSTRUCTION**

**FOR -L- PROFILE, SEE SHEET NO. 5
FOR DITCH DETAILS, SEE SHEET NO. 2-A**

09-SEP-2008 11:23
33833.DWG
C:\PROJECTS\B-4296\U-02-psht.dgn