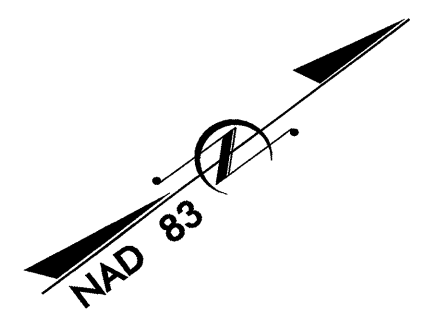
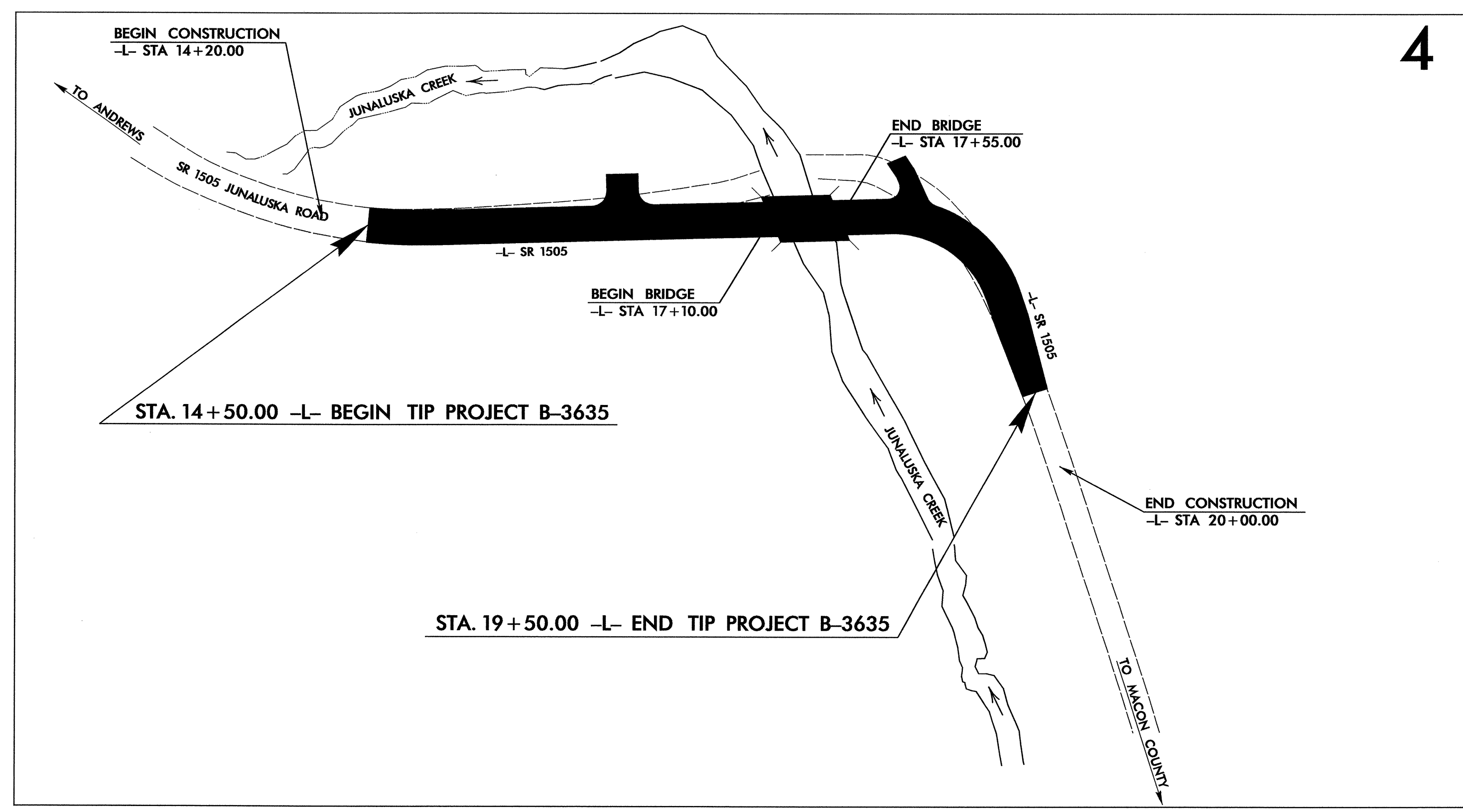


TIP PROJECT: B-3635

STATE OF NORTH CAROLINA
 DIVISION OF HIGHWAYS
 PLAN FOR PROPOSED
 HIGHWAY EROSION CONTROL
CHEROKEE COUNTY



LOCATION: BRIDGE NO. 26 OVER JUNALUSKA CREEK AND APPROACHES ON SR 1505 (JUNALUSKA ROAD)
TYPE OF WORK: GRADING, DRAINAGE, PAVING, AND STRUCTURE



| STATE | STATE PROJECT REFERENCE NO. | SHEET NO. | TOTAL SHEETS |
|-----------------|-----------------------------|-------------|--------------|
| N.C. | B-3635 | EC-1 | |
| STATE PROJ. NO. | F.A. PROJ. NO. | DESCRIPTION | |
| | | | |
| | | | |
| | | | |
| | | | |
| | | | |

EROSION AND SEDIMENT CONTROL MEASURES

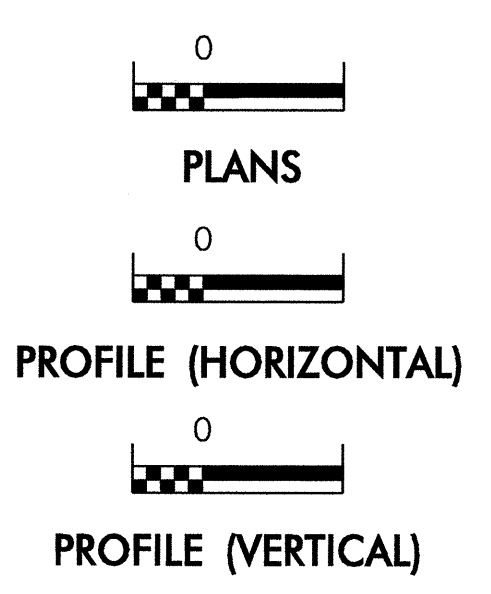
| Sed. # | Description | Symbol |
|---------|--------------------------------------|--------|
| 1630.05 | Temporary Silt Ditch | TD |
| 1630.05 | Temporary Diversion | TD |
| 1605.01 | Temporary Silt Fence | |
| 1606.01 | Special Sediment Control Fence | ~ ~ ~ |
| 1622.01 | Temporary Berms and Slope Drains | ~ ~ ~ |
| 1630.01 | Riser Basin | ⊙ |
| 1630.01 | Silt Basin Type B | ⊙ |
| 1633.01 | Temporary Rock Silt Check Type-A | ⊗ |
| 1633.01 | Temporary Rock Silt Check Type-B | ▶ |
| 1633.01 | Wattle | ⌒ |
| 1634.01 | Temporary Rock Sediment Dam Type-A | ⊗ |
| 1634.02 | Temporary Rock Sediment Dam Type-B | ⊗ |
| 1635.01 | Rock Pipe Inlet Sediment Trap Type-A | ⊕ |
| 1635.02 | Rock Pipe Inlet Sediment Trap Type-B | ⊕ |
| 1630.04 | Stilling Basin | ⊕ |
| 1630.06 | Special Stilling Basin | ⊕ |
| 1632.01 | Rock Inlet Sediment Trap: Type A | A |
| 1632.02 | Type B | B |
| 1632.03 | Type C | C |
| | Skimmer Basin | ⊕ |
| | Tiered Skimmer Basin | ⊕ |
| | Infiltration Basin | ⊕ |

THIS PROJECT CONTAINS EROSION CONTROL PLANS FOR CLEARING AND GRUBBING PHASE OF CONSTRUCTION.

THIS PROJECT HAS BEEN DESIGNED TO SENSITIVE WATERSHED STANDARDS.

ENVIRONMENTALLY SENSITIVE AREA(S) EXIST ON THIS PROJECT
Refer To E. C. Special Provisions for Special Considerations.

GRAPHIC SCALE



ROADSIDE ENVIRONMENTAL UNIT
 DIVISION OF HIGHWAYS
 STATE OF NORTH CAROLINA

Prepared In the Office of:
ROADSIDE ENVIRONMENTAL UNIT
 1 South Wilmington St.
 Raleigh, NC 27611
2006 STANDARD SPECIFICATIONS

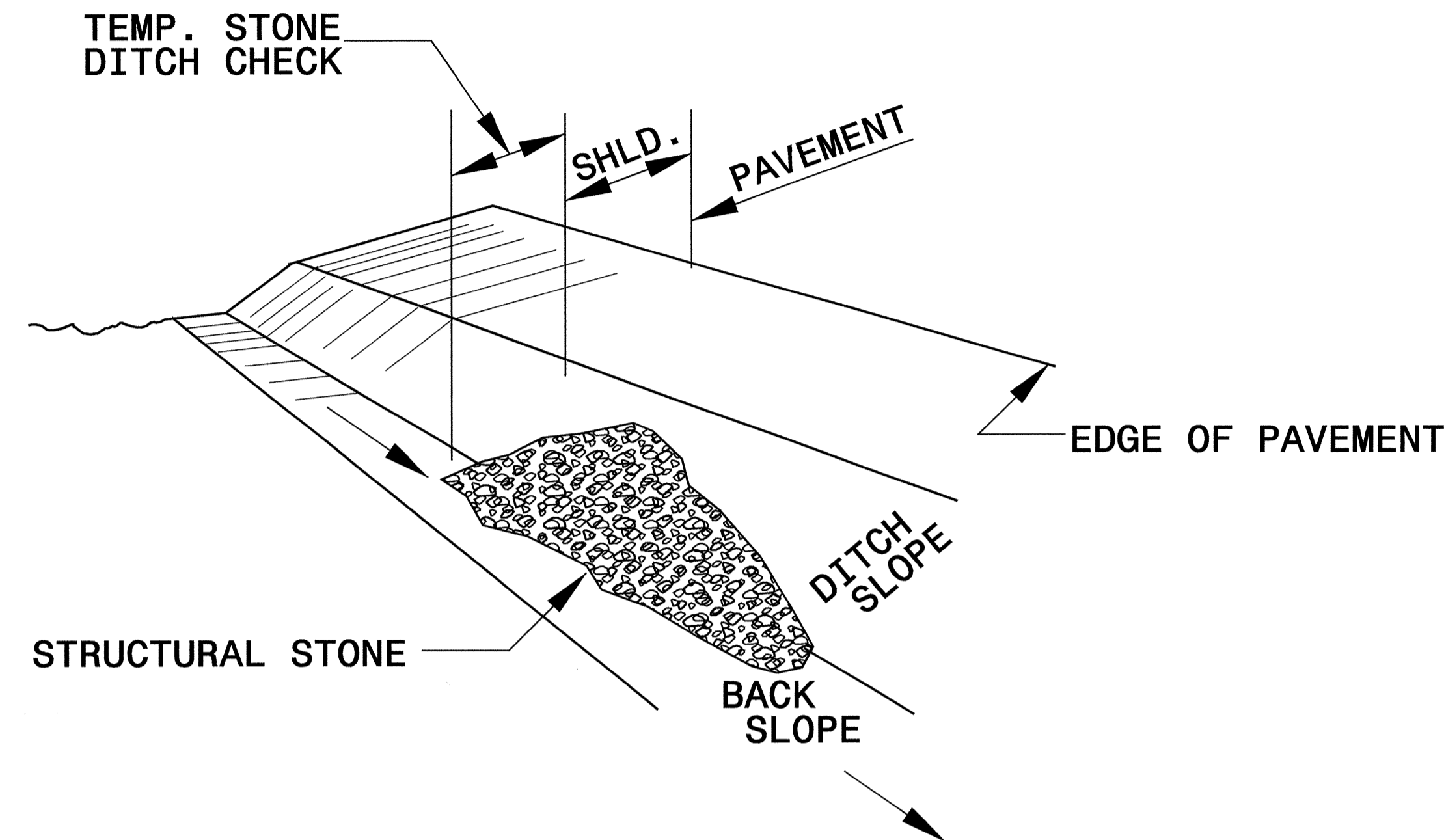
Roadway Standard Drawings
 The following roadway english standards as appear in "Roadway Standard Drawings"- Roadway Design Unit - N. C. Department of Transportation - Raleigh, N. C., dated July 18, 2006 and the latest revision thereto are applicable to this project and by reference hereby are considered a part of these plans.

- | | |
|--------------------------------------|--|
| 1605.01 Temporary Silt Fence | 1632.03 Rock Inlet Sediment Trap Type C |
| 1607.01 Gravel Construction Entrance | 1633.01 Temporary Rock Silt Check Type A |
| 1630.05 Temporary Diversion | |

3-Jul-2008 6:46
 tipr\p\ec-1\B-3635-ec-1.dwg
 J:\tipr\p\ec-1\B-3635-ec-1.dwg

| | |
|---------------------------------|---------------------|
| PROJECT REFERENCE NO. B-3635 | SHEET NO. EC-2 |
| RW SHEET NO. | |
| ROADWAY DESIGN ENGINEER | HYDRAULICS ENGINEER |

TEMPORARY ROCK SILT CHECK TYPE 'B' DETAIL

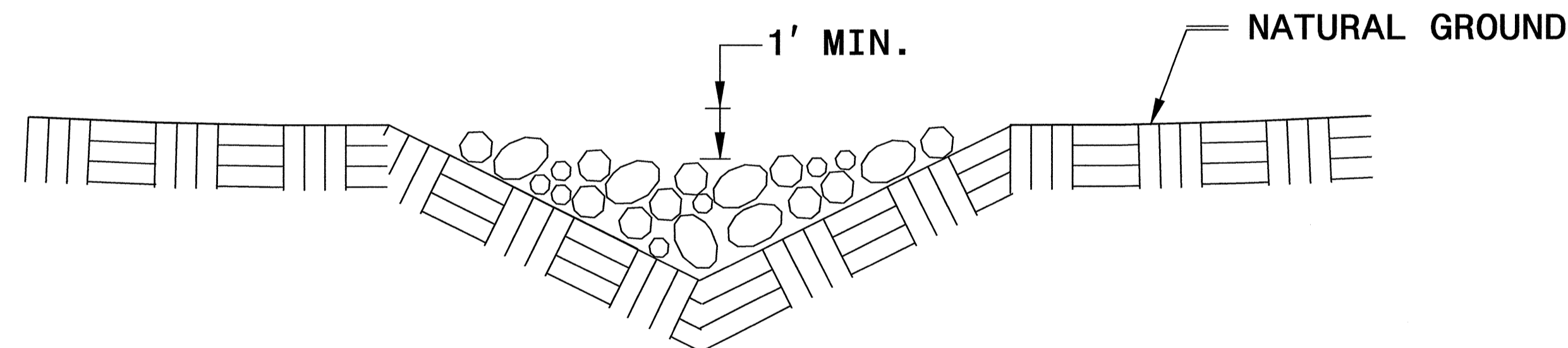


ISOMETRIC VIEW

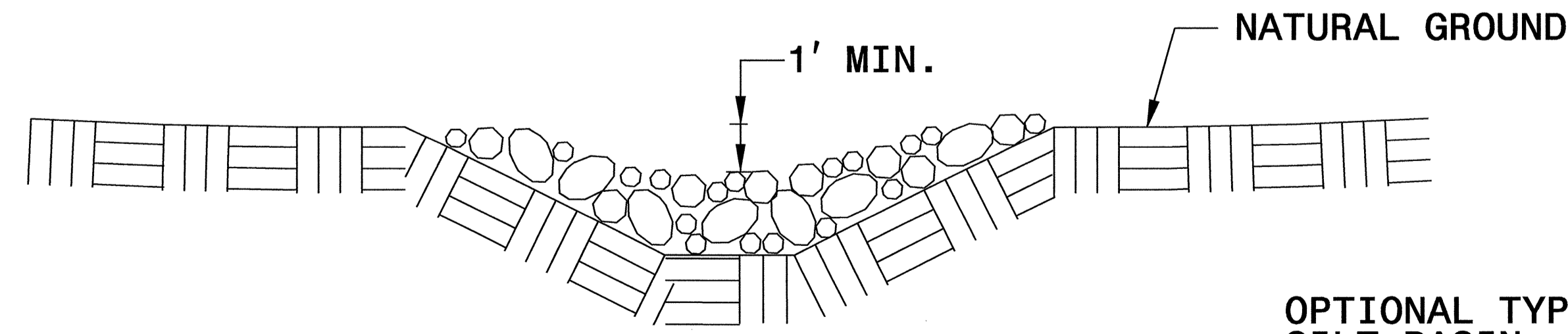
NOTES:

USE CLASS 'B' EROSION CONTROL STONE FOR STRUCTURAL STONE.

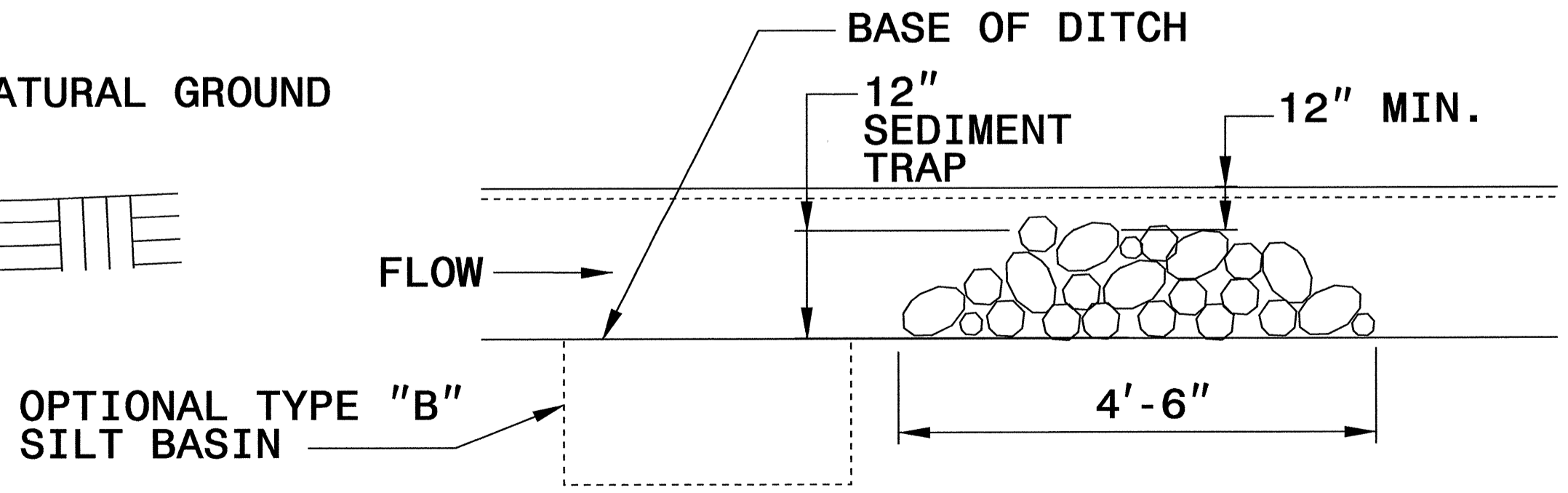
THE ENGINEER MAY DIRECT THE OPTION OF CLASS "A" STONE FOR SITES HAVING LESS THAN ONE (1) ACRE DRAINAGE AREA AND A DITCH GRADE LESS THAN 3%.



CROSS SECTION VEE DITCH



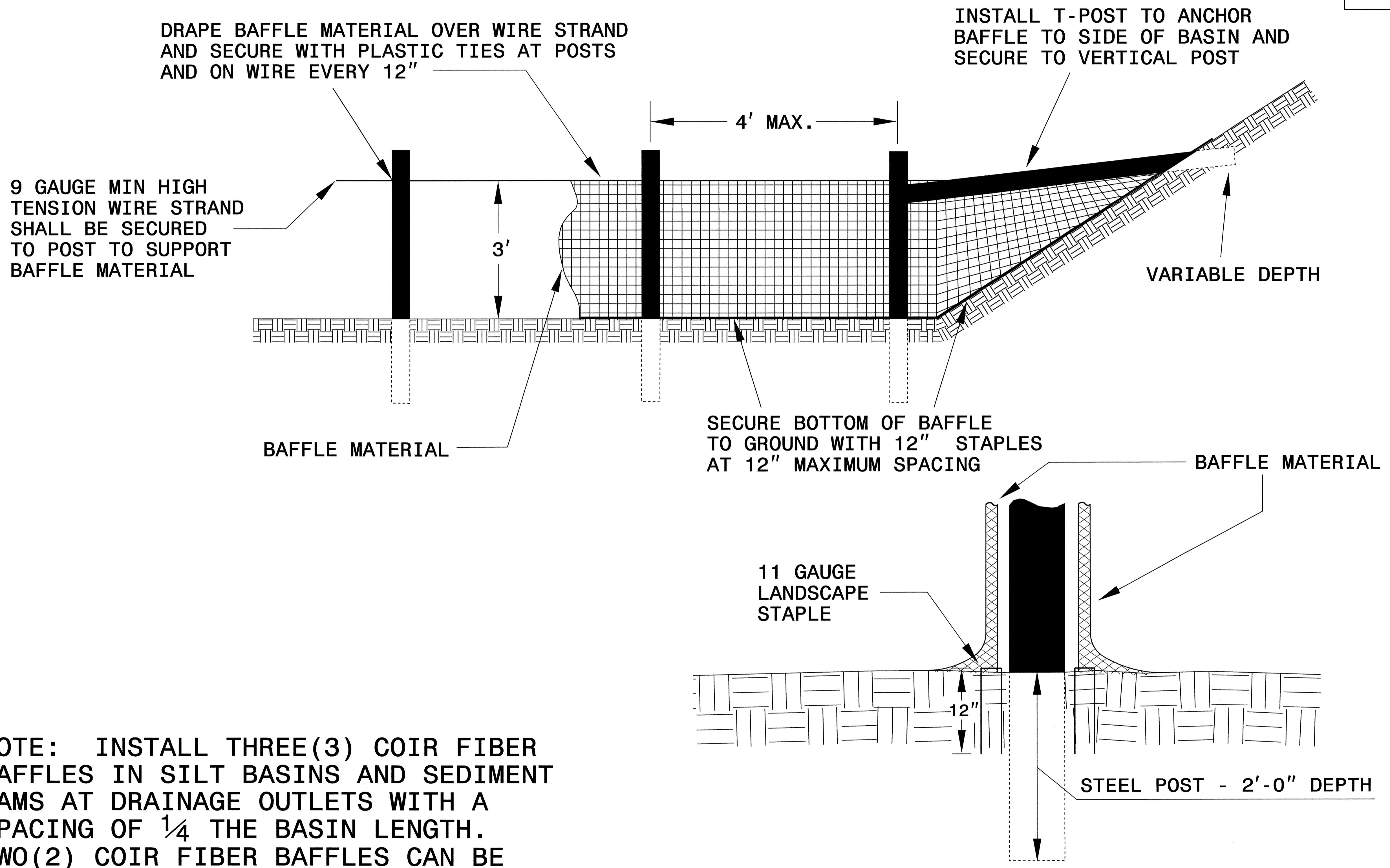
CROSS SECTION TRAPEZOIDAL DITCH



ELEVATION VIEW

| | |
|---------------------------------|---------------------|
| PROJECT REFERENCE NO. B-3635 | SHEET NO. EC-2A |
| RW SHEET NO. | |
| ROADWAY DESIGN ENGINEER | HYDRAULICS ENGINEER |

COIR FIBER BAFFLE DETAIL

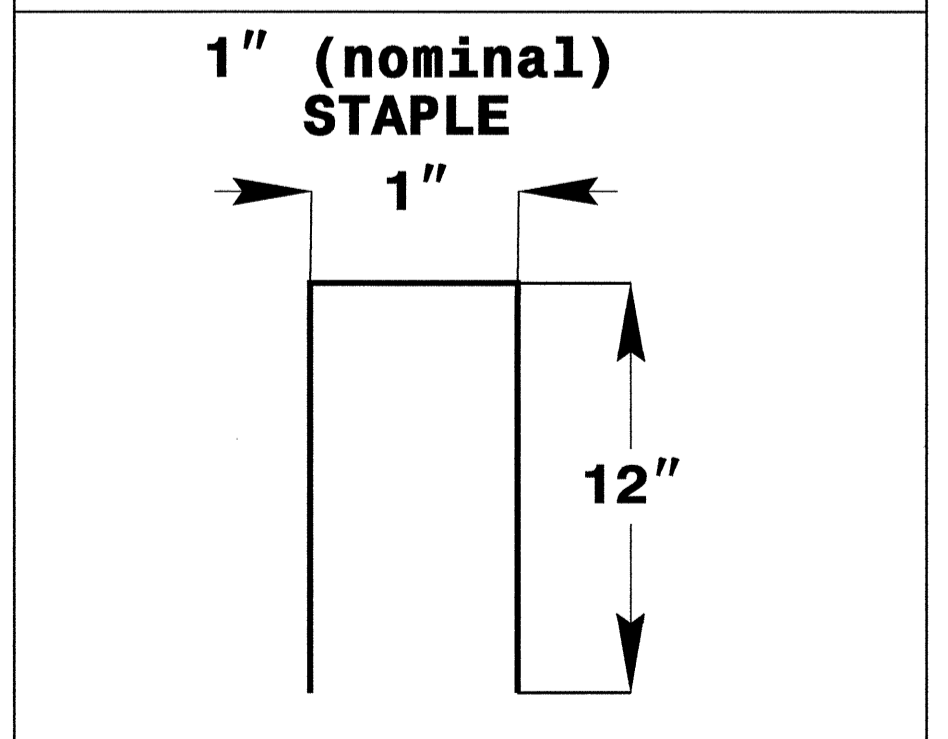
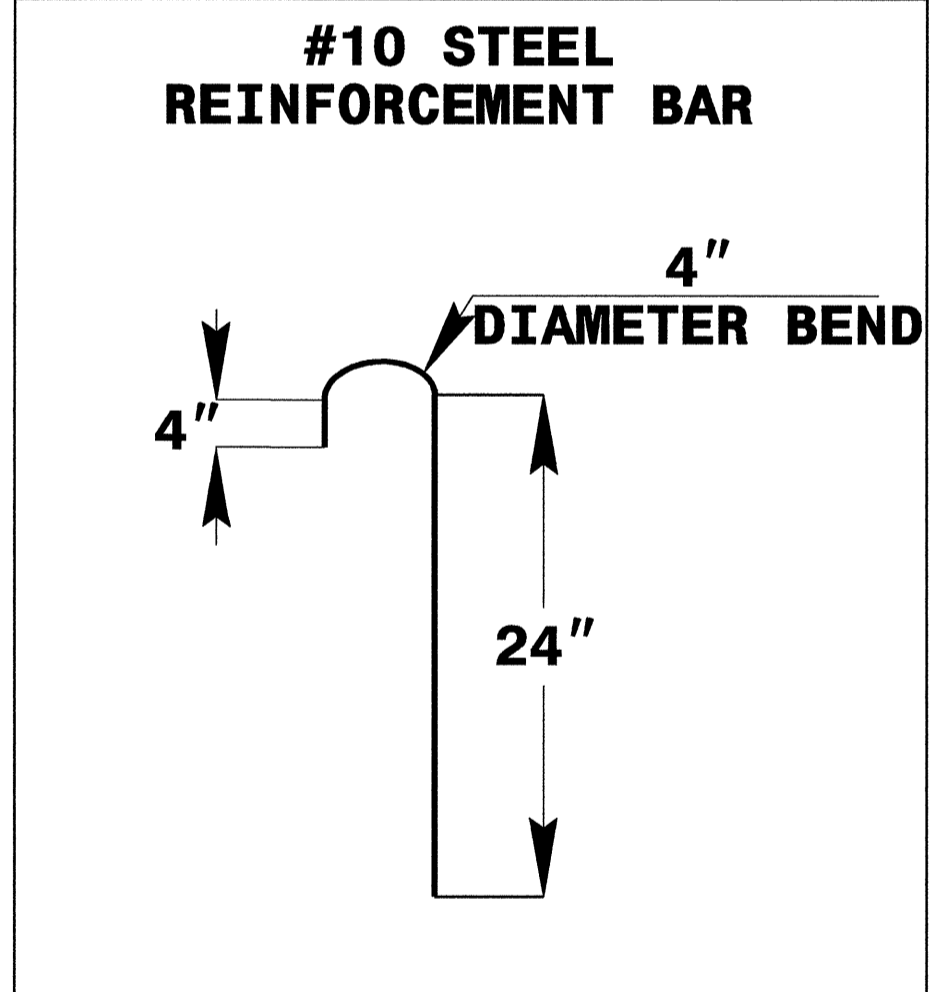
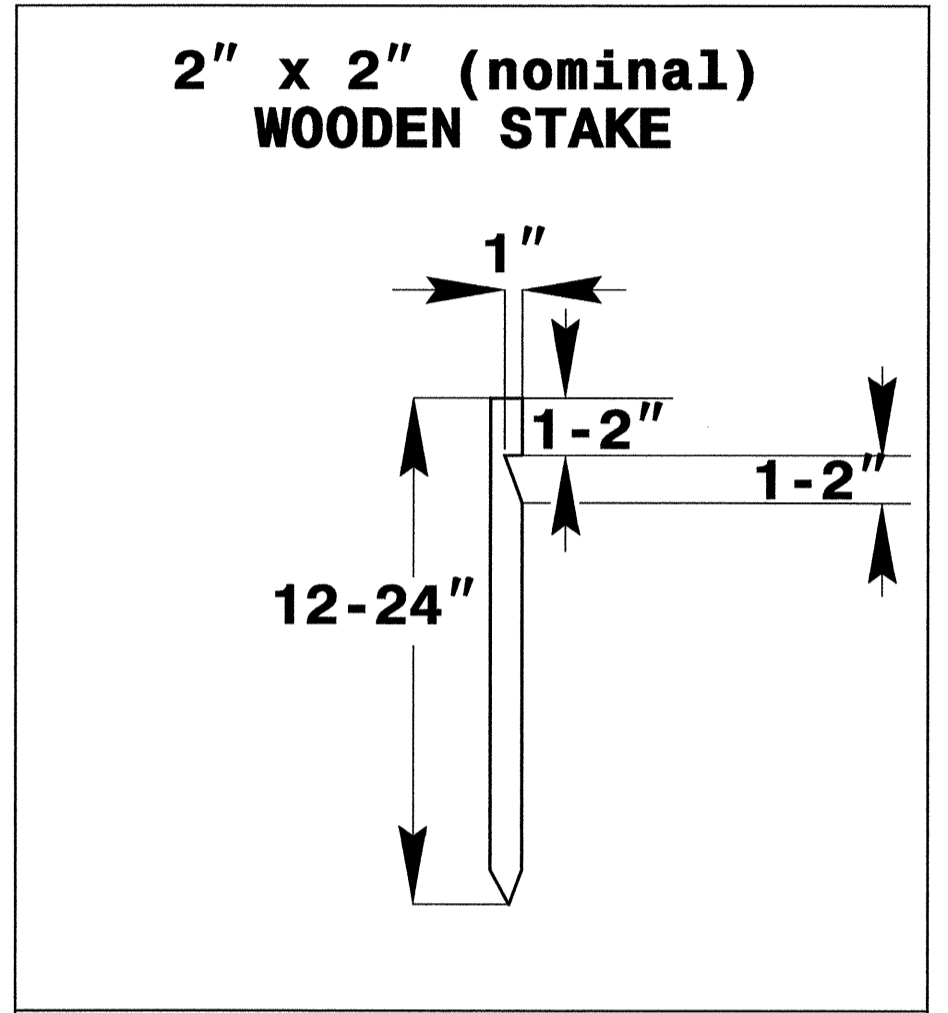
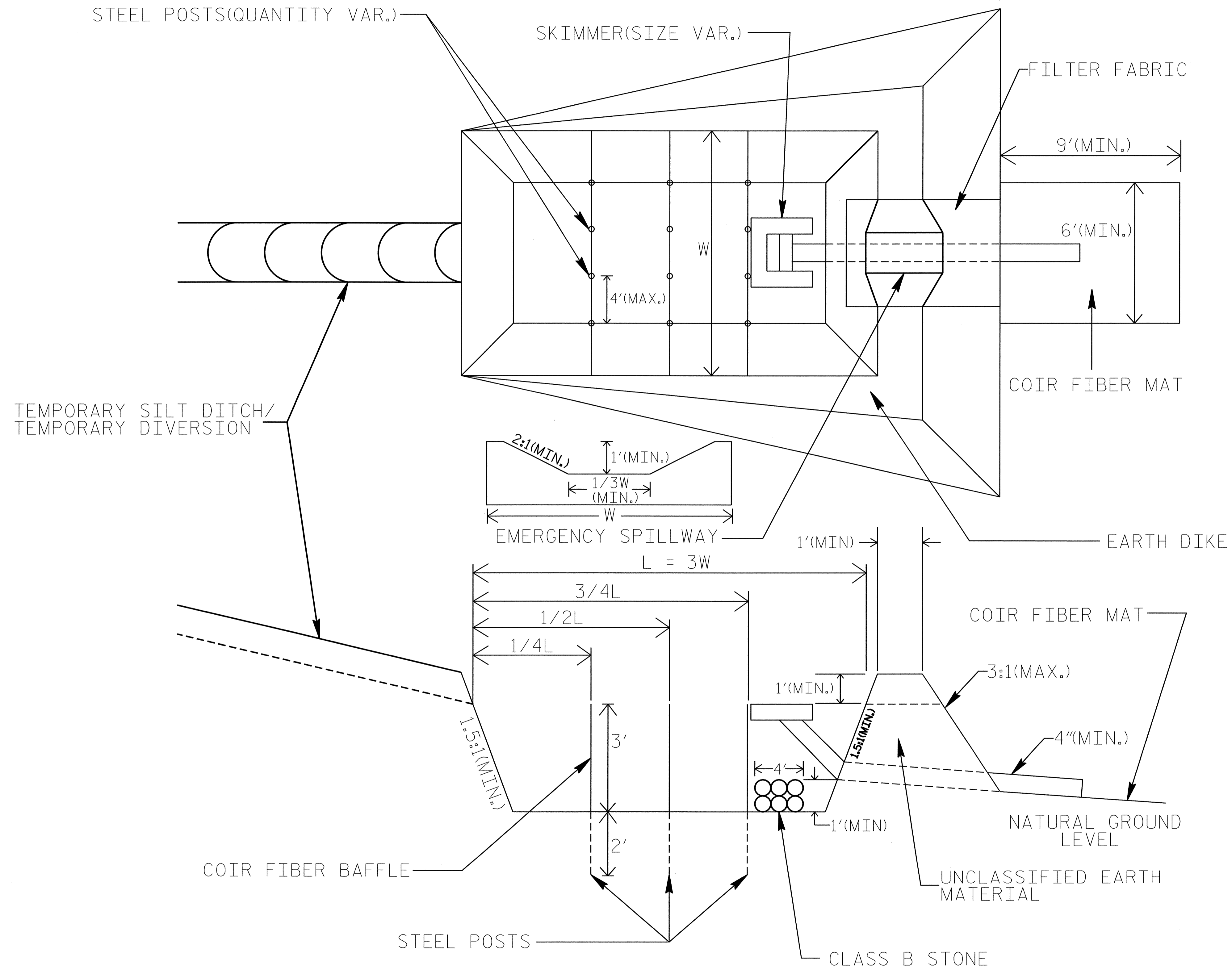


NOTE: INSTALL THREE(3) COIR FIBER BAFFLES IN SILT BASINS AND SEDIMENT DAMS AT DRAINAGE OUTLETS WITH A SPACING OF $\frac{1}{4}$ THE BASIN LENGTH. TWO(2) COIR FIBER BAFFLES CAN BE INSTALLED IN SILT BASINS AND DAMS LESS THAN 20 FT. IN LENGTH WITH A SPACING OF $\frac{1}{3}$ THE BASIN LENGTH.

BAFFLE MATERIAL SHALL BE SECURED TO THE BOTTOM AND SIDES OF BASIN USING 12" LANDSCAPE STAPLES

SKIMMER BASIN WITH BAFFLES DETAIL

| | |
|---------------------------------|---------------------|
| PROJECT REFERENCE NO. B-3635 | SHEET NO. EC-2B |
| RW SHEET NO. | |
| ROADWAY DESIGN ENGINEER | HYDRAULICS ENGINEER |

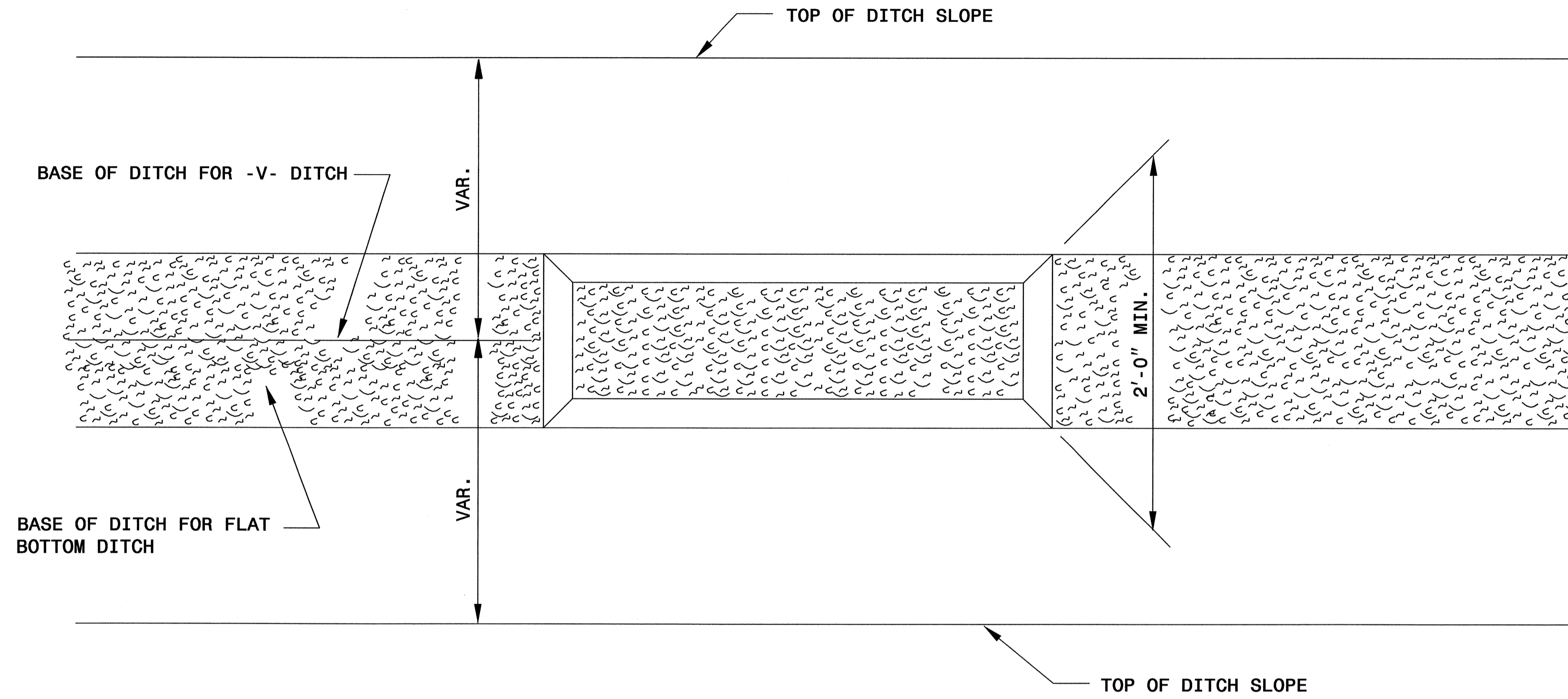


COIR FIBER MAT ANCHOR OPTIONS

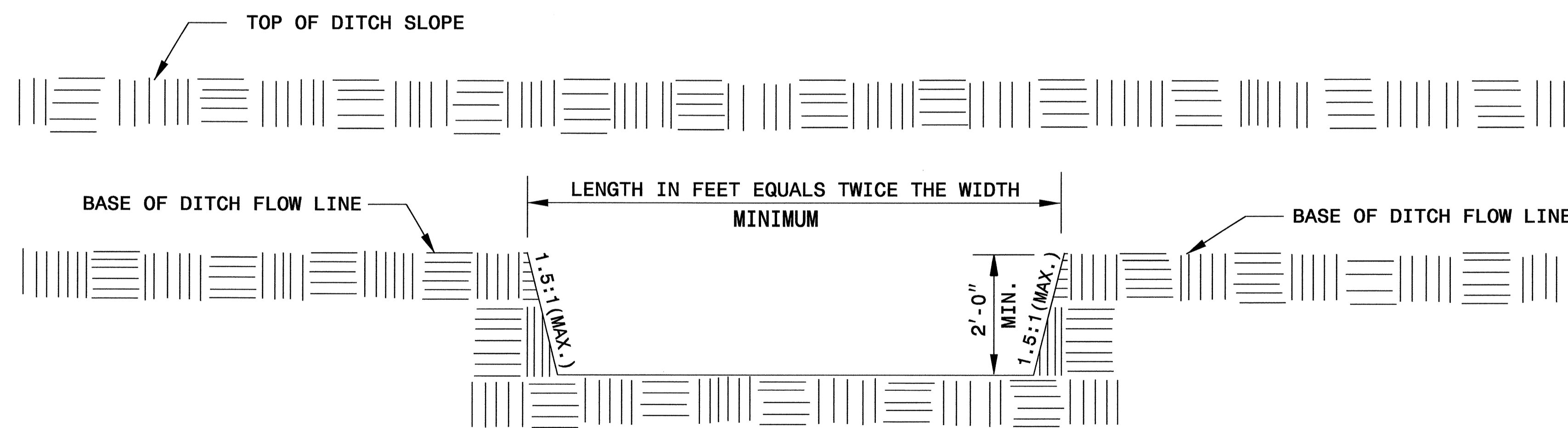
- NOTES:**
1. SEED AND PLACE MATTING FOR EROSION CONTROL ON SIDESLOPES.
 2. LIMIT EARTH DIKE HEIGHT TO 5 FT.

| | |
|--|---------------------------|
| PROJECT REFERENCE NO. <i>B-3635</i> | SHEET NO. <i>EC-2C</i> |
| RW SHEET NO. | |
| ROADWAY DESIGN ENGINEER | HYDRAULICS ENGINEER |

SILT BASIN 'B' DETAIL



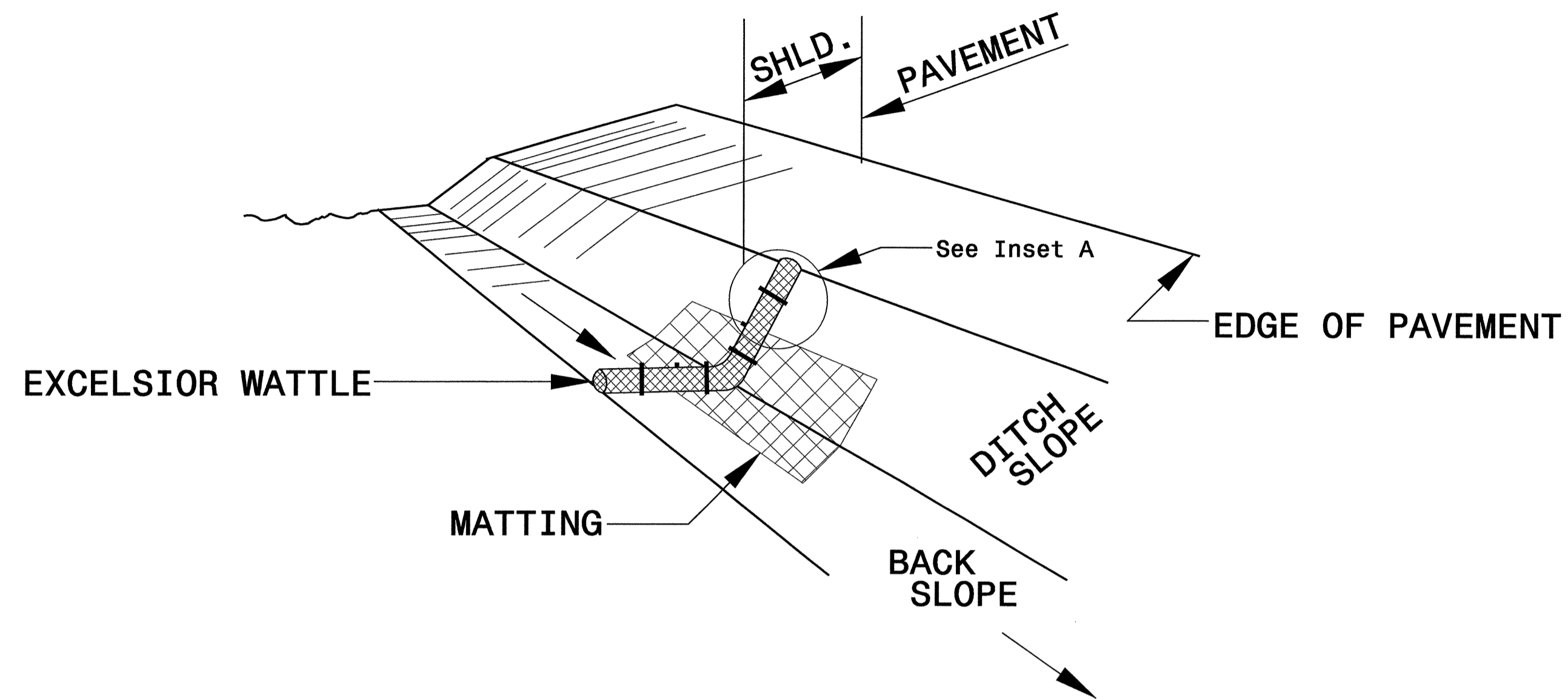
PLAN



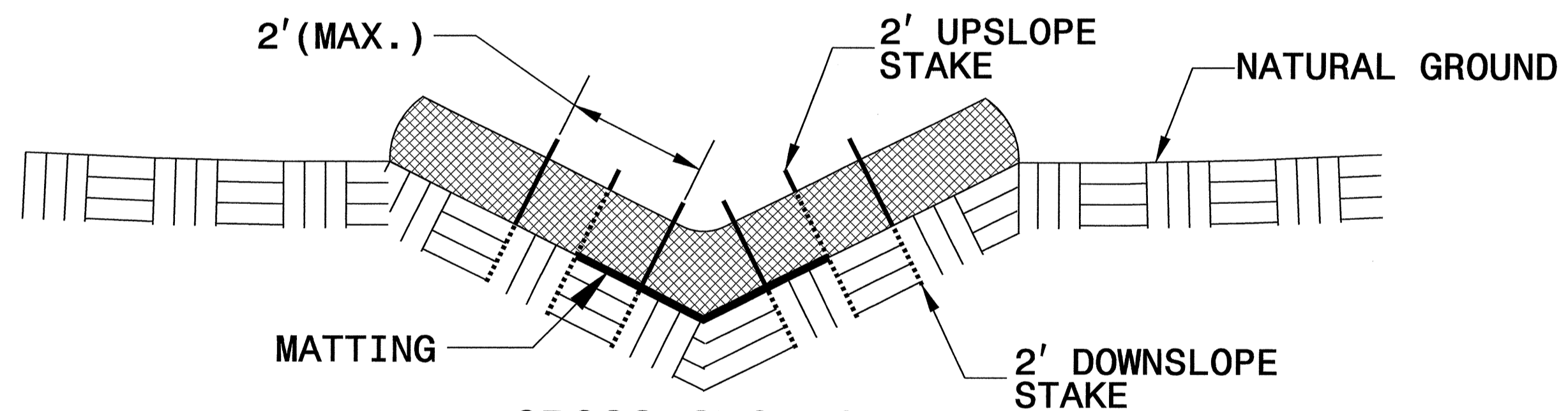
ELEVATION

| | |
|---------------------------------|---------------------|
| PROJECT REFERENCE NO. B-3635 | SHEET NO. EC-2D |
| RW SHEET NO. | |
| ROADWAY DESIGN ENGINEER | HYDRAULICS ENGINEER |

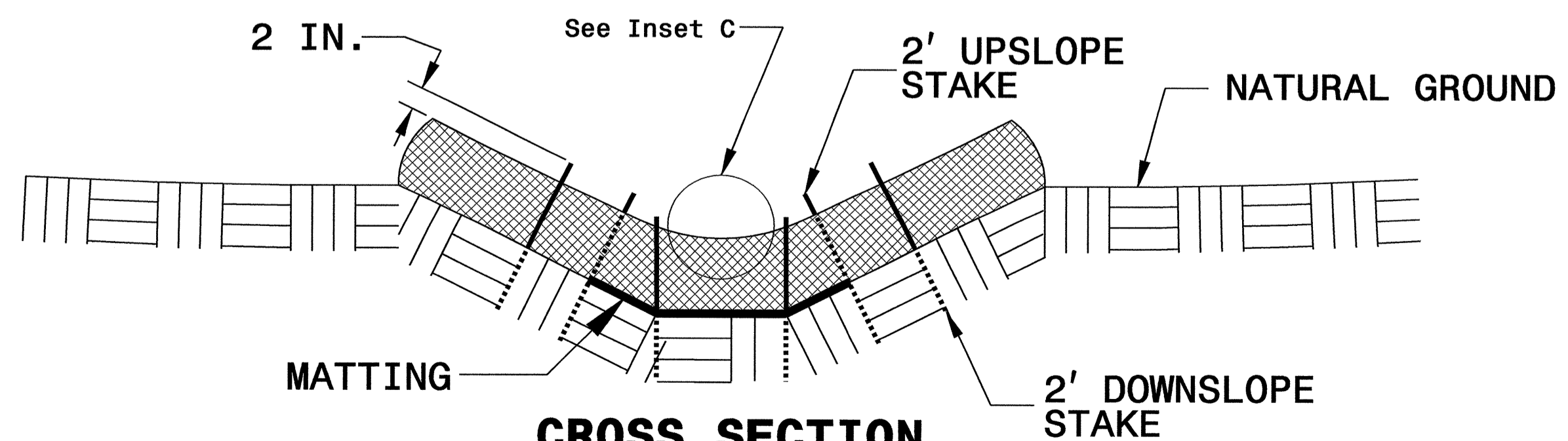
WATTLE WITH POLYACRYLAMIDE DETAIL



ISOMETRIC VIEW



CROSS SECTION VEE DITCH



CROSS SECTION TRAPEZOIDAL DITCH

NOTES:

USE MINIMUM 12 IN. DIAMETER EXCELSIOR WATTLE.

USE 2 FT. WOODEN STAKES WITH A 2 IN. BY 2 IN. CROSS SECTION.

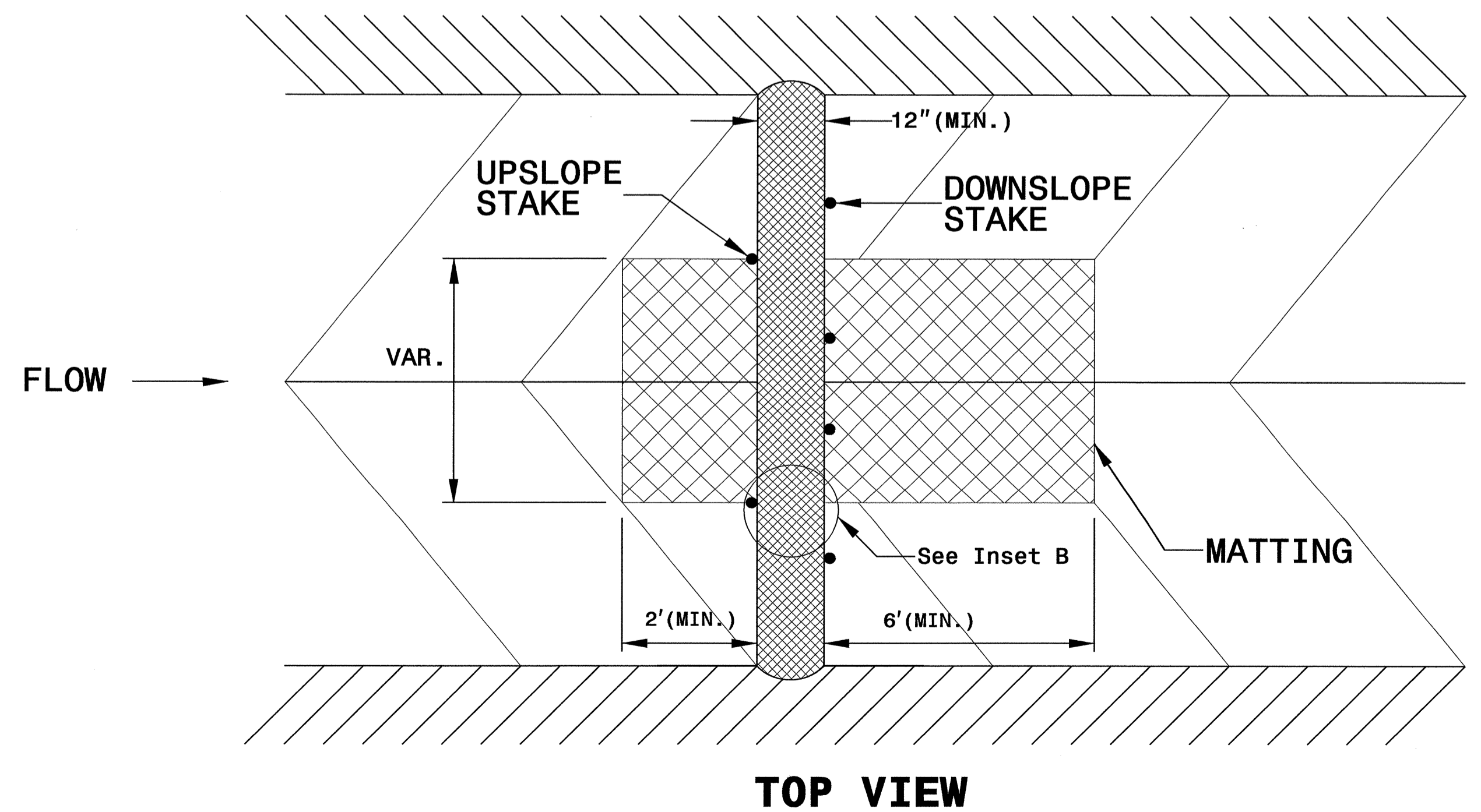
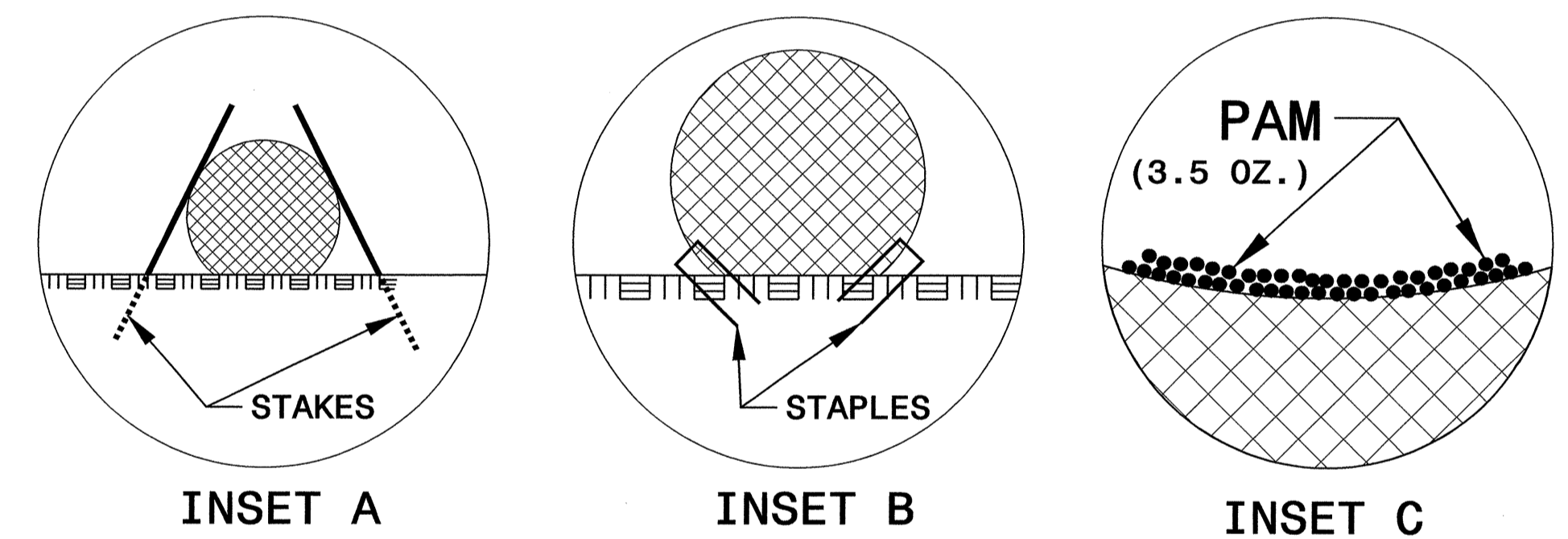
INSTALL A MINIMUM OF 2 UPSLOPE STAKES AND 4 DOWNSLOPE STAKES AT AN ANGLE TO WEDGE WATTLE TO BOTTOM OF DITCH.

PROVIDE STAPLES MADE OF 0.125 IN. DIAMETER STEEL WIRE FORMED INTO A U SHAPE NOT LESS THAN 12" IN LENGTH.

INSTALL STAPLES APPROXIMATELY EVERY 1 LINEAR FOOT ON BOTH SIDES OF WATTLE AND AT EACH END TO SECURE IT TO THE SOIL.

INSTALL MATTING IN ACCORDANCE WITH SECTION 1631 OF THE STANDARD SPECIFICATIONS.

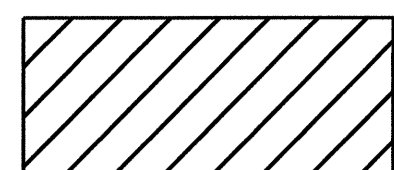
INITIALLY APPLY 3.5 OUNCES OF ANIONIC OR NEUTRALLY CHARGED POLYACRYLAMIDE (PAM) OVER WATTLE WHERE WATER WILL FLOW AND AFTER EVERY RAINFALL EVENT THAT IS EQUAL TO OR EXCEEDS 0.25 IN.



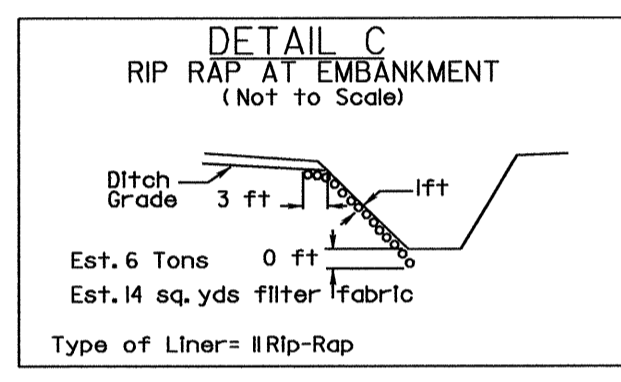
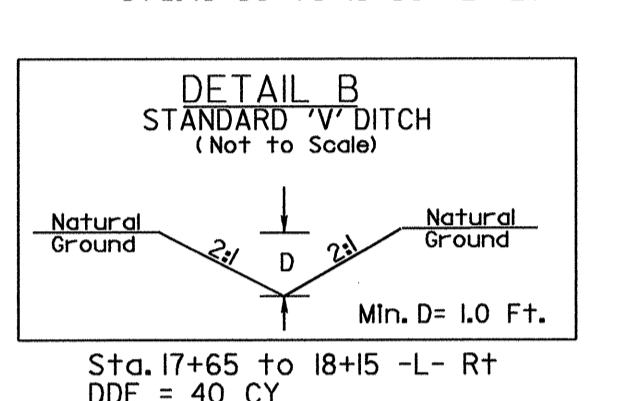
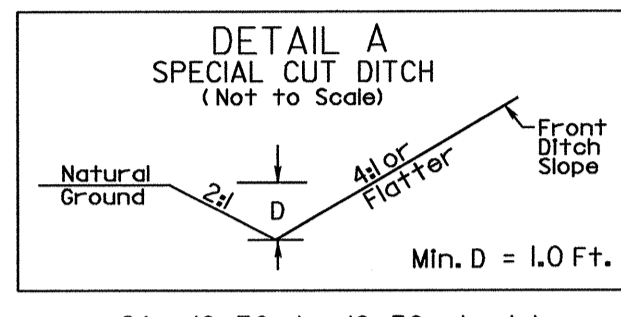
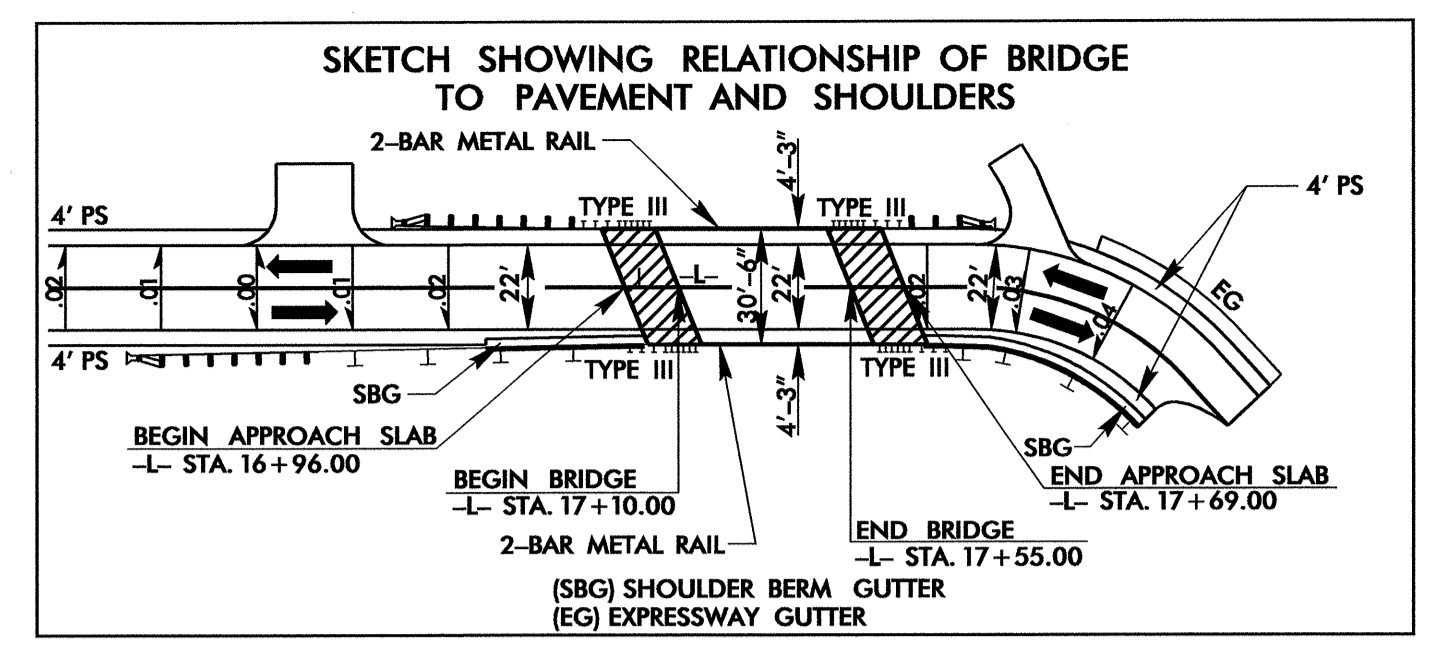
| | |
|-------------------------|---------------------|
| PROJECT REFERENCE NO. | SHEET NO. |
| B-3635 | EC-4/CONST.4 |
| RW SHEET NO. | |
| ROADWAY DESIGN ENGINEER | HYDRAULICS ENGINEER |

CLEARING AND GRUBBING
EROSION CONTROL FOR
CONSTRUCTION SHEET 4

NOTE:
PLACE TEMPORARY ROCK SEDIMENT DAMS TYPE - B
AND TEMPORARY ROCK SILT CHECKS TYPE - A AT
DRAINAGE OUTLETS.

 ENVIRONMENTALLY SENSITIVE AREA
SEE PROJECT SPECIAL PROVISIONS

NOTE:
UTILIZE TEMPORARY ROCK SILT CHECKS
TYPE - A AND SKIMMER BASINS
AS STILLING BASIN WHERE APPLICABLE.



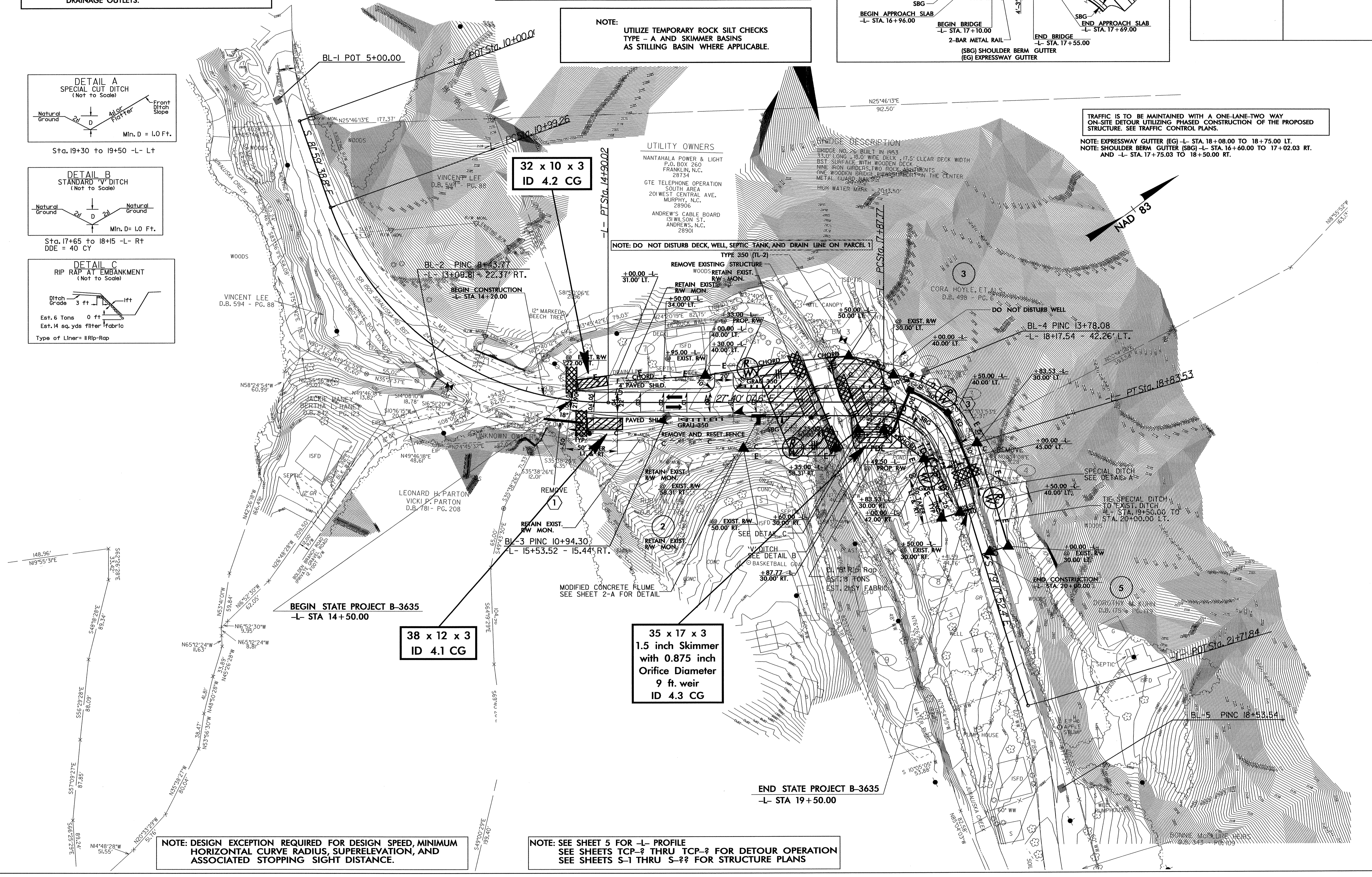
TRAFFIC IS TO BE MAINTAINED WITH A ONE-LANE-TWO WAY
ON-SITE DETOUR UTILIZING PHASED CONSTRUCTION OF THE PROPOSED
STRUCTURE. SEE TRAFFIC CONTROL PLANS.

NOTE: EXPRESSWAY GUTTER (EG) -L- STA. 18+08.00 TO 18+75.00 LT.
NOTE: SHOULDER BERM GUTTER (SBG) -L- STA. 16+60.00 TO 17+02.03 RT.
AND -L- STA. 17+75.03 TO 18+50.00 RT.

UTILITY OWNERS
NANTHALA POWER & LIGHT
P.O. BOX 260
FRANKLIN, N.C.
28734
GTE TELEPHONE OPERATION
SOUTH AREA
201 WEST CENTRAL AVE.
MURPHY, N.C.
28906
ANDREW'S CABLE BOARD
131 WILSON ST.
ANDREWS, N.C.
28901

NOTE: DO NOT DISTURB DECK, WELL, SEPTIC TANK AND DRAIN LINE ON PARCEL 1

7/2/99
05-AUG-2008 09:17
g:\tip\project\ec-4\environmental\design\b3635-ec-s4.dgn
jennifer.parrish AT RENT242003



32 x 10 x 3
ID 4.2 CG

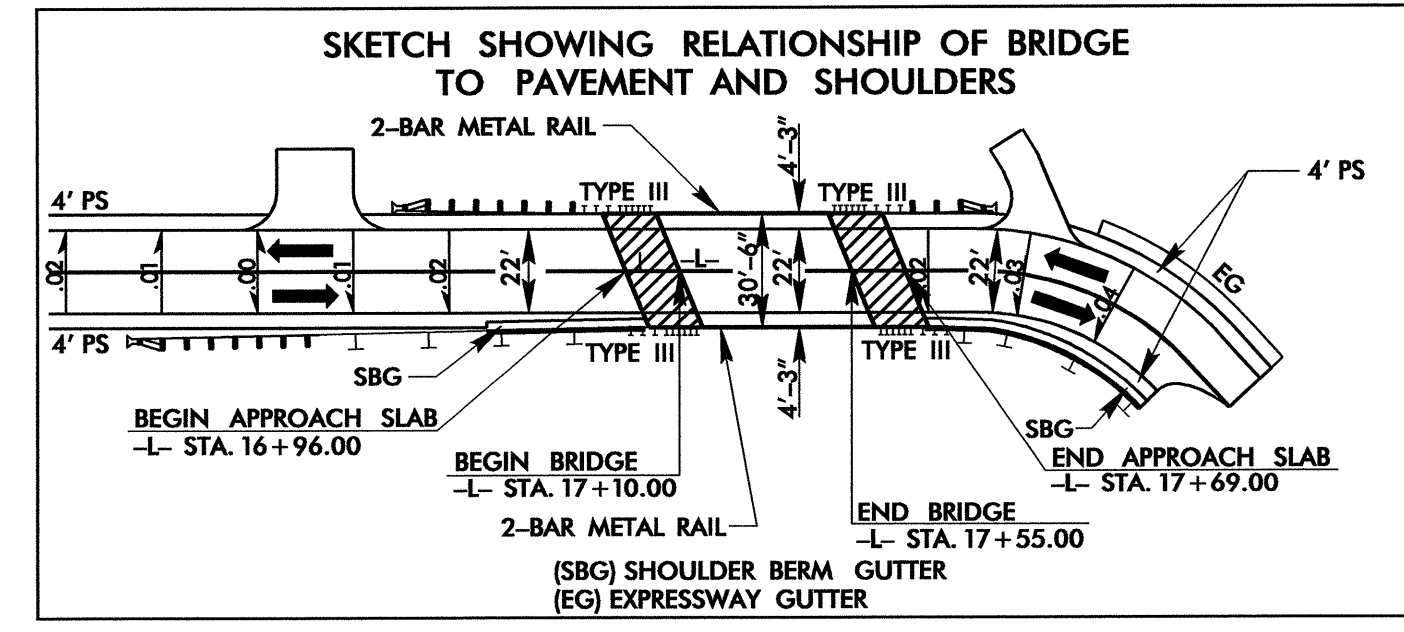
38 x 12 x 3
ID 4.1 CG

35 x 17 x 3
1.5 inch Skimmer
with 0.875 inch
Orifice Diameter
9 ft. weir
ID 4.3 CG

NOTE: DESIGN EXCEPTION REQUIRED FOR DESIGN SPEED, MINIMUM
HORIZONTAL CURVE RADIUS, SUPERELEVATION, AND
ASSOCIATED STOPPING SIGHT DISTANCE.

NOTE: SEE SHEET 5 FOR -L- PROFILE
SEE SHEETS TCP-? THRU TCP-? FOR DETOUR OPERATION
SEE SHEETS S-1 THRU S-? FOR STRUCTURE PLANS

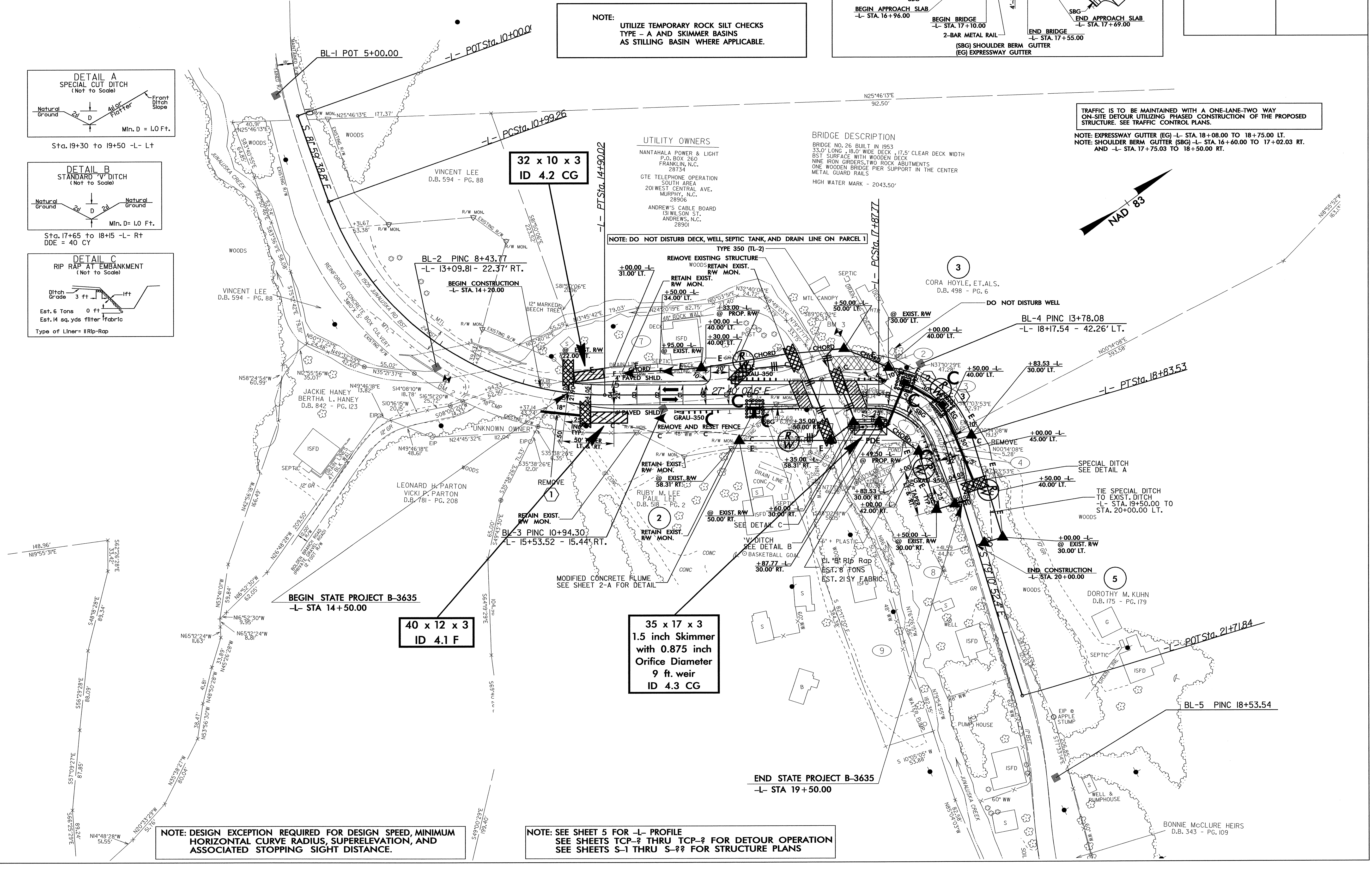
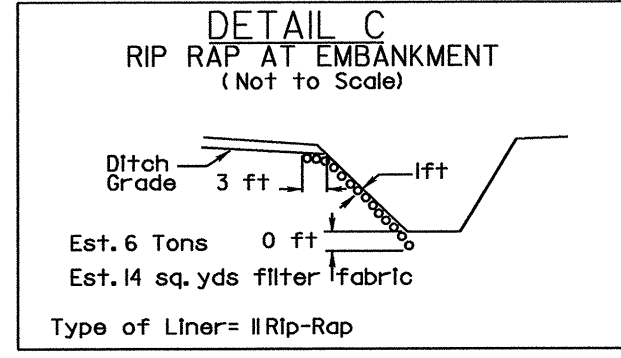
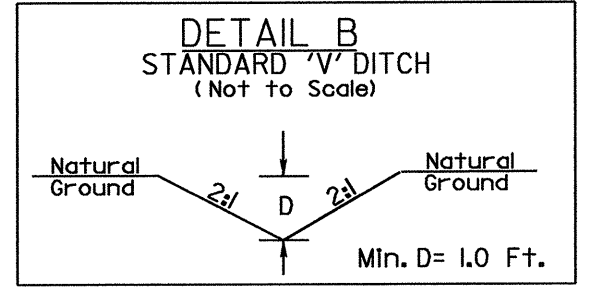
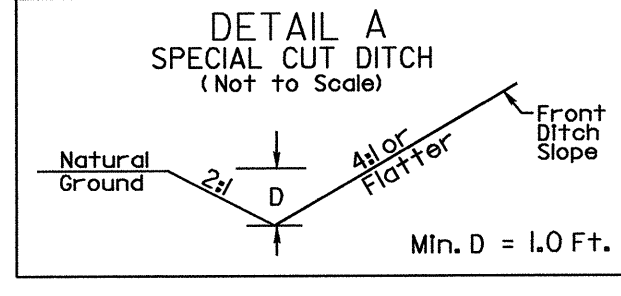
| | |
|-------------------------|---------------------|
| PROJECT REFERENCE NO. | SHEET NO. |
| B-3635 | EC-5/CONST.4 |
| RW SHEET NO. | |
| ROADWAY DESIGN ENGINEER | HYDRAULICS ENGINEER |



NOTE: UTILIZE TEMPORARY ROCK SILT CHECKS TYPE - A AND SKIMMER BASINS AS STILLING BASIN WHERE APPLICABLE.

TRAFFIC IS TO BE MAINTAINED WITH A ONE-LANE-TWO WAY ON-SITE DETOUR UTILIZING PHASED CONSTRUCTION OF THE PROPOSED STRUCTURE. SEE TRAFFIC CONTROL PLANS.

NOTE: EXPRESSWAY GUTTER (EG) -L- STA. 18+08.00 TO 18+75.00 LT.
NOTE: SHOULDER BERM GUTTER (SBG) -L- STA. 16+60.00 TO 17+02.03 RT. AND -L- STA. 17+75.03 TO 18+50.00 RT.



32 x 10 x 3
ID 4.2 CG

40 x 12 x 3
ID 4.1 F

35 x 17 x 3
1.5 inch Skimmer
with 0.875 inch
Orifice Diameter
9 ft. weir
ID 4.3 CG

NOTE: DESIGN EXCEPTION REQUIRED FOR DESIGN SPEED, MINIMUM HORIZONTAL CURVE RADIUS, SUPERELEVATION, AND ASSOCIATED STOPPING SIGHT DISTANCE.

NOTE: SEE SHEET 5 FOR -L- PROFILE
SEE SHEETS TCP-? THRU TCP-? FOR DETOUR OPERATION
SEE SHEETS S-1 THRU S-?? FOR STRUCTURE PLANS

05-AUG-2008 09:19
g:\projects\ec-5\environmental\design\b3635_ec.s4.dgn
jennifertanish AT RENN242003