

PLAN FOR PROPOSED TRAFFIC CONTROL, MARKING & DELINEATION NEW HANOVER COUNTY

ROADWAY STANDARD DRAWINGS

THE FOLLOWING ROADWAY STANDARDS AS APPEAR IN "ROADWAY STANDARD DRAWINGS"- PROJECT SERVICES UNIT-N.C. DEPARTMENT OF TRANSPORTATION-RALEIGH, N.C., DATED JULY 2006 ARE APPLICABLE TO THIS PROJECT AND BY REFERENCE HEREBY ARE CONSIDERED A PART OF THESE PLANS:

STD. NO.	TITLE
1101.02	TEMPORARY LANE CLOSURES
1101.03	TEMPORARY ROAD CLOSURES
1101.04	TEMPORARY SHOULDER CLOSURES
1101.11	TRAFFIC CONTROL DESIGN TABLES
1110.02	PORTABLE WORK ZONE SIGNS
1115.01	FLASHING ARROW PANELS
1130.01	DRUMS
1135.01	CONES
1145.01	BARRICADES
1150.01	FLAGGING DEVICES
1165.01	TRUCK MOUNTED IMPACT ATTENUATOR
1180.01	SKINNY DRUM

INDEX OF SHEETS

SHEET NO.	TITLE
TCP 2-1	LIST OF APPLICABLE ROADWAY STANDARD DRAWINGS, PHASING AND INDEX OF SHEETS
TCP 2-2	PROJECT NOTES
TCP 2-3	TYPICAL DRAWING FOR SIDEWALK CLOSURES
TCP 2-4	ADVANCED WORK ZONE WARNING SIGNS

PHASING

STEP 1: PERFORM ALL WORK ASSOCIATED WITH THE INSTALLATION OF THE PROPOSED SIGNALS AND TRAFFIC MANAGEMENT SYSTEM AS SHOWN IN THE CONTRACT, CONSTRUCTION PLANS AND/OR SPECIAL PROVISIONS IN ACCORDANCE WITH THE "NCDOT STANDARD SPECIFICATIONS FOR ROADS AND STRUCTURES - JULY 2006" AND USING THE FOLLOWING ROADWAY STANDARD DRAWINGS:

R.S.D. 1101.02,	SHEET 1 OF 9
R.S.D. 1101.02,	SHEET 2 OF 9
R.S.D. 1101.02,	SHEET 3 OF 9
R.S.D. 1101.02,	SHEET 4 OF 9
R.S.D. 1101.02,	SHEET 5 OF 9
R.S.D. 1101.02,	SHEET 6 OF 9
R.S.D. 1101.02,	SHEET 7 OF 9
R.S.D. 1101.03,	SHEET 8 OF 9
R.S.D. 1101.03,	SHEET 9 OF 9
R.S.D. 1101.04,	SHEET 1 OF 1

STEP 2: UPON COMPLETION OF THE PROJECT, REMOVE ALL TRAFFIC CONTROL DEVICES.

NOTE: INSTALL CHANGEABLE MESSAGE SIGNS IN ADVANCE OF THE WORK ZONE AS DIRECTED BY THE ENGINEER.

NOTE: REMOVE ALL TEMPORARY TRAFFIC CONTROL LANE CLOSURE DEVICES AND RETURN TRAFFIC TO ITS EXISTING TRAFFIC PATTERN AT THE END OF EACH WORK PERIOD.

NOTE: WHEN CONSTRUCTING/REMOVING SIGNAL POLE STRUCTURES OR FOOTINGS ADJACENT TO TRAFFIC OR SIDEWALKS, INSTALL 1" TEMPORARY A36 STEEL PLATES OR ORANGE TREE PROTECTION FENCING AS DIRECTED BY THE ENGINEER. THE CONTRACTOR MAY WORK EACH LOCATION INDEPENDENTLY OR CONCURRENTLY, UNLESS OTHERWISE DIRECTED BY THE ENGINEER. WORK IN A CONTINUOUS MANNER TO PERFORM THE WORK IN THE FOLLOWING SEQUENCE, IN STEPS 'A' THRU 'E'.

A: CLOSE THE APPROPRIATE TRAVEL LANE TO TRAFFIC USING ROADWAY STANDARD DRAWING NO. 1101.02 SHEETS 1, 2 & 3 OF 9.

OR

USING SHEET TCP 2-3 AS A GUIDE, AND AS DIRECTED BY THE ENGINEER CLOSE THE APPROPRIATE SIDEWALK UTILIZING TYPE III BARRICADES WITH SIGNS ATTACHED.

B: CONSTRUCT PROPOSED OR REMOVE EXISTING STRUCTURE AS SHOWN IN THE CABLE LAYOUT PLANS AND/OR SIGNAL PLANS. PROTECT MOTORISTS AND PEDESTRIANS FROM OPEN EXCAVATIONS OR OTHER HAZARDS POSED BY INCOMPLETE CONSTRUCTION WORK, BY ONE OR A COMBINATION OF THE FOLLOWING METHODS AS APPROVED BY THE ENGINEER:

- 1) COVER AREA WITH 1" TEMPORARY A36 STEEL PLATES
- 2) COMPLETELY SURROUND AREA WITH AN ORANGE TREE PROTECTION FENCE

C: OPEN TRAVEL LANE OR SIDEWALK TO EXISTING TRAFFIC PATTERN BY THE END OF EACH WORK PERIOD.

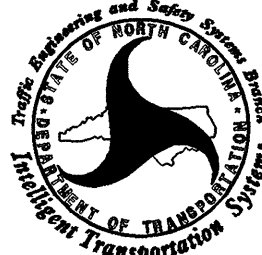

D: WHEN PROPERLY CURED, CLOSE THE APPROPRIATE TRAVEL LANE USING ROADWAY STANDARD DRAWING NO. 1101.02, SHEETS 1, 2 & 3 OF 9;

OR

USING SHEET TCP 2-3 AS A GUIDE, AND AS DIRECTED BY THE ENGINEER CLOSE THE APPROPRIATE SIDEWALK UTILIZING TYPE III BARRICADES WITH SIGNS ATTACHED;

BACKFILL & PAVE, IF REQUIRED, UP TO THE EDGE AND ELEVATION OF EXISTING PAVEMENT OR SIDEWALK (SEE CABLE LAYOUT PLANS AND/OR SIGNAL PLANS).

E: OPEN TRAVEL LANE OR SIDEWALK TO EXISTING TRAFFIC PATTERN BY THE END OF THE WORK PERIOD.

 Prepared for the Offices of: NORTH CAROLINA DEPARTMENT OF TRANSPORTATION	Wilmington Signal System Traffic Control Plans Phase 2 Division 03 New Hanover County Wilmington PLAN DATE: July 2008 REVIEWED BY: LM Moon PREPARED BY: JA Wiles REVIEWED BY: JT Brooks	SEAL  NORTH CAROLINA PROFESSIONAL ENGINEER SEAL 17586 J. TODD BROOKS
Scale NONE	REVISIONS INIT. DATE SIGNATURE DATE	SIGNATURE DATE <i>J. Todd Brooks</i>

CADD Filename: TCP1_tcp1title.dgn

GENERAL NOTES

PROJECT NOTES

CHANGES MAY BE REQUIRED WHEN PHYSICAL DIMENSIONS IN THE DETAIL DRAWINGS, STANDARD DETAILS AND ROADWAY DETAILS ARE NOT ATTAINABLE TO MEET FIELD CONDITIONS, OR RESULT IN DUPLICATE, OR UNDESIRED OVERLAPPING OF DEVICES. MODIFICATION MAY INCLUDE: MOVING, SUPPLEMENTING, COVERING OR REMOVAL OF DEVICES, AS DIRECTED BY THE ENGINEER.

THE FOLLOWING GENERAL NOTES APPLY AT ALL TIMES FOR THE DURATION OF THE CONSTRUCTION PROJECT, EXCEPT WHEN OTHERWISE NOTED IN THE PLANS, OR DIRECTED BY THE ENGINEER.

TIME RESTRICTIONS

A) DO NOT CLOSE OR NARROW TRAVEL LANES AS FOLLOWS:

ROAD NAME	DAY AND TIME RESTRICTIONS
ALL ROADS	MON. - FRI. 6:00 AM TO 7:00 PM

B) DO NOT CLOSE OR NARROW TRAVEL LANES DURING HOLIDAYS AND SPECIAL EVENTS AS FOLLOWS:

ROAD NAME
COLLEGE ROAD (US 117/NC 132)
MARKET STREET (US 17 BUSINESS)
THIRD STREET (US 17 BUSINESS)
WOOSTER STREET (US 76)
DAWSON STREET (US 76)
SOUTH SIXTEENTH STREET
NORTH SEVENTEENTH STREET
WRIGHTSVILLE AVE/WILSHIRE BOULEVARD
INDEPENDENCE BOULEVARD/COVIL AVENUE
SOUTH KERR AVENUE
NEW CENTRE DRIVE
NORTH TWENTY-THIRD STREET
RANDALL PARKWAY
OLEANDER DRIVE (US 76)

HOLIDAY

- FOR ANY UNEXPECTED OCCURRENCE THAT CREATES UNUSUALLY HIGH TRAFFIC VOLUMES, AS DIRECTED BY THE ENGINEER.
- FOR NEW YEAR'S, BETWEEN THE HOURS OF 4:00 P.M. DECEMBER 31ST TO 9:00 A.M. JANUARY 2ND. IF NEW YEAR'S DAY IS ON A FRIDAY, SATURDAY, SUNDAY, OR MONDAY THEN UNTIL 9:00 A.M. THE FOLLOWING TUESDAY.
- FOR EASTER, BETWEEN THE HOURS OF 4:00 P.M. THURSDAY AND 9:00 A.M. MONDAY.
- FOR MEMORIAL DAY, BETWEEN THE HOURS OF 4:00 P.M. FRIDAY TO 9:00 A.M. TUESDAY.
- FOR INDEPENDENCE DAY, BETWEEN THE HOURS OF 4:00 P.M. THE DAY BEFORE INDEPENDENCE DAY AND 9:00 A.M. THE DAY AFTER INDEPENDENCE DAY.

IF INDEPENDENCE DAY IS ON A FRIDAY, SATURDAY, SUNDAY OR MONDAY THEN BETWEEN THE HOURS OF 4:00 P.M. THE THURSDAY BEFORE INDEPENDENCE DAY AND 9:00 A.M. THE TUESDAY AFTER INDEPENDENCE DAY.

- FOR LABOR DAY, BETWEEN THE HOURS OF 4:00 P.M. FRIDAY AND 9:00 A.M. TUESDAY.
- FOR THANKSGIVING DAY, BETWEEN THE HOURS OF 4:00 P.M. TUESDAY TO 9:00 A.M. MONDAY.
- FOR CHRISTMAS, BETWEEN THE HOURS OF 4:00 P.M. THE FRIDAY BEFORE THE WEEK OF CHRISTMAS DAY AND 9:00 A.M. THE FOLLOWING TUESDAY AFTER THE WEEK OF CHRISTMAS.
- FOR ANY SPECIAL EVENT OCCURRING BETWEEN 3 HOURS BEFORE THE START AND 3 HOURS AFTER THE END OF THE SPECIAL EVENT, AS DIRECTED BY THE ENGINEER.

SPECIAL EVENTS

- FOR ANY UNEXPECTED OCCURRENCE THAT CREATES UNUSUALLY HIGH TRAFFIC VOLUMES, AS DIRECTED BY THE ENGINEER.
- FOR ANY SPECIAL EVENT OCCURRING BETWEEN 3 HOURS BEFORE THE START AND 3 HOURS AFTER THE END OF THE SPECIAL EVENT, AS DIRECTED BY THE ENGINEER.
- FOR THE WEEK OF THE ANNUAL NORTH CAROLINA AZALEA FESTIVAL IN APRIL, DO NOT PERFORM ANY WORK BETWEEN THE HOURS OF 6:00 AM THURSDAY THROUGH 6:00 AM AFTER THE FESTIVAL WITHOUT THE PRIOR APPROVAL OF THE ENGINEER AND THE CITY OF WILMINGTON TRAFFIC ENGINEER. CALL (910) 794-4650 OR VISIT THE FESTIVAL'S WEBSITE AT WWW.NCAZALEAFESTIVAL.ORG TO CONFIRM THE DATES OF THE FESTIVAL.
- FOR THE WEEKEND OF THE ANUAL WILMINGTON RIVERFEST IN OCTOBER, DO NOT PERFORM ANY WORK BETWEEN THE HOURS OF 6:00 AM FRIDAY THROUGH 6:00 AM MONDAY AFTER THE RIVERFEST EVENT WITHOUT THE PRIOR APPROVAL OF THE ENGINEER AND THE CITY OF WILMINGTON TRAFFIC ENGINEER. CALL (910) 452-6862 OR VISIT THE FESTIVAL'S WEBSITE AT WWW.WILMINGTONRIVERFEST.COM TO CONFIRM THE DATES OF THE FESTIVAL.

C) DO NOT CLOSE OR NARROW TRAVEL LANES OR CLOSE SIDEWALKS OR PEDESTRIAN CROSSINGS WITHIN 1/2 MILE OF A SCHOOL DURING ARRIVAL AND DISMISSAL HOURS ON A SCHOOL DAY. COORDINATE WITH THE AFFECTED SCHOOL CONCERNING OPERATIONAL HOURS AND SCHOOL DAYS. AS A MINIMUM, DO NOT CLOSE OR NARROW A LANE OR CLOSE A SIDEWALK OR PEDESTRIAN CROSSING DURING HOURS POSTED ON SCHOOL SPEED ZONE SIGNS (WHEN PRESENT).

D) WHEN STOPPING TRAFFIC FOR THE DURATIONS AND OPERATIONS LISTED BELOW, DO NOT STOP TRAFFIC AS FOLLOWS:

ROAD NAME	DAY AND TIME RESTRICTIONS	DURATION AND OPERATION
ALL ROADS	MON. - SUN. 6:00 AM TO 12:00 MID.	20 MINUTES INSTALLING CABLE ACROSS ROAD (USING RSD. 1101.03, SHEETS 8 & 9 of 9)

E) WHEN CHANGING OUT CONTROLLER CABINETS, USE A POLICE OFFICER(S) TO DIRECT TRAFFIC THROUGH THE INTERSECTION WHILE TRAFFIC SIGNAL IS NOT IN OPERATION. DO NOT TAKE TRAFFIC SIGNAL OUT OF OPERATION FOR MORE THAN 3 HOURS AT A GIVEN INTERSECTION. DO NOT TAKE ANY TRAFFIC SIGNAL OUT OF OPERATION TO PERFORM CONTROLLER CABINET CHANGEOUT BETWEEN THE HOURS OF 4:00 PM AND 9:00 AM THE FOLLOWING MORNING.

F) CONSTRUCT NEW CONDUIT ENTRANCES INTO EXISTING CONTROLLER CABINET FOUNDATIONS WHILE MAINTAINING THE OPERATIONS OF THE EXISTING TRAFFIC SIGNAL WHEREVER POSSIBLE. WHEN A TRAFFIC SIGNAL MUST BE TAKEN OUT OF OPERATION TO CONSTRUCT A CONDUIT ENTRANCE INTO AN EXISTING CONTROLLER CABINET FOUNDATION AND SUBJECT TO THE ENGINEER'S APPROVAL, USE A POLICE OFFICER(S) TO DIRECT TRAFFIC THROUGH THE INTERSECTION WHILE THE TRAFFIC SIGNAL IS NOT IN OPERATION. DO NOT TAKE A TRAFFIC SIGNAL OUT OF OPERATION WITHOUT THE PRIOR APPROVAL OF THE ENGINEER AND DO NOT TAKE THE TRAFFIC SIGNAL OUT OF OPERATION FOR MORE THAN ONE HOUR AT A GIVEN INTERSECTION. DO NOT TAKE ANY TRAFFIC SIGNAL OUT OF OPERATION TO PERFORM CONTROLLER CABINET CHANGEOUT BETWEEN THE HOURS OF 4:00 PM AND 9:00 AM THE FOLLOWING MORNING.

LANE AND SHOULDER CLOSURE REQUIREMENTS

G) ON STREETS WHERE POSTED SPEED LIMIT IS 40 MPH OR LESS AND WORK IS ON THE SHOULDER, CLOSE THE SHOULDER USING RSD 1104.04 OR USE A SHOULDER CLOSURE WITH MINOR ENCRoACHMENT INTO THE ADJACENT TRAFFIC LANE AS SHOWN IN M.U.T.C.D. FIGURE 6H-6, "SHOULDER WORK WITH MINOR ENCRoACHMENT (TA-6)." WHEN USING TA-6, COMPLY WITH THE APPLICATION NOTES ON MUTCD PAGE 6H-16, AND MAINTAIN A MINIMUM OF 10-FT TRAVEL LANE. CLOSE AFFECTED SIDEWALKS AND PEDESTRIAN PATHS. WHERE A 10FT. OR GREATER TRAVEL LANE CANNOT BE MAINTAINED OR AS DIRECTED BY THE ENGINEER, CLOSE THE ADJACENT TRAFFIC LANE USING RSD 1101.02, SHEETS 1 THRU 4 OF 9.

H) REMOVE LANE CLOSURE DEVICES FROM THE LANE WHEN WORK IS NOT BEING PERFORMED BEHIND THE LANE CLOSURE OR WHEN A LANE CLOSURE IS NO LONGER NEEDED, OR AS DIRECTED BY THE ENGINEER.

I) WHEN PERSONNEL AND/OR EQUIPMENT ARE WORKING GREATER THAN 5 FT BUT LESS THAN 15 FT FROM AN OPEN TRAVEL LANE ON A ROADWAY WITH A POSTED SPEED LIMIT OF 45 MPH OR GREATER, CLOSE THE ADJACENT SHOULDER USING ROADWAY STANDARD DRAWING NO. 1101.04 UNLESS THE WORK AREA IS PROTECTED BY BARRIER OR GUARDRAIL OR A LANE CLOSURE IS INSTALLED.

J) WHEN PERSONNEL AND/OR EQUIPMENT ARE WORKING WITHIN 5 FT OF AN OPEN TRAVEL LANE ON A ROADWAY WITH A POSTED SPEED LIMIT OF 45 MPH OR GREATER, CLOSE THE NEAREST OPEN TRAVEL LANE USING ROADWAY STANDARD DRAWING NO. 1101.02 UNLESS THE WORK AREA IS PROTECTED BY BARRIER OR GUARDRAIL.

K) WHEN PERSONNEL AND/OR EQUIPMENT ARE WORKING WITHIN A LANE OF TRAVEL OF AN UNDIVIDED OR DIVIDED FACILITY, CLOSE THE LANE ACCORDING TO THE ROADWAY STANDARD DRAWINGS OR AS DIRECTED BY THE ENGINEER. CONDUCT THE WORK SO THAT ALL PERSONNEL AND/OR EQUIPMENT REMAIN WITHIN THE CLOSED TRAVEL LANE.

L) DO NOT INSTALL MORE THAN ONE LANE CLOSURE IN ANY ONE DIRECTION ON ANY ROADWAY.

SIGNING

M) INSTALL ADVANCE WORK ZONE WARNING SIGNS WHEN WORK IS WITHIN 40 FT FROM THE EDGE OF TRAVEL LANE. INSTALL SIGNS IMMEDIATELY PRIOR TO THE BEGINNING OF CONSTRUCTION AND REMOVE OR COVER SIGNS UPON COMPLETION AND DURING INACTIVE PERIODS.

N) ENSURE ALL NECESSARY SIGNING IS IN PLACE PRIOR TO ALTERING ANY TRAFFIC PATTERN.

O) THE WORD "SIGNAL" OR "UTILITY" MAY BE USED IN LIEU OF "ROAD" ON W20-1 (ROAD WORK AHEAD) SIGNS G20-2a (END ROAD WORK) SIGNS. HOWEVER, DO NOT INTERMIX SIGNS.

TRAFFIC CONTROL DEVICES

P) SPACE CHANNELIZING DEVICES IN WORK AREAS NO GREATER THAN TWICE THE POSTED SPEED LIMIT (MPH), EXCEPT 10 FT ON-CENTER IN RADII AND 3 FT OFF THE EDGE OF AN OPEN TRAVELWAY, WHEN LANE CLOSURES ARE NOT IN EFFECT. WHEN SKINNY DRUMS ARE ALLOWED, REFER TO SECTION 1180 OF STANDARD SPECIFICATIONS FOR ROADS AND STRUCTURES OR AS SHOWN IN THE PLANS.

Q) PLACE ADDITIONAL SETS OF THREE CHANNELIZING DEVICES PERPENDICULAR TO THE EDGE OF TRAVELWAY ON 500 FT CENTERS WHEN UNOPENED LANES ARE CLOSED TO TRAFFIC.

PEDESTRIANS

R) MAINTAIN REASONABLE AND SAFE PEDESTRIAN ACCESS TO ALL BUSINESSES, SCHOOLS AND DWELLINGS IN AREAS AFFECTED BY CONSTRUCTION AT ALL TIMES.

S) WHEN CONSTRUCTION ACTIVITIES WILL BLOCK PEDESTRIAN ACCESS TO PEDESTRIAN SIGNAL PUSHBUTTONS, NOTIFY THE ENGINEER AT LEAST 24 HOURS IN ADVANCE OF SUCH WORK TO HAVE THE TRAFFIC SIGNAL PLACE ON PEDESTRIAN RECALL.

T) REFER TO MUTCD SECTION 6D.01, "PEDESTRIAN CONSIDERATIONS" AND SECTION 6D.02, "ACCESSIBILITY CONSIDERATIONS" FOR ADDITIONAL REQUIREMENTS AND CONSIDERATIONS FOR MAINTAINING PEDESTRIAN TRAFFIC THROUGH WORK AREA.




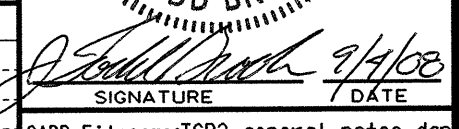
MISCELLANEOUS

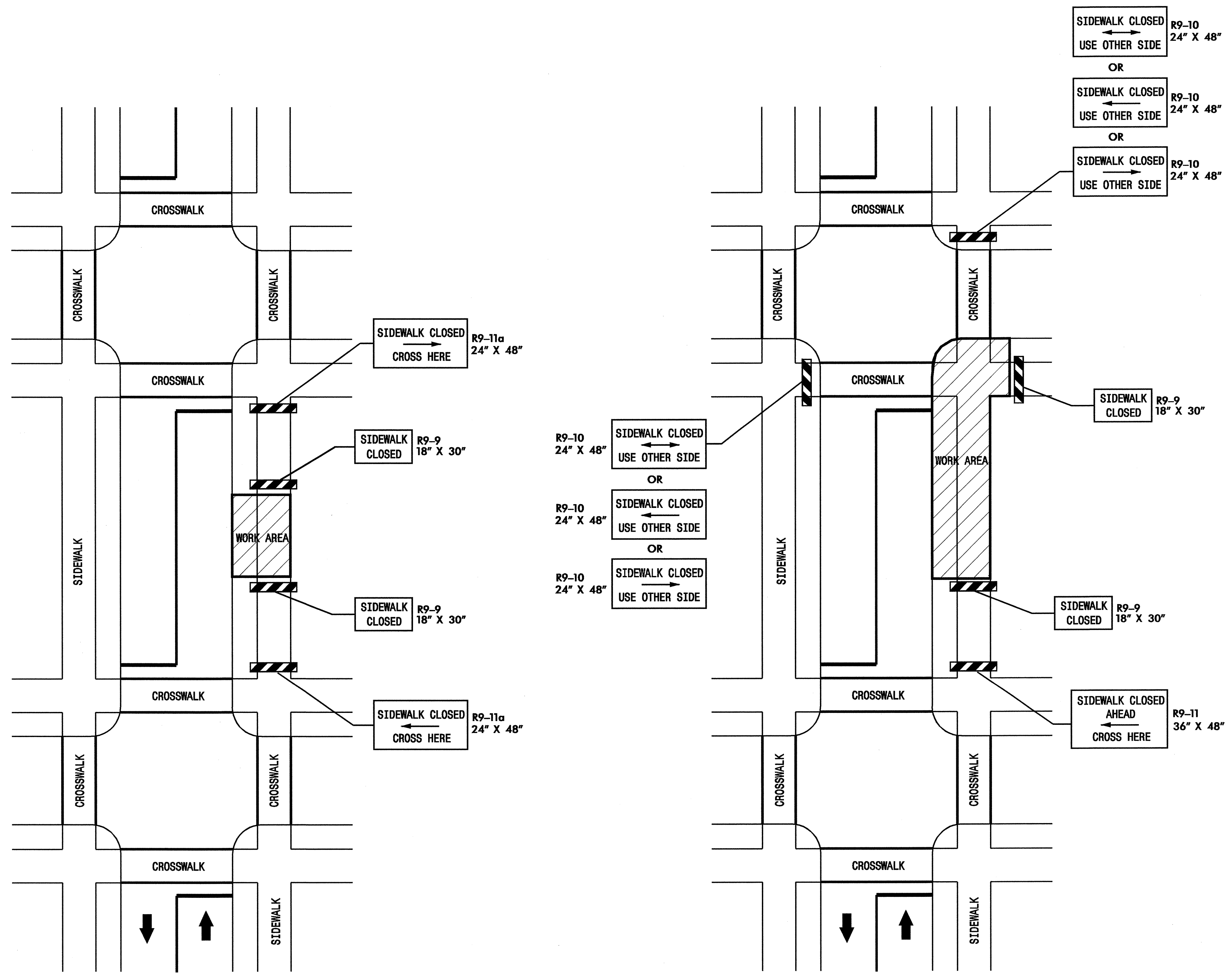
U) POLICE MAY BE USED TO MAINTAIN TRAFFIC THROUGH THE WORK AREA AND/OR INTERSECTIONS, AS DIRECTED AND APPROVED IN ADVANCE BY THE ENGINEER, AND SUBJECT TO THE AFOREMENTIONED TIME RESTRICTIONS.

04-SEP-2008 08:53:04 \\egcurr\z200317.01 - W:\imington_Sig_Sys\SpecDetail\Phase 2\TCP2_general_notes.dgn

PBS 1616 EAST WILLBROOK ROAD, SUITE 310
RALEIGH, NORTH CAROLINA 27609
(919) 876-8888

CITY OF WILMINGTON
NORTH CAROLINA
305 Chestnut Street
4th Floor, Tower
Wilmington, NC 28402

Prepared for the Offices of:				SEAL	
		Wilmington Signal System Traffic Control Plans Phase 2			
Division 03		New Hanover County		Wilmington	
PLAN DATE: August 2008		REVIEWED BY: LM Moon			
PREPARED BY: JA Wiles		REVIEWED BY: JT Brooks			
REVISIONS		INIT.		DATE	
Scale					
NONE					
				DATE	



TYPICAL DRAWING FOR
SIDEWALK CLOSURES

LEGEND

- TYPE III BARRICADE

23-JUL-2008 11:21
 G:\TECH\CURT\280337.01 - Wilmington Sig Sys\SpecDetail\Phase 2\TCP3_sidewalk_closure.dgn
 18566

PBSJ
 1616 EAST MILLBROOK ROAD, SUITE 310
 RALEIGH, NORTH CAROLINA 27609
 (919) 876-6888

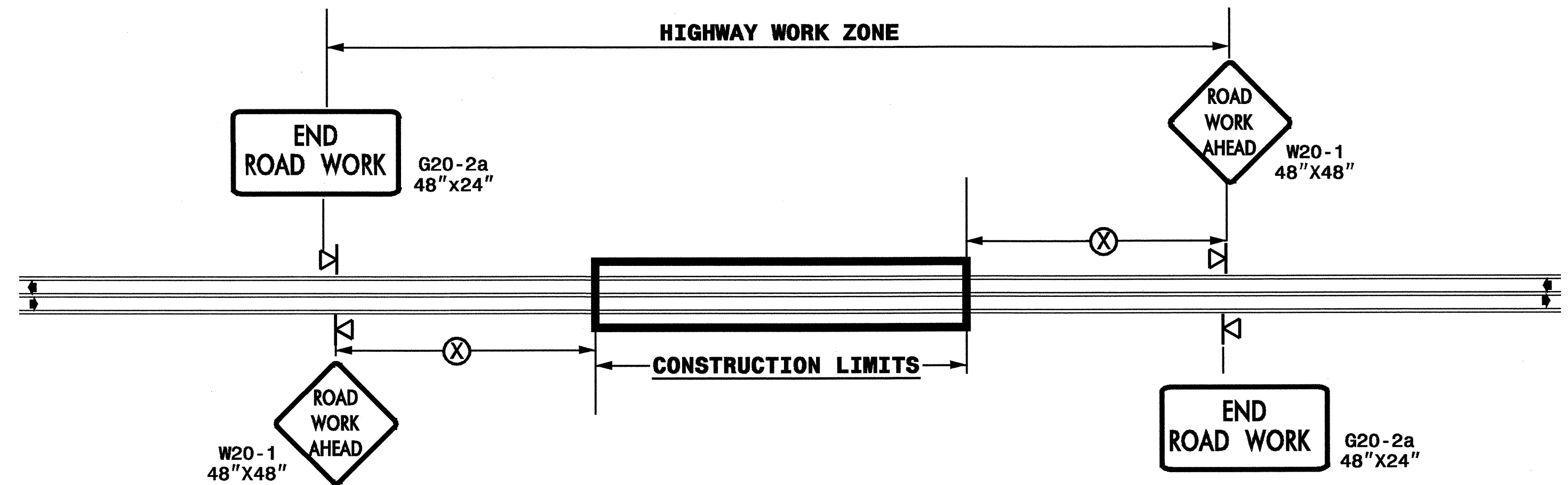
CITY OF WILMINGTON
 NORTH CAROLINA
 305 Chestnut Street
 4th Floor, Tower
 Wilmington, NC 28402

Prepared for the Offices of: 750 Greenfield Parkway, Garner, NC 27529	Wilmington Signal System Traffic Control Plans Phase 2		SEAL J. TODD BROOKS ENGINEER
	Division 03 New Hanover County Wilmington		
PLAN DATE: July 2008	REVIEWED BY: LM Moon	PREPARED BY: JA Wiles REVIEWED BY: JT Brooks	
NOT TO SCALE	REVISIONS	INIT.	DATE
		SIGNATURE DATE	

CADD Filename: TCP3_sidewalk_closure.dgn

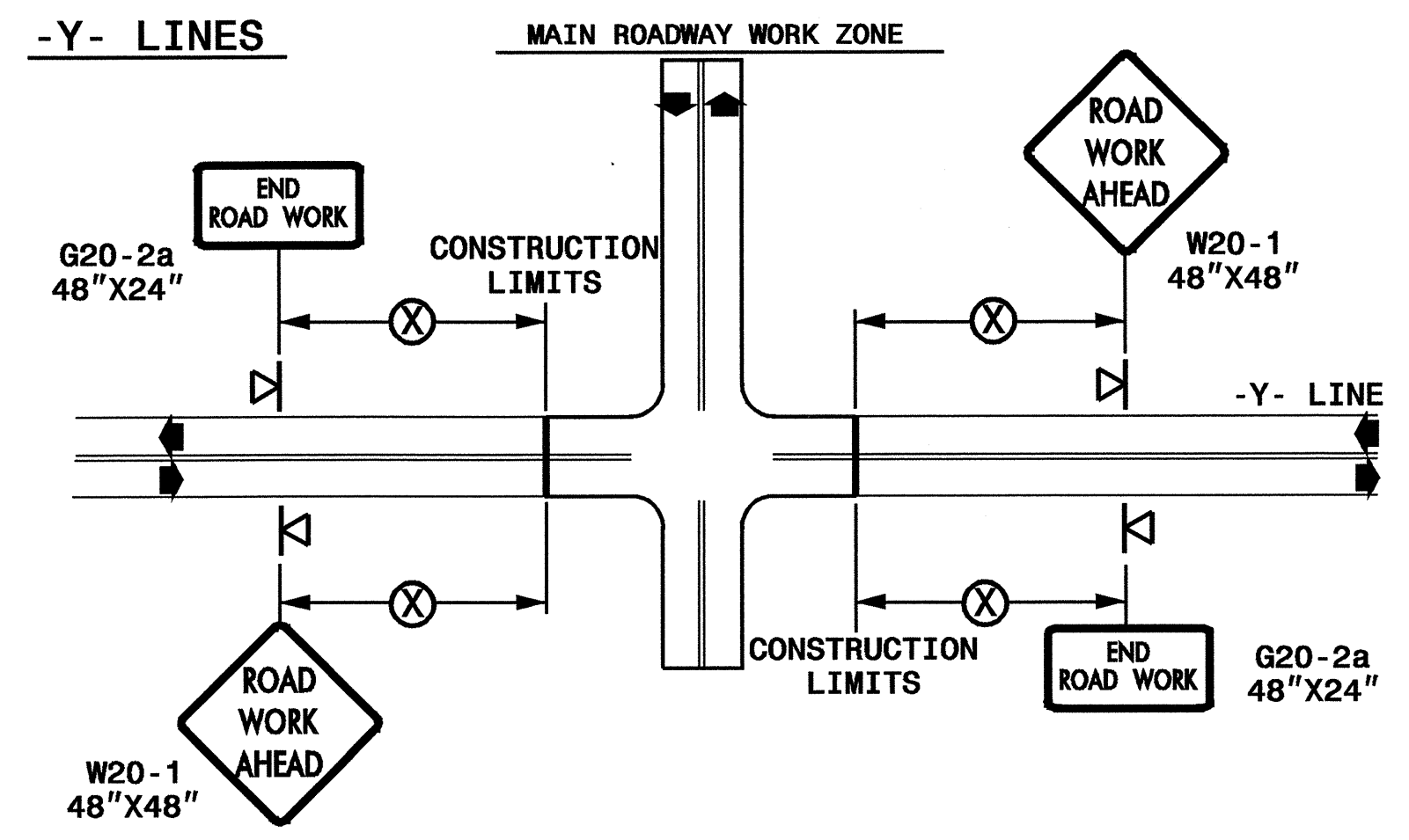
DETAIL DRAWING FOR WORK ZONE WARNING SIGNS

TWO-WAY UNDIVIDED ** (L-LINES)



POSTED SPEED LIMIT (M.P.H.)	RECOMMENDED MINIMUM SIGN SPACING
≤ 50	500'
≥ 55	1000'

ROADWAYS INTERSECTING ALONG 2 WAY UNDIVIDED WORK ZONE (Y-LINES)



GENERAL NOTES

- USE FLUORESCENT ORANGE SHEETING (TYPE VII OR HIGHER) ON ALL ADVANCED WORK ZONE SIGNS.
- DO NOT INSTALL ADVANCE WARNING SIGNS MORE THAN 3 DAYS PRIOR TO BEGINNING OF WORK.
- SIGNS SHOWN ARE REQUIRED FOR WORK ZONES THAT WILL REMAIN IN EFFECT OVERNIGHT. FOR SHORT-TERM DAILY MAINTENANCE TYPE OPERATIONS, THIS SIGNING APPLICATION IS OPTIONAL; MAY USE ONLY APPLICABLE ROADWAY STANDARD DRAWINGS INSTEAD. HOWEVER, IF THIS SIGNING APPLICATION IS USED, SIGNS MAY BE PORTABLE MOUNTED.
- ALL SIGN SPACING DIMENSIONS ARE APPROXIMATE, FIELD ADJUST AS NECESSARY OR AS DIRECTED.
- ERECT SIGNS PER ROADWAY STANDARD DRAWING 1110.02.
- ** TWO-WAY UNDIVIDED ADVANCE WARNING SIGN CONFIGURATION SHALL BE USED ON URBAN MULTI-LANE FACILITIES. FOR MULTILANES, UNDIVIDED ROADWAY, PLACE SIGNS ONLY ON RIGHT SIDE OF ROAD AS SHOWN. FOR MEDIAN-DIVIDED, MULTILANE ROADWAY, PLACE SIGNS ON BOTH LEFT (MEDIAN) AND RIGHT SIDES OF THE ROADWAY UNLESS DETERMINED OTHERWISE BY THE ENGINEER.

LEGEND

◀ PORTABLE SIGN

➡ DIRECTION OF TRAFFIC FLOW

23-JUL-2008 11:21 G:\EG-CURR\280337-01 - Wilmington 51g Sys\Spec\Detail\Phase 2\CP4_5_work zone signs.dgn 18566

PBSJ 1616 EAST WILLBROOK ROAD, SUITE 310
RALEIGH, NORTH CAROLINA 27609
(919) 876-6888

CITY OF WILMINGTON
305 Chestnut Street
4th Floor, Tower
Wilmington, NC 28402

	Wilmington Signal System Traffic Control Plans Phase 2		SEAL NORTH CAROLINA PROFESSIONAL ENGINEER 17586 TODD BROOKS
	Division 03 New Hanover County Wilmington		PREPARED BY: JA Wiles REVIEWED BY: DL Jones LW Woon
NOT TO SCALE	REVISIONS	INIT. DATE	SIGNATURE DATE

CADD Filename: TCP4_5_work zone signs.dgn