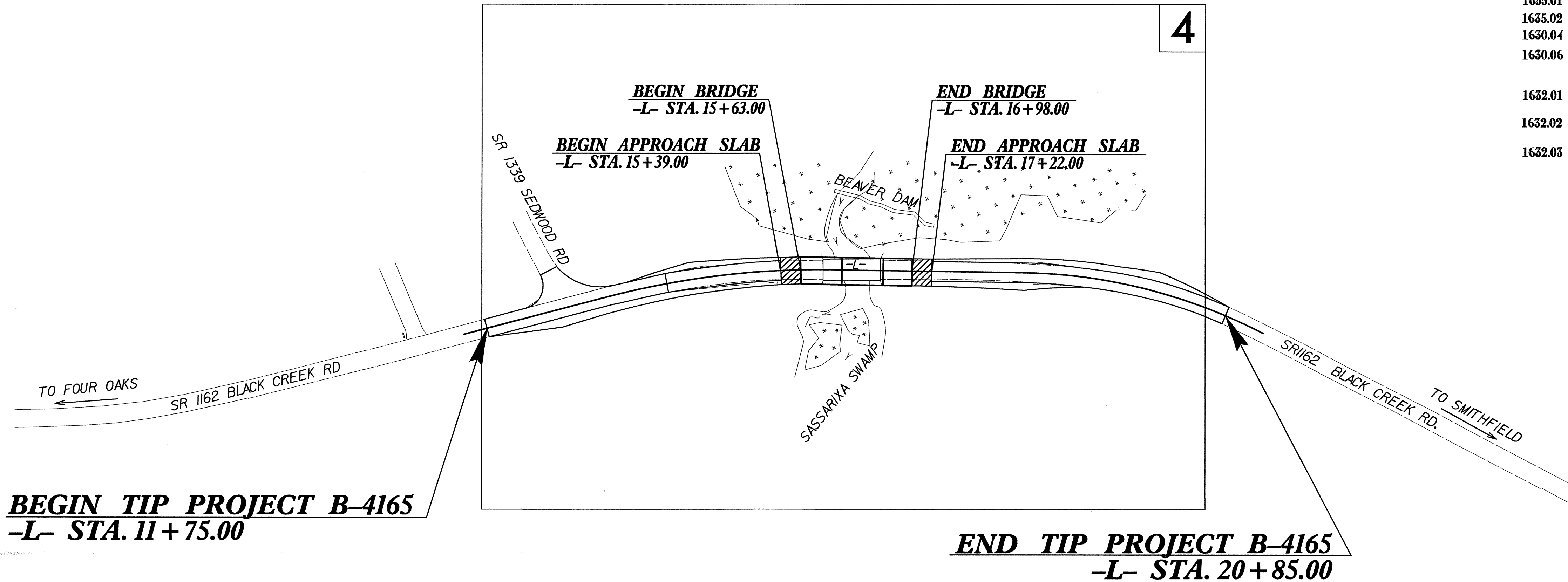


**TIP PROJECT: B-4165**

STATE OF NORTH CAROLINA  
 DIVISION OF HIGHWAYS  
 PLAN FOR PROPOSED  
 HIGHWAY EROSION CONTROL  
**JOHNSTON COUNTY**

**LOCATION: BRIDGE NO. 89 ON SR 1162 (BLACK CREEK RD)  
 OVER SASSARIXA SWAMP**

**TYPE OF WORK: GRADING, DRAINAGE, PAVING AND STRUCTURE**



STATE	STATE PROJECT REFERENCE NO.	SHEET NO.	TOTAL SHEETS
N.C.	B-4165	EC-1	
STATE PROJ. NO.	F.A. PROJ. NO.	DESCRIPTION	

**EROSION AND SEDIMENT CONTROL MEASURES**

Std. #	Description	Symbol
1630.03	Temporary Silt Ditch	TD
1630.05	Temporary Diversion	TD
1605.01	Temporary Silt Fence	III III III
1606.01	Special Sediment Control Fence	III III III
1622.01	Temporary Berms and Slope Drains	—▲—▲—▲—▲—
1630.01	Riser Basin	⊙
	Silt Basin Type B	▨
1633.01	Temporary Rock Silt Check Type-A	▩
	Temporary Rock Silt Check Type-B	▶
	Wattle	⤵
1634.01	Temporary Rock Sediment Dam Type-A	▩
1634.02	Temporary Rock Sediment Dam Type-B	▩
1635.01	Rock Pipe Inlet Sediment Trap Type-A	⊙
1635.02	Rock Pipe Inlet Sediment Trap Type-B	⊙
1630.04	Stilling Basin	▭
1630.06	Special Stilling Basin	▭
	Rock Inlet Sediment Trap:	
	Type A	A
1632.01	Type B	B
1632.02	Type C	C
1632.03	Type C	C
	Skimmer Basin	▭
	Tiered Skimmer Basin	▭
	Infiltration Basin	▭

**THIS PROJECT CONTAINS  
 EROSION CONTROL PLANS  
 FOR CLEARING AND  
 GRUBBING PHASE OF  
 CONSTRUCTION.**

**THIS PROJECT HAS  
 BEEN DESIGNED TO  
 SENSITIVE WATERSHED  
 STANDARDS.**

**ENVIRONMENTALLY  
 SENSITIVE AREA(S) EXIST  
 ON THIS PROJECT**  
 Refer To E. C. Special Provisions  
 for Special Considerations.

**GRAPHIC SCALE**

0

PLANS

0

PROFILE (HORIZONTAL)

0

PROFILE (VERTICAL)

ROADSIDE ENVIRONMENTAL UNIT  
 DIVISION OF HIGHWAYS  
 STATE OF NORTH CAROLINA

Prepared In the Office of:  
**ROADSIDE ENVIRONMENTAL UNIT**  
 1 South Wilmington St.  
 Raleigh, NC 27611  
**2006 STANDARD SPECIFICATIONS**

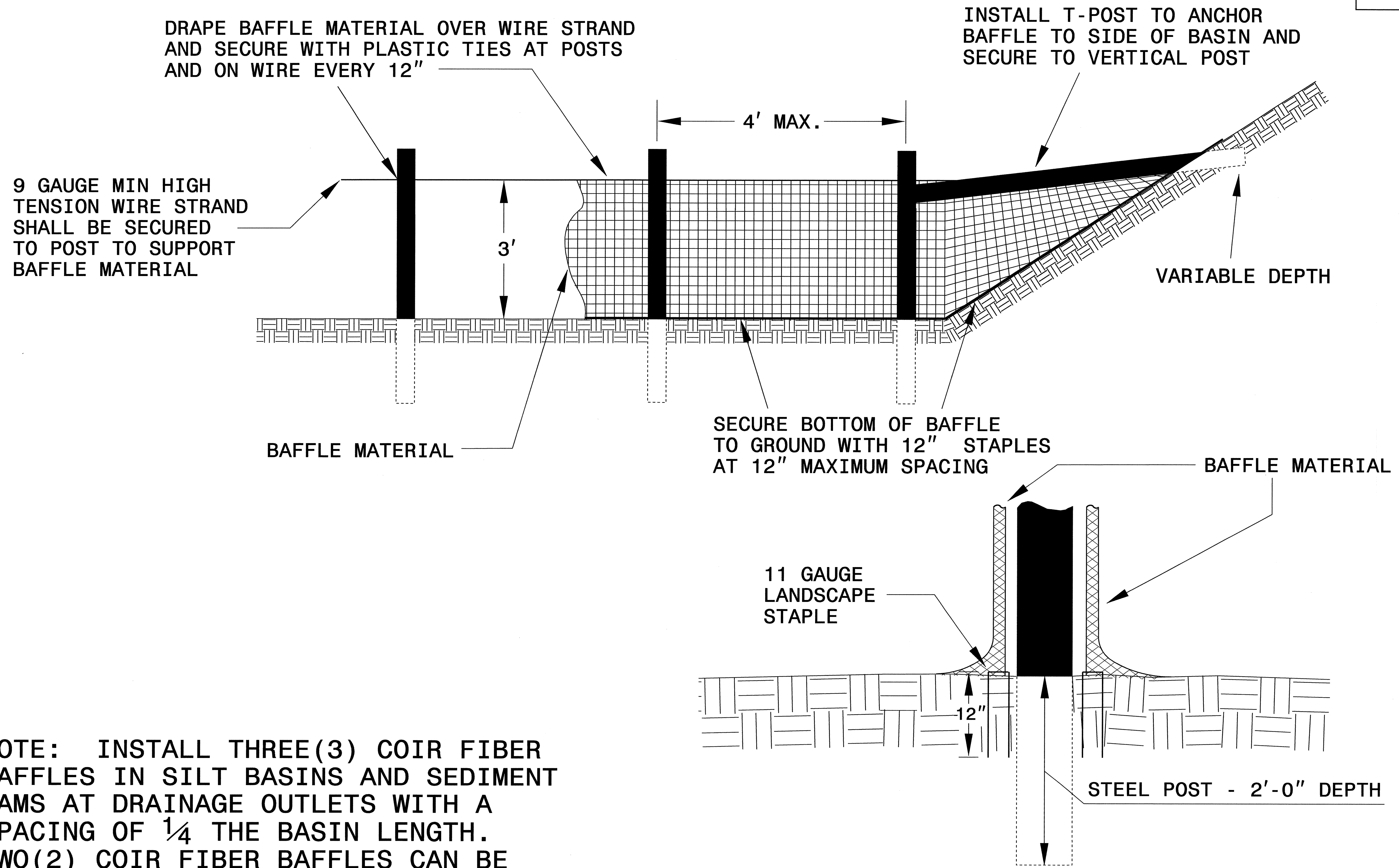
Roadway Standard Drawings

The following roadway english standards as appear in "Roadway Standard Drawings"- Roadway Design Unit - N. C. Department of Transportation - Raleigh, N. C., dated July 18, 2006 and the latest revision thereto are applicable to this project and by reference hereby are considered a part of these plans.

1605.01 Temporary Silt Fence	1630.06 Special Stilling Basin
1606.01 Special Sediment Control Fence	1632.03 Rock Inlet Sediment Trap Type C
1607.01 Gravel Construction Entrance	1633.01 Temporary Rock Silt Check Type A
1622.01 Temporary Berms and Slope Drains	1634.02 Temporary Rock Sediment Dam Type B
1630.05 Temporary Diversion	

PROJECT REFERENCE NO. B-4165	SHEET NO. EC-2
RW SHEET NO.	
ROADWAY DESIGN ENGINEER	HYDRAULICS ENGINEER

# COIR FIBER BAFFLE DETAIL



NOTE: INSTALL THREE (3) COIR FIBER BAFFLES IN SILT BASINS AND SEDIMENT DAMS AT DRAINAGE OUTLETS WITH A SPACING OF  $\frac{1}{4}$  THE BASIN LENGTH. TWO (2) COIR FIBER BAFFLES CAN BE INSTALLED IN SILT BASINS AND DAMS LESS THAN 20 FT. IN LENGTH WITH A SPACING OF  $\frac{1}{3}$  THE BASIN LENGTH.

BAFFLE MATERIAL SHALL BE SECURED TO THE BOTTOM AND SIDES OF BASIN USING 12" LANDSCAPE STAPLES



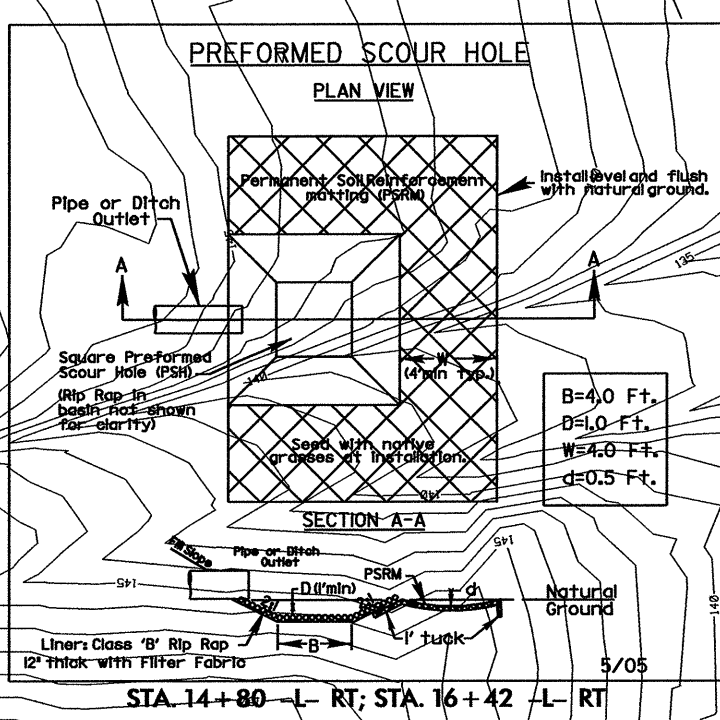
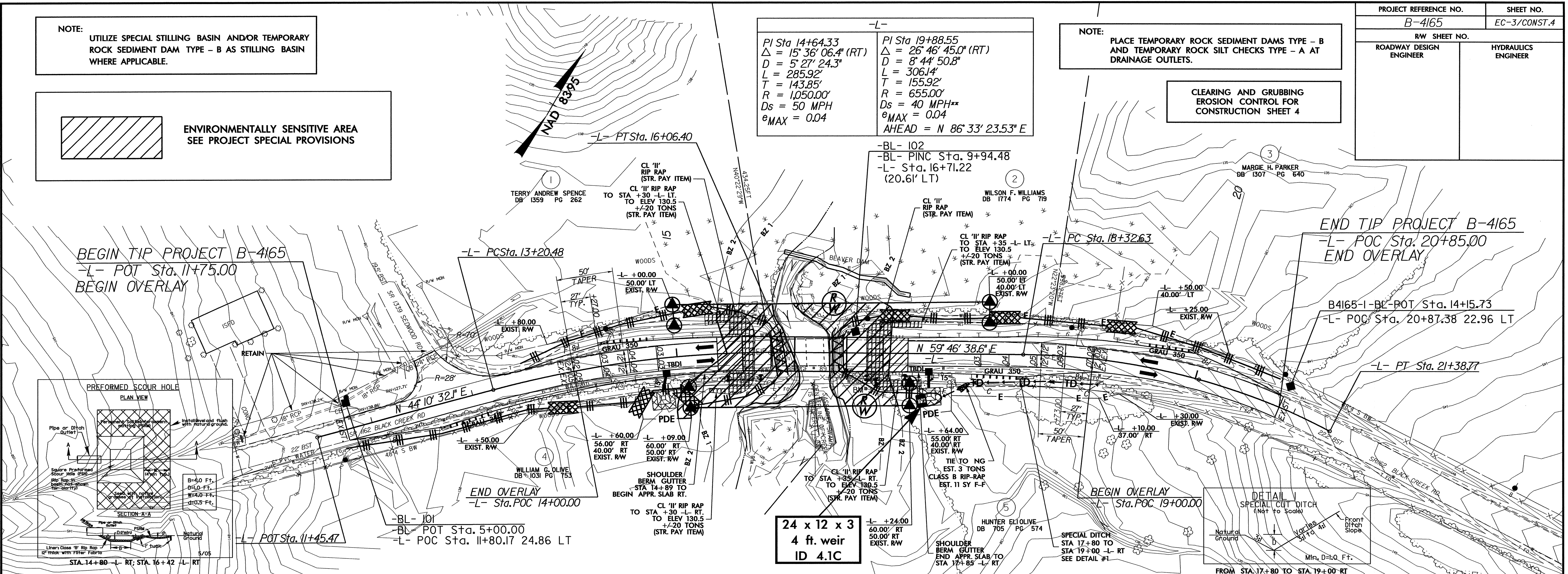
NOTE:  
UTILIZE SPECIAL STILLING BASIN AND/OR TEMPORARY ROCK SEDIMENT DAM TYPE - B AS STILLING BASIN WHERE APPLICABLE.

 ENVIRONMENTALLY SENSITIVE AREA  
SEE PROJECT SPECIAL PROVISIONS

NOTE:  
PLACE TEMPORARY ROCK SEDIMENT DAMS TYPE - B AND TEMPORARY ROCK SILT CHECKS TYPE - A AT DRAINAGE OUTLETS.

CLEARING AND GRUBBING  
EROSION CONTROL FOR  
CONSTRUCTION SHEET 4

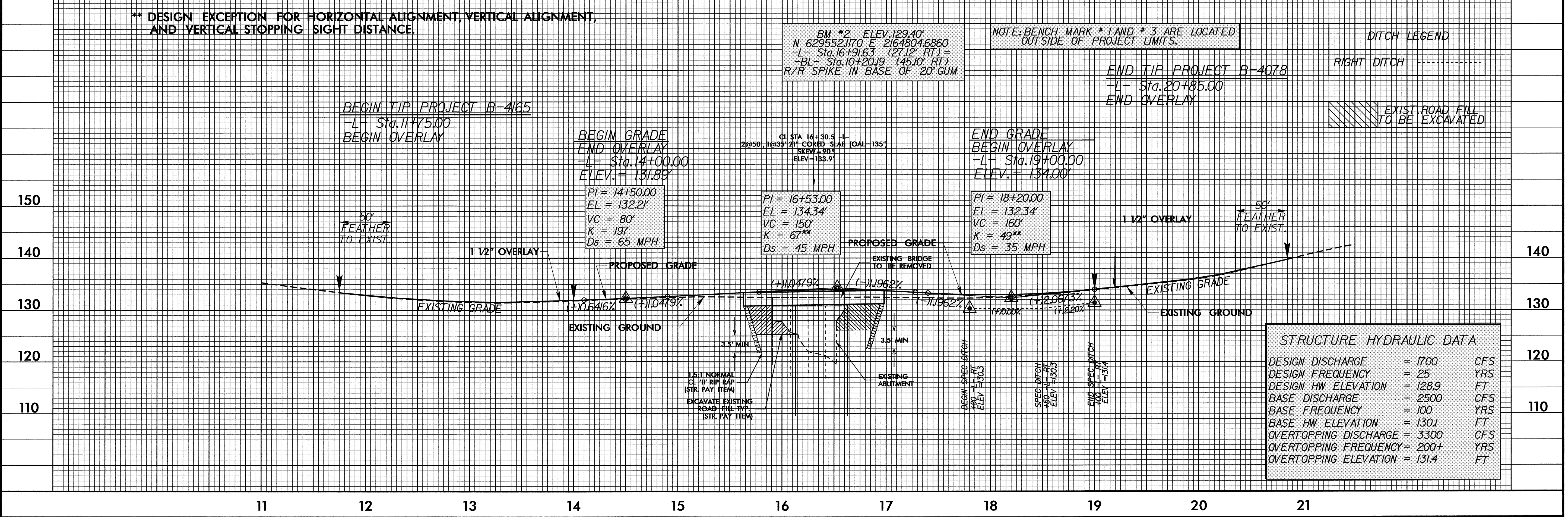
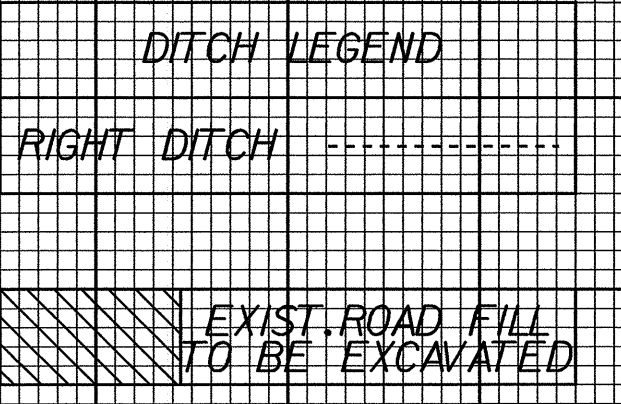
<p>PI Sta 14+64.33  <math>\Delta = 15' 36" 06.4" (RT)</math>  <math>D = 5' 27" 24.3"</math>  <math>L = 285.92'</math>  <math>T = 143.85'</math>  <math>R = 1,050.00'</math>  <math>Ds = 50 \text{ MPH}</math>  <math>e_{MAX} = 0.04</math></p>	<p>PI Sta 19+88.55  <math>\Delta = 26' 46" 45.0" (RT)</math>  <math>D = 8' 44" 50.8"</math>  <math>L = 306.14'</math>  <math>T = 155.92'</math>  <math>R = 655.00'</math>  <math>Ds = 40 \text{ MPH}^{**}</math>  <math>e_{MAX} = 0.04</math>  <math>AHEAD = N 86' 33' 23.53" E</math></p>
--	--



\*\* DESIGN EXCEPTION FOR HORIZONTAL ALIGNMENT, VERTICAL ALIGNMENT, AND VERTICAL STOPPING SIGHT DISTANCE.

BM \*2 ELEV. 129.40'  
 N 629552.170 E 2164804.6860  
 -L- Sta. 16+91.63 (27.12' RT) =  
 -BL- Sta. 10+20.19 (45.10' RT)  
 R/R SPIKE IN BASE OF 20' GUM

NOTE: BENCH MARK \*1 AND \*3 ARE LOCATED OUTSIDE OF PROJECT LIMITS.





PROJECT REFERENCE NO.	SHEET NO.
B-4165	EC-4/CONST.4
RW SHEET NO.	
ROADWAY DESIGN ENGINEER	HYDRAULICS ENGINEER

NOTE:  
UTILIZE SPECIAL STILLING BASIN AND/OR TEMPORARY ROCK SEDIMENT DAM TYPE - B AS STILLING BASIN WHERE APPLICABLE.

-L- PI Sta 14+64.33 $\Delta = 15' 36" 06.4" (RT)$ $D = 5' 27" 24.3"$ $L = 285.92'$ $T = 143.85'$ $R = 1,050.00'$ $Ds = 50 MPH$ $e_{MAX} = 0.04$	-L- PI Sta 19+88.55 $\Delta = 26' 46' 45.0" (RT)$ $D = 8' 44' 50.8"$ $L = 306.14'$ $T = 155.92'$ $R = 655.00'$ $Ds = 40 MPH$ $e_{MAX} = 0.04$ AHEAD = N 86° 33' 23.53" E
---	---

