

STATE OF NORTH CAROLINA
DIVISION OF HIGHWAYS

STATE PROJECT REFERENCE NO.	SHEET NO.
B-4279	TCP-1

**PLAN FOR PROPOSED
TRAFFIC CONTROL, MARKING & DELINEATION
STANLY COUNTY**

B-4279

ROADWAY STANDARD DRAWINGS

THE FOLLOWING ROADWAY STANDARDS AS APPEAR IN "ROADWAY STANDARD DRAWINGS"- PROJECT SERVICES UNIT-N.C. DEPARTMENT OF TRANSPORTATION-RALEIGH, N.C., DATED JULY 2006 ARE APPLICABLE TO THIS PROJECT AND BY REFERENCE HEREBY ARE CONSIDERED A PART OF THESE PLANS:

STD. NO.	TITLE
1101.03	TEMPORARY ROAD CLOSURES
1101.05	WORK ZONE VEHICLE ACCESSES
1101.11	TRAFFIC CONTROL DESIGN TABLES
1110.01	STATIONARY WORK ZONE SIGNS
1110.02	PORTABLE WORK ZONE SIGNS
1130.01	DRUM
1135.01	CONES
1145.01	BARRICADES
1205.01	PAVEMENT MARKINGS - LINE TYPES & OFFSETS
1205.02	PAVEMENT MARKINGS - 2 LANE & MULTILANE ROADWAYS
1205.12	PAVEMENT MARKINGS - BRIDGES
1250.01	PAVEMENT MARKER SPACING
1251.01	RAISED PAVEMENT MARKERS (TEMPORARY & PERMANENT)
1261.01	GUARDRAIL & BARRIER DELINEATOR SPACING
1261.02	GUARDRAIL & BARRIER DELINEATOR TYPES
1262.01	GUARDRAIL END DELINEATION

INDEX OF SHEETS

SHEET NO.	TITLE
TCP-1	LIST OF APPLICABLE ROADWAY STANDARD DRAWINGS, INDEX OF SHEETS, LEGEND AND PAVEMENT MARKING SCHEDULE.
TCP-2	PROJECT NOTES, LOCAL NOTES, AND PHASING.
TCP-3 & 4	OFF-SITE DETOUR / SIGN DETAILS

LEGEND

- GENERAL**
- DIRECTION OF TRAFFIC FLOW
 - NORTH ARROW
 - PROPOSED PVMT. EXIST. PVMT.
 - WORK AREA
 - REMOVAL OF EXISTING PAVEMENT

- TRAFFIC CONTROL DEVICES**
- TYPE I BARRICADE
 - TYPE II BARRICADE
 - TYPE III BARRICADE
 - CONE
 - DRUM SKINNY DRUM
 - FLASHING ARROW PANEL (TYPE C)
 - STATIONARY SIGN
 - PORTABLE SIGN
 - STATIONARY OR PORTABLE SIGN
 - CRASH CUSHION
 - CHANGEABLE MESSAGE SIGN
 - TRUCK MOUNTED IMPACT ATTENUATOR (TMIA)
 - POLICE
 - FLAGGER

- PAVEMENT MARKINGS**
- CRYSTAL/CRYSTAL PAVEMENT MARKER
 - YELLOW/YELLOW PAVEMENT MARKER
 - CRYSTAL/RED PAVEMENT MARKER
 - PAVEMENT MARKING SYMBOLS

TIP PROJECT:

20-JUN-2008 07:16
\\dot\dfsroot\proj\proj\projects\b\4279\traffic\trafficcontrol\top\b-4279_tc_tcp_01.dgn
billverman AT WZTC224103

APPROVED: DATE: <u>Dec 20, 08</u>	PLAN PREPARED BY: N.C.D.O.T. WORK ZONE TRAFFIC CONTROL UNIT
SEAL 	J. S. BOURNE, P.E. TRAFFIC CONTROL ENGINEER
	J. S. KITE, P.E. TRAFFIC CONTROL PROJECT ENGINEER
	J. D. KUSE, P.E. TRAFFIC CONTROL PROJECT DESIGN ENGINEER
	R. M. GARRETT TRAFFIC CONTROL DESIGN ENGINEER / TECHNICIAN

PROJECT NOTES

PROJ. REFERENCE NO.	SHEET NO.
B-4279	TCP-2

GENERAL NOTES

CHANGES MAY BE REQUIRED WHEN PHYSICAL DIMENSIONS IN THE DETAIL DRAWINGS, STANDARD DETAILS AND ROADWAY DETAILS ARE NOT ATTAINABLE TO MEET FIELD CONDITIONS, OR RESULT IN DUPLICATE, OR UNDESIRE OVERLAPPING OF DEVICES. MODIFICATION MAY INCLUDE: MOVING, SUPPLEMENTING, COVERING OR REMOVAL OF DEVICES, AS DIRECTED BY THE ENGINEER.

THE FOLLOWING GENERAL NOTES APPLY AT ALL TIMES FOR THE DURATION OF THE CONSTRUCTION PROJECT, EXCEPT WHEN OTHERWISE NOTED IN THE PLAN, OR DIRECTED BY THE ENGINEER.

PAVEMENT EDGE DROP OFF REQUIREMENTS

- A) BACKFILL AT A 6:1 SLOPE UP TO THE EDGE AND ELEVATION OF EXISTING PAVEMENT IN AREAS ADJACENT TO AN OPENED TRAVEL LANE THAT HAS AN EDGE OF PAVEMENT DROP-OFF AS FOLLOWS:

BACKFILL DROP-OFFS THAT EXCEED 2 INCHES ON ROADWAYS WITH POSTED SPEED LIMITS OF 45 MPH OR GREATER.

BACKFILL DROP-OFFS THAT EXCEED 3 INCHES ON ROADWAYS WITH POSTED SPEED LIMITS LESS THAN 45 MPH.

BACKFILL WITH SUITABLE COMPACTED MATERIAL, AS APPROVED BY THE ENGINEER, AT NO EXPENSE TO THE DEPARTMENT.

TRAFFIC PATTERN ALTERATIONS

- B) NOTIFY THE ENGINEER TWENTY ONE (21) CALENDAR DAYS PRIOR TO ANY TRAFFIC PATTERN ALTERATION.

SIGNING

- C) STATE FORCES WILL BE RESPONSIBLE FOR PERMANENT SIGNING.
 D) STATE FORCES WILL BE RESPONSIBLE FOR DETOUR SIGNING OFF THE PROJECT LIMITS.
 E) STATE FORCES WILL COVER OR REMOVE ALL DETOUR SIGNS OFF THE PROJECT LIMITS WHEN A DETOUR IS NOT IN OPERATION.
 F) ENSURE ALL NECESSARY SIGNING IS IN PLACE PRIOR TO ALTERING ANY TRAFFIC PATTERN.

PAVEMENT MARKINGS AND MARKERS

- G) STATE FORCES WILL INSTALL PAVEMENT MARKINGS AND PAVEMENT MARKERS ON THE FINAL SURFACE AS FOLLOWS:

ROAD NAME	MARKING	MARKER
SR 1963	PAINT	PERMANENT RAISED

LOCAL NOTES

- ENSURE PROPOSED ROAD CLOSURE AND DETOUR ROUTE IS COORDINATED THROUGH DIVISION OFFICE WITH THE STANLY COUNTY SCHOOLS AND STANLY COUNTY EMERGENCY MEDICAL SERVICES PRIOR TO SR 1963 (ST MARTIN ROAD) CLOSURE AND DETOUR OPERATION.
- INSTALL SIGNS BEFORE THE BARRICADES WHEN CLOSING THE ROADWAY TO TRAFFIC. REMOVE BARRICADES BEFORE SIGNS WHEN OPENING ROADWAY TO TRAFFIC. INSTALL/ REMOVE SIGNS/BARRICADES WITHIN SAME CALENDAR DAY.
- ALL SIGN SPACING DIMENSIONS ARE APPROXIMATE, FIELD ADJUST AS NECESSARY OR AS DIRECTED.
- USING INCIDENTAL STONE AS NECESSARY, MAINTAIN VEHICULAR ACCESS TO ALL DRIVEWAYS WITHIN THE CLOSED PORTION OF SR 1963 (ST MARTIN RD) DURING THE LIFE OF THE CONTRACT UNLESS OTHERWISE NOTED IN THE PHASING OR DIRECTED BY THE ENGINEER.
- USE FLAGGERS AS NEEDED TO MAINTAIN LOCAL TRAFFIC WITHIN ROAD CLOSURE. FLAGGING WILL BE INCIDENTAL TO THE COST OF THE CONTRACT.
- REAPPLY PAVEMENT MARKINGS UP TO 100' BEYOND CONSTRUCTION LIMITS IF NEEDED TO REPAIR DAMAGE AND/OR TRACKING FROM CONSTRUCTION.

PHASING

NOTE: GIVE 21 DAY NOTICE TO ALLOW STATE FORCES TO INSTALL OFFSITE DETOUR SIGNAGE.

STEP 1 - USING ROADWAY STANDARD DRAWING NO. 1101.03, SHEET 1 OF 9, (AS NEEDED) AND TCP-3 INSTALL DETOUR SIGNS AND DEVICES TO CLOSE SR 1963 (ST MARTIN RD) TO THROUGH TRAFFIC. (SEE LOCAL NOTES 1, 2, 3, AND TCP - 3)

STEP 2 - CONSTRUCT THE FOLLOWING WITHIN THE ROAD CLOSURE: (SEE LOCAL NOTES 4 & 5)


- REMOVE THE EXISTING STRUCTURE
- CONSTRUCT THE PROPOSED STRUCTURE
- CONSTRUCT THE PROPOSED ROADWAY SECTION -L- INCLUDING THE FINAL LAYER OF SURFACE FROM STA. 12+07.50 TO STA. 18+87.50

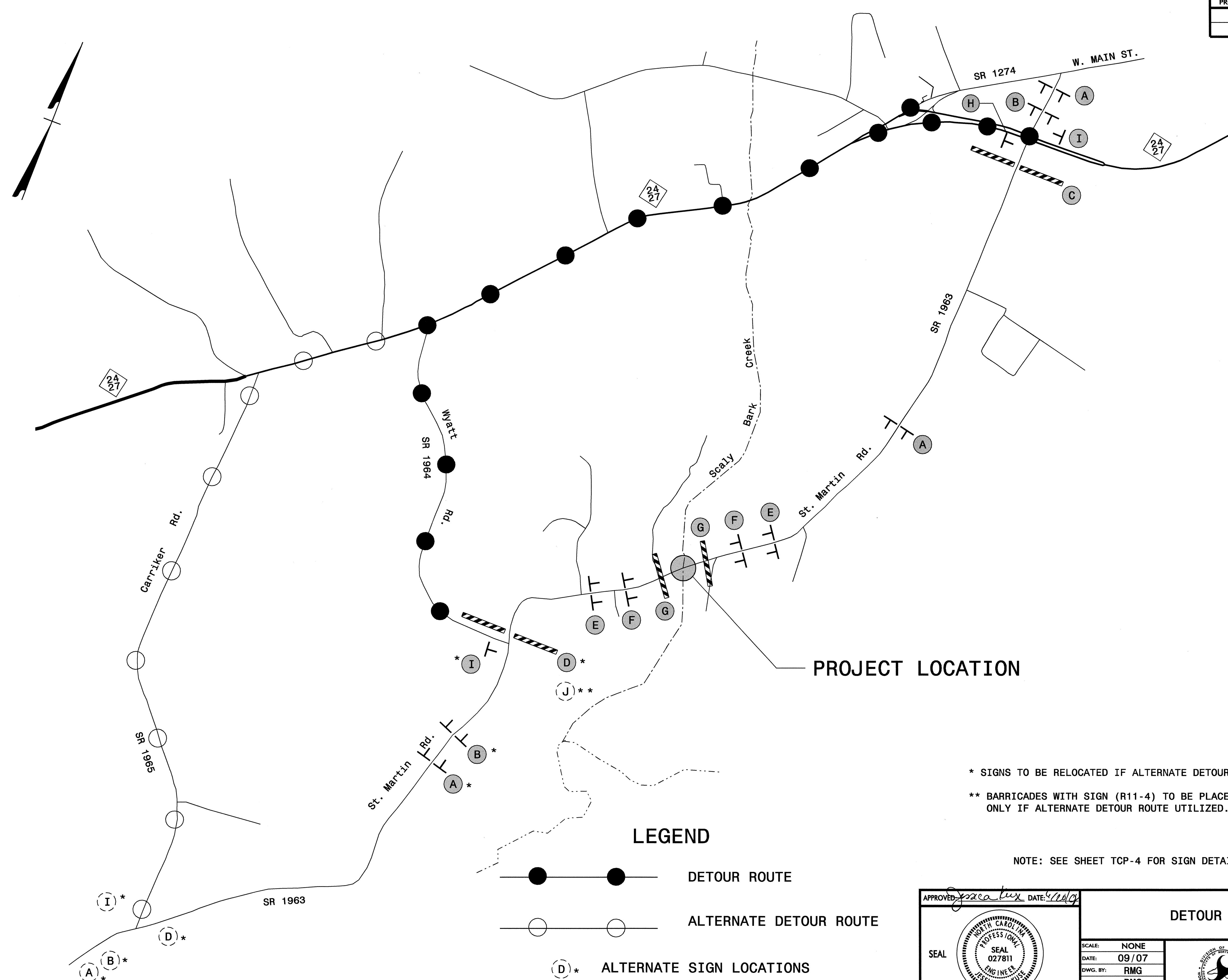
AT NO TIME SHOULD THE DIFFERENCE IN ELEVATION BETWEEN ROADWAY SURFACES EXCEED 3" WITHIN THE AREA BEING MAINTAINED FOR LOCAL TRAFFIC.

NOTE: GIVE 21 DAY NOTICE TO ALLOW STATE FORCES TO INSTALL FINAL PAVEMENT MARKINGS AND REMOVE OFFSITE DETOUR SIGNS.

STEP 3 - ENSURE THAT ALL FINAL PAVEMENT MARKINGS INSTALLED BY STATE FORCES ARE IN PLACE PRIOR TO REMOVING ALL TRAFFIC CONTROL DEVICES AND REOPENING SR 1963(ST MARTIN RD) TO A 2-LANE, 2-WAY PATTERN. (SEE LOCAL NOTE 2) THE ROAD NEEDS TO BE RE-OPENED PRIOR TO THE REMOVAL OF OFFSITE DETOUR SIGNS.

20-JUN-2008 07:46 \\dot\dfsroot\01\prco\1\ppr\projects-b\4279\tr\traffic\tr\officecontrol\top\b-4279.tc_top.02.dgn
billverman AT WZTC224103

APPROVED: <i>Jessica D. Kusk</i> DATE: 6/20/08 	PROJECT NOTES / PHASING	<table border="1" style="width: 100%; border-collapse: collapse;"> <tr> <td>SCALE:</td> <td>NONE</td> </tr> <tr> <td>DATE:</td> <td>06/07</td> </tr> <tr> <td>DWG. BY:</td> <td>HJW</td> </tr> <tr> <td>DESIGN BY:</td> <td>RMG</td> </tr> <tr> <td>REVIEWED BY:</td> <td>JDK</td> </tr> </table>	SCALE:	NONE	DATE:	06/07	DWG. BY:	HJW	DESIGN BY:	RMG	REVIEWED BY:	JDK
SCALE:	NONE											
DATE:	06/07											
DWG. BY:	HJW											
DESIGN BY:	RMG											
REVIEWED BY:	JDK											
		<table border="1" style="width: 100%; border-collapse: collapse;"> <tr> <td colspan="2" style="text-align: center;">REVISIONS</td> </tr> <tr> <td style="width: 50%;"></td> <td style="width: 50%;"></td> </tr> <tr> <td></td> <td></td> </tr> </table>	REVISIONS									
REVISIONS												



PROJECT LOCATION

* SIGNS TO BE RELOCATED IF ALTERNATE DETOUR ROUTE UTILIZED.
 ** BARRICADES WITH SIGN (R11-4) TO BE PLACED AT THIS LOCATION ONLY IF ALTERNATE DETOUR ROUTE UTILIZED.

NOTE: SEE SHEET TCP-4 FOR SIGN DETAILS

LEGEND

- — ● DETOUR ROUTE
- — ○ ALTERNATE DETOUR ROUTE
- (D)* ALTERNATE SIGN LOCATIONS

APPROVED: <i>Spencer</i> DATE: 09/07	DETOUR ROUTE	
	SCALE: NONE	
	DATE: 09/07	
	DWG. BY: RMG	
	DESIGN BY: RMG	
REVIEWED BY: JDK	REVISIONS	

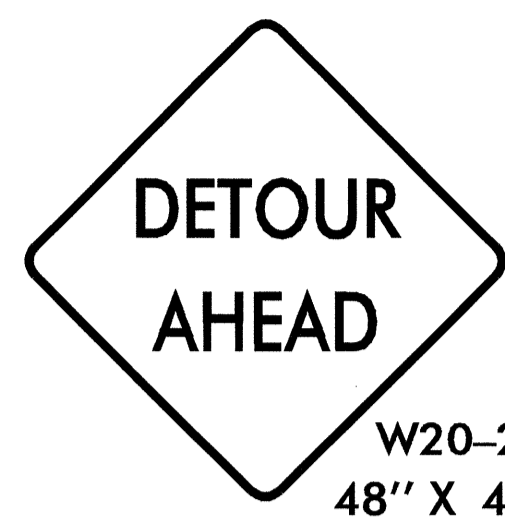
20-JUN-2008 07:45
 \\dot\dfsroot\proj\proj\projects-b\4279\trafficoontrol\top\b-4279_top-03.dgn
 bilverman AT WZTC224103



W20-3
48" X 48"

A

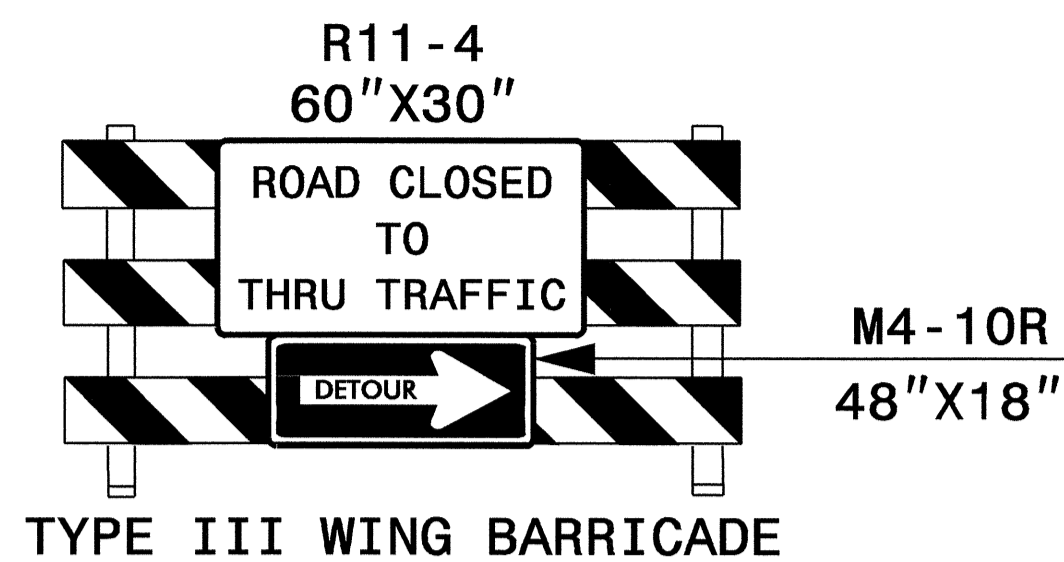
(6 EA)



W20-2
48" X 48"

B

(4 EA)



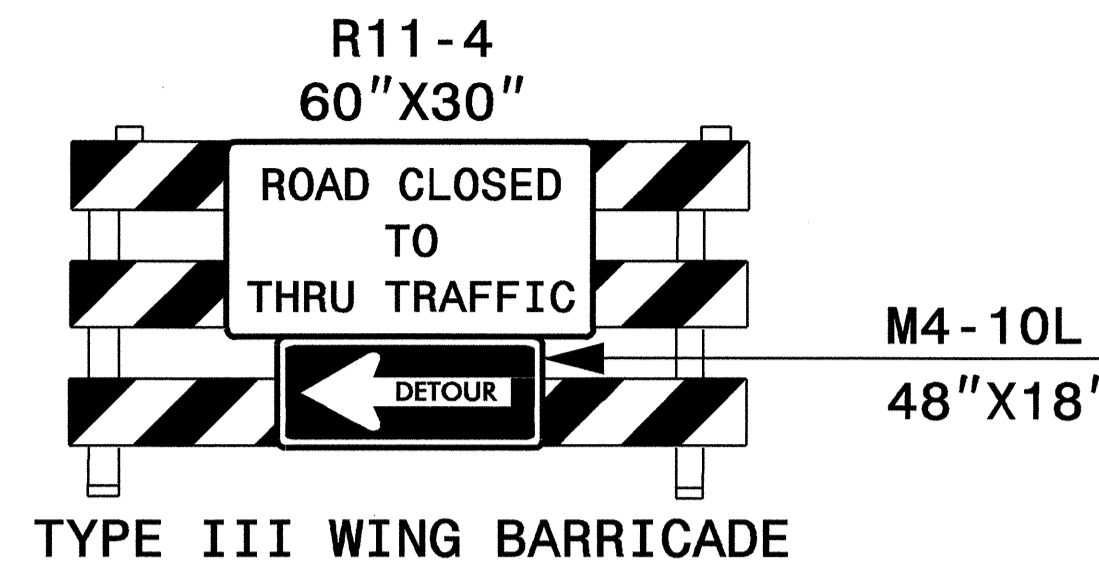
R11-4
60"X30"

M4-10R
48"X18"

TYPE III WING BARRICADE

C

(2 EA)



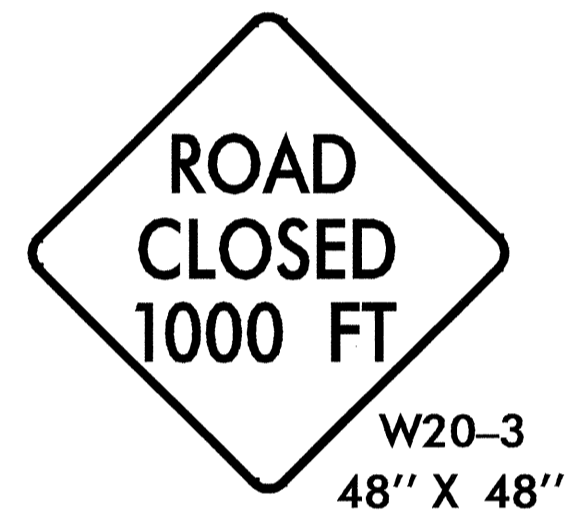
R11-4
60"X30"

M4-10L
48"X18"

TYPE III WING BARRICADE

D

(2 EA)



W20-3
48" X 48"

E

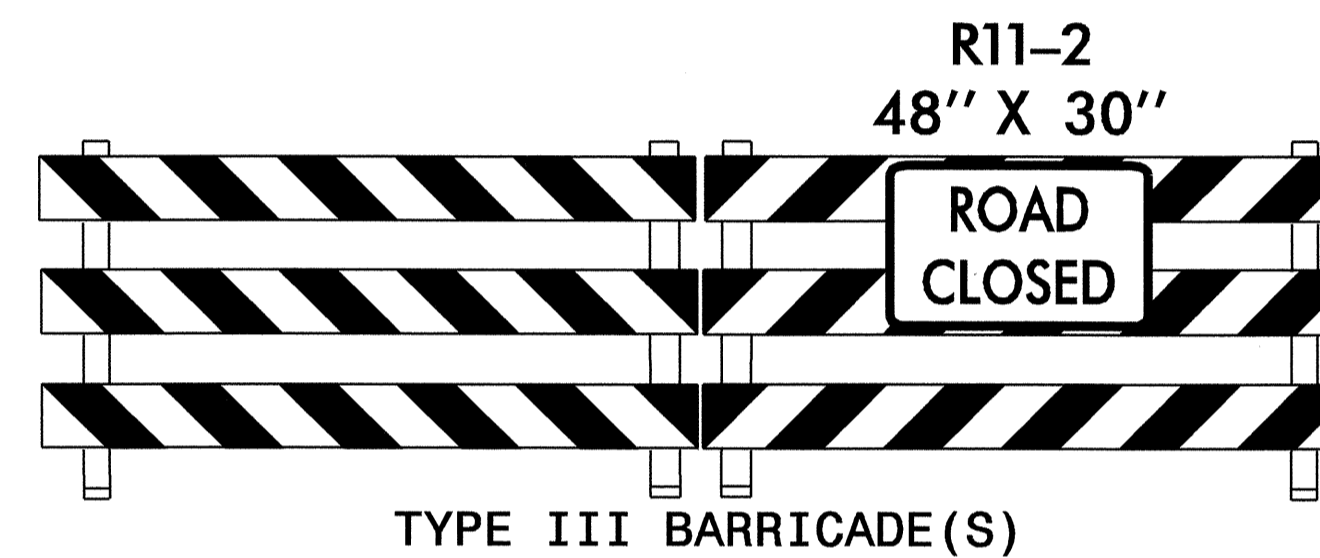
(4 EA)



W20-3
48" X 48"

F

(4 EA)



R11-2
48" X 30"

TYPE III BARRICADE(S)

G

(2 SETS)



W20-3
48" X 48"



SP-4R
42" X 12"

H

(1 EA)



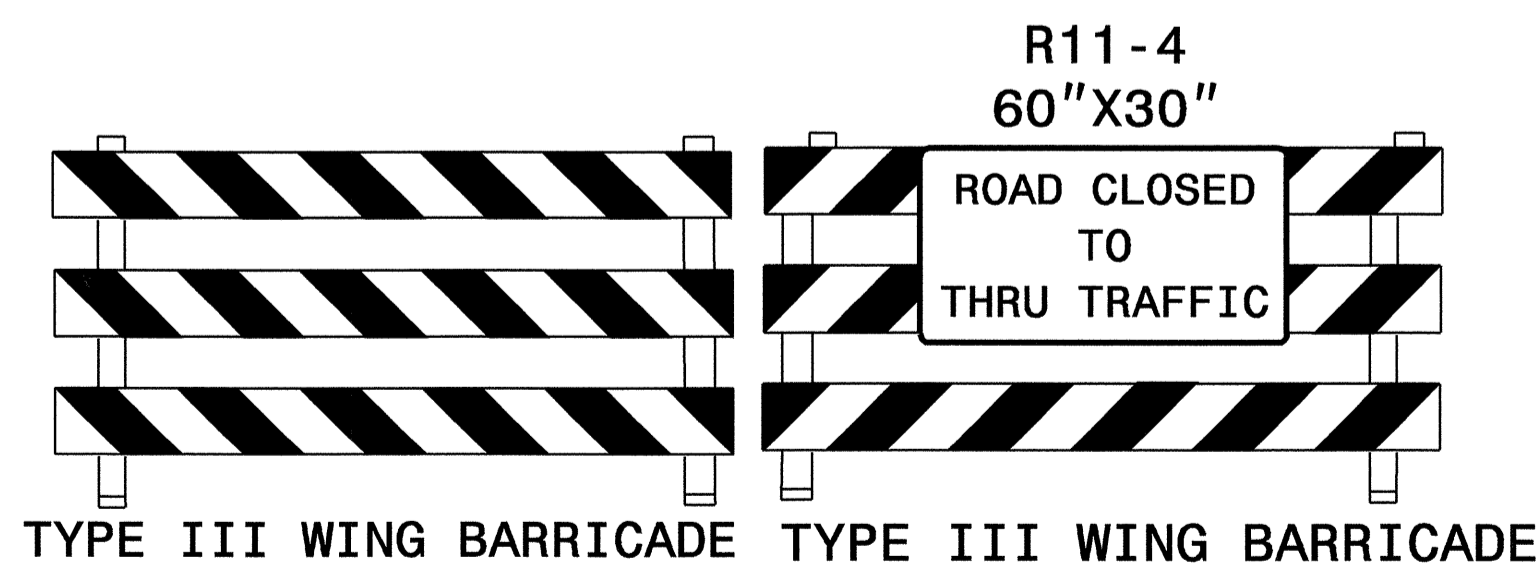
W20-3
48" X 48"



SP-4L
42" X 12"

I

(2 EA)



R11-4
60"X30"

TYPE III WING BARRICADE TYPE III WING BARRICADE

J

(1 EA) IF ALT DETOUR
ROUTE UTILIZED ONLY

20-JUN-2008 07:45
 \\dot\dfsroot\proj\proj\projects\b4279\traffic\trafficcontrol\top\b-4279_tc_top_04.dgn
 bilverman AT WZTC224103

APPROVED: <i>Jessica D. Kuy</i> DATE: 4/20/09	OFF-SITE DETOUR SIGNING	
	SCALE: NONE	
	DATE: 09/07	
	DWG. BY: RMG	
	DESIGN BY: RMG	
REVIEWED BY: JDK	REVISIONS	