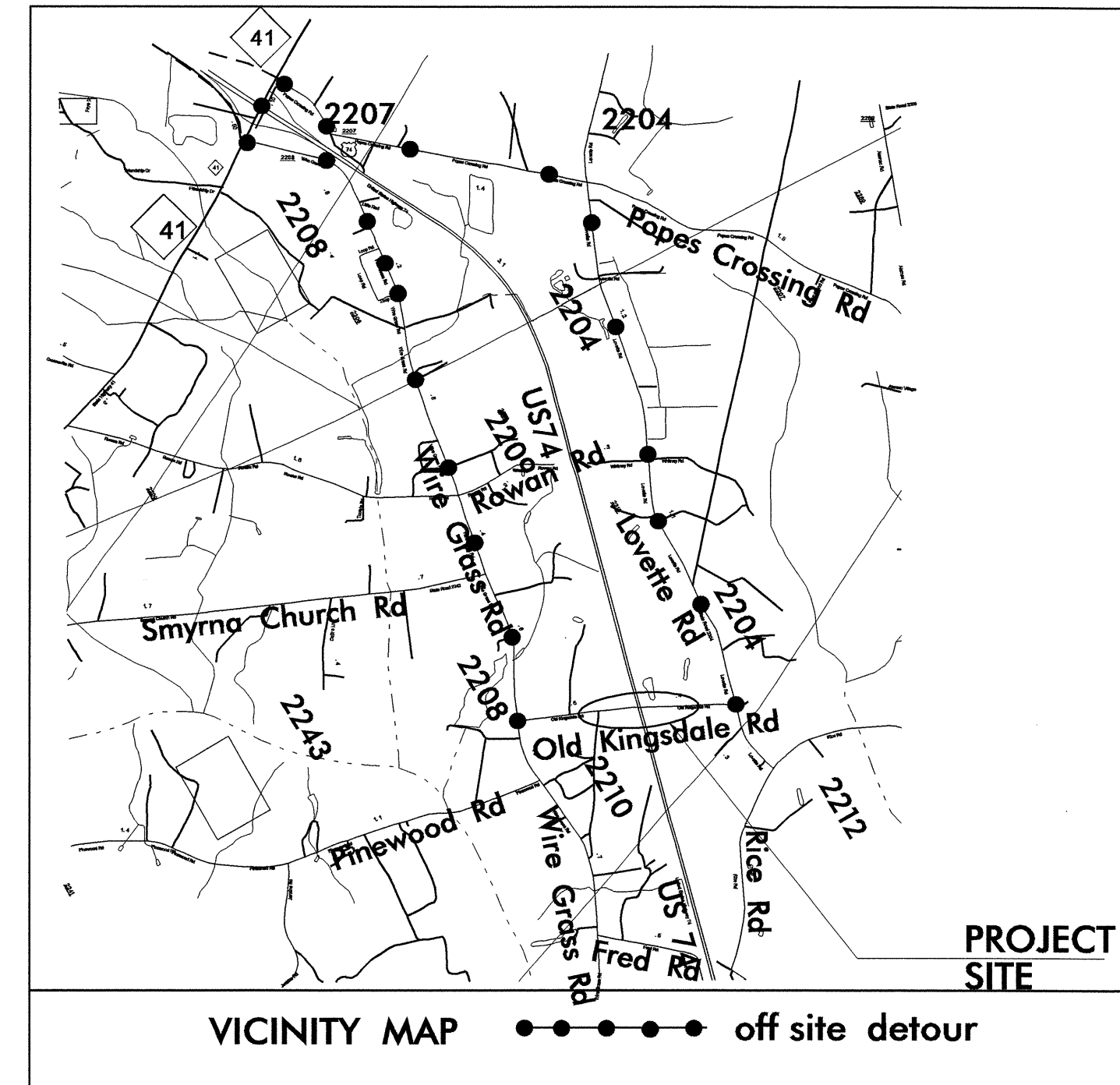


STATE OF NORTH CAROLINA
DIVISION OF HIGHWAYS

UTILITY CONSTRUCTION PLANS
ROBESON COUNTY

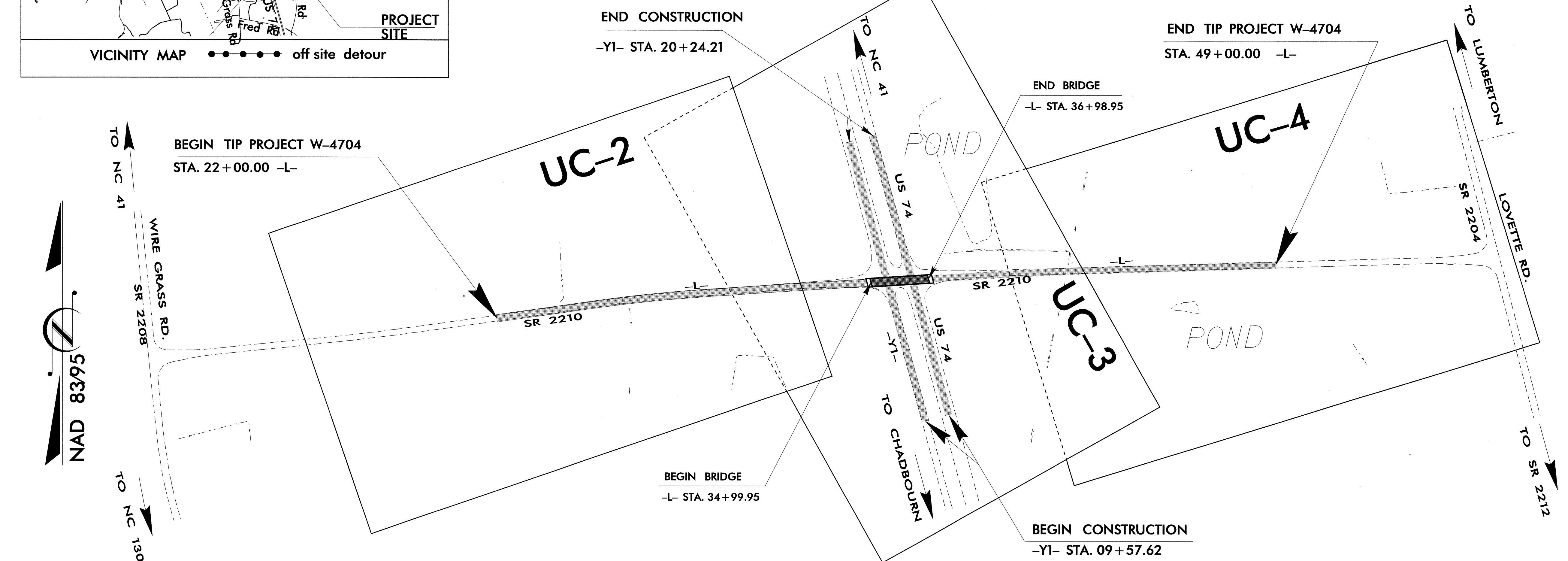
LOCATION: BRIDGE OVER US 74 AT SR 2210
(OLD KINGSDALE RD)

TYPE OF WORK: UTILITY CONSTRUCTION

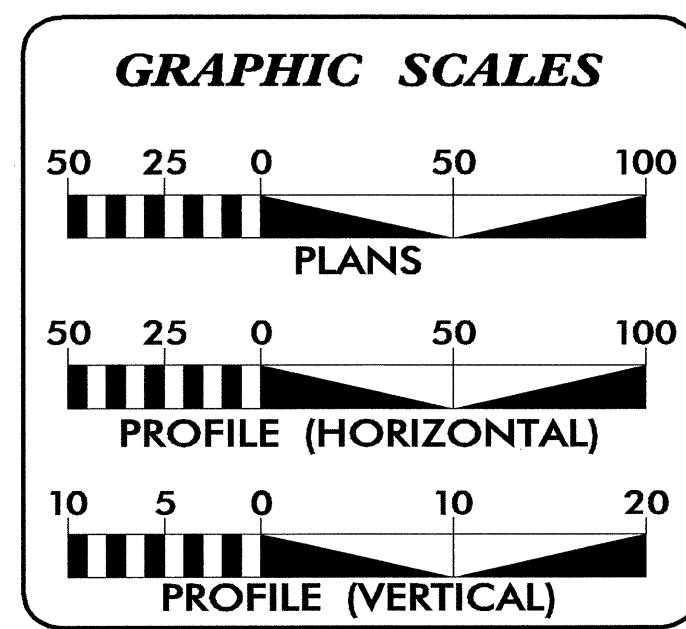


TIP PROJECT: W-4704

CONTRACT: C201968



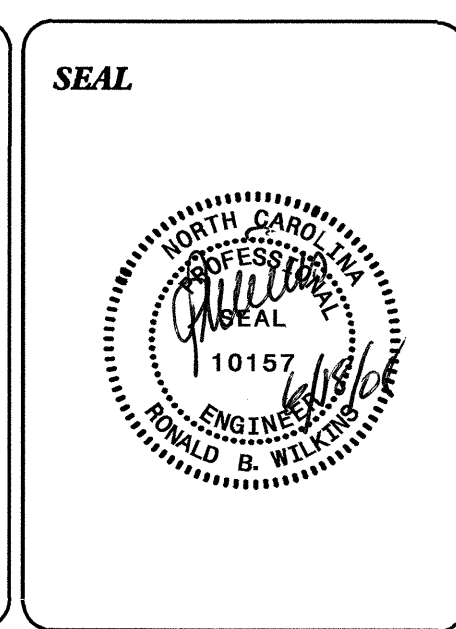
THIS IS A CONTROL OF ACCESS PROJECT.
CLEARING ON THIS PROJECT SHALL BE PERFORMED TO THE LIMITS ESTABLISHED BY METHOD III.
THIS PROJECT IS NOT WITHIN ANY MUNICIPAL BOUNDARY.



INDEX OF SHEETS	
SHEET NO.	DESCRIPTION
UC-1	TITLE SHEET
UC-2 THRU UC-4	UTILITY CONSTRUCTION PLAN SHEETS

WATER OWNER ON PROJECT

(1) WATER: ROBESON COUNTY



PREPARED IN THE OFFICE OF:
DIVISION OF HIGHWAYS
PROJECT SERVICES
UTILITY SECTION

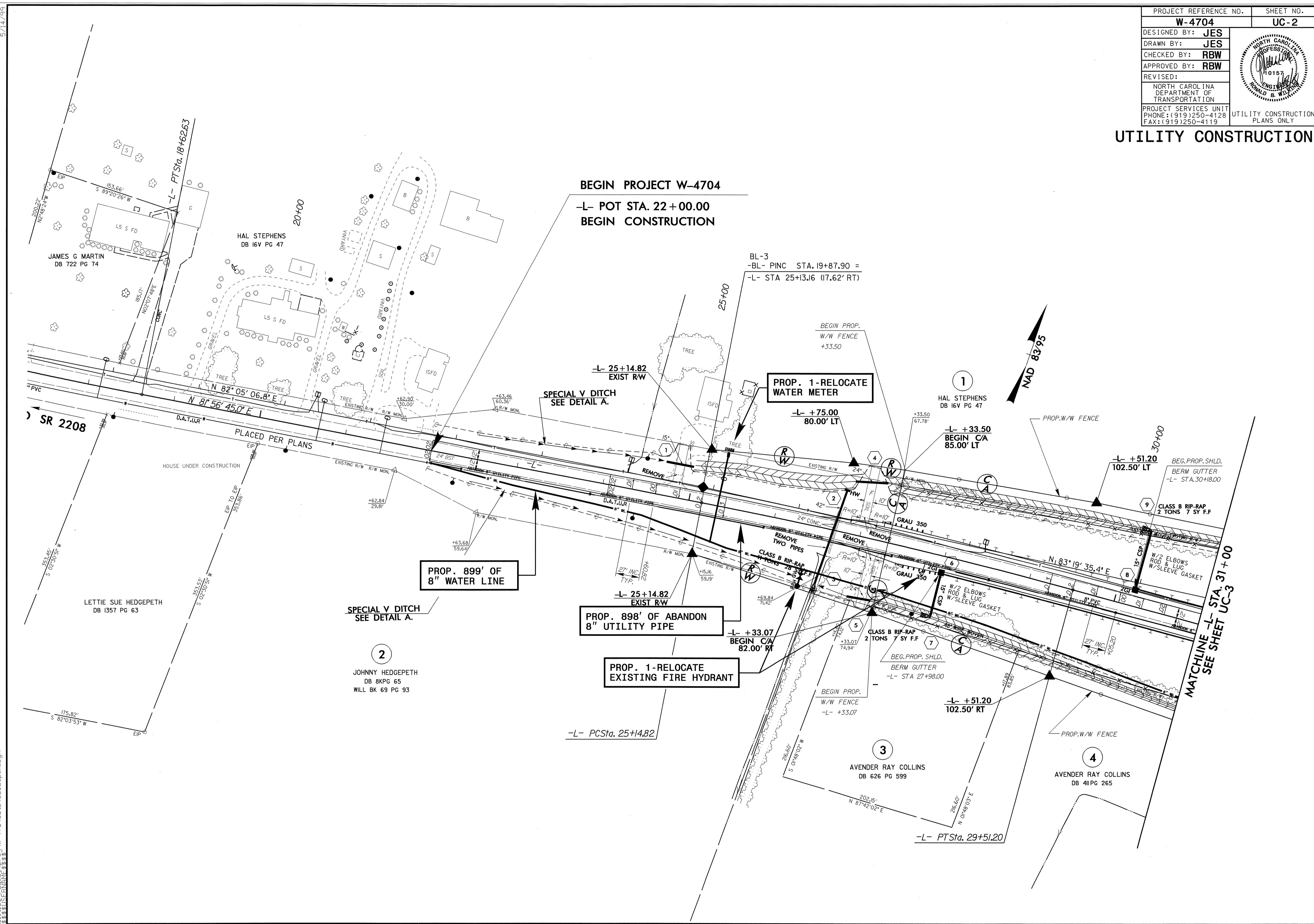
1591 MAIL SERVICES CENTER
RALEIGH NC 27699-1591
PHONE (919) 250-4128
FAX (919) 250-4119

Roger Worthington, P.E. UTILITIES SECTION ENGINEER
R.B. Wilkins, P.E. UTILITIES SQUAD LEADER PROJECT ENGINEER
James E. Swinson UTILITIES PROJECT DESIGNER

19-JUN-2008 07:03
P:\utilities\rdy\ut\proj\w-4704\ut_title_ucl_psh.dgn
\$\$\$\$\$USERNAME\$\$\$\$\$

PROJECT REFERENCE NO.	SHEET NO.
W-4704	UC-2
DESIGNED BY: JES	
DRAWN BY: JES	
CHECKED BY: RBW	
APPROVED BY: RBW	
REVISED:	
NORTH CAROLINA DEPARTMENT OF TRANSPORTATION	
PROJECT SERVICES UNIT PHONE: (919) 250-4128 FAX: (919) 250-4119	
UTILITY CONSTRUCTION PLANS ONLY	

UTILITY CONSTRUCTION



BEGIN PROJECT W-4704
 -L- POT STA. 22+00.00
 BEGIN CONSTRUCTION

PROP. 1-RELOCATE WATER METER

PROP. 899' OF 8" WATER LINE


PROP. 899' OF ABANDON 8" UTILITY PIPE

PROP. 1-RELOCATE EXISTING FIRE HYDRANT

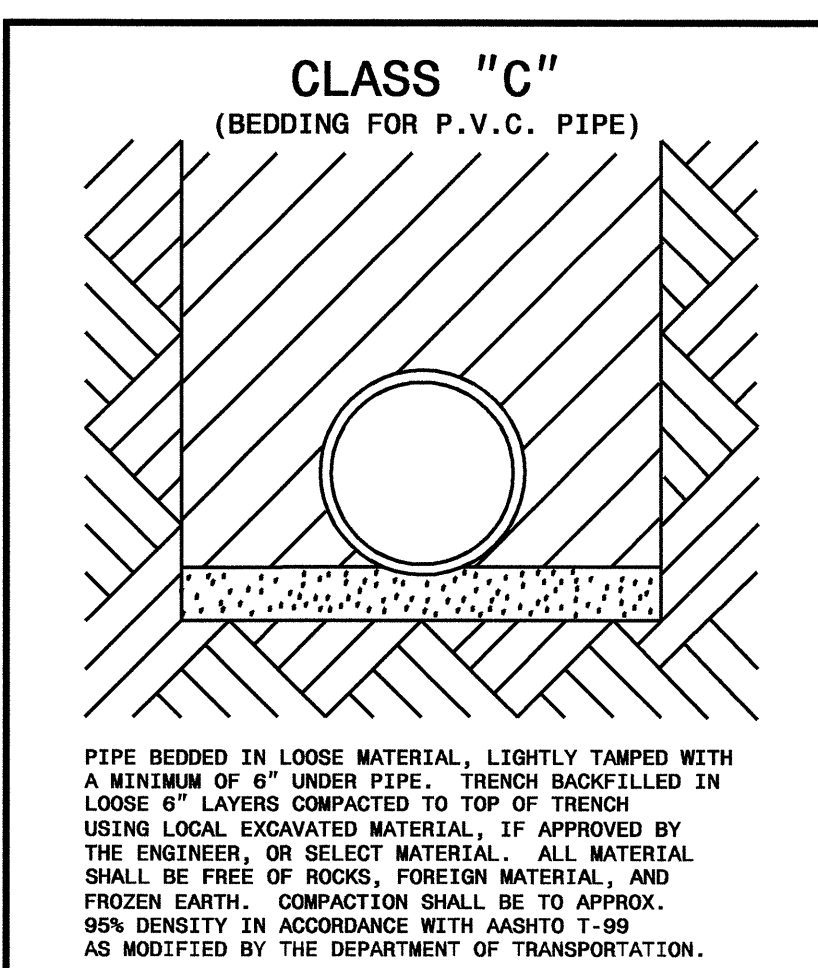
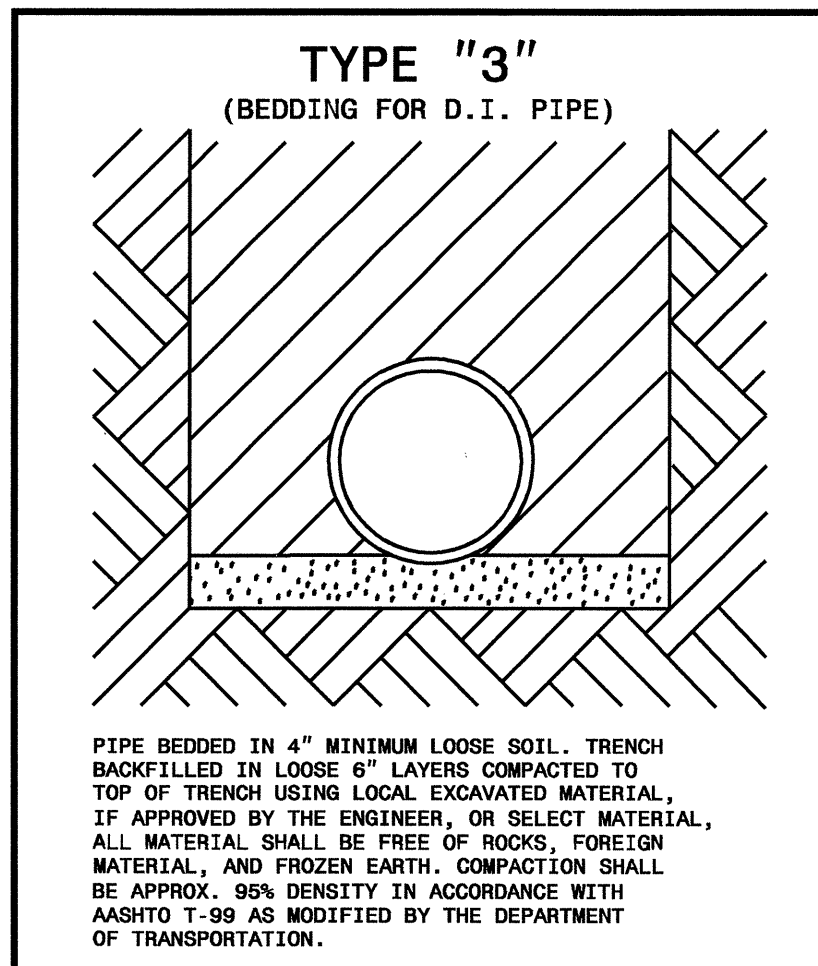
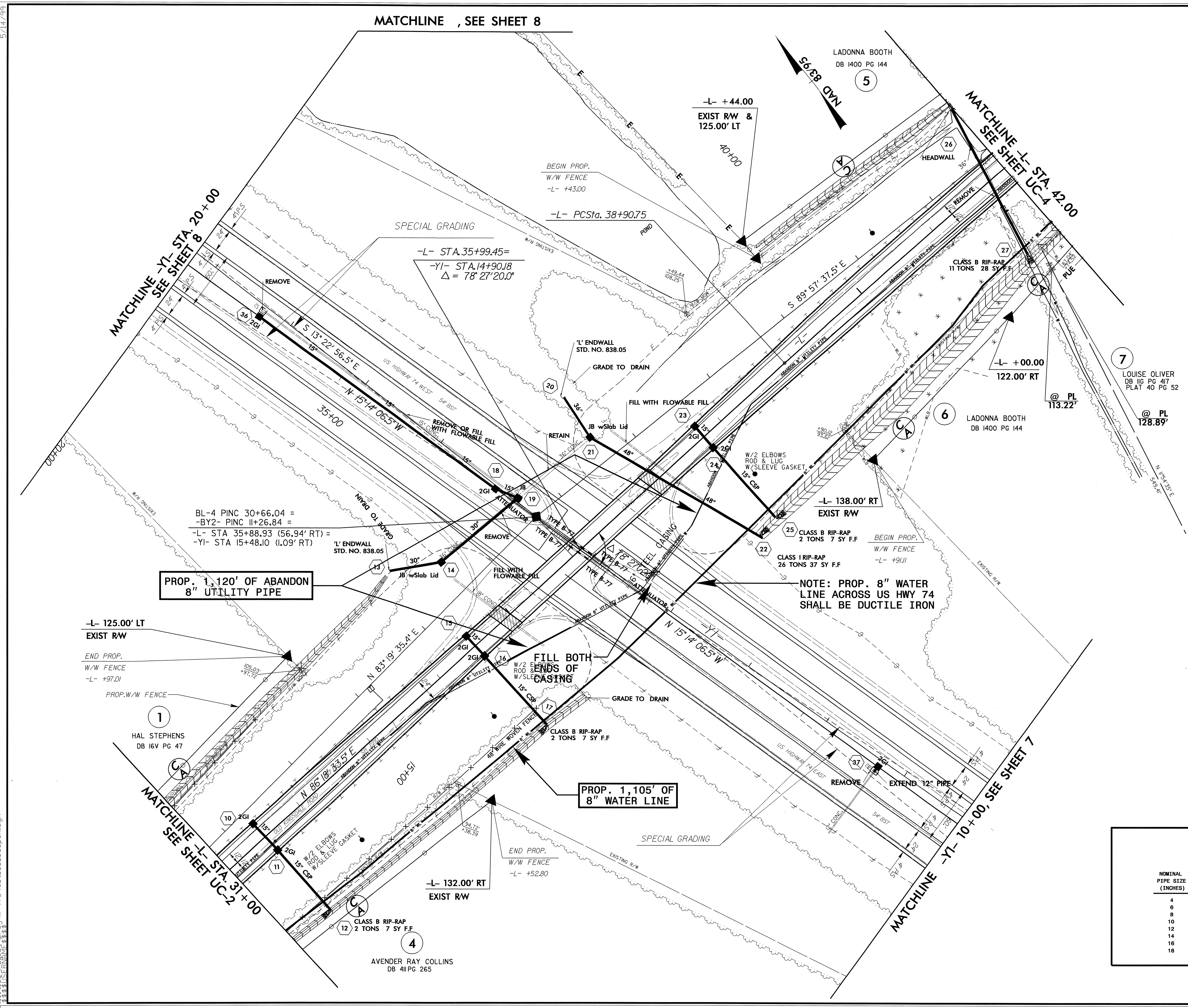
MATCHLINE -L- STA. 31+00
 SEE SHEET UC-3

5/14/99
 19-JUN-2008 07:02
 N:\projects\4704\w-4704-ut_4_uc2.psh.dgn

5/14/99

PROJECT REFERENCE NO.	SHEET NO.
W-4704	UC-3
DESIGNED BY: JES	
DRAWN BY: JES	
CHECKED BY: RBW	
APPROVED BY: RBW	
REVISED:	
NORTH CAROLINA DEPARTMENT OF TRANSPORTATION PROJECT SERVICES UNIT PHONE: (919) 250-4128 FAX: (919) 250-4119	
UTILITY CONSTRUCTION PLANS ONLY	

UTILITY CONSTRUCTION



MAXIMUM TRENCH WIDTH AT TOP OF PIPE

NOMINAL PIPE SIZE (INCHES)	TRENCH WIDTH (INCHES)	NOMINAL PIPE SIZE (INCHES)	TRENCH WIDTH (INCHES)
4	28	20	44
6	30	24	48
8	32	30	54
10	34	36	60
12	36	42	66
14	38	48	72
16	40	54	78
18	42		

19-JUN-2008 07:01
r:\uc3\1333\PROJECTS\UC3\W-4704-ut-5-uc3.psh.dgn

09/08/99

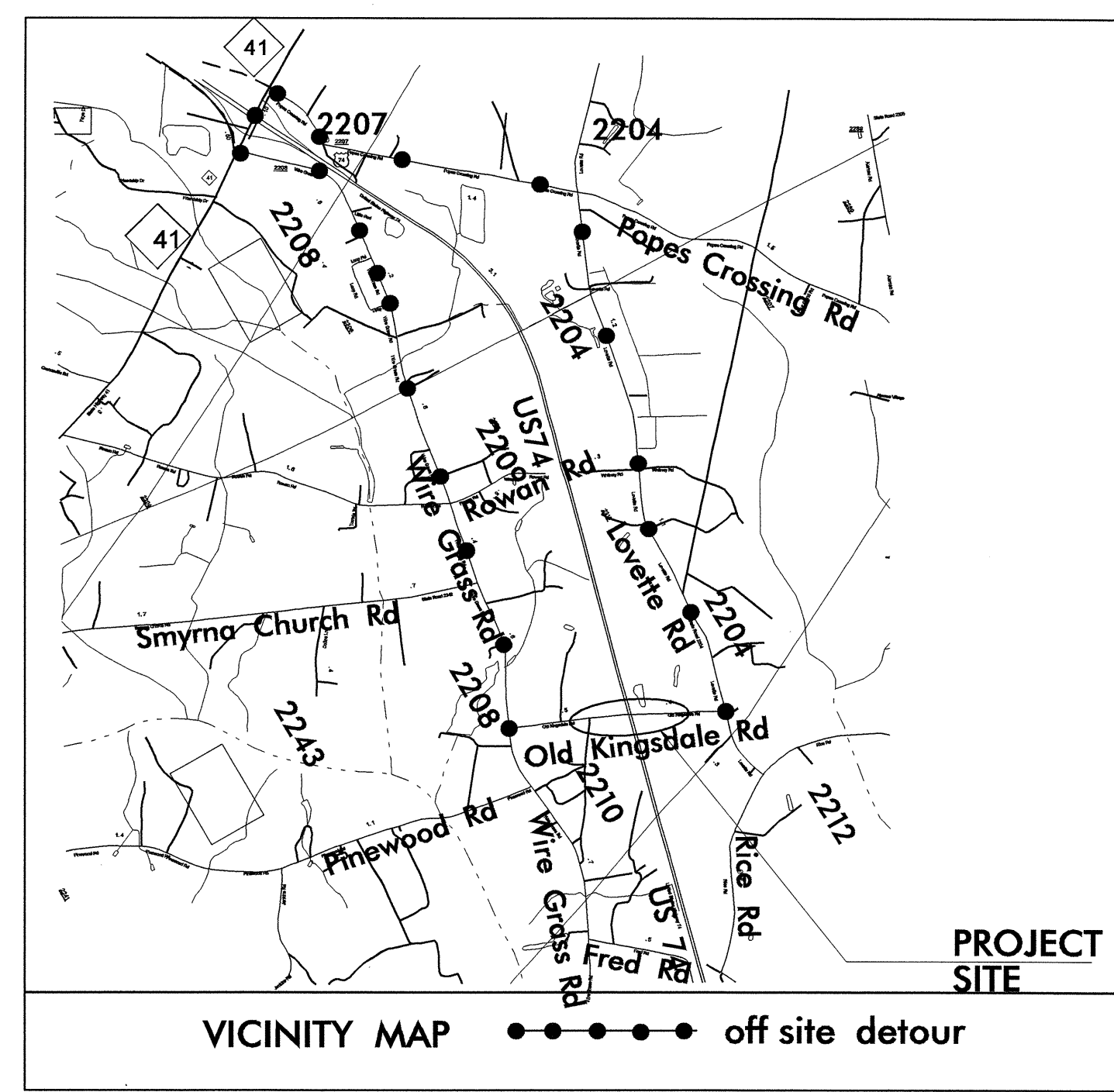
T.I.P. NO.	SHEET NO.
W-4704	UO-1

STATE OF NORTH CAROLINA
DIVISION OF HIGHWAYS

**UTILITY BY OTHERS PLANS
ROBESON COUNTY**

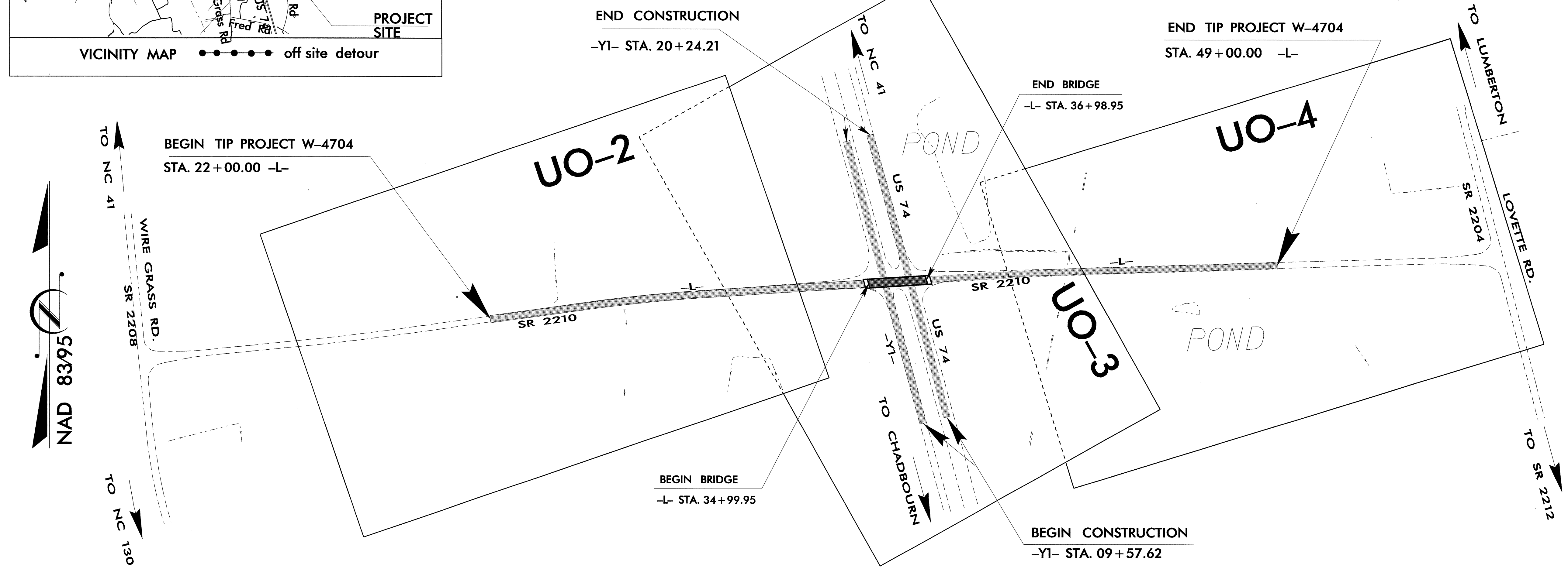
**LOCATION: BRIDGE OVER US 74 AT SR 2210
(OLD KINGSDALE RD)**

TYPE OF WORK: UTILITY BY OTHERS

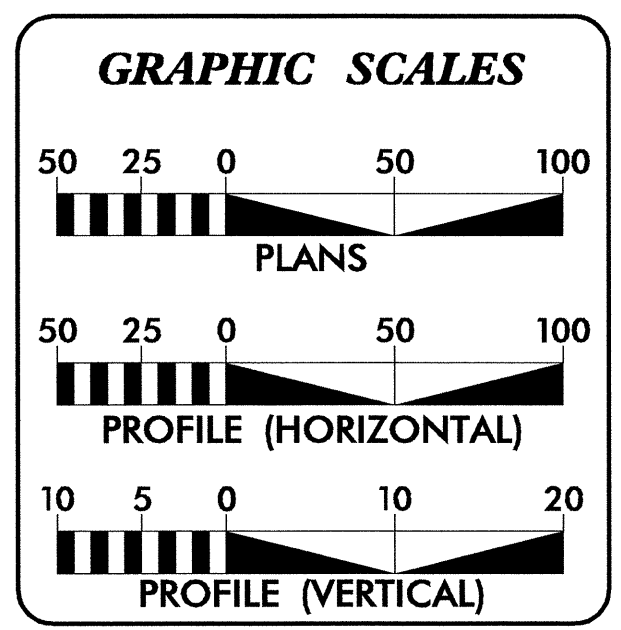


TIP PROJECT: W-7404

CONTRACT: C201968



THIS IS A CONTROL OF ACCESS PROJECT.
CLEARING ON THIS PROJECT SHALL BE PERFORMED TO THE LIMITS ESTABLISHED BY METHOD III.
THIS PROJECT IS NOT WITHIN ANY MUNICIPAL BOUNDARY.



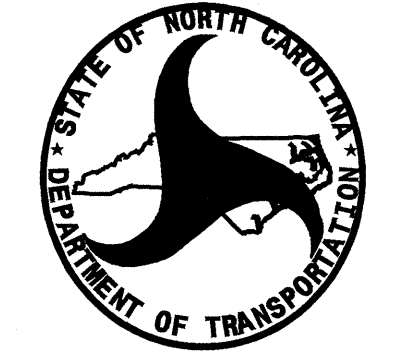
INDEX OF SHEETS

SHEET NO.	DESCRIPTION
UO-1	TITLE SHEET
UO-2 THRU UO-4	UTILITY BY OTHERS PLAN SHEETS

UTILITY OWNERS ON PROJECT

(1) TELEPHONE: AT&T

(2) POWER DISTRIBUTION: LUMBEE RIVER EMC



PREPARED IN THE OFFICE OF:
**DIVISION OF HIGHWAYS
PROJECT SERVICES
UTILITY SECTION**

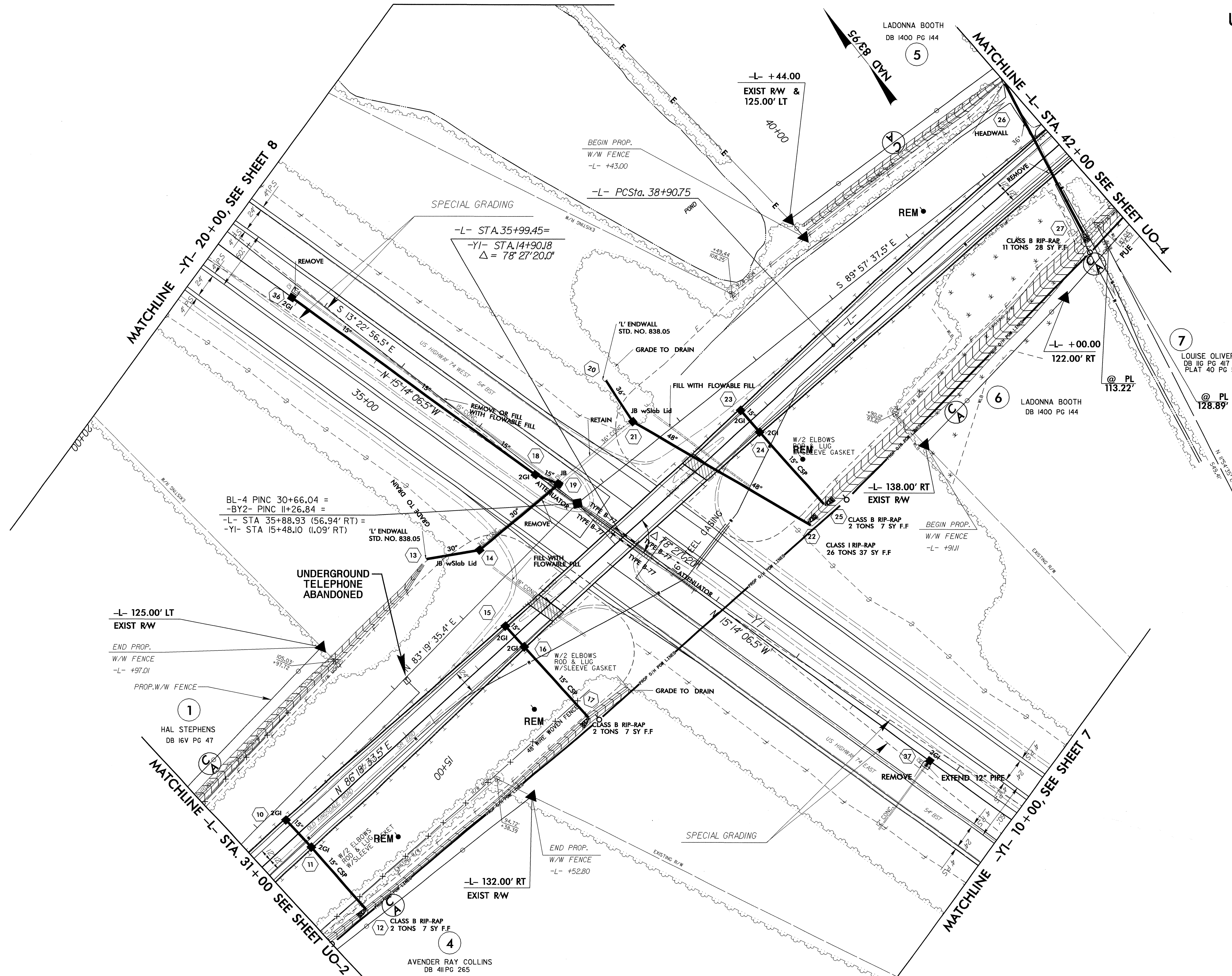
1591 MAIL SERVICES CENTER
RALEIGH, NC 27699-1591
PHONE (919) 250-4128
FAX (919) 250-4119

Roger Worthington, P.E. UTILITIES SECTION ENGINEER
R.B. Wilkins, P.E. UTILITIES SQUAD LEADER PROJECT ENGINEER
James E. Swinson UTILITIES PROJECT DESIGNER

24-JUN-2008 13:48
F:\utilities\rdy\ut\proj\w-4704_ut_title_uol_psh.dgn
\$\$\$\$\$USERNAME\$\$\$\$\$

UTILITIES BY OTHERS

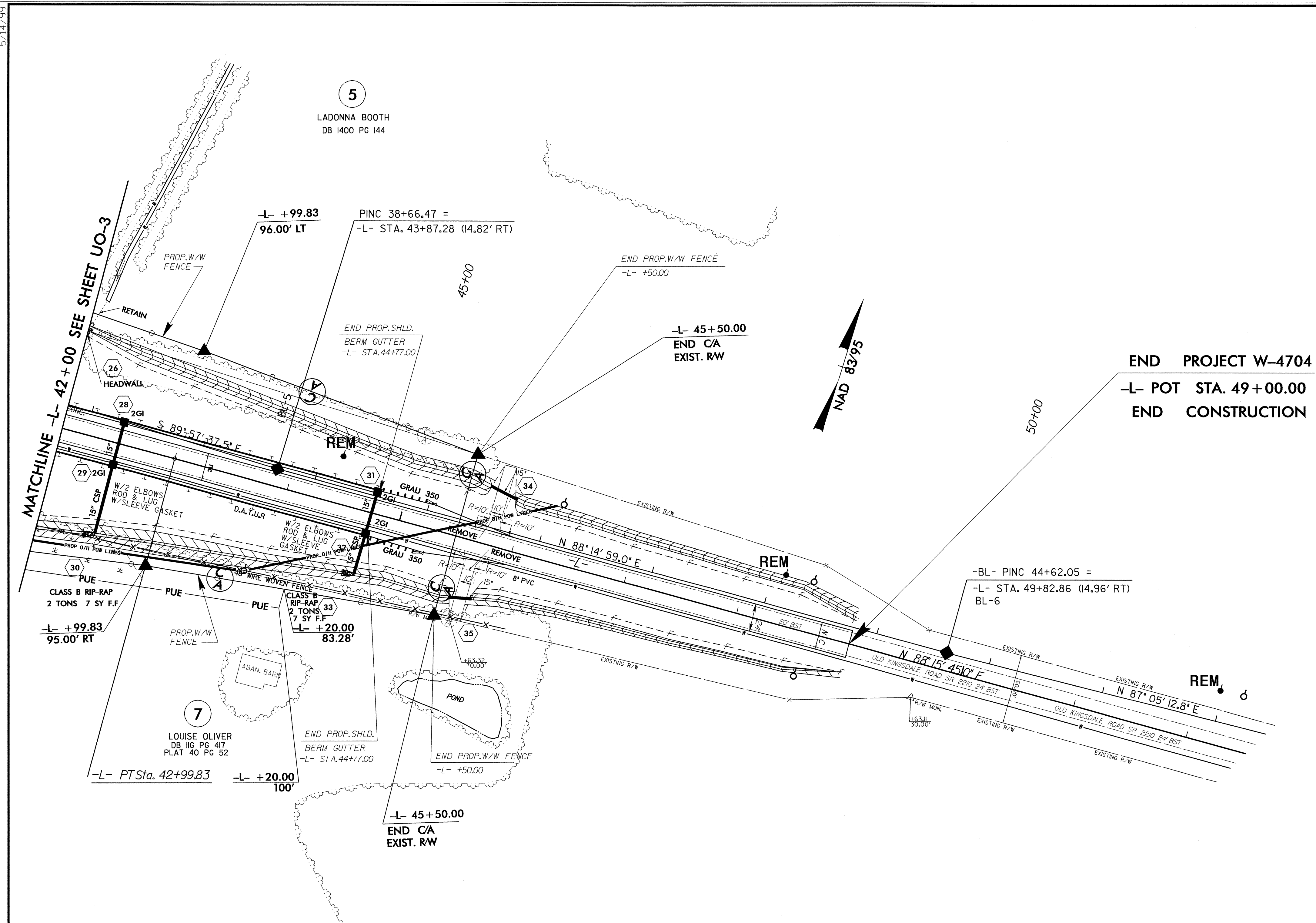
NOTE:
ALL PROPOSED UTILITY WORK
SHOWN ON THIS SHEET WILL
BE DONE BY OTHERS



5/14/99
 24-JUN-2008 13:53
 \\w-4704-ut-5-uo3-psd.dgn
 13:53:53
 13:53:53

UTILITIES BY OTHERS

NOTE:
ALL PROPOSED UTILITY WORK
SHOWN ON THIS SHEET WILL
BE DONE BY OTHERS



END PROJECT W-4704
-L- POT STA. 49+00.00
END CONSTRUCTION

5/14/99

24-JUN-2008 11:55
r:\u0001\24-JUN-2008 11:55
UTILITIES BY OTHERS.dgn