

090899

7/3/2008 5:15:44 PM C:\Users\2034\NC 211\Design\NC211\ec_1\table.dgn

TIP: R-5018

CONTRACT: C201810

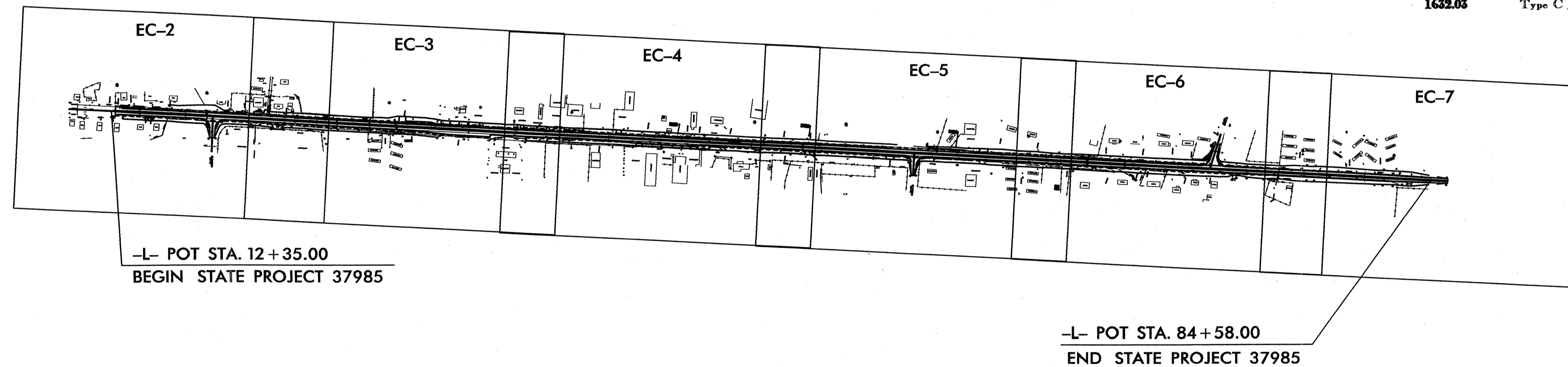
STATE OF NORTH CAROLINA
 DIVISION OF HIGHWAYS
 PLAN FOR PROPOSED
 HIGHWAY EROSION CONTROL

LOCATION: NC 211 FROM EAST OF NC 72
 TO EAST OF SNAKE RD. (SR. 2110)
 TYPE OF WORK: EROSION CONTROL

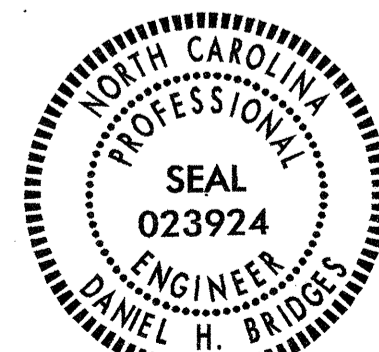
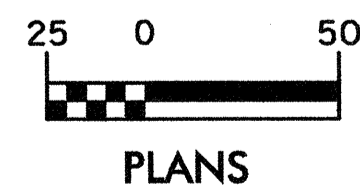
STATE	STATE PROJECT REFERENCE NO.	SHEET NO.	TOTAL SHEETS
N.C.	R-5018	EC-1	
STATE PROJ. NO.	F.A. PROJ. NO.	DESCRIPTION	
37985	N/A	PE, RW	
41521.3.1		CONST.	

EROSION AND SEDIMENT CONTROL MEASURES

Std. #	Description	Symbol
	Reforestation	
1630.03	Temporary Silt Ditch	
1630.05	Temporary Diversion	
1605.01	Temporary Silt Fence	
1606.01	Special Sediment Control Fence	
1622.01	Temporary Berms and Slope Drains	
1630.01	Riser Basin	
1630.02	Silt Basin Type B	
1633.01	Temporary Rock Silt Check Type-A	
1633.02	Temporary Rock Silt Check Type-B	
1634.01	Temporary Rock Sediment Dam Type-A	
1634.02	Temporary Rock Sediment Dam Type-B	
1635.01	Rock Pipe Inlet Sediment Trap Type-A	
1635.02	Rock Pipe Inlet Sediment Trap Type-B	
1636.01	Rock Silt Screen	
1630.04	Stilling Basin	
	Rock Inlet Sediment Trap:	
1632.01	Type A	OR-A)
1632.02	Type B	OR-B)
1632.03	Type C	OR-C)



GRAPHIC SCALE



Daniel H. Bridges
 7/3/08

Prepared In the Office of:

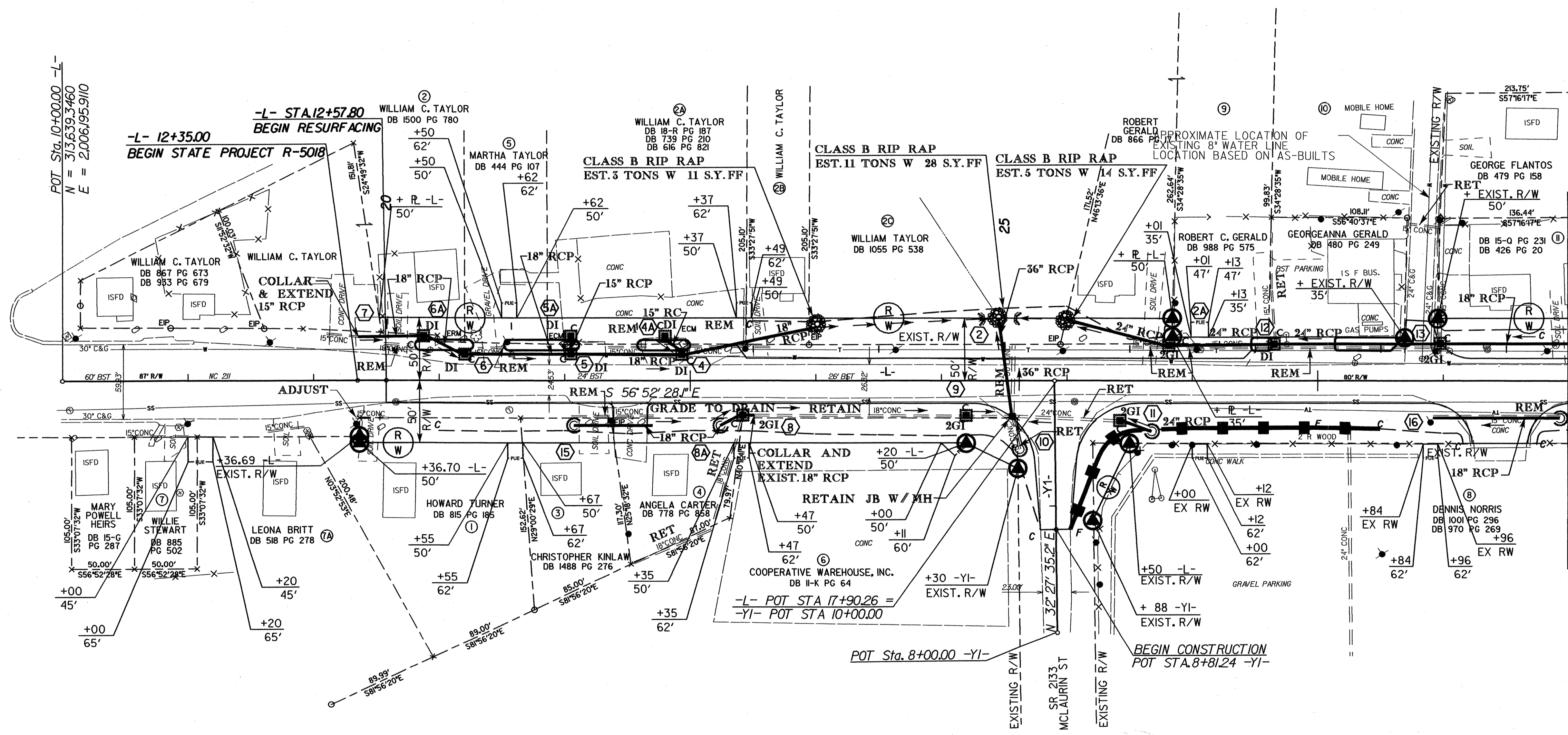


2006 STANDARD SPECIFICATIONS

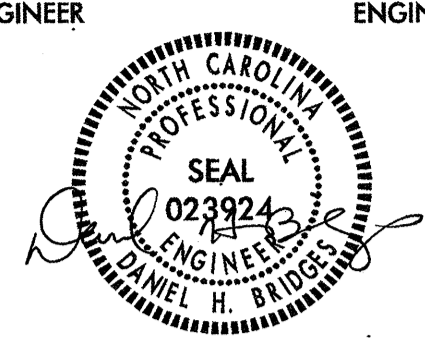
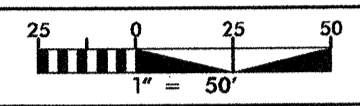
Roadway Standard Drawings

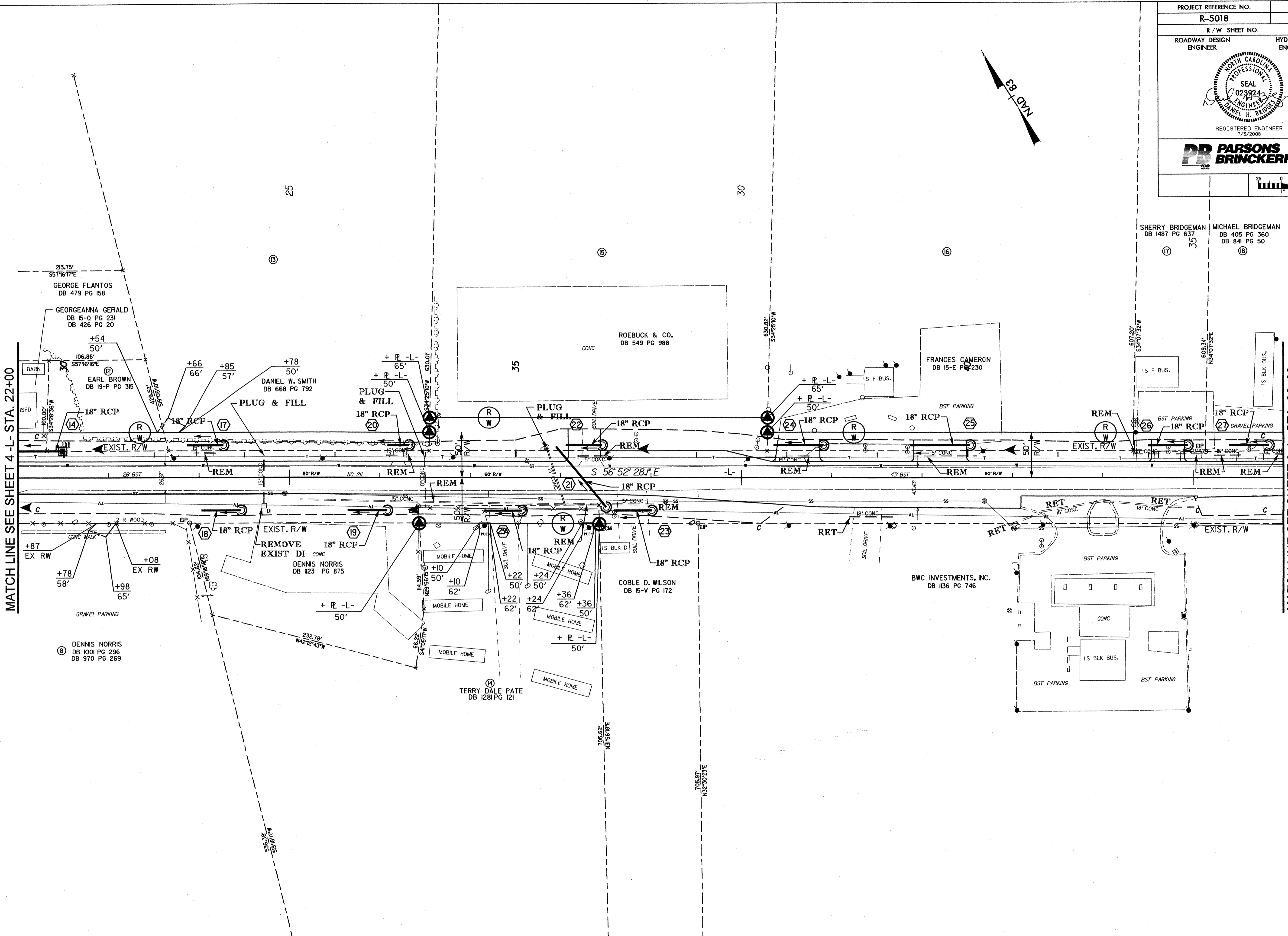
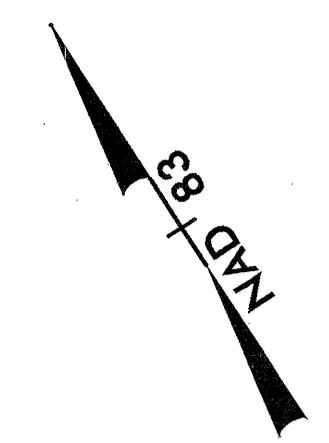
The following roadway english standards as appear in "Roadway Standard Drawings"- Roadway Design Unit - N. C. Department of Transportation - Raleigh, N. C., dated July 16, 2006 and the latest revision thereto are applicable to this project and by reference hereby are considered a part of these plans.

- 1605.01 Temporary Silt Fence
- 1632.03 Rock Inlet Sediment Trap Type C
- 1633.02 Temporary Rock Silt Check Type B
- 1635.01 Rock Pipe Inlet Sediment Trap Type A



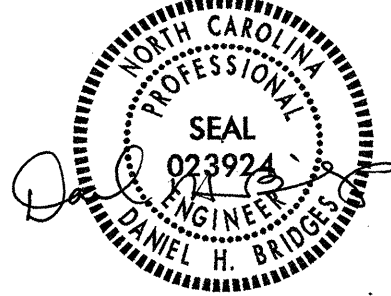

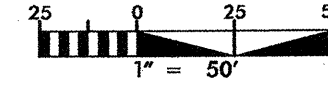
MATCH LINE SEE SHEET 5 -L- STA. 22+00

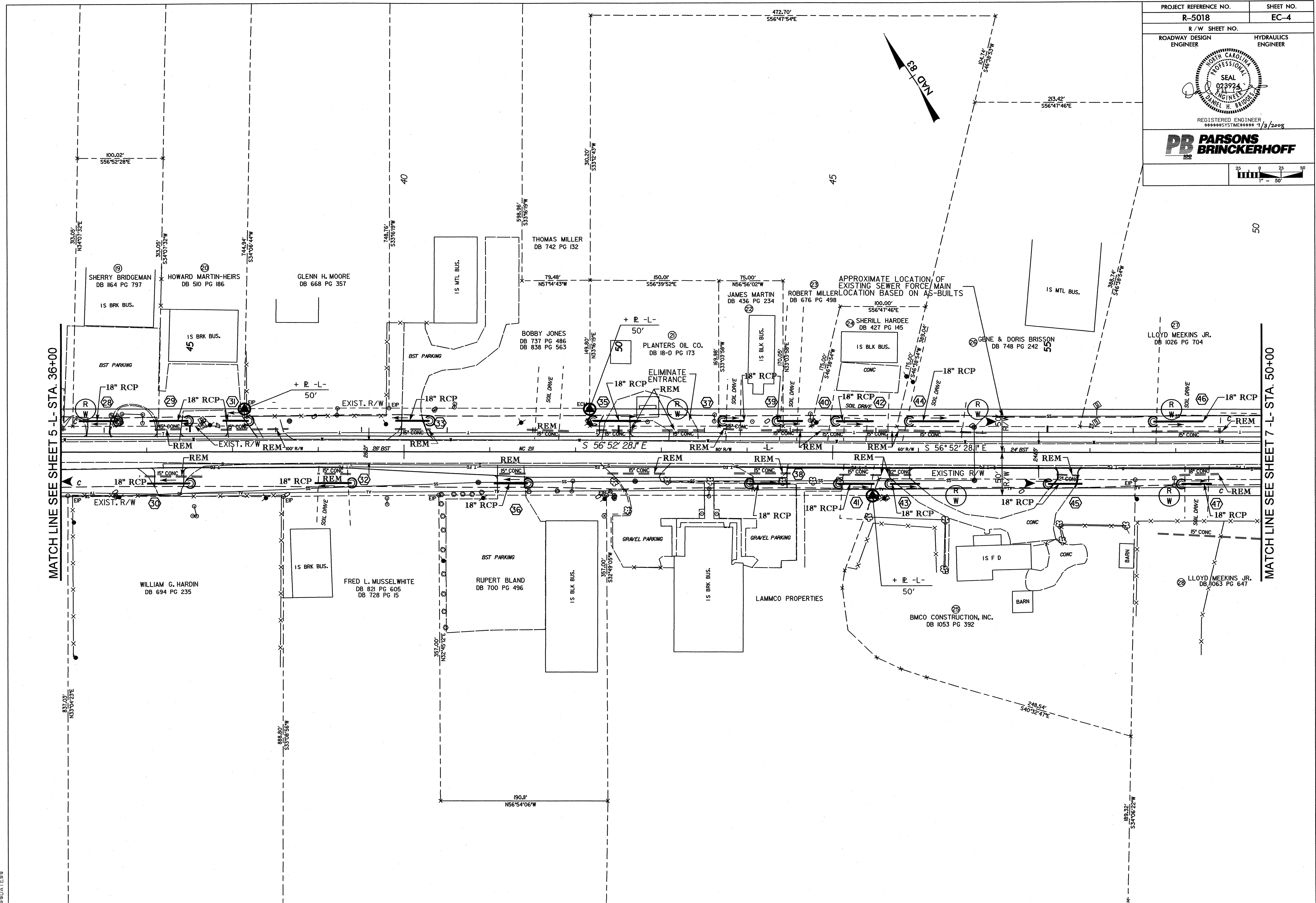
PROJECT REFERENCE NO. R-5018	SHEET NO. EC-3
R / W SHEET NO.	
ROADWAY DESIGN ENGINEER	HYDRAULICS ENGINEER
	
PB PARSONS BRINCKERHOFF 182	
REGISTERED ENGINEER 7/3/2008	
	



MATCH LINE SEE SHEET 4 - L - STA. 22+00

MATCH LINE SEE SHEET 6 - L - STA. 36+00

PROJECT REFERENCE NO. R-5018	SHEET NO. EC-4
R / W SHEET NO.	
ROADWAY DESIGN ENGINEER	HYDRAULICS ENGINEER
	
REGISTERED ENGINEER *****SYSTEM***** 1/3/2008	
	
	

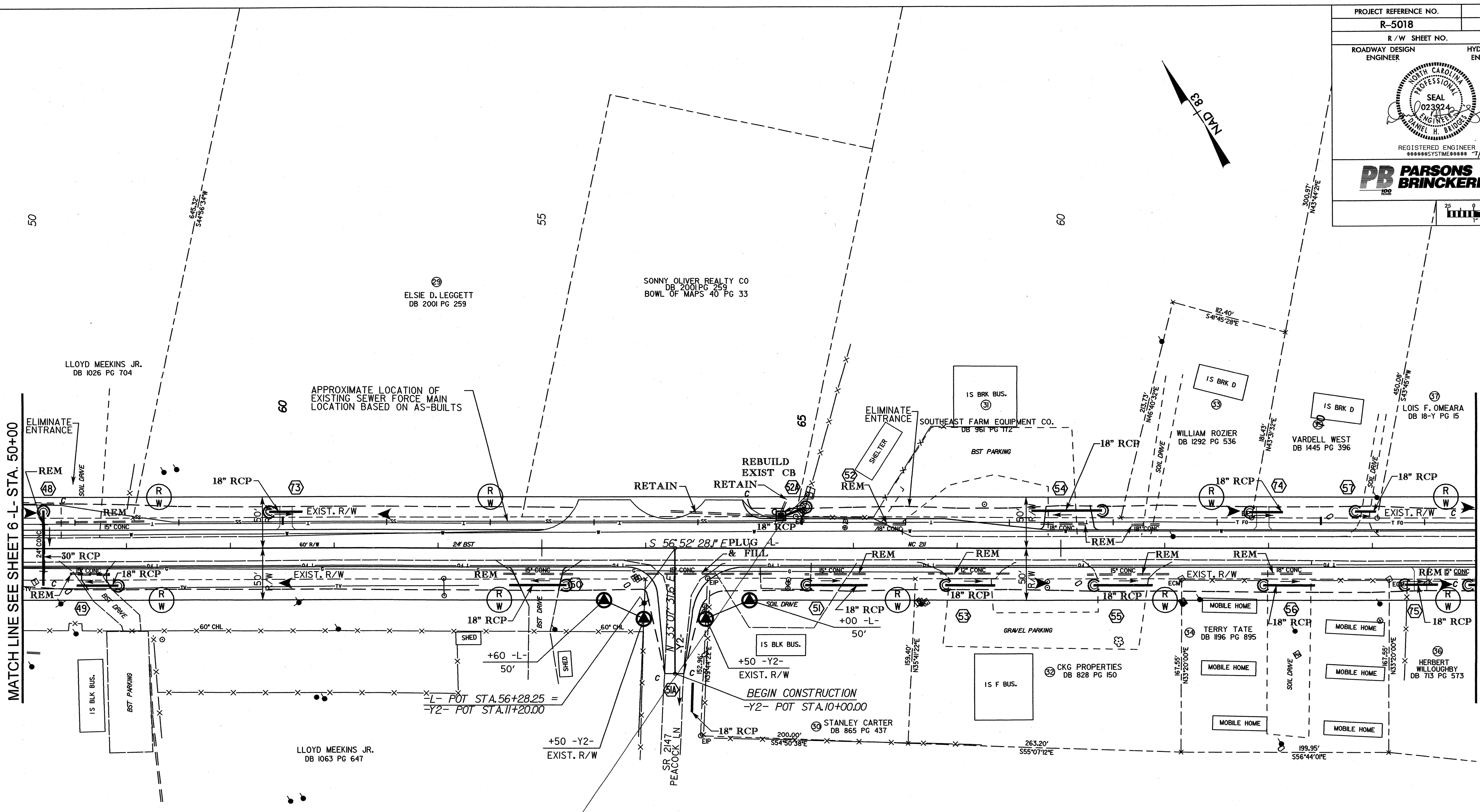
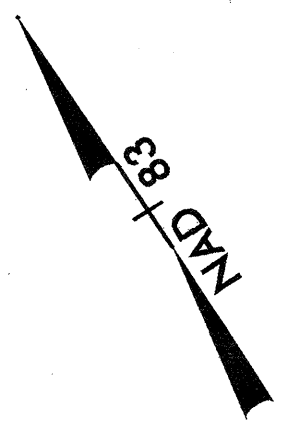


CGM
 PRT
 DATE

PROJECT REFERENCE NO. R-5018	SHEET NO. EC-5
R/W SHEET NO.	HYDRAULICS ENGINEER
ROADWAY DESIGN ENGINEER	REGISTERED ENGINEER 7/3/2008

REGISTERED ENGINEER
*****SYSTEM*****

PARSONS BRINCKERHOFF



MATCH LINE SEE SHEET 6 - L - STA. 50+00

MATCH LINE SEE SHEET 8 - L - STA. 64+00

29
ELSIE D. LEGGETT
DB 2001 PG 259

SONNY OLIVER REALTY CO
DB 2001 PG 259
BOWL OF MAPS 40 PG 33

LLOYD MEEKINS JR.
DB 1026 PG 704

APPROXIMATE LOCATION OF
EXISTING SEWER FORCE MAIN
LOCATION BASED ON AS-BUILTS

15 BRK BUS.
SOUTHEAST FARM EQUIPMENT CO.
DB 961 PG 112
BST PARKING

15 BRK D
WILLIAM ROZIER
DB 1292 PG 536

15 BRK D
VARDELL WEST
DB 1445 PG 396

15 BRK D
LOIS F. OMEARA
DB 18-Y PG 15

REBUILD
EXIST CB

RETAIN

S 56° 52' 28" F PLUG L
& FILL

15 BLK BUS.
BST PARKING

LLOYD MEEKINS JR.
DB 1063 PG 647

+50 -Y2-
EXIST. R/W

15 BLK BUS.
+50 -Y2-
EXIST. R/W

BEGIN CONSTRUCTION
-Y2- POT STA. 10+00.00

18" RCP
200.00'
554° 50' 38" E

15 F BUS.
CKG PROPERTIES
DB 828 PG 150

TERRY TATE
DB 1196 PG 895

HERBERT WILLOUGHBY
DB 713 PG 573

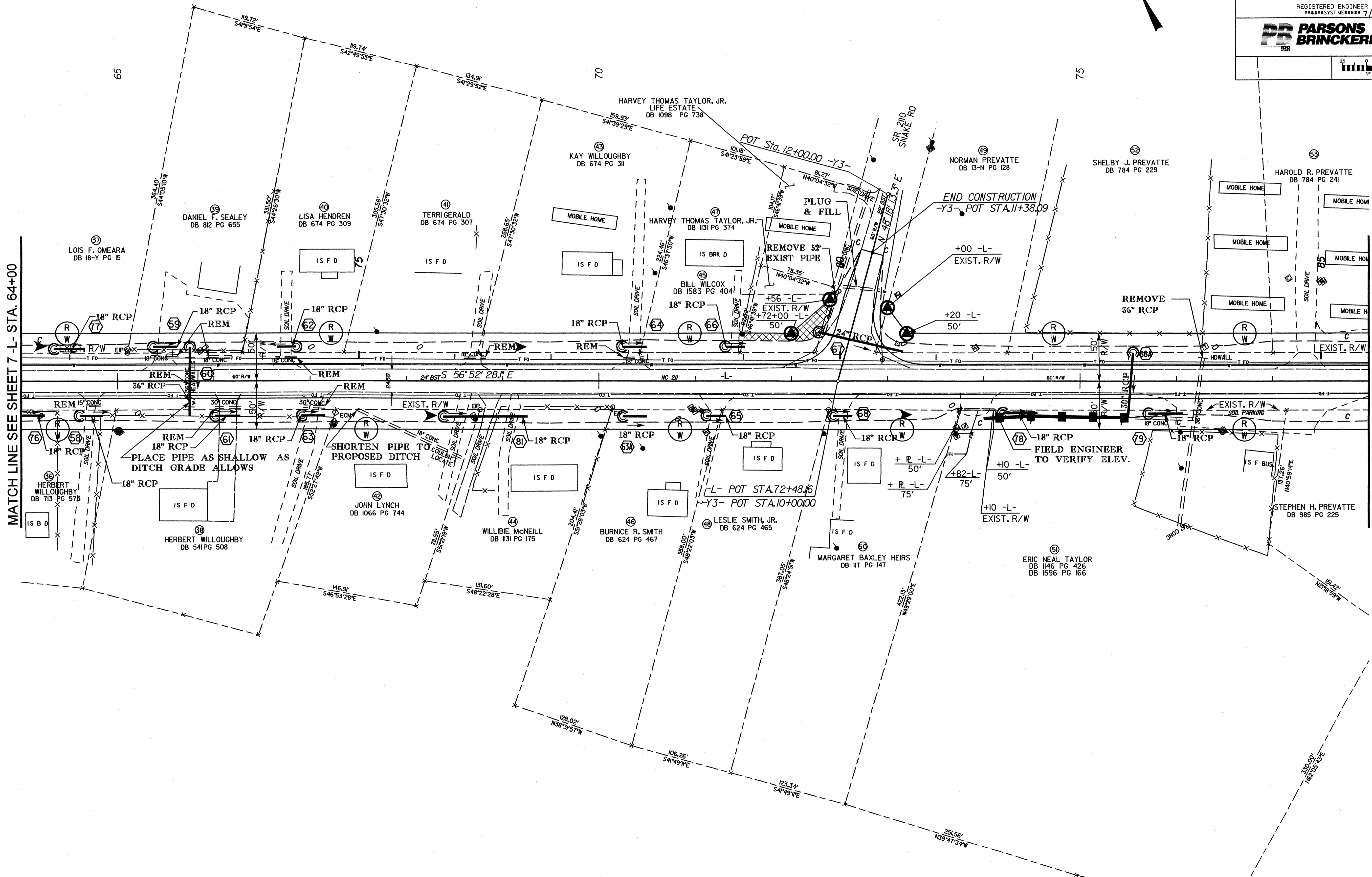
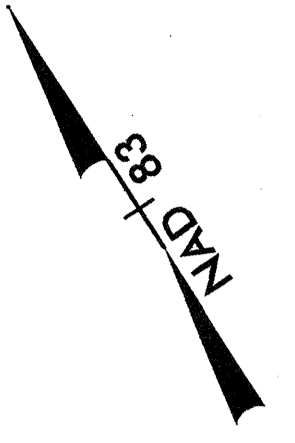
SR 2147
PEACOCK LN

PROJECT REFERENCE NO. R-5018	SHEET NO. EC-6
R/W SHEET NO.	
ROADWAY DESIGN ENGINEER	HYDRAULICS ENGINEER

REGISTERED ENGINEER
*****SYSTEM***** 7/3/2008

PB PARSONS BRINCKERHOFF

1" = 50'

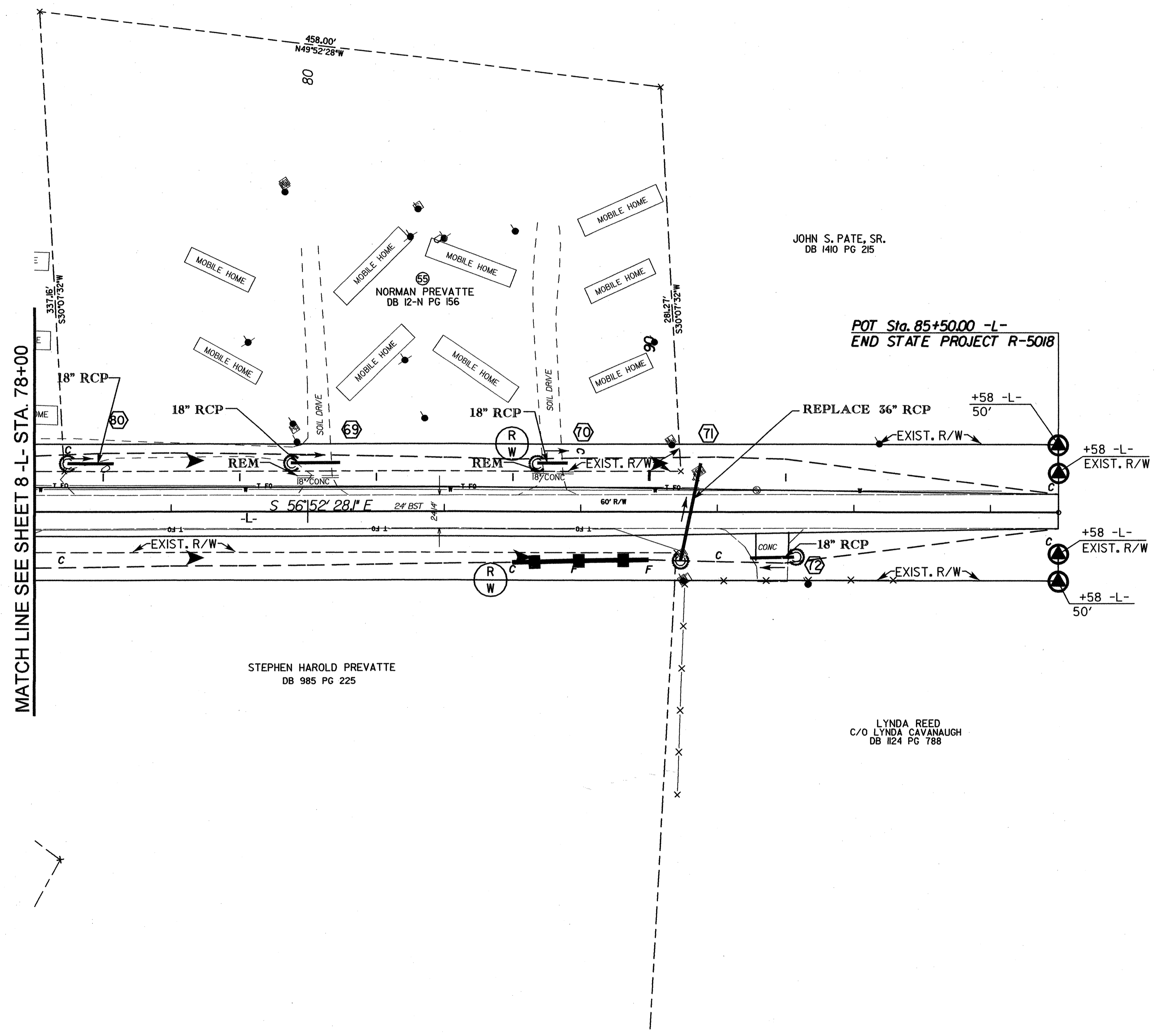
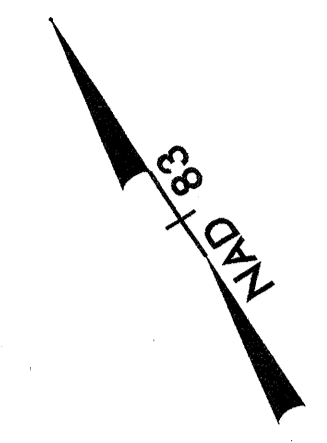


MATCH LINE SEE SHEET 7 - L- STA. 64+00

MATCH LINE SEE SHEET 9 - L- STA. 78+00

dgn
 prf
 \$\$\$DATE\$\$

PROJECT REFERENCE NO. R-5018	SHEET NO. EC-7
R / W SHEET NO.	
ROADWAY DESIGN ENGINEER	HYDRAULICS ENGINEER



MATCH LINE SEE SHEET 8 - L - STA. 78+00

JOHN S. PATE, SR.
DB 1410 PG 215

NORMAN PREVATTE
DB 12-N PG 156

STEPHEN HAROLD PREVATTE
DB 985 PG 225

LYNDA REED
C/O LYNDA CAVANAUGH
DB 124 PG 788

POT Sta. 85+50.00 -L-
END STATE PROJECT R-5018